

STORM<sup>®</sup>



FLEETWOOD RV



CLASS A GAS

2016

STORM<sup>®</sup>





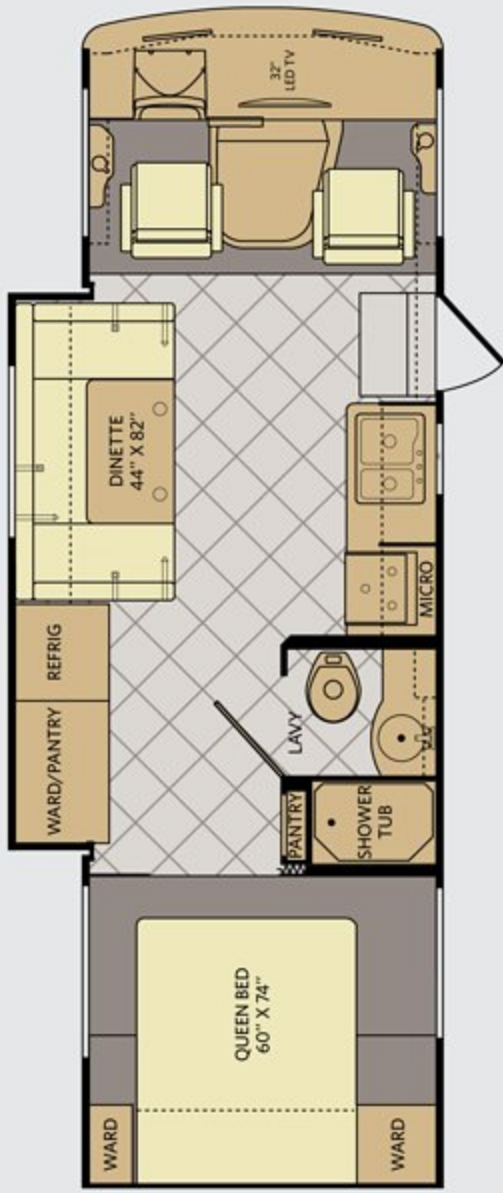
STORM 32V SHOWN IN BLUSHING BRONZE DÉCOR WITH BUTTERNUT WOOD CABINETRY

## TOP FEATURES

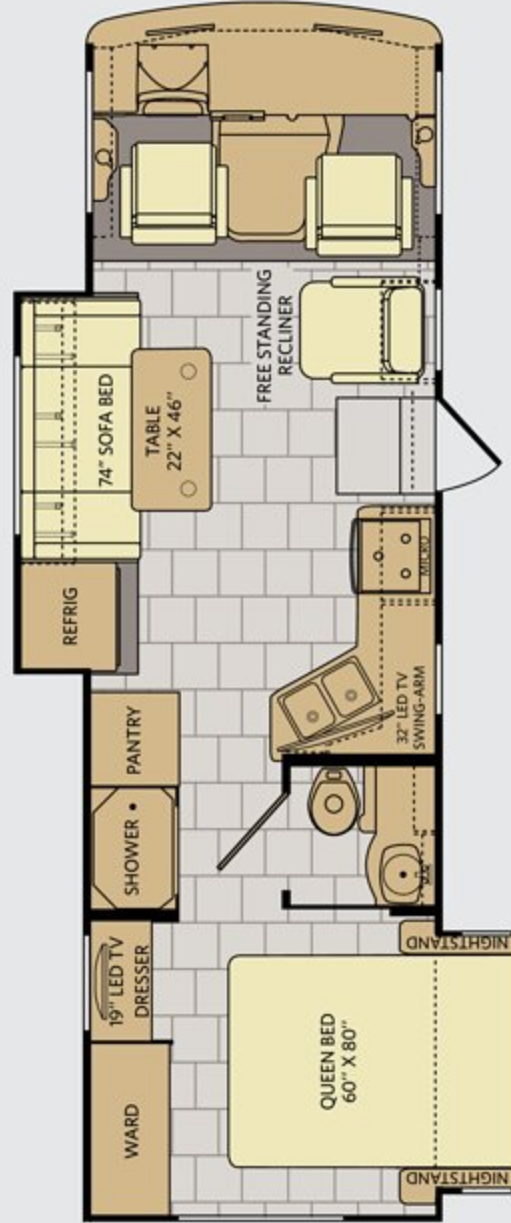
- Ford<sup>®</sup> 18,000lb chassis w/362HP V10 (28MS/30L/32H/32V)
- Ford<sup>®</sup> 22,000lb chassis w/362HP V10 (35SK)
- One-Piece Fiberglass Rear Cap
- Automatic Hydraulic Levelers Standard
- Aluminum Bus-Style Side Swing Luggage Doors
- Power Awning w/LED Light Strip
- Side-View Camera Package
- LED Interior Task Lighting
- Tinted Frameless Single-Pane Windows
- Exterior LED TV
- Bedroom 19" LED TV Standard
- Hide-A-Loft<sup>™</sup> Drop Down Queen Bed w/TV
- F-21 Construction & Manufacturing Technology
- Powerlock System<sup>™</sup> w/Interlocking Walls & Ceiling
- Powerframes<sup>™</sup> Precision Welding



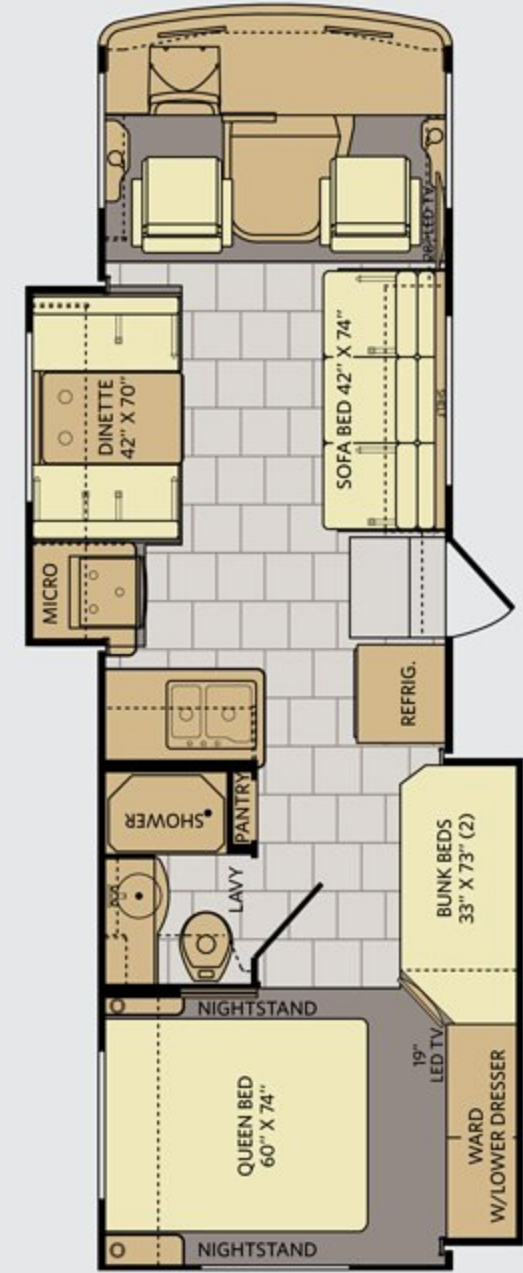
28MS



30L



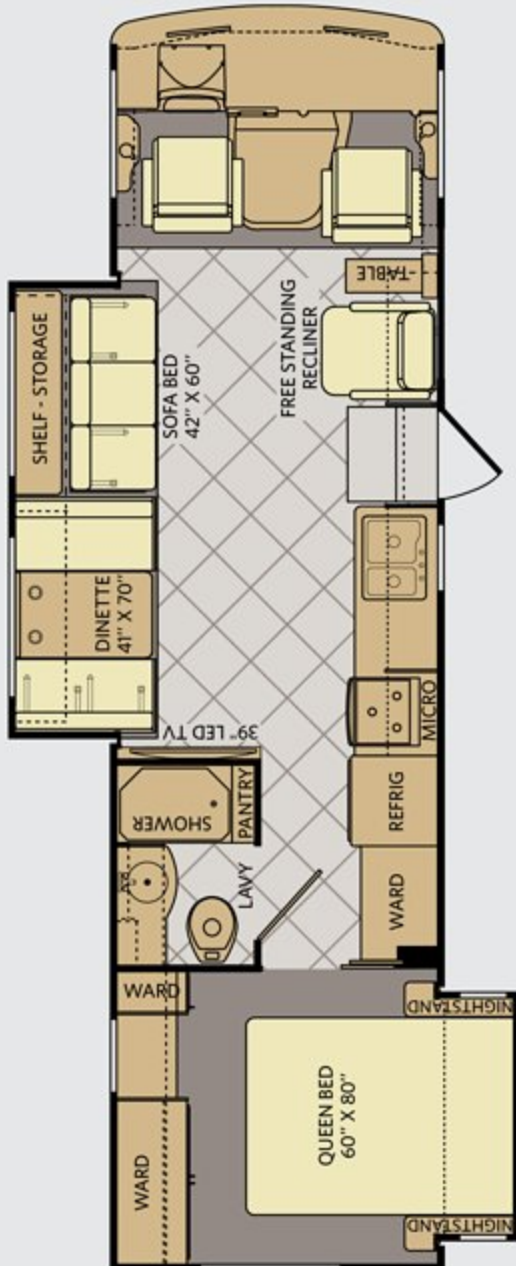
32H



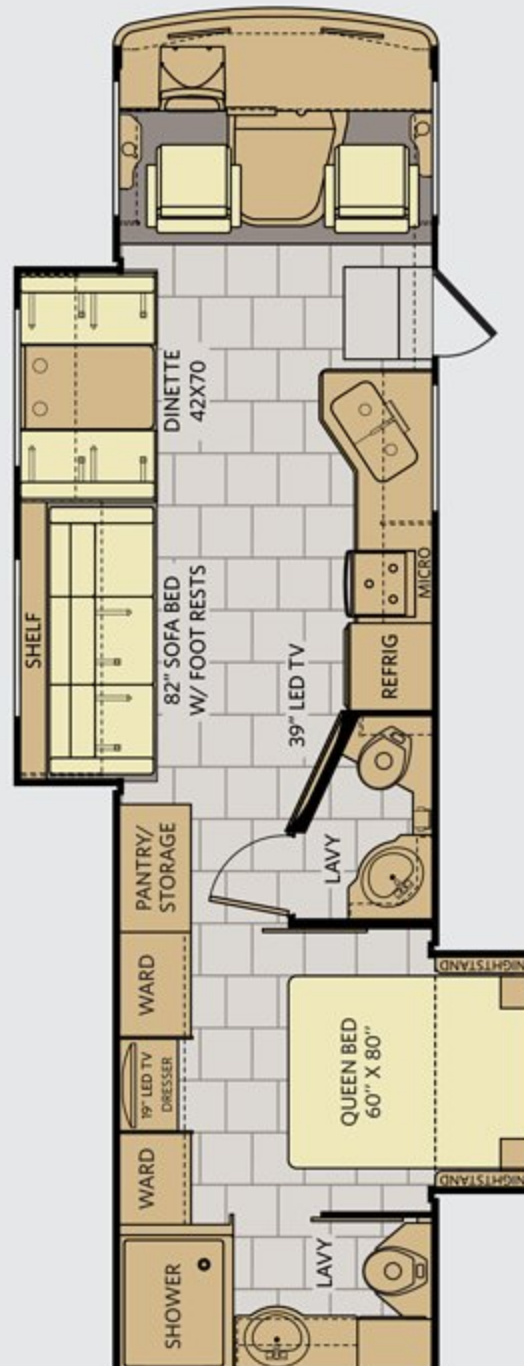
AVAILABLE OPTIONS: 830

AVAILABLE OPTIONS: 097, 157, 860/864

32V



35SK



AVAILABLE OPTIONS: 139, 144, 191

## OPTIONS



OPT. 097  
BUNK AREA  
19" LED TV



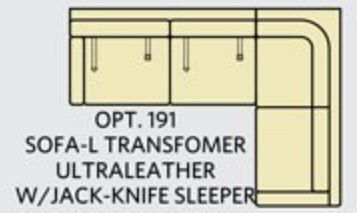
OPT. 139  
ELECTRIC FIREPLACE



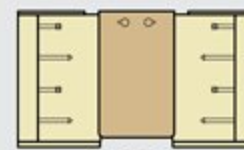
OPT. 144  
RESIDENTIAL REFRIG



OPT. 157  
DUAL  
PANEL TV'S



OPT. 191  
SOFA-L TRANSFORMER  
ULTRALEATHER  
W/JACK-KNIFE SLEEPER



OPT. 830  
FACING DINETTE



OPT. 860/864  
DINETTE W/ SWING DOWN BUNK  
30" X 70" DINETTE / 28" X 70" BUNK



Visit [FleetwoodRV.com](http://FleetwoodRV.com)





BLUSHING BRONZE



PLATINUM ONYX



STRATOSPHERE

## 2016 Storm Décors

BLUSHING BRONZE						CABINETRY
SOFA	ACCENT	BEDSPREAD	COUNTERTOP	FLOORING	CARPET	BARCELONA
STRATOSPHERE						BUTTERNUT
SOFA	ACCENT	BEDSPREAD	COUNTERTOP	FLOORING	CARPET	BUTTERNUT

MODELS	CHASSIS				
	28MS	30L	32H	32V	35SK
Wheelbase (inches)	178"	178"	190"	208"	228"
GVWR (lbs) <sup>1</sup>	18,000	18,000	18,000	18,000	22,000
Front GAWR (lbs) <sup>2</sup>	7,000	7,000	7,000	7,000	8,000
Rear GAWR (lbs) <sup>2</sup>	12,000	12,000	12,000	12,000	15,000
GCWR (lbs) <sup>3</sup>	23,000	23,000	23,000	23,000	26,000
Hitch Rating Weight (lbs) <sup>4, ††</sup>	5,000	5,000	5,000	5,000	5,000
Tongue Weight (lbs) <sup>†</sup>	500	500	500	500	500
Fuel Capacity (gal)	80	80	80	80	80

MODELS	DIMENSIONS & CAPACITIES				
	28MS	30L	32H	32V	35SK
Overall Length (inches) <sup>4</sup>	28' 8"	29' 11"	31'	32' 9"	36' 2"
Overall Height (with A/C)	12'	12'	12'	12'	12'
Overall Width (maximum) <sup>5, 6</sup>	102"	102"	102"	102"	102"
Interior Height (maximum)	82"	82"	82"	82"	82"
Interior Width (maximum)	96"	96"	96"	96"	96"
Patio Awning Width	18'	14'	11' 6"	18'	18'
Interior Storage (cu. ft.)	125	132	116	128	74
Exterior Storage (cu. ft.)	132	185	104	192	127
Fresh Water Tank (gal)	60	60	60	60	60
Grey Water Tank (gal)	35	35	35	37	37
Black Water Tank (gal)	35	35	35	37	37
Appliance Propane Tank (gal) (WC) <sup>7</sup>	14	14	14	14	14
Water Heater Tank (gal)	6	6	6	6	6

### FORD<sup>®</sup> CHASSIS

**Model:** Ford<sup>®</sup>  
**Engine:** 6.8L Triton V10  
**Transmission:** Ford<sup>®</sup> 5-Speed, Automatic w/Overdrive

**Alternator:** 175 Amp  
**Torque:** 457 lb-ft @ 3,250 RPM  
**Horsepower:** 362HP

### Addendums

- GVWR (Gross Vehicle Weight Rating) is the maximum permissible weight of this fully loaded motorhome. The GVWR is equal to or greater than the sum of the (UVW) unloaded vehicle weight plus the (OCCC) occupant cargo-carrying capacity\*.
- GAWR (Gross Axle Weight Rating) is the maximum permissible loaded weight a specific axle is designed to carry.
- GCWR (Gross Combined Weight Rating) is the value specified by the motorhome manufacturer as the maximum allowable loaded weight of this motorhome with its towed vehicle. Towing and braking capacities may be different. Refer to Fleetwood and chassis manufacturer's manuals for complete information.
- Length measured from front bumper to rear bumper (excludes accessories).
- Excludes safety equipment and awnings.
- Motorhomes feature a body width over 96" which will restrict your access to certain roads. Before purchasing, you should research any state and/or province road laws which may affect your usage.
- Tank manufacturer's listed water capacity (WC). Actual propane capacity is 80% of water listing as required by the safety code.

† The chassis manufacturer recommends the installation of a supplemental brake control system to activate the brakes on the vehicle or trailer you are towing. Hitch receiver ratings expressed are maximum for the hitch receiver installed and may require the purchase of additional equipment that is dependent on the weight of the towed load. Consult with hitch receiver manufacturer for further information.

\* UVW and OCCC are found on the label containing the federal certification tag in each RV.

†† The Minimum Towable Load of this vehicle is the available weight capacity, up to GCWR, when the coach is fully loaded to maximum GVWR. However, if the coach is loaded to something less than maximum GVWR, that extra available weight capacity can be added to your Towable Load. For example, if your coach is loaded to 1000lbs less than maximum GVWR, your Towable Load increases accordingly. Do not exceed the hitch rating weight, GVWR or GCWR.

### IMPORTANT—PLEASE READ

Product information, photography and illustrations included in this publication were as accurate as possible at the time of printing. For further product information and changes, please visit our website at [www.fleetwoodrv.com](http://www.fleetwoodrv.com) or contact your local Fleetwood RV dealer. Prices, materials, design and specifications are subject to change without notice. All weights, fuel, liquid capacities and dimensions are approximate. Fleetwood RV has designed its recreational vehicles to provide a variety of uses for customers. Each vehicle features optimal seating, sleeping, storage and fluid capacities. The user is responsible for selecting the proper combination of loads (i.e., occupants, equipment, fluids, cargo, etc.) to ensure that the vehicle's capacities are not exceeded.

### CONTACT US

To locate a dealer near you, visit our website at [www.fleetwoodrv.com](http://www.fleetwoodrv.com) or call 1-800-322-8216. We can also be contacted at Fleetwood RV Customer Relations, P.O. Box 1007, Decatur, IN 46733.

\*\* All 2016 Fleetwood RV motorhomes include a 1-year emergency roadside assistance membership. For complete info, see your Fleetwood RV dealer.

©2015 Allied Recreation Group Inc. Printed in USA.  
 Inventory Control Number ST16B1, 07/15. Model Year 2016, First Edition.

# 2016

CLASS A GAS

