

ADMIRAL

ADMIRAL

2016 | CLASS A GAS



2016 CLASS A GAS



HOLIDAY RAMBLER

Your new family room





Embark on adventures, large and small. The perfect companion for all tours across the countryside, Admiral brings life and exploration to your doorstep. Breathe in thrill of Mother Nature's wake-up call and retire in the comfort of home anywhere your dreams lead you. Admiral is ready! Are you?

Admiral Top Features

- Ford® 18,000lb chassis w/362HP V10
- Automatic Hydraulic Levelers Standard
- Bus-Class Aluminum Luggage Doors
- Vetrolite® Ultra-Thick Wall Fiberglass
- Interlocking Aluminum Construction
- Vacu-bond™ Wall Lamination
- Axalta® Premium Full-Body Paint
- Intense Halogen Projector Headlamps
- Power Awning w/LED Lighting
- Side-View Camera Package
- LED Interior Task Lighting
- Tinted Frameless Dual-Pane Windows
- Soft-Touch Ceiling w/Ducted Air
- Exterior Entertainment Center
- Bedroom 19" LED TV Standard
- Queen Size Drop Down Bed w/TV
- Solid-Surface Countertops
- Pull-Out Drawer in Dinette Base

ADMIRAL 32H SHOWN IN RESORT TAN DÉCOR WITH GLAZED FULTON CHERRY WOOD CABINERY

2016 Graphics and Décor

Go to holidayrambler.com and build your own Admiral!



PERFECT GREIGE



RESORT TAN



SUNMIST

Inside and out, Admiral offers a wide selection of colors, styles, and finishes. From the moment you lay eyes on Admiral, the high-style graphics and décor collections welcome you with gracious beauty and contemporary design. We've paid attention to every detail. Wherever you are, you'll feel right at home.

PERFECT GREIGE

CABINETRY

SOFA

ACCENT

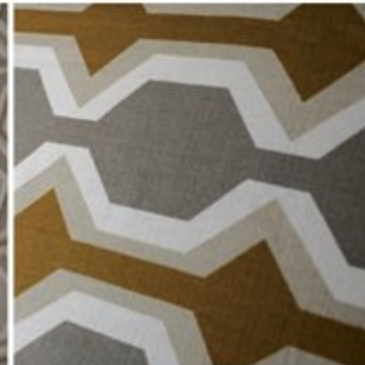
BEDSPREAD

COUNTERTOP

FLOORING

CARPET

GLAZED FULTON
CHERRY



RESORT TAN

GLAZED HILLSIDE
CHERRY

SOFA

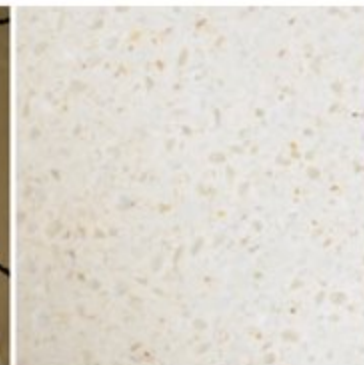
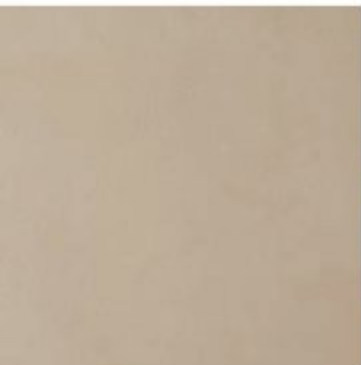
ACCENT

BEDSPREAD

COUNTERTOP

FLOORING

CARPET



Standard Features and Options

INTERIOR THROUGHOUT

- 12V Water Pump, Demand Operation
- 15,000 Btu/h Ducted Air Conditioner w/Chill Grille
- 30,000 Btu/h Furnace, Wall Mounted Thermostat (Except 32H)
- Dual 20,000 Btu/h Furnaces (32H)
- 6 Gallon Propane Water Heater w/Electronic Ignition
- AC/DC Load Center w/12V Converter/Battery Charger
- Auxiliary Batteries w/Disconnect Switch
- Central Monitor Panel
- Complete PEX Plumbing System
- Deluxe Roller Bearing, Full Extension Drawer Guides & Transit-Ship Locks
- Full Vinyl Tile
- GFI Circuit Protection
- Hardwood Raised Panel Cabinet Doors
- Hidden Cabinet Door w/Euro Hinges
- Ozite Lined Shelves in Overhead Cabinets
- Manual Night Shades in Living Room & Bedroom
- Premium Lexington Constructed Furniture
- Water Heater Bypass Valve
- Water Pump with On/Off Switches at Galley & Lavy
- Whole-Coach Water Filtration System
- Bedroom 19" LED TV
- LED Interior Task Lighting
- Soft-Touch Ceiling w/Ducted Air
- Pull-Out Drawer in Dinette Bench Base
- Queen Size Drop Down Bed w/TV

Optional

- Bunk Bed-n-Breakfast w/Dual Pane Windows
- Dual Flat Panel Video Monitors (32H MODEL BUNKS)
- Satellite Radio

DRIVER CONVENIENCE

- (2) 12V Power Jack
- 3-Point Seatbelts at Driver & Passenger Seats
- Auxiliary Emergency Start Assist Switch on Dash
- Cruise Control
- In-Dash AM/FM/Radio w/CD Player
- Remote/Heated/Rear-View Mirrors w/Side-View Cameras
- Radio Switch Main/Auxiliary Power
- Soft Touch Premium Lexington Driver/Passenger Captain's Chair w/Reclining Back/Slide Controls
- Tilt Wheel
- Power Windshield Privacy/Night Shade
- Driver/Passenger Reading Lights & Magazine Rack
- Passenger side (2) 110V Outlets

LIVING ROOM

- 28" LED Wide-Screen TV w/Remote & DVD Player (39" LED Wide-Screen TV 32V)
- Ceiling Lights w/Wall Switches (Entry & Bath)
- Dream Dinette Table w/2 Cup Holders, Convertible for Sleeping
- Soft Touch Premium Lexington Sofa Bed (Select Models)

GALLEY

- 3 Burner Range w/High Output/Piezo Igniter & Oven
- Range Hood w/Light & Fan
- Cooktop Cover
- Laminate Countertops w/Bull Nose T-Molding Edge
- Dometic® 6 cu. ft. Refrigerator/Freezer
- Microwave Oven w/Electronic Touch Pad
- Power Roof Fan-Tastic® Vent Fan
- Raised Panel Refrigerator Inserts
- Residential Size Double Bowl Sink
- Decorative Backsplash

BEDROOM

- Bedspread
- Queen Bed w/Mattress
- Reading Lights in Bed Overhead Cabinet
- 19" LED TV on Retractable Swing-Arm Sto-Away
- Bunk Beds 32H
- Dual Personal Storage Shelves & Dresser Drawers
- Safety Nets
- 4" Foam Mattresses
- Dual Window w/Privacy Curtains

BATHROOM

- Bath Door w/Residential Passage Lock
- Dometic China Bowl Toilet w/Hand Sprayer
- Medicine Cabinet w/Wood Construction
- Molded ABS Shower/Tub w/Surround
- Large Sink w/Residential Style Faucet
- Frosted Glass Shower Door
- Shower Head w/Flexible Hose Extension
- Skylight/Roof Vent w/12V Fan
- Dual Towel Bars
- Hand Towel Rack

SAFETY/CONVENIENCE (INTERIOR)

- 10 lb. ABC Fire Extinguisher
- Carbon Monoxide Detector/Alarm
- Exterior & Interior Entry Assist Handle
- Multiple Seatbelt Locations
- Propane Detector/Alarm
- Smoke Detector/Alarm
- Egress Window

EXTERIOR THROUGHOUT

- Mirrors w/ Side-View Cameras
- Dometic Awning Above All Slide-Out Rooms
- Dual 6V Deep Cycle Auxiliary Batteries
- High Gloss Smooth Fiberglass Exterior
- Large 1" (Inside Diameter) Water Tank Drain
- Onan® 4.0kW MicroQuiet Generator
- Axalta® Premium Full-Body Paint
- Power Awning w/LED Lighting
- Power Electric Step
- Rear Ladder

EXTERIOR THROUGHOUT

- Stainless Steel Wheel Simulators
- Toilet Tank San-T-Flush™ System
- Trailer Hitch w/7 Pin Electrical Hook-Up1
- Valve Stem Extenders
- Flexible Shower Hose & Faucet in Utility Compartment
- Automatic Hydraulic Levelers
- Bus-Class Aluminum Luggage Doors
- Vetrolite® Ultra-Thick Wall Fiberglass
- Interlocking Aluminum Luggage Doors
- Vacu-bond™ Wall Lamination
- Intense Halogen Projector Headlamps w/LED Accents
- Remote/Heated Rear-View Mirrors w/Side-View Cameras
- Exterior Entertainment Center

SAFETY/CONVENIENCE (EXTERIOR)

- 30 Amp, 30' Power Cord, Compartment Storage
- AC Duplex GFI Receptacle on Patio Side
- Amber Porch Light w/Interior Switch
- Automotive Safety Glass Windshield
- Entry Door w/Screen Door & Deadbolt Lock
- High Mounted LED Taillights
- Power Electric Step

STORAGE

- Molded Cross Link Polyethylene Battery Compartment w/Lid
- Pass Through Storage
- Roto-Molded Polyethylene Luggage Compartments
- Slam Latch Luggage Doors Bus-Class Aluminum Luggage Doors

BODY STRUCTURE

- 26" Wide Radius Corner Entry Door w/Obscured Window
- Corrosion Resistant Aluminum Tube Hull Framing
- Full Basement Exterior w/Enclosed, Heated Holding Tanks & Luggage Compartments
- Molded Fiberglass Front Cap Vetrolite® Ultra-Thick Wall Fiberglass
- Radius Roof w/Ducted A/C
- Sidewalls Framed with 1 1/2" Aluminum Tubing
- Vacu-bond™ Floor
- Vacu-bond Hull Lamination Process

Not all options are available on all floor plans. See your Holiday Rambler dealer for details.**CSA standards may require substitution or deletion to achieve conformance.

Admiral Floor Plans

WEIGHTS & MEASUREMENTS

MODELS	32H	32V
Wheelbase (inches)	190"	208"
GVWR (lbs) ¹	18,000	18,000
Front GAWR (lbs) ²	7,000	7,000
Rear GAWR (lbs) ²	12,000	12,000
GCWR (lbs) ³	23,000	23,000
Hitch Rating Weight (lbs) ^{1, 11}	5,000	5,000
Tongue Weight (lbs) [†]	500	500
Fuel Capacity (gal)	80	80

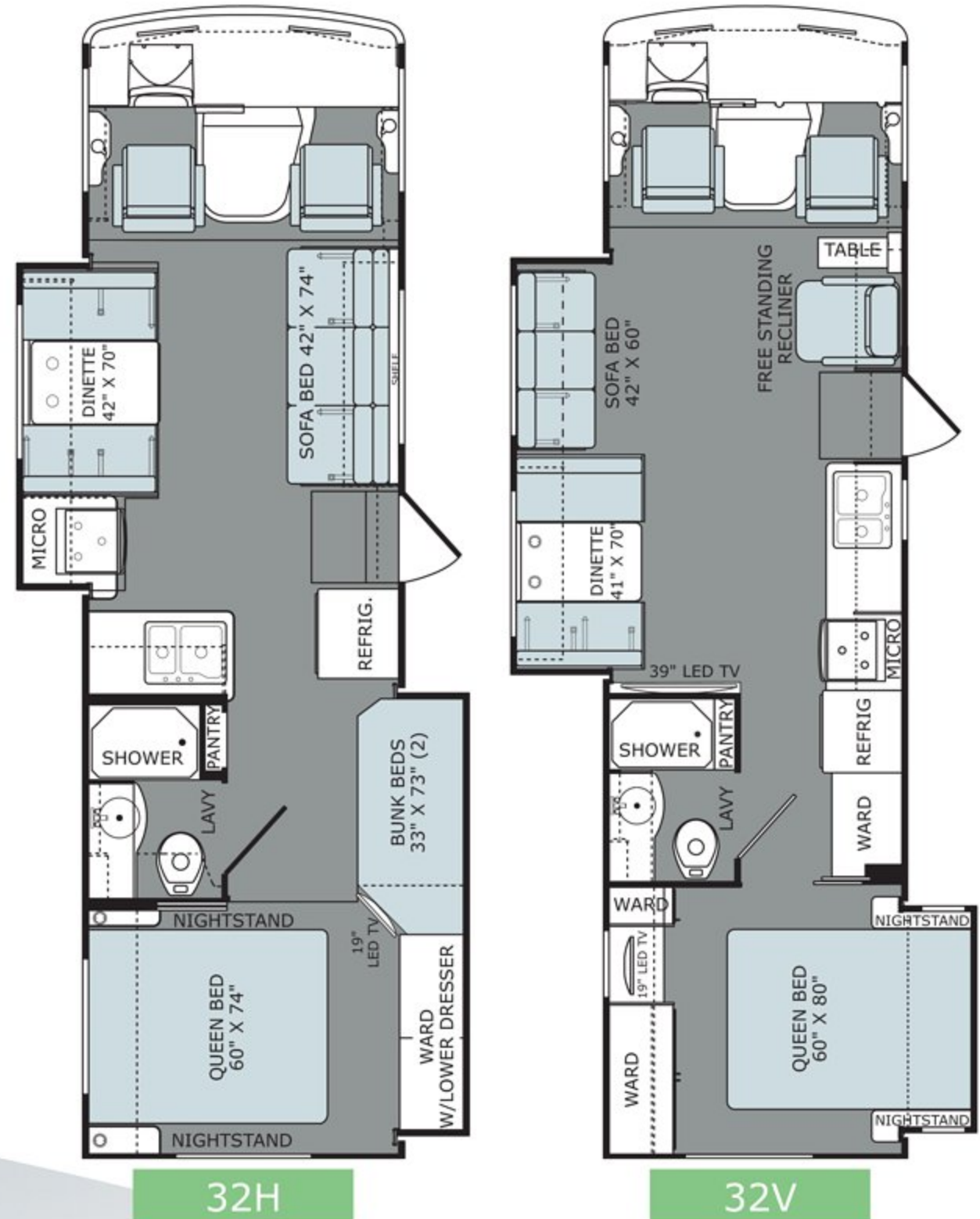
FORD® CHASSIS

Model: Ford® Chassis
 Engine: 6.8L Triton V10 RPM
 Transmission: 5-Speed, Automatic w/Overdrive

Alternator: 175 Amp
 Torque: 457 lb-ft @ 3,250 RPM
 Horsepower: 362HP

DIMENSIONS & CAPACITIES

MODELS	32H	32V
Overall Length ⁴	31'	32' 9"
Overall Height (with A/C)	12'	12'
Overall Width (maximum) ^{5, 6}	102"	102"
Interior Height (maximum)	82"	82"
Interior Width (maximum)	96"	96"
Patio Awning Width	10'	18'
Interior Storage (cu. ft.)	116	128
Exterior Storage (cu.ft.)	104	192
Fresh Water Holding Tank (gal)	60	60
Grey Water Holding Tank (gal)	35	37
Black Water Holding Tank (gal)	35	37
Appliance Propane Tank (gal) (WC) ⁷	14	14
Water Heater Tank (gal)	6	6

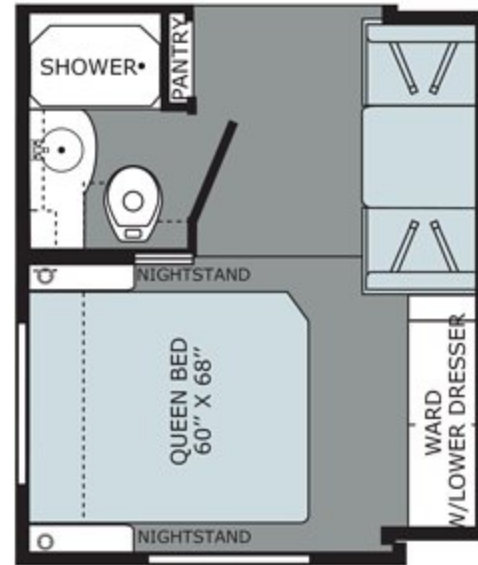


AVAILABLE OPTIONS: 097, 157, 864

FLOOR PLAN OPTIONS

OPT. 097
BUNK AREA
19" LED TV

OPT. 157
DUAL PANEL
TV'S



OPT. 864
SWING DOWN DINETTE W/BUNK



Addendums

1. GVWR (Gross Vehicle Weight Rating) is the maximum permissible weight of this fully loaded motorhome. The GVWR is equal to or greater than the sum of the (UVW) unloaded vehicle weight plus the (OCCC) occupant cargo-carrying capacity.*
 2. GAWR (Gross Axle Weight Rating) is the maximum permissible loaded weight a specific axle is designed to carry.
 3. GCWR (Gross Combined Weight Rating) is the value specified by the motorhome manufacturer as the maximum allowable loaded weight of this motorhome with its towed vehicle. Towing and braking capacities may be different. Refer to Holiday Rambler and chassis manufacturer's manuals for complete information.
 4. Length measured from front bumper to rear bumper (excludes accessories).
 5. Excludes safety equipment and awnings.
 6. Motorhomes feature a body width over 96" which will restrict your access to certain roads. Before purchasing, you should research any state and/or province road laws which may affect your usage.
 7. Tank manufacturer's listed water capacity (WC). Actual propane capacity is 80% of water listing as required by the safety code.
- † The chassis manufacturer recommends the installation of a supplemental brake control system to activate the brakes on the vehicle or trailer you are towing. Hitch receiver ratings expressed are maximum for the hitch receiver installed and may require the purchase of additional equipment that is dependent on the weight of the towed load. Consult with hitch receiver manufacturer for further information.
- †† Minimum Towable Load is the available weight, up to GCWR, when the coach is fully loaded to maximum GVWR. However, if the coach is loaded to something less than maximum GVWR, that extra available weight can be added to your Towable Load. For example, if your coach is loaded to 1000lbs less than maximum GVWR, your Towable Load increases accordingly.
- * UVW and OCCC are found on the label containing the federal certification tag in each RV.



HOLIDAY RAMBLER

**WARRANTY INFORMATION:**

Enjoy your next RV adventure with the peace of mind that comes with a 12 month/24,000 mile basic limited warranty; a 5 year/50,000 mile limited warranty on aluminum or steel frame structure. Review your coach's limited warranty in full for complete terms and conditions.

CONTACT US

To locate a dealer near you, visit our website at www.holidayrambler.com or call (877) 466-6226. We can also be contacted at Holiday Rambler Customer Relations, P.O. Box 1007, Decatur, IN 46733.

IMPORTANT—PLEASE READ: Product information, photography and illustrations included in this publication were as accurate as possible at the time of printing. For further product information and changes, please visit our website at www.holidayrambler.com or contact your local Holiday Rambler dealer. Prices, materials, design and specifications are subject to change without notice. All weights, fuel, liquid capacities and dimensions are approximate. Holiday Rambler has designed its recreational vehicles to provide a variety of uses for its customers. Each vehicle features optimal seating, sleeping, storage and fluid capacities. The user is responsible for selecting the proper combination of loads (i.e., occupants, equipment, fluids, cargo, etc.) to ensure that the vehicle's capacities are not exceeded.

ALLIED RECREATION GROUP.

**YOUR LOCAL HOLIDAY RAMBLER DEALER IS:**