



HOLIDAY RAMBLER

NAVIGATOR XE

2016 CLASS A DIESEL



DOWNTOWN BROWN



GATEWAY GRAY



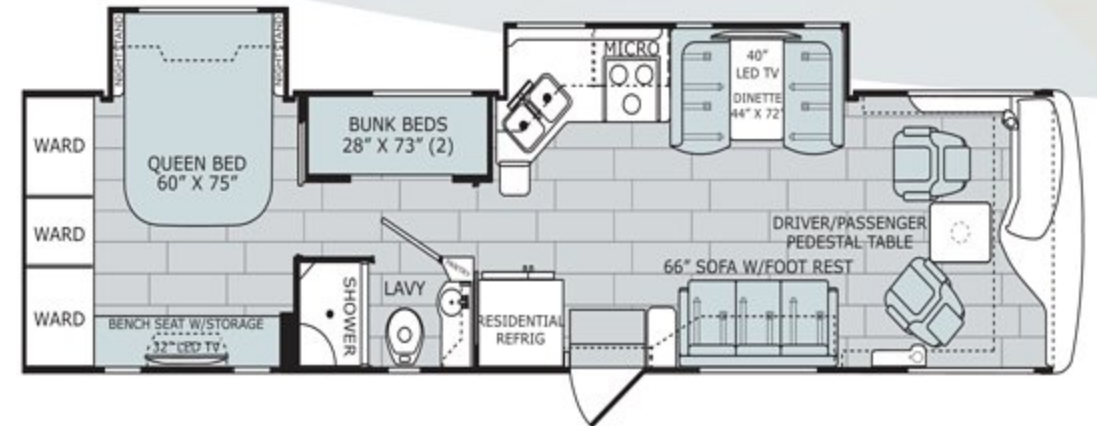
RESORT TAN

33D



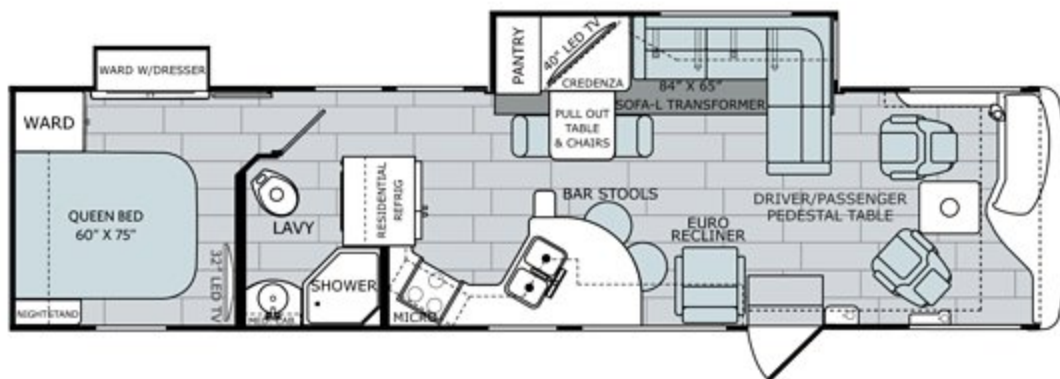
AVAILABLE OPTIONS: 093, 126, 217, 853

35E



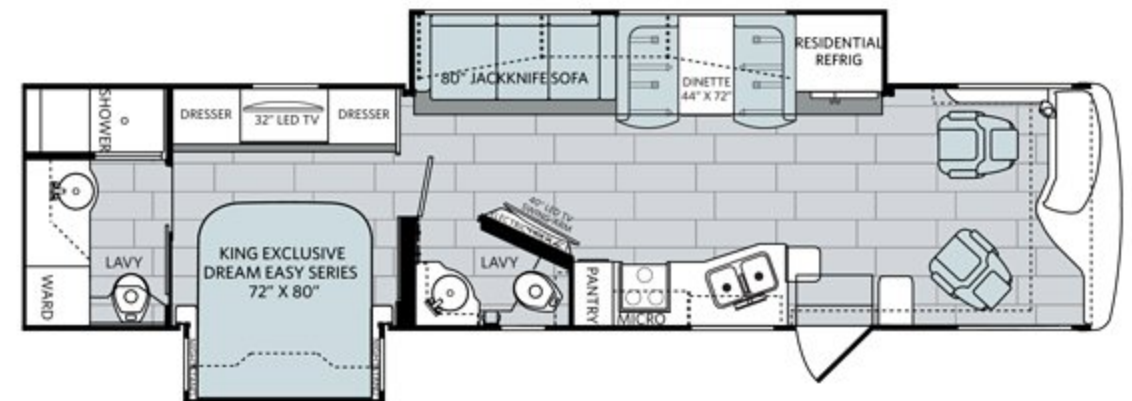
AVAILABLE OPTIONS: 093, 126, 157, 217, 815, 853

35B



AVAILABLE OPTIONS: 093, 126, 217, 853

36K



AVAILABLE OPTIONS: 093, 126, 194, 217, 830, 853

OPTIONS

OPT. 093
EXTERIOR
ENTERTAINMENT
CENTER

OPT. 126
WASHER
/DRYER

OPT. 126 (36K)
WASHER/DRYER

OPT. 157
DUAL PANEL TVs

OPT. 194
THEATRE SEATING
SOFA W/INCLINERS

OPT. 217
DROP DOWN
QUEEN BED 60" X 80"

OPT. 830
FACING DINETTE

OPT. 815
66"
FOLDAWAY
SLEEPER

OPT. 853
QUEEN BED
EXCLUSIVE DREAM
EASY SERIES
60" X 80"



HOLIDAY RAMBLER

NAVIGATOR XE

2016 CLASS A DIESEL

WEIGHTS & MEASUREMENTS 300HP 340HP

MODELS	300HP		340HP	
	33D	35B	35E	36K
Wheelbase (inches)	208"	242"	242"	252"
GVWR (lbs) ¹	26,000	28,000	28,000	29,500
Front GAWR (lbs) ²	10,500	10,500	10,500	10,500
Rear GAWR (lbs) ²	17,500	17,500	17,500	19,000
GCWR (lbs) ³	30,000	33,000	33,000	33,000
Hitch Rating Weight (lbs) ^{†, ††}	10,000	10,000	10,000	10,000
Tongue Weight (lbs) [†]	1,000	1,000	1,000	1,000
Fuel Capacity (gal)	90	90	90	90

ROADMASTER™ CHASSIS

Model: Freightliner® XCS Series
 Engine: Cummins® ISL6.7L
 Transmission: Allison® 2500 MH 6-Speed w/Electronic Shifter
 Alternator: Delco Remy 160 Amp
 Torque: 660 lb-ft @ 1,600 RPM
 Horsepower: 300HP (33D) 340HP (35B, 35E, 36K)

DIMENSIONS & CAPACITIES

MODELS	33D	35B	35E	36K
Overall Length ⁴	33' 11"	36' 9"	36' 9"	37' 7"
Overall Height (with A/C)	11' 10"	11' 10"	11' 10"	11' 10"
Overall Height (Suspension Deflated)	11' 7"	11' 7"	11' 7"	11' 7"
Overall Width (maximum) ^{5, 6}	102"	102"	102"	102"
Interior Height (maximum)	84"	84"	84"	84"
Interior Width (maximum)	96"	96"	96"	96"
Patio Awning Width	17'	20'	17'	17'
Interior Storage (cu. ft.)	140	170	160	164
Exterior Storage (cu. ft.)	133	161	161	140
Fresh Water Holding Tank (gal)	77	77	77	77
Grey Water Holding Tank (gal)	60	60	60	60
Black Water Holding Tank (gal)	32	32	32	32
Appliance Propane Tank (gal) (WC) ⁷	28.2	28.2	28.6	28.6
Water Heater Tank (gal)	6	6	6	6

COPPER SUNSET

CABINETRY

SOFA

ACCENT

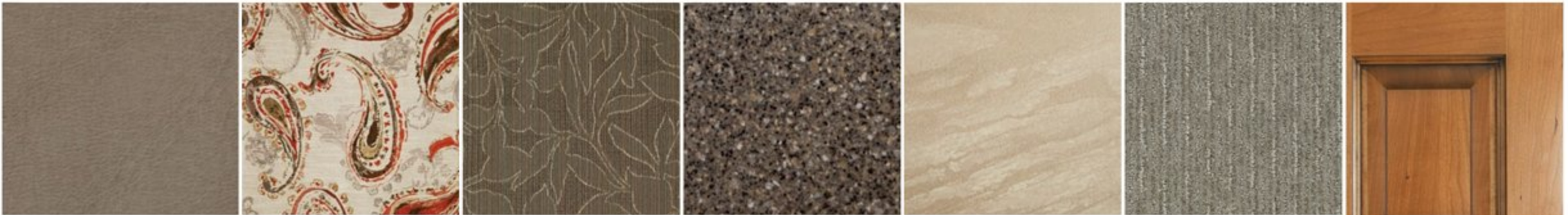
BEDSPREAD

COUNTERTOP

FLOORING

CARPET

GLAZED FULTON CHERRY



LINEN RETREAT

SOFA

ACCENT

BEDSPREAD

COUNTERTOP

FLOORING

CARPET

GLAZED HILLSIDE CHERRY



Addendums

- GVWR (Gross Vehicle Weight Rating) is the maximum permissible weight of this fully loaded motorhome. The GVWR is equal to or greater than the sum of the (UVW) unloaded vehicle weight plus the (OCCC) occupant cargo-carrying capacity*.
- GAWR (Gross Axle Weight Rating) is the maximum permissible loaded weight a specific axle is designed to carry.
- GCWR (Gross Combined Weight Rating) is the value specified by the motorhome manufacturer as the maximum allowable loaded weight of this motorhome with its towed vehicle. Towing and braking capacities may be different. Refer to Holiday Rambler and chassis manufacturer's manuals for complete information.
- Length measured from front bumper to rear bumper (excludes accessories).
- Excludes safety equipment and awnings.
- Motorhomes feature a body width over 96" which will restrict your access to certain roads. Before purchasing, you should research any state and/or province road laws which may affect your usage.
- Tank manufacturer's listed water capacity (WC). Actual propane capacity is 80% of water listing as required by the safety code.

† The chassis manufacturer recommends the installation of a supplemental brake control system to activate the brakes on the vehicle or trailer you are towing. Hitch receiver ratings expressed are maximum for the hitch receiver installed and may require the purchase of additional equipment that is dependent on the weight of the towed load. Consult with hitch receiver manufacturer for further information.

* UVW and OCCC are found on the label containing the federal certification tag in each RV.

†† The Minimum Towable Load of this vehicle is the available weight capacity, up to GCWR, when the coach is fully loaded to maximum GVWR. However, if the coach is loaded to something less than maximum GVWR, that extra available weight capacity can be added to your Towable Load. For example, if your coach is loaded to 1000lbs less than maximum GVWR, your Towable Load increases accordingly. Do not exceed the hitch rating weight, GVWR or GCWR.

IMPORTANT—PLEASE READ

Product information, photography and illustrations included in this publication were as accurate as possible at the time of printing. For further product information and changes, please visit our website at www.holidayrambler.com or contact your local Holiday Rambler dealer. Prices, materials, design and specifications are subject to change without notice. All weights, fuel, liquid capacities and dimensions are approximate. Holiday Rambler has designed its recreational vehicles to provide a variety of uses for customers. Each vehicle features optimal seating, sleeping, storage and fluid capacities. The user is responsible for selecting the proper combination of loads (i.e., occupants, equipment, fluids, cargo, etc.) to ensure that the vehicle's capacities are not exceeded.

CONTACT US

To locate a dealer near you, visit our website at www.holidayrambler.com or call 1-877-252-4666. We can also be contacted at Holiday Rambler Customer Relations, P.O. Box 1007, Decatur, IN 46733.