



DESIGNER™

2016

ELEVATE YOUR EXPECTATION
#LETSJAYCO

2016 DESIGNER LUXURY FIFTH WHEEL



2
YEAR
WARRANTY



DESIGNER™

2016

ELEVATE YOUR EXPECTATION
#LETSJAYCO

2016 DESIGNER LUXURY FIFTH WHEEL



2
YEAR
WARRANTY



#LETSJAYCO

When you travel with Jayco, fun is the only thing on the agenda. That's because we go the extra mile so you can live in the moment. From comfortable, amenity-packed floorplans to weather-shielding insulation and superior frame construction, you'll have everything you need to adventure every day and make yourself at home every night. Let's get away. Let's make it count. Let's Jayco—and make memories that last a lifetime.

GENERATIONS OF FAMILY FUN





#LETSJAYCO

When you travel with Jayco, fun is the only thing on the agenda. That's because we go the extra mile so you can live in the moment. From comfortable, amenity-packed floorplans to weather-shielding insulation and superior frame construction, you'll have everything you need to adventure every day and make yourself at home every night. Let's get away. Let's make it count. Let's Jayco—and make memories that last a lifetime.

GENERATIONS OF FAMILY FUN



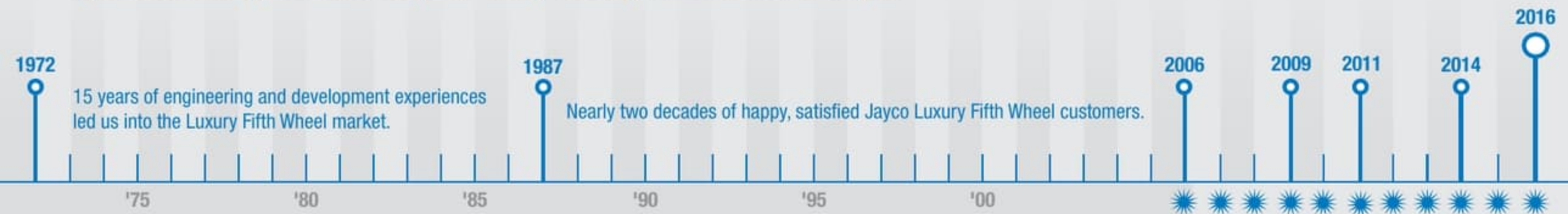
DESIGNER™

LIVE THE LEGACY

When Jayco founder Lloyd Bontrager set out to build a better camping trailer nearly 50 years ago, he probably couldn't have imagined the lavish craftsmanship, awe-inspiring floorplans and stunning residential amenities we'd accomplish years later. Today, his legacy of excellence lives on—with Luxury Fifth Wheels that are as plush as they come.

NEARLY 50 YEARS OF ENGINEERING, LISTENING, LEARNING AND EVOLVING

Jayco has been building fifth wheels for nearly a half-century—and Luxury Fifth Wheels for almost 30 years.



1972 Jayco introduces its first fifth wheel, the Wonderland

1987 Jayco introduces its first Luxury Fifth Wheel, the Designer

2006 Jayco fifth wheels win a DSI award—and we've won it every year since


2009 Engineering breakthroughs: Jayco introduces a drop-frame design and wide-stance landing gear

2011 Jayco introduces the Pinnacle line, which raises the bar in the Luxury Fifth Wheel market

2014 Jayco debuts the 375BHFS Eagle Premier, a SuperSlide bunk model that overtakes the luxury market

2016 The North Point line is born, and the Designer is reborn—raising the bar again in the luxury market



 DSI award win

The DSI award, based on a survey of hundreds of dealers in the U.S. and Canada, takes into account product quality, value, service/support and more.

SHARE YOUR PHOTOS AND STORIES ON SOCIAL MEDIA WITH [#LETSJAYCO](https://www.jayco.com/letsjayco).



The Jayco logo features a stylized bird in flight above the word "Jayco" in a bold, sans-serif font.

Generations of family fun.

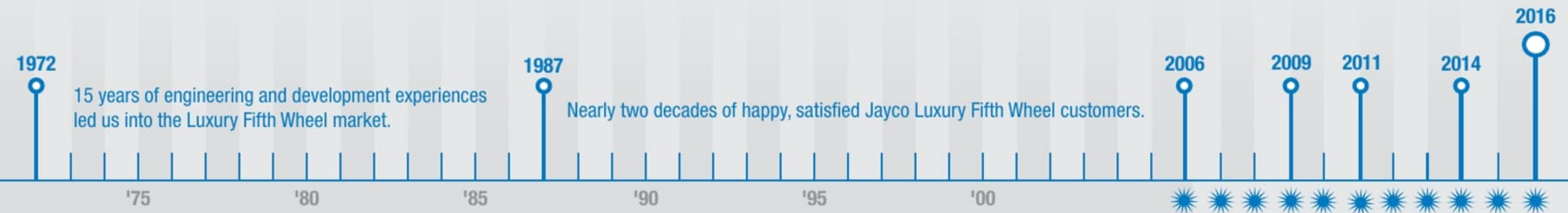
DESIGNER™

LIVE THE LEGACY

When Jayco founder Lloyd Bontrager set out to build a better camping trailer nearly 50 years ago, he probably couldn't have imagined the lavish craftsmanship, awe-inspiring floorplans and stunning residential amenities we'd accomplish years later. Today, his legacy of excellence lives on—with Luxury Fifth Wheels that are as plush as they come.

NEARLY 50 YEARS OF ENGINEERING, LISTENING, LEARNING AND EVOLVING

Jayco has been building fifth wheels for nearly a half-century—and Luxury Fifth Wheels for almost 30 years.



1972 Jayco introduces its first fifth wheel, the Wonderland

1987 Jayco introduces its first Luxury Fifth Wheel, the Designer

2006 Jayco fifth wheels win a DSI award—and we've won it every year since

2009 Engineering breakthroughs: Jayco introduces a drop-frame design and wide-stance landing gear

2011 Jayco introduces the Pinnacle line, which raises the bar in the Luxury Fifth Wheel market

2014 Jayco debuts the 375BHFS Eagle Premier, a SuperSlide bunk model that overtakes the luxury market

2016 The North Point line is born, and the Designer is reborn—raising the bar again in the luxury market



 DSI award win

The DSI award, based on a survey of hundreds of dealers in the U.S. and Canada, takes into account product quality, value, service/support and more.

SHARE YOUR PHOTOS AND STORIES ON SOCIAL MEDIA WITH [#LETSJAYCO](https://www.instagram.com/letsjayco).



Jayco
Generations of family fun.

LUXURY FIFTH WHEEL PACKAGE



1



2



3



4



5



6



7



8



9

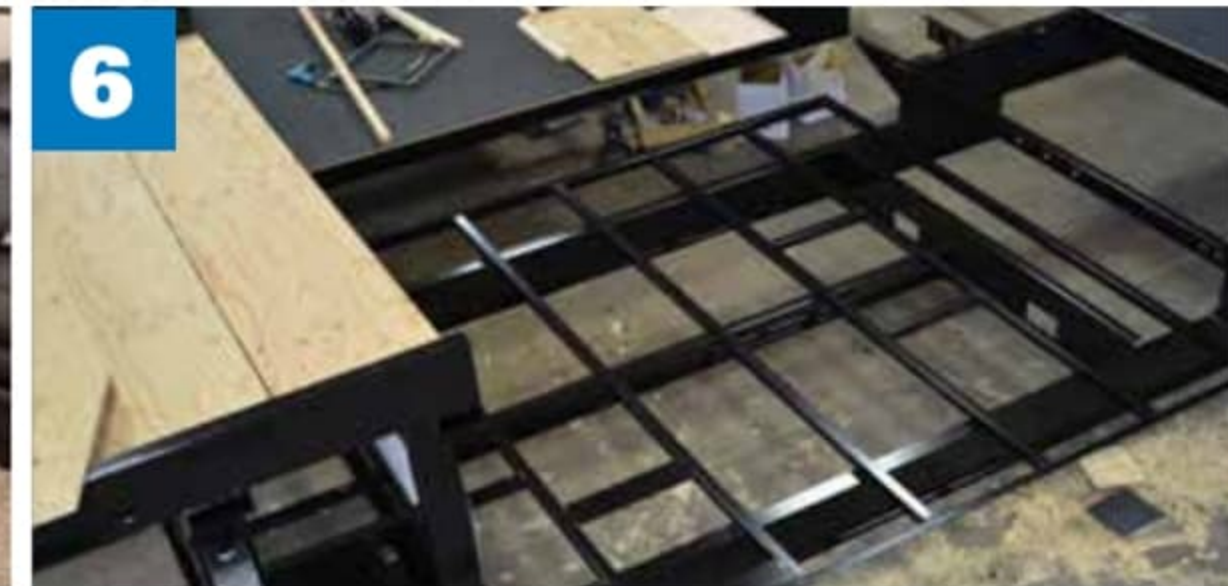
**Indulge and Impress**

Premium features come standard, thanks to our Luxury Fifth Wheel and Designer Advantage Packages. They're the apex of towable comfort—where opulence meets unbeatable value. Now that's an indulgence you can feel good about.

LUXURY FIFTH WHEEL PACKAGE:

- 6-point electric auto-leveling system (1)
- Backup camera prep; camera and monitor optional (2)
- Carefree® power awning with Flex Guard fabric shield (3)
- Franklin™ American-made residential furniture (5)
- Magnum Frame System (6)
- Magnum Truss™ XL6 Roof System (7)
- Helix Cooling System with Whisper Quiet technology (8)
- Quad-tread aluminum entrance steps (9)
- Bluetooth®/HDMI® high-output entertainment system
- Cargo accessory receiver
- Electric thermostatically controlled fireplace
- Keyless main entrance door
- LED exterior lighting
- MOR/ryde® pin box
- Oversized battery compartment
- Painted gelcoat fiberglass front cap
- Power kitchen vent with wall controls
- Sidewall and roof-mount solar prep
- Whole coach water purification system

LUXURY FIFTH WHEEL PACKAGE

**Indulge and Impress**

Premium features come standard, thanks to our Luxury Fifth Wheel and Designer Advantage Packages. They're the apex of towable comfort—where opulence meets unbeatable value. Now that's an indulgence you can feel good about.

LUXURY FIFTH WHEEL PACKAGE:

- 6-point electric auto-leveling system (1)
- Backup camera prep; camera and monitor optional (2)
- Carefree® power awning with Flex Guard fabric shield (3)
- Indoor/outdoor central vacuum system with kick pan (4)
- Franklin™ American-made residential furniture (5)
- Magnum Frame System (6)
- Magnum Truss™ XL6 Roof System (7)
- Helix Cooling System with Whisper Quiet technology (8)
- Quad-tread aluminum entrance steps (9)
- Bluetooth®/HDMI® high-output entertainment system
- Cargo accessory receiver
- Electric thermostatically controlled fireplace
- Keyless main entrance door
- LED exterior lighting
- MOR/ryde® pin box
- Oversized battery compartment
- Painted gelcoat fiberglass front cap
- Power kitchen vent with wall controls
- Sidewall and roof-mount solar prep
- Whole coach water purification system

DESIGNER ADVANTAGE PACKAGE



DESIGNER ADVANTAGE PACKAGE:

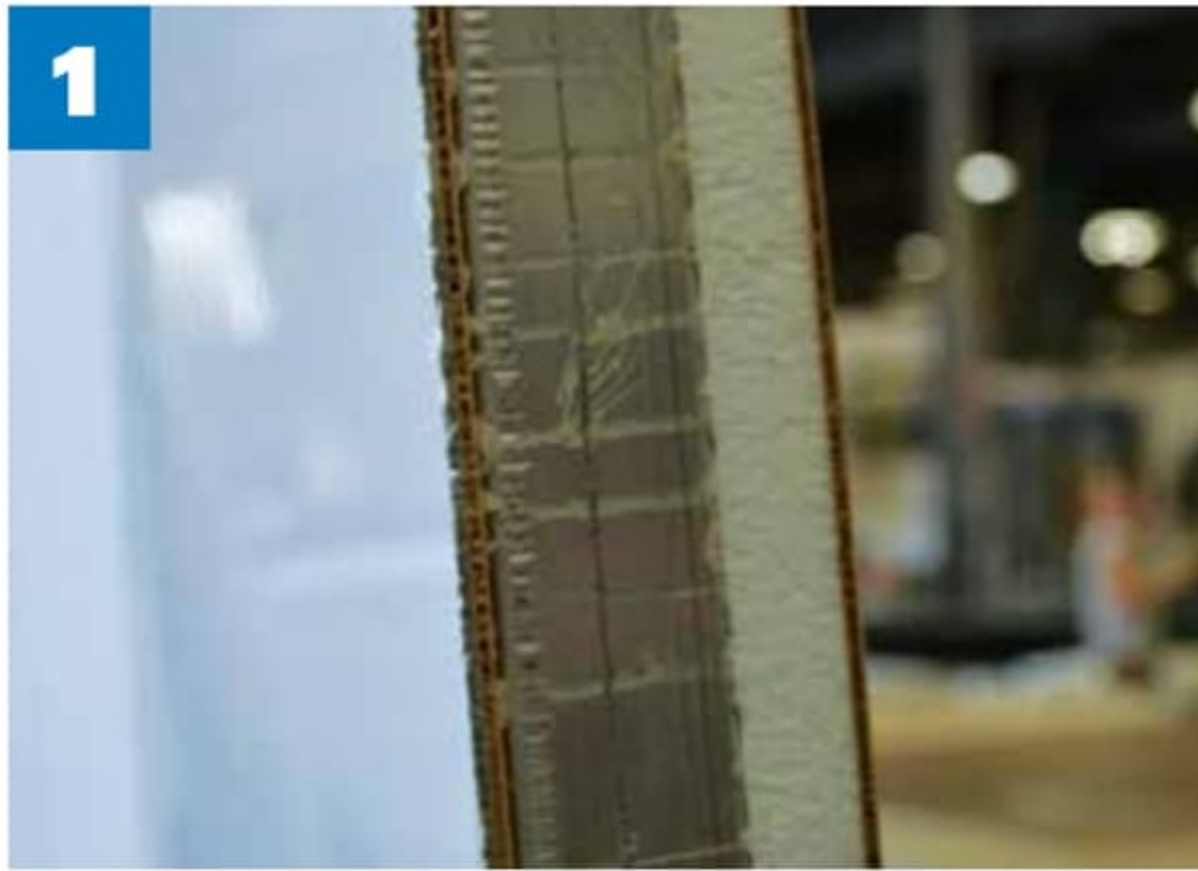
- Mega-Wall double-layer laminated sidewalls (1)
- Residential dishwasher (2)
- MyRV digital command system—featuring 7-inch command center tablet; Wi-Fi Hub; multiplex lighting; tank monitoring; bedroom and living area digital controls (3)
- Oversized apron-style stainless steel sink (4)
- Residential hardwood cabinet crown molding (5)
- Kitchen master storage and utility system—featuring cutting board drawer above wastebasket; pots and pans

drawers; drawer organizers; and convenient sink cover storage (6)

- 30,000-BTU dual Whisper Quiet A/C system
- 39-inch hidden bedroom LED HDTV
- Tree Topper 8-foot main living area slideouts
- 8,000-pound axles
- 17.5-inch H-rated tires and custom rims
- Gel 360—front cap, rear cap and sidewalls all gelcoat fiberglass
- Induction-style cooktop
- King spa bathrooms with oversized showers

- Multiplex lighting
- LED-lighted slideout fascia and window treatments in living areas
- MOR/ryde LRE4100™ rubberized suspension system
- Stainless steel convection microwave oven
- Triple 30-pound LP capacity (90 pounds total)
- 80-inch Jayco Luxury Sleep System Gel Cool memory-foam mattress

DESIGNER ADVANTAGE PACKAGE



DESIGNER ADVANTAGE PACKAGE:

- Mega-Wall double-layer laminated sidewalls (1)
- Residential dishwasher (2)
- MyRV digital command system—featuring 7-inch command center tablet; Wi-Fi Hub; multiplex lighting; tank monitoring; bedroom and living area digital controls (3)
- Oversized apron-style stainless steel sink (4)
- Residential hardwood cabinet crown molding (5)
- Kitchen master storage and utility system—featuring cutting board drawer above wastebasket; pots and pans

drawers; drawer organizers; and convenient sink cover storage (6)

- 30,000-BTU dual Whisper Quiet A/C system
- 39-inch hidden bedroom LED HDTV
- Tree Topper 8-foot main living area slideouts
- 8,000-pound axles
- 17.5-inch H-rated tires and custom rims
- Gel 360—front cap, rear cap and sidewalls all gelcoat fiberglass
- Induction-style cooktop
- King spa bathrooms with oversized showers

- Multiplex lighting
- LED-lighted slideout fascia and window treatments in living areas
- MOR/ryde LRE4100™ rubberized suspension system
- Stainless steel convection microwave oven
- Triple 30-pound LP capacity (90 pounds total)
- 80-inch Jayco Luxury Sleep System Gel Cool memory-foam mattress



39FL INTERIOR



37RS BATH



39FL KITCHEN



37RS BEDROOM



39FL INTERIOR



37RS BATH



39FL KITCHEN



37RS BEDROOM



37RS TOE-KICK NIGHT LIGHTS



37RS CONVERTIBLE DINETTE



39FL BIKE RACK



37RS INTERIOR



37RS TOE-KICK NIGHT LIGHTS



37RS CONVERTIBLE DINETTE

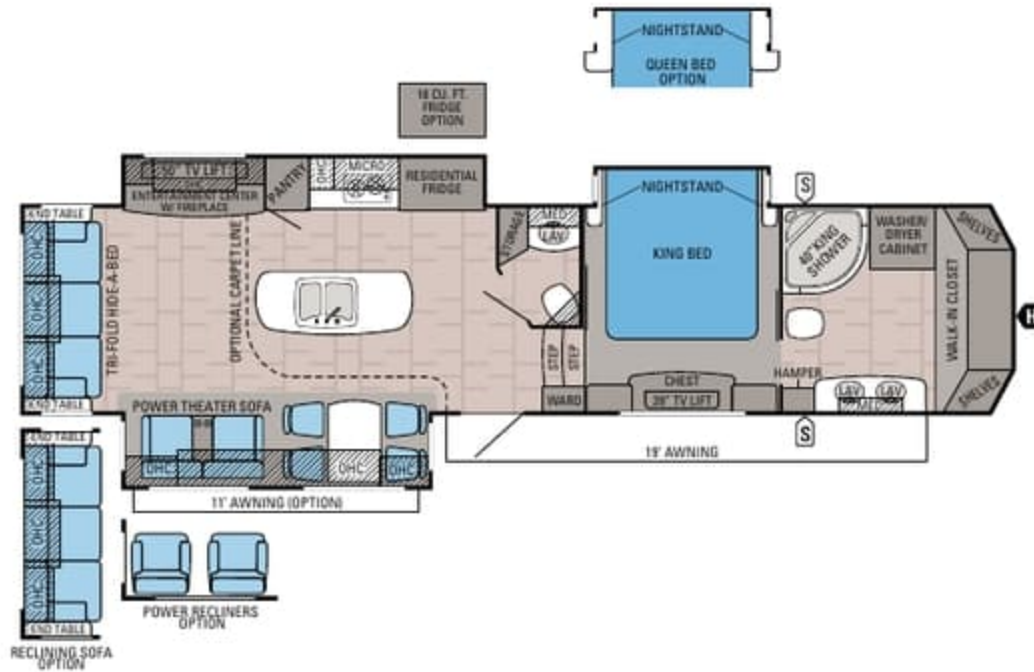


39FL BIKE RACK

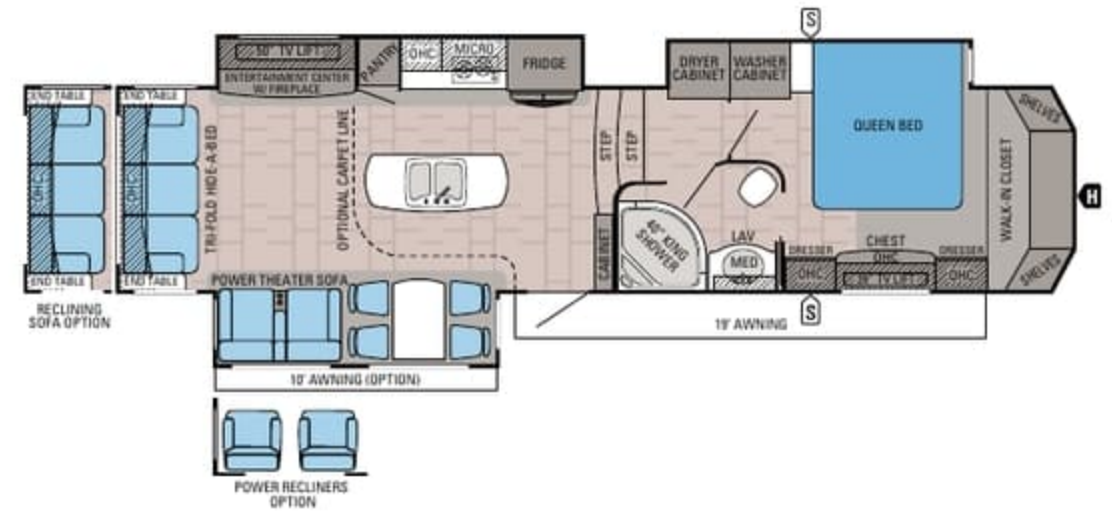


37RS INTERIOR

DESIGNER FLOORPLANS

**DESIGNER | 37FB**

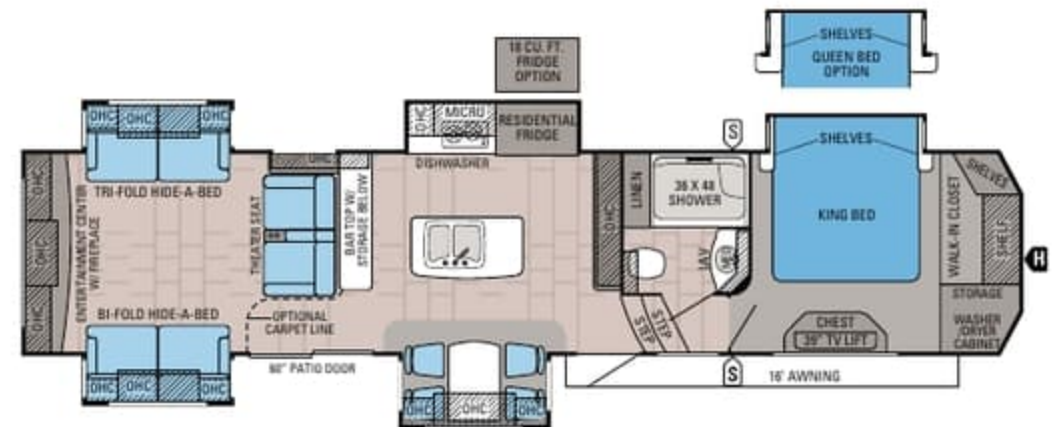
Ext. Length: **TBD** Ext. Height: **TBD** Unloaded Wt. (lbs.): **TBD** Sleeps: **4**

**DESIGNER | 37RS**

Ext. Length: **39' 10"** Ext. Height: **161"** Unloaded Wt. (lbs.): **14,265** Sleeps: **4**

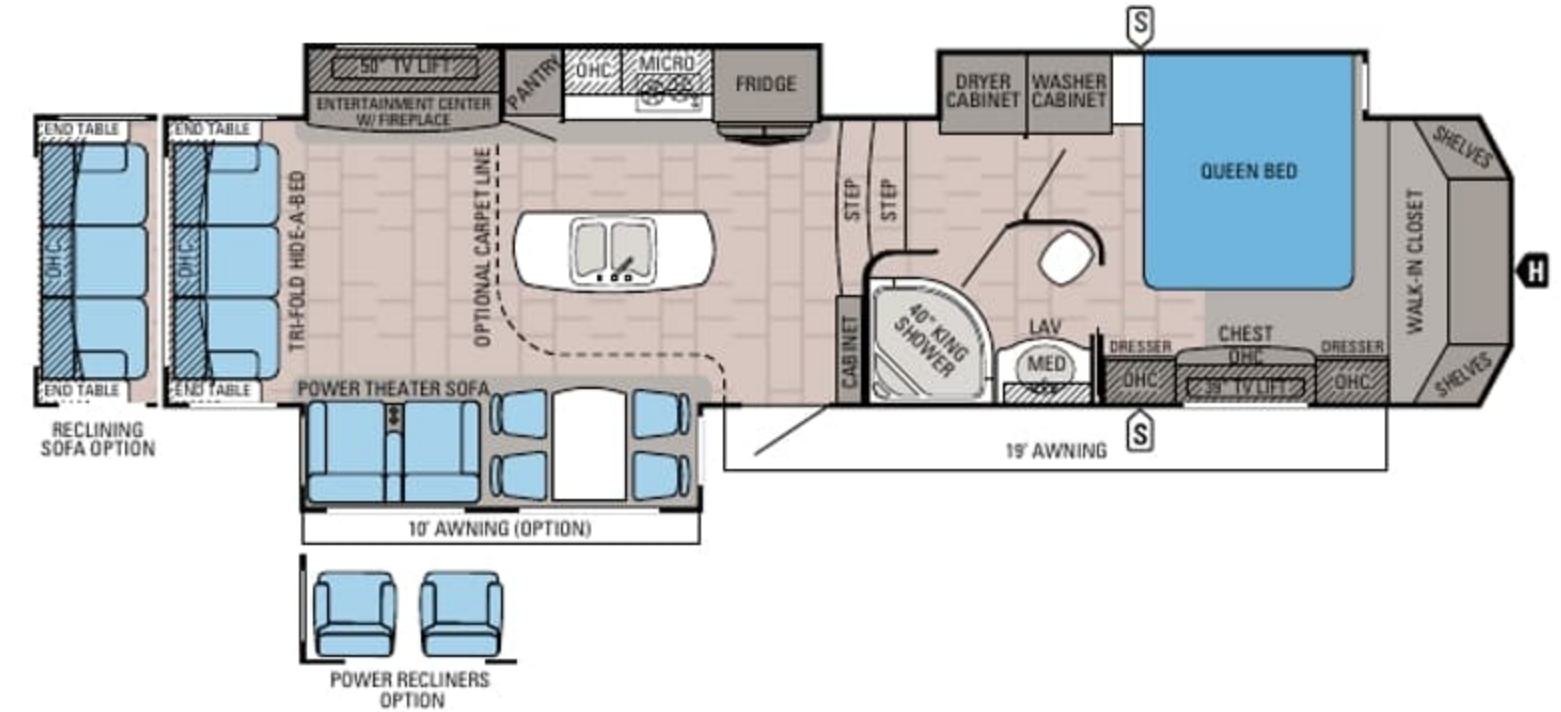
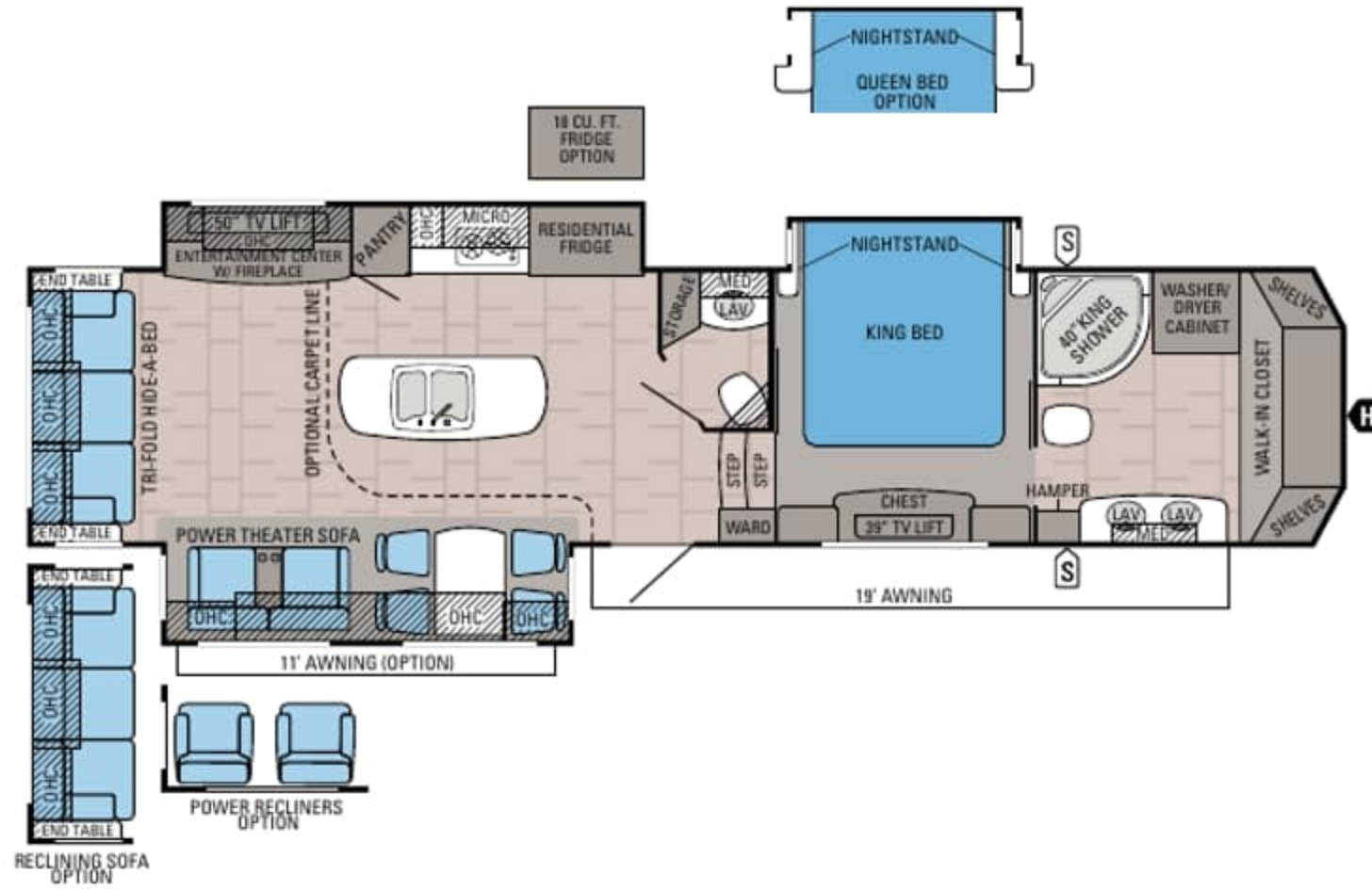
**DESIGNER | 39FL**

Ext. Length: **41' 7"** Ext. Height: **160"** Unloaded Wt. (lbs.): **15,200** Sleeps: **4-5**

**DESIGNER | 39RE**

Ext. Length: **42' 3"** Ext. Height: **161"** Unloaded Wt. (lbs.): **15,155** Sleeps: **4-6**

DESIGNER FLOORPLANS

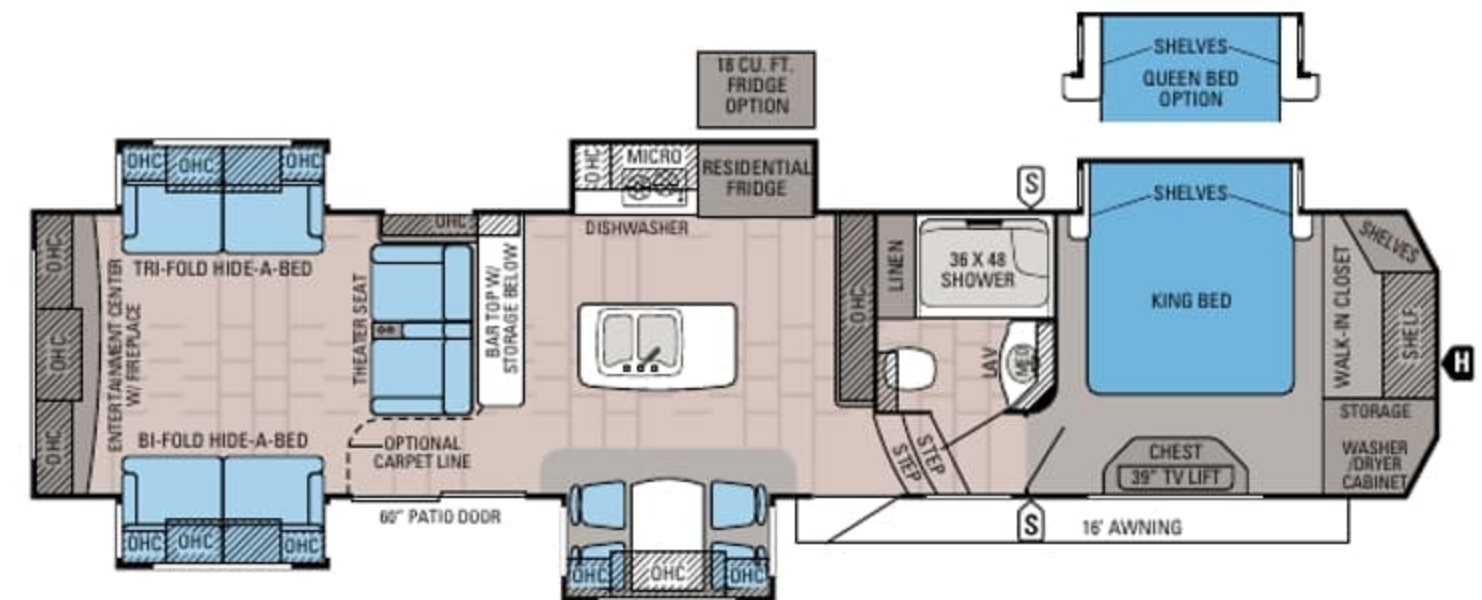
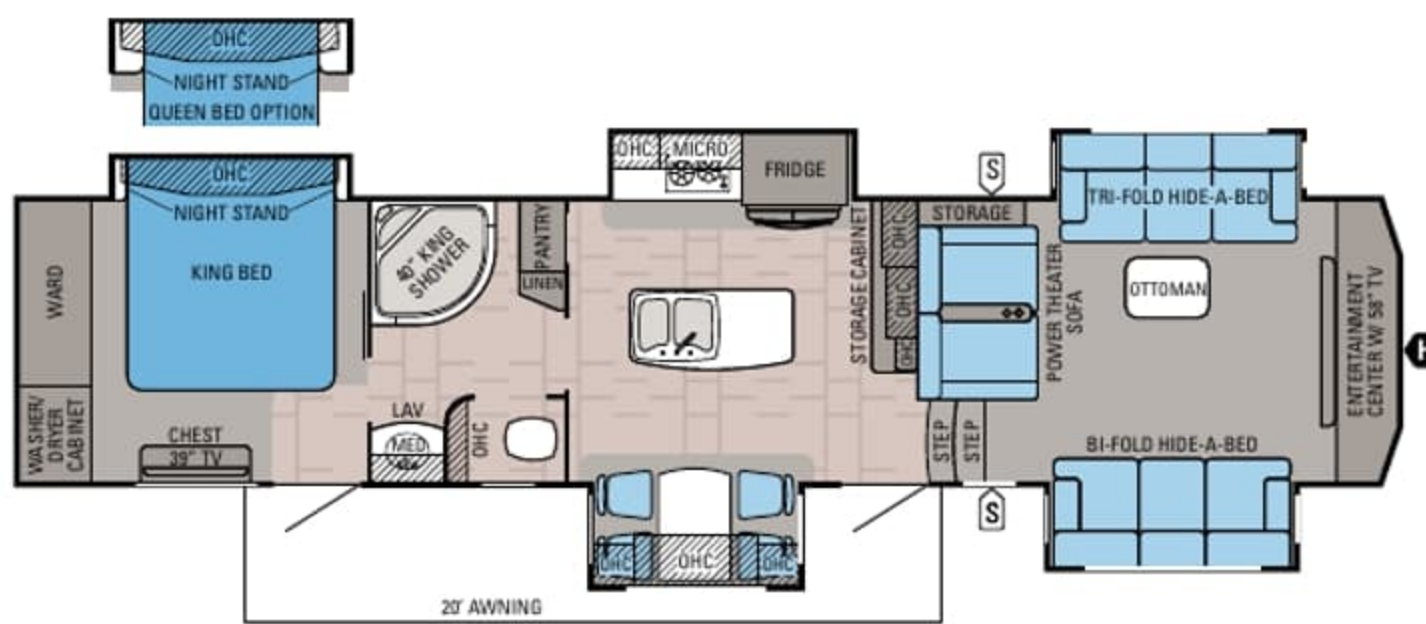


DESIGNER | 37FB

Ext. Length: TBD Ext. Height: TBD Unloaded Wt. (lbs.): TBD Sleeps: 4

DESIGNER | 37RS

Ext. Length: 39' 10" Ext. Height: 161" Unloaded Wt. (lbs.): 14,265 Sleeps: 4



DESIGNER | 39FL

Ext. Length: 41' 7" Ext. Height: 160" Unloaded Wt. (lbs.): 15,200 Sleeps: 4-5

DESIGNER | 39RE

Ext. Length: 42' 3" Ext. Height: 161" Unloaded Wt. (lbs.): 15,155 Sleeps: 4-6

INTERIOR DÉCOR

DUNES



MIDNIGHT



ROSEWOOD



STORMCLOUD



DESIGNER SPECIFICATIONS

MODELS	DIMENSIONS						WEIGHTS (LBS.)				TANKS (GALS.)			
	FLOORPLAN	TOTAL EXTERIOR LENGTH	EXTERIOR TRAVEL LENGTH*	EXTERIOR WIDTH	EXTERIOR HEIGHT (WITH A/C)	EXTERIOR HEIGHT (WITH OPTIONAL BEDROOM A/C)	INTERIOR HEIGHT (UPPER LEVEL)	UNLOADED VEHICLE WEIGHT	DRY HITCH WEIGHT	GROSS VEHICLE WEIGHT RATING	CARGO CARRYING CAPACITY	FRESH WATER CAPACITY (INCLUDES WATER HEATER)	GREY WASTE WATER CAPACITY	BLACK WASTE WATER CAPACITY
37FB	TBD	TBD	102"	TBD	TBD	85"	TBD	TBD	TBD	TBD	TBD	85	82	100
37RS	39' 10"	38' 8"	102"	161"	161"	85"	14,265	2,995	17,500	3,235	85	95	50	
39FL	41' 7"	40' 5"	102"	160"	160"	85"	15,200	3,085	17,995	2,795	85	117	37	
39RE	42' 3"	41' 1"	102"	161"	161"	85"	15,155	2,745	17,995	2,840	85	95	50	

*Distance from the pin box to the bumper; total exterior length may be longer.

Gross Vehicle Weight Rating (GVWR): The maximum permissible weight of the motorhome, including the Unloaded Vehicle Weight (UVW) plus passengers, personal items, all cargo, fluids, options and dealer-installed accessories. The GVWR is equal to or greater than the sum of the UVW and the Cargo Carrying Capacity.

Gross Combined Weight Rating (GCWR): The maximum allowable combined weight of the motorhome used as a tow vehicle and the attached towed vehicle.

It is important for your safety and enjoyment that you are aware of the weights and tow ratings of the RV you select. Consult a competent advisor for questions or advice. Whether you are new to RVing or a veteran, get a feel for the performance of your RV before heading out on the roadways. When you tow a vehicle with your RV, you must drive differently than when you drive a single vehicle. Practice hooking up, driving, backing up and braking in a safe environment or seek out professional instruction. Jayco affixes a weight label to each RV which lists weight information for that vehicle. Refer to that label to verify the vehicle will meet your requirements. See specifications chart above.

FULL-BODY PAINT OPTIONS



CRIMSON WAVE



CARBON STEEL



HORIZON SANDS

INTERIOR DÉCOR

DUNES



MIDNIGHT



ROSEWOOD



STORMCLOUD



DESIGNER SPECIFICATIONS

MODELS	DIMENSIONS						WEIGHTS (LBS.)				TANKS (GALS.)			
	FLOORPLAN	TOTAL EXTERIOR LENGTH	EXTERIOR TRAVEL LENGTH*	EXTERIOR WIDTH	EXTERIOR HEIGHT (WITH A/C)	EXTERIOR HEIGHT (WITH OPTIONAL BEDROOM A/C)	INTERIOR HEIGHT (UPPER LEVEL)	UNLOADED VEHICLE WEIGHT	DRY HITCH WEIGHT	GROSS VEHICLE WEIGHT RATING	CARGO CARRYING CAPACITY	FRESH WATER CAPACITY (INCLUDES WATER HEATER)	GREY WASTE WATER CAPACITY	BLACK WASTE WATER CAPACITY
37FB	TBD	TBD	102"	TBD	TBD	85"	TBD	TBD	TBD	TBD	TBD	85	82	100
37RS	39' 10"	38' 8"	102"	161"	161"	85"	14,265	2,995	17,500	3,235	85	95	50	
39FL	41' 7"	40' 5"	102"	160"	160"	85"	15,200	3,085	17,995	2,795	85	117	37	
39RE	42' 3"	41' 1"	102"	161"	161"	85"	15,155	2,745	17,995	2,840	85	95	50	

*Distance from the pin box to the bumper; total exterior length may be longer.

Gross Vehicle Weight Rating (GVWR): The maximum permissible weight of the motorhome, including the Unloaded Vehicle Weight (UVW) plus passengers, personal items, all cargo, fluids, options and dealer-installed accessories. The GVWR is equal to or greater than the sum of the UVW and the Cargo Carrying Capacity.

Gross Combined Weight Rating (GCWR): The maximum allowable combined weight of the motorhome used as a tow vehicle and the attached towed vehicle.

It is important for your safety and enjoyment that you are aware of the weights and tow ratings of the RV you select. Consult a competent advisor for questions or advice. Whether you are new to RVing or a veteran, get a feel for the performance of your RV before heading out on the roadways. When you tow a vehicle with your RV, you must drive differently than when you drive a single vehicle. Practice hooking up, driving, backing up and braking in a safe environment or seek out professional instruction. Jayco affixes a weight label to each RV which lists weight information for that vehicle. Refer to that label to verify the vehicle will meet your requirements. See specifications chart above.

FULL-BODY PAINT OPTIONS



CRIMSON WAVE



CARBON STEEL



HORIZON SANDS

STANDARDS AND OPTIONS

LUXURY FIFTH WHEEL PACKAGE

6-point electric auto-leveling system
 Backup camera/monitoring system prep
 Bluetooth/HDMI high-output entertainment system with 3-zone indoor/outdoor speakers
 Cargo accessory receiver
 Indoor/outdoor central vacuum system with kick pan
 High-efficiency, thermostat-controlled electric fireplace
 Keyless main entrance doors
 LED exterior lighting
 Magnum Frame System featuring Monster Beam gooseneck drop-frame
 Magnum Truss XL6 Roof System featuring 6-inch continuous-radius roof rafters
 MOR/ryde pin box
 Oversized battery compartment
 Painted and clear-coated gelcoat front cap
 Power kitchen vent with wall-mount controls
 Solar prep
 Helix Cooling System with Whisper Quiet technology
 Whole coach water purification system
 Oversized, aluminum, quad-tread entrance steps
 Carefree power awning with Flex Guard fabric shield and LED light strip
 Franklin American-made residential furniture

DESIGNER ADVANTAGE PACKAGE

8,000-pound axles
 17.5-inch H-rated tires and custom rims
 Mega-Wall double-layer laminated sidewalls
 30,000-BTU dual Whisper Quiet A/C system
 39-inch hidden bedroom LED HDTV
 Tree Topper 8-foot main living area slideouts
 80-inch Jayco Luxury Sleep System memory-foam mattress
 Residential dishwasher
 Gel 360 – front cap, rear cap and sidewalls all gelcoat fiberglass
 Induction-style cooktop
 King spa bathrooms with oversized showers
 LED-lighted slideout fascia and window treatments in living areas
 MOR/ryde LRE4100 rubberized suspension system
 Multiplex lighting

Oversized, stainless steel, apron-style sink
 Residential hardwood cabinet crown molding
 Stainless steel convection microwave oven
 Triple 30-pound LP capacity (90 pounds total)
 Kitchen master storage and utility system—featuring cutting board drawer above wastebasket; pots and pans drawers; drawer organizers; and convenient sink cover storage
 MyRV digital command system—featuring 7-inch command center tablet; Wi-Fi Hub; multiplex lighting; tank monitoring; bedroom and living area digital controls

CUSTOMER VALUE PACKAGE

15,000-BTU central A/C
 20-gallon refresh rate gas/electric auto-ignition Atwood water heater
 Arched interior ceiling
 Bath skylight
 Bathroom power vent
 Bedspread
 Floor safe
 Oversized folding exterior grab handle
 Frameless G20 dark-tinted windows
 LED interior lighting
 Security lights
 Slam-latch™ baggage doors
 Sofa and bed pillows
 Solid-surface kitchen countertops

STANDARD EXTERIOR EQUIPMENT

Full automotive cut-and-buff exterior paint package
 Wide-body, 102-inch frame
 Wide-stance front landing gear
 TuffShell™ vacuum-bonded, laminated walls
 Climate Shield™:

- Enclosed, insulated, heated underbelly
- High-BTU-output furnace
- Astro-Foil™ in roof and floors

 Aerodynamic front and rear cap with LED lights
 Seamless roof covering
 12-inch I-class cambered structural steel I-beams
 Super Lube™ hubs
 Completely enclosed and protected slideout mechanisms
 Frameless, dark-tinted, safety-glass windows
 30-inch x 78-inch entry door with oversized window

Exterior marine-grade speakers (2)
 Front awning arm convenience outlet
 Expansiview opera-style, floor-to-ceiling dining area windows
 Enclosed, protected basement drop-frame
 Cable TV and outlet in basement
 Stor-Galore™ pass-through basement storage with slam latches and strut assist
 Heated, enclosed Uni-Dock™ utility center
 50-amp power cord on power reel
 40,000-BTU furnace
 75-gallon fresh water tank
 50-gallon black tank capacity minimum
 Roof framed and prepped for solar panels
 Sidewall prepped for solar panels
 Cable and satellite input ports
 Digital TV antenna
 Outside grill prep
 Under-mounted spare tire
 Roof ladder
 Hitch light
 Upper-deck slideout convenience light
 MOR/ryde cargo area tool drawer
 EZ-Cord™ – cargo area extension cord access port

STANDARD INTERIOR EQUIPMENT

Custom, residential, miter-cut cherry cabinet doors with hidden hinges
 Satin-nickel, custom, residential cabinet hardware
 Hardwood cherry cabinet stiles
 Hardwood framed headboard
 Hardwood hallway steps with center carpet runners
 Iron hallway assist railing
 Iron interior assist handle
 Hardwood slideout fascias
 Decorative paneling with chair rail and baseboard in select living areas
 Decorative interior entryway light fixture
 Residential-style pantry
 Trash can drawer with butcher block cutting board drawer above
 Steel ball-bearing drawer guides, 75-pound capacity with full extension
 Residential-grade, pull-out kitchen faucet
 Water heater bypass
 23-cubic-foot residential refrigerator with water/ice in door
 1,000-watt inverter
 Residential-grade travertine-look vinyl flooring
 Shaw® R2X stain-resistant residential carpeting

"Night Light" toe-kick lighting in bedroom, bathroom and kitchen
 90-amp power center with Charge Wizard®
 Closeable and directional A/C vents
 Tri-fold hide-a-bed sofas with ottoman
 Power theater seat sofa
 Ceiling fan (n/a on 39FL)
 Class A-style hardwood ceiling mantle with LED accent lighting
 LED ceiling lights throughout
 Porcelain bath stool with foot flush
 Under-mounted stainless steel bathroom lavatory sink
 Solid-surface bathroom lavatory backsplash
 Kingston cherry cabinetry in bathrooms
 Robe hooks in bath
 Hardwood headboard
 Oversized drawer storage in bed base
 Walk-in-style front closet with dual hanging rods and cedar lining
 Mullion-style front wardrobe doors
 Washer/dryer prep (accommodates stackable unit)
 Oversized bedroom dresser storage
 Bedroom slide fascia built-in night stand storage system
 Dual USB charging centers in kitchen, near sofa in living area and near night stand in bedroom

OPTIONS

Customer Value Package with heat pump
 Kingston cherry Cabinetry Package
 Hydraulic disc brakes
 Goodyear® tires
 Queen bed
 Carpet in living area (n/a on 39FL)
 Reclining sofa (n/a on 39FL)
 Power recliner chairs (2) in lieu of theater seating (37FB)
 18-cubic-foot, 2-way Norcold® refrigerator with icemaker
 Backup camera and monitoring system
 Tailgate TV: 39-inch cargo area TV on sliding bracket
 Third ducted, 15,000-BTU A/C (39FL)
 Generator prep
 5,500-watt generator
 Extreme Weather Package: 110V heat pads on holding tanks, 12V wrapped fresh water line
 Dual-pane, all-weather windows
 Second power awning with Flex Guard (37RS, 39RE)
 Slideout awning covers
 Exterior propane gas grill

--- See pages 4-5 for details on the Luxury Fifth Wheel and Designer Advantage Packages ---

STANDARDS AND OPTIONS

LUXURY FIFTH WHEEL PACKAGE

6-point electric auto-leveling system
 Backup camera/monitoring system prep
 Bluetooth/HDMI high-output entertainment system with 3-zone indoor/outdoor speakers
 Cargo accessory receiver
 Indoor/outdoor central vacuum system with kick pan
 High-efficiency, thermostat-controlled electric fireplace
 Keyless main entrance doors
 LED exterior lighting
 Magnum Frame System featuring Monster Beam gooseneck drop-frame
 Magnum Truss XL6 Roof System featuring 6-inch continuous-radius roof rafters
 MOR/ryde pin box
 Oversized battery compartment
 Painted and clear-coated gelcoat front cap
 Power kitchen vent with wall-mount controls
 Solar prep
 Helix Cooling System with Whisper Quiet technology
 Whole coach water purification system
 Oversized, aluminum, quad-tread entrance steps
 Carefree power awning with Flex Guard fabric shield and LED light strip
 Franklin American-made residential furniture

DESIGNER ADVANTAGE PACKAGE

8,000-pound axles
 17.5-inch H-rated tires and custom rims
 Mega-Wall double-layer laminated sidewalls
 30,000-BTU dual Whisper Quiet A/C system
 39-inch hidden bedroom LED HDTV
 Tree Topper 8-foot main living area slideouts
 80-inch Jayco Luxury Sleep System memory-foam mattress
 Residential dishwasher
 Gel 360 – front cap, rear cap and sidewalls all gelcoat fiberglass
 Induction-style cooktop
 King spa bathrooms with oversized showers
 LED-lighted slideout fascia and window treatments in living areas
 MOR/ryde LRE4100 rubberized suspension system
 Multiplex lighting

Oversized, stainless steel, apron-style sink
 Residential hardwood cabinet crown molding
 Stainless steel convection microwave oven
 Triple 30-pound LP capacity (90 pounds total)
 Kitchen master storage and utility system—featuring cutting board drawer above wastebasket; pots and pans drawers; drawer organizers; and convenient sink cover storage
 MyRV digital command system—featuring 7-inch command center tablet; Wi-Fi Hub; multiplex lighting; tank monitoring; bedroom and living area digital controls

CUSTOMER VALUE PACKAGE

15,000-BTU central A/C
 20-gallon refresh rate gas/electric auto-ignition Atwood water heater
 Arched interior ceiling
 Bath skylight
 Bathroom power vent
 Bedspread
 Floor safe
 Oversized folding exterior grab handle
 Frameless G20 dark-tinted windows
 LED interior lighting
 Security lights
 Slam-latch™ baggage doors
 Sofa and bed pillows
 Solid-surface kitchen countertops

STANDARD EXTERIOR EQUIPMENT

Full automotive cut-and-buff exterior paint package
 Wide-body, 102-inch frame
 Wide-stance front landing gear
 TuffShell™ vacuum-bonded, laminated walls
 Climate Shield™:
 • Enclosed, insulated, heated underbelly
 • High-BTU-output furnace
 • Astro-Foil™ in roof and floors
 Aerodynamic front and rear cap with LED lights
 Seamless roof covering
 12-inch I-class cambered structural steel I-beams
 Super Lube™ hubs
 Completely enclosed and protected slideout mechanisms
 Frameless, dark-tinted, safety-glass windows
 30-inch x 78-inch entry door with oversized window

Exterior marine-grade speakers (2)
 Front awning arm convenience outlet
 Expansiview opera-style, floor-to-ceiling dining area windows
 Enclosed, protected basement drop-frame
 Cable TV and outlet in basement
 Stor-Galore™ pass-through basement storage with slam latches and strut assist
 Heated, enclosed Uni-Dock™ utility center
 50-amp power cord on power reel
 40,000-BTU furnace
 75-gallon fresh water tank
 50-gallon black tank capacity minimum
 Roof framed and prepped for solar panels
 Sidewall prepped for solar panels
 Cable and satellite input ports
 Digital TV antenna
 Outside grill prep
 Under-mounted spare tire
 Roof ladder
 Hitch light
 Upper-deck slideout convenience light
 MOR/ryde cargo area tool drawer
 EZ-Cord™ – cargo area extension cord access port

STANDARD INTERIOR EQUIPMENT

Custom, residential, miter-cut cherry cabinet doors with hidden hinges
 Satin-nickel, custom, residential cabinet hardware
 Hardwood cherry cabinet stiles
 Hardwood framed headboard
 Hardwood hallway steps with center carpet runners
 Iron hallway assist railing
 Iron interior assist handle
 Hardwood slideout fascias
 Decorative paneling with chair rail and baseboard in select living areas
 Decorative interior entryway light fixture
 Residential-style pantry
 Trash can drawer with butcher block cutting board drawer above
 Steel ball-bearing drawer guides, 75-pound capacity with full extension
 Residential-grade, pull-out kitchen faucet
 Water heater bypass
 23-cubic-foot residential refrigerator with water/ice in door
 1,000-watt inverter
 Residential-grade travertine-look vinyl flooring
 Shaw® R2X stain-resistant residential carpeting

“Night Light” toe-kick lighting in bedroom, bathroom and kitchen
 90-amp power center with Charge Wizard®
 Closeable and directional A/C vents
 Tri-fold hide-a-bed sofas with ottoman
 Power theater seat sofa
 Ceiling fan (n/a on 39FL)
 Class A-style hardwood ceiling mantle with LED accent lighting
 LED ceiling lights throughout
 Porcelain bath stool with foot flush
 Under-mounted stainless steel bathroom lavatory sink
 Solid-surface bathroom lavatory backsplash
 Kingston cherry cabinetry in bathrooms
 Robe hooks in bath
 Hardwood headboard
 Oversized drawer storage in bed base
 Walk-in-style front closet with dual hanging rods and cedar lining
 Mullion-style front wardrobe doors
 Washer/dryer prep (accommodates stackable unit)
 Oversized bedroom dresser storage
 Bedroom slide fascia built-in night stand storage system
 Dual USB charging centers in kitchen, near sofa in living area and near night stand in bedroom

OPTIONS

Customer Value Package with heat pump
 Kingston cherry Cabinetry Package
 Hydraulic disc brakes
 Goodyear® tires
 Queen bed
 Carpet in living area (n/a on 39FL)
 Reclining sofa (n/a on 39FL)
 Power recliner chairs (2) in lieu of theater seating (37FB)
 18-cubic-foot, 2-way Norcold® refrigerator with icemaker
 Backup camera and monitoring system
 Tailgate TV: 39-inch cargo area TV on sliding bracket
 Third ducted, 15,000-BTU A/C (39FL)
 Generator prep
 5,500-watt generator
 Extreme Weather Package: 110V heat pads on holding tanks, 12V wrapped fresh water line
 Dual-pane, all-weather windows
 Second power awning with Flex Guard (37RS, 39RE)
 Slideout awning covers
 Exterior propane gas grill

--- See pages 4-5 for details on the Luxury Fifth Wheel and Designer Advantage Packages ---

LET'S JAYCO—AND LEAVE OUR WORRIES BEHIND.



THE JAYCO DIFFERENCE

When you go with Jayco, you get one of the industry's strongest frames and rock-solid construction.

1. **Vacuum-bonded, Mega-Wall sidewalls** for better protection from the elements
2. **Automotive-grade, cut-and-buff, full-body paint package** and Gel 360 premium gelcoat fiberglass front cap, rear cap and sidewalls for a sleek, durable exterior
3. **Magnum Truss XL6 Roof System** withstands 4,500 pounds—50 percent more than other roofs
4. **Welded aluminum Magnum Frame System** for a durable, lightweight structure
5. **Double layer of fiberglass insulation** behind the front cap, plus Flexfoil® and fiberglass insulation in the floor to provide extra warmth where it's needed most—in the bedroom

6. **Painted gelcoat fiberglass front cap** withstands the rigors of the road with infused paint and gel coating, plus ¼-inch plywood bracing for additional support—not typically found on competing fifth wheels
7. **17.5-inch H-rated tires and custom rims**
8. **Hydraulic disc braking system**
9. **MOR/ryde LRE4100 rubberized suspension system** provides smoother towing and better protection from damaging road shock
10. **Helix Cooling System with Whisper Quiet technology**
11. **6-point electric leveling system**
12. **Carefree power awning** with Flex Guard fabric shield

We know that your family fun rides on our commitment to quality. So we go the extra mile to make products that last—and stand behind them longer than anyone in the business.



JAYCO'S ROOF **vs** OTHER ROOFS



4,500 POUNDS ON A JAYCO ROOF VS. OTHER ROOFS

THE MAGNUM TRUSS XL6 ROOF SYSTEM **50 percent stronger**

13. **Quad-tread aluminum entrance steps**
14. **Keyless main entrance door**
15. **Cargo accessory receiver**
16. **Sidewall and roof-mount solar prep**
17. **MOR/ryde pin box**
18. **Magnum Frame System**
19. **Backup camera**



Extend your camping season with the Jayco Climate Shield. It protects against extreme heat and extreme freezing—even in temperatures as high as 100 degrees or as low as zero degrees (Fahrenheit).*

LIVING ROOM	KITCHEN	BATHROOM	HOLDING TANK	BEDROOM
0°F ✓	0°F ✓	0°F ✓	0°F ✓	0°F ✓
100°F ✓	100°F ✓	100°F ✓	100°F ✓	100°F ✓

*Designer was tested in zero degrees F and 100 degrees F weather over an extended period of time in a controlled environment and all functions of the coach were fully operational. Testing was done in a completely controlled environment; therefore, temperatures during testing may not represent actual temperatures in nature, and cannot account for elements such as wind or moisture. In actual use, unit may not perform as well. Supplier of cooling components does not guarantee anything better than 20 degrees difference from ambient temperature. In addition, outside components are subject to freezing and require steps to properly insulate. Jayco's warranty does not cover damage caused by freezing. To learn more about Climate Shield and testing done by Jayco, visit www.jayco.com.

LET'S JAYCO—AND LEAVE OUR WORRIES BEHIND.



THE JAYCO DIFFERENCE

When you go with Jayco, you get one of the industry's strongest frames and rock-solid construction.

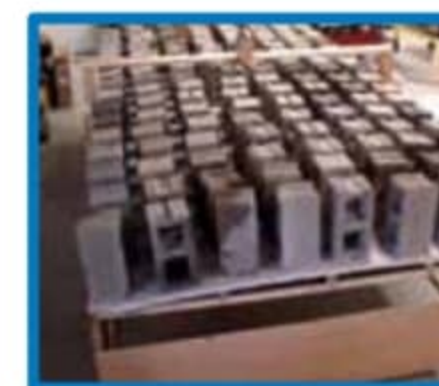
- 1. Vacuum-bonded, Mega-Wall sidewalls** for better protection from the elements
- 2. Automotive-grade, cut-and-buff, full-body paint package** and Gel 360 premium gelcoat fiberglass front cap, rear cap and sidewalls for a sleek, durable exterior
- 3. Magnum Truss XL6 Roof System** withstands 4,500 pounds—50 percent more than other roofs
- 4. Welded aluminum Magnum Frame System** for a durable, lightweight structure
- 5. Double layer of fiberglass insulation** behind the front cap, plus Flexfoil® and fiberglass insulation in the floor to provide extra warmth where it's needed most—in the bedroom

- 6. Painted gelcoat fiberglass front cap** withstands the rigors of the road with infused paint and gel coating, plus ¼-inch plywood bracing for additional support—not typically found on competing fifth wheels
- 7. 17.5-inch H-rated tires and custom rims**
- 8. Hydraulic disc braking system**
- 9. MOR/ryde LRE4100 rubberized suspension system** provides smoother towing and better protection from damaging road shock
- 10. Helix Cooling System with Whisper Quiet technology**
- 11. 6-point electric leveling system**
- 12. Carefree power awning** with Flex Guard fabric shield

We know that your family fun rides on our commitment to quality. So we go the extra mile to make products that last—and stand behind them longer than anyone in the business.



JAYCO'S ROOF **vs** OTHER ROOFS



4,500 POUNDS ON A JAYCO ROOF VS. OTHER ROOFS

THE MAGNUM TRUSS XL6 ROOF SYSTEM **50 percent stronger**

- 13. Quad-tread aluminum entrance steps**
- 14. Keyless main entrance door**
- 15. Cargo accessory receiver**
- 16. Sidewall and roof-mount solar prep**
- 17. MOR/ryde pin box**
- 18. Magnum Frame System**
- 19. Backup camera**



Extend your camping season with the Jayco Climate Shield. It protects against extreme heat and extreme freezing—even in temperatures as high as 100 degrees or as low as zero degrees (Fahrenheit).*

LIVING ROOM



KITCHEN



BATHROOM



HOLDING TANK



BEDROOM



*Designer was tested in zero degrees F and 100 degrees F weather over an extended period of time in a controlled environment and all functions of the coach were fully operational. Testing was done in a completely controlled environment; therefore, temperatures during testing may not represent actual temperatures in nature, and cannot account for elements such as wind or moisture. In actual use, unit may not perform as well. Supplier of cooling components does not guarantee anything better than 20 degrees difference from ambient temperature. In addition, outside components are subject to freezing and require steps to properly insulate. Jayco's warranty does not cover damage caused by freezing. To learn more about Climate Shield and testing done by Jayco, visit www.jayco.com.

WE START WITH ONE OF THE INDUSTRY'S **strongest** foundations

Many competitors modify or weld stock frames, which can weaken the integrity of your foundation. Jayco's custom-manufactured frames offer higher strength and durability.

Full-width outriggers: We build on full-width outriggers that are spaced 4-6 feet apart (vs. 8 feet) to better support the weight of the wall.



I-class cambered structural steel I-beams: Jayco uses a unique molded, one-piece design to prevent unit from twisting; competing three-piece I-beams can warp over time at the welded seams.

Fifth wheel frame: The frame over the truck bed is built on a superior 2-inch x 6-inch tube perimeter structure to better support the bedroom sidewalls. Competing fifth wheels have a smaller frame; these manufacturers add a sidewall support seam to compensate for expansion joints.

Learn more at StrongFoundation.Jayco.com



Generations of family fun.


Meet your Jayco Dealer



We work hard—so you can play hard. From finding the perfect Jayco for your family to providing flexible financing options and full-service support, we're here to help.

Follow Jayco



Jayco, Inc., P.O. Box 460, Middlebury, IN 46540, www.jayco.com  See dealer for further information and prices. All information in this brochure is the latest available at the time of publication approval. Jayco reserves the right to make changes and to discontinue models without notice or obligation. Photos in this brochure may show optional equipment and props for photography purposes. RVs built for sale in Canada may differ to conform to Canadian codes. ©2015 Jayco, Inc. 1015-35K Printed in U.S.A.

2
YEAR
WARRANTY

FREE

ROADSIDE
ASSISTANCE

Travel with confidence, with our industry-leading, bumper-to-front limited warranty and a year's access to Coach-Net™—the country's largest RV emergency road service.

For a copy of our 2-year limited warranty with full terms and conditions, please contact your local Jayco dealer.

eco advantage™

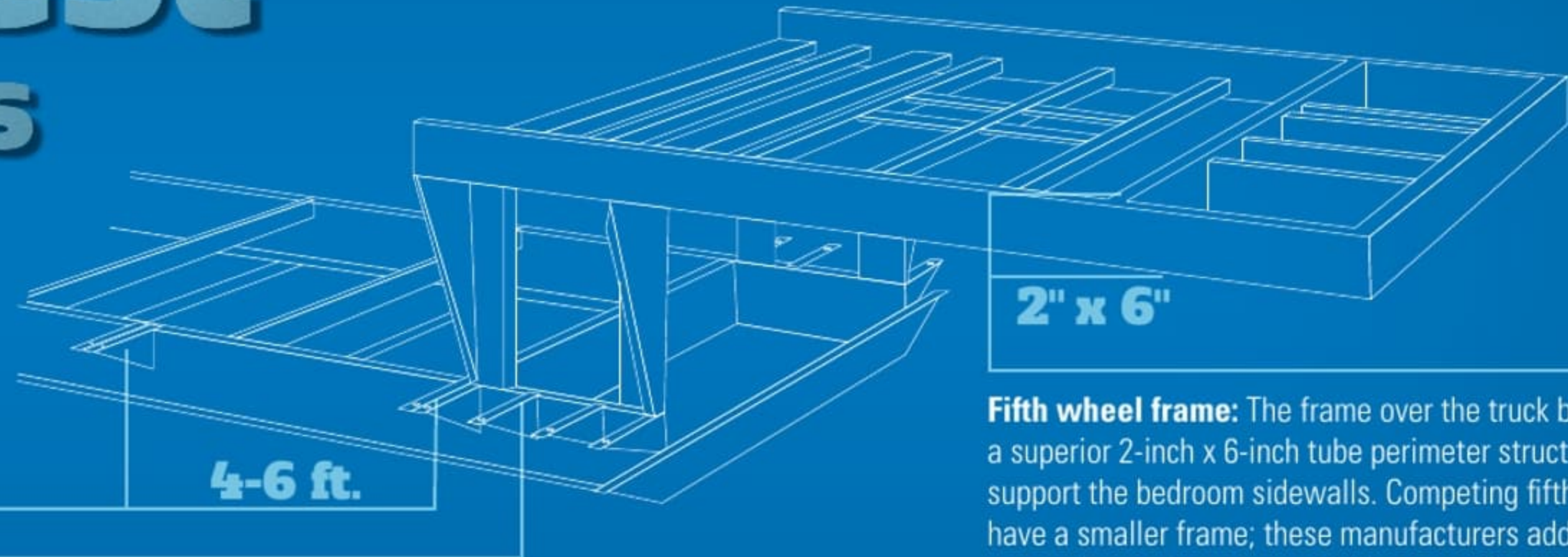
Jayco's long-term commitment to generations of family fun

After four years of increased efforts to eliminate waste, conserve energy and increase recycling, we've come a long way in building RVs that are not only better for your family—but also better for the planet. **Learn more at Jayco.com/EcoAdvantage**

WE START WITH ONE OF THE INDUSTRY'S
strongest
foundations

Many competitors modify or weld stock frames, which can weaken the integrity of your foundation. Jayco's custom-manufactured frames offer higher strength and durability.

Full-width outriggers: We build on full-width outriggers that are spaced 4-6 feet apart (vs. 8 feet) to better support the weight of the wall.



I-class cambered structural steel I-beams: Jayco uses a unique molded, one-piece design to prevent unit from twisting; competing three-piece I-beams can warp over time at the welded seams.

Fifth wheel frame: The frame over the truck bed is built on a superior 2-inch x 6-inch tube perimeter structure to better support the bedroom sidewalls. Competing fifth wheels have a smaller frame; these manufacturers add a sidewall support seam to compensate for expansion joints.

Learn more at StrongFoundation.Jayco.com



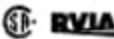
Meet your Jayco Dealer



We work hard—so you can play hard. From finding the perfect Jayco for your family to providing flexible financing options and full-service support, we're here to help.

Follow Jayco



Jayco, Inc., P.O. Box 460, Middlebury, IN 46540, www.jayco.com  See dealer for further information and prices. All information in this brochure is the latest available at the time of publication approval. Jayco reserves the right to make changes and to discontinue models without notice or obligation. Photos in this brochure may show optional equipment and props for photography purposes. RVs built for sale in Canada may differ to conform to Canadian codes. ©2015 Jayco, Inc. 1015-35K Printed in U.S.A.

2
YEAR
 WARRANTY

FREE

ROADSIDE
 ASSISTANCE

Travel with confidence, with our industry-leading, bumper-to-front limited warranty and a year's access to Coach-Net™—the country's largest RV emergency road service.

For a copy of our 2-year limited warranty with full terms and conditions, please contact your local Jayco dealer.

eco advantage™

Jayco's long-term commitment to generations of family fun

After four years of increased efforts to eliminate waste, conserve energy and increase recycling, we've come a long way in building RVs that are not only better for your family—but also better for the planet. Learn more at Jayco.com/EcoAdvantage