



NORTH
POINT™

2016

UNWIND ON YOUR TERMS
#LETSJAYCO

2016 NORTH POINT LUXURY FIFTH WHEEL



2
YEAR
WARRANTY



NORTH
POINT™

2016

UNWIND ON YOUR TERMS
#LETSJAYCO

2016 NORTH POINT LUXURY FIFTH WHEEL



2
YEAR
WARRANTY



#LETSJAYCO

When you travel with Jayco, fun is the only thing on the agenda. That's because we go the extra mile so you can live in the moment. From comfortable, amenity-packed floorplans to weather-shielding insulation and superior frame construction, you'll have everything you need to adventure every day and make yourself at home every night. Let's get away. Let's make it count. Let's Jayco—and make memories that last a lifetime.

GENERATIONS OF FAMILY FUN



#LETSJAYCO

When you travel with Jayco, fun is the only thing on the agenda. That's because we go the extra mile so you can live in the moment. From comfortable, amenity-packed floorplans to weather-shielding insulation and superior frame construction, you'll have everything you need to adventure every day and make yourself at home every night. Let's get away. Let's make it count. Let's Jayco—and make memories that last a lifetime.

GENERATIONS OF FAMILY FUN

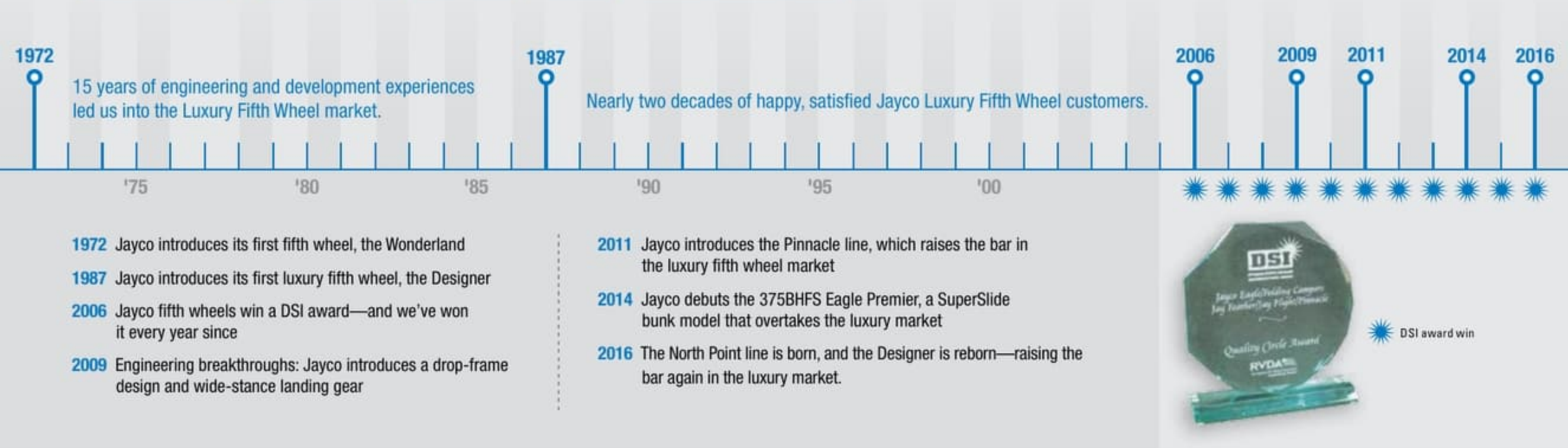
NORTH POINT

LIVE THE LEGACY

When Jayco founder Lloyd Bontrager set out to build a better camping trailer nearly 50 years ago, he probably couldn't have imagined the lavish craftsmanship, awe-inspiring floorplans and stunning residential amenities we'd accomplish years later. Today, his legacy of excellence lives on—with Luxury Fifth Wheels that are as plush as they come.

MORE THAN 40 YEARS OF ENGINEERING, LISTENING, LEARNING AND EVOLVING

Jayco has been building fifth wheels for nearly a half-century—and Luxury Fifth Wheels for almost 30 years.



SHARE YOUR PHOTOS AND STORIES ON SOCIAL MEDIA WITH [#LETSJAYCO](#).



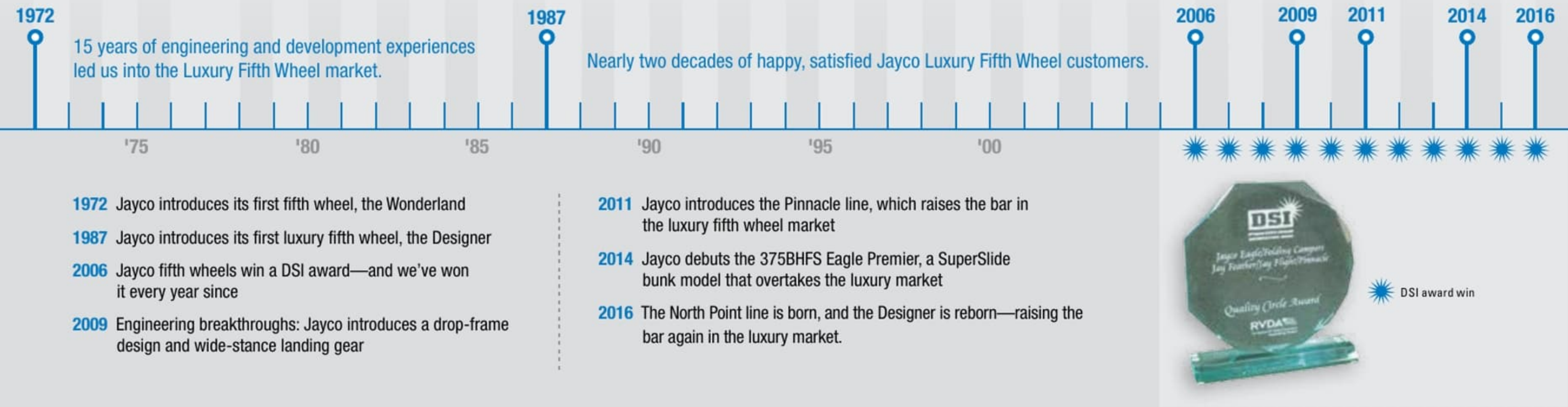
NORTH POINT

LIVE THE LEGACY

When Jayco founder Lloyd Bontrager set out to build a better camping trailer nearly 50 years ago, he probably couldn't have imagined the lavish craftsmanship, awe-inspiring floorplans and stunning residential amenities we'd accomplish years later. Today, his legacy of excellence lives on—with Luxury Fifth Wheels that are as plush as they come.

MORE THAN 40 YEARS OF ENGINEERING, LISTENING, LEARNING AND EVOLVING

Jayco has been building fifth wheels for nearly a half-century—and Luxury Fifth Wheels for almost 30 years.



SHARE YOUR PHOTOS AND STORIES ON SOCIAL MEDIA WITH [#LETSJAYCO](https://www.instagram.com/letsjayco).



LUXURY FIFTH WHEEL PACKAGE



Indulge and Impress

Premium features come standard, thanks to our Luxury Fifth Wheel and North Point Advantage packages. They're the apex of towable comfort—where opulence meets unbeatable value. Now that's an indulgence you can feel good about.

LUXURY FIFTH WHEEL PACKAGE:

- 6-point electric auto-leveling system (1)
- Backup camera prep; camera and monitor optional (2)
- Carefree® power awning with Flex Guard fabric shield (3)
- Indoor/outdoor central vacuum system with kick pan (4)
- Franklin™ American-made residential furniture (5)
- Magnum Frame System (6)
- Magnum Truss™ XL6 roof system (7)
- Helix Cooling System with Whisper Quiet technology (8)
- Quad-tread aluminum entrance steps (9)

- Bluetooth®/HDMI® high-output entertainment system
- Cargo accessory receiver
- Electric thermostatically controlled fireplace
- Keyless main entrance door
- LED exterior lighting
- MOR/ryde® pin box
- Oversized battery compartment
- Painted gelcoat fiberglass front cap
- Power kitchen vent with wall controls
- Sidewall and roof-mount solar prep
- Whole coach water purification system

LUXURY FIFTH WHEEL PACKAGE



Indulge and Impress

Premium features come standard, thanks to our Luxury Fifth Wheel and North Point Advantage packages. They're the apex of towable comfort—where opulence meets unbeatable value. Now that's an indulgence you can feel good about.

LUXURY FIFTH WHEEL PACKAGE:

- 6-point electric auto-leveling system (1)
- Backup camera prep; camera and monitor optional (2)
- Carefree® power awning with Flex Guard fabric shield (3)
- Indoor/outdoor central vacuum system with kick pan (4)
- Franklin™ American-made residential furniture (5)
- Magnum Frame System (6)
- Magnum Truss™ XL6 roof system (7)
- Helix Cooling System with Whisper Quiet technology (8)
- Quad-tread aluminum entrance steps (9)
- Bluetooth®/HDMI® high-output entertainment system
- Cargo accessory receiver
- Electric thermostatically controlled fireplace
- Keyless main entrance door
- LED exterior lighting
- MOR/ryde® pin box
- Oversized battery compartment
- Painted gelcoat fiberglass front cap
- Power kitchen vent with wall controls
- Sidewall and roof-mount solar prep
- Whole coach water purification system

NORTH POINT ADVANTAGE PACKAGE



NORTH POINT ADVANTAGE PACKAGE:

- Big-screen LED HDTVs in living areas (1)
- High-gloss, hand-rubbed hardwood cabinet doors (2)
- MOR/ryde CRE3000™ rubberized suspension system (3)
- Single blackout roller shades throughout (4)
- Remote control system for levelers, awnings, sliderooms and exterior lights (5)
- Fiberglass shower with glass enclosure (6)
- 32-inch LED HDTV in bedroom with integrated DVD player
- High-gloss premium fiberglass exterior
- 80-inch Jayco Luxury Sleep System with memory-foam mattress

NORTH POINT ADVANTAGE PACKAGE



NORTH POINT ADVANTAGE PACKAGE:

- Big-screen LED HDTVs in living areas (1)
- High-gloss, hand-rubbed hardwood cabinet doors (2)
- MOR/ryde CRE3000™ rubberized suspension system (3)
- Single blackout roller shades throughout (4)
- Remote control system for levelers, awnings, sliderooms and exterior lights (5)
- Fiberglass shower with glass enclosure (6)
- 32-inch LED HDTV in bedroom with integrated DVD player
- High-gloss premium fiberglass exterior
- 80-inch Jayco Luxury Sleep System with memory-foam mattress



375BHFS OUTSIDE KITCHEN



375BHFS BUNK AREA

NORTH POINT

STEP UP YOUR GETAWAY

Impressive upgrades—from walk-in closets to chef-inspired dream kitchens—come standard on the North Point.



377RLBH BUNK ROOM DESK



377RLBH BEDROOM



377RLBH FIREPLACE



377RLBH KITCHEN



375BHFS OUTSIDE KITCHEN



375BHFS BUNK AREA

NORTH POINT

STEP UP YOUR GETAWAY

Impressive upgrades—from walk-in closets to chef-inspired dream kitchens—come standard on the North Point.



377RLBH BUNK ROOM DESK



377RLBH BEDROOM



377RLBH FIREPLACE



377RLBH KITCHEN



375BHFS INTERIOR



377RLBH HIDE-A-BED SOFA CLOSED



377RLBH HIDE-A-BED SOFA OPEN



377RLBH INTERIOR



375BHFS INTERIOR



377RLBH HIDE-A-BED SOFA CLOSED



377RLBH HIDE-A-BED SOFA OPEN



377RLBH INTERIOR

NORTH POINT FLOORPLANS



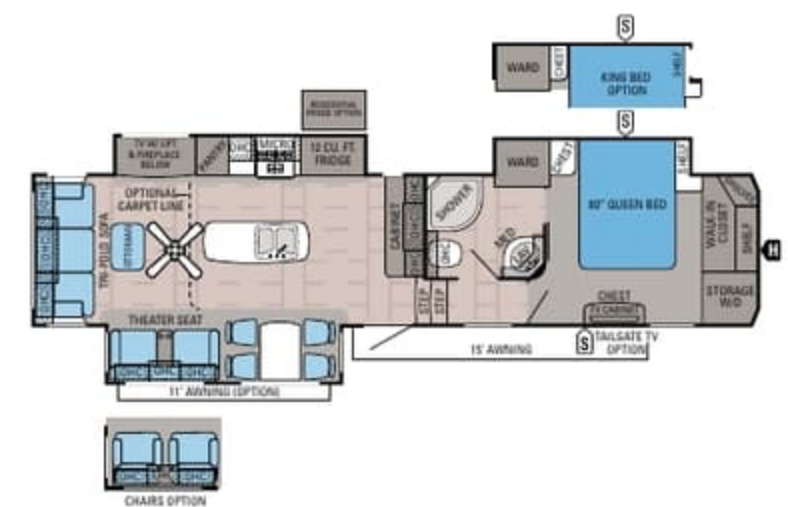
NORTH POINT | 301RETS

Ext. Length: 38' 2" Ext. Height: 159"
Unloaded Weight (lbs.): 11,650 Sleeps: 3-4



NORTH POINT | 311RKTS

Ext. Length: 38' 4" Ext. Height: 159"
Unloaded Weight (lbs.): 12,085 Sleeps: 3-4



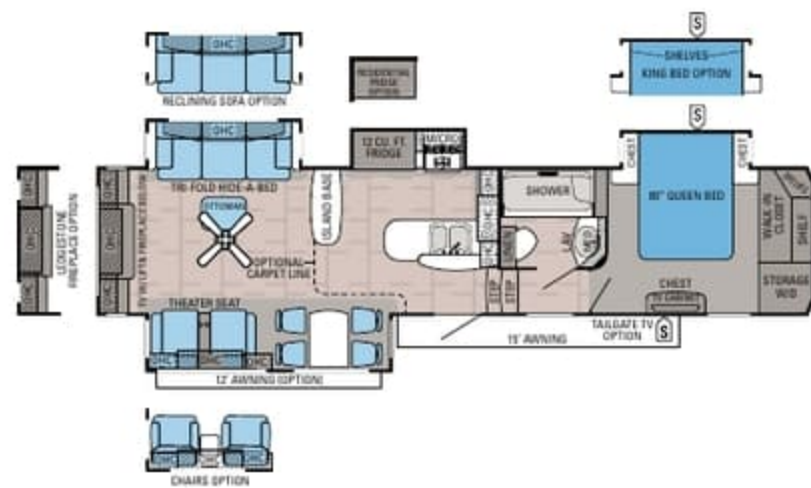
NORTH POINT | 341RLTS

Ext. Length: 39' 11" Ext. Height: 159"
Unloaded Weight (lbs.): 12,125 Sleeps: 3-4



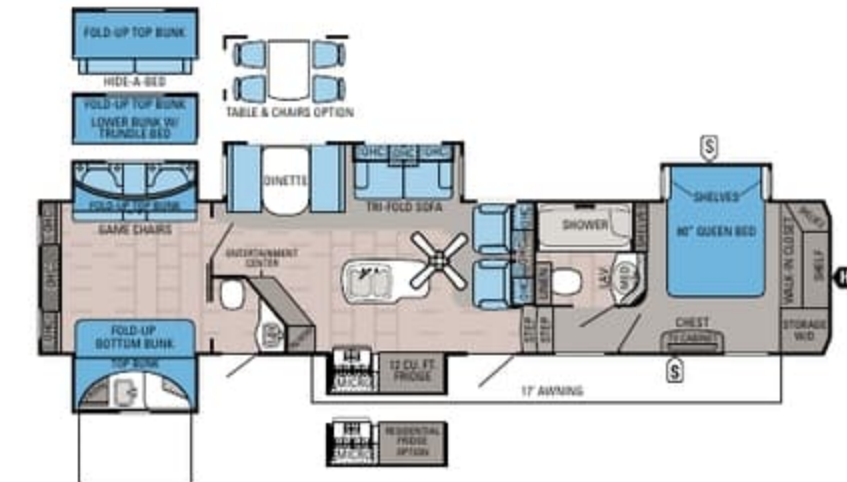
NORTH POINT | 351RSTS

Ext. Length: 40' 3" Ext. Height: 159"
Unloaded Weight (lbs.): 12,445 Sleeps: 2-3



NORTH POINT | 361REQS

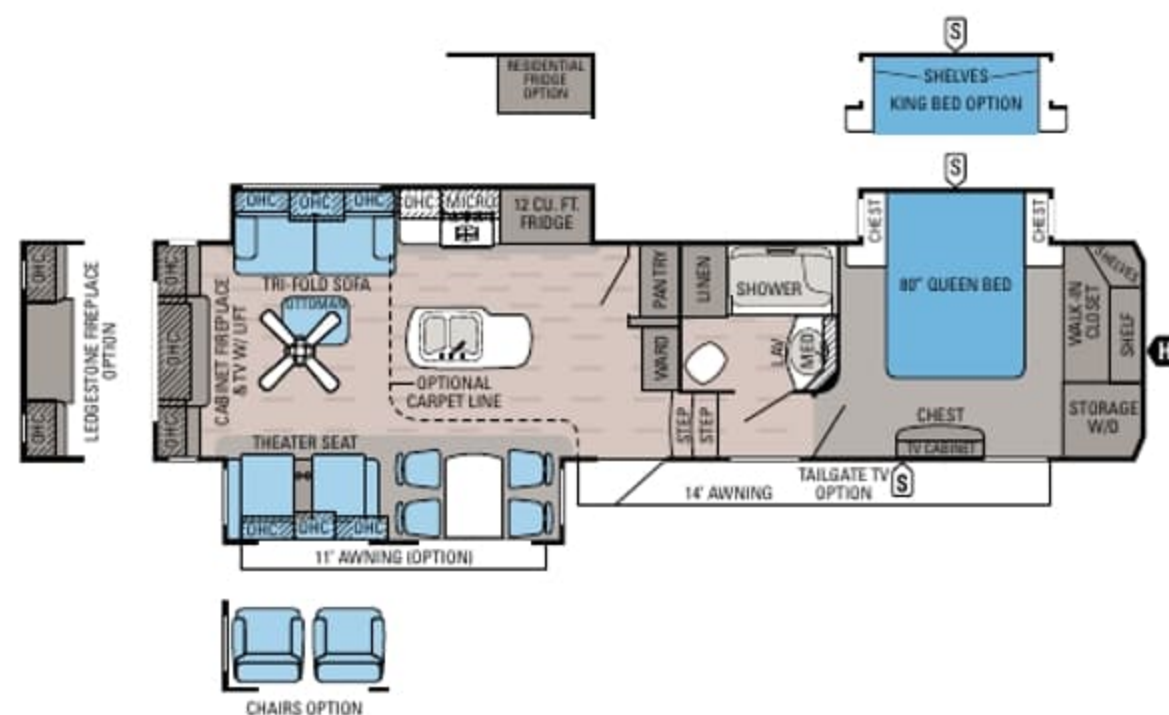
Ext. Length: 40' 7" Ext. Height: 159"
Unloaded Weight (lbs.): 12,080 Sleeps: 3-4



NORTH POINT | 375BHFS

Ext. Length: 43' 3" Ext. Height: 160"
Unloaded Weight (lbs.): 13,570 Sleeps: 6-10

NORTH POINT FLOORPLANS



NORTH POINT | 301RETS

Ext. Length: 38' 2" Ext. Height: 159"

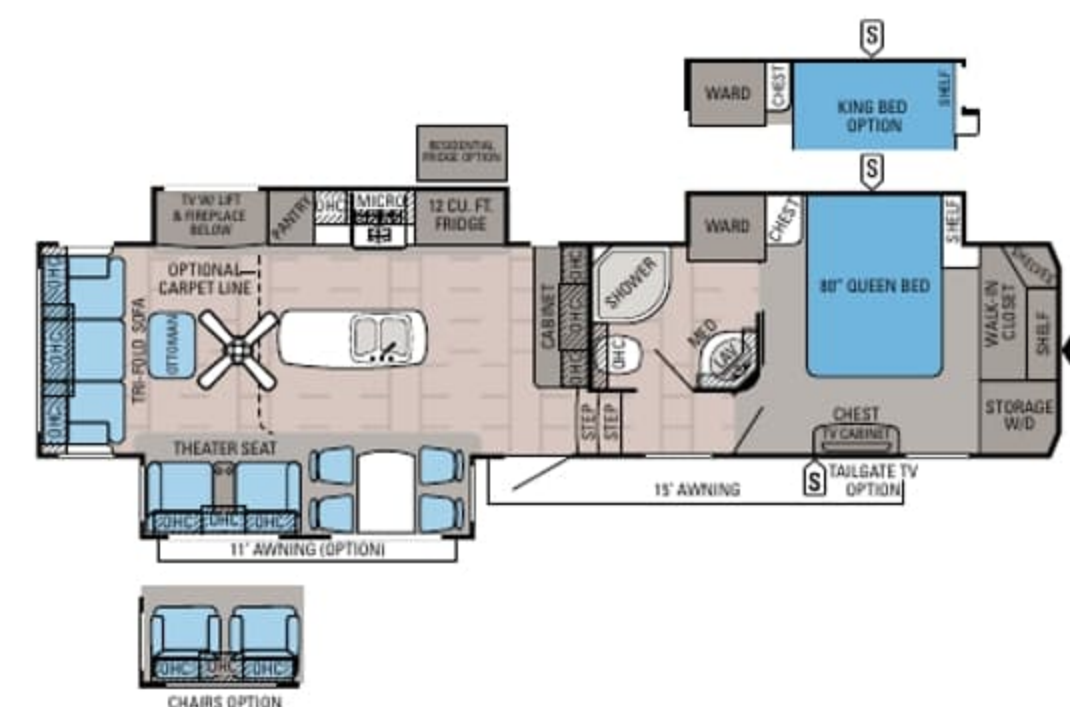
Unloaded Weight (lbs.): 11,650 Sleeps: 3-4



NORTH POINT | 311RKTS

Ext. Length: 38' 4" Ext. Height: 159"

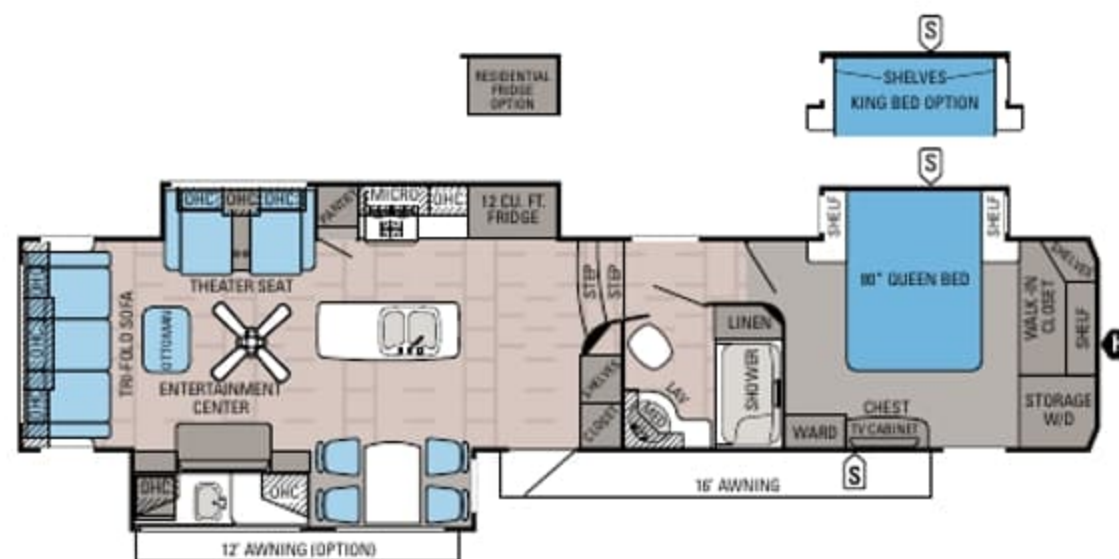
Unloaded Weight (lbs.): 12,085 Sleeps: 3-4



NORTH POINT | 341RLTS

Ext. Length: 39' 11" Ext. Height: 159"

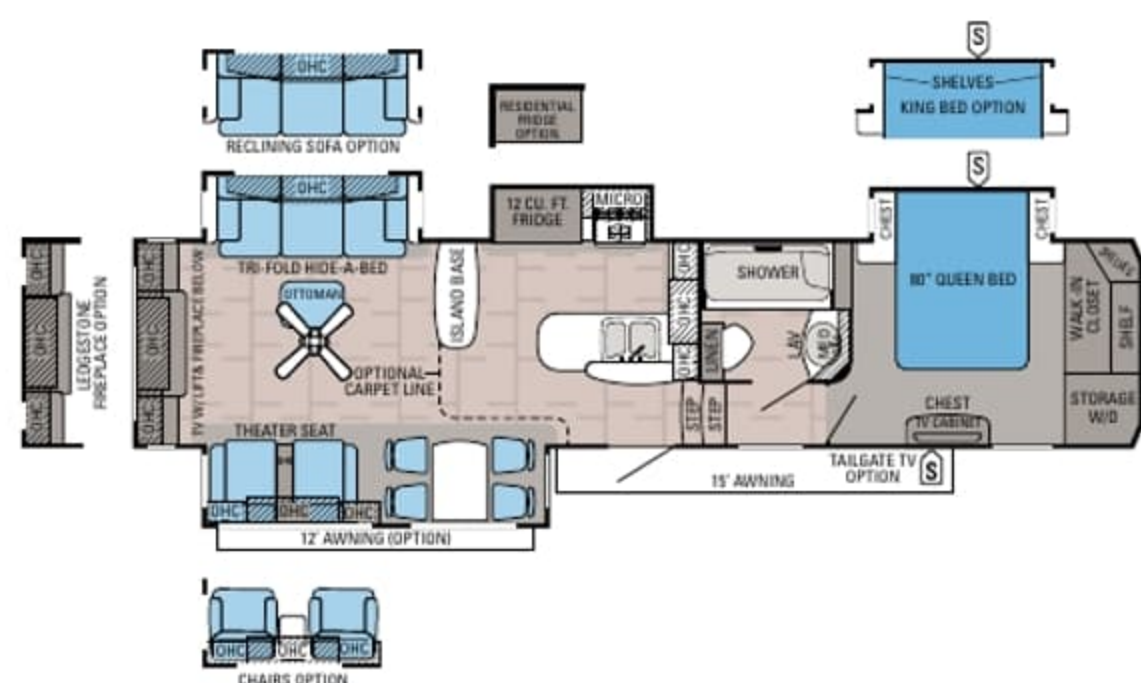
Unloaded Weight (lbs.): 12,125 Sleeps: 3-4



NORTH POINT | 351RSTS

Ext. Length: 40' 3" Ext. Height: 159"

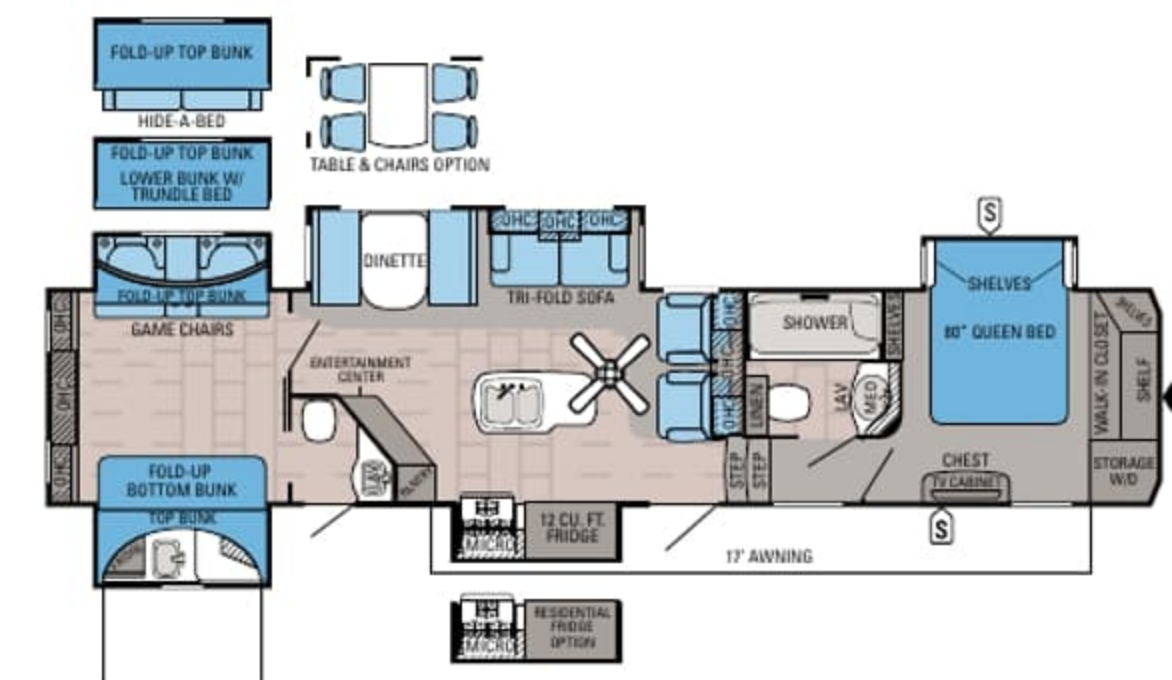
Unloaded Weight (lbs.): 12,445 Sleeps: 2-3



NORTH POINT | 361REQS

Ext. Length: 40' 7" Ext. Height: 159"

Unloaded Weight (lbs.): 12,080 Sleeps: 3-4



NORTH POINT | 375BHFS

Ext. Length: 43' 3" Ext. Height: 160"

Unloaded Weight (lbs.): 13,570 Sleeps: 6-10



NORTH POINT | 377RLBH

Ext. Length: 42' 7" Ext. Height: 158" Unloaded Weight (lbs.): 13,075 Sleeps: 6-10



NORTH POINT | 383FLFS

Ext. Length: 43' 7" Ext. Height: 160" Unloaded Weight (lbs.): 12,840 Sleeps: 2-4

INTERIOR DÉCOR

COTTONWOOD



HICKORY



MAHOGANY



WILLOW



NORTH POINT SPECIFICATIONS

MODELS	DIMENSIONS						WEIGHTS (LBS.)				TANKS (GALS.)		
FLOORPLAN	TOTAL EXTERIOR LENGTH	EXTERIOR TRAVEL LENGTH*	EXTERIOR WIDTH	EXTERIOR HEIGHT (WITH A/C)	EXTERIOR HEIGHT (WITH OPTIONAL BEDROOM A/C)	INTERIOR HEIGHT (BEDROOM)	UNLOADED VEHICLE WEIGHT	DRY HITCH WEIGHT	GROSS VEHICLE WEIGHT RATING	CARGO CARRYING CAPACITY	FRESH WATER CAPACITY (INCLUDES WATER HEATER)	GREY WASTE WATER CAPACITY	BLACK WASTE WATER CAPACITY
301RETS	38' 2"	36' 8"	96"	159"	160"	83"	11,650	2,455	14,900	3,250	85	87	50
311RKTS	38' 4"	36' 11"	96"	159"	159"	83"	12,085	2,125	14,995	2,910	85	95	50
341RLTS	39' 11"	38' 5"	96"	159"	159"	82"	12,125	2,460	14,995	2,870	85	87	50
351RSTS	40' 3"	40' 9"	96"	159"	159"	82"	12,445	2,595	15,500	3,055	85	95	50
361REQS	40' 7"	39' 1"	96"	159"	160"	82"	12,080	2,660	14,995	2,915	85	85	50
375BHFS	43' 3"	41' 10"	96"	160"	160"	82"	13,570	2,640	15,975	2,405	85	93	94
377RLBH	42' 7"	41' 1"	96"	158"	160"	82"	13,075	2,915	15,975	2,900	85	85	50
383FLFS	43' 7"	42' 1"	96"	160"	160"	82"	12,840	2,735	15,975	3,135	85	70	44

*Distance from the pin box to the bumper; total exterior length may be longer.

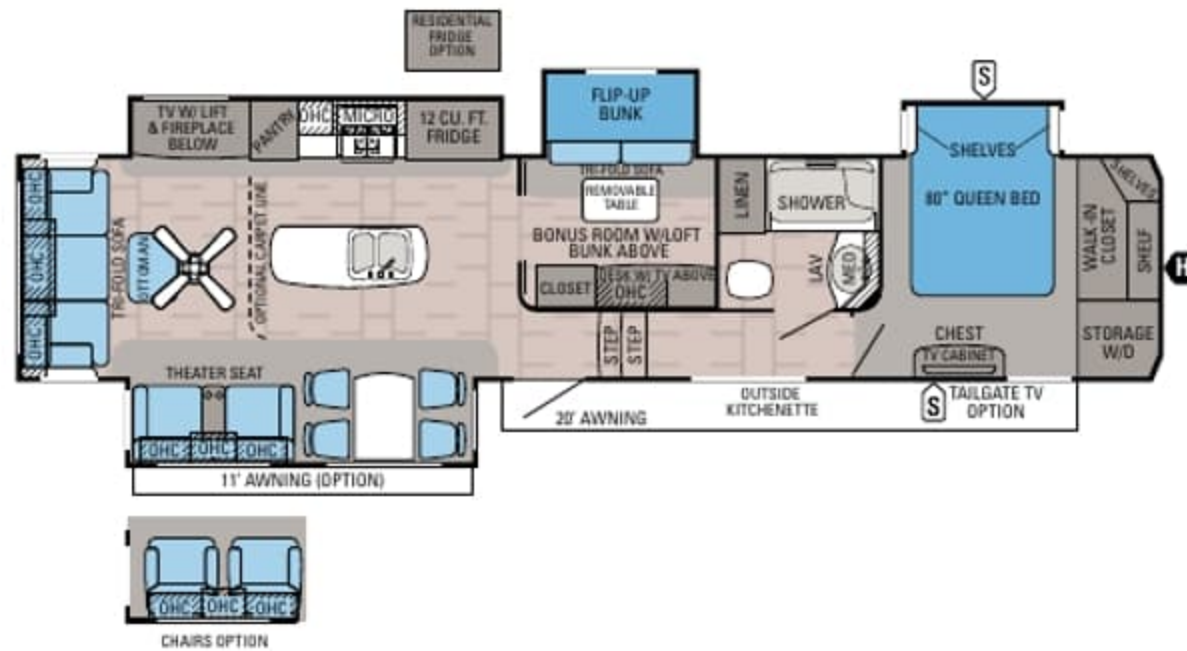
It is important for your safety and enjoyment that your tow vehicle be adequately sized and equipped to tow and handle the GVWR of the RV you select. Review weights and rating of your tow vehicle and consult a competent advisor for questions or advice. Whether you are new to RVing or a veteran, get a feel for the performance of your tow vehicle before heading out on the roadways. When you tow an RV, you must drive differently than when you drive a single vehicle. Practice hooking up, driving, backing up and braking in a safe environment or seek out professional instruction. Jayco affixes a weight label to each RV which lists weight information for that vehicle. See specifications chart above.

Unloaded Vehicle Weight (UVW): Sometimes referred to as "Dry Weight," UVW means the typical weight of this trailer as built at the factory. The UVW, as used in product literature and other promotional materials, does not include cargo, fresh water, propane, options or dealer-installed accessories.

Gross Vehicle Weight Rating (GVWR): GVWR means the maximum permissible weight of the trailer, including the UVW plus passengers, personal items, all cargo, fluids, options, and dealer-installed accessories. The GVWR is equal to or greater than the sum of the UVW and the CCC.

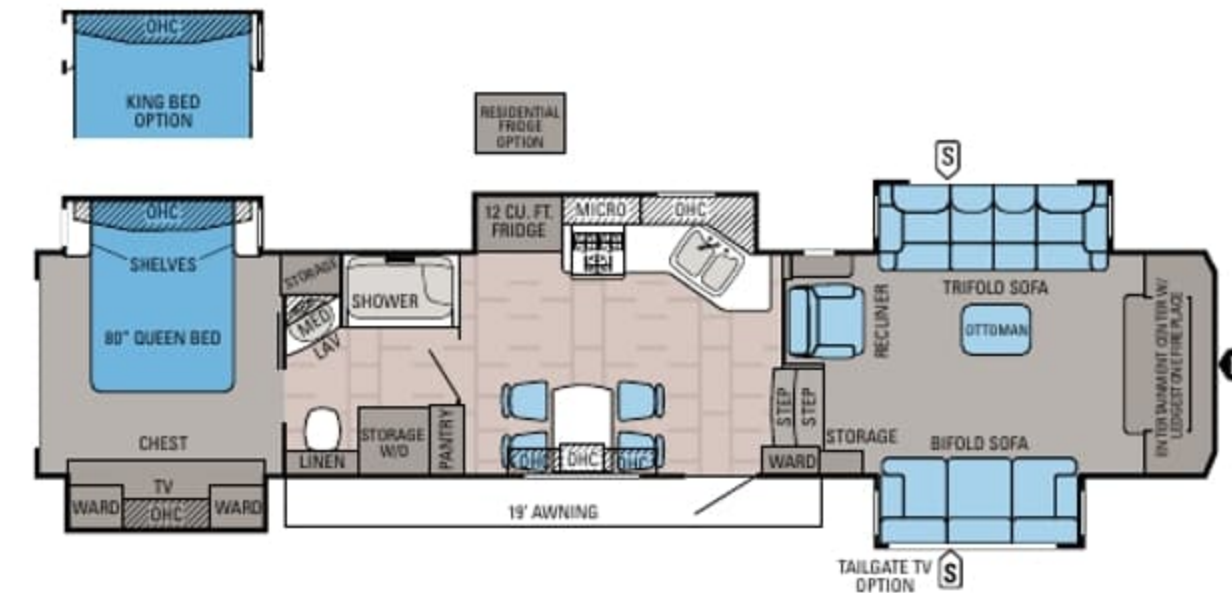
Cargo Carrying Capacity (CCC): CCC means the maximum weight of all passengers, personal items, food, fresh water, propane, tools, other cargo and dealer-installed accessories that can be carried by the trailer. CCC is equal to or less than GVWR minus UVW. The addition of options will decrease the CCC.

Hitch Weight (HW): The hitch weight, as used in product literature and other promotional materials, does not include cargo, fresh water, propane gas, options or dealer-installed accessories. The addition of these types of items will either add to or subtract from the stated hitch weight.



NORTH POINT | 377RLBH

Ext. Length: 42' 7" Ext. Height: 158" Unloaded Weight (lbs.): 13,075 Sleeps: 6-10



NORTH POINT | 383FLFS

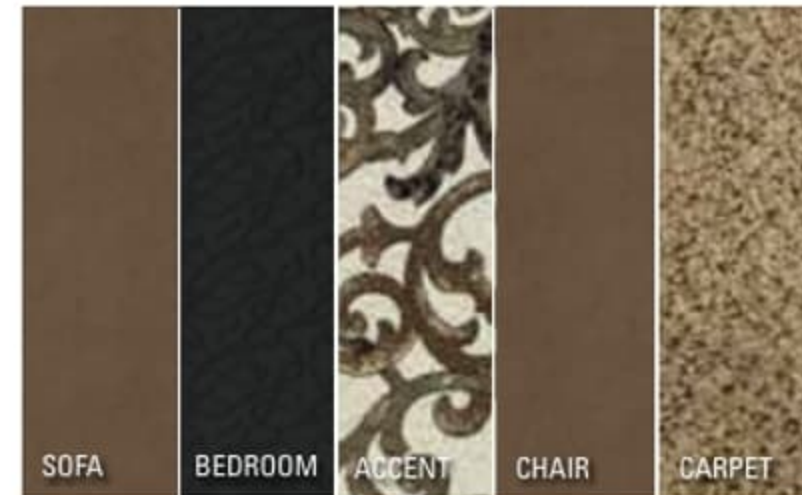
Ext. Length: 43' 7" Ext. Height: 160" Unloaded Weight (lbs.): 12,840 Sleeps: 2-4

INTERIOR DÉCOR

COTTONWOOD



HICKORY



MAHOGANY



WILLOW



NORTH POINT SPECIFICATIONS

MODELS	DIMENSIONS						WEIGHTS (LBS.)				TANKS (GALS.)		
FLOORPLAN	TOTAL EXTERIOR LENGTH	EXTERIOR TRAVEL LENGTH*	EXTERIOR WIDTH	EXTERIOR HEIGHT (WITH A/C)	EXTERIOR HEIGHT (WITH OPTIONAL BEDROOM A/C)	INTERIOR HEIGHT (BEDROOM)	UNLOADED VEHICLE WEIGHT	DRY HITCH WEIGHT	GROSS VEHICLE WEIGHT RATING	CARGO CARRYING CAPACITY	FRESH WATER CAPACITY (INCLUDES WATER HEATER)	GREY WASTE WATER CAPACITY	BLACK WASTE WATER CAPACITY
301RETS	38' 2"	36' 8"	96"	159"	160"	83"	11,650	2,455	14,900	3,250	85	87	50
311RKTS	38' 4"	36' 11"	96"	159"	159"	83"	12,085	2,125	14,995	2,910	85	95	50
341RLTS	39' 11"	38' 5"	96"	159"	159"	82"	12,125	2,460	14,995	2,870	85	87	50
351RSTS	40' 3"	40' 9"	96"	159"	159"	82"	12,445	2,595	15,500	3,055	85	95	50
361REQS	40' 7"	39' 1"	96"	159"	160"	82"	12,080	2,660	14,995	2,915	85	85	50
375BHFS	43' 3"	41' 10"	96"	160"	160"	82"	13,570	2,640	15,975	2,405	85	93	94
377RLBH	42' 7"	41' 1"	96"	158"	160"	82"	13,075	2,915	15,975	2,900	85	85	50
383FLFS	43' 7"	42' 1"	96"	160"	160"	82"	12,840	2,735	15,975	3,135	85	70	44

*Distance from the pin box to the bumper; total exterior length may be longer.

It is important for your safety and enjoyment that your tow vehicle be adequately sized and equipped to tow and handle the GVWR of the RV you select. Review weights and rating of your tow vehicle and consult a competent advisor for questions or advice. Whether you are new to RVing or a veteran, get a feel for the performance of your tow vehicle before heading out on the roadways. When you tow an RV, you must drive differently than when you drive a single vehicle. Practice hooking up, driving, backing up and braking in a safe environment or seek out professional instruction. Jayco affixes a weight label to each RV which lists weight information for that vehicle. See specifications chart above.

Unloaded Vehicle Weight (UVW): Sometimes referred to as "Dry Weight," UVW means the typical weight of this trailer as built at the factory. The UVW, as used in product literature and other promotional materials, does not include cargo, fresh water, propane, options or dealer-installed accessories.

Gross Vehicle Weight Rating (GVWR): GVWR means the maximum permissible weight of the trailer, including the UVW plus passengers, personal items, all cargo, fluids, options, and dealer-installed accessories. The GVWR is equal to or greater than the sum of the UVW and the CCC.

Cargo Carrying Capacity (CCC): CCC means the maximum weight of all passengers, personal items, food, fresh water, propane, tools, other cargo and dealer-installed accessories that can be carried by the trailer. CCC is equal to or less than GVWR minus UVW. The addition of options will decrease the CCC.

Hitch Weight (HW): The hitch weight, as used in product literature and other promotional materials, does not include cargo, fresh water, propane gas, options or dealer-installed accessories. The addition of these types of items will either add to or subtract from the stated hitch weight.

LUXURY FIFTH WHEEL PACKAGE

6-point electric auto-leveling system
 Backup camera/monitoring system prep
 Carefree power awning with Flex Guard fabric shield and LED light strip
 Indoor/outdoor central vacuum system with kick pan
 Franklin American-made residential furniture
 Magnum Frame System
 Magnum Truss XL6 roof system
 Helix Cooling System with Whisper Quiet technology
 Quad-tread aluminum entrance steps
 Bluetooth/HDMI high-output entertainment system
 Cargo accessory receiver
 Electric thermostatically controlled fireplace
 Keyless main entrance door
 LED exterior lighting
 MOR/ryde pin box
 Oversized battery compartment
 Painted gelcoat fiberglass front cap
 Power kitchen vent with wall controls
 Sidewall and roof-mount solar prep
 Whole coach water purification system

NORTH POINT ADVANTAGE PACKAGE

Big-screen LED HDTVs in living areas
 32-inch LED HDTV in bedroom with integrated DVD player
 High-gloss, hand-rubbed hardwood cabinet doors
 High-gloss premium fiberglass exterior
 MOR/ryde CRE3000 rubberized suspension system
 Single blackout roller shades throughout
 Remote control system for levelers, awnings, sliderooms and exterior lights
 80-inch Jayco Luxury Sleep System with memory-foam mattress
 Fiberglass shower with glass enclosure

CUSTOMER VALUE PACKAGE

15,000-BTU central A/C
 20-gallon refresh rate gas/electric auto-ignition Atwood water heater
 Arched interior ceiling
 Bath skylight
 Bathroom power vent
 Bedspread
 Under-bed floor safe
 Oversized folding exterior grab handle
 Frameless G20 dark-tinted windows
 LED interior lighting
 Solid-surface kitchen countertops
 Security lights
 Slam-latch™ baggage doors
 Sofa and bed pillows

STANDARD EXTERIOR EQUIPMENT

TuffShell™ vacuum-bonded, laminated walls
 Aerodynamic front cap with LED lighting
 Seamless roof covering
 Climate Shield™:
 • Enclosed, insulated, heated underbelly
 • High-BTU-output furnace
 • Astro-Foil™ in roof and floors
 10-inch I-class cambered structural steel I-beams
 Completely enclosed and protected slideout mechanisms
 30-inch x 72-inch entry door with oversized window
 Front awning arm convenience outlet
 16-inch radial tires
 7,000-pound axles
 Wide-stance front landing gear
 Exterior kitchen with 32-inch LED TV, sink, refrigerator and cooktop range (311RKTS, 351RSTS, 375BHFS)
 Exterior kitchenette with refrigerator and cooktop range (377RLBH)
 Enclosed, protected basement drop-frame
 Stor-Galore™ pass-through basement storage with Slam-latch and strut assist
 Cable TV and outlet in basement
 Exterior marine-grade speakers (2)
 Convenient dual LP compartment (60 pounds total) on off-door side

Door-side compartment prepped for third 30-pound LP bottle
 Heated, enclosed Uni-Dock™ utility center
 50-amp power service with detachable cord
 35,000-BTU furnace (minimum)
 75-gallon fresh water tank
 70-gallon grey tank capacity (minimum)
 44-gallon black tank capacity (minimum)
 Cable/satellite prep
 Digital TV antenna
 Under-mounted spare tire
 Outside grill prep
 Roof ladder
 Hitch light
 Upperdeck slideout convenience light
 EZ-Stow™ – cargo area sliding tray
 EZ-Cord™ – cargo area extension cord access port

STANDARD INTERIOR EQUIPMENT

Raised-panel cabinetry with screwed construction and hidden hinges
 Steel ball-bearing drawer guides, 75-pound capacity, full extension
 Hardwood slideout fascias
 Large, split, under-mount stainless steel sink with sink covers
 Pull-out kitchen faucet with sprayer
 Water heater bypass
 12-cubic-foot Norcold® gas/electric refrigerator
 Recessed, flush-mount, oversized, 21-inch oven with 3-burner cooktop and range cover
 Stainless steel, 30-inch, residential, over-the-range microwave
 USB charging centers in living areas, kitchen and bedrooms
 Residential-grade wood plank vinyl flooring
 Shaw® R2X stain-resistant residential carpeting
 Free-standing table and 4 chairs (optional 375BHFS)
 90-amp power center with Charge Wizard®
 Backlit command center for switches
 Floor-level convenience light switch for safe entry
 Ceiling fan (n/a on 383FLFS)
 Ceiling mantle
 Closeable and directional A/C vents
 Prep for second A/C – prewired and tied into ducting
 Tri-fold hide-a-bed sofas with ottoman (bi-fold in 375BHFS)
 Reclining theater seat sofas (n/a on 375BHFS)

2 recliners (375BHFS)
 6-foot-2-inch-tall living area slideouts
 One-piece, fiberglass shower with glass doors (select models)
 Porcelain bath stool with foot flush
 Robe hooks in bath
 Full-trunk, under-bed storage
 Walk-in-style front closet with dual hanging rods
 Washer/dryer prep (accommodates stackable unit)
 Oversized bedroom dresser storage
 Bedroom slide fascia built-in night stand storage system (n/a on 383FLFS)

OPTIONS

Customer Value Package with heat pump
 King bed (n/a on 375BHFS, 377RLBH)
 Bunk beds with trundle bed in off-door bunk room slide (375BHFS)
 Bunk beds with hide-a-bed in off-door bunk room slide (375BHFS; standard on 377RLBH)
 2 recliner rockers in lieu of theater seating (301RETS, 341RLTS, 361REQS, 377RLBH)
 Ledge stone fireplace surround (301RETS, 361REQS; standard on 351RSTS, 383FLFS)
 Stainless steel convection microwave with oven
 Carpet in living area (n/a on 383FLFS, 375BHFS)
 Free-standing table and 4 chairs (375BHFS)
 Reclining main sofa (301RETS, 341RLTS, 351RSTS, 361REQS, 377RLBH)
 23-cubic-foot residential refrigerator with 1,000-watt inverter
 Wireless backup camera/monitoring system
 39-inch tailgate TV on sliding mounting bracket (select models)
 Second 15,000-BTU A/C (low-profile) in bedroom, tied into dual-duct system
 Third 15,000-BTU A/C (low-profile) in front living room (383FLFS)
 Manual 50-amp cord reel
 Generator prep
 5,500-watt gas generator
 Thermal pane tinted safety glass windows
 Second power awning (n/a on 383FLFS, 375BHFS)
 3 slideout awnings (301RETS, 351RSTS, 311RKTS, 341RLTS)
 4 slideout awnings (361REQS, 377RLBH)
 5 slideout awnings (375BHFS, 383FLFS)
 Weber® Q® Electric Grill and portable stand
 Outside gas grill

--- See pages 4-5 for details on the Luxury Fifth Wheel and North Point Advantage packages ---

STANDARDS AND OPTIONS

LUXURY FIFTH WHEEL PACKAGE

6-point electric auto-leveling system
Backup camera/monitoring system prep
Carefree power awning with Flex Guard fabric shield and LED light strip
Indoor/outdoor central vacuum system with kick pan
Franklin American-made residential furniture
Magnum Frame System
Magnum Truss XL6 roof system
Helix Cooling System with Whisper Quiet technology
Quad-tread aluminum entrance steps
Bluetooth/HDMI high-output entertainment system
Cargo accessory receiver
Electric thermostatically controlled fireplace
Keyless main entrance door
LED exterior lighting
MOR/ryde pin box
Oversized battery compartment
Painted gelcoat fiberglass front cap
Power kitchen vent with wall controls
Sidewall and roof-mount solar prep
Whole coach water purification system

NORTH POINT ADVANTAGE PACKAGE

Big-screen LED HDTVs in living areas
32-inch LED HDTV in bedroom with integrated DVD player
High-gloss, hand-rubbed hardwood cabinet doors
High-gloss premium fiberglass exterior
MOR/ryde CRE3000 rubberized suspension system
Single blackout roller shades throughout
Remote control system for levelers, awnings, sliderooms and exterior lights
80-inch Jayco Luxury Sleep System with memory-foam mattress
Fiberglass shower with glass enclosure

CUSTOMER VALUE PACKAGE

15,000-BTU central A/C
20-gallon refresh rate gas/electric auto-ignition Atwood water heater
Arched interior ceiling
Bath skylight
Bathroom power vent
Bedsread
Under-bed floor safe
Oversized folding exterior grab handle
Frameless G20 dark-tinted windows
LED interior lighting
Solid-surface kitchen countertops
Security lights
Slam-latch™ baggage doors
Sofa and bed pillows

STANDARD EXTERIOR EQUIPMENT

TuffShell™ vacuum-bonded, laminated walls
Aerodynamic front cap with LED lighting
Seamless roof covering
Climate Shield™:
• Enclosed, insulated, heated underbelly
• High-BTU-output furnace
• Astro-Foil™ in roof and floors
10-inch I-class cambered structural steel I-beams
Completely enclosed and protected slideout mechanisms
30-inch x 72-inch entry door with oversized window
Front awning arm convenience outlet
16-inch radial tires
7,000-pound axles
Wide-stance front landing gear
Exterior kitchen with 32-inch LED TV, sink, refrigerator and cooktop range (311RKTS, 351RSTS, 375BHFS)
Exterior kitchenette with refrigerator and cooktop range (377RLBH)
Enclosed, protected basement drop-frame
Stor-Galore™ pass-through basement storage with Slam-latch and strut assist
Cable TV and outlet in basement
Exterior marine-grade speakers (2)
Convenient dual LP compartment (60 pounds total) on off-door side

Door-side compartment prepped for third 30-pound LP bottle
Heated, enclosed Uni-Dock™ utility center
50-amp power service with detachable cord
35,000-BTU furnace (minimum)
75-gallon fresh water tank
70-gallon grey tank capacity (minimum)
44-gallon black tank capacity (minimum)
Cable/satellite prep
Digital TV antenna
Under-mounted spare tire
Outside grill prep
Roof ladder
Hitch light
Upperdeck slideout convenience light
EZ-Stow™ – cargo area sliding tray
EZ-Cord™ – cargo area extension cord access port

STANDARD INTERIOR EQUIPMENT

Raised-panel cabinetry with screwed construction and hidden hinges
Steel ball-bearing drawer guides, 75-pound capacity, full extension
Hardwood slideout fascias
Large, split, under-mount stainless steel sink with sink covers
Pull-out kitchen faucet with sprayer
Water heater bypass
12-cubic-foot Norcold® gas/electric refrigerator
Recessed, flush-mount, oversized, 21-inch oven with 3-burner cooktop and range cover
Stainless steel, 30-inch, residential, over-the-range microwave
USB charging centers in living areas, kitchen and bedrooms
Residential-grade wood plank vinyl flooring
Shaw® R2X stain-resistant residential carpeting
Free-standing table and 4 chairs (optional 375BHFS)
90-amp power center with Charge Wizard®
Backlit command center for switches
Floor-level convenience light switch for safe entry
Ceiling fan (n/a on 383FLFS)
Ceiling mantle
Closeable and directional A/C vents
Prep for second A/C – prewired and tied into ducting
Tri-fold hide-a-bed sofas with ottoman (bi-fold in 375BHFS)
Reclining theater seat sofas (n/a on 375BHFS)

2 recliners (375BHFS)
6-foot-2-inch-tall living area slideouts
One-piece, fiberglass shower with glass doors (select models)
Porcelain bath stool with foot flush
Robe hooks in bath
Full-trunk, under-bed storage
Walk-in-style front closet with dual hanging rods
Washer/dryer prep (accommodates stackable unit)
Oversized bedroom dresser storage
Bedroom slide fascia built-in night stand storage system (n/a on 383FLFS)

OPTIONS

Customer Value Package with heat pump
King bed (n/a on 375BHFS, 377RLBH)
Bunk beds with trundle bed in off-door bunk room slide (375BHFS)
Bunk beds with hide-a-bed in off-door bunk room slide (375BHFS; standard on 377RLBH)
2 recliner rockers in lieu of theater seating (301RETS, 341RLTS, 361REQS, 377RLBH)
Ledgestone fireplace surround (301RETS, 361REQS; standard on 351RSTS, 383FLFS)
Stainless steel convection microwave with oven
Carpet in living area (n/a on 383FLFS, 375BHFS)
Free-standing table and 4 chairs (375BHFS)
Reclining main sofa (301RETS, 341RLTS, 351RSTS, 361REQS, 377RLBH)
23-cubic-foot residential refrigerator with 1,000-watt inverter
Wireless backup camera/monitoring system
39-inch tailgate TV on sliding mounting bracket (select models)
Second 15,000-BTU A/C (low-profile) in bedroom, tied into dual-duct system
Third 15,000-BTU A/C (low-profile) in front living room (383FLFS)
Manual 50-amp cord reel
Generator prep
5,500-watt gas generator
Thermal pane tinted safety glass windows
Second power awning (n/a on 383FLFS, 375BHFS)
3 slideout awnings (301RETS, 351RSTS, 311RKTS, 341RLTS)
4 slideout awnings (361REQS, 377RLBH)
5 slideout awnings (375BHFS, 383FLFS)
Weber® Q® Electric Grill and portable stand
Outside gas grill

- - - See pages 4-5 for details on the Luxury Fifth Wheel and North Point Advantage packages - - -

LET'S JAYCO—AND LEAVE OUR WORRIES BEHIND.



THE JAYCO DIFFERENCE

When you go with Jayco, you get one of the industry's strongest frames and rock-solid construction.

- 1. Vacuum-bonded walls and high-gloss, premium fiberglass exteriors** for better protection from the elements
- 2. Magnum Truss XL6 Roof System** withstands 4,500 pounds—50 percent more than other roofs
- 3. Welded aluminum frame** for a durable, lightweight structure
- 4. Double layer of fiberglass insulation** behind the front cap, plus Flexfoil® and fiberglass insulation in the floor to provide extra warmth where it's needed most—in the bedroom

5. Painted gelcoat fiberglass front cap withstands the rigors of the road with infused paint and gel coating, plus ¼-inch plywood bracing for additional support—not typically found on competing fifth wheels

6. MOR/ryde CRE3000 rubberized suspension system provides smoother towing and better protection from damaging road shock

7. Helix Cooling System with Whisper Quiet technology

8. 6-point electric leveling system

9. Carefree power awning with Flex Guard fabric shield

10. Quad-tread aluminum entrance steps

We know that your family fun rides on our commitment to quality. So we go the extra mile to make products that last—and stand behind them longer than anyone in the business.



JAYCO'S ROOF **VS** OTHER ROOFS



4,500 POUNDS ON A JAYCO ROOF VS. OTHER ROOFS

THE MAGNUM TRUSS XL6 ROOF SYSTEM **50 percent stronger**

- 11. Keyless main entrance door**
- 12. Cargo accessory receiver**
- 13. Sidewall and roof-mount solar prep**
- 14. Magnum Frame System**
- 15. MOR/ryde pin box**



CLIMATE SHIELD

Extend your camping season with the Jayco Climate Shield. It protects against extreme heat and extreme freezing—even in temperatures as high as 100 degrees or as low as zero degrees (Fahrenheit).*

LIVING ROOM



KITCHEN



BATHROOM



HOLDING TANK



BEDROOM



*North Point was tested in zero degrees F and 100 degrees F weather over an extended period of time in a controlled environment and all functions of the coach were fully operational. Testing was done in a completely controlled environment; therefore, temperatures during testing may not represent actual temperatures in nature, and cannot account for elements such as wind or moisture. In actual use, unit may not perform as well. Supplier of cooling components does not guarantee anything better than 20 degrees difference from ambient temperature. In addition, outside components are subject to freezing and require steps to properly insulate. Jayco's warranty does not cover damage caused by freezing. To learn more about Climate Shield and testing done by Jayco, visit www.jayco.com.

LET'S JAYCO—AND LEAVE OUR WORRIES BEHIND.



THE JAYCO DIFFERENCE

When you go with Jayco, you get one of the industry's strongest frames and rock-solid construction.

- 1. Vacuum-bonded walls and high-gloss, premium fiberglass exteriors** for better protection from the elements
- 2. Magnum Truss XL6 Roof System** withstands 4,500 pounds—50 percent more than other roofs
- 3. Welded aluminum frame** for a durable, lightweight structure
- 4. Double layer of fiberglass insulation** behind the front cap, plus Flexfoil® and fiberglass insulation in the floor to provide extra warmth where it's needed most—in the bedroom

5. Painted gelcoat fiberglass front cap withstands the rigors of the road with infused paint and gel coating, plus ¼-inch plywood bracing for additional support—not typically found on competing fifth wheels

6. MOR/ryde CRE3000 rubberized suspension system provides smoother towing and better protection from damaging road shock

7. Helix Cooling System with Whisper Quiet technology

8. 6-point electric leveling system

9. Carefree power awning with Flex Guard fabric shield

10. Quad-tread aluminum entrance steps

We know that your family fun rides on our commitment to quality. So we go the extra mile to make products that last—and stand behind them longer than anyone in the business.



JAYCO'S ROOF **VS** OTHER ROOFS



4,500 POUNDS ON A JAYCO ROOF VS. OTHER ROOFS

THE MAGNUM TRUSS XL6 ROOF SYSTEM **50 percent stronger**

11. Keyless main entrance door

12. Cargo accessory receiver

13. Sidewall and roof-mount solar prep

14. Magnum Frame System

15. MOR/ryde pin box



CLIMATE SHIELD

Extend your camping season with the Jayco Climate Shield. It protects against extreme heat and extreme freezing—even in temperatures as high as 100 degrees or as low as zero degrees (Fahrenheit).*

LIVING ROOM



KITCHEN



BATHROOM



HOLDING TANK



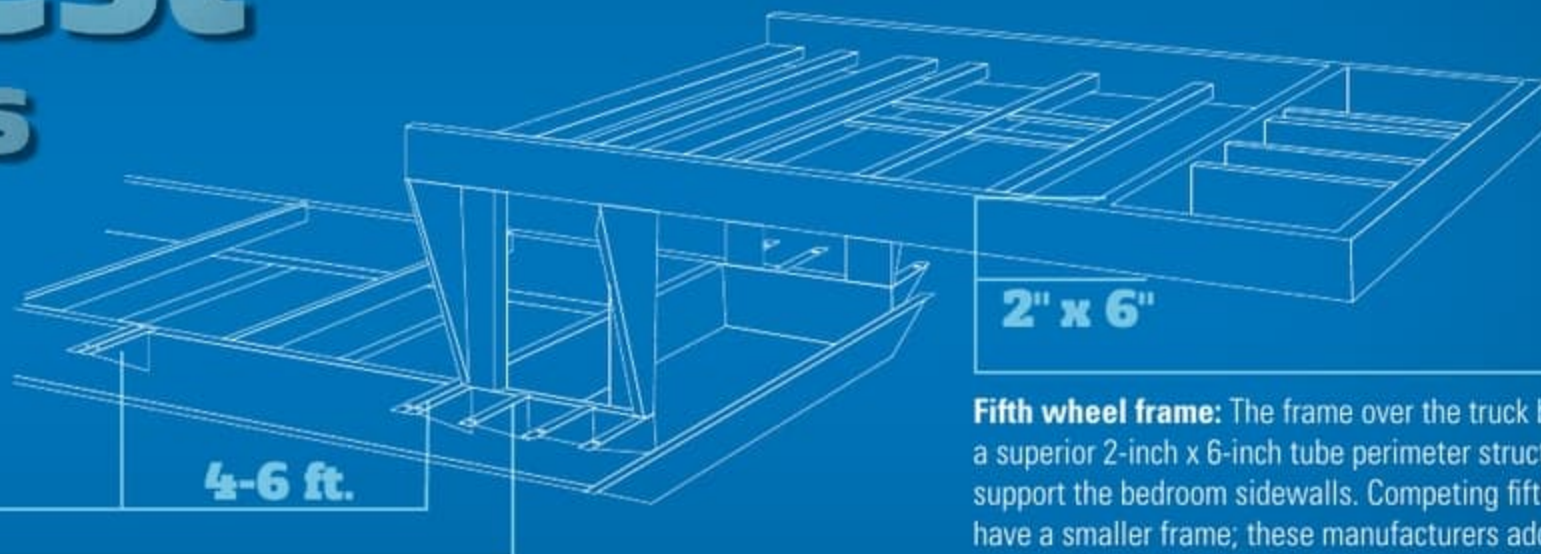
BEDROOM



*North Point was tested in zero degrees F and 100 degrees F weather over an extended period of time in a controlled environment and all functions of the coach were fully operational. Testing was done in a completely controlled environment; therefore, temperatures during testing may not represent actual temperatures in nature, and cannot account for elements such as wind or moisture. In actual use, unit may not perform as well. Supplier of cooling components does not guarantee anything better than 20 degrees difference from ambient temperature. In addition, outside components are subject to freezing and require steps to properly insulate. Jayco's warranty does not cover damage caused by freezing. To learn more about Climate Shield and testing done by Jayco, visit www.jayco.com.

WE START WITH ONE OF THE INDUSTRY'S **strongest** foundations

Full-width outriggers: We build on full-width outriggers that are spaced 4-6 feet apart (vs. 8 feet) to better support the weight of the wall.



I-class cambered structural steel I-beams: Jayco uses a unique molded, one-piece design to prevent unit from twisting; competing three-piece I-beams can warp over time at the welded seams.

Fifth wheel frame: The frame over the truck bed is built on a superior 2-inch x 6-inch tube perimeter structure to better support the bedroom sidewalls. Competing fifth wheels have a smaller frame; these manufacturers add a sidewall support seam to compensate for expansion joints.

Learn more at StrongFoundation.Jayco.com



Generations of family fun.


Meet your Jayco Dealer



We work hard—so you can play hard. From finding the perfect Jayco for your family to providing flexible financing options and full-service support, we're here to help.

Follow Jayco



Jayco, Inc., P.O. Box 460, Middlebury, IN 46540, www.jayco.com  See dealer for further information and prices. All information in this brochure is the latest available at the time of publication approval. Jayco reserves the right to make changes and to discontinue models without notice or obligation. Photos in this brochure may show optional equipment and props for photography purposes. RVs built for sale in Canada may differ to conform to Canadian codes. ©2015 Jayco, Inc. 0915-50K Printed in U.S.A.

2

YEAR
WARRANTY

FREE

ROADSIDE
ASSISTANCE

Travel with confidence, with our industry-leading, bumper-to-front limited warranty and a year's access to Coach-Net™—the country's largest RV emergency road service.

For a copy of our 2-year limited warranty with full terms and conditions, please contact your local Jayco dealer.

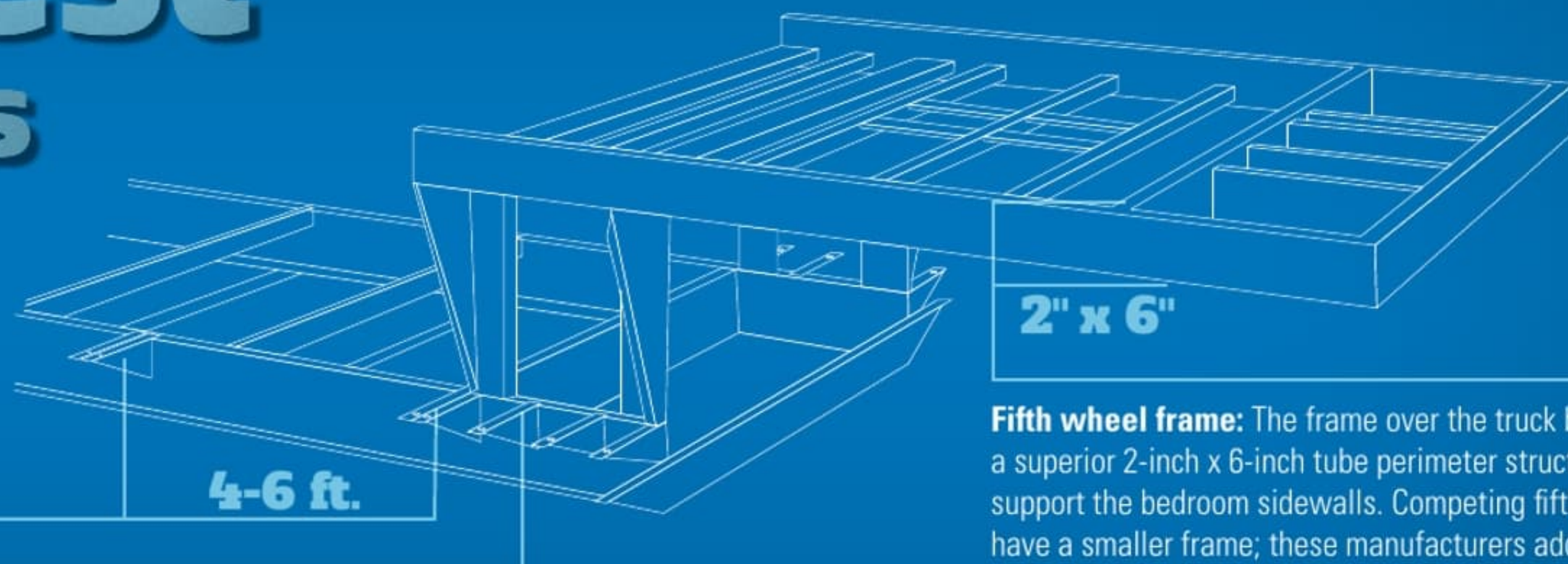
eco advantage™

Jayco's long-term commitment to generations of family fun

After four years of increased efforts to eliminate waste, conserve energy and increase recycling, we've come a long way in building RVs that are not only better for your family—but also better for the planet. **Learn more at Jayco.com/EcoAdvantage**

WE START WITH ONE OF THE INDUSTRY'S **strongest** foundations

Full-width outriggers: We build on full-width outriggers that are spaced 4-6 feet apart (vs. 8 feet) to better support the weight of the wall.



I-class cambered structural steel I-beams: Jayco uses a unique molded, one-piece design to prevent unit from twisting; competing three-piece I-beams can warp over time at the welded seams.

Fifth wheel frame: The frame over the truck bed is built on a superior 2-inch x 6-inch tube perimeter structure to better support the bedroom sidewalls. Competing fifth wheels have a smaller frame; these manufacturers add a sidewall support seam to compensate for expansion joints.

Learn more at StrongFoundation.Jayco.com



Meet your Jayco Dealer



We work hard—so you can play hard. From finding the perfect Jayco for your family to providing flexible financing options and full-service support, we're here to help.

Follow Jayco



Jayco, Inc., P.O. Box 460, Middlebury, IN 46540, www.jayco.com See dealer for further information and prices. All information in this brochure is the latest available at the time of publication approval. Jayco reserves the right to make changes and to discontinue models without notice or obligation. Photos in this brochure may show optional equipment and props for photography purposes. RVs built for sale in Canada may differ to conform to Canadian codes. ©2015 Jayco, Inc. 0915-50K Printed in U.S.A.

2
YEAR
WARRANTY

FREE
ROADSIDE
ASSISTANCE

Travel with confidence, with our industry-leading, bumper-to-front limited warranty and a year's access to Coach-Net™—the country's largest RV emergency road service.

For a copy of our 2-year limited warranty with full terms and conditions, please contact your local Jayco dealer.

eco advantage™

Jayco's long-term commitment to generations of family fun

After four years of increased efforts to eliminate waste, conserve energy and increase recycling, we've come a long way in building RVs that are not only better for your family—but also better for the planet. **Learn more at Jayco.com/EcoAdvantage**