



PINNACLE™

2016

GET AWAY
#LETSJAYCO



2016 PINNACLE LUXURY FIFTH WHEEL



2
YEAR
WARRANTY



PINNACLE™

2016

GET AWAY
#LETSJAYCO

2016 PINNACLE LUXURY FIFTH WHEEL



2
YEAR
WARRANTY



#LETSJAYCO

When you travel with Jayco, fun is the only thing on the agenda. That's because we go the extra mile so you can live in the moment. From comfortable, amenity-packed floorplans to weather-shielding insulation and superior frame construction, you'll have everything you need to adventure every day and make yourself at home every night. Let's get away. Let's make it count. Let's Jayco—and make memories that last a lifetime.

GENERATIONS OF FAMILY FUN



#LETSJAYCO

When you travel with Jayco, fun is the only thing on the agenda. That's because we go the extra mile so you can live in the moment. From comfortable, amenity-packed floorplans to weather-shielding insulation and superior frame construction, you'll have everything you need to adventure every day and make yourself at home every night. Let's get away. Let's make it count. Let's Jayco—and make memories that last a lifetime.

GENERATIONS OF FAMILY FUN

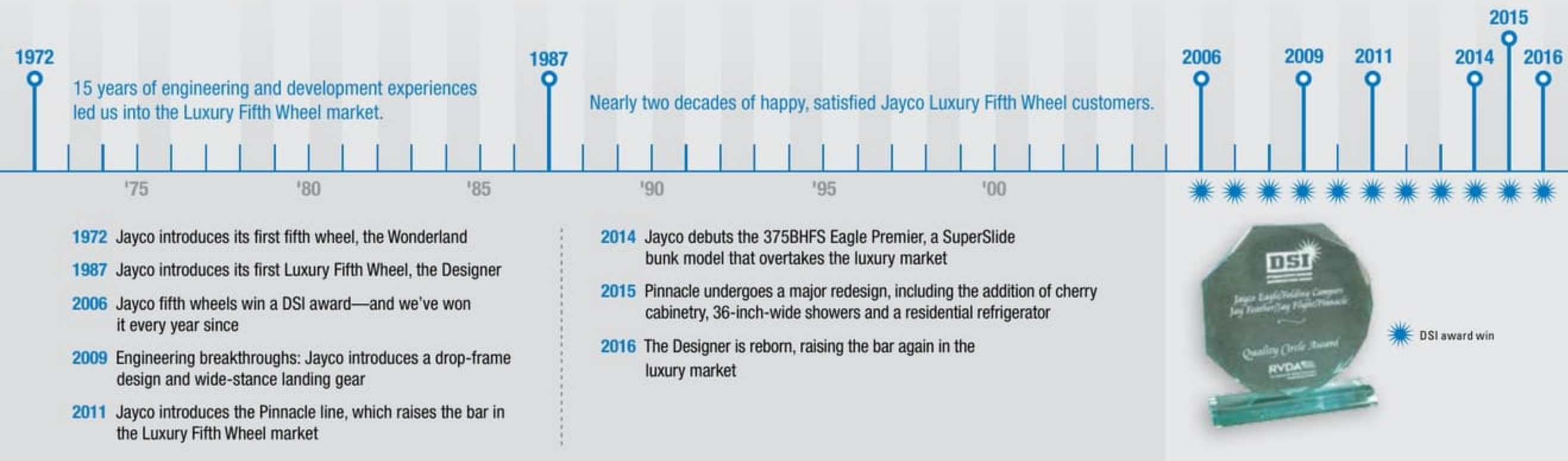
PINNACLE

LIVE THE LEGACY

When Jayco founder Lloyd Bontrager set out to build a better camping trailer nearly 50 years ago, he probably couldn't have imagined the lavish craftsmanship, awe-inspiring floorplans and stunning residential amenities we'd accomplish years later. Today, his legacy of excellence lives on—with Luxury Fifth Wheels that are as plush as they come.

MORE THAN 40 YEARS OF ENGINEERING, LISTENING, LEARNING AND EVOLVING

Jayco has been building fifth wheels for nearly a half-century—and Luxury Fifth Wheels for almost 30 years.



SHARE YOUR PHOTOS AND STORIES ON SOCIAL MEDIA WITH [#LETSJAYCO](https://www.instagram.com/letsjayco).



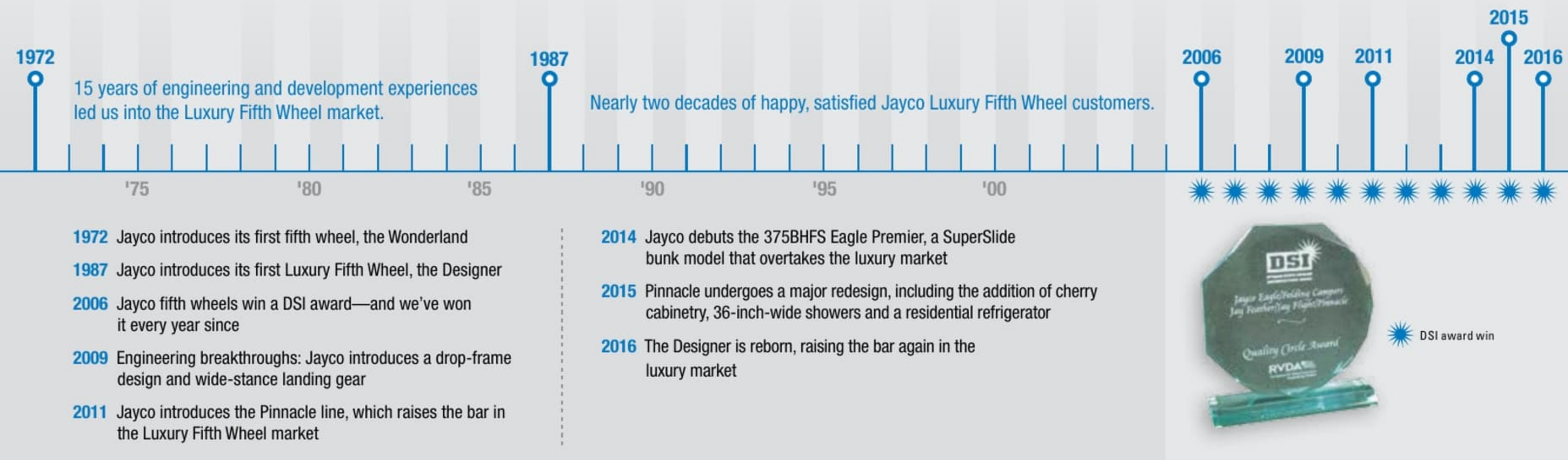
PINNACLE

LIVE THE LEGACY

When Jayco founder Lloyd Bontrager set out to build a better camping trailer nearly 50 years ago, he probably couldn't have imagined the lavish craftsmanship, awe-inspiring floorplans and stunning residential amenities we'd accomplish years later. Today, his legacy of excellence lives on—with Luxury Fifth Wheels that are as plush as they come.

MORE THAN 40 YEARS OF ENGINEERING, LISTENING, LEARNING AND EVOLVING

Jayco has been building fifth wheels for nearly a half-century—and Luxury Fifth Wheels for almost 30 years.



SHARE YOUR PHOTOS AND STORIES ON SOCIAL MEDIA WITH [#LETSJAYCO](https://www.jayco.com/letsjayco).



LUXURY FIFTH WHEEL PACKAGE



Indulge and Impress

Premium features come standard, thanks to our Luxury Fifth Wheel and Pinnacle Advantage packages. They're the apex of towable comfort—where opulence meets unbeatable value. Now that's an indulgence you can feel good about.

LUXURY FIFTH WHEEL PACKAGE:

- 6-point electric auto-leveling system (1)
- Backup camera prep; camera and monitor optional (2)
- Carefree® power awning with Flex Guard fabric shield (3)
- Indoor/outdoor central vacuum system with kick pan (4)
- Franklin™ American-made residential furniture (5)
- Magnum Frame System (6)
- Magnum Truss™ XL6 roof system (7)
- Helix Cooling System with Whisper Quiet technology (8)
- Quad-tread aluminum entrance steps (9)

- Bluetooth®/HDMI® high-output entertainment system
- Cargo accessory receiver
- Electric thermostatically controlled fireplace
- Keyless main entrance door
- LED exterior lighting
- MOR/ryde® pin box
- Oversized battery compartment
- Painted gelcoat fiberglass front cap
- Power kitchen vent with wall controls
- Sidewall and roof-mount solar prep
- Whole coach water purification system

LUXURY FIFTH WHEEL PACKAGE



Indulge and Impress

Premium features come standard, thanks to our Luxury Fifth Wheel and Pinnacle Advantage packages. They're the apex of towable comfort—where opulence meets unbeatable value. Now that's an indulgence you can feel good about.

LUXURY FIFTH WHEEL PACKAGE:

- 6-point electric auto-leveling system (1)
- Backup camera prep; camera and monitor optional (2)
- Carefree® power awning with Flex Guard fabric shield (3)
- Indoor/outdoor central vacuum system with kick pan (4)
- Franklin™ American-made residential furniture (5)
- Magnum Frame System (6)
- Magnum Truss™ XL6 roof system (7)
- Helix Cooling System with Whisper Quiet technology (8)
- Quad-tread aluminum entrance steps (9)
- Bluetooth®/HDMI® high-output entertainment system
- Cargo accessory receiver
- Electric thermostatically controlled fireplace
- Keyless main entrance door
- LED exterior lighting
- MOR/ryde® pin box
- Oversized battery compartment
- Painted gelcoat fiberglass front cap
- Power kitchen vent with wall controls
- Sidewall and roof-mount solar prep
- Whole coach water purification system

PINNACLE ADVANTAGE PACKAGE



PINNACLE ADVANTAGE PACKAGE:

- MOR/ryde LRE4000™ suspension system (1)
- Dual sun shade and blackout roller shades in living room (2)
- Residential Natural Cherry hardwood cabinet doors, miter-cut with 3-inch rails (3)
- Oversized 36-inch-wide residential showers (4)
- Powered 50-amp cord reel (5)
- Remote control system for levelers, awnings, sliderooms and exterior lights (6)
- Gel 360—front cap, rear cap and sidewalls all gelcoat fiberglass
- Big-screen LED HDTVs in living areas
- Wood-mantle fireplace surround with hidden storage and pullout drawer
- 80-inch Jayco Luxury Sleep System memory-foam mattress
- Blackout roller shades in bedroom
- 32-inch LED HDTV in bedroom with integrated DVD player
- Sliding, free-standing table and 4 chairs
- Stainless steel convection microwave oven

PINNACLE ADVANTAGE PACKAGE



PINNACLE ADVANTAGE PACKAGE:

- MOR/ryde LRE4000™ suspension system (1)
- Dual sun shade and blackout roller shades in living room (2)
- Residential Natural Cherry hardwood cabinet doors, miter-cut with 3-inch rails (3)
- Oversized 36-inch-wide residential showers (4)
- Powered 50-amp cord reel (5)
- Remote control system for levelers, awnings, sliderooms and exterior lights (6)
- Gel 360—front cap, rear cap and sidewalls all gelcoat fiberglass
- Big-screen LED HDTVs in living areas
- Wood-mantle fireplace surround with hidden storage and pullout drawer
- 80-inch Jayco Luxury Sleep System memory-foam mattress
- Blackout roller shades in bedroom
- 32-inch LED HDTV in bedroom with integrated DVD player
- Sliding, free-standing table and 4 chairs
- Stainless steel convection microwave oven



36FBTS CABINETS



36FBTS ENTRANCE STEPS

PINNACLE

MAKE EVERY TRIP A TREAT

Fun has never been this deluxe. Step up to a new level of leisure with the Pinnacle luxury fifth wheel line. Relax on massaging theater seats, stay fully stocked with a spacious kitchen pantry and enjoy some privacy with premium blackout shades.



36FBTS TAILGATE TV



36FBTS BATH



36FBTS BEDROOM



36FBTS THEATER SEATING



36FBTS CABINETS



36FBTS ENTRANCE STEPS

PINNACLE

MAKE EVERY TRIP A TREAT

Fun has never been this deluxe. Step up to a new level of leisure with the Pinnacle luxury fifth wheel line. Relax on massaging theater seats, stay fully stocked with a spacious kitchen pantry and enjoy some privacy with premium blackout shades.



36FBTS TAILGATE TV



36FBTS BATH



36FBTS BEDROOM



36FBTS THEATER SEATING



36FBTS INTERIOR



38FLSA INTERIOR



38FLSA KITCHEN



38FLSA BEDROOM



36FBTS INTERIOR



38FLSA INTERIOR

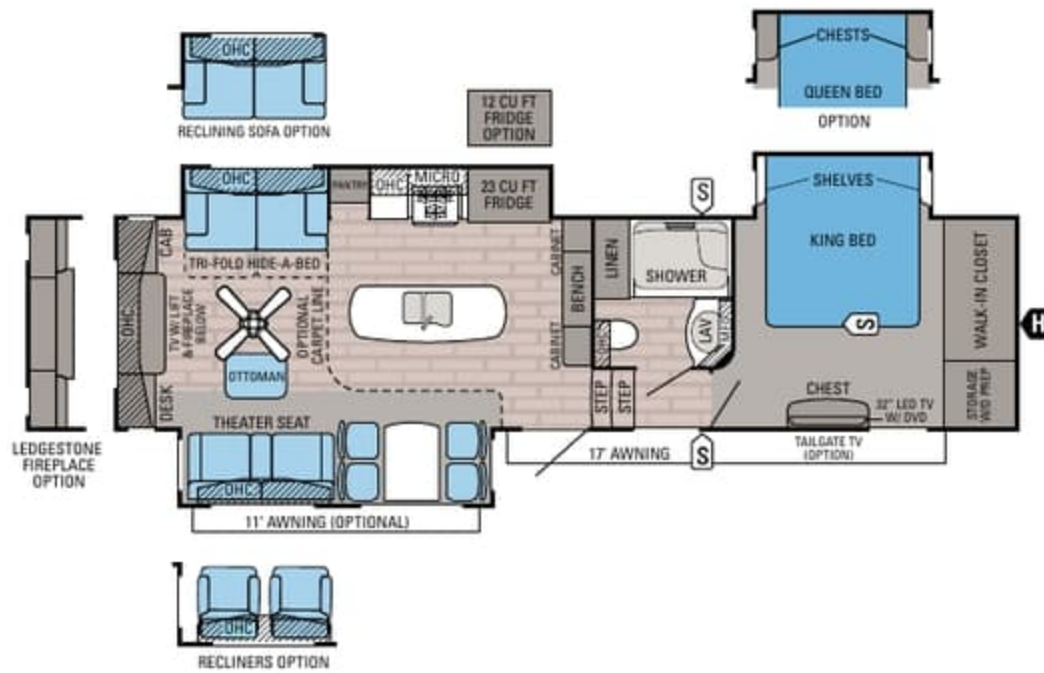


38FLSA KITCHEN



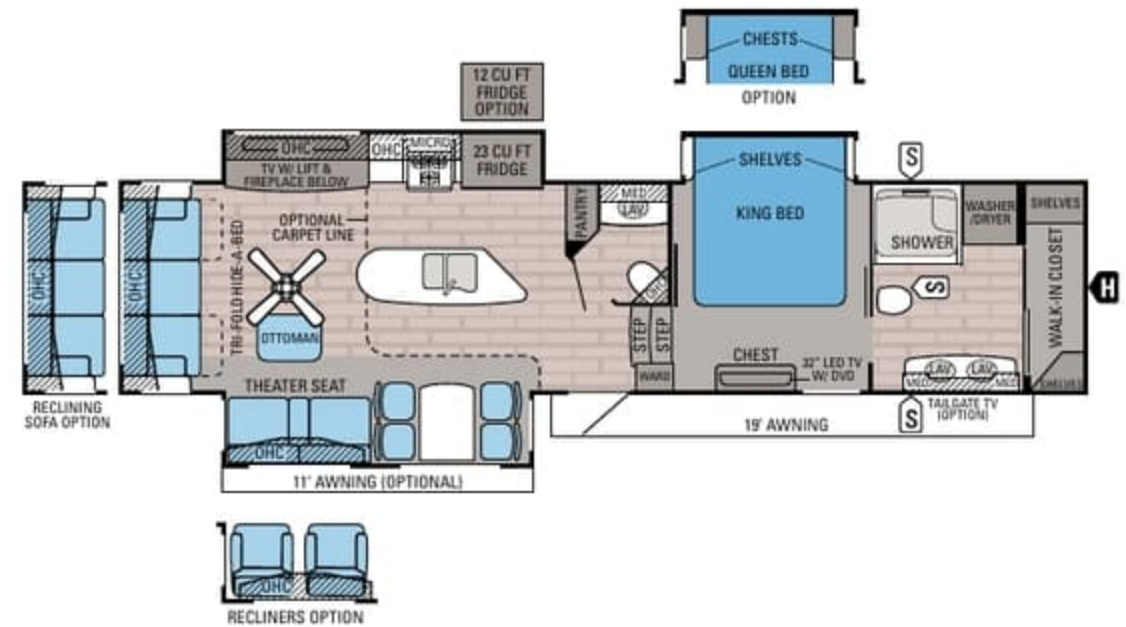
38FLSA BEDROOM

PINNACLE FLOORPLANS



PINNACLE | 31RETS

Ext. Length: 37' 8" Ext. Height: 160" Unloaded Wt. (lbs.): 12,420 Sleeps: 2-4



PINNACLE | 36FBTS

Ext. Length: 40' 10" Ext. Height: 159" Unloaded Wt. (lbs.): 12,715 Sleeps: 2-4



PINNACLE | 36KPTS

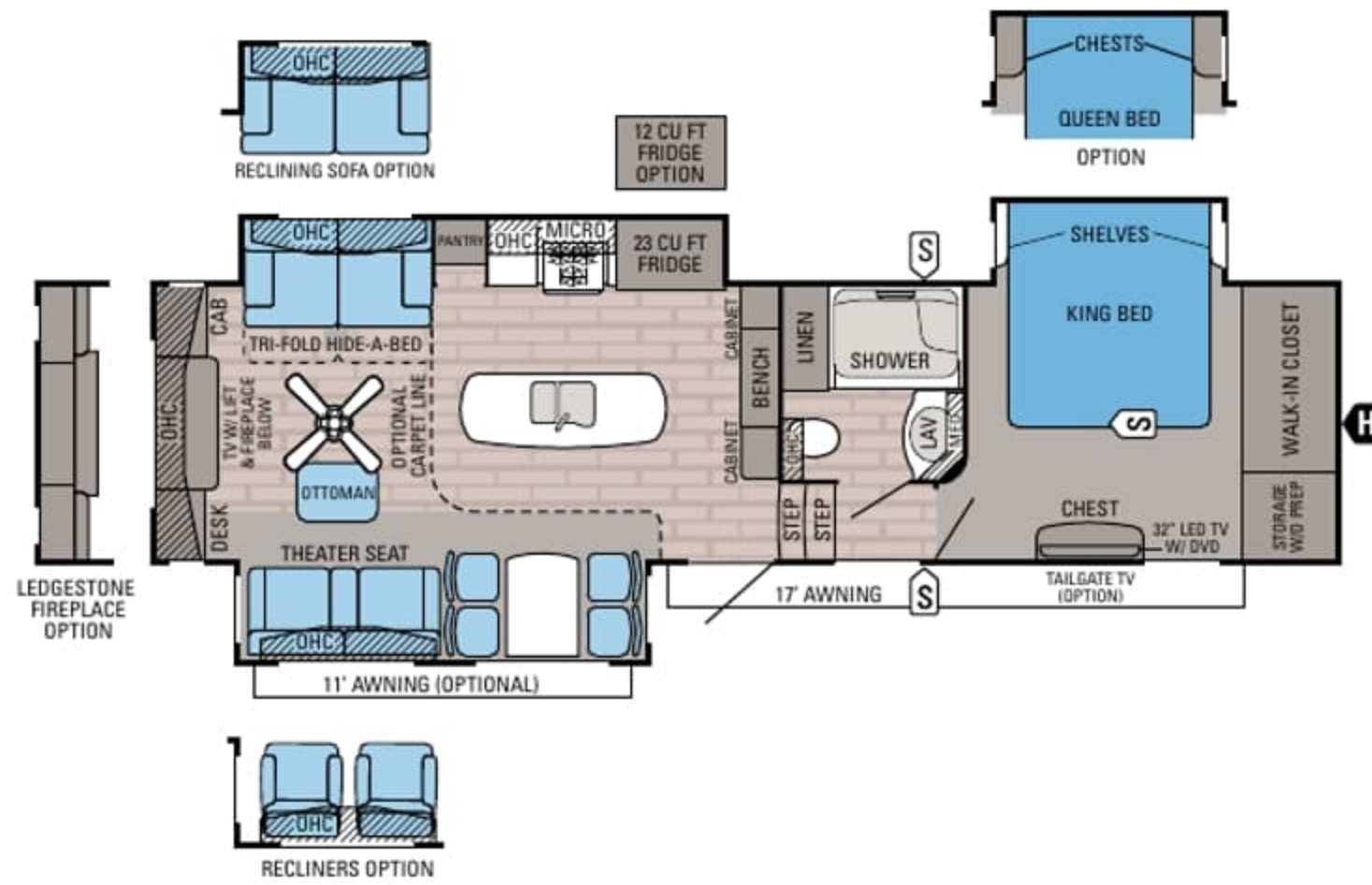
Ext. Length: 40' 4" Ext. Height: 160" Unloaded Wt. (lbs.): 12,790 Sleeps: 2-4



PINNACLE | 36REQS

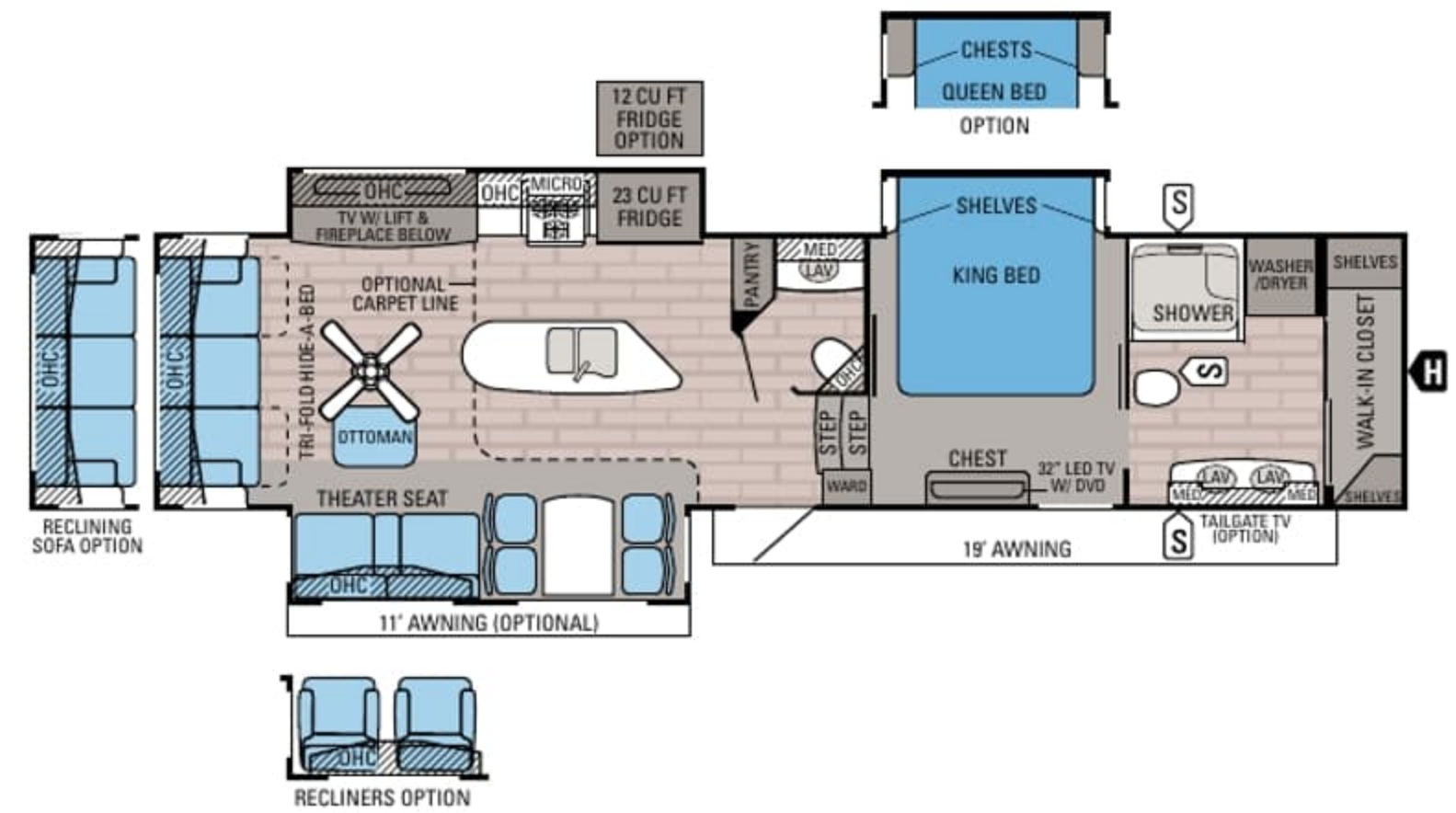
Ext. Length: 40' 6" Ext. Height: 159" Unloaded Wt. (lbs.): 12,990 Sleeps: 2-4

PINNACLE FLOORPLANS



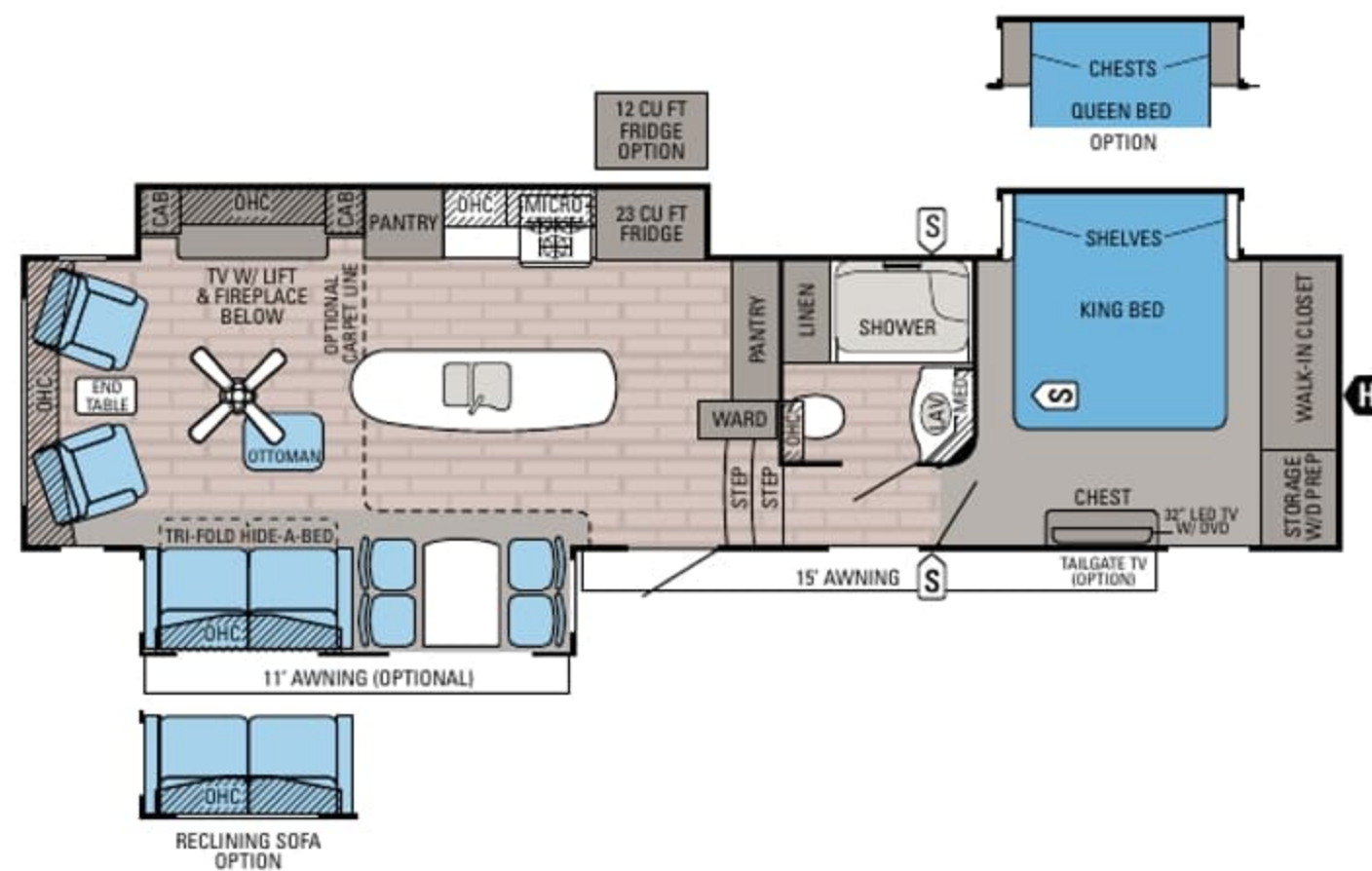
PINNACLE | 31RETS

Ext. Length: 37' 8" Ext. Height: 160" Unloaded Wt. (lbs.): 12,420 Sleeps: 2-4



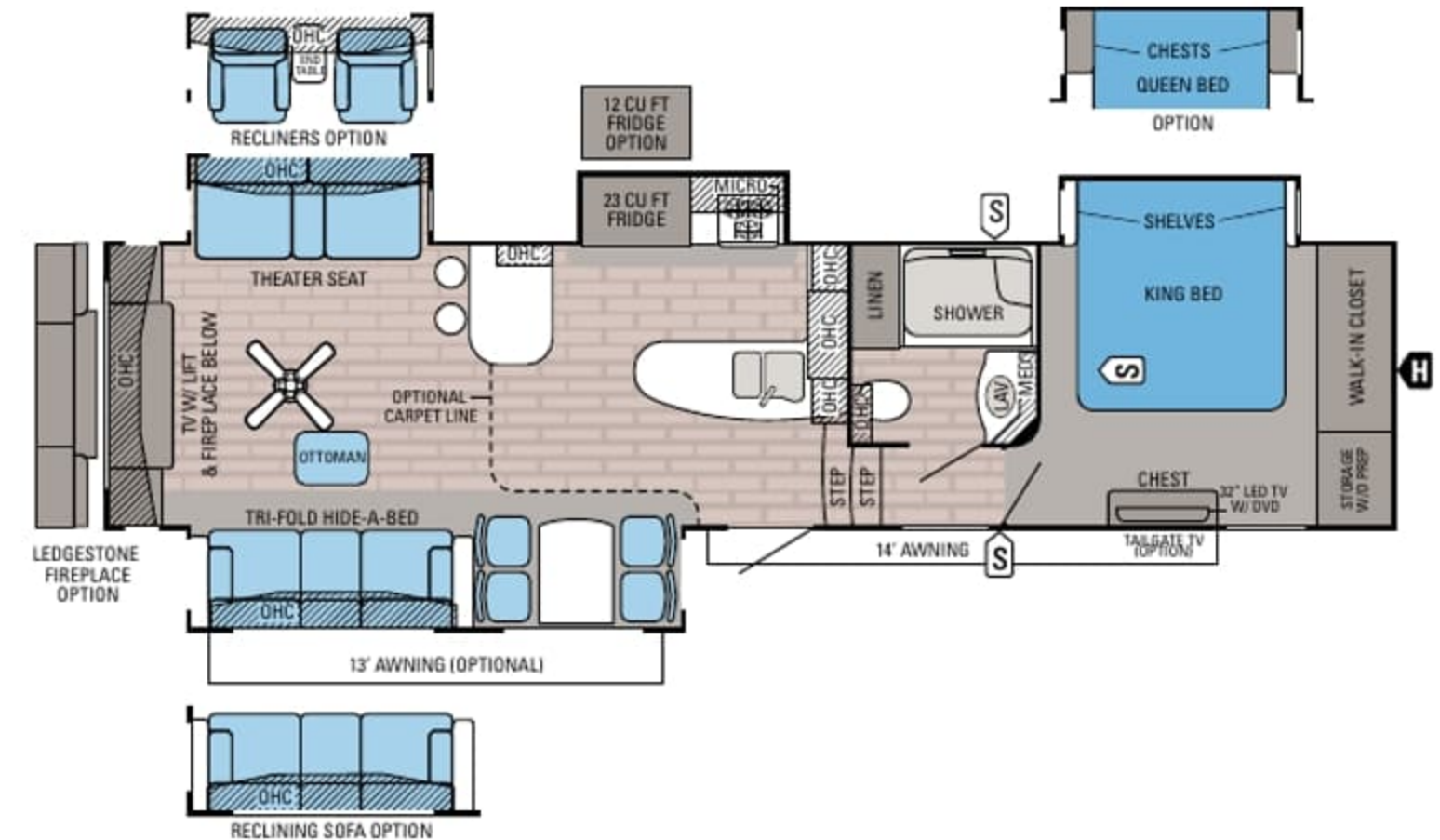
PINNACLE | 36FBTS

Ext. Length: 40' 10" Ext. Height: 159" Unloaded Wt. (lbs.): 12,715 Sleeps: 2-4



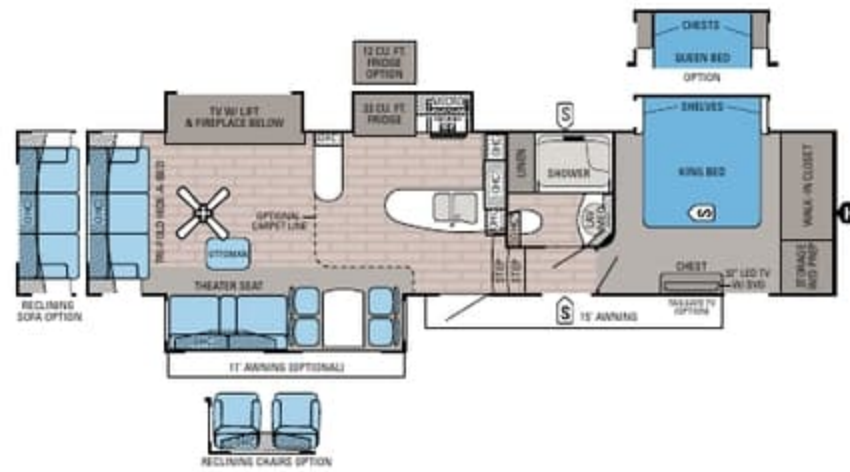
PINNACLE | 36KPTS

Ext. Length: 40' 4" Ext. Height: 160" Unloaded Wt. (lbs.): 12,790 Sleeps: 2-4



PINNACLE | 36REQS

Ext. Length: 40' 6" Ext. Height: 159" Unloaded Wt. (lbs.): 12,990 Sleeps: 2-4



PINNACLE | 36RSQS

Ext. Length: 40' 8" Ext. Height: 159" Unloaded Wt. (lbs.): 12,865 Sleeps: 2-4



PINNACLE | 38FLSA

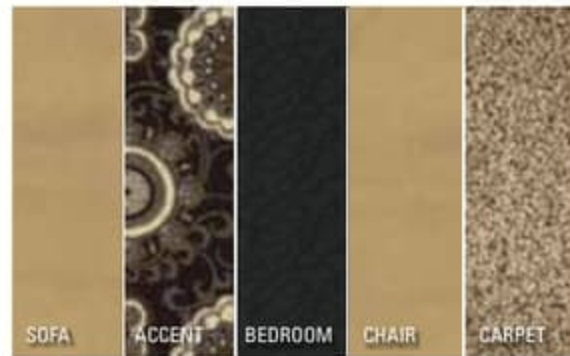
Ext. Length: 42' 1" Ext. Height: 161" Unloaded Wt. (lbs.): 13,505 Sleeps: 6

INTERIOR DÉCOR

CABERNET



CHAMPAGNE



ESPRESSO



WALNUT



PINNACLE SPECIFICATIONS

MODELS	DIMENSIONS						WEIGHTS (LBS.)				TANKS (GALS.)		
	TOTAL EXTERIOR LENGTH	EXTERIOR TRAVEL LENGTH*	EXTERIOR WIDTH	EXTERIOR HEIGHT (WITH A/C)	EXTERIOR HEIGHT (WITH OPTIONAL BEDROOM A/C)	INTERIOR HEIGHT (UPPER LEVEL)	UNLOADED VEHICLE WEIGHT	DRY HITCH WEIGHT	GROSS VEHICLE WEIGHT RATING	CARGO CARRYING CAPACITY	FRESH WATER CAPACITY (INCLUDES WATER HEATER)	GREY WASTE WATER CAPACITY	BLACK WASTE WATER CAPACITY
31RETS	37' 8"	36' 2"	102"	160"	160"	83"	12,420	2,510	15,250	2,830	85	87	50
36FBTS	40' 10"	39' 4"	102"	159"	160"	83"	12,715	2,555	15,950	3,235	85	87	87
36KPTS	40' 4"	38' 10"	102"	160"	160"	83"	12,790	2,715	15,950	3,160	85	87	50
36REQS	40' 6"	39' 0"	102"	159"	159"	83"	12,990	2,775	15,950	2,960	85	85	50
36RSQS	40' 8"	39' 3"	102"	159"	161"	83"	12,865	2,765	15,950	3,085	85	85	50
38FLSA	42' 1"	40' 8"	102"	161"	161"	83"	13,505	3,095	15,950	2,445	85	107	37

*Distance from the pin box to the bumper; total exterior length may be longer.

Unloaded Vehicle Weight (UVW): Sometimes referred to as "Dry Weight," UVW means the typical weight of this trailer as built at the factory. The UVW, as used in product literature and other promotional materials, does not include cargo, fresh water, propane, options or dealer-installed accessories.

Gross Vehicle Weight Rating (GVWR): GVWR means the maximum permissible weight of the trailer, including the UVW plus passengers, personal items, all cargo, fluids, options, and dealer-installed accessories. The GVWR is equal to or greater than the sum of the UVW and the CCC.

Cargo Carrying Capacity (CCC): CCC means the maximum weight of all passengers, personal items, food, fresh water, propane, tools, other cargo and dealer-installed accessories that can be carried by the trailer. CCC is equal to or less than GVWR minus UVW. The addition of options will decrease the CCC.

Hitch Weight (HW): The hitch weight, as used in product literature and other promotional materials, does not include cargo, fresh water, propane gas, options or dealer-installed accessories. The addition of these types of items will either add to or subtract from the stated hitch weight.

It is important for your safety and enjoyment that your tow vehicle be adequately sized and equipped to tow and handle the GVWR of the RV you select. Review weights and rating of your tow vehicle and consult a competent advisor for questions or advice. Whether you are new to RVing or a veteran, get a feel for the performance of your tow vehicle before heading out on the roadways. When you tow an RV, you must drive differently than when you drive a single vehicle. Practice hooking up, driving, backing up and braking in a safe environment or seek out professional instruction. Jayco affixes a weight label to each RV which lists weight information for that vehicle. See specifications chart above.

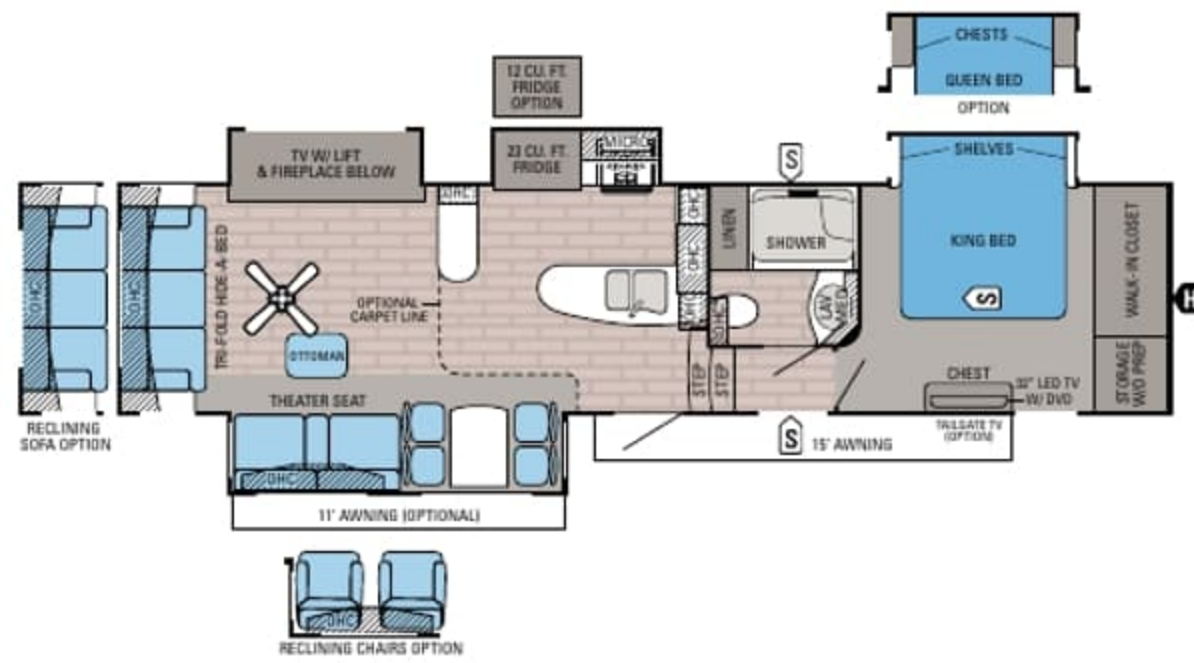
EXTERIOR OPTIONS



STANDARD GRAPHICS

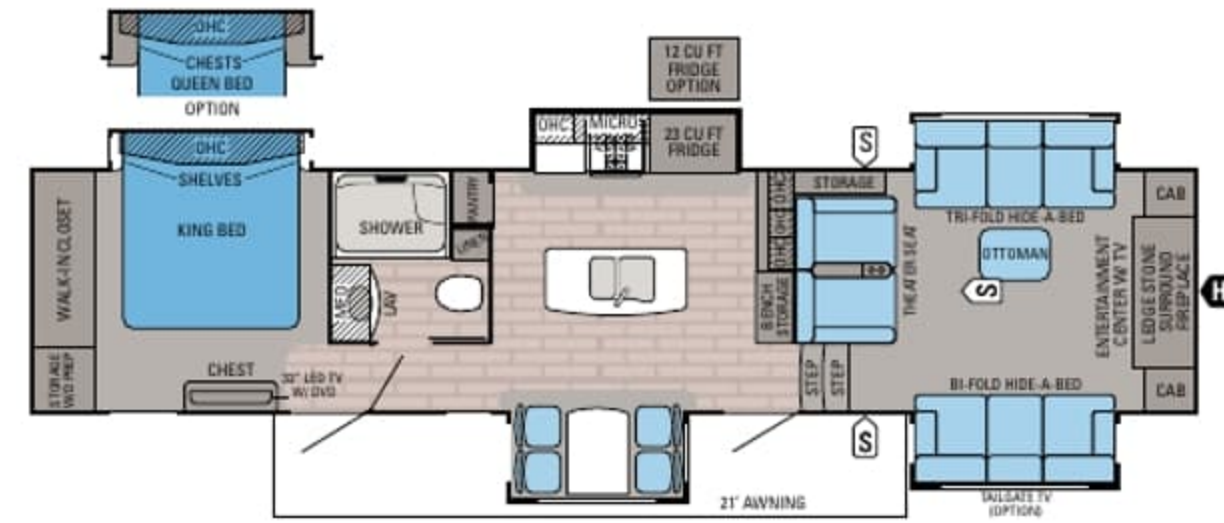


PREMIUM PAINT OPTION



PINNACLE | 36RSQS

Ext. Length: 40' 8" Ext. Height: 159" Unloaded Wt. (lbs.): 12,865 Sleeps: 2-4



PINNACLE | 38FLSA

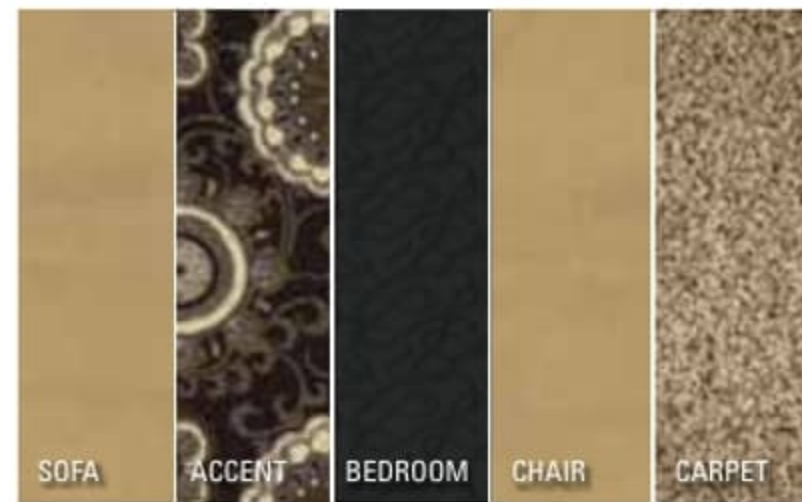
Ext. Length: 42' 1" Ext. Height: 161" Unloaded Wt. (lbs.): 13,505 Sleeps: 6

INTERIOR DÉCOR

CABERNET



CHAMPAGNE



ESPRESSO



WALNUT



PINNACLE SPECIFICATIONS

MODELS	DIMENSIONS						WEIGHTS (LBS.)				TANKS (GALS.)		
FLOORPLAN	TOTAL EXTERIOR LENGTH	EXTERIOR TRAVEL LENGTH*	EXTERIOR WIDTH	EXTERIOR HEIGHT (WITH A/C)	EXTERIOR HEIGHT (WITH OPTIONAL BEDROOM A/C)	INTERIOR HEIGHT (UPPER LEVEL)	UNLOADED VEHICLE WEIGHT	DRY HITCH WEIGHT	GROSS VEHICLE WEIGHT RATING	CARGO CARRYING CAPACITY	FRESH WATER CAPACITY (INCLUDES WATER HEATER)	GREY WASTE WATER CAPACITY	BLACK WASTE WATER CAPACITY
31RETS	37' 8"	36' 2"	102"	160"	160"	83"	12,420	2,510	15,250	2,830	85	87	50
36FBTS	40' 10"	39' 4"	102"	159"	160"	83"	12,715	2,555	15,950	3,235	85	87	87
36KPTS	40' 4"	38' 10"	102"	160"	160"	83"	12,790	2,715	15,950	3,160	85	87	50
36REQS	40' 6"	39' 0"	102"	159"	159"	83"	12,990	2,775	15,950	2,960	85	85	50
36RSQS	40' 8"	39' 3"	102"	159"	161"	83"	12,865	2,765	15,950	3,085	85	85	50
38FLSA	42' 1"	40' 8"	102"	161"	161"	83"	13,505	3,095	15,950	2,445	85	107	37

*Distance from the pin box to the bumper; total exterior length may be longer.

Unloaded Vehicle Weight (UVW): Sometimes referred to as "Dry Weight," UVW means the typical weight of this trailer as built at the factory. The UVW, as used in product literature and other promotional materials, does not include cargo, fresh water, propane, options or dealer-installed accessories.

Gross Vehicle Weight Rating (GVWR): GVWR means the maximum permissible weight of the trailer, including the UVW plus passengers, personal items, all cargo, fluids, options, and dealer-installed accessories. The GVWR is equal to or greater than the sum of the UVW and the CCC.

Cargo Carrying Capacity (CCC): CCC means the maximum weight of all passengers, personal items, food, fresh water, propane, tools, other cargo and dealer-installed accessories that can be carried by the trailer. CCC is equal to or less than GVWR minus UVW. The addition of options will decrease the CCC.

Hitch Weight (HW): The hitch weight, as used in product literature and other promotional materials, does not include cargo, fresh water, propane gas, options or dealer-installed accessories. The addition of these types of items will either add to or subtract from the stated hitch weight.

It is important for your safety and enjoyment that your tow vehicle be adequately sized and equipped to tow and handle the GVWR of the RV you select. Review weights and rating of your tow vehicle and consult a competent advisor for questions or advice. Whether you are new to RVing or a veteran, get a feel for the performance of your tow vehicle before heading out on the roadways. When you tow an RV, you must drive differently than when you drive a single vehicle. Practice hooking up, driving, backing up and braking in a safe environment or seek out professional instruction. Jayco affixes a weight label to each RV which lists weight information for that vehicle. See specifications chart above.

EXTERIOR OPTIONS



STANDARD GRAPHICS



PREMIUM PAINT OPTION

STANDARDS AND OPTIONS

LUXURY FIFTH WHEEL PACKAGE

6-point electric auto-leveling system
Backup camera/monitoring system prep
Carefree power awning with Flex Guard fabric shield
Indoor/outdoor central vacuum system with kick pan
Franklin American-made residential furniture
Magnum Frame System
Magnum Truss XL6 roof system
Helix Cooling System with Whisper Quiet technology
Quad-tread aluminum entrance steps
Bluetooth/HDMI high-output entertainment system
Cargo accessory receiver
Electric thermostatically controlled fireplace
Keyless main entrance door
LED exterior lighting
MOR/ryde pin box
Oversized battery compartment
Painted gelcoat fiberglass front cap
Power kitchen vent with wall controls
Sidewall and roof-mount solar prep
Whole coach water purification system

PINNACLE ADVANTAGE PACKAGE

MOR/ryde LRE4000 suspension system
Gel 360 – front cap, rear cap and sidewalls all gelcoat fiberglass
Big-screen LED HDTVs in living areas
80-inch Jayco Luxury Sleep System memory-foam mattress
Dual sun shade and blackout roller shades in living areas
32-inch LED HDTV in bedroom with integrated DVD player
Residential Natural Cherry hardwood cabinet doors, miter-cut with 3-inch rails
Oversized 36-inch-wide residential showers
Powered 50-amp cord reel
Sliding, free-standing table and 4 chairs
Stainless steel convection microwave oven
Remote control system for levelers, awnings, sliderooms and exterior lights
Wood-mantle fireplace surround with hidden storage and pullout drawer
Blackout roller shades in bedroom

CUSTOMER VALUE PACKAGE

15,000-BTU central A/C
20-gallon refresh rate gas/electric auto-ignition Atwood water heater
Arched interior ceiling
Bath skylight
Bathroom power vent
Bedsread
Under-bed floor safe
Oversized folding exterior grab handle
Frameless G20 dark-tinted windows
LED interior lighting
Security lights
Slam-latch™ baggage doors
Sofa and bed pillows
Solid-surface kitchen countertops

STANDARD EXTERIOR EQUIPMENT

Wide-body, 102-inch frame
Wide-stance front landing gear
TuffShell™ vacuum-bonded, laminated walls
Climate Shield™:

- Enclosed, insulated, heated underbelly
- High-BTU-output furnace
- Astro-Foil™ in roof and floors

Aerodynamic front and rear cap with LED lights
Seamless roof covering
10-inch I-class cambered structural steel I-beams
16-inch radial tires
7,000-pound axles
Completely enclosed and protected slideout mechanisms
Frameless, dark-tinted, safety-glass windows
30-inch x 78-inch entry door with oversized window
Exterior marine-grade speakers (2)
Front awning arm convenience outlet
ExpansiView opera-style dining area windows
Enclosed, protected basement drop-frame
Cable TV and outlet in basement
Convenient dual LP compartment (60 pounds total) on off-door side
Door-side compartment prepped for third 30-pound LP bottle
Stor-Galore™ pass-through basement storage with Slam-latch and strut assist
Heated, enclosed Uni-Dock™ utility center
50-amp power service

40,000-BTU furnace
75-gallon fresh water tank
50-gallon black tank capacity minimum (n/a on 38FLFS, 38FLSA)
Cable/satellite prep
Digital TV antenna
Outside grill prep
Under-mounted spare tire
Roof ladder
Hitch light
Upperdeck slideout convenience light
EZ-Stow™ – cargo area sliding storage tray
EZ-Cord™ – cargo area extension cord access port

STANDARD INTERIOR EQUIPMENT

Custom residential miter-cut cherry cabinet doors with hidden hinges
Hardwood cherry cabinet stiles
Hardwood slideout fascias
Residential-style pantry with pull-out drawers and trash can storage (select models)
Half-barrel hidden storage cabinet (where available)
Steel ball-bearing drawer guides, 75-pound capacity with full extension
Large, split, under-mounted, stainless steel sink
Residential-grade, pull-out kitchen faucet
Water heater bypass
23-cubic-foot residential refrigerator with water/ice in door
1,000-watt inverter
Flush-mounted, oversized, 21-inch oven with recessed glass cover
Residential-grade wood plank vinyl flooring
Shaw® R2X stain-resistant residential carpeting
Toe-kick kitchen lighting
90-amp power center with Charge Wizard®
Backlit command center for switches
Closeable and directional A/C vents
Prep for second A/C – prewired and tied into main ducting
Tri-fold hide-a-bed sofas with ottoman
Ceiling fan (n/a on 38FLSA)
Class A-style hardwood ceiling mantle with LED accent lighting
LED ceiling lights throughout
6-foot-6-inch-tall living area slideouts
Porcelain bath stool with foot flush
Under-mounted stainless steel bath lav sink
Robe hooks in bath
Hardwood headboard

Full-trunk, under-bed storage
Walk-in-style front closet with dual hanging rods and cedar lining
Mullion-style front wardrobe doors
Washer/dryer prep (accommodates stackable unit)
Oversized bedroom dresser storage
Bedroom slide fascia built-in night stand storage system

OPTIONS

Customer Value Package with 15,000-BTU central A/C with heat pump
Queen bed
LedgeStone fireplace surround with 58-inch LED TV (31RETS, 36REQS)
Carpet in the living area (n/a on 38FLSA)
Reclining main sofa (n/a on 38FLSA)
Two recliners in lieu of theater seats (select models)
Wireless backup camera/monitoring system
39-inch LED tailgate TV – in cargo area on sliding bracket
G-rated Goodyear® tires and rims (16 inch)
Second 15,000-BTU A/C (low-profile), tied into dual-duct system
Third low-profile A/C in front living room
Generator prep
5,500-watt gas generator
Premium paint package
Thermal pane tinted safety glass windows
Second power awning (n/a on 38FLSA)
Slideout awning covers
Weber® Q® Electric Grill and portable stand
Outside gas grill
12-cubic-foot refrigerator

--- See pages 4-5 for details on the Luxury Fifth Wheel and Pinnacle Advantage packages ---

STANDARDS AND OPTIONS

LUXURY FIFTH WHEEL PACKAGE

6-point electric auto-leveling system
Backup camera/monitoring system prep
Carefree power awning with Flex Guard fabric shield
Indoor/outdoor central vacuum system with kick pan
Franklin American-made residential furniture
Magnum Frame System
Magnum Truss XL6 roof system
Helix Cooling System with Whisper Quiet technology
Quad-tread aluminum entrance steps
Bluetooth/HDMI high-output entertainment system
Cargo accessory receiver
Electric thermostatically controlled fireplace
Keyless main entrance door
LED exterior lighting
MOR/ryde pin box
Oversized battery compartment
Painted gelcoat fiberglass front cap
Power kitchen vent with wall controls
Sidewall and roof-mount solar prep
Whole coach water purification system

PINNACLE ADVANTAGE PACKAGE

MOR/ryde LRE4000 suspension system
Gel 360 – front cap, rear cap and sidewalls all gelcoat fiberglass
Big-screen LED HDTVs in living areas
80-inch Jayco Luxury Sleep System memory-foam mattress
Dual sun shade and blackout roller shades in living areas
32-inch LED HDTV in bedroom with integrated DVD player
Residential Natural Cherry hardwood cabinet doors, miter-cut with 3-inch rails
Oversized 36-inch-wide residential showers
Powered 50-amp cord reel
Sliding, free-standing table and 4 chairs
Stainless steel convection microwave oven
Remote control system for levelers, awnings, sliderooms and exterior lights
Wood-mantle fireplace surround with hidden storage and pullout drawer
Blackout roller shades in bedroom

CUSTOMER VALUE PACKAGE

15,000-BTU central A/C
20-gallon refresh rate gas/electric auto-ignition Atwood water heater
Arched interior ceiling
Bath skylight
Bathroom power vent
Bedsread
Under-bed floor safe
Oversized folding exterior grab handle
Frameless G20 dark-tinted windows
LED interior lighting
Security lights
Slam-latch™ baggage doors
Sofa and bed pillows
Solid-surface kitchen countertops

STANDARD EXTERIOR EQUIPMENT

Wide-body, 102-inch frame
Wide-stance front landing gear
TuffShell™ vacuum-bonded, laminated walls
Climate Shield™:
• Enclosed, insulated, heated underbelly
• High-BTU-output furnace
• Astro-Foil™ in roof and floors
Aerodynamic front and rear cap with LED lights
Seamless roof covering
10-inch I-class cambered structural steel I-beams
16-inch radial tires
7,000-pound axles
Completely enclosed and protected slideout mechanisms
Frameless, dark-tinted, safety-glass windows
30-inch x 78-inch entry door with oversized window
Exterior marine-grade speakers (2)
Front awning arm convenience outlet
ExpansiView opera-style dining area windows
Enclosed, protected basement drop-frame
Cable TV and outlet in basement
Convenient dual LP compartment (60 pounds total) on off-door side
Door-side compartment prepped for third 30-pound LP bottle
Stor-Galore™ pass-through basement storage with Slam-latch and strut assist
Heated, enclosed Uni-Dock™ utility center
50-amp power service

40,000-BTU furnace
75-gallon fresh water tank
50-gallon black tank capacity minimum (n/a on 38FLFS, 38FLSA)
Cable/satellite prep
Digital TV antenna
Outside grill prep
Under-mounted spare tire
Roof ladder
Hitch light
Upperdeck slideout convenience light
EZ-Stow™ – cargo area sliding storage tray
EZ-Cord™ – cargo area extension cord access port

STANDARD INTERIOR EQUIPMENT

Custom residential miter-cut cherry cabinet doors with hidden hinges
Hardwood cherry cabinet stiles
Hardwood slideout fascias
Residential-style pantry with pull-out drawers and trash can storage (select models)
Half-barrel hidden storage cabinet (where available)
Steel ball-bearing drawer guides, 75-pound capacity with full extension
Large, split, under-mounted, stainless steel sink
Residential-grade, pull-out kitchen faucet
Water heater bypass
23-cubic-foot residential refrigerator with water/ice in door
1,000-watt inverter
Flush-mounted, oversized, 21-inch oven with recessed glass cover
Residential-grade wood plank vinyl flooring
Shaw® R2X stain-resistant residential carpeting
Toe-kick kitchen lighting
90-amp power center with Charge Wizard®
Backlit command center for switches
Closeable and directional A/C vents
Prep for second A/C – prewired and tied into main ducting
Tri-fold hide-a-bed sofas with ottoman
Ceiling fan (n/a on 38FLSA)
Class A-style hardwood ceiling mantle with LED accent lighting
LED ceiling lights throughout
6-foot-6-inch-tall living area slideouts
Porcelain bath stool with foot flush
Under-mounted stainless steel bath lav sink
Robe hooks in bath
Hardwood headboard

Full-trunk, under-bed storage
Walk-in-style front closet with dual hanging rods and cedar lining
Mullion-style front wardrobe doors
Washer/dryer prep (accommodates stackable unit)
Oversized bedroom dresser storage
Bedroom slide fascia built-in night stand storage system

OPTIONS

Customer Value Package with 15,000-BTU central A/C with heat pump
Queen bed
Ledgestone fireplace surround with 58-inch LED TV (31RETS, 36REQS)
Carpet in the living area (n/a on 38FLSA)
Reclining main sofa (n/a on 38FLSA)
Two recliners in lieu of theater seats (select models)
Wireless backup camera/monitoring system
39-inch LED tailgate TV – in cargo area on sliding bracket
G-rated Goodyear® tires and rims (16 inch)
Second 15,000-BTU A/C (low-profile), tied into dual-duct system
Third low-profile A/C in front living room
Generator prep
5,500-watt gas generator
Premium paint package
Thermal pane tinted safety glass windows
Second power awning (n/a on 38FLSA)
Slideout awning covers
Weber® Q® Electric Grill and portable stand
Outside gas grill
12-cubic-foot refrigerator

- - - - See pages 4-5 for details on the Luxury Fifth Wheel and Pinnacle Advantage packages - - - -

LET'S JAYCO—AND LEAVE OUR WORRIES BEHIND.



THE JAYCO DIFFERENCE

When you go with Jayco, you get one of the industry's strongest frames and rock-solid construction.

1. Vacuum-bonded walls and Gel 360 premium gelcoat fiberglass exteriors for better protection from the elements

2. Magnum Truss XL6 Roof System withstands 4,500 pounds—50 percent more than other roofs

3. Welded aluminum frame for a durable, lightweight structure

4. Double layer of fiberglass insulation behind the front cap, plus Flexfoil® and fiberglass insulation in the floor to provide extra warmth where it's needed most—in the bedroom

5. Painted gelcoat fiberglass front cap withstands the rigors of the road with infused paint and gel coating, plus ¼-inch plywood bracing for additional support—not typically found on competing fifth wheels

6. MOR/ryde LRE4000 rubberized suspension system provides smoother towing and better protection from damaging road shock

7. Helix Cooling System with Whisper Quiet technology

8. 6-point electric leveling system

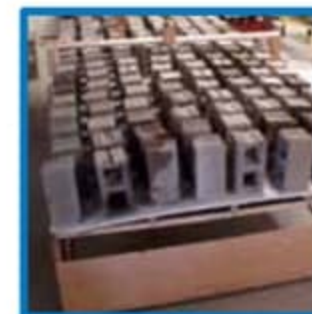
9. Carefree power awning with Flex Guard fabric shield

10. Quad-tread aluminum entrance steps

We know that your family fun rides on our commitment to quality. So we go the extra mile to make products that last—and stand behind them longer than anyone in the business.



JAYCO'S ROOF VS OTHER ROOFS



4,500 POUNDS ON A JAYCO ROOF VS. OTHER ROOFS

THE MAGNUM TRUSS XL6 ROOF SYSTEM 50 percent stronger

11. Keyless main entrance door

12. Cargo accessory receiver

13. Sidewall and roof-mount solar prep

14. MOR/ryde pin box

15. Magnum Frame System



CLIMATE SHIELD

Extend your camping season with the Jayco Climate Shield. It protects against extreme heat and extreme freezing—even in temperatures as high as 100 degrees or as low as zero degrees (Fahrenheit).*

LIVING ROOM



KITCHEN



BATHROOM



HOLDING TANK



BEDROOM



*Pinnacle was tested in zero degrees F and 100 degrees F weather over an extended period of time in a controlled environment and all functions of the coach were fully operational. Testing was done in a completely controlled environment; therefore, temperatures during testing may not represent actual temperatures in nature, and cannot account for elements such as wind or moisture. In actual use, unit may not perform as well. Supplier of cooling components does not guarantee anything better than 20 degrees difference from ambient temperature. In addition, outside components are subject to freezing and require steps to properly insulate. Jayco's warranty does not cover damage caused by freezing. To learn more about Climate Shield and testing done by Jayco, visit www.jayco.com.

LET'S JAYCO—AND LEAVE OUR WORRIES BEHIND.



THE JAYCO DIFFERENCE

When you go with Jayco, you get one of the industry's strongest frames and rock-solid construction.

- 1. Vacuum-bonded walls and Gel 360 premium gelcoat fiberglass exteriors** for better protection from the elements
- 2. Magnum Truss XL6 Roof System** withstands 4,500 pounds—50 percent more than other roofs
- 3. Welded aluminum frame** for a durable, lightweight structure
- 4. Double layer of fiberglass insulation** behind the front cap, plus Flexfoil® and fiberglass insulation in the floor to provide extra warmth where it's needed most—in the bedroom

5. Painted gelcoat fiberglass front cap withstands the rigors of the road with infused paint and gel coating, plus ¼-inch plywood bracing for additional support—not typically found on competing fifth wheels

6. MOR/ryde LRE4000 rubberized suspension system provides smoother towing and better protection from damaging road shock

7. Helix Cooling System with Whisper Quiet technology

8. 6-point electric leveling system

9. Carefree power awning with Flex Guard fabric shield

10. Quad-tread aluminum entrance steps

We know that your family fun rides on our commitment to quality. So we go the extra mile to make products that last—and stand behind them longer than anyone in the business.



JAYCO'S ROOF **VS** OTHER ROOFS



4,500 POUNDS ON A JAYCO ROOF VS. OTHER ROOFS

THE MAGNUM TRUSS XL6 ROOF SYSTEM **50 percent stronger**

11. Keyless main entrance door

12. Cargo accessory receiver

13. Sidewall and roof-mount solar prep

14. MOR/ryde pin box

15. Magnum Frame System



CLIMATE SHIELD

Extend your camping season with the Jayco Climate Shield. It protects against extreme heat and extreme freezing—even in temperatures as high as 100 degrees or as low as zero degrees (Fahrenheit).*

LIVING ROOM



KITCHEN



BATHROOM



HOLDING TANK



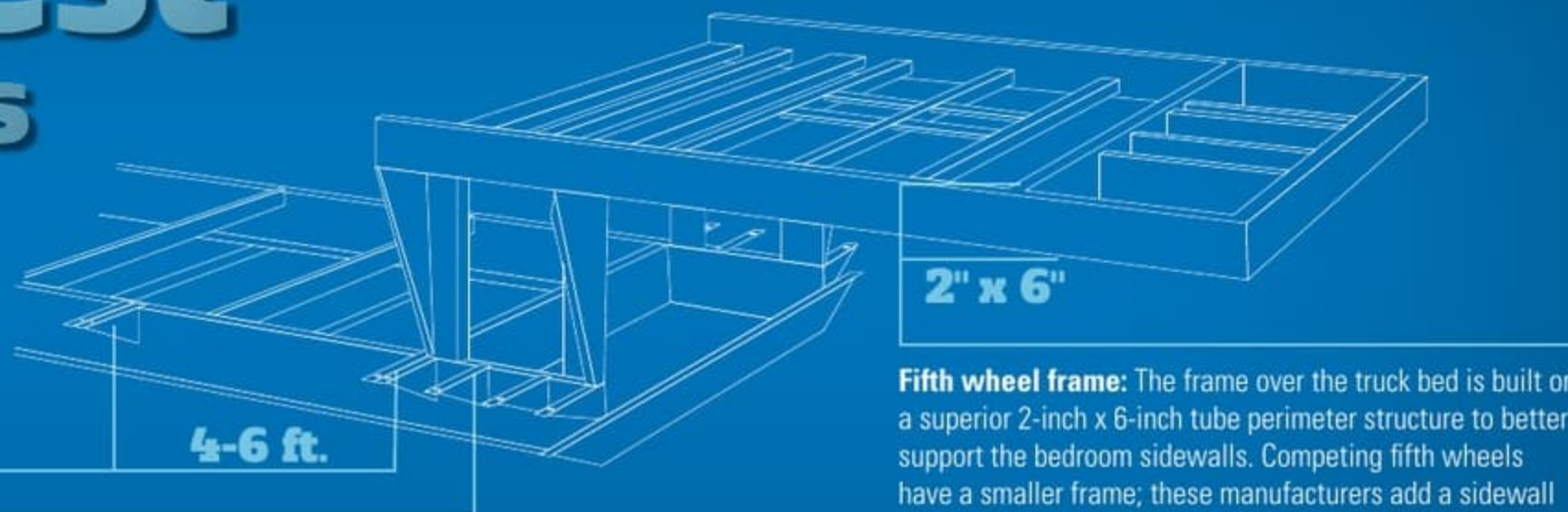
BEDROOM



*Pinnacle was tested in zero degrees F and 100 degrees F weather over an extended period of time in a controlled environment and all functions of the coach were fully operational. Testing was done in a completely controlled environment; therefore, temperatures during testing may not represent actual temperatures in nature, and cannot account for elements such as wind or moisture. In actual use, unit may not perform as well. Supplier of cooling components does not guarantee anything better than 20 degrees difference from ambient temperature. In addition, outside components are subject to freezing and require steps to properly insulate. Jayco's warranty does not cover damage caused by freezing. To learn more about Climate Shield and testing done by Jayco, visit www.jayco.com.

WE START WITH ONE OF THE INDUSTRY'S **strongest** foundations

Full-width outriggers: We build on full-width outriggers that are spaced 4-6 feet apart (vs. 8 feet) to better support the weight of the wall.



I-class cambered structural steel I-beams: Jayco uses a unique molded, one-piece design to prevent unit from twisting; competing three-piece I-beams can warp over time at the welded seams.

Fifth wheel frame: The frame over the truck bed is built on a superior 2-inch x 6-inch tube perimeter structure to better support the bedroom sidewalls. Competing fifth wheels have a smaller frame; these manufacturers add a sidewall support seam to compensate for expansion joints.

Learn more at StrongFoundation.Jayco.com



Generations of family fun.


Meet your Jayco Dealer



We work hard—so you can play hard. From finding the perfect Jayco for your family to providing flexible financing options and full-service support, we're here to help.

Follow Jayco



Jayco, Inc., P.O. Box 460, Middlebury, IN 46540, www.jayco.com  See dealer for further information and prices. All information in this brochure is the latest available at the time of publication approval. Jayco reserves the right to make changes and to discontinue models without notice or obligation. Photos in this brochure may show optional equipment and props for photography purposes. RVs built for sale in Canada may differ to conform to Canadian codes. ©2015 Jayco, Inc. 0915-50K Printed in U.S.A.

2
YEAR
WARRANTY

FREE
ROADSIDE
ASSISTANCE

Travel with confidence, with our industry-leading, bumper-to-front limited warranty and a year's access to Coach-Net™—the country's largest RV emergency road service.

For a copy of our 2-year limited warranty with full terms and conditions, please contact your local Jayco dealer.

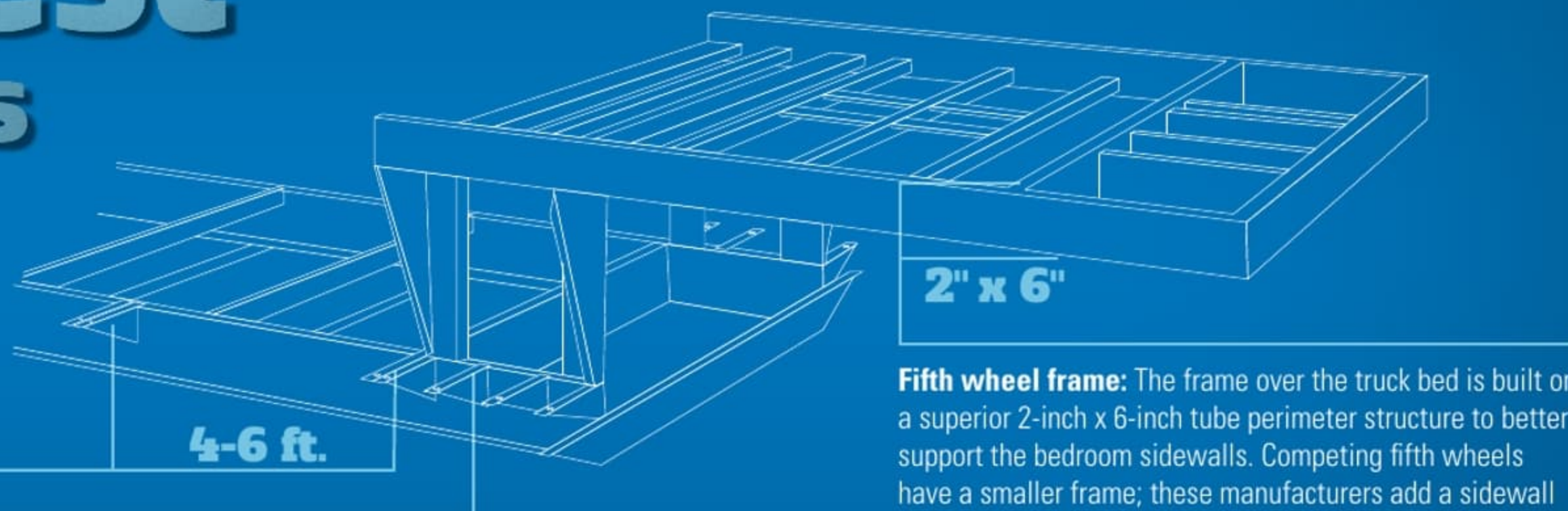
eco advantage™

Jayco's long-term commitment to generations of family fun

After four years of increased efforts to eliminate waste, conserve energy and increase recycling, we've come a long way in building RVs that are not only better for your family—but also better for the planet. **Learn more at Jayco.com/EcoAdvantage**

WE START WITH ONE OF THE INDUSTRY'S **strongest** foundations

Full-width outriggers: We build on full-width outriggers that are spaced 4-6 feet apart (vs. 8 feet) to better support the weight of the wall.



I-class cambered structural steel I-beams: Jayco uses a unique molded, one-piece design to prevent unit from twisting; competing three-piece I-beams can warp over time at the welded seams.

Fifth wheel frame: The frame over the truck bed is built on a superior 2-inch x 6-inch tube perimeter structure to better support the bedroom sidewalls. Competing fifth wheels have a smaller frame; these manufacturers add a sidewall support seam to compensate for expansion joints.

Learn more at StrongFoundation.Jayco.com




Meet your Jayco Dealer



We work hard—so you can play hard. From finding the perfect Jayco for your family to providing flexible financing options and full-service support, we're here to help.

Follow Jayco



Jayco, Inc., P.O. Box 460, Middlebury, IN 46540, www.jayco.com  See dealer for further information and prices. All information in this brochure is the latest available at the time of publication approval. Jayco reserves the right to make changes and to discontinue models without notice or obligation. Photos in this brochure may show optional equipment and props for photography purposes. RVs built for sale in Canada may differ to conform to Canadian codes. ©2015 Jayco, Inc. 0915-50K Printed in U.S.A.

2
YEAR
WARRANTY

FREE
ROADSIDE
ASSISTANCE

Travel with confidence, with our industry-leading, bumper-to-front limited warranty and a year's access to Coach-Net™—the country's largest RV emergency road service.

For a copy of our 2-year limited warranty with full terms and conditions, please contact your local Jayco dealer.

eco advantage™

Jayco's long-term commitment to generations of family fun

After four years of increased efforts to eliminate waste, conserve energy and increase recycling, we've come a long way in building RVs that are not only better for your family—but also better for the planet. **Learn more at Jayco.com/EcoAdvantage**