

 Keystone RV  
Company

# Springdale

**A BETTER WAY  
TO CAMP**

**THE COMPLETE  
CHOICE**



**DSI**  
Annual RVDA DEALER  
SATISFACTION INDEX

TRAVEL TRAILERS & FIFTH WHEELS

**EASTERN  
EDITION**

**Keystone RV  
Company™**

When Cole Davis founded Keystone RV in 1996 his vision was clear: Build a quality RV loaded with features priced thousands less than other RVs on the market. To accomplish his goal, Cole would recruit and build a strong team, focus on keeping overhead low, and empower the people closest to the customer to make decisions. Within a few short months after opening the doors, Keystone produced its very first camper. Delivering big on quality, features and value, the public fell in love and a star was born.

As customers appetite skyrocketed, new Keystone models were added to satisfy growing customer demand. Along with this tremendous growth came the need for expanded production. To meet this need, more manufacturing plants were built and staffed. By the beginning of 2000, Keystone was leading the industry in fifth wheel and trailer sales. Today, Keystone RV Company has grown to encompass over 1 million square feet of manufacturing space with facilities in Goshen, Indiana and Pendleton, Oregon. While Keystone is no longer the small “start up” we once were, our mission has remained true to Cole’s vision—“Do the job right and make sure we deliver a quality product every time.”

# *Our Story*

An original Keystone RV brand 17 years in the making... **SPRINGDALE** is a benchmark of success in the RV industry as well as a legacy for our company Keystone RV. Having made countless camping adventures even better... The **SPRINGDALE** brand of travel trailers has exceeded expectations and helped create memories for our customers that will last for many years to come.

At Keystone RV, we pride ourselves on unmatched quality control procedures and maintain customer service that is second to none. With our 17 year proven track record... **SPRINGDALE** travel trailers are constructed with our customers in mind. This quality craftsmanship and attention to detail ensures our customers a peace of mind that they will continue to get the most out of their camping season.

With **SPRINGDALE**, we understand that our customer’s hard earned money should go just as far as their adventures can take them. That is why we believe in the importance of delivering the best floor plans, best features, best look and best quality... period. Once on the road to adventure, our customers will see how camping in their **SPRINGDALE** travel trailer “is just plain better”! Unmatched in its design, **SPRINGDALE** offers numerous features you can’t find on any of our competitors, as well as more standard options and amenities than any travel trailer in its class. From our interior vaulted ceiling, 14’ Super Slide Room to the “Do More” dinette table, we have remained focused on providing great value and convenient features that will always make camping in your **SPRINGDALE** travel trailer... A Better Way To Camp!

# *Springdale*

**THE COMPLETE CHOICE**

## **SUMMERLAND SERIES MINI SINGLE AXLE**

- Full Size Compact Travel Trailer
- Complete Floorplan Choices
- Priced to Move & Create Customers



## **SUMMERLAND SERIES**

- Wide Variety of Floorplans
- Everything You Need To Go Camping
- Options Available To Elevate The Summerland Value



## **SPRINGDALE**

- Complete Collection of Couples Coaches & Family Bunk Models
- Full Featured Travel Trailer With The Look & Options Not Found On Our Competition
- Everything From Single Slide 25' to 38' Double Slides



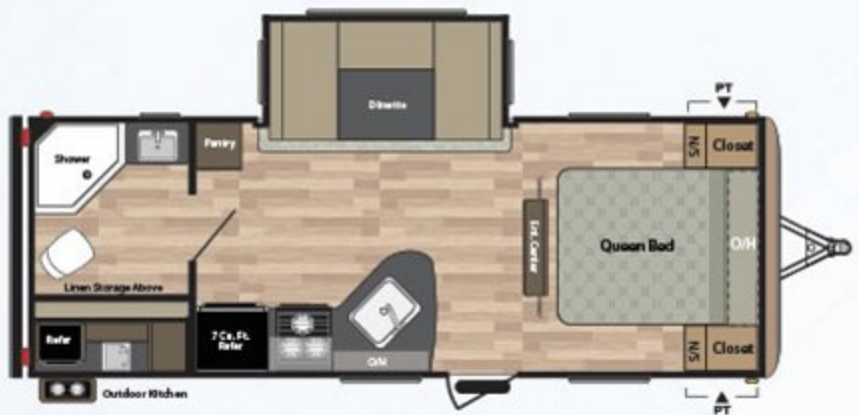
## **SPRINGDALE FIFTH WHEELS**

- The Full Featured Entry Level 5th
- Great Bunkhouse & Couples Units
- Full Color Laminated Fiberglass



LIMITED AVAILABILITY

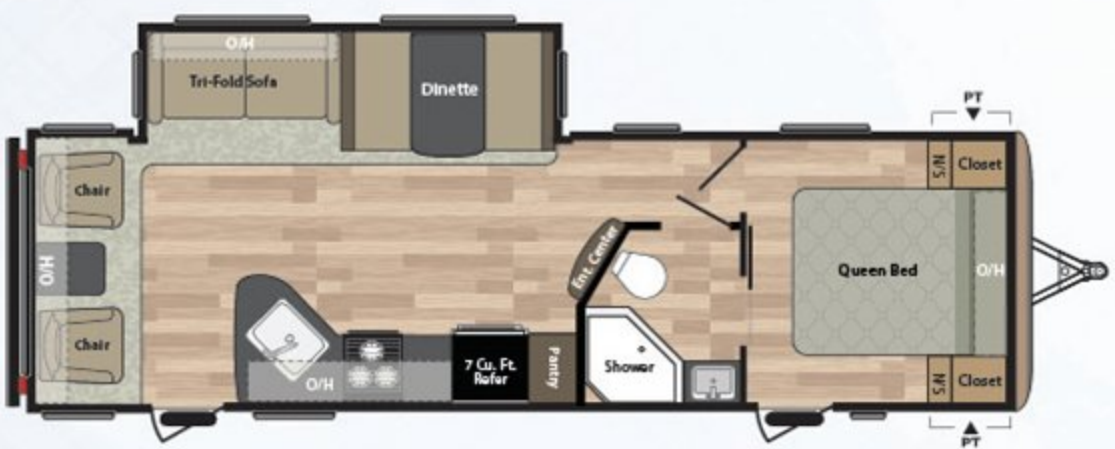
## ADVENTURE PACKAGE



**225RB**  
WEIGHT: 5858 LENGTH: 26' 3"



**262RK** **NEW**  
WEIGHT: 6440 LENGTH: 30' 2"



**271RL**  
WEIGHT: 6790 LENGTH: 31' 10"



**282BH**  
WEIGHT: 6929 LENGTH: 32' 1"



**287RB**  
WEIGHT: 7606 LENGTH: 32' 10"



**293RK**  
WEIGHT: 7145 LENGTH: 33' 3"

# TRAVEL TRAILER FLOORPLANS



**301BH** **NEW**  
WEIGHT: 7410 LENGTH: 34' 0"



**303BH**  
WEIGHT: 7998 LENGTH: 35' 0"



**310BH**  
WEIGHT: 7882 LENGTH: 35' 11"



**311RE**  
WEIGHT: 8324 LENGTH: 35' 7"



**330KI**  
WEIGHT: 9102 LENGTH: 37' 0"



// 303BH SHOWN IN PEBBLE DECOR

MODEL	SHIPPING WEIGHT	CARRYING CAPACITY	HITCH WEIGHT	EXT LENGTH*	EXT HEIGHT	FRESH WATER	WASTE WATER	GREY WATER	LPB
225RB	6025	1620	645	26' 3"	11' 3"	52	42	42	60
262RK	6345	1405	750	30' 2"	11' 3"	52	30	78	60
271RL	6780	2755	735	31' 10"	11' 3"	52	39	30	60
282BH	6929	2641	770	32' 1"	11' 3"	52	42	74	60
287RB	7606	2119	925	32' 10"	11' 3"	52	42	74	60
293RK	7145	2580	925	33' 3"	11' 3"	52	30	69	60
301BH	7370	2325	895	34' 0"	11' 3"	52	30	39	60
303BH	7998	1772	970	35' 0"	11' 4"	52	42	42	60
310BH	7882	2013	1095	35' 11"	10' 11"	52	42	84	60
311RE	8326	1434	960	35' 7"	10' 11"	52	42	84	60
330KI	9102	2148	1310	37' 0"	11' 4"	52	42	68	60

DISCLAIMER: Product information is as accurate as possible as of the date of publication of this brochure. All features, floor plans, and specifications in this brochure are subject to change without notice. Please also consult Keystone's web site at [www.keystonerv.com](http://www.keystonerv.com) for more current product information and specifications. Tow Vehicle Disclaimer. CAUTION: Owners of Keystone recreational vehicles are solely responsible for the selection and proper use of tow vehicles. All customers should consult with a motor vehicle manufacturer or their dealer concerning the purchase and use of suitable tow vehicles for Keystone products. Keystone disclaims any liability or damages suffered as a result of the selection, operation, use or misuse of a tow vehicle. KEYSTONE'S LIMITED WARRANTY DOES NOT COVER DAMAGE TO THE RECREATIONAL VEHICLE OR THE TOW VEHICLE AS A RESULT OF THE SELECTION, OPERATION, USE OR MISUSE OF THE TOW VEHICLE. \*Length is defined as the distance from the centerline of hitch pin/coupler to rear bumper of trailer. 01.16

# Springdale *Limited Edition*



**260LE**

WEIGHT: 5210 LENGTH: 28' 10"



**270LE**

WEIGHT: 6975 LENGTH: 32' 5"



MODEL	SHIPPING WEIGHT	CARRYING CAPACITY	HITCH WEIGHT	EXTERIOR LENGTH*	EXTERIOR HEIGHT	FRESH WATER	WASTE WATER	GREY WATER	LPG
260LE	5210	2430	640	28' 10"	11' 3"	52	42	34	60
270LE	6975	2545	720	32' 5"	11' 3"	52	39	69	60

// 270LE SHOWN IN COFFEE DECOR

LE MODELS ONLY AVAILABLE IN COFFEE DECOR



## Springdale

TRAVEL IN COMFORT, ENJOY THE TRIP, IT'S A WAY OF LIFE...

# 38's



**38BH**

WEIGHT: 8729 LENGTH: 38' 11"

### TOP 5 FEATURES

- 18 CU. FT. RESIDENTIAL REFRIGERATOR
- 10 GALLON GAS/ELECTRIC DSI WATER HEATER
- BEDROOM SLIDE
- 50 AMP SERVICE WIRED & BRACED FOR 2ND AC
- HEATED & ENCLOSED UNDERBELLY



**38FL**

WEIGHT: 8660 LENGTH: 38' 11"



**38FQ**

WEIGHT: 8625 LENGTH: 38' 11"

MODEL	SHIPPING WEIGHT	CARRYING CAPACITY	HITCH WEIGHT	EXT LENGTH*	EXT HEIGHT	FRESH WATER	WASTE WATER	GREY WATER	LPB
38BH	8729	2426	995	38' 11"	11' 4"	56	39	69	60
38FL	8660	2445	945	38' 11"	11' 4"	56	39	69	60
38FQ	8625	2510	975	38' 11"	11' 4"	56	39	69	60



**Springdale**  
**VAULTED CEILING**  
RAISING THE BAR ON INNOVATION  
**6'10"**

// 311RE SHOWN IN COFFEE DECOR



8 // 303BH SHOWN IN PEBBLE DECOR





// 311RE BEDROOM



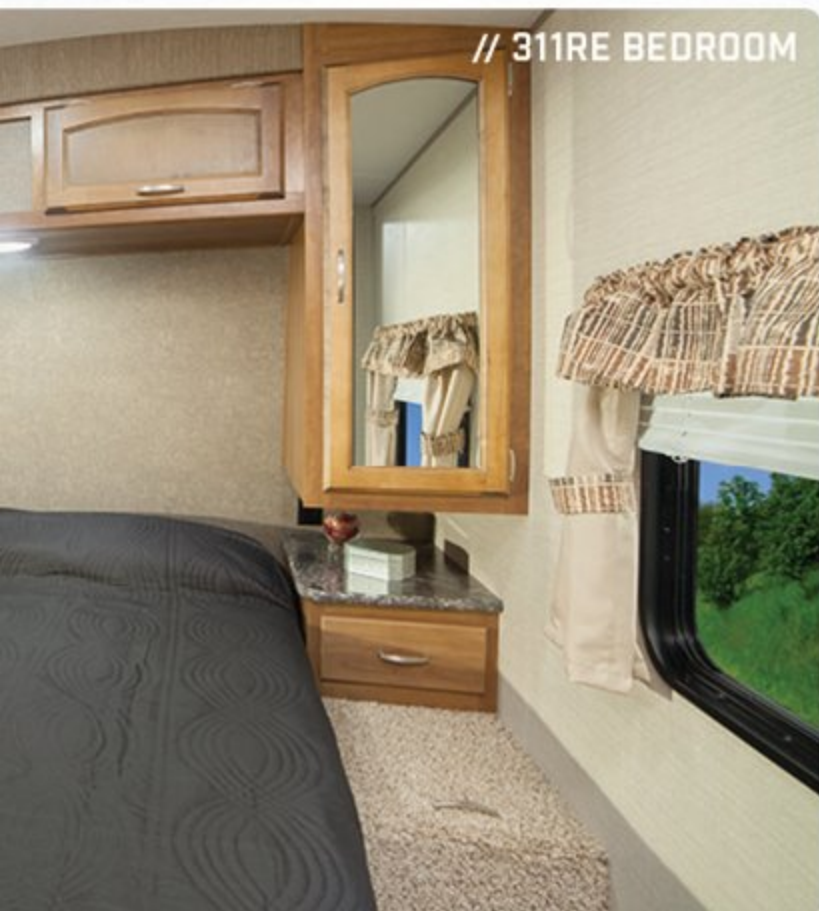
// 303BH BUNKROOM



// 311RE BATHROOM



// 303BH OUTDOOR KITCHEN



// 303BH KITCHEN

# FEATURES



1



2



3



4



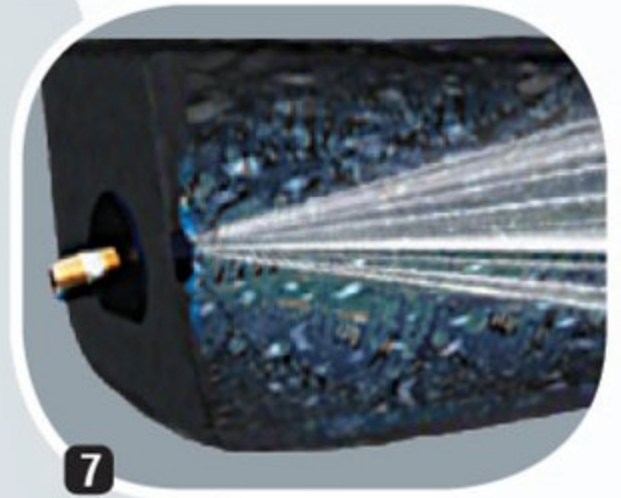
5



6

## TOP SELLING FEATURES

- |  |  |
|--|--|
| <ul style="list-style-type: none"> <li>1. PLEATED NIGHT SHADES W/ ALUMINUM PULL DOWN HANDLE</li> <li>2. LED TV W/ BLUETOOTH &amp; DVD SYSTEM</li> <li>3. DIGITAL CHARGING STATION</li> <li>4. HEATED/ENCLOSED UNDERBELLY</li> <li>5. FRICTION HINGE DOOR</li> <li>6. TRI-FOLD SLEEPER SOFA</li> <li>7. BLACK TANK FLUSH</li> </ul> | <ul style="list-style-type: none"> <li>8. FULL EXTENSION BALL BEARING DRAWER GUIDES</li> <li>9. VAULTED CEILING</li> <li>10. ALUMINUM WHEELS</li> <li>11. DO-MORE DINETTE TABLE</li> <li>12. FULL BODY GRAPHICS</li> <li>13. 7 CU. FT. STAINLESS STEEL REFRIGERATOR W/ BLUE LED LIGHT</li> </ul> |
|--|--|



7



8



9



10



11



12



13

- 1 Continuous Steel I-Beam Powder Coated Frame
- 2 Walkable Crowned Roof
- 3 Hurricane Strap Reinforced Structure
- 4 Oversized Pass Through Storage
- 5 Diamond Plate Front Protector
- 6 One Piece Alpha-Ply Roof
- 7 3/8" Walkable Roof Decking
- 8 Dual 30 Lb. LP Bottles
- 9 Crowned Slide Box
- 10 Electric Awning
- 11 Residential Batten Insulation Throughout
- 12 Dual Battery Storage Tray
- 13 XL Entry Assist Handle
- 14 5/8" Seamless Floor Decking
- 15 Aluminum Wheels [Opt.]
- 16 Triple Stage Slide Room Seals
- 17 Aluminum Triple Entry Steps
- 18 2x3 Floor Joists 12" on Center
- 19 Wide Stance Axles
- 20 Radius Skirting
- 21 E-Z Lube Axles
- 22 0.24 and 0.30 Aluminum Baked Enamel Siding
- 23 Black Framed, Tinted Safety Glass Windows
- 24 Rain Gutter with Extended Down Spouts
- 25 Fender Skirts
- 26 13,500 BTU Ducted Air Conditioner [Opt. 15K]
- 27 Bumper Sewer Hose Storage
- 28 Exterior TV Mount
- 29 [4] Stabilizer Jacks [Opt.]
- 30 Electric Tongue Jack [Opt.]



# FIFTH WHEEL FLOORPLANS



**253FWRE**

WEIGHT: 8120 LENGTH: 31' 11"



**262FWRK**

WEIGHT: 7235 LENGTH: 28' 8"



**285FWRL**

WEIGHT: 7600 LENGTH: 32' 5"



**278FWRL**

WEIGHT: 8065 LENGTH: 31' 0"



**286FWBH**

WEIGHT: 7727 LENGTH: 32' 8"

**TOP SELLING** 50 AMP SERVICE • HEATED / ENCLOSED UNDERBELLY • LAMINATED SIDEWALLS



**NEW FRONT CAP**



**WARDROBE SLIDE**



**DOUBLE ENTRY BATH**



**NEW FRAME**

## ADVENTURE PACKAGE

- 5 FUNCTION REMOTE
- REAR POWER STABILIZER JACKS
- LED INTERIOR LIGHTING
- ALUMINUM ENTRY STEPS
- UPGRADED FAUCET

MODEL	SHIPPING WEIGHT	CARRYING CAPACITY	HITCH WEIGHT	EXT LENGTH*	EXT HEIGHT	FRESH WATER	WASTE WATER	GREY WATER	LPG
253FWRE	8120	1840	1160	31' 11"	11' 10"	52	42	74	60
262FWRK	7235	2750	1185	28' 8"	11' 10"	52	39	78	60
278FWRL	8065	2160	1425	31' 0"	11' 10"	52	39	39	60
285FWRL	8040	1995	1235	33' 3"	11' 10"	52	39	39	60
286FWBH	7727	2463	1390	32' 8"	11' 4"	55	42	76	60

// 262FWRK SHOWN IN COFFEE DECOR



// 262FWRK SHOWN IN COFFEE DECOR



// 262FWRK BEDROOM



// 278FWRL SHOWN W/ FREE STANDING DINETTE



// 278FWRL SHOWN IN PEBBLE DECOR

# SUMMERLAND SERIES



**1890FL**

WEIGHT: 4147 LENGTH: 23' 7"



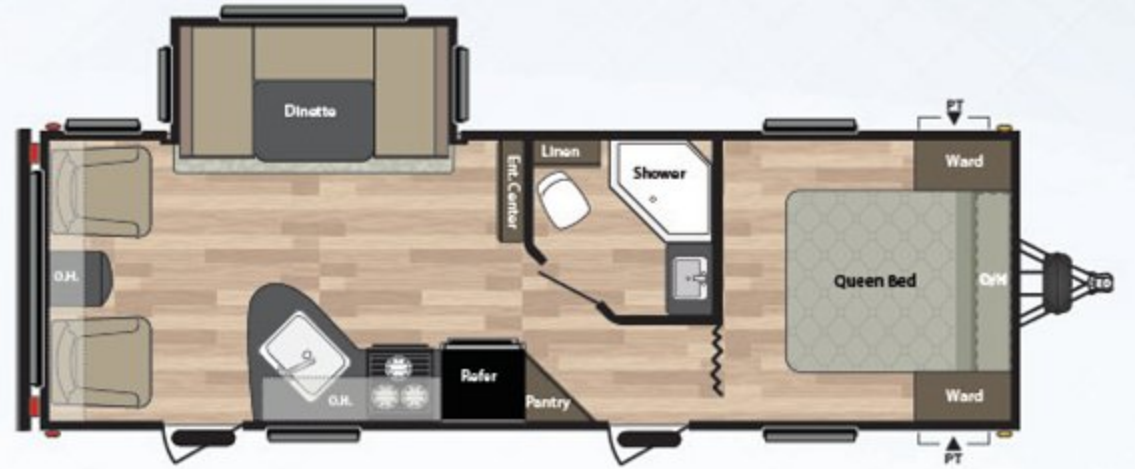
**2020QB**

WEIGHT: 4291 LENGTH: 24' 10"



**2450RB**

WEIGHT: 5065 LENGTH: 27' 11"



**2570RL**

WEIGHT: 5954 LENGTH: 29' 8"



**2600TB**

WEIGHT: 4829 LENGTH: 28' 10"



**2660RL**

WEIGHT: 5960 LENGTH: 28' 11"



## SUMMERLAND SERIES PACKAGE



# SUMMERLAND SERIES FLOORPLANS



**2670BH**

WEIGHT: 5827 LENGTH: 28' 11"



**2720BH**

WEIGHT: 6090 LENGTH: 30' 0"



**2820BH**

WEIGHT: 6484 LENGTH: 32' 1"



**2980BH**

WEIGHT: 6408 LENGTH: 32' 7"



**3030BH**

WEIGHT: 7630 LENGTH: 34' 11"

## STAY IN TOUCH

Springdale & Springdale Summerland Series are always just a touch away. You'll find 360 virtual tours, location of your nearest dealer, photos, videos and all of the latest information about Springdale & Springdale Summerland Series. Everything you need can be accessed anytime, day or night, from home or on the road. You can also find us on the Keystone RV Facebook.

[KEYSTONERV.COM/SPRINGDALE](http://KEYSTONERV.COM/SPRINGDALE)



MODEL	SHIPPING WEIGHT	CARRYING CAPACITY	HITCH WEIGHT	EXT LENGTH*	EXT HEIGHT	FRESH WATER	WASTE WATER	GREY WATER	LPG
1890FL	4147	2263	410	23' 7"	10' 6"	52	32	42	40
2020QB	4291	2209	515	24' 10"	10' 6"	52	34	42	40
2450RB	5065	2535	600	27' 11"	10' 6"	52	30	39	40
2570RL	5954	1661	615	29' 8"	10' 6"	52	42	34	40
2600TB	4824	2686	510	28' 10"	10' 6"	52	42	34	40
2670BH	5827	1818	645	28' 11"	10' 11"	52	32	42	40
2660RL	5960	1735	695	28' 11"	10' 11"	52	39	30	40
2720BH	6090	1740	830	30' 0"	10' 6"	52	39	39	40
2820BH	6484	2116	690	32' 1"	11' 3"	52	32	84	40
2980BH	6408	3107	715	32' 7"	10' 11"	52	32	42	40
3030BH	7630	2100	930	34' 11"	10' 11"	52	32	42	40

DISCLAIMER: Product information is as accurate as possible as of the date of publication of this brochure. All features, floor plans, and specifications in this brochure are subject to change without notice. Please also consult Keystone's web site at [www.keystonerv.com](http://www.keystonerv.com) for more current product information and specifications. Tow Vehicle Disclaimer: CAUTION: Owners of Keystone recreational vehicles are solely responsible for the selection and proper use of tow vehicles. All customers should consult with a motor vehicle manufacturer or their dealer concerning the purchase and use of suitable tow vehicles for Keystone products. Keystone disclaims any liability or damages suffered as a result of the selection, operation, use or misuse of a tow vehicle. KEYSTONE'S LIMITED WARRANTY DOES NOT COVER DAMAGE TO THE RECREATIONAL VEHICLE OR THE TOW VEHICLE AS A RESULT OF THE SELECTION, OPERATION, USE OR MISUSE OF THE TOW VEHICLE. \*Length is defined as the distance from the centerline of hitch pin/coupler to rear bumper of trailer. 01.16

# SUMMERLAND SERIES INTERIORS





# SUMMERLAND SERIES SINGLE AXLES FLOORPLANS

## SUMMERLAND SERIES *Mini*

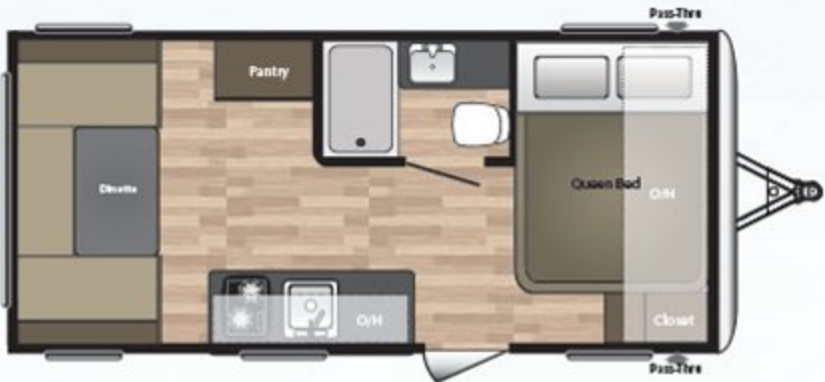
### TOP 5 SELLING FEATURES

- 8' WIDE
- 78" INTERIOR HEIGHT
- GAS STRUTTED DOOR
- 3 CU. FT. GAS/ELECTRIC REFRIGERATOR
- SEAMLESS FLOORING



**1700FQ**

WEIGHT: 3280 LENGTH: 21' 5"

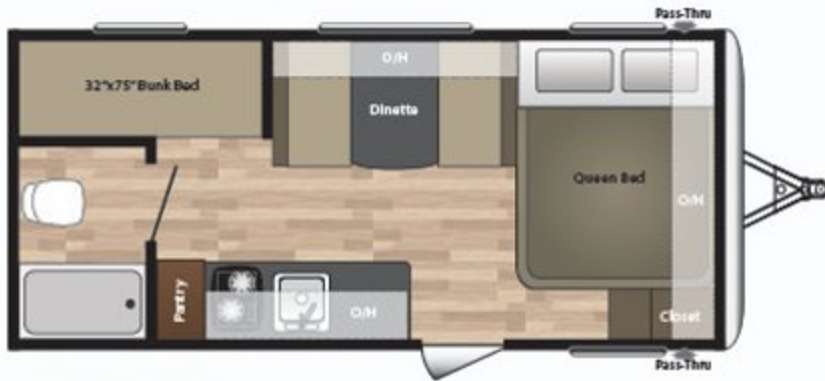


**1750RD**

WEIGHT: 3225 LENGTH: 21' 5"



// 1700FQ



**1800BH**

WEIGHT: 3195 LENGTH: 21' 5"



// 1800BH



**1850FL**

WEIGHT: 3335 LENGTH: 21' 5"

MODEL	SHIPPING WEIGHT	CARRYING CAPACITY	HITCH WEIGHT	EXTERIOR LENGTH*	EXTERIOR HEIGHT	FRESH WATER	WASTE WATER	GREY WATER	LPG
1700FQ	3280	720	490	21' 5"	10' 6"	27	30	30	20
1750RD	3225	775	465	21' 5"	10' 6"	27	30	30	20
1800BH	3195	805	440	21' 5"	10' 6"	27	30	30	20
1850FL	3335	665	495	21' 5"	10' 6"	27	30	30	20

# DECOR OPTIONS / AWARDS



COFFEE DECOR



PEBBLE DECOR



SEA MIST DECOR



## SPRINGDALE HAS EARNED THE RVDA DEALER SATISFACTION INDEX AWARD

## STAY IN TOUCH

Springdale & Summerland are always just a touch away. You'll find 360 virtual tours, location of your nearest dealer, photos, videos and all of the latest information about Springdale & Summerland. Everything you need can be accessed anytime, day or night, from home or on the road. You can also find us on the Keystone RV Facebook.

### Slide Rooms

Press slide room button then press right arrow to bring slide out, press left arrow to bring slide in



### Power Awning

Press awning button then press right arrow to awning out, press left arrow to bring awning in



### Tight Spaces?

Set up camp quickly and easily with Quick Camp™!



### Stabilizer Jacks

Press stabilizer button then press down arrow to bring jacks down, press up arrow to bring jacks up



### Awning Light

Press light button to turn light on and off



### Can't See?

Activate your lights with Quick Camp™!



	SPRINGDALE TT	SPRINGDALE FW	SUMMERLAND TT	MINI
<b>EXTERIOR</b>				
Laminated Fiberglass Sidewalls	-	S	-	-
Electric Adjustable Front Landing Gear	-	S	-	-
Diamond Plate	S	-	S	S
Adjustable Power Awning	S	S	S	-
Manual Patio awning	-	-	-	S
Outside 110 receptacle	S	S	S	S
Aluminum Wheels	0	0	0	-
XL Entry Assist Handle	S	S	-	-
Arctic Package	S	S	S	-
Powder Coated I-Beam Frame	S	S	S	S
Spread Axle (Models w/Slides)	S	S	-	-
Easy Ultralube Axles	S	S	S	S
Full Length Outriggers on Frame	S	S	S	S
Dual Battery Rack	S	S	S	-
Two 30 lb. LP Bottles	S	S	-	-
2 Exterior Speakers	S	S	S	S
TV Antenna with Booster	S	S	S	S
Oversized Pass Thru Storage	S	S	S	S
Hurricane Straps Reinforced Structure	S	S	S	S
Four heavy duty stabilizer jacks	0	-	0	0
Two Heavy Duty Stabilizer Jacks	-	S	-	S
Radial Tires	S	S	S	S
Cambered chassis	S	S	S	S
96" Exterior width	S	S	S	S
Exterior Shower	S	S	0	-
Spare Tire and Carrier	0	0	0	0
E-Z Open Entry Step	S	S	S	S
50 Amp Service w/Detachable Cord (Select Models)	S	S	-	-
Black Tank Flush	S	S	-	-
<b>INTERIOR</b>				
Mini Blinds	-	-	S	S
Tri-Fold Sleeper Sofa	0	0	-	-
Jackknife Sofa Bed	-	-	S	S
Large Medicine Cabinet	S	S	S	S
Pleated Night Shades in Living Area	S	S	-	-
Full Strutted Storage under Master Bed	S	S	-	-
Nightstand w/Drawer in Bedroom	S	S	-	-
29" TV (39" on some models)	0	0	0	-
2 Interior Speakers	-	-	S	S
AM/FM CD w/MP3 Stereo	-	-	S	S
AM/FM Bluetooth CD/DVD Ent. System	S	S	-	-
Residential Microwave	S	S	S	S
Monitor Panel	S	S	S	S
7 Cu. Ft. Refrigerator	S	S	-	-
6 Cu. Ft. Refrigerator	-	-	S	-
Residential Refrigerator (38BH, 38FL, 38FQ only)	S	-	-	-

	SPRINGDALE TT	SPRINGDALE FW	SUMMERLAND TT	MINI
3 Cu. Ft. Gas/Electric Refer	-	-	-	S
Ball Bearing Drawer Guides	S	S	S	S
Reversible Dinette Cushions	S	S	S	S
High Rise Kitchen Faucet	S	S	S	S
High Impact Acrylic Sink	S	S	S	S
18" Oven w/3 Burner Cooktop	S	S	S	-
2 Burner Cooktop	-	-	-	S
Freestanding Dinette	0	0	-	-
"Do More Dinette" Table	S	S	-	-
12 Volt 55 Amp Converter	S	S	S	-
15,000 BTU Air Conditioner	0	0	0	-
13,500 BTU Air Conditioner	S	S	S	0
8K BTU Air Conditioner	-	-	-	S
Forced Air DSI 30K BTU Furnace w/Thermostat (Ducted most models)	S	S	S	-
20K BTU Furnace	-	-	-	S
6 Gal. Gas/Electric DSI Water Heater	S	S	-	-
Skylight Over Tub/Shower	S	S	-	-
Flex Pex Tubing with 10 Year Warranty	S	S	S	S
82" Vaulted Ceiling	S	-	-	-
Tub Surround	S	S	0	-
Foot Flush Toilet	S	S	S	S
RG6 Cable and Satellite Wiring	S	S	0	S
2x3 Floor Construction 12" OC w/5/8th Decking	S	S	S	S
16" on Center Raised Roof Truss System	S	S	S	S
4 1/2" Crowned Roof	S	S	S	S
16" on Center Side Walls	S	S	S	S
R-7 Insulation-Floor, Roof, Walls	S	S	S	S
<b>SUMMER PACKAGE *</b>	-	-	0	S
<b>SAFETY</b>				
Fire Extinguisher	S	S	S	S
Smoke Detector	S	S	S	S
LP Detector	S	S	S	S
CO Detector	S	S	S	S
Safety Chains	S	S	S	S
Emergency Brake-a-way switch	S	S	S	S

» **SUMMERLAND SUMMER PACKAGE \***

- Outdoor Shower
- 6 Gal. Gas DSI Water Heater
- RG6 Cable and Satellite Wiring
- 2 - 20# LP Tanks w/Cover
- Tub Surround

**SPRINGDALE TT** = SPRINGDALE TRAVEL TRAILERS  
**SPRINGDALE FW** = SPRINGDALE FIFTH WHEELS  
**SUMMERLAND TT** = SUMMERLAND SERIES TRAVEL TRAILERS  
**MINI** = SUMMERLAND SINGLE AXLE TRAVEL TRAILERS

S STANDARD | 0 OPTIONAL | - NOT AVAILABLE

# Springdale



TRAVEL TRAILERS • FIFTH WHEELS • SINGLE AXLE TRAVEL TRAILERS



## PURCHASING YOUR RV LOCALLY

It's up to you where you purchase your new Springdale, but may we suggest your local dealer? Not only does it help your local economy and provide jobs, but it will also give you an opportunity to develop a service relationship with someone that will come to know you and your coach. Congratulations on finding the best built, best equipped and best value in the industry. Happy travels!

YOUR LOCAL DEALER IS:



FEBRUARY 2016



**Keystone RV  
Company**

WWW.KEYSTONERV.COM  
574.535.2100 • 2642 HACKBERRY DRIVE  
P.O. BOX 2000 • GOSHEN, IN 46527



Go RVing.

DISCLAIMER: Product information is as accurate as possible as of the date of publication of this brochure. All features, floor plans, and specifications in this brochure are subject to change without notice. Please also consult Keystone's web site at [www.keystonerv.com](http://www.keystonerv.com) for more current product information and specifications. Tow Vehicle Disclaimer. CAUTION: Owners of Keystone recreational vehicles are solely responsible for the selection and proper use of tow vehicles. All customers should consult with a motor vehicle manufacturer or their dealer concerning the purchase and use of suitable tow vehicles for Keystone products. Keystone disclaims any liability or damages suffered as a result of the selection, operation, use or misuse of a tow vehicle. KEYSTONE'S LIMITED WARRANTY DOES NOT COVER DAMAGE TO THE RECREATIONAL VEHICLE OR THE TOW VEHICLE AS A RESULT OF THE SELECTION, OPERATION, USE OR MISUSE OF THE TOW VEHICLE. \*Length is defined as the distance from the centerline of hitch pin/coupler to rear bumper of trailer. 01.16

A BETTER WAY TO CAMP | [WWW.KEYSTONERV.COM/SPRINGDALE](http://WWW.KEYSTONERV.COM/SPRINGDALE)