



# SPORTSMEN® Show Stopper

## Travel Trailers



S314BHSS shown in early 2016 Cocoa décor

### Sportsmen Show Stopper

Travel Trailers	S190SBSS	S242SBHSS	S270RKSS	S280BHSS	S281RLSS	S291IKSS	S314BHSS	S314BHSS
UVW (Unloaded Vehicle Weight)*	4,510	4,480	5,110	5,450	5,530	6,080	6,010	6,210
Dry Hitch Weight*	520	540	500	680	630	840	690	600
Dry Axle Weight*	3,990	3,940	4,610	4,770	4,900	5,240	5,320	5,610
NCC (Net Carrying Capacity)	1,490	1,520	1,890	1,550	1,470	2,720	1,990	1,790
GVWR	6,000	6,000	7,000	7,000	7,000	8,800	8,000	8,000
Interior Height	78"	78"	78"	78"	78"	78"	78"	78"
Exterior Height w/ A/C	10' 11"	10' 1"	10' 7"	10' 8"	10' 7"	10' 11"	11'	11'
Exterior Width	96"	96"	96"	96"	96"	96"	96"	96"
Exterior Length	24' 2"	26' 6"	28' 8"	30' 9"	29' 9"	32' 4"	32' 10"	32' 10"
Refrigerator (cu. feet)	6	6	6	6	6	6	6	6
Water Heater Cap. (gal. G/E w/DSI)	6	6	6	6	6	6	6	6
Fresh Water Cap. (gal.)	40	40	40	40	40	40	40	40
Waste Water Cap. (gal.)	32	32	32	32	32	32	32	32
Gray Water Cap. (gal.)	32	32	32	32	32	32	32	32
LP Gas Cap. (lbs.)	40	40	40	40	40	40	40	40
Furnace BTUs (1,000s)	20	20	25	25	25	25	25	25
Tire Size	14"	14"	14"	14"	14"	15"	15"	15"
Awning	15'	18'	16'	15'	15'	16'	16'	16'

\*This weight reflects the rolling average unit weight for each model. Your trailer weight will vary according to optional equipment.

### Sportsmen Show Stopper LE

Travel Trailers	S242SBHSS	S270RKSS	S280BHSS	S281RLSS	S291IKSS	S314BHSS	S314BHSS
UVW (Unloaded Vehicle Weight)*	4,628	5,070	5,290	5,410	6,170	6,210	6,240
Dry Hitch Weight*	579	500	710	670	880	650	630
Dry Axle Weight*	4,049	4,570	4,580	4,740	5,290	5,560	5,610
NCC (Net Carrying Capacity)	1,372	1,930	1,710	1,590	2,630	1,790	1,760
GVWR	6,000	7,000	7,000	7,000	8,800	8,000	8,000
Interior Height	78"	78"	78"	78"	78"	78"	78"
Exterior Height w/ A/C	10' 1"	10' 8"	10' 7"	10' 7"	10' 7"	11'	11'
Exterior Width	96"	96"	96"	96"	96"	96"	96"
Exterior Length	26' 9"	28' 6"	30' 9"	29' 9"	32' 4"	32' 10"	32' 10"
Refrigerator (cu. feet)	6	6	6	6	6	6	6
Water Heater Cap. (gal. G/E w/DSI)	6	6	6	6	6	6	6
Fresh Water Cap. (gal.)	38	38	38	38	38	40	40
Waste Water Cap. (gal.)	32	32	32	32	38	32	32
Gray Water Cap. (gal.)	32	32	32	32	38	32	32
LP Gas Cap. (lbs.)	40	40	40	40	40	40	40
Furnace BTUs (1,000s)	20	25	25	25	25	25	25
Tire Size	14"	14"	14"	14"	15"	15"	15"
Awning	18'	16'	15'	15'	16'	16'	16'

\*This weight reflects the rolling average unit weight for each model. Your trailer weight will vary according to optional equipment.





# SPORTSMEN® Show Stopper

## Travel Trailers



S314BHKSS shown in early 2016 Cocoa décor

### Sportsmen Show Stopper

Travel Trailers	S190SRBSS	S242SBHSS	S270RKSS	S280BHSS	S281RLSS	S291IKSS	S314BHSS	S314BHKSS
UVW (Unloaded Vehicle Weight)*	4,510	4,480	5,110	5,450	5,530	6,080	6,010	6,210
Dry Hitch Weight*	520	540	500	680	630	840	690	600
Dry Axle Weight*	3,990	3,940	4,610	4,770	4,900	5,240	5,320	5,610
NCC (Net Carrying Capacity)	1,490	1,520	1,890	1,550	1,470	2,720	1,990	1,790
GVWR	6,000	6,000	7,000	7,000	7,000	8,800	8,000	8,000
Interior Height	78"	78"	78"	78"	78"	78"	78"	78"
Exterior Height w/ A/C	10' 11"	10' 1"	10' 7"	10' 8"	10' 7"	10' 11"	11'	11'
Exterior Width	96"	96"	96"	96"	96"	96"	96"	96"
Exterior Length	24' 2"	26' 6"	28' 8"	30' 9"	29' 9"	32' 4"	32' 10"	32' 10"
Refrigerator (cu. feet)	6	6	6	6	6	6	6	6
Water Heater Cap. (gal. G/E w/DSI)	6	6	6	6	6	6	6	6
Fresh Water Cap. (gal.)	40	40	40	40	40	40	40	40
Waste Water Cap. (gal.)	32	32	32	32	32	32	32	32
Gray Water Cap. (gal.)	32	32	32	32	32	32	32	32
LP Gas Cap. (lbs.)	40	40	40	40	40	40	40	40
Furnace BTUs (1,000s)	20	20	25	25	25	25	25	25
Tire Size	14"	14"	14"	14"	14"	15"	15"	15"
Awning	15'	18'	16'	15'	15'	16'	16'	16'

\*This weight reflects the rolling average unit weight for each model. Your trailer weight will vary according to optional equipment.

### Sportsmen Show Stopper LE

Travel Trailers	S242SBHSS	S270RKSS	S280BHSS	S281RLSS	S291IKSS	S314BHSS	S314BHKSS
UVW (Unloaded Vehicle Weight)*	4,628	5,070	5,290	5,410	6,170	6,210	6,240
Dry Hitch Weight*	579	500	710	670	880	650	630
Dry Axle Weight*	4,049	4,570	4,580	4,740	5,290	5,560	5,610
NCC (Net Carrying Capacity)	1,372	1,930	1,710	1,590	2,630	1,790	1,760
GVWR	6,000	7,000	7,000	7,000	8,800	8,000	8,000
Interior Height	78"	78"	78"	78"	78"	78"	78"
Exterior Height w/ A/C	10' 1"	10' 8"	10' 7"	10' 7"	10' 7"	11'	11'
Exterior Width	96"	96"	96"	96"	96"	96"	96"
Exterior Length	26' 9"	28' 6"	30' 9"	29' 9"	32' 4"	32' 10"	32' 10"
Refrigerator (cu. feet)	6	6	6	6	6	6	6
Water Heater Cap. (gal. G/E w/DSI)	6	6	6	6	6	6	6
Fresh Water Cap. (gal.)	38	38	38	38	38	40	40
Waste Water Cap. (gal.)	32	32	32	32	38	32	32
Gray Water Cap. (gal.)	32	32	32	32	38	32	32
LP Gas Cap. (lbs.)	40	40	40	40	40	40	40
Furnace BTUs (1,000s)	20	25	25	25	25	25	25
Tire Size	14"	14"	14"	14"	15"	15"	15"
Awning	18'	16'	15'	15'	16'	16'	16'

\*This weight reflects the rolling average unit weight for each model. Your trailer weight will vary according to optional equipment.



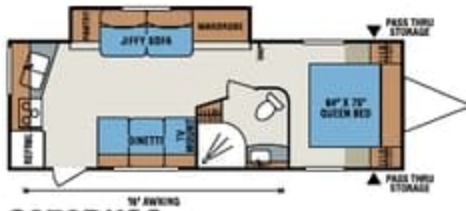
# Sportsmen Show Stopper & Show Stopper LE



S190SRBSS



S242SBHSS



S270RKSS



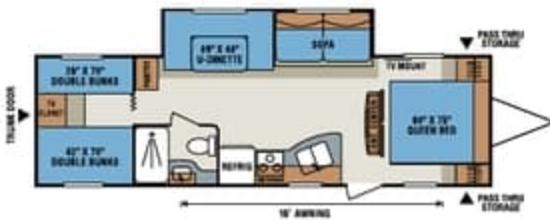
S280BHSS



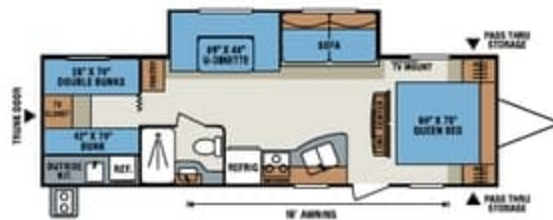
S281RLSS



S291IKSS



S314BHSS



S314BKSS

2016  
Décor



Rustic

## Standards

- 3/8" Fully Walk On Roof w/ SuperFlex Roofing Material
- 1 Piece Seamless Roof
- 4 Stabilizer Jacks
- 6 Cubic Foot Refrigerator
- 6 Gallon Gas/Electric Water Heater
- 20 lb. Gas Bottles
- 30 Amp Service
- 13,500 BTU A/C
- Acrylic Sink w/High-Rise Faucet
- AM/FM/CD Player
- Awning w/Drip Rail & Spouts

- Built-In Medicine Cabinet w/Mirror in Bath
- Cable Hook Up
- Diamond Plate Rock Guard
- Extra Large Radius Baggage Doors
- Fiberglass Exterior (N/A on LE)
- Large Overhead Cabinets
- LED Interior Lighting
- Linoleum From Front to Rear
- Microwave w/Turntable
- Mini Blinds
- Monitor Panel
- Oven

- Patio Door Light
- Power Vent in Bath
- Queen Mattress
- R7 Insulation
- Radius Entry Door
- Radius Truss Roof Rafters
- Range Hood w/12V Light & Exhaust Fan
- Rear Bumper w/Sewer Hose Storage
- Reversible Quilted Comforter
- Roller Ball Bearing Drawer Guides
- Tinted Windows

- Tub Surround
- TV Antenna w/Booster
- Water Heater Bypass Kit

## Options

- Exterior Speakers
- Lighted Power Tongue Jack
- Multi-Directional Lighted Power Awning (Forced Option on S291IKSS)
- Outside Kitchen (Where Available)
- Spare Tire/Carrier
- Stereo w/DVD & Bluetooth



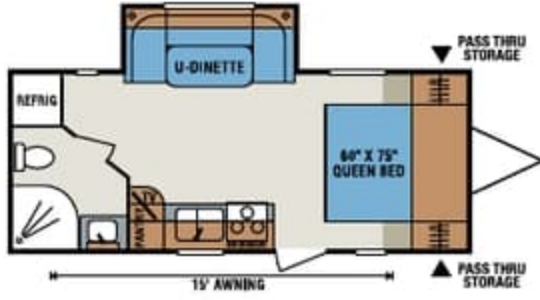
985 N 900 W • Shipshewana, IN 46565  
E-mail [kz@kz-rv.com](mailto:kz@kz-rv.com) • [www.kz-rv.com](http://www.kz-rv.com)

*Due to continual research and advances, manufacturer reserves the right to change specifications, design, price and equipment without notice, and assumes no responsibility for any error in this literature. Some items shown are not included as standard or optional equipment.*

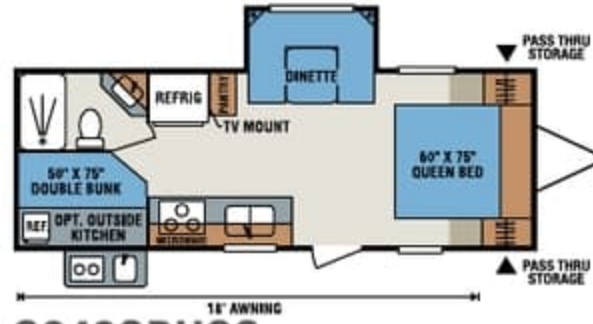
Dealer:



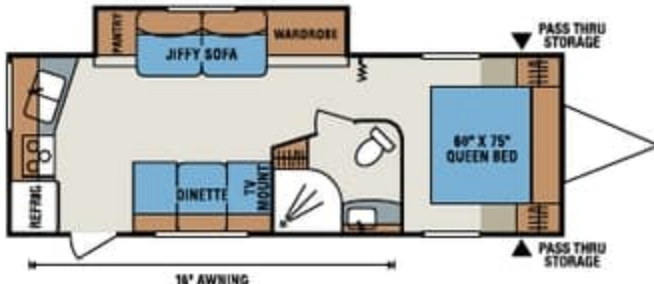
# Sportsmen Show Stopper & Show Stopper LE



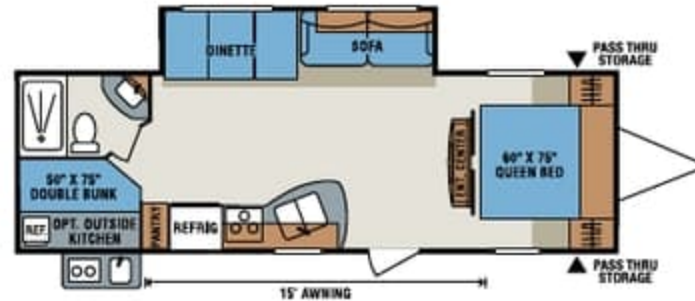
**S190SRBSS**



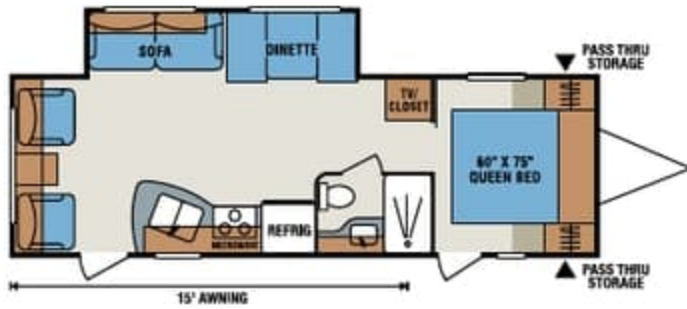
**S242SBHSS**



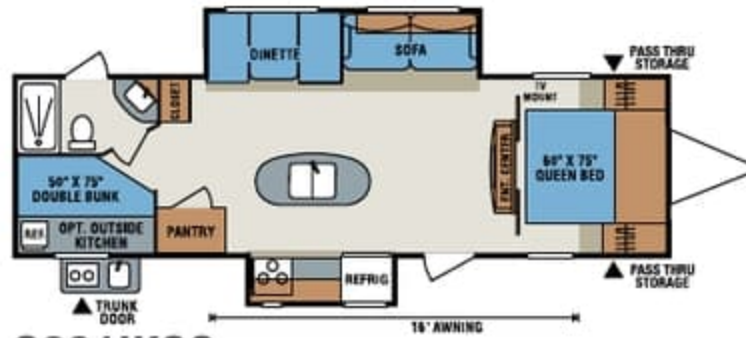
**S270RKSS**



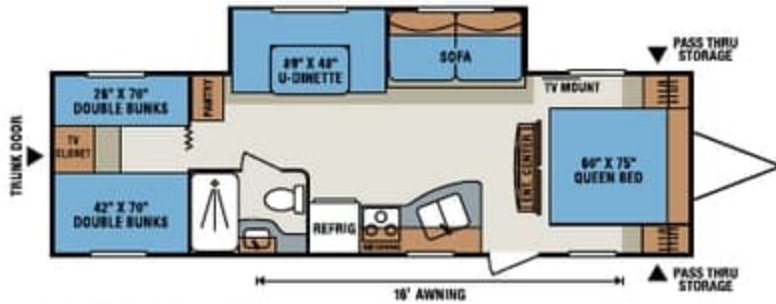
**S280BHSS**



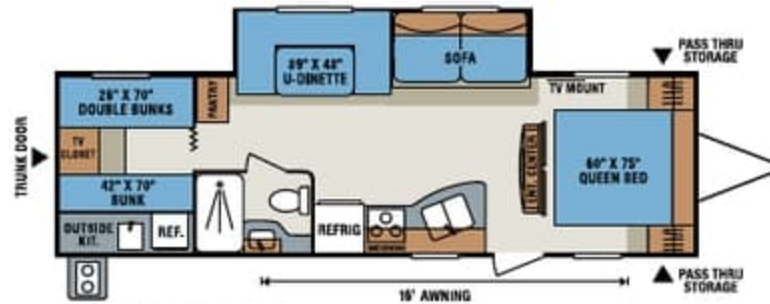
**S281RLSS**



**S291IKSS**



**S314BHSS**



**S314BHKSS**

**2016  
Décor**



*Rustic*

## Standards

- 3/8" Fully Walk On Roof w/ SuperFlex Roofing Material
- 1 Piece Seamless Roof
- 4 Stabilizer Jacks
- 6 Cubic Foot Refrigerator
- 6 Gallon Gas/Electric Water Heater
- 20 lb. Gas Bottles
- 30 Amp Service
- 13,500 BTU A/C
- Acrylic Sink w/High-Rise Faucet
- AM/FM/CD Player
- Awning w/Drip Rail & Spouts

- Built-In Medicine Cabinet w/Mirror in Bath
- Cable Hook Up
- Diamond Plate Rock Guard
- Extra Large Radius Baggage Doors
- Fiberglass Exterior (N/A on LE)
- Large Overhead Cabinets
- LED Interior Lighting
- Linoleum From Front to Rear
- Microwave w/Turntable
- Mini Blinds
- Monitor Panel
- Oven

- Patio Door Light
- Power Vent in Bath
- Queen Mattress
- R7 Insulation
- Radius Entry Door
- Radius Truss Roof Rafters
- Range Hood w/12V Light & Exhaust Fan
- Rear Bumper w/Sewer Hose Storage
- Reversible Quilted Comforter
- Roller Ball Bearing Drawer Guides
- Tinted Windows

- Tub Surround
- TV Antenna w/Booster
- Water Heater Bypass Kit

## Options

- Exterior Speakers
- Lighted Power Tongue Jack
- Multi-Directional Lighted Power Awning (Forced Option on S291IKSS)
- Outside Kitchen (Where Available)
- Spare Tire/Carrier
- Stereo w/DVD & Bluetooth



985 N 900 W • Shipshewana, IN 46565  
E-mail [kz@kz-rv.com](mailto:kz@kz-rv.com) • [www.kz-rv.com](http://www.kz-rv.com)

*Due to continual research and advances, manufacturer reserves the right to change specifications, design, price and equipment without notice, and assumes no responsibility for any error in this literature. Some items shown are not included as standard or optional equipment.*

Dealer: