

VENOM



LUXURY
Fifth Wheel
Toy Haulers



QUALITY . RELIABILITY . INNOVATION
kz-rv.com

VENOM

The all new Venom lightweight, high-profile, wide body toy hauler is by far the most exciting towable on the market today. Venom was designed with the discerning consumer in mind, offering not only all the traditional features buyers expect, but many luxury items that will attract the high-end fifth wheel owner as well.

(Right) Venom is unlike any toy hauler you've ever experienced. Plush furniture, residential cabinets with large grab handles and hidden hinges, decorative LED lighting, full stainless steel appliance package, including a 30" residential microwave, and a self-illuminating pantry are just some of the features you'll find in the 3911TK (shown with optional day/night roller shades and 18 CU FT refrigerator).

(Below) Cross conversational seating and a TV with swing bracket make for easy viewing. The 3911TK comes standard with free-standing table and chairs, and is shown here with optional theater seating, upgraded entertainment system (LED TV/DVD/sound bar & subwoofer), and an optional fireplace.

V3911TK • Nighthawk décor





Venom's master bedrooms are luxurious, and some are offered with an optional king bed. Designer bedspreads and pillows, dual, directional reading lights with dimmers, and large, deep closets with washer/dryer prep complete the space.



V3911TK . Nighthawk décor

The 3911TK offers a 48" by 30" one-piece shower with seat and sliding glass doors, stainless steel sink and faucet.



V4020DQ - Nighthawk décor

Venom's 4020DQ front living room offers dual sofas, with one even converting into a bed! Two designer sofas make for easy conversation and comfortable good looks. Wood slat window shades are standard throughout, as is generous storage (shown with optional fireplace).



When not in use in the 20' garage, the 4020QB queen bed can be lowered in the main bedroom.



The 4020DQ bedroom wall can be raised to allow for a 20' garage, or lowered to provide a nicely-sized private bedroom.



Additional HappiJac® electric beds are available for extra sleeping space. Dependable E-Track tie-down system comes standard in every Venom.

V4020DQ



V4013TK . Nighthawk décor

Venom offers plenty of storage opportunities throughout the interior. Kitchens are designed with stainless steel appliances, and a 60/40 stainless steel sink with high-arching faucet. The 4013TK includes pullout trash and dual pantries, and is shown with optional dual-interior slow-rise roller shades.



The 4013TK provides individual pedestal tables for dining, serious TV watching, or working on hobbies or your laptop. Triple theater recliners with cupholders make Venom the most comfortable toy hauler available!



V4013TK

The spacious 4013TK bath boasts a large shower with glass doors, medicine cabinet, linen closet and towel bar and loop.

Construction Standards

- 101" Wide Body Construction
- 6-Sided aluminum frame, including welded aluminum fore & aft floor joists, sidewall framing, & roof trusses
- Extra Reinforced Heavy-Duty Front Fiberglass Cap
- Radius Aerodynamic Front Cap
- 2" x 3" Fully-Welded Aluminum Floor Framing
- 2" x 2" Fully-Welded Aluminum Sidewall Framing
- 5" Welded Aluminum Roof Trusses
- Lippert® Hydraulic Slide System w/Selector Valves
- 12" Powder-Coated Steel I-Beam w/Drop Frame (160 SQ FT Pass-Thru Storage)
- Lamilux 4000® High-Gloss Fiberglass Sidewalls
- All Weather Insulation Package to R38 (roof, floor, garage floor end caps, holding tanks)
- Double Insulated & Heated Holding Tanks (R38 above & below tanks)
- Additional Outside Frame-to-Wall Floor Insulation
- R11 2" Sidewalls (w/EGS metal backing strips)
- One-Piece ABS Slideroom Bottoms (floors insulated to R24)
- Superflex® Roof Membrane (TPO/Rubber Hybrid, 12-year warranty)
- 45-Degree Radius Aluminum Roof Edge
- Fully Vented Attic System
- 3/8" Fully Walk-On Roof Decking
- 5/8" Tongue & Groove Screwed & Glued Plywood Floor Decking
- Metal Skirt (covering the doorside frame)
- Pex® In-Floor Heated Waterlines & Kitchen Gray Pipes (all waterlines & drains located above all insulation)
- Fully-Enclosed & Heated Underbelly w/Direct-Heated Holding Tanks

Exterior Standards

- 7,000 LB Dexter® Axles w/Auto Adjusting Brakes & Height Adjusting Hangers
- 8-Lug Heavy-Duty Aluminum Rims w/16" E-Range Radial Tires
- EZ Flex® Rubberized Suspension
- Aluminum 3-Step Entry w/LED Light
- Roto-Flex® Hitch Pin
- 100% Exterior LED Running & Taillights
- Carefree® Electric Awning w/LED Light Bar (w/interior illuminated reminder switch)
- Propane Bottles on Same Side for Easy Access
- Sealed Battery Storage Compartment (no battery boxes required)

- Triple Front Slam-Latch Baggage Doors
- Side Slam-Latch Baggage Doors w/Gas Struts & Dual Locks
- 50 AMP Service w/Detachable Marine Power Cord
- Fully Painted Front Cap w/LED Accent Lights
- Frameless Windows Throughout
- 15,000 BTU Ducted Roof AC w/Quiet Cool (prewired for OPT ducted 15,000 BTU bedroom AC w/quiet cool)
- Wired & Framed for OPT 3rd 15,000 BTU AC
- 35,000 BTU Furnace w/3" x 14" In-Floor Straight Line Heating System
- 12 GAL Gas/Electric Hot Water Heater
- Dual-Function Bug/Flood LED Entry Door Floodlight
- (2) LED Ramp Door Lights
- LED Docking & Sewer Hookup Lights
- Sewer Hose Storage Tube
- Dual Swing-Away Assist Grab Handle
- Under-Frame Spare Tire w/Hoist
- Roof Ladder
- Heated Water Convenience Center (incl. black tank flush, power fresh tank water fill, winterizing system, outside shower, & dry-camping water siphon)
- Fully-Finished Heated & Sealed Basement Storage Compartment
- Camp Table & Patio Chairs Storage Compartment
- Heated & Enclosed Dump Valves
- Battery Disconnect
- Satellite Pre-Wire in Convenience Center & Roof
- Outside Speakers
- Generator Prep w/Surge Protector & Dedicated 30 GAL Fuel Tank
- 40 GAL Fuel Station w/Electric Pump

Exterior Options

- 6-Point Hydraulic Auto Leveling System
- 2nd Lighted Power Garage Entry Door Awning
- Dual Pane Frameless Windows
- Onan® 5500 Gas Generator
- 15,000 BTU Bedroom AC
- 15,000 BTU Garage AC w/Load Management System
- Slideout Cover PKG for Triple Slides
- Goodyear G-14 G-Rated Tires
- Backup Camera

Kitchen Standards

- Solid Surface Countertops, Flush-Mount Stove Covers & Sink Covers w/LG Handholds
- Large Residential 60/40 Stainless Steel Sink

- High-Arching, Pullout, Residential Metal Faucet
- 30" Microwave above Range
- U.S.-Made Large Dining Table w/Removable Leaf & 2 Heavy-Duty Chairs (2 additional folding chairs 3911TK)
- Maxxair® Kitchen Fan w/Remote Controls
- XL Pullout Trashcan
- Built-In Silverware Tray
- Under-Sink Storage Shelf
- Adjustable Pantry Shelves (most models)
- OH Cabinets incl. Shelf & Extra-Tall Slide Lips
- Hidden Cabinet Door Hinges
- 4" Stainless Steel Cabinet Hardware
- Baltic Birch Drawer Boxes
- Heavy-Duty 100 LB Drawer Glides
- LED Kitchen Cabinet Toe-Kicks
- Kitchen Window

Interior Standards

- Full MyRV® Control System (monitors tank levels & battery levels, controls slide rooms, leveling system, awnings, inside/outside lighting)
- 22 OZ Residential Carpet w/ 3/8" Re-bond Padding
- XL Ceiling Crown Molding
- Wood Slat Window Shades Throughout
- 100% LED Ceiling & Cabinet Lights w/Multiple On/Off Switches
- LED Rope Ambient Lighting
- Extra-LG Light Switches
- Faux Vinyl Soft Touch Ceiling
- Deluxe Residential-Style Furniture
- Removable Pedestal Tables in Front of Seating (based on model)
- 40" – 48" HD LED TV on Swing Arm w/Behind-TV Storage
- Residential Entertainment System w/DVD/Radio/Bluetooth/Sound Bar & Bass Subwoofer
- USB Charging Station & 12V Power Outlet

Interior Options

- Theater Seat IPO Free-Standing Table & Chairs (4013TK)
- 18 CU FT 120V Residential Refrigerator w/1000W Inverter
- 18 CU FT 4-Door RV Refrigerator (LP/Electric)
- 30" OTR Convection Oven/Microwave IPO OTR Microwave
- Maxxair® Fan w/Remote Controls (bath, bedroom, garage)
- Dual Interior Roller Shades
- Fireplace w/Remote
- Central Vacuum System

Bedroom Standards

- XL Deep Closet w/Shoe Storage Rack (3911TK, 4013TK)
- Dual Washer/Dryer Prep (stacked or side-by-side)
- XL Under-Bed Storage
- Luxurious Bedspread & Pillow Shams
- 32" HD Flat Panel TV on Swing Arm (w/speakers)
- 60" x 80" Queen-Size Cotton Cloud® Memory Foam Mattress w/Gel Top

Bedroom Options

- 72" x 80" King Size Cotton Cloud® Memory foam mattress w/Gel Top

Bath Standards

- 48" One-Piece FG Shower Stall w/Glass Doors & Built-In Seat
- Shower Skylight
- XL Solid Surface Bath Vanity w/Stainless Steel Sink
- Porcelain Foot-Flush Toilet
- XL Linen Cabinet
- XL Deep Closet w/Shoe Storage Rack (3911TK & 4013TK)
- Extra-Wide Hallway & Pocket Door
- Power Vent w/Wall Switch
- Towel Bar & Towel Ring

Garage Standards

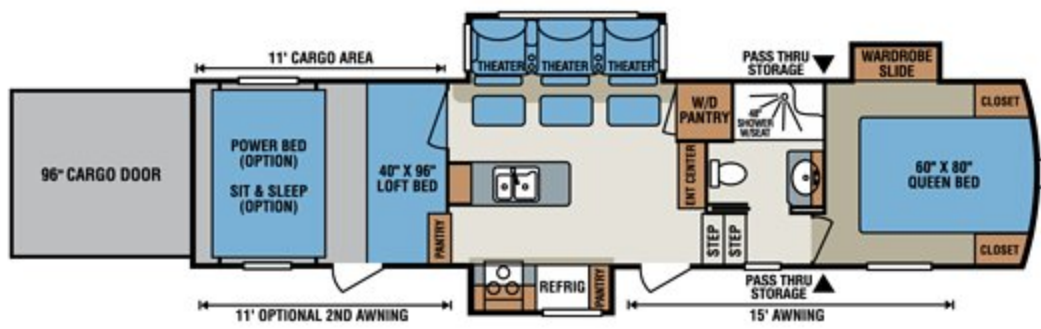
- Roll-Down Screen Wall
- E-Track Tie-Down System
- Built-In Dovetail
- 22" Diamond Plate Wall Guards
- Garage Entry Door
- 32" HD Flat Panel Garage TV on Swing Arm
- 12V Radio/DVD Player
- (2) Garage Ceiling Speakers
- Speaker On/Off Switches

Garage Options

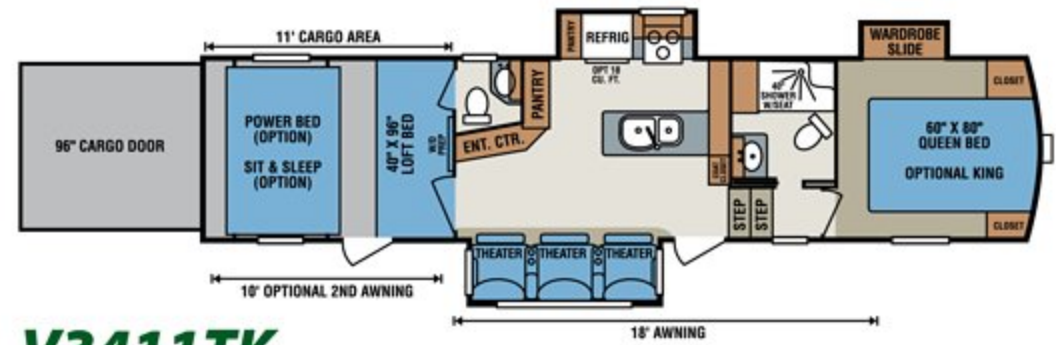
- HappiJac® Electric Bed & Rollover Sofa w/Table
- Ramp Door Patio w/Entry Steps & w/Electric Awning
- 3-Season Patio Door IPO Roll-Down Screen Wall
- Toy Lock
- Removable Edged Garage Carpet Kit

Bonus Features

- 2-Year Limited Warranty (see flyer)
- One of the Lightest, High-Profile, Wide Body, Luxury Toy Hauler Fifth Wheels in the Industry
- Dealer Satisfaction Index Award Winner for 15 Years
- 44 Years of Stable, Dedicated Workforce



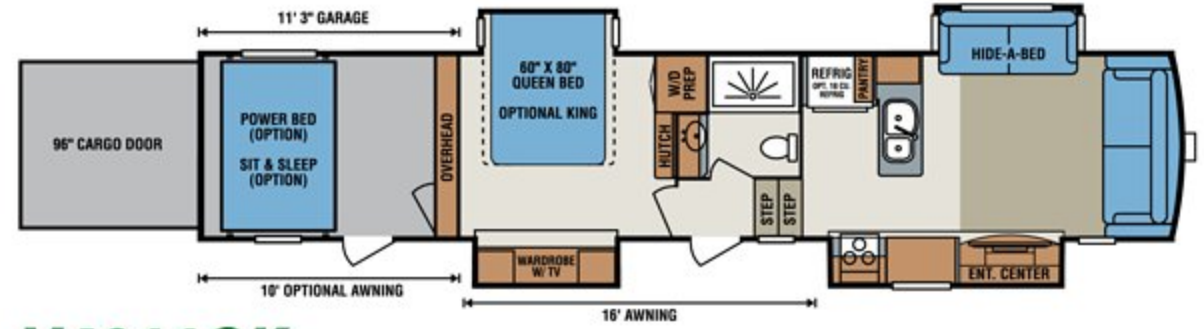
V3311TQ



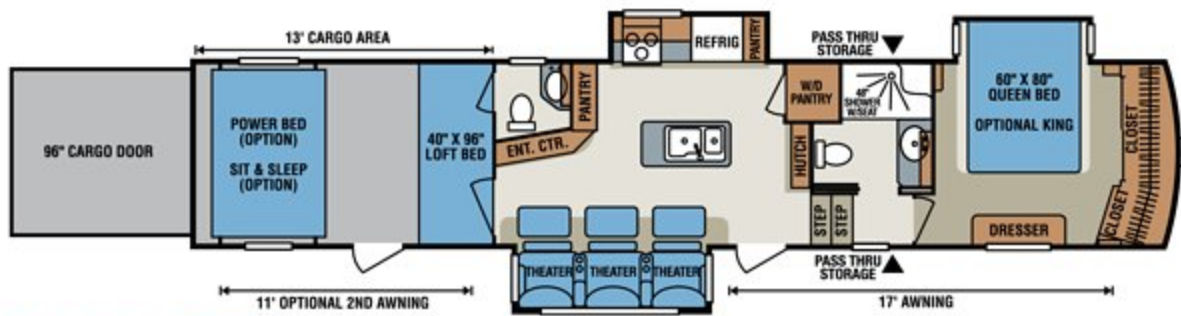
V3411TK



V3911TK



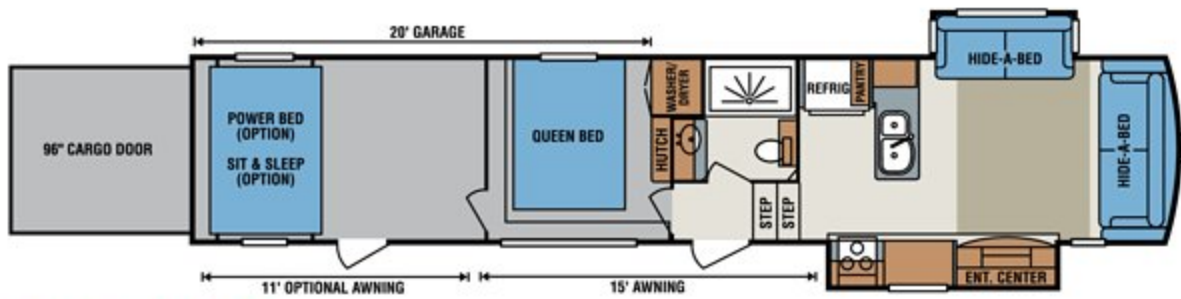
V4011QK



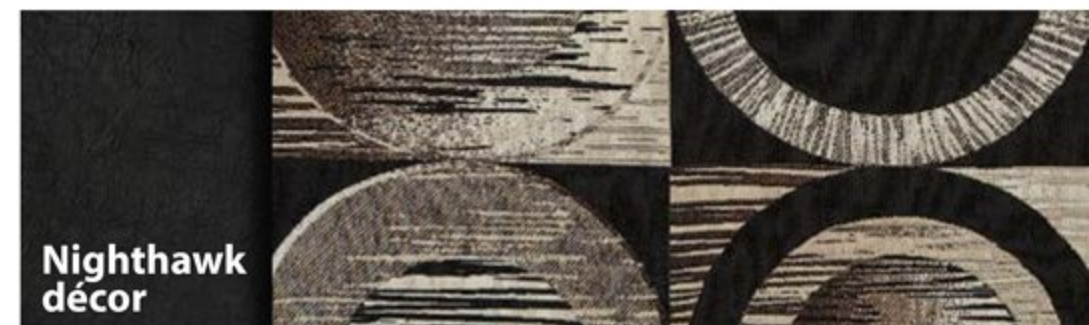
V4013TK



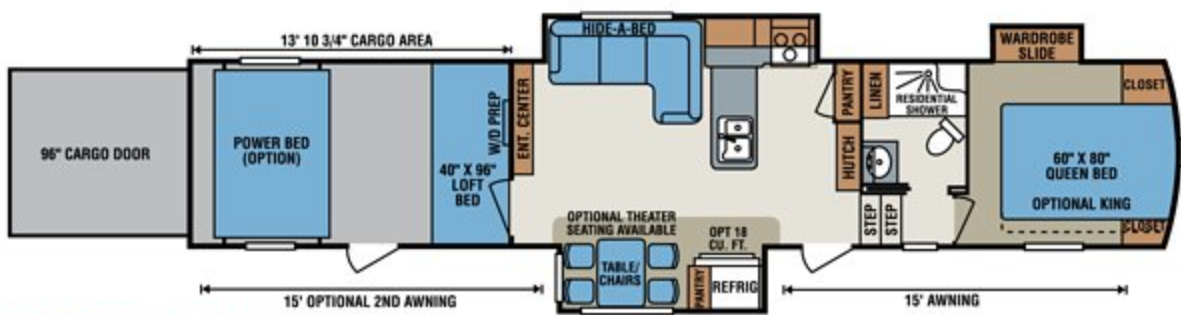
**Sandstorm
décor**



V4020DQ



**Nighthawk
décor**



V4114TK



RVIA

Luxury Fifth Wheel Toy Haulers	V3311TQ	V3411TK	V3911TK	V4011QK	V4013TK	V4020DQ	V4114TK
UVW (Unloaded Vehicle Weight)*	12,700	13,300	14,050	14,530	14,760	13,620	14,400
Dry Hitch Weight*	2,490	2,520	3,070	2,750	3,340	2,750	3,130
Dry Axle Weight*	10,210	10,780	10,980	11,780	11,420	10,870	11,270
NCC (Net Carrying Capacity)	3,300	2,700	4,950	4,470	4,240	5,380	4,600
GVWR	16,000	16,000	19,000	19,000	19,000	19,000	19,000
Interior Height	102"	102"	102"	102"	102"	102"	102"
Exterior Height	13' 4"	13' 4"	13' 4"	13' 4"	13' 4"	13' 4"	13' 4"
Exterior Width	101"	101"	101"	101"	101"	101"	101"
Exterior Length	36' 11"	37' 8"	42' 7"	42' 9"	43' 4"	43' 5"	43' 4"
Refrigerator (Cubic Feet)	8	8	8	8	8	8	8
Water Heater Cap. (Gal. G/E w/DSI)	12	12	12	12	12	12	12
Fresh Water Cap. (Gal. – including water heater capacity)	112	112	112	112	112	112	112
Waste Water Cap. (Gal.)	57	67	57	40	79	40	57
Gray Water Cap. (Gal.)	97	87	97	114	97	114	97
LP Gas Cap. (Lbs.)	60	60	60	60	60	60	60
Furnace BTUs (1,000s)	35	35	35	35	35	35	35
Tire Size	16"	16"	16"	16"	16"	16"	16"
Awning	15'	18'	17'	16'	17'	15'	15'
Optional 2nd Awning	11'	10'	11'	10'	11'	11'	15'

*This weight reflects the rolling average unit weight for each model. Your trailer weight will vary according to optional equipment.



Venom is a lightweight toy hauler offering many unique features, including a rear ramp that easily converts to a hanging deck. Just add the optional awning and rollout carpet, and Venom is transformed to an instant entertaining area with walkout back patio.



Dealer:

985 N 900 W • Shipshewana, IN 46565 E-mail kz@kz-rv.com • www.kz-rv.com

Due to continual research and advances, manufacturer reserves the right to change specifications, design, price and equipment without notice, and assumes no responsibility for any error in this literature. Some items shown are not included as standard or optional equipment. ©2015KZ | 1/27/16 | 20M