

SONIC
BY VENTURE RV

SONIC
LITE
BY VENTURE RV

Ultra-Lite Travel Trailers



SONIC
BY VENTURE RV

SONIC
LITE
BY VENTURE RV

Ultra-Lite Travel Trailers





Venture's line of Sonic ultra-lightweight, tandem-axle travel trailers is designed for today's smaller tow vehicles and families on the go. Although Sonic is lite on weight, it's certainly not basic, and its amenities compete head to head with many motorhomes.

SN200VML ▼ Summit décor

(Right) Sonic's well-laid-out kitchens include a 2-burner range with glass cooktop, which expands the counter space. Also standard is a 6.3 CU FT indoor gas/electric double-door refrigerator, double-bowl sink with cover, 82-inch ceiling height, LED lighting throughout, Bluetooth DVD/CD/MP3/AM/FM stereo, and floorplans with dinettes include flipside reversible 5-inch cushions.

(Below) The Murphy bed and folding sofa option (where applicable) is a versatile and smart use of space, opening up the living space by offering comfortable sofa relaxation during the day, and easily converting to a comfortable bed with memory foam mattress at night.



SN200VML ▼ Summit décor



SN200VML ▼ Summit décor

SONIC

BY VENTURE RV

Venture's line of Sonic ultra-lightweight, tandem-axle travel trailers is designed for today's smaller tow vehicles and families on the go. Although Sonic is lite on weight, it's certainly not basic, and its amenities compete head to head with many motorhomes.

SN200VML ▼ Summit décor



(Right) Sonic's well-laid-out kitchens include a 2-burner range with glass cooktop, which expands the counter space. Also standard is a 6.3 CU FT indoor gas/electric double-door refrigerator, double-bowl sink with cover, 82-inch ceiling height, LED lighting throughout, Bluetooth DVD/CD/MP3/AM/FM stereo, and floorplans with dinettes include flipside reversible 5-inch cushions.

(Below) The Murphy bed and folding sofa option (where applicable) is a versatile and smart use of space, opening up the living space by offering comfortable sofa relaxation during the day, and easily converting to a comfortable bed with memory foam mattress at night.



SN200VML ▼ Summit décor



SN200VML ▼ Summit décor



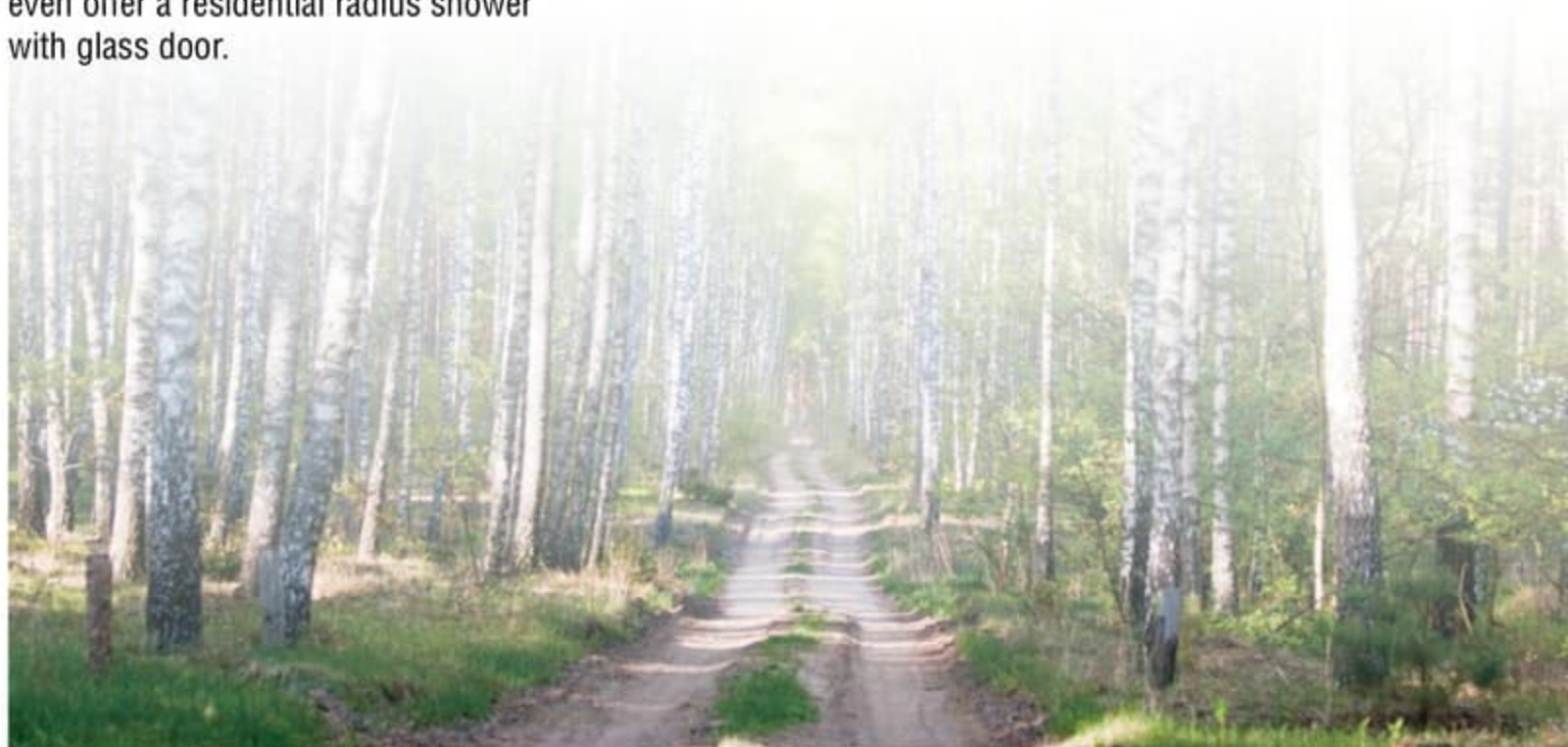
SH200VNL ▲ Summit décor
Sonic bath areas are filled with great features such as economical LED lighting, foot-flush toilet, medicine cabinet with mirror and most floorplans even offer a residential radius shower with glass door.





SN200VML ▲ Summit décor

Sonic bath areas are filled with great features such as economical LED lighting, foot-flush toilet, medicine cabinet with mirror and most floorplans even offer a residential radius shower with glass door.





SL169VBH ▼ Black Diamond décor

SONIC LITE BY VENTURE RV

Sonic Lite boasts the same construction techniques and 82-inch interior headroom as its older brother, but is offered with a single axle frame, and boasts starting weights of around 2,700 pounds! Sonic Lite is light on weight, large on livability, and versatile.

The Sonic Lite 169VBH includes rear bunks for the kids, and ample storage opportunities. Lite comes standard with LED lighting inside and out, an 82-inch interior height, 5-inch flipside reversible cushions, skylight, pleated nightshades and 2 interior speakers.

Shown with the interior luxury package, which includes a Bluetooth DVD/CD/MP3/AM/FM stereo with remote, 4.2 CU FT refrigerator, 2-burner cooktop, convection microwave, vented range hood and residential 8,000 BTU roof air conditioner.



SL169VBH ▼ Black Diamond décor

SONIC **LITE** BY VENTURE RV

Sonic Lite boasts the same construction techniques and 82-inch interior headroom as its older brother, but is offered with a single axle frame, and boasts starting weights of around 2,700 pounds! Sonic Lite is light on weight, large on livability, and versatile.

The Sonic Lite 169VBH includes rear bunks for the kids, and ample storage opportunities. Lite comes standard with LED lighting inside and out, an 82-inch interior height, 5-inch flipside reversible cushions, skylight, pleated nightshades and 2 interior speakers.

Shown with the interior luxury package, which includes a Bluetooth DVD/CD/MP3/AM/FM stereo with remote, 4.2 CU FT refrigerator, 2-burner cooktop, convection microwave, vented range hood and residential 8,000 BTU roof air conditioner.



The 169VBH also offers the versatile dinette/60" x 75" Murphy bed. Use the dinette by day and enjoy the comforts of memory foam at night. Side closets and overhead storage complete the space.



(Right) Sonic Lite baths include high-efficiency LED lighting, foot flush toilet, Lux maple mirrored medicine cabinet with storage, a power vent, skylight shower/tub with surround and designer shower curtain.



The Sonic Lite 169VBH also includes a Pack-N-Play feature that lets you load all sorts of extra gear, not just from the inside, but from the outside as well. With a folding large bottom bunk, you can store everything from bikes and coolers to lawn chairs, folding tables, fishing and sporting equipment.



SL169VBH ▼ Black Diamond décor

The 169VBH also offers the versatile dinette/60" x 75" Murphy bed. Use the dinette by day and enjoy the comforts of memory foam at night. Side closets and overhead storage complete the space.



SL169VBH ▼ Black Diamond décor



SL169VBH ▲ Black Diamond décor



SL169VBH

RE-RV.COM

The Sonic Lite 169VBH also includes a Pack-N-Play feature that lets you load all sorts of extra gear, not just from the inside, but from the outside as well. With a folding large bottom bunk, you can store everything from bikes and coolers to lawn chairs, folding tables, fishing and sporting equipment.

(Right) Sonic Lite baths include high-efficiency LED lighting, foot flush toilet, Lux maple mirrored medicine cabinet with storage, a power vent, skylight shower/tub with surround and designer shower curtain.



SN170VBH



SN170VRD



SN190VRB



SN200VML



SN210VRD **NEW**



SN220VBH



SN220VRB



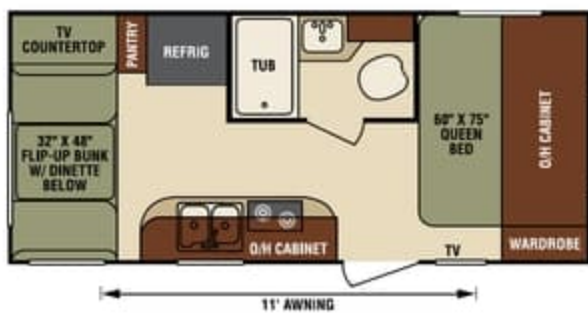
SN230VRL **NEW**



SN234VBH **NEW**

Travel Trailers	SN170VBH	SN170VRD	SN190VRB	SN200VML	SN210VRD	SN220VBH	SN220VRB	SN230VRL	SN234VBH
UWV (Unloaded Vehicle Weight)*	3,320	3,260	3,530	3,760	3,935	4,200	4,380	3,967	4,220
Dry Hitch Weight*	350	340	330	310	430	390	420	524	610
Dry Axle Weight*	2,970	2,920	3,200	3,450	3,505	3,810	3,960	3,443	3,610
NCC (Net Carrying Capacity)	680	740	970	1,040	1,265	1,000	1,440	1,233	980
GVWR	4,000	4,000	4,500	4,800	5,200	5,200	5,400	5,200	5,200
Interior Height	82"	82"	82"	82"	82"	82"	82"	82"	82"
Exterior Height with A/C	10' 3"	10' 3"	10' 3"	10' 3"	10' 3"	10' 3"	10' 3"	10' 3"	10' 3"
Exterior Width	90"	90"	90"	90"	90"	90"	90"	90"	90"
Exterior Length	21'	21'	22' 10"	23' 4"	25' 5"	26' 5"	26' 11"	26' 9"	26' 5"
Refrigerator (Cubic Feet)	6	6	6	6	6	6	6	6	6
Water Heater Cap. (Gal. G/E w/DSI)	6	6	6	6	6	6	6	6	6
Fresh Water Capacity (Gallon)	40	40	39	39	40	39	39	39	39
Black Water Capacity (Gallon)	30	30	30	30	30	30	30	30	30
Gray Water Capacity (Gallon)	30	30	30	30	30	30	30	30	30
LP Gas Capacity (Lbs.)	40	40	40	40	40	40	40	40	40
Furnace BTUs (1,000s - OPTIONAL)	20	20	20	20	20	20	20	20	20
Tire Size	14"	14"	14"	14"	14"	14"	14"	14"	14"
Awning	11'	11'	13'	14'	17'	13'	13'	17'	14'

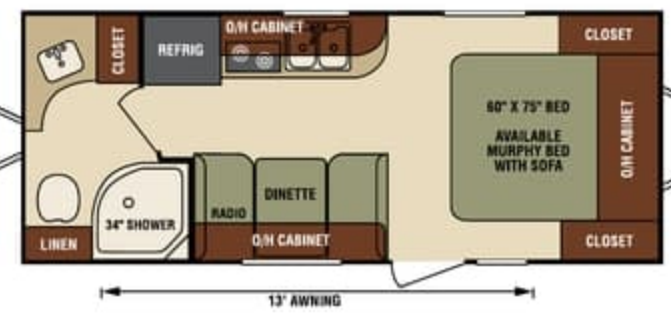
*This weight reflects the rolling average unit weight for each model. Your trailer weight will vary according to optional equipment.



SN170VBH



SN170VRD



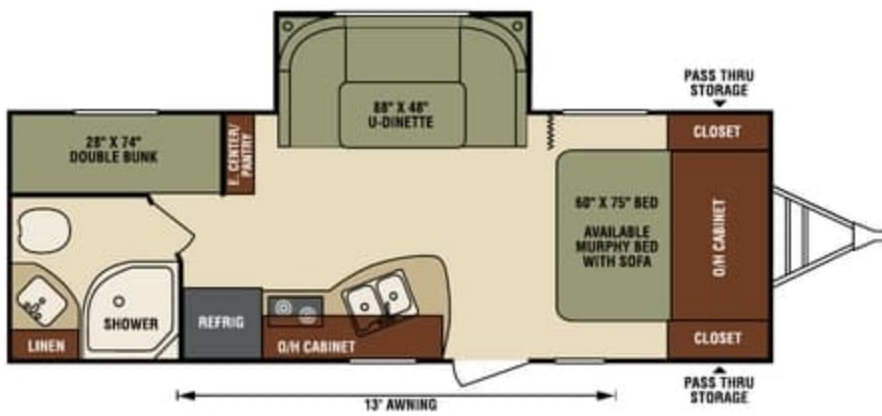
SN190VRB



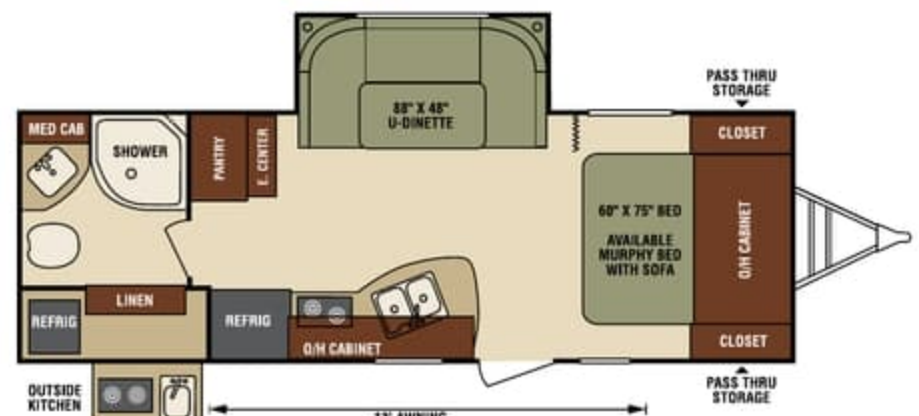
SN200VML



SN210VRD **NEW**



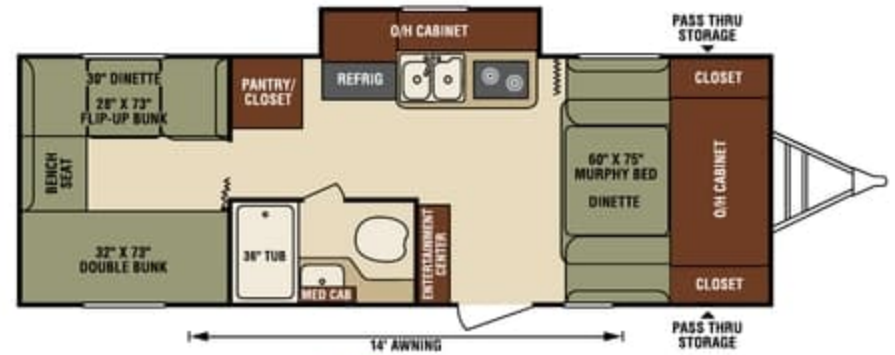
SN220VBH



SN220VRB



SN230VRL **NEW**



SN234VBH **NEW**

Travel Trailers	SN170VBH	SN170VRD	SN190VRB	SN200VML	SN210VRD	SN220VBH	SN220VRB	SN230VRL	SN234VBH
UVW (Unloaded Vehicle Weight)*	3,320	3,260	3,530	3,760	3,935	4,200	4,380	3,967	4,220
Dry Hitch Weight*	350	340	330	310	430	390	420	524	610
Dry Axle Weight*	2,970	2,920	3,200	3,450	3,505	3,810	3,960	3,443	3,610
NCC (Net Carrying Capacity)	680	740	970	1,040	1,265	1,000	1,440	1,233	980
GVWR	4,000	4,000	4,500	4,800	5,200	5,200	5,400	5,200	5,200
Interior Height	82"	82"	82"	82"	82"	82"	82"	82"	82"
Exterior Height with A/C	10' 3"	10' 3"	10' 3"	10' 3"	10' 3"	10' 3"	10' 3"	10' 3"	10' 3"
Exterior Width	90"	90"	90"	90"	90"	90"	90"	90"	90"
Exterior Length	21'	21'	22' 10"	23' 4"	25' 5"	26' 5"	26' 11"	26' 9"	26' 5"
Refrigerator (Cubic Feet)	6	6	6	6	6	6	6	6	6
Water Heater Cap. (Gal. G/E w/DSI)	6	6	6	6	6	6	6	6	6
Fresh Water Capacity (Gallon)	40	40	39	39	40	39	39	39	39
Black Water Capacity (Gallon)	30	30	30	30	30	30	30	30	30
Gray Water Capacity (Gallon)	30	30	30	30	30	30	30	30	30
LP Gas Capacity (Lbs.)	40	40	40	40	40	40	40	40	40
Furnace BTUs (1,000s - OPTIONAL)	20	20	20	20	20	20	20	20	20
Tire Size	14"	14"	14"	14"	14"	14"	14"	14"	14"
Awning	11'	11'	13'	14'	17'	13'	13'	17'	14'

*This weight reflects the rolling average unit weight for each model. Your trailer weight will vary according to optional equipment.

Black Diamond



Summit



SL150VRK **NEW**



SL167VMS **NEW**



SL169VBH **NEW**



Sonic and Sonic Lite both offer one-piece seamless fiberglass roof construction.



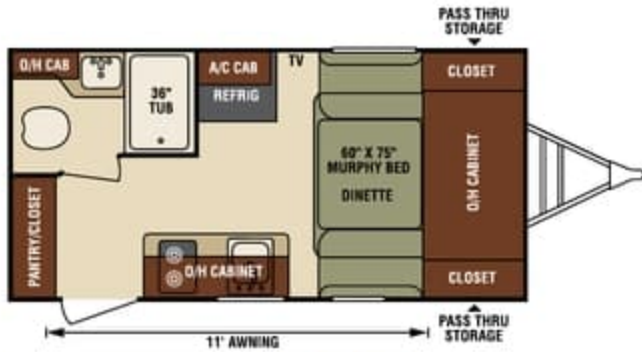
Seamless roofing prevents potential leaks, as the water runs off the front and back with no extrusions or seams. Avoids leaks around the sidewall seams, windows, doors, compartments and corner seams. Reliable seamless construction equals long-term investment.

Travel Trailers	SL150VRK	SL167VMS	SL169VBH
UVW (Unloaded Vehicle Weight)*	2,480	2,898	2,990
Dry Hitch Weight*	270	350	410
Dry Axle Weight*	2,210	2,548	2,570
NCC (Net Carrying Capacity)	1,020	1,102	1,010
GVWR	3,500	4,000	4,000
Interior Height	82"	82"	82"
Exterior Height	9' 5"	9' 5"	9' 5"
Exterior Width	90"	90"	90"
Exterior Length	19' 2"	20' 4"	21' 3"
Refrigerator (Cubic Feet)	4.2	4.2	4.2
Water Heater Cap. (Gal. G/E w/DSI)	6	6	6
Fresh Water Capacity (Gallon)	39	39	39
Black Water Capacity (Gallon)	30	30	30
Gray Water Capacity (Gallon)	30	30	30
LP Gas Capacity (Lbs.)	20	20	20
Furnace BTUs (1,000s - OPTIONAL)	16	16	16
Tire Size	14"	15"	14"
Awning	11'	11'	13'

*This weight reflects the rolling average unit weight for each model. Your trailer weight will vary according to optional equipment.

Black Diamond

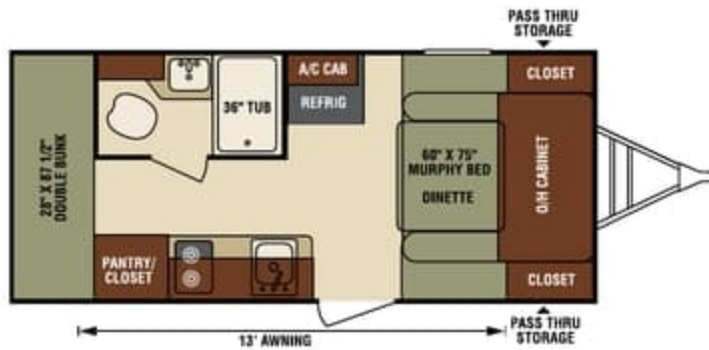
Summit



SL150VRK **NEW**



SL167VMS **NEW**



SL169VBH **NEW**



Sonic and Sonic Lite both offer one-piece seamless fiberglass roof construction.



Seamless roofing prevents potential leaks, as the water runs off the front and back with no extrusions or seams. Avoids leaks around the sidewall seams, windows, doors, compartments and corner seams. Reliable seamless construction equals long-term investment.

Travel Trailers	SL150VRK	SL167VMS	SL169VBH
UVW (Unloaded Vehicle Weight)*	2,480	2,898	2,990
Dry Hitch Weight*	270	350	410
Dry Axle Weight*	2,210	2,548	2,570
NCC (Net Carrying Capacity)	1,020	1,102	1,010
GVWR	3,500	4,000	4,000
Interior Height	82"	82"	82"
Exterior Height	9' 5"	9' 5"	9' 5"
Exterior Width	90"	90"	90"
Exterior Length	19' 2"	20' 4"	21' 3"
Refrigerator (Cubic Feet)	4.2	4.2	4.2
Water Heater Cap. (Gal. G/E w/DSI)	6	6	6
Fresh Water Capacity (Gallon)	39	39	39
Black Water Capacity (Gallon)	30	30	30
Gray Water Capacity (Gallon)	30	30	30
LP Gas Capacity (Lbs.)	20	20	20
Furnace BTUs (1,000s - OPTIONAL)	16	16	16
Tire Size	14"	15"	14"
Awning	11'	11'	13'

*This weight reflects the rolling average unit weight for each model. Your trailer weight will vary according to optional equipment.

Sonic Standards & Options

Living Room/Kitchen

- Roller Ball Bearing Drawer Guides
- Safe-Tek® Box
- Double Bowl Sink w/Sink Cover
- Bluetooth DVD/CD/MP3/AM/FM Stereo
- LED Lights
- Flipside Reversible Cushions
- Mocha Latte Mosaic Backsplash
- Cognac Maple Color Cabinet Wood
- (2) Interior Speakers
- 82" Interior Height
- Skylight
- Designer Carefree® Linoleum w/3-Year Warranty

Appliances

- 6.3 CU FT Double Door Refrigerator/Freezer
- 6-GAL DSI Gas/Electric Quick Recovery Water Heater
- 2-Burner Cooktop w/Glass Cover
- Vented Range Hood w/Light

Bath

- Residential Radius Shower w/Glass Doors (most models)
- LED Lights
- Foot-Flush Toilet
- Medicine Cabinet
- Power Vent

Bedroom

- Memory Foam Mattress
- Designer Valances
- Pleated Nightshades
- Designer Padded Headboard w/Storage
- Quilted Reversible Comforter
- Overhead Storage
- Under-Bed Storage
- LED Lights
- Two Shirt Closets (most models)

Exterior/Construction Features

- One Piece Seamless Fiberglass Roof
- Diamond Plate Rock Guard
- EZ Exchange® (2) 20 LB Tanks w/Auto Changeover

- Large Pass-Thru Storage
- Slam Latch Baggage Doors
- Wide-Trek® Axles
- Lighted Double Safety Step
- Norco BAL® E-Coated & Epoxy-Painted Huck Bolted Frame
- Motorhome-Style Grab Handle w/Light
- Champagne Infused Fiberglass Walls & Roof
- Exterior Shower w/Hot & Cold Water
- Tinted Safety Glass Windows
- Exterior LED Lighting
- Laminated Sidewalls w/Aluminum Framing
- (2) Marine Grade Exterior Speakers
- Bumper w/Sewer Hose Storage
- Satellite & Cable Hookup
- Porch Light
- Water Heater Bypass Valve
- Marine-Style Detachable Power Cord w/Light
- Tank Monitor System
- (4) Secure Stance® Angled Stabilizer Jacks
- Prewire Zamp® Solar
- Prewire for Backup Camera

Options

- 15,000 BTU A/C
- 13,500 BTU A/C
- Hide-a-Bed & Sofa w/Memory Foam Mattress (most models)
- Sleep Tight® Gel-Infused Memory Foam Mattress
- Aussie® Outside Grill
- Multi-Directional LED Lighted Power Awning
- LED TV w/Swing Arm Bracket
- High-Polished Aluminum Rims
- Convection Microwave
- Microwave
- Enclosed Heated Fresh Water Tank
- Lighted Power Tongue Jack w/Level
- Lightweight Package for 170 only (8,000 BTU A/C, 4 CU FT fridge)

Highway Package

- Black Tank Flush
- Spare Tire, Carrier & Cover
- LP Bottle Cover
- Outside Shower

Sonic Lite Standards & Options

Living Room/Kitchen

- Roller Ball Bearing Drawer Guides
- Safe-Tek® Box
- High Efficiency LED Lighting
- Flip Side Reversible Cushions
- Mocha Latte Mosaic Backsplash
- (2) Interior Speakers
- 82" Interior Height
- Skylight
- Designer Carefree Linoleum w/3 Year Warranty
- Pleated Nightshades
- Shoe Cubby
- Lux Maple Mortise & Tenon Hardwood Doors

Bathroom

- High Efficiency LED Lighting
- Foot Flush Toilet
- Lux Maple Mirrored Medicine Cabinet w/Storage
- Power Vent
- Skylight Shower/Tub Surround
- Designer Shower Curtain

Bedroom

- High Efficiency LED Lighting
- Memory Foam Mattress
- Designer Valances
- Pleated Nightshades
- Designer Padded Headboard w/Storage
- Quilted Reversible Comforter
- Over Head Storage
- Shirt Closet(s)

Exterior/Construction Standards

- High Efficiency LED Lighting
- One Piece Seamless Fiberglass Roof
- Easy Exchange 20# LP Tank
- Large Pass-Thru Storage
- Lighted Safety Step
- Norco-BAL E-Coated & Epoxy Painted Huck Bolted Frame
- Five Sided Champagne Color Infused Fiberglass
- Tinted Safety Glass Windows

- Aluminum Framed Floor, Sidewalls & Roof
- (2) Marine Grade Speakers
- Large Bumper w/Sewer Hose Storage
- Satellite & Cable Hookup
- Porch Light
- Water Heater By-Pass Valve
- Tank Monitor System
- Marine Style 30 Amp Power Cord w/Light
- 6 Gallon DSI Gas/Electric Water Heater

Exterior Luxury Package (Mandatory Option)

- High Polished Aluminum Rims
- (4) BAL Scissor Jacks w/Foot Pads
- Motorhome Lighted Grab Handle
- Black Tank Flush
- Prewire for ZampSolar
- Prewire for Backup Camera
- Motorhome Style Slam Latch Baggage Doors

- Multi Directional LED Lighted Power Awning
- Exterior Shower w/Hot & Cold Water

Interior Luxury Package (Mandatory Option)

- Bluetooth DVD/CD/MP3/AM/FM Stereo w/Remote
- 4.2 Refrigerator
- 2-Burner Cooktop
- Convection Microwave
- Vented Range Hood
- Residential 8,000 BTU A/C

Options

- LED TV w/Swing Arm Bracket
- Low Profile 13.5 AC
- Lighted Power Tongue Jack w/Level
- Spare Tire, Carrier & Cover



985 N 900 W • Shipshewana, IN 46565
www.venture-rv.com

Due to continual research and advances, manufacturer reserves the right to change specifications, design, price and equipment without notice, and assumes no responsibility for any error in this literature. Some items shown are not included as standard or optional equipment. ©2015 Venture | 1/27/16 | 30M

Sonic Standards & Options

Living Room/Kitchen

- Roller Ball Bearing Drawer Guides
- Safe-Tek® Box
- Double Bowl Sink w/Sink Cover
- Bluetooth DVD/CD/MP3/AM/FM Stereo
- LED Lights
- Flipside Reversible Cushions
- Mocha Latte Mosaic Backsplash
- Cognac Maple Color Cabinet Wood
- (2) Interior Speakers
- 82" Interior Height
- Skylight
- Designer Carefree® Linoleum w/3-Year Warranty

Appliances

- 6.3 CU FT Double Door Refrigerator/Freezer
- 6-GAL DSI Gas/Electric Quick Recovery Water Heater
- 2-Burner Cooktop w/Glass Cover
- Vented Range Hood w/Light

Bath

- Residential Radius Shower w/Glass Doors (most models)
- LED Lights
- Foot-Flush Toilet
- Medicine Cabinet
- Power Vent

Bedroom

- Memory Foam Mattress
- Designer Valances
- Pleated Nightshades
- Designer Padded Headboard w/Storage
- Quilted Reversible Comforter
- Overhead Storage
- Under-Bed Storage
- LED Lights
- Two Shirt Closets (most models)

Exterior/Construction Features

- One Piece Seamless Fiberglass Roof
- Diamond Plate Rock Guard
- EZ Exchange® (2) 20 LB Tanks w/Auto Changeover

- Large Pass-Thru Storage
- Slam Latch Baggage Doors
- Wide-Trek® Axles
- Lighted Double Safety Step
- Norco BAL® E-Coated & Epoxy-Painted Huck Bolted Frame
- Motorhome-Style Grab Handle w/Light
- Champagne Infused Fiberglass Walls & Roof
- Exterior Shower w/Hot & Cold Water
- Tinted Safety Glass Windows
- Exterior LED Lighting
- Laminated Sidewalls w/Aluminum Framing
- (2) Marine Grade Exterior Speakers
- Bumper w/Sewer Hose Storage
- Satellite & Cable Hookup
- Porch Light
- Water Heater Bypass Valve
- Marine-Style Detachable Power Cord w/Light
- Tank Monitor System
- (4) Secure Stance® Angled Stabilizer Jacks
- Prewire Zamp® Solar
- Prewire for Backup Camera

Options

- 15,000 BTU A/C
- 13,500 BTU A/C
- Hide-a-Bed & Sofa w/Memory Foam Mattress (most models)
- Sleep Tight® Gel-Infused Memory Foam Mattress
- Aussie® Outside Grill
- Multi-Directional LED Lighted Power Awning
- LED TV w/Swing Arm Bracket
- High-Polished Aluminum Rims
- Convection Microwave
- Microwave
- Enclosed Heated Fresh Water Tank
- Lighted Power Tongue Jack w/Level
- Lightweight Package for 170 only (8,000 BTU A/C, 4 CU FT fridge)

Highway Package

- Black Tank Flush
- Spare Tire, Carrier & Cover
- LP Bottle Cover
- Outside Shower

Sonic Lite Standards & Options

Living Room/Kitchen

- Roller Ball Bearing Drawer Guides
- Safe-Tek® Box
- High Efficiency LED Lighting
- Flip Side Reversible Cushions
- Mocha Latte Mosaic Backsplash
- (2) Interior Speakers
- 82" Interior Height
- Skylight
- Designer Carefree Linoleum w/3 Year Warranty
- Pleated Nightshades
- Shoe Cubby
- Lux Maple Mortise & Tenon Hardwood Doors

Bathroom

- High Efficiency LED Lighting
- Foot Flush Toilet
- Lux Maple Mirrored Medicine Cabinet w/Storage
- Power Vent
- Skylight Shower/Tub Surround
- Designer Shower Curtain

Bedroom

- High Efficiency LED Lighting
- Memory Foam Mattress
- Designer Valances
- Pleated Nightshades
- Designer Padded Headboard w/Storage
- Quilted Reversible Comforter
- Over Head Storage
- Shirt Closet(s)

Exterior/Construction Standards

- High Efficiency LED Lighting
- One Piece Seamless Fiberglass Roof
- Easy Exchange 20# LP Tank
- Large Pass-Thru Storage
- Lighted Safety Step
- Norco-BAL E-Coated & Epoxy Painted Huck Bolted Frame
- Five Sided Champagne Color Infused Fiberglass
- Tinted Safety Glass Windows

- Aluminum Framed Floor, Sidewalls & Roof
- (2) Marine Grade Speakers
- Large Bumper w/Sewer Hose Storage
- Satellite & Cable Hookup
- Porch Light
- Water Heater By-Pass Valve
- Tank Monitor System
- Marine Style 30 Amp Power Cord w/Light
- 6 Gallon DSI Gas/Electric Water Heater

Exterior Luxury Package (Mandatory Option)

- High Polished Aluminum Rims
- (4) BAL Scissor Jacks w/Foot Pads
- Motorhome Lighted Grab Handle
- Black Tank Flush
- Prewire for ZampSolar
- Prewire for Backup Camera
- Motorhome Style Slam Latch Baggage Doors

- Multi Directional LED Lighted Power Awning
- Exterior Shower w/Hot & Cold Water

Interior Luxury Package (Mandatory Option)

- Bluetooth DVD/CD/MP3/AM/FM Stereo w/Remote
- 4.2 Refrigerator
- 2-Burner Cooktop
- Convection Microwave
- Vented Range Hood
- Residential 8,000 BTU A/C

Options

- LED TV w/Swing Arm Bracket
- Low Profile 13.5 AC
- Lighted Power Tongue Jack w/Level
- Spare Tire, Carrier & Cover



985 N 900 W • Shipshewana, IN 46565
www.venture-rv.com

Due to continual research and advances, manufacturer reserves the right to change specifications, design, price and equipment without notice, and assumes no responsibility for any error in this literature. Some items shown are not included as standard or optional equipment. ©2015 Venture | 1/27/16 | 30M