

**Coachmen**  
Leader in the Great Outdoors

# CATALINA TRAILBLAZER

**FREE**  
STARLIGHT  
SYSTEM  
DETAILS  
INSIDE!



CATALINA  
TRAILBLAZER

**THE FUN BEGINS WHERE THE ROAD ENDS...**

# 26<sup>TH</sup>



Introducing the newest segment to the Catalina line-up, the Trail Blazer toy hauler. Available now in two popular floorplans.

## STARLIGHT SYSTEM!

CATALINA IS PROUD TO RELEASE OUR NEW REMOTE OPERATED STARLIGHT SYSTEM FREE AS PART OF OUR TRAIL BLAZER PACKAGE

### MULTIPLE LIGHTS!

THE STARLIGHT SYSTEM INCLUDES BLUE LED LIGHTS INSTALLED ALONG THE FRAME UNDER BOTH SIDES OF THE TRAILER AND UNDER THE POWER AWNING

### REMOTE OPERATION!

SIMPLE TO CONTROL, THE STARLIGHT SYSTEM ALSO FEATURES A REMOTE ALLOWING YOU TO BRIGHTEN, DIM, TURN THE LIGHTS ON/OFF AND OPEN/CLOSE THE AWNING



USE THE QR CODE SCANNER ON YOUR SMARTPHONE TO SCAN THE QR CODE AND SEE OUR EXCLUSIVE STARLIGHT SYSTEM IN ACTION.



26TH SHOWN IN MOCHA DECOR (BACK TO FRONT VIEW)

26TH FRONT TO BACK VIEW/CARGO AREA

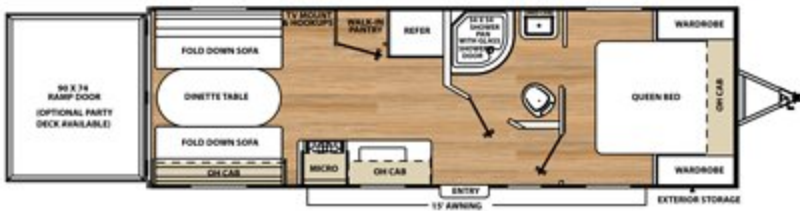


26TH EXTERIOR CARGO RAMP

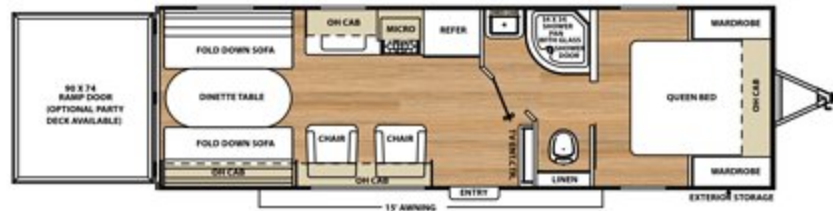
OPTIONAL RAMP DOOR PATIO SYSTEM

## TRAIL BLAZER FLOORPLANS

### 22TH

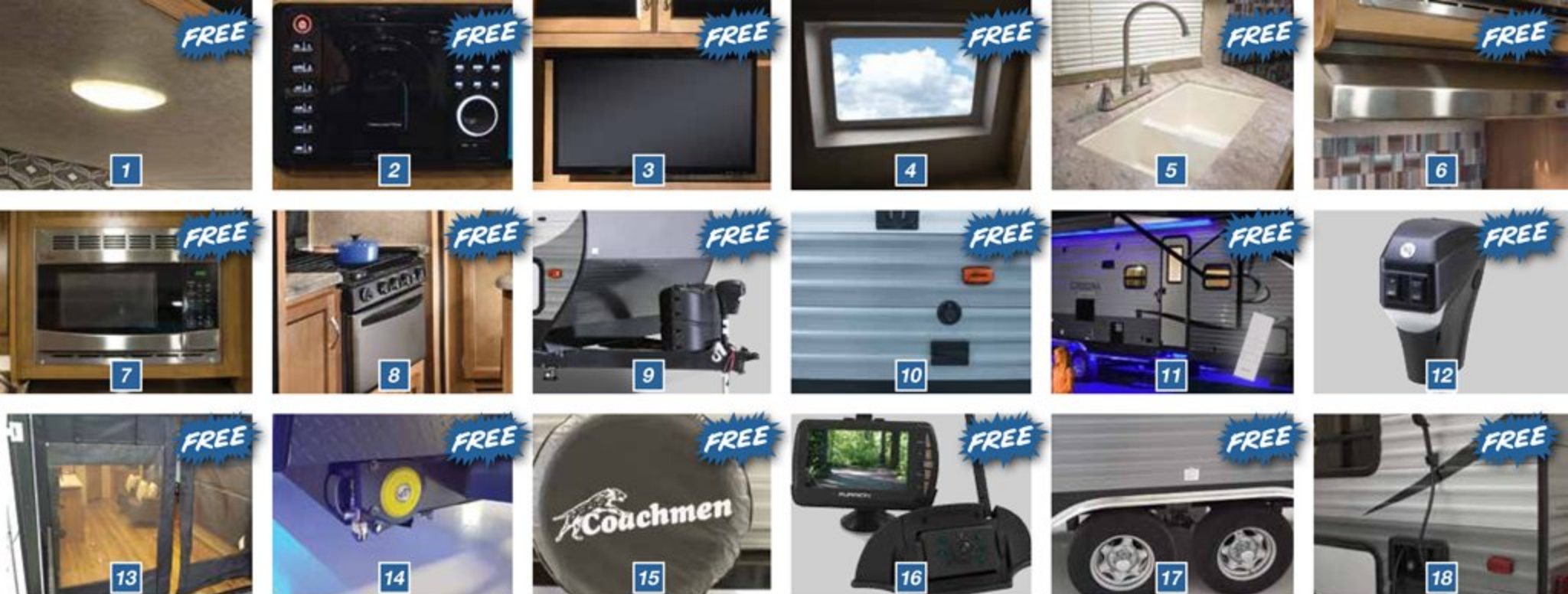


### 26TH



MODEL	22TH	26TH
UVW	5,335	5,487
Carrying Capacity	2,565	2,413
GVWR	7,900	7,900
Hitch Weight	925	957
Exterior Height (with A/C)	10'7"	10'7"
Fresh Water Capacity (gal.)	46	46
Grey Water Capacity (gal.)	40	40
Waste Water Capacity (gal.)	30	30
Awning Length	15'	15'
Wheel Size	15"	15"
Exterior Length	29'0"	29'10"
Exterior Width	96"	96"
Interior Height (Coach)	81"	81"
Axles	3500 LBS.	3500 LBS.

For more information on weights please see the back cover



## FREE TRAIL BLAZER PACKAGE

Catalina would like to celebrate the launch of our new TRAIL BLAZER by offering our customers the FREE TRAIL BLAZER Package. All of our best options have been combined into this free package. At Coachmen Catalina, we overtly express our gratitude to those who have already become a part of the Coachmen Family and warmly welcome those future campers that choose Coachmen Products. Thank you for your business!

### FREE TRAIL BLAZER PACKAGE

- |  |  |
|--|--|
| 1 LED INTERIOR LIGHTING                        | 6 STAINLESS STEEL RANGE HOOD AND MOSAIC TILE BACKSPLASH  |
| 2 AM/FM RADIO WITH CD AND DVD PLAYER           | 7 STAINLESS STEEL MICROWAVE                              |
| 3 32" FLAT SCREEN LED TV AND SWING ARM BRACKET | 8 STAINLESS STEEL OVEN                                   |
| 4 SKYLIGHT ABOVE TUB/SHOWER                    | 9 FRONT DIAMOND PLATE AND 20 LB. LP TANKS WITH ABS COVER |
| 5 UNDER MOUNT DUAL BASIN DEEP KITCHEN SINK     | 10 EXTERIOR TV MOUNT AND CABLE HOOK-UP                   |
|  | 11 REMOTE OPERATED STARLIGHT SYSTEM                      |

- |  |
|--|
| 12 POWER TONGUE JACK   |
| 13 CARGO AREA REAR SCREEN WALL   |
| 14 TOY LOC   |
| 15 SPARE TIRE AND COVER  |
| 16 REAR VISION CAMERA PREP   |
| 17 SPORT WHEEL PACKAGE (SILVER E-COAT SPORT WHEELS W/CHROME HUBS AND LUGS) |
| 18 OUTSIDE SHOWER  |

### POPULAR OPTIONS

- OPT. 15K BTU A/C IPO 13.5K BTU A/C
- OPT. 50 AMP SERVICE (FOR USE WITH > 4K GENERATORS)
- OPT. KITCHEN SINK COVERS (2)
- OPT. 30 LB. LP BOTTLES WITH COVER
- OPT. RAMP DOOR PATIO SYSTEM

**CATALINA**  
**TRAILBLAZER**



**FREE ONE YEAR  
MEMBERSHIP**



### Big benefits for new owners

Coachmen is proud to sponsor the largest manufacturer sponsored camping club in North America ... Coachmen Owners' Association (COA). COA provides a broad breadth of value propositions for our owners including: planned trips/ tours and rallies at bulk rate discounts, free trip routing, free campground directory, free Easy RVing magazine, theme park discounts, fuel discounts, mail forwarding, a dedicated COA web site, local and state club activities and Caravan Chapter membership opportunities. Most importantly, COA enhances the Coachmen ownership and RV lifestyle experience.

Every new Coachmen RV buyer is eligible for a 1 Year FREE membership in the Coachmen Owners' Association. It all adds up to an easy ownership experience!

### Travel Easy™ Roadside Assistance

RVing is easier with Coachmen's Travel Easy™ Roadside Assistance provided FREE the first year of ownership to those who purchase a New Coachmen RV. Administered by Coach-Net, this service provides you with 24/7 operational, technical and emergency road service coverage. Also included is towing, fuel delivery, jump starts, lockout service, tire changes, mobile mechanic and unlimited technical assistance. Anytime. Travel Easy™ is the security of knowing that help is an easy phone call away.



All information contained in this brochure is believed to be accurate at the time of publication. However, during the model year, it may be necessary to make revisions and Forest River, Inc., reserves the right to make all such changes without notice, including prices, colors, materials, equipment and specifications as well as the addition of new models and the discontinuance of models shown in this brochure. Therefore, please consult with your Forest River, Inc., dealer and confirm the existence of any materials, design or specifications that are material to your purchase decision.

To learn more about Coachmen RV and our products and see how Coachmen is leading the great outdoors, visit [www.coachmenrv.com](http://www.coachmenrv.com)

## CUSTOMER SATISFACTION



[www.ForestRiverBuyLocal.com](http://www.ForestRiverBuyLocal.com)

**GVWR (Gross Vehicle Weight Rating)** - is the maximum permissible weight of the unit when fully loaded. It includes all weights, inclusive of all fluids, cargo, optional equipment and accessories. For safety and product performance do NOT exceed the GVWR.

**GAWR (Gross Axle Weight Rating)** - is the maximum permissible weight, including cargo, fluids, optional equipment and accessories that can be safely supported by a combination of all axles.

**UVW (Unloaded Vehicle Weight)\*** - is the typical weight of the unit as manufactured at the factory. It includes all weight at the unit's axle(s) and tongue or pin and LP Gas. The UVW does not include cargo, fresh potable water, additional optional equipment or dealer installed accessories.

\*Estimated Average based on standard build optional equipment.

**CCC (Cargo Carrying Capacity)\*\*** - is the amount of weight available for fresh potable water, cargo, additional optional equipment and accessories. CCC is equal to GVWR minus UVW. Available CCC should accommodate fresh potable water (8.3 lbs per gallon). Before filling the fresh water tank, empty the black and gray tanks to provide for more cargo capacity.

\*\* Estimated average based on standard build optional equipment

Each Forest River RV is weighed at the manufacturing facility prior to shipping. A label identifying the unloaded vehicle weight of the actual unit and the cargo carrying capacity is applied to every Forest River RV prior to leaving our facilities. The load capacity of your unit is designated by weight, not by volume, so you cannot necessarily use all available space when loading your unit.

## CUSTOMER NOTES



**CATALINA  
TRAILBLAZER**



Learn More  
Scan this barcode using  
a QR Reader on your  
smart phone to learn  
more about Forest River.



YOUR CATALINA DEALER