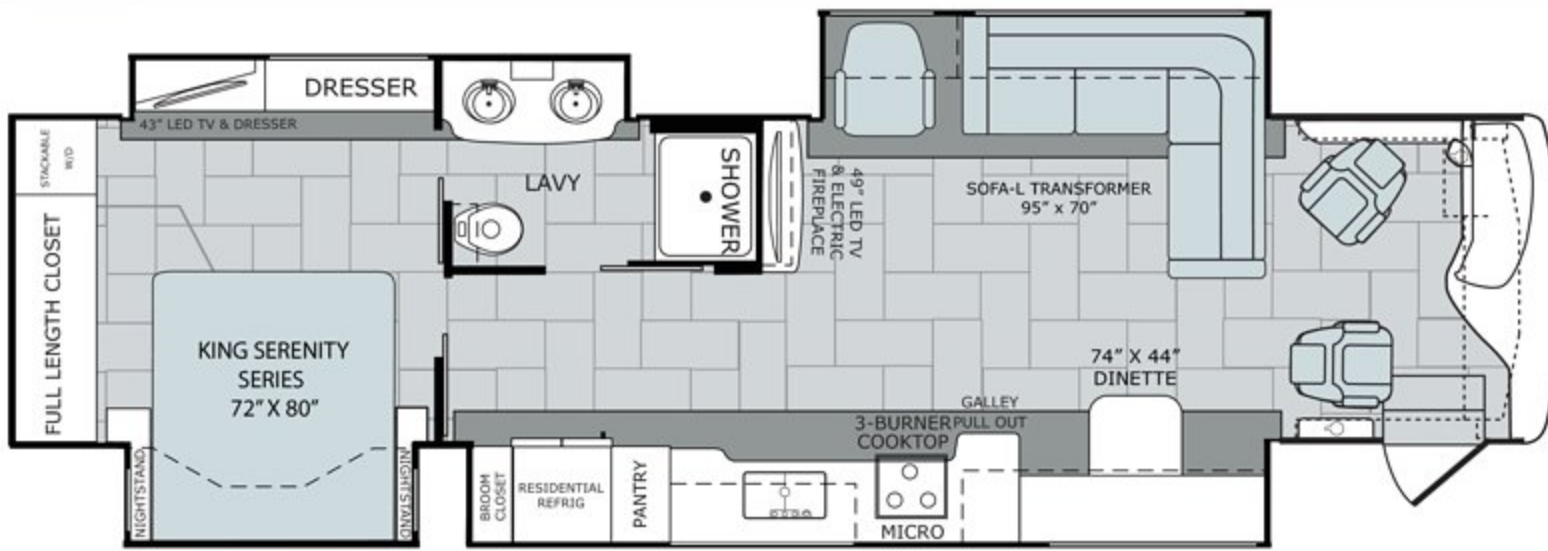


NAVIGATOR'S TOP FEATURES

- 340HP Cummins® ISB 6.7L Engine
- 8.0 Kw Onan® Quiet Diesel Generator
- Rand McNally GPS w/ WiFi Connectivity***
- Villa® Furniture
- Electric Fireplace
- LG® TV & A/V Electronics
- Hardwood Window Valance
- Hardwood Ceiling Treatment
- 12" x 24" Composite Plank Style Flooring
- Power Awning w/LED Light Strip
- Power Cord Reel
- Central Vacuum
- Front Compartment Tray
- Auto Generator Start

FLOORPLANS

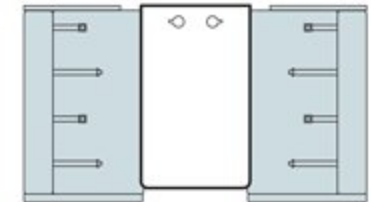
38F Options: 203, 830



Available Options

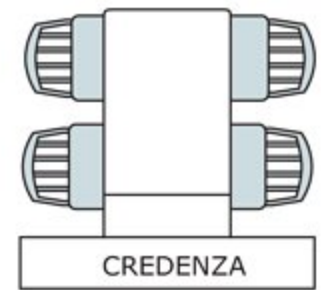
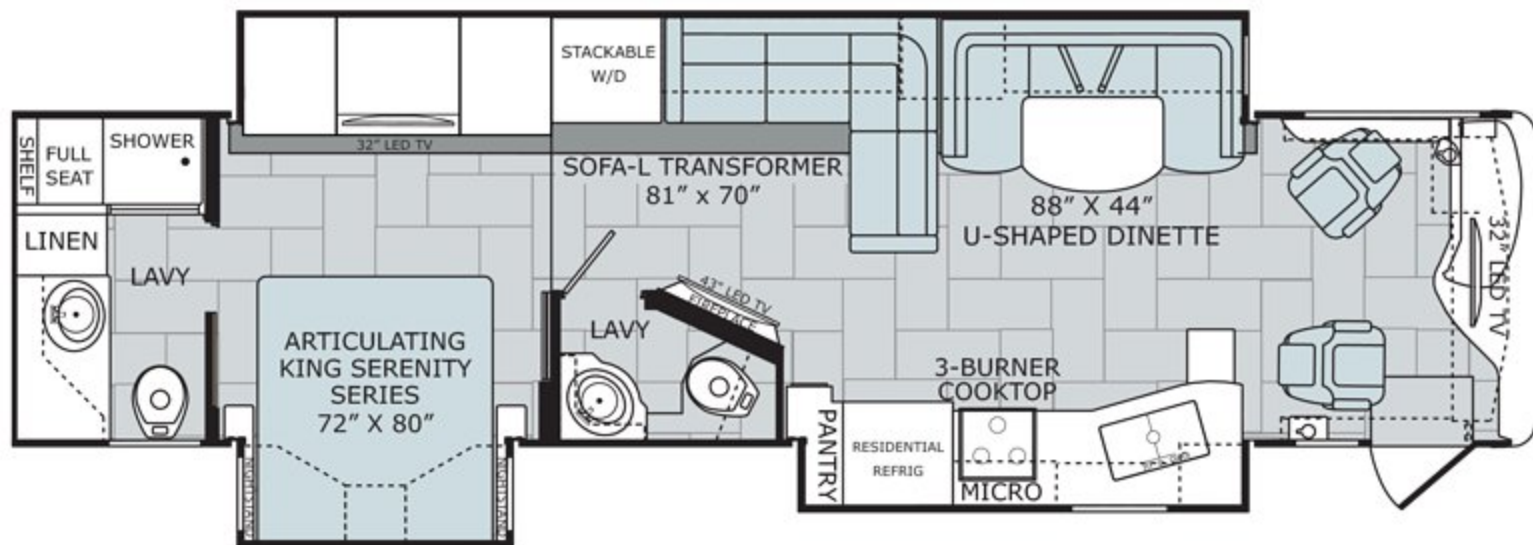


OPT. 203
SOFA



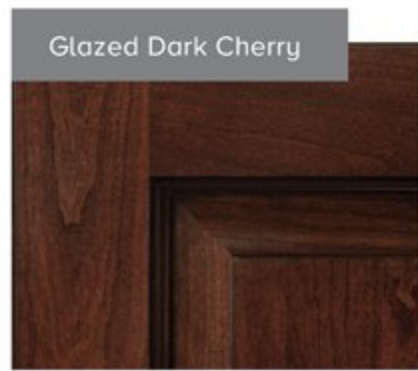
OPT. 830
FACING DINETTE

38K Options: 833



OPT. 833
FREE-STANDING DINETTE
WITH CREDENZA

WOOD CHOICES



DÉCOR CHOICES



1 | Sofa 2 | Accent 3 | Bedspread 4 | Countertop 5 | Flooring 6 | Carpet

EXTERIOR CHOICES



CHASSIS

MODEL	38F	38K
Wheelbase (inches)	263"	252"
GVWR (lbs) ¹	32,400	32,400
Front GAWR (lbs) ²	12,400	12,400
Rear GAWR (lbs) ²	20,000	20,000
GCWR (lbs) ³	33,000	33,000
Hitch Rating Weight (lbs) [†]	10,000	10,000
Tongue Weight (lbs) [*]	1,000	1,000
Fuel Capacity (gal)	100	100

POWER BRIDGE® CHASSIS

Model: Freightliner® XCM Series
 Engine: Cummins® ISB 6.7L
 Transmission: Allison® 2500 MH 6-Speed w/Electronic Shifter

Alternator: Delco Remy 160 Amp
 Torque: 700 lb.-ft. @ 1,600 RPM
 Horsepower: 340 HP

DIMENSIONS AND CAPACITIES

MODEL	38F	38K
Overall Length (inches) ⁴	40' 1"	39' 4"
Overall Height (suspension inflated)	12' 10"	12' 10"
Overall Width (maximum) ^{5,6}	102"	102"
Interior Height (maximum)	84"	84"
Interior Width (maximum)	96"	96"
Patio Awning Width	18'	10' 8"
Interior Storage (cu. ft.)	174	151
Exterior Storage (cu. ft.)	138	144
Fresh Water Holding Tank (gal)	105	105
Grey Water Holding Tank (gal)	75	75
Black Water Holding Tank (gal)	50	50
Appliance Propane Tank (gal) (WC) ⁷	38.7	38.7
Water Heater Tank (gal)	16	16



HOLIDAY RAMBLER
 This is living.

Addendums

- GVWR (Gross Vehicle Weight Rating) is the maximum permissible weight of this fully loaded motorhome. The GVWR is equal to or greater than the sum of the (UVW) unloaded vehicle weight plus the (OCCC) occupant cargo-carrying capacity*.
 - GAWR (Gross Axle Weight Rating) is the maximum permissible loaded weight a specific axle is designed to carry.
 - GCWR (Gross Combined Weight Rating) is the value specified by the motorhome manufacturer as the maximum allowable loaded weight of this motorhome with its towed vehicle. Towing and braking capacities may be different. Refer to Holiday Rambler and chassis manufacturer's manuals for complete information.
 - Length measured from front bumper to rear bumper (excludes accessories).
 - Excludes safety equipment and awnings.
 - Motorhomes feature a body width over 96" which will restrict your access to certain roads. Before purchasing, you should research any state and/or province road laws which may affect your usage.
 - Tank manufacturer's listed water capacity (WC). Actual propane capacity is 80% of water listing as required by the safety code.
- † The chassis manufacturer recommends the installation of a supplemental brake control system to activate the brakes on the vehicle or trailer you are towing. Hitch receiver ratings expressed are maximum for the hitch receiver installed and may require the purchase of additional equipment that is dependent on the weight of the towed load. Consult with hitch receiver manufacturer for further information.
- * UVW and OCCC are found on the label containing the federal certification tag in each RV.
- †† The Minimum Towable Load of this vehicle is the available weight capacity, up to GCWR, when the coach is fully loaded to maximum GVWR. However, if the coach is loaded to something less than maximum GVWR, that extra available weight capacity can be added to your Towable Load. For example, if your coach is loaded to 1000lbs less than maximum GVWR, your Towable Load increases accordingly. Do not exceed the hitch rating weight, GVWR or GCWR.

IMPORTANT—PLEASE READ

Product information, photography and illustrations included in this publication were as accurate as possible at the time of printing. For further product information and changes, please visit our website at www.holidayrambler.com or contact your local Holiday Rambler dealer. Prices, materials, design and specifications are subject to change without notice. All weights, fuel, liquid capacities and dimensions are approximate. Holiday Rambler has designed its recreational vehicles to provide a variety of uses for customers. Each vehicle features optimal seating, sleeping, storage and fluid capacities. The user is responsible for selecting the proper combination of loads (i.e., occupants, equipment, fluids, cargo, etc.) to ensure that the vehicle's capacities are not exceeded.

CONTACT US

To locate a dealer near you, visit our website at www.holidayrambler.com or call 1-877-252-1666. We can also be contacted at Holiday Rambler Customer Relations, P.O. Box 1007, Decatur, IN 46733.

** All 2017 REV Recreation Group motorhomes include a limited one-year/15,000-mile coach warranty and three-year/45,000-mile structural warranty, whichever occurs first, and is fully transferable for the first 12 months.

***User is responsible for all 3rd party data charges