

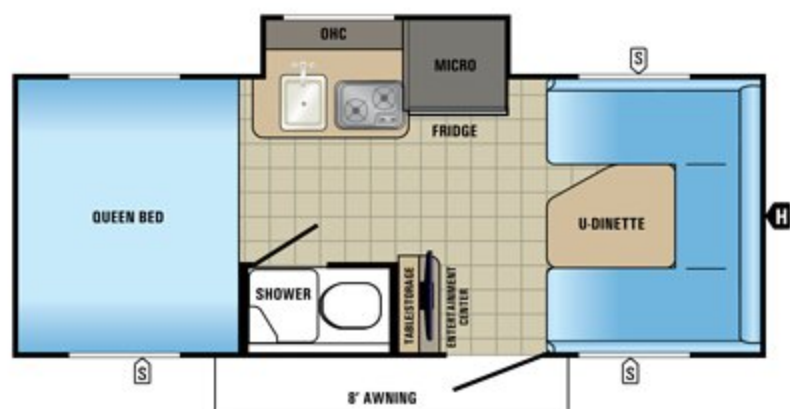


17RK BAJA EDITION



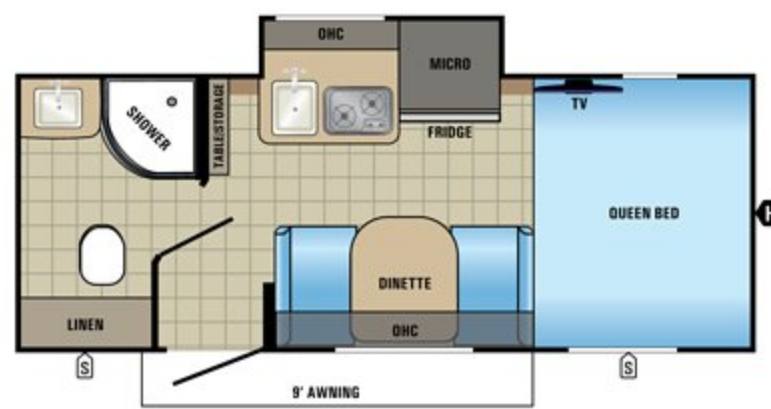


FLOORPLANS



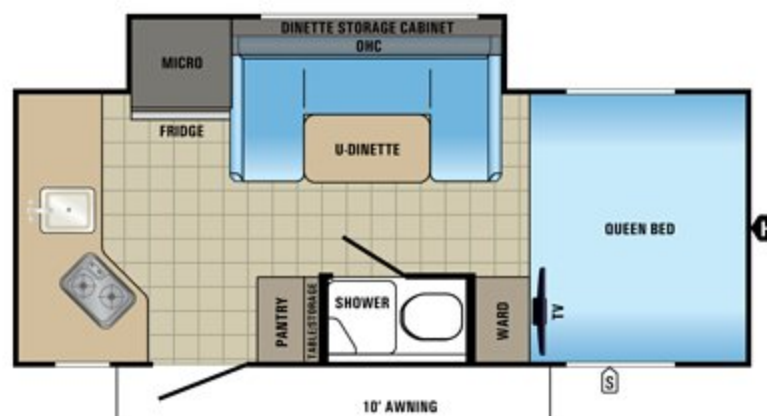
HUMMINGBIRD | 17FD

Ext. Length: 19' 9" Travel Ht.: 109" Unloaded Wt. (lbs.): 2,715 Sleeps: 3-4



HUMMINGBIRD | 17RB

Ext. Length: 19' 9" Travel Ht.: 109" Unloaded Wt. (lbs.): 2,725 Sleeps: 3



HUMMINGBIRD | 17RK

Ext. Length: 19' 9" Travel Ht.: 109" Unloaded Wt. (lbs.): 2,910 Sleeps: 3-4

SPECS

MODELS		DIMENSIONS			WEIGHT (LBS.)				TANKS (GALS.)		
FLOORPLAN	EXTERIOR TRAVEL LENGTH	EXTERIOR WIDTH	EXTERIOR HEIGHT (WITH A/C)	INTERIOR HEIGHT	UNLOADED VEHICLE WEIGHT	DRY HITCH WEIGHT	GROSS VEHICLE WEIGHT RATING	CARGO CARRYING CAPACITY	FRESH WATER CAPACITY (INCLUDES WATER HEATER)	GREY WASTE WATER CAPACITY	BLACK WASTE WATER CAPACITY
17FD	19' 9"	97"	109"	78"	2,715	290	3,750	1,035	31.6	25.4	25.4
17RB	19' 9"	97"	109"	78"	2,725	270	3,750	1,025	31.6	25.4	25.4
17RK	19' 9"	97"	109"	78"	2,910	325	3,750	840	31.6	25.4	25.4

Unloaded Vehicle Weight (UVW): Sometimes referred to as "Dry Weight," UVW means the typical weight of this trailer as built at the factory. The UVW, as used in product literature and other promotional materials, does not include cargo, fresh water, propane, options or dealer-installed accessories.

Gross Vehicle Weight Rating (GVWR): GVWR means the maximum permissible weight of the trailer, including the UVW plus passengers, personal items, all cargo, fluids, options and dealer-installed accessories. The GVWR is equal to or greater than the sum of the UVW and the CCC.

Cargo Carrying Capacity (CCC): CCC means the maximum weight of all passengers, personal items, food, fresh water, propane, tools, other cargo and dealer-installed accessories that can be carried by the trailer. CCC is equal to or less than GVWR minus UVW. The addition of options will decrease the CCC.

Hitch Weight (HW): The hitch weight, as used in product literature and other promotional materials, does not include cargo, fresh water, propane gas, options or dealer-installed accessories. The addition of these types of items will either add to or subtract from the stated hitch weight.

It is important for your safety and enjoyment that your tow vehicle be adequately sized and equipped to tow and handle the GVWR of the RV you select. Review weights and rating of your tow vehicle and consult a competent advisor for questions or advice. Whether you are new to RVing or a veteran, get a feel for the performance of your tow vehicle before heading out on the roadways. When you tow an RV, you must drive differently than when you drive a single vehicle. Practice hooking up, driving, backing up and braking in a safe environment or seek out professional instruction. Jayco affixes a weight label to each RV which lists weight information for that vehicle. See specifications chart above.

STANDARDS AND OPTIONS

STANDARD EXTERIOR EQUIPMENT

Aerodynamic, rounded profile with front and rear black diamond plating
 Graphics package with 2-colored sidewall
 TuffShell™, vacuum-bonded laminated floor, roof and sidewalls with wrapped aluminum cage front and rear wall
 Norco® NextGen frame with integrated A-frame
 Single axle with rubber-torsion suspension
 G20 tinted safety-glass windows
 Marine-grade exterior speakers (2)
 Nitrogen-filled radial tires
 Impact-resistant powder-coated, black aluminum fenders
 U-channel drip rail over slideout
 30-amp service with detachable power cord
 20-pound propane bottle with auto regulator with cover
 Outside grill propane quick-disconnect port
 Exterior TV bracket with cable and satellite hookups
 Rear camera backup prep
 26-inch-wide entry doors with gas-strut and frosted window
 LED brake lights
 25.5-gallon fresh water, black and grey tanks
 Aluminum entry step(s)

STANDARD INTERIOR EQUIPMENT

Folding 2-foot x 4-foot picnic table with interior storage compartment
 Screwed-and-glued cabinetry
 Smoked glass decorative inserts (select overhead cabinets)
 Ball-bearing drawer glides with 75-pound capacity
 LED lighting throughout
 2-burner cooktop
 Plywood dinette and bed bases
 High-density dinette cushions with vinyl backing
 Jayco-exclusive Simmons® mattress with bedspread and pillows
 2.1-amp USB port in all models
 Decorative window treatments with pleated nightshades

CUSTOMER VALUE PACKAGE

Aluminum wheels
 Solar-ready
 Self-adjusting electric brakes
 4 stabilizer jacks with pads
 6-gallon gas/electric DSI water heater
 Folding assist handle
 Black tank flush
 Outside shower

3-cubic-foot 2-way Norcold® refrigerator

18,000-BTU Atwood furnace

AM/FM/CD/DVD/Bluetooth® stereo with speakers

Convection microwave

Power awning with LED light

OPTIONS

24-inch LED TV

Low-profile 13,500-BTU A/C (mandatory)

Baja Package: 15-inch off-road mud tires, 5-inch clearance and double entry step

Electric tongue jack

Spare tire

2-bike carrier rack (A-frame-mounted)

Exterior grill

Enclosed underbelly with Astro-Foil™ insulation

THE ALL-NEW HUMMINGBIRD: ULTRA LIGHT FOR BIG-TIME FUN

The latest addition to the towable lineup is built with all the features that set Jayco apart—durability, reliability and strength in a lightweight package—for peace of mind that makes camping heavy on fun.



1. **Vacuum-bonded floor, sidewalls and roof** for better protection from the elements
2. **Norco® frame** with integrated A-frame prevents the hitch from buckling
3. **Power awning with multi-colored LED lights**
4. **Optional A-frame-mounted 2-bike carrier**
5. **2,715 to 2,910 pounds in unloaded vehicle weight** for comfortable towing
6. **6-gallon gas/electric DSI water heater**
7. **LED interior lighting throughout**
8. **Aluminum entry step(s)**
9. **26-inch entry door with frosted glass privacy window**
10. **Exterior TV bracket with 110V and cable outlet**
11. **Solar prep** makes efficient, environmentally friendly camping a breeze
12. **Optional Sway Command™ electronic sway control** reduces the chance of dangerous sway events



Meet your Jayco Dealer



We work hard—so you can play hard. From finding the perfect Jayco for your family to providing flexible financing options and full-service support, we're here to help.

Follow Jayco



Jayco, Inc., P.O. Box 460, Middlebury, IN 46540, www.jayco.com See dealer for further information and prices. All information in this brochure is the latest available at the time of publication approval. Jayco reserves the right to make changes and to discontinue models without notice or obligation. Photos in this brochure may show optional equipment and props for photography purposes. RVs built for sale in Canada may differ to conform to Canadian codes. ©2016 Jayco, Inc. 274734 0616-70K Printed in U.S.A.

Travel with Confidence



At Jayco, we build our RVs to handle every adventure, then back it with our industry-leading 2-year limited warranty. We, with support from our select partners, have you covered for **2 camping seasons**. That's **730 days**. You won't find a better warranty in the business, because the only strings we attach are those that deliver the ultimate in reliability. That's the Jayco difference. So go explore. We have the warranty that will follow you anywhere. For a copy of our 2-year limited warranty with complete terms and conditions, please contact your local Jayco dealer.



A year's access to Coach-Net™—the country's largest RV emergency road service.

eco advantage™

Jayco's long-term commitment to generations of family fun

After five years of increased efforts to eliminate waste, conserve energy and increase recycling, we've come a long way in building RVs that are not only better for your family—but also better for the planet.

Learn more at Jayco.com/EcoAdvantage