

A NEW ERA IN ULTRA LITES

# BULLET

ESSENTION

*Ultra Lite*

by Keystone



**DSI**

Annual RVDA DEALER  
SATISFACTION INDEX  
AWARD WINNER  
5 years IN A ROW

[www.keystonev.com/Bullet](http://www.keystonev.com/Bullet)

 Keystone RV  
Company





**BULLET 287QBS SHOWN IN SADDLE DECOR**



***EASY TO TOW WITH THE NEW MORE FUEL EFFICIENT CROSSOVERS, CARS AND TRUCKS, THE BULLET ULTRA LITE TRAVEL TRAILER HERALDS IN A NEW GENERATION OF RVs.***

*Sleek and smooth on the outside and loaded with features and conveniences inside, the new Bullet Ultra Lite will set you free to explore the open road.*

[www.keystonerv.com/Bullet](http://www.keystonerv.com/Bullet)

***BULLET***  
*Ultra Lite*  
by Keystone

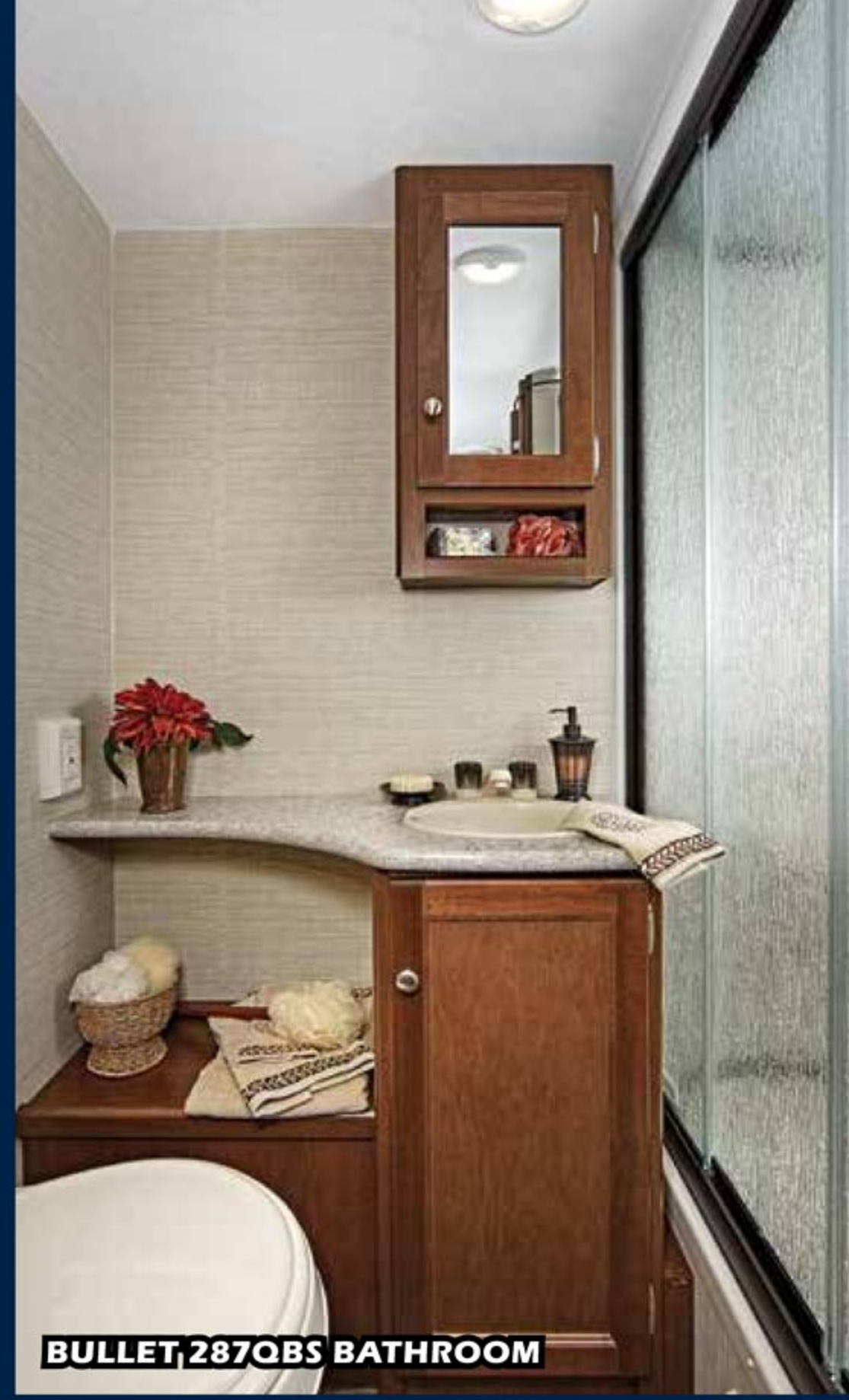


**BULLET 287QBS KITCHEN STORAGE**





**BULLET 287QBS BUNK ROOM WITH POCKET DOORS**



**BULLET 287QBS BATHROOM**



**EXTERIOR KITCHEN**  
**(AVAILABLE ON 243BHS, 274BHS, 287QBS, 308BHS, 311BHS)**





**THE INDUSTRY'S FIRST LUXURY  
ULTRA LITE NOW HAS DEEPER  
SLIDES AND MORE FEATURES!**

**← 3 FEET WIDE! →**

**REVERSIBLE  
DINETTE CUSHIONS**



**BULLET 248RKS SHOWN IN CHARCOAL DECOR**



**BULLET 248RKS KITCHEN SHOWN IN CHARCOAL DECOR**

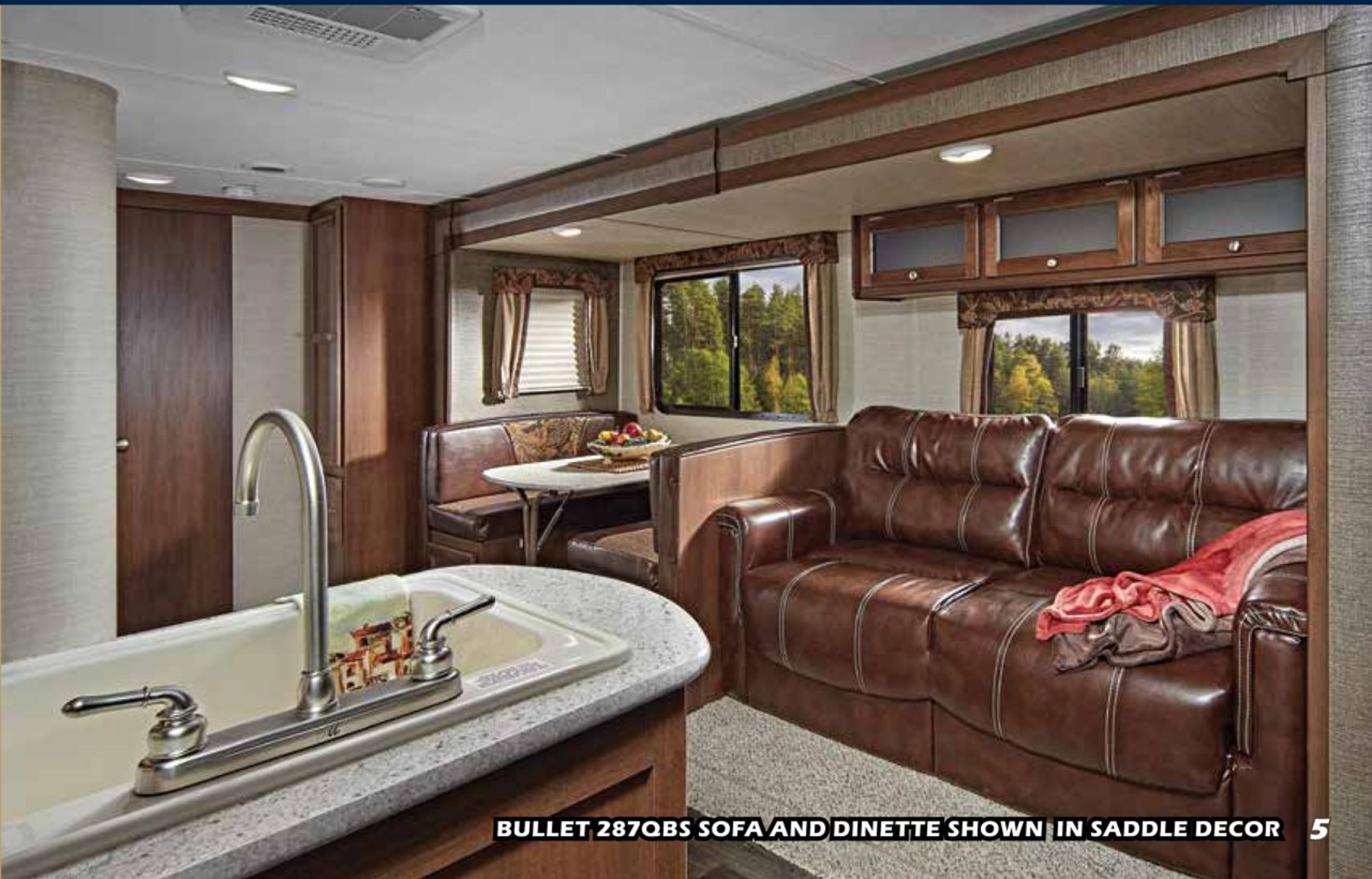
**CONVENIENCE,  
COMFORT & STYLE**



**LAUNDRY CHUTE IN EVERY  
BULLET FLOOR PLAN**



**BULLET 287QBS BEDROOM WITH POCKET DOORS SHOWN IN SADDLE DECOR**



**BULLET 287QBS SOFA AND DINETTE SHOWN IN SADDLE DECOR**



# BULLET'S TOP FEATURES



Bullet is the only ultra lite travel trailer to offer the following climate control features in all floor plans:

BULLET	COMPETITION
Enclosed underbelly	Exposed Tanks
2" pipes off of furnace with forced air into underbelly and radiant heat	Radiant heat Only
30,000 BTU Furnace	20,000 - 25,000 BTU Furnace
Ducted Heat and A/C	Non Ducted Heat and A/C

- 6 cu. ft. Refrigerator
- Exterior Kitchen (243BHS, 287QBS, 308BHS, 311BHS)
- Laundry Chute in Master Bedroom
- Labeled Systems Monitor Panel
- Blackout Shades in Bunk Rooms
- Storage Underneath the Bed in Master Bedroom



Includes more standard features that matter in light weight travel trailers.



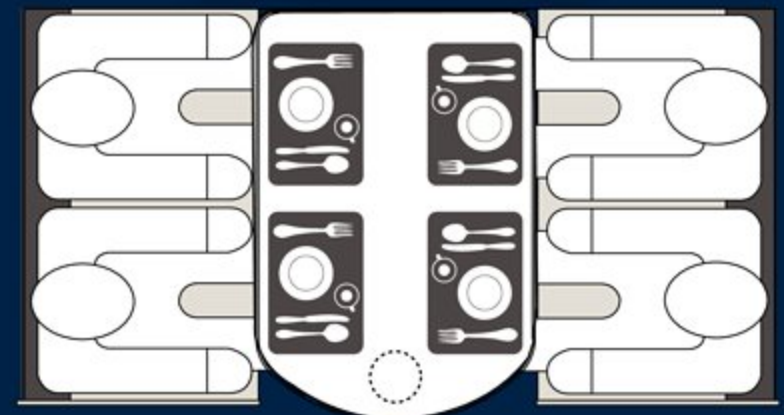
- 7. Gas Struts on Entry Doors
- 8. 9" Deep Single Basin Kitchen Sink (N/A 220RBI, 311BHS)
- 9. Largest Pass-Thru Storage in Class (40.3 cu. ft.)
- 10. CD/DVD/AM/FM/MP3/Bluetooth Stereo
- 11. Electric Adjustable Awning with LED Lighting
- 12. Hot/Cold Exterior Shower

# COMPARISON



**LARGE BOOTH DINETTE  
W/REVERSIBLE CUSHIONS**

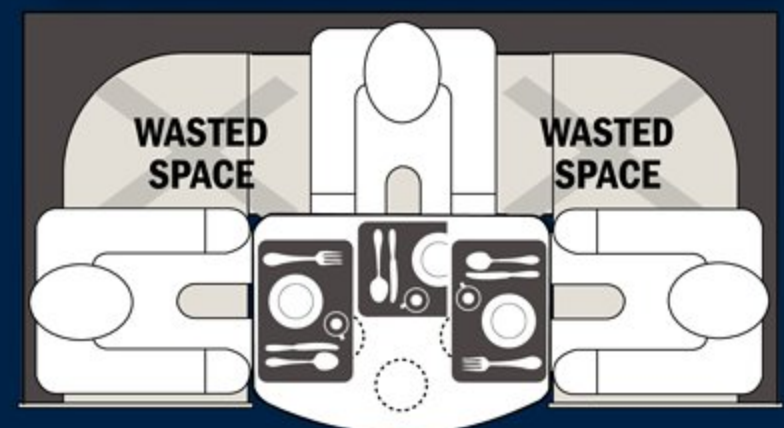
## BULLET



**COMFORTABLY  
SEATS 4 ADULTS**

- PLENTY OF ROOM FOR 4 PLACEMATS
- ONLY NEEDS ONE TABLE SUPPORT
- CONVERTS TO 80" BED

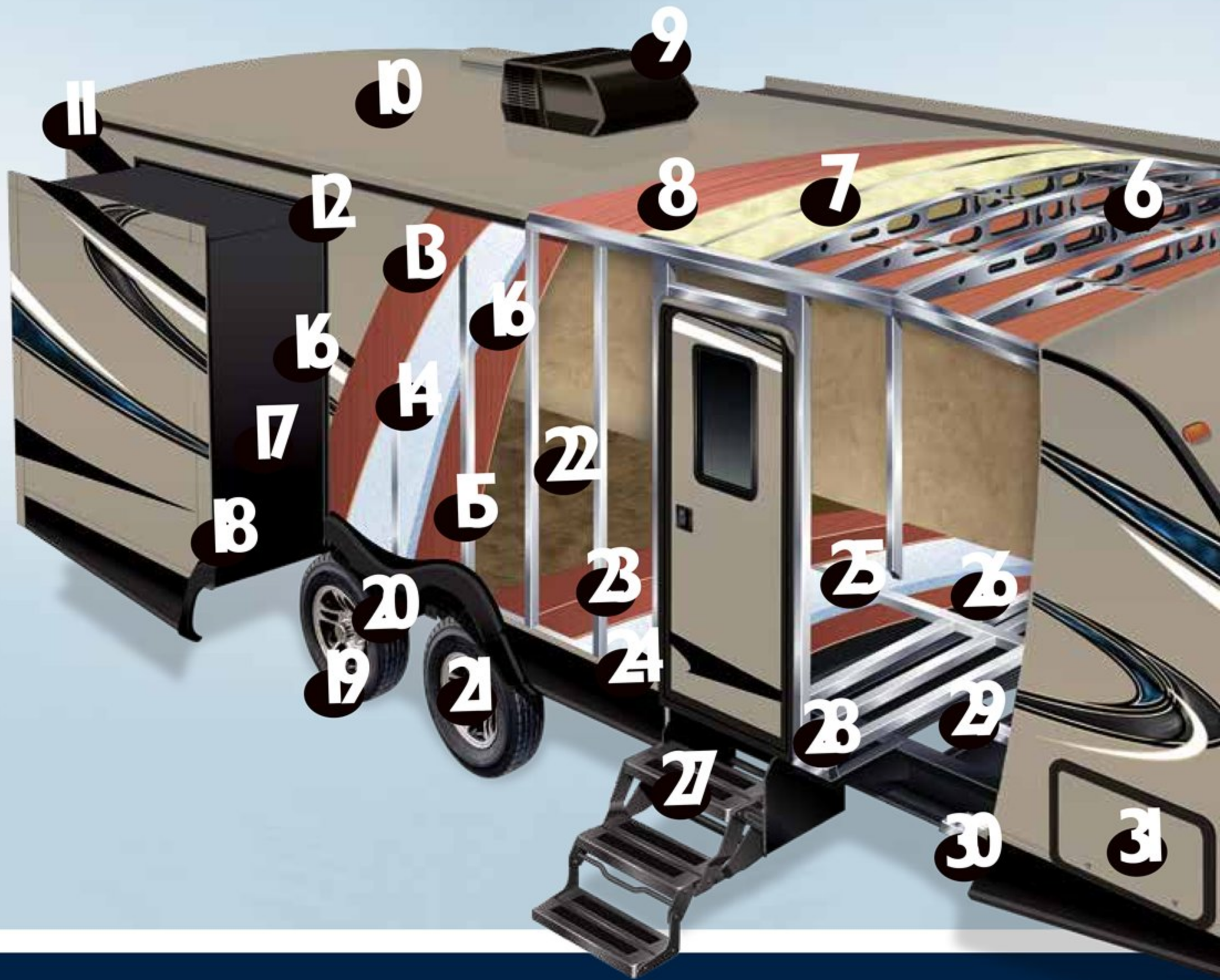
## COMPETITION



**DON'T BE FOOLED!  
ONLY SEATS 3 ADULTS**

- ONLY ENOUGH ROOM FOR 2.5 PLACEMATS
- 3 PEDESTAL SUPPORTS REDUCE LEG ROOM
- ALSO CONVERTS TO 80" BED





# **BEST TOWING TRAVEL TRAILER IN THE INDUSTRY**

*Increased MPG and Easier to Tow*



## **REAR FAIRING ANGLE**

Increases efficiency of wind flow underneath and behind the trailer



## **ENCLOSED UNDERBODY**

Eliminates turbulence caused by exposed frame members, holding tanks, plumbing etc.



## **WIDER BASE STABILIZER**

Wider base greatly reduces sway and bouncing

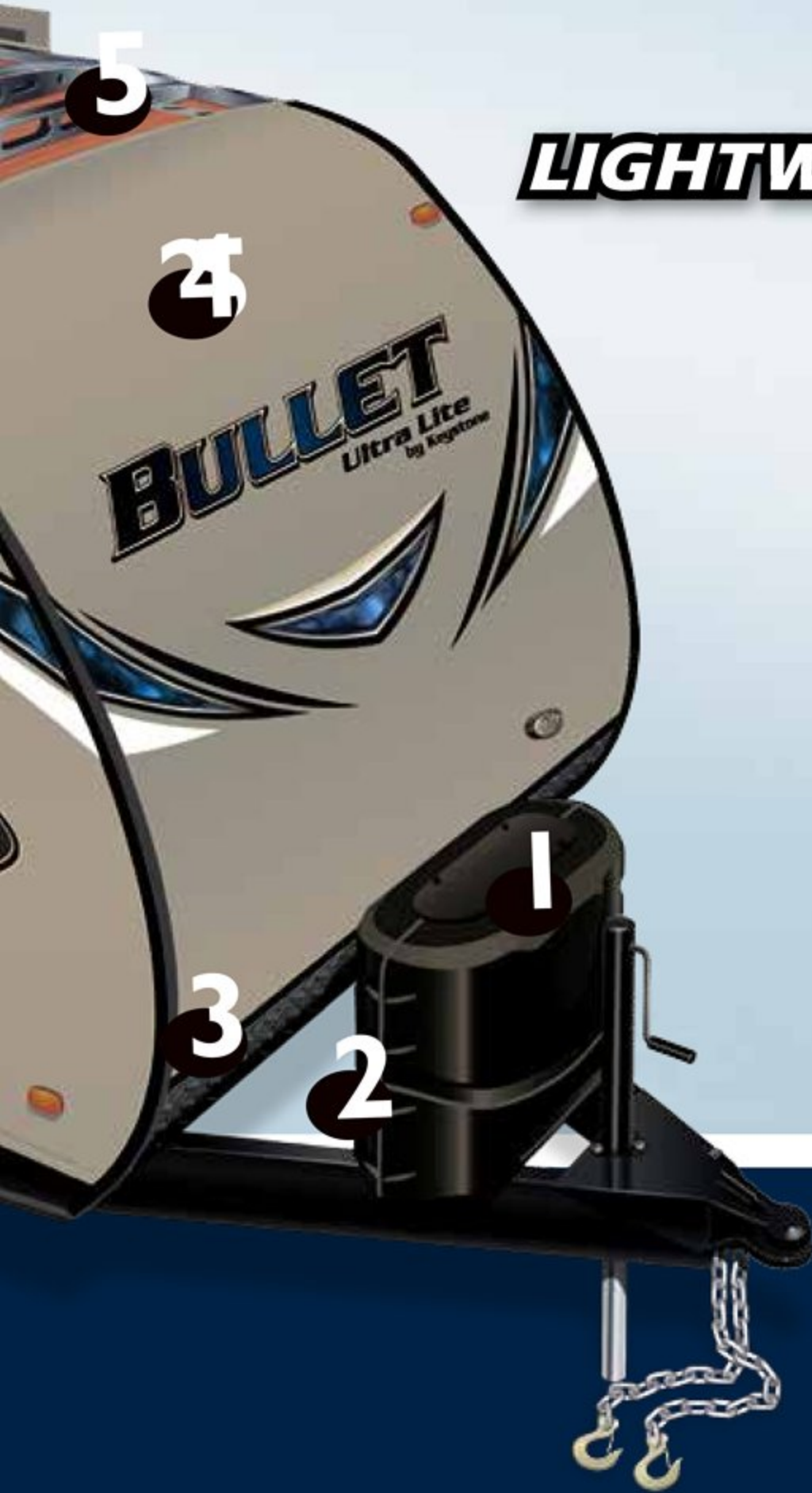


www.keystone.com/Bulet

# BULLET

Ultra Lite  
by Keystone

## LIGHTWEIGHT SOLID CONSTRUCTION



- |  |  |
|--|--|
| 1. Quick Access LP Cover                           | 16. Decorative Interior Wall Board   |
| 2. Integrated Dual Battery Tray                    | 17. Aluminum Frame Slide Boxes   |
| 3. Diamond Plate Stone Guard                       | 18. Bullet's Multi Seal and Track Slide System                             |
| 4. Aerodynamic Front Profile                       | 19. Radial Tires with Electric Brakes (4)                                  |
| 5. Hurricane Straps                                | 20. Wide Stance Axle System  |
| 6. 5" Radius Galvanized Stamped Steel Roof Trusses | 21. Easy Lube Axles  |
| 7. Fully Insulated Roof                            | 22. Residential Stain Resistant Trek Linoleum (resistant to cold cracking) |
| 8. Durable Roof Decking                            | 23. Plyvener Floor Decking (water resistant)                               |
| 9. 13.5 Quick Cool Air Conditioning                | 24. Hi-Density In Floor Block Foam Insulation                              |
| 10. One Piece TPO Roof                             | 25. Double Welded Aluminum Floor Joists                                    |
| 11. Full Length Rain Gutter and 4" Drip Spouts     | 26. 3rd Layer Floor Decking  |
| 12. Smooth Fiberglass Exterior                     | 27. Radius Triple Entry Steps  |
| 13. 1/8" Luan Wall Backing                         | 28. 6.5" - 10" Steel I-Beam Frame  |
| 14. Hi-Density Block Foam Insulation               | 29. Darco Moisture Barrier Wrap  |
| 15. 1 1/2" Box Welded Aluminum Frame Structure     | 30. Heated and Enclosed Underbelly   |
|  | 31. Aluminum Framed Pass-Thru Storage                                      |



### SAFETY ON WHEEL

Our lightweight floor plans are 1000-1500 lb. lighter than comparable competitors trailers



### RADIAL FRONT PROFILE

The radius front profile of the Bullet travel trailer gives the optimal contour to reduce wind resistance when traveling down the road.





**220RBI**

[www.keystonerv.com/Bullet](http://www.keystonerv.com/Bullet)  
**BULLET**  
*Ultra Lite*  
 by Keystone



**243BHS**



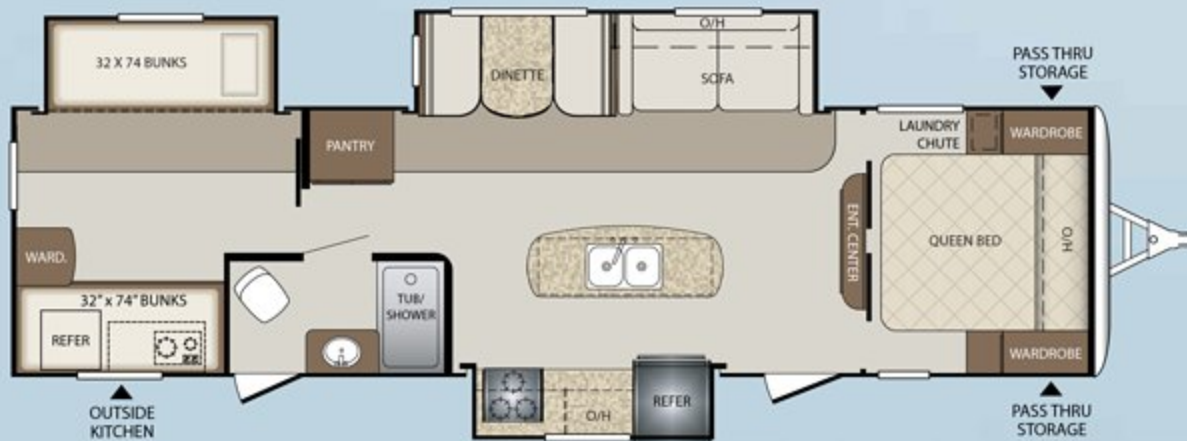
**248RKS**



**272BHS**



**274BHS**



**311BHS NEW**



**335BHS**

Product information is as accurate as possible at the date of publication of this brochure. Features, floor plans, and specifications are subject to change without notice. Please also consult Keystone's web site at [keystonerv.com](http://keystonerv.com) for more current product information and specifications. Tow Vehicle Disclaimer. CAUTION: Owners of Keystone recreational vehicles are solely responsible for the selection and proper use of tow vehicles. All customers should consult with a motor vehicle manufacturer or their dealer concerning the purchase and use of suitable tow vehicles for Keystone products. Keystone disclaims any liability or damages suffered as a result of the selection, operation, use or misuse of a tow vehicle. KEYSTONE'S LIMITED WARRANTY DOES NOT COVER DAMAGE TO THE RECREATIONAL VEHICLE OR THE TOW VEHICLE AS A RESULT OF THE SELECTION, OPERATION, USE OR MISUSE OF THE TOW VEHICLE. \*Length is defined as the distance from the centerline of the hitch pin/coupler to rear bumper of the trailer.





# TRAVEL TRAILER FLOOR PLANS

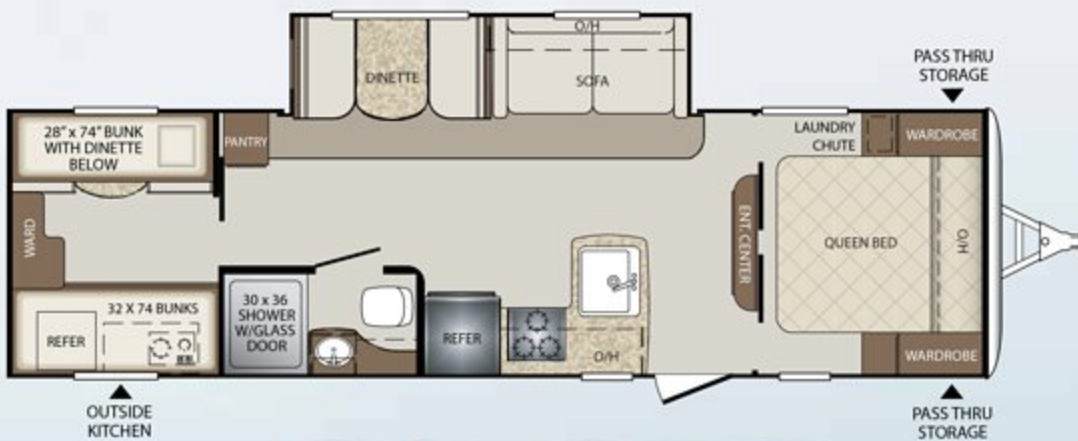
You'll find a Bullet floor plan to fit your lifestyle perfectly.



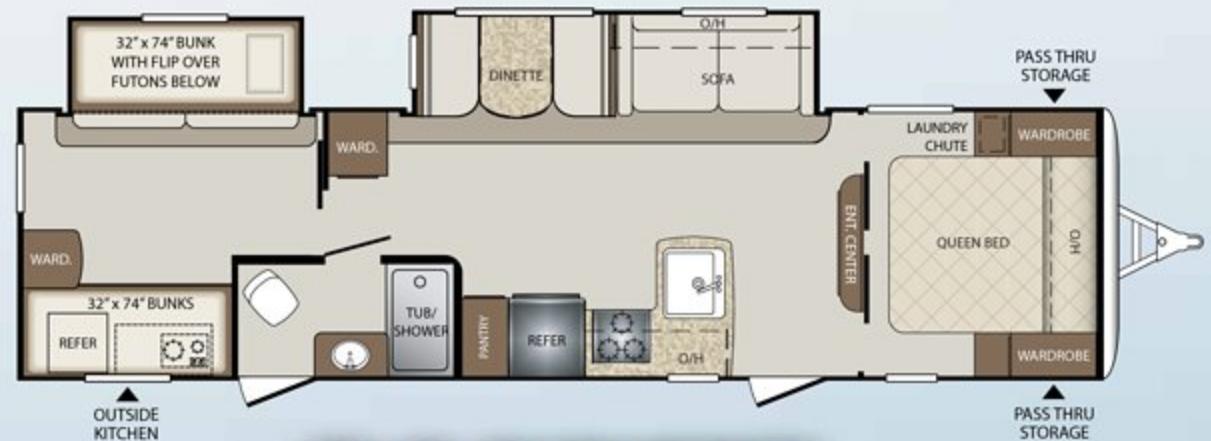
**251RBS**



**269RLS**



**287QBS**



**308BHS**

## WEIGHTS & MEASUREMENTS

MODEL	SHIPPING WEIGHT	CARRYING CAPACITY	HITCH	LENGTH*	HEIGHT	FRESH WATER	WASTE WATER	GRAY WATER	LPG	AWNING
220RBI	4611	1789	450	25' 7"	10' 7"	43	30	30	40	15'
243BHS	4703	1797	555	27' 10"	10' 7"	43	30	30	40	19'
248RKS	4859	1641	535	28' 10"	10' 7"	43	30	60	40	15'
251RBS	4963	2037	500	29' 1"	10' 7"	43	30	30	40	14'
269RLS	5193	2392	585	30' 11"	10' 7"	43	30	30	40	15'
272BHS	5068	2472	540	30' 9"	10' 7"	43	30	30	40	15'
274BHS	5095	2490	585	30' 9"	10' 7"	43	30	30	40	20'
287QBS	5477	2123	695	32' 10"	10' 7"	43	30	30	40	15'
308BHS	5980	1620	700	35' 6"	10' 8"	43	30	30	40	19'
311BHS	6880	1920	865	35' 8"	11'	43	30	60	40	19'
335BHS	6506	2094	865	37'	11'	43	30	30	40	15'



# STANDARDS & OPTIONS

## CONSTRUCTION STANDARDS

- Aggressive Front Profile for Increased Towability
- Aluminum Framed Front, Rear, and Side Walls
- Aluminum Framed Slideouts
- Laminated Fiberglass Exterior Side Walls
- 2" Thick Laminated Aluminum Floor
- In-Frame Fresh, Grey, and Black Water Tanks
- 6.5" - 10" Steel I-Beam Frame with Welded Outriggers
- 1/4" ABS Enclosed Underbelly
- Darco Moisture Barrier
- One Piece TPO Roof
- E-Z Lube Axles
- Electric Brake System (4 wheels)
- R-11 Insulation in Floor
- R-7 Insulation in Sidewalls
- R-11 Insulation in Roof

## EXTERIOR CAMPING PACKAGE

- Wide Stance E-Z Lube Axles
- 6 Gallon Gas/Electric DSI Water Heater with quick recovery
- Radius Entry Door with Gas Strut
- Outside Speakers
- Outside Shower (Hot & Cold Water)
- Tinted Safety Glass Windows
- 4 Stabilizer Jacks
- TV Antenna & Cable/Satellite Hook-Up
- Electric Awning with LED Lights and Adjustable Arms
- Radial Tires

## EXTERIOR FEATURES

- Black Tank Flush
- Dual Propane Tanks with Cover
- Front Diamond Plate
- In Frame Dual Battery Rack
- Oversized Exterior Pass Thru Storage with Lighting
- Contoured Fender Skirts for Increased Air-Flow
- LP Quick Connect
- Spare Tire
- Extended 4" Down Spouts
- Triple Entry Steps
- Oversized Grab Handle
- Aluminum Wheels

## INTERIOR CAMPING PACKAGE

- 13.5 BTU Ducted A/C
- Night Shades
- CD/DVD/AM/FM Bluetooth Stereo with Aux and I-Pod Hookup
- 32" LED TV
- Microwave
- 6 cu./ft. Double Door Refrigerator
- 3 Burner High Output Range
- 9" Deep Oversized Single Basin Sink with High Rise Faucet (N/A 220, 311)
- Glazed Hardwood Cabinet Doors
- Foot Flush Toilet
- Tub Surround with Shelves
- Full Extension Drawer Glides

## INTERIOR FEATURES

- 78" Interior Height
- Fiberglass Reinforced Flooring
- Residential Style Furniture
- Water Heater-By-Pass for Winterization
- Night Shades in Living Area
- 17" Oven
- Radius Dinette
- Interior LED Lights

## BATHROOM

- Towel Hooks
- Deluxe Curved Shower Curtain
- Power Vent Fan
- Solid Wood Medicine Cabinet
- Linen Storage

## MASTER BEDROOM

- Upgraded Foam Mattress
- Dual 110V Outlets
- Mirrored Wardrobes
- Laundry Chute
- Under Bed Storage
- Full Blackout Window Treatments
- Individual LED Reading Lights
- Hardwood Entry Doors

## BUNK ROOMS

- Cable & TV Hookups (Per Floor Plan)
- Full Blackout Window Treatments
- Oversized Wardrobe with Rod (Some Floor Plans)
- Wood Pocket Doors

## THERMAL PACKAGE

- Ducted Heat & Enclosed Underbelly
- 2" Duct off of Furnace to Underbelly
- 30K BTU Furnace
- Residential Heat Ducts



## SAFETY EQUIPMENT

- Carbon Monoxide Detector
- Smoke Alarm
- Fire Extinguisher
- Electric Brakes
- Safety Chains
- Tinted Safety Glass Windows
- Egress Windows (Fire Escape)
- GFI Electrical Outlets

## OPTIONS

- 15K A/C
- 50 AMP Service with 2nd A/C (308, 311, 335 Only)
- Bumper Mounted Aussie Grill (N/A 287, 308)
- Tri-Fold Sofa (N/A 220, 243)



Go RVing  
Life's A Trip™



YOUR LOCAL DEALER:

LEARN MORE



[www.keystonerv.com/Bullet](http://www.keystonerv.com/Bullet)  
**BULLET**  
Ultra Lite  
by Keystone

 **Keystone RV Company**  
[www.keystonerv.com](http://www.keystonerv.com)

2642 Hackberry Drive | PO Box 2000  
Goshen, IN 46527-2000  
(574) 535-2100

NOVEMBER 2015