

# RETREAT

// DESTINATION TRAILERS //



**Keystone RV  
Company**

*The  
Great*  
INDOORS

KEYSTONERV.COM/RETREAT





When Cole Davis founded Keystone RV in 1996 his vision was clear: Build a quality RV loaded with features priced thousands less than other RVs on the market. To accomplish his goal, Cole would recruit and build a strong team, focus on keeping overhead low, and empower the people closest to the customer to make decisions. Within a few short months after opening the doors, Keystone produced its very first camper. Delivering big on quality, features and value.

As customers appetite skyrocketed, new Keystone models were added to satisfy growing customer demand. Along with this tremendous growth came the need for expanded production. To meet this need, more manufacturing plants were built and staffed. By the beginning of 2000, Keystone was leading the industry in fifth wheel and trailer sales. Today, Keystone RV Company has grown to encompass over 1 million square feet of manufacturing space with facilities in Goshen, Indiana and Pendleton, Oregon. While Keystone is no longer the small "start up" we once were, our mission has remained true to Cole's vision—"Do the job right and make sure we deliver a quality product every time."



**Keystone RV  
Company**



# RETREAT

*by Keystone*

**LUXURY PACKAGE**

AVAILABLE ON ALL MODELS

LUXURY COMES STANDARD \ COMFORT AND LUXURY FOR THE WHOLE FAMILY



SOLID SURFACE COUNTERTOPS WITH STAINLESS STEEL  
UNDER MOUNT SINK AND CHEF FAUCET



CHAMPAGNE LAMINATED SIDEWALL WITH UPGRADED GRAPHICS PACKAGE



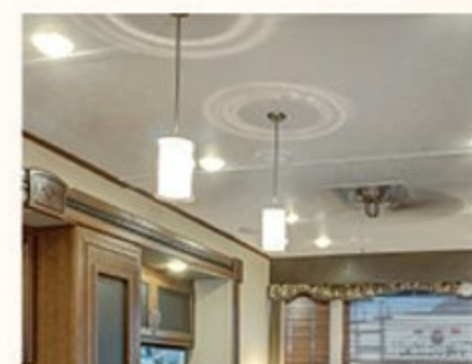
HEATED ENCLOSED UNDERBELLY



STAINLESS STEEL APPLIANCE  
PACKAGE



OPTIONAL DUAL PANE GLASS



UPGRADED INTERIOR  
LIGHTING PACKAGE

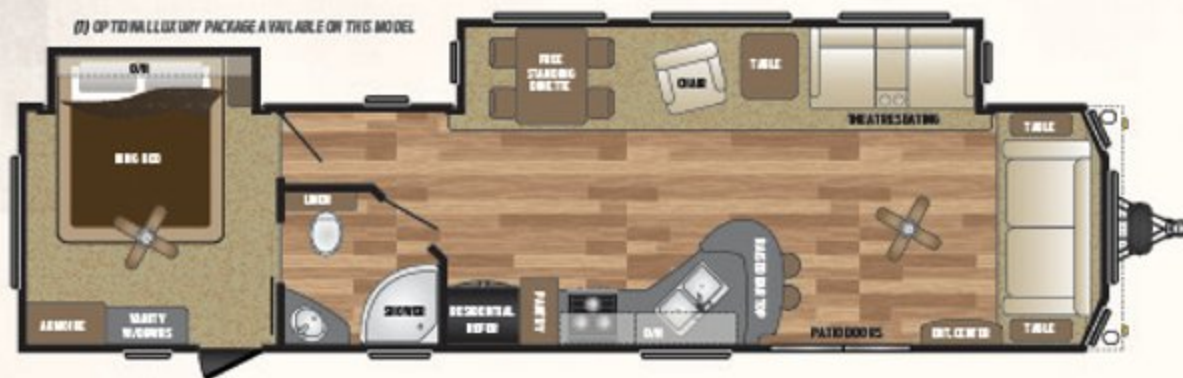




WEIGHT 11899 LENGTH 40' 3" **39BHQS/391BHQS**



WEIGHT 11142 LENGTH 40' 8" **39BHTS/391BHTS**



WEIGHT 10216 LENGTH 40' 11" **39FDEN/391FDEN**



WEIGHT 10662 LENGTH 40' 2" **39FKSS/391FKSS**

| MODEL     | SHIPPING WEIGHT | CARRYING CAPACITY | HITCH WEIGHT | EXT LENGTH* | EXT HEIGHT | FRESH WATER | WASTE WATER | GREY WATER | LPB |
|-----------|-----------------|-------------------|--------------|-------------|------------|-------------|-------------|------------|-----|
| 39(1)BHQS | 11899           | 1506              | 1405         | 40' 3"      | 12' 7"     | 53          | 78          | 78         | 60  |
| 39(1)BHTS | 11142           | 2048              | 1190         | 40' 8"      | 12' 7"     | 53          | 39          | 78         | 60  |
| 39(1)FDEN | 10216           | 2899              | 1115         | 40' 11"     | 12' 7"     | 53          | 39          | 78         | 60  |
| 39(1)FKSS | 10662           | 2693              | 1355         | 40' 2"      | 12' 7"     | 53          | 39          | 78         | 60  |
| 39(1)MKTS | 11384           | 2541              | 1925         | 40' 8"      | 12' 7"     | 53          | 39          | 71         | 60  |
| 39(1)LOFT | 11985           | 2015              | 1725         | 40' 8"      | 13' 5"     | 53          | 39          | 71         | 60  |
| 39(1)RLTS | 11334           | 2221              | 1555         | 40' 5"      | 12' 7"     | 53          | 39          | 71         | 60  |

DISCLAIMER: Product information is as accurate as possible as of the date of publication of this brochure. All features, floor plans, and specifications in this brochure are subject to change without notice. Please also consult Keystone's web site at [www.keystonerv.com](http://www.keystonerv.com) for more current product information and specifications. Tow Vehicle Disclaimer. CAUTION: Owners of Keystone recreational vehicles are solely responsible for the selection and proper use of tow vehicles. All customers should consult with a motor vehicle manufacturer or their dealer concerning the purchase and use of suitable tow vehicles for Keystone products. Keystone disclaims any liability or damages suffered as a result of the selection, operation, use or misuse of a tow vehicle. KEYSTONE'S LIMITED WARRANTY DOES NOT COVER DAMAGE TO THE RECREATIONAL VEHICLE OR THE TOW VEHICLE AS A RESULT OF THE SELECTION, OPERATION, USE OR MISUSE OF THE TOW VEHICLE. \*Length is defined as the distance from the centerline of hitch pin/coupler to rear bumper of trailer. 01.17



**RE-DESIGNED**



WEIGHT 11384 LENGTH 40' 8"

**39MKTS/391MKTS**

**RE-DESIGNED**



WEIGHT 11985 LENGTH 40' 8"

**39LOFT/391LOFT**

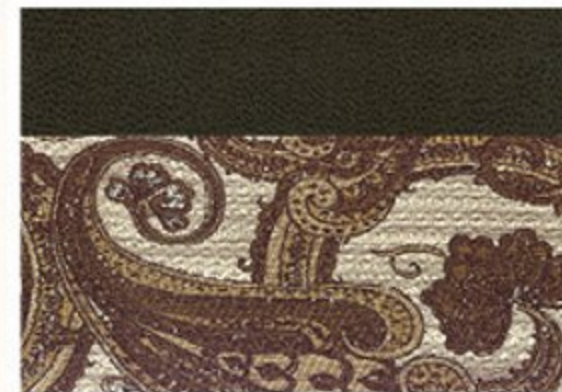
**NEW**



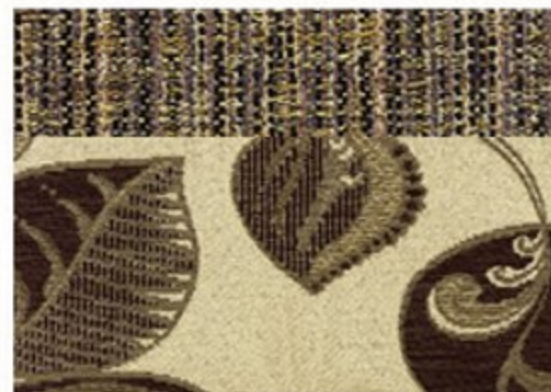
WEIGHT 11334 LENGTH 40' 5"

**39RLTS/391RLTS**

**DECOR  
OPTIONS**



CEDAR DECOR



SILVER BIRCH DECOR



TIMBER DECOR

## STAY IN TOUCH



Retreat is always just a touch away. You'll find 360 virtual tours, location of your nearest dealer, photos, videos and all of the latest information about Retreat. Everything you need can be accessed anytime, day or night, from home or on the road. You can also find us on the Keystone RV Facebook.





## ***ALL NEW FEATURES***

- » **New 39RLTS Floorplan**
- » **Redesigned MKTS, LOFT**
- » **Standard Flush Floor Main Slide**
- » **New Sliding Dinette Table With Extension**
- » **Flip Up Storage Under Dining Chairs**
- » **LED Lighted Awning**
- » **Ceiling Fan In Living Room**
- » **Upgraded Cabinetry**
- » **New Upgraded Cabinet Hardware**
- » **New Interior Look**
- » **Standard Stainless Steel Sink**
- » **LED Interior lights Throughout**
- » **New Exterior Graphics**
- » **Huge Panoramic Windows**
- » **New Radius Shower**
- » **New Feature Wall With Wine Rack MKTS, RLTS, LOFT**
- » **New Walk In Pantry MKTS, RLTS, LOFT**
- » **Standard Heated/Enclosed Underbelly**





### LIVING ROOM HIGHLIGHTS

- 8' Ceiling height
- Solid wood slide room fascia
- 19' Slide room with cathedral ceiling on FDEN, FKSS
- 39" Main slide room depth
- Decorative plantation blinds in living area
- 72" sleeper sofa
- Fireplace
- 40" HD LED TV (Except 39MKTS, 39FDEN, 39LOFT)
- 50" HD LED TV (39MKTS, 39LOFT, 39RLTS)
- Theatre Seating (39MKTS, 39FDEN, 39LOFT)
- DVD/AM/FM/CD/MP3 Stereo system with Bluetooth
- 12 Volt Charging station
- Recliner (39FDEN, 39FKSS)
- Free standing dinette with four chairs
- Residential recessed ceiling lighting
- Ceiling fan with light (39FDEN & 39FKSS only)
- Wall sconce in slide room
- Etched glass overheads
- Dinette chandelier

### KITCHEN HIGHLIGHTS

- Extra large double bowl kitchen sink
- High rise faucet with pull out sprayer
- Residential "eat in" bar (FKSS, FDEN)
- Two bar stools (FKSS, FDEN)
- Waste basket storage
- Solid wood raised panel residential cabinets with crown molding
- Pre-drilled and screwed hardwood cabinet framing
- Residential ball bearing drawer guides
- Microwave with carousel
- Three burner range with oven
- 15 Cu. Ft. residential refrigerator
- Double door pantry
- Residential water purification system
- Upgrade central vacuum system

### BATH

- Porcelain Toilet with foot flush
- Neo-angle glass shower with surround
- Fantastic fan w/convenient wall mount control (N/A 39LOFT)
- Large medicine cabinet
- Louvered door on large closet
- Washer and dryer prep (N/A 39BHTS, 39BHQS, 39FDEN)
- Dressing mirror

### BEDROOM

- 7' Tall bed slide
- Pillow top king mattress (N/A 39BHTS, 39BHQS)

- Oversized bed slide w/overhead cabinets, accented w decorative cabinet doors & functional reading lights
- Mega storage under master beds
- Gas strut assisted bed lift
- Etched glass cabinet doors in the bed slide
- Two door wardrobe
- Fully extended deep dresser drawers
- Pleated shades
- Large panoramic window
- Residential ceiling fan
- Recessed decorative lighting
- Six panel interior bedroom doors
- Prep for 2nd TV

### EXTERIOR

- Fiberglass front
- Residential exterior soffit lights
- Dual 30 Lbs LP bottles with automatic change over and cover
- Large swing away grab handle
- 2 Exterior speakers
- Residential patio door with screen door
- Exterior shower
- 50 Amp detachable power cord
- Satellite / Cable TV hook-up
- 110 volt exterior outlets
- E-Coated Wheels
- Heated & Enclosed Underbelly

### MECHANICS

- 16 gallon gas/electric DSI water heater
- 40,000 BTU furnace
- 15,000 BTU ducted air conditioner
- Prepped for a second air conditioner
- 50 Amp electrical service with detachable cord
- 75 Amp converter
- 110 Volt outlets in the slides
- 12 Volt SHURflo® Water Pump

### CONSTRUCTION

- 12" Powder coated I-beam frame
- Darco wrapped main floor vapor moisture barrier
- 5/8" Seamless dyna span subfloor with limited lifetime warranty
- 2" Wall studs constructed 16" on center
- Laminated veneer lumber slideout reinforcements
- Reinforced slide room openings
- 4 1/2" Crowned roof
- Radius corner blocks around windows and compartment doors
- Metal floor registers

- Super frame reinforced frame

### SAFETY

- Safety chains
- Break away switch
- Electric brakes on all wheels
- Carbon monoxide detector
- LP detector
- Smoke detector
- GFI electrical outlets
- Tinted safety glass windows

### UNIQUE RETREAT FEATURES

- Large bay windows with decorative exterior front
- 8' Tall ceilings
- 102" wide body construction
- Detachable hitch
- Vaulted 19' slide out rooms (39FDEN & 39FKSS)
- Residential high end furniture
- King bed standard (Except 39BHTS, 39BHQS)
- "Eat in Bar" in every kitchen (N/A 39BHTS, 39BHQS, 39MKTS)
- Central vacuum
- Black tank flush

### RETREAT OPTIONS

- Electric patio awning
- Stabilizer jacks
- 2nd 13.5K BTU A/C
- Dual Pane Windows  
(Only Available with Luxury Package)

### Luxury Package (Optional)

- Champaign Laminated Sidewalls
- Upgraded Graphics Package
- Solid Surface Counter Tops
- Stainless Steel Under Mount Sink
- Chefs Gourmet Faucet
- Upgraded Interior Lighting Package
- Stainless Steel Appliance Package
- Heated and Enclosed Underbelly

Standard features and options are subject to change without notice.



# RETREAT

DESTINATION TRAILERS



HIDEOUT BRANDS ARE A PROUD RECIPIENT OF THE  
DEALER SATISFACTION QUALITY CIRCLE AWARD

*RIGHT FEATURES. RIGHT PRICE. RIGHT NOW.* [WWW.KEYSTONERV.COM/RETREAT](http://WWW.KEYSTONERV.COM/RETREAT)

## **BUY LOCALLY**

PURCHASING YOUR RV LOCALLY

It's up to you where you purchase your new Retreat, but may we suggest your local dealer? Not only does it help your local economy and provide jobs, but it will also give you an opportunity to develop a service relationship with someone that will come to know you and your coach. Congratulations on finding the best built, best equipped and best value in the industry. Happy travels!

YOUR LOCAL DEALER IS:

JANUARY 2017

DISCLAIMER: Product information is as accurate as possible as of the date of publication of this brochure. All features, floor plans, and specifications in this brochure are subject to change without notice. Please also consult Keystone's website at [www.keystonerv.com](http://www.keystonerv.com) for more recurrent product information and specifications. Tow Vehicle Disclaimer: CAUTION: Owners of Keystone recreational vehicles are solely responsible for the selection and proper use of tow vehicles. All customers should consult with a motor vehicle manufacturer or their dealer concerning the purchase and use of suitable tow vehicles for Keystone products. Keystone disclaims any liability or damages suffered as a result of the selection, operation, use or misuse of a tow vehicle. KEYSTONE'S LIMITED WARRANTY DOES NOT COVER DAMAGE TO THE RECREATIONAL VEHICLE OR THE TOW VEHICLE AS A RESULT OF THE SELECTION, OPERATION, USE OR MISUSE OF THE TOW VEHICLE. \*REFERENCE KEYSTONE RV COMPANY OWNERS MANUAL FOR LIMITED WARRANTY DETAILS. \*Length is defined as the distance from the centerline of hitch pin/coupler to rear bumper of trailer. 01.17



**Keystone RV  
Company**

[WWW.KEYSTONERV.COM](http://WWW.KEYSTONERV.COM)  
574.535.2100 • 2642 HACKBERRY DRIVE  
P.O. BOX 2000 • GOSHEN, IN 46527



Go RVing.