

2017 DIPLOMAT BY MONACO

COMMAND THE ROAD

2017 DIPLOMAT



REVGROUP



MONACO®

2017 DIPLOMAT BY MONACO

COMMAND THE ROAD

2017 DIPLOMAT



REV GROUP



MONACO®

BORN TO LEAD

A leader by design, the 2017 Monaco Diplomat is a power broker among luxury motor coaches. Thanks to impeccable forethought, the Diplomat anticipates every need, while a custom-tuned Roadmaster Chassis delivers unbridled power for those who yearn to command the road. There's a reason we call it the Diplomat ... some leaders simply have more influence on life.



BORN TO LEAD

A leader by design, the 2017 Monaco Diplomat is a power broker among luxury motor coaches. Thanks to impeccable forethought, the Diplomat anticipates every need, while a custom-tuned Roadmaster Chassis delivers unbridled power for those who yearn to command the road. There's a reason we call it the Diplomat ... some leaders simply have more influence on life.





DIPLOMAT 43S SHOWN IN MANHATTAN BRONZE III & ITALIAN SIENNA WOOD CABINETRY



DIPLOMAT 43S SHOWN IN MANHATTAN BRONZE III & ITALIAN SIENNA WOOD CABINETRY







UNNEGOTIABLE LUXURY

Your comfort should never be negotiated, so at Monaco Coach, only the finest luxuries suffice, starting with the Diplomat galley — a blend of sophistication and convenience. Solid-surface countertops and handcrafted hardwood cabinetry set the tone for elegance, while a countertop extension, adjustable shelves, induction cooktop and premium appliances bring out the Executive Chef in even the most amateur. Dining in has never felt this exclusive.





UNNEGOTIABLE LUXURY

Your comfort should never be negotiated, so at Monaco Coach, only the finest luxuries suffice, starting with the Diplomat galley — a blend of sophistication and convenience. Solid-surface countertops and handcrafted hardwood cabinetry set the tone for elegance, while a countertop extension, adjustable shelves, induction cooktop and premium appliances bring out the Executive Chef in even the most amateur. Dining in has never felt this exclusive.



BUILT TO LAST

Monaco Coach has commanded the luxury market for five decades. With this legacy of luxury comes a level of refinement that few can emulate. In short, we consider every coach an owner-influenced work of art. From handpicked fabrics to handcrafted cabinetry, and decorative crown molding to elegant porcelain tile, the Diplomat presents timeless style certain to win over your guests.



GLAZED DARK CHERRY



GLAZED ITALIAN SIENNA



BUILT TO LAST

Monaco Coach has commanded the luxury market for five decades. With this legacy of luxury comes a level of refinement that few can emulate. In short, we consider every coach an owner-influenced work of art. From handpicked fabrics to handcrafted cabinetry, and decorative crown molding to elegant porcelain tile, the Diplomat presents timeless style certain to win over your guests.



GLAZED DARK CHERRY



GLAZED ITALIAN SIENNA









OUR DESIGN INSPIRATION

THE DIPLOMAT

Naturally, the Diplomat — Monaco Coach's power broker — is dressed to impress. Rich leathers and warm tones embody the Manhattan Bronze décor, while Vapor Mist's palette of grays creates modern sophistication.

DIPLOMAT PAINT OPTIONS



DESERT MIRAGE



MANHATTAN BRONZE II



VAPOR MIST



OUR DESIGN INSPIRATION

THE DIPLOMAT

Naturally, the Diplomat — Monaco Coach's power broker — is dressed to impress. Rich leathers and warm tones embody the Manhattan Bronze décor, while Vapor Mist's palette of grays creates modern sophistication.

DIPLOMAT PAINT OPTIONS



DESERT MIRAGE



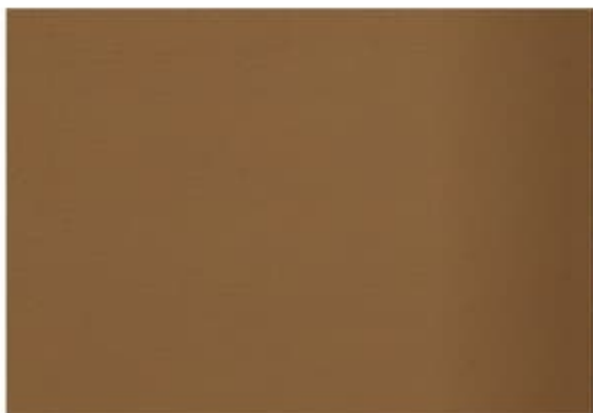
MANHATTAN BRONZE II



VAPOR MIST

MANHATTAN BRONZE III

SOFA FABRIC



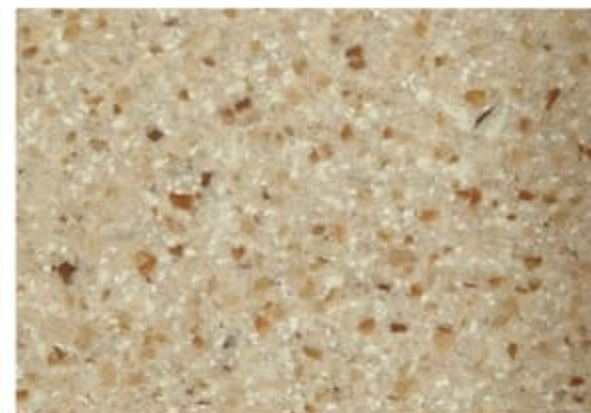
DINETTE ACCENT



BEDSPREAD



COUNTERTOP



CARPET



FLOORING



BED ACCENT



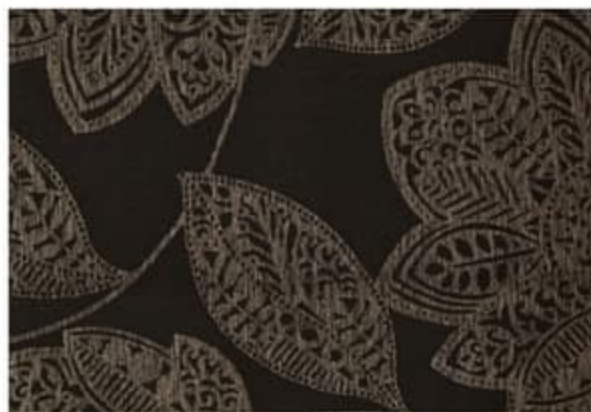
BACKSPLASH

VAPOR MIST II

SOFA FABRIC



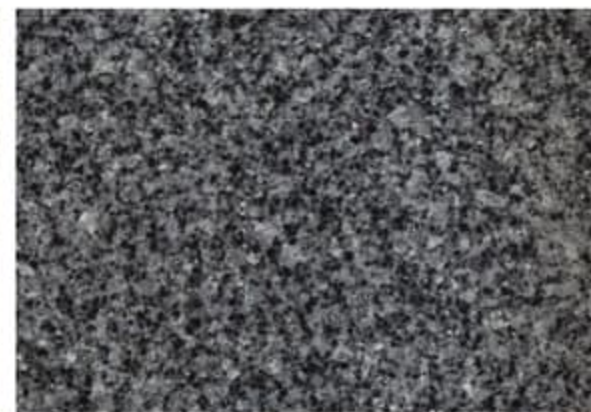
DINETTE ACCENT



BEDSPREAD



COUNTERTOP



CARPET



FLOORING



BED ACCENT



BACKSPLASH

MANHATTAN BRONZE III

SOFA FABRIC



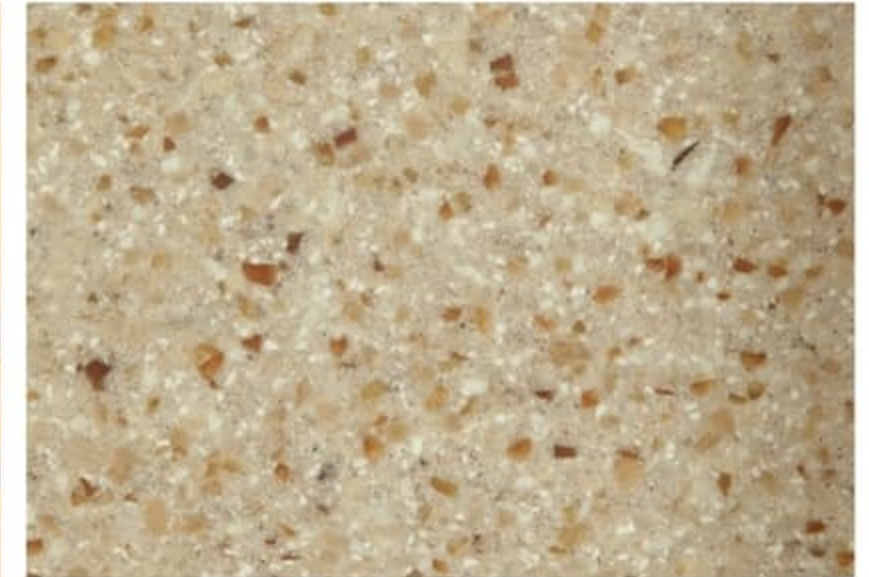
DINETTE ACCENT



BEDSPREAD



COUNTERTOP



CARPET



FLOORING



BED ACCENT



BACKSPLASH

VAPOR MIST II

SOFA FABRIC



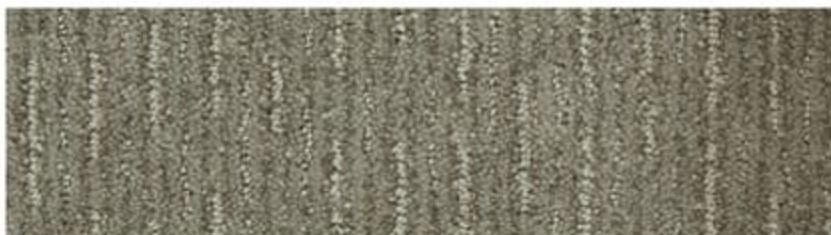
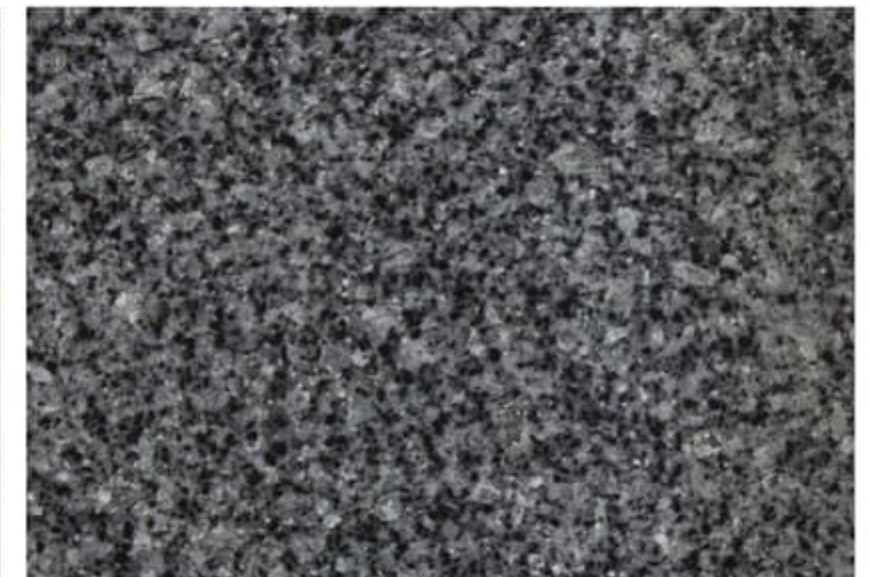
DINETTE ACCENT



BEDSPREAD



COUNTERTOP



CARPET



FLOORING

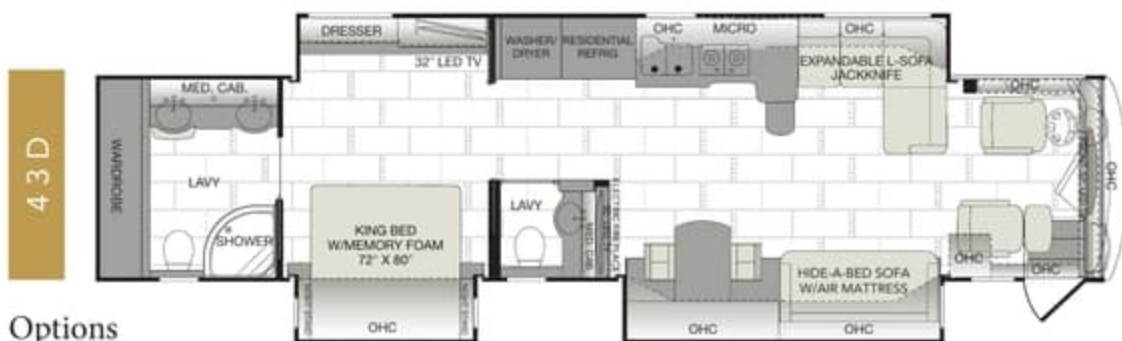


BED ACCENT



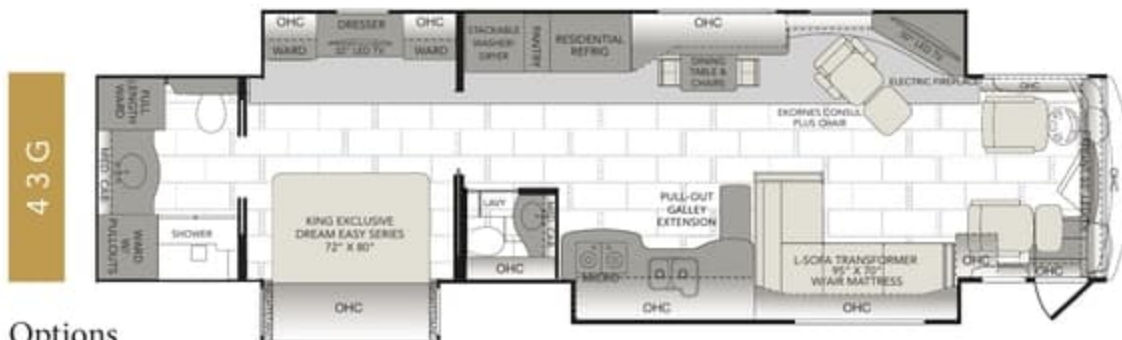
BACKSPLASH

FLOORPLANS



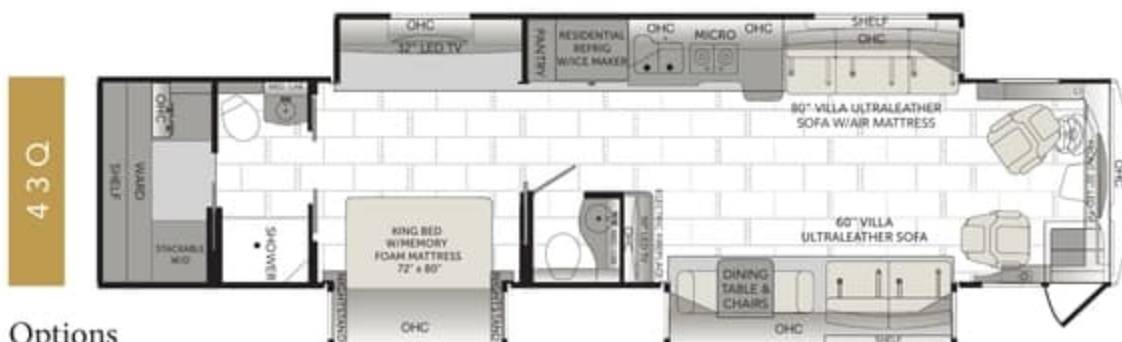
Options

107, 198, 830, 856



Options

107, 641, 830



Options

107, 191, 641, 830, 856, 881



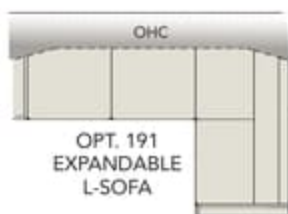
Options

107, 198, 641, 830, 856

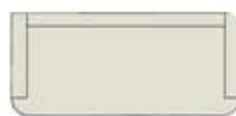
OPTIONS



OPT. 107
DISHWASHER



OPT. 191
EXPANDABLE
L-SOFA



OPT. 198
SOFA
JACKKNIFE



OPT. 641
EMERGENCY
EXIT DOOR



OPT. 830
FACING DINETTE



OPT. 856
KING BED
W/AIR
72" X 80"



OPT. 881
DESK W/RECLINER

OHC

WEIGHTS

CHASSIS — ROADMASTER™

MODEL	43D	43G	43Q	43S
GVWR (lbs) ¹	44,600	44,600	44,600	44,600
Front GAWR (lbs) ²	14,600	14,600	14,600	14,600
Rear GAWR (lbs) ²	20,000	20,000	20,000	20,000
Tag Axle GAWR (lbs) ²	10,000	10,000	10,000	10,000
GCWR (lbs) ²	59,600	59,600	59,600	59,600
Hitch Rating Weight (lbs) ¹¹	15,000	15,000	15,000	15,000
Tongue Weight (lbs) ¹	1,500	1,500	1,500	1,500
Fuel Capacity (gal)	150	150	150	150

DIMENSIONS & CAPACITIES

MODEL	43D	43G	43Q	43S
Wheelbase (inches)	302"	302"	302"	302"
Overall Length ⁴	43' 10"	43' 5"	43' 5"	43' 10"
Overall Height (with A/C) ^{5,6}	12' 11"	12' 11"	12' 11"	12' 11"
Overall Width (maximum) ^{5,6}	102"	102"	102"	102"
Interior Height (maximum)	84"	84"	84"	84"
Interior Width (maximum)	96"	96"	96"	96"
Fresh Water Holding Tank (gal)	100	100	100	100
Grey Water Holding Tank (gal)	60	60	60	60
Black Water Holding Tank (gal)	40	40	40	40

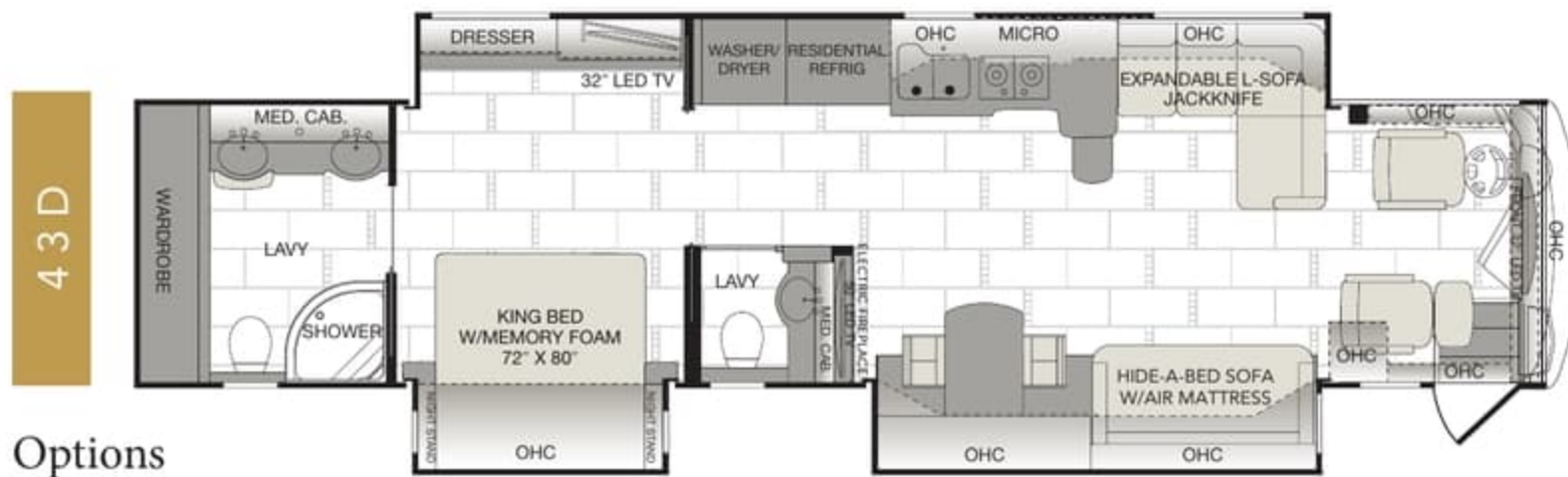
CHASSIS

CHASSIS — ROADMASTER™ B450

SPECIFICATIONS

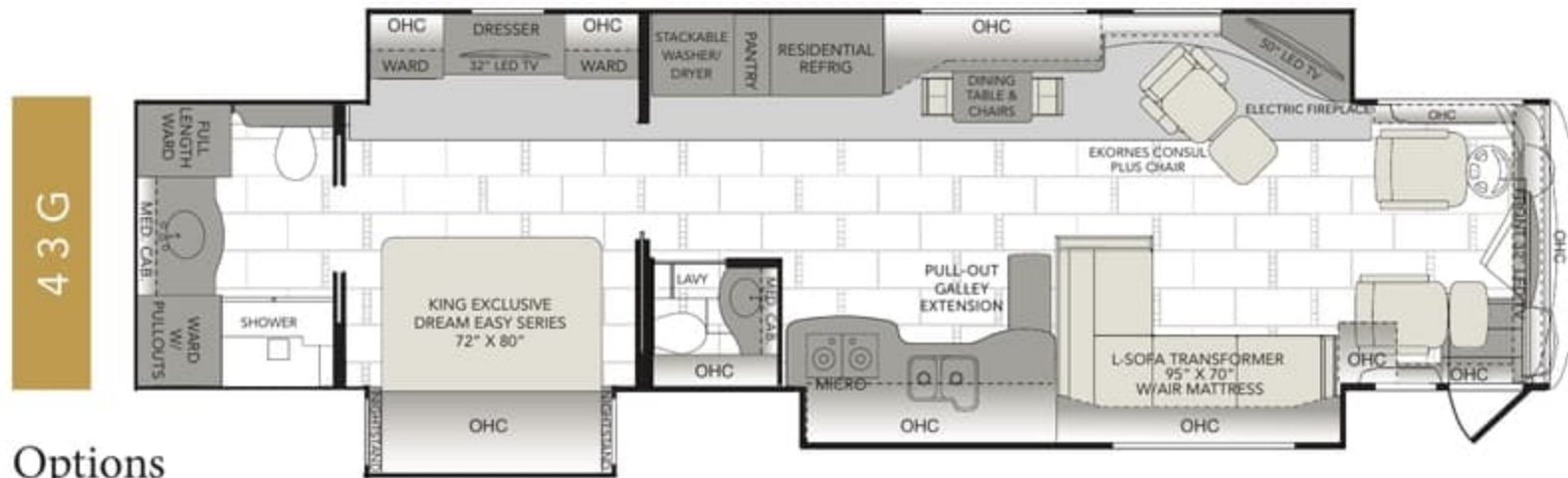
Model	Freightliner® XCM Series
Engine	Cummins® ISL9 w/2-Stage Engine Brake
Torque	1,250 lb-ft @ 1,400 RPM
Horsepower	450 HP
Transmission	Allison® 3000 MH 6-Speed w/Electronic Shift
Alternator	160 Amp Leece-Neville
Front Tires	295/80R 22.5" Michelin® Radial
Rear Tires	295/80R 22.5" Michelin® Radial

FLOOR PLANS



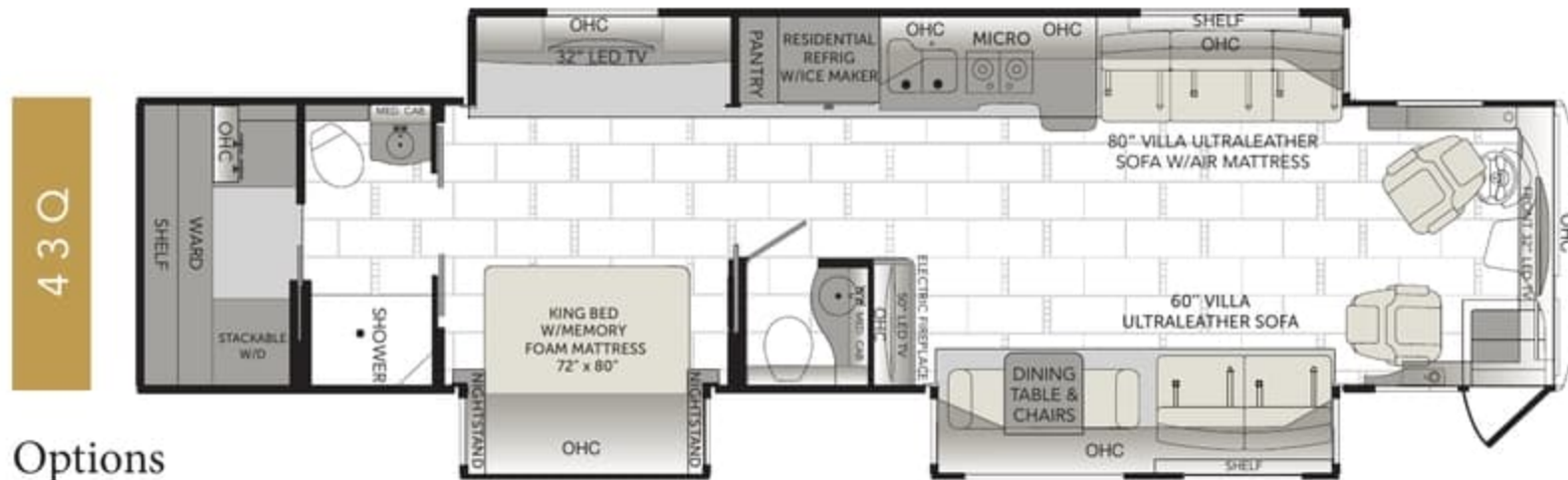
Options

107, 198, 830, 856



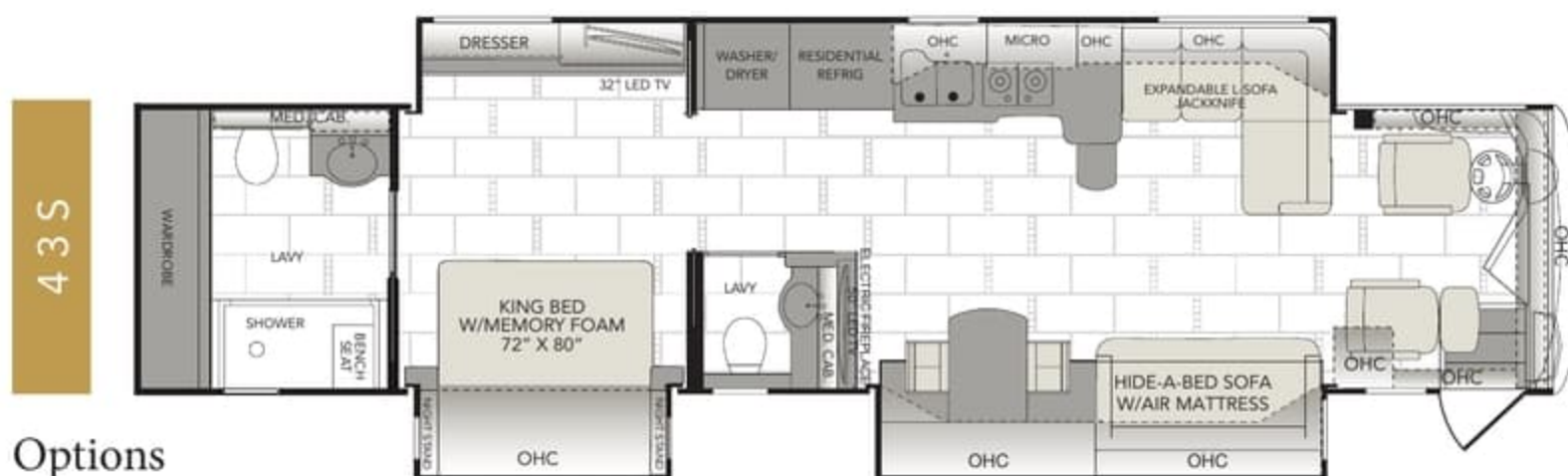
Options

107, 641, 830



Options

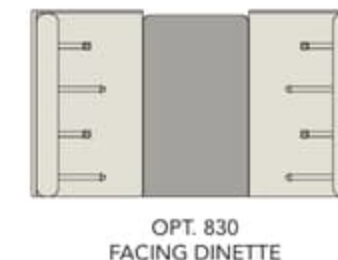
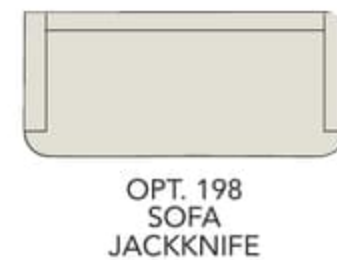
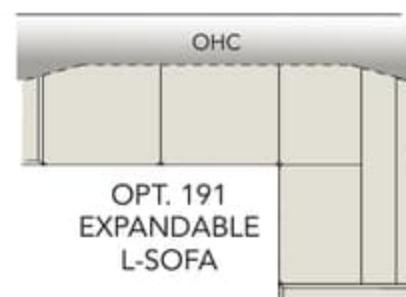
107, 191, 641, 830, 856, 881



Options

107, 198, 641, 830, 856

OPTIONS



WEIGHTS

CHASSIS — ROADMASTER™

MODEL	43D	43G	43Q	43S
GVWR (lbs) ¹	44,600	44,600	44,600	44,600
Front GAWR (lbs) ²	14,600	14,600	14,600	14,600
Rear GAWR (lbs) ²	20,000	20,000	20,000	20,000
Tag Axle GAWR (lbs) ²	10,000	10,000	10,000	10,000
GCWR (lbs) ²	59,600	59,600	59,600	59,600
Hitch Rating Weight (lbs) ⁺⁺	15,000	15,000	15,000	15,000
Tongue Weight (lbs) [†]	1,500	1,500	1,500	1,500
Fuel Capacity (gal)	150	150	150	150

DIMENSIONS & CAPACITIES

MODEL	43D	43G	43Q	43S
Wheelbase (inches)	302"	302"	302"	302"
Overall Length ⁴	43' 10"	43' 5"	43' 5"	43' 10"
Overall Height (with A/C) ^{5, 6}	12' 11"	12' 11"	12' 11"	12' 11"
Overall Width (maximum) ^{5, 6}	102"	102"	102"	102"
Interior Height (maximum)	84"	84"	84"	84"
Interior Width (maximum)	96"	96"	96"	96"
Fresh Water Holding Tank (gal)	100	100	100	100
Grey Water Holding Tank (gal)	60	60	60	60
Black Water Holding Tank (gal)	40	40	40	40

CHASSIS

CHASSIS — ROADMASTER™ B450

SPECIFICATIONS

Model	Freightliner® XCM Series
Engine	Cummins® ISL9 w/2-Stage Engine Brake
Torque	1,250 lb-ft @ 1,400 RPM
Horsepower	450 HP
Transmission	Allison® 3000 MH 6-Speed w/Electronic Shift
Alternator	160 Amp Leece-Neville
Front Tires	295/80R 22.5" Michelin® Radial
Rear Tires	295/80R 22.5" Michelin® Radial

STANDARDS AND OPTIONS

INTERIOR

INTERIOR GENERAL AMENITIES

- 12V LED CEILING & TASK LIGHTING
- 84" INTERIOR CEILING HEIGHT
- ADJUSTABLE SHELVES THROUGHOUT
- CENTRAL VACUUM SYSTEM
- COMPLETE PEX PLUMBING SYSTEM
- COUNTERTOP DECORATIVE EDGE TREATMENT
- CROWN MOLDING W/DECORATIVE CORNER CAPS
- DELUXE ROLLER BEARING, FULL-EXTENSION DRAWER GUIDES & TRANSIT-SHIP LOCKS
- FULLY CONCEALED & ADJUSTABLE CABINET DOOR HINGES
- FAN-TASTIC® POWER ROOF VENT W/WALL SWITCH (MULTIPLE LOCATIONS)
- HARDWOOD CABINET DOORS/DRAWERS
- HARDWOOD WINDOW TREATMENTS
- HEATED TILE FLOOR
- INTEGRATED LATCH HARDWARE IN POCKET DOORS
- LED LIGHTING
- LINED CABINET INTERIOR
- MANUAL DOUBLE ROLLER SHADES
- POLISHED PORCELAIN TILE FLOOR W/ACCENT INLAIS
- (3) ROOF-MOUNTED, HIGH-EFFICIENCY 15,000 BTU/H A/C & BEDROOM HEAT PUMP
- SOFT TOUCH PADDED CEILING W/DECORATIVE TRIM
- SOLID WOOD FACE FRAME CABINETS

OPTIONS

- WINEGARD® STATIONARY DSS SYSTEM
- WINEGARD IN MOTION SATELLITE SYSTEM
- CSA PACKAGE (CANADIAN SPECS)**

DRIVER CONVENIENCE

- 110V POWER OUTLET AT DASH
- ADJUSTABLE 3-POINT SEATBELTS AT DRIVER & FRONT PASSENGER SEATS (W/ADJUSTABLE SHOULDER STRAPS)
- ANTI-LOCK BRAKE SYSTEM (ABS)
- AUTOMOTIVE WRAP-AROUND DASH
- AIR HORNS
- AUXILIARY START CIRCUIT
- AUXILIARY FOG LAMPS
- BACKLIT SWITCHES & GAUGES
- BATTERY DISCONNECT SYSTEM
- COLOR REAR & SIDE-VISION CAMERAS
- COLOR BACK-UP MONITOR
- CRUISE CONTROL
- DENSO® HIGH-OUTPUT AUTO A/C HEATER COMBO
- DRIVER LEFT-CONSOLE W/LOWER STORAGE BIN
- DRIVER & PASSENGER LED READING LIGHTS
- DUAL-DASH MONITOR DESIGN
- MULTIPLE AUXILIARY 12-VOLT DASH RECEPTACLES
- MANUAL DRIVER/PASSENGER ROLLER SHADES/BLINDS
- POWER ENTRY STEP COVER
- POWERED WINDSHIELD PRIVACY BLIND & SHADE
- PASSENGER ARMREST
- PASSENGER SEAT POWER FOOTREST & ADJUSTABLE ARM
- RADIO SWITCH MAIN/AUXILIARY POWER
- REMOTE/HEATED CHROME REAR-VIEW MIRRORS W/TURN SIGNALS & SIDEVIEW CAMERAS
- SATELLITE RADIO (SUBSCRIPTION REQUIRED)
- SOLID-SURFACE ENTRY-STEP W/LED ACCENT LIGHTS
- SMART WHEEL W/ TILT/TELESCOPING STEERING WHEEL
- USB CHARGER (DRIVER SIDE)
- VILLA® DRIVER/FRONT PASSENGER ULTRALEATHER™ CAPTAIN'S CHAIRS W/RECLINING BACK/SLIDE CONTROLS/POWER/HEATED/ADJUSTABLE ARMS
- ADJUSTABLE ACCELERATOR & BRAKE PEDALS
- WINDSHIELD WIPERS W/WET ARM
- XITE® TOUCH SCREEN DASH RADIO W/GPS
- NAVIGATION & SIRIUS®

LIVING AREA

- 50" LED HDTV MID-SHIP
- BLU-RAY DVD PLAYER
- ELECTRIC FIREPLACE
- FRONT 32" LED HDTV IN FRONT OVERHEAD
- TV ANTENNA
- SOUND BAR

FURNITURE

- EXPANDABLE L-SOFA JACKKNIFE (43D/43S)
- SOFA W/HIDE-A-BED
- HIDE-A-BED SOFA W/AIR MATTRESS (43D/43S)
- VILLA® RESIDENTIAL SEAT STYLING

OPTIONS

- SOFA JACKKNIFE (43D, 43S)
- EXPANDABLE L-SOFA (43Q)
- FACING DINETTE
- DESK W/RECLINER (43Q)

GALLEY

- ADJUSTABLE CABINET SHELVES (SELECT CABINETS)
- DECORATIVE BACKSPLASH
- FLUSH-MOUNT ELECTRIC 2-BURNER INDUCTION COOKTOP
- RESIDENTIAL REFRIGERATOR W/ICEMAKER IN DOOR
- HIGH-RISE SINGLE-LEVEL GALLEY FAUCET W/SPRAYER
- LARGE, DOUBLE SOLID-SURFACE SINK
- POLISHED SOLID-SURFACE COUNTERTOPS & SINK COVERS
- PULL-OUT COUNTER EXTENSION
- UNDER-GALLEY SHELVING & WASTEBASKET
- 30"/1.9 CU.FT. STAINLESS STEEL CONVECTION MICROWAVE OVEN W/BUILT-IN RANGE HOOD & LIGHTS

OPTIONS

- DISHWASHER

BEDROOM

- BEDROOM ENTERTAINMENT CENTER W/32" LED HDTV
- BEDSPREAD W/DECOR PILLOWS
- KING EXCLUSIVE DREAM EASY SERIES 72" x 80" (43G)
- KING BED W/MEMORY FOAM 72" x 80" (43D, 43Q, 43S)
- LIFT-UP BED W/UNDER-BED STORAGE (43D, 43Q, 43S)
- HARDWOOD 6-PANEL DOORS
- MANUAL ROLLER SHADE & PRIVACY BLIND
- MIRRORING WARDROBE DOORS
- OVERHEAD CABINETRY ABOVE BED
- POLISHED SOLID-SURFACE COUNTER & NIGHTSTAND TOPS
- REAR WARDROBE W/CEDAR LINING, CARPETED FLOOR & WIRE ORGANIZER
- REMOTE GENERATOR START SWITCH

OPTIONS

- KING AIR MATTRESS 72" x 80" (N/A 43G)

BATHROOM

- A/C VENTING
- CABINET TOE KICKS
- DECORATIVE CUSTOM TILE BACKSPLASH
- GLASS SHOWER DOOR
- HARDWOOD BATH DOOR/TRIMS
- LED LIGHT OVER SINK
- SENTREL SHOWER ENCLOSURE W/SKYLIGHT (43D, 43G, 43Q)
- PORCELAIN VACUUM FLUSH TOILET
- SPA SHOWER (43S)
- VANITY W/DUAL SOLID-SURFACE SINKS & MAKE-UP BENCH (43D)

PLUMBING/ELECTRICAL

- 120V/12V AC/DC CONVERTER
- 2,800-WATT PURE SINE WAVE INVERTER W/REMOTE 50-AMP SERVICE

- DIESEL AQUA-HOT® HEATING SYSTEM 50,000 BTU/H (HOUSE & WATER)
- AUTO GENERATOR START
- DEMAND WATER PUMP W/FILTER
- GRAVITY & PRESSURIZED FRESH WATER FILL
- HEAT PUMP ON REAR AC UNIT
- HOLDING TANK SAN-T-FLUSH™ SYSTEM
- HEATED WATER & HOLDING TANK COMPARTMENTS
- INVERTER & BATTERY MONITOR
- QUIET COOL DUCTED A/C
- WATER PUMP SWITCH (MULTIPLE LOCATIONS)
- WASTE MANAGEMENT PUMP W/POWER WATER HOSE REEL
- WHOLE COACH WATER FILTRATION SYSTEM

SAFETY/CONVENIENCE

- 3-POINT SEAT BELTS AT DRIVER & PASSENGER SEATS
- CARBON MONOXIDE DETECTOR/ALARM
- CENTRAL ELECTRICAL PANEL
- FIRE EXTINGUISHER
- ENERGY MANAGEMENT SYSTEM (EMS) W/SMART START
- MULTIPLE SEATBELT LOCATIONS
- NEUTRAL LOSS PROTECTION
- SMOKE DETECTOR/ALARM

EXTERIOR

EXTERIOR GENERAL AMENITIES

- 1ST FULL BAY 36"/54" S/O TRAY
- 2ND FULL BAY 90" S/O TRAY
- 10.0KW ONAN® QUIET DIESEL GENERATOR W/POWER SLIDE
- 20' SEWER HOSE
- ALUMINUM WHEELS
- AUTOMOTIVE SAFETY GLASS
- CONTINUOUS ONE-PIECE COMPARTMENT BULB SEAL
- DAYTIME RUNNING LIGHTS
- ELECTRICAL OUTLETS IN LUGGAGE COMPARTMENTS
- SONY 42" LED TV
- FOUR 6V/DEEP-CYCLE HOUSE BATTERIES
- FIBERGLASS FRONT QUARTER PANELS
- FIBERGLASS FRONT/REAR CAPS W/HIGH MOUNTED TAILLIGHTS
- FIBERGLASS WHEEL WELL TRIMS
- FRONT & MID-COACH DOCKING LIGHTS
- FULL-WIDTH REAR ROCK GUARD W/STAINLESS LOGO PANEL
- HEAVY-DUTY E-COATED STEEL ROADMASTER™ BRIDGE
- HIGH-MOUNTED THIRD BRAKE LIGHT
- INSULATED ALUMINUM LUGGAGE DOORS W/SINGLE PADDLE METAL LATCHES & POWDERCOAT STEEL HINGES
- KEYLESS ENTRY REMOTE
- LED CLEARANCE LIGHTS
- LIGHTED LUGGAGE COMPARTMENTS
- MOLDED FIBERGLASS ROOF
- MUD FLAPS
- PARK CABLE RECEPTACLE
- PASS-THROUGH STORAGE
- PORCH LIGHT
- POWER ENTRY STEP
- POWERCORD REEL
- PROTECTIVE FRONT MASK
- UNDERHOOD UTILITY LIGHT
- SIDE DOCKING LAMPS
- SIDE TURN SIGNAL INDICATORS
- SIDE SWINGING LUGGAGE DOORS
- ROOF MOUNTED SOLAR ELECTRIC PANEL (95 WATT)
- TIRE VALVE EXTENDERS

- TOILET TANK SAN-T-FLUSH™ SYSTEM
- TOUCH SENSOR TANK MONITORING SYSTEM
- UTILITY COMPARTMENT W/EXTERIOR SHOWER

OPTIONS

- TWO-PIECE ALUMINUM REAR LADDER
 - UNDERCHASSIS LIGHTING
 - EMERGENCY EXIT DOOR (N/A 43D)
- ### AWNINGS/DOORS/WINDOWS
- WINDOW AWNING PACKAGE
 - AWNING RAIL/DROP MOLDING (BOTH SIDES)
 - CHROME LUGGAGE DOOR HANDLES
 - DOORSIDE PATIO RECEPTACLE
 - EASY SWEEP FLOORING AT ENTRY STEP
 - EMERGENCY EGRESS WINDOW
 - ENTRY DOOR W/SCREEN DOOR & DEADBOLT LOCK
 - FRAMELESS FLUSH MOUNT WINDOWS
 - LIGHTED ENTRY ASSIST HANDLE
 - POWER AWNING W/LED LIGHT STRIP & WIND SENSOR

EXTERIOR BODY CONSTRUCTION

- 5-LAYER FLOOR W/ 3" FOAM INSULATION
 - 6-LAYER RADIUS ROOF W/UP TO 5" FOAM INSULATION
 - ACOUSTIC ABSORPTION MATERIAL IN FRONT, REAR & ENGINE COMPARTMENT
 - ALUMINUM-FRAMED WALL, ROOF & FLOOR CONSTRUCTION
 - FULL FIBERGLASS FRONT & REAR CAPS
 - GEL COAT FIBERGLASS SIDEWALLS W/NO WOOD SUBSTRATE
 - INSULATED STRUT-ASSISTED SIDE-HINGED LUGGAGE DOORS
 - LARGE ONE-PIECE BONDED-IN WINDSHIELD
 - MOLDED FIBERGLASS RADIUS ROOF W/DUCTED A/C
 - PREMIUM SAND & BUFF 4-COLOR FULL BODY PAINT
 - REINFORCED INTERLOCKING ALUMINUM CONNECTIONS AT ROOF, SIDEWALL & FLOOR
 - ROADMASTER CHASSIS
 - SEAMLESS CAP TO SIDEWALL TRANSITIONS
 - VACU-BOND® SIDEWALL, ROOF, FLOOR & REAR WALL
- ### ROADMASTER™ CHASSIS
- AUTOMATIC 4-POINT DUAL (HYDRAULIC) LEVELING SYSTEM
 - CUSTOM TUNED SACHS® SHOCKS (6)
 - DUAL HIGH-FLOW FUEL FILL W/LOCKING DOORS
 - EASY-ACCESS REMOTE FILTER LOCATION
 - ENGINE BLOCK HEATER (1000 WATT)
 - FRONT AIR DISC BRAKES & REAR DRUM BRAKES
 - HEAVY-DUTY E-COATED STEEL ROADMASTER BRIDGE
 - POLISHED ALUMINUM WHEELS (6) 22.5 x 8.25
 - PROTECTIVE SPRAY-ON UNDERCOATING
 - REMOTE AIR SYSTEM CONNECTION W/HOSE & FITTINGS
 - TAG AXLE W/AIR DUMP CONTROL
 - TWO 1900 CCA MAINTENANCE-FREE CHASSIS BATTERIES
 - ZF® INDEPENDENT FRONT SUSPENSION W/60-DEGREE STEERING ANGLE
 - ULTRASTEER® TAG-AXLE SUSPENSION W/PASSIVE STEERING
 - V-RIDE® T20 20,000* REAR AIR SUSPENSION

STANDARDS AND OPTIONS

INTERIOR

INTERIOR GENERAL AMENITIES

- 12V LED CEILING & TASK LIGHTING
- 84" INTERIOR CEILING HEIGHT
- ADJUSTABLE SHELVES THROUGHOUT
- CENTRAL VACUUM SYSTEM
- COMPLETE PEX PLUMBING SYSTEM
- COUNTERTOP DECORATIVE EDGE TREATMENT
- CROWN MOLDING W/DECORATIVE CORNER CAPS
- DELUXE ROLLER BEARING, FULL-EXTENSION DRAWER GUIDES & TRANSIT-SHIP LOCKS
- FULLY CONCEALED & ADJUSTABLE CABINET DOOR HINGES
- FAN-TASTIC® POWER ROOF VENT W/WALL SWITCH (MULTIPLE LOCATIONS)
- HARDWOOD CABINET DOORS/DRAWERS
- HARDWOOD WINDOW TREATMENTS
- HEATED TILE FLOOR
- INTEGRATED LATCH HARDWARE IN POCKET DOORS
- LED LIGHTING
- LINED CABINET INTERIOR
- MANUAL DOUBLE ROLLER SHADES
- POLISHED PORCELAIN TILE FLOOR W/ACCENT INLAYS
- (3) ROOF-MOUNTED, HIGH-EFFICIENCY 15,000 BTU/H A/C & BEDROOM HEAT PUMP
- SOFT TOUCH PADDED CEILING W/DECORATIVE TRIM
- SOLID WOOD FACE FRAME CABINETS

OPTIONS

- WINEGARD® STATIONARY DSS SYSTEM
- WINEGARD IN MOTION SATELLITE SYSTEM
- CSA PACKAGE (CANADIAN SPECS)**

DRIVER CONVENIENCE

- 110V POWER OUTLET AT DASH
- ADJUSTABLE 3-POINT SEATBELTS AT DRIVER & FRONT PASSENGER SEATS (W/ADJUSTABLE SHOULDER STRAPS)
- ANTI-LOCK BRAKE SYSTEM (ABS)
- AUTOMOTIVE WRAP-AROUND DASH
- AIR HORNS
- AUXILIARY START CIRCUIT
- AUXILIARY FOG LAMPS
- BACKLIT SWITCHES & GAUGES
- BATTERY DISCONNECT SYSTEM
- COLOR REAR & SIDE-VISION CAMERAS
- COLOR BACK-UP MONITOR
- CRUISE CONTROL
- DENSO® HIGH-OUTPUT AUTO A/C HEATER COMBO
- DRIVER LEFT-CONSOLE W/LOWER STORAGE BIN
- DRIVER & PASSENGER LED READING LIGHTS
- DUAL-DASH MONITOR DESIGN
- MULTIPLE AUXILIARY 12-VOLT DASH RECEPTACLES
- MANUAL DRIVER/PASSENGER ROLLER SHADES/BLINDS
- POWER ENTRY STEP COVER
- POWERED WINDSHIELD PRIVACY BLIND & SHADE
- PASSENGER ARMREST
- PASSENGER SEAT POWER FOOTREST & ADJUSTABLE ARM
- RADIO SWITCH MAIN/AUXILIARY POWER
- REMOTE/HEATED CHROME REAR-VIEW MIRRORS W/TURN SIGNALS & SIDEVIEW CAMERAS
- SATELLITE RADIO (SUBSCRIPTION REQUIRED)
- SOLID-SURFACE ENTRY-STEP W/LED ACCENT LIGHTS
- SMART WHEEL W/ TILT/TELESCOPING STEERING WHEEL
- USB CHARGER (DRIVER SIDE)
- VILLA® DRIVER/FRONT PASSENGER ULTRALEATHER™ CAPTAIN'S CHAIRS W/RECLINING BACK/SLIDE CONTROLS/POWER/HEATED/ADJUSTABLE ARMS
- ADJUSTABLE ACCELERATOR & BRAKE PEDALS
- WINDSHIELD WIPERS W/WET ARM
- XITE® TOUCH SCREEN DASH RADIO W/GPS
- NAVIGATION & SIRIUS®

LIVING AREA

- 50" LED HDTV MID-SHIP
- BLU-RAY DVD PLAYER
- ELECTRIC FIREPLACE
- FRONT 32" LED HDTV IN FRONT OVERHEAD
- TV ANTENNA
- SOUND BAR

FURNITURE

- EXPANDABLE L-SOFA JACKKNIFE (43D/43S)
- SOFA W/HIDE-A-BED
- HIDE-A-BED SOFA W/AIR MATTRESS (43D/43S)
- VILLA® RESIDENTIAL SEAT STYLING

OPTIONS

- SOFA JACKKNIFE (43D, 43S)
- EXPANDABLE L-SOFA (43Q)
- FACING DINETTE
- DESK W/RECLINER (43Q)

GALLEY

- ADJUSTABLE CABINET SHELVES (SELECT CABINETS)
- DECORATIVE BACKSPLASH
- FLUSH-MOUNT ELECTRIC 2-BURNER INDUCTION COOKTOP
- RESIDENTIAL REFRIGERATOR W/ICEMAKER IN DOOR
- HIGH-RISE SINGLE-LEVEL GALLEY FAUCET W/SPRAYER
- LARGE, DOUBLE SOLID-SURFACE SINK
- POLISHED SOLID-SURFACE COUNTERTOPS & SINK COVERS
- PULL-OUT COUNTER EXTENSION
- UNDER-GALLEY SHELVING & WASTEBASKET
- 30"/1.9 CU.FT. STAINLESS STEEL CONVECTION MICROWAVE OVEN W/BUILT-IN RANGE HOOD & LIGHTS

OPTIONS

- DISHWASHER

BEDROOM

- BEDROOM ENTERTAINMENT CENTER W/32" LED HDTV
- BEDSPREAD W/DECOR PILLOWS
- KING EXCLUSIVE DREAM EASY SERIES 72" x 80" (43G)
- KING BED W/MEMORY FOAM 72" x 80" (43D, 43Q, 43S)
- LIFT-UP BED W/UNDER-BED STORAGE (43D, 43Q, 43S)
- HARDWOOD 6-PANEL DOORS
- MANUAL ROLLER SHADE & PRIVACY BLIND
- MIRRORING WARDROBE DOORS
- OVERHEAD CABINETRY ABOVE BED
- POLISHED SOLID-SURFACE COUNTER & NIGHTSTAND TOPS
- REAR WARDROBE W/CEDAR LINING, CARPETED FLOOR & WIRE ORGANIZER
- REMOTE GENERATOR START SWITCH

OPTIONS

- KING AIR MATTRESS 72" x 80" (N/A 43G)

BATHROOM

- A/C VENTING
- CABINET TOE KICKS
- DECORATIVE CUSTOM TILE BACKSPLASH
- GLASS SHOWER DOOR
- HARDWOOD BATH DOOR/TRIMS
- LED LIGHT OVER SINK
- SENTREL SHOWER ENCLOSURE W/SKYLIGHT (43D, 43G, 43Q)
- PORCELAIN VACUUM FLUSH TOILET
- SPA SHOWER (43S)
- VANITY W/DUAL SOLID-SURFACE SINKS & MAKE-UP BENCH (43D)

PLUMBING/ELECTRICAL

- 120V/12V AC/DC CONVERTER
- 2,800-WATT PURE SINE WAVE INVERTER W/REMOTE 50-AMP SERVICE

- DIESEL AQUA-HOT® HEATING SYSTEM 50,000 BTU/H (HOUSE & WATER)
- AUTO GENERATOR START
- DEMAND WATER PUMP W/FILTER
- GRAVITY & PRESSURIZED FRESH WATER FILL
- HEAT PUMP ON REAR AC UNIT
- HOLDING TANK SAN-T-FLUSH™ SYSTEM
- HEATED WATER & HOLDING TANK COMPARTMENTS
- INVERTER & BATTERY MONITOR
- QUIET COOL DUCTED A/C
- WATER PUMP SWITCH (MULTIPLE LOCATIONS)
- WASTE MANAGEMENT PUMP W/POWER WATER HOSE REEL
- WHOLE COACH WATER FILTRATION SYSTEM

SAFETY/CONVENIENCE

- 3-POINT SEAT BELTS AT DRIVER & PASSENGER SEATS
- CARBON MONOXIDE DETECTOR/ALARM
- CENTRAL ELECTRICAL PANEL
- FIRE EXTINGUISHER
- ENERGY MANAGEMENT SYSTEM (EMS) W/SMART START
- MULTIPLE SEATBELT LOCATIONS
- NEUTRAL LOSS PROTECTION
- SMOKE DETECTOR/ALARM

EXTERIOR

EXTERIOR GENERAL AMENITIES

- 1ST FULL BAY 36"/54" S/O TRAY
- 2ND FULL BAY 90" S/O TRAY
- 10.0KW ONAN® QUIET DIESEL GENERATOR W/POWER SLIDE
- 20' SEWER HOSE
- ALUMINUM WHEELS
- AUTOMOTIVE SAFETY GLASS
- CONTINUOUS ONE-PIECE COMPARTMENT BULB SEAL
- DAYTIME RUNNING LIGHTS
- ELECTRICAL OUTLETS IN LUGGAGE COMPARTMENTS
- SONY 42" LED TV
- FOUR 6V/DEEP-CYCLE HOUSE BATTERIES
- FIBERGLASS FRONT QUARTER PANELS
- FIBERGLASS FRONT/REAR CAPS W/HIGH MOUNTED TAILLIGHTS
- FIBERGLASS WHEEL WELL TRIMS
- FRONT & MID-COACH DOCKING LIGHTS
- FULL-WIDTH REAR ROCK GUARD W/STAINLESS LOGO PANEL
- HEAVY-DUTY E-COATED STEEL ROADMASTER™ BRIDGE
- HIGH-MOUNTED THIRD BRAKE LIGHT
- INSULATED ALUMINUM LUGGAGE DOORS W/SINGLE PADDLE METAL LATCHES & POWDERCOAT STEEL HINGES
- KEYLESS ENTRY REMOTE
- LED CLEARANCE LIGHTS
- LIGHTED LUGGAGE COMPARTMENTS
- MOLDED FIBERGLASS ROOF
- MUD FLAPS
- PARK CABLE RECEPTACLE
- PASS-THROUGH STORAGE
- PORCH LIGHT
- POWER ENTRY STEP
- POWERCORD REEL
- PROTECTIVE FRONT MASK
- UNDERHOOD UTILITY LIGHT
- SIDE DOCKING LAMPS
- SIDE TURN SIGNAL INDICATORS
- SIDE SWINGING LUGGAGE DOORS
- ROOF MOUNTED SOLAR ELECTRIC PANEL (95 WATT)
- TIRE VALVE EXTENDERS

- TOILET TANK SAN-T-FLUSH™ SYSTEM
- TOUCH SENSOR TANK MONITORING SYSTEM
- UTILITY COMPARTMENT W/EXTERIOR SHOWER

OPTIONS

- TWO-PIECE ALUMINUM REAR LADDER
- UNDERCHASSIS LIGHTING
- EMERGENCY EXIT DOOR (N/A 43D)

AWNINGS/DOORS/WINDOWS

- WINDOW AWNING PACKAGE
- AWNING RAIL/DRIP MOLDING (BOTH SIDES)
- CHROME LUGGAGE DOOR HANDLES
- DOORSIDE PATIO RECEPTACLE
- EASY SWEEP FLOORING AT ENTRY STEP
- EMERGENCY EGRESS WINDOW
- ENTRY DOOR W/SCREEN DOOR & DEADBOLT LOCK
- FRAMELESS FLUSH MOUNT WINDOWS
- LIGHTED ENTRY ASSIST HANDLE
- POWER AWNING W/LED LIGHT STRIP & WIND SENSOR

EXTERIOR BODY CONSTRUCTION

- 5-LAYER FLOOR W/ 3" FOAM INSULATION
- 6-LAYER RADIUS ROOF W/UP TO 5" FOAM INSULATION
- ACOUSTIC ABSORPTION MATERIAL IN FRONT, REAR & ENGINE COMPARTMENT
- ALUMINUM-FRAMED WALL, ROOF & FLOOR CONSTRUCTION
- FULL FIBERGLASS FRONT & REAR CAPS
- GEL COAT FIBERGLASS SIDEWALLS W/NO WOOD SUBSTRATE
- INSULATED STRUT-ASSISTED SIDE-HINGED LUGGAGE DOORS
- LARGE ONE-PIECE BONDED-IN WINDSHIELD
- MOLDED FIBERGLASS RADIUS ROOF W/DUCTED A/C
- PREMIUM SAND & BUFF 4-COLOR FULL BODY PAINT
- REINFORCED INTERLOCKING ALUMINUM CONNECTIONS AT ROOF, SIDEWALL & FLOOR
- ROADMASTER CHASSIS
- SEAMLESS CAP TO SIDEWALL TRANSITIONS
- VACU-BOND® SIDEWALL, ROOF, FLOOR & REAR WALL

ROADMASTER™ CHASSIS

- AUTOMATIC 4-POINT DUAL (HYDRAULIC) LEVELING SYSTEM
- CUSTOM TUNED SACHS® SHOCKS (6)
- DUAL HIGH-FLOW FUEL FILL W/LOCKING DOORS
- EASY-ACCESS REMOTE FILTER LOCATION
- ENGINE BLOCK HEATER (1000 WATT)
- FRONT AIR DISC BRAKES & REAR DRUM BRAKES
- HEAVY-DUTY E-COATED STEEL ROADMASTER BRIDGE
- POLISHED ALUMINUM WHEELS (6) 22.5 x 8.25
- PROTECTIVE SPRAY-ON UNDERCOATING
- REMOTE AIR SYSTEM CONNECTION W/HOSE & FITTINGS
- TAG AXLE W/AIR DUMP CONTROL
- TWO 1900 CCA MAINTENANCE-FREE CHASSIS BATTERIES
- ZF® INDEPENDENT FRONT SUSPENSION W/60-DEGREE STEERING ANGLE
- ULTRASTEER® TAG-AXLE SUSPENSION W/PASSIVE STEERING
- V-RIDE® T20 20,000# REAR AIR SUSPENSION



MONACO®

DIPLOMAT

ELITE CUSTOMER CARE At Monaco Coach, the road is our bloodline, and because it's yours to rule, we've never once lost sight of customer care. Our devotion to you before, during and after the sale starts with our trusted dealer network and spans to REV Recreation Group's very own regional technical centers, allowing Monaco Coach to offer the best in customer care. Visit your local dealer or monacocoach.com to learn more.

YOUR LOCAL DEALER

DISCLAIMER

1. GVWR (Gross Vehicle Weight Rating) is the maximum permissible weight of this fully loaded motorhome. The GVWR is equal to or greater than the sum of the (UVW) unloaded vehicle weight plus the (OCCC) occupant cargo-carrying capacity*.
 2. GAWR (Gross Axle Weight Rating) is the maximum permissible loaded weight a specific axle is designed to carry.
 3. GCWR (Gross Combined Weight Rating) is the value specified by the motorhome manufacturer as the maximum allowable loaded weight of this motorhome with its towed vehicle. Towing and braking capacities may be different. Refer to Monaco and chassis manufacturer's manuals for complete information.
 4. Length measured from front bumper to rear bumper (excludes accessories).
 5. Excludes safety equipment and awnings.
 6. Motorhomes feature a body width over 96" which will restrict your access to certain roads. Before purchasing, you should research any state and/or province road laws which may affect your usage.
 7. Tank manufacturer's listed water capacity (WC). Actual propane capacity is 80% of water listing as required by the safety code.
- † The chassis manufacturer recommends the installation of a supplemental brake control system to activate the brakes on the vehicle or trailer you are towing. Hitch receiver ratings expressed are maximum for the hitch receiver installed and may require the purchase of additional equipment that is dependent on the weight of the towed load. Consult with hitch receiver manufacturer for further information.
- †† The Minimum Towable Load of this vehicle is the available weight capacity, up to GCWR, when the coach is fully loaded to maximum GVWR. However, if the coach is loaded to something less than maximum GVWR, that extra available weight capacity can be added to your Towable Load. For example, if your coach is loaded to 1000lbs less than maximum GVWR, your Towable Load increases accordingly. Do not exceed the hitch rating weight, GVWR or GCWR.
- * UVW and OCCC are found on the label containing the federal certification tag in each RV.
- ** All 2017 REV Recreation Group motorhomes include a limited one-year/15,000-mile coach warranty and three-year/45,000-mile structural warranty, whichever occurs first, and is fully transferable for the first 12 months.

IMPORTANT—PLEASE READ

Product information, photography and illustrations included in this publication were as accurate as possible at the time of printing. For further product information and changes, please visit our website at www.monacocoach.com or contact your local Monaco dealer. Prices, materials, design and specifications are subject to change without notice. All weights, fuel, liquid capacities and dimensions are approximate. Monaco has designed its recreational vehicles to provide a variety of uses for customers. Each vehicle features optimal seating, sleeping, storage and fluid capacities. The user is responsible for selecting the proper combination of loads (i.e., occupants, equipment, fluids, cargo, etc.) to ensure that the vehicle's capacities are not exceeded.

SERVICE AND SUPPORT:

24/7 service and support – Toll-free 877-211-8135

REV GROUP

Monaco RV is part of REV Recreation Group, a division of REV Group, Inc., a family of 26 industry-leading motor vehicle brands. At REV Group, we innovate, design and build products that connect and protect thousands of people every day—our trusted vehicles are engineered with the utmost rigor and precision to deliver the highest levels of performance, reliability, durability and safety.

www.monacocoach.com

©2016 REV Group, Inc. Printed in the USA. Inventory Control Number DIP17B1, 08/16. Model Year 2017, First Edition.



MONACO®

DIPLOMAT

ELITE CUSTOMER CARE At Monaco Coach, the road is our bloodline, and because it's yours to rule, we've never once lost sight of customer care. Our devotion to you before, during and after the sale starts with our trusted dealer network and spans to REV Recreation Group's very own regional technical centers, allowing Monaco Coach to offer the best in customer care. Visit your local dealer or monacocoach.com to learn more.

YOUR LOCAL DEALER

DISCLAIMER

1. GVWR (Gross Vehicle Weight Rating) is the maximum permissible weight of this fully loaded motorhome. The GVWR is equal to or greater than the sum of the (UVW) unloaded vehicle weight plus the (OCCC) occupant cargo-carrying capacity*.
 2. GAWR (Gross Axle Weight Rating) is the maximum permissible loaded weight a specific axle is designed to carry.
 3. GCWR (Gross Combined Weight Rating) is the value specified by the motorhome manufacturer as the maximum allowable loaded weight of this motorhome with its towed vehicle. Towing and braking capacities may be different. Refer to Monaco and chassis manufacturer's manuals for complete information.
 4. Length measured from front bumper to rear bumper (excludes accessories).
 5. Excludes safety equipment and awnings.
 6. Motorhomes feature a body width over 96" which will restrict your access to certain roads. Before purchasing, you should research any state and/or province road laws which may affect your usage.
 7. Tank manufacturer's listed water capacity (WC). Actual propane capacity is 80% of water listing as required by the safety code.
- † The chassis manufacturer recommends the installation of a supplemental brake control system to activate the brakes on the vehicle or trailer you are towing. Hitch receiver ratings expressed are maximum for the hitch receiver installed and may require the purchase of additional equipment that is dependent on the weight of the towed load. Consult with hitch receiver manufacturer for further information.
- †† The Minimum Towable Load of this vehicle is the available weight capacity, up to GCWR, when the coach is fully loaded to maximum GVWR. However, if the coach is loaded to something less than maximum GVWR, that extra available weight capacity can be added to your Towable Load. For example, if your coach is loaded to 1000lbs less than maximum GVWR, your Towable Load increases accordingly. Do not exceed the hitch rating weight, GVWR or GCWR.
- * UVW and OCCC are found on the label containing the federal certification tag in each RV.
- ** All 2017 REV Recreation Group motorhomes include a limited one-year/15,000-mile coach warranty and three-year/45,000-mile structural warranty, whichever occurs first, and is fully transferable for the first 12 months.

IMPORTANT—PLEASE READ

Product information, photography and illustrations included in this publication were as accurate as possible at the time of printing. For further product information and changes, please visit our website at www.monacocoach.com or contact your local Monaco dealer. Prices, materials, design and specifications are subject to change without notice. All weights, fuel, liquid capacities and dimensions are approximate. Monaco has designed its recreational vehicles to provide a variety of uses for customers. Each vehicle features optimal seating, sleeping, storage and fluid capacities. The user is responsible for selecting the proper combination of loads (i.e., occupants, equipment, fluids, cargo, etc.) to ensure that the vehicle's capacities are not exceeded.

SERVICE AND SUPPORT:

24/7 service and support – Toll-free 877-211-8135



Monaco RV is part of REV Recreation Group, a division of REV Group, Inc., a family of 26 industry-leading motor vehicle brands. At REV Group, we innovate, design and build products that connect and protect thousands of people every day—our trusted vehicles are engineered with the utmost rigor and precision to deliver the highest levels of performance, reliability, durability and safety.

www.monacocoach.com

©2016 REV Group, Inc. Printed in the USA. Inventory Control Number DIP17B1, 08/16. Model Year 2017, First Edition.