

# 2018 AMERICAN EAGLE

2018 AMERICAN EAGLE BY AMERICAN COACH





# 2018 AMERICAN EAGLE

2018 AMERICAN EAGLE BY AMERICAN COACH







AMERICAN EAGLE 45C SHOWN IN BALTIC GRAPHITE DECOR & CHESTNUT SATIN WOOD CABINERY





AMERICAN EAGLE 45C SHOWN IN BALTIC GRAPHITE DECOR & CHESTNUT SATIN WOOD CABINETY





# A MARK OF EXCELLENCE

---

Leaders are like eagles. They don't flock. You find them one at a time. So it's only fitting that American Coach chose to name its most iconic Class A motor coach after one of our country's greatest icons—the American Eagle. Riding on a custom Liberty Chassis®, the Cummins ISX15 delivers the best-in-class 600HP, while luxury is taken to new heights throughout the coach. Beautiful design, intuitive amenities and flawless engineering make this motorhome a rare American luxury.





# A MARK OF EXCELLENCE

---

Leaders are like eagles. They don't flock. You find them one at a time. So it's only fitting that American Coach chose to name its most iconic Class A motor coach after one of our country's greatest icons—the American Eagle. Riding on a custom Liberty Chassis®, the Cummins ISX15 delivers the best-in-class 600HP, while luxury is taken to new heights throughout the coach. Beautiful design, intuitive amenities and flawless engineering make this motorhome a rare American luxury.



---

## SOPHISTICATED ELEGANCE

The 2018 American Eagle is a symbol of luxury, delivering progressive design throughout impeccable interiors. In fact, it's the infinite details of this motor coach that count. From the automotive-designed dash with French-stitched seams to solid-surface countertops with pencil-edge treatment, the American Eagle makes a statement everywhere you look.

---





---

## SOPHISTICATED ELEGANCE

The 2018 American Eagle is a symbol of luxury, delivering progressive design throughout impeccable interiors. In fact, it's the infinite details of this motor coach that count. From the automotive-designed dash with French-stitched seams to solid-surface countertops with pencil-edge treatment, the American Eagle makes a statement everywhere you look.

---







The master suite elevates luxury even further, featuring American Coach's exclusive Serenity Max Series king mattress with adjustable his and her sections, complete with memory foam and integrated massage. The headboard itself is hand-crafted.

---







The master suite elevates luxury even further, featuring American Coach's exclusive Serenity Max Series king mattress with adjustable his and her sections, complete with memory foam and integrated massage. The headboard itself is hand-crafted.

---





# DÉCOR OPTIONS



1 BACKSPLASH 2 COUNTERTOP 3 TILE 4 BEDSPREAD 5 BED ACCENT 6 SOFA 7 LIVING ACCENT 8 CARPET



TOFFEE SATIN FINISH

TOFFEE HIGH-GLOSS FINISH

CHESTNUT SATIN FINISH

CHESTNUT HIGH-GLOSS FINISH



# DÉCOR OPTIONS



1 BACKSPLASH 2 COUNTERTOP 3 TILE 4 BEDSPREAD 5 BED ACCENT 6 SOFA 7 LIVING ACCENT 8 CARPET



TOFFEE SATIN FINISH

TOFFEE HIGH-GLOSS FINISH

CHESTNUT SATIN FINISH

CHESTNUT HIGH-GLOSS FINISH



# CUSTOM PAINT FOR THAT FINAL TOUCH

---

We take pride in every detail of our coaches, right down to the gleam of each paint package, which is why American Coach features its very own custom paint facility at its manufacturing location in Decatur, Indiana. Every coach makes its way through the 125,000-square-foot facility, visiting eight different downdraft paint booth stations to achieve American Coach's pristine look — an automotive full-body paint with sand and buff high-gloss finish.



AMBER RIDGE



BAYSHORE



DENWOOD



# CUSTOM PAINT FOR THAT FINAL TOUCH

---

We take pride in every detail of our coaches, right down to the gleam of each paint package, which is why American Coach features its very own custom paint facility at its manufacturing location in Decatur, Indiana. Every coach makes its way through the 125,000-square-foot facility, visiting eight different downdraft paint booth stations to achieve American Coach's pristine look — an automotive full-body paint with sand and buff high-gloss finish.



AMBER RIDGE



BAYSHORE

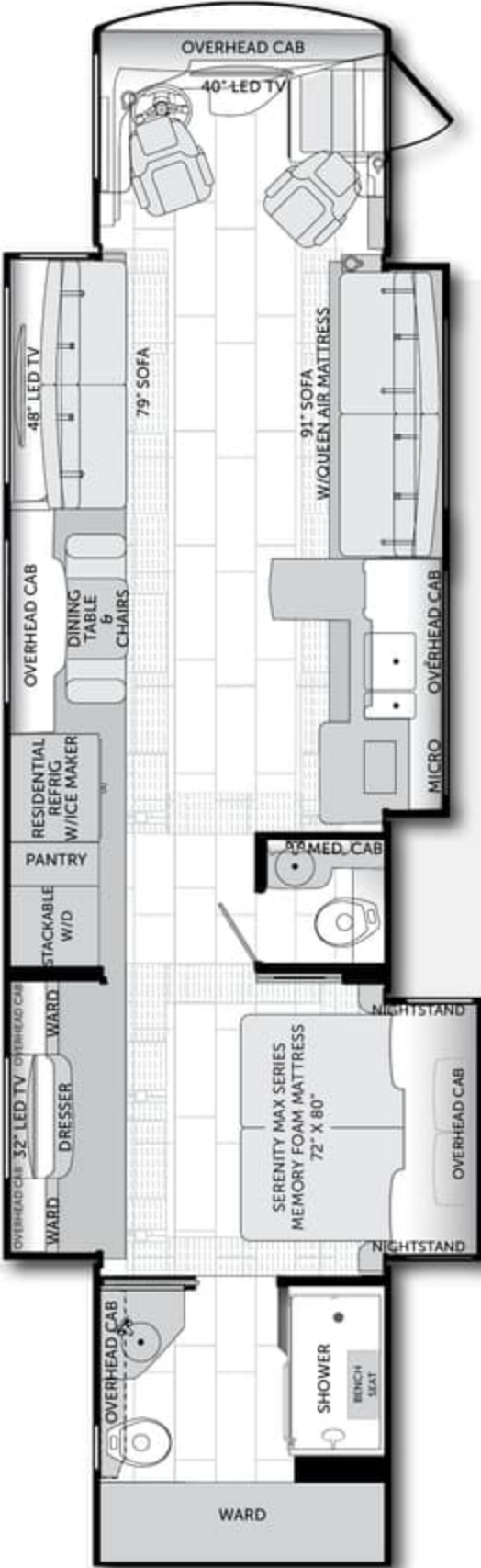


DENWOOD



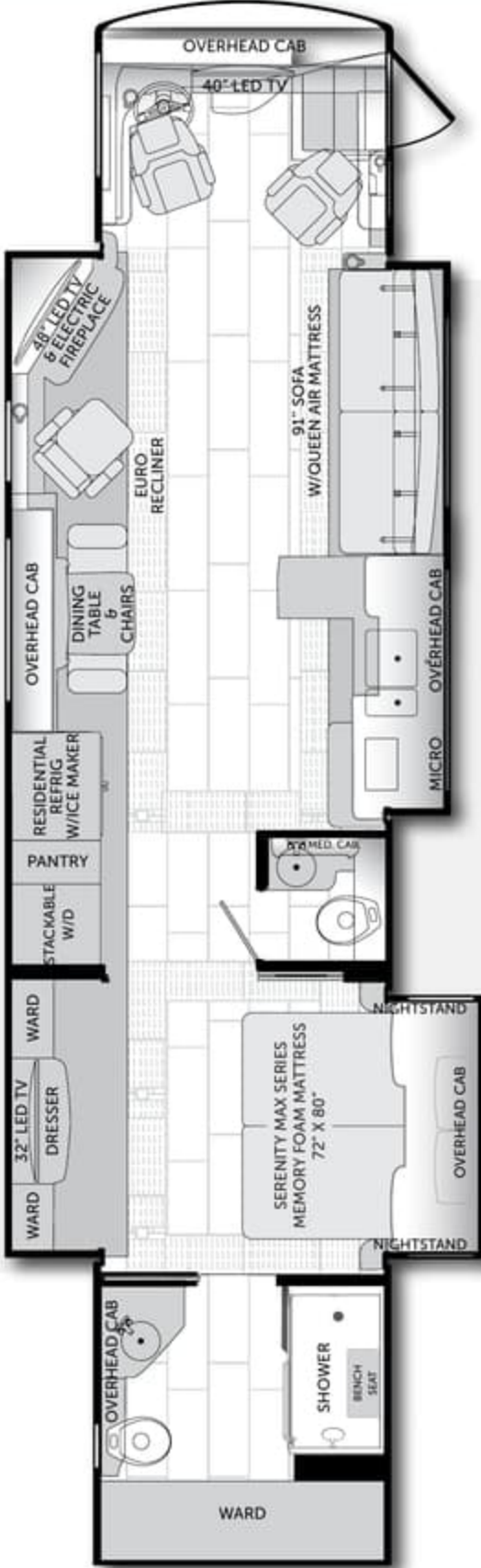
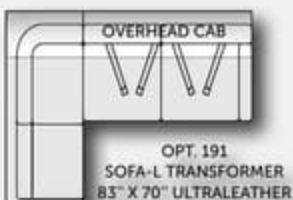
45A

OPTIONS 641



45C

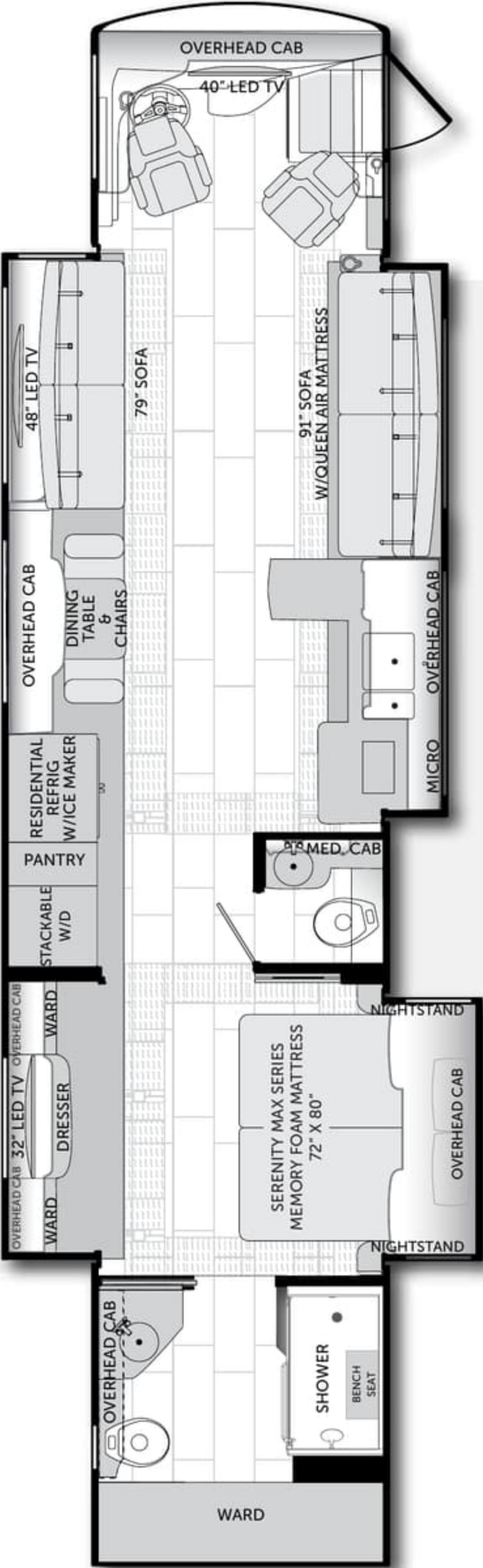
OPTIONS 191, 641





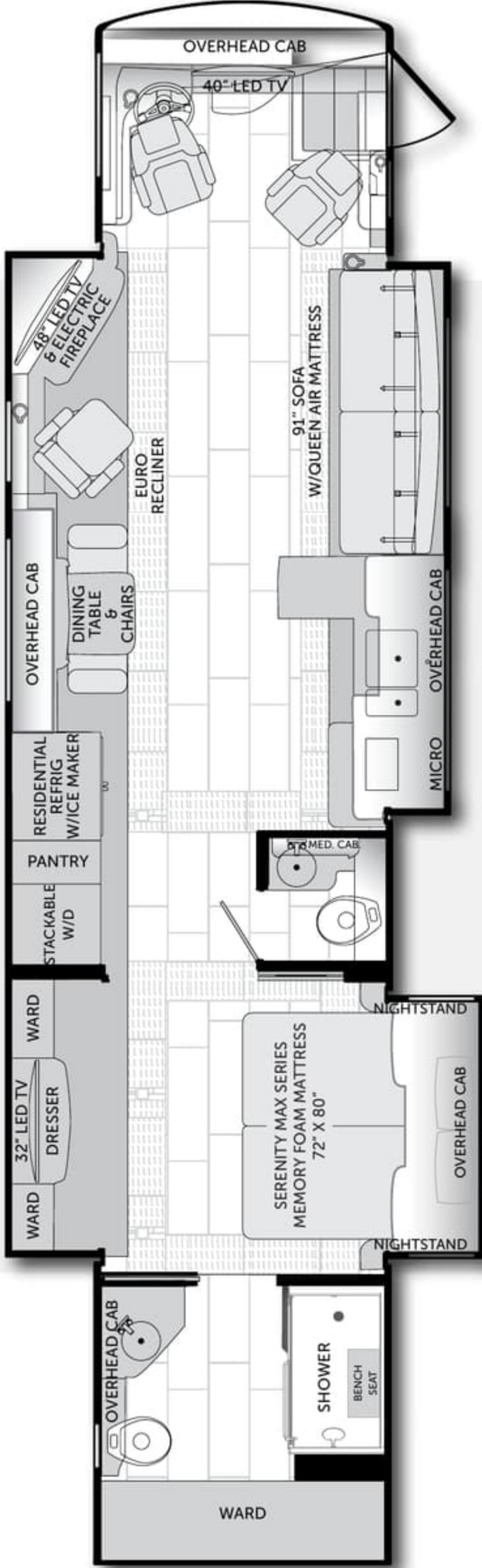
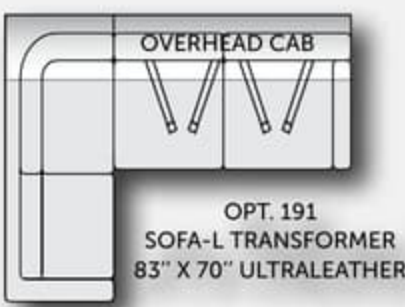
45A

OPTIONS 641



45C

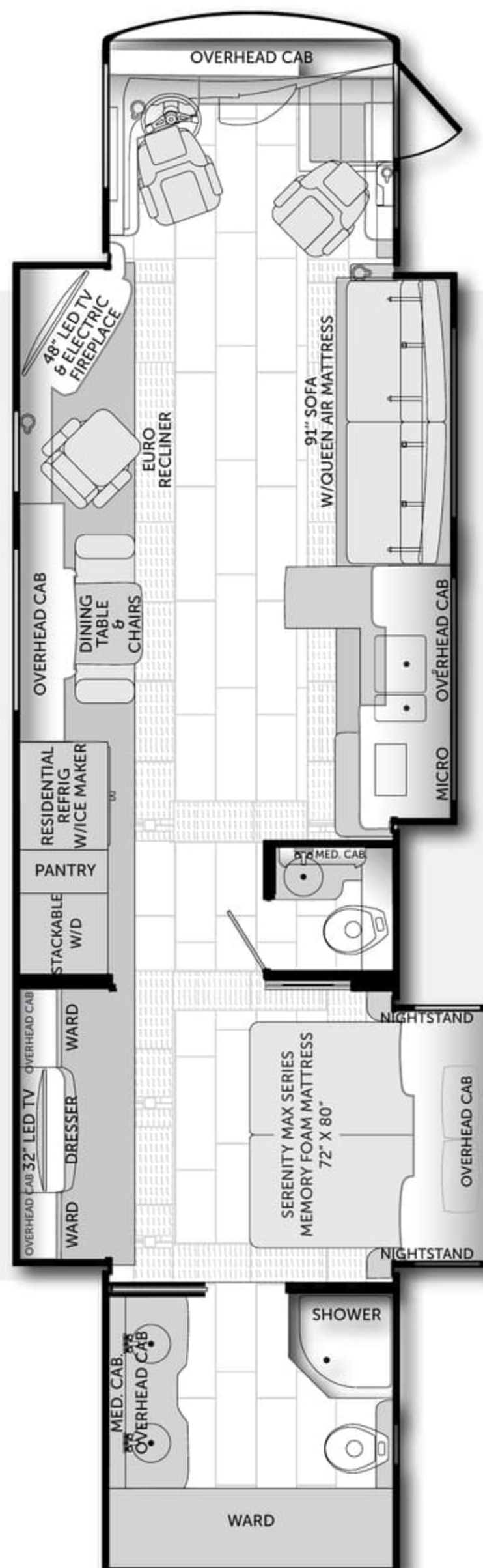
OPTIONS 191, 641





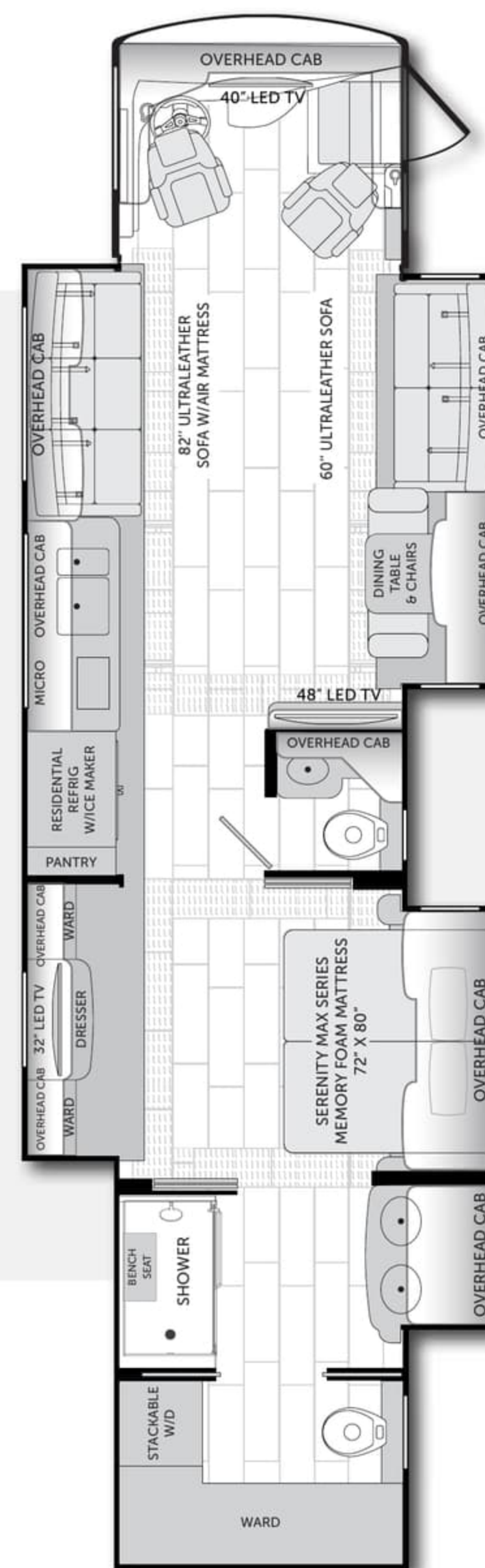
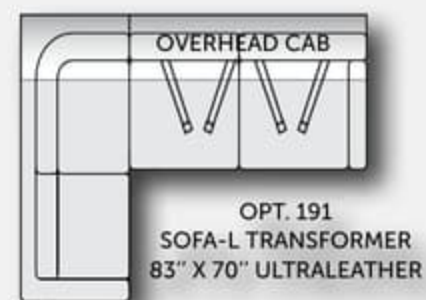






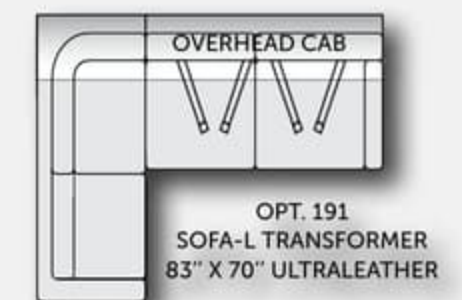
**45N**

**OPTIONS** 191, 641



45T

**OPTIONS** 191, 641





## AMERICAN EAGLE HERITAGE EDITION PACKAGE

Upgrading to the Heritage Package takes your American Eagle to the next level of luxury. This premium upgrade gives you new graphic choices, complete with Heritage Edition emblem, 12" stainless steel trim and painted awning boxes, while presenting you with an elegant virtual window in the bedroom and two choices of ThermoCraft laminated foil cabinetry inside. This package truly gives you the freedom to inspire.



This Eagle is shown with Espresso Onyx decor with upgraded Inspiration Foil.



INSPIRATION FOIL



CHOCOLATE PEAR FOIL



## AMERICAN EAGLE HERITAGE EDITION PACKAGE

Upgrading to the Heritage Package takes your American Eagle to the next level of luxury. This premium upgrade gives you new graphic choices, complete with Heritage Edition emblem, 12" stainless steel trim and painted awning boxes, while presenting you with an elegant virtual window in the bedroom and two choices of ThermoCraft laminated foil cabinetry inside. This package truly gives you the freedom to inspire.



This Eagle is shown with Espresso Onyx decor with upgraded Inspiration Foil.

INSPIRATION FOIL

CHOCOLATE PEAR FOIL





## TOP FEATURES

- Heritage Front Cap Lower Section w/Under Carriage Lighting
- Heritage Edition Emblem
- 12" Stainless Trim Package
- Painted Awning Boxes
- ThermoCraft™ Laminated Foil Cabinetry available in Inspiration or Chocolate Pear.
- Panoramic Virtual Window in Bedroom
- Heritage Edition Exterior Graphic Options (3)



## EXTERIOR OPTIONS



BREEZEWOOD



HARMONY



ROSEBROOK





## TOP FEATURES

- Heritage Front Cap Lower Section w/Under Carriage Lighting
- Heritage Edition Emblem
- 12" Stainless Trim Package
- Painted Awning Boxes
- ThermoCraft™ Laminated Foil Cabinetry available in Inspiration or Chocolate Pear.
- Panoramic Virtual Window in Bedroom
- Heritage Edition Exterior Graphic Options (3)



## EXTERIOR OPTIONS



BREEZEWOOD



HARMONY



ROSEBROOK



# STANDARDS AND OPTIONS

## INTERIOR

### GENERAL AMENITIES

- 30" Deep Full Wall Slide-Out
- 3 Hardwood Ceiling Plenums w/Integrated HVAC
- Solid Radius Hardwood Cabinetry w/Full Insert Door Design
- Hardwood Radius Countertops
- Chrome Door Pulls/Handles
- Hardwood & Fabric Window Treatments
- Wood-Trimmed Fan-Tastic® Rain Sensor, Power Roof Vents w/3-Speed Fan (3)
- Flush Bolt Latch Hardware on Pocket Doors
- Interior MultiPlex Power Management System
- Maple-Lined Cabinet Interiors
- Premium Radius Hardwood Face-Framed Cabinetry, Molding & Slide-Out Trim
- Polished Porcelain Tile w/Room Border & Decorative Glass & Stone Inserts
- 12V LED Ceiling & Task Lighting
- Solid-Surface Entry-Step w/LED Accent Lights, Power Cover, Grass Cloth Inserts & Storage
- Pop-Up 110V & USB Outlets at Dinette, Galley & Living Area
- Ambient/In-Direct Lighting

### DRIVER CONVENIENCE

- Adjustable Brake & Throttle Pedals
- Auxiliary LED Fog Lamps
- Auxiliary Start Switch
- Chrome Heated Side-View Mirrors w/Remote Adjustment, Turn Signal Indicators, Integrated Side Vision Cameras
- Driver & Passenger LED Reading Lights
- Air Horns
- Cockpit JBL Audio Package
- LED Cluster Head Lamps
- I.C.C. Light Switch
- Keyless Entry Door Access w/Key Fob
- Ergo Dash Design w/Backlit Switches
- Digital LCD Instrument & Gauge Display Panel w/Visual Customization
- Stitched French-Seam Leather Dash Cover
- Matte Finish Teak Veneer Dash Inlay
- Dual Zone HVAC w/Dedicated Passenger Control
- Multiple USB Dash Receptacles
- Power Memory Driver Seat
- One-Piece Windshield Bonded to Fiberglass & Steel
- Power Driver Window
- Powered Cockpit Privacy Vinyl Linen Window Shades & Light Blocking Blinds
- SGM Dash Climate Control System w/Defrost Booster
- Leather Smart Wheel w/Power Tilt, Tip, Telescope
- Tag Axle Dump Switch
- Top-Mounted Intermittent Windshield Wiper System w/Wet Arm

- Floor & Toe-Kick Mounted Accent Lighting
- Silverleaf® Total Coach Control System

### OPTIONAL

- Canadian Standards Build
- Custom Interior Request
- Factory V.I.P. Delivery
- High Gloss Wood Cabinetry

- Villa® 8-Way Power Driver/Passenger Seat w/Massage, Power Lumbar, Heated/Cooled Seats & Adjustable Arms (Ultraleather™ w/Suede Inserts)

### TECHNOLOGY

- Color Rear Camera Display w/One-Way Audio
- Sony® Rear-View Camera
- Dual 10" Xite Display Monitors for Radio w/GPS Navigation & Sirius® Satellite Radio\*, Cameras, System Monitoring
- Pressure Pro Tire Monitoring
- iPad Integration to Dash w/Power & Storage Behind iPad (iPad Repeats Xite Monitor Functions)
- AUX-Zone Distributes Video to Front TV for NAV/Backup Monitor/DVD
- Dual Monitors Displays Weather/Fuel Saver, Traffic Conditions, Time & Outside Temp
- Rand McNally RV Navigation
- Bluetooth Phone & Music
- Cradlepoint WiFi Router w/Range Booster & 3G/4G
- RVC iPad & Android App for Silverleaf Total Coach Control System
- Crestron® App—iPad & Lights, Blinds & Audio/Video Control

\* Subscription Required

### LIVING AREA

- Central Vacuum System
- Centralized Command Center
- Power Privacy Blinds & Linen Shades
- Front TV Overhead Cabinetry in Radius Hardwood
- Large Passenger Window

### GALLEY

- Solid-Surface Countertop w/Modern Pencil Edge Treatment
- Blum Soft-Close & Locking Drawer Guides & Door Hinges
- Chrome High-Rise Faucet w/Sprayer
- Decorative Glass Tile Backsplash
- Flush-Mount Electric 2-Burner Induction Cooktop
- Apron-Front Stainless Steel Sink w/Solid Surface Covers
- Overhead Pull-Out Pantry
- Hidden Task Lighting

### PLUMBING & ELECTRICAL

- Aqua-Hot® 600D Continuous, Tankless Hot Water System w/Multi-Zone Hydronic Heating System
- Energy Management System(50 Amp)
- Heat Pump on Rear AC Unit
- Holding Tank San-T-Flush™ System
- Inverter and Battery Monitor
- Multi-Point Water Pump Switching
- PEX Plumbing System
- Surge Guard™ Electrical System

### PROTECTION

- SensaTank™ Level Monitoring System (Interior and Exterior Monitor)
- (3) Low Profile Roof-Mounted, High-Efficiency 15,000 Btu/h A/C & Bedroom Heat Pump

### BEDROOM

- Exclusive Serenity Max Series w/Adjustable His & Her Section & Head & Foot Massage Component Included
- Cedar-Lined Wardrobe
- Full-Length Rear Wardrobe
- Handcrafted Hardwood Sculpted Headboard
- TV Hinged w/Storage, A/V Components & Electronic First Alert® Hidden Safe
- Hardwood Overhead Cabinetry Above Bed
- Premium Hardwood Radius Nightstand Tops
- Multiple USB Outlets

### ELECTRONICS

- iPad® Controller for Lights, Blind & A/V
- Winegard® In-Motion Satellite System
- Sony® Blu-ray® DVD w/Wi-Fi
- Bose® Solo Soundbar w/Subwoofer
- Sony 48" LED HDTV

- Dual Pop-Up Power Outlets
- Large Panoramic Window
- Recessed Cabinet Toekick

### APPLIANCES

- Dishwasher w/Wood Door Front
- GE® Advantium® Convection Microwave Oven
- French Door Refrigerator w/Icemaker In Door

- Whole Coach Water Filtration System
- Variable-Speed Water Pump
- Heated Tile Floor
- Waste Management System (Macerator)
- Power Water Hose Reel

- Remote Generator Start Switch
- Frosted Glass 5-Panel Privacy Doors
- Shoe Storage Rear Wardrobe

### ELECTRONICS/APPLIANCES

- Sony® 32" LED HDTV
- Sony Blu-ray® DVD Player
- Stacked Washer/Dryer



# STANDARDS AND OPTIONS

## INTERIOR

### GENERAL AMENITIES

- 30" Deep Full Wall Slide-Out
- 3 Hardwood Ceiling Plenums w/Integrated HVAC
- Solid Radius Hardwood Cabinetry w/Full Insert Door Design
- Hardwood Radius Countertops
- Chrome Door Pulls/Handles
- Hardwood & Fabric Window Treatments
- Wood-Trimmed Fan-Tastic® Rain Sensor, Power Roof Vents w/3-Speed Fan (3)
- Flush Bolt Latch Hardware on Pocket Doors
- Interior MultiPlex Power Management System
- Maple-Lined Cabinet Interiors
- Premium Radius Hardwood Face-Framed Cabinetry, Molding & Slide-Out Trim
- Polished Porcelain Tile w/Room Border & Decorative Glass & Stone Inserts
- 12V LED Ceiling & Task Lighting
- Solid-Surface Entry-Step w/LED Accent Lights, Power Cover, Grass Cloth Inserts & Storage
- Pop-Up 110V & USB Outlets at Dinette, Galley & Living Area
- Ambient/In-Direct Lighting

### DRIVER CONVENIENCE

- Adjustable Brake & Throttle Pedals
- Auxiliary LED Fog Lamps
- Auxiliary Start Switch
- Chrome Heated Side-View Mirrors w/Remote Adjustment, Turn Signal Indicators, Integrated Side Vision Cameras
- Driver & Passenger LED Reading Lights
- Air Horns
- Cockpit JBL Audio Package
- LED Cluster Head Lamps
- I.C.C. Light Switch
- Keyless Entry Door Access w/Key Fob
- Ergo Dash Design w/Backlit Switches
- Digital LCD Instrument & Gauge Display Panel w/Visual Customization
- Stitched French-Seam Leather Dash Cover
- Matte Finish Teak Veneer Dash Inlay
- Dual Zone HVAC w/Dedicated Passenger Control
- Multiple USB Dash Receptacles
- Power Memory Driver Seat
- One-Piece Windshield Bonded to Fiberglass & Steel
- Power Driver Window
- Powered Cockpit Privacy Vinyl Linen Window Shades & Light Blocking Blinds
- SGM Dash Climate Control System w/Defrost Booster
- Leather Smart Wheel w/Power Tilt, Tip, Telescope
- Tag Axle Dump Switch
- Top-Mounted Intermittent Windshield Wiper System w/Wet Arm

- Floor & Toe-Kick Mounted Accent Lighting
- Silverleaf® Total Coach Control System

#### OPTIONAL

- Canadian Standards Build
- Custom Interior Request
- Factory V.I.P. Delivery
- High Gloss Wood Cabinetry

- Villa® 8-Way Power Driver/Passenger Seat w/Massage, Power Lumbar, Heated/Cooled Seats & Adjustable Arms (Ultraleather™ w/Suede Inserts)

#### TECHNOLOGY

- Color Rear Camera Display w/One-Way Audio
- Sony® Rear-View Camera
- Dual 10" Xite Display Monitors for Radio w/GPS Navigation & Sirius® Satellite Radio\*, Cameras, System Monitoring
- Pressure Pro Tire Monitoring
- iPad Integration to Dash w/Power & Storage Behind iPad (iPad Repeats Xite Monitor Functions)
- AUX-Zone Distributes Video to Front TV for NAV/Backup Monitor/DVD
- Dual Monitors Displays Weather/Fuel Saver, Traffic Conditions, Time & Outside Temp
- Rand McNally RV Navigation
- Bluetooth Phone & Music
- Cradlepoint WiFi Router w/Range Booster & 3G/4G
- RVC iPad & Android App for Silverleaf Total Coach Control System
- Crestron® App—iPad & Lights, Blinds & Audio/Video Control

\* Subscription Required

### LIVING AREA

- Central Vacuum System
- Centralized Command Center
- Power Privacy Blinds & Linen Shades
- Front TV Overhead Cabinetry in Radius Hardwood
- Large Passenger Window

### GALLEY

- Solid-Surface Countertop w/Modern Pencil Edge Treatment
- Blum Soft-Close & Locking Drawer Guides & Door Hinges
- Chrome High-Rise Faucet w/Sprayer
- Decorative Glass Tile Backsplash
- Flush-Mount Electric 2-Burner Induction Cooktop
- Apron-Front Stainless Steel Sink w/Solid Surface Covers
- Overhead Pull-Out Pantry
- Hidden Task Lighting

### PLUMBING & ELECTRICAL

- Aqua-Hot® 600D Continuous, Tankless Hot Water System w/Multi-Zone Hydronic Heating System
- Energy Management System(50 Amp)
- Heat Pump on Rear AC Unit
- Holding Tank San-T-Flush™ System
- Inverter and Battery Monitor
- Multi-Point Water Pump Switching
- PEX Plumbing System
- Surge Guard™ Electrical System

#### PROTECTION

- SensaTank™ Level Monitoring System (Interior and Exterior Monitor)
- (3) Low Profile Roof-Mounted, High-Efficiency 15,000 Btu/h A/C & Bedroom Heat Pump

### BEDROOM

- Exclusive Serenity Max Series w/Adjustable His & Her Section & Head & Foot Massage Component Included
- Cedar-Lined Wardrobe
- Full-Length Rear Wardrobe
- Handcrafted Hardwood Sculpted Headboard
- TV Hinged w/Storage, A/V Components & Electronic First Alert® Hidden Safe
- Hardwood Overhead Cabinetry Above Bed
- Premium Hardwood Radius Nightstand Tops
- Multiple USB Outlets

#### ELECTRONICS

- iPad® Controller for Lights, Blind & A/V
- Winegard® In-Motion Satellite System
- Sony® Blu-ray® DVD w/Wi-Fi
- Bose® Solo Soundbar w/Subwoofer
- Sony 48" LED HDTV

- Dual Pop-Up Power Outlets
- Large Panoramic Window
- Recessed Cabinet Toekick

#### APPLIANCES

- Dishwasher w/Wood Door Front
- GE® Advantium® Convection Microwave Oven
- French Door Refrigerator w/Icemaker In Door

- Whole Coach Water Filtration System
- Variable-Speed Water Pump
- Heated Tile Floor
- Waste Management System (Macerator)
- Power Water Hose Reel

- Remote Generator Start Switch
- Frosted Glass 5-Panel Privacy Doors
- Shoe Storage Rear Wardrobe

#### ELECTRONICS/APPLIANCES

- Sony® 32" LED HDTV
- Sony Blu-ray® DVD Player
- Stacked Washer/Dryer



## EXTERIOR

### BATHROOM

- Residential Walk-In Shower, Full Glass Door w/2 Towel Rods, Teak Flooring & Fold-Down Seat (N/A 45N)
- Under-Mount Glass Bowl Sink w/Accent Lighting
- Modern Chrome Metal Angular Faucet/Fixtures
- Rain Shower Head
- One-Piece Solid-Surface Counter w/Integrated Sink (mid-bath)
- LED Floor Lights
- Polished Solid-Surface Countertop w/Modern Pencil Edge
- Decorative Backsplash
- Tecma® Silence Plus 2-Button Porcelain Vacuum Flush Toilets (2)
- Skylight in Shower

### LIVING ROOM

- Decorative Dinette & Folding Guest Chairs
- Dinette w/Deep-Base Cabinet Storage & File Drawer
- Euro Style Recliner (45C & 45N)
- Polished Solid-Surface Dinette Table w/Side-Out Extension
- Sofa Bed w/Air Mattress
- Oversize High-Back Sofa
- OPTIONAL**
  - Villa Ultraleather™ Expanding L-Sofa w/Airmattress (45C, 45N, 45T)

### SAFETY

- 3-Point Integrated Seat Belts at Driver & Passenger Seats
- Carbon Monoxide (CO) Detector
- LED Daytime Running Lights
- Emergency Egress Window
- Fire Extinguisher
- Lighted Exterior Grab Handle
- Momentary Courtesy Lighting at Entry & Passenger Area
- Side Docking Lamps
- Side Turn Signal Indicators
- Smoke Detector/Alarm
- LED Scare Lights
- OPTIONAL**
  - Emergency Exit Door

### GENERAL AMENITIES

- 1-90° Power Slide Tray & 1-36°/54° Manual Tray
- Air Inflation Hose w/Fittings
- Aqua-Hot® Engine Preheating
- Battery Disconnect Switches for House & Chassis
- Convenience Light in Utility Compartment
- Cummins Onan® 12.5 kW Quiet Diesel Generator on Power Slide-Out w/Automatic Start
- Exterior Sidewall Swing-Out TV (LG® 48" LED HDTV & Soundbar)
- Electrical Outlets in Luggage Compartments
- Fresh Water Hose (25')
- Full-Width Rear Rock Guard w/Stainless Logo Panel
- Integrated Rear Upper Fiberglass Wing Deflector
- Keyless Entry Touch Pad/Entry Handle Integrated
- Maintenance-Free (8) Absorbed Glass Mat 6-Volt Batteries (Group GC2)
- "One Key" System (Luggage & Entry Doors)
- Painted Kick Plate Under Entry Door
- Protective Front Mask
- Pure Sine Wave Inverter/Chargers (2800w)
- Power Cord Reel (50 Amp)
- Power Cord Remote (Key Fob)
- Power Bus-Style Double Entry Step
- Power Luggage Door Locks (Select Doors) w/Remote Key Fob
- Rear Engine Access w/Power Lift Gate
- Roof-Mounted Engine Air Intake
- Roof Vent Rain Covers
- Solar Charging Panel (95w)
- Strut-Assisted Side-Hinged Luggage Doors
- Under Chassis Lighting
- Windshield Washer 1.5-Gallon Reservoir
- Window Silks
- OPTIONAL**
  - 6" Polished Stainless Steel Exterior Trim
  - Custom Exterior Paint Color Request
  - Two-Piece Aluminum Rear Ladder
  - King Stationary Satellite System

### AWNINGS/WINDOWS/DOORS

- 33" Avionics Entry Door w/Deadbolt & Pneumatic Air Latches
- Entry Screen Door w/Logo Kick Plate
- Frameless Flush Mount Windows
- Girard Window Awnings
- Powered Entry Door Awning
- Roof-Mounted Girard Nova 2-stage Power Awnings (2) w/Wind Sensor System/LED Lights
- Slide-Out Topper Awnings

### CONSTRUCTION

- Automotive Windshield Bonded to Steel Super Structure & Fiberglass
- Quiet-Cool Integrated Roof HVAC System w/Hidden Vents
- 5-Layer Flooring w/3" Bead Foam Insulation
- 6-Layer Radius Roof w/Bead Foam Insulation
- Aluminum-Framed Wall Construction
- Central Electrical Panel for 120V/12V AC/DC
- Dense Bead Foam Insulation Throughout
- Premium Automotive Full Body Paint w/Sand & Buff High-Gloss Finish
- Fiberglass Front and Rear Quarter Panels
- Full Fiberglass Front & Rear Caps
- Gel Coat Fiberglass Exterior Sidewalls w/No Wood Substrate
- Heated Water and Holding Tank Compartments
- Interlocking Aluminum Roof, Sidewall, & Floor Connections
- Insulated Aluminum Framed & Paneled Luggage Compartment Doors
- One-Piece Molded Fiberglass Roof w/Radius Corners & Seamless Transition to Caps
- Pebble-Finished Fiberglass Basement Lining
- Steel Construction on Front Bulkhead
- Sound Absorption Material Front, Rear & Engine
- Vacu-bond® Sidewall, Roof, Floor & Rear Wall

### LIBERTY® CHASSIS

- Ultrasteer™; Independent Tag-Axle Suspension w/Passive Steering
- ZF Independent Front Suspension up to 60° Wheel Cut
- Bendix® All-Wheel Air Disc Brakes
- Chassis Filter Service Center
- 13 Gallon DEF Tank
- Aluminum Wheels (8)
- Anti-Lock Brake System (ABS)
- Automatic 4-Point Dual (Air & Hydraulic) Leveling System
- Automatic Traction Control
- Custom-Tuned Sachs® Shocks
- Dual-Fuel Fill Doors – Locking
- Heavy-Duty Steel Bridge Structure
- Engine Block Heater
- V-Ride® T20 20,000# Rear Air Suspension
- Side Radiator Configuration
- Two 1900 CCA Maintenance Free Chassis Batteries



## EXTERIOR

### BATHROOM

- Residential Walk-In Shower, Full Glass Door w/2 Towel Rods, Teak Flooring & Fold-Down Seat (N/A 45N)
- Under-Mount Glass Bowl Sink w/Accent Lighting
- Modern Chrome Metal Angular Faucet/Fixtures
- Rain Shower Head
- One-Piece Solid-Surface Counter w/Integrated Sink (mid-bath)
- LED Floor Lights
- Polished Solid-Surface Countertop w/Modern Pencil Edge
- Decorative Backsplash
- Tecma® Silence Plus 2-Button Porcelain Vacuum Flush Toilets (2)
- Skylight in Shower

### LIVING ROOM

- Decorative Dinette & Folding Guest Chairs
- Dinette w/Deep-Base Cabinet Storage & File Drawer
- Euro Style Recliner (45C & 45N)
- Polished Solid-Surface Dinette Table w/Slide-Out Extension
- Sofa Bed w/Air Mattress
- Oversize High-Back Sofa
- Villa Ultraleather™ Expanding L-Sofa w/Airmattress (45C, 45N, 45T)

#### OPTIONAL

### SAFETY

- 3-Point Integrated Seat Belts at Driver & Passenger Seats
- Carbon Monoxide (CO) Detector
- LED Daytime Running Lights
- Emergency Egress Window
- Fire Extinguisher
- Lighted Exterior Grab Handle
- Momentary Courtesy Lighting at Entry & Passenger Area
- Side Docking Lamps
- Side Turn Signal Indicators
- Smoke Detector/Alarm
- LED Scare Lights

#### OPTIONAL

- Emergency Exit Door

### GENERAL AMENITIES

- 1-90" Power Slide Tray & 1-36"/54" Manual Tray
- Air Inflation Hose w/Fittings
- Aqua-Hot® Engine Preheating
- Battery Disconnect Switches for House & Chassis
- Convenience Light in Utility Compartment
- Cummins Onan® 12.5 kW Quiet Diesel Generator on Power Slide-Out w/Automatic Start
- Exterior Sidewall Swing-Out TV (LG® 48" LED HDTV & Soundbar)
- Electrical Outlets in Luggage Compartments
- Fresh Water Hose (25')
- Full-Width Rear Rock Guard w/Stainless Logo Panel
- Integrated Rear Upper Fiberglass Wing Deflector
- Keyless Entry Touch Pad/Entry Handle Integrated
- Maintenance-Free (8) Absorbed Glass Mat 6-Volt Batteries (Group GC2)
- "One Key" System (Luggage & Entry Doors)
- Painted Kick Plate Under Entry Door
- Protective Front Mask
- Pure Sine Wave Inverter/Chargers (2800w)
- Power Cord Reel (50 Amp)
- Power Cord Remote (Key Fob)
- Power Bus-Style Double Entry Step
- Power Luggage Door Locks (Select Doors) w/Remote Key Fob
- Rear Engine Access w/Power Lift Gate
- Roof-Mounted Engine Air Intake
- Roof Vent Rain Covers
- Solar Charging Panel (95w)
- Strut-Assisted Side-Hinged Luggage Doors
- Under Chassis Lighting
- Windshield Washer 1.5-Gallon Reservoir
- Window Silks

#### OPTIONAL

- 6" Polished Stainless Steel Exterior Trim
- Custom Exterior Paint Color Request
- Two-Piece Aluminum Rear Ladder
- King Stationary Satellite System

### AWNINGS/WINDOWS/DOORS

- 33" Avionics Entry Door w/Deadbolt & Pneumatic Air Latches
- Entry Screen Door w/Logo Kick Plate
- Frameless Flush Mount Windows
- Girard Window Awnings
- Powered Entry Door Awning
- Roof-Mounted Girard Nova 2-stage Power Awnings (2) w/Wind Sensor System/LED Lights
- Slide-Out Topper Awnings

### CONSTRUCTION

- Automotive Windshield Bonded to Steel Super Structure & Fiberglass
- Quiet-Cool Integrated Roof HVAC System w/Hidden Vents
- 5-Layer Flooring w/3" Bead Foam Insulation
- 6-Layer Radius Roof w/Bead Foam Insulation
- Aluminum-Framed Wall Construction
- Central Electrical Panel for 120V/12V AC/DC
- Dense Bead Foam Insulation Throughout
- Premium Automotive Full Body Paint w/Sand & Buff High-Gloss Finish
- Fiberglass Front and Rear Quarter Panels
- Full Fiberglass Front & Rear Caps
- Gel Coat Fiberglass Exterior Sidewalls w/No Wood Substrate
- Heated Water and Holding Tank Compartments
- Interlocking Aluminum Roof, Sidewall, & Floor Connections
- Insulated Aluminum Framed & Paneled Luggage Compartment Doors
- One-Piece Molded Fiberglass Roof w/Radius Corners & Seamless Transition to Caps
- Pebble-Finished Fiberglass Basement Lining
- Steel Construction on Front Bulkhead
- Sound Absorption Material Front, Rear & Engine
- Vacu-bond® Sidewall, Roof, Floor & Rear Wall

### LIBERTY® CHASSIS

- Ultrasteer™; Independent Tag-Axle Suspension w/Passive Steering
- ZF Independent Front Suspension up to 60" Wheel Cut
- Bendix® All-Wheel Air Disc Brakes
- Chassis Filter Service Center
- 13 Gallon DEF Tank
- Aluminum Wheels (8)
- Anti-Lock Brake System (ABS)
- Automatic 4-Point Dual (Air & Hydraulic) Leveling System
- Automatic Traction Control
- Custom-Tuned Sachs® Shocks
- Dual-Fuel Fill Doors – Locking
- Heavy-Duty Steel Bridge Structure
- Engine Block Heater
- V-Ride® T20 20,000# Rear Air Suspension
- Side Radiator Configuration
- Two 1900 CCA Maintenance Free Chassis Batteries



## WEIGHTS, MEASURES, & ENGINE SPECS

MODEL	45A	45C	45N	45T
Wheelbase (inches)	302"	302"	302"	302"
Overall Length <sup>4</sup>	44'-11.5"	44'-11.5"	44' 11.5"	44' 11.5"
Overall Height (with A/C) <sup>5, 6</sup>	12' 11"	12' 11"	12' 11"	12' 11"
Overall Width (maximum) <sup>5, 6</sup>	102"	102"	102"	102"
Interior Height (maximum)	84"	84"	84"	84"
Interior Width (maximum)	96"	96"	96"	96"
Fresh Water Holding Tank (gal)	100	100	100	100
Grey Water Holding Tank (gal)	60	60	60	60
Black Water Holding Tank (gal)	40	40	40	40

### ENGINE SPECS CHASSIS — LIBERTY 600®

Model	Freightliner® SLM Series
Engine	Cummins® ISX15 with 3-Stage Engine Brake
Torque	1,950 lb-ft @ 1,200 RPM
Horsepower	600HP
Transmission	Allison® 4000 MH, 6-Speed with Electronic Shifter
Alternator	270-Amp Leece-Neville
Front Tires	315/80R 22.5 Michelin® Radial (2)
Rear Tires	315/80R 22.5 Michelin® Radial (6)

MODEL	45A	45C	45N	45T
GVWR (lbs) <sup>1</sup>	51,000	51,000	51,000	51,000
Front GAWR (lbs) <sup>2</sup>	17,000	17,000	17,000	17,000
Rear GAWR (lbs) <sup>2</sup>	20,000	20,000	20,000	20,000
Tag Axle GAWR (lbs) <sup>2</sup>	14,000	14,000	14,000	14,000
GCWR (lbs) <sup>2</sup>	66,000	66,000	66,000	66,000
Hitch Rating Weight (lbs) <sup>††</sup>	15,000	15,000	15,000	15,000
Tongue Weight (lbs) <sup>†</sup>	1,500	1,500	1,500	1,500
Fuel Capacity (gal)	150	150	150	150



## WEIGHTS, MEASURES, & ENGINE SPECS

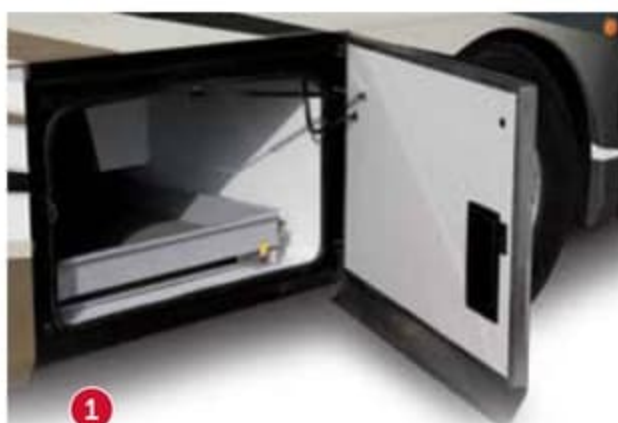
MODEL	45A	45C	45N	45T
Wheelbase (inches)	302"	302"	302"	302"
Overall Length <sup>4</sup>	44'-11.5"	44'-11.5"	44' 11.5"	44' 11.5"
Overall Height (with A/C) <sup>5, 6</sup>	12' 11"	12' 11"	12' 11"	12' 11"
Overall Width (maximum) <sup>5, 6</sup>	102"	102"	102"	102"
Interior Height (maximum)	84"	84"	84"	84"
Interior Width (maximum)	96"	96"	96"	96"
Fresh Water Holding Tank (gal)	100	100	100	100
Grey Water Holding Tank (gal)	60	60	60	60
Black Water Holding Tank (gal)	40	40	40	40

ENGINE SPECS CHASSIS — LIBERTY 600®		MODEL	45A	45C	45N	45T
Model	Freightliner® SLM Series	GVWR (lbs) <sup>1</sup>	51,000	51,000	51,000	51,000
Engine	Cummins® ISX15 with 3-Stage Engine Brake	Front GAWR (lbs) <sup>2</sup>	17,000	17,000	17,000	17,000
Torque	1,950 lb-ft @ 1,200 RPM	Rear GAWR (lbs) <sup>2</sup>	20,000	20,000	20,000	20,000
Horsepower	600HP	Tag Axle GAWR (lbs) <sup>2</sup>	14,000	14,000	14,000	14,000
Transmission	Allison® 4000 MH, 6-Speed with Electronic Shifter	GCWR (lbs) <sup>2</sup>	66,000	66,000	66,000	66,000
Alternator	270-Amp Leece-Neville	Hitch Rating Weight (lbs) <sup>††</sup>	15,000	15,000	15,000	15,000
Front Tires	315/80R 22.5 Michelin® Radial (2)	Tongue Weight (lbs) <sup>†</sup>	1,500	1,500	1,500	1,500
Rear Tires	315/80R 22.5 Michelin® Radial (6)	Fuel Capacity (gal)	150	150	150	150



# RIDING ON CONFIDENCE

An exceptionally built motor coach should ride on an equally exceptional foundation. The Liberty Chassis features a Freightliner V-Ride™ rear/drive axle for increased sway control and better coach handling. The heavy-duty steel bridge, along with the Freightliner UltraSteer® B-Series tag axle, provides added strength, increased maneuverability and better handling for confident command of the road ahead.



1



2

**1 THE INDUSTRY'S LARGEST STORAGE**  
The Liberty Chassis design creates extreme passthrough basement storage space for taller compartments, easier access and loads of room. American Eagle also features a one-key system for all storage and power door locks with key fob on select doors.

**2 ZF DOUBLE WISHBONE INDEPENDENT FRONT SUSPENSION & PREMIUM SACHS® SHOCKS**

The front suspension features up to 60° wheel cut for unmatched handling backed by the dependability of the ZF name, while custom-tuned Sachs shocks heighten comfort and increase safety.

**3 BENDIX® DISC BRAKES**  
Bendix front wheel air disc brakes deliver uniform stopping power and better steering control, while reducing brake fade and stopping noise.

**4 V-RIDE™ SUSPENSION**  
The V-Ride axle suspension features increased towing capacity, allowing you to carry more gear while providing a durable, comfortable ride.



3



4



**FREIGHTLINER ULTRASTEER I-SERIES**  
The UltraSteer I-Series tag axle enhances independent suspension to provide an overall-improved ride, quality, and stable drivability to deliver complete control and precise maneuvering in all conditions.



# RIDING ON CONFIDENCE



An exceptionally built motor coach should ride on an equally exceptional foundation. The Liberty Chassis features a Freightliner V-Ride™ rear/drive axle for increased sway control and better coach handling. The heavy-duty steel bridge, along with the Freightliner UltraSteer® B-Series tag axle, provides added strength, increased maneuverability and better handling for confident command of the road ahead.



1



2

**1 THE INDUSTRY'S LARGEST STORAGE**  
The Liberty Chassis design creates extreme passthrough basement storage space for taller compartments, easier access and loads of room. American Eagle also features a one-key system for all storage and power door locks with key fob on select doors.

**2 ZF DOUBLE WISHBONE INDEPENDENT FRONT SUSPENSION & PREMIUM SACHS® SHOCKS**

The front suspension features up to 60° wheel cut for unmatched handling backed by the dependability of the ZF name, while custom-tuned Sachs shocks heighten comfort and increase safety.

**3 BENDIX® DISC BRAKES**

Bendix front wheel air disc brakes deliver uniform stopping power and better steering control, while reducing brake fade and stopping noise.

**4 V-RIDE™ SUSPENSION**

The V-Ride axle suspension features increased towing capacity, allowing you to carry more gear while providing a durable, comfortable ride.



3



4



ULTRA STEER  
I-SERIES

**FREIGHTLINER ULTRA STEER I-SERIES**

The UltraSteer I-Series tag axle enhances independent suspension to provide an overall-improved ride, quality, and stable drivability to deliver complete control and precise maneuvering in all conditions.



2018

# AMERICAN EAGLE

**SERVICE BACKED BY AMERICAN PRIDE** American Eagle is backed by American Coach's RV OWNERCARE warranty program, a limited one-year/15,000-mile coach warranty and three-year/45,000-mile structural warranty, whichever occurs first. And with each warranty comes a network of trustworthy dealers and regional technical centers ready to get you back on the road.



[www.americancoach.com](http://www.americancoach.com)

YOUR LOCAL DEALER

**REV GROUP**

American Coach is part of REV Recreation Group, a division of REV Group, Inc., a family of 26 industry-leading motor vehicle brands. At REV Group, we innovate, design and build products that connect and protect thousands of people every day—our trusted vehicles are engineered with the utmost rigor and precision to deliver the highest levels of performance, reliability, durability and safety.

**IMPORTANT — PLEASE READ:** Product information, photography and illustrations included in this publication were as accurate as possible at the time of printing. For further product information and changes, please visit our website at [www.AmericanCoach.com](http://www.AmericanCoach.com) or contact your local American Coach dealer. Prices, materials, design and specifications are subject to change without notice. All weights, fuel, liquid capacities and dimensions are approximate. American Coach has designed its recreational vehicles to provide a variety of uses for its customers. Each vehicle features optimal seating, sleeping, storage and fluid capacities. The user is responsible for selecting the proper combination of loads (i.e., occupants, equipment, fluids, cargo, etc.) to ensure that the vehicle's capacities are not exceeded.

#### DISCLAIMERS

1. GVWR (Gross Vehicle Weight Rating) is the maximum permissible weight of this fully loaded motor home. The GVWR is equal to or greater than the sum of the (UVW) unloaded vehicle weight plus the (OCCC) occupant cargo-carrying capacity.\*
2. GAWR (Gross Axle Weight Rating) is the maximum permissible loaded weight a specific axle is designed to carry.
3. GCWR (Gross Combined Weight Rating) is the value specified by the motor home manufacturer as the maximum allowable loaded weight of this motor home with its towed vehicle. Towing and braking capacities may be different. Refer to American Coach and chassis manufacturer's manuals for complete information.
4. Length measured from front bumper to rear bumper (excludes accessories).
5. Excludes safety equipment and awnings.
6. Motor homes feature a body width over 96" which will restrict your access to certain roads. Before purchasing, you should research any state and/or province road laws which may affect your usage. N/A = Not Applicable

† The chassis manufacturer recommends the installation of a supplemental brake control system to activate the brakes on the vehicle or trailer you are towing. Hitch receiver ratings expressed are maximum for the hitch receiver installed and may require the purchase of additional equipment that is dependant on the weight of the towed load. Consult with hitch receiver manufacturer for further information.

†† The Minimum Towable Load of this vehicle is the available weight capacity, up to GCWR, when the coach is fully loaded to maximum GVWR. However, if the coach is loaded to something less than maximum GVWR, that extra available weight capacity can be added to your Towable Load. For example, if your coach is loaded to 1,000 lbs less than maximum GVWR, your Towable Load increases accordingly. Do not exceed the hitch rating weight, GVWR or GCWR.

\* UVW and OCCC are found on the label containing the federal certification tag in each RV.

\*\* Seatbelts and locations are shown in the brochure for display purposes only. Actual numbers and locations will vary by model.

\*\*\* All 2017 REV Recreation Group motorhomes include a limited one-year/15,000-mile coach warranty and three-year/45,000-mile structural warranty, whichever occurs first, and is fully transferable for the first 12 months.

**CONTACT:** To locate a dealer near you, visit our website at [www.AmericanCoach.com](http://www.AmericanCoach.com) or call 1-800-322-8216. We can also be contacted at American Coach Customer Care, P.O. Box 31, Decatur, IN 46733.

©2017 REV Group, Inc. Printed in the USA. Inventory Control Number EAGLE18B1, 05/17. Model Year 2018, First Edition.



2018

# AMERICAN EAGLE

**SERVICE BACKED BY AMERICAN PRIDE** American Eagle is backed by American Coach's RV OWNERCARE warranty program, a limited one-year/15,000-mile coach warranty and three-year/45,000-mile structural warranty, whichever occurs first. And with each warranty comes a network of trustworthy dealers and regional technical centers ready to get you back on the road.



[www.americancoach.com](http://www.americancoach.com)



American Coach is part of REV Recreation Group, a division of REV Group, Inc., a family of 26 industry-leading motor vehicle brands. At REV Group, we innovate, design and build products that connect and protect thousands of people every day—our trusted vehicles are engineered with the utmost rigor and precision to deliver the highest levels of performance, reliability, durability and safety.

**IMPORTANT — PLEASE READ:** Product information, photography and illustrations included in this publication were as accurate as possible at the time of printing. For further product information and changes, please visit our website at [www.AmericanCoach.com](http://www.AmericanCoach.com) or contact your local American Coach dealer. Prices, materials, design and specifications are subject to change without notice. All weights, fuel, liquid capacities and dimensions are approximate. American Coach has designed its recreational vehicles to provide a variety of uses for its customers. Each vehicle features optimal seating, sleeping, storage and fluid capacities. The user is responsible for selecting the proper combination of loads (i.e., occupants, equipment, fluids, cargo, etc.) to ensure that the vehicle's capacities are not exceeded.

#### DISCLAIMERS

1. GVWR (Gross Vehicle Weight Rating) is the maximum permissible weight of this fully loaded motor home. The GVWR is equal to or greater than the sum of the (UVW) unloaded vehicle weight plus the (OCCC) occupant cargo-carrying capacity\*.
  2. GAWR (Gross Axle Weight Rating) is the maximum permissible loaded weight a specific axle is designed to carry.
  3. GCWR (Gross Combined Weight Rating) is the value specified by the motor home manufacturer as the maximum allowable loaded weight of this motor home with its towed vehicle. Towing and braking capacities may be different. Refer to American Coach and chassis manufacturer's manuals for complete information.
  4. Length measured from front bumper to rear bumper (excludes accessories).
  5. Excludes safety equipment and awnings.
  6. Motor homes feature a body width over 96" which will restrict your access to certain roads. Before purchasing, you should research any state and/or province road laws which may affect your usage. N/A = Not Applicable
- † The chassis manufacturer recommends the installation of a supplemental brake control system to activate the brakes on the vehicle or trailer you are towing. Hitch receiver ratings expressed are maximum for the hitch receiver installed and may require the purchase of additional equipment that is dependant on the weight of the towed load. Consult with hitch receiver manufacturer for further information.
- †† The Minimum Towable Load of this vehicle is the available weight capacity, up to GCWR, when the coach is fully loaded to maximum GVWR. However, if the coach is loaded to something less than maximum GVWR, that extra available weight capacity can be added to your Towable Load. For example, if your coach is loaded to 1,000 lbs less than maximum GVWR, your Towable Load increases accordingly. Do not exceed the hitch rating weight, GVWR or GCWR.
- \* UVW and OCCC are found on the label containing the federal certification tag in each RV.
- \*\* Seatbelts and locations are shown in the brochure for display purposes only. Actual numbers and locations will vary by model.
- \*\*\* All 2017 REV Recreation Group motorhomes include a limited one-year/15,000-mile coach warranty and three-year/45,000-mile structural warranty, whichever occurs first, and is fully transferable for the first 12 months.

**CONTACT:** To locate a dealer near you, visit our website at [www.AmericanCoach.com](http://www.AmericanCoach.com) or call 1-800-322-8216. We can also be contacted at American Coach Customer Care, P.O. Box 31, Decatur, IN 46733.

©2017 REV Group, Inc. Printed in the USA. Inventory Control Number EAGLE18B1, 05/17. Model Year 2018, First Edition.