

MONTANA

HIGH COUNTRY

**LUXURY THAT STARTS WITH
A SOLID FOUNDATION**



PATENT-PENDING DESIGN
FRONT WINDSHIELD DESIGN



**OVER
100K**

MONTANA
FIFTH WHEELS ON
THE ROAD TODAY



MONTANA

HIGH COUNTRY

**LUXURY THAT STARTS WITH
A SOLID FOUNDATION**



**PATENT-PENDING DESIGN
FRONT WINDSHIELD DESIGN**



**OVER
100K**

**MONTANA
FIFTH WHEELS ON
THE ROAD TODAY**





**Keystone RV
Company**

When Cole Davis founded Keystone RV in 1996 his vision was clear: Build a quality RV loaded with features priced thousands less than other RVs on the market. To accomplish his goal, Cole built a strong team, focused on keeping overhead low, and empowered employees closest to the customer to make decisions. Within a few short months after opening the doors, Keystone produced its very first camper. Delivering big on quality, features and value, the public fell in love and a star was born.

As customer's appetite skyrocketed, new Keystone models were added to satisfy growing customer demand. Along with this tremendous growth came the need for expanded production. To meet this need, more manufacturing plants were built and staffed. By the beginning of 2000, Keystone was leading the industry in fifth wheel and trailer sales. Today, Keystone RV Company has grown to encompass over 1 million square feet of manufacturing space with facilities in Goshen, Indiana and Pendleton, Oregon. While Keystone is no longer the small "start up" we once were, our mission has remained true to Cole's vision—"Do the job right and make sure we deliver a quality product every time."



THE COMPLETE CHOICE

FOR MORE INFORMATION ON KEYSTONE RV VISIT
www.bit.ly/10aoOLK



SCAN ME

FOR MORE
INFORMATION
ON KEYSTONE RV
COMPANY





**Keystone RV
Company**

When Cole Davis founded Keystone RV in 1996 his vision was clear: Build a quality RV loaded with features priced thousands less than other RVs on the market. To accomplish his goal, Cole built a strong team, focused on keeping overhead low, and empowered employees closest to the customer to make decisions. Within a few short months after opening the doors, Keystone produced its very first camper. Delivering big on quality, features and value, the public fell in love and a star was born.

As customer's appetite skyrocketed, new Keystone models were added to satisfy growing customer demand. Along with this tremendous growth came the need for expanded production. To meet this need, more manufacturing plants were built and staffed. By the beginning of 2000, Keystone was leading the industry in fifth wheel and trailer sales. Today, Keystone RV Company has grown to encompass over 1 million square feet of manufacturing space with facilities in Goshen, Indiana and Pendleton, Oregon. While Keystone is no longer the small "start up" we once were, our mission has remained true to Cole's vision—"Do the job right and make sure we deliver a quality product every time."



THE COMPLETE CHOICE

FOR MORE INFORMATION ON KEYSTONE RV VISIT
www.bit.ly/10aoOLK



SCAN ME

FOR MORE
INFORMATION
ON KEYSTONE RV
COMPANY





MONTANA

HIGH COUNTRY

**ONE OF THE MOST
AWARDED BRANDS IN
THE INDUSTRY**



Montana was created in 1998 for the sole purpose of providing a high-quality, luxury fifth wheel at an affordable price. By listening to customers, Montana delivered a fifth wheel to lead the industry in quality, style, innovation and value. Experienced RVers responded to the painstaking details crafted into every square inch of every floor plan as Montana quickly revolutionized the fifth wheel market in the late 90's.

In 2001, Montana finished the year as the #1 selling fifth wheel brand in the United States for the first time and has remained the #1 selling luxury fifth wheel for 17 consecutive years.

Today, Montana continues to lead the industry in creating spacious, highly functional, durable and dependable luxury fifth wheels. Every Montana is crafted with the confidence that comes from 19 years of quality fifth wheel building expertise. We continue to raise both structural standards and customer expectations through our cutting-edge technology and handcrafted skills that put our manufacturing in a class by itself.

The future promises new and exciting developments to enhance the ultimate RVing experience that only a Montana can deliver. Montana's patent pending front cap windshield design is just the latest in a long history of innovation.

With over 100,000 Montana fifth wheels on the road today and the most repeat buyers of any towable brand in the industry, the Montana legacy continues to grow larger and larger year after year.



MONTANA

HIGH COUNTRY

**ONE OF THE MOST
AWARDED BRANDS IN
THE INDUSTRY**



Montana was created in 1998 for the sole purpose of providing a high-quality, luxury fifth wheel at an affordable price. By listening to customers, Montana delivered a fifth wheel to lead the industry in quality, style, innovation and value. Experienced RVers responded to the painstaking details crafted into every square inch of every floor plan as Montana quickly revolutionized the fifth wheel market in the late 90's.

In 2001, Montana finished the year as the #1 selling fifth wheel brand in the United States for the first time and has remained the #1 selling luxury fifth wheel for 17 consecutive years.

Today, Montana continues to lead the industry in creating spacious, highly functional, durable and dependable luxury fifth wheels. Every Montana is crafted with the confidence that comes from 19 years of quality fifth wheel building expertise. We continue to raise both structural standards and customer expectations through our cutting-edge technology and handcrafted skills that put our manufacturing in a class by itself.

The future promises new and exciting developments to enhance the ultimate RVing experience that only a Montana can deliver. Montana's patent pending front cap windshield design is just the latest in a long history of innovation.

With over 100,000 Montana fifth wheels on the road today and the most repeat buyers of any towable brand in the industry, the Montana legacy continues to grow larger and larger year after year.

331RL KITCHEN



331RL BEDROOM



331RL BATHROOM VANITY



TRUSTED RESULTS



LUXURY FIFTH WHEEL 17 CONSECUTIVE YEARS

MORE CUSTOMERS HAVE PURCHASED MONTANA FIFTH WHEELS

RVDA QUALITY CIRCLE A

RV DEALERS HAVE VOTE

331RL KITCHEN



331RL BEDROOM



331RL BATHROOM VANITY



TRUSTED RESULTS



LUXURY FIFTH WHEEL 17 CONSECUTIVE YEARS

MORE CUSTOMERS HAVE PURCHASED MONTANA FIFTH WHEELS

RVDA QUALITY CIRCLE A

RV DEALERS HAVE VOTE



331RL SHOWN IN LINEN DECOR



345RL SHOWN IN ESTATE DECOR

Trust: state of being relied on. For over 19 years Montana has worked diligently to earn customers' trust. Through better design and better value, we continue to earn it!



OVER 100K MONTANA
FIFTH WHEELS ON
THE ROAD TODAY

AWARD RECIPIENT 13 YEARS

ED US TO RECEIVE THIS AWARD

100,000TH MONTANA PRODUCED IN 2017

NO OTHER FIFTH WHEEL BRAND HAS ACHIEVED THIS MILESTONE



331RL SHOWN IN LINEN DECOR



345RL SHOWN IN ESTATE DECOR

Trust: state of being relied on. For over 19 years Montana has worked diligently to earn customers' trust. Through better design and better value, we continue to earn it!



OVER 100K | **MONTANA**
FIFTH WHEELS ON
THE ROAD TODAY

AWARD RECIPIENT 13 YEARS

ED US TO RECEIVE THIS AWARD

100,000TH MONTANA PRODUCED IN 2017

NO OTHER FIFTH WHEEL BRAND HAS ACHIEVED THIS MILESTONE

FLOORPLAN

MONTANA HIGH CO



WEIGHT	CC	HITCH	LENGTH	HEIGHT	FRESH WATER	WASTE WATER	GRAY WATER	LPG
10745	3555	2395	34' 3"	12' 9"	66	49	98	60

REAR LIVING | 305RL
RV REFRIGERATOR



WEIGHT	CC	HITCH	LENGTH	HEIGHT	FRESH WATER	WASTE WATER	GRAY WATER	LPG
11555	2645	2235	36' 4"	12' 9"	66	49	98	60

REAR LIVING | 310RE
RV REFRIGERATOR



WEIGHT	CC	HITCH	LENGTH	HEIGHT	FRESH WATER	WASTE WATER	GRAY WATER	LPG
10645	3555	2280	34'	12' 9"	66	49	98	60

REAR ENTERTAINMENT | 310RE
RV REFRIGERATOR



WEIGHT	CC	HITCH	LENGTH	HEIGHT	FRESH WATER	WASTE WATER	GRAY WATER	LPG
11035	2965	2065	36' 1"	12' 9"	66	49	98	60

MID KITCHEN | 320MK | 321MK
RV REFRIGERATOR RES REFRIGERATOR



WEIGHT	CC	HITCH	LENGTH	HEIGHT	FRESH WATER	WASTE WATER	GRAY WATER	LPG
12905	3095	2885	40' 1"	12' 9"	66	49	98	60

REAR LIVING



WEIGHT	CC	HITCH	LENGTH	HEIGHT	FRESH WATER	WASTE WATER	GRAY WATER	LPG
11185	3085	2265	37' 4"	12' 9"	66	49	98	60

REAR LIVING | 330RL | 331RL
RV REFRIGERATOR RES REFRIGERATOR



WEIGHT	CC	HITCH	LENGTH	HEIGHT	FRESH WATER	WASTE WATER	GRAY WATER	LPG
TBD	TBD	TBD	40' 11"	12' 9"	66	49	98	60

BUNK HOUSE | 330RL
RV REFRIGERATOR

FLOORPLAN

MONTANA HIGH CO



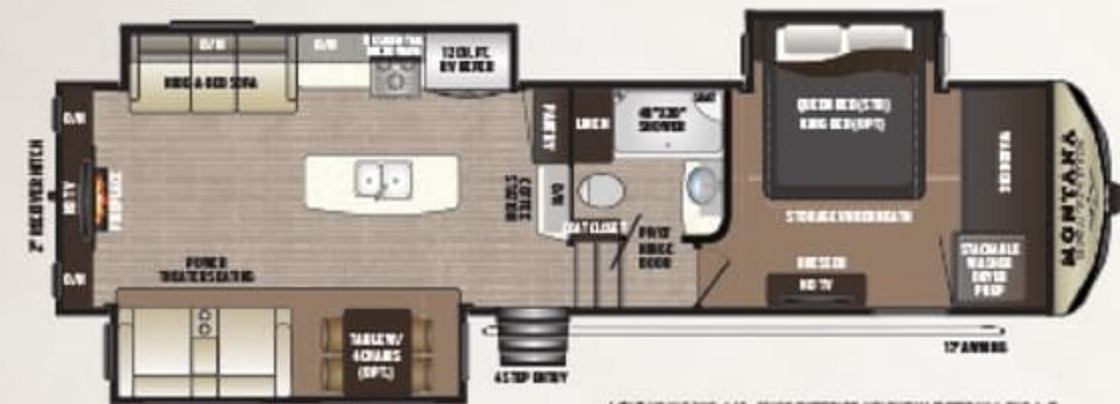
WEIGHT	CC	HITCH	LENGTH*	HEIGHT†	FRESH WATER	WASTEWATER	GRAY WATER	LPG
10745	3555	2395	34' 3"	12' 9"	66	49	98	60

REAR LIVING | **305RL**
RV REFRIGERATOR



WEIGHT	CC	HITCH	LENGTH*	HEIGHT†
11555	2645	2235	36' 4"	12' 9"

REAR LIVING | **310RE**
RV REFRIGERATOR



WEIGHT	CC	HITCH	LENGTH*	HEIGHT†	FRESH WATER	WASTE WATER	GRAY WATER	LPG
10645	3555	2280	34'	12' 9"	66	49	88	60

REAR ENTERTAINMENT | **310RE**
RV REFRIGERATOR



WEIGHT	CC	HITCH	LENGTH*	HEIGHT†	FRESH WATER	WASTE WATER	GRAY WATER	LPG
11035	2965	2065	36' 1"	12' 9"	66	49	98	60

MID KITCHEN | **320MK** | **321MK**
RV REFRIGERATOR | RES REFRIGERATOR



WEIGHT	CC	HITCH	LENGTH*
12905	3095	2885	40' 1"

RE



WEIGHT	CC	HITCH	LENGTH*	HEIGHT†	FRESH WATER	WASTE WATER	GRAY WATER	LPG
11195	3065	2265	37' 4"	12' 9"	66	49	98	60

REAR LIVING | **330RL** | **331RL**
RV REFRIGERATOR | RES REFRIGERATOR



WEIGHT	CC	HITCH	LENGTH*
TBD	TBD	TBD	40' 11"

BUNK HOUSE | **330RL**
RV REFRIGERATOR

TANA COUNTRY



EXCLUDING 2ND A/C - 12" 5" EXTERIOR HEIGHT W/OPTIONAL 2ND A/C
HEIGHT 1 FRESH WATER WASTE WATER GRAY WATER LPO

9' 6" 66 49 98 60
374FL | **375FL**
RV REFRIGERATOR RES REFRIGERATOR



EXCLUDING 2ND A/C - 12" 5" EXTERIOR HEIGHT W/OPTIONAL 2ND A/C
HEIGHT 1 FRESH WATER WASTE WATER GRAY WATER LPO

12' 8" 66 66 98 60
378RD | **379RD**
RV REFRIGERATOR RES REFRIGERATOR



EXCLUDING 2ND A/C - 12" 5" EXTERIOR HEIGHT W/OPTIONAL 2ND A/C
HEIGHT 1 FRESH WATER WASTE WATER GRAY WATER LPO

12' 8" 66 66 98 60
384BR | **385BR**
RV REFRIGERATOR RES REFRIGERATOR



EXCLUDING 2ND A/C - 12" 5" EXTERIOR HEIGHT W/OPTIONAL 2ND A/C
HEIGHT 1 FRESH WATER WASTE WATER GRAY WATER LPO

12' 8" 66 39 78 60
374FL | **375FL**
RV REFRIGERATOR RES REFRIGERATOR



EXCLUDING 2ND A/C - 12" 5" EXTERIOR HEIGHT W/OPTIONAL 2ND A/C
HEIGHT 1 FRESH WATER WASTE WATER GRAY WATER LPO

12' 8" 66 48 98 60
378RD | **379RD**
RV REFRIGERATOR RES REFRIGERATOR



EXCLUDING 2ND A/C - 12" 5" EXTERIOR HEIGHT W/OPTIONAL 2ND A/C
HEIGHT 1 FRESH WATER WASTE WATER GRAY WATER LPO

12' 8" 66 39 78 60
380TH | **381TH**
RV REFRIGERATOR RES REFRIGERATOR



EXCLUDING 2ND A/C - 12" 5" EXTERIOR HEIGHT W/OPTIONAL 2ND A/C
HEIGHT 1 FRESH WATER WASTE WATER GRAY WATER LPO

12' 8" 66 49 98 60
384BR | **385BR**
RV REFRIGERATOR RES REFRIGERATOR

N LINEUP

TANA COUNTRY



† EXCLUDING 2ND A/C - 13' 5" EXTERIOR HEIGHT W/OPTIONAL 2ND A/C

HEIGHT †	FRESH WATER	WASTE WATER	GRAY WATER	LPG
9' 9"	66	49	98	60

344RL | **345RL**
RV REFRIGERATOR | RES REFRIGERATOR



† EXCLUDING 2ND A/C - 13' 5" EXTERIOR HEIGHT W/OPTIONAL 2ND A/C

HEIGHT †	FRESH WATER	WASTE WATER	GRAY WATER	LPG
12' 9"	66	88	98	60

362RD
RV REFRIGERATOR



† EXCLUDING 2ND A/C - 13' 5" EXTERIOR HEIGHT W/OPTIONAL 2ND A/C

HEIGHT †	FRESH WATER	WASTE WATER	GRAY WATER	LPG
12' 9"	66	88	98	60

364BH | **365BH**
RV REFRIGERATOR | RES REFRIGERATOR



† EXCLUDING 2ND A/C - 13' 5" EXTERIOR HEIGHT W/OPTIONAL 2ND A/C

WEIGHT	CC	HITCH	LENGTH*	HEIGHT †	FRESH WATER	WASTE WATER	GRAY WATER	LPG
12435	3065	2595	41' 6"	12' 9"	66	39	78	60

FRONT LIVING | **374FL** | **375FL**
RV REFRIGERATOR | RES REFRIGERATOR



† EXCLUDING 2ND A/C - 13' 5" EXTERIOR HEIGHT W/OPTIONAL 2ND A/C

WEIGHT	CC	HITCH	LENGTH*	HEIGHT †	FRESH WATER	WASTE WATER	GRAY WATER	LPG
12005	3395	2560	40' 0"	12' 9"	66	49	88	60

REAR DEN | **378RD** | **379RD**
RV REFRIGERATOR | RES REFRIGERATOR



† EXCLUDING 2ND A/C - 13' 5" EXTERIOR HEIGHT W/OPTIONAL 2ND A/C

WEIGHT	CC	HITCH	LENGTH*	HEIGHT †	FRESH WATER	WASTE WATER	GRAY WATER	LPG
13390	3610	3265	41' 6"	12' 9"	66	39	78	60

TOY HAULER | **380TH** | **381TH**
RV REFRIGERATOR | RES REFRIGERATOR



† EXCLUDING 2ND A/C - 13' 5" EXTERIOR HEIGHT W/OPTIONAL 2ND A/C

WEIGHT	CC	HITCH	LENGTH*	HEIGHT †	FRESH WATER	WASTE WATER	GRAY WATER	LPG
12810	3690	2660	40' 8"	12' 9"	66	49	88	60

BONUS ROOM | **384BR** | **385BR**
RV REFRIGERATOR | RES REFRIGERATOR

MONTANA HIGH COUNTRY

LUXURY THAT STARTS WITH A SOLID FOUNDATION

MONTANA SETS THE STANDARD IN FIFTH WHEEL CONSTRUCTION.
NO OTHER BRAND OFFERS YOU THIS SOLID FOUNDATION

- 01 EXCLUSIVE COLOR CODED WIRING
- 02 RESIDENTIAL HEAT-DUCT SYSTEM
- 03 SUPERCHARGED A/C COOLING SYSTEM
- 04 6 LAYERS OF CAP PROTECTION
- 05 TRUE-FIT SLIDE TECHNOLOGY
- 06 MOR/RIDE CRE 3000 SUSPENSION
- 07 4 STAGE QUALITY CONTROL PROCESS
- 08 WARRANTY FOR FULL TIME RVING
- 09 ZERO DEGREE TESTED & RATED
- 10 INDUSTRY'S BEST 3 YEAR WARRANTY

01 WIRED FOR PERFORMANCE



THE ONLY TOWABLE MANUFACTURER TO INCORPORATE
COLOR-CODED AND NUMBERED ELECTRICAL WIRING
ON ALL PRODUCTS

- Creates a clean, well organized wiring layout
- Makes it easy to trace electrical circuits and saves troubleshooting time

02 IN-FLOOR RESIDENTIAL HEAT-DUCTS



MONTANA

COMPETITOR

RESIDENTIAL IN-FLOOR HEAT-DUCT SYSTEM JUST LIKE IN YOUR HOME

- A. In-floor, hot air vents spaced for greatest comfort, distributes heat evenly and warms the floor
- B. Competitors heat vent locations are determined by cabinets, causing hot and cold spots. Hot air is supplied through restrictive hoses.

03 SUPERCHARGED A/C COOLING



TUF-LOK THERMOPLASTIC COUPLERS FORM A PERMANENT, CRUSH-RESISTANT SEAL IN YOUR AIR-CONDITIONING DUCT

- A. Securely joins ductwork and air-conditioning units, crush-resistant design won't pull apart due to rough roads, heat and stress
- B. Drastically reduces chilled-air leaks to boost cooling efficiency and comfort
- C. Circular racetrack style ducting improves performance over competitors that use "Figure 8" style that causes additional resistance and turbulence.

04 6 LAYERS OF PROTECTION



MONTANA CAPS ARE FULLY PAINTED AND CLEAR-COATED IN
OUR IN-HOUSE STATE OF THE ART PAINT FACILITY

- Backed by 3 year fade and chalk limited warranty

MONTANA HIGH COUNTRY

LUXURY THAT STARTS WITH A SOLID FOUNDATION

**MONTANA SETS THE STANDARD IN FIFTH WHEEL CONSTRUCTION.
NO OTHER BRAND OFFERS YOU THIS SOLID FOUNDATION**

- 01 EXCLUSIVE COLOR CODED WIRING**
- 02 RESIDENTIAL HEAT-DUCT SYSTEM**
- 03 SUPERCHARGED A/C COOLING SYSTEM**
- 04 6 LAYERS OF CAP PROTECTION**
- 05 TRUE-FIT SLIDE TECHNOLOGY**
- 06 MOR/RYPDE CRE 3000 SUSPENSION**
- 07 4 STAGE QUALITY CONTROL PROCESS**
- 08 WARRANTY FOR FULL TIME RVING**
- 09 ZERO DEGREE TESTED & RATED**
- 10 INDUSTRY'S BEST 3 YEAR WARRANTY**

01 WIRED FOR PERFORMANCE



**THE ONLY TOWABLE MANUFACTURER TO INCORPORATE
COLOR-CODED AND NUMBERED ELECTRICAL WIRING
ON ALL PRODUCTS**

- Creates a clean, well organized wiring layout
- Makes it easy to trace electrical circuits and saves troubleshooting time

02 IN-FLOOR RESIDENTIAL HEAT-DUCTS



MONTANA

COMPETITOR

RESIDENTIAL IN-FLOOR HEAT-DUCT SYSTEM JUST LIKE IN YOUR HOME

- A. In-floor, hot air vents spaced for greatest comfort, distributes heat evenly and warms the floor
- B. Competitors heat vent locations are determined by cabinets, causing hot and cold spots. Hot air is supplied through restrictive hoses.

03 SUPERCHARGED A/C COOLING



TUF-LOK THERMOPLASTIC COUPLERS FORM A PERMANENT, CRUSH-RESISTANT SEAL IN YOUR AIR-CONDITIONING DUCT

- A. Securely joins ductwork and air-conditioning units, crush-resistant design won't pull apart due to rough roads, heat and stress
- B. Drastically reduces chilled-air leaks to boost cooling efficiency and comfort
- C. Circular racetrack style ducting improves performance over competitors that use "figure 8" style that causes additional resistance and turbulence.

04 6 LAYERS OF PROTECTION



**MONTANA CAPS ARE FULLY PAINTED AND CLEAR-COATED IN
OUR IN-HOUSE STATE OF THE ART PAINT FACILITY**

- Backed by 3-year fade and chalk limited warranty

05 TRUE-FIT SLIDE TECHNOLOGY



TRUE-FIT FIVE-POINT SLIDE ROOM CONSTRUCTION BACKED BY THE INDUSTRY'S-BEST 3-YEAR LIMITED STRUCTURAL WARRANTY

- Rain channels direct rain away from the slide openings
- Exterior bulb-seals in a locking track stay secure through extreme heat and cold
- Composite slide-room "glide" bar enables the room to move with no binding
- Reinforced roof, walls and floor
- Beefed-up aluminum header above slide room for greater strength

06 MOR/RYDE CRE 3000 SUSPENSION



MOR/RYDE CRE 3000 SUSPENSION

- The MOR/Ryde™ CRE 3000 Suspension increases dynamic axle travel by up to 3 inches!
- Increased travel means smoother towing, improved towability and better protection from damaging road shock.

07 BEST-IN-INDUSTRY 4 STAGE QUALITY PROCESS



08 FULL-TIME RVING

WARRANTY FOR FULL TIME RVING*

WARRANTY FOR FULL TIME RVING

- There are more full-time Montana campers on the road than any other towable brand in North America. With the most efficient, well-developed warranty, parts and service group, Keystone RV provides unprecedented support and confidence to all Keystone brand customers.
- *REFERENCE KEYSTONE RV COMPANY OWNERS MANUAL FOR LIMITED WARRANTY DETAILS

09 ZERO DEGREE TESTED & RATED



ZERO DEGREE TESTED & RATED

ZERO DEGREE TESTED & RATED

- The industry leader in four season fifth wheel capabilities, Montana has been tested and approved for zero degree usage since 2005.
- Montana's Radiant technology insulation combined with Astro-Foil technology and 12 volt Fresh tank heaters, Montana provides the ultimate in Four Season usage.

10 INDUSTRY'S BEST 3 YEAR WARRANTY



INDUSTRY'S BEST 3 YEAR LIMITED STRUCTURAL WARRANTY

- The limited structural warranty covers your rv for a period of three (3) years from the date of purchase by the original owner. (SEE WARRANTY SHEET FOR COMPLETE DETAILS)



05 TRUE-FIT SLIDE TECHNOLOGY



TRU-FIT FIVE-POINT SLIDE ROOM CONSTRUCTION BACKED BY THE INDUSTRY'S-BEST 3-YEAR LIMITED STRUCTURAL WARRANTY

- Rain channels direct rain away from the slide openings
- Exterior bulb-seals in a locking track stay secure through extreme heat and cold
- Composite slide-room "glide" bar enables the room to move with no binding
- Reinforced roof walls and floor
- Beefed-up aluminum header above slide room for greater strength

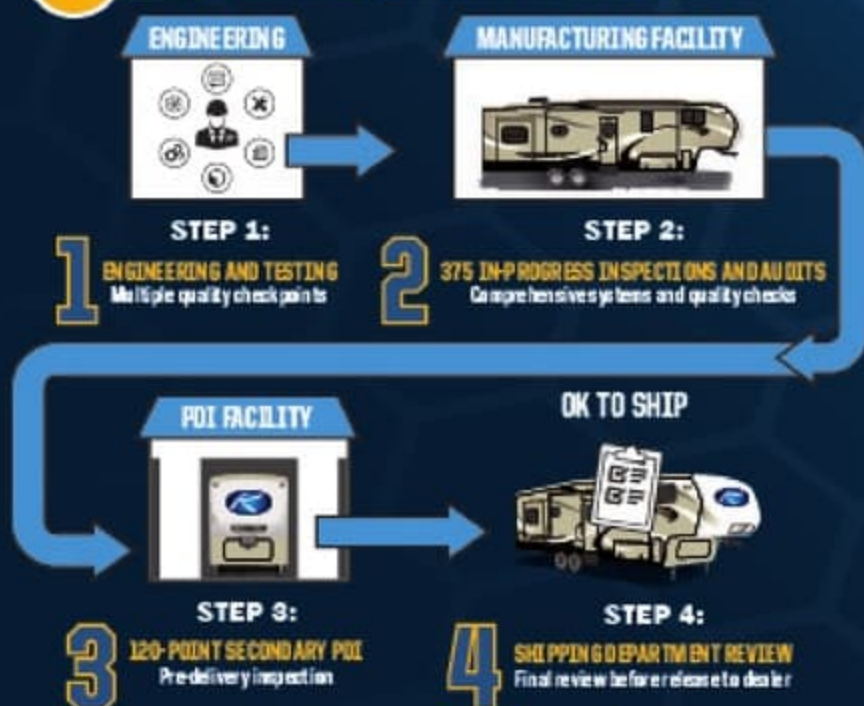
06 MOR/RYPDE CRE 3000 SUSPENSION



MOR/RYPDE CRE 3000 SUSPENSION

- The MOR/Ryde™ CRE 3000 Suspension increases dynamic axle travel by up to 3 inches!
- Increased travel means smoother towing, improved towability and better protection from damaging road shock.

07 BEST-IN-INDUSTRY 4 STAGE QUALITY PROCESS



08 FULL TIME RVING

WARRANTY FOR FULL TIME RVING*

WARRANTY FOR FULL TIME RVING

- There are more full time Montana campers on the road than any other towable brand in North America. With the most efficient, well developed warranty, parts and service group, Keystone RV provides unprecedented support and confidence to all Keystone brand customers.
- *REFERENCE KEYSTONE RV COMPANY OWNERS MANUAL FOR LIMITED WARRANTY DETAILS

09 ZERO DEGREE TESTED & RATED



ZERO DEGREE TESTED & RATED

ZERO DEGREE TESTED & RATED

- The industry leader in four season fifth wheel capabilities, Montana has been tested and approved for zero degree usage since 2005.
- Montana's Radiant technology insulation combined with Astro-Foil technology and 12 volt Fresh tank heaters, Montana provides the ultimate in Four Season usage.

10 INDUSTRY'S BEST 3 YEAR WARRANTY



INDUSTRY'S BEST 3 YEAR LIMITED STRUCTURAL WARRANTY

- The limited structural warranty covers your rv for a period of three (3) years from the date of purchase by the original owner. (SEE WARRANTY SHEET FOR COMPLETE DETAILS)



STANDARDS & OPTIONS

● - STANDARD FEATURE

◆ - RESIDENTIAL LIVING PACKAGE

■ - FOUR SEASON LIVING PACKAGE

LIVING AREA FEATURES

- BRUSHED NICKEL CABINET HARDWARE
- SOLID HARDWOOD SLIDEOUT FASCIA
- 6" 6" TALL MAIN SLIDE-OUTS
- CEILING CROWN MOLDING
- SHAW CARPET WITH R2X PROTECTION
- BEAUFLO FLOORING WITH 7 YEAR COLD CRACKING WARRANTY
- ◆ FLUSH MOUNTED LED INTERIOR LIGHTS
- ◆ ROLLER SHADES
- ◆ TRI-FOLD HIDE-A-BED SOFA
- ◆ THEATER SEATING WITH POWER RECLINERS AND USB CHARGING

KITCHEN FEATURES

- FULL EXTENSION DRAWER GUIDES
- PULL OUT KITCHEN TRASH CAN (SELECT MODELS)
- SUBWAY TILE BACKSPLASH
- ◆ SOLID SURFACE KITCHEN COUNTERTOP
- ◆ SOLID SURFACE FLUSH MOUNT SINK COVERS
- ◆ SINK COVER STORAGE BELOW KITCHEN SINK
- ◆ 30" OVER-THE-RANGE MICROWAVE
- ◆ 22" OVEN WITH BROILER
- ◆ HIGH OUTPUT RANGE WITH AUTOMATIC IGNITER AND FLUSH MOUNT RANGE COVER
- ◆ BOOTH DINETTE WITH EASY-LIFT SEATS
- ◆ MOTION SENSOR LED LIGHT IN PANTRY (SELECT MODELS)
- ◆ POWER VENT FAN WITH RAIN SENSOR AND WALL CONTROLS

HOME ENTERTAINMENT

- CLIMATESMART™ & VIBRATIONSMART™ FURRION STUDIO COLLECTION WITH SINGLE REMOTE CONTROL
- DV3300 AM/FM/CD/DVD PLAYER WITH APP CONTROL & BLUETOOTH
- STUDIO SPEAKERS
- MARINE GRADE EXTERIOR SPEAKERS
- ◆ RG-6 SATELLITE PREP
- ◆ WINEGARD RAYZAR 2-1 HD DIGITAL TV ANTENNA
- ◆ 39" OR 48" 50" HD LED TV WITH CLIMATESMART™ & VIBRATIONSMART™
- ◆ MASTER BEDROOM 32" HD LED TV WITH CLIMATESMART™ & VIBRATIONSMART™

BEDROOM FEATURES

- 60" X 80" QUEEN BED
- SHIP LAP DESIGN HEADBOARD
- READING LIGHTS OVER BED
- MASSIVE STORAGE UNDER BED
- WOOD TV CABINET
- ◆ HIGH DENSITY FOAM MATTRESS
- ◆ BEDSIDE USB CHARGING STATION
- ◆ BEDSIDE NIGHT STANDS
- ◆ PREPPED FOR COMBO OR STACKABLE WASHER/DRYER WITH SEPARATE 20 AMP CIRCUITS FOR EACH APPLIANCE
- ◆ MAGNETIC BEDROOM DOOR HOLDER
- ◆ MOTION SENSOR LED LIGHT IN BEDROOM CLOSET

BATHROOM FEATURES

- SKYLIGHT OVER SHOWER
- 12 GALLON DSI GAS/ELECTRIC WATER HEATER WITH 16.2 GAL PER HR. FAST RECOVERY
- UNDERMOUNT SINK
- SEAMLESS COUNTERTOP
- (3) DRAWERS (1) DOOR VANITY
- BRUSHED NICKEL SHOWER HEAD AND FAUCET
- ◆ SEAMLESS 48" X 30" FIBERGLASS SHOWER
- ◆ PORCELAIN FOOT FLUSH TOILET
- ◆ 50 AMP SERVICE
- ◆ 65 AMP CONVERTER

CONSTRUCTION FEATURES

- UNIFIED WIRING STANDARD: EACH WIRE COLOR-CODED AND NUMBERED
- RESIDENTIAL ROOF RAFTERS
- WELDED ALUMINUM FRAMED WALLS AND FLOORS
- LAMINATED SIDEWALLS WITH DUAL LAYERED LUAN AND METAL BACKING STRIPS TO ANCHOR INTERIOR CABINETS
- SEAMLESS PLY VENEER ON FLOOR DECKING
- POWDER COATED 10" STEEL I-BEAM FRAME (305, 310, 320, 321, 344, 345, 330, 331)
- POWDER COATED 12" STEEL I-BEAM FRAME (362, 364, 365, 374, 375, 378, 379, 380, 381, 384, 385)
- SEAMLESS ROT-CAST HOLDING TANKS

FOUR SEASONS FEATURES

- 35,000 BTU FURNACE
- 15,000 BTU AIR CONDITIONER

- WHISPER QUIET MAIN AIR CONDITIONER SYSTEM
- WIRED AND FRAMED FOR 2ND AIR CONDITIONER
- 16,500 BTU HEAT PUMP ON MAIN AIR CONDITIONER
- ZERO DEGREE TESTED AND RATED
- TWO ATTIC VENTS FOR CROSS VENTILATION
- R-38 EQUIVALENT INSULATED ROOF
- R-21 INSULATED FLOOR
- R-15 INSULATED SLIDE OUT FLOORS
- R-11 INSULATED SIDEWALLS
- INSULATED AND HEATED HOLDING TANKS AND DUMP VALVES
- ENCLOSED AND HEATED LOW POINT DRAINS
- 12V ELECTRIC FRESH WATER TANK HEATER
- RESIDENTIAL CEILING FAN
- 34" LED FIREPLACE THAT CAN HEAT 500 SQ. FT. (5000 BTU) CONTROLLED BY A SINGLE REMOTE

TOWING FEATURES

- MAX TURN FRONT CAP AND RADIUS FRAME WITH HITCH VISION™
- PREPPED FOR REAR VIEW CAMERA
- MOR RYDE CRE 3000 SUSPENSION
- F-RANGE TIRES WITH 5 YEAR MANUFACTURER WARRANTY
- BRONZE BUSHINGS AND 1/2" SHACKLE LINKS
- 16" 8-LUG ALUMINUM WHEELS (110 PSI)
- 6000 LB DEXTER E-Z LUBE AXLES WITH SELF ADJUSTING BRAKES (305, 310, 320, 321, 344, 345, 330, 331)
- 7000 LB DEXTER E-Z LUBE AXLES WITH SELF ADJUSTING BRAKES (362, 364, 365, 374, 375, 378, 379, 380, 381, 384, 385)
- BACK-UP LIGHTS
- UNDER MOUNT SPARE TIRE AND CARRIER

EXTERIOR FEATURES

- AUTOMOTIVE PAINT WITH 2 LAYERS OF CLEAR COAT ON FRONT CAP
- HIGH GLOSS GEL COATED SIDE WALLS AND REAR WALL
- AUTOMOTIVE FRAMELESS SAFETY GLASS WINDOWS
- FOLD AWAY ENTRY HANDLE
- REAR ROOF LADDER
- ◆ SLAM LATCH PASS THRU STORAGE COMPARTMENT DOORS
- ◆ EXTRA LARGE (30" WIDE BY 78" TALL) ENTRY DOOR WITH FRICTION HINGE
- ◆ ENORMOUS DROP FRAME PASS THRU STORAGE COMPARTMENT
- ◆ FOUR STEP ALUMINUM ENTRY STEPS
- ◆ MOTION SENSOR LED LIGHTS IN PASS THRU STORAGE COMPARTMENT
- ◆ MOTION SENSOR LED LIGHTS IN TOY HAULER GARAGE

EASY SET UP FEATURES

- 12V ELECTRIC PATIO AWNING WITH LED LIGHTS
- PATIO SECURITY LIGHT
- HEATED CENTRAL EXTERIOR WATER AND CONVENIENCE CENTER
 - ◆ OUTSIDE SHOWER WITH QUICK CONNECT HOSE
 - ◆ BLACK TANK FLUSH
 - ◆ EASY WINTERIZATION KIT
 - ◆ WATER HEATER BYPASS
 - ◆ POWER TANK FILL
 - ◆ ENCLOSED LOW POINT DRAINS
 - ◆ BATTERY DISCONNECT
 - ◆ CABLE/SATELLITE HOOK-UPS
 - ◆ 12V LIGHT
 - ◆ FURRION SOLAR CHARGING PREP

INTERIOR OPTIONS

- ◆ KING BED (N/A 362, 380, 381)
- ◆ 12 CUBIC FOOT 4 DOOR RV REFRIGERATOR (MANDATORY): 305, 310, 340, 330, 344, 362, 374, 378, 380, 384
- ◆ RESIDENTIAL FRENCH DOOR REFRIGERATOR WITH ICE MAKER AND 1000 WATT INVERTER (MANDATORY): 331, 345, 375, 379, 381, 385
- ◆ POWER VENT FAN WITH RAIN SENSOR IN BATHROOM
- ◆ POWER VENT FAN WITH RAIN SENSOR IN REAR BATHROOM (362)
- ◆ FREE STANDING DINETTE WITH 4 CHAIRS

EXTERIOR OPTIONS

- ◆ LOW PROFILE DUCTED 2ND 13,500 BTU A/C (MANDATORY): 374, 375, 380, 381
- ◆ 4 POINT ELECTRIC AUTOMATIC LEVELING SYSTEM (305, 310, 320, 321, 344, 345, 330, 331)
- ◆ 6 POINT ELECTRIC AUTOMATIC LEVELING SYSTEM (362, 364, 365, 374, 375, 378, 379, 380, 381, 384, 385)
- ◆ DUAL PANE FRAMELESS WINDOWS
- ◆ SLIDEOUT AWNINGS PACKAGE
- ◆ GENERATOR READY (ONAN 5.5 KW SPECIFICATIONS)
- ◆ ONAN MARQUIS GOLD 5.5 KW LP GENERATOR
- ◆ 2" RECEIVER HITCH (MANDATORY)

DISCLAIMER: Product information is as accurate as possible as of the date of publication of this brochure. All features, floor plans, and specifications in this brochure are subject to change without notice.



Keystone RV
Company

KEYSTONERV.COM/MONTANA-HIGH-COUNTRY

STANDARDS & OPTIONS

● - STANDARD FEATURE

◆ - RESIDENTIAL LIVING PACKAGE

■ - FOUR SEASON LIVING PACKAGE

LIVING AREA FEATURES

- BRUSHED NICKEL CABINET HARDWARE
- SOLID HARDWOOD SLIDE OUT FASCIA
- 6" 6" TALL MAIN SLIDE-OUTS
- CEILING CROWN MOLDING
- SHAW CARPET WITH R2X PROTECTION
- BEAUFLO FLOORING WITH 7 YEAR COLD CRACKING WARRANTY
- ◆ FLUSH MOUNTED LED INTERIOR LIGHTS
- ◆ ROLLER SHADES
- ◆ TRI-FOLD HIDE-A-BED SOFA
- ◆ THEATER SEATING WITH POWER RECLINERS AND USB CHARGING

KITCHEN FEATURES

- FULL EXTENSION DRAWER GUIDES
- PULL OUT KITCHEN TRASH CAN (SELECT MODELS)
- SUBWAY TILE BACKSPLASH
- ◆ SOLID SURFACE KITCHEN COUNTERTOP
- ◆ SOLID SURFACE FLUSH MOUNT SINK COVERS
- ◆ SINK COVER STORAGE BELOW KITCHEN SINK
- ◆ 30" OVER-THE-RANGE MICROWAVE
- ◆ 22" OVEN WITH BROILER
- ◆ HIGH OUTPUT RANGE WITH AUTOMATIC IGNITER AND FLUSH MOUNT RANGE COVER
- ◆ BOOTH DINETTE WITH EASY-LIFT SEATS
- ◆ MOTION SENSOR LED LIGHT IN PANTRY (SELECT MODELS)
- POWER VENT FAN WITH RAIN SENSOR AND WALL CONTROLS

HOME ENTERTAINMENT

- CLIMATESMART™ & VIBRATIONSMART™ FURRION STUDIO COLLECTION WITH SINGLE REMOTE CONTROL
- DV3300 AM/FM/CD/DVD PLAYER WITH APP CONTROL & BLUETOOTH
- STUDIO SPEAKERS
- MARINE GRADE EXTERIOR SPEAKERS
- ◆ RG-6 SATELLITE PREP
- ◆ WINEGARD RAYZAR Z-1 HD DIGITAL TV ANTENNA
- ◆ 39" OR 48" / 50" HD LED TV WITH CLIMATESMART™ & VIBRATIONSMART™
- ◆ MASTER BEDROOM 32" HD LED TV WITH CLIMATESMART™ & VIBRATIONSMART™

BEDROOM FEATURES

- 60" X 80" QUEEN BED
- SHIPLAP DESIGN HEADBOARD
- READING LIGHTS OVER BED
- MASSIVE STORAGE UNDER BED
- WOOD TV CABINET
- ◆ HIGH DENSITY FOAM MATTRESS
- ◆ BEDSIDE USB CHARGING STATION
- ◆ BEDSIDE NIGHT STANDS
- ◆ PREPPED FOR COMBO OR STACKABLE WASHER/DRYER WITH SEPARATE 20AMP CIRCUITS FOR EACH APPLIANCE
- ◆ MAGNETIC BEDROOM DOOR HOLDER
- ◆ MOTION SENSOR LED LIGHT IN BEDROOM CLOSET

BATHROOM FEATURES

- SKY LIGHT OVER SHOWER
- 12 GALLON DSI GAS/ELECTRIC WATER HEATER WITH 16.2 GAL PER HR. FAST RECOVERY
- UNDERMOUNT SINK
- SEAMLESS COUNTERTOP
- (3) DRAWERS (1) DOOR VANITY
- BRUSHED NICKEL SHOWER HEAD AND FAUCET
- ◆ SEAMLESS 48" X 30" FIBERGLASS SHOWER
- ◆ PORCELAIN FOOT FLUSH TOILET
- ◆ 50AMP SERVICE
- ◆ 65AMP CONVERTER

CONSTRUCTION FEATURES

- UNIFIED WIRING STANDARD: EACH WIRE COLOR-CODED AND NUMBERED
- RESIDENTIAL ROOF RAFTERS
- WELDED ALUMINUM FRAMED WALLS AND FLOORS
- LAMINATED SIDEWALLS WITH DUAL LAYERED LUAN AND METAL BACKING STRIPS TO ANCHOR INTERIOR CABINETS
- SEAMLESS PLYVENEER® FLOOR DECKING
- POWDER COATED 10" STEEL I-BEAM FRAME (305, 310, 320, 321, 344, 345, 330, 331)
- POWDER COATED 12" STEEL I-BEAM FRAME (362, 364, 365, 374, 375, 378, 379, 380, 381, 384, 385)
- SEAMLESS ROTO-CAST HOLDING TANKS

FOUR SEASONS FEATURES

- 35,000 BTU FURNACE
- 15,000 BTU AIR CONDITIONER

- WHISPER QUIET MAIN AIR CONDITIONER SYSTEM
- WIRED AND FRAMED FOR 2ND AIR CONDITIONER
- 16,500 BTU HEAT PUMP ON MAIN AIR CONDITIONER
- ZERO DEGREE TESTED AND RATED
- TWO ATTIC VENTS FOR CROSS VENTILATION
- R-38 EQUIVALENT INSULATED ROOF
- R-21 INSULATED FLOOR
- R-15 INSULATED SLIDE OUT FLOORS
- R-11 INSULATED SIDEWALLS
- INSULATED AND HEATED HOLDING TANKS AND DUMP VALVES
- ENCLOSED AND HEATED LOW POINT DRAINS
- 12V ELECTRIC FRESH WATER TANK HEATER
- RESIDENTIAL CEILING FAN
- 34" LED FIREPLACE THAT CAN HEAT 500 SQ. FT. (5000 BTU) CONTROLLED BY A SINGLE REMOTE

TOWING FEATURES

- MAX TURN FRONT CAP AND RADIUS FRAME WITH HITCH VISION™
- PREPPED FOR REAR VIEW CAMERA
- MOR RYDE CRE 3000 SUSPENSION
- F-RANGE TIRES WITH 5 YEAR MANUFACTURER WARRANTY
- BRONZE BUSHINGS AND 1/2" SHACKLE LINKS
- 16" 8-LUG ALUMINUM WHEELS (110 PSI)
- 6000 LB DEXTER E-Z LUBE AXLES WITH SELF ADJUSTING BRAKES (305, 310, 320, 321, 344, 345, 330, 331)
- 7000 LB DEXTER E-Z LUBE AXLES WITH SELF ADJUSTING BRAKES (362, 364, 365, 374, 375, 378, 379, 380, 381, 384, 385)
- BACK-UP LIGHTS
- UNDER MOUNT SPARE TIRE AND CARRIER

EXTERIOR FEATURES

- AUTOMOTIVE PAINT WITH 2 LAYERS OF CLEAR COAT ON FRONT CAP
- HIGH GLOSS GEL COATED SIDEWALLS AND REAR WALL
- AUTOMOTIVE FRAMELESS SAFETY GLASS WINDOWS
- FOLD AWAY ENTRY HANDLE
- REAR ROOF LADDER
- SLAM LATCH PASS THRU STORAGE COMPARTMENT DOORS
- ◆ EXTRA LARGE (30" WIDE BY 78" TALL) ENTRY DOOR WITH FRICTION HINGE
- ◆ ENORMOUS DROP FRAME PASS THRU STORAGE COMPARTMENT
- ◆ FOUR STEP ALUMINUM ENTRY STEPS
- ◆ MOTION SENSOR LED LIGHTS IN PASS THRU STORAGE COMPARTMENT
- ◆ MOTION SENSOR LED LIGHTS IN TOY HAULER GARAGE

EASY SET UP FEATURES

- 12V ELECTRIC PATIO AWNING WITH LED LIGHTS
- PATIO SECURITY LIGHT
- HEATED CENTRAL EXTERIOR WATER AND CONVENIENCE CENTER
 - ◆ OUTSIDE SHOWER WITH QUICK CONNECT HOSE
 - ◆ BLACK TANK FLUSH
 - ◆ EASY WINTERIZATION KIT
 - ◆ WATER HEATER BYPASS
 - ◆ POWER TANK FILL
 - ◆ ENCLOSED LOW POINT DRAINS
 - ◆ BATTERY DISCONNECT
 - ◆ CABLE/SATELLITE HOOK-UPS
 - ◆ 12V LIGHT
 - ◆ FURRION SOLAR CHARGING PREP

INTERIOR OPTIONS

- KING BED (N/A 362, 380, 381)
- 12 CUBIC FOOT 4 DOOR RV REFRIGERATOR (MANDATORY): 305, 310, 340, 330, 344, 362, 374, 378, 380, 384
- RESIDENTIAL FRENCH DOOR REFRIGERATOR WITH ICE MAKER AND 1000 WATT INVERTER (MANDATORY): 331, 345, 375, 379, 381, 385
- POWER VENT FAN WITH RAIN SENSOR IN BATHROOM
- POWER VENT FAN WITH RAIN SENSOR IN REAR BATHROOM (362)
- FREE STANDING DINETTE WITH 4 CHAIRS

EXTERIOR OPTIONS

- LOW PROFILE DUCTED 2ND 13,500 BTU A/C (MANDATORY): 374, 375, 380, 381
- 4 POINT ELECTRIC AUTOMATIC LEVELING SYSTEM (305, 310, 320, 321, 344, 345, 330, 331)
- 6 POINT ELECTRIC AUTOMATIC LEVELING SYSTEM (362, 364, 365, 374, 375, 378, 379, 380, 381, 384, 385)
- DUAL PANE FRAMELESS WINDOWS
- SLIDE OUT AWNINGS PACKAGE
- GENERATOR READY (ON AN 5.5 KW SPECIFICATIONS)
- ONAN MARQUIS GOLD 5.5 KW LP GENERATOR
- 2" RECEIVER HITCH (MANDATORY)

DISCLAIMER: Product information is as accurate as possible as of the date of publication of this brochure. All features, floor plans, and specifications in this brochure are subject to change without notice.



Keystone RV
Company

KEYSTONERV.COM/MONTANA-HIGH-COUNTRY

MONTANA HIGH COUNTRY

TOP FEATURES



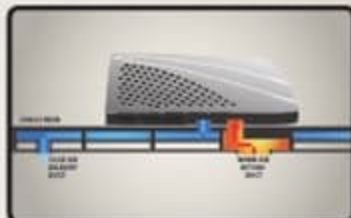
UPGRADED ROLLER SHADES FOR QUIET OPERATION AND EASY CLEANING



18 CU. FT. RESIDENTIAL REFRIGERATOR W/ ICE MAKER (SELECT FLOORPLANS)



OPTIONAL KING SIZE BED (N/A 362/380/381)



15K QUIET COOL AIR CONDITIONING WITH HEAT PUMP STANDARD



SEAMLESS 48"x30" FIBERGLASS SHOWER W/SEAT, NOT 2PC. PLASTIC



78" TALL MAIN SLIDEOUTS W/ PANORAMIC WINDOWS BRINGING OUTSIDE, INSIDE



30" RESIDENTIAL MICROWAVE THAT ACCOMMODATES LARGE COOKING DISHES



AUTO LEVELING SYSTEM FOR EASE AND STABILITY



DROP FRAME CONSTRUCTION WITH MASSIVE STORAGE



FURRION BACKUP CAMERA PREP



FRAMELESS WINDOWS PROVIDES PROTECTION FROM UV RAYS ON SEALS



WINEGARD RAYZOR Z-1 TV ANTENNA NEVER NEEDING CRANKED UP



F-RANGE TIRES WITH 5 YEAR WARRANTY & TREAD CARE PLUS



8 LUG ALUMINUM RIMS RATED AT 110 PSI (APPROVED FOR G RANGE)



BAL H-D-A SPARE TIRE CARRIER FOR EASY ACCESS



2" RECEIVER HITCH WITH 300 LB CAPACITY FOR YOUR ACCESSORIES



BACKUP LIGHTS PROVIDING ADDITIONAL SAFETY AND SECURITY



ALL-IN-ONE FURRION REMOTE CONTROLS TV, RADIO AND FIREPLACE



RESIDENTIAL CEILING FAN PROVIDES NATURAL AIR MOVEMENT



POWER RECLINING THEATER SEATING WITH CONVENIENT USB CHARGING PORT



MORE BATHROOM STORAGE WITH THE W/ 3 DRAWER RESIDENTIAL VANITY



OUR WASHER DRYER CABINET SIZE ALLOWS YOU TO CHOOSE STACKABLE OR COMBO



SUBURBAN 12 GALLON WATER HEATER WITH PORCELAIN LINED TANK



RECESSED GLASS COVER PROVIDES MORE COUNTERTOP SPACE

MONTANA HIGH COUNTRY

TOP FEATURES



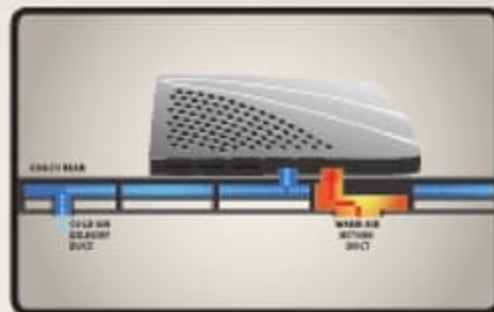
UPGRADED ROLLER SHADES FOR QUIET OPERATION AND EASY CLEANING



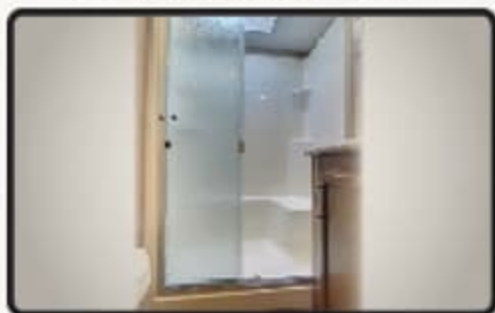
18 CU. FT. RESIDENTIAL REFRIGERATOR W/ ICE MAKER (SELECT FLOORPLANS)



OPTIONAL KING SIZE BED (N/A 362/380/381)



15K QUIET COOL AIR CONDITIONING WITH HEAT PUMP STANDARD



SEAMLESS 48"x30" FIBERGLASS SHOWER W/SEAT, NOT 2PC. PLASTIC



78" TALL MAIN SLIDEOUTS W/ PANORAMIC WINDOWS BRINGING OUTSIDE, INSIDE



30" RESIDENTIAL MICROWAVE THAT ACCOMMODATES LARGE COOKING DISHES



AUTO LEVELING SYSTEM FOR EASE AND STABILITY



DROP FRAME CONSTRUCTION WITH MASSIVE STORAGE



FURRION BACKUP CAMERA PREP



FRAMELESS WINDOWS PROVIDES PROTECTION FROM UV RAYS ON SEALS



WINEGARD RAYZOR Z-1 TV ANTENNA NEVER NEEDING CRANKED UP



F-RANGE TIRES WITH 5 YEAR WARRANTY & TREAD CARE PLUS



8 LUG ALUMINUM RIMS RATED AT 110 PSI (APPROVED FOR G RANGE)



BALDWIN SPARE TIRE CARRIER FOR EASY ACCESS



2" RECEIVER HITCH WITH 300 LB CAPACITY FOR YOUR ACCESSORIES



BACKUP LIGHTS PROVIDING ADDITIONAL SAFETY AND SECURITY



ALL-IN-ONE FURRIION REMOTE CONTROLS TV, RADIO AND FIREPLACE



RESIDENTIAL CEILING FAN PROVIDES NATURAL AIR MOVEMENT



POWER RECLINING THEATER SEATING WITH CONVENIENT USB CHARGING PORT



MORE BATHROOM STORAGE WITH THE W/ 3 DRAWER RESIDENTIAL VANITY



OUR WASHER DRYER CABINET SIZE ALLOWS YOU TO CHOOSE STACKABLE OR COMBO



SUBURBAN 12 GALLON WATER HEATER WITH PORCELAIN LINED TANK



RECESSED GLASS COVER PROVIDES MORE COUNTERTOP SPACE

MONTANA HIGH COUNTRY



PURCHASING YOUR RV LOCALLY

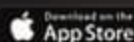
It's up to you where you purchase your new Montana HC, but may we suggest your local dealer? Not only does it help your local economy and provide jobs, but it will also give you an opportunity to develop a service relationship with someone that will come to know you and your coach. Congratulations on finding the best built, best equipped and best value in the industry. Happy travels!

EXPERIENCE VIRTUAL TOURS

LOOK FOR THIS ICON **360° View**



Also Works with VR App



MONTANA
HIGH COUNTRY



Go RVing.



DISCLAIMER: Product information is as accurate as possible as of the date of publication of this brochure. All features, floor plans, and specifications in this brochure are subject to change without notice. Please also consult Keystone's web site at www.keystonerv.com for more current product information and specifications. Tow Vehicle Disclaimer: CAUTION: Owners of Keystone recreational vehicles are solely responsible for the selection and proper use of tow vehicles. All customers should consult with a motor vehicle manufacturer or their dealer concerning the purchase and use of suitable tow vehicles for Keystone products. Keystone disclaims any liability or damages suffered as a result of the selection, operation, use or misuse of a tow vehicle. KEYSTONE'S LIMITED WARRANTY DOES NOT COVER DAMAGE TO THE RECREATIONAL VEHICLE OR THE TOW VEHICLE AS A RESULT OF THE SELECTION, OPERATION, USE OR MISUSE OF THE TOW VEHICLE. REFERENCE KEYSTONE RV COMPANY OWNERS MANUAL FOR LIMITED WARRANTY DETAILS. *Length is defined as the distance from the centerline of hitch pin/coupler to rear bumper of trailer.

YOUR LOCAL DEALER IS:

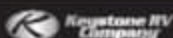


JANUARY 2018

BUILT BY EXPERIENCE

OVER 100,000 MONTANA FIFTH WHEELS ON THE ROAD TODAY

KEYSTONERV.COM/MONTANA-HIGH-COUNTRY



MONTANA HIGH COUNTRY



PURCHASING YOUR RV LOCALLY

It's up to you where you purchase your new Montana HC, but may we suggest your local dealer? Not only does it help your local economy and provide jobs, but it will also give you an opportunity to develop a service relationship with someone that will come to know you and your coach. Congratulations on finding the best built, best equipped and best value in the industry. Happy travels!

EXPERIENCE VIRTUAL TOURS

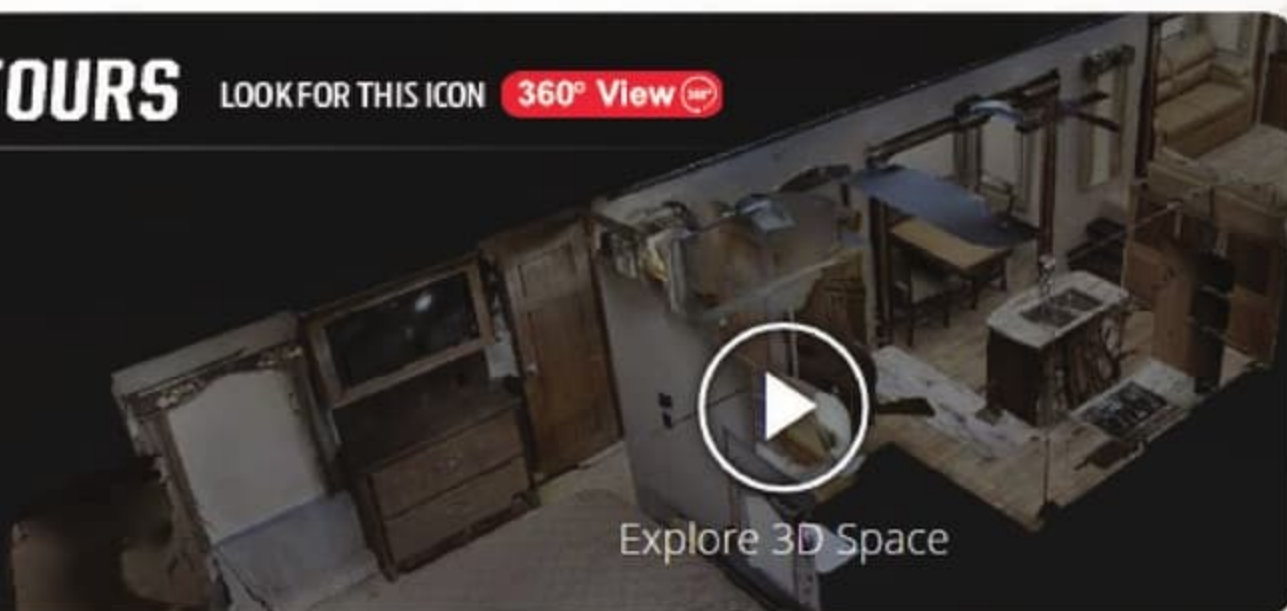
LOOK FOR THIS ICON **360° View**



Also Works with VR App

Download on the
App Store

Get it on
Google Play



MONTANA
HIGH COUNTRY



Go RVing.

Member
RVIA
RECREATION VEHICLE
INDUSTRY ASSOCIATION



DISCLAIMER: Product information is as accurate as possible as of the date of publication of this brochure. All features, floor plans, and specifications in this brochure are subject to change without notice. Please also consult Keystone's web site at www.keystonerv.com for more current product information and specifications. Tow Vehicle Disclaimer. CAUTION: Owners of Keystone recreational vehicles are solely responsible for the selection and proper use of tow vehicles. All customers should consult with a motor vehicle manufacturer or their dealer concerning the purchase and use of suitable tow vehicles for Keystone products. Keystone disclaims any liability or damages suffered as a result of the selection, operation, use or misuse of a tow vehicle. KEYSTONE'S LIMITED WARRANTY DOES NOT COVER DAMAGE TO THE RECREATIONAL VEHICLE OR THE TOW VEHICLE AS A RESULT OF THE SELECTION, OPERATION, USE OR MISUSE OF THE TOW VEHICLE. REFERENCE KEYSTONE RV COMPANY OWNERS MANUAL FOR LIMITED WARRANTY DETAILS. *Length is defined as the distance from the centerline of hitch pin/coupler to rear bumper of trailer.

YOUR LOCAL DEALER IS:



JANUARY 2018

BUILT BY EXPERIENCE

OVER 100,000 MONTANA FIFTH WHEELS ON THE ROAD TODAY

KEYSTONERV.COM/MONTANA-HIGH-COUNTRY ||