

RETREAT

// DESTINATION TRAILERS //



**Keystone RV
Company**

*The
Great*
INDOORS

KEYSTONERV.COM/RETREAT



RETREAT

// DESTINATION TRAILERS //



**Keystone RV
Company**

*The
Great*
INDOORS

KEYSTONERV.COM/RETREAT





WIRED FOR PERFORMANCE

THE ONLY TOWABLE MANUFACTURER TO INCORPORATE COLOR-CODED AND NUMBERED ELECTRICAL WIRING ON ALL PRODUCTS

- Create a clean, well organized wiring layout
- Makes it easy to trace electrical circuits and saves troubleshooting time



TUF-LOK THERMOPLASTIC COUPLERS FORM A PERMANENT, CRUSH-RESISTANT SEAL IN YOUR AIR-CONDITIONING DUCT

- Securely joins ductwork and air-conditioning units
- Crush-resistant design won't pull apart due to rough roads, heat and stress
- Drastically reduces chilled-air leaks to boost cooling efficiency and comfort



IN-FLOOR RESIDENTIAL HEAT-DUCTS

RESIDENTIAL IN-FLOOR HEAT-DUCT SYSTEM JUST LIKE IN YOUR HOME

- In-floor, hot air vents spaced for greatest comfort
- Distributes heat evenly and warms the floor

BUILT FOR THE LONG HAUL



INNOVATION THAT STARTS WITH A SOLID FOUNDATION

WWW.KEYSTONERV.COM



110



110 RVQA QUALITY CIRCLE AWARDS

- Keystone Brands have earned 110 DSI Quality Circle Awards since 2007



MOST CAPS ARE FULLY PAINTED AND CLEAR-COATED IN OUR IN-HOUSE STATE OF THE ART PAINT FACILITY

- Backed by 3-year fade and chalk limited warranty



TRU-FIT TECHNOLOGY

TRU-FIT FIVE-POINT SLIDE ROOM CONSTRUCTION BACKED BY THE INDUSTRY'S-BEST 3-YEAR LIMITED STRUCTURAL WARRANTY

- Rain channels direct rain away from the slide openings
- Exterior bulb-seals in a locking track stay secure through extreme heat and cold
- Composite slide-room "glide" bar enables the room to move with no binding
- Reinforced roof, walls and floor
- Beefed-up aluminum header above slide room for greater strength





WIRED FOR PERFORMANCE

THE ONLY TOWABLE MANUFACTURER TO INCORPORATE COLOR-CODED AND NUMBERED ELECTRICAL WIRING ON ALL PRODUCTS

- Create a clean, well organized wiring layout
- Makes it easy to trace electrical circuits and saves troubleshooting time



TUF-LOK THERMOELASTIC COUPLERS FORM A PERMANENT, CRUSH-RESISTANT SEAL IN YOUR AIR-CONDITIONING DUCT

- Securely joins ductwork and air-conditioning units
- Crush-resistant design won't pull apart due to rough roads, heat and stress
- Drastically reduces chilled-air leaks to boost cooling efficiency and comfort



IN-FLOOR RESIDENTIAL HEAT-DUCTS

RESIDENTIAL IN-FLOOR HEAT-DUCT SYSTEM JUST LIKE IN YOUR HOME

- In-floor, hot air vents spaced for greatest comfort
- Distributes heat evenly and warms the floor

BUILT FOR THE LONG HAUL



INNOVATION THAT STARTS WITH A SOLID FOUNDATION

WWW.KEYSTONERV.COM Keystone RV Company

110



110 RVDA QUALITY CIRCLE AWARDS

• Keystone Brands have earned 110 DSI Quality Circle Awards since 2007



7 LAYERS OF PROTECTION

MOST CAPS ARE FULLY PAINTED AND CLEAR-COATED IN OUR IN-HOUSE STATE OF THE ART PAINT FACILITY

- Backed by 3-year fade and chalk limited warranty



TRU-FIT TECHNOLOGY

TRU-FIT FIVE-POINT SLIDE ROOM CONSTRUCTION BACKED BY THE INDUSTRY'S-BEST 3-YEAR LIMITED STRUCTURAL WARRANTY

- Rain channels direct rain away from the slide openings
- Exterior bulb-seals in a locking track stay secure through extreme heat and cold
- Composite slide-room "glide" bar enables the room to move with no binding
- Reinforced roof, walls and floor
- Beefed-up aluminum header above slide room for greater strength





ALL NEW FEATURES

- » **New 39/391MBNK Floorplan**
- » **New 39/391RDEN Floorplan**
- » **Standard Flush Floor Main Slide**
- » **New Sliding Dinette Table With Extension**
- » **Flip Up Storage Under Dining Chairs**
- » **LED Lighted Awning**
- » **Ceiling Fan In Living Room**
- » **Upgraded Cabinetry**
- » **New Upgraded Cabinet Hardware**
- » **New Interior Look**
- » **Standard Stainless Steel Sink**
- » **LED Interior lights Throughout**
- » **One Piece Countertops**
- » **Huge Panoramic Windows**
- » **New Radius Shower**
- » **New Feature Wall With Wine Rack MKTS, RLTS, LOFT**
- » **Standard Heated/Enclosed Underbelly**





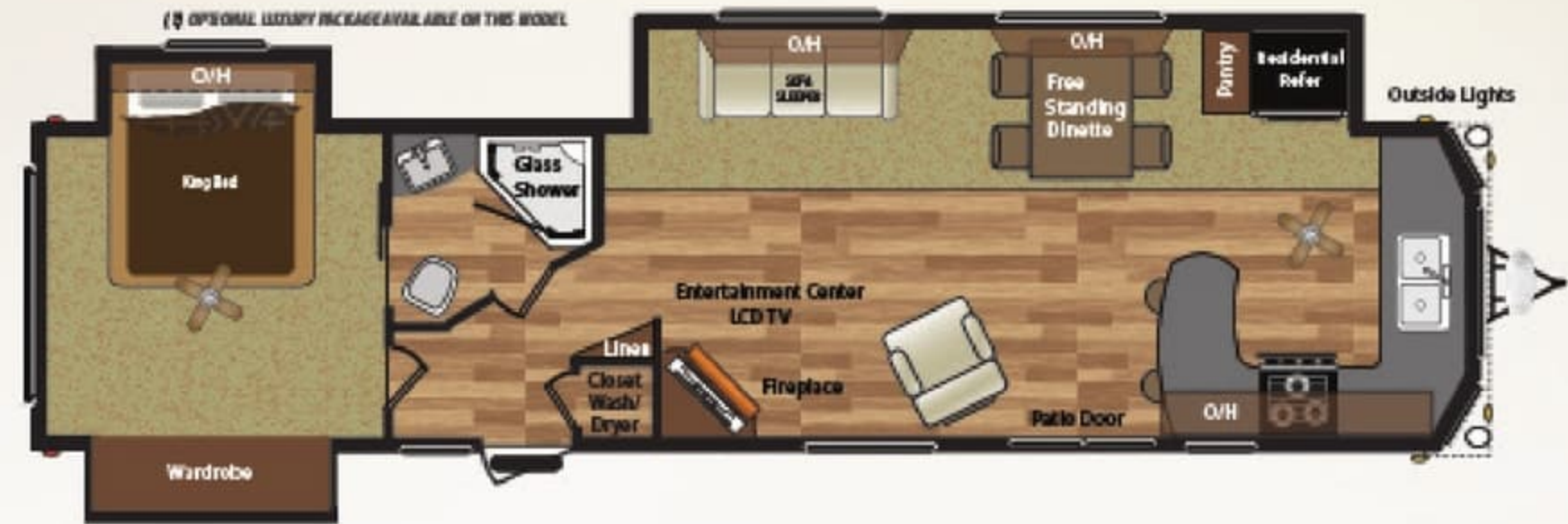
ALL NEW FEATURES

- » **New 39/391MBNK Floorplan**
- » **New 39/391RDEN Floorplan**
- » **Standard Flush Floor Main Slide**
- » **New Sliding Dinette Table With Extension**
- » **Flip Up Storage Under Dining Chairs**
- » **LED Lighted Awning**
- » **Ceiling Fan In Living Room**
- » **Upgraded Cabinetry**
- » **New Upgraded Cabinet Hardware**
- » **New Interior Look**
- » **Standard Stainless Steel Sink**
- » **LED Interior lights Throughout**
- » **One Piece Countertops**
- » **Huge Panoramic Windows**
- » **New Radius Shower**
- » **New Feature Wall With Wine Rack MKTS, RLTS, LOFT**
- » **Standard Heated/Enclosed Underbelly**

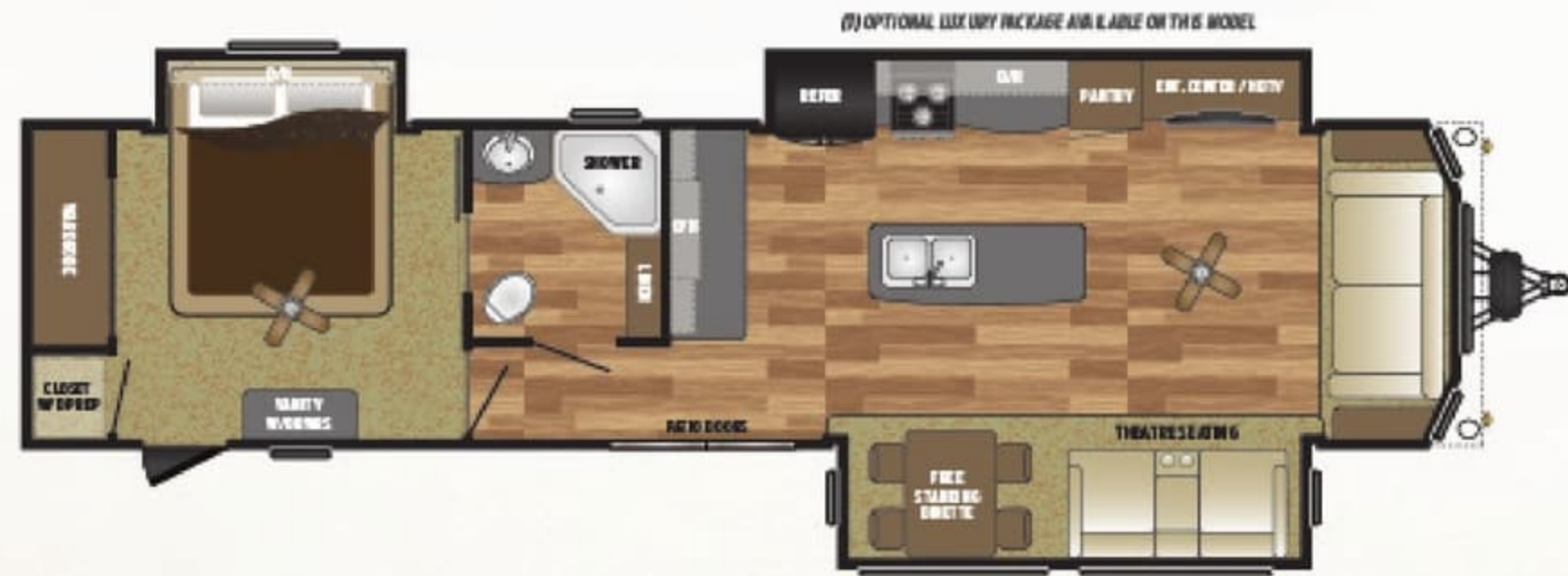




WEIGHT LENGTH
10505 40' 11" **39/391FDEN**
REDESIGNED



WEIGHT LENGTH
10920 40' 2" **39/391FKSS**
REDESIGNED



WEIGHT LENGTH
11463 40' 8" **39/391MKTS**



WEIGHT LENGTH
12015 40' 11" **39/391RDEN**
NEW

MODEL	SHIPPING WEIGHT	CARRYING CAPACITY	HITCH WEIGHT	FRESH WATER	WASTE WATER	GREY WATER	LPG	EXT LENGTH*	EXT HEIGHT
39(1)FDEN	10505	2695	1255	53	39	78	60	40' 11"	12' 7"
39(1)FKSS	10920	2430	1360	53	39	78	60	40' 2"	12' 7"
39(1)LOFT	11985	2015	1725	53	39	71	60	40' 8"	13' 5"
39(1)MBNK	11995	1305	1340	53	39	78	60	39' 10"	12' 7"
39(1)MKTS	11463	2462	1925	53	39	71	60	40' 8"	12' 7"
39(1)RDEN	12015	1455	1475	53	39	39	60	40' 11"	12' 7"
39(1)RLTS	11405	2330	1610	53	39	71	60	40' 5"	12' 7"

DISCLAIMER: Product information is as accurate as possible as of the date of publication of this brochure. All features, floor plans, and specifications in this brochure are subject to change without notice. Please also consult Keystone's web site at www.keystonerv.com for more current product information and specifications. Tow Vehicle Disclaimer. CAUTION: Owners of Keystone recreational vehicles are solely responsible for the selection and proper use of tow vehicles. All customers should consult with a motor vehicle manufacturer or their dealer concerning the purchase and use of suitable tow vehicles for Keystone products. Keystone disclaims any liability or damages suffered as a result of the selection, operation, use or misuse of a tow vehicle. KEYSTONE'S LIMITED WARRANTY DOES NOT COVER DAMAGE TO THE RECREATIONAL VEHICLE OR THE TOW VEHICLE AS A RESULT OF THE SELECTION, OPERATION, USE OR MISUSE OF THE TOW VEHICLE. *Length is defined as the distance from the centerline of hitch pin/coupler to rear bumper of trailer.



WEIGHT 11985 LENGTH 40' 8" **39/391LOFT**



WEIGHT 11995 LENGTH 39' 10" **39/391MBNK**
NEW



WEIGHT 11405 LENGTH 40' 5" **39/391RLTS**

EXPERIENCE VIRTUAL TOURS LOOK FOR THIS ICON **360° View**

Also Works with VR App

Download on the App Store | GET IT ON Google Play

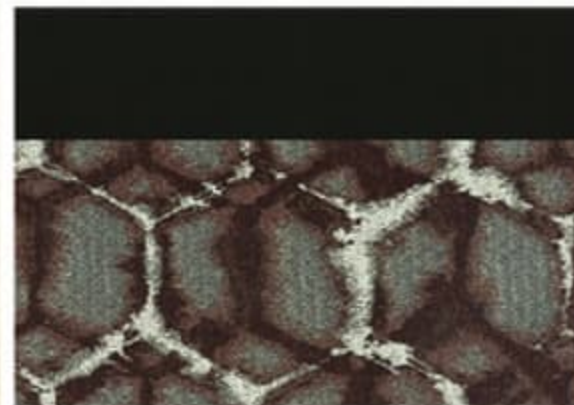
Explore 3D Space

STAY IN TOUCH



Retreat is always just a touch away. You'll find 360 virtual tours, location of your nearest dealer, photos, videos and all of the latest information about Retreat. Everything you need can be accessed anytime, day or night, from home or on the road. You can also find us on the Keystone RV Facebook.

DECOR OPTIONS



LODGE DECOR



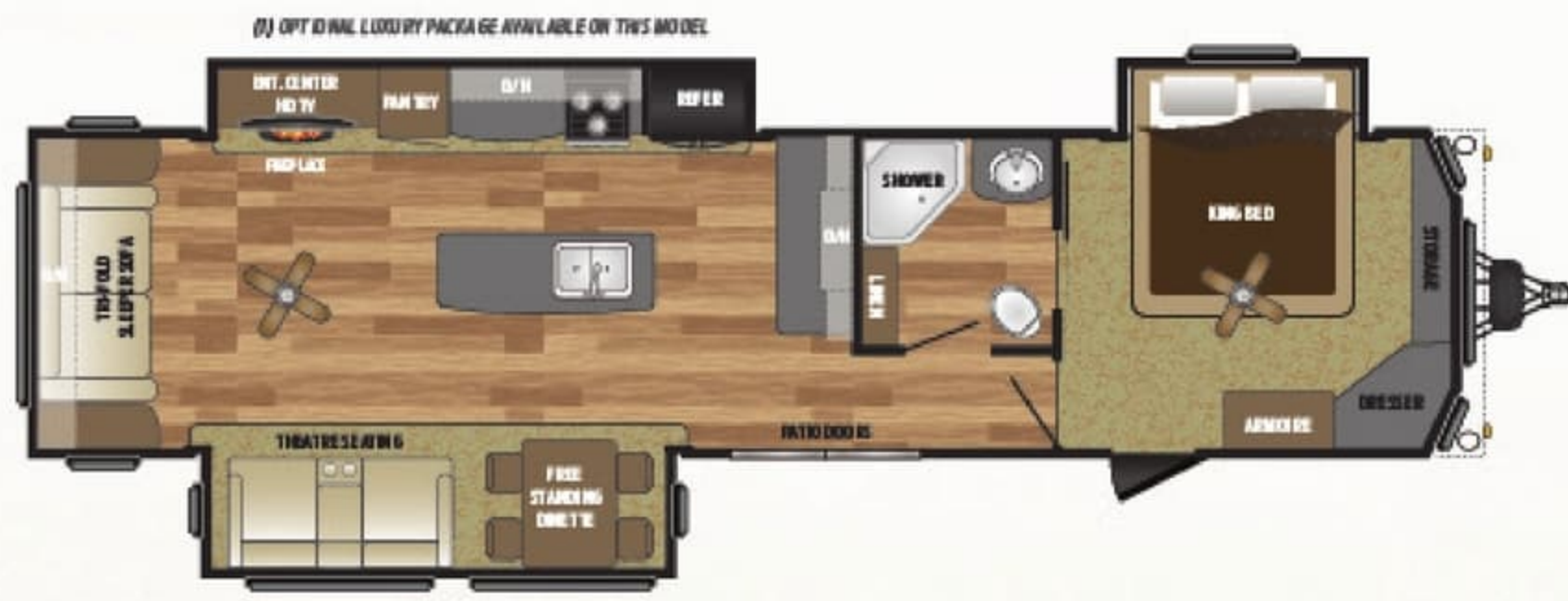
TIMBER DECOR



WEIGHT 11985 LENGTH 40' 8" **39/391LOFT**



WEIGHT 11995 LENGTH 39' 10" **39/391MBNK**
NEW



WEIGHT 11405 LENGTH 40' 5" **39/391RLTS**

EXPERIENCE VIRTUAL TOURS LOOK FOR THIS ICON **360° View**

Also Works with VR App

Download on the App Store | Get it on Google Play

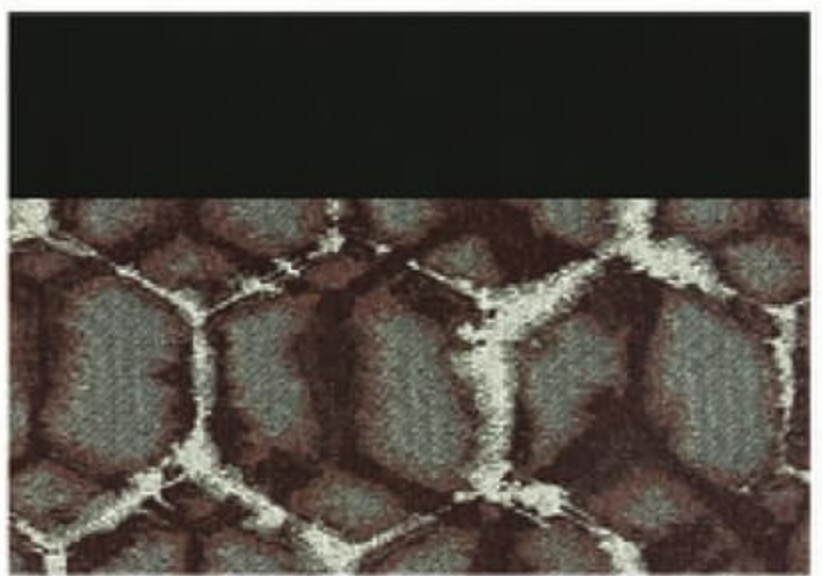
Explore 3D Space

STAY IN TOUCH



Retreat is always just a touch away. You'll find 360 virtual tours, location of your nearest dealer, photos, videos and all of the latest information about Retreat. Everything you need can be accessed anytime, day or night, from home or on the road. You can also find us on the Keystone RV Facebook.

DECOR OPTIONS



LODGE DECOR



TIMBER DECOR

RETREAT

by Keystone

LUXURY PACKAGE

AVAILABLE ON ALL MODELS

LUXURY COMES STANDARD \ COMFORT AND LUXURY FOR THE WHOLE FAMILY



SOLID SURFACE COUNTERTOPS WITH STAINLESS STEEL UNDER MOUNT SINK AND CHEF FAUCET



CHAMPAGNE LAMINATED SIDEWALL WITH UPGRADED GRAPHICS PACKAGE



HEATED ENCLOSED UNDERBELLY



STAINLESS STEEL APPLIANCE PACKAGE



OPTIONAL DUAL PANE GLASS WINDOWS



UPGRADED INTERIOR LIGHTING PACKAGE

RETREAT

by Keystone

LUXURY PACKAGE

AVAILABLE ON ALL MODELS

LUXURY COMES STANDARD \ COMFORT AND LUXURY FOR THE WHOLE FAMILY



SOLID SURFACE COUNTERTOPS WITH STAINLESS STEEL UNDER MOUNT SINK AND CHEF FAUCET



CHAMPAGNE LAMINATED SIDEWALL WITH UPGRADED GRAPHICS PACKAGE



HEATED ENCLOSED UNDERBELLY



STAINLESS STEEL APPLIANCE PACKAGE



OPTIONAL DUAL PANE GLASS WINDOWS



UPGRADED INTERIOR LIGHTING PACKAGE

LIVING ROOM HIGHLIGHTS

- 8' Ceiling height
- Solid wood slide room facia
- 39" Main slide room depth
- Decorative plantation blinds in living area
- 72" sleeper sofa
- Fireplace
- 40" HD LED TV (N/A 39MKTS, 39FDEN, 39LOFT, 39RDEN)
- 50" HD LED TV (39MKTS, 39LOFT, 39RLTS, 39RDEN)
- Theatre Seating (39MKTS, 39FDEN, 39LOFT, 39RDEN)
- DVD/AM/FM/CD/MP3 Stereo system with Bluetooth
- 12 Volt Charging station
- Recliner (39FDEN, 39FKSS)
- Free standing dinette with four chairs w/ flip storage (N/A 39RDEN)
- Residential recessed ceiling lighting
- Ceiling fan with light (39FDEN & 39FKSS only)

KITCHEN HIGHLIGHTS

- Extra deep double bowl kitchen stainless steel sink
- High rise faucet with pull out sprayer
- Residential "eat in" bar (FKSS, FDEN, RDEN)
- Bar stools (FKSS, FDEN, RDEN)
- Waste basket storage
- Solid wood shaker style residential cabinets with crown molding
- Pre-drilled and screwed hardwood cabinet framing
- Residential ball bearing drawer guides
- Microwave with carousel
- Three burner range with oven
- 16 Cu. Ft. residential refrigerator
- Single door pantry
- Residential water purification system
- Upgrade central vacuum system

BATH

- Porcelain Toilet with foot flush
- Radius glass shower with surround
- Fantastic fan w/convenient wall mount control (N/A 39LOFT)
- Large medicine cabinet
- Louvered door on large closet
- Washer and dryer prep (N/A 39FDEN, 39RDEN, 39MBNK, 39RLTS)
- Dressing mirror

BEDROOM

- 7' Tall bed slide
- Oversized bed slide w/overhead cabinets, accented w decorative cabinet doors & functional reading lights
- Mega storage under master beds

- Gas strut assisted bed lift
- Etched glass cabinet doors in the bed slide
- Two door wardrobe
- Fully extended deep dresser drawers
- Pleated shades
- Large panoramic window
- Residential ceiling fan
- Recessed decorative lighting
- Prep for 2nd TV

EXTERIOR

- Fiberglass front
- Residential exterior soffit lights
- Dual 30 Lbs LP bottles with automatic change over and cover
- Large swing away grab handle (Main Door)
- 2 Exterior speakers
- Residential patio door with screen door
- Exterior shower
- 50 Amp detachable power cord
- Satellite / Cable TV hook-up
- 110 volt exterior outlets
- E-Coated Wheels
- Heated & Enclosed Underbelly

MECHANICS

- 16 gallon gas/electric DSI water heater
- 40,000 BTU furnace
- 15,000 BTU ducted air conditioner
- Prepped for a second air conditioner
- 50 Amp electrical service with detachable cord
- 55 Amp converter
- 12 Volt Water Pump

CONSTRUCTION

- 12" Powder coated I-beam frame
- Darco wrapped main floor vapor moisture barrier
- 5/8" Seamless dynaspan sub floor with limited lifetime warranty
- 2" Wall studs constructed 16" on center
- Laminated veneer lumber slideout reinforcements
- Reinforced slide room openings
- 4 1/2" Crowned roof
- Radius corner blocks around windows and compartment doors

- Metal floor registers
- Super frame reinforced frame

SAFETY

- Safety chains
- Break away switch
- Electric brakes on all wheels
- Carbon monoxide detector
- LP detector
- Smoke detector
- GFI electrical outlets
- Tinted safety glass windows

UNIQUE RETREAT FEATURES

- Large bay windows with decorative exterior front
- 8' Tall ceilings
- 102" wide body construction
- Detachable hitch
- Residential high end furniture
- King bed standard (N/A 39/391MBNK)
- Central vacuum
- Black tank flush

RETREAT OPTIONS

- Electric patio awning
- Stabilizer jacks
- 2nd 13.5K BTU A/C
- Dual Pane Windows
(Only Available with Luxury Package)

Luxury Package (Optional)

- Champaign Laminated Sidewalls
- Solid Surface Counter Tops
- Chefs Gourmet Faucet
- Stainless Steel Appliance Package

LIVING ROOM HIGHLIGHTS

- 8' Ceiling height
- Solid wood slide room facia
- 39" Main slide room depth
- Decorative plantation blinds in living area
- 72" sleeper sofa
- Fireplace
- 40" HD LED TV (N/A 39MKTS, 39FDEN, 39LOFT, 39RDEN)
- 50" HD LED TV (39MKTS, 39LOFT, 39RLTS, 39RDEN)
- Theatre Seating (39MKTS, 39FDEN, 39LOFT, 39RDEN)
- DVD/AM/FM/CD/MP3 Stereo system with Bluetooth
- 12 Volt Charging station
- Recliner (39FDEN, 39FKSS)
- Free standing dinette with four chairs w/ flip storage (N/A 39RDEN)
- Residential recessed ceiling lighting
- Ceiling fan with light (39FDEN & 39FKSS only)

KITCHEN HIGHLIGHTS

- Extra deep double bowl kitchen stainless steel sink
- High rise faucet with pull out sprayer
- Residential "eat in" bar (FKSS, FDEN, RDEN)
- Bar stools (FKSS, FDEN, RDEN)
- Waste basket storage
- Solid wood shaker style residential cabinets with crown molding
- Pre-drilled and screwed hardwood cabinet framing
- Residential ball bearing drawer guides
- Microwave with carousel
- Three burner range with oven
- 16 Cu. Ft. residential refrigerator
- Single door pantry
- Residential water purification system
- Upgrade central vacuum system

BATH

- Porcelain Toilet with foot flush
- Radius glass shower with surround
- Fantastic fan w/convenient wall mount control (N/A 39LOFT)
- Large medicine cabinet
- Louvered door on large closet
- Washer and dryer prep (N/A 39FDEN, 39RDEN, 39MBNK, 39RLTS)
- Dressing mirror

BEDROOM

- 7' Tall bed slide
- Oversized bed slide w/overhead cabinets, accented w decorative cabinet doors & functional reading lights
- Mega storage under master beds

- Gas strut assisted bed lift
- Etched glass cabinet doors in the bed slide
- Two door wardrobe
- Fully extended deep dresser drawers
- Pleated shades
- Large panoramic window
- Residential ceiling fan
- Recessed decorative lighting
- Prep for 2nd TV

EXTERIOR

- Fiberglass front
- Residential exterior soffit lights
- Dual 30 Lbs LP bottles with automatic change over and cover
- Large swing away grab handle (Main Door)
- 2 Exterior speakers
- Residential patio door with screen door
- Exterior shower
- 50 Amp detachable power cord
- Satellite / Cable TV hook-up
- 110 volt exterior outlets
- E-Coated Wheels
- Heated & Enclosed Underbelly

MECHANICS

- 16 gallon gas/electric DSI water heater
- 40,000 BTU furnace
- 15,000 BTU ducted air conditioner
- Prepped for a second air conditioner
- 50 Amp electrical service with detachable cord
- 55 Amp converter
- 12 Volt Water Pump

CONSTRUCTION

- 12" Powder coated I-beam frame
- Darco wrapped main floor vapor moisture barrier
- 5/8" Seamless dynaspan sub floor with limited lifetime warranty
- 2" Wall studs constructed 16" on center
- Laminated veneer lumber slideout reinforcements
- Reinforced slide room openings
- 4 1/2" Crowned roof
- Radius corner blocks around windows and compartment doors

- Metal floor registers
- Super frame reinforced frame

SAFETY

- Safety chains
- Break away switch
- Electric brakes on all wheels
- Carbon monoxide detector
- LP detector
- Smoke detector
- GFI electrical outlets
- Tinted safety glass windows

UNIQUE RETREAT FEATURES

- Large bay windows with decorative exterior front
- 8' Tall ceilings
- 102" wide body construction
- Detachable hitch
- Residential high end furniture
- King bed standard (N/A 39/391MBNK)
- Central vacuum
- Black tank flush

RETREAT OPTIONS

- Electric patio awning
- Stabilizer jacks
- 2nd 13.5K BTU A/C
- Dual Pane Windows
(Only Available with Luxury Package)

Luxury Package [Optional]

- Champaign Laminated Sidewalls
- Solid Surface Counter Tops
- Chefs Gourmet Faucet
- Stainless Steel Appliance Package

RETREAT

DESTINATION TRAILERS



RIGHT FEATURES. RIGHT PRICE. RIGHT NOW.

WWW.KEYSTONERV.COM/RETREAT

HIDEOUT BRANDS ARE A PROUD RECIPIENT OF THE DEALER SATISFACTION QUALITY CIRCLE AWARD

BUY LOCALLY

PURCHASING YOUR RV LOCALLY

It's up to you where you purchase your new Retreat, but may we suggest your local dealer? Not only does it help your local economy and provide jobs, but it will also give you an opportunity to develop a service relationship with someone that will come to know you and your coach. Congratulations on finding the best built, best equipped and best value in the industry. Happy travels!

YOUR LOCAL DEALER IS:

JANUARY 2018

DISCLAIMER: Product information is as accurate as possible as of the date of publication of this brochure. All features, floor plans, and specifications in this brochure are subject to change without notice. Please also consult Keystone's web site at www.keystonerv.com for more current product information and specifications. Tow Vehicle Disclaimer. CAUTION: Owners of Keystone recreational vehicles are solely responsible for the selection and proper use of tow vehicles. All customers should consult with a motor vehicle manufacturer or their dealer concerning the purchase and use of suitable tow vehicles for Keystone products. Keystone disclaims any liability or damages suffered as a result of the selection, operation, use or misuse of a tow vehicle. KEYSTONE'S LIMITED WARRANTY DOES NOT COVER DAMAGE TO THE RECREATIONAL VEHICLE OR THE TOW VEHICLE AS A RESULT OF THE SELECTION, OPERATION, USE OR MISUSE OF THE TOW VEHICLE. REFERENCE KEYSTONERV COMPANY OWNERS MANUAL FOR LIMITED WARRANTY DETAILS. *Length is defined as the distance from the center line of hitch pin/coupler to rear bumper of trailer.



Keystone RV
Company

WWW.KEYSTONERV.COM
574.535.2100 • 2642 HACKBERRY DRIVE
P.O. BOX 2000 • GOSHEN, IN 46527



Go RVing.

RETREAT

DESTINATION TRAILERS



RIGHT FEATURES. RIGHT PRICE. RIGHT NOW. WWW.KEYSTONERV.COM/RETREAT

HIDEOUT BRANDS ARE A PROUD RECIPIENT OF THE DEALER SATISFACTION QUALITY CIRCLE AWARD

BUY LOCALLY PURCHASING YOUR RV LOCALLY

It's up to you where you purchase your new Retreat, but may we suggest your local dealer? Not only does it help your local economy and provide jobs, but it will also give you an opportunity to develop a service relationship with someone that will come to know you and your coach. Congratulations on finding the best built, best equipped and best value in the industry. Happy travels!

YOUR LOCAL DEALER IS:

JANUARY 2018

DISCLAIMER: Product information is as accurate as possible as of the date of publication of this brochure. All features, floor plans, and specifications in this brochure are subject to change without notice. Please also consult Keystone's web site at www.keystonerv.com for more current product information and specifications. Tow Vehicle Disclaimer. CAUTION: Owners of Keystone recreational vehicles are solely responsible for the selection and proper use of tow vehicles. All customers should consult with a motor vehicle manufacturer or their dealer concerning the purchase and use of suitable tow vehicles for Keystone products. Keystone disclaims any liability or damages suffered as a result of the selection, operation, use or misuse of a tow vehicle. KEYSTONE'S LIMITED WARRANTY DOES NOT COVER DAMAGE TO THE RECREATIONAL VEHICLE OR THE TOW VEHICLE AS A RESULT OF THE SELECTION, OPERATION, USE OR MISUSE OF THE TOW VEHICLE. REFERENCE KEYSTONERV COMPANY OWNERS MANUAL FOR LIMITED WARRANTY DETAILS. *Length is defined as the distance from the center line of hitch pin/coupler to rear bumper of trailer.



WWW.KEYSTONERV.COM
574.535.2100 • 2642 HACKBERRY DRIVE
P.O. BOX 2000 • GOSHEN, IN 46527



Go RVing.