



Springdale

by Keystone 



**THE ONLY 2017
QUALITY CIRCLE AWARD WINNER
IN ITS CATEGORY
2 YEARS AND RUNNING...**



2018

WESTERN
EDITION



Springdale

by Keystone 



**THE ONLY 2017
QUALITY CIRCLE AWARD WINNER
IN ITS CATEGORY
2 YEARS AND RUNNING...**



2018

**WESTERN
EDITION**

COLE
DAVIS



**Keystone RV
Company**

AN ICONIC COMPANY

When Cole Davis founded Keystone RV in 1996 his vision was clear: Build a quality RV loaded with features priced thousands less than other RVs on the market. To accomplish his goal, Cole built a strong team, focused on keeping overhead low, and empowered employees closest to the customer to make decisions. Within a few short months after opening the doors, Keystone produced its very first camper. Delivering big on quality, features and value, the public fell in love and a star was born.

As customers appetite skyrocketed, new Keystone models were added to satisfy growing customer demand. Along with this tremendous growth came the need for expanded production. To meet this need, more manufacturing plants were built and staffed. By the beginning of 2000, Keystone was leading the industry in fifth wheel and trailer sales. Today, Keystone RV Company has grown to encompass over 1 million square feet of manufacturing space with facilities in Goshen, Indiana and Pendleton, Oregon. While Keystone is no longer the small "start up" we once were, our mission has remained true to Cole's vision—"Do the job right and make sure we deliver a quality product every time."



WIRED FOR PERFORMANCE

THE ONLY TOWABLE MANUFACTURER TO INCORPORATE COLOR-CODED AND NUMBERED ELECTRICAL WIRING ON ALL PRODUCTS

- Creates a clean, well organized wiring layout
- Makes it easy to trace electrical circuits and saves troubleshooting time

SUPERCHARGED A/C COOLING



TUF-LOK THERMOPLASTIC COUPLERS FORM A PERMANENT, CRUSH-RESISTANT SEAL IN YOUR AIR-CONDITIONING DUCT

- Securely joins ductwork and air-conditioning units
- Crush-resistant design won't pull apart due to rough roads, heat and stress
- Dramatically reduces chilled-air leaks to boost cooling efficiency and comfort

IN-FLOOR RESIDENTIAL HEAT-DUCTS



Keystone RV

Competitor

RESIDENTIAL IN-FLOOR HEAT-DUCT SYSTEM JUST LIKE IN YOUR HOME

- In-floor, hot air vents spaced for greatest comfort
- Distributes heat evenly and warms the floor

MOST RELIABLE PRODUCTS IN THE INDUSTRY / QUALITY, PROCESS DRIVEN MANUFACTURING / CONS

COLE DAVIS

President, Keystone RV Company
Member, RV Industry Association
Member, National RV Dealers Association
Member, RV Industry Association



WIRED FOR PERFORMANCE

THE ONLY TOWABLE MANUFACTURER TO INCORPORATE COLOR-CODED AND NUMBERED ELECTRICAL WIRING ON ALL PRODUCTS

- Creates a clean, well organized wiring layout
- Makes it easy to trace electrical circuits and saves troubleshooting time



Keystone RV Company

AN ICONIC COMPANY

When Cole Davis founded Keystone RV in 1996 his vision was clear: Build a quality RV loaded with features priced thousands less than other RVs on the market. To accomplish his goal, Cole built a strong team, focused on keeping overhead low, and empowered employees closest to the customer to make decisions. Within a few short months after opening the doors, Keystone produced its very first camper. Delivering big on quality, features and value, the public fell in love and a star was born.

As customers appetite skyrocketed, new Keystone models were added to satisfy growing customer demand. Along with this tremendous growth came the need for expanded production. To meet this need, more manufacturing plants were built and staffed. By the beginning of 2000, Keystone was leading the industry in fifth wheel and trailer sales. Today, Keystone RV Company has grown to encompass over 1 million square feet of manufacturing space with facilities in Goshen, Indiana and Pendleton, Oregon. While Keystone is no longer the small "start up" we once were, our mission has remained true to Cole's vision—"Do the job right and make sure we deliver a quality product every time."

SUPERCHARGED A/C COOLING



TUF-LOK THERMOPLASTIC COUPLERS FORM A PERMANENT, CRUSH-RESISTANT SEAL IN YOUR AIR-CONDITIONING DUCT

- Securely joins ductwork and air-conditioning units
- Crush-resistant design won't pull apart due to rough roads, heat and stress
- Drastically reduces chilled-air leaks to boost cooling efficiency and comfort

IN-FLOOR RESIDENTIAL HEAT-DUCTS



RESIDENTIAL IN-FLOOR HEAT-DUCT SYSTEM JUST LIKE IN YOUR HOME

- In-floor, hot air vents spaced for greatest comfort
- Distributes heat evenly and warms the floor

MOST RELIABLE PRODUCTS IN THE INDUSTRY / QUALITY, PROCESS DRIVEN MANUFACTURING / CONS

BUILT

FOR THE LONG HAUL



TRU-FIT FIVE-POINT SLIDE ROOM CONSTRUCTION BACKED BY THE INDUSTRY'S-BEST 3-YEAR LIMITED STRUCTURAL WARRANTY

- Rain channels direct rain away from the slide openings
- Exterior bulb-seals in a locking track stay secure through extreme heat and cold
- Composite slide-room "glide" bar enables the room to move with no binding
- Reinforced roof, walls and floor
- Beefed-up aluminum header above slide room for greater strength

INNOVATION THAT STARTS WITH A SOLID FOUNDATION

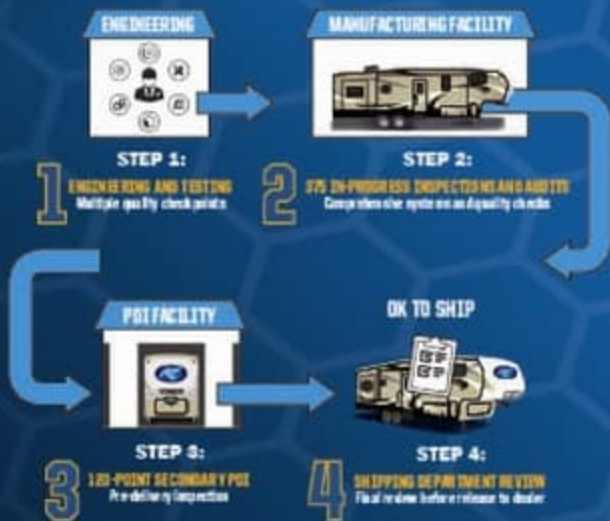
110



DSI
DEALER SATISFACTION INDEX

110 RVDA QUALITY CIRCLE AWARDS

- Keystone Brands have earned 110 DSI Quality Circle Awards since 2007



CONSUMER FOCUSED PRODUCTS AND SERVICE / MOST "DEALER SATISFACTION INDEX" AWARDED RECIPIENT

BUILT

FOR THE LONG HAUL



TRU-FIT FIVE-POINT SLIDE ROOM CONSTRUCTION BACKED BY THE INDUSTRY'S-BEST 3-YEAR LIMITED STRUCTURAL WARRANTY

- Rain channels direct rain away from the slide openings
- Exterior bulb-seals in a locking track stay secure through extreme heat and cold
- Composite slide-room "glide" bar enables the room to move with no binding
- Reinforced roof, walls and floor
- Beefed-up aluminum header above slide room for greater strength

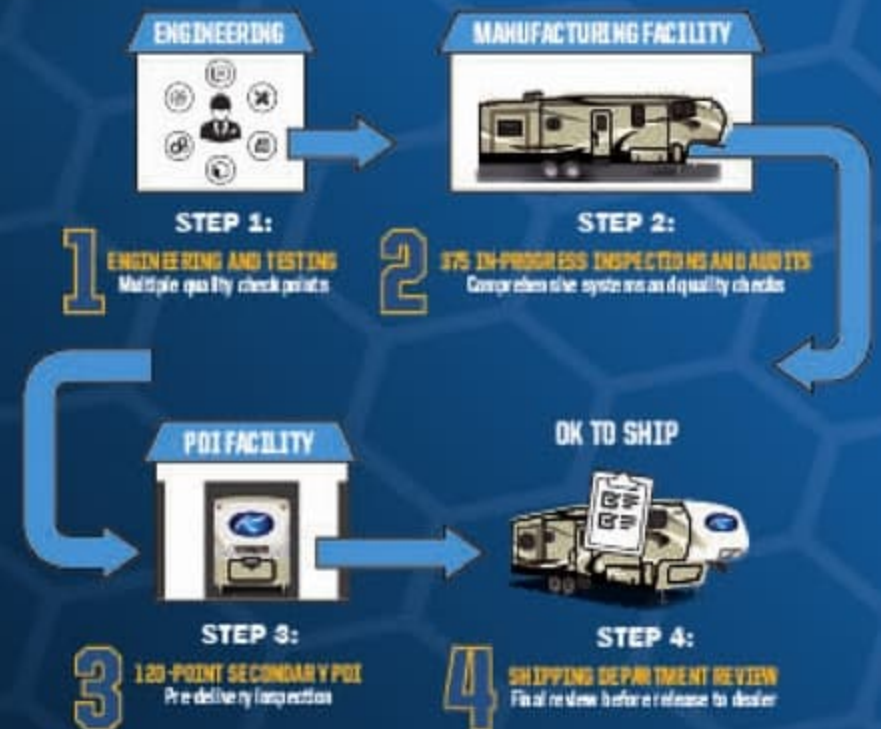
INNOVATION THAT STARTS WITH A SOLID FOUNDATION

110



110 RVDA QUALITY CIRCLE AWARDS

- Keystone Brands have earned 110 DSI Quality Circle Awards since 2007



CUSTOMER FOCUSED PRODUCTS AND SERVICE / MOST "DEALER SATISFACTION INDEX" AWARDED RECIPIENT

Our Story

An original Keystone RV brand 19 years and running strong... SPRINGDALE is a benchmark of success in the RV industry as well as a legacy for our company Keystone RV. Having made countless camping adventures even better... The SPRINGDALE brand of travel trailers has exceeded expectations and helped create memories for our customers that will last for many years to come.

At Keystone RV, we pride ourselves on unmatched quality control procedures and maintain customer service that is second to none. With our 19 year proven track record... SPRINGDALE travel trailers are constructed with our customers in mind. This quality craftsmanship and attention to detail ensures our customers a peace of mind that they will continue to get the most out of their camping season.

With SPRINGDALE, we understand that our customer's hard earned money should go just as far as their adventures can take them. That is why we believe in the importance of delivering the best floor plans, best features, best look and best quality... period. Once on the road to adventure, our customers will see how camping in their SPRINGDALE travel trailer "is just plain better"! Unmatched in its design, SPRINGDALE offers numerous features you can't find on any of our competitors, as well as more standard options and amenities than any travel trailer in its class. From our interior vaulted ceiling, 14' Super Slide Room to the "Do More" dinette table, we have remained focused on providing great value and convenient features that will always make camping in your SPRINGDALE travel trailer... A Better Way To Camp!

THE COMPLETE CHOICE

SPRINGDALE MINI SINGLE AXLE

- Full Size Compact Travel Trailer
- Complete Floorplan Choices
- Light Weight with Elbow Room
- Amazing Interior Height in its Class



SPRINGDALE SS (SUMMERLAND SERIES)

- Wide Variety of Floorplans
- Everything You Need To Go Camping
- First Time Buyer to the Experienced Camper
- Boldly Featured Yet Economically Sensitive



SPRINGDALE

- Complete Collection of Couples Coaches & Family Bunk Models
- Full Featured Travel Trailer With A Look & Features Not Found On Our Competition
- Everything From Single Slide 25' to 38' Double Slides



SPRINGDALE FIFTH WHEELS

- The Full Featured Entry Level 5th
- Great Bunkhouse & Couples Units
- Full Color Aluminum Frame Laminated Fiberglass Sidewalls



Our Story

An original Keystone RV brand 19 years and running strong... SPRINGDALE is a benchmark of success in the RV industry as well as a legacy for our company Keystone RV. Having made countless camping adventures even better... The SPRINGDALE brand of travel trailers has exceeded expectations and helped create memories for our customers that will last for many years to come.

At Keystone RV, we pride ourselves on unmatched quality control procedures and maintain customer service that is second to none. With our 19 year proven track record... SPRINGDALE travel trailers are constructed with our customers in mind. This quality craftsmanship and attention to detail ensures our customers a peace of mind that they will continue to get the most out of their camping season.

With SPRINGDALE, we understand that our customer's hard earned money should go just as far as their adventures can take them. That is why we believe in the importance of delivering the best floor plans, best features, best look and best quality... period. Once on the road to adventure, our customers will see how camping in their SPRINGDALE travel trailer "is just plain better"! Unmatched in its design, SPRINGDALE offers numerous features you can't find on any of our competitors, as well as more standard options and amenities than any travel trailer in its class. From our interior vaulted ceiling, 14' Super Slide Room to the "Do More" dinette table, we have remained focused on providing great value and convenient features that will always make camping in your SPRINGDALE travel trailer... A Better Way To Camp!

THE COMPLETE CHOICE

SPRINGDALE MINI SINGLE AXLE

- Full Size Compact Travel Trailer
- Complete Floorplan Choices
- Light Weight with Elbow Room
- Amazing Interior Height in its Class



SPRINGDALE SS (SUMMERLAND SERIES)

- Wide Variety of Floorplans
- Everything You Need To Go Camping
- First Time Buyer to the Experienced Camper
- Boldly Featured Yet Economically Sensitive



SPRINGDALE

- Complete Collection of Couples Coaches & Family Bunk Models
- Full Featured Travel Trailer With A Look & Features Not Found On Our Competition
- Everything From Single Slide 25' to 38' Double Slides



SPRINGDALE FIFTH WHEELS

- The Full Featured Entry Level 5th
- Great Bunkhouse & Couples Units
- Full Color Aluminum Frame Laminated Fiberglass Sidewalls



Springdale

WESTERN EDITION by Keystone



NEW FOR 2018

- ✓ NEW FLOORING - BEAUFLOOR DESIGN - 7YR WARRANTY
- ✓ NEW SOLID WOOD CABINET DESIGN
- ✓ NEW GRAPHICS PACKAGE
- ✓ NEW DESIGNER WALL BOARD
- ✓ MULTI-COLOR LEVEL LOOP CARPET
- ✓ NEW SLIDE ROOM FASCIA W/ WOOD INSERT ACCENTS
- ✓ 3 STEP ENTRY/EXIT (ALL WEST MODELS)
- ✓ DINETTE BOOTH W/ACCENT LIGHTING
- ✓ NEW PRESSED COUNTERTOPS (SG ONLY)
- ✓ NEW SMOOTH FRONT (SG ONLY)
- ✓ NEW HUGE UNDER MOUNTED KITCHEN SINK (SG ONLY)
- ✓ HARD DOOR TO BEDROOM IN SS MODELS (WHERE APPLICABLE)
- ✓ NEW FURRION ENTERTAINMENT SYSTEM
- ✓ NEW FURRION TV'S 32" & 39" (WHERE APPLICABLE)

ADVENTURE PACKAGE

- ✓ ELECTRIC STABILIZER JACKS
- ✓ ALUMINUM STEPS (EXCLUDES LE)
- ✓ SMOOTH FRONT
- ✓ QUICK CONNECT GAS LINE (EAST & OUTDOOR KITCHEN MODELS)
- ✓ PREPPED FOR BACK-UP CAMERA (EAST MODELS)
- ✓ PRESSED COUNTERTOPS
- ✓ DINETTE BOOTH LIGHTING
- ✓ UNDER-MOUNT ONE PIECE KITCHEN SINK (SG ONLY)
- ✓ XL GRAB HANDLE (SSR MODELS)

Springdale

WESTERN EDITION
by Keystone



NEW FOR 2018

- ✔ NEW FLOORING - BEAUFLOOR DESIGN-7YR WARRANTY
- ✔ NEW SOLID WOOD CABINET DESIGN
- ✔ NEW GRAPHICS PACKAGE
- ✔ NEW DESIGNER WALL BOARD
- ✔ MULTI-COLOR LEVEL LOOP CARPET
- ✔ NEW SLIDE ROOM FASCIA W/ WOOD INSERT ACCENTS
- ✔ 3 STEP ENTRY/EXIT (ALL WEST MODELS)
- ✔ DINETTE BOOTH W/ACCENT LIGHTING
- ✔ NEW PRESSED COUNTERTOPS (SG ONLY)
- ✔ NEW SMOOTH FRONT (SG ONLY)
- ✔ NEW HUGE UNDER MOUNTED KITCHEN SINK (SG ONLY)
- ✔ HARD DOOR TO BEDROOM IN SS MODELS (WHERE APPLICABLE)
- ✔ NEW FURRION ENTERTAINMENT SYSTEM
- ✔ NEW FURRION TV'S 32" & 39" (WHERE APPLICABLE)

ADVENTURE PACKAGE

- ✔ ELECTRIC STABILIZER JACKS
- ✔ ALUMINUM STEPS (EXCLUDES LE)
- ✔ SMOOTH FRONT
- ✔ QUICK CONNECT GAS LINE (EAST & OUTDOOR KITCHEN MODELS)
- ✔ PREPPED FOR BACK-UP CAMERA (EAST MODELS)
- ✔ PRESSED COUNTERTOPS
- ✔ DINETTE BOOTH LIGHTING
- ✔ UNDER-MOUNT ONE PIECE KITCHEN SINK (SG ONLY)
- ✔ XL GRAB HANDLE (SSR MODELS)

ECO-LITE TRAVEL TRAILERS



WEIGHT LENGTH **179QBWE**
3983 21' 10"



WEIGHT LENGTH **189FLWE**
4242 23' 7"



WEIGHT LENGTH **201RDWE**
4307 24'



WEIGHT LENGTH **202QBWE**
4290 24' 10"



WEIGHT LENGTH **212RBWE**
5345 25' 11"



WEIGHT LENGTH **220BHWE**
4701 26' 10"



WEIGHT LENGTH **240BHWE**
5765 28' 11"



WEIGHT LENGTH **242RKWE**
5784 28' 6"



WEIGHT LENGTH **245RBWE**
4761 27' 11"



WEIGHT LENGTH **252RLWE**
6030 29' 11"
NEW



WEIGHT LENGTH **258RLWE**
6007 28' 7"



WEIGHT LENGTH **260TBWE**
4883 28' 6"

Springdale's bunk house models offer you great options to match any of your family needs. We've built our bunkrooms with plenty of storage for all the clothes and toys. Best of all, everyone has their own space when it's time to settle in for the night. The perfect lineup of floorplans for your family, kids, grand-children, friends. Everyone fits with room to spare in a Springdale bunk house.

ECO-LITE TRAVEL TRAILERS



WEIGHT 3983 LENGTH 21' 10" **179QBWE**



WEIGHT 4242 LENGTH 23' 7" **189FLWE**



WEIGHT 4307 LENGTH 24' **201RDWE**



WEIGHT 4290 LENGTH 24' 10" **202QBWE**



WEIGHT 5345 LENGTH 25' 11" **212RBWE**



WEIGHT 4701 LENGTH 26' 10" **220BHWE**



WEIGHT 5765 LENGTH 28' 11" **240BHWE**



WEIGHT 5784 LENGTH 28' 6" **242RKWE**



WEIGHT 4751 LENGTH 27' 11" **245RBWE**



WEIGHT 6030 LENGTH 29' 11" **252RLWE**
NEW



WEIGHT 6007 LENGTH 29' 7" **258RLWE**



WEIGHT 4883 LENGTH 28' 6" **260TBWE**

Springdale's bunk house models offer you great options to match any of your family needs. We've built our bunkrooms with plenty of storage for all the clothes and toys. Best of all, everyone has their own space when it's time to settle in for the night. The perfect lineup of floorplans for your family, kids, grand-children, friends. Everyone fits with room to spare in a Springdale bunk house.

SSR TRAVEL TRAILERS



WEIGHT LENGTH
5851 27' 5" **235RBWE**



WEIGHT LENGTH
6903 32' 11" **270BHWE**



WEIGHT LENGTH
6731 31' 10" **271RLWE**



WEIGHT LENGTH
7206 32' 11" **280BHWE**
NEW



WEIGHT LENGTH
6960 32' 1" **282BHWE**

Springdale offers you family friendly floorplans that come packed to meet the needs of any sized family. Your family is sure to enjoy the increased spaciousness of our RL, RB, RK models. Springdale's bedroom provides spacious sleeping quarters and loads of storage space for a great night's sleep.

SRT TRAVEL TRAILERS



WEIGHT LENGTH
5521 34' 6" **211SRTWE**



WEIGHT LENGTH
5809 27' 10" **240SRTWE**

SSR TRAVEL TRAILERS



WEIGHT 5851 LENGTH 27' 5" **235RBWE**



WEIGHT 6903 LENGTH 32' 11" **270BHWE**



WEIGHT 6731 LENGTH 31' 10" **271RLWE**



WEIGHT 7206 LENGTH 32' 11" **280BHWE**
NEW



WEIGHT 6960 LENGTH 32' 1" **282BHWE**

Springdale offers you family friendly floorplans that come packed to meet the needs of any sized family. Your family is sure to enjoy the increased spaciousness of our RL, RB, RK models. Springdale's bedroom provides spacious sleeping quarters and loads of storage space for a great night's sleep.

SRT TRAVEL TRAILERS



WEIGHT 5521 LENGTH 34' 6" **211SRTWE**



WEIGHT 5809 LENGTH 27' 10" **240SRTWE**

38' TRAVEL TRAILERS 38's



- BUNK HOUSE W/ KIDS DINETTE
- 18 CU. FT. RESIDENTIAL REFRIGERATOR
- 10 GALLON GAS/ELECTRIC DSI WATER HEATER
- BEDROOM SLIDE

WEIGHT LENGTH **38BH**
8661 38' 11"



- SECTIONAL SOFA W/ FIREPLACE
- 18 CU. FT. RESIDENTIAL REFRIGERATOR
- 10 GALLON GAS/ELECTRIC DSI WATER HEATER
- BEDROOM SLIDE

WEIGHT LENGTH **38FL**
8587 38' 11"



- TWO QUEEN BEDS
- 18 CU. FT. RESIDENTIAL REFRIGERATOR
- 10 GALLON GAS/ELECTRIC DSI WATER HEATER
- BEDROOM SLIDE

WEIGHT LENGTH **38FQ**
8628 38' 11"

TOP 6 FEATURES

- 18 CU. FT. RESIDENTIAL REFRIGERATOR
- 10 GALLON GAS/ELECTRIC DSI WATER HEATER
- BEDROOM SLIDE
- 50 AMP SERVICE WIRED & BRACED FOR 2ND AC
- HEATED & ENCLOSED UNDERBELLY
- 60" PATIO DOOR

38' TRAVEL TRAILERS 38's



- BUNKHOUSE W/ KIDS DINETTE
- 18 CU. FT. RESIDENTIAL REFRIGERATOR
- 10 GALLON GAS/ELECTRIC DSI WATER HEATER
- BEDROOM SLIDE

WEIGHT 8661 LENGTH 38' 11" **38BH**



- SECTIONAL SOFA W/ FIREPLACE
- 18 CU. FT. RESIDENTIAL REFRIGERATOR
- 10 GALLON GAS/ELECTRIC DSI WATER HEATER
- BEDROOM SLIDE

WEIGHT 8587 LENGTH 38' 11" **38FL**



- TWO QUEEN BEDS
- 18 CU. FT. RESIDENTIAL REFRIGERATOR
- 10 GALLON GAS/ELECTRIC DSI WATER HEATER
- BEDROOM SLIDE

WEIGHT 8628 LENGTH 38' 11" **38FQ**

TOP 6 FEATURES

- 18 CU. FT. RESIDENTIAL REFRIGERATOR
- 10 GALLON GAS/ELECTRIC DSI WATER HEATER
- BEDROOM SLIDE
- 50 AMP SERVICE WIRED & BRACED FOR 2ND AC
- HEATED & ENCLOSED UNDERBELLY
- 60" PATIO DOOR

- 1 Continuous Steel I-Beam Powder Coated Frame
- 2 Walkable Crowned Roof
- 3 Hurricane Strap Reinforced Structure
- 4 Oversized Pass Through Storage
- 5 Diamond Plate Front Protector
- 6 One Piece Alpha-Ply Roof
- 7 3/8" Walkable Roof Decking
- 8 Dual 30 Lb. LP Bottles (Excluding SS)
- 9 Crowned Slide Box
- 10 Electric Awning
- 11 Residential Batten Insulation Throughout
- 12 Dual Battery Storage Tray
- 13 XL Entry Assist Handle (SSR)
- 14 5/8" Dynaspan Floor Decking
- 15 Aluminum Wheels (Opt.)
- 16 Triple Stage Slide Room Seals
- 17 Aluminum Triple Entry Steps (Select Models)
- 18 2x3 Floor Joists 12" on Center
- 19 Smooth Front (Excluding SS)
- 20 Radius Skirting
- 21 E-Z Lube Axles
- 22 0.30 Aluminum Baked Enamel Siding
- 23 Black Framed, Tinted Safety Glass Windows
- 24 Rain Gutter with Extended Down Spouts
- 25 Fender Skirts
- 26 13,500 BTU Ducted Air Conditioner (Opt. 15K)
- 27 Bumper Sewer Hose Storage
- 28 Exterior TV Mount (Select Models)
- 29 (4) Stabilizer Jacks
- 30 Electric Tongue Jack (Select Models)



- 30K BTU FURNACE
- ENCLOSED UNDERBELLY
- DEDICATED AIR DUCT FORCING HEAT DIRECTLY FROM FURNACE INTO THE UNDERBELLY
(EXCLUDES: 2020QB, 2600TB)
- LAYER OF ASTROFOIL IN FLOOR (WEST)
- DOUBLE INSULATION IN ROOF (WEST)



E-Z LUBE AXLES

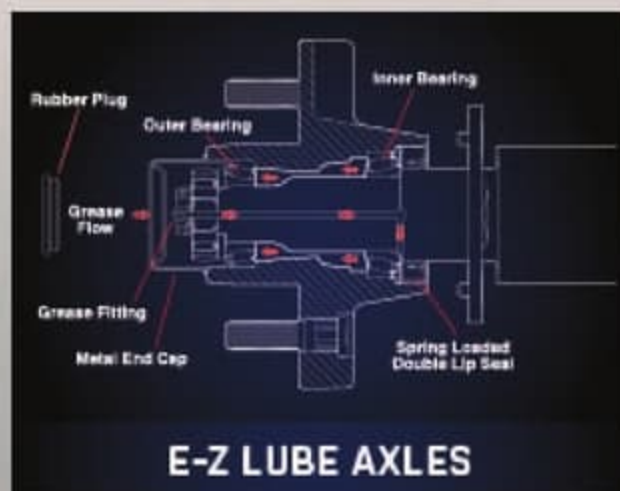


ELECTRIC BRAKES

- 1 Continuous Steel I-Beam Powder Coated Frame
- 2 Walkable Crowned Roof
- 3 Hurricane Strap Reinforced Structure
- 4 Oversized Pass Through Storage
- 5 Diamond Plate Front Protector
- 6 One Piece Alpha-Ply Roof
- 7 3/8" Walkable Roof Decking
- 8 Dual 30 Lb. LP Bottles (Excluding SS)
- 9 Crowned Slide Box
- 10 Electric Awning
- 11 Residential Batten Insulation Throughout
- 12 Dual Battery Storage Tray
- 13 XL Entry Assist Handle (SSR)
- 14 5/8" Dynaspan Floor Decking
- 15 Aluminum Wheels (Opt.)
- 16 Triple Stage Slide Room Seals
- 17 Aluminum Triple Entry Steps (Select Models)
- 18 2x3 Floor Joists 12" on Center
- 19 Smooth Front (Excluding SS)
- 20 Radius Skirting
- 21 E-Z Lube Axles
- 22 0.30 Aluminum Baked Enamel Siding
- 23 Black Framed, Tinted Safety Glass Windows
- 24 Rain Gutter with Extended Down Spouts
- 25 Fender Skirts
- 26 13,500 BTU Ducted Air Conditioner (Opt. 15K)
- 27 Bumper Sewer Hose Storage
- 28 Exterior TV Mount (Select Models)
- 29 [4] Stabilizer Jacks
- 30 Electric Tongue Jack (Select Models)



- 30K BTU FURNACE
- ENCLOSED UNDERBELLY
- DEDICATED AIR DUCT FORCING HEAT DIRECTLY FROM FURNACE INTO THE UNDERBELLY
(EXCLUDES: 2020QB, 2600TB)
- LAYER OF ASTROFOIL IN FLOOR (WEST)
- DOUBLE INSULATION IN ROOF (WEST)



E-Z LUBE AXLES



ELECTRIC BRAKES

Springdale

By Keystone RV



TOP SELLING FEATURES

PRESSED COUNTERTOPS
UNDERMOUNT SINK W/ COVER
FURRION ENTERTAINMENT SYSTEM
UPGRADED KITCHEN FAUCET
NEW FLOORING - BEAUFLOOR DESIGN-7YR WARRANTY

ADVENTURE PACKAGE

- ✔ ELECTRIC STABILIZER JACKS
- ✔ ALUMINUM STEPS
- ✔ PREPPED FOR BACK-UP CAMERA
- ✔ FRICTION HINGE DOOR
- ✔ DO-MORE DINETTE TABLE
- ✔ DINETTE BOOTH LIGHTING
- ✔ POWER FRONT LANDING GEAR
- ✔ UNDER-MOUNT ONE PIECE KITCHEN SINK
- ✔ QUICK CONNECT GAS LINE



WEIGHT 8493 LENGTH 32' 10" **253FWRE**



WEIGHT 8157 LENGTH 31' **278FWRL**



WEIGHT 8595 LENGTH 34' 10" **300FWBH**
NEW



WEIGHT 8880 LENGTH 33' 9" **302FWRK**

Springdale

by Keystone



TOP SELLING FEATURES

- PRESSED COUNTERTOPS
- UNDERMOUNT SINK W/ COVER
- FURRION ENTERTAINMENT SYSTEM
- UPGRADED KITCHEN FAUCET
- NEW FLOORING - BEAUFLOOR DESIGN - 7YR WARRANTY

ADVENTURE PACKAGE

- ✔ ELECTRIC STABILIZER JACKS
- ✔ ALUMINUM STEPS
- ✔ PREPPED FOR BACK-UP CAMERA
- ✔ FRICTION HINGE DOOR
- ✔ DO-MORE DINETTE TABLE
- ✔ DINETTE BOOTH LIGHTING
- ✔ POWER FRONT LANDING GEAR
- ✔ UNDER-MOUNT ONE PIECE KITCHEN SINK
- ✔ QUICK CONNECT GAS LINE



WEIGHT 8493 LENGTH 32' 10" **253FWRE**



WEIGHT 8157 LENGTH 31' **278FWRL**



WEIGHT 8595 LENGTH 34' 10" **300FWBH**
NEW



WEIGHT 8880 LENGTH 33' 9" **302FWRK**



TOP SELLING FEATURES

- ✔ NEW FLOORING - BEAUFLOOR
- ✔ NEW ALL WOOD CABINETS
- ✔ GRAPHICS PACKAGE
- ✔ NEW WALL BOARD
- ✔ MULTI-COLOR LEVEL LOOP CARPET
- ✔ SLIDE ROOM FASCIA
- ✔ FULL LENGTH GAS LINE W/ QUICK CONNECT
- ✔ NEW DINETTE TABLE TOP
- ✔ NEW COUNTERTOPS
- ✔ DINETTE BOOTH W/ ACCENT LIGHTS
- ✔ SOLAR PREP
- ✔ NEW FURRION ENTERTAINMENT SYSTEM
- ✔ NEW HUGE KITCHEN SINK
- ✔ UPGRADED FAUCET (KITCHEN)

SS PACKAGE

- ✔ ELECTRIC AWNING W/ LED LIGHTS
- ✔ POWER STABILIZER JACKS (SELECT MODELS)
- ✔ HEATED & ENCLOSED UNDERBELLY (EXCLUDING 2020QB, 2600TB)
- ✔ (2) 20LB PROPANE TANKS W/ AUTO CHANGE OVER
- ✔ QUICK CONNECT GAS LINE
- ✔ BACK UP CAMERA PREP
- ✔ FRONT DIAMOND PLATE
- ✔ STRUTTED ENTRY DOORS
- ✔ KING JACK HD ANTENNA

Springdale

by Keystone

SS



TOP SELLING FEATURES

- ✔ NEW FLOORING - BEAUFLOOR
- ✔ NEW ALL WOOD CABINETS
- ✔ GRAPHICS PACKAGE
- ✔ NEW WALL BOARD
- ✔ MULTI-COLOR LEVEL LOOP CARPET
- ✔ SLIDE ROOM FASCIA
- ✔ FULL LENGTH GAS LINE W/ QUICK CONNECT
- ✔ NEW DINETTE TABLE TOP
- ✔ NEW COUNTERTOPS
- ✔ DINETTE BOOTH W/ ACCENT LIGHTS
- ✔ SOLAR PREP
- ✔ NEW FURRION ENTERTAINMENT SYSTEM
- ✔ NEW HUGE KITCHEN SINK
- ✔ UPGRADED FAUCET (KITCHEN)

SS PACKAGE

- ✔ ELECTRIC AWNING W/ LED LIGHTS
- ✔ POWER STABILIZER JACKS (SELECT MODELS)
- ✔ HEATED & ENCLOSED UNDERBELLY (EXCLUDING 2020QB, 2600TB)
- ✔ (2) 20LB PROPANE TANKS W/ AUTO CHANGE OVER
- ✔ QUICK CONNECT GAS LINE
- ✔ BACK UP CAMERA PREP
- ✔ FRONT DIAMOND PLATE
- ✔ STRUTTED ENTRY DOORS
- ✔ KING JACK HD ANTENNA

BUNK MODELS



WEIGHT LENGTH
4861 28' 10" **2600TB**



WEIGHT LENGTH
6597 32' 1" **2820BH**



WEIGHT LENGTH
6528 32' 7" **2980BH**



WEIGHT LENGTH
6145 31' 4" **2720BH**



WEIGHT LENGTH
6701 33' 2" **2960BH**



WEIGHT LENGTH
7641 34' 11" **3030BH**

RL/RK/RB MODELS



WEIGHT LENGTH
4279 24' 10" **2020QB**



WEIGHT LENGTH
6005 29' 8" **2570RL**



WEIGHT LENGTH
5437 26' 2" **2200MB**



WEIGHT LENGTH
6051 28' 11" **2660RL**



WEIGHT LENGTH
5033 27' 11" **2450RB**



WEIGHT LENGTH
6615 33' 4" **2930RK**

NEW



BUNK MODELS



WEIGHT LENGTH **2600TB**
4861 28' 10"



WEIGHT LENGTH **2820BH**
6597 32' 1"



WEIGHT LENGTH **2980BH**
6528 32' 7"



WEIGHT LENGTH **2720BH**
6145 31' 4"



WEIGHT LENGTH **2960BH**
6701 33' 2"



WEIGHT LENGTH **3030BH**
7641 34' 11"

RL/RK/RB MODELS



WEIGHT LENGTH **2020QB**
4279 24' 10"



WEIGHT LENGTH **2570RL**
6005 29' 8"



WEIGHT LENGTH **2200MB**
5437 26' 2"



WEIGHT LENGTH **2660RL**
6051 28' 11"



WEIGHT LENGTH **2450RB**
5033 27' 11"



WEIGHT LENGTH **2930RK**
6615 33' 4"
NEW





SINGLE AXLES



HUGE FEATURES IN A "MINI" PACKAGE:

- ✔ 8' WIDE
- ✔ 78" INTERIOR HEIGHT
- ✔ GAS STRUTTED ENTRY DOOR
- ✔ DYNASPAN SEAMLESS FLOORING (25YR WARRANTY)
- ✔ GAS/ELECTRIC REFRIGERATOR
- ✔ GAS/ELECTRIC WATER HEATER
- ✔ 13.5K A/C (OPTIONAL)
- ✔ BLUETOOTH RADIO
- ✔ TV ANTENNA W/ SIGNAL BOOSTER
- ✔ FRONT DIAMOND PLATE
- ✔ FRONT (OPTION) & REAR STABILIZER JACKS
- ✔ SPARE TIRE (OPTIONAL)



WEIGHT LENGTH
3235 21'5" **1700FQ**



WEIGHT LENGTH
3285 21'5" **1800BH**



WEIGHT LENGTH
3295 21'5" **1750RD**



WEIGHT LENGTH
3350 21'5" **1850FL**



SINGLE AXLES



HUGE FEATURES IN A "MINI" PACKAGE:

- ✔ 8' WIDE
- ✔ 78" INTERIOR HEIGHT
- ✔ GAS STRUTTED ENTRY DOOR
- ✔ DYNASPAN SEAMLESS FLOORING (25YR WARRANTY)
- ✔ GAS/ELECTRIC REFRIGERATOR
- ✔ GAS/ELECTRIC WATER HEATER
- ✔ 13.5K A/C (OPTIONAL)
- ✔ BLUETOOTH RADIO
- ✔ TV ANTENNA W/ SIGNAL BOOSTER
- ✔ FRONT DIAMOND PLATE
- ✔ FRONT (OPTION) & REAR STABILIZER JACKS
- ✔ SPARE TIRE (OPTIONAL)



WEIGHT 3235 LENGTH 21'5" **1700FQ**



WEIGHT 3285 LENGTH 21'5" **1800BH**



WEIGHT 3295 LENGTH 21'5" **1750RD**



WEIGHT 3350 LENGTH 21'5" **1850FL**

SPECIFICATIONS

SPRINGDALE TRAVEL TRAILERS

MODEL	WEIGHT	CC	HITCH	FRESH WATER	WASTE WATER	GRAY WATER	LP6	LENGTH*	HEIGHT
179QBWE	3983	2047	530	60	40	40	60	21' 10"	10' 9"
189FLWE	4242	1713	455	60	38	40	60	23' 7"	10' 9"
201RDWE	4307	2223	530	60	40	40	60	24' 0"	10' 9"
202QBWE	4290	2210	550	60	40	40	60	24' 10"	10' 9"
211SRTWE	5521	2029	550	60	38	40	60	34' 6"	10' 6"
212RBWE	5345	2315	660	60	38	76	60	25' 11"	10' 11"
220BHWE	4701	2869	570	60	38	78	60	26' 10"	11' 4"
235RBWE	5851	1909	760	60	40	76	60	27' 5"	10' 11"
240BHWE	5785	1925	690	60	38	78	60	28' 11"	10' 11"
240SRTWE	5809	1881	690	60	38	78	60	27' 10"	10' 11"
242RKWE	5784	1946	730	60	38	80	60	28' 6"	10' 11"
245RBWE	4751	2809	560	60	38	78	60	27' 11"	10' 9"
252RLWE	6030	1570	620	60	38	78	60	29' 11"	10' 8"
259RLWE	6007	1593	600	60	38	78	60	29' 7"	10' 6"
260TBWE	4883	2642	525	60	38	40	60	28' 6"	10' 9"
270BHWE	6903	2707	810	60	38	78	60	32' 11"	11' 3"
271RLWE	6731	2969	900	60	40	38	60	31' 10"	11' 3"
280BHWE	7206	2394	805	52	39	60	60	32' 11"	11' 3"
282BHWE	6960	2740	940	60	38	78	60	32' 1"	11' 3"
282BHSEWE	6484	3006	690	60	38	78	60	32' 1"	11' 3"

SPRINGDALE FIFTH WHEELS

MODEL	WEIGHT	CC	HITCH	FRESH WATER	WASTE WATER	GRAY WATER	LP6	LENGTH*	HEIGHT
253FWRE	8493	1807	1500	52	39	39	60	32' 10"	11' 10"
278FWRL	8157	2038	1395	52	39	39	60	31' 0"	11' 10"
300FWBH	8595	1755	1555	52	69	78	60	34' 10"	11' 4"
302FWRK	8880	1440	1520	52	39	78	60	33' 9"	11' 4"

SS TRAVEL TRAILERS & SINGLE AXLES

MODEL	WEIGHT	CC	HITCH	FRESH WATER	WASTE WATER	GRAY WATER	LP6	LENGTH*	HEIGHT
2020QB	4279	2221	515	52	30	30	40	24' 10"	10' 6"
2200MB	5437	2233	670	52	30	78	40	26' 2"	11' 1"
2450RB	5033	2567	600	52	39	69	40	27' 11"	10' 6"
2570RL	6005	1610	615	52	39	69	40	29' 8"	10' 6"
2600TB	4861	2649	510	52	39	30	40	28' 10"	10' 6"
2660RL	6051	1594	645	52	39	39	40	28' 11"	10' 11"
2720BH	6145	1485	630	52	39	39	40	31' 4"	10' 6"
2820BH	6597	2003	690	52	39	69	40	32' 1"	11' 3"
2930RK	6615	2185	830	52	30	69	40	33' 4"	10' 11"
2960BH	6701	3019	920	52	30	39	40	33' 2"	10' 11"
2980BH	6665	2875	740	52	30	39	40	32' 7"	10' 11"
3030BH	7641	2089	930	52	39	39	40	34' 11"	10' 11"
1700FQ	3235	1205	480	27	30	32	20	21' 5"	10' 2"
1750RD	3295	1105	520	27	30	30	20	21' 5"	10' 2"
1800BH	3285	1115	485	27	30	30	20	21' 5"	10' 2"
1850FL	3350	1100	465	27	30	30	20	21' 5"	10' 2"

DISCLAIMER: Product information is as accurate as possible as of the date of publication of this brochure. All features, floor plans, and specifications in this brochure are subject to change without notice. Please also consult Keystone's web site at www.keystonecv.com for more current product information and specifications. Tow Vehicle Disclaimer: CAUTION: Owners of Keystone recreational vehicles are solely responsible for the selection and proper use of tow vehicles. All customers should consult with a motor vehicle manufacturer or their dealer concerning the purchase and use of suitable tow vehicles for Keystone products. Keystone disclaims any liability or damages suffered as a result of the selection, operation, use or misuse of a tow vehicle. KEYSTONE'S LIMITED WARRANTY DOES NOT COVER DAMAGE TO THE RECREATIONAL VEHICLE OR THE TOW VEHICLE AS A RESULT OF THE SELECTION, OPERATION, USE OR MISUSE OF THE TOW VEHICLE. *Length is defined as the distance from the centerline of hitch pin/coupler to rear bumper of trailer.

SPECIFICATIONS

SPRINGDALE TRAVEL TRAILERS

MODEL	WEIGHT	CC	HITCH	FRESH WATER	WASTE WATER	GRAY WATER	LP6	LENGTH*	HEIGHT
179QBWE	3983	2047	530	60	40	40	60	21' 10"	10' 9"
189FLWE	4242	1713	455	60	38	40	60	23' 7"	10' 9"
201RDWE	4307	2223	530	60	40	40	60	24' 0"	10' 9"
202QBWE	4290	2210	550	60	40	40	60	24' 10"	10' 9"
211SRTWE	5521	2029	550	60	38	40	60	34' 6"	10' 6"
212RBWE	5345	2315	660	60	38	76	60	25' 11"	10' 11"
220BHWE	4701	2869	570	60	38	78	60	26' 10"	11' 4"
235RBWE	5851	1909	760	60	40	76	60	27' 5"	10' 11"
240BHWE	5765	1925	690	60	38	78	60	28' 11"	10' 11"
240SRTWE	5809	1881	690	60	38	78	60	27' 10"	10' 11"
242RKWE	5784	1946	730	60	38	80	60	28' 6"	10' 11"
245RBWE	4751	2809	560	60	38	78	60	27' 11"	10' 9"
252RLWE	6030	1570	620	60	38	78	60	29' 11"	10' 6"
258RLWE	6007	1593	600	60	38	78	60	29' 7"	10' 6"
260TBWE	4883	2642	525	60	38	40	60	28' 6"	10' 9"
270BHWE	6903	2707	810	60	38	78	60	32' 11"	11' 3"
271RLWE	6731	2969	900	60	40	38	60	31' 10"	11' 3"
280BHWE	7206	2394	805	52	39	60	60	32' 11"	11' 3"
282BHWE	6960	2740	940	60	38	78	60	32' 1"	11' 3"
282BHSEWE	6484	3006	690	60	38	78	60	32' 1"	11' 3"

SPRINGDALE FIFTH WHEELS

MODEL	WEIGHT	CC	HITCH	FRESH WATER	WASTE WATER	GRAY WATER	LP6	LENGTH*	HEIGHT
253FWRE	8493	1807	1500	52	39	39	60	32' 10"	11' 10"
278FWRL	8157	2038	1395	52	39	39	60	31' 0"	11' 10"
300FWBH	8595	1755	1555	52	69	78	60	34' 10"	11' 4"
302FWRK	8880	1440	1520	52	39	78	60	33' 9"	11' 4"

SS TRAVEL TRAILERS & SINGLE AXLES

MODEL	WEIGHT	CC	HITCH	FRESH WATER	WASTE WATER	GRAY WATER	LP6	LENGTH*	HEIGHT
2020QB	4279	2221	515	52	30	30	40	24' 10"	10' 6"
2200MB	5437	2233	670	52	30	78	40	26' 2"	11' 1"
245ORB	5033	2567	600	52	39	69	40	27' 11"	10' 6"
257ORL	6005	1610	615	52	39	69	40	29' 8"	10' 6"
2600TB	4861	2649	510	52	39	30	40	28' 10"	10' 6"
266ORL	6051	1594	645	52	39	39	40	28' 11"	10' 11"
272OBH	6145	1485	630	52	39	39	40	31' 4"	10' 6"
282OBH	6597	2003	690	52	39	69	40	32' 1"	11' 3"
293ORK	6615	2185	830	52	30	69	40	33' 4"	10' 11"
296OBH	6701	3019	920	52	30	39	40	33' 2"	10' 11"
298OBH	6665	2875	740	52	30	39	40	32' 7"	10' 11"
303OBH	7641	2089	930	52	39	39	40	34' 11"	10' 11"
1700FQ	3235	1205	480	27	30	32	20	21' 5"	10' 2"
1750RD	3295	1105	520	27	30	30	20	21' 5"	10' 2"
1800BH	3285	1115	485	27	30	30	20	21' 5"	10' 2"
1850FL	3350	1100	465	27	30	30	20	21' 5"	10' 2"

DISCLAIMER: Product information is as accurate as possible as of the date of publication of this brochure. All features, floor plans, and specifications in this brochure are subject to change without notice. Please also consult Keystone's web site at www.keystoneev.com for more current product information and specifications. Tow Vehicle Disclaimer. CAUTION: Owners of Keystone recreational vehicles are solely responsible for the selection and proper use of tow vehicles. All customers should consult with a motor vehicle manufacturer or their dealer concerning the purchase and use of suitable tow vehicles for Keystone products. Keystone disclaims any liability or damages suffered as a result of the selection, operation, use or misuse of a tow vehicle. KEYSTONE'S LIMITED WARRANTY DOES NOT COVER DAMAGE TO THE RECREATIONAL VEHICLE OR THE TOW VEHICLE AS A RESULT OF THE SELECTION, OPERATION, USE OR MISUSE OF THE TOW VEHICLE. *Length is defined as the distance from the centerline of hitch pin/coupler to rear bumper of trailer.

STANDARDS & OPTIONS

	SPRINGDALE TT	SPRINGDALE FW	SS TT	MINI
EXTERIOR				
LAMINATED FIBERGLASS SIDEWALLS	-	S	-	-
ELECTRIC ADJUSTABLE FRONT LANDING GEAR	-	S	-	-
DIAMOND PLATE	S	-	S	S
ADJUSTABLE POWER AWNING	S	S	S	-
MANUAL PATIO AWNING	-	-	-	S
OUTSIDE 110 RECEPTACLE	S	S	S	S
ALUMINUM WHEELS	O	O	O	-
POWER TONGUE JACK	O	-	O	-
X-ENTRY ASSIST HANDLE (SSR MODELS)	S	S	-	-
ARCTIC PACKAGE (EXCLUDES: 2600TB, 2020QB)	S	S	S	-
POWDER COATED I-BEAM FRAME	S	S	S	-
EASY ULTRA-LUBE AXLES	S	S	S	S
FULL LENGTH OUTRIGGERS ON FRAME	S	S	S	S
DUAL BATTERY RACK	S	S	S	-
TWO 30 LB. LP BOTTLES	S	S	-	-
2 EXTERIOR SPEAKERS	S	S	S	S
TV ANTENNA WITH BOOSTER	S	S	S	S
OVERSIZED PASS THRU STORAGE	S	S	S	S
HURRICANE STRAPS REINFORCED STRUCTURE	S	S	S	S
FOUR HEAVY DUTY STABILIZER JACKS	S	-	S	O
TWO HEAVY DUTY STABILIZER JACKS	-	S	-	S
RADIAL TIRES	S	S	S	S
CAMBERED CHASSIS	S	S	S	S
96" EXTERIOR WIDTH	S	S	S	S
EXTERIOR SHOWER (HOT & COLD)	S	S	O	-
SPARE TIRE AND CARRIER	O	O	O	O
E-Z OPEN ENTRY STEP	S	S	S	S
50 AMP SERVICE W/DETACHABLE CORD (SELECT MODELS)	S	S	-	-
BLACK TANK FLUSH (EXCLUDES 270LE)	S	S	-	-
INTERIOR				
MINI BLINDS	-	-	S	S
TRI-FOLD SLEEPER SOFA (SELECT MODELS)	O	O	-	-
JACKNIFE SOFA BED	O	O	S	S
LARGE MEDICINE CABINET	S	S	S	S
PLEATED SHADES IN LIVING AREA	S	S	-	-
FULL STRUTTED STORAGE UNDER MASTER BED	S	S	-	-
NIGHT STAND W/DRAWER IN BEDROOM	S	S	-	-
32" TV (39" ON SOME MODELS)	O	O	O	-
2 INTERIOR SPEAKERS	S	S	S	S
AM/FM BLUETOOTH W/MP3 STEREO	S	S	S	S
RESIDENTIAL MICROWAVE	S	S	S	S
MONITOR PANEL	S	S	S	S
7 CU. FT. REFRIGERATOR	S	S	-	-
6 CU. FT. REFRIGERATOR (WEST & SS)	-	-	S	-
RESIDENTIAL REFRIGERATOR (38BH, 38FL, 38FQ ONLY)	S	-	-	-

	SPRINGDALE TT	SPRINGDALE FW	SS TT	MINI
INTERIOR (CONT.)				
3.2 CU. FT. GAS/ELECTRIC REFER	-	-	-	S
BALL BEARING DRAWER GUIDES	S	S	S	S
REVERSIBLE DINETTE CUSHIONS	-	S	S	S
HIGH RISE KITCHEN FAUCET	S	S	S	-
HIGH IMPACT ACRYLIC SINK	S	S	S	S
22" OVEN W/3 BURNER COOKTOP (WEST MODELS)	S	-	-	-
18" OVEN W/3 BURNER COOKTOP	-	S	S	-
2 BURNER COOKTOP	-	-	-	S
FREESTANDING TABLE & CHAIRS (SELECT MODELS)	O	O	-	-
"DO MORE DINETTE" TABLE (SELECT MODELS)	S	S	-	-
12 VOLT 55 AMP CONVERTER	S	S	S	-
15,000 BTU AIR CONDITIONER	O	O	O	-
13,500 BTU AIR CONDITIONER	S	S	S	O
8K BTU AIR CONDITIONER	-	-	-	S
FORCED AIR DSI 30K BTU FURNACE W/THERMOSTAT (DUCTED MOST MODELS) (EXCLUDING 2020, 2600)	S	S	S	-
20K BTU FURNACE	-	-	-	S
6 GAL. GAS/ELECTRIC DSI WATER HEATER	S	S	S	S
SKYLIGHT OVER TUB/SHOWER	S	S	-	-
FLEX PEX TUBING WITH 10 YEAR WARRANTY	S	S	S	S
82" VAULTED CEILING (38'S & 270LE)	S	-	-	-
TUB SURROUND	S	S	S	-
FOOT FLUSH TOILET	S	S	S	S
RG6 CABLE AND SATELLITE WIRING	S	S	S	S
2X3 FLOOR CONSTRUCTION 12" OC W/5/8TH DECKING	S	S	S	S
16" ON CENTER RAISED ROOF TRUSS SYSTEM	S	S	S	S
4 1/2" CROWNED ROOF	S	S	S	S
16" ON CENTER SIDE WALLS	S	S	S	S
R-7 INSULATION-FLOOR, ROOF, WALLS	S	S	S	S
SUMMER PACKAGE *	-	-	S	-
SAFETY				
FIRE EXTINGUISHER	S	S	S	S
SMOKE DETECTOR	S	S	S	S
LP DETECTOR	S	S	S	S
CO DETECTOR	S	S	S	S
SAFETY CHAINS	S	S	S	S
EMERGENCY BRAKE-A-WAY SWITCH	S	S	S	S

» SUMMERLAND SUMMER PACKAGE *

- Outdoor Shower
- 6 Gal. Gas/Electric DSI Water Heater
- RG6 Cable and Satellite Wiring
- 2 - 20# LP Tanks w/Cover
- Tub Surround

SPRINGDALE TT = SPRINGDALE TRAVEL TRAILERS
 SPRINGDALE FW = SPRINGDALE FIFTH WHEELS
 SS TT = SUMMERLAND SERIES TRAVEL TRAILERS
 MINI = SPRINGDALE SINGLE AXLE TRAVEL TRAILERS

S STANDARD | O OPTIONAL | - NOT AVAILABLE

STANDARDS & OPTIONS

EXTERIOR	SPRINGDALE TT	SPRINGDALE FW	SS TT	MINI
LAMINATED FIBERGLASS SIDEWALLS	-	S	-	-
ELECTRIC ADJUSTABLE FRONT LANDING GEAR	-	S	-	-
DIAMOND PLATE	S	-	S	S
ADJUSTABLE POWER AWNING	S	S	S	-
MANUAL PATIO AWNING	-	-	-	S
OUTSIDE 110 RECEPTACLE	S	S	S	S
ALUMINUM WHEELS	O	O	O	-
POWER TONGUE JACK	O	-	O	-
XL ENTRY ASSIST HANDLE (SSR MODELS)	S	S	-	-
ARCTIC PACKAGE (EXCLUDES: 2600TB, 2020QB)	S	S	S	-
POWDER COATED I-BEAM FRAME	S	S	S	-
EASY ULTRA-LUBE AXLES	S	S	S	S
FULL LENGTH OUTRIGGERS ON FRAME	S	S	S	S
DUAL BATTERY RACK	S	S	S	-
TWO 30 LB. LP BOTTLES	S	S	-	-
2 EXTERIOR SPEAKERS	S	S	S	S
TV ANTENNA WITH BOOSTER	S	S	S	S
OVERSIZED PASS THRU STORAGE	S	S	S	S
HURRICANE STRAPS REINFORCED STRUCTURE	S	S	S	S
FOUR HEAVY DUTY STABILIZER JACKS	S	-	S	O
TWO HEAVY DUTY STABILIZER JACKS	-	S	-	S
RADIAL TIRES	S	S	S	S
CAMBERED CHASSIS	S	S	S	S
96" EXTERIOR WIDTH	S	S	S	S
EXTERIOR SHOWER (HOT & COLD)	S	S	O	-
SPARE TIRE AND CARRIER	O	O	O	O
E-Z OPEN ENTRY STEP	S	S	S	S
50 AMP SERVICE W/DETACHABLE CORD (SELECT MODELS)	S	S	-	-
BLACK TANK FLUSH (EXCLUDES 270LE)	S	S	-	-
INTERIOR				
MINI BLINDS	-	-	S	S
TRI-FOLD SLEEPER SOFA (SELECT MODELS)	O	O	-	-
JACKNIFE SOFA BED	O	O	S	S
LARGE MEDICINE CABINET	S	S	S	S
PLEATED SHADES IN LIVING AREA	S	S	-	-
FULL STRUTTED STORAGE UNDER MASTER BED	S	S	-	-
NIGHTSTAND W/DRAWER IN BEDROOM	S	S	-	-
32" TV (39" ON SOME MODELS)	O	O	O	-
2 INTERIOR SPEAKERS	S	S	S	S
AM/FM BLUETOOTH W/MP3 STEREO	S	S	S	S
RESIDENTIAL MICROWAVE	S	S	S	S
MONITOR PANEL	S	S	S	S
7 CU. FT. REFRIGERATOR	S	S	-	-
6 CU. FT. REFRIGERATOR (WEST & SS)	-	-	S	-
RESIDENTIAL REFRIGERATOR (38BH, 38FL, 38FQ ONLY)	S	-	-	-

INTERIOR (CONT.)	SPRINGDALE TT	SPRINGDALE FW	SS TT	MINI
3.2 CU. FT. GAS/ELECTRIC REFER	-	-	-	S
BALL BEARING DRAWER GUIDES	S	S	S	S
REVERSIBLE DINETTE CUSHIONS	-	S	S	S
HIGH RISE KITCHEN FAUCET	S	S	S	-
HIGH IMPACT ACRYLIC SINK	S	S	S	S
22" OVEN W/3 BURNER COOKTOP (WEST MODELS)	S	-	-	-
18" OVEN W/3 BURNER COOKTOP	-	S	S	-
2 BURNER COOKTOP	-	-	-	S
FREESTANDING TABLE & CHAIRS (SELECT MODELS)	O	O	-	-
DO MORE DINETTE TABLE (SELECT MODELS)	S	S	-	-
12 VOLT 55 AMP CONVERTER	S	S	S	-
15,000 BTU AIR CONDITIONER	O	O	O	-
13,500 BTU AIR CONDITIONER	S	S	S	O
8K BTU AIR CONDITIONER	-	-	-	S
FORCED AIR DSI 30K BTU FURNACE W/THERMOSTAT (DUCTED MOST MODELS) (EXCLUDING 2020, 2600)	S	S	S	-
20K BTU FURNACE	-	-	-	S
6 GAL. GAS/ELECTRIC DSI WATER HEATER	S	S	S	S
SKYLIGHT OVER TUB/SHOWER	S	S	-	-
FLEX PEX TUBING WITH 10 YEAR WARRANTY	S	S	S	S
82" VAULTED CEILING (38" S & 270LE)	S	-	-	-
TUB SURROUND	S	S	S	-
FOOT FLUSH TOILET	S	S	S	S
RG6 CABLE AND SATELLITE WIRING	S	S	S	S
2X3 FLOOR CONSTRUCTION 12" OC W/5/8TH DECKING	S	S	S	S
16" ON CENTER RAISED ROOF TRUSS SYSTEM	S	S	S	S
4 1/2" CROWNED ROOF	S	S	S	S
16" ON CENTER SIDE WALLS	S	S	S	S
R-7 INSULATION-FLOOR, ROOF, WALLS	S	S	S	S
SUMMER PACKAGE *	-	-	S	-
SAFETY				
FIRE EXTINGUISHER	S	S	S	S
SMOKE DETECTOR	S	S	S	S
LP DETECTOR	S	S	S	S
CO DETECTOR	S	S	S	S
SAFETY CHAINS	S	S	S	S
EMERGENCY BRAKE-A-WAY SWITCH	S	S	S	S

» SUMMERLAND SUMMER PACKAGE *

- Outdoor Shower
- 6 Gal. Gas/Electric DSI Water Heater
- RG6 Cable and Satellite Wiring
- 2 - 20# LP Tanks w/Cover
- Tub Surround

SPRINGDALE TT = SPRINGDALE TRAVEL TRAILERS
 SPRINGDALE FW = SPRINGDALE FIFTH WHEELS
 SS TT = SUMMERLAND SERIES TRAVEL TRAILERS
 MINI = SPRINGDALE SINGLE AXLE TRAVEL TRAILERS

S STANDARD | O OPTIONAL | - NOT AVAILABLE

Springdale

WESTERN
EST. 1971

Springdale

SS



THE ONLY 2017 QUALITY CIRCLE AWARD WINNER IN ITS CATEGORY 2 YEARS AND RUNNING...



BISCOTTI DECOR



BISTRO DECOR



LATTE DECOR



PURCHASING YOUR RV LOCALLY

It's up to you where you purchase your new Springdale, but may we suggest your local dealer? Not only does it help your local economy and provide jobs, but it will also give you an opportunity to develop a service relationship with someone that will come to know you and your coach. Congratulations on finding the best built, best equipped and best value in the industry. Happy travels!

YOUR LOCAL DEALER IS:

JANUARY 2018



**Keystone RV
Company**

WWW.KEYSTONERV.COM
574.535.2100 • 2642 HACKBERRY DRIVE
P.O. BOX 2000 • GOSHEN, IN 46527



Go RVing

DISCLAIMER: Product information is as accurate as possible as of the date of publication of this brochure. All features, floor plans, and specifications in this brochure are subject to change without notice. Please also consult Keystone's web site at www.keystonerv.com for more current product information and specifications. Tow Vehicle Disclaimer. CAUTION: Owners of Keystone recreational vehicles are solely responsible for the selection and proper use of tow vehicles. All customers should consult with a motor vehicle manufacturer or their dealer concerning the purchase and use of suitable tow vehicles for Keystone products. Keystone disclaims any liability or damages suffered as a result of the selection, operation, use or misuse of a tow vehicle. KEYSTONE'S LIMITED WARRANTY DOES NOT COVER DAMAGE TO THE RECREATIONAL VEHICLE OR THE TOW VEHICLE AS A RESULT OF THE SELECTION, OPERATION, USE OR MISUSE OF THE TOW VEHICLE. *Length is defined as the distance from the centerline of hitch pin/coupler to rear bumper of trailer.

A BETTER WAY TO CAMP | WWW.KEYSTONERV.COM/SPRINGDALE

Springdale

WESTERN
EDITION

Springdale



THE ONLY 2017 QUALITY CIRCLE AWARD WINNER IN ITS CATEGORY 2 YEARS AND RUNNING...



BISCOTTI DECOR



BISTRO DECOR



LATTE DECOR



PURCHASING YOUR RV LOCALLY

It's up to you where you purchase your new Springdale, but may we suggest your local dealer? Not only does it help your local economy and provide jobs, but it will also give you an opportunity to develop a service relationship with someone that will come to know you and your coach. Congratulations on finding the best built, best equipped and best value in the industry. Happy travels!

YOUR LOCAL DEALER IS:

JANUARY 2018



Keystone RV Company

WWW.KEYSTONERV.COM
574.535.2100 • 2642 HACKBERRY DRIVE
P.O. BOX 2000 • GOSHEN, IN 46527



Go RVing.

DISCLAIMER: Product information is as accurate as possible as of the date of publication of this brochure. All features, floor plans, and specifications in this brochure are subject to change without notice. Please also consult Keystone's web site at www.keystonerv.com for more current product information and specifications. Tow Vehicle Disclaimer. CAUTION: Owners of Keystone recreational vehicles are solely responsible for the selection and proper use of tow vehicles. All customers should consult with a motor vehicle manufacturer or their dealer concerning the purchase and use of suitable tow vehicles for Keystone products. Keystone disclaims any liability or damages suffered as a result of the selection, operation, use or misuse of a tow vehicle. KEYSTONE'S LIMITED WARRANTY DOES NOT COVER DAMAGE TO THE RECREATIONAL VEHICLE OR THE TOW VEHICLE AS A RESULT OF THE SELECTION, OPERATION, USE OR MISUSE OF THE TOW VEHICLE. *Length is defined as the distance from the centerline of hitch pin/coupler to rear bumper of trailer.

A BETTER WAY TO CAMP | WWW.KEYSTONERV.COM/SPRINGDALE