



Made to Fit

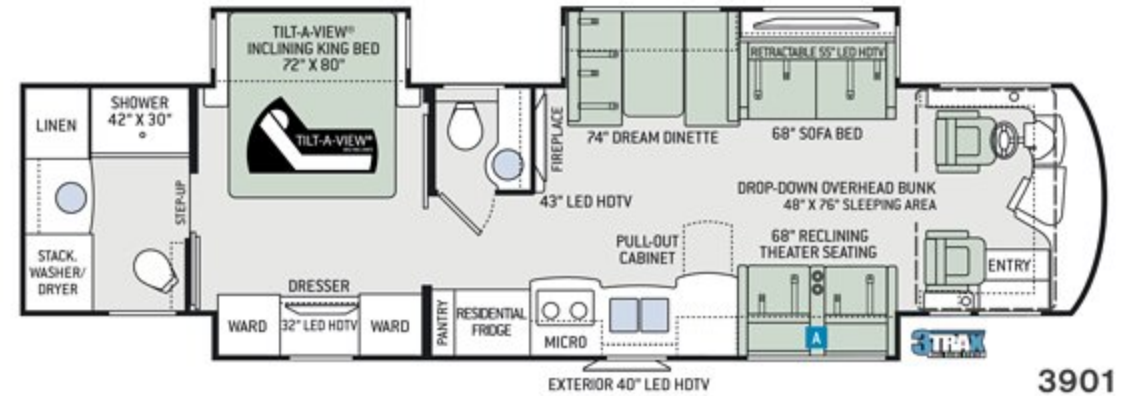


ARIA[®]

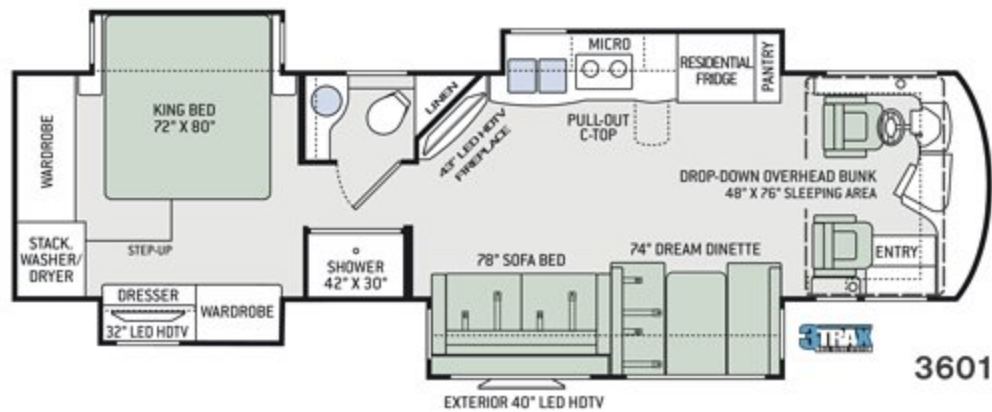
BY THOR MOTOR COACH

The newest member of our luxury Class A diesel line thoughtfully designed with you in mind.

Floor Plans



OPTION



Specifications

	3401	3601	3901	4000
Chassis	Freightliner XC-R	Freightliner XC-R	Freightliner XC-R	Freightliner XC-R
Gross Vehicle (GVWR)	32,400	32,400	35,320	35,320
Gross Combined (GCWR)	42,400	42,400	45,320	45,320
Wheel Base	208"	228"	272"	284"
Exterior Length	34'-7"	36'-3"	39'-11"	40'-11"
Exterior Height (w/AC)	12'-6"	12'-6"	12'-6"	12'-6"
Exterior Width (w/o mirrors)	101"	101"	101"	101"
Interior Height (living area)	84"	84"	84"	84"
Awning Size	20'	12'-4"	20'	20'
Fuel (gal)	100	100	100	100
LPG (lbs)	105	105	105	105
Fresh/Waste/Gray Water (gal)	91 / 51 / 51	91 / 51 / 51	91 / 51 / 51	91 / 51 / 70
Water Heater (gal)	10	10	10	10
Furnace (BTUs)	35,000	35,000	35,000	(2) 20,000
Exterior Storage Capacity (cu. ft.)	125	160	215	240



A home needs a strong foundation and that's especially true for the home that rolls down the road. We partnered with industry leaders, Freightliner® Custom Chassis and MORryde® International, to bring you this innovative building design. The Atlas Foundation™ is the premier building platform and substructure in the industry.



3TRAX™ is our in-wall slideout system, housing all the moving and mechanical parts within the sidewall of the motorhome. This triple track design supports large rooms, like those found in full-wall slideouts, ensuring simple, reliable, maintenance-free operation. What sets 3TRAX™ apart is the patented rail system, in-floor roller guides and electric motor design. For more information, visit thormotorcoach.com/3TRAX.

Interior Decor



CRYSTAL SHORES



HAZEL HARBOR



RIVER MARBLE



HIGH-GLOSS GLAZED MILAN



HIGH-GLOSS GLAZED NEWPORT



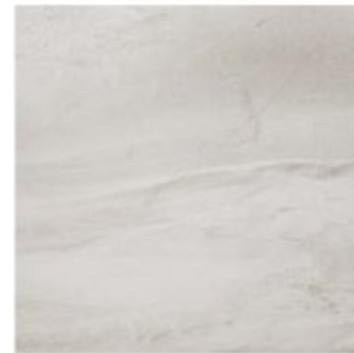
HIGH-GLOSS GLAZED PACIFIC



KITCHEN & DINETTE COUNTERTOPS



BEDROOM & BATHROOM COUNTERTOP



POLISHED PORCELAIN TILE FLOORING

Exterior Graphics



HERITAGE FULL-BODY PAINT



ODYSSEY FULL-BODY PAINT



SAPPHIRE FULL-BODY PAINT



STERLING FULL-BODY PAINT



Thinking about buying a new coach? Have a question about one of our motorhomes? Trying to find a dealer near you?

Our Coach Link support team is here to help you in your purchase of a new motorhome! This dynamic team focuses directly on helping you find the answers you need to help get you behind the wheel of one of our great new motorhomes. Call: 800.860.5658 or visit us online: thormotorcoach.com

Features

CONSTRUCTION & EXTERIOR

- Freightliner® XC-R Raised Rail Chassis with Atlas™ Foundation
- Cummins® ISB-XT 6.7L Engine with 360HP & 800 lb.-ft. Torque
- 6-Speed Allison MH-3000 Automatic Transmission
- Air-Ride™ Suspension
- I-Beam Front Axle with 55° Wheel Cut
- Exhaust Brake
- Sachs® Shock Absorbers
- 100-gallon Fuel Tank with Dual Fills
- One-Piece Fiberglass Front & Rear Caps
- Invisible Front Paint Protection
- One-Piece Windshield
- Full-Body Paint Package
- Automatic Leveling Jacks with Touchpad Controls
- Side-Hinged Locking Compartment Doors
- Basement Pass-Through Storage
- Easy Slide Storage Tray
- Power Entry Door & Patio Lateral Arm Awnings with Integrated LED Lighting
- Slideout Room Topper Awnings
- Patio Light (Both Sides)
- Roof Ladder
- Frameless Dual Pane Windows
- 10,000-lb. Trailer Hitch with 7-pin Round Connector

AUTOMOTIVE & COCKPIT

- 10" Touchscreen Dash Radio with Bluetooth®, GPS Navigation & SiriusXM® Radio Capability
- Back-Up Monitor with Three Camera System
- Chrome Heated/Power Mirrors with Integrated Side View Cameras

- Leatherette Reclining/Swivel Power Adjustable Captain's Chairs (Passenger Seat has Electric Footrest)
- Driver & Passenger Overhead Storage Cabinetry
- Tilt/Telescoping Steering Column
- Cruise Control
- Emergency Engine Start Switch
- Air Horns
- Fog Lights
- Power Solar & Privacy Shades on Windshield
- Manual Solar & Privacy Shades on Side Windows
- Electric Step Cover
- 275/80R 22.5" Radial Tires with Aluminum Wheels
- Power Drop-Down Hide-Away Overhead Bunk with Cotton Cloud™ Mattress

AUTOMOTIVE & COCKPIT OPTION

- Remove Power Drop-Down Hide-Away Overhead Bunk with Cotton Cloud™ Mattress

INTERIOR

- Polished Porcelain Tile Throughout
- Ceiling Ducted Whisper Air™ Central Cooling System
- LED Lighting
- High-Gloss Glazed Cabinetry with Solid Wood Raised Panel Cabinet Doors & Nickel Finish Hardware
- Solid Wood Veneer
- Window Solar & Privacy Roller Shades
- Leatherette Sofa Bed (3601, 3901 & 4000)
- Leatherette Reclining Theater Seating with Footrests (3401 & 3901)
- Leatherette Dream Dinette® Booth
- Electric Fireplace with Remote Control (3601 & 3901)

INTERIOR OPTION

- Leatherette Sofa Bed (3401 & 3901)

KITCHEN

- 16 cu. ft. Stainless Steel Residential Refrigerator with Ice Maker
- Electric Induction Cooktop
- 1.9 cu. ft. Stainless Steel Over-the-Range Convection Microwave Oven
- Solid Surface Countertops
- Large Double Bowl Stainless Steel Sink with Single Handle Faucet & Pull-Down Sprayer
- Designer Tile Backsplash
- 12-volt Attic Fan with Cover

BEDROOM & BATHROOM

- Denver Mattress® King Size Bed with Tilt-A-View™ Inclining Bed Mechanism
- Bedspread with Throw Pillows
- USB Charging Ports in Nightstands
- Foot Flush Porcelain Toilet
- Oversized Full Height Shower with Glass Door
- Second Full Height Shower with Glass Door (4000)
- Designer Tile Backsplash
- 12-volt Attic Fan with Cover in Bathroom

ENTERTAINMENT

- 49" LED HDTV in Living Area (3401 & 4000)
- 43" LED HDTV in Living Area (3601)
- 43" LED HDTV & 55" LED HDTV in Living Area (3901)
- Yamaha® Sound Bar with Bluetooth®
- Sony® Blu-Ray Player in Living Area & Bedroom
- 32" LED HDTV in Bedroom
- Two (2)15" LED TV/DVD Combo in Bunk Bed Area

- Exterior 39" LED HDTV & Sound Bar w/Bluetooth®
- Cable TV & HDMI Video Ready

ENTERTAINMENT OPTION

- 32" LED HDTV in Cockpit Overhead (3401, 3601 & 4000)

ELECTRICAL & PLUMBING

- Cummins Onan® RV QD 8000 Diesel Generator
- Automatic Generator Start
- 50-amp Shoreline Power Cord
- 2000-watt Inverter/100-amp Converter
- Dual 15,000 BTU Mid-Profile Ducted Air Conditioners with Heat Pumps
- Energy Management System
- Multiplex Wiring Control System
- 100-watt Solar Charging System with Power Controller
- Four (4) Auxiliary House Batteries
- Battery Disconnect Switch
- Exterior GFCI Recept
- 10-gallon DSI Gas/Electric Water Heater
- Water Heater Bypass System
- Enclosed & Heated Holding Tanks
- E-Z Flow Water Panel with Whole-House Water Filtration
- Black Tank Flush System
- Outside Shower
- Stackable Washer & Dryer

IMPORTANT—PLEASE READ: This brochure reflects product design, fabrication, material, components and specifications at the date of printing, which date is disclosed below. Please visit us online at ThorMotorCoach.com or consult with your selling dealership for the latest in standards, options, specification and technical information. Photographs in the brochure may depict optional equipment or may only be available in certain floor plans. Components, appliances and the chassis may have been manufactured in a calendar year before the vehicle's designated model year. All capacities are approximate. The actual length of the vehicle may differ from that indicated in the brochure due to variances in the manufacturing processes and/or installed components. All dry weights are based on standard model features and do not include optional features or equipment. Component part and appliance manufacturers issue limited warranties covering portions of the vehicle not covered under the limited warranty we issue. Copyright Thor Motor Coach, Inc. © OH 09/18/17

YOUR LOCAL THOR MOTOR COACH DEALER



Made to fit.

thormotorcoach.com/aria



P.O. Box 1486, Elkhart, IN 46515 Sales Department: 800.860.5658 Customer Service: 877.855.2867