

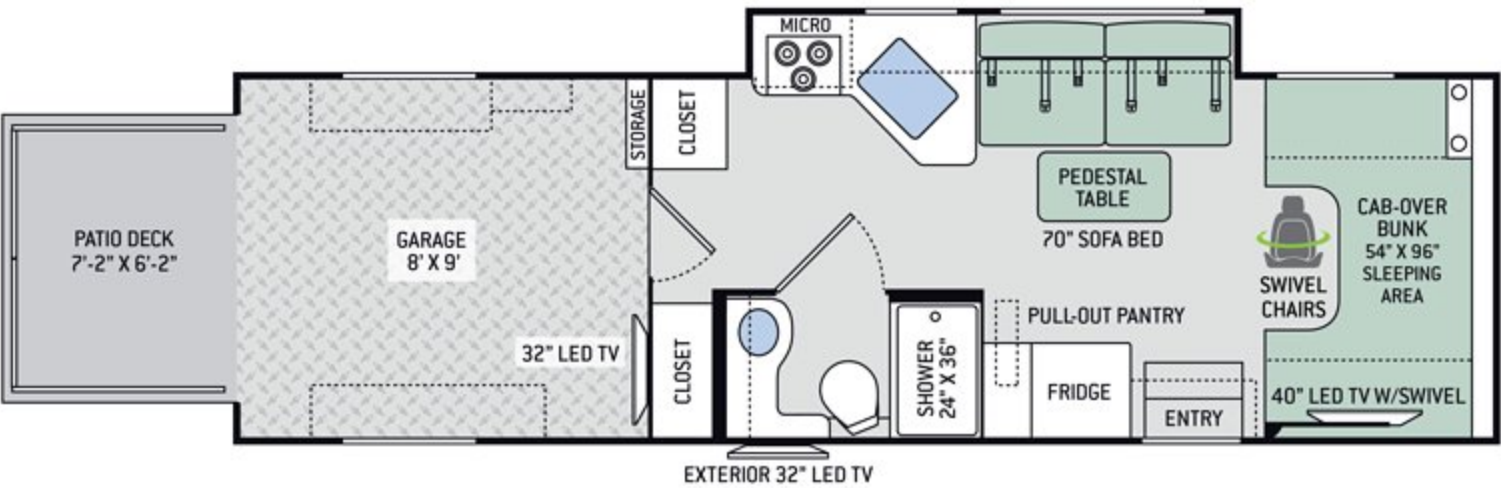


**OUTLAW<sup>®</sup>**  
BY THOR MOTOR COACH

*The Outlaw breaks the rules of traditional motorhomes and is on everyone's "wanted list".*



# Outlaw Class C 29H Floor Plan



CLASS C	29H
Chassis	Ford
Gross Vehicle (GVWR)	14,500
Gross Combined (GCWR)	22,000
Wheel Base	219"
Exterior Length	30'-9"
Exterior Height (w/AC)	10'-10"
Exterior Width (w/o mirrors)	99"
Interior Height (living area)	84"
Awning Size	16'
Fuel (gal)	55
LPG (lbs)	40.9
Fresh/Waste/Gray Water (gal)	40 / 31 / 32
Water Heater (gal)	Instant Tankless
Furnace (BTUs)	19,000
Exterior Storage Capacity (cu. ft.)	17.2 (plus Garage)
Garage Capacity (lbs)	1,500

## Interior Decor



ACES WILD



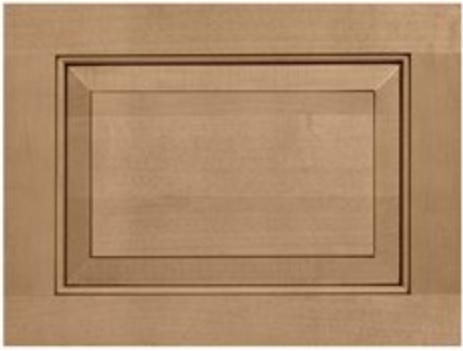
CHAIN REACTION



HEARTBREAKER



BRAZILIAN CHERRY



MALIBU MAPLE



COUNTERTOPS



RESIDENTIAL VINYL FLOORING



# Class C Features

## CONSTRUCTION & EXTERIOR

- Ford® E-Series Chassis
- 6.8L Triton® V10, 305HP & 420 lb.-ft. Torque – TorqShift® 6-Speed Automatic Transmission
- Automatic Leveling Jacks with Touchpad Controls
- Premium One-Piece TPO Roof
- HD-MAX® Exterior with Graphics Package
- Lighted Rotocast Storage Compartments
- Flush Mount Radius Compartment Doors
- Power Patio Awning w/Integrated LED Lighting
- Frameless Windows
- Drop-Down Ramp Door, Patio Deck Railings & Manual Patio Awning
- Air Ventilation Sidewall Vents in Garage
- 8,000-lb. Trailer Hitch with 7-pin Round Connector

## AUTOMOTIVE & COCKPIT

- Touchscreen Dash Radio with Back-Up Monitor
- Heated/Remote Exterior Mirrors with Integrated Side View Cameras
- Swivel Leatherette Captain's Chairs
- Keyless Entry System
- Emergency Engine Start Switch

- Windshield Privacy Curtain
- Valve Stem Extenders
- Aluminum Running Boards
- Stainless Steel Wheel Liners

## INTERIOR

- Rubber Tread Entry Steps with Step Well Light
- Residential Vinyl Flooring
- Ceiling Ducted Air Conditioning System in Living Area
- Hard Vinyl Ceiling in Living Area
- Cab-Over Bunk Ladder
- LED Lighting
- Raised Panel Upper Cabinet Doors with Nickel Finish Hardware
- Laminate Countertops
- Leatherette Side Sleeper Sofa & Removable Pedestal Table
- Window Privacy Roller Shades
- 12-volt Attic Fan with Cover in Cab-Over
- Stainless Steel Storage Cabinet in Garage
- Tread Plate Non-Slip Flooring in Garage
- Tie Down Rings in Garage
- Ceiling Vent in Garage
- Bug Screen Curtain in Garage
- Two Opposing Leatherette Jack-Knife Sofas in Garage

## INTERIOR OPTIONS

- Cab-Over Child Safety Net

## KITCHEN

- 6 cu. ft. Double Door Refrigerator with Smoked Acrylic Panel Inserts
- Recessed 3-Burner Gas Cooktop w/Glass Cover
- Convection Microwave Oven
- Protective Cover & Task Lighting Above Cooktop
- Pop-Up Countertop Outlet
- Decorative Tile Backsplash
- Large Single Bowl Stainless Steel Sink & Single Handle Faucet w/Pull-Down Sprayer
- Silverware Tray
- 12-volt Attic Fan with Cover

## BATHROOM

- Power Vent
- Stainless Steel Sink
- Porcelain Toilet
- Shower with Retractable Door

## ENTERTAINMENT

- 40" LED TV on Manual Swivel & Blu-Ray Player in Cab-Over
- 32" LED TV in Garage

- Exterior 32" LED TV on Manual Swivel
- Bluetooth® Coach Radio System in Garage with Exterior Speakers
- Cable TV & HDMI Ready
- Digital TV Antenna
- Power Charging Center for Electronics

## ELECTRICAL & PLUMBING

- Onan® RV QG 4000 Gas Generator
- 30-amp Shoreline Power Cord
- Automatic Shoreline-to-Generator Transfer Switch
- 13,500 BTU Front Roof Air Conditioner
- 5,000 BTU Air Conditioner in Garage
- Battery Disconnect Switch
- Dual Auxiliary House Batteries
- 1,000-watt Entertainment Inverter
- Exterior LP Connection
- Pre-wired for Solar Charging
- Whole Coach Water Filtration System
- Instant Tankless Water Heater
- Black Tank Flush System
- Holding Tanks with Heat Pads
- Outside Shower
- Systems Control Center
- Rapid Camp® Wireless Control System

# Exterior Graphics



METEOR BLAST (CLASS C)

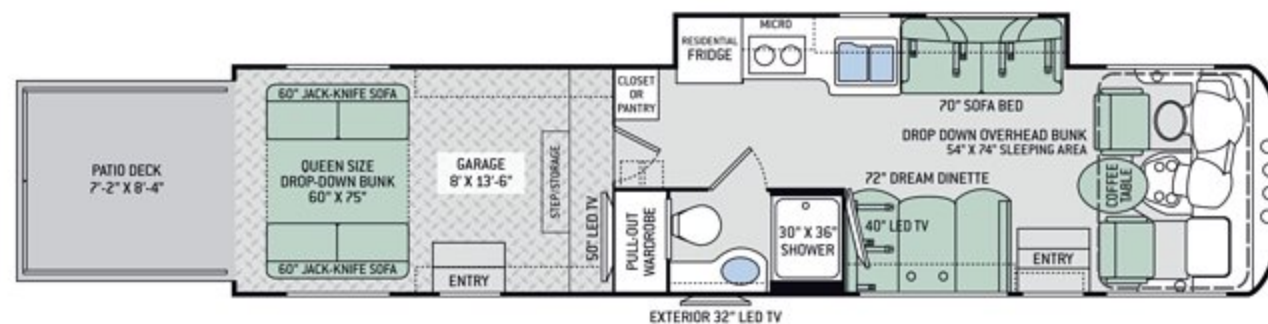


PURE ENERGY (CLASS C)

# Outlaw Class A Floor Plans

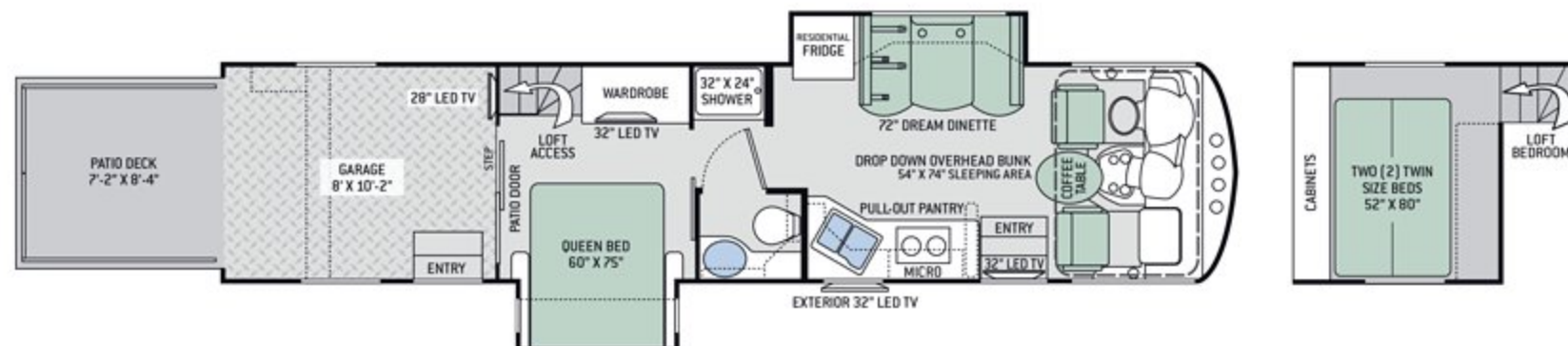
## CLASS A 37BG

Chassis	Ford
Gross Vehicle (GVWR)	26,000
Gross Combined (GCWR)	30,000
Wheel Base	252"
Exterior Length (w/o ladder)	38'-6"
Exterior Height (w/AC)	13'-3"
Exterior Width (w/o mirrors)	101"
Interior Height	80"-97"
Awning Size	10' x 18'
Fuel (gal)	80
LPG (lbs)	105
Fresh/Waste/Gray Water (gal)	100 / 43 / 43
Water Heater (gal)	6
Furnace (BTUs)	35,000
Exterior Storage Capacity (cu. ft.)	117
Garage Capacity (lbs)	2,500



## CLASS A 37RB

Chassis	Ford
Gross Vehicle (GVWR)	26,000
Gross Combined (GCWR)	30,000
Wheel Base	252"
Exterior Length (w/o ladder)	38'-9"
Exterior Height (w/AC)	13'-3"
Exterior Width (w/o mirrors)	101"
Interior Height	80"-97"
Awning Size	9' x 13'
Fuel (gal)	80
LPG (lbs)	105
Fresh/Waste/Gray Water (gal)	100 / 43 / 43
Water Heater (gal)	6
Furnace (BTUs)	35,000
Exterior Storage Capacity (cu. ft.)	127
Garage Capacity (lbs)	2,500



## CLASS A 38RE

Chassis	Ford
Gross Vehicle (GVWR)	26,000
Gross Combined (GCWR)	30,000
Wheel Base	252"
Exterior Length (w/o ladder)	39'-11"
Exterior Height (w/AC)	13'-3"
Exterior Width (w/o mirrors)	101"
Interior Height	80"-104"
Awning Size	19'
Fuel (gal)	80
LPG (lbs)	105
Fresh/Waste/Gray Water (gal)	150 / 40 Front - 29 Rear / 43
Water Heater (gal)	6
Furnace (BTUs)	35,000 F - 20,000 R
Exterior Storage Capacity (cu. ft.)	158
Garage Capacity (lbs)	2,500



Watch our  
in-wall  
**3TRAX™**  
system in  
action.



Interior Decor



ACES WILD



CHAIN REACTION



HEARTBREAKER



COUNTERTOPS



RESIDENTIAL VINYL FLOORING



HIGH-GLOSS GLAZED MILAN (CLASS A)



HIGH-GLOSS GLAZED NEWPORT (CLASS A)



HIGH-GLOSS GLAZED PACIFIC (CLASS A)

Exterior Graphics



GHOST RIDER FULL-BODY PAINT (CLASS A)



ROULETTE BLUE FULL-BODY PAINT (CLASS A)



OVERDRIVE FULL-BODY PAINT (CLASS A)



RENEGADE FULL-BODY PAINT (CLASS A)



# Class A Features

## CONSTRUCTION & EXTERIOR

- Ford® F-53 Chassis - 6.8L Triton® V10 Engine, 320HP, 460 lb.-ft. Torque - TorqShift® 6-Speed Automatic with Overdrive Transmission
- Fiberglass Front Cap
- Full-Body Paint with Gel Coated Sidewalls
- Automatic Leveling Jacks with Touchpad Controls
- Basement Pass-Through Storage
- Rotocast Storage Compartments
- Power Patio Awning with Integrated LED Lighting
- 3TRAX® Wall Slide System (38RE)
- Rear Spot Lights
- Electric Entry Steps
- Frameless Windows
- Pet-Link™ Multi-Purpose Tie-Down
- Remote Fuel Filling Station w/ Pump and Nozzle (37BG & 37RB)
- Drop-Down Zero-G® Ramp Door, Snap-In Patio System & Power Patio Awning (37BG & 37RB)
- Drop-Down Zero-G® Ramp Door, Snap-In Patio System, Staircase to Ground Level & Power Patio Awning (38RE)
- Air Ventilation Sidewall Vents in Garage (37BG & 37RB)
- Rear Power Patio Awning for Patio Deck™
- 8,000-lb. Trailer Hitch with 7-pin Round Connector

## CONSTRUCTION & EXTERIOR OPTION

- Frameless Dual Pane Windows

## AUTOMOTIVE & COCKPIT

- 10" Touchscreen Dash Radio with Bluetooth®
- Back-Up Monitor
- Heated/Remote Exterior Mirrors with Integrated Side View Cameras

- Reclining/Swivel Leatherette Captain's Chairs with Stow-Away Coffee Table
- Emergency Engine Start Switch
- Power Solar & Privacy Shades on Windshield
- Manual Roller Shades on Side Windows
- Dash Fans
- Fog Lights
- 22.5" Tires with Aluminum Wheels
- Valve Stem Extenders on Rear Wheels
- Rear Mud Flap
- Dash Workstation with 110-volt & 12-volt Outlets
- Power Drop-Down Hide-Away Overhead Bunk with Cotton Cloud™ Mattress & Bunk Ladder

## INTERIOR

- Rubber Tread Entry Steps with Step Well Light
- Residential Vinyl Flooring
- 80" Interior Height (At Lowest Point)
- LED Lighting
- Ceiling Ducted Air Conditioning System in Living Area (37RB includes Loft)
- High-Gloss Glazed Cabinetry with Solid Wood Raised Panel Cabinet Doors & Nickel Finish Hardware
- Leatherette Sofa (37BG & 38RE)
- Two (2) Opposing Jack-Knife Sofas in Garage (37BG)
- Leatherette Dream Dinette® Booth
- Electric Fireplace with Remote Control (38RE)
- Window Solar & Privacy Roller Shades in Living Area
- Tread Plate Non-Slip Flooring, Tie Down Rings & Stainless Steel Storage Cabinet in Garage (37BG & 37RB)
- VersaTrack Garage Storage System (37BG)
- 12-volt Attic Fan in Garage (37BG & 37RB)
- Bug Screen Curtain in Garage (37BG & 37RB)

## INTERIOR OPTIONS

- Two (2) Opposing Jack-Knife Sofas in Garage (37RB)

## KITCHEN

- 11 cu. ft. Double Door Residential Refrigerator (37BG & 37RB)
- 22 cu. ft. Stainless Steel Side-by-Side Residential Refrigerator (38RE)
- 2-Burner Electric Induction Cooktop
- 30" Over-the-Range Stainless Steel Convection Microwave Oven
- Solid Surface Countertops & Sink Cover
- Large, Double Bowl Sink & Single Handle Faucet w/Pull-Down Sprayer
- 12-volt Attic Fan (37BG)
- 12-volt Attic Fan with Cover (37RB & 38RE)

## BEDROOM & BATHROOM

- Vaulted Ceiling (38RE)
- Denver Mattress® King Size Bed with Designer Headboard (38RE)
- Denver Mattress® Queen Size Bed (37RB)
- Denver Mattress® Queen Size Drop-Down Bunk in Garage (37BG)
- Two (2) Twin Size Beds in Loft (37RB)
- Window Privacy Roller Shades in Loft (37RB)
- USB Charging Ports in Nightstands (37RB)
- 12-volt Attic Fan in Bathroom
- Foot Flush Porcelain Toilet
- Shower with Glass Door
- Stainless Steel Bathroom Sink

## ENTERTAINMENT

- 40" LED TV in Living Area (37BG & 38RE)
- 32" LED TV in Living Area (37RB)
- Blu-Ray Player in Living Area
- 32" LED TV in Bedroom (37RB & 38RE)

- 50" LED TV in Garage (37BG)
- 28" LED TV in Garage (37RB)
- Exterior 32" LED TV on Manual Swivel
- TV Ready in Loft (37RB)
- Cable TV & HDMI Ready
- Digital TV Antenna
- Bluetooth® Coach Radio System with Exterior Speakers
- Power Charging Center for Electronics (37BG & 38RE)
- Rear Patio Outside Kitchen including 50" LED TV, Bluetooth® Sound Bar, 2.6 cu. ft. Refrigerator, and Sink (38RE)

## ELECTRICAL & PLUMBING

- Onan® RV QG 5500 Gas Generator
- 50-amp Shoreline Power Cord
- Multiplex Wiring Control System
- Dual 13,500 BTU Low Profile Roof Air Conditioners
- 5,000 BTU Air Conditioner in Garage (37RB)
- 6,000 BTU Air Conditioner in Garage (37BG)
- 6,000 BTU Air Conditioner with Remote in Bedroom (38RE)
- Battery Disconnect Switch
- Four (4) Auxiliary House Batteries
- 1800-watt Inverter
- 55-amp Converter
- Exterior LP Connection
- Pre-wired for Solar Charging
- 6-gallon DSI Gas/Electric Water Heater
- Whole Coach Water Filtration System
- Water Heater Bypass System
- Enclosed & Heated Holding Tanks
- Black Tank Flush System
- Washer/Dryer Prep (38RE)
- Outside Shower

**IMPORTANT--PLEASE READ:** This brochure reflects product design, fabrication, material, components and specifications at the date of printing, which date is disclosed below. Please visit us online at [ThorMotorCoach.com](http://ThorMotorCoach.com) or consult with your selling dealership for the latest in standards, options, specification and technical information. Photographs in the brochure may depict optional equipment or may only be available in certain floor plans. Components, appliances and the chassis may have been manufactured in a calendar year before the vehicle's designated model year. All capacities are approximate. The actual length of the vehicle may differ from that indicated in the brochure due to variances in the manufacturing processes and/or installed components. All dry weights are based on standard model features and do not include optional features or equipment. Component part and appliance manufacturers issue limited warranties covering portions of the vehicle not covered under the limited warranty we issue. Copyright Thor Motor Coach, Inc. © OH 05/01/17

YOUR LOCAL THOR MOTOR COACH DEALER



**Made to fit.**

[thormotorcoach.com/outlaw](http://thormotorcoach.com/outlaw)

P.O. Box 1486, Elkhart, IN 46515 Sales Department: 800.860.5658 Customer Service: 877.855.2867

