

# Minnie Winnie

SNEAK PEEK

**WINNEBAGO**



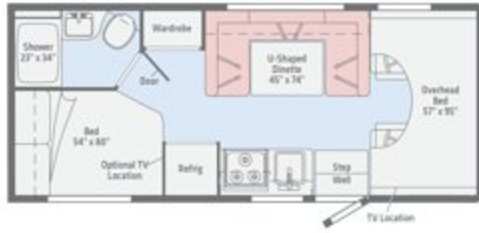
## Ready to go Anywhere Adventure Calls You

Choose your adventure, but first, choose your floorplan. The Winnebago® Minnie Winnie® gives you seven options, including the new 22M, which includes a U-shaped dinette that converts to a comfortable bed. Each floorplan features a private rear bedroom and cabover bunk for added sleeping flexibility, plus a large rear trunk for your gear. Make it your own with three new interior decor options and stylish, contemporary exteriors. Add in a long list of standard features, a variety of available upgrade packages, and Winnebago's legendary build quality, and you'll see why the Minnie Winnie is an outstanding value for families of all sizes.

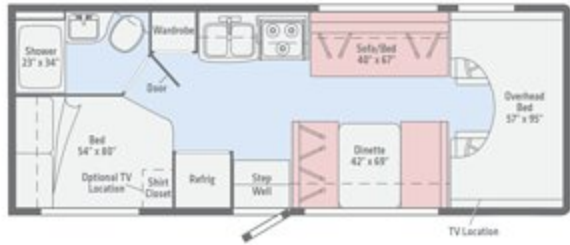
Dimensions shown are for sleeping space only and may vary due to styling differences. Dashed lines denote overhead storage areas.



**NEW**  
**22M**



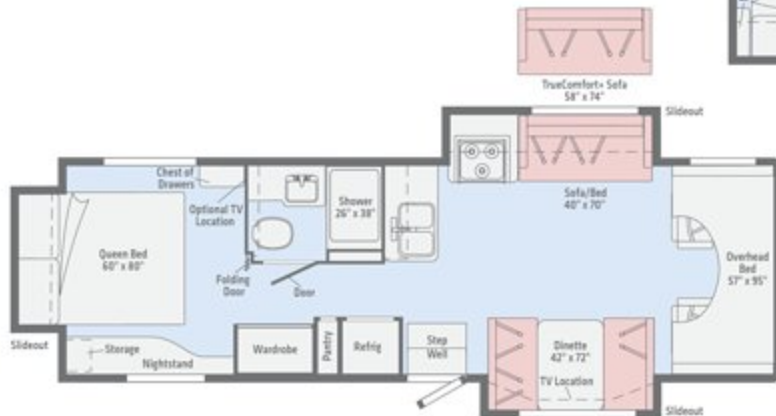
**22R**



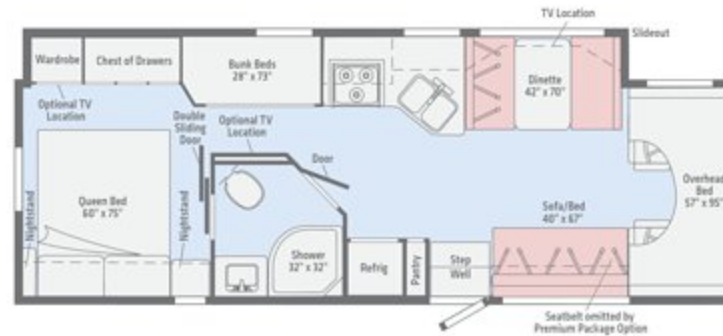
**25B**



**26A**



**31D**



**31G**



**31K**



**Weights & Measures**

|  | <b>22M</b>                                 | <b>22R</b>                                 | <b>25B</b>                                 | <b>26A</b>          | <b>31D</b>          | <b>31G</b>          | <b>31K</b>          |
|--|--|--|--|---------------------|---------------------|---------------------|---------------------|
| <b>Length</b>  | 24'2"                                      | 23'10"                                     | 26'2"                                      | 27'1"               | 32'9"               | 32'9"               | 32'9"               |
| <b>Exterior Height<sup>1</sup></b>                           | 11'  | 11'  | 11'  | 11'1"               | 11'1"               | 11'1"               | 11'1"               |
| <b>Exterior Width<sup>2</sup></b>                            | 8'5.5"                                     | 8'5.5"                                     | 8'5.5"                                     | 8'5.5"              | 8'5.5"              | 8'5.5"              | 8'5.5"              |
| <b>Exterior Storage<sup>3</sup> (cu. ft.)</b>                | 44.5                                       | 60.4                                       | 73.1                                       | 45                  | 95                  | 80.7                | 108.3               |
| <b>Awning Length</b>   | 14'  | 14'  | 17'  | 18'                 | 17'                 | 19'                 | 20'                 |
| <b>Interior Height</b>                                       | 6'10"/6'5.5"***                            | 6'10"                                      | 6'10"                                      | 6'10"/6'5.5"***     | 6'10"/6'5.5"***     | 6'10"/6'5.5"***     | 6'10"/6'5.5"***     |
| <b>Interior Width</b>  | 8'   | 8'   | 8'   | 8'                  | 8'                  | 8'                  | 8'                  |
| <b>Freshwater Tank Capacity<sup>4</sup> (gal.)</b>           | 40   | 40   | 40   | 40                  | 44                  | 44                  | 44                  |
| <b>Water Heater Capacity (gal.)</b>                          | 6  | 6  | 6  | 6                   | 6                   | 6                   | 6                   |
| <b>Holding Tank Capacity - Black/Gray<sup>4</sup> (gal.)</b> | 40/45                                      | 21/24                                      | 21/26                                      | 35/39               | 37/30               | 37/57               | 30/30               |
| <b>LP Capacity<sup>5</sup> (gal.)</b>                        | 18   | 18   | 18   | 18                  | 18                  | 18                  | 18                  |
| <b>Fuel Capacity (gal.)</b>                                  | 55   | 55   | 55   | 55                  | 55                  | 55                  | 55                  |
| <b>GCWR<sup>6</sup> (lbs.)</b>                               | 18,500 <sup>A</sup><br>22,000 <sup>B</sup> | 18,500 <sup>A</sup><br>22,000 <sup>B</sup> | 18,500 <sup>A</sup><br>22,000 <sup>B</sup> | 22,000 <sup>B</sup> | 22,000 <sup>B</sup> | 22,000 <sup>B</sup> | 22,000 <sup>B</sup> |
| <b>GVWR (lbs.)</b>   | 11,500 <sup>A</sup><br>14,500 <sup>B</sup> | 11,500 <sup>A</sup><br>14,500 <sup>B</sup> | 11,500 <sup>A</sup><br>14,500 <sup>B</sup> | 14,500 <sup>B</sup> | 14,500 <sup>B</sup> | 14,500 <sup>B</sup> | 14,500 <sup>B</sup> |
| <b>GAWR - Front (lbs.)</b>                                   | 4,600 <sup>A</sup><br>5,000 <sup>B</sup>   | 4,600 <sup>A</sup><br>5,000 <sup>B</sup>   | 4,600 <sup>A</sup><br>5,000 <sup>B</sup>   | 5,000 <sup>B</sup>  | 5,000 <sup>B</sup>  | 5,000 <sup>B</sup>  | 5,000 <sup>B</sup>  |
| <b>GAWR - Rear (lbs.)</b>                                    | 7,800 <sup>A</sup><br>9,600 <sup>B</sup>   | 7,800 <sup>A</sup><br>9,600 <sup>B</sup>   | 7,800 <sup>A</sup><br>9,600 <sup>B</sup>   | 9,600 <sup>B</sup>  | 9,600 <sup>B</sup>  | 9,600 <sup>B</sup>  | 9,600 <sup>B</sup>  |
| <b>Wheelbase</b>   | 158"                                       | 158"                                       | 182"                                       | 190"                | 220"                | 220"                | 220"                |

\*\*\* Rear of Coach A Ford E350 Chassis B Ford E450 Chassis

- The height of each model is measured to the top of the tallest standard feature and is based on the curb weight of a typically equipped unit. The actual height of your vehicle may vary by several inches depending on chassis or equipment variations. Please contact your dealer for further information.
- Floorplans feature a wide-body design - over 96". In making your purchase decision, you should be aware that some states restrict access on some or all state roads to 96" in body width. Before making your purchase decision, you should confirm the road usage laws in the states of interest to you.
- The load capacity of your motorhome is designated by weight, not by volume, so you cannot necessarily use all available space when loading your motorhome.
- Capacities are based on measurements prior to tank installation. Slight capacity variations can result due to installation applications.

<sup>5</sup> Capacities shown are tank manufacturer's listed water capacity (W.C.). Actual filled LP capacity is 80% of listing due to overfilling prevention device on tank.

<sup>6</sup> Actual towing capacity is dependent on your particular loading and towing circumstances which includes the GVWR, GAWR, and GCWR, as well as adequate trailer brakes. Please refer to the Operator's Manual of your vehicle for further towing information.

Not all items available in combination. See dealer for details.

Winnebago's® continuing program of product improvement makes specifications, equipment, model availability, and prices subject to change without notice. Published content reflects the most current product information at time of printing. Please consult your dealer for individual vehicle features and specifications.

Visit us on [WinnebagoInd.com](http://WinnebagoInd.com).