

AMERICAN DREAM

TOP FEATURES FOR 2019

- SELECT DRIVE STEERING ASSIST
- 450 HP W/SIDE RADIATOR — 42'
- 605 HP W/SIDE RADIATOR — 45'
- 15,000LBS HITCH RECEIVER
- ULTRA STEER WITH V-RIDE
- INDEPENDENT FRONT SUSPENSION
- AQUA-HOT 450D W/ENGINE PREHEAT
- REAR DUCTED AQUA HOT EXHAUST
- AURORA DASH CLIMATE CONTROL (23K BTU)
- VILLA SIX-WAY POWER, DRIVER/PASSENGER SEATING WITH LUMBAR SUPPORT, POWER FOOTRESTS & INTEGRATED SEATBELTS
- HEATED TILE FLOORING THROUGHOUT
- FULL TILE SHOWER W/TEAK BENCH
- INVERTED THREE PIECE MIRRORS W/INTEGRATED SIDE CAMERAS
- 2800W PURE SINE WAVE INVERTER
- 10KW GENERATOR WITH POWER SLIDE
- LOPRO ROOF A/C'S WITH CONDENSATION LINES (3)



42B

WHEELBASE (INCHES)	302"
OVERALL LENGTH	42'-11.5"
OVERALL HEIGHT (WITH AC)	13'-1.5"
OVERALL WIDTH (MAXIMUM)	102"
INTERIOR HEIGHT (MAXIMUM)	84"
INTERIOR WIDTH (MAXIMUM)	96"
FRESH WATER HOLDING TANK (GAL)	100
GREY WATER HOLDING TANK (GAL)	60
BLACK WATER HOLDING TANK (GAL)	40



42Q

WHEELBASE (INCHES)	302"
OVERALL LENGTH	42'-11.5"
OVERALL HEIGHT (WITH AC)	13'-1.5"
OVERALL WIDTH (MAXIMUM)	102"
INTERIOR HEIGHT (MAXIMUM)	84"
INTERIOR WIDTH (MAXIMUM)	96"
FRESH WATER HOLDING TANK (GAL)	100
GREY WATER HOLDING TANK (GAL)	60
BLACK WATER HOLDING TANK (GAL)	40

CHASSIS

- Custom-built Liberty Bridge™ on Freightliner® chassis
- 315R Tires – front, rear, & tag
- All-wheel disc brakes
- Dual leveling; hydraulic & valid air

INTERIOR

- Contemporary ceiling plenum w/stylish automotive vents
- Bedroom TV – 43" 4K UHD
- Living Area TV – 49" 4K UHD
- Firefly multi-plex system with Vega touchscreen
- Recess cooktop w/solid surface covers
- Fully enclosed roof ducting
- Security safe w/keypad
- Residential style refrigerator w/in-door ice/water dispenser
- Articulating bed w/deep overhead cabinets
- RGB undercoach lighting

EXTERIOR

- Front stainless steel accents with backlit Dream logo
- Under slide-box LED lighting
- Avionics entry door w/air latches
- Bus-style fully enclosed entryway
- AGM batteries (8) - standard



42S

WHEELBASE (INCHES)	302"
OVERALL LENGTH	42'-11.5"
OVERALL HEIGHT (WITH AC)	13'-1.5"
OVERALL WIDTH (MAXIMUM)	102"
INTERIOR HEIGHT (MAXIMUM)	84"
INTERIOR WIDTH (MAXIMUM)	96"
FRESH WATER HOLDING TANK (GAL)	100
GREY WATER HOLDING TANK (GAL)	60
BLACK WATER HOLDING TANK (GAL)	40



45A

WHEELBASE (INCHES)	302"
OVERALL LENGTH	44'-11.5"
OVERALL HEIGHT (WITH AC)	13'-1.5"
OVERALL WIDTH (MAXIMUM)	102"
INTERIOR HEIGHT (MAXIMUM)	84"
INTERIOR WIDTH (MAXIMUM)	96"
FRESH WATER HOLDING TANK (GAL)	100
GREY WATER HOLDING TANK (GAL)	60
BLACK WATER HOLDING TANK (GAL)	40

AVAILABLE OPTIONS:

- | | | |
|--|---|--|
| 083 - TV W/FIREPLACE & RECLINER (45A) | 194 - THEATER SEATING | 563 - TECHNOLOGY PACKAGE (WIFI EXTENDER, CELL BOOSTER, 265W SOLAR PANEL, MOBILE EYE) |
| 087 - FRONT OVERHEAD TV 43" 4K UHD | 256 - ROOF MOUNT PATIO AWNING 2ND D/S (16' 42B/42Q/42S 18' 45A) | 641 - EMERGENCY EXIT DOOR |
| 101 - SATELLITE DISH TRAV'LER DISH NETWORK | 297 - LITHIUM BATTERY PACKAGE | 965 - 1ST FULL BAY 90" SLIDE TRAY |
| 102 - SATELLITE DISH TRAV'LER DIRECT TV | 400 - CSA STANDARDS | 967 - 2ND FULL BAY 90" SLIDE TRAY |
| | 560 - VIP DELIVERY | |

AMERICAN DREAM

TOP FEATURES FOR 2019

- SELECT DRIVE STEERING ASSIST
- 450 HP W/SIDE RADIATOR – 42'
- 605 HP W/SIDE RADIATOR – 45'
- 15,000LBS HITCH RECEIVER
- ULTRA STEER WITH V-RIDE
- INDEPENDENT FRONT SUSPENSION
- AQUA-HOT 450D W/ENGINE PREHEAT
- REAR DUCTED AQUA HOT EXHAUST
- AURORA DASH CLIMATE CONTROL (23K BTU)
- VILLA SIX-WAY POWER, DRIVER/PASSENGER SEATING WITH LUMBAR SUPPORT, POWER FOOTRESTS & INTEGRATED SEATBELTS
- HEATED TILE FLOORING THROUGHOUT
- FULL TILE SHOWER W/TEAK BENCH
- INVERTED THREE PIECE MIRRORS W/INTEGRATED SIDE CAMERAS
- 2800W PURE SINE WAVE INVERTER
- 10KW GENERATOR WITH POWER SLIDE
- LOPRO ROOF A/C'S WITH CONDENSATION LINES (3)

42B

WHEELBASE (INCHES)	302"
OVERALL LENGTH	42'-11.5"
OVERALL HEIGHT (WITH AC)	13'-1.5"
OVERALL WIDTH (MAXIMUM)	102"
INTERIOR HEIGHT (MAXIMUM)	84"
INTERIOR WIDTH (MAXIMUM)	96"
FRESH WATER HOLDING TANK (GAL)	100
GREY WATER HOLDING TANK (GAL)	60
BLACK WATER HOLDING TANK (GAL)	40

42Q

WHEELBASE (INCHES)	302"
OVERALL LENGTH	42'-11.5"
OVERALL HEIGHT (WITH AC)	13'-1.5"
OVERALL WIDTH (MAXIMUM)	102"
INTERIOR HEIGHT (MAXIMUM)	84"
INTERIOR WIDTH (MAXIMUM)	96"
FRESH WATER HOLDING TANK (GAL)	100
GREY WATER HOLDING TANK (GAL)	60
BLACK WATER HOLDING TANK (GAL)	40

CHASSIS

- Custom-built Liberty Bridge™ on Freightliner® chassis
- 315R Tires – front, rear, & tag
- All-wheel disc brakes
- Dual leveling: hydraulic & valid air

INTERIOR

- Contemporary ceiling plenum w/stylish automotive vents
- Bedroom TV – 43" 4K UHD
- Living Area TV – 49" 4K UHD
- Firefly multi-plex system with Vega touchscreen
- Recess cooktop w/solid surface covers
- Fully enclosed roof ducting
- Security safe w/keypad
- Residential style refrigerator w/in-door ice/water dispenser
- Articulating bed w/deep overhead cabinets
- RGB undercoach lighting

EXTERIOR

- Front stainless steel accents with backlit Dream logo
- Under slide-box LED lighting
- Avionics entry door w/air latches
- Bus-style fully enclosed entryway
- AGM batteries (8) - standard

42S

WHEELBASE (INCHES)	302"
OVERALL LENGTH	42'-11.5"
OVERALL HEIGHT (WITH AC)	13'-1.5"
OVERALL WIDTH (MAXIMUM)	102"
INTERIOR HEIGHT (MAXIMUM)	84"
INTERIOR WIDTH (MAXIMUM)	96"
FRESH WATER HOLDING TANK (GAL)	100
GREY WATER HOLDING TANK (GAL)	60
BLACK WATER HOLDING TANK (GAL)	40

45A

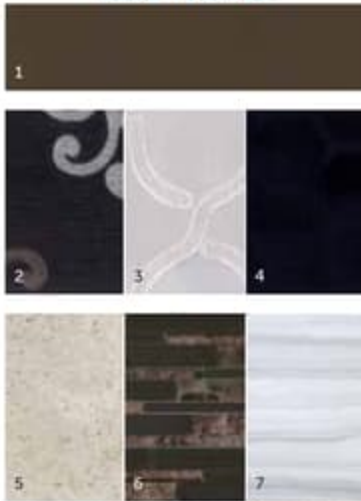
WHEELBASE (INCHES)	302"
OVERALL LENGTH	44'-11.5"
OVERALL HEIGHT (WITH AC)	13'-1.5"
OVERALL WIDTH (MAXIMUM)	102"
INTERIOR HEIGHT (MAXIMUM)	84"
INTERIOR WIDTH (MAXIMUM)	96"
FRESH WATER HOLDING TANK (GAL)	100
GREY WATER HOLDING TANK (GAL)	60
BLACK WATER HOLDING TANK (GAL)	40

AVAILABLE OPTIONS:

- | | | |
|--|---|--|
| 083 - TV W/FIREPLACE & RECLINER (45A) | 194 - THEATER SEATING | 563 - TECHNOLOGY PACKAGE (WIFI EXTENDER, CELL BOOSTER, 265W SOLAR PANEL, MOBILE EYE) |
| 087 - FRONT OVERHEAD TV 43" 4K UHD | 256 - ROOF MOUNT PATIO AWNING 2ND D/S (16' 42B/42Q/42S 18' 45A) | 641 - EMERGENCY EXIT DOOR |
| 101 - SATELLITE DISH TRAV'LER DISH NETWORK | 297 - LITHIUM BATTERY PACKAGE | 965 - 1ST FULL BAY 90° SLIDE TRAY |
| 102 - SATELLITE DISH TRAV'LER DIRECT TV | 400 - CSA STANDARDS | 967 - 2ND FULL BAY 90° SLIDE TRAY |
| | 560 - VIP DELIVERY | |

INTERIOR DECOR

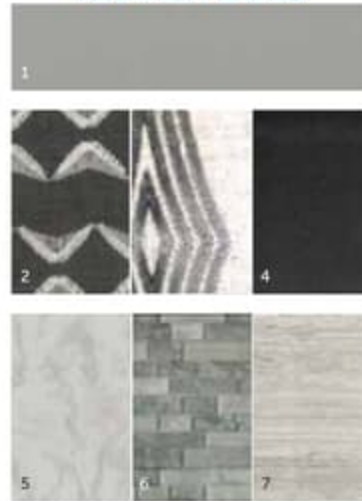
LUXE TRUFFLE



MOON HAZE



ROCKPORT GREIGE



CABINETS



1 FURNITURE | 2 COUNTERTOP | 3 BEDSPREAD | 4 BED ACCENT | 5 COUNTERTOP | 6 BACKSPLASH | 7 FLOORING

CHASSIS

MODEL	42B	42Q	42S	45A
Wheelbase (inches)	302"	302"	302"	302"
Front GAWR (lbs)	17,000	17,000	17,000	17,000
Rear GAWR (lbs)	20,000	20,000	20,000	20,000
Tag Axle GAWR Ultra Steer B-Series (lbs)	10,000	10,000	10,000	14,000
GCWR (lbs)	62,000	62,000	62,000	66,000
Hitch Rating Weight (lbs)	15,000	15,000	15,000	15,000
Tongue Weight (lbs)	1,500	1,500	1,500	1,500
Fuel Capacity (gal)	150	150	150	150

DIMENSIONS AND CAPACITIES

MODEL	42B	42Q	42S	45A
Overall Length	42' 11.5"	42' 11.5"	42' 11.5"	44' 11.5"
Overall Height (suspension inflated)	13' 1.5"	13' 1.5"	13' 1.5"	13' 1.5"
Overall Width (maximum)	102"	102"	102"	102"
Interior Height (maximum)	84"	84"	84"	84"
Interior Width (maximum)	96"	96"	96"	96"
Patio Awning Width	18' 0"	18' 0"	18' 0"	18' 0"
Interior Storage (cu. ft.)	235	233	236	212
Exterior Storage (cu. ft.)	131	131	131	141
Fresh Water Holding Tank (gal)	100	100	100	100
Grey Water Holding Tank (gal)	60	60	60	60
Black Water Holding Tank (gal)	40	40	40	40

CUSTOM PAINT



IMPERIAL TOPAZ



INSPIRATION BLUE



VINTAGE BORDOUX



VOLCANO GRAY

FREIGHTLINER ISL 450HP (42B | 42Q | 42S)

Model: 450XCM
 Engine: Cummins ISL Turbocharged
 Transmission: Allison® MH, 3,000, 6-Speed Automatic transmission w/Electronic Shift Control
 Alternator: Delco Remy 170 Amp
 Torque: 1,250 lb.-ft. @ 1,400 RPM
 Horsepower: 450HP

FREIGHTLINER ISX 605HP (45A)

Model: SL605
 Engine: Cummins ISX Turbocharged
 Transmission: Allison® MH, 4,000, 6-Speed Automatic transmission w/Electronic Shift Control
 Alternator: Delco Remy 240 Amp
 Torque: 1,950 lb.-ft. @ 1,400 RPM
 Horsepower: 605HP

AMERICANCOACH.COM

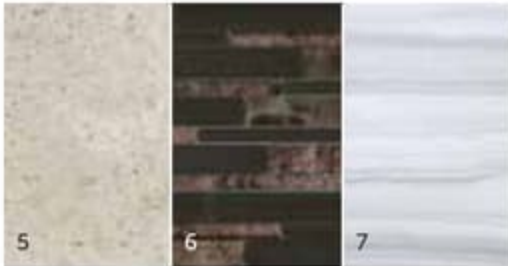
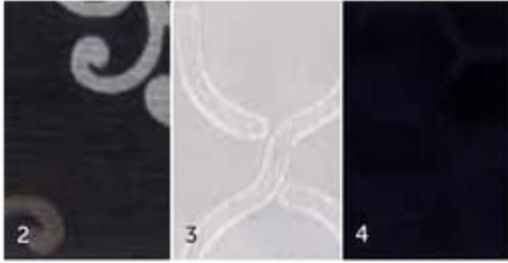


CONTACT US: To locate a dealer near you, visit our website at www.americancoach.com or call 1-877-252-4666. We can also be contacted at American Coach Customer Relations, P.O. Box 1007, Decatur, IN 46733.

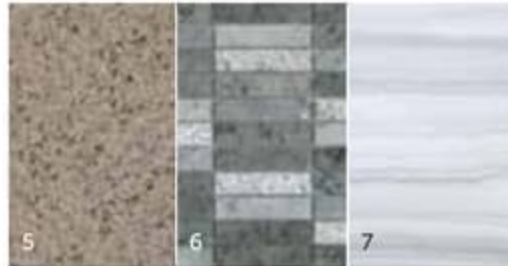
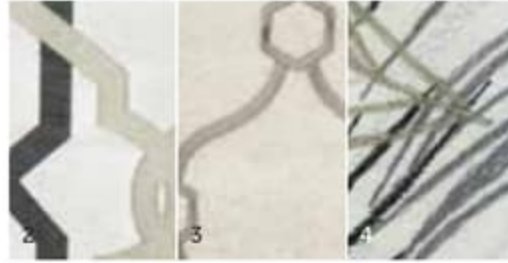
Product information, photography and illustrations included in this publication were as accurate as possible at the time of printing. For further product information and changes, please visit our website at www.americancoach.com or contact your local American Coach dealer. Prices, materials, design and specifications are subject to change without notice. All weights, fuel, liquid capacities and dimensions are approximate. American Coach has designed its recreational vehicles to provide a variety of uses for its customers. Each vehicle features optimal seating, sleeping, storage and fluid capacities. The user is responsible for selecting the proper combination of loads (i.e., occupants, equipment, fluids, cargo, etc.) to ensure that the vehicle's capacities are not exceeded.

INTERIOR DECOR

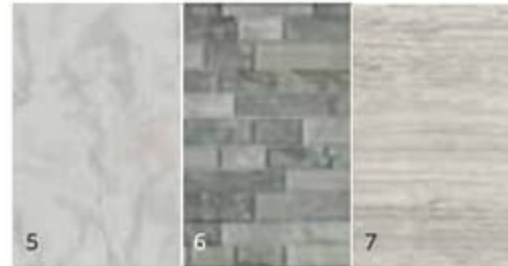
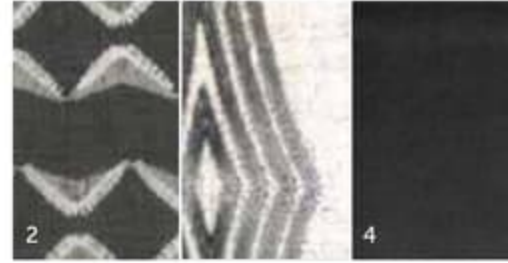
LUXE TRUFFLE



MOON HAZE



ROCKPORT GREIGE



CABINETS



1 FURNITURE | 2 COUNTERTOP | 3 BEDSPREAD | 4 BED ACCENT | 5 COUNTERTOP | 6 BACKSPLASH | 7 FLOORING

CHASSIS

MODEL	42B	42Q	42S	45A
Wheelbase (inches)	302"	302"	302"	302"
Front GAWR (lbs)	17,000	17,000	17,000	17,000
Rear GAWR (lbs)	20,000	20,000	20,000	20,000
Tag Axle GAWR Ultra Steer B-Series (lbs)	10,000	10,000	10,000	14,000
GCWR (lbs)	62,000	62,000	62,000	66,000
Hitch Rating Weight (lbs)	15,000	15,000	15,000	15,000
Tongue Weight (lbs)	1,500	1,500	1,500	1,500
Fuel Capacity (gal)	150	150	150	150

DIMENSIONS AND CAPACITIES

MODEL	42B	42Q	42S	45A
Overall Length	42' 11.5"	42' 11.5"	42' 11.5"	44' 11.5"
Overall Height (suspension inflated)	13' 1.5"	13' 1.5"	13' 1.5"	13' 1.5"
Overall Width (maximum)	102"	102"	102"	102"
Interior Height (maximum)	84"	84"	84"	84"
Interior Width (maximum)	96"	96"	96"	96"
Patio Awning Width	18' 0"	18' 0"	18' 0"	18' 0"
Interior Storage (cu. ft.)	235	233	236	212
Exterior Storage (cu. ft.)	131	131	131	141
Fresh Water Holding Tank (gal)	100	100	100	100
Grey Water Holding Tank (gal)	60	60	60	60
Black Water Holding Tank (gal)	40	40	40	40

CUSTOM PAINT



IMPERIAL TOPAZ



INSPIRATION BLUE



VINTAGE BORDOUX



VOLCANO GRAY

FREIGHTLINER ISL 450HP (42B | 42Q | 42S)

Model: 450XCM
 Engine: Cummins ISL Turbocharged
 Transmission: Allison® MH, 3,000, 6-Speed Automatic transmission w/Electronic Shift Control
 Alternator: Delco Remy 170 Amp
 Torque: 1,250 lb.-ft. @ 1,400 RPM
 Horsepower: 450HP

FREIGHTLINER ISX 605HP (45A)

Model: SL605
 Engine: Cummins ISX Turbocharged
 Transmission: Allison® MH, 4,000, 6-Speed Automatic transmission w/Electronic Shift Control
 Alternator: Delco Remy 240 Amp
 Torque: 1,950 lb.-ft. @ 1,400 RPM
 Horsepower: 605HP



CONTACT US: To locate a dealer near you, visit our website at www.americancoach.com or call 1-877-252-4666. We can also be contacted at American Coach Customer Relations, P.O. Box 1007, Decatur, IN 46733.

Product information, photography and illustrations included in this publication were as accurate as possible at the time of printing. For further product information and changes, please visit our website at www.americancoach.com or contact your local American Coach dealer. Prices, materials, design and specifications are subject to change without notice. All weights, fuel, liquid capacities and dimensions are approximate. American Coach has designed its recreational vehicles to provide a variety of uses for its customers. Each vehicle features optimal seating, sleeping, storage and fluid capacities. The user is responsible for selecting the proper combination of loads (i.e., occupants; equipment, fluids, cargo, etc.) to ensure that the vehicle's capacities are not exceeded.