

MIRADA

Select
BY COACHMEN

MIRADA
Select
BY COACHMEN



CoachmenRV.com

THE COACHMEN ADVANTAGE

What is the Coachmen advantage? It's the collection of unique features offered in a Coachmen motorhome to ensure a smoother ride, a better camping experience, and a motorhome that will last for years.

1. NOBLE SELECT™

Protected by a three-year warranty, these sidewalls have a high-gloss gelcoat finish to prevent fading. They are also 20% lighter than wood substrate sidewalls, provide more occupant cargo carrying capacity, and offer three times the insulation against extreme climates.

2. AZDEL™ COMPOSITE

Most manufacturers use wood sidewalls that can expand, swell, and eventually mold. We use Azdel. It's impervious to water, won't rot or mold, and, with less than a 1% chance of delaminating, it ensures the long-term integrity of the sidewalls.

3. REINFORCED LAMINATION

We vacuum bond and pinch roll every sidewall and roof, then perform a pull adhesion test. Most manufacturers just do one process or the other, but by doing both we improve the strength and longevity of the sidewalls.

4. ELONGATED WHEELBASE

We offer longer wheelbases than other motorhome manufacturers because that means superior weight distribution. The result? Better handling and a smoother ride that results in less driver fatigue.

5. SIGHT RITE DASH™

Our dashes are angled 20 degrees forward. This increases the line of sight for the driver, and offers the best road visibility on the market.

6. EVEN COOL DUCT™

Our patented duct system evenly disperses air through the whole coach. And we use Amaco ducting instead of Styrofoam because it's antimicrobial, preventing the growth of bacteria and ensuring a cool, clean coach in even scorching heat.

7. DIGITAL OWNER'S MANUAL

Our owner's manuals are easy to access through the Coachmen website or our free app. Supplemented with videos, PowerPoints, and more, it's got all you need to know about your coach.

EXTERIOR COLOR OPTIONS



Full Body Paint - Avalanche



Full Body Paint - Bordeaux



Full Body Paint - Bourbon

INTERIOR DECOR COLOR SELECTIONS



Champagne



Prosecco

INTERIOR WOOD COLOR SELECTIONS



Slate Cherry



Driftwood

BE THE ENVY OF THE INTERSTATE.

MIRADA SELECT DELIVERS THE ELEGANCE AND LOOK OF A LUXURY MOTORHOME AT A PRICE THAT WILL MAKE YOU BEAM WITH PRIDE.



Prepare meals in a stylish kitchen that includes a solid-surface countertop, stainless steel residential appliances and a subway tile backsplash. When you're ready to take the party outside, the outdoor entertainment system will be a big hit. When not entertaining friends, stay connected with them from the dash computer workstation, complete with 12V, 110V, and USB outlets. There's even room for the kids to sleep over with the optional drop-down cabover bunk (37RB).



Rear storage compartments mean you'll never have to worry about having enough space for gear.

A spacious pass-through basement is perfect for stowing large items.

The super durable Tread Lite™ Power Step makes it easy to board and exit safely.

Heated remote exterior mirrors make sure winter ice melts away fast.



Photography features the Mirada Select 37RB floorplan with Prosecco decor and Driftwood cabinets.



The comfy leatherette dinette converts to additional sleeping space.

Using every inch of Mirada Select's floorplan means more storage for you — including a pantry that converts into an area for a stackable washer/dryer.

Mirada Select's 37TB floorplan is one of few motorhomes to include two full bathrooms.

The Coach-Pap™ Station allows for storage of CPAP machines and other electronics, located in the cabinet above the bed. The bedroom also features a spacious wardrobe, an LED TV and side tables to keep clutter at bay.

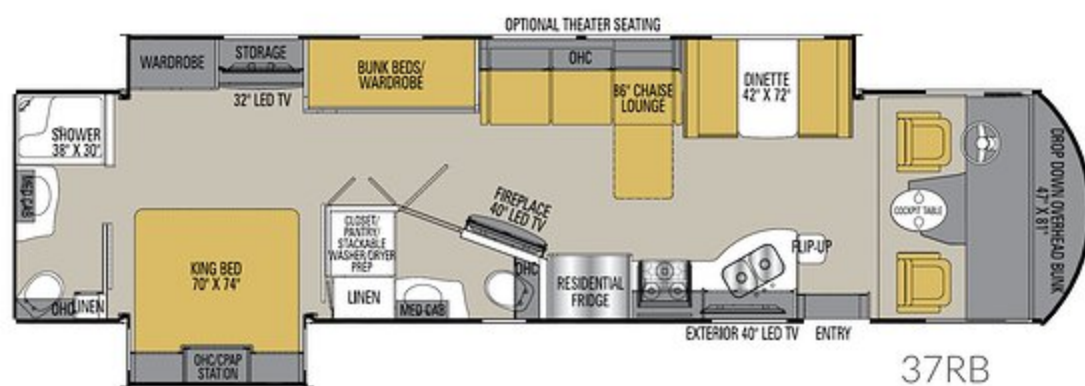
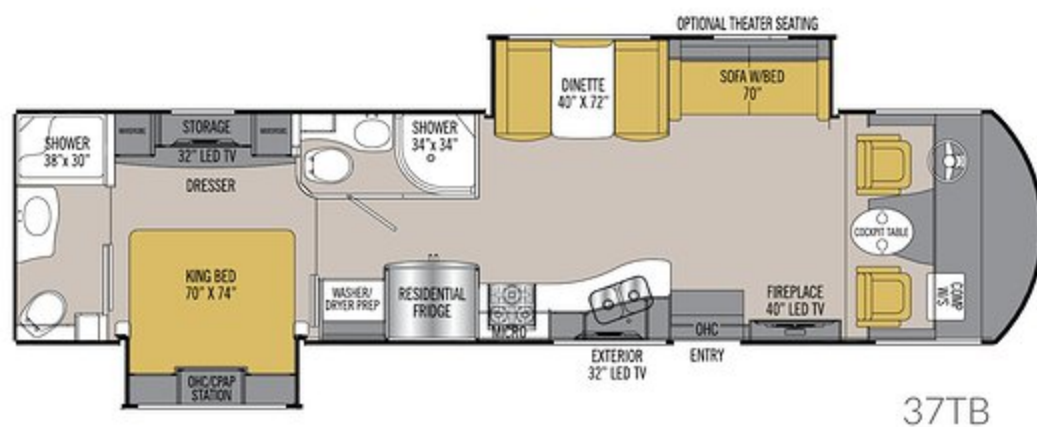
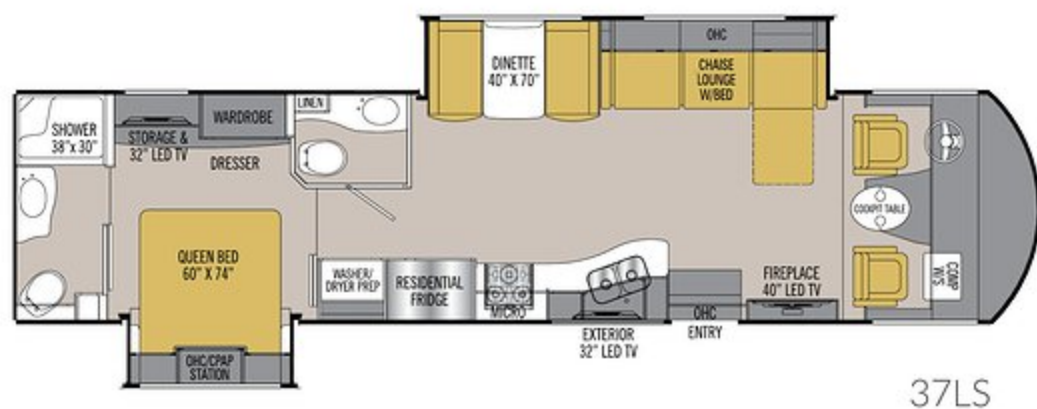


You'll find even more sleeping capacity in the spacious bunk beds, hidden behind beautiful cabinet doors. These also convert into a wardrobe.

Mirada Select's living area has plenty of seating for family and guests. Stretch out on the roomy chaise lounge (37RB and 37LS) while enjoying the electric fireplace and 40" LED TV.

FLOORPLANS

Mirada Select is available in three floorplan options, so you can choose the one that best suits your preferences.



STANDARD FEATURES

INTERIOR APPOINTMENTS

Premium Linoleum Throughout
Brushed Nickel Hardware
Hardwood Cabinet Doors
Frameless Tinted Windows
Reclining/Swivel Passenger Seat
6-Way Power Drivers Seat
Visionary Sofa Hide-A-Bed
Dream Dinette
Solar Privacy Shades Throughout
Self Closing Ball Bearing Drawer Guides
Throughout
Chaise Lounge Sofa (37LS, 37RB)

INTERIOR EQUIPMENT

Wi Fi Ranger
Radio AM/FM/CD with Bluetooth
Cable TV Jack
LP Leak Alarm and Smoke Detector
Carbon Monoxide Detector
Fire Extinguisher
King Jack TV Antenna
40" LED TV Coach
Pre-Wired for Satellite Dish and Blu-ray Players
Electric Fireplace
Sound Bar Entertainment System

GALLEY

Solid Surface Countertop
Single Lever High Kitchen Faucet with Sprayer
Stainless Steel Double Bowl Kitchen Sink
Stainless Steel Convection OTR Microwave
Stainless Steel Cooktop
Stainless Steel Residential Refrigerator
3-Speed Fantastic Power Fan
Solid Surface Range and Sink Cover
Glass Tile Backsplash
Pop-up Recept with USB Ports

BATH AND WATER

Porcelain Toilet with Foot Flush and Sprayer*
Fiberglass Shower*
Glass Shower Door*
Power Bath Vent*
10-Gallon Gas/Electric E.I. Water Heater*
Demand Water Pump*
Skylight Over the Shower*
Whole Coach Water Filter (EXC. CSA)*
Stackable Washer/Dryer Prep

SLEEPING

Queen Bed 60W X 74L (37LS)
King Bed 70W X 74L (37TB, 37RB)
Upgrade Mattress
Bedspread
32" LED TV bedroom
Designer Headboard (n/a 37LS)
Bedroom Radio AM/FM/Bluetooth
with Outside Speakers
Charging Station for Electronic Devices
Coach-Pap™ Station

ELECTRICAL/HEATING/AC

LED Interior Ceiling Lighting
30' 50-Amp Power Cord
55-Amp, 110/12-Volt Power Converter
GFI Circuit
Outside Receptacle (DS)
Emergency Start Switch
Lighted Trunk Storage Boxes
Exterior LED Strip Light
35,000 BTU E.I. Furnace
13,500 BTU Ducted Roof A/C
2nd 13,500 BTU Roof A/C
Dual Six Volt Coach Batteries
5.5KW Onan Generator
Coach Command Center
Auto Generator Start
Automatic Transfer Switch
1000 Watt Inverter
Solar Panel Hookup

AUTOMOTIVE/EXTERIOR

Tilt Steering Wheel
Cruise Control
Intermittent Wipers
22.5 Radial Tires & Rims
Valve Stem Extenders
Rear Mud Flaps Only
Power Entrance Step-Double
Crowned, Laminated Fiberglass Roof
Full Basement with Pass Through Storage
Aluminum Side Hinge Trunk Doors
Fiberglass Front and Rear Caps
Dead Bolt Lock-Entrance Door
28" Radius Entry Door
Power Patio Awning
Towing Hitch with 7-Way Plug
Rear Mounted Roof Ladder
Heated Remote Exterior Mirrors
Automatic Leveling Jacks
Slide-out Room Awning(s)
Full Body Paint
20-Gallon LP Tank
Back Up Monitor with Side Cameras
Outside Entertainment with TV
Cockpit Power Shade
and Manual Side Shades
Oval Cockpit Pedestal Table
Computer Work Station at Passenger Seat
Easy Clean Cockpit Floor
High Gloss Gelcoat Sidewalls
(with Azdel™ Superlight Composite)
Exterior Propane Hook-Up

* Quantity of two each on 37TB

OPTIONAL FEATURES

INTERIOR COLOR SELECTIONS

Champagne
Prosecco

INTERIOR WOOD COLOR SELECTIONS

Slate Cherry
Driftwood

EXTERIOR COLOR SELECTIONS

Full Body Paint (Standard)
• Avalanche
• Bordeaux
• Bourbon

OPTIONAL FEATURES

Stainless Steel Oven IPO Drawer
15,000 BTU A/C with Heat Pump Rear
15,000 BTU A/C with Heat Pump Front
40" Cockpit Mounted TV
(n/a with Drop Down Bunk)
Stackable Washer/Dryer
Front Drop Down Bunk (37RB Only)
Theater Seating (n/a 37LS)
Diamond Shield Protection
CSA Upfit¹
CD-MVSA (Canadian Motor Vehicle Safety Act)
Travel Easy Roadside Assistance
provided by Coach-Net

Notes:

¹ Mandatory For All Canadian Provinces

MIRADA SELECT SPECIFICATIONS

CLASS A GAS	37LS	37TB	37RB
FORD ENGINE V-10 6.8L 3-VALVE	320 HP/460 TRQ	320 HP/460 TRQ	320 HP/460 TRQ
WHEEL BASE	242"	242"	242"
GVWR	22,000 lbs	22,000 lbs	22,000 lbs
GCWR	26,000 lbs	26,000 lbs	26,000 lbs
FUEL CAPACITY	80 gal	80 gal	80 gal
LP GAS CAPACITY	20 gal	20 gal	20 gal
FURNACE (BTUs)	35,000	35,000	35,000
EXTERIOR LENGTH (w/o Ladder)	37' 4"	37' 4"	38' 8"
EXTERIOR HEIGHT (w/A/C)	12' 7"	12' 7"	12' 7"
EXTERIOR WIDTH	102"	102"	102"
FRESH WATER	70 gal	70 gal	70 gal
GREY WATER	45 gal	46/46 gal	46/45 gal
BLACK WATER	45/45 gal	46/45 gal	46/45 gal
WATER HEATER	10 gal	20 gal	10 gal
AWNING SIZE	18'	18'	20'
EXTERIOR STORAGE	123 cu. ft.	115 cu. ft.	161 cu. ft.

GVWR (Gross Vehicle Weight Rating) is the maximum permissible weight of the unit when fully loaded. It includes all weights, inclusive of all fluids, occupants, cargo, optional equipment and accessories. For safety and product performance do NOT exceed the GVWR.

GCWR (Gross Combined Weight Rating) is the maximum permissible loaded weight of your motor home and any towed trailer or towed vehicle. Actual GCWR of this vehicle may be limited by the sum of the GVWR and the installed hitch receiver maximum capacity rating; see hitch rating label for detail.

GAWR (Gross Axle Weight Rating) is the maximum permissible weight, including cargo, fluids, optional equipment and accessories that can be safely supported by each axle.

UVW (Unloaded Vehicle Weight) * is the typical weight of the unit as manufactured at the factory. It includes all weight at the unit's axle(s), including full fuel, all fluids and LP Gas. The UVW does not include cargo, fresh potable water, additional optional equipment or dealer installed accessories.

*Estimated Average based on standard build optional equipment.

CCC (Cargo Carrying Capacity) ** is the amount of weight available for fresh potable water, cargo, passengers, additional optional equipment and accessories. CCC is equal to GVWR minus UVW. Available CCC should accommodate fresh potable water (8.3 lbs per gallon). Before filling the fresh water tank, empty the black and gray tanks to provide for more cargo capacity.

** Estimated average based on standard build optional equipment

Each Coachmen motorhome is weighed at the manufacturing facility prior to shipping. A label identifying the unloaded vehicle weight of the actual unit and the cargo carrying capacity is applied to every Coachmen motorhome prior to leaving our facilities.

The load capacity of your unit is designated by weight, not by volume, so you cannot necessarily use all available space when loading your unit.

Actual towing capacity is dependent upon your particular loading and towing circumstances, which includes the GVWR, GAWR and GCWR as well as adequate trailer brakes. Please refer to the Operator's Manual of your vehicle for further towing information.

All information contained in this brochure is believed to be accurate at the time of publication. However, during the model year, it may be necessary to make revisions and Coachmen reserves the right to make all such changes without notice, including prices, colors, materials, equipment and specifications as well as the addition of new models and the discontinuance of models shown in this brochure. Therefore, please consult with your Coachmen dealer and confirm the existence of any materials, design or specifications that are material to your purchase decision. 11/18

©Copyright 2018 Coachmen RV a Division of Forest River Inc. - All Rights Reserved.

CUSTOMER SATISFACTION



www.ForestRiverBuyLocal.com



FREE MEMBERSHIP
www.coachmenowners.com



Travel Easy™ Roadside Assistance

RVing is easier with Coachmen's Travel Easy™ Roadside Assistance provided FREE the first year of ownership to those who purchase a New Coachmen RV. Administered by Coach-Net, this service provides you with 24/7 operational, technical and emergency road service coverage. Also included is towing, fuel delivery, jump starts, lockout service, tire changes, mobile mechanic and unlimited technical assistance. Anywhere. Anytime. Travel Easy™ is the security of knowing that help is an easy phone call away.



Learn More
Scan this barcode using
a QR Reader on your
smart phone to learn
more about Forest River.



A Berkshire Hathaway company.



Leader to the Great Outdoors.

Coachmen RV, a Division of Forest River, Inc.,
A Berkshire Hathaway Company

423 N. Main St., P.O. Box 30, Middlebury, IN 46540

To learn more about Coachmen RV and our products
and see how Coachmen is making the easy life easier,
visit www.coachmenrv.com