

SALEM / CRUISE LITE: NORTHWEST EDITION

NORTHWEST EDITION

SALEM

SALEM
CRUISE
LITE





263BHXL

SHOWN IN OYSTER
SOME FEATURES HAVE LIMITED AVAILABILITY



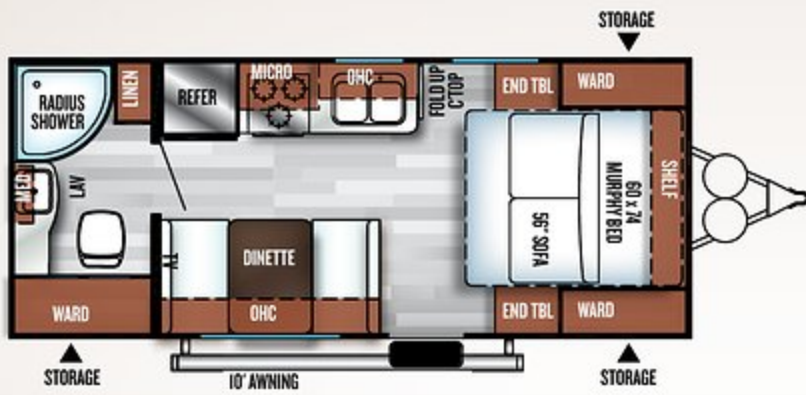


171RBXL

SHOWN IN MINERAL



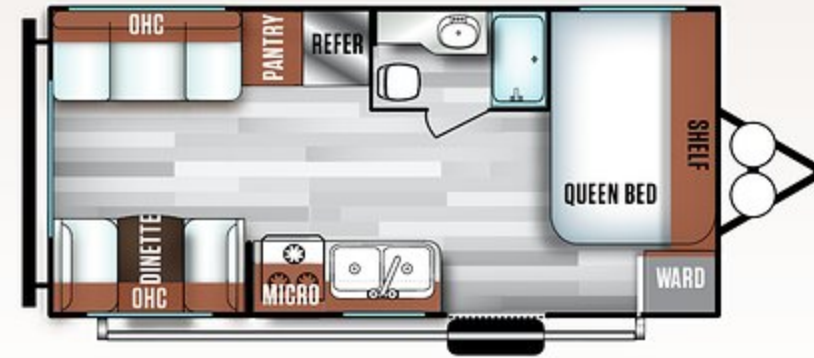
BED STORES AWAY,
FULLY MADE IN UNDER
10 SECONDS.



171RBXL

DRY WEIGHT:
4092

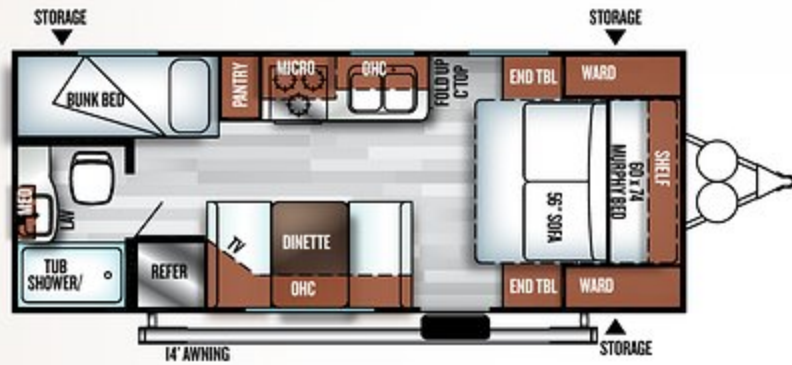
EXT. LENGTH:
23'



191RDXL

DRY WEIGHT:
4249

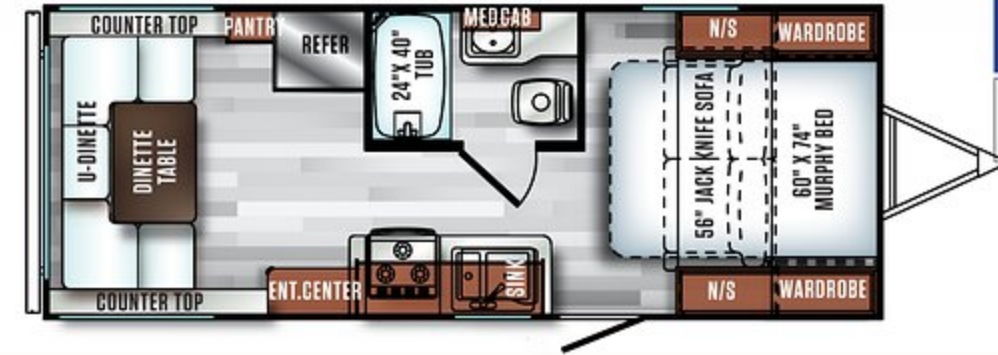
EXT. LENGTH:
23' 4"



201BHXL

DRY WEIGHT:
4314

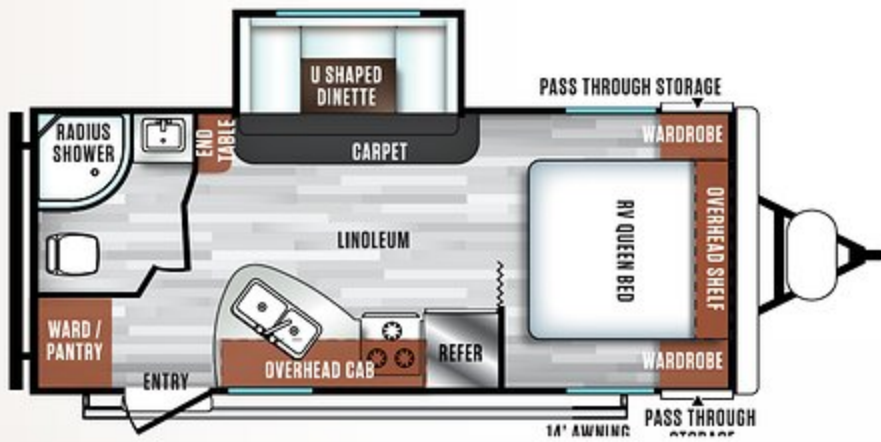
EXT. LENGTH:
24' 2"



207RUXL

DRY WEIGHT:
4423

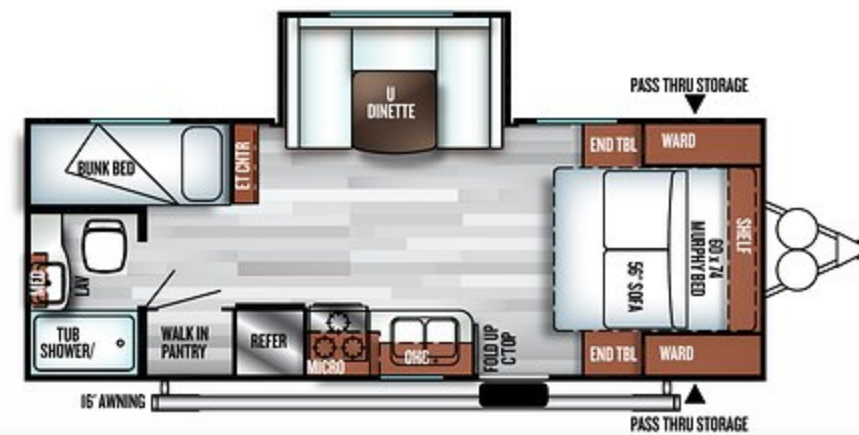
EXT. LENGTH:
25'



210RBXL

DRY WEIGHT:
4830

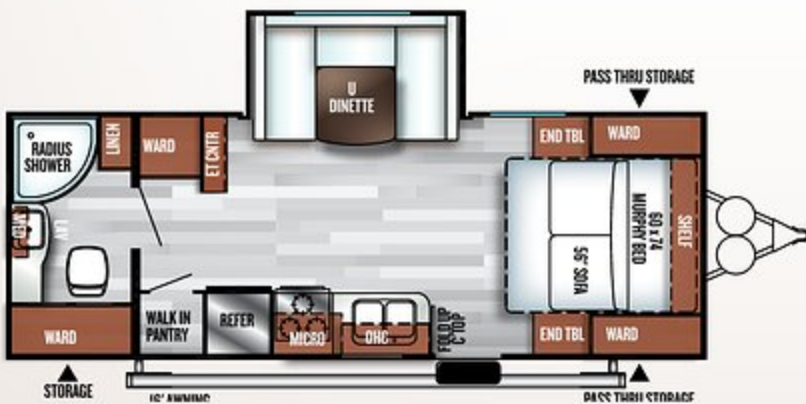
EXT. LENGTH:
25' 2"



230BHXL

DRY WEIGHT:
4985

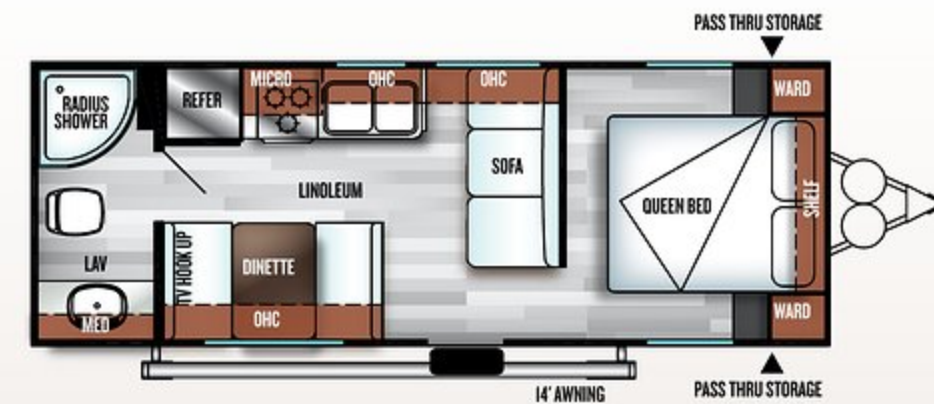
EXT. LENGTH:
26' 3"



233RBXL

DRY WEIGHT:
5278

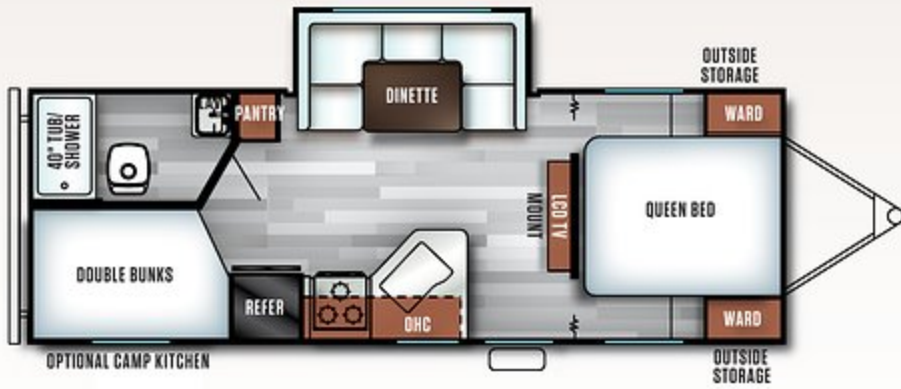
EXT. LENGTH:
26' 3"



241QBXL

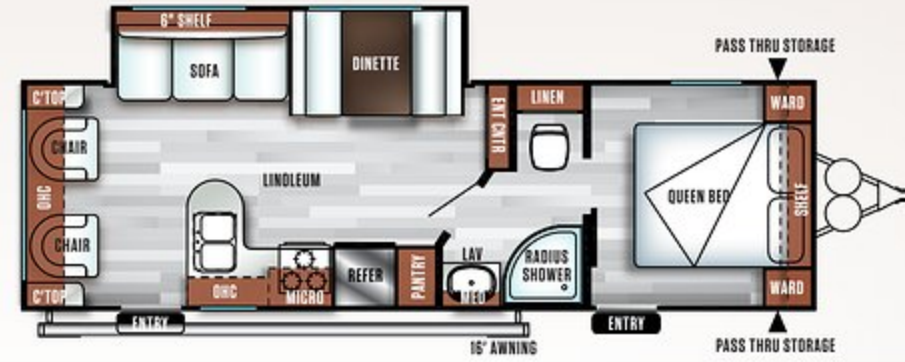
DRY WEIGHT:
4624

EXT. LENGTH:
26' 10"



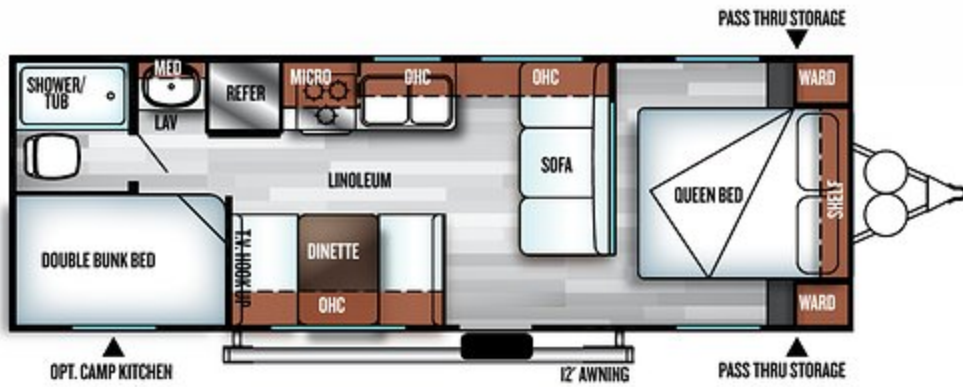
243BHXL

DRY WEIGHT:
5492
EXT. LENGTH:
28' 2"



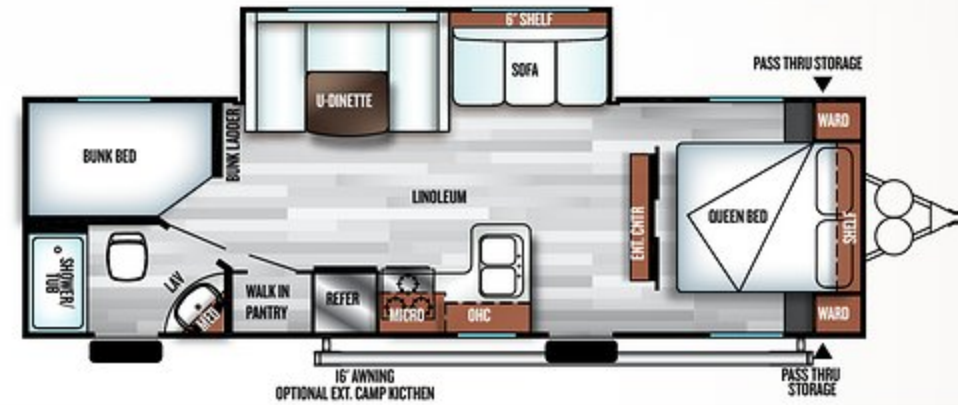
254RLXL

DRY WEIGHT:
5793
EXT. LENGTH:
30' 8"



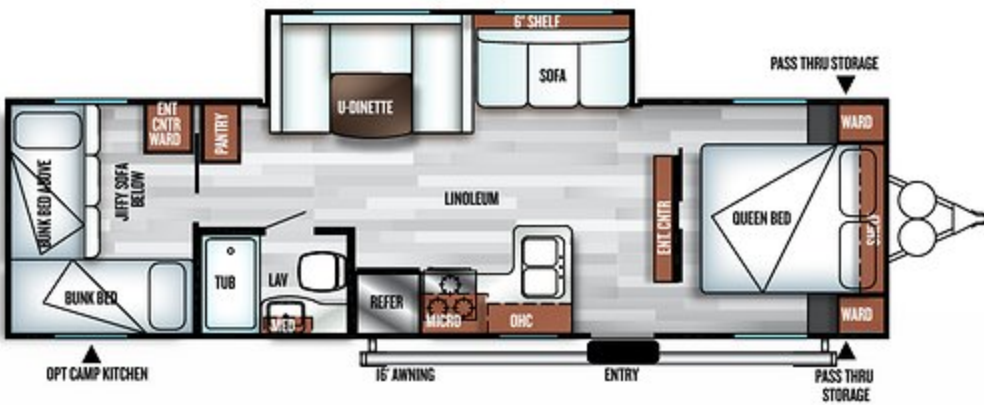
261BHXL

DRY WEIGHT:
4448
EXT. LENGTH:
28' 7"



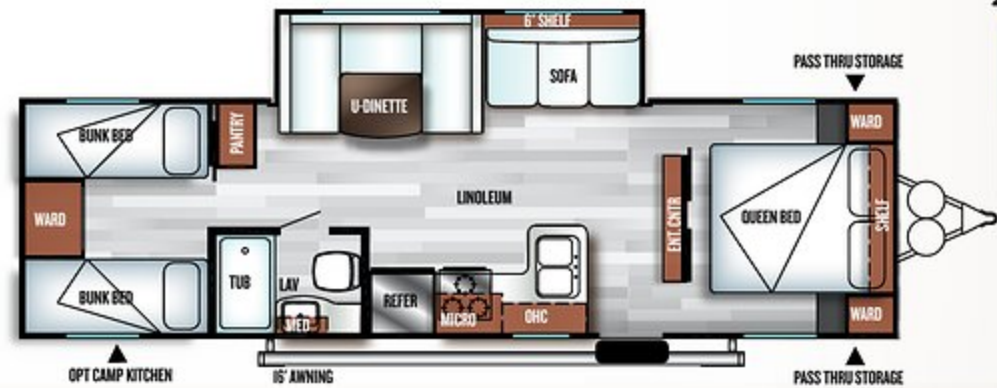
263BHXL

DRY WEIGHT:
5866
EXT. LENGTH:
31' 11"



273QBXL

DRY WEIGHT:
6162
EXT. LENGTH:
33' 8"



282QBXL

DRY WEIGHT:
6458
EXT. LENGTH:
33' 4"

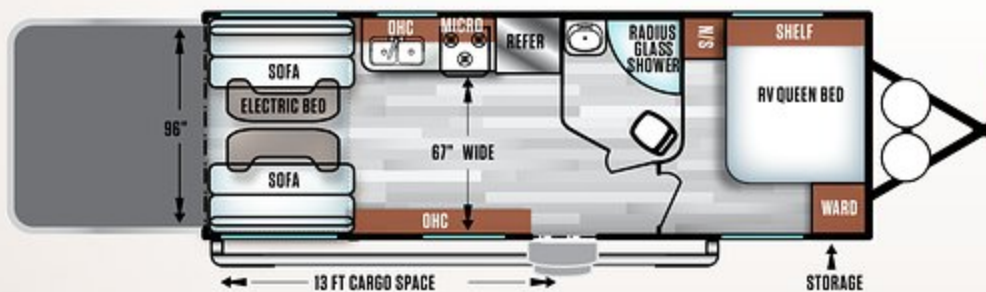
	171RBXL	191RDXL	201BHXL	207RUXL	210RBXL	230BHXL	233RBXL	241QBXL	243BHXL	254RLXL	261BHXL	263BHXL	273QHXL	282QBXL
GVWR	7,522	7,465	7,544	7,489	7,500	7,655	7,596	7,470	7,566	7,630	7,500	7,635	7,702	7,688
HITCH WEIGHT (LBS.)	522	465	544	489	500	655	596	470	566	630	500	635	702	688
UVW (LBS.)	4,092	4,249	4,314	4,423	4,830	4,985	5,278	4,624	5,492	5,793	4,448	5,866	6,162	6,458
CCC (LBS.)	3,430	3,216	3,230	3,066	2,670	2,670	2,318	2,846	2,074	1,837	3,052	1,769	1,540	1,230
EXTERIOR LENGTH	23' 0"	23' 4"	24' 2"	25' 0"	25' 2"	26' 3"	26' 3"	26' 10"	28' 2"	30' 8"	28' 7"	31' 11"	33' 8"	33' 4"
EXTERIOR HEIGHT	10' 1"	10' 3"	10' 1"	10' 1"	10' 3"	10' 3"	10' 3"	10' 1"	10' 1"	10' 3"	10' 1"	10' 3"	10' 3"	10' 3"
EXTERIOR WIDTH	96"	96"	96"	96"	96"	96"	96"	96"	96"	96"	96"	96"	96"	96"
FRESH WATER (GAL.)	42	29	42	46	61	42	42	29	46	61	29	61	61	61
GRAY WATER (GAL.)	32	42	32	42	28	32	32	28	74	32	28	74	32	32
BLACK WATER (GAL.)	32	42	32	42	32	32	32	32	32	42	42	32	42	42
AWNING SIZE (FT)	10	15	14	10	14	16	14	16	12	16	16	16	16	16



211SSXL

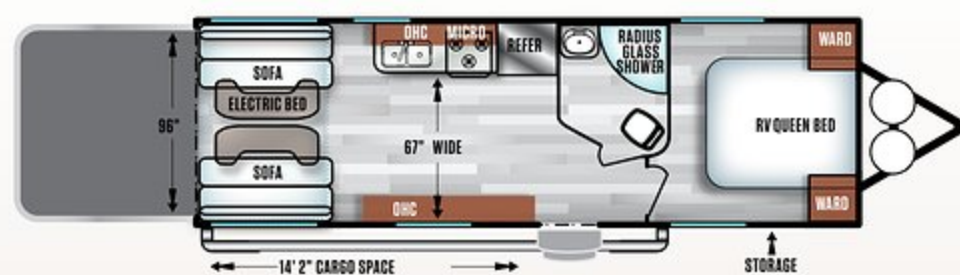
SHOWN IN MINERAL
SHOWN WITH OPTIONAL SWIVEL CHAIRS IN PLACE OF STANDARD SOFA

	211SSXL	251SSXL
GVWR	8,540	8,546
HITCH WEIGHT (LBS.)	740	746
UVW (LBS.)	5,262	5,664
CCC (LBS.)	3,278	2,882
EXTERIOR LENGTH	27' 5"	29' 5"
EXTERIOR HEIGHT	11' 8"	11' 8"
EXTERIOR WIDTH	96"	96"
FRESH WATER (GAL.)	61	61
GRAY WATER (GAL.)	26	26
BLACK WATER (GAL.)	32	32
AWNING SIZE (FT)	18	18



211SSXL

DRY WEIGHT:
5262
EXT. LENGTH:
27' 5"



251SSXL

DRY WEIGHT:
5664
EXT. LENGTH:
29' 5"



UNDERMOUNT SINK W/ FAUCET



OUTSIDE STEPS



GLASS COOKTOP COVER

CRUISE LITE STANDARDS & OPTIONS

STANDARD FEATURES

- Upgraded kitchen faucet
- 6-way adjustable hidden hinges
- Modern roller shades
- Large entertainment center, allows for larger TV (Some models)
- Aerodynamic front profile
- Mortise and tenon shaker style cabinet doors
- 3 Burner cooktop
- 13.5K A/C (Non-ducted)
- Diamond plate rock guard
- SolidStep entry steps
- Digital TV antenna w/ booster
- Cable / satellite ready
- Bluetooth stereo
- "Teddy bear" bunk mattress
- Shoe nook at the end of the main bed (Per floorplan)
- Large tables at U-dinette
- 2 Exterior speakers
- 2 - 20 lb. LP bottles w/ hard cover
- Extra large kitchen overhead cabinets
- Stainless steel look appliances
- Water heater by-pass
- Ball bearing drawer guides
- 6 Gal. Gas DSI water heater
- Radius shower enclosure (Per floorplan)
- Pass thru storage
- One piece kitchen backsplash
- High definition countertops

- Brushed nickel cabinet hardware
- Beauflor® linoleum flooring
- Black tank flush
- Outside shower
- Skylight over tub
- Radial tires with full spare and carrier
- Double door refrigerator
- Glass cooktop cover w/oven
- Undermount sink w/sink cover
- Flip-up countertop extension (Per floorplan)
- LP quick disconnect
- Power awning
- Power tongue jack
- Push button remote w/holster
- External LED strip lighting
- Solar prep and LED lights

POPULAR OPTIONS

- Fiberglass siding
- Backpack flip down rack
- Chrome wheels
- Tub surround (Per floorplan)
- Ducted A/C
- Enclosed holding tanks (Some models)
- 12 Volt heat strips
- Exterior camp kitchen (Some models)
- 2nd Bunk Window
- Power Stab Jacks

27RKSS

SHOWN IN MINERAL

SALEM POPULAR FEATURES

1. Undermount sink
2. 3 Burner / Glass cooktop cover
3. Extra deep kitchen cabinets
4. Premium faucet
5. Stainless steel look appliances
6. Modern roller shades
7. Beauflor linoleum
8. Additional storage



CONSTRUCTION BUILT TO LAST.

- | | | |
|---|--|--|
| 1 2" x 3" floor joists 12" on center | 8 Extra large full pass-thru storage | 15 Stain resistant carpet |
| 2 2" wall studs 16" or less on center | 9 Smooth rolled skirting | 16 One piece linoleum flooring |
| 3 30" fiberglass radius entry door | 10 In floor ducted heat | 17 Safety glass windows |
| 4 Aluminum siding | 11 Diamond plate rockguard | 18 A/C ducts |
| 5 5" bowed truss roof rafters | 12 3/8" roof decking (full walk-on roof) | 19 "Darco" anti-puncture underbelly wrap |
| 6 One piece seamless roof (12 yr. manufacturer defect warranty) | 13 LP bottle cover w/ easy access | 20 5/8" flooring |
| 7 R-7 fiberglass insulation throughout | 14 13.5K ducted roof, high output AC w/ quick cool | |

At Salem your satisfaction is serious business and it shows. Our commitment to your satisfaction includes:

A: Fiberglass option

B: Flip down rack option

C: 6 gallon GE DSI water heater with Quick Recovery

D: Central switch command center



27REIS

SHOWN IN OYSTER WITH CUSTOMER-SUPPLIED TV



FIBERGLASS OPTION

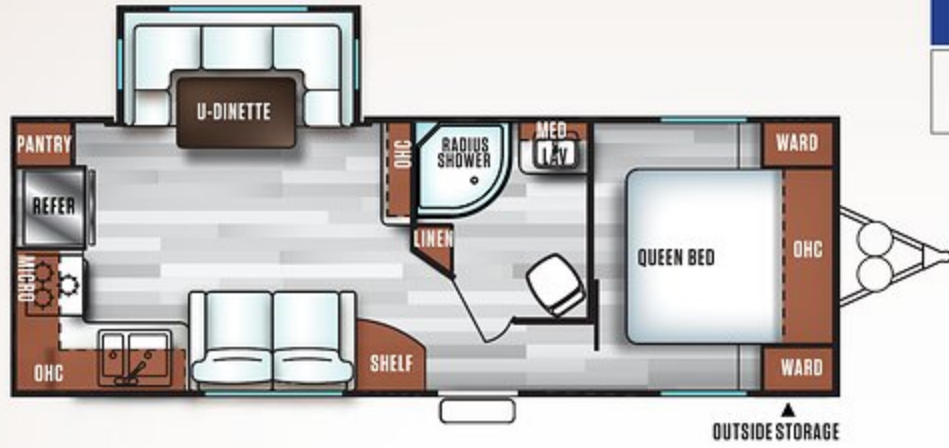


SHOWN WITH CUSTOMER-SUPPLIED TV

25RKS

DRY WEIGHT:
5794

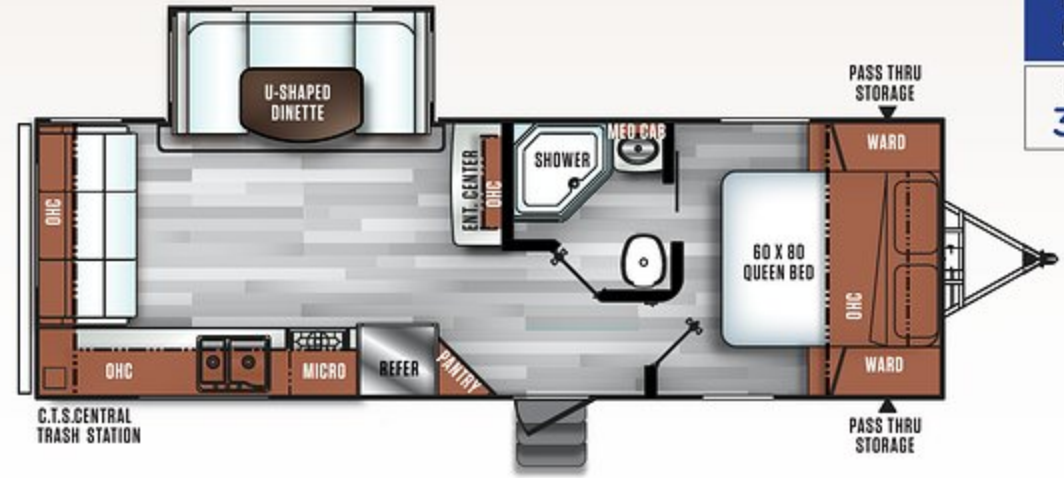
EXT. LENGTH:
29' 1"



25RLS

DRY WEIGHT:
5987

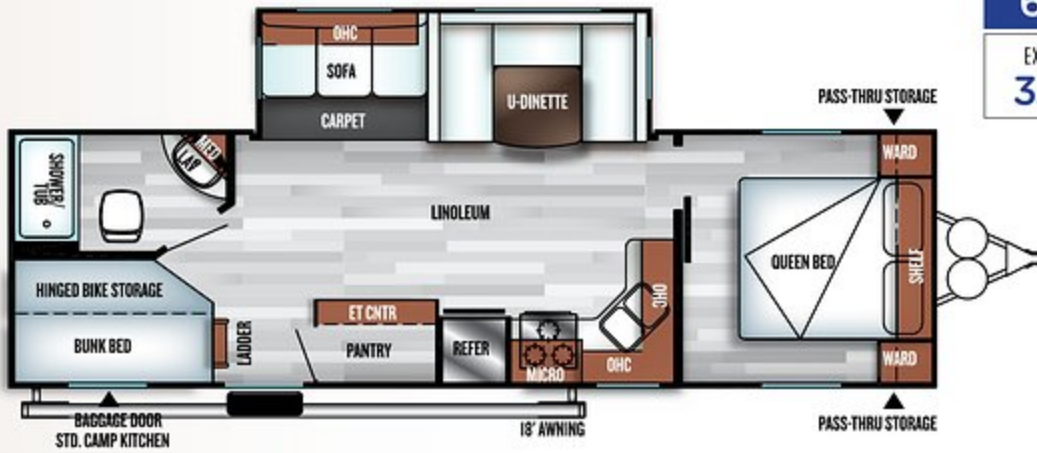
EXT. LENGTH:
30' 9"



27DBK

DRY WEIGHT:
6898

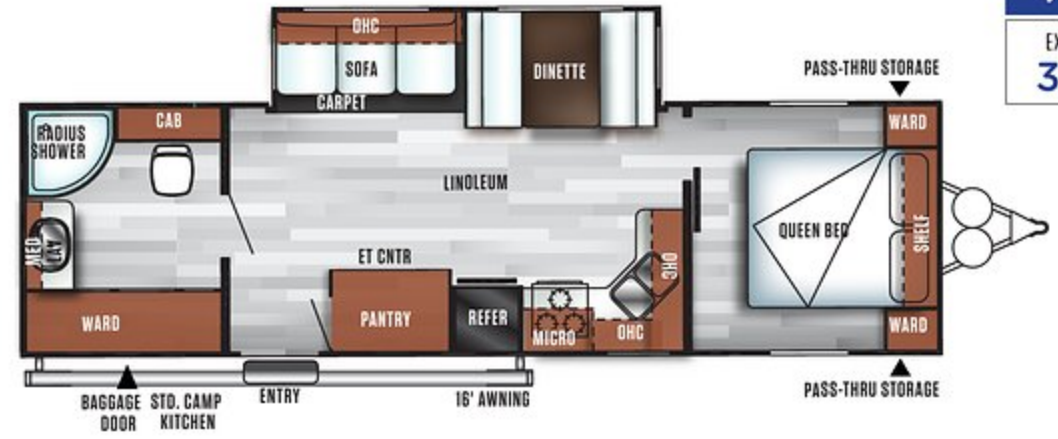
EXT. LENGTH:
32' 4"



27RBK

DRY WEIGHT:
7346

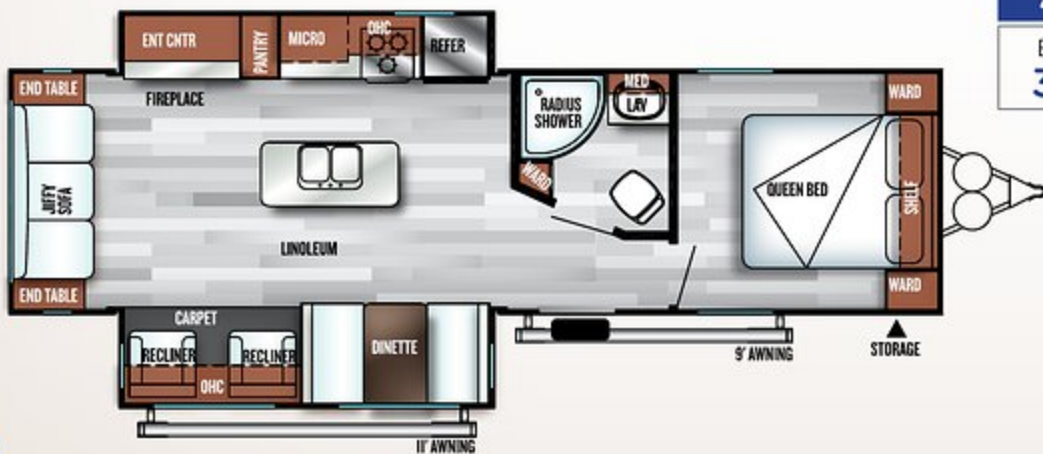
EXT. LENGTH:
32' 7"



27REIS

DRY WEIGHT:
7365

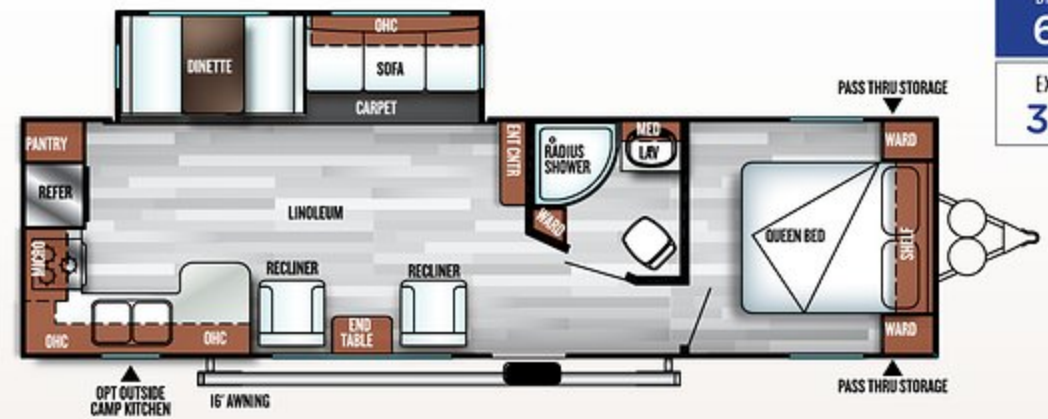
EXT. LENGTH:
34' 1"



27RKSS

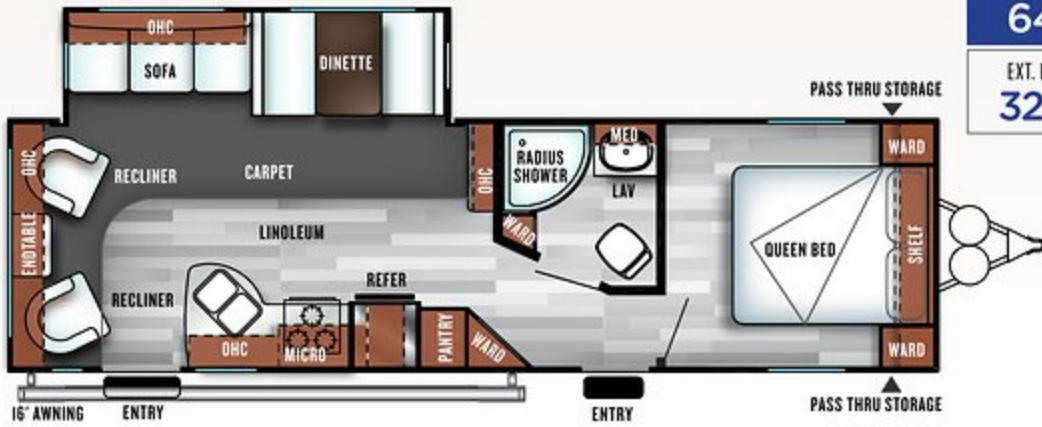
DRY WEIGHT:
6798

EXT. LENGTH:
33' 6"



27RLSS

DRY WEIGHT:
6418
EXT. LENGTH:
32' 3"



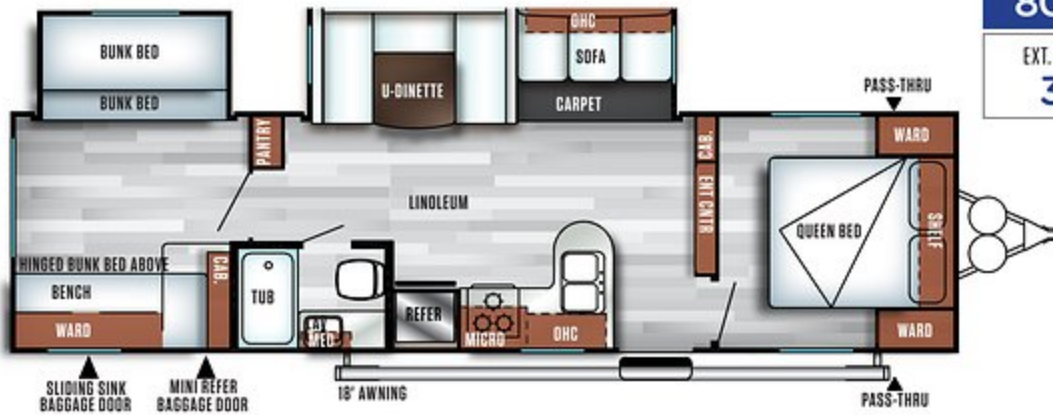
27TDSS

DRY WEIGHT:
7162
EXT. LENGTH:
32' 8"



28CKDS

DRY WEIGHT:
8000
EXT. LENGTH:
35'



32BHDS

DRY WEIGHT:
8283
EXT. LENGTH:
36' 2"



	25RKS	25RLS	27DBK	27RBK	27REIS	27RKSS	27RLSS	27TDSS	28CKDS	32BHDS
GVWR	7,578	7,597	9,488	9,538	9,535	9,660	9,497	9,610	9,676	11,070
HITCH WEIGHT (LBS.)	578	597	688	738	735	860	697	810	876	910
UVW (LBS.)	5,794	5,987	6,898	7,346	7,365	6,798	6,418	7,162	8,000	8,283
CCC (LBS.)	1,784	1,610	2,590	2,192	2,170	2,862	3,079	2,448	1,676	2,787
EXTERIOR LENGTH	29' 1"	30' 9"	32' 4"	32' 7"	34' 1"	33' 6"	32' 3"	32' 8"	35'	36' 2"
EXTERIOR HEIGHT	11' 3"	11'	11'	11' 5"	11' 5"	11' 3"	11' 3"	11' 3"	11' 5"	11' 5"
EXTERIOR WIDTH	96"	96"	96"	96"	96"	96"	96"	96"	96"	96"
FRESH WATER (GAL.)	61	61	61	61	61	61	61	61	61	61
GRAY WATER (GAL.)	66	66	64	42	33	66	66	74	32	32
BLACK WATER (GAL.)	42	42	28	33	42	42	42	32	42	32
AWNING SIZE (FT)	16	18	17	17	11 & 10	16	16	16	18	18

THE SALEM LINE-UP

YOUR SALEM DEALER

2018



SALEM



SALEM CRUISE LITE



SALEM VILLA | VILLA ESTATE



SALEM HEMISPHERE

Specification Definitions

GVWR (Gross Vehicle Weight Rating) - is the maximum permissible weight of the unit when fully loaded. It includes all weights, inclusive of all fluids, cargo, optional equipment and accessories. For safety and product performance do NOT exceed the GVWR.

GAWR (Gross Axle Weight Rating) - is the maximum permissible weight, including cargo, fluids, optional equipment and accessories that can be safely supported by a combination of all axles.

UVW (Unloaded Vehicle Weight)* - is the typical weight of the unit as manufactured at the factory. It includes all weight at the unit's axle(s) and tongue or pin and LP Gas. The UVW does not include cargo, fresh potable water, additional optional equipment or dealer installed accessories.

*Estimated average based on standard build optional

equipment.

CCC (Cargo Carrying Capacity)** - is the amount of weight available for fresh potable water, cargo, additional optional equipment and accessories. CCC is equal to GVWR minus UVW. Available CCC should accommodate fresh potable water (8.3 lbs per gallon). Before filling the fresh water tank, empty the black and gray tanks to provide for more cargo capacity.

** Estimated average based on standard build optional equipment

Each Forest River RV is weighed at the manufacturing facility prior to shipping. A label identifying the unloaded vehicle weight of the actual unit and the cargo carrying capacity is applied to every Forest River RV prior to leaving our facilities.

The load capacity of your unit is designated by weight, not by volume, so you cannot necessarily use all available space when loading your unit.

All information contained in this brochure is believed to be accurate at the time of publication. However, during the model year, it may be necessary to make revisions and Forest River, Inc., reserves the right to make all such changes without notice, including prices, colors, materials, equipment and specifications as well as the addition of new models and the discontinuance of models shown in this brochure. Therefore, please consult with your Forest River dealer and confirm the existence of any materials, design or specifications that are material to your purchase decision. Litho. U.S.A. FOR 1423 P/W: 2017.11.01



www.ForestRiverBuyLocal.com

FREE MEMBERSHIP
to Forest River Owners' Group

www.forestriverfrog.com



Learn More
Scan this barcode using
a QR Reader on your
smart phone to learn
more about Forest River.



A Berkshire Hathaway company.

Forest River, Inc. 55470 C.R. 1 Elkhart, IN 46515 | (574) 533-5934
www.forestriverinc.com/Salem | www.forestriveraccessories.com



PRE-DELIVERY INSPECTION FACILITY

20,000 square feet of quality assurance. The bare essentials for a premium product. This state-of-the-art facility gives immediate daily feedback to production for quality assurance in every unit built.