

SPORTSMEN CLASSIC SE & CLASSIC

ultra lightweight travel trailers

ultra
lightweight
travel
trailers

SPORTSMEN

Classic

KZ
Est. 1972



SPORTSMEN CLASSIC SE & CLASSIC

ultra lightweight travel trailers

ultra
lightweight
travel
trailers

SPORTSMEN
Classic

KZ
Est. 1972



Affordable and small,
but **HAS IT ALL!**

Your journey begins with the all-new **CLASSIC SE** – KZ's most affordable model. Standards include 78-inch ceilings, maple cabinetry, roomy sleeping quarters, a full-size shower, cable hookup and USB outlets, an awning and plenty of storage. And with a 3,500-pound GVWR, you can tow it with your crossover.

Our Classic SE offers several versatile floorplans

- compact model
- bunkhouse
- walk-around queen
- tip-out bunk model featuring KZ's exclusive Aqualon Edge marine-grade fabric, which reduces heat buildup inside the tent.

180BHSE

Residential-grade linoleum
resists cold cracking

**WINDOW-VIEW
DINETTE**

converts to additional
sleep space.

KITCHEN

- Maple cabinets
- two-burner range
- bright LED lighting
- 12V dual USB ports
(180BHSE shown)



**← GENEROUS
BATHROOM**

includes full-size shower
and foot-flush toilet.

← BUNKHOUSE

with 28 x 75-inch bunks,
lookout window and
nearby outlets.
(180BHSE shown)

SPORTSMEN
CLASSIC SE



Affordable and small,
but **HAS IT ALL!**

Your journey begins with the all-new **CLASSIC SE** – KZ’s most affordable model. Standards include 78-inch ceilings, maple cabinetry, roomy sleeping quarters, a full-size shower, cable hookup and USB outlets, an awning and plenty of storage. And with a 3,500-pound GVWR, you can tow it with your crossover.

Our Classic SE offers several versatile floorplans

- compact model
- bunkhouse
- walk-around queen
- tip-out bunk model featuring KZ’s exclusive Aqualon Edge marine-grade fabric, which reduces heat buildup inside the tent.

180BHSE

Residential-grade linoleum
resists cold cracking

WINDOW-VIEW DINETTE

converts to additional
sleep space.

KITCHEN

- Maple cabinets
- two-burner range
- bright LED lighting
- 12V dual USB ports
(180BHSE shown)



GENEROUS BATHROOM

includes full-size shower
and foot-flush toilet.

BUNKHOUSE

with 28 x 75-inch bunks,
lookout window and
nearby outlets.
(180BHSE shown)

STANDARDS

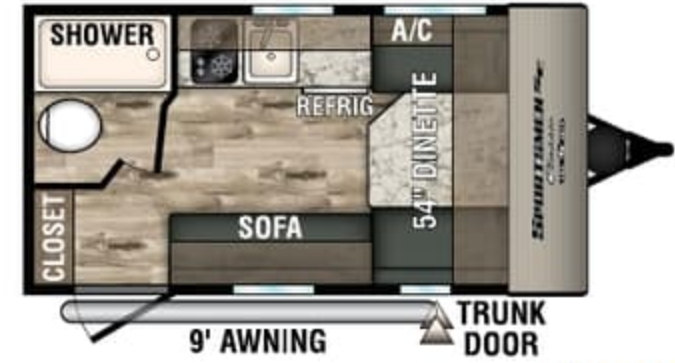
- KZ Exclusive Tough Shield .030 Exterior Metal
- R-7 Insulation
- Front Diamond Plate
- Alum-a-Tough® Roofing w/12-Year Limited Warranty
- Tinted Windows
- Radial Tires
- Self-Adjust Electric Brakes
- Rear Bumper w/Sewer Hose Storage
- Digital TV Antenna
- Cable Hookup
- City Water Fill
- 12V Converter w/Charger
- LP Tank
- 2-Burner Range
- Electric Refrigerator
- Single-Bowl Sink
- 6-Gallon LP DSI Water Heater
- Rail-Style Cabinet Doors w/Modern Handles
- Overhead Cabinets
- LED Interior Lights
- Shower & Toilet
- Tank Monitor Panel

OPTIONS

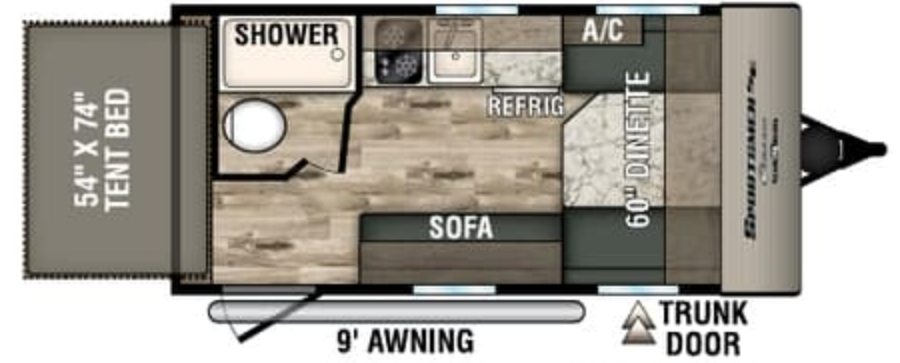
- Gas/Electric Refrigerator IPO Electric Refrigerator
- KZ ADVANTAGE PACKAGE (MANDATORY OPTION)**
- EXTERIOR**
- 5/8" T&G Plywood Floor
 - 8,000 BTU A/C
 - Manual Awning
 - Key-Alike Program for Baggage & Entry Doors
 - Aqualon Edge Tent Material
 - Spare Tire & Carrier
 - 2 - Scissor Style Stabilizer Jacks
 - Three-Toned Exterior Metal
 - Solar Prep
 - Backup Camera Prep
 - Nitrogen-Filled Tires
- INTERIOR**
- 20,000 BTU Furnace
 - Plywood Bed Base
 - Foot-Flush Toilet
 - (2) 6.5" Interior Speakers
 - Digital Media Stereo w/ Bluetooth & USB Port

KZ CONVENIENCE PACKAGE (MANDATORY OPTION)

- EXTERIOR**
- Friction-Hinge Entry Door
 - Omnidirectional HDTV Antenna
- INTERIOR**
- Residential-Grade Linoleum
 - Rail-Style Cabinet Doors
 - Interior Control Switches on Overhead End Cabinet



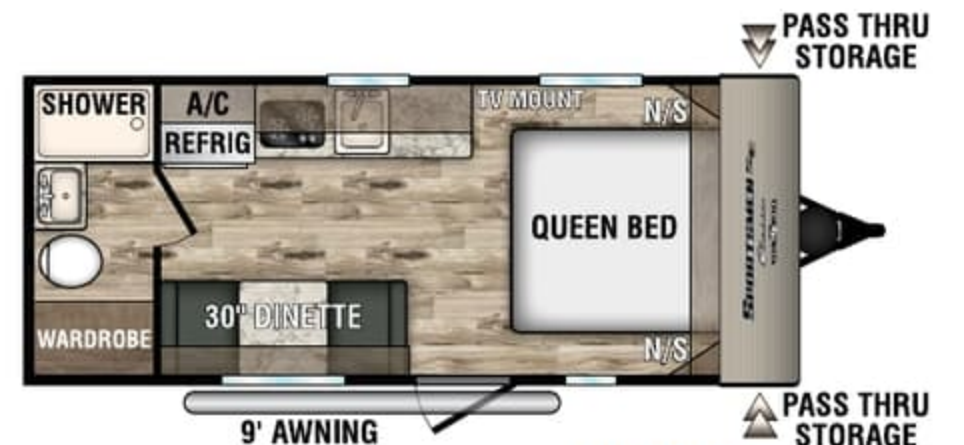
130RBSE (UVW 2,126)



150RBSE (UVW 2,300)



180BHSE (UVW 2,623)



180QBSE (UVW 2,713)

Ultra Lightweight Travel Trailers	130RBSE	150RBSE	180BHSE	180QBSE
UVW (Unloaded Vehicle Weight)*	2,126	2,300	2,623	2,713
Dry Hitch Weight*	323	320	346	336
Dry Axle Weight*	1,803	1,980	2,277	2,377
NCC (Net Carrying Capacity)	674	500	877	787
GVWR	2,800	2,800	3,500	3,500
Interior Height	78"	78"	78"	78"
Exterior Height w/o Roof A/C	107"	107"	107"	107"
Exterior Width	84"	84"	84"	90"
Exterior Length	15' 10"	17' 2"	20' 6"	21' 10"
Refrigerator (cu. feet)	3	3	4	4
Water Heater Cap. (gal. LP w/DSI)	6	6	6	6
Fresh Water Cap. (gal.)	20	20	20	20
Waste Water Cap. (gal.)	9	9	9	32
Gray Water Cap. (gal.)	15	15	15	32
LP Gas Cap. (lbs.)	20	20	20	20
Furnace BTUs (1,000s)	20	20	20	20
Tire Size	13"	13"	14"	14"
Awning	9'	9'	9'	9'

*This weight reflects the rolling average unit weight for each model. Your trailer weight will vary according to optional equipment.

STANDARDS

- KZ Exclusive Tough Shield .030 Exterior Metal
- R-7 Insulation
- Front Diamond Plate
- Alum-a-Tough® Roofing w/12-Year Limited Warranty
- Tinted Windows
- Radial Tires
- Self-Adjust Electric Brakes
- Rear Bumper w/Sewer Hose Storage
- Digital TV Antenna
- Cable Hookup
- City Water Fill
- 12V Converter w/Charger
- LP Tank
- 2-Burner Range
- Electric Refrigerator
- Single-Bowl Sink
- 6-Gallon LP DSI Water Heater
- Rail-Style Cabinet Doors w/Modern Handles
- Overhead Cabinets
- LED Interior Lights
- Shower & Toilet
- Tank Monitor Panel

OPTIONS

- Gas/Electric Refrigerator IPO Electric Refrigerator

KZ ADVANTAGE PACKAGE (MANDATORY OPTION)

EXTERIOR

- 5/8" T&G Plywood Floor
- 8,000 BTU A/C
- Manual Awning
- Key-Alike Program for Baggage & Entry Doors
- Aqualon Edge Tent Material
- Spare Tire & Carrier
- 2 - Scissor Style Stabilizer Jacks
- Three-Toned Exterior Metal
- Solar Prep
- Backup Camera Prep
- Nitrogen-Filled Tires

INTERIOR

- 20,000 BTU Furnace
- Plywood Bed Base
- Foot-Flush Toilet
- (2) 6.5" Interior Speakers
- Digital Media Stereo w/ Bluetooth & USB Port

KZ CONVENIENCE PACKAGE (MANDATORY OPTION)

EXTERIOR

- Friction-Hinge Entry Door
- Omnidirectional HDTV Antenna

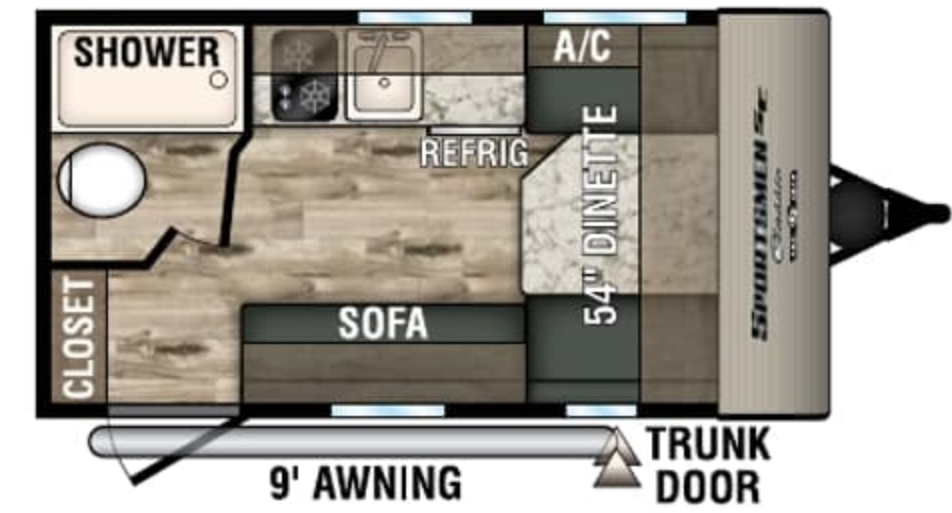
INTERIOR

- Residential-Grade Linoleum
- Rail-Style Cabinet Doors
- Interior Control Switches on Overhead End Cabinet

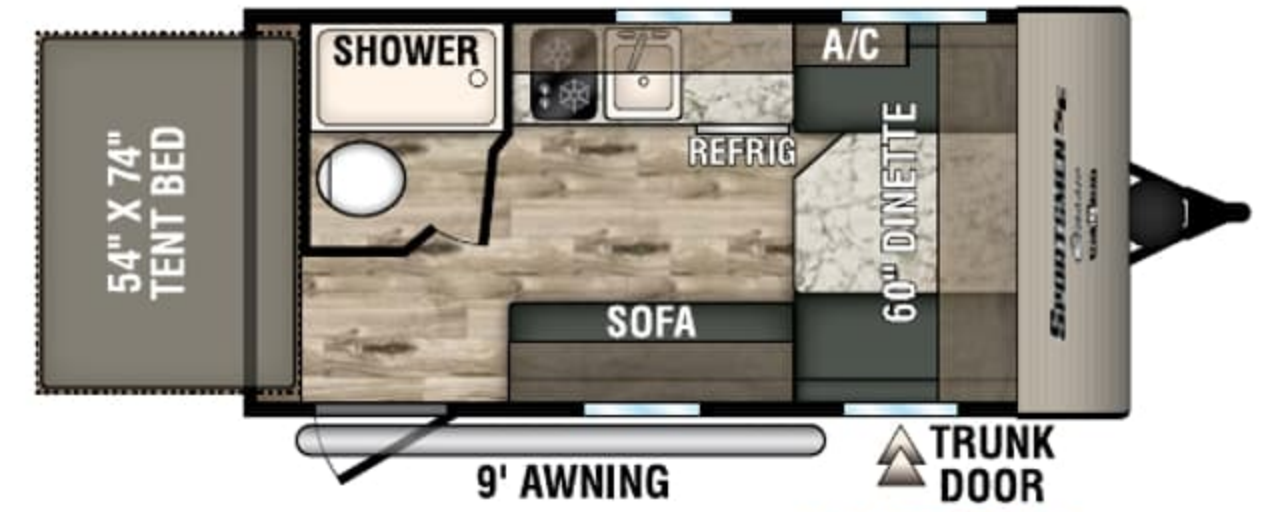


Ultra Lightweight Travel Trailers	130RBSE	150RBTE	180BHSE	180QBSE
UVW (Unloaded Vehicle Weight)*	2,126	2,300	2,623	2,713
Dry Hitch Weight*	323	320	346	336
Dry Axle Weight*	1,803	1,980	2,277	2,377
NCC (Net Carrying Capacity)	674	500	877	787
GVWR	2,800	2,800	3,500	3,500
Interior Height	78"	78"	78"	78"
Exterior Height w/o Roof A/C	107"	107"	107"	107"
Exterior Width	84"	84"	84"	90"
Exterior Length	15' 10"	17' 2"	20' 6"	21' 10"
Refrigerator (cu. feet)	3	3	4	4
Water Heater Cap. (gal. LP w/DSI)	6	6	6	6
Fresh Water Cap. (gal.)	20	20	20	20
Waste Water Cap. (gal.)	9	9	9	32
Gray Water Cap. (gal.)	15	15	15	32
LP Gas Cap. (lbs.)	20	20	20	20
Furnace BTUs (1,000s)	20	20	20	20
Tire Size	13"	13"	14"	14"
Awning	9'	9'	9'	9'

*This weight reflects the rolling average unit weight for each model. Your trailer weight will vary according to optional equipment.



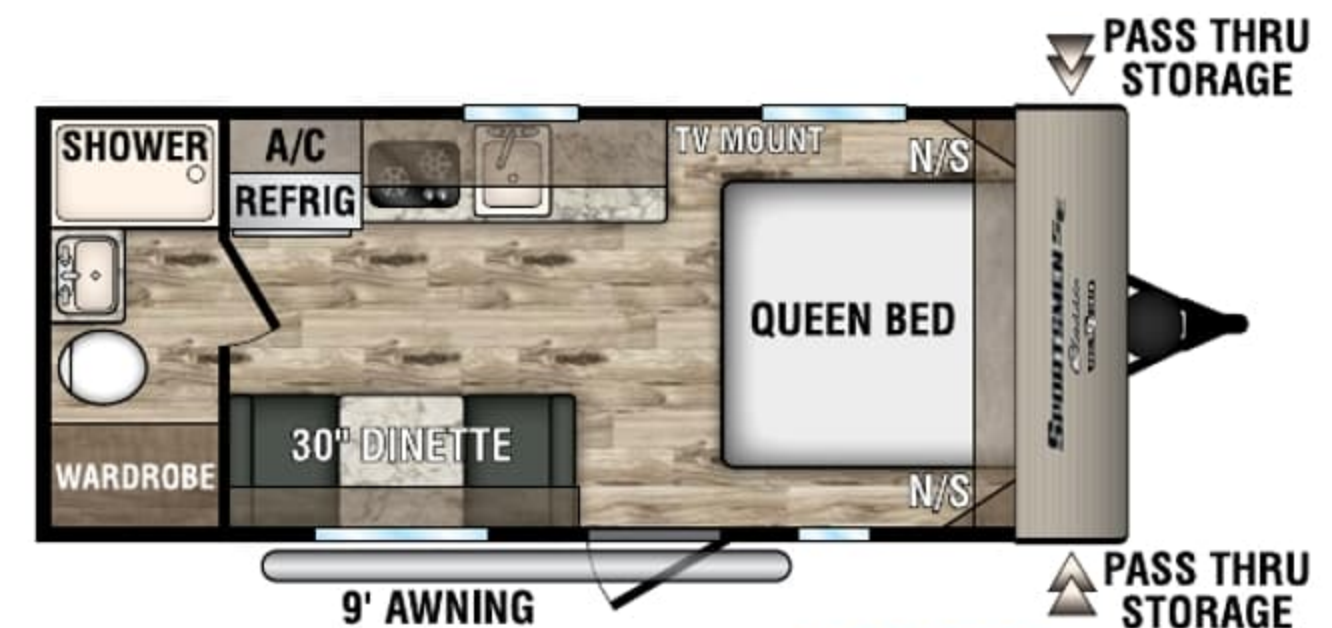
130RBSE (UVW 2,126)



150RBTE (UVW 2,300)



180BHSE (UVW 2,623)



180QBSE (UVW 2,713)

Never a **BETTER TIME** to share **OUTDOOR ADVENTURES!**

A great RV at a great price – **SPORTSMEN CLASSIC** has been a KZ customer favorite for years. Loaded with standard features, this affordable RV tows with an SUV and is offered in many versatile floorplans, including two toy haulers and several expandable bunk models built with KZ's exclusive Aqualon Edge tent fabric.

There's a **CLASSIC** for everyone, whatever their needs –

- spacious shower
- sleep space for eight
- dinette slideout
- walk-around queen bed
- more closet space

KITCHEN ▶

- deep kitchen sink, large enough for filling pots and pitchers
- microwave
- two-burner cooktop
- centralized cabinet-end control panel
- optional 7-cubic-foot refrigerator (shown)

181BH : Kona décor



Choose the **COMFY AND SPACIOUS**

54 x 80-inch bed (181BH shown), or the walk-around queen bed with built-in corner nightstand shelves. (160QB & 190BH)



▶ **BENCH-SEAT DINETTE** big enough for family meals, then folds down neatly for comfortable sleep space. (181BH shown)

Never a **BETTER TIME** to share **OUTDOOR ADVENTURES!**

A great RV at a great price – **SPORTSMEN CLASSIC** has been a KZ customer favorite for years. Loaded with standard features, this affordable RV tows with an SUV and is offered in many versatile floorplans, including two toy haulers and several expandable bunk models built with KZ's exclusive Aqualon Edge tent fabric.

There's a **CLASSIC** for everyone, whatever their needs –

- spacious shower
- sleep space for eight
- dinette slideout
- walk-around queen bed
- more closet space

KITCHEN

- deep kitchen sink, large enough for filling pots and pitchers
- microwave
- two-burner cooktop
- centralized cabinet-end control panel
- optional 7-cubic-foot refrigerator (shown)

181BH : Kona décor



Choose the **COMFY AND SPACIOUS**

54 x 80-inch bed (181BH shown), or the walk-around queen bed with built-in corner nightstand shelves. (160QB & 190BH)



BENCH-SEAT DINETTE big enough for family meals, then folds down neatly for comfortable sleep space. (181BH shown)

DÉCOR



Kona



CONVENIENCE & SECURITY!

One lock for all applications, and standard industry keys can't open your storage compartments or entry doors.

STANDARDS

- KZ Exclusive Tough Shield .030 Exterior Metal
- R-7 Insulation
- Front Diamond Plate
- Alum-a-Tough® Roofing w/12-Year Limited Warranty
- Tinted Windows
- Radial Tires
- Self-Adjust Electric Brakes
- Rear Bumper w/Sewer Hose Storage
- Digital TV Antenna
- Cable Hookup
- City Water Fill
- 12V Converter w/Charger
- LP Tank
- 2-Burner Range
- Microwave
- LP/Electric Refrigerator
- Single-Bowl Sink
- 6-Gallon LP DSI Water Heater
- Rail-Style Cabinet Doors w/Modern Handles
- Overhead Cabinets
- LED Interior Lights
- Shower & Toilet
- Tank Monitor Panel

OPTIONS

- 13,500 A/C Low Pro (required on 180RBT)

- U-Dinette IPO Standard Dinette (181BH only)
- 7 CF Refrigerator (required on 180RBT & must option roof air) (N/A 170RD)
- 24" TV w/Inside/Outside Bracket (160QB, 180TH, 180THT, 190BH only)
- Retractable Screen Wall (toy haulers only)
- Front Window (N/A on toy haulers, 160RBT, 180RBT)
- Wireless Backup Camera System - Observation

OFF-ROAD PACKAGE

- Aluminum Rims w/15" Mud Tires
- Extra Ground Clearance
- Electronically-Controlled Heated Holding Tank
- Double Entry Step (select models)

KZ ADVANTAGE PACKAGE (MANDATORY OPTION)

- EXTERIOR**
- 5/8" T&G Plywood Floor
 - 26" Entry Doors w/Flip-Up Entry Steps
 - 8,000 BTU A/C
 - Power Awning w/LED Light Strip
 - Key-Alike Program for Baggage & Entry Doors

- Aqualon Edge Tent Material
- Folding Grab Handle
- Exterior Speakers
- Spare Tire & Carrier
- 4 - Scissor Style Stabilizer Jacks
- Two-Toned Exterior Metal
- Solar Prep
- Backup Camera Prep
- Nitrogen-Filled Tires

INTERIOR

- 20,000 BTU Furnace
- Plywood Bed Base
- Foot-Flush Toilet
- (2) 6.5" Interior Speakers
- 12V Dual USB Port
- Digital Media Stereo w/Bluetooth & USB Port

KZ CONVENIENCE PACKAGE (MANDATORY OPTION)

EXTERIOR

- Friction Hinge Entry Door
- Double Entry Steps (select models)
- Omnidirectional HDTV Antenna

INTERIOR

- Residential-Grade Linoleum
- Rail-Style Cabinet Doors
- Interior Control Switches on Overhead End Cabinet

Travel Trailers	160QB	160RBT	170RD	180RBT	180TH	180THT	181BH	190BH
UVW (Unloaded Vehicle Weight)*	2,740	2,696	2,800	3,116	3,210	3,330	2,840	3,270
Dry Hitch Weight*	376	336	395	426	440	410	370	390
Dry Axle Weight*	2,364	2,360	2,405	2,690	2,770	2,920	2,470	2,880
NCC (Net Carrying Capacity)	760	804	700	1,384	1,790	1,670	660	1,530
GVWR	3,500	3,500	3,500	4,500	5,000	5,000	3,500	4,800
Interior Height	78"	78"	78"	78"	78"	78"	78"	78"
Exterior Height w/o Roof A/C (unless noted)**	107"	107"	112"	118"	107"	107"	112"	112"
Exterior Width	90"	90"	90"	90"	90"	90"	84"	90"
Exterior Length	21' 10"	18' 10"	21' 10"	21' 3"	21' 7"	21' 7"	20' 6"	23' 2"
Refrigerator (cu. feet)	4	4	3	7	4	4	4	4
Water Heater Cap. (gal. LP w/DSI)	6	6	6	6	6	6	6	6
Fresh Water Cap. (gal.)	20	20	20	20	38	38	20	20
Waste Water Cap. (gal.)	32	24	32	24	32	32	15	32
Gray Water Cap. (gal.)	32	32	32	32	32	32	15	32
LP Gas Cap. (lbs.)	20	20	20	20	20	20	20	20
Furnace BTUs (1,000s)	20	20	20	20	20	20	20	20
Tire Size	14"	14"	14"	13"	15"	15"	14"	14"
Awning	10'	12'	13'	13'	13'	13'	9'	14'

*This weight reflects the rolling average unit weight for each model. Your trailer weight will vary according to optional equipment. **This exterior height is *with roof A/C*.

SPORTSMEN CLASSIC

STANDARDS & OPTIONS

DÉCOR



Kona



CONVENIENCE & SECURITY!

One lock for all applications, and standard industry keys can't open your storage compartments or entry doors.

STANDARDS

- KZ Exclusive Tough Shield .030 Exterior Metal
- R-7 Insulation
- Front Diamond Plate
- Alum-a-Tough® Roofing w/12-Year Limited Warranty
- Tinted Windows
- Radial Tires
- Self-Adjust Electric Brakes
- Rear Bumper w/Sewer Hose Storage
- Digital TV Antenna
- Cable Hookup
- City Water Fill
- 12V Converter w/Charger
- LP Tank
- 2-Burner Range
- Microwave
- LP/Electric Refrigerator
- Single-Bowl Sink
- 6-Gallon LP DSI Water Heater
- Rail-Style Cabinet Doors w/Modern Handles
- Overhead Cabinets
- LED Interior Lights
- Shower & Toilet
- Tank Monitor Panel

OPTIONS

- 13,500 A/C Low Pro (required on 180RBT)

- U-Dinette IPO Standard Dinette (181BH only)
- 7 CF Refrigerator (required on 180RBT & must option roof air) (N/A 170RD)
- 24" TV w/Inside/Outside Bracket (160QB, 180TH, 180THT, 190BH only)
- Retractable Screen Wall (toy haulers only)
- Front Window (N/A on toy haulers, 160RBT, 180RBT)
- Wireless Backup Camera System - Observation

OFF-ROAD PACKAGE

- Aluminum Rims w/15" Mud Tires
- Extra Ground Clearance
- Electronically-Controlled Heated Holding Tank
- Double Entry Step (select models)

KZ ADVANTAGE PACKAGE (MANDATORY OPTION)

- EXTERIOR**
- 5/8" T&G Plywood Floor
 - 26" Entry Doors w/Flip-Up Entry Steps
 - 8,000 BTU A/C
 - Power Awning w/LED Light Strip
 - Key-Alike Program for Baggage & Entry Doors

- Aqualon Edge Tent Material
- Folding Grab Handle
- Exterior Speakers
- Spare Tire & Carrier
- 4 - Scissor Style Stabilizer Jacks
- Two-Toned Exterior Metal
- Solar Prep
- Backup Camera Prep
- Nitrogen-Filled Tires

INTERIOR

- 20,000 BTU Furnace
- Plywood Bed Base
- Foot-Flush Toilet
- (2) 6.5" Interior Speakers
- 12V Dual USB Port
- Digital Media Stereo w/Bluetooth & USB Port

KZ CONVENIENCE PACKAGE (MANDATORY OPTION)

EXTERIOR

- Friction Hinge Entry Door
- Double Entry Steps (select models)
- Omnidirectional HDTV Antenna

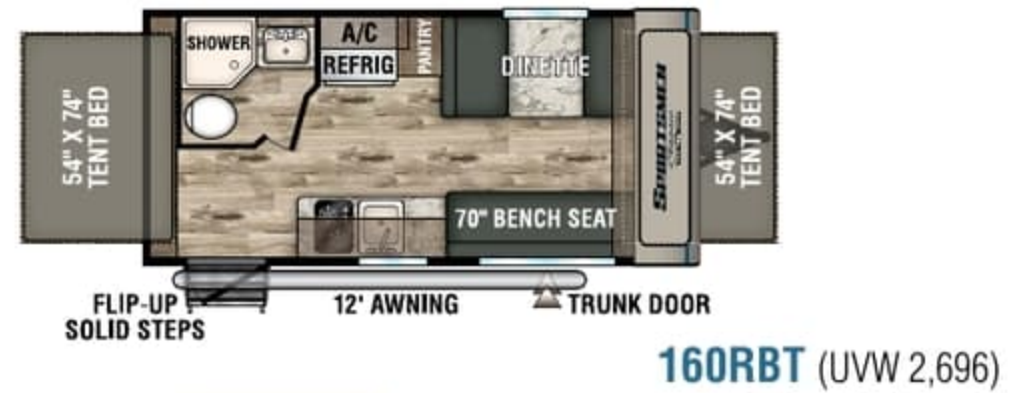
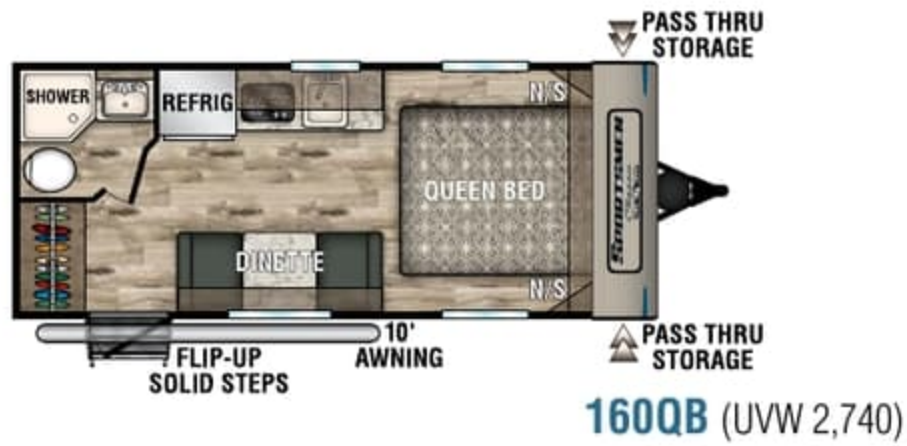
INTERIOR

- Residential-Grade Linoleum
- Rail-Style Cabinet Doors
- Interior Control Switches on Overhead End Cabinet

Travel Trailers	160QB	160RBT	170RD	180RBT	180TH	180THT	181BH	190BH
UVW (Unloaded Vehicle Weight)*	2,740	2,696	2,800	3,116	3,210	3,330	2,840	3,270
Dry Hitch Weight*	376	336	395	426	440	410	370	390
Dry Axle Weight*	2,364	2,360	2,405	2,690	2,770	2,920	2,470	2,880
NCC (Net Carrying Capacity)	760	804	700	1,384	1,790	1,670	660	1,530
GVWR	3,500	3,500	3,500	4,500	5,000	5,000	3,500	4,800
Interior Height	78"	78"	78"	78"	78"	78"	78"	78"
Exterior Height w/o Roof A/C (unless noted)**	107"	107"	112"	118"	107"	107"	112"	112"
Exterior Width	90"	90"	90"	90"	90"	90"	84"	90"
Exterior Length	21' 10"	18' 10"	21' 10"	21' 3"	21' 7"	21' 7"	20' 6"	23' 2"
Refrigerator (cu. feet)	4	4	3	7	4	4	4	4
Water Heater Cap. (gal. LP w/DSI)	6	6	6	6	6	6	6	6
Fresh Water Cap. (gal.)	20	20	20	20	38	38	20	20
Waste Water Cap. (gal.)	32	24	32	24	32	32	15	32
Gray Water Cap. (gal.)	32	32	32	32	32	32	15	32
LP Gas Cap. (lbs.)	20	20	20	20	20	20	20	20
Furnace BTUs (1,000s)	20	20	20	20	20	20	20	20
Tire Size	14"	14"	14"	13"	15"	15"	14"	14"
Awning	10'	12'	13'	13'	13'	13'	9'	14'

*This weight reflects the rolling average unit weight for each model. Your trailer weight will vary according to optional equipment. **This exterior height is *with roof A/C*.

SPORTSMEN CLASSIC STANDARDS & OPTIONS



MARINE-GRADE AQUALON EDGE MATERIAL
 reduces heat gain by 33 percent and is permanently affixed to bunkend door. Tents feature aluminum-latched knuckle hinges, and self-supporting cable system rated to 1,100 pounds. Aqualon Edge boasts a 7-year material warranty.



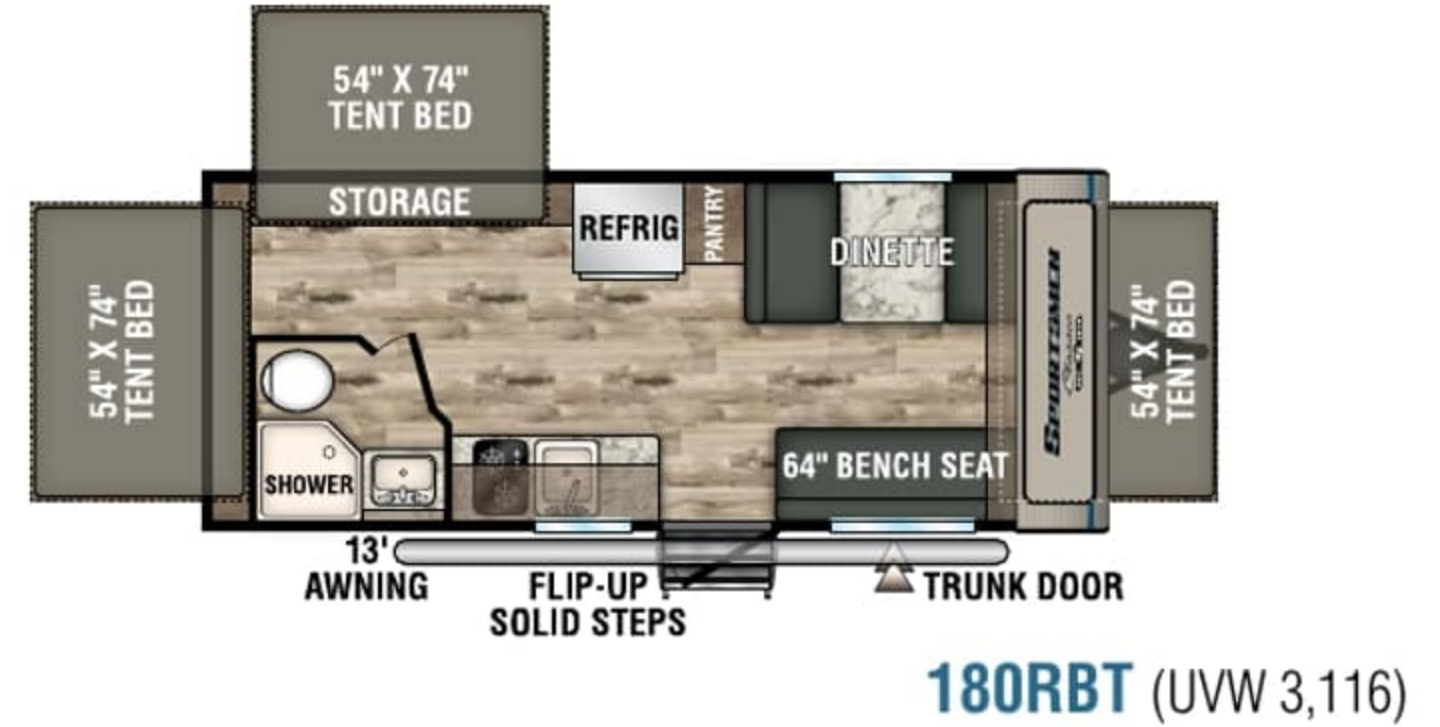
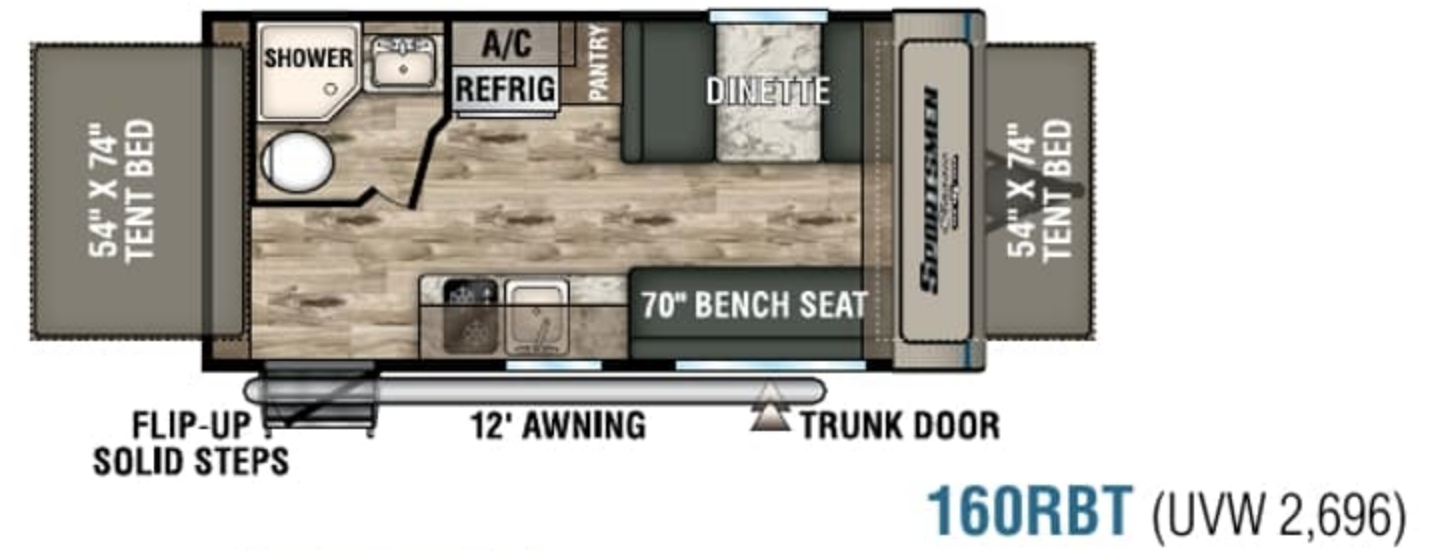
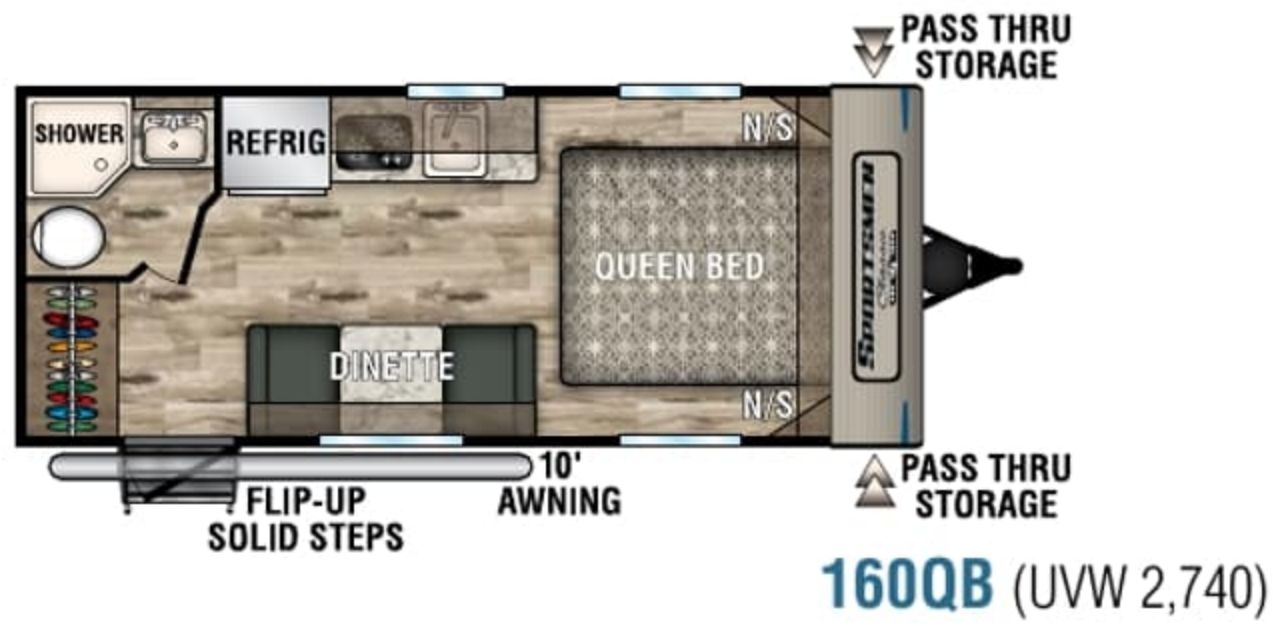
SOLAR PREP



BACKUP CAMERA PRE-WIRE



SCISSOR JACKS keep **CLASSIC** level and secure. Scissors are safe, with better stability and weight distribution.



MARINE-GRADE AQUALON EDGE MATERIAL reduces heat gain by 33 percent and is permanently affixed to bunkend door. Tents feature aluminum-latched knuckle hinges, and self-supporting cable system rated to 1,100 pounds. Aqualon Edge boasts a 7-year material warranty.



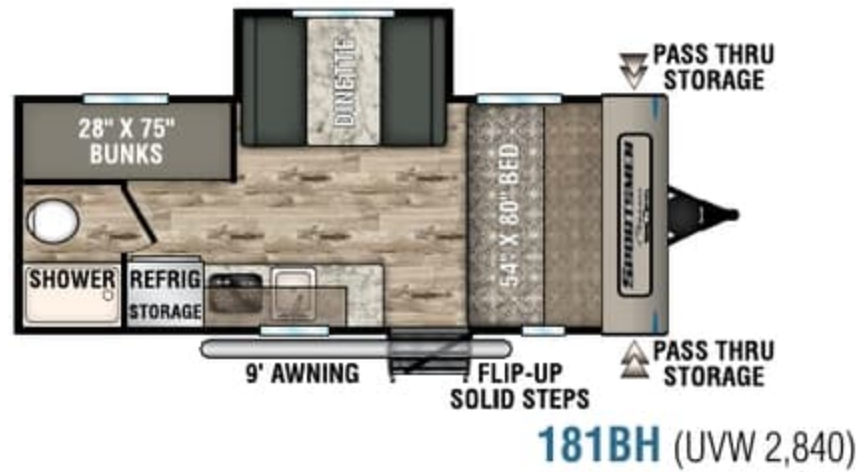
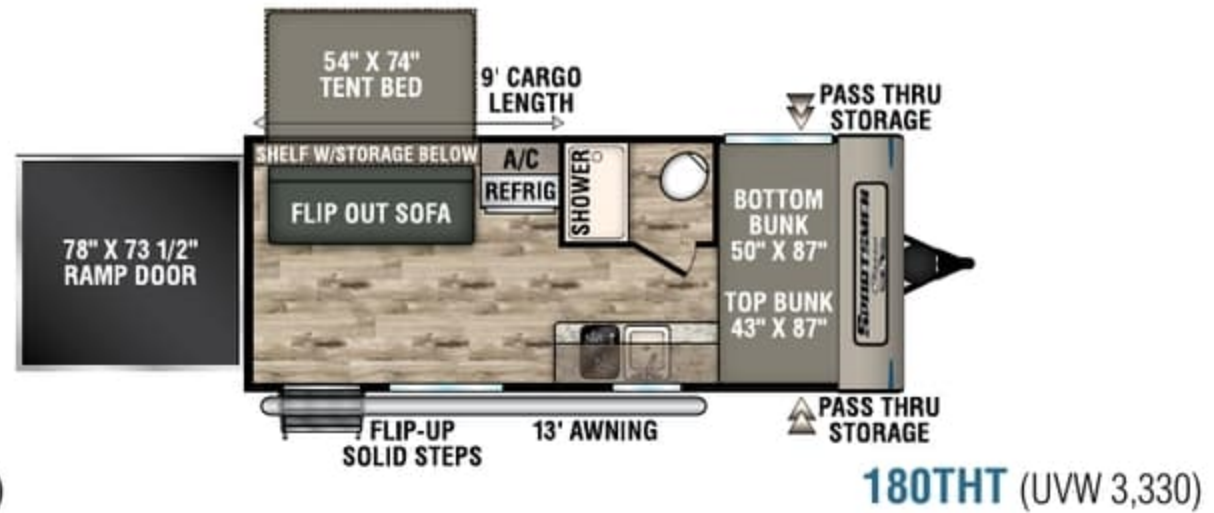
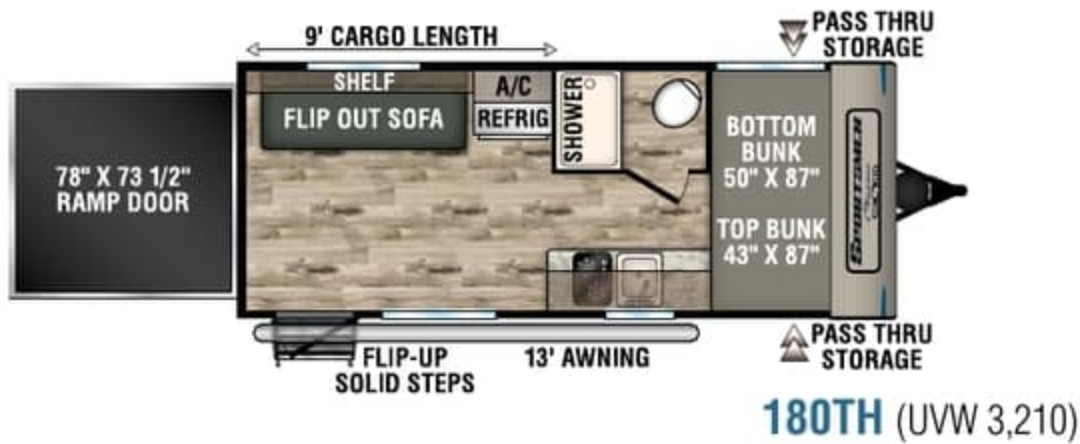
SOLAR PREP



BACKUP CAMERA PRE-WIRE



SCISSOR JACKS keep **CLASSIC** level and secure. Scissors are safe, with better stability and weight distribution.



POWER AWNING extends and retracts in seconds, with an LED light strip for added ambience.



TONGUE & GROOVE PLYWOOD FLOORING

FLIP-UP ENTRY STEP

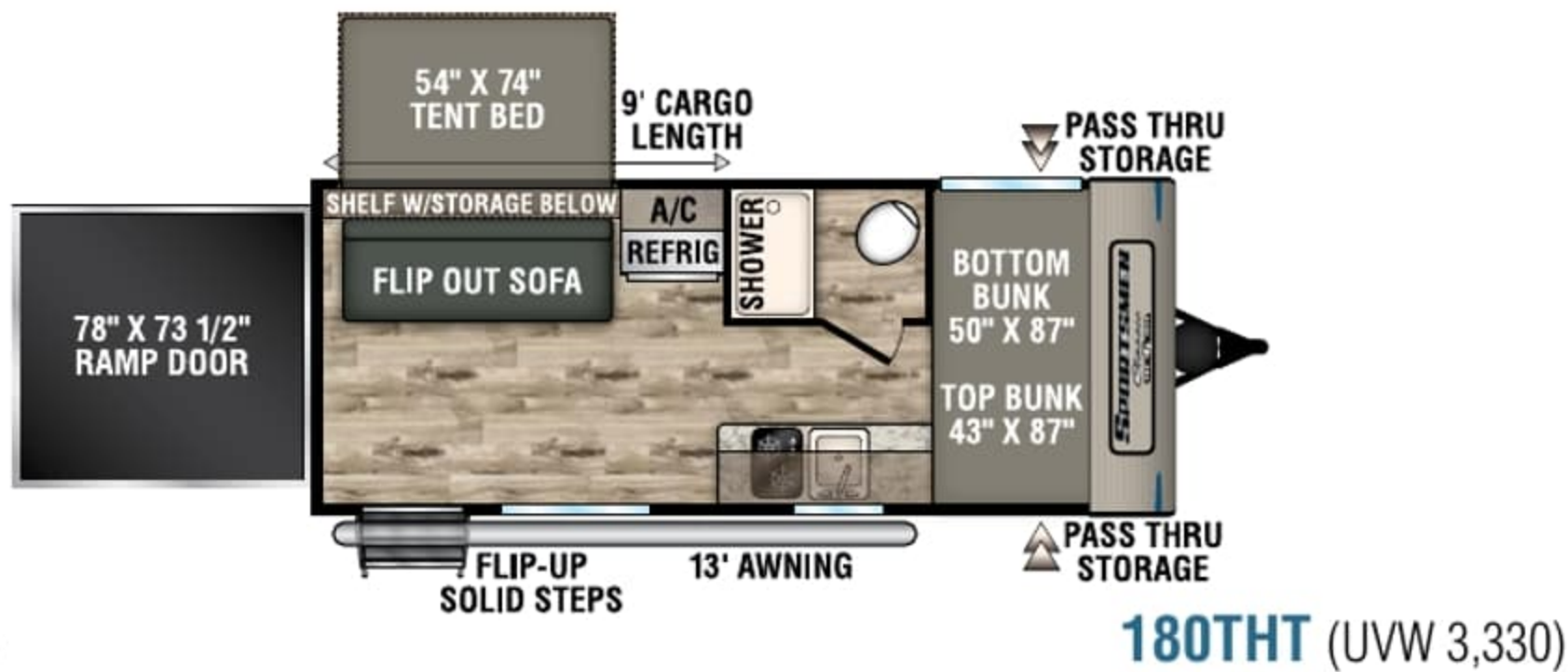
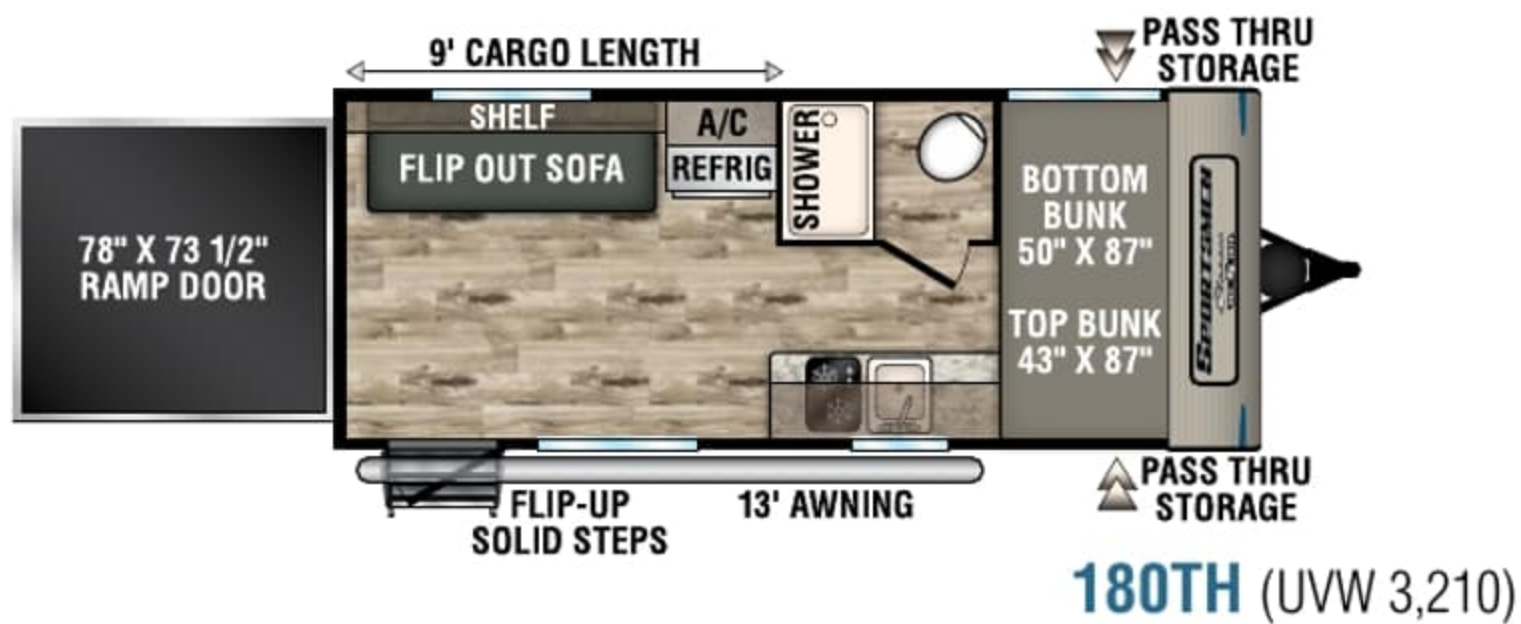
and folding handrail provides solid footing and deploys effortlessly. Extra-wide 26-inch friction-hinge entry door.



OFF-ROAD PACKAGE

includes 15-inch mud tires with aluminum rims, extra ground clearance, an electronically-controlled heated holding tank, and double entry step (Classic only)

EXTERIOR FEATURES



POWER AWNING extends and retracts in seconds, with an LED light strip for added ambience.



TONGUE & GROOVE PLYWOOD FLOORING

FLIP-UP ENTRY STEP

and folding handrail provides solid footing and deploys effortlessly. Extra-wide 26-inch friction-hinge entry door.



OFF-ROAD PACKAGE

includes 15-inch mud tires with aluminum rims, extra ground clearance, an electronically-controlled heated holding tank, and double entry step (Classic only)

EXTERIOR FEATURES

DOWNLOAD YOUR FREE

KZ RV APP TODAY!

Owning and operating an RV has never been easier. Everything you need is now in the palm of your hand.



Track RV Maintenance



Keep RV Service Close



Set Custom Notifications



Reference Checklists for RV Trips



DOWNLOAD NOW!



VISIT KZ-APP.COM TO LEARN MORE.

KZ Recreational Vehicles... *A History in Progress*

Sam King and Daryl Zook built a truck camper in 1972, with founding principles of quality, fairness, courtesy and integrity. Nearly 50 years later, our 625 employees build your recreational vehicles, on our 100+ acre campus in Shipshewana, IN.

When you communicate with KZ, you'll always be speaking with someone who takes you seriously and treats you with respect. Thank you for considering KZ, and welcome to our world-wide family of satisfied customers!



Dealer:



985 N 900 W • Shipshewana, IN 46565
E-mail kz@kz-rv.com • www.kz-rv.com

RVIA

Due to continual research and advances, manufacturer reserves the right to change specifications, design, price and equipment without notice, and assumes no responsibility for any error in this literature. Some items shown are not included as standard or optional equipment. ©2019KZ | 01/17/19 | 60M

DOWNLOAD YOUR FREE

KZ RV APP TODAY!

Owning and operating an RV has never been easier. Everything you need is now in the palm of your hand.



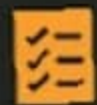
Track RV Maintenance



Keep RV Service Close



Set Custom Notifications



Reference Checklists for RV Trips



DOWNLOAD NOW!



VISIT KZ-APP.COM TO LEARN MORE.

KZ Recreational Vehicles... *A History in Progress*

Sam King and Daryl Zook built a truck camper in 1972, with founding principles of quality, fairness, courtesy and integrity. Nearly 50 years later, our 625 employees build your recreational vehicles, on our 100+ acre campus in Shipshewana, IN.

When you communicate with KZ, you'll always be speaking with someone who takes you seriously and treats you with respect. Thank you for considering KZ, and welcome to our world-wide family of satisfied customers!



Dealer:



985 N 900 W • Shipshewana, IN 46565
E-mail kz@kz-rv.com • www.kz-rv.com

RVIA

Due to continual research and advances, manufacturer reserves the right to change specifications, design, price and equipment without notice, and assumes no responsibility for any error in this literature. Some items shown are not included as standard or optional equipment. ©2019KZ | 01/17/19 | 60M