

travel  
trailers  
& toy  
haulers

**SPORTSMEN SE, LE & LE TOY HAULERS**

travel trailers & toy haulers

**SPORTSMEN SE**  
**SPORTSMEN LE**

**KZ**  
Est. 1972





**SPORTSMEN SE, LE & LE TOY HAULERS**

travel trailers & toy haulers

travel  
trailers  
& toy  
haulers

**SPORTSMEN SE**  
**SPORTSMEN LE**

**KZ**  
Est. 1972





## NEW SPORTSMEN SE... VALUE & STYLE

Take family camping to a fresh, innovative level with the affordable all-new **SPORTSMEN SE**. It's a budget-friendly version of the popular Sportsmen LE, KZ's longtime fan favorite, with many of the same value-packed features.

With elbow room and the comforts of home, **SPORTSMEN SE** keeps everybody happy, comfortable and plugged in, with a variety of great floorplans designed for making memories.



230BHSE : Walnut décor



Walnut

### DINETTE >

SE's spacious window-view dinette converts easily to comfortable sleep space. (240FBSE shown)



### REAL KITCHEN >

Three-burner cooktop with glass cover and oven, range hood and fan, microwave with turntable, and 10 CU FT 12V dual-temp-control refrigerator complete the kitchen.

### < FULL BATH

Vanity with mirror, foot-flush toilet, shower surround, power vent and handy monitor panel. (240FBSE shown)



## NEW SPORTSMEN SE... VALUE & STYLE

Take family camping to a fresh, innovative level with the affordable all-new **SPORTSMEN SE**. It's a budget-friendly version of the popular Sportsmen LE, KZ's longtime fan favorite, with many of the same value-packed features.

With elbow room and the comforts of home, **SPORTSMEN SE** keeps everybody happy, comfortable and plugged in, with a variety of great floorplans designed for making memories.



230BHSE : Walnut décor



### DINETTE

SE's spacious window-view dinette converts easily to comfortable sleep space. (240FBSE shown)



### REAL KITCHEN

Three-burner cooktop with glass cover and oven, range hood and fan, microwave with turntable, and 10 CU FT 12V dual-temp-control refrigerator complete the kitchen.

### FULL BATH

Vanity with mirror, foot-flush toilet, shower surround, power vent and handy monitor panel. (240FBSE shown)





230BHSE : Walnut décor

◀ **BUNKHOUSE... AND THEN SOME!**

Several SEs offer extra-large corner double bunks with double window views, lighting, electrical outlet, plus ample storage space below.

✔ **SLUMBER ZONE**

Reversible quilted comforter, tinted windows with valances and mini blinds, nightstands, overhead storage shelf and mirrored full-length his-and-hers closets provide a good night's rest. (240FBSE shown)



◀ **WIDE-OPEN SPACES**

Numerous thoughtful floorplans all offer generous, fully-appointed bath spaces with storage galore. (240FBSE sofa; 230BHSE shower)





◀ **BUNKHOUSE... AND THEN SOME!**

Several SEs offer extra-large corner double bunks with double window views, lighting, electrical outlet, plus ample storage space below.

✔ **SLUMBER ZONE**

Reversible quilted comforter, tinted windows with valances and mini blinds, nightstands, overhead storage shelf and mirrored full-length his-and-hers closets provide a good night's rest. (240FBSE shown)



◀ **WIDE-OPEN SPACES**

Numerous thoughtful floorplans all offer generous, fully-appointed bath spaces with storage galore. (240FBSE sofa; 230BHSE shower)

230BHSE : Walnut décor



**STANDARDS**

- KZ Exclusive Tough Shield Exterior Metal
- 1-Piece Seamless Roof w/SuperFlex® Roofing Material
- 3/8" Fully Walk-On Roof Decking
- Radius Truss Roof Rafters
- Awning w/Drip Rail & Spouts
- R-7 Insulation
- Radius Entry Door
- Extra-Large Radius Baggage Doors
- Tinted Windows
- Diamond Plate Rock Guard
- Rear Bumper w/Sewer Hose Storage
- (2) 20# LP Bottles
- 30 AMP Service
- Cable Hookup
- Digital TV Antenna w/Booster
- 13,500 BTU A/C
- Water Heater Bypass Kit
- 3-Burner Cooktop
- Range Hood w/12V Light & Exhaust Fan
- Microwave w/Turntable

- Large Overhead Cabinets
- Roller Ball Bearing Drawer Guides
- LED Interior Lighting
- Linoleum Throughout
- Mini Blinds
- Monitor Panel
- Power Vent in Bath
- Reversible Quilted Comforter
- Shower Surround

**OPTIONS**

- 15,000 BTU A/C IPO 13,500 BTU A/C
- 7 CU FT Gas/Electric Refrigerator IPO 10 CU FT 12V Refrigerator
- Outside Kitchen (271BHSE, 301BHSE)

**KZ ADVANTAGE PACKAGE (MANDATORY OPTION)****EXTERIOR**

- New Aerodynamic Front Profile
- Three-Toned Exterior Metal

- Friction-Hinged Entry Door
- Key-Alike Program for Entry & Baggage Doors
- Exterior Speakers
- Spare Tire & Carrier
- Nitrogen-Filled Tires
- (4) Stabilizer Jacks
- LP Bottle Cover
- Backup Camera Prep
- Solar Prep
- Battery Disconnect

**INTERIOR**

- Jackknife Sofa w/Center Console
- Drop-In Cooktop w/Glass Cover & Oven
- 12V Dual USB Port in LR
- Plywood Bed Base
- Upper Bunk Windows (select floorplans)
- Seamless Countertops w/Deep Undermount Stainless Steel Kitchen Sink
- Foot-Flush Toilet
- (2) 6.5" Interior Speakers

- Multimedia Stereo w/DVD
- Bluetooth & NFC Wireless Connectivity
- Wider Pocket/Passage Interior Doors

**KZ CONVENIENCE PACKAGE (MANDATORY OPTION)****EXTERIOR**

- Power Awning w/LED Light Strip
- Magnetic Catches for Baggage Doors
- Battery Disconnect Switch
- Omnidirectional HDTV Antenna
- LED Lights in Exterior Speakers

**INTERIOR**

- Residential-Grade Linoleum
- 10 CU FT Refrigerator 12V w/Dual Temperature Control
- Stainless Steel Residential Kitchen Faucet
- Interior Control Switches on Overhead End Cabinet
- Dark Accent Trim on Corners/Entry Doors
- Electric Outlet in Bunk Area

Sportsmen SE Travel Trailers	220RDSE	230BHSE	240FBSE	260BHSE	271BHSE	301BHSE
UVW (Unloaded Vehicle Weight)*	4,320	4,310	4,460	4,710	5,290	6,100
Dry Hitch Weight*	530	600	520	600	710	630
Dry Axle Weight*	3,790	3,710	3,940	4,110	4,580	5,470
NCC (Net Carrying Capacity)	1,680	2,690	2,540	2,290	1,710	1,900
GVWR	6,000	7,000	7,000	7,000	7,000	8,000
Interior Height	78"	78"	78"	78"	78"	78"
Exterior Height w/ A/C	10' 4"	10' 4"	10' 4"	10' 8"	10' 7"	10' 8"
Exterior Width	96"	96"	96"	96"	96"	96"
Exterior Length	26' 2"	25' 5"	26' 4"	30' 6"	31' 3"	32' 8"
Refrigerator (cu. feet)	10	10	10	10	10	10
Water Heater Cap. (gal. G/E w/DSI)	6	6	6	6	6	6
Fresh Water Cap. (gal.)	38	38	38	38	38	38
Waste Water Cap. (gal.)	32	32	32	32	32	32
Gray Water Cap. (gal.)	32	32	32	32	32	32
LP Gas Cap. (lbs.)	40	40	40	40	40	40
Furnace BTUs (1,000s)	20	20	30	30	30	30
Tire Size	14"	14"	14"	14"	14"	15"
Awning	16'	14'	14'	15'	20'	16'

\*This weight reflects the rolling average unit weight for each model. Your trailer weight will vary according to optional equipment.



**STANDARDS**

- KZ Exclusive Tough Shield Exterior Metal
- 1-Piece Seamless Roof w/SuperFlex® Roofing Material
- 3/8" Fully Walk-On Roof Decking
- Radius Truss Roof Rafters
- Awning w/Drip Rail & Spouts
- R-7 Insulation
- Radius Entry Door
- Extra-Large Radius Baggage Doors
- Tinted Windows
- Diamond Plate Rock Guard
- Rear Bumper w/Sewer Hose Storage
- (2) 20# LP Bottles
- 30 AMP Service
- Cable Hookup
- Digital TV Antenna w/Booster
- 13,500 BTU A/C
- Water Heater Bypass Kit
- 3-Burner Cooktop
- Range Hood w/12V Light & Exhaust Fan
- Microwave w/Turntable

- Large Overhead Cabinets
- Roller Ball Bearing Drawer Guides
- LED Interior Lighting
- Linoleum Throughout
- Mini Blinds
- Monitor Panel
- Power Vent in Bath
- Reversible Quilted Comforter
- Shower Surround

**OPTIONS**

- 15,000 BTU A/C IPO 13,500 BTU A/C
- 7 CU FT Gas/Electric Refrigerator IPO 10 CU FT 12V Refrigerator
- Outside Kitchen (271BHSE, 301BHSE)

**KZ ADVANTAGE PACKAGE  
(MANDATORY OPTION)****EXTERIOR**

- New Aerodynamic Front Profile
- Three-Toned Exterior Metal

- Friction-Hinged Entry Door
- Key-Alike Program for Entry & Baggage Doors
- Exterior Speakers
- Spare Tire & Carrier
- Nitrogen-Filled Tires
- (4) Stabilizer Jacks
- LP Bottle Cover
- Backup Camera Prep
- Solar Prep
- Battery Disconnect

**INTERIOR**

- Jackknife Sofa w/Center Console
- Drop-In Cooktop w/Glass Cover & Oven
- 12V Dual USB Port in LR
- Plywood Bed Base
- Upper Bunk Windows (select floorplans)
- Seamless Countertops w/Deep Undermount Stainless Steel Kitchen Sink
- Foot-Flush Toilet
- (2) 6.5" Interior Speakers

- Multimedia Stereo w/DVD
- Bluetooth & NFC Wireless Connectivity
- Wider Pocket/Passage Interior Doors

**KZ CONVENIENCE PACKAGE  
(MANDATORY OPTION)****EXTERIOR**

- Power Awning w/LED Light Strip
- Magnetic Catches for Baggage Doors
- Battery Disconnect Switch
- Omnidirectional HDTV Antenna
- LED Lights in Exterior Speakers

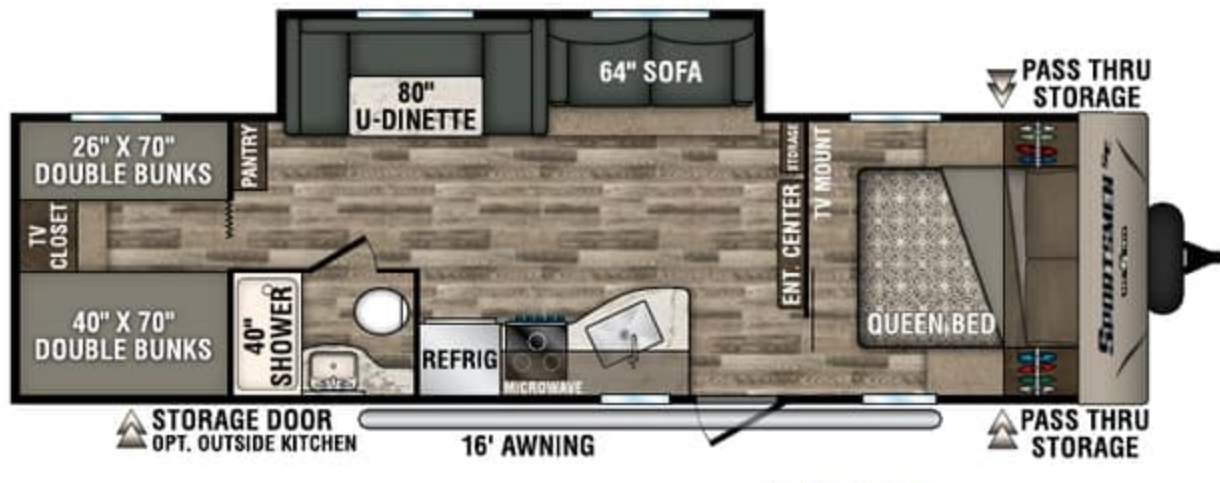
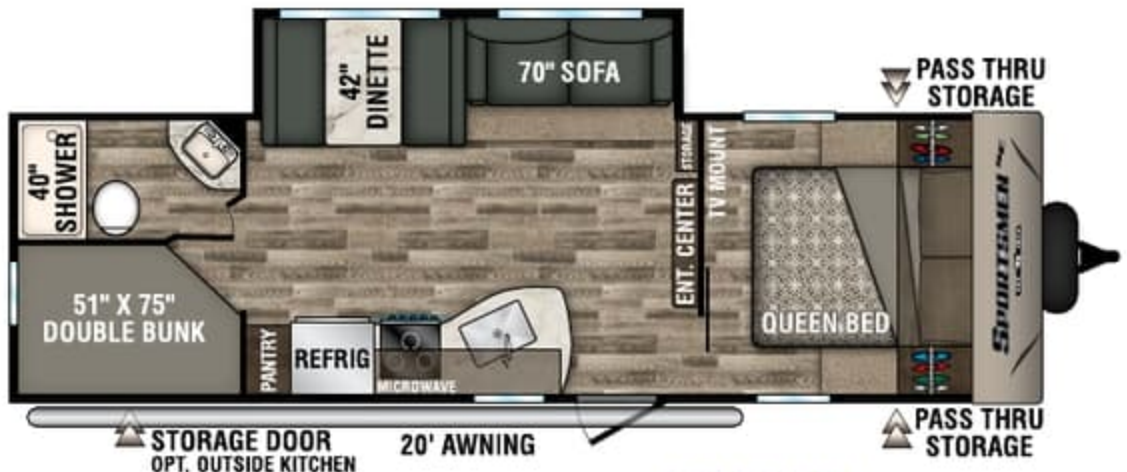
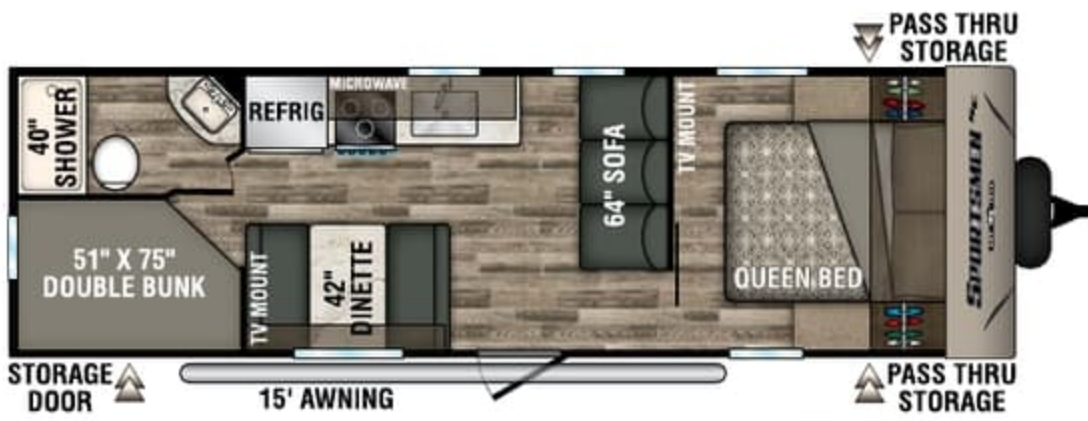
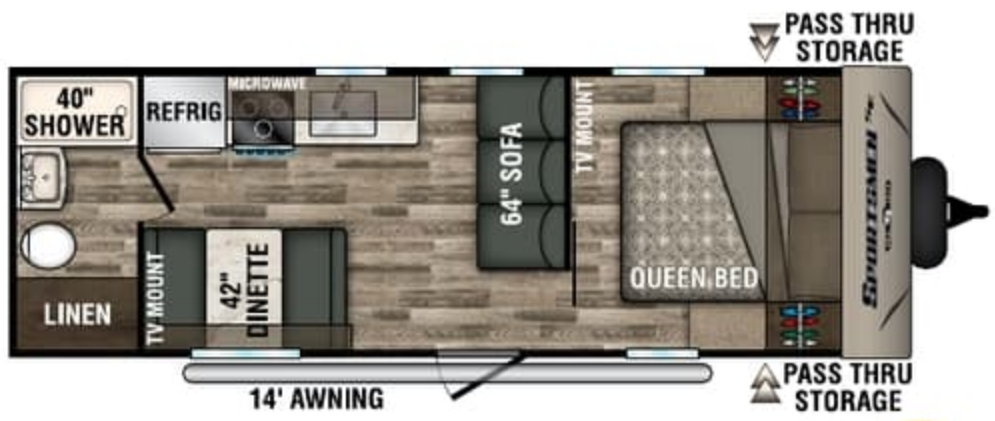
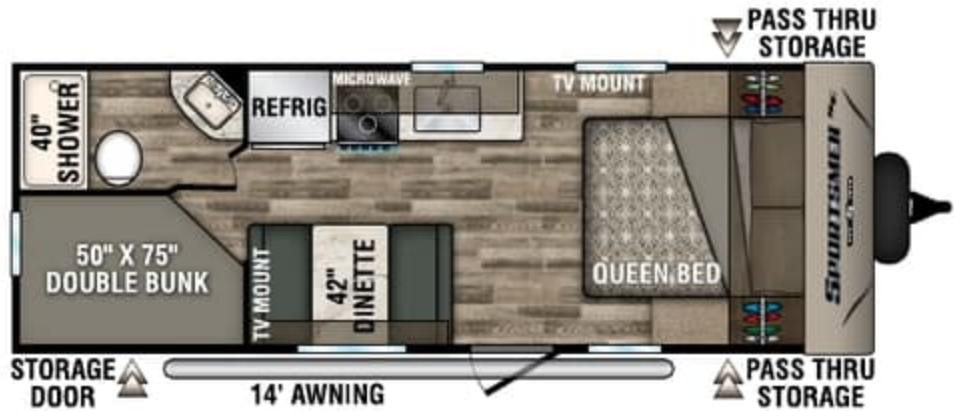
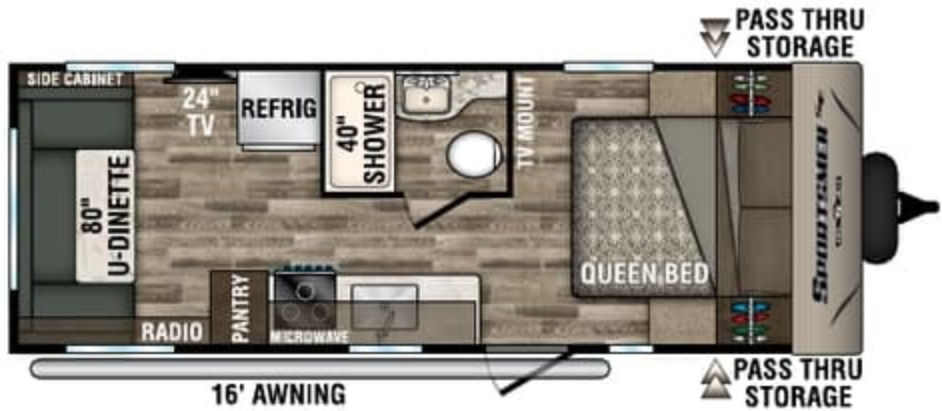
**INTERIOR**

- Residential-Grade Linoleum
- 10 CU FT Refrigerator 12V w/Dual Temperature Control
- Stainless Steel Residential Kitchen Faucet
- Interior Control Switches on Overhead End Cabinet
- Dark Accent Trim on Corners/Entry Doors
- Electric Outlet in Bunk Area

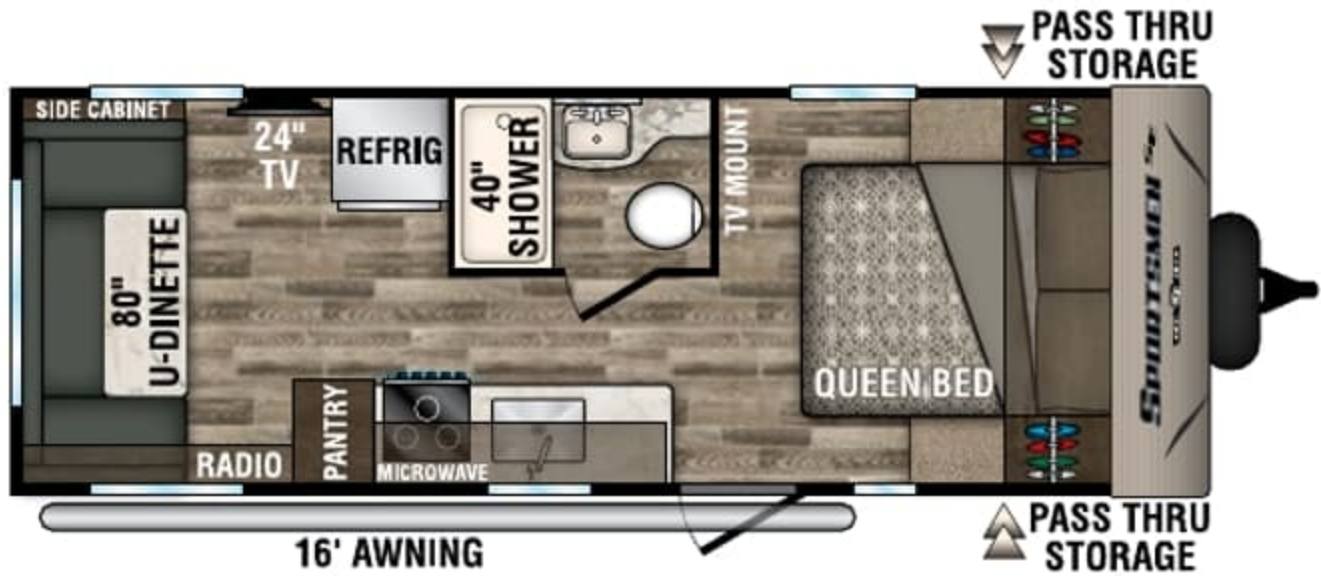
Sportsmen SE Travel Trailers	220RDSE	230BHSE	240FBSE	260BHSE	271BHSE	301BHSE
UVW (Unloaded Vehicle Weight)*	4,320	4,310	4,460	4,710	5,290	6,100
Dry Hitch Weight*	530	600	520	600	710	630
Dry Axle Weight*	3,790	3,710	3,940	4,110	4,580	5,470
NCC (Net Carrying Capacity)	1,680	2,690	2,540	2,290	1,710	1,900
GVWR	6,000	7,000	7,000	7,000	7,000	8,000
Interior Height	78"	78"	78"	78"	78"	78"
Exterior Height w/ A/C	10' 4"	10' 4"	10' 4"	10' 8"	10' 7"	10' 8"
Exterior Width	96"	96"	96"	96"	96"	96"
Exterior Length	26' 2"	25' 5"	26' 4"	30' 6"	31' 3"	32' 8"
Refrigerator (cu. feet)	10	10	10	10	10	10
Water Heater Cap. (gal. G/E w/DSI)	6	6	6	6	6	6
Fresh Water Cap. (gal.)	38	38	38	38	38	38
Waste Water Cap. (gal.)	32	32	32	32	32	32
Gray Water Cap. (gal.)	32	32	32	32	32	32
LP Gas Cap. (lbs.)	40	40	40	40	40	40
Furnace BTUs (1,000s)	20	20	30	30	30	30
Tire Size	14"	14"	14"	14"	14"	15"
Awning	16'	14'	14'	15'	20'	16'

\*This weight reflects the rolling average unit weight for each model. Your trailer weight will vary according to optional equipment.

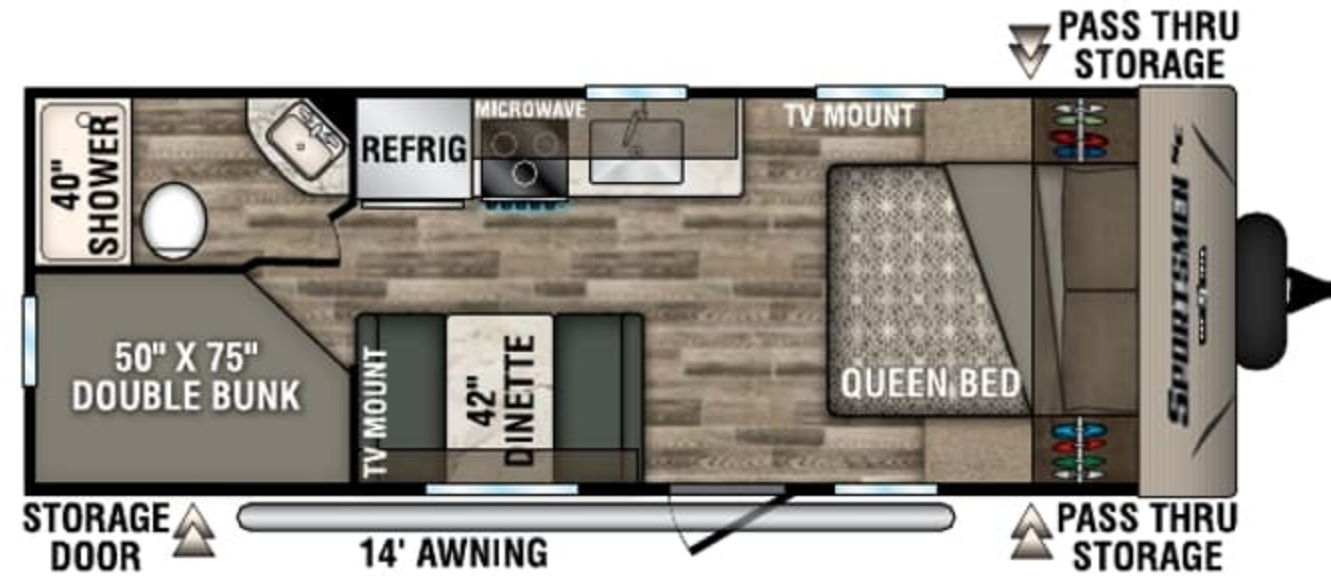




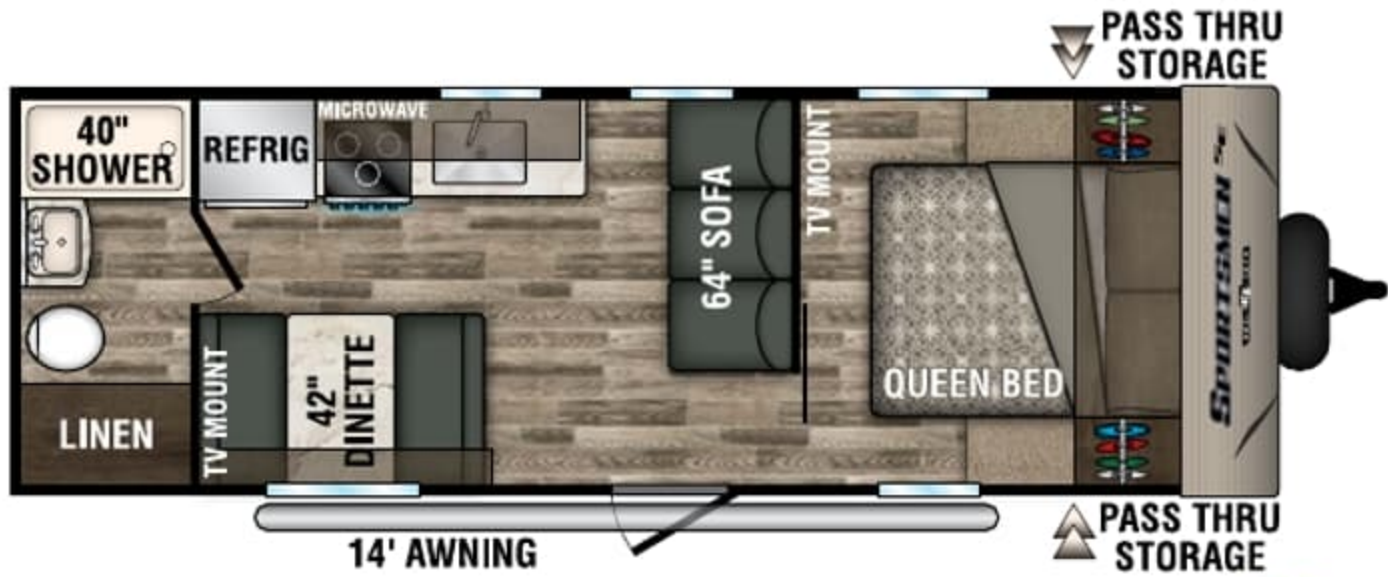




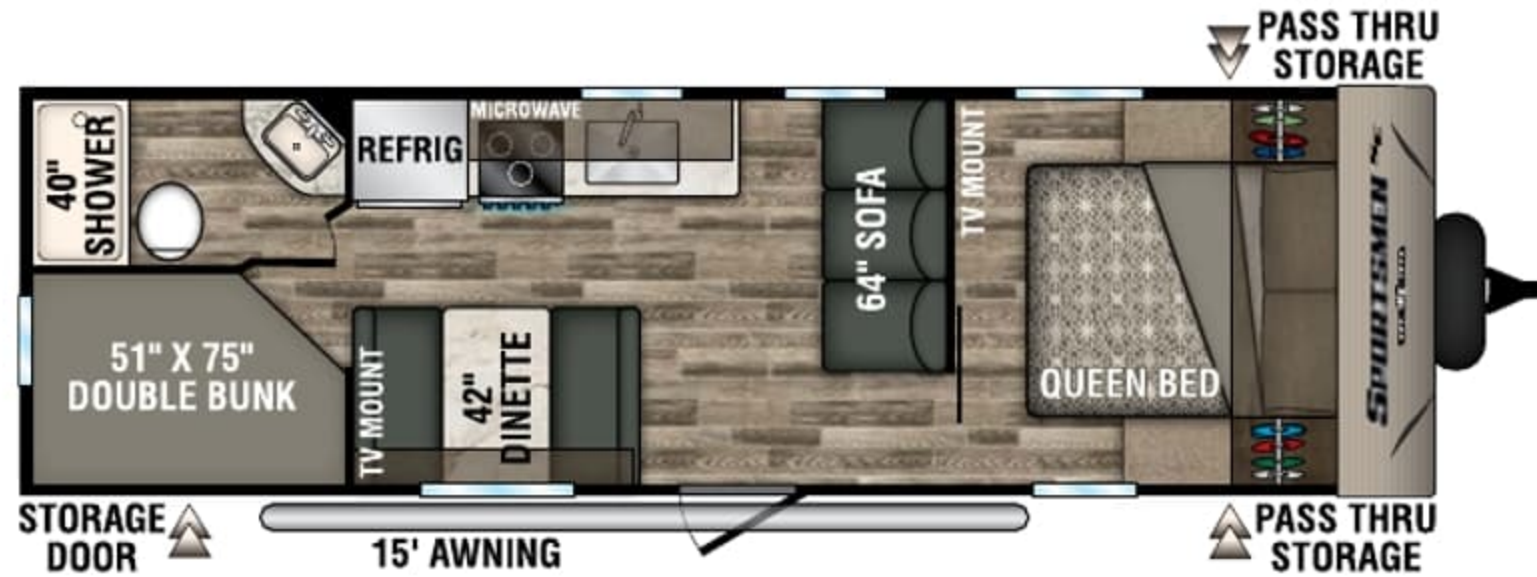
**220RDSE** NEW



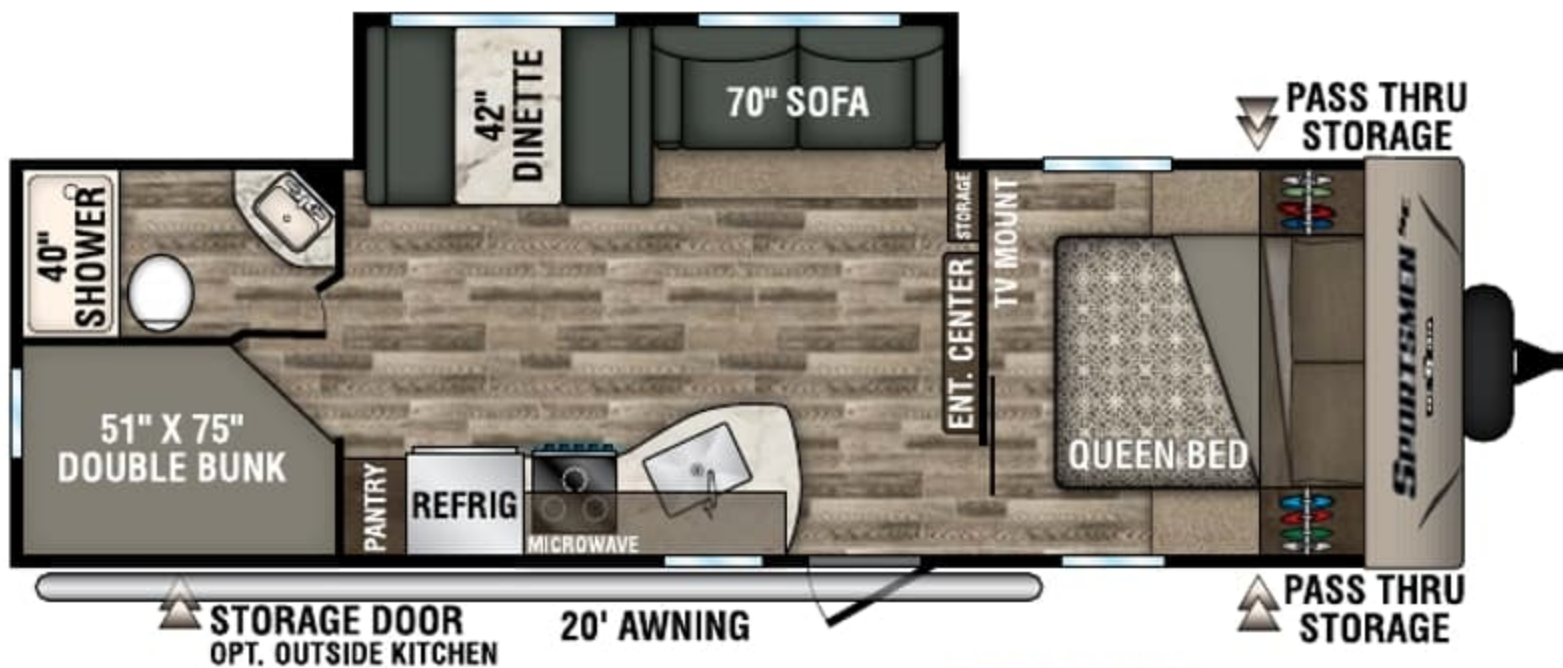
**230BHSE** NEW



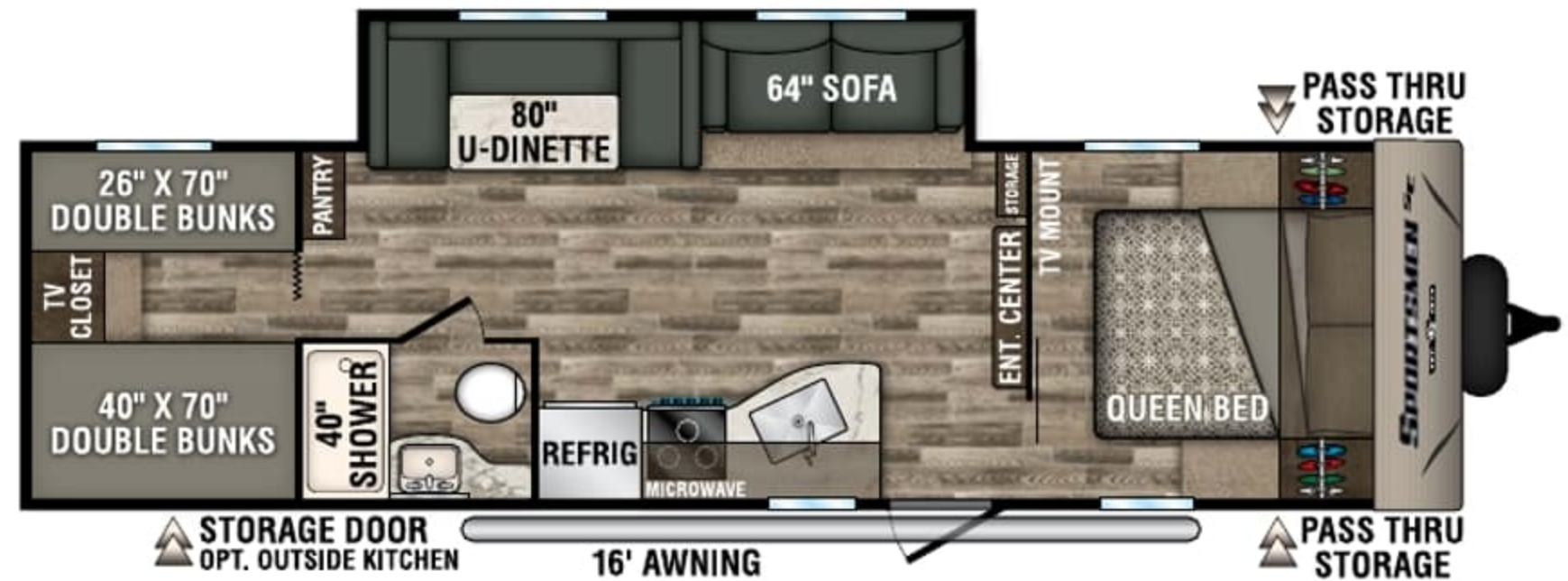
**240FBSE** NEW



**260BHSE**



**271BHSE**



**301BHSE**



# YOUR HOME AWAY FROM HOME

**SPORTSMEN LE** is the most popular series in our affordable Sportsmen camping lineup, with numerous floorplans, all including slideouts and half with bunkhouse designs. A residential kitchen, all the best entertainment features, outside shower and stepped-up décor add to the appeal, and the flip-up entry step provides solid footing.

Let Sportsmen take care of the quality, so you can focus on quality time with your family.



291BHLE : Walnut décor

Entertainment center



**FAMILY LIVING** ➤ Oversized corner double bunks with sturdy ladder, privacy curtain, double windows, electric outlet & storage below. LE's 80-inch slideout dinette accommodates everyone comfortably. (291BHLE shown)



◀ **SMART STORAGE** ▶ Deep pantry with retention-lipped shelving keeps the kitchen stocked, and two 36-inch removable all-purpose plastic bins stow securely under the dinette seats. (291BHLE shown)

⬆ **WARM & INVITING** Relax in comfort and style, with the cozy optional 30-inch fireplace, LED TV, multimedia stereo w/DVD, Bluetooth & NFC wireless connectivity, 6.5-inch speakers and cable hookup.

DÉCOR  
Walnut



# YOUR HOME AWAY FROM HOME

**SPORTSMEN LE** is the most popular series in our affordable Sportsmen camping lineup, with numerous floorplans, all including slideouts and half with bunkhouse designs. A residential kitchen, all the best entertainment features, outside shower and stepped-up décor add to the appeal, and the flip-up entry step provides solid footing.

Let Sportsmen take care of the quality, so you can focus on quality time with your family.



291BHLE : Walnut décor



Entertainment center



### FAMILY LIVING

Oversized corner double bunks with sturdy ladder, privacy curtain, double windows, electric outlet & storage below. LE's 80-inch slideout dinette accommodates everyone comfortably. (291BHLE shown)



### SMART STORAGE

Deep pantry with retention-lipped shelving keeps the kitchen stocked, and two 36-inch removable all-purpose plastic bins stow securely under the dinette seats. (291BHLE shown)

### WARM & INVITING

Relax in comfort and style, with the cozy optional 30-inch fireplace, LED TV, multimedia stereo w/DVD, Bluetooth & NFC wireless connectivity, 6.5-inch speakers and cable hookup.

DÉCOR

Walnut





Well-designed residential kitchens

281BHKLE : Walnut décor



### ✔ TWO-DOOR REFRIGERATOR

Shown with optional 10 CU FT 12V refrigerator with temp controls, top freezer, deep door shelves and veggie bin. (281BHKLE shown)

### ✔ CHEERY & BRIGHT

LED interior lighting, 64-inch sofa, residential-grade linoleum, 12V dual USB port in living area, two 6.5-inch speakers and wider doorways throughout. (281BHKLE shown)



### ✔ COOKING LIKE HOME ✔

Stainless steel sink with high-rise faucet, three-burner drop-in gas cooktop with glass cover that adds counter space, and built-in oven with LED-accent knobs. (281BHKLE shown)



### ✔ WINDOW-VIEW KITCHENS

Kitchens include seamless counters, microwave with turntable, range hood with 12V light and exhaust fan. Entertainment centers include stylish décor accents.





Well-designed residential kitchens

281BHKLE : Walnut décor



### ✔ TWO-DOOR REFRIGERATOR

Shown with optional 10 CU FT 12V refrigerator with temp controls, top freezer, deep door shelves and veggie bin. (281BHKLE shown)

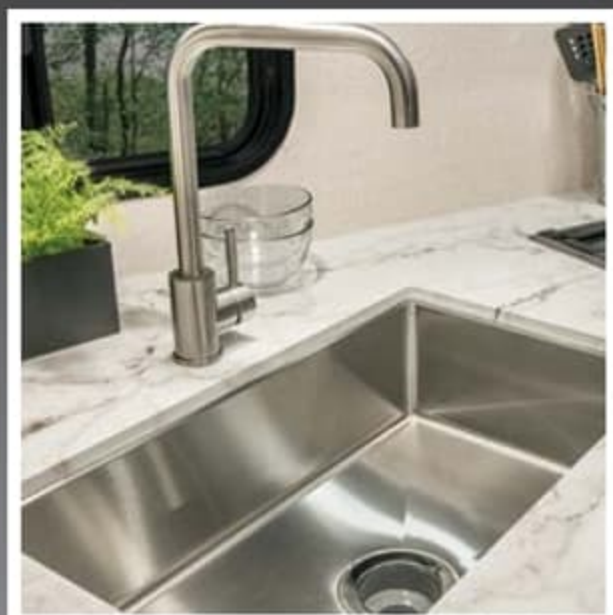
### ✔ CHEERY & BRIGHT

LED interior lighting, 64-inch sofa, residential-grade linoleum, 12V dual USB port in living area, two 6.5-inch speakers and wider doorways throughout. (281BHKLE shown)



### ✔ COOKING LIKE HOME ✔

Stainless steel sink with high-rise faucet, three-burner drop-in gas cooktop with glass cover that adds counter space, and built-in oven with LED-accent knobs. (281BHKLE shown)



### ✔ WINDOW-VIEW KITCHENS

Kitchens include seamless counters, microwave with turntable, range hood with 12V light and exhaust fan. Entertainment centers include stylish décor accents.





231BHKLE



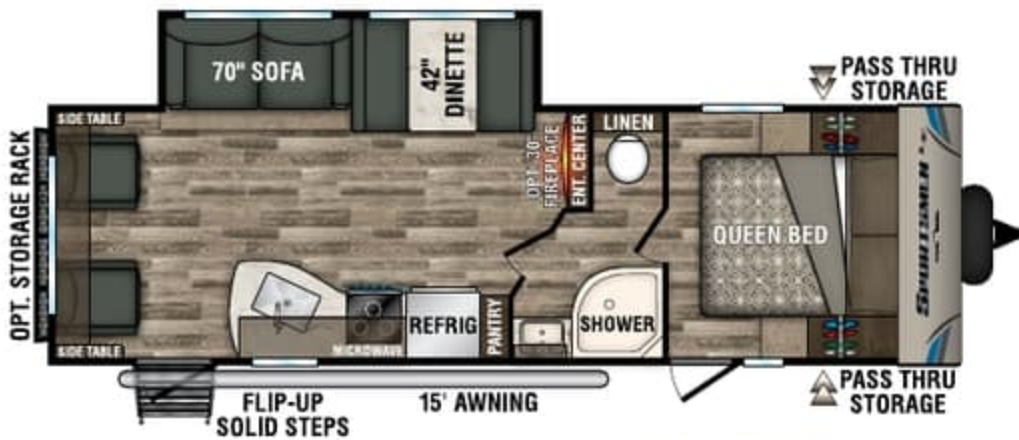
241RKLE **NEW**



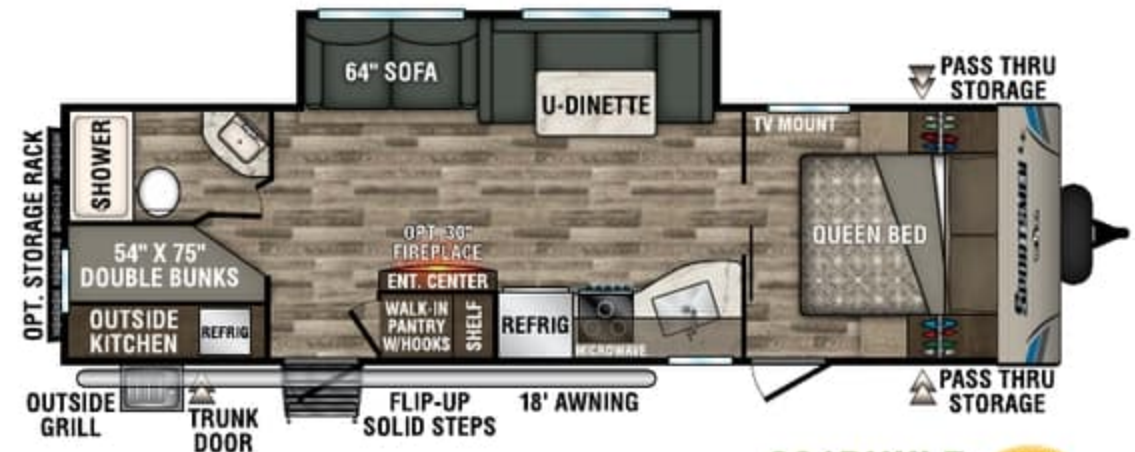
241RLLE



261BHKLE **NEW**



261RLLE



281BHKLE **NEW**





231BHKLE



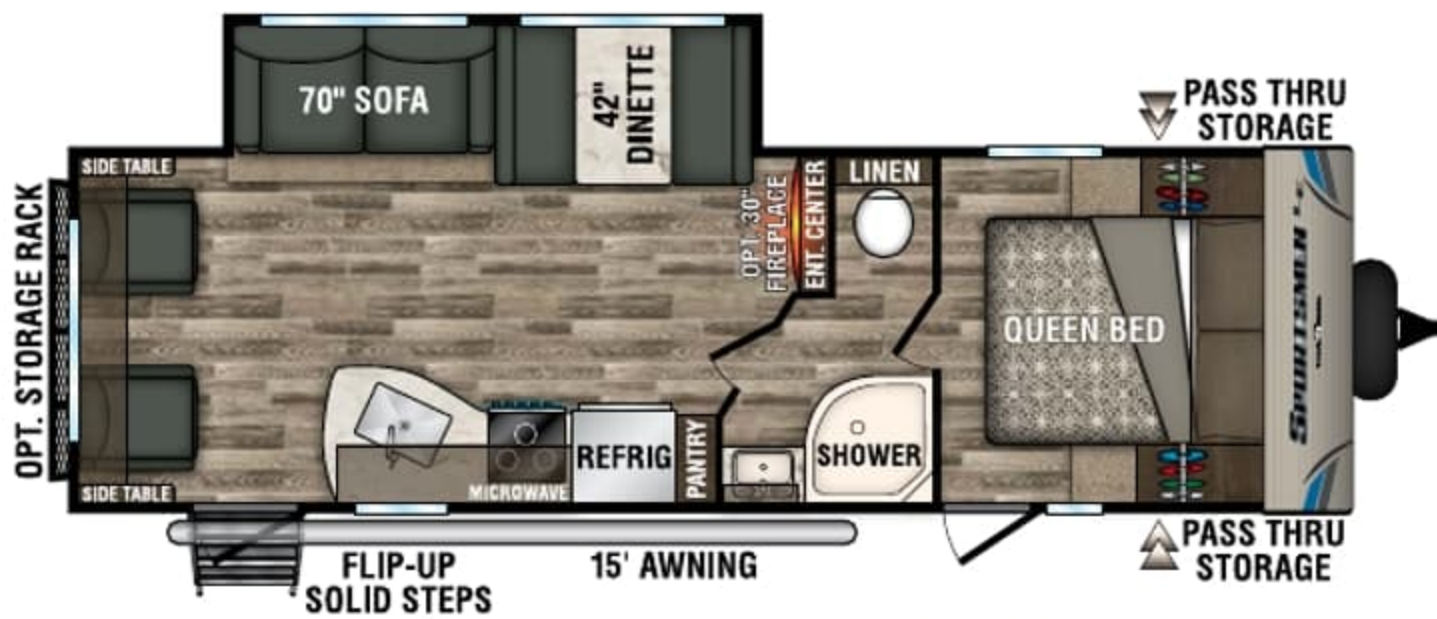
241RKLE **NEW**



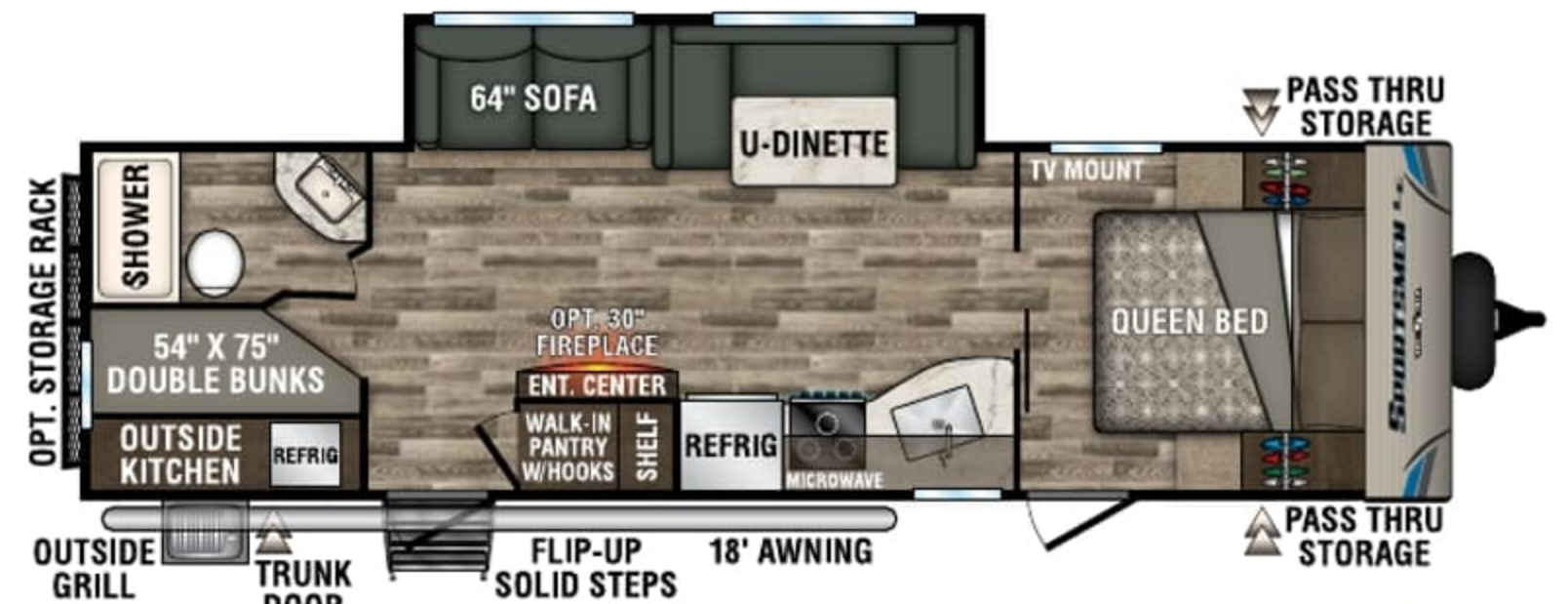
241RLLE



261BHKLE **NEW**



261RLLE



281BHKLE **NEW**





291BHLE



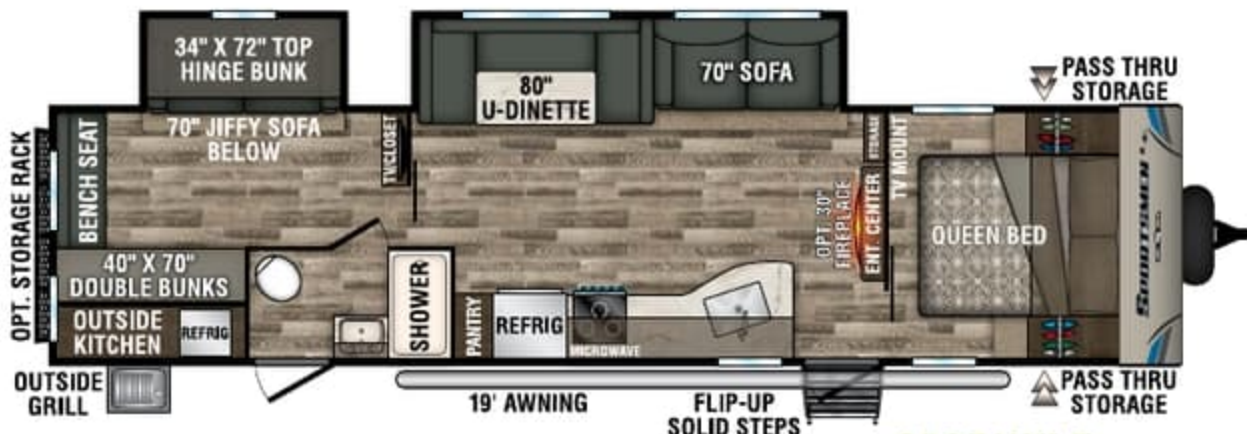
291RKLE



292RLLE



322BHKLE **NEW**



332BHKLE

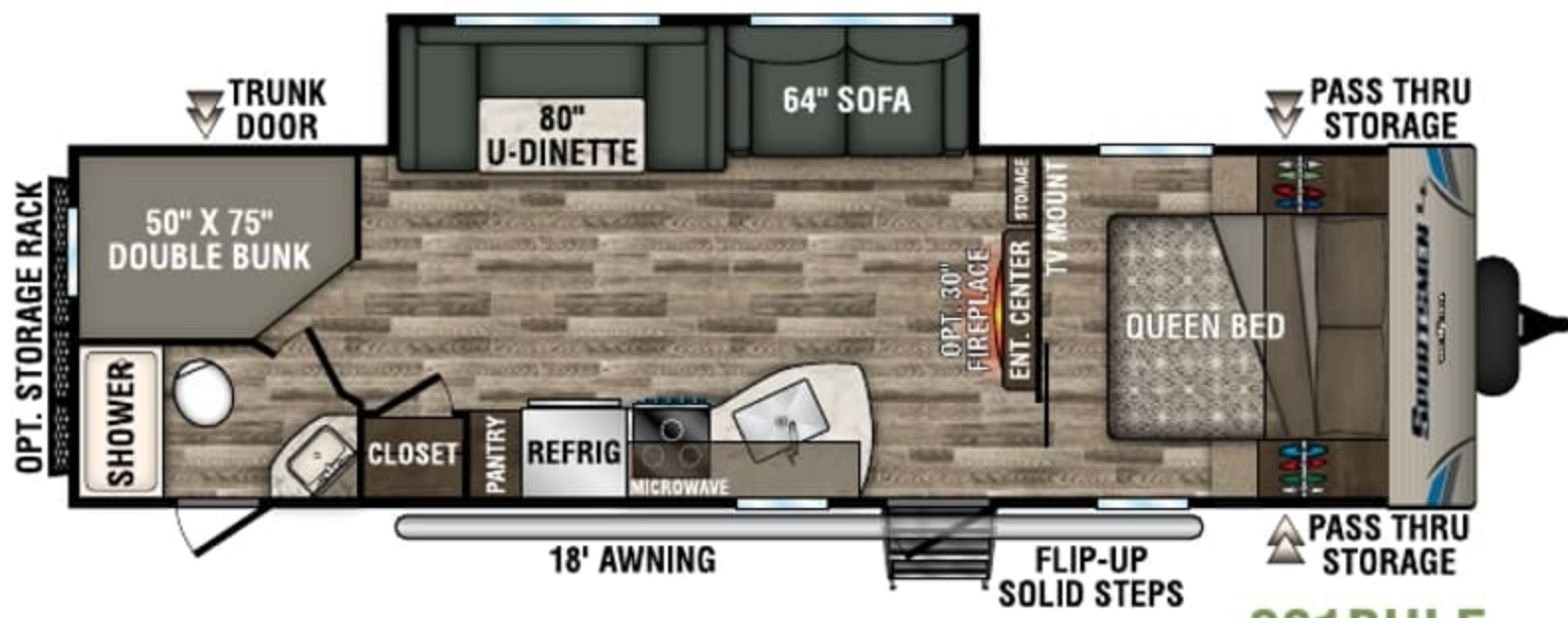


333BHKLE **NEW**



343BHKLE **NEW**





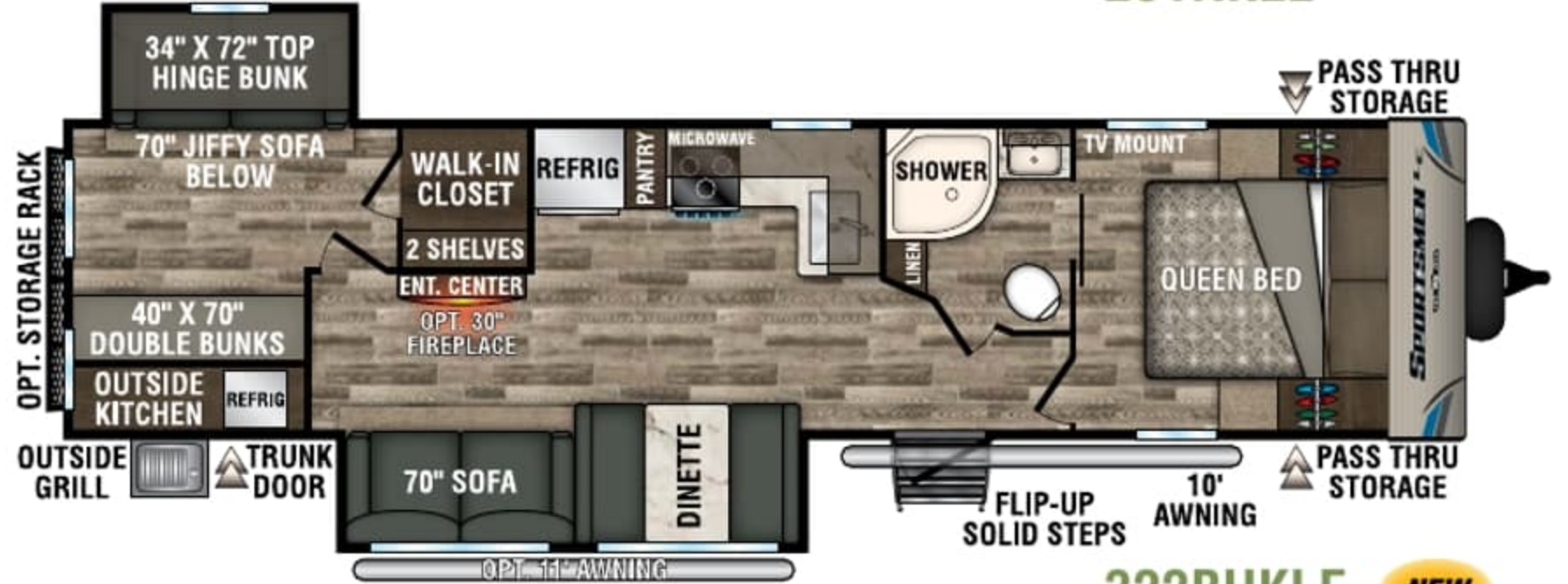
291BHLE



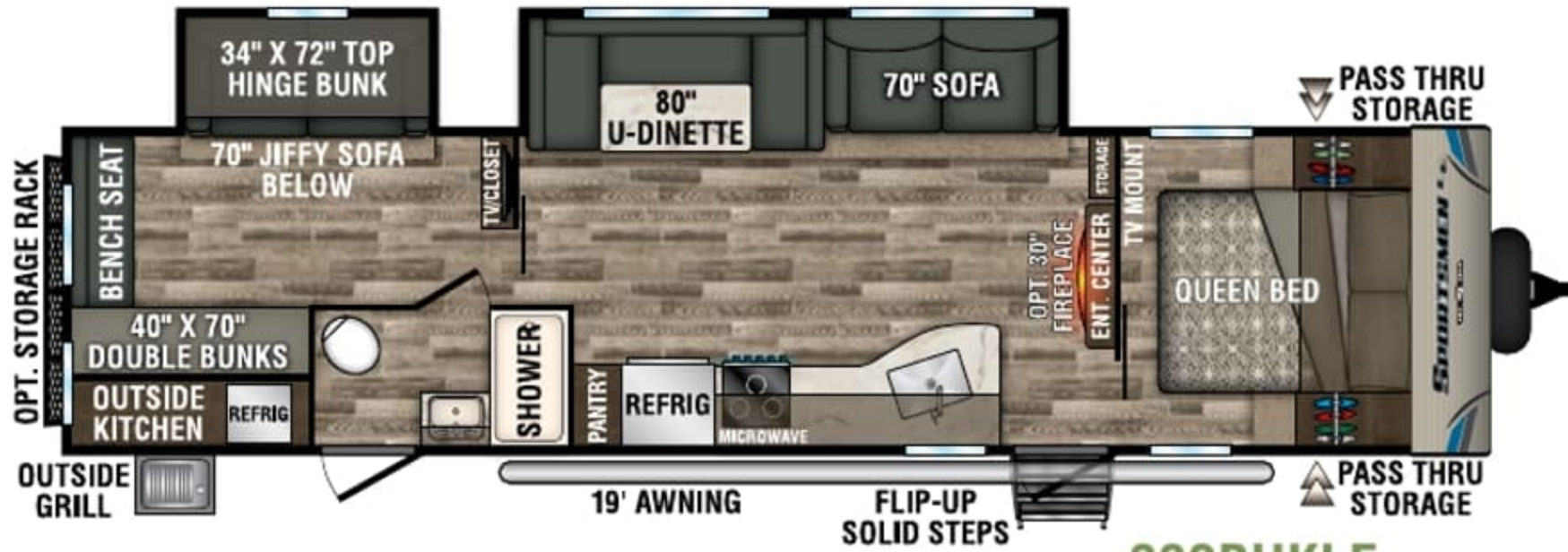
291RKLE



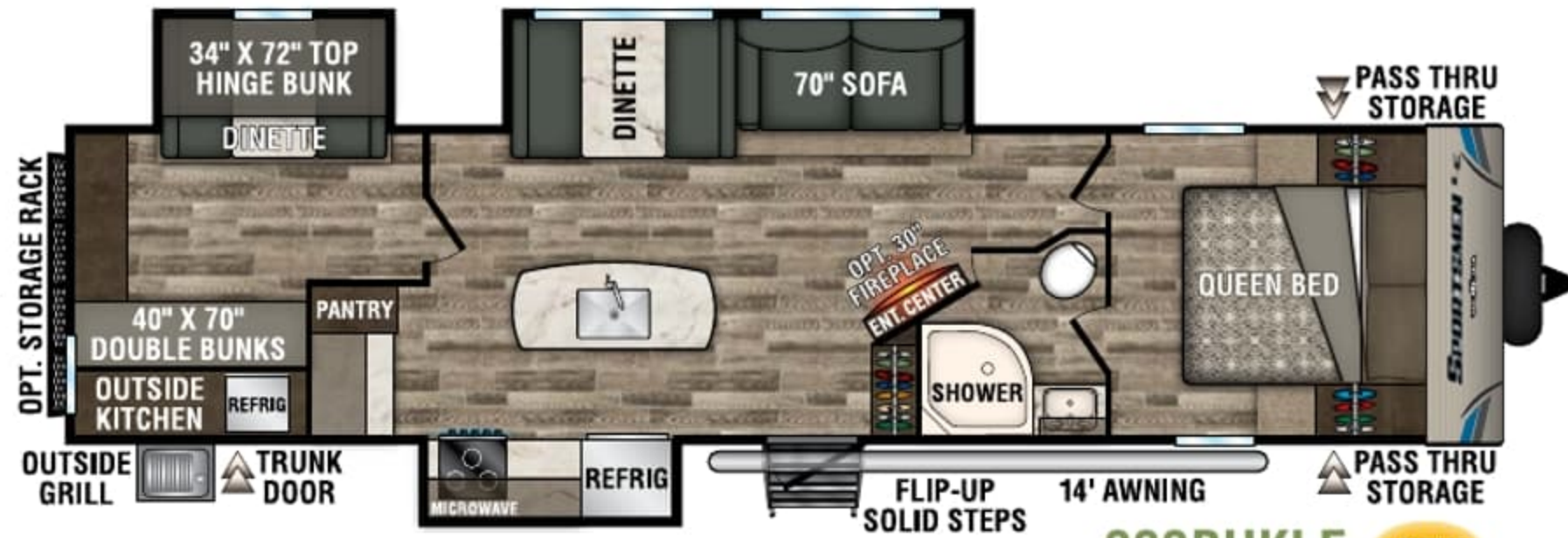
292RLLE



322BHKLE **NEW**



332BHKLE



333BHKLE **NEW**



343BHKLE **NEW**



**STANDARDS**

- KZ Exclusive Tough Shield Exterior Metal
- 1-Piece Seamless Roof w/SuperFlex® Roofing Material
- 3/8" Fully Walk-On Roof Decking
- Radius Truss Roof Rafters
- Awning w/Drip Rail & Spouts
- R-7 Insulation
- Radius Entry Door
- Extra-Large Radius Baggage Doors
- Tinted Windows
- Diamond Plate Rock Guard
- Rear Bumper w/Sewer Hose Storage
- (2) 20# LP Bottles
- 30 AMP Service
- Cable Hookup
- Digital TV Antenna w/Booster
- 13,500 BTU A/C
- Water Heater Bypass Kit
- 3-Burner Cooktop
- Range Hood w/12V Light & Exhaust Fan
- Microwave w/Turntable
- Large Overhead Cabinets
- Roller Ball Bearing Drawer Guides
- LED Interior Lighting
- Linoleum Throughout
- Mini Blinds
- Monitor Panel
- Power Vent in Bath
- Reversible Quilted Comforter
- Built-In Medicine Cabinet w/Mirror in Bath
- Shower Surround

**OPTIONS**

- 15,000 BTU A/C IPO 13,500 BTU A/C
- 50 AMP Service w/2nd A/C Prep
- 2nd A/C (13,500 BTU)
- 30" Fireplace (N/A 231BHK, 261BHK)
- 39" LED TV (N/A 261BHK)
- 32" LED TV (261BHK)
- 24" LED TV (231BHK)
- Bedroom LED TV w/Inside/Outside Bracket
- F/S Dinette Table & 4 chairs IPO Dinette
- Wireless Backup Camera System - Observation
- Roof Ladder

- Climate Package (heated, insulated & enclosed underbelly)
- Flip-Down 71" Storage Rack
- Murphy Bed w/Sofa (231BHK)
- 10 CU FT Refrigerator 12V IPO  
7 CU FT Gas/Electric Refrigerator
- Sink Cover
- Aluminum Wheels
- 11' Power Awning w/LED light strip (292RL/322BHK/343BHK)

**KZ ADVANTAGE PACKAGE (MANDATORY OPTION)****EXTERIOR**

- New Aerodynamic Front Profile
- Flip-Up Entry Step (main entry)
- Two-Toned Exterior Metal
- Friction-Hinged Entry Door
- Key-Alike Program for Entry & Baggage Doors
- Large Folding Grab Handle
- Power Tongue Jack
- Exterior Speakers
- Spare Tire & Carrier
- Nitrogen-Filled Tires

- (4) Stabilizer Jacks
- LP Bottle Cover
- Backup Camera Prep
- Solar Prep
- Outside Shower
- Outside Kitchen (select models)

**INTERIOR**

- Jackknife Sofa w/Center Console & Bolster Arms
- Drop-In Cooktop w/Glass Cover & Oven
- 12V Dual USB Port in LR
- Plywood Bed Base
- Upper Bunk Windows (select models)
- Seamless Countertops w/Deep Undermount Stainless Steel Kitchen Sink
- Foot-Flush Toilet
- (2) 6.5" Interior Speakers
- Multimedia Stereo w/DVD, Bluetooth & NFC Wireless Connectivity
- Shower Skylight
- Bright White LED Light Strip above Slideout Room (main LR only)
- Dinette Doors w/36" Pullout Storage Bins
- Wider Pocket/Passage Interior Doors
- Pleated Shades in Slideout (LR)

**KZ CONVENIENCE PACKAGE (MANDATORY OPTION)****EXTERIOR**

- Power Awning w/LED Light Strip
- Magnetic Catches for Baggage Doors
- LED Light in Storage Area
- Battery Disconnect Switch
- Omnidirectional HDTV Antenna
- Black Tank Flush
- LED Lights in Exterior Speakers

**INTERIOR**

- Residential Grade Linoleum
- 7 CU FT Gas/Electric Refrigerator w/ Temperature Controls
- Stainless Steel Residential Kitchen Faucet
- Interior Control Switches on Overhead End Cabinet
- Dark Accent Trim on Corners/Entry Doors
- Electric Outlet in Bunk Area

# EXTERIOR FEATURES

**WHEELS**

Nitrogen-filled tires and spare tire w/carrier are standard (aluminum wheels OPT)

**SOLAR CHARGE**

Wired for solar

**HITCH LIGHT**

Lighted power tongue jack

**EXTERIOR SPEAKERS**

Two exterior speakers with LED lighting



**STANDARDS**

- KZ Exclusive Tough Shield Exterior Metal
- 1-Piece Seamless Roof w/SuperFlex® Roofing Material
- 3/8" Fully Walk-On Roof Decking
- Radius Truss Roof Rafters
- Awning w/Drip Rail & Spouts
- R-7 Insulation
- Radius Entry Door
- Extra-Large Radius Baggage Doors
- Tinted Windows
- Diamond Plate Rock Guard
- Rear Bumper w/Sewer Hose Storage
- (2) 20# LP Bottles
- 30 AMP Service
- Cable Hookup
- Digital TV Antenna w/Booster
- 13,500 BTU A/C
- Water Heater Bypass Kit
- 3-Burner Cooktop
- Range Hood w/12V Light & Exhaust Fan
- Microwave w/Turntable
- Large Overhead Cabinets
- Roller Ball Bearing Drawer Guides
- LED Interior Lighting
- Linoleum Throughout
- Mini Blinds
- Monitor Panel
- Power Vent in Bath
- Reversible Quilted Comforter
- Built-In Medicine Cabinet w/Mirror in Bath
- Shower Surround

**OPTIONS**

- 15,000 BTU A/C IPO 13,500 BTU A/C
- 50 AMP Service w/2nd A/C Prep
- 2nd A/C (13,500 BTU)
- 30" Fireplace (N/A 231BHK, 261BHK)
- 39" LED TV (N/A 261BHK)
- 32" LED TV (261BHK)
- 24" LED TV (231BHK)
- Bedroom LED TV w/Inside/Outside Bracket
- F/S Dinette Table & 4 chairs IPO Dinette
- Wireless Backup Camera System - Observation
- Roof Ladder

- Climate Package (heated, insulated & enclosed underbelly)
- Flip-Down 71" Storage Rack
- Murphy Bed w/Sofa (231BHK)
- 10 CU FT Refrigerator 12V IPO  
7 CU FT Gas/Electric Refrigerator
- Sink Cover
- Aluminum Wheels
- 11' Power Awning w/LED light strip (292RL/322BHK/343BHK)

**KZ ADVANTAGE PACKAGE (MANDATORY OPTION)**

**EXTERIOR**

- New Aerodynamic Front Profile
- Flip-Up Entry Step (main entry)
- Two-Toned Exterior Metal
- Friction-Hinged Entry Door
- Key-Alike Program for Entry & Baggage Doors
- Large Folding Grab Handle
- Power Tongue Jack
- Exterior Speakers
- Spare Tire & Carrier
- Nitrogen-Filled Tires

- (4) Stabilizer Jacks
- LP Bottle Cover
- Backup Camera Prep
- Solar Prep
- Outside Shower
- Outside Kitchen (select models)

**INTERIOR**

- Jackknife Sofa w/Center Console & Bolster Arms
- Drop-In Cooktop w/Glass Cover & Oven
- 12V Dual USB Port in LR
- Plywood Bed Base
- Upper Bunk Windows (select models)
- Seamless Countertops w/Deep Undermount Stainless Steel Kitchen Sink
- Foot-Flush Toilet
- (2) 6.5" Interior Speakers
- Multimedia Stereo w/DVD, Bluetooth & NFC Wireless Connectivity
- Shower Skylight
- Bright White LED Light Strip above Slideout Room (main LR only)
- Dinette Doors w/36" Pullout Storage Bins
- Wider Pocket/Passage Interior Doors
- Pleated Shades in Slideout (LR)

**KZ CONVENIENCE PACKAGE (MANDATORY OPTION)**

**EXTERIOR**

- Power Awning w/LED Light Strip
- Magnetic Catches for Baggage Doors
- LED Light in Storage Area
- Battery Disconnect Switch
- Omnidirectional HDTV Antenna
- Black Tank Flush
- LED Lights in Exterior Speakers

**INTERIOR**

- Residential Grade Linoleum
- 7 CU FT Gas/Electric Refrigerator w/Temperature Controls
- Stainless Steel Residential Kitchen Faucet
- Interior Control Switches on Overhead End Cabinet
- Dark Accent Trim on Corners/Entry Doors
- Electric Outlet in Bunk Area

**EXTERIOR FEATURES**



**WHEELS**

Nitrogen-filled tires and spare tire w/carrier are standard (aluminum wheels OPT)



**SOLAR CHARGE**

Wired for solar



**HITCH LIGHT**

Lighted power tongue jack



**EXTERIOR SPEAKERS**

Two exterior speakers with LED lighting



# SPECIFICATIONS

Sportsmen LE Travel Trailers	231BHKLE	241RKLE	241RLLE	261BHKLE	261RLLE	281BHKLE	291BHLE	291RKLE	292RLLE	322BHKLE	332BHKLE	333BHKLE	343BHKLE
UVW (Unloaded Vehicle Weight)*	4,628	5,440	5,230	5,550	5,410	6,280	6,020	6,330	6,610	7,340	7,350	8,140	8,160
Dry Hitch Weight*	579	560	620	600	670	720	670	635	810	860	860	850	950
Dry Axle Weight*	4,049	4,880	4,160	4,950	4,740	5,560	5,350	5,695	5,800	6,480	6,490	7,290	7,210
NCC (Net Carrying Capacity)	1,372	1,560	1,770	1,450	1,590	1,720	1,980	1,670	1,390	1,460	1,450	1,855	1,835
GVWR	6,000	7,000	7,000	7,000	7,000	8,000	8,000	8,000	8,000	8,800	8,800	9,995	9,995
Interior Height	78"	78"	78"	78"	78"	78"	78"	78"	78"	78"	78"	78"	78"
Exterior Height w/ A/C	10' 4"	10' 8"	10' 8"	10' 8"	10' 7"	10' 8"	10' 8"	10' 8"	10' 8"	10' 8"	10' 8"	10' 8"	10' 8"
Exterior Width	96"	96"	96"	96"	96"	96"	96"	96"	96"	96"	96"	96"	96"
Exterior Length	26' 9"	28' 6"	28' 11"	30' 2"	30' 8"	32' 8"	33' 2"	33' 2"	33' 9"	36' 9"	36' 10"	37' 8"	37' 11"
Refrigerator (cu. feet)	7	7	7	7	7	7	7	7	7	7	7	7	7
Water Heater Cap. (gal. G/E w/DSI)	6	6	6	6	6	6	6	6	6	6	6	6	6
Fresh Water Cap. (gal.)	38	38	38	38	38	38	38	38	38	38	38	38	38
Waste Water Cap. (gal.)	32	32	32	32	32	32	32	32	32	32	32	32	32
Gray Water Cap. (gal.)	32	32	32	32	32	32	32	64	32	32	32	32	32
LP Gas Cap. (lbs.)	40	40	40	40	40	40	40	40	40	40	40	40	40
Furnace BTUs (1,000s)	20	30	30	30	30	30	30	30	30	30	30	30	30
Tire Size	14"	14"	14"	14"	14"	14"	15"	15"	15"	15"	15"	15"	15"
Awning	18'	19'	17'	19'	15'	18'	18'	18'	10' w/11' opt.	10' w/11' opt.	19'	14'	10' w/11' opt.

\*This weight reflects the rolling average unit weight for each model. Your trailer weight will vary according to optional equipment.



### STANDARD FLIP-UP ENTRY STEP

and friction-hinge entry door with folding grab handle. Step deploys squarely to provide solid footing, and flips up in one easy motion.



### ILLUMINATED POWER AWNING

Standard power awning with LED light strip. Optional second awning on select models.



### OUTSIDE KITCHENS

feature an outside grill cooktop, refrigerator and storage space (STD on select models) (231BHKLE shown)



# SPECIFICATIONS

Sportsmen LE Travel Trailers	231BHKLE	241RKLE	241RLLE	261BHKLE	261RLLE	281BHKLE	291BHLE	291RKLE	292RLLE	322BHKLE	332BHKLE	333BHKLE	343BHKLE
UVW (Unloaded Vehicle Weight)*	4,628	5,440	5,230	5,550	5,410	6,280	6,020	6,330	6,610	7,340	7,350	8,140	8,160
Dry Hitch Weight*	579	560	620	600	670	720	670	635	810	860	860	850	950
Dry Axle Weight*	4,049	4,880	4,160	4,950	4,740	5,560	5,350	5,695	5,800	6,480	6,490	7,290	7,210
NCC (Net Carrying Capacity)	1,372	1,560	1,770	1,450	1,590	1,720	1,980	1,670	1,390	1,460	1,450	1,855	1,835
GVWR	6,000	7,000	7,000	7,000	7,000	8,000	8,000	8,000	8,000	8,800	8,800	9,995	9,995
Interior Height	78"	78"	78"	78"	78"	78"	78"	78"	78"	78"	78"	78"	78"
Exterior Height w/ A/C	10' 4"	10' 8"	10' 8"	10' 8"	10' 7"	10' 8"	10' 8"	10' 8"	10' 8"	10' 8"	10' 8"	10' 8"	10' 8"
Exterior Width	96"	96"	96"	96"	96"	96"	96"	96"	96"	96"	96"	96"	96"
Exterior Length	26' 9"	28' 6"	28' 11"	30' 2"	30' 8"	32' 8"	33' 2"	33' 2"	33' 9"	36' 9"	36' 10"	37' 8"	37' 11"
Refrigerator (cu. feet)	7	7	7	7	7	7	7	7	7	7	7	7	7
Water Heater Cap. (gal. G/E w/DSI)	6	6	6	6	6	6	6	6	6	6	6	6	6
Fresh Water Cap. (gal.)	38	38	38	38	38	38	38	38	38	38	38	38	38
Waste Water Cap. (gal.)	32	32	32	32	32	32	32	32	32	32	32	32	32
Gray Water Cap. (gal.)	32	32	32	32	32	32	32	64	32	32	32	32	32
LP Gas Cap. (lbs.)	40	40	40	40	40	40	40	40	40	40	40	40	40
Furnace BTUs (1,000s)	20	30	30	30	30	30	30	30	30	30	30	30	30
Tire Size	14"	14"	14"	14"	14"	14"	15"	15"	15"	15"	15"	15"	15"
Awning	18'	19'	17'	19'	15'	18'	18'	18'	10' w/11' opt.	10' w/11' opt.	19'	14'	10' w/11' opt.

\*This weight reflects the rolling average unit weight for each model. Your trailer weight will vary according to optional equipment.



## STANDARD FLIP-UP ENTRY STEP

and friction-hinge entry door with folding grab handle. Step deploys squarely to provide solid footing, and flips up in one easy motion.



## ILLUMINATED POWER AWNING

Standard power awning with LED light strip. Optional second awning on select models.



## OUTSIDE KITCHENS

feature an outside grill cooktop, refrigerator and storage space (STD on select models) (231BHKLE shown)



## READY FOR ACTION!

**SPORTSMEN LE TOY HAULERS** come with the same great features as our LE travel trailers, but with space for your toys. They're offered in several awesome floorplans, sure to fit every lifestyle.



291THLE : Walnut décor

### VERSATILE LIVING

Spacious garage converts to living space, with two 70-inch rollover sofas and freestanding table, windows with privacy covers, secure overhead storage and TV mount. (291THLE shown)





## READY FOR ACTION!

**SPORTSMEN LE TOY HAULERS** come with the same great features as our LE travel trailers, but with space for your toys. They're offered in several awesome floorplans, sure to fit every lifestyle.



291THLE : Walnut décor

### VERSATILE LIVING

Spacious garage converts to living space, with two 70-inch rollover sofas and freestanding table, windows with privacy covers, secure overhead storage and TV mount. (291THLE shown)







291THLE : Walnut décor

### ADVENTURE IN STYLE

Entertainment center with accent wall & frosted cabinets, and the same great LE kitchen with seamless counters, stainless sink and high-rise faucet, drop-in cooktop with glass cover, oven & microwave. (291THLE shown)

### LUXURY BATH

Vanity with built-in mirrored medicine cabinet, power vent, shower surround and foot-flush toilet. (291THLE shown)

### SENSIBLE BATH

Radius shower, linen closet, vanity storage and convenient access to monitor panel. (250THLE shown)



### CONVERTS WITH EASE

Choose living area, sleep options or garage space. The 70-inch rollover sofa provides comfort, then folds flat against the wall, with residential-grade linoleum and secure floor tie-downs







291THLE : Walnut décor

### ADVENTURE IN STYLE

Entertainment center with accent wall & frosted cabinets, and the same great LE kitchen with seamless counters, stainless sink and high-rise faucet, drop-in cooktop with glass cover, oven & microwave. (291THLE shown)

### LUXURY BATH

Vanity with built-in mirrored medicine cabinet, power vent, shower surround and foot-flush toilet. (291THLE shown)

### SENSIBLE BATH

Radius shower, linen closet, vanity storage and convenient access to monitor panel. (250THLE shown)



### CONVERTS WITH EASE

Choose living area, sleep options or garage space. The 70-inch rollover sofa provides comfort, then folds flat against the wall, with residential-grade linoleum and secure floor tie-downs





**STANDARDS**

- KZ Exclusive Tough Shield Exterior Metal
- 1-Piece Seamless Roof w/SuperFlex® Roofing Material
- 3/8" Fully Walk-On Roof Decking
- Radius Truss Roof Rafters
- Awning w/Drip Rail & Spouts
- R-7 Insulation
- Radius Entry Door
- Extra-Large Radius Baggage Doors
- Tinted Windows
- Diamond Plate Rock Guard
- Rear Bumper w/Sewer Hose Storage
- (2) 20# LP Bottles
- 30 AMP Service
- Cable Hookup
- Digital TV Antenna w/Booster
- 13,500 BTU A/C
- Water Heater Bypass Kit
- 3-Burner Cooktop
- Range Hood w/12V Light & Exhaust Fan
- Microwave w/Turntable
- Large Overhead Cabinets
- Roller Ball Bearing Drawer Guides
- LED Interior Lighting
- Linoleum Throughout

- Mini Blinds
- Monitor Panel
- Power Vent in Bath
- Reversible Quilted Comforter
- Built-In Medicine Cabinet w/Mirror in Bath
- Shower Surround

**OPTIONS**

- 15,000 BTU A/C IPO 13,500 BTU A/C
- 50 AMP Service w/2nd A/C Prep
- 2nd A/C (13,500 BTU)
- 30" Fireplace (N/A 190TH, 250TH)
- 39" LED TV
- 24" LED TV (190TH)
- Bedroom LED TV w/Inside/Outside Bracket
- F/S Dinette Table & 4 chairs IPO Dinette
- Wireless Backup Camera System - Observation
- Roof Ladder
- Climate Package (heated, insulated & enclosed underbelly)
- 10 CU FT Refrigerator 12V IPO 7 CU FT Gas/Electric Refrigerator (N/A 190TH)
- Sink Cover

- Aluminum Wheels
- Retractable Screen Wall
- Party Patio Package (railing)

**KZ ADVANTAGE PACKAGE (MANDATORY OPTION)**

**EXTERIOR**

- New Aerodynamic Front Profile
- Flip-Up Entry Step (main entry)
- Two-Toned Exterior Metal
- Friction-Hinged Entry Door
- Key-Alike Program for Entry & Baggage Doors
- Large Folding Grab Handle
- Power Tongue Jack
- Exterior Speakers
- Spare Tire & Carrier
- Nitrogen-Filled Tires
- (4) Stabilizer Jacks
- LP Bottle Cover
- Backup Camera Prep
- Solar Prep
- Outside Shower
- Outside Kitchen (select models)

**INTERIOR**

- Jackknife Sofa w/Center Console & Bolster Arms
- Drop-In Cooktop w/Glass Cover & Oven
- 12V Dual USB Port in LR
- Plywood Bed Base
- Upper Bunk Windows (select models)
- Seamless Countertops w/Deep Undermount Stainless Steel Kitchen Sink
- Foot-Flush Toilet
- (2) 6.5" Interior Speakers
- Multimedia Stereo w/DVD, Bluetooth & NFC Wireless Connectivity
- Shower Skylight
- Bright White LED Light Strip above Slideout Room (main LR only)
- Dinette Doors w/36" Pullout Storage Bins
- Wider Pocket/Passage Interior Doors
- Pleated Shades in Slideout (LR)

**KZ CONVENIENCE PACKAGE (MANDATORY OPTION)**

**EXTERIOR**

- Power Awning w/LED Light Strip
- Magnetic Catches for Baggage Doors
- LED Light in Storage Area
- Battery Disconnect Switch
- Omnidirectional HDTV Antenna
- Black Tank Flush
- LED Lights in Exterior Speakers

**INTERIOR**

- Residential Grade Linoleum
- 7 CU FT Gas/Electric Refrigerator w/ Temperature Controls
- Stainless Steel Residential Kitchen Faucet
- Interior Control Switches on Overhead End Cabinet
- Dark Accent Trim on Corners/Entry Doors
- Electric Outlet in Bunk Area

Sportsmen LE Travel Trailer Toy Haulers	190THLE	250THLE	270THLE	291THLE
UVW (Unloaded Vehicle Weight)*	4,075	5,220	5,470	6,100
Dry Hitch Weight*	515	970	955	1,260
Dry Axle Weight*	3,560	4,250	4,515	4,840
NCC (Net Carrying Capacity)	2,925	3,580	3,330	2,800
GVWR	7,000	8,800	8,800	8,900
Interior Height	78"	78"	78"	78"
Exterior Height w/ A/C	10' 8"	10' 8"	10' 8"	10' 9"
Exterior Width	96"	96"	96"	96"
Exterior Length	21' 7"	28' 4"	30' 1"	33' 8"
Refrigerator (cu. feet)	7	7	7	7
Water Heater Cap. (gal. G/E w/DSI)	6	6	6	6
Fresh Water Cap. (gal.)	38	38	38	38
Waste Water Cap. (gal.)	32	32	32	32
Gray Water Cap. (gal.)	32	32	32	32
LP Gas Cap. (lbs.)	40	40	40	40
Furnace BTUs (1,000s)	20	20	25	30
Tire Size	14"	15"	15"	15"
Awning	13'	18'	20'	20'

\*This weight reflects the rolling average unit weight for each model. Your trailer weight will vary according to optional equipment.





**STANDARDS**

- KZ Exclusive Tough Shield Exterior Metal
- 1-Piece Seamless Roof w/SuperFlex® Roofing Material
- 3/8" Fully Walk-On Roof Decking
- Radius Truss Roof Rafters
- Awning w/Drip Rail & Spouts
- R-7 Insulation
- Radius Entry Door
- Extra-Large Radius Baggage Doors
- Tinted Windows
- Diamond Plate Rock Guard
- Rear Bumper w/Sewer Hose Storage
- (2) 20# LP Bottles
- 30 AMP Service
- Cable Hookup
- Digital TV Antenna w/Booster
- 13,500 BTU A/C
- Water Heater Bypass Kit
- 3-Burner Cooktop
- Range Hood w/12V Light & Exhaust Fan
- Microwave w/Turntable
- Large Overhead Cabinets
- Roller Ball Bearing Drawer Guides
- LED Interior Lighting
- Linoleum Throughout

- Mini Blinds
- Monitor Panel
- Power Vent in Bath
- Reversible Quilted Comforter
- Built-In Medicine Cabinet w/Mirror in Bath
- Shower Surround

**OPTIONS**

- 15,000 BTU A/C IPO 13,500 BTU A/C
- 50 AMP Service w/2nd A/C Prep
- 2nd A/C (13,500 BTU)
- 30" Fireplace (N/A 190TH, 250TH)
- 39" LED TV
- 24" LED TV (190TH)
- Bedroom LED TV w/Inside/Outside Bracket
- F/S Dinette Table & 4 chairs IPO Dinette
- Wireless Backup Camera System - Observation
- Roof Ladder
- Climate Package (heated, insulated & enclosed underbelly)
- 10 CU FT Refrigerator 12V IPO 7 CU FT Gas/Electric Refrigerator (N/A 190TH)
- Sink Cover

- Aluminum Wheels
- Retractable Screen Wall
- Party Patio Package (railing)

**KZ ADVANTAGE PACKAGE (MANDATORY OPTION)**

**EXTERIOR**

- New Aerodynamic Front Profile
- Flip-Up Entry Step (main entry)
- Two-Toned Exterior Metal
- Friction-Hinged Entry Door
- Key-Alike Program for Entry & Baggage Doors
- Large Folding Grab Handle
- Power Tongue Jack
- Exterior Speakers
- Spare Tire & Carrier
- Nitrogen-Filled Tires
- (4) Stabilizer Jacks
- LP Bottle Cover
- Backup Camera Prep
- Solar Prep
- Outside Shower
- Outside Kitchen (select models)

**INTERIOR**

- Jackknife Sofa w/Center Console & Bolster Arms
- Drop-In Cooktop w/Glass Cover & Oven
- 12V Dual USB Port in LR
- Plywood Bed Base
- Upper Bunk Windows (select models)
- Seamless Countertops w/Deep Undermount Stainless Steel Kitchen Sink
- Foot-Flush Toilet
- (2) 6.5" Interior Speakers
- Multimedia Stereo w/DVD, Bluetooth & NFC Wireless Connectivity
- Shower Skylight
- Bright White LED Light Strip above Slideout Room (main LR only)
- Dinette Doors w/36" Pullout Storage Bins
- Wider Pocket/Passage Interior Doors
- Pleated Shades in Slideout (LR)

**KZ CONVENIENCE PACKAGE (MANDATORY OPTION)**

**EXTERIOR**

- Power Awning w/LED Light Strip
- Magnetic Catches for Baggage Doors
- LED Light in Storage Area
- Battery Disconnect Switch
- Omnidirectional HDTV Antenna
- Black Tank Flush
- LED Lights in Exterior Speakers

**INTERIOR**

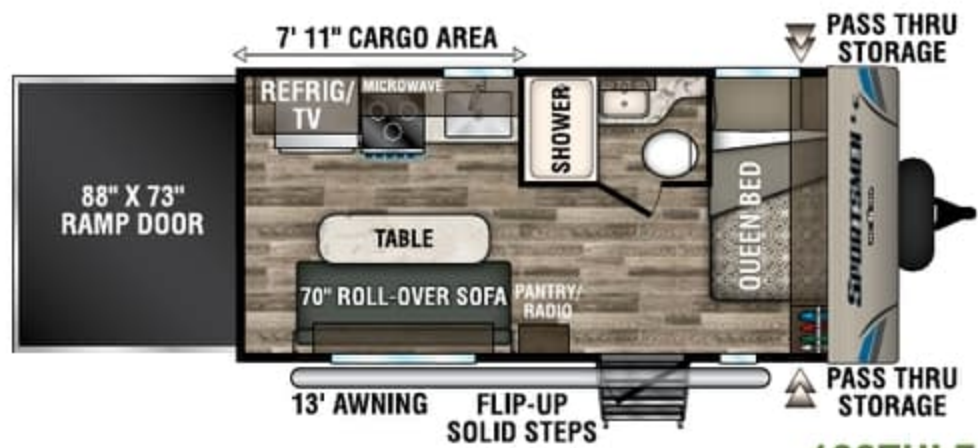
- Residential Grade Linoleum
- 7 CU FT Gas/Electric Refrigerator w/ Temperature Controls
- Stainless Steel Residential Kitchen Faucet
- Interior Control Switches on Overhead End Cabinet
- Dark Accent Trim on Corners/Entry Doors
- Electric Outlet in Bunk Area

Sportsmen LE Travel Trailer Toy Haulers	190THLE	250THLE	270THLE	291THLE
UVW (Unloaded Vehicle Weight)*	4,075	5,220	5,470	6,100
Dry Hitch Weight*	515	970	955	1,260
Dry Axle Weight*	3,560	4,250	4,515	4,840
NCC (Net Carrying Capacity)	2,925	3,580	3,330	2,800
GVWR	7,000	8,800	8,800	8,900
Interior Height	78"	78"	78"	78"
Exterior Height w/ A/C	10' 8"	10' 8"	10' 8"	10' 9"
Exterior Width	96"	96"	96"	96"
Exterior Length	21' 7"	28' 4"	30' 1"	33' 8"
Refrigerator (cu. feet)	7	7	7	7
Water Heater Cap. (gal. G/E w/DSI)	6	6	6	6
Fresh Water Cap. (gal.)	38	38	38	38
Waste Water Cap. (gal.)	32	32	32	32
Gray Water Cap. (gal.)	32	32	32	32
LP Gas Cap. (lbs.)	40	40	40	40
Furnace BTUs (1,000s)	20	20	25	30
Tire Size	14"	15"	15"	15"
Awning	13'	18'	20'	20'

\*This weight reflects the rolling average unit weight for each model. Your trailer weight will vary according to optional equipment.







**190THLE**



**250THLE** **NEW**



**270THLE**

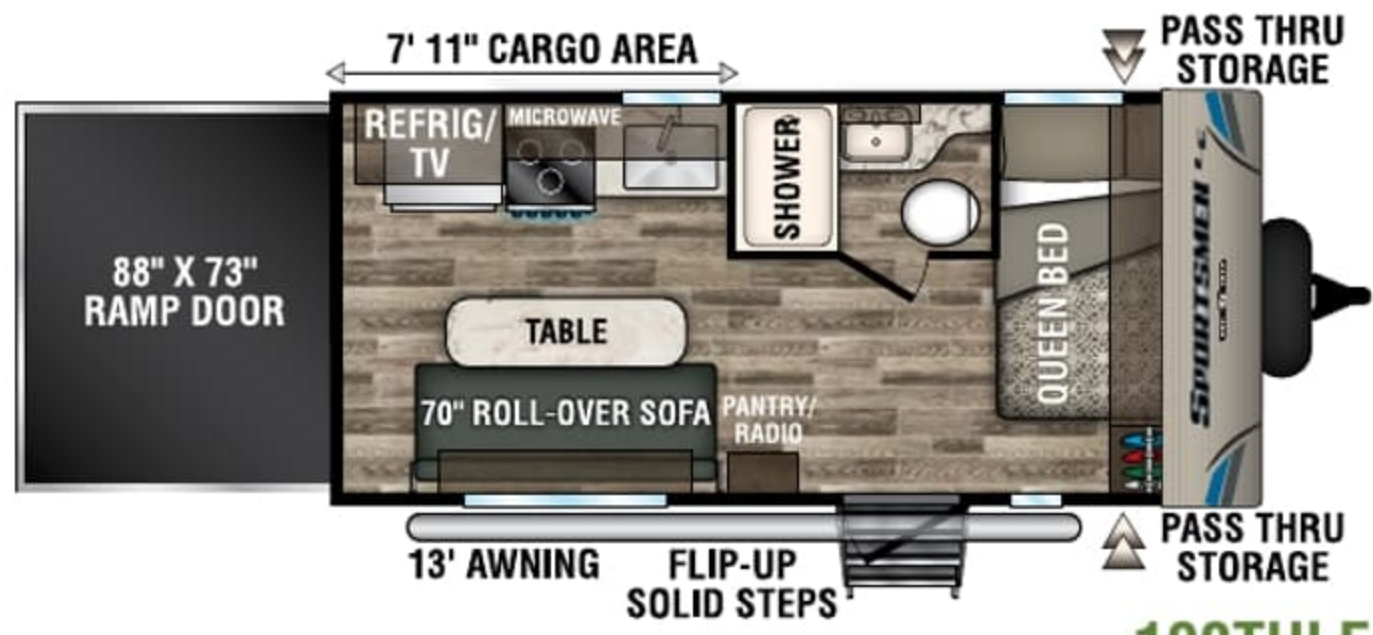


**291THLE** **NEW**

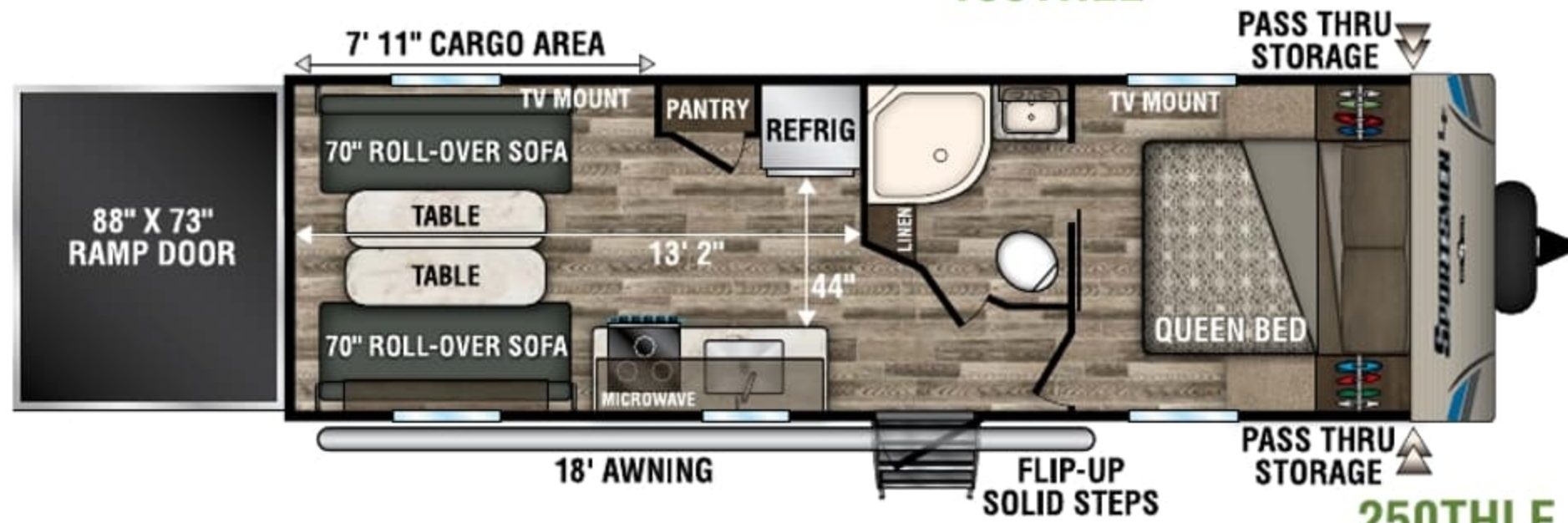
**RETRACTABLE SCREEN WALL** is optional, and pulls down like a garage door. And, host gatherings with the optional party patio package. (291THLE shown)



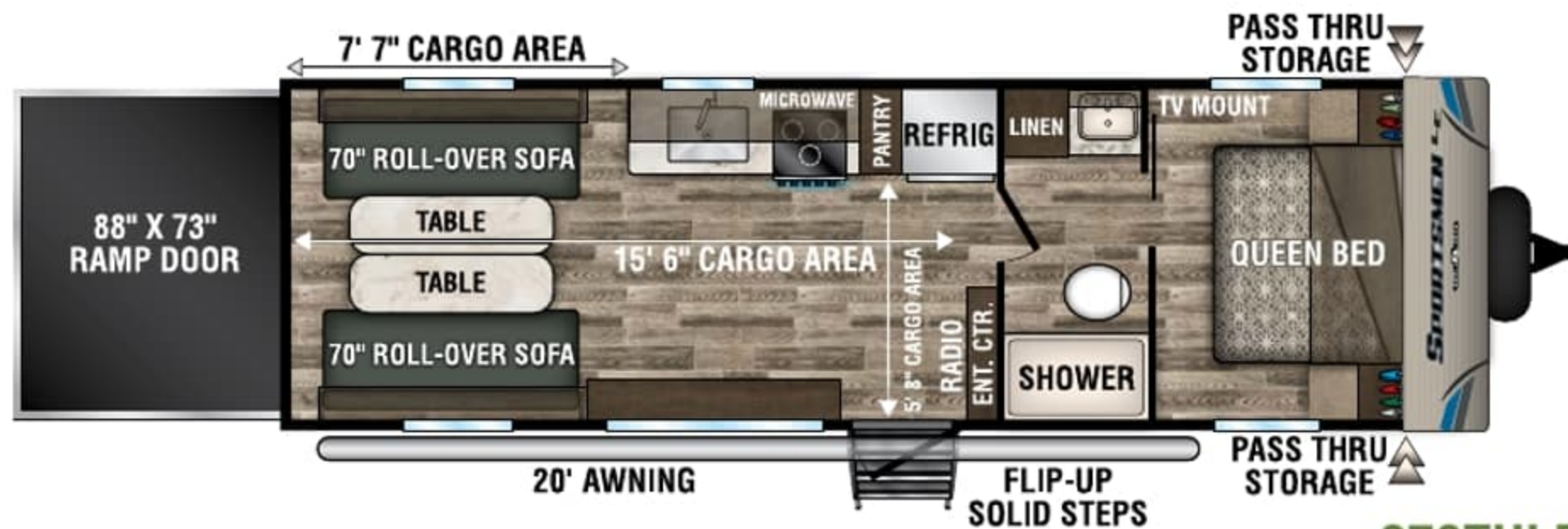




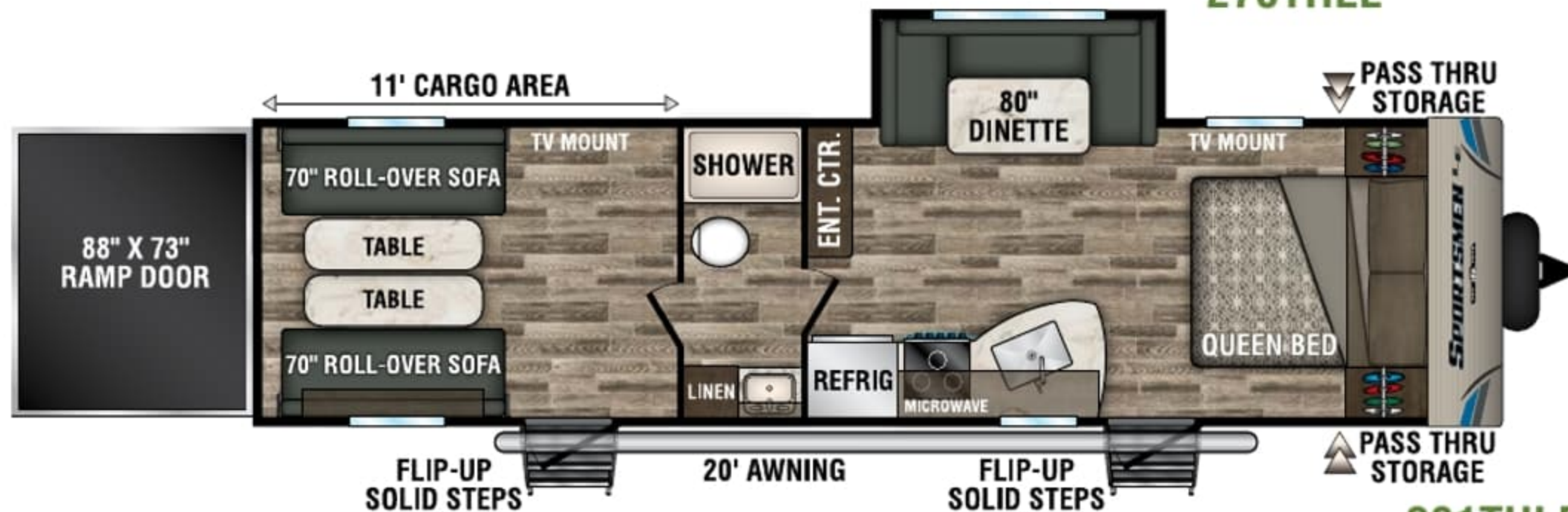
**190THLE**



**250THLE** **NEW**



**270THLE**



**291THLE** **NEW**

**RETRACTABLE SCREEN WALL**

is optional, and pulls down like a garage door. And, host gatherings with the optional party patio package. (291THLE shown)





# DOWNLOAD YOUR FREE

KZ RV APP TODAY!

Owning and operating an RV has never been easier. Everything you need is now in the palm of your hand.



Track RV Maintenance



Keep RV Service Close



Set Custom Notifications



Reference Checklists for RV Trips



DOWNLOAD NOW!



VISIT [KZ-APP.COM](http://KZ-APP.COM) TO LEARN MORE.

## KZ Recreational Vehicles... *A History in Progress*

Sam King and Daryl Zook built a truck camper in 1972, with founding principles of quality, fairness, courtesy and integrity. Nearly 50 years later, our 625 employees build your recreational vehicles, on our 100+ acre campus in Shipshewana, IN.

When you communicate with KZ, you'll always be speaking with someone who takes you seriously and treats you with respect. Thank you for considering KZ, and welcome to our world-wide family of satisfied customers!



Dealer:



985 N 900 W • Shipshewana, IN 46566  
E-mail [kz@kz-rv.com](mailto:kz@kz-rv.com) • [www.kz-rv.com](http://www.kz-rv.com)

**RVIA**

Due to continual research and advances, manufacturer reserves the right to change specifications, design, price and equipment without notice, and assumes no responsibility for any error in this literature. Some items shown are not included as standard or optional equipment. ©2019KZ | 06/12/19 | 15M



# DOWNLOAD YOUR FREE

KZ RV APP TODAY!

Owning and operating an RV has never been easier. Everything you need is now in the palm of your hand.



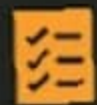
Track RV Maintenance



Keep RV Service Close



Set Custom Notifications



Reference Checklists for RV Trips



DOWNLOAD NOW!



VISIT [KZ-APP.COM](http://KZ-APP.COM) TO LEARN MORE.

## KZ Recreational Vehicles... *A History in Progress*

Sam King and Daryl Zook built a truck camper in 1972, with founding principles of quality, fairness, courtesy and integrity. Nearly 50 years later, our 625 employees build your recreational vehicles, on our 100+ acre campus in Shipshewana, IN.

When you communicate with KZ, you'll always be speaking with someone who takes you seriously and treats you with respect. Thank you for considering KZ, and welcome to our world-wide family of satisfied customers!



Dealer:



985 N 900 W • Shipshewana, IN 46565  
E-mail [kz@kz-rv.com](mailto:kz@kz-rv.com) • [www.kz-rv.com](http://www.kz-rv.com)

**RVIA**

*Due to continual research and advances, manufacturer reserves the right to change specifications, design, price and equipment without notice, and assumes no responsibility for any error in this literature. Some items shown are not included as standard or optional equipment. ©2019KZ | 06/12/19 | 15M*