

CLASS A DIESEL | DISCOVERY

fleetwoodrv.com

2020



 **FLEETWOOD RV**
DISCOVERY

2 | INTRO

4 | FREEDOM BRIDGE

6 | INTERIOR GALLERY

12 | FLOORPLANS

14 | EXTERIOR GRAPHICS

15 | DECOR

16 | STANDARDS AND OPTIONS

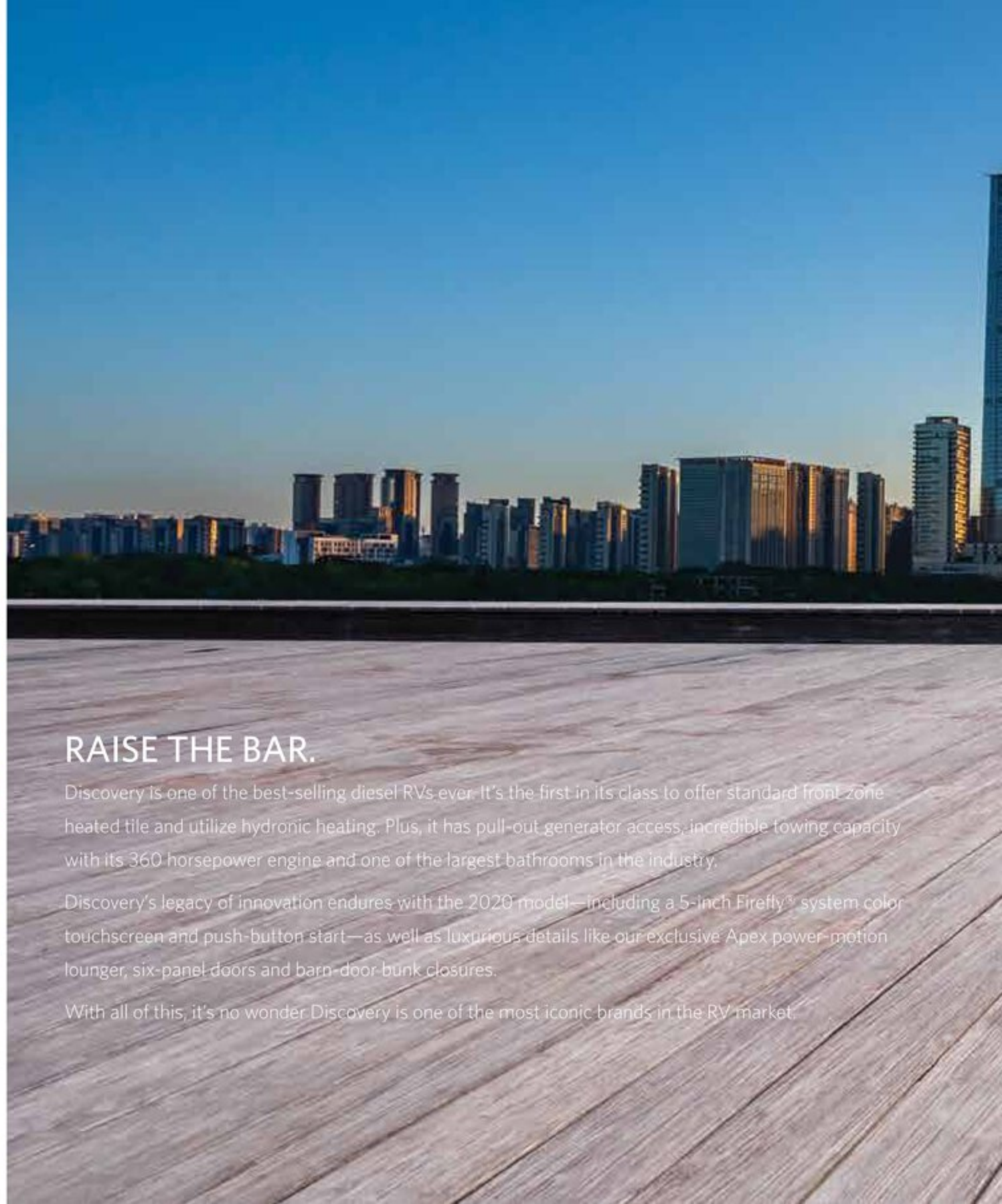
18 | OUTSTANDING STANDARDS AND OPTIONS

19 | SPECIFICATION CHARTS

 **FLEETWOOD RV**



2 | DISCOVERY — Model Year 2020



RAISE THE BAR.

Discovery is one of the best-selling diesel RVs ever. It's the first in its class to offer standard front zone heated tile and utilize hydronic heating. Plus, it has pull-out generator access, incredible towing capacity with its 360-horsepower engine and one of the largest bathrooms in the industry.

Discovery's legacy of innovation endures with the 2020 model—including a 5-inch Firefly[®] system color touchscreen and push-button start—as well as luxurious details like our exclusive Apex power-motion lounger, six-panel doors and barn-door bunk closures.

With all of this, it's no wonder Discovery is one of the most iconic brands in the RV market.

DISCOVERY 38W
VIPER GRAPHICS





Fleetwood RV and Freightliner Custom Chassis have teamed up to bring you the ultimate in luxury, power and performance. Introducing the newly re-engineered Freedom Bridge foundation.

Freedom Bridge foundation combines the unrivaled strength and storage capacity of Fleetwood RV's exclusive modular design with the high-performance innovation of a Freightliner chassis—all backed by the nation's largest service support network. The new Freedom Bridge brings performance and peace of mind together, perfectly.

Freedom Bridge XCM is the foundation for Discovery LXE models.



DriveTech rolls together FCCC's latest innovations—like the OptiView all-digital LCD dash display and FCCC's all-new ergonomic steering wheel and column-mounted controls— into one comfortable, easy-to-use driver console.



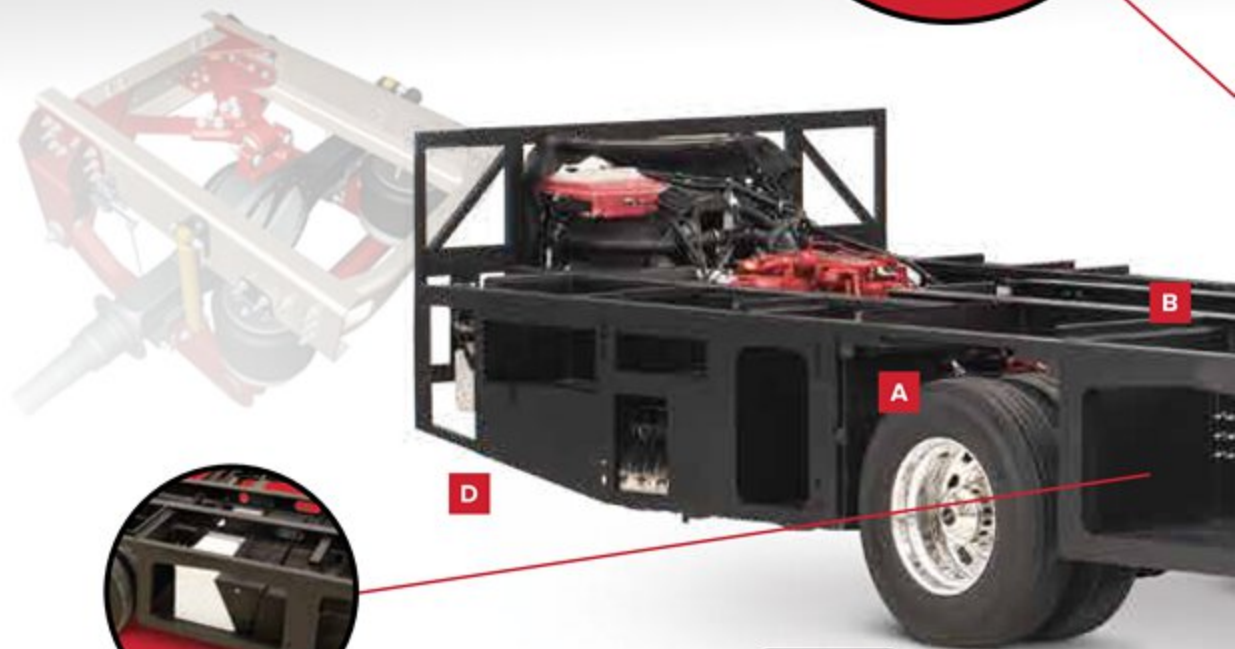
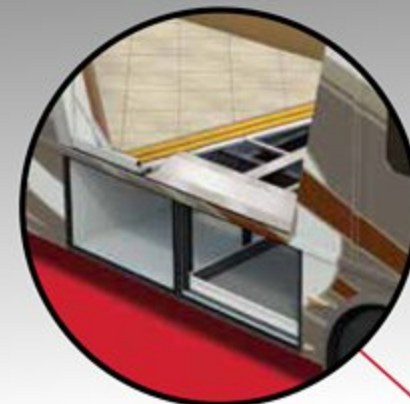
INTRODUCING DRIVETECH—the most advanced display and control system in the RV industry. DriveTech is the first RV driving system to prioritize safety by putting every command in one easy-to-reach location. The all-new ergonomic steering wheel and column-mounted controls are paired with OptiView's all-digital gauge display to create a more automotive-like feel and set the industry standard for luxury RV driving. And it's only from Freightliner Custom Chassis.

PRIORITIZING DRIVER SAFETY
A recent study reported that 80% of collisions and 65% of near collisions involved some form of driver distraction, often from using electronic devices while driving. DriveTech prioritizes driver safety by streamlining and simplifying controls to help drivers focus their full attention on maneuvering and piloting the coach.

CONNECTING WITH RV DRIVER EXPECTATIONS
The world is changing. By 2020, more than 90% of cars sold will be connected equipped with Internet access and a wireless network to share data with devices both inside and outside the vehicle. DriveTech updates the RV driver's station to align with that of the automotive industry, delivering the luxury experience modern drivers expect.



Rated up to 24,000 lbs., V-Ride allows for more luxury amenities, additional cargo capacity and superior roll stability.



Wedge Tank Design: Wedge-shaped holding tanks ensure thorough drainage of black and grey water.



RV OWNERCARE

Limited one-year/15,000-mile coach warranty and three-year/45,000-mile structural warranty, whichever occurs first, and it is fully transferable for the first 12 months. RV OWNERCARE is one of the RV industry's most comprehensive programs and includes systems, appliances, components and construction, with no deductible and no service charge.

Chassis Warranty provided by Freightliner Custom Chassis Corporation®

Increased Storage: Oversized pass-through storage re-engineered with slide rails integrated into the floor, creating more storage space and easier access.

OPTI VIEW

OptiView is the RV industry's first LED instrument cluster, featuring bright, clear graphics, colors and menus. 360-degree camera system capability, Bluetooth® connectivity and on-demand operation add convenience and control.

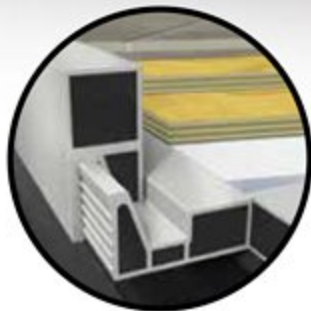


DRIVE TECH

DriveTech's ergonomically-designed steering wheel and easy-to-reach, column-mounted controls turn piloting your RV into a driver-friendly automotive experience.



Huckbolts®: Aerospace-grade, vibration-resistant fasteners for unrivaled strength and reliability.



Maximized Flooring Strength: Double-thick flooring effectively deadens exterior noise and increases durability.

2X STRONG 

ADDITIONAL FEATURES

A Premium SACHS® Shocks increase comfort, safety and dependability. **B I-Beam Construction** achieves a torsion rating that is 30% higher than the competition. **C Dual-Side Fuel Fills** provide high-flow access to the 100-gallon fuel tank from either side of the RV. **D Impressive Towing Capacity** with integrated receiver hitch ratings of 10,000 lbs. and 15,000 lbs., offering a wide range of towing capabilities.* **E Central Protective Raceway** houses air, hydraulic and electrical lines while providing easy access. **F Michelin® Tires w/Polished Aluminum Wheels** give you on-the-road performance and let you arrive in style.



DISCOVERY

38F | 38K | 38N | 38W



DISCOVERY 38F
Shown in Ridgeland Taupe décor
with Cappuccino cabinetry





DISCOVERY 38W
Shown in Savoy Tan décor
with Oxford cabinetry





DISCOVERY 38F
Shown in Ridgeland Taupe decor
with Cappuccino cabinetry



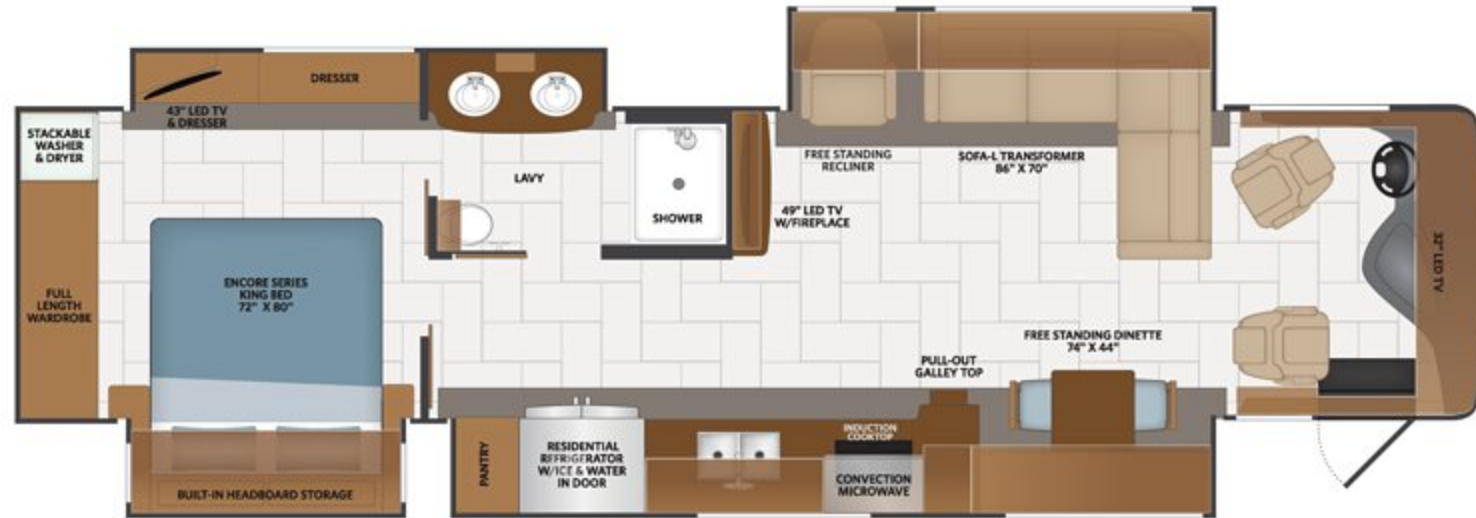




DISCOVERY 38W
Shown in Savoy Tan decor
with Oxford cabinetry

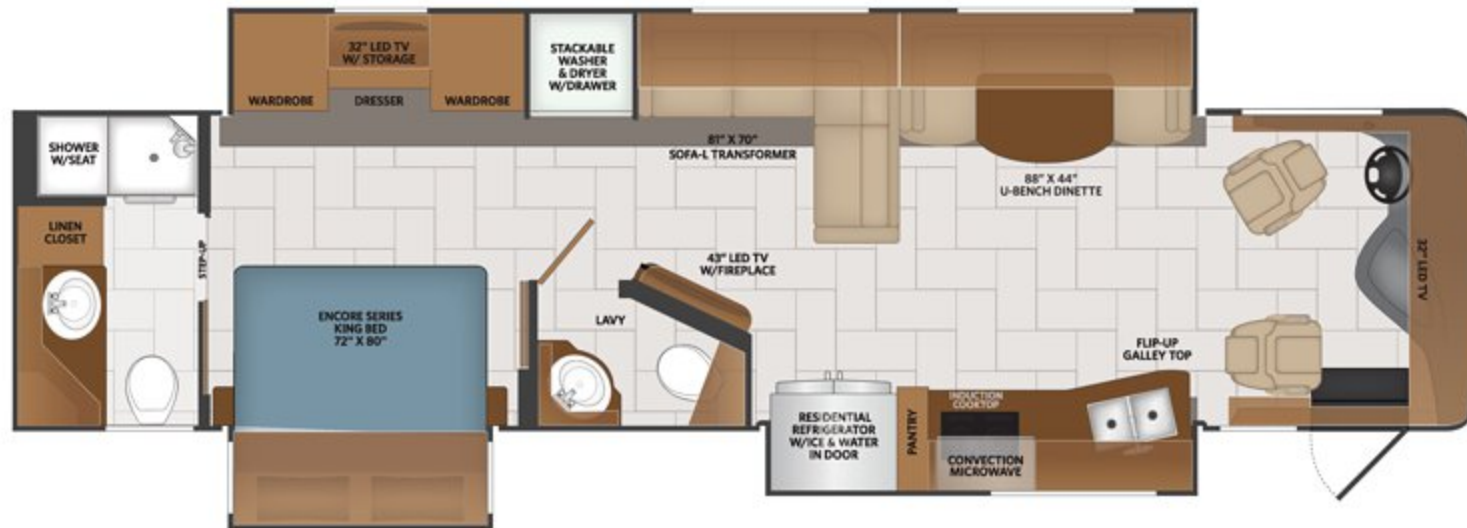
38F

Options:
099, 107, 217,
237, 436, 563,
807, 830



38K

Options:
099, 107, 209,
217, 237, 436,
563, 833



Build your own Discovery at
fleetwoodrv.com/build-your-own

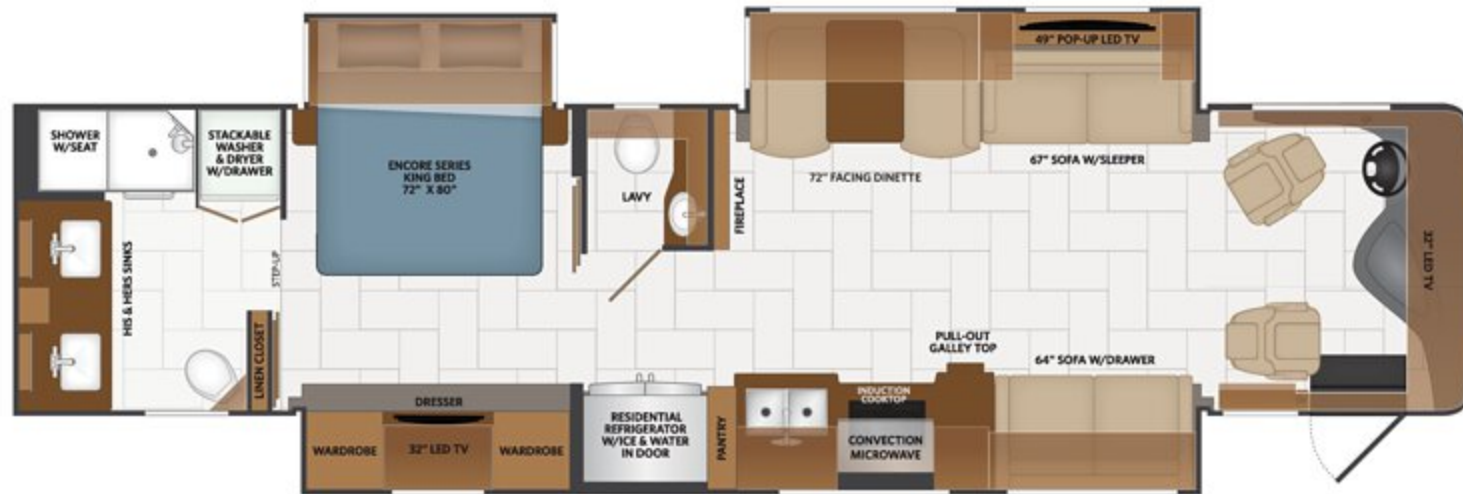
38N

Options:
099, 107, 209,
217, 237, 436,
563, 809, 833



38W

Options:
099, 107, 209,
217, 237, 345,
436, 563, 833



107 DISHWASHER



209 MOTION SOFA WITH POWER



217 HIDE-A-LOFT™ DROP DOWN TWIN BED



345 MID-SHIP FLAT PANEL TV



807 SOFA BED W/MATTRESS



809 L-SHAPED DINETTE



833 FREE STANDING DINETTE W/CREDENZA

AVAILABLE OPTIONS

099	SATELLITE DELETE
107	DISHWASHER
209	MOTION SOFA WITH POWER
217	HIDE-A-LOFT™ DROP DOWN QUEEN BED
237	THIRD ROOF A/C
345	MID-SHIP FLAT PANEL TV

436	CSA FREIGHTLINER® PACKAGE
563	TECHNOLOGY PACKAGE
807	SOFA BED W/MATTRESS
809	L-SHAPED DINETTE
830	FACING DINETTE
833	FREE STANDING DINETTE w/CREDENZA

EXTERIOR GRAPHICS



Crystal



Oxford



Ridgeline



Viper

STATE-OF-THE-ART TECHNOLOGY

Optional Package Upgrade

Technology Package Includes:

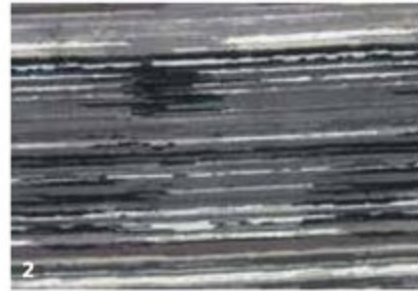
- WiFiRanger™ Sky4 ProPack w/LTE
- WeBoost Cell Booster
- MobileEye Collision Mitigation
- 265 Watt Solar Panel



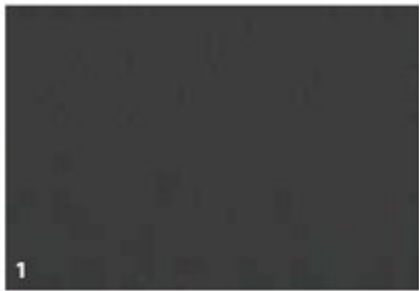
Product information, photography and illustrations included in this publication were as accurate as possible at the time of printing.

INTERIOR DECOR

Celestial Grey



Ridgeland Taupe



Savoy Tan



1 SOFA
2 LIVING ACCENT

3 BEDSPREAD
4 COUNTERTOP

5 FLOORING
6 CARPET

CABINETRY



Cappuccino



Greystone



Oxford

Discovery interior designer recommends:



- Celestial Grey décor with Graystone Cabinetry
- Ridgeland Taupe décor with Cappuccino Cabinetry
- Savoy Tan décor with Oxford and/or Cappuccino Cabinetry (Very versatile and works with all cabinetry colors)
- Celestial Grey décor with Cappuccino Cabinetry is not recommend

Create a customized look that reflects your personal style.

EXTERIOR	38F	38K	38N	38W
Premier Four-Color Full Body Paint	S	S	S	S
Fiberglass Wheel Well Trims	S	S	S	S
One-piece Molded Fiberglass Domed Roof	S	S	S	S
Awning - Electric Patio Awning w/LED Lighting and Wind Sensor Retract	S	S	S	S
Power Entrance Awning w/LED Lighting	S	S	S	S
Slideout Awning Toppers (Above all Slideouts - Dometic)	S	S	S	S
Entrance Door - (Radius Trimmed Door w/Black Interior/Black Screen Door, w/Rotary Latch, Deadbolt Lock and Window)	S	S	S	S
Grab Handle at Entry Door, Acrylic Lighted	S	S	S	S
Baggage Doors Side Swing Aluminum Bus-Style w/Chrome Handles	S	S	S	S
Windows - Large Dark Tinted Frameless Windows	S	S	S	S
LED Patio Lights - (At door and doorside Slideout)	S	S	S	S
Porch Light w/Interior Switch	S	S	S	S
Hydraulic Leveling Jacks Automatic	S	S	S	S
Front, Side and Rear LED Clearance/Marker Lighting	S	S	S	S
Exterior Service Station - Water Pump Switch, Exterior Shower, Black Tank Flush, City Water Hookup, Towel Holder & Drainage Valves, Water Heater Bypass Valve	S	S	S	S
Water Filtration System	S	S	S	S
Exterior Park Cable and Satellite Hookup	S	S	S	S
7-Way Round Tow Connection	S	S	S	S
Rear Ladder - Brushed Aluminum Color	S	S	S	S
RearGard w/Nameplate Full Length	S	S	S	S
Mudflaps Front/Rear	S	S	S	S
Utility Light Rear, Under Hood	S	S	S	S
Antenna - Unidirectional King Controls Jack Antenna	S	S	S	S
Basement Storage LED Lighting	S	S	S	S
Heated Holding Tank Compartment	S	S	S	S
Basement Pass-Through Storage	S	S	S	S
King Universal Stationary Satellite	S	S	S	S
Undercarriage LED Lights	S	S	S	S
Full Bay Slide Trays - 1st Bay Single 90"	S	S	S	S
Roof Vent Rain Covers	S	S	S	S
Exterior Entertainment Center 48" LED TV	S	S	S	S
A/C 3rd Roof	O	O	O	O
CAB EXTERIOR	38F	38K	38N	38W
Front Fiberglass Cap Two-Piece	S	S	S	S
Rear Cap One-Piece	S	S	S	S

Gen Access One-Piece	S	S	S	S
Windshield Automotive One-Piece	S	S	S	S
Daytime Running Lights	S	S	S	S
Tinted Slider Driver/Passenger Windows	S	S	S	S
Automotive Style Windshield Wiper System	S	S	S	S
Remote Power/Heated Mirrors w/Turn Signals and Side Cameras - Chrome	S	S	S	S
Protective Mask Lower Front	S	S	S	S
Gen Slide	S	S	S	S
Blindspot Detection	S	S	S	S
CAB INTERIOR	38F	38K	38N	38W
Dash Inserts - Driver Instrument Panels	S	S	S	S
Instrument Gauges w/Electronic Information Center Black	S	S	S	S
Push Button Start	S	S	S	S
Dash Air Conditioning and Heat High Output	S	S	S	S
Air Suspension Deflation System	S	S	S	S
Electronic Cruise Control	S	S	S	S
Windshield Wipers w/Delay	S	S	S	S
Keyless Entry w/Remote	S	S	S	S
Switch for Power/Heated Chrome Mirrors	S	S	S	S
Switch for Utility Service Compartment	S	S	S	S
Driver Console w/Lower Storage Bin	S	S	S	S
Power Locks w/ Key FOB Control	S	S	S	S
Backup Monitor 7" Color	S	S	S	S
Sirius/XM® Satellite Radio Ready (Requires Subscription)	S	S	S	S
Magnadyne Stereo 10.2" Touchscreen w/AM/FM/CD/DVD/Bluetooth®/Navigation/APP Store/WiFi	S	S	S	S
Driver Chair- Leather w/Reclining Back, Swivel and 6-way Power Controls	S	S	S	S
Passenger Chair- Leather w/Reclining Back, Swivel 6-way Power Controls & Footrest	S	S	S	S
Seat Belts - Three Point Driver & Passenger w/Adjustable Straps	S	S	S	S
12V and USB Accessory Ports	S	S	S	S
110-Volt AC Outlet at Dash and Passenger Area	S	S	S	S
Automotive Style Wrap Around Dash	S	S	S	S
Armrest w/Solid Surface Top - Passenger	S	S	S	S
Roller Shades/Blinds Front Power	S	S	S	S
Driver/Passenger Side Manual Roller Shades/Blinds	S	S	S	S
Stereo Switch Main/Auxiliary Power at Dash	S	S	S	S
Additional Battery Disconnect Switch at Dash	S	S	S	S

Momentary Battery Booster Switch - Connecting Chassis and House Batteries	S	S	S	S
Map Lights	S	S	S	S
Driver/Passenger Overhead Storage Cabinetry	S	S	S	S
Air Horn	S	S	S	S
Automatic Leveling Jacks w/Touchpad Controls	S	S	S	S
Hide-A-Loft™ Power Drop-Down Overhead Bunk w/Mattress	O	O	O	O
INTERIOR	38F	38K	38N	38W
Sofa - 81" x 70" L-Sofa w/Jack-Knife (APEX)	—	S	—	—
Sofa - 86" x 70" L-Sofa w/Mattress (APEX)	S	—	—	—
Sofa - 60" Sofa w/Mattress (APEX)	—	—	S	—
Sofa - 67" Sofa w/Full Mattress (APEX)	—	—	—	S
Sofa - 64" Sofa w/Drawer (APEX)	—	—	—	S
Chair - Recliner Swivel Glide (APEX)	S	—	—	—
Facing Dinette Booth (APEX)	—	—	S	S
Free Standing Dinette w/Credenza	S	—	S	—
U-Shape Dinette (APEX)	S	S	—	—
Fireplace - Electric	S	S	S	S
Sleeper Sofa (APEX)	O	—	—	—
Motion Power Lounge (APEX)	—	O	O	O
Facing Dinette Booth (APEX)	O	—	—	—
L-Shape Dinette (APEX)	—	—	O	—
Free Standing Dinette w/Credenza	O	O	O	O
Vinyl Ceiling Interior Flat Soft Touch	S	S	S	S
Polished Porcelain Tile Flooring Throughout	S	S	S	S
Floor Heat in Living Area	S	S	S	S
Full Extension Drawer Guides Throughout w/Latches	S	S	S	S
Hardwood Throughout	S	S	S	S
Hardwood Ceiling Feature Trim w/Lighting	S	S	S	S
Coordinating Valance w/Lambrequins	S	S	S	S
Manual Day/Night Roller Shades Front/Driver/Passenger - Black/Black	S	S	S	S
Manual Day/Night Roller Shades Throughout - Color/Black	S	S	S	S
Safe-T-View™ Camera System	S	S	S	S
110V/USB Ports Throughout	S	S	S	S
Energy Efficient LED 3" Puck Flush Mount Ceiling and Accent Wall Lighting	S	S	S	S
Washer/Dryer	S	S	S	S
Accent Rope Lighting (Tops/Ceiling Trim)	S	S	S	S

INTERIOR ENTRY	38F	38K	38N	38W
Power Entry Step Cover	S	S	S	S
Entry Step Solid Surface w/LED Accent Lighting	S	S	S	S
Battery Disconnect at Passenger Cabinet	S	S	S	S
Metal Interior Grab Handle at Entry	S	S	S	S
Entry Door Manual Roller Shades and Blinds	S	S	S	S
Step Well Lighted	S	S	S	S
Entrance Steps Automatic	S	S	S	S
KITCHEN	38F	38K	38N	38W
Refrigerator: 36" w Counter Depth, Side-by-Side - 21 cu. ft. w/Exterior Ice & Water Dispenser	S	S	S	S
Cooktop, Induction Electric High-output 2 Burner	S	S	S	S
Microwave Convection Stainless Steel Over the Range 1000W	S	S	S	S
Polished Solid Surface Galley Countertop w/Lighting	S	S	S	S
Shadow Box Glass Tile Backsplash w/Window & Shade	S	S	S	S
Sink - Steel Stainless	S	S	S	S
Surface Sink Covers Polished Solid	S	S	S	S
Faucet Residential Single Handle w/Pullout Sprayer	S	S	S	S
Adjustable Shelves Throughout Kitchen	S	S	S	S
Full Extension Drawer Guides w/ Latches	S	S	S	S
Fantastic® Power Vent w/Wall Switch	S	S	S	S
Pantry	S	S	S	S
Dishwasher	O	O	O	O
BEDROOM OR BUNK AREA	38F	38K	38N	38W
King Size Dream Easy Serenity Memory Foam Mattress w/Adjustable Head (Wolf®)	S	S	S	S
Bunk Beds 28" x 73" w/5" Foam Mattress	—	—	S	—
Designer Bedspread, Pillow Shams & Pillows	S	S	S	S
Headboard	S	S	S	S
Fabric Window Treatments and Lambrequins Coordinating	S	S	S	S
Remote Generator Start Switch	S	S	S	S
SurfX Bedroom Tops	S	S	S	S
Hardwood Raised Panel Doors	S	S	S	S
Hardwood Cabinet Wardrobe Doors w/Mirrors	S	S	S	S
Cedar Lined Rear Wardrobe Closet	S	S	S	S
Dual Rear Wardrobe w/Hinges Rods	—	S	S	S
Full Rear Wardrobe w/Hinges Rod	S	—	—	—
Bunk Bed Barn Doors	—	—	S	—

USB on Nightstands	S	S	S	S
Individual Reading Lights Bed Overhead	S	S	S	S
LAVY	38F	38K	38N	38W
Polished Solid Surface Lavy Countertop	S	S	S	S
Polished Solid Surface Lavy Shelf	—	S	S	—
Feature Lighting at Lavy Top	S	S	S	S
Tile Backsplash	S	S	S	S
Gemstone Undermount Lavy Sink	S	S	S	S
Residential Chrome Double Handle Faucet	S	S	S	S
Deluxe Hardwood Medicine Cabinet w/Mirror	S	S	S	S
Hardwood Raised Panel Doors	S	S	S	S
Fiberglass Colored Shower Pan and Surround	S	S	S	S
Glass Shower Door - Clear	S	S	S	S
Shower Skylight	S	S	S	S
Chrome Shower Head w/On/Off, Sliding Adjustable Bar, Soap Dish/Matching Single Valve Faucet	S	S	S	S
Porcelain Macerator Foot-flush Toilet w/Water Saver	S	S	S	S
Porcelain Foot-flush Toilet w/Water Saver	—	S	S	—
Fantastic® Power Vent w/Wall Switch	S	S	S	S
Hardwood Window Treatment	S	S	S	S
Manual Night Roller Shade - Black	S	S	S	S
Accessories: Dual Towel Rings and Toilet Paper	S	S	S	S
ENTERTAINMENT	38F	38K	38N	38W
LG 32" Flat Screen LED TV (Bedroom)	—	S	S	S
LG 43" Flat Screen LED TV (Bedroom)	S	—	—	—
LG 43" Flat Screen LED TV (Living Area)	—	S	S	—
LG 49" Flat Screen LED TV (Living Area)	S	—	—	—
49" Pop-up TV (Living Area)	—	—	—	S
Bose® Solo 5 TV Sound System (Living Area)	S	S	S	S
Blu-Ray® Player w/Remote	S	S	S	S
LG 32" Flat Screen LED TV (Front Overhead)	S	S	S	S
Entertainment 48" TV JBL® Soundbar w/Bluetooth® Exterior	S	S	S	S
LED TV/DVD Combo in Bunk Bed Area (2)	—	—	S	—
LG 43" Flat Screen LED TV (Living Area)	—	—	—	O
ELECTRONICS & UTILITIES	38F	38K	38N	38W
Air Conditioner: Roof Mount High Efficiency Ducted 15,000 BTU w/Chill Grill/Rear Heat Pump (3)	S	S	S	S
Aqua Hot® 400	S	S	S	S
Firefly Multiplex Wiring	S	S	S	S
Service: 50 AMP 120-volt Service Panel	S	S	S	S

Converter: 60 AMP Power Converter - Precision Circuits	S	S	S	S
Inverter: Single 2000W Pure Sine w/Remote - Magnum	S	S	S	S
Energy Management System (EMS) w/Soft Start - Precision Circuits	S	S	S	S
Neutral Loss Protection	S	S	S	S
Generator: 8kW Onan® Quiet Diesel	S	S	S	S
Generator Auto Changeover	S	S	S	S
Auto Gen Start	S	S	S	S
Deep Cycle House Batteries 6V (4)	S	S	S	S
Water Pump: 12V 3GPM High Capacity Shurflo®	S	S	S	S
Water Purification System	S	S	S	S
Black Water Tank Flush	S	S	S	S
Gravity Water Fill - Driver/Passenger Side	S	S	S	S
Cable TV/Satellite Hookup	S	S	S	S
Toilet Tank San-T-Flush System	S	S	S	S
Touch Sensor Tank Monitoring and Battery Readout	S	S	S	S
CO/Smoke Detectors/Fire Extinguisher	S	S	S	S
GFCI Receptacle in Exterior Storage	S	S	S	S
Central Vacuum System	S	S	S	S
Surge Guard Transfer Switch	S	S	S	S
Power Cord Reel	S	S	S	S
Power Cord Reel	S	S	S	S
100W Solar Panel	S	S	S	S
Technology Package (WiFiRanger™ Sky4 ProPack w/LTE, WeBoost Cell Booster, MobileEye Collision Mitigation, 265 Watt Solar Panel)	S	S	S	S

**CSA Standards may require substitution or deletion to achieve conformance



BLIND SPOT DETECTION

Ensure smart, safe driving with Velvac® blind-spot upgraded mirrors for your Discovery. A safety feature, where a light will illuminate on the side mirror if an object is in the blind spot ensuring safe travels. Mirrors are power, heated, remote with turn signals and side cameras.



AQUA-HOT®

Experience even, quiet heating and on-demand hot water with the Aqua-Hot 400D system. **Aqua-Hot** HEATING SYSTEMS INC.



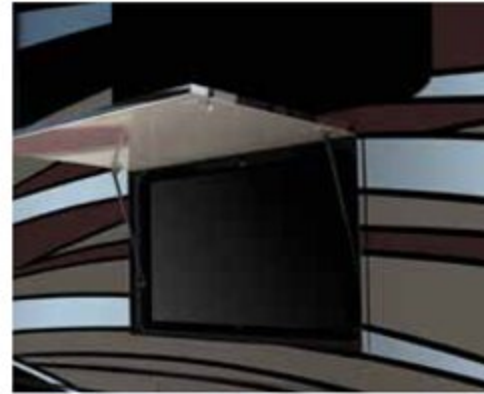
HIDE-A-LOFT™ DROP DOWN BED

Invite more guests on your road trip without compromising space featuring industry-leading headroom and up to 500lb. capacity.



GENEROUS EXTERIOR STORAGE

Take along more of what you need and bring home more of what you want, with deep, easy-to-clean pass-through compartments.



EXTERIOR 48" LED TV ENTERTAINMENT CENTER

Keep the party outside with this 48" TV JBL® Soundbar with Bluetooth® Entertainment Center.



RESIDENTIAL APPLIANCES

All the comforts of home with Whirlpool® appliances including a side-by-side 21 cu. ft. refrigerator with exterior in-the-door ice and water dispenser. Whirlpool microwave and Fischer Paykel dishwasher completes your dream kitchen.

FRONT FLOOR HEATING

Front zone floor heating is standard on Discovery. Stay warm on the inside if the temperatures drop outside on any of your adventures.



FIRST CLASS DESIGNED FURNITURE

Relax in style with modern, luxurious furniture from Apex custom furniture designed exclusively for Fleetwood RV. Stretch out and relax after logging miles on the road all day.



OUR VERY OWN FLEETWOOD RV MOTORHOME SERVICE CENTERS

At Fleetwood RV, we strive to deliver peace-of-mind at every turn. Our devotion to customer service starts with our trusted dealer network and spans to our own staff of motorhome service professionals at REV Recreation Group's regional technical centers. The motorhome service centers are strategically located throughout the United States to provide you convenient service wherever the road takes you.

Below, you'll find the closest motorhome service center, as well as a list of the other centers. Please visit www.fleetwoodrv.com/motorhome-service-centers to schedule a Service Appointment.

East Coast
REV Technical Center
800-509-3417

West Coast
REV Technical Center
877-466-6226

ROADSIDE ASSISTANCE. ANYWHERE. ANYTIME.

24/7 CUSTOMER SUPPORT FOR:

- FUEL
- TOWING
- BATTERY
- SLIDE-OUT ISSUES
- LOCKSMITH
- AND MUCH MORE!

1-855-268-0414



One-year of REV Assist is free with the purchase of any new 2020 Fleetwood. You may extend your coverage after the first year at www.revgroup.com/rev-assist.

DISCOVERY

CHASSIS	38F	38K	38N	38W
Wheelbase (inches)	263"	252"	252"	263"
Front GAWR (lbs)	12,400	12,400	12,400	13,600
Rear GAWR (lbs) - 360HP	21,000	21,000	21,000	21,000
GCWR (lbs)	43,400	43,400	43,400	43,400
Hitch Rating Weight (lbs)	10,000	10,000	10,000	10,000
Tongue Weight (lbs)	1,000	1,000	1,000	1,500
Fuel Capacity (gal)	100	100	100	100

DIMENSIONS AND CAPACITIES	38F	38K	38N	38W
Overall Length (inches)	40' 1"	38' 8"	38' 8"	40' 1"
Overall Height (with A/C)	12' 10"	12' 10"	12' 10"	12' 10"
Overall Width (maximum)	102"	102"	102"	102"
Interior Height (maximum)	84"	84"	84"	84"
Interior Width (maximum)	96"	96"	96"	96"
Patio Awning Width (ft. & inches)	19' 6"	10' 8"	18'	18'
Interior Storage (cu. ft.)	166	151	151	160
Exterior Storage (cu. ft.)	142	140	148	142
Fresh Water Holding Tank (gal)	105	127	127	105
Grey Water Holding Tank (gal)	75	75	75	75
Black Water Holding Tank (gal)	50	50	50	50
Aqua-Hot 400	S	S	S	S

Product information, photography and illustrations included in this publication were as accurate as possible at the time of printing.



FREEDOM BRIDGE® CHASSIS

Standard 360HP

Model: Freightliner® XCS Series

Engine: Cummins ISB 6.7L

Transmission: Allison® 3,000 MH 6-Speed w/Electronic Shifter

Alternator: Delcom Remy 160 Amp

Torque: 800 lb.-ft. @ 1,800 RPM

Horsepower: 360HP

DISCLAIMERS

- GVWR (Gross Vehicle Weight Rating) is the maximum permissible weight of this fully loaded motorhome. The GVWR is equal to or greater than the sum of the (UVW) unloaded vehicle weight plus the (OCCC) occupant cargo-carrying capacity.
 - GAWR (Gross Axle Weight Rating) is the maximum permissible loaded weight a specific axle is designed to carry.
 - GCWR (Gross Combined Weight Rating) is the value specified by the motor home manufacturer as the maximum allowable loaded weight of this motor home with its towed vehicle. Towing and braking capacities may be different. Refer to Fleetwood and chassis manufacturer's manuals for complete information.
 - Length measured from front bumper to rear bumper (excludes accessories).
 - Excludes safety equipment and awnings.
 - Motorhomes feature a body width over 96" which will restrict your access to certain roads. Before purchasing, you should research any state and/or province road laws which may affect your usage.
 - Tank manufacturer's listed water capacity (WC). Actual propane capacity is 80% of water listing as required by the safety code.
- † The chassis manufacturer recommends the installation of a supplemental brake control system to activate the brakes on the vehicle or trailer you are towing. Hitch receiver ratings expressed are maximum for the hitch receiver installed and may require the purchase of additional equipment that is dependent on the weight of the towed load. Consult with hitch receiver manufacturer for further information.
- * UVW and OCCC are found on the label containing the federal certification tag in each RV.
- ** Seatbelts and locations are shown in the brochure for display purposes only. Actual numbers and locations will vary by model.
- *** All 2020 REV Recreation Group motorhomes include a limited one year/15,000-mile coach warranty and three-year/45,000-mile structural warranty, whichever occurs first, and is fully transferable for the first 12 months.

FLEETWOOD MOTORHOME ASSOCIATION

As a Fleetwood RV owner, you're invited to become a member of the Fleetwood Motorhome Association (FMA). Becoming a member is the perfect way to meet other Fleetwood owners who love to travel across America and share in the RV lifestyle. Visit the FMA website at www.fma4fun.org to learn more and join the fun.

CONTACT US

To locate a dealer near you, visit our website at www.fleetwoodrv.com or call 1-800-322-8216. We can also be contacted at Fleetwood RV Customer Relations, P.O. Box 1007, Decatur, IN 46733.

IMPORTANT—PLEASE READ: Product information, photography and illustrations included in this publication were as accurate as possible at the time of printing. For further product information and changes, please visit our website at www.fleetwoodrv.com or contact your local Fleetwood RV dealer. Prices, materials, design and specifications are subject to change without notice. All weights, fuel, liquid capacities and dimensions are approximate. Fleetwood RV has designed its recreational vehicles to provide a variety of uses for its customers. Each vehicle features optimal seating, sleeping, storage and fluid capacities. The user is responsible for selecting the proper combination of loads (i.e., occupants, equipment, fluids, cargo, etc.) to ensure that the vehicle's capacities are not exceeded.

YOUR LOCAL DEALER



Fleetwood RV is part of REV Recreation Group, a division of REV Group, Inc., a family of 29 industry-leading motor vehicle brands. At REV Group, we innovate, design and build products that connect and protect thousands of people every day—our trusted vehicles are engineered with the utmost rigor and precision to deliver the highest levels of performance, reliability, durability and safety.



IMPORTANT—PLEASE READ: Product information, photography and illustrations included in this publication were as accurate as possible at the time of printing. For further product information and changes, please visit our website at www.fleetwoodrv.com or contact your local Fleetwood RV dealer. Prices, materials, design and specifications are subject to change without notice. All weights, fuel, liquid capacities and dimensions are approximate. Fleetwood RV has designed its recreational vehicles to provide a variety of uses for its customers. Each vehicle features optimal seating, sleeping, storage and fluid capacities. The user is responsible for selecting the proper combination of loads (i.e., occupants, equipment, fluids, cargo, etc.) to ensure that the vehicle's capacities are not exceeded.

www.fleetwoodrv.com

©2019 REV Group, Inc. Printed in the USA. 10/19. Model Year 2020, First Edition.

Part #: L93-0020