

2020

[fleetwoodrv.com](http://fleetwoodrv.com)

CLASS A GAS | FLAIR



 **FLEETWOOD RV**  
FLAIR



2 | INTRO

4 | CONSTRUCTION

6 | INTERIOR GALLERY

12 | FLOORPLANS

14 | EXTERIOR GRAPHICS

15 | DECOR

16 | STANDARDS AND OPTIONS

18 | OUTSTANDING STANDARDS AND OPTIONS

19 | SPECIFICATION CHARTS

 **FLEETWOOD RV**



## EXPERIENCE AFFORDABLE EXCELLENCE.

Incredible standard features are what set this classic Fleetwood model apart from the competition—such as a 50-inch exterior TV, full-size patio awning, accommodations for six or more with the 600-pound capacity Hide-A-Loft® queen bed and generous pass-through storage. You can also plug in an auxiliary solar panel or hook up a full-size grill to the propane access line. And its looks are one-of-a-kind, too, thanks to a low profile, modern front cap.

Plus, we've added some amazing features to the 2020 Flair, including the Bilstein® Steering Stabilizer System, the WiFiRanger™ Sky4 DC system, six-panel doors and frosted glass cabinets.

If you want the perfect companion for your next adventure, then Flair is it.







**WE'LL BRING THE POWER,  
YOU BRING THE PEOPLE.**

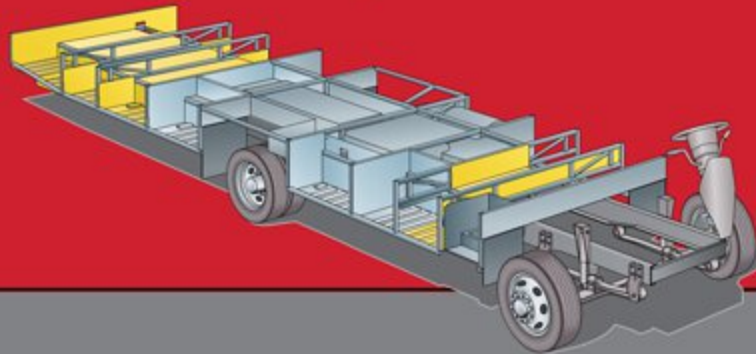


**POWER  
PLATFORM**

### The Power Platform Chassis™

The Power Platform puts strength, stability, and reliability front and center. Perfect for trips requiring large carrying capacities, and built to store everything you need with spacious pass-through storage, the Power Platform is the ideal chassis for optimum balance and control — Found on Fleetwood gas motorhomes.

Every new adventure requires a solid foundation. The Power Platform chassis is designed with balance, control, a smooth ride, and ample space in mind, all working together to give you a ride like no other RV can provide.



#### RV OWNERCARE

Limited one-year/15,000-mile coach warranty and three-year/45,000-mile structural warranty, whichever occurs first, and it is fully transferable for the first 12 months. RV OWNERCARE is one of the RV industry's most comprehensive programs and includes systems, appliances, components and construction, with no deductible and no service charge.

Chassis Warranty provided by Ford®

**FLEETWOOD RV®**

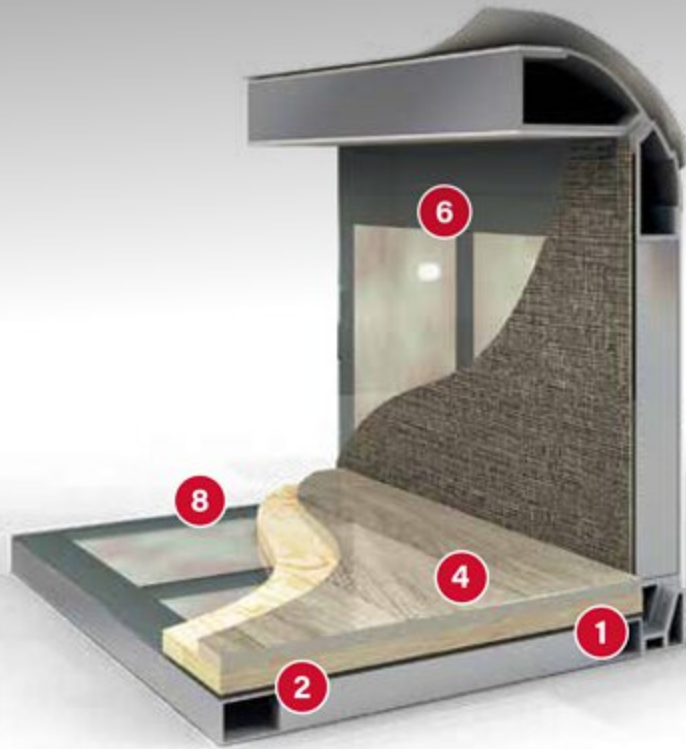


**We build strength  
and quality from the  
inside out.**

Fleetwood's exclusive Powerlock™ system is integrated into all Fleetwood RV Class A Gas models.



# At Fleetwood RV, it's not just what you see that matters. It's what you don't.



At Fleetwood, we don't settle for anything less than the best and neither should you. That is why every Fleetwood features industry-leading materials and construction standards.

## 1 PowerLock System™

### Interlocking Floors, Walls, Ceiling

Fleetwood's interlocking aluminum extrusion wall-joint system integrates floor, sidewall and roof assembly into one locked-together overall structure for long-term performance and durability.

## 2 Precision Welded Joints

The all aluminum hull structure is engineered and built to precise tolerances and then precision welded to ensure strength and durability on eventhe roughest road trip.

## 3 Tuff-Coat Fiberglass Walls

Thicker than other manufacturers, our Tuff-Coat fiberglass walls provide a durable skin and is the perfect surface for an automotive style finish.

## 4 Thick Robust Floor

Thicker than the industry standard, Fleetwood engineered the 1" thick floor for more sound deadening and more insulation which results in a quieter, more comfortable ride no matter the weather or terrain outside.

## 5 Solid Bead-Foam Insulation™

Fleetwood's above-standard insulation material and process doesn't allow settling or air gaps to form. There is no forcing the precision cut insulation into position like the roll-type pink fiberglass insulation used by other manufacturers.

## 6 Loctite® Industrial Adhesive

Engineered to meet bonding, sealing and assembly requirements for a durable structure with no de-lamination.

## 7 No Wood Substrate

Unlike most Class A motorhome manufacturers, you won't find any wood substrate on the exterior walls.

## 8 1/2" Plywood Subfloor

Thicker than most competitors who use OSB or chip board, the integrated 1/2" subfloor provides a solid surface for flooring and eliminates movement and flexing while traveling.

## 9 Vacu-Bond™ Construction

Fully sealed and weather-resistant, the vacuum-bonded assemblies combine materials and construction for a straight, solid integrated wall that is better suited to withstand the rigors of the road. An adhesive bonding process applies up to 415,000 pounds of vacuum pressure to the welded-aluminum sidewall frame, bead-foam insulation, thick Tuff-Coat fiberglass skin and inner wall materials, far exceeding industry standards.

## 10 CNC Precision Routed Walls and Floors

Computer driven routers precisely route walls and floors to fit exact specifications to eliminate gaps, misalignments and provide for a more solid integrated overall structure.

Each of these advantages have been engineered to deliver superior reliability, durability and most of all, customer satisfaction.







## FLAIR

28A | 29M | 32S | 34J | 35R







FLAIR 325  
Shown in Cobblestone decor  
with Cappuccino cabinetry





FLAIR 325  
Shown in Cobblestone decor  
with Cappuccino cabinetry









FLAIR 325  
Shown in Cobblestone decor  
with Cappuccino cabinetry







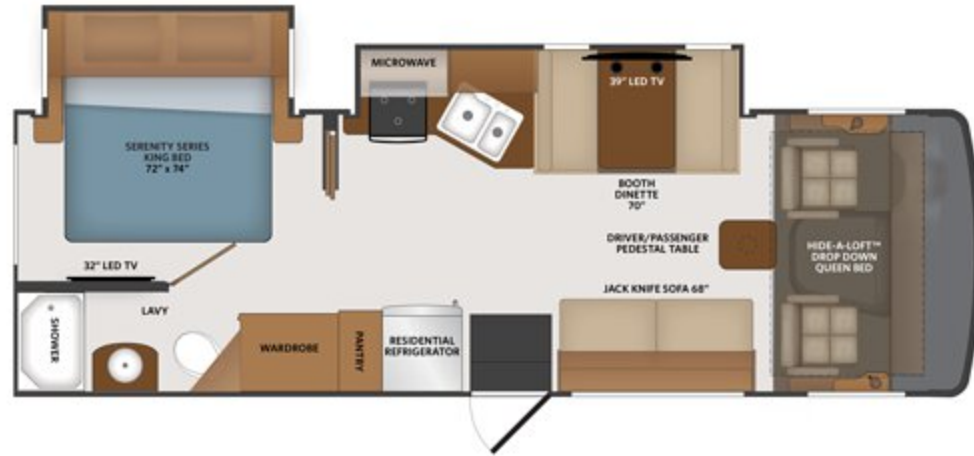
 **FLEETWOOD RV**

Build your own Flair at  
[fleetwoodrv.com/build-your-own](https://fleetwoodrv.com/build-your-own)



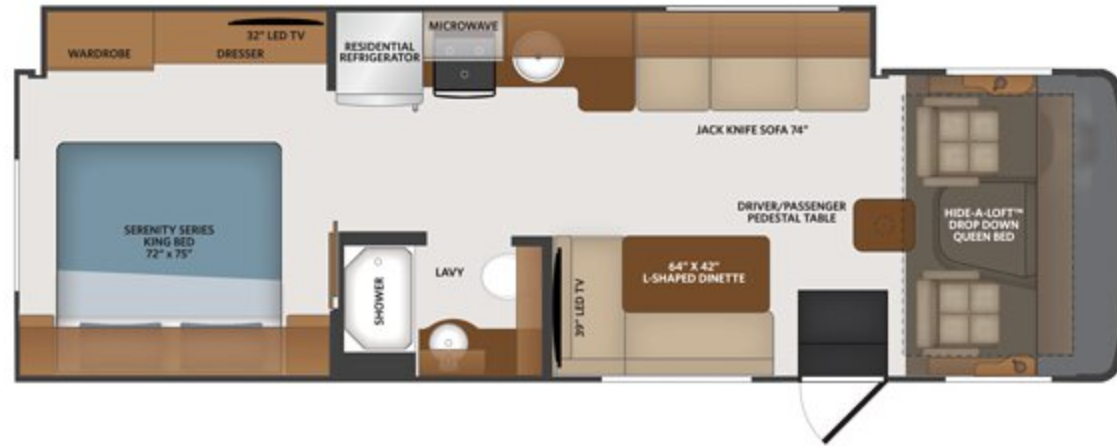
**28A**

Options:  
089, 096, 105,  
194, 230, 342,  
343, 435, 447,  
605, 953



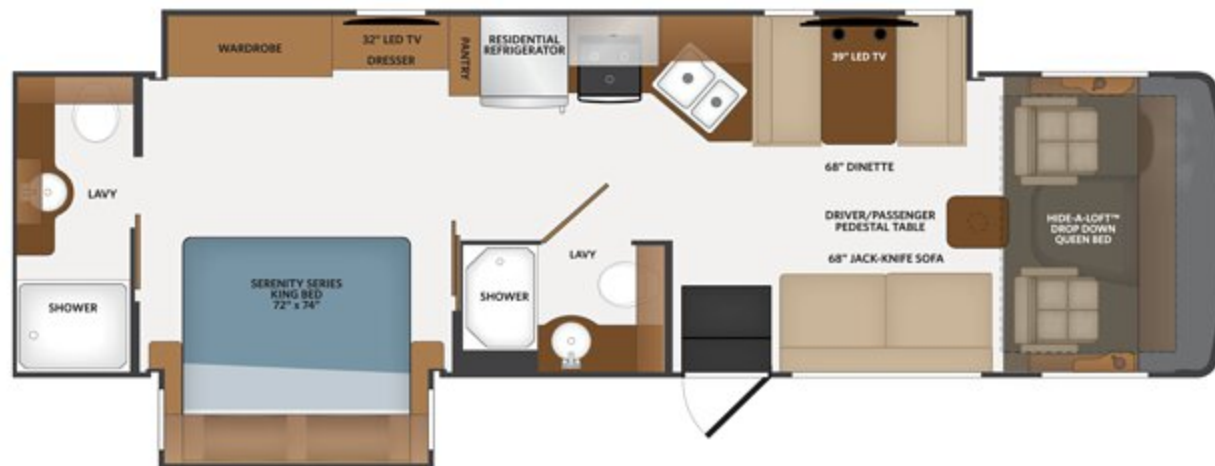
**29M**

Options:  
089, 096, 105,  
230, 331, 435,  
447, 605, 830, 953



**32S**

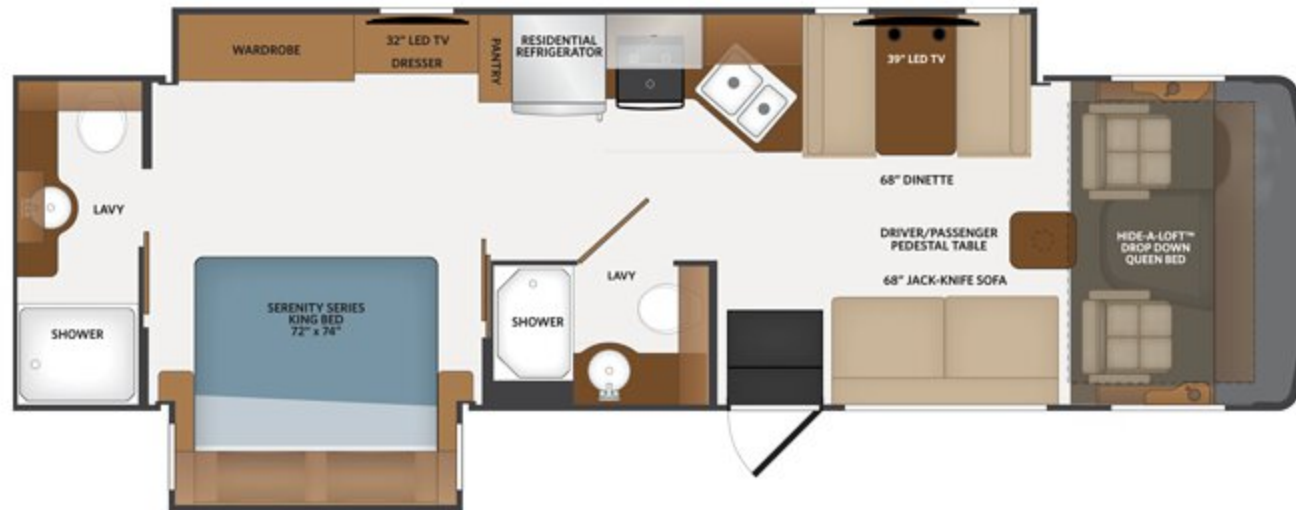
Options:  
089, 096, 105,  
194, 230, 331,  
435, 447, 605, 953





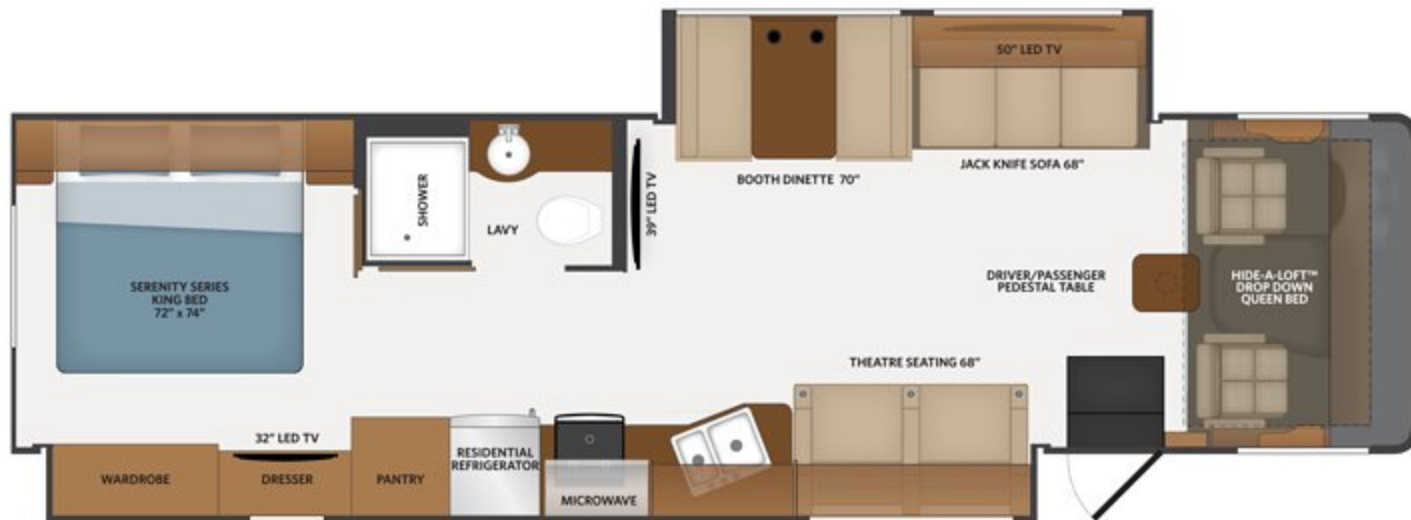
### 34J

Options:  
089, 096, 105,  
194, 230, 435,  
447, 605, 953



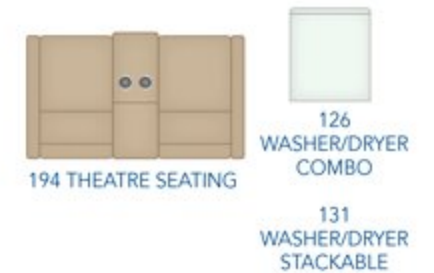
### 35R

Options:  
089, 096, 105,  
126, 131, 230,  
435, 447, 605, 953



#### AVAILABLE OPTIONS

089	UPGRADED WIFI PACKAGE LTE (CELLULAR INTERNET MODEM)
096	UNIVERSAL KING ONE SATELLITE SYSTEM
105	DOMETIC 8' CF DOUBLE DOOR REFRIGERATOR LP
126	WASHER/DRYER - ALL IN ONE COMBO
131	WASHER/DRYER - STACKABLE
194	THEATRE SEATING SOFA
230	ROOF VENT RAIN COVERS
331	5.5KW GEN W/DUAL A/C
342	DUAL A/C W/EMERGENCY SYSTEM - LP REFRIGERATOR
343	DUAL A/C W/EMERGENCY SYSTEM - RESIDENTIAL REFRIGERATOR
435	CSA-PACKAGE FORD®
447	CSA-FORD® INSTRUMENT PANEL
605	DUAL GLAZED WINDOWS
830	FACING DINETTE
953	POWER DRIVER SEAT





## EXTERIOR GRAPHICS

### VINYL OPTION



Compass



Wave

### PARTIAL PAINT

\*(PARTIAL PAINT IS NOT AVAILABLE ON 28A)



Compass Partial Paint



Wave Partial Paint



### STATE-OF-THE ART TECHNOLOGY & SAFETY — STANDARDS & OPTIONS

WiFiRanger™Sky4 DC	S
WiFiRanger™Sky4 ProPack w/LTE (Cellular Internet Modem) Includes Cell Booster and GPS	O
Solar Pre-wire	O



## INTERIOR DECOR

Cobblestone



French Roast



1 SOFA  
2 LIVING ACCENT

3 BEDSPREAD  
4 COUNTERTOP

5 FLOORING  
6 CARPET

## CABINETRY



Cappuccino



Greystone



Oxford

### BILSTEIN® STEERING STABILIZER SYSTEM

Every Flair is standard equipped with this shock absorber system that dampens the bumps and vibrations of the road in the steering system. Bilstein allows for easier control to the front-end steering.



### Flair interior designer recommends:



- Cobblestone décor with Graystone Cabinetry
- French Roast décor with Oxford or Cappuccino Cabinetry

**Create a customized look that reflects your personal style.**



EXTERIOR	28A	29M	32S	34J	35R
Aerodynamic Fiberglass Cap w/ Hood and Automotive Headlighting	S	S	S	S	S
Rear Laminated Wall w/Automotive Lighting	S	S	S	S	S
ABS Wheel Well Trims	S	S	S	S	S
TPO Roof - Thermoplastic Polyolefin	S	S	S	S	S
Legged Electric Patio Awning w/LED Lighting	S	S	S	S	—
Legless Electric Patio Awning w/LED Lighting	—	—	—	—	S
Entry Awning	—	—	—	—	S
Radiused Entry Door w/Screen door, Strut, Latch, Deadbolt Lock	S	S	S	S	S
Window Above Entry Door	S	S	S	S	—
Slideout Awning Toppers Above All Slideouts	S	S	S	S	S
Slam Latch Luggage Door Handles - Black	S	S	S	S	S
Entry Grab Handle	S	S	S	S	S
Exterior Power Entry Step w/Light	S	S	S	S	S
Bottom/Side Swing Radiused, Color Matched Fiberglass Luggage Doors	S	S	S	S	S
Single Pane Frameless Windows	S	S	S	S	S
Dual Pane Frameless Windows	O	O	O	O	O
Patio LED Light	S	S	S	S	S
Clearance and Marker Lighting LED - Front/Side/Rear	S	S	S	S	S
Gravity Fresh Water Fill	S	S	S	S	S
Enclosed Exterior Waste Station w/ Discharge Valves	S	S	S	S	S
Trailer Hitch w/7-Way Round Tow Connection (8,000 lbs.)	S	S	S	S	—
Trailer Hitch w/7-Way Round Tow Connection (15,000 lbs.)	—	—	—	—	S
TV Antenna - Unidirectional King Controls Jack Antenna	S	S	S	S	S
LP Connection	S	S	S	S	S
Four Point Fully Automatic Hydraulic Leveling Jacks	S	S	S	S	S
Rear Ladder	S	S	S	S	S

Vinyl Graphics	S	S	S	S	S
Partial Paint w/Vinyl Graphics	—	O	O	O	O
Roof Vent Rain Covers	O	O	O	O	O
Roof Mount Satellite Dish Prep	S	S	S	S	S
King® Universal Satellite System	O	O	O	O	O
Exterior Kitchen w/Mini-Fridge/ Microwave, Sink/Storage	—	S	—	S	—
<b>CAB EXTERIOR</b>	<b>28A</b>	<b>29M</b>	<b>32S</b>	<b>34J</b>	<b>35R</b>
Automotive Windshield One-piece	S	S	S	S	S
Daytime Running Lights	S	S	S	S	S
Driver/Passenger Slider Windows	S	S	S	S	S
Automotive Style Windshield Wiper System	S	S	S	S	S
Passenger Doggy Window	S	S	S	S	S
Exterior Mounted Sideview Cameras	S	S	S	S	S
Power/Heated Mirrors w/Turn Signals - Remote, Black	S	S	S	S	S
<b>CAB INTERIOR</b>	<b>28A</b>	<b>29M</b>	<b>32S</b>	<b>34J</b>	<b>35R</b>
Driver Chair w/Reclining Back, Swivel and Manual Controls	S	S	S	S	S
Driver Chair w/Reclining Back, Swivel and 6-way Power Controls	O	O	O	O	O
Passenger Chair w/Reclining Back, Swivel and Manual Controls	S	S	S	S	S
Side Panels w/Cupholders Driver/ Passenger	S	S	S	S	S
Cupholders- Driver/Passenger	S	S	S	S	S
Windshield Roller Shade - Power	S	S	S	S	S
Window Manual Roller Shades - Driver/Passenger	S	S	S	S	S
Overhead Map Lighting - Driver/ Passenger	S	S	S	S	S
Black Instrument Gauges w/ Electronic Information Center	S	S	S	S	S
High-output Dash Air Conditioning and Heat	S	S	S	S	S
Electronic Cruise Control	S	S	S	S	S
Windshield Wipers w/Delay	S	S	S	S	S
Remote Switch for Power/Heated Mirrors	S	S	S	S	S

Steering Wheel w/Tilt Column	S	S	S	S	S
Boss® Stereo w/AM/FM/Bluetooth® w/Backup Camera Screen	S	S	S	S	S
Side Console Dash Stereo Speakers	S	S	S	S	S
USB and Auxiliary Inputs	S	S	S	S	S
Seat Belts - 3 Point Driver & Passenger w/Adjustable Straps	S	S	S	S	S
12V Accessory Ports	S	S	S	S	S
110-Volt AC Outlets	S	S	S	S	S
Automotive Style Dash w/Work Station	S	S	S	S	S
Generator On/Off Switch	S	S	S	S	S
Colored Fiberglass Engine Cover w/Snack Tray	S	S	S	S	S
Auto Leveling Jack Controls	S	S	S	S	S
Driver/Passenger Center Table	S	S	S	S	S
Auxiliary Start Switch	S	S	S	S	S
Hide-A-Loft™ Drop Down Queen Bed	S	S	S	S	S
<b>INTERIOR</b>	<b>28A</b>	<b>29M</b>	<b>32S</b>	<b>34J</b>	<b>35R</b>
Sofa - Jack-knife	S	S	S	S	S
Sofa - Theatre Seating	O	—	O	O	S
Facing Booth Dinette w/Dinette Table and Single Door Storage	S	O	S	S	S
L-Shape Dinette w/Single Door Storage	—	S	—	—	—
Solid Surface Galley Top w/Sink Covers	—	—	S	S	S
SurfX Tops Throughout (Excluding Galley)	—	—	S	S	S
SurfX Tops Throughout	S	S	—	—	—
Feature Wall w/Accent Wall Covering	S	S	S	S	S
Flat Ceiling w/Soft Touch Vinyl	S	S	S	S	S
Lino Flooring Throughout	S	S	S	S	S
Non-Ozite Lined Cabinet Interiors w/Adjustable Shelving	S	S	S	S	S
Full Extension Drawer Guides w/Latches	S	S	S	S	S
Hidden Euro Hinges and Struts	S	S	S	S	S
Cabinet Doors-Solid Wood Raised Panel	S	S	S	S	S



Galley Overhead Glass Inserts	S	S	S	S	S
Slideout Fascia - Interior Wood Color Coordinating	S	S	S	S	S
Valances w/Lambrequins	S	S	S	S	S
Manual Night Roller Shades	S	S	S	S	S
Energy Efficient 3" LED Flush Mount Ceiling and Under Cabinet Reading Lights Throughout	S	S	S	S	S
Faucets/Fixtures/Hardware Brushed Nickel	S	S	S	S	S
<b>INTERIOR ENTRY</b>	<b>28A</b>	<b>29M</b>	<b>32S</b>	<b>34J</b>	<b>35R</b>
Battery Disconnect	S	S	S	S	S
Interior Entry Grab Handle - Metal	S	S	S	S	S
Entry Steps w/Molded Rubber Tread	S	S	S	S	S
<b>KITCHEN</b>	<b>28A</b>	<b>29M</b>	<b>32S</b>	<b>34J</b>	<b>35R</b>
Refrigerator - Residential Stainless Steel - Insignia	S	S	S	S	S
Refrigerator - LP, 8 cu.ft. - Dometic	O	O	O	O	O
Range w/Oven 3-Burner Drop-In	S	S	S	S	S
Microwave Stainless Steel Over the Range	S	S	S	S	S
Backsplash	S	S	S	S	S
Sink Stainless Steel, Single Bowl	—	S	—	—	—
Sink Stainless Steel, Double Bowl	S	—	S	S	S
Residential Single Handle Faucet w/Pullout Sprayer	S	S	S	S	S
Adjustable Shelves Throughout	S	S	S	S	S
Power Ceiling Vent	S	S	S	S	S
<b>BEDROOM OR BUNK AREA</b>	<b>28A</b>	<b>29M</b>	<b>32S</b>	<b>34J</b>	<b>35R</b>
King Bed	S	S	S	S	S
Bunk Beds	—	—	—	S	—
Designer Bedspread, Headboard, Pillow Shams & Pillows	S	S	S	S	S
120V/USB Ports	S	S	S	S	S
Reading Lights	S	S	S	S	S
<b>LAVY</b>	<b>28A</b>	<b>29M</b>	<b>32S</b>	<b>34J</b>	<b>35R</b>
Sink Top-Mounted Stainless Steel	S	S	S	S	S
Residential Faucet - Single Handle	S	S	S	S	S

Medicine Cabinet w/Mirror	S	S	S	S	S
ABS Shower Surround	S	S	S	S	S
Glass Shower Door	S	S	S	S	S
Shower Skylight	S	S	S	S	S
Metal Shower Head w/Sliding Adjustable Bar, Soap Dish/Matching Single Valve Faucet	S	S	S	S	S
Standard Toilet - Porcelain	S	S	S	S	S
Macerator Toilet - Porcelain	—	—	S	—	—
Power Ceiling Vent	S	S	S	S	S
<b>ENTERTAINMENT</b>	<b>28A</b>	<b>29M</b>	<b>32S</b>	<b>34J</b>	<b>35R</b>
32" Flat Screen LED TV (Bedroom)	S	S	S	S	S
32" Flat Screen LED TV (Bunk)	—	—	—	S	—
39" Flat Screen LED TV (Living Area)	S	S	S	S	S
50" Flat Screen LED TV (Living Area)	—	—	—	—	S
Living Area Ceiling Speakers	S	S	S	S	S
Bluetooth® Coach System in Bedroom w/Exterior Speakers	S	S	S	S	S
Exterior Entertainment Center w/50" LED TV	S	S	S	S	S
<b>ELECTRIC &amp; UTILITIES</b>	<b>28A</b>	<b>29M</b>	<b>32S</b>	<b>34J</b>	<b>35R</b>
A/C - Single 15,000 BTU w/Chill Grill	S	S	S	—	—
A/C - Dual 13,500 BTU	—	O	O	S	S
A/C - Dual 11,000 BTU w/4.0 Generator & EMS	O	—	—	—	—
Furnace - 30,000 BTU	S	S	S	—	—
Furnace - 34,000 BTU	—	—	—	S	S
50 AMP Service	S	S	S	S	S
55 AMP Power Converter	S	S	S	S	S
Inverter - Single 1000w	S	S	—	—	—
Inverter - Single 2000w	—	—	S	S	S
WiFiRanger™Sky4	S	S	S	S	S
WiFiRanger™SkyPro Pack	O	O	O	O	O

Solar Panel Pre-Wire	S	S	S	S	S
Multiplex Wiring Control System w/4.3" Touchscreen Panel	—	—	S	S	S
Auxiliary Batteries 6V (2)	S	S	S	S	S
Generator - 4.0kW Onan® Quiet	S	S	S	—	—
Generator - 5.5kW Onan® Quiet	—	O	O	S	S
Auto Gen Start	—	S	S	S	S
Master Battery Disconnect Switch	S	S	S	S	S
Water Pump - 12V 3GPM High Capacity Shurflo® Water Pump	S	S	—	S	S
Water Pump - 12V 5.3GPM High Capacity AquaJet Water Pump	—	—	S	—	—
Water Purification System (Whole Coach)	S	S	S	S	S
Water Heater Bypass System	S	S	S	S	S
City Water Hookup	S	S	S	S	S
Exterior Shower	S	S	S	S	S
Cable TV/Satellite Hookup	S	S	S	S	S
Black Holding Tank Flush System - San-T-Flush	S	S	S	S	S
Single Location Monitor Panel w/LPG, Touch Sensor Tank Monitoring/Battery Readouts	S	S	—	—	—
Fire Extinguisher, LP/CO and Smoke Detectors	S	S	S	S	S
GFCI Receptacle in Exterior Storage	S	S	S	S	S
Washer/Dryer Prep - Combo	—	—	—	—	S
Washer/Dryer - Combo	—	—	—	—	O
Washer/Dryer - Stackable	—	—	—	—	O

\*\*CSA Standards may require substitution or deletion to achieve conformance



FLAIR — OUTSTANDING STANDARDS AND OPTIONS



**RENEWABLE SAFE POWER**  
Each Flair is pre-wired for a solar panel which allows the adding of an after market solar panel.



**WIFI RANGER™ SKY4 DC**  
Boost a weak signal to get online in no time with this private secure WiFi booster.

**WIFI RANGER™ SKY4 PROPACK w/LTE**  
Upgrade to this cellular internet modem that includes a cell booster and GPS upgrade.



**HIDE-A-LOFT™ DROP DOWN BED**  
Invite more guests on your road trip without compromising space with this queen bed, featuring industry-leading headroom and up to 600lb capacity.



**TOUCH PAD ELECTRONICS PANEL**  
Easily operate your RV's systems and accessories with this modern LCD touchscreen control panel.



**BLUETOOTH® JENSEN STEREO SYSTEM**  
Jensen bluetooth coach stereo system located in the master bedroom with the ability to listen to your favorite jams through the exterior units speakers will outside the unit.



**AUTO HYDRAULIC LEVELING SYSTEM**  
Save time and avoid hassle by leveling and stabilizing your RV with the push of a button conveniently located on the dash.



**BONDED WINDSHIELD**  
Feel safer with this automotive style curved bonded windshield. This automotive inspired design bonds the windshield along the entire perimeter of the glass. This increases the structural strength and also reduces the risk of stress cracks.



**KING EURO TOP MATTRESS**  
Sleep like royalty in this spacious and luxurious residential style bed.



**EXTERIOR KITCHEN**  
29M and 34J offers extended kitchen and entertaining space with an exterior kitchen including a mini-fridge, microwave, sink and additional storage.



**OUR VERY OWN FLEETWOOD RV MOTORHOME SERVICE CENTERS**

At Fleetwood RV, we strive to deliver peace-of-mind at every turn. Our devotion to customer service starts with our trusted dealer network and spans to our own staff of motorhome service professionals at REV Recreation Group's regional technical centers. The motorhome service centers are strategically located throughout the United States to provide you convenient service wherever the road takes you.

Below, you'll find the closest motorhome service center, as well as a list of the other centers. Please visit [www.fleetwoodrv.com/motorhome-service-centers](http://www.fleetwoodrv.com/motorhome-service-centers) to schedule a Service Appointment.

East Coast  
REV Technical Center  
**800-509-3417**

West Coast  
REV Technical Center  
**877-466-6226**

**ROADSIDE ASSISTANCE. ANYWHERE. ANYTIME.**

24/7 CUSTOMER SUPPORT FOR:

- FUEL
- BATTERY
- LOCKSMITH
- TOWING
- SLIDE-OUT ISSUES
- AND MUCH MORE!

**1-855-268-0414**



One-year of REV Assist is free with the purchase of any new 2020 Fleetwood. You may extend your coverage after the first year at [www.revgroup.com/rev-assist](http://www.revgroup.com/rev-assist).



## FLAIR

CHASSIS	28A	29M	32S	34J	35R
Wheelbase (inches)	228"	228"	208"	228"	228"
GVWR (lbs)	16,000	18,000	22,000	22,000	22,000
Front GVWR (lbs)	6,500	7,000	8,000	8,000	8,000
Rear GAWR (lbs)	11,000	12,000	15,000	15,000	15,000
GCWR (lbs)-360HP	21,000	23,000	26,000	26,000	58,600
Hitch Rating Weight (lbs)	8,000	8,000	8,000	8,000	15,000
Tongue Weight (lbs)	800	800	800	800	1,500
Fuel Capacity (gal)	80	80	80	80	100

DIMENSIONS AND CAPACITIES	28A	29M	32S	34J	35R
Overall Length (inches)	29' 3"	31' 0"	33' 6"	36' 0"	36' 0"
Overall Height (with A/C)	12' 4"	12' 4"	12' 4"	12' 4"	12' 4"
Overall Width (maximum)	100"	100"	100"	100"	100"
Interior Height (maximum)	82"	82"	82"	82"	82"
Interior Width (maximum)	96"	96"	96"	96"	96"
Patio Awning Width (ft./in.)	20'	20'	24'	22'	18'
Interior Storage (cu. ft.)	81	92	97	110	130
Exterior Storage (cu. ft.)	70	45	83	82	160
Fresh Water Holding Tank (gal)	50	50	50	50	50
Grey Water Holding Tank (gal)	37	37	74	37	37
Black Water Holding Tank (gal)	37	37	37	37	37
Appliance Propane Tank (gal) (WC)	14	14	14	14	14
Water Heater Tank (gal)	6	6	6	6	6

Product information, photography and illustrations included in this publication were as accurate as possible at the time of printing.

### FORD® CHASSIS

Model: Ford®

Engine: 6.8L Triton V10

Transmission: Ford® 6-Speed, Automatic w/Overdrive

Alternator: 175 Amp

Torque: 460 lb.-ft. @ 3,000 RPM

Horsepower: 320HP @ 3,900 RPM



#### DISCLAIMERS

1. GVWR (Gross Vehicle Weight Rating) is the maximum permissible weight of this fully loaded motorhome. The GVWR is equal to or greater than the sum of the (UVW) unloaded vehicle weight plus the (OCCC) occupant cargo-carrying capacity.
  2. GAWR (Gross Axle Weight Rating) is the maximum permissible loaded weight a specific axle is designed to carry.
  3. GCWR (Gross Combined Weight Rating) is the value specified by the motor home manufacturer as the maximum allowable loaded weight of this motorhome with its towed vehicle. Towing and braking capacities may be different. Refer to Fleetwood and chassis manufacturer's manuals for complete information.
  4. Length measured from front bumper to rear bumper (excludes accessories).
  5. Excludes safety equipment and awnings.
  6. Motorhomes feature a body width over 96" which will restrict your access to certain roads. Before purchasing, you should research any state and/or province road laws which may affect your usage.
  7. Tank manufacturer's listed water capacity (WC). Actual propane capacity is 80% of water listing as required by the safety code.
- † The chassis manufacturer recommends the installation of a supplemental brake control system to activate the brakes on the vehicle or trailer you are towing. Hitch receiver ratings expressed are maximum for the hitch receiver installed and may require the purchase of additional equipment that is dependent on the weight of the towed load. Consult with hitch receiver manufacturer for further information.
- \* UVW and OCCC are found on the label containing the federal certification tag in each RV.
- \*\* Seatbelts and locations are shown in the brochure for display purposes only. Actual numbers and locations will vary by model.
- \*\*\* All 2020 REV Recreation Group motorhomes include a limited one year/15,000-mile coach warranty and three-year/45,000-mile structural warranty, whichever occurs first, and is fully transferable for the first 12 months.

#### FLEETWOOD MOTORHOME ASSOCIATION

As a Fleetwood RV owner, you're invited to become a member of the Fleetwood Motorhome Association (FMA). Becoming a member is the perfect way to meet other Fleetwood owners who love to travel across America and share in the RV lifestyle. Visit the FMA website at [www.fma4fun.org](http://www.fma4fun.org) to learn more and join the fun.

#### CONTACT US

To locate a dealer near you, visit our website at [www.fleetwoodrv.com](http://www.fleetwoodrv.com) or call 1-800-322-8216. We can also be contacted at Fleetwood RV Customer Relations, P.O. Box 1007, Decatur, IN 46733.

**IMPORTANT—PLEASE READ:** Product information, photography and illustrations included in this publication were as accurate as possible at the time of printing. For further product information and changes, please visit our website at [www.fleetwoodrv.com](http://www.fleetwoodrv.com) or contact your local Fleetwood RV dealer. Prices, materials, design and specifications are subject to change without notice. All weights, fuel, liquid capacities and dimensions are approximate. Fleetwood RV has designed its recreational vehicles to provide a variety of uses for its customers. Each vehicle features optimal seating, sleeping, storage and fluid capacities. The user is responsible for selecting the proper combination of loads (i.e., occupants, equipment, fluids, cargo, etc.) to ensure that the vehicle's capacities are not exceeded.



YOUR LOCAL DEALER



Fleetwood RV is part of REV Recreation Group, a division of REV Group, Inc., a family of 29 industry-leading motor vehicle brands. At REV Group, we innovate, design and build products that connect and protect thousands of people every day—our trusted vehicles are engineered with the utmost rigor and precision to deliver the highest levels of performance, reliability, durability and safety.



IMPORTANT—PLEASE READ: Product information, photography and illustrations included in this publication were as accurate as possible at the time of printing. For further product information and changes, please visit our website at [www.fleetwoodrv.com](http://www.fleetwoodrv.com) or contact your local Fleetwood RV dealer. Prices, materials, design and specifications are subject to change without notice. All weights, fuel, liquid capacities and dimensions are approximate. Fleetwood RV has designed its recreational vehicles to provide a variety of uses for its customers. Each vehicle features optimal seating, sleeping, storage and fluid capacities. The user is responsible for selecting the proper combination of loads (i.e., occupants, equipment, fluids, cargo, etc.) to ensure that the vehicle's capacities are not exceeded.

[www.fleetwoodrv.com](http://www.fleetwoodrv.com)

©2019 REV Group, Inc. Printed in the USA. 10/19. Model Year 2020, First Edition.

Part #: L93-0028