

CLASSIC



FIFTH WHEELS





Also Available in Graphite Decor

3330BH

Featuring Umber Decor

FAMILY FRIENDLY

This bunkhouse floorplan offers something for the whole family. Our 3330BH C-Class edition offers a full rear bunk loft and two full size bathrooms with tub shower. With sleeping for up to twelve, this

unit surprisingly doesn't sacrifice living space for sleeping quarters. This model is equipped with a full pantry, and a beautiful entertainment system that the whole family will love to gather around.



Featuring Umber Decor

3550FL

AT HOME ON THE ROAD

Our 3550FL C-Class edition has the same luxurious layout as our original front living floorplan at a fraction of the cost. Boasting one of the largest front cap windows in the industry, this beautiful coach offers the perfect front view. The entertainment center of the

3550FL model is second to none with a standard pop up 50" flat screen TV and oversized fireplace for all your entertaining needs. The full walk in shower with an overabundance of headroom is something every outdoor enthusiast should not go without.





Also Available in Graphite Decor

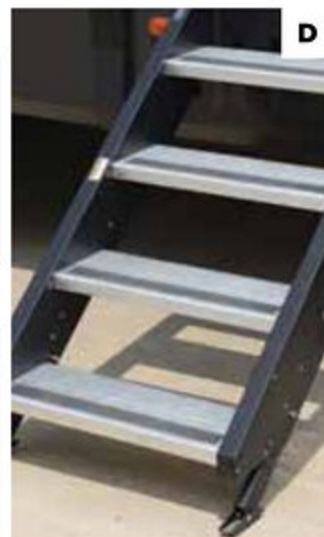


C-CLASS

INTERIOR FEATURES

- A** The Sierra Signature package includes stainless steel appliances
- B** Porcelain foot flush toilet, easy to use, easy to clean
- C** LED accent lighting at toe kick for increased visibility at night
- D** Designer sink faucet with pull-out sprayer and stainless undermount sink
- E** LED HDTV with premium soundbar and DVD player
- F** Mocha accented crown molding gives the Sierra kitchen a truly residential finish
- G** Upgraded master bedroom headboard with integrated LED lighting
- H** Contemporary ceiling fan
- I** Enjoy the warmth and comfort of the electric fireplace
- J** Handcrafted fascia gives the slide-out a distinguished look
- K** Real wood drawers on soft close, full extension, ball bearing drawer guides
- L** Interior handrail to upper deck for added safety

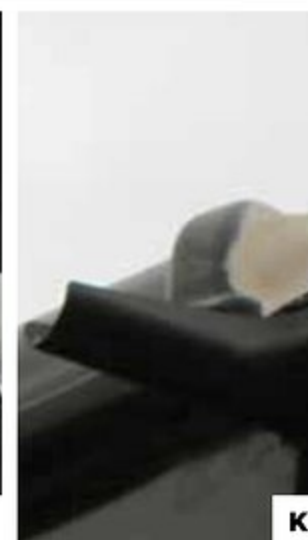




C-CLASS

EXTERIOR FEATURES

- A** Oversized grab handle at main entry door
- B** Newly designed front cap, featuring 3 LED light strips, select models feature a tinted window.
- C** 4 point electric Level-Up front jacks (6 point 3550FL)
- D** MOR/ryde low rise fold in entry steps
- E** Locking LP Bottle storage
- F** 16" Radial tires - E Rated
- G** Command center control panel for operating slides, monitoring tank levels and controlling lighting
- H** Sierra's lighted docking station
- I** 110v outlet and cable outlet conveniently located in the pass-thru storage area
- J** Gel coat fiberglass protects from UV rays and prevents yellowing and cracking prevent black streaking
- K** Drip rail with extra long drip spouts help prevent black streaking black streaking
- L** Underbelly Armour full coach underbelly protection



SIERRA

STANDARDS, PACKAGES, & OPTIONAL FEATURES

C-CLASS

EXTERIOR FEATURES

- 4 point electric level up system (6 point 3550FL)
- Quad MOR/ryde step
- Color match high gloss gel coated colored exterior fiberglass
- Painted two tone aerodynamic fiberglass front cap with improved turning radius
- Underbelly Armor
- Enclosed and heated dump valves
- 16" Spare tire kit
- Large tinted windows with 80/20 UV prohibitor
- "One Touch" Dometic® electric awning w/ LED light strip
- Roof ladder
- Power front jacks with spring loaded snap pins
- 16" Radial tires-E Rated
- Automotive-style fender skirts
- Hitch light
- Porch light with interior switch
- 30 lb. double LP tanks with auto change over
- 2 exterior speakers
- Rain gutters with extra long drip spouts (prevents black streaking)
- Insulated heavy duty slam lock baggage doors
- Exterior foldable grab handle
- Unobstructed pass thru storage area
- Upgraded aluminum rims
- Friction hinge entry door

INTERIOR FEATURES

- Stainless steel appliances
- Rustic wood plank linoleum
- Decorative backsplash
- Two color coordinated interiors (Umber, Graphite)
- Soft close full extension drawer glides
- Stainless steel under mounted kitchen sink
- LED lighting throughout
- Solid surface countertops
- Recessed residential lighting
- Accent lighting over dinette
- Mocha accent crown molding over kitchen cabinets
- Extra large picture windows throughout
- Vented side windows in slideouts
- TV antenna and booster
- Solid wood drawer fronts with birch sides
- Upgraded raised panel cabinet doors with designer rails
- Bedroom slideout fascia
- Pillow top mattress
- Teddy Bear® bunk mats
- 40"/50" flatscreen TV (per floorplan)
- Premium soundbar with built in DVD player
- Designer window treatment accented per decor
- Ceiling fan
- Tri-fold hide-a-bed sofa
- Residential stain resistant carpet
- Quilted bedspread

APPLIANCES & SYSTEMS

- High Performance 15K A/C (second A/C prep)
- 10.7 cu. ft. refrigerator
- Digital thermostat for living room and A/C
- Floor ducted 35,000 BTU furnace
- OTR stainless steel microwave
- Three burner high output range with 22" oven
- Interior monitor panel for holding tanks
- Satellite and cable hookup with RG-6 cable for high quality picture
- Porcelain foot flush toilets
- 10 Gal. DSI water heater
- 65 Amp converter
- Power fan in bathroom(s)

CONSTRUCTION

- Welded aluminum-framed, vacuum bonded laminated superstructure
- 3/8" roof decking (full walk-on roof)
- Cambered powder coated frame with rust prohibitor
- Fully enclosed underbelly
- 5" truss roof rafters
- R-10E sidewall construction
- Laminated sidewalls
- Laminated slideout walls

FOR YOUR SAFETY

- Smoke alarm
- Fire extinguisher
- Breakaway switch (battery hook-up required)
- Dead-bolt lock on entry door
- LP/CO2 gas detector
- Fire escape windows

POPULAR OPTIONS

- Second 15K air conditioner in bedroom (ducted)
- Heated holding tanks (12V)
- Zamp roof mounted solar prep
- Central vacuum
- Slide room awnings (all slides)
- 9 cu. ft. gas/ electric refer

POLAR TECH PACKAGE (Optional)

- Thermal pane windows
- Heated holding tanks
- 40K BTU furnace

PLATINUM PACKAGE (Standard -Limited Time Offer)

- Roller shades throughout
- Premium range w/glass cover
- King wi-fi extender system
- 16" Spare tire kit
- Roof ladder
- Electric leveling system
- High efficiency radiant foil (roof + floor)
- 3 Camera security prep
- Backup camera prep
- MOR/ryde entry step with strut

SIERRA C-CLASS SIGNATURE PACKAGE (Standard)

- Underbelly Armor
- 10.7 cu. ft. 12V Stainless refer
- Stainless appliance package
- Memory foam mattress
- 30" OTR microwave
- Kitchen backsplash
- Soft close residential drawers & cabinet doors
- Docking station
- Color matched gelcoated fiberglass exterior
- 40" Flat screen television (most models)
- Premium soundbar with DVD
- Power fan in bathroom(s)
- Tri fold hide-a-bed sofa
- "One touch" Dometic electric awning w/ LED light strip
- LED interior lighting throughout
- Slam lock baggage doors
- 15K air conditioner w/ prep for second A/C
- Residential kitchen faucet
- Aluminum wheels
- Water filter system
- Shaw linoleum and carpet
- Aerodynamic two tone painted fiberglass front cap
- 10 Gal DSI water heater
- 2 folding dinette chairs (N/A with booths)

Built to Last

SOLID CONSTRUCTION

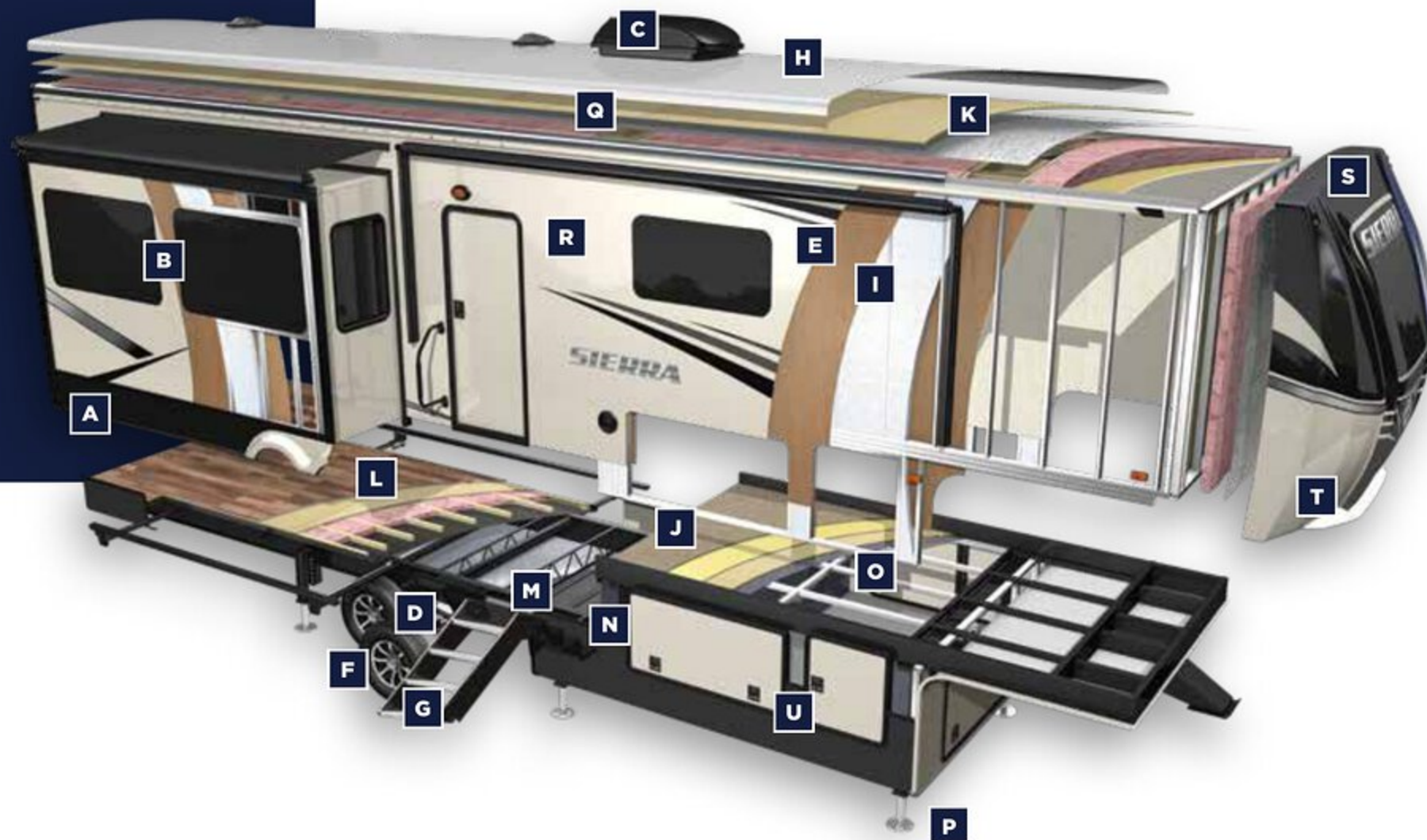
The Sierra C-Class is built to last using only the best materials to ensure that your coach is in it for the long haul.

Careful engineering, well appointed craftsmanship and an uncompromising sense of pride go into every

fifth wheel that we produce. Rest assured that your Sierra is built for luxury living.



- A** Rolled Aluminum Side Skirting
- B** Tinted Safety Glass Windows (80%)
- C** Dual Zone Ducted 15K BTU Air Conditioning
- D** 6,000 Lb. Axles with Auto Adjust Brakes
- E** Laminated Vacuum Bonded Aluminum Sidewalls
- F** 16" E-rated Radial Tires (standard)
- G** MOR/ryde Entry Steps
- H** Color Matched Seamless Rubber Roof (12-yr. Warranty)
- I** 2" Block Foam Insulation
- J** Deluxe Stain Resistant Carpet with Padding
- K** 3/8" Roof decking (Full Walk-on Roof)
- L** 5/8" Tongue and Groove Plywood Flooring
- M** Underbelly Armor full length underbelly protection
- N** I-Beam Powder-Coated Frame with Rust Inhibitor
- O** Aluminum Insulated Bath Deck
- P** 4-Point Electric Level Up System (6-Point 3550FL)
- Q** Sleek Radius Roof
- R** Painted Color Matched High Gloss Gel-Coated Fiberglass Exterior
- S** Two-tone Painted Gel-coated Fiberglass Front Cap (Standard)
- T** Improved Front Cap for Sharper Turning Radius
- U** Insulated Slam Lock Baggage Doors



SIERRA

Something for Everyone

FLOORPLANS

Sierra's mission is to combine luxury and comfort, with ease and options. Offering creative floorplans such as rear living/entertainment, outside kitchen, front living, or bunkhouse, a Sierra is certain to stand out among the rest.

Luxurious features like premium hardwood accents, stainless steel appliances, and patent pending Underbelly Armor give the Sierra a reputation of elegance and outstanding quality.



2990TRIK



3330BH

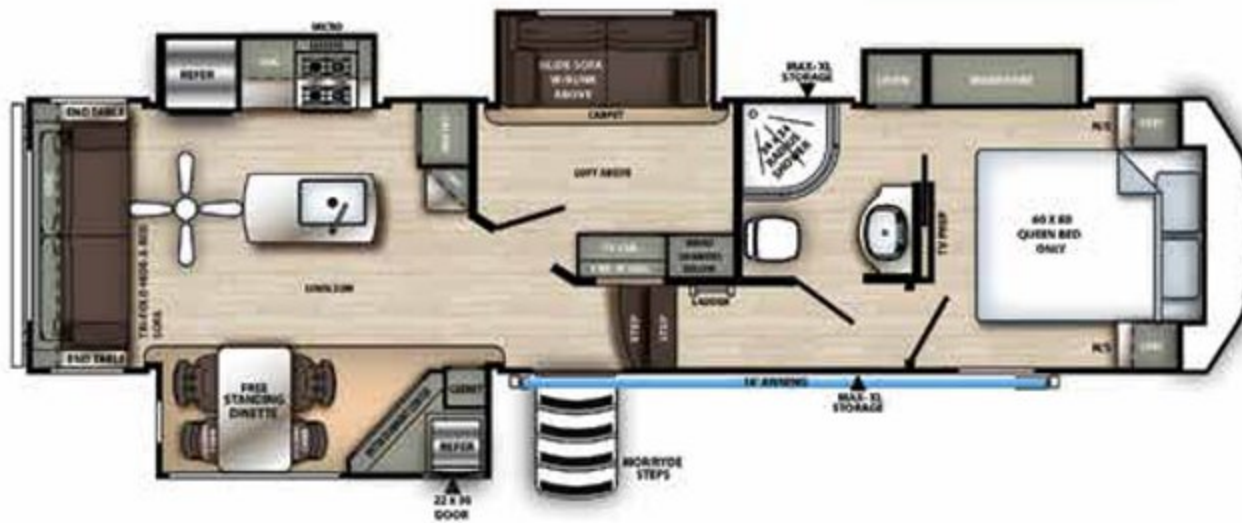


2990TRIK

3220RL

3330BH

3550FL

3220RL

Specifications

Hitch	1,625	1,876	1,920	2,205
UVW	9,729	9,665	10,769	10,684
GVWR	12,729	12,665	13,769	13,684
Cargo	3,000	3,000	3,000	3,000
Length <small>(Bumper to hitch, add 14" for overall length)</small>	32' 10"	35' 0"	36' 11"	39' 3"
Height	13' 4"	13' 4"	13' 4"	13' 4"
Awning	14'	16'	21'	16'
Gray	60	104	134	104
Black	30	104	104	52
*Fresh	50	50	50	50

* Additional 10 Gallons of Fresh Water For Water Heater

3550FL**C-CLASS**



Learn More
Scan this barcode using a QR Reader
on your smart phone to learn more
about Forest River.



A Berkshire Hathaway company.

Forest River, Inc.
55470 C.R. 1, Elkhart, IN 46515
(574) 389-4600
www.forestriverinc.com/Sierra
www.forestriveraccessories.com

YOUR LOCAL SIERRA DEALER

GVWR (Gross Vehicle Weight Rating) - is the maximum permissible weight of the unit when fully loaded. It includes all weights, inclusive of all fluids, cargo, optional equipment and accessories. For safety and product performance do NOT exceed the GVWR.

GAWR (Gross Axle Weight Rating) - is the maximum permissible weight, including cargo, fluids, optional equipment and accessories that can be safely supported by a combination of all axles.

UVW (Unloaded Vehicle Weight)* - is the typical weight of the unit as manufactured at the factory. It includes all weight at the unit's axle(s) and tongue or pin and LP Gas. The UVW does not include cargo, fresh potable water, additional optional equipment or dealer installed accessories.

*Estimated Average based on standard build optional equipment.

CCC (Cargo Carrying Capacity)** - is the amount of weight available for fresh potable water, cargo, additional optional equipment and accessories. CCC is equal to GVWR minus UVW. Available CCC should accommodate fresh potable water (8.3 lbs per gallon). Before filling the fresh water tank, empty the black and gray tanks to provide for more cargo capacity.

** Estimated average based on standard build optional equipment

Each Forest River RV is weighed at the manufacturing facility prior to shipping. A label identifying the unloaded vehicle weight of the actual unit and the cargo carrying capacity is applied to every Forest River RV prior to leaving our facilities.

The load capacity of your unit is designated by weight, not by volume, so you cannot necessarily use all available space when loading your unit.

All information contained in this brochure is believed to be accurate at the time of publication. However, during the model year, it may be necessary to make revisions and Forest River, Inc., reserves the right to make all such changes without notice, including prices, colors, materials, equipment and specifications as well as the addition of new models and the discontinuance of models shown in this brochure. Therefore, please consult with your Forest River dealer and confirm the existence of any materials, design or specifications that are material to your purchase decision.



PRE-DELIVERY INSPECTION FACILITY
20,000 square feet of quality assurance. The bare essentials for a premium product. This state-of-the-art facility gives immediate daily feedback to production for quality assurance in every unit built.

SIERRA

C-CLASS III



www.ForestRiverBuyLocal.com

