

INVICTA

2020 CLASS A GAS



HOLIDAY
RAMBLER

holidayrambler.com





HOLIDAY RAMBLER

Conquer Every Crossroad

Meet the newest model to the Holiday Rambler line-up!

This Class A Gas brings some of Holiday Rambler's most impressive features and innovations, including more exterior storage space for long-term travel. There's also a high-tech cockpit with a fully-featured HD radio that brings built-in apps like Waze, Spotify, and Amazon Music, and a state-of-the-art Apple CarPlay (or Android Auto) system with navigation and eyes-free Siri capabilities. Meanwhile, the included WiFiRanger™ Sky4 and 100-Watt solar panel keeps you connected and powered up. Plus its Alcoa wheels and Bilstein® steering stabilizer system (front) offer smooth, stress-free adventures.

When it comes to the everything-on-board Invicta, full-time exploration is anything but standard.



INVICTA 34MB
CINNAMON GRAPHICS



THE INVICTA CHASSIS

The Invicta chassis puts strength, stability, and reliability front and center. Perfect for trips requiring large carrying capacities, and built to store everything you need with pass-through storage. The Invicta is built on the ideal chassis for optimum balance and control on Holiday Rambler gas motorhomes.

Chassis Warranty provided by Ford®





INVICTA FLOORPLANS

The all-new loaded Invicta features the amenities and styling of a higher-priced Class A Gas. The Invicta is available with two floorplans with well thought-out features and standards.

Three classy, modern decor packages and styling options are available to choose from, and standard features such as a facing booth dinette with dream dinette table and optional theatre seating. A clean stylized feature wall including an electric fireplace and flush inset 39" Smart TV equipped standard with Amazon Fire TV on the 34MB floorplan

There's plenty of room and storage to bring along all your favorite comforts of home. The 34MB floorplan features a versatile pantry storage closet with lazy susan storage. The 33HB floorplan comes standard with an additional storage area above the belt-line for extra cargo. Both floorplans come standard with an exterior 50" LED TV for entertaining around the campfire.

The 33HB has a full lavy area and an additional half lavy. Both floorplans boast generous master bedrooms and wardrobe areas and Hide-a-Loft™ drop down queen bed with 600-pound capacity.

Check out the award-winning all-new Holiday Rambler Invicta.



OPTIONS

089 UPGRADED WIFI PACKAGE
 096 KING STATIONARY SATELLITE SYSTEM
 105 DOMETIC REFRIGERATOR - LP, 8CF
 126 WASHER/DRYER-ALL IN ONE COMBO
 131 WASHER/DRYER-STACKABLE
 173 CELLULAR BOOSTER
 194 THEATRE SEATING SOFA
 230 ROOF VENT RAIN COVERS

304 SOLAR ELECTRICAL PANEL
 435 CSA-PKG FORD®
 447 CSA FORD® INSTRUMENT PANEL
 485 BLIND SPOT DETECTION
 580 COLLISION MITIGATION
 605 DUAL GLAZED WINDOWS
 953 POWER DRIVER SEAT



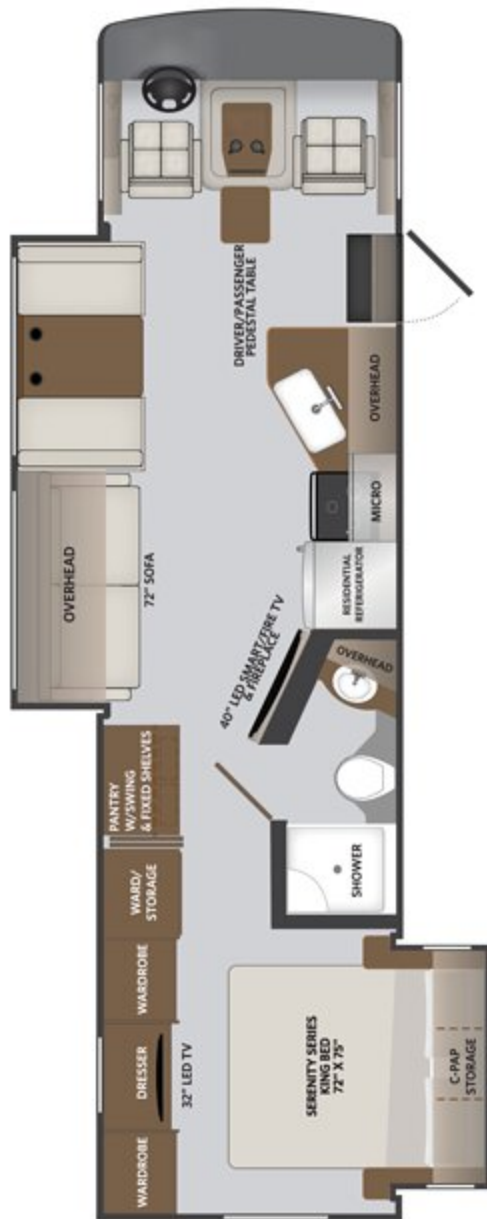
OPT 126
WASHER & DRYER
COMBO



OPT 194
THEATRE SEATING

OPTIONS:
 089, 096, 105, 126, 131, 173,
 194, 230, 304, 435, 447,
 485, 580, 605, 953

At Holiday Rambler, it's not just what you see that matters.
It's what you don't.



OPTIONS:
089, 096, 105, 126, 131, 173,
194, 230, 340, 435, 447,
485, 50, 605, 953



At Holiday Rambler, we don't settle for anything less than the best and neither should you. That is why every Holiday Rambler features industry-leading materials and construction standards.

- 1 PowerLock System™ Interlocking Walls and Ceiling**
Holiday Rambler's interlocking aluminum extrusion wall-joint system integrates sidewall and roof assembly into one locked-together overall structure for long-term performance and durability.
- 2 Precision Welded Joints**
The all aluminum hull structure is engineered and built to precise tolerances and then precision welded to ensure strength and durability on eventhe roughest road trip.
- 3 Tuff-Coat Fiberglass Walls**
Thicker than other manufacturers, our Tuff-Coat fiberglass walls provide a durable skin and is the perfect surface for an automotive style finish.

- 4 Thick Robust Floor**
Thicker than the industry standard, Holiday Rambler engineered the 1" thick floor for more sound deadening and more insulation which results in a quieter, more comfortable ride no matter the weather or terrain outside.
- 5 Solid Bead-Foam Insulation™**
Fleetwood's above-standard insulation material and process doesn't allow settling or air gaps to form. There is no forcing the precision cut insulation into position like the roll-type pink fiberglass insulation used by other manufacturers.

- 6 Loctite® Industrial Adhesive**
Engineered to meet bonding, sealing and assembly requirements for a durable structure with no de-lamination.
- 7 No Wood Substrate**
Unlike most Class A motorhome manufacturers, you won't find any wood substrate on the exterior walls.

- 8 1/2" Plywood Subfloor**
Thicker than most competitors who use OSB or chip board, the integrated 1/2" subfloor provides a solid surface for flooring and eliminates movement and flexing while traveling.

- 9 Vacu-Bond™ Construction**
Fully sealed and weather-resistant, the vacuum-bonded assemblies combine materials and construction for a straight, solid integrated wall that is better suited to withstand the rigors of the road. An adhesive bonding process applies up to 415,000 pounds of vacuum pressure to the welded-aluminum sidewall frame, bead-foam insulation, thick Tuff-Coat fiberglass skin and inner wall materials, far exceeding industry standards.

- 10 CNC Precision Routed Walls and Floors**
Computer driven routers precisely route walls and floors to fit exact specifications to eliminate gaps, misalignments and provide for a more solid integrated overall structure.

Each of these advantages have been engineered to deliver superior reliability, durability and most of all, customer satisfaction.



INVICTA

2020 CLASS A GAS



INVICTA 34MB
BISCOTTI DÉCOR WITH
AMBER CABINETRY



INVICTA 34MB
BISCOTTI DÉCOR WITH
AMBER CABINETRY





2020 CLASS A GAS

INVICTA

INVICTA STANDARDS | OPTIONS

EXTERIOR	33HB	34MB
Aerodynamic Fiberglass Cap w/Hood and Automotive Headlighting	S	S
Rear Fiberglass Cap w/Automotive Lighting	S	S
ABS Wheel Well Trims	S	S
TPO Roof - Thermoplastic Polyolefin	S	S
Legged Electric Patio Awning w/LED Lighting	S	S
Radiused Entry Door w/Screendoor, Strut, Latch, Deadbolt Lock	S	S
Slide Out Awning Toppers Above All Slideouts	S	S
Slam Latch Luggage Door Handles - Black	S	S
Entry Grab Handle	S	S
Power Entry Step w/Light	S	S
Bottom/Side Swing Radiused, Color Matched Fiberglass Luggage Doors	S	S
Single Pane Frameless Windows	S	S
Dual Pane Frameless Windows	O	O
Patio LED Light	S	S
Front, Side and Rear Clearance and Marker Lighting	S	S
Gravity Fresh Water Fill	S	S
Enclosed Exterior Waste Station w/Discharge Valves	S	S
Trailer Hitch w/7-Way Round Tow Connection (8,000 lbs.)	S	S
TV Antenna - Unidirectional King Controls Jack Antenna	S	S
LP Connection	S	S
Four Point Fully Automatic Hydraulic Leveling Jacks	S	S
Rear Ladder	S	S
Partial Paint w/Vinyl Graphics	S	S
Roof Vent Rain Covers	O	O
Roof Mount Satellite Dish Prep	S	S
KING Universal Satellite System	O	O
CAB EXTERIOR	33HB	34MB
Automotive One Piece Windshield	S	S
Daytime Running Lights	S	S
Driver/Passenger Slider Windows	S	S
Fog Lamps	S	S
Automotive Style Windshield Wiper System	S	S
Remote Power/Heated Mirrors w/Turn Signals and Side Cameras - Chrome/Black	S	S
Blindspot Detection	O	O

CAB INTERIOR	33HB	34MB
Driver Chair w/Reclining Back, Swivel and Manual Controls	S	S
Driver Chair w/Reclining Back, Swivel and 6-way Power Controls	O	O
Driver/Passenger ABS Style Armrests	S	S
Passenger Chair w/Reclining Back, Swivel and Manual Controls	S	S
Cupholders - Driver/Passenger	S	S
Power Windshield Roller Shade	S	S
Window Manual Roller Shades - Driver/Passenger	S	S
Overhead Map Lighting - Driver/Passenger	S	S
Black Instrument Gauges w/Electronic Information Center	S	S
High Output Dash Air Conditioning and Heat	S	S
Electronic Cruise Control	S	S
Windshield Wipers w/Delay	S	S
Remote Switch for Power/Heated Mirrors	S	S
Steering Wheel w/Tilt Column	S	S
6" Color Monitor for Side and Rear Cameras	S	S
10" Alpine® Stereo w/AM/FM/Bluetooth®/ MP3/USB - Phone Control - Android Auto & Apple CarPlay w/ Navigation - Siri Eyes Free - Built in HD Radio - Apps (Waze, Spotify, Amazon Music) - Sirius/XM Ready (Requires Subscription) - Backup Camera	S	S
USB and Auxiliary Inputs	S	S
Seat Belts - 3 Point Driver & Passenger w/Adjustable Straps	S	S
12V Accessory Ports	S	S
110-Volt AC Outlets	S	S
Automotive Style Dash w/Dual Monitors and Workstation	S	S
Generator On/Off Switch	S	S
Colored Fiberglass Engine Cover w/Snack Tray	S	S
Auto Leveling Jack Controls	S	S
Driver/Passenger Center Table	S	S
Auxillary Start Switch	S	S
Hide-A-Loft™ Drop Down Queen Bed	S	S
INTERIOR	33HB	34MB
Sofa - Jack-knife	S	S
Sofa - Theatre Seating	O	O
Facing Booth Dinette w/Dream Dinette Table and Single Door Storage	S	S
Solid Surface Galley Top w/Sink Covers	S	S
Surf-X Tops Throughout (Excluding Galley)	S	S

Electric Fireplace	—	S
Feature Wall w/Accent Wall Covering	S	S
Feature Wall w/Surf-X Covering	—	S
Flat Ceiling w/Soft Touch Vinyl	S	S
Vinyl Tile Flooring Throughout	S	S
Non-Ozite Lined Cabinet Interiors w/Adjustable Shelving	S	S
Full Extension Drawer Guides w/Latches	S	S
Hidden Euro Hinges and Struts	S	S
Cabinet Doors - Solid Wood, Raised Panel	S	S
Galley Overhead Glass Inserts	S	S
Slideout Fascia - Hardwood Interior Wood Color Coordinating	S	S
Valances w/Lambrequins	S	S
Manual Night Roller Shades	S	S
Energy Efficient 3" LED Flush Mount Ceiling and Under Cabinet Reading Lights Throughout	S	S
Chrome Faucets/Fixtures/Hardware	S	S
INTERIOR ENTRY	33HB	34MB
Battery Disconnect	S	S
Interior Entry Grab Handle - Metal	S	S
Solid Surface Entry Steps	S	S
KITCHEN	33HB	34MB
Refrigerator - Residential Stainless Steel - Insignia	S	S
Refrigerator - LP 8 cu.ft. - Dometic	O	O
Cooktop - 3-Burner	S	S
Stainless Steel Over the Range Convection Microwave	S	S
Tile Backsplash	S	S
Sink - Stainless Steel Farmhouse-Style	S	S
Residential Single Handle Faucet w/Pullout Sprayer	S	S
Adjustable Shelves Throughout	S	S
Power Ceiling Vent	S	S
BEDROOM	33HB	34MB
King Bed	S	S
Designer Bedspread, Headboard, Pillow Shams & Pillows	S	S
C-PAP Machine Prep in Bedroom Overhead	S	S
120V/USB Ports	S	S
Reading Lights	S	S

LAVY	33HB	34MB
Sink - Top-Mounted Stainless Steel	S	S
Residential Faucet - Single Handle	S	S
Medicine Cabinet w/Mirror	S	S
ABS Shower Surround	S	S
Glass Shower Door	S	S
Shower Skylight	S	S
Metal Shower Head w/Sliding Adjustable Bar, Soap Dish and Matching Single Valve Faucet	S	S
Standard Toilet - Porcelain	S	S
Macerator Toilet - Porcelain	S	—
Power Ceiling Vent	S	S
ENTERTAINMENT	33HB	34MB
32" Flat Screen LED TV (Bedroom)	S	S
39" Flat Screen Smart/Fire TV LED TV (Living Area)	S	S
Living Area Ceiling Speakers	S	S
Bluetooth® Coach System in Bedroom w/Exterior Speakers	S	S
Exterior Entertainment Center w/50" LED TV	S	S
ELECTRIC & UTILITIES	33HB	34MB
A/C - Dual 13,500 BTU	S	S
Furnace - 30,000 BTU	S	—
Furnace - 34,000 BTU	—	S
50 Amp Service	S	S
55 Amp Power Converter	S	S
Inverter - Single 2000w	S	S
WiFi Ranger™ Sky4	S	S
WiFi Ranger™ SkyPro Pack	O	O
Solar Panel - 100w	S	S
Multiplex Wiring Control System w/4.3" Touchscreen Panel	S	S
6V Aux Batteries (4)	S	S
Generator - 5.5kW Onan Quiet	S	S
Auto Gen Start	S	S
Master Battery Disconnect Switch	S	S
Water Pump - 12V 3GPM High Capacity Shurflo Water Pump	S	S
Water Purification System	S	S
Water Heater Bypass System	S	S
City Water Hookup	S	S
Exterior Shower	S	S

Cable TV/Satellite Hookup	S	S
Black Holding Tank Flush System - San-T-Flush	S	S
Single Location Monitor Panel w/LPG, Touch Sensor Tank Monitoring/Battery Readouts	S	S
Fire Extinguisher, LP/CO and Smoke Detectors	S	S
GFCI Receptacle in Exterior Storage	S	S
Washer/Dryer Prep - Combo	S	S
Washer/Dryer - Combo	O	O
Washer/Dryer - Stackable	O	O

**CSA standards may require substitution or deletion to achieve conformance

Visit our website for more photos
and to build your 2020 Invicta at
holiday Rambler.com.

DEEP ADDITIONAL STORAGE AND CLOSET SPACE

This innovative feature functions like a lazy susan with the additional pantry item shelf storage and with a simple turn of the door to reveal behind a large shelving stow area. Available on the 34MB floorplan only.



INVICTA TECHNOLOGY & SAFETY – STANDARDS & OPTIONS

WiFiRanger™ Sky4 DC	S
WiFiRanger™ Sky4 ProPack w/LTE (Cellular Internet Modem) Includes Cell Booster and GPS Upgrade	O
10" Alpine Stereo w/AM/FM/Bluetooth/MP3/USB - Phone Control - Android Auto & Apple CarPlay w/ Navigation - Siri Eyes Free - Built in HD Radio - Apps (Waze, Spotify, Amazon Music) - Sirius/XM Ready (Requires Subscription) - Backup Camera -	S
Solar Panel 100w	S
Solar Panel 265w	O
Velvac® Blind Spot Detection in Mirror	O

DIMENSIONS & CAPACITIES

MODEL	33HB	34MB
Overall Length (inches) ⁴	35' 3"	35' 9"
Overall Height (inches with A/C) ^{5,6}	12' 10"	12' 10"
Overall Width (inches maximum) ^{5,6}	100"	100"
Interior Height (inches maximum)	82"	82"
Interior Width (inches maximum)	96"	96"
Patio Awning Width (feet)	14'	20'
Interior Storage (cu. ft.)	152	128
Exterior Storage (cu. ft.)	145	134
Fresh Water Holding Tank (gal)	100	100
Grey Water Holding Tank (gal)	50	50
Black Water Holding Tank (gal)	50	50
Appliance Propane Tank (gal) (WC)	25	25
Water Heater Tank (gal)	10	10

CHASSIS

MODEL	33HB	34MB
Wheelbase (inches)	228"	242"
Front GAWR (lbs) ²	8,000	8,000
Rear GAWR (lbs) ²	15,000	15,000
GCWR (lbs) ²	26,000	26,000
GVWR (lbs)	22,000	22,000
Hitch Rating Weight (lbs)	8,000	8,000
Tongue Weight (lbs)	800	800
Fuel Capacity (gal)	80	80

FORD® CHASSIS

Model: Ford®
 Engine: 6.8L Triton V10
 Transmission: Ford® 6-Speed, Automatic w/Overdrive
 Alternator: 175 AMP
 Torque: 460 lb.-ft. @ 3,000 RPM
 Horsepower: 320 HP @ 3,900 RPM



EXTERIOR CHOICES - Partial Paint with Vinyl Graphics STANDARD



CINNAMON



SAPPHIRE

Visit our website for more photos and to build your 2020 Invicta at holidayrambler.com.



BLIND SPOT DETECTION (OPTIONAL)
 Ensure smart, safe driving with Velvac® blind-spot upgraded mirrors for your Invicta. A safety feature, where a light will illuminate on the side mirror if an object is in the blind spot ensuring safe travels. Invicta comes standard with remote power, heated mirrors with turn signals and side cameras.



BILSTEIN® STEERING STABILIZER SYSTEM (STANDARD)
 Every Invicta is standard equipped with this shock absorber system that dampens the bumps and vibrations of the road in the steering system. Bilstein allows for easier control to the front-end steering.



ALCOA® WHEELS (STANDARD)
 Every Invicta is standard equipped with Alcoa wheels. Alcoa wheels are designed for increased load requirements. Not only do these wheels look good but they are made to last for the long haul with less maintenance.

DÉCOR

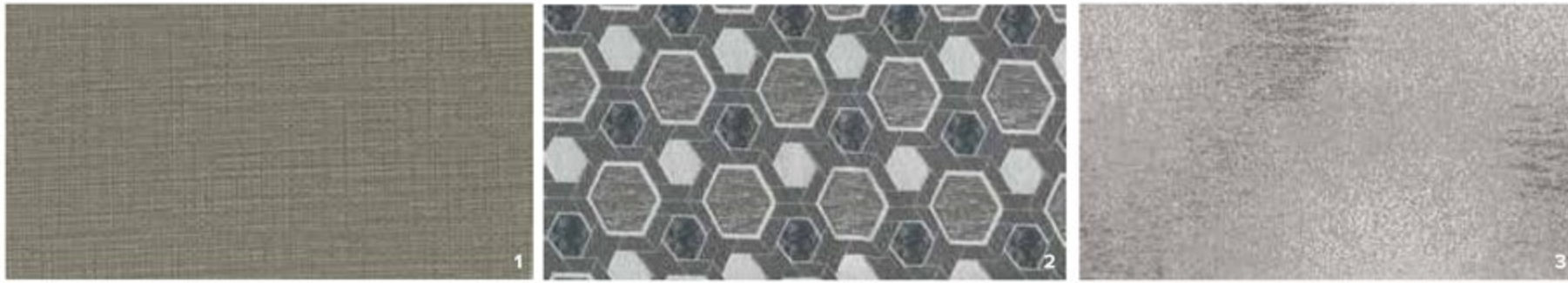
BISCOTTI



CARBON



SLATE



1-SOFA 2-LIVING ACCENT 3-BEDSPREAD 4-COUNTERTOP 5-FLOORING 6-CARPET

CABINETS

AMBER



NUTMEG



WHISPERING WIND



INTERIOR DESIGNER CHOICES:
 Holiday Rambler interior designer recommends:

Carbon Décor coordinates with Whispering Wind or Amber cabinetry

Biscotti Décor with Nutmeg cabinetry is a nice match

Slate Décor pairs well with Whispering Wind cabinetry

INVICTA TOP FEATURES



RENEWABLE SAFE POWER

Each Invicta comes standard with a 100w solar panel.

WIFI RANGER™ SKY4 DC (STANDARD)

Boost a weak signal to get online in no time with this private secure WiFi booster.

WIFI RANGER™ SKY4 PROPACK w/LTE (UPGRADE)

Upgrade to this cellular internet modem that includes a cell booster and GPS upgrade.



BONDED WINDSHIELD

Feel safer with this automotive style curved bonded windshield. This automotive inspired design bonds the windshield along the entire perimeter of the glass. This increases the structural strength and also reduces the risk of stress cracks.



TUFF PLY ENGINEERED VINYL ROOF

Protect yourself from the elements with this state-of-the-art one-piece roof. Constructed out of "Tuff-Ply" or Thermoplastic Poly Olefin is as tough as it comes and is very low maintenance.



EXTERIOR ENTERTAINMENT CENTER (STANDARD)

Every Invicta is standard equipped with an exterior entertainment center with 50" LED TV for additional entertaining space for all the outdoor lovers.



EXTERIOR STORAGE (STANDARD 33HB ONLY)

Additional above the belt line storage is standard on the 33HB floorplan only.

DISCLAIMER

1. GVWR (Gross Vehicle Weight Rating) is the maximum permissible weight of this fully loaded motorhome. The GVWR is equal to or greater than the sum of the (UVW) unloaded vehicle weight plus the (OCCC) occupant cargo-carrying capacity*.
 2. GAWR (Gross Axle Weight Rating) is the maximum permissible loaded weight a specific axle is designed to carry.
 3. GCWR (Gross Combined Weight Rating) is the value specified by the motorhome manufacturer as the maximum allowable loaded weight of this motorhome with its towed vehicle. Towing and braking capacities may be different. Refer to Holiday Rambler and chassis manufacturer's manuals for complete information.
 4. Length measured from front bumper to rear bumper (excludes accessories).
 5. Excludes safety equipment and awnings.
 6. Motorhomes feature a body width over 96" which will restrict your access to certain roads. Before purchasing, you should research any state and/or province road laws which may affect your usage.
 7. Tank manufacturer's listed water capacity (WC). Actual propane capacity is 80% of water listing as required by the safety code.
- † The chassis manufacturer recommends the installation of a supplemental brake control system to activate the brakes on the vehicle or trailer you are towing. Hitch receiver ratings expressed are maximum for the hitch receiver installed and may require the purchase of additional equipment that is dependent on the weight of the towed load. Consult with hitch receiver manufacturer for further information.
- * UVW and OCCC are found on the label containing the federal certification tag in each RV.
- ** The Minimum Towable Load of this vehicle is the available weight capacity, up to GCWR, when the coach is fully loaded to maximum GVWR. However, if the coach is loaded to something less than maximum GVWR, that extra available weight capacity can be added to your Towable Load. For example, if your coach is loaded to 1000lbs less than maximum GVWR, your Towable Load increases accordingly. Do not exceed the hitch rating weight, GVWR or GCWR.
- ** Seatbelts and locations are shown in the brochure for display purposes only. Actual numbers and locations will vary by model.
- *** All 2020 REV Recreation Group motorhomes include a limited one-year/15,000-mile coach warranty and three-year/45,000-mile structural warranty, whichever occurs first, and is fully transferable for the first 12 months.



DESIGNER KITCHEN ELEMENTS

Meal prep with ease and in style with solid surface countertops with glass range cover provides additional countertop work space and a residential refrigerator. Upgrade to a Dometic 8cf double door refrigerator for longer trips.



WASHER/DRYER OPTIONS (UPGRADE)

All the amenities of home-sweet-home with washer and dryer options available. Choose from an all-in one combo unit or a stackable unit.



AUTO GENERATOR START

Batteries need charging? A/C needs to kick on? This feature will automatically turn on your generator to give them some juice and then turn off when they have enough charge.



KING EURO TOP MATTRESS

Sleep like royalty in this spacious 76" x 72" luxurious residential style bed with a king euro top mattress.



HIDE-A-LOFT™ DROP DOWN QUEEN BED (STANDARD)

Standard in every Invicta is a Hide-A-Loft drop down queen sized bed including mattress. The additional sleep quarters has 600lb capacity and industry leading headroom.



AUTO HYDRAULIC LEVELING SYSTEM (STANDARD)

Save time and avoid hassle by leveling and stabilizing your RV with the push of a button.

OUR VERY OWN HOLIDAY RAMBLER MOTORHOME SERVICE CENTERS

At Holiday Rambler, we strive to deliver peace-of-mind at every turn. Our devotion to customer service starts with our trusted dealer network and spans to our own staff of motorhome service professionals at REV Recreation Group's regional technical centers. The motorhome service centers are strategically located throughout the United States to provide you convenient service wherever the road takes you.

Below, you'll find the closest motorhome service center, as well as a list of the other centers. Please visit www.holidayrambler.com/motorhome-service-centers to schedule a Service Appointment.



East Coast REV Technical Center
800-509-3417

West Coast REV Technical Center
877-466-6226

RV OWNERCARE

Limited one-year/15,000-mile coach warranty and three-year/45,000-mile structural warranty, whichever occurs first, and it is fully transferable for the first 12 months. RV OWNERCARE is one of the RV industry's most comprehensive programs and includes systems, appliances, components and construction, with no deductible and no service charge.

Chassis Warranty provided by Ford®

YOUR LOCAL DEALER



Holiday Rambler is part of REV Recreation Group, a division of REV Group, Inc., a family of 29 industry-leading motor vehicle brands. At REV Group, we innovate, design and build products that connect and protect thousands of people every day—our trusted vehicles are engineered with the utmost rigor and precision to deliver the highest levels of performance, reliability, durability and safety.

holidayrambler.com
revgroup.com

CONTACT US

To locate a dealer near you, visit our website at www.holidayrambler.com or call 1-877-252-4666. We can also be contacted at Holiday Rambler Customer Relations, P.O. Box 1007, Decatur, IN 46733.

IMPORTANT—PLEASE READ: Product information, photography and illustrations included in this publication were as accurate as possible at the time of printing. For further product information and changes, please visit our website at www.holidayrambler.com or contact your local Holiday Rambler dealer. Prices, materials, design and specifications are subject to change without notice. All weights, fuel, liquid capacities and dimensions are approximate. Holiday Rambler has designed its recreational vehicles to provide a variety of uses for customers. Each vehicle features optimal seating, sleeping, storage and fluid capacities. The user is responsible for selecting the proper combination of loads (i.e., occupants, equipment, fluids, cargo, etc.) to ensure that the vehicle's capacities are not exceeded.