

2020

ALLEGRO RED 340

CLASS A



TIFFIN



33 AL with G1 Barcelona Exterior



Clockwise from top: Cockpit; Passenger Side Dinette; Dashboard; Master Bed. All interiors shown are Natural Alder cabinets, Sand Bar II décor.

2020 ALLEGRO RED 340

POWERFULLY STYLISH

The 2020 Allegro RED 340® is in a class all its own. Powerful, stylish, and affordable, the RED 340 is the definition of feeling comfortably at home, on the road. Its strong, 340 horsepower Rear Engine Diesel makes it a pleasure to drive with each and every easy press of the accelerator, and its luxurious interior and inviting features will be sure to impress for years to come.



Main Living Area

Surrounded in luxury, its Endurance furniture begs to be lounged in. Its sleek solid wood cabinetry has plenty of storage space, and the energy-efficient LED lighting makes the space feel extra comfortable. The floor plan is measured at a spacious 35', and three slides provide plenty of space.

Left to right: Dinette; Living Area. All interiors shown are with Natural Alder cabinets, Sand Bar II décor.



The cool brightness of LED lighting illuminates interiors, using a fraction of the energy of incandescent bulbs to preserve the coach's battery life.



Top to bottom: Living Area; Sofa with optional Fireplace; Sofa bed expanded.



Master Suite

The Allegro RED 340 offers the comforts that come with a luxury foam king-size mattress and a spacious, one-piece molded fiberglass shower that makes catching a little shut-eye, and cleaning up after a long day of play both easy and relaxing. Plus, the handcrafted built-in cabinets are roomy enough to hold all the personal items you would ever need for life on the road.

Left to right: Bedroom Storage; King bed. All interiors shown are with Natural Alder cabinets, Sand Bar II décor.





Tiffin-crafted solid wood cabinets, drawers, and closets add more storage than many larger-sized models.



Clockwise from top: Master Bathroom vanity; Optional Stacked Washer and Dryer; Shower.

Kitchen

Beautiful. Functional. Tastefully designed. The kitchen of the Allegro RED 340 features impressive, elegant solid surface galley countertops, a 3-burner cooktop with a convection microwave, and residential refrigerator comes standard. Combine that with plenty of storage, a handy pull-out pantry, and stylish backsplash and you've got a kitchen space that's perfect for cooking breakfast, lunch, and dinner.

Left to right: Passenger Side Dinette Kitchen. All interiors shown are with Natural Alder cabinets, Sand Bar II décor.





Top to bottom: Sink; 3-burner cooktop.



Reflecting over four decades of innovation, Tiffin's exclusive, custom-built PowerGlide Chassis demonstrates our ongoing commitment to delivering a motorhome experience that's precisely engineered for durability, reliability, performance, and control wherever your journey takes you.

MULTIPLEX WIRING WITH DIAGNOSTICS

The PowerGlide's multiplexed electrical system, with auto-reset fuses and relays, uses less wiring and increases reliability, efficiency, and flexibility.

DYNAMOMETER TESTING

Our dynamometer testing simulates full power road testing, enabling us to better assess engine performance, cooling system function, and instrumentation.

POWERGLIDE CHASSIS WARRANTY

The PowerGlide carries a Tiffin-backed limited warranty for three years or 50,000 miles against defects in materials and workmanship.

HUCK-BOLTED CONSTRUCTION

Huck Bolts are precision engineered two-piece fasteners. Huck Bolts are vibration resistant and provide direct metal to metal contact when installed.

For all information concerning the PowerGlide limited warranty provided by Tiffin, please refer to the full, written limited warranty set forth on the Tiffin website or held by our authorized dealerships. For a complete and up-to-date list of available options and specifications, visit tiffinmotorhomes.com.

Premium Paint System

Our eight-step full-body paint system features premium grade paints sealed with three layers of clear coat with ultraviolet protection. An additional layer of scratch-resistant plastic coating protects the front of the coach, stairwell, and entry door lock.



G1 AUTUMN



G1 GLACIER BLUE



G1 BARCELONA



G1 SLATE GRAY

Interior Décor

Make your experience on the road all your own. Express yourself by choosing the interior appointments such as cabinet finishes, flooring, and décor ensembles for every part of your motorhome. In the 2020 Allegro RED 340, you'll be able to go in style no matter where you go.

CABINETS



MOCHA (S)



NATURAL ALDER (O)

FLOOR TILE



SAND CASTLE (S)



SEA OAT (O)

ENDURANCE



BELGIAN



WHITE MAPLE

Because of progressive improvements and specifications, standard and optional equipment are subject to change without notice or obligation. For a complete and up-to-date list of available options and specifications, visit tiffinmotorhomes.com.

CASHMERE II



WINDOW TREATMENT



COUNTERTOP



LIVING ROOM



MASTER SUITE

SAND BAR II



WINDOW TREATMENT



COUNTERTOP



LIVING ROOM



MASTER SUITE

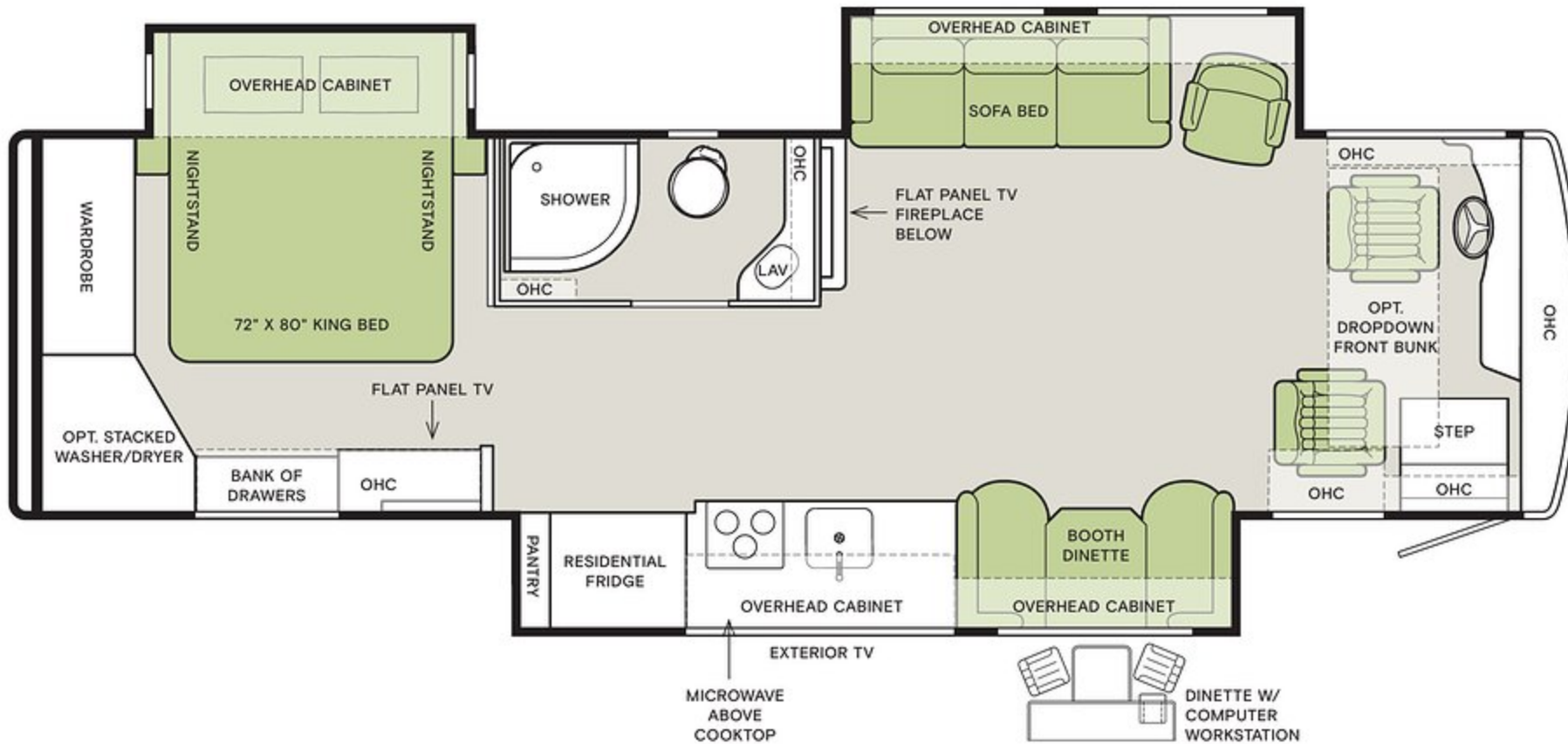
Floor Plan



The design of every Allegro RED 340 floor plan must meet four essential criteria: Maximum space, Optimal organization, Relaxation plus, and Elegant atmosphere. Tiffin's MORE Plans offer your family the most comfortable layout for life on the road.

If optional furniture combinations are selected, window locations may vary from diagram shown. All options may not be available in every model. Because of progressive improvements and specifications, standard and optional equipment are subject to change without notice or obligation. For a complete and up-to-date list of available options and specifications, visit tiffinmotorhomes.com.

33 AL



Specifications

POWERGLIDE® REAR ENGINE DIESEL CHASSIS

- Cummins ISB 6.7-liter Electronic Diesel, Turbocharged, Aftercooled Engine
- Allison 2500 MH 6-speed Automatic Transmission with Lock-up
- Peak HP 340 HP @ 2,600 RPM
- Peak Torque (lb - Ft. Max Net) 700 @ 1,600 RPM on 340 HP Engine
- GAWR Front: 10,000 lb
- GAWR Rear: 18,000 lb
- GVWR: 28,000 lb
- GCWR: 35,500 lb
- Wheel Base: 198"
- Tire Size: 255/80R22.5
- Fuel Tank (gal.): 90
- DEF Tank ¹ (gal.): 10
- Alternator Amps: 130
- Straight Rail Chassis Frame
- Air Ride Suspension
- Full Air Brakes
- Exhaust Brake
- Four Aluminum Wheels
- Air Horns
- Air Leveling

WEIGHTS & MEASUREMENTS

- Overall Length (approximately) ²: 35' 2"
- Overall Height with Roof Air (maximum): 12' 8"
- Interior Height: 7'
- Overall Width ²: 101"
- Interior Width: 96"
- Fresh Water (gal.): 70
- Black Water (gal.): 50
- Grey Water (gal.): 65
- LPG Tank (gal.; can only be filled to 80% capacity)
- Basement Storage (cubic ft - app.): 71
- Minimum Garage Height: 14'
- Hitch Rating ³: 7,500 lb

COCKPIT

- Tilt and Telescoping Steering Wheel
- Cruise Control
- Lighted Instrument Panel
- CD Player and AM/FM Stereo
- Power Solar and Privacy Windshield Shades
- Fire Extinguisher
- Ceiling Mounted Speakers
- In-dash Navigation System
- Manual Solar and Privacy Shades on Side Windows
- Endurance Power Driver and Passenger Seats
- Power Suspended Adjusted Fuel and Brake Pedals

COCKPIT OPTIONS

- Overhead Front Bunk

KITCHEN

- Large Single Kitchen Sink with Single Lever Satin Nickel Faucet
- Solid Surface Galley Countertop
- Residential Refrigerator
- 3-burner Cooktop with Convection Microwave

KITCHEN OPTIONS

- Oven with Convection Microwave

LIVING AREA

- Booth Dinette/Sleeper on Passenger Side
- Sleeper Air Coil and One Recliner on Driver Side

LIVING AREA OPTIONS

- Dinette with Computer Work Station on Passenger Side

EXTERIOR

- Fiberglass Front and Rear Caps
- Tinted One-piece Windshield
- 8.0 kw Onan® Generator
- Horizontal Mounted Wipers
- Heated Power Mirrors
- Exterior Patio Light
- Power Patio Awning
- Awning(s) over Slide-outs
- Double Electric Step
- Front Cap Protective Film
- 50 Amp Service
- Convenient Access Doors with Gas Shocks
- Single Handle Lockable Storage Door Latches
- Heated Holding Tank Compartment
- Four 6 V House Batteries
- Color Back-up Monitor
- Full-body Paint
- Two Low Profile Roof ACs with Heat Pumps (15 K BTUs)
- Exterior TV in Galley Slide
- Prep for Solar Panel
- Prep for Satellite

EXTERIOR OPTIONS

- Prep for Wi-Fi Ranger
- Wi-Fi Ranger

BEDROOM

- Flat Panel TV
- Memory Foam King Mattress (72" x 80")
- Solar/Privacy Shades

BEDROOM OPTIONS

- Stacked Washer/Dryer

BATHROOM

- Medicine Cabinet
- Molded One-piece Fiberglass Shower
- Roof Vent Fan

INTERIOR

- Soft Touch Vinyl Ceiling
- Flat Panel TV in Entertainment Center with Soundbar
- Treated Carpet and Fabrics
- Ball Bearing Drawer Slides
- Solar and Privacy Shades
- Power Roof Vents
- Tank Level Monitor System
- Smoke Detector
- Truma® Gas Continuous Water Heater
- 2000 Watt Sine Wave Inverter
- Carbon Monoxide Detector
- LED Lighting
- LPG Leak Detector
- DVD Player

INTERIOR OPTIONS

- Central Vacuum System
- Fireplace

INTERIOR DÉCOR

CABINETS

- Mocha
- Natural Alder

ENDURANCE

- Belgian
- White Maple

SUITES

- Cashmere II
- Sand Bar II

¹ Diesel Exhaust Fluid (DEF) is the active component used in Selective Catalytic Reduction (SCR) engines to reduce nitrogen oxide emissions by 90% to meet EPA standards

² The approximated coach width and length does not include side view mirrors and rear ladders.

³ Maximum Trailer Weight is dependent on the loading and towing variables which include the GVWR, GAWR and GCWR, as well as adequate trailer brakes.

Because of progressive improvements and specifications, standard and optional equipment are subject to change without notice or obligation. For a complete and up-to-date list of available options and specifications, visit tiffinmotorhomes.com.



1

YEAR*
LIMITED WARRANTY

5

YEAR** DELAMINATION
LIMITED WARRANTY

10

YEAR** CONSTRUCTION
LIMITED WARRANTY

1

YEAR COACH
ROADSIDE SERVICE

∞

ONGOING
CUSTOMER SUPPORT

©2020 Tiffin Motorhomes, Inc. Allegro®, Allegro Breeze®, Allegro RED®, Phaeton®, Allegro Bus®, Zephyr®, Wayfarer®, Roughing It Smoothly®, Open Road®, PowerGlide®, and Pusher® are registered trademarks of Tiffin Motorhomes, Inc. All rights reserved.
For all information concerning the limited warranty provided by Tiffin, please refer to the full written limited warranty set forth on the Tiffin website or held by our authorized dealerships. Please note, some interior furnishings not included.
* or 12,000 miles. ** Or 50,000 miles.

FOR PARTS & SERVICE CALL 256.356.0261 OR VISIT TIFFINMOTORHOMES.COM
105 2ND ST NW RED BAY, AL 35582 [f](#) [t](#) [i](#) [p](#)