

2020

WAYFARER 25 LW

CLASS C



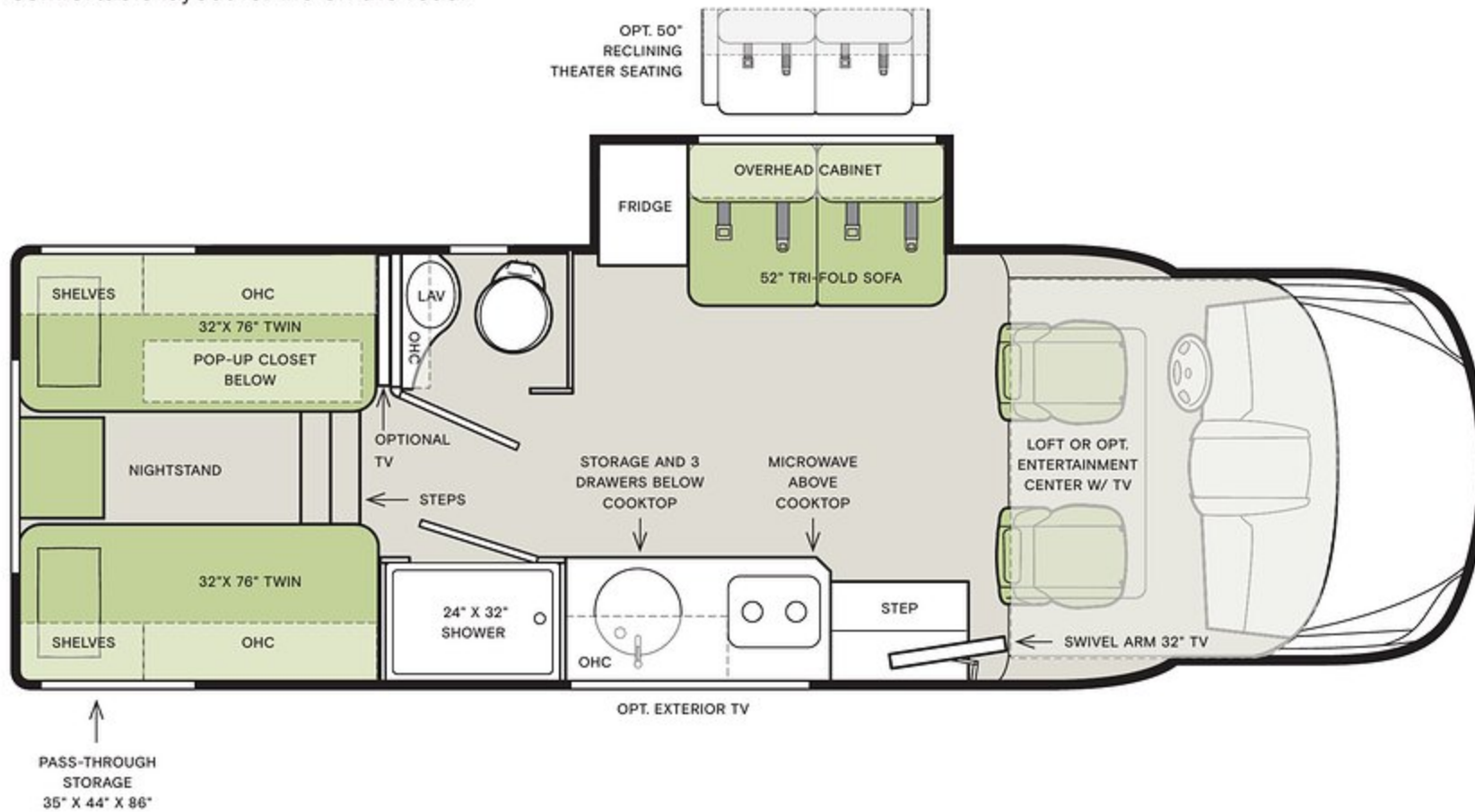
TIFFIN

Floor Plans



The design of every Wayfarer floor plan must meet four essential criteria: Maximum space, Optimal organization, Relaxation plus, and Elegant atmosphere. Tiffin's MORE Plans offer your family the most comfortable layout for life on the road.

If optional furniture combinations are selected, window locations may vary from diagram shown. All options may not be available in every model. Because of progressive improvements and specifications, standard and optional equipment are subject to change without notice or obligation. For a complete and up-to-date list of available options and specifications, visit tiffinmotorhomes.com.



TIFFIN
MOTORHOMES

FOR PARTS & SERVICE CALL 205.487.4710 OR VISIT TIFFINMOTORHOMES.COM | 625 FAWN GROVE ROAD WINFIELD, AL 35594 [f](#) [t](#) [i](#) [p](#)

©2020 Tiffin Motorhomes, Inc. Allegro®, Allegro Breeze®, Allegro RED®, Phaeton®, Allegro Bus®, Zephyr®, Wayfarer®, Roughing It Smoothly®, Open Road®, PowerGlide®, and Pusher® are registered trademarks of Tiffin Motorhomes, Inc. All rights reserved. For all information concerning the limited warranty provided by Tiffin, please refer to the full written limited warranty set forth on the Tiffin website or held by our authorized dealerships. Please note, some interior furnishings not included.

Specifications

MERCEDES CHASSIS

- 3.0 6-cylinder Turbo Diesel Engine with 7-speed Automatic Tip Shift Speed Transmission 188 HP/325 lb Torque
- GVWR – 11,030 lb
- GCWR – 15,250 lb
- GAWR Front – 4,410 lb
- GAWR Rear – 7,720 lb
- Attention Assist
- Multifunction Steering with Trip Computer
- Light and Rain Sensor
- Heated/Electric Adjustable Mirrors
- Windshield with Filter Brand
- Overhead Control Panel with Reading Lamps
- Improved Lane Keeping Assist
- Collision Prevention Assist
- High Beam Assist
- Stainless Steel Wheel Liners
- 5,000 lb Rated Hitch with 500 lb Vertical Tongue Weight and 7-pin Connector
- SumoSprings® Ride Assist System
- 170.3" Wheel Base
- 24.5 Gallon Fuel Tank
- DEF Tank ¹ (gal.): 4.8
- Load Adaptive Electronic Stability (ESP)
- Optional Aluminum Wheels

WEIGHTS & MEASUREMENTS

- Overall Length (approximately) ²: 25' 7"
- Overall Height with Roof Air (max.): 11' 4"
- Interior Height: 6' 8"
- Overall Width: 7' 6"
- Interior Width: 7' 3"
- Fresh Water (gal.): 38
- Black Water (gal.): 28
- Grey Water (gal.): 32
- LPG Tank (gal.): 20 – can only be filled to 80% capacity (16 gal. usable)
- Basement Storage (cubic feet – approximately): 68
- Passthrough Storage (cubic feet – approximately): 35" x 44" x 86"
- Trailer Hitch Capacity³: 5,000 lb

COCKPIT

- USB Port
- Radio
- Back-up Camera
- Power Cab Door Locks
- Power Cab Door Windows
- Adaptive Cruise Control
- Tilt Telescoping Steering Wheel
- Sun Visors
- 12 V Power Outlet
- Central Cab Locking with 2 Remotes
- Keyless Start
- Windshield Shades
- Black Leather Seats
- Heated Seats
- Leather Wrapped Steering Wheel Cover
- Electrically Adjustable Driver and Passenger Seat
- Swivel Seat Base for Both Driver and Passenger Seat
- Driver and Passenger Door Courtesy Lights
- 10.25" MBUX Infotainment System with In-dash Nav
- Chassis/House Battery Radio Power Switch
- Traffic Sign Assist

KITCHEN

- LP Cooktop with Built-in Cover
- Convection Microwave
- Single Bowl Sink
- Designer Faucet
- Over-the-Counter Lighting
- Under-the-Counter Lighting
- Fire Extinguisher
- Spice Rack
- 110 V Outlet
- Two-door 5 Cubic Foot Refrigerator w/2 Batteries

EXTERIOR

- Truma® Comfort Plus Instant Hot Water Heater
- One-piece Seamless Slide-out
- HD TV Antenna with Amplifier
- Two 12 V House Batteries (Group 27/180 Amp Hours)
- 30 Amp 110 V House Service
- Power Cord – 30' Permanently Attached
- 3.2 kw Diesel Generator
- 1000 Watt Inverter Pure Sine
- 110 V and 12 V House Load Center with Power Converter
- HD Over-the-Air TV Antenna
- Prep for Satellite
- Pre-wired for Solar Panels
- 13.5 K Mid Air Conditioner
- Park Cable and Ground Satellite Hook-up
- Girard® 16' Wind Sensor Awning with Speakers
- Automatic Lights in Exterior Compartment Doors
- Wall-mount Thermostat with Built-in Temperature Sensor
- 30 K BTU Propane Ducted Furnace
- 12 V Engineered Wiring Harnesses
- Entrance Door Assist Handle
- Wheel Liners

EXTERIOR OPTIONS

- Exterior TV
- 15 K Mid Air Conditioner with Heat Pump
- Complete Solar System with 170 Watt Solar Panel
- Electric Stabilizers
- BigFoot® Hydraulic Leveling System ⁴
- 2000 Watt Inverter Pure Sine
- King Wi-Fi Antenna Booster – with Range Extender
- In-motion Satellite

LIVING AREA

- Jensen® House Radio/DVD/Bluetooth
- Flush Mount Windows
- Overhead Bunk
- Living Area TV
- 50" Sofa w/ Trifold Hide-a-Bed (42" x 74") – Driver Side

LIVING AREA OPTIONS

- 50" Electric Theater Seats – Driver Side
- Overhead Entertainment Center

INTERIOR

- Separate Speaker Zones
- Stereo System
- LED Lights
- Spyder® Multiplex Coach Control System
- Privacy Shades
- 2 Captain's Chair Lounge Cushions
- Soft Vinyl Ceiling
- Premium Fabric Suites
- Combination Carbon Monoxide and Propane Detector
- Professionally Designed Interior Décor Packages
- Fantastic Vent Fan

INTERIOR OPTIONS

- Central Vacuum System with Retractable Hose

BEDROOM

- Inverted Outlets in Bedroom for CPAP Machine
- USB Port with 110 V Plug
- LED Reading Lights
- Two Twin Mattresses (32" x 76") with Pop-up Closet Storage on Driver Side
- Nightstand

BEDROOM OPTIONS

- Bedroom TV

BATHROOM

- Vanity Storage
- Porcelain Vessel Sink with Chrome Faucet
- Fantastic Vent Fan
- Shower (24" x 32") with Skylight

INTERIOR DÉCOR

CABINETS

- Russet
- Landis Ash
- Linen

LEATHERS

- Fossil
- Tavern
- White Sand

SUITES

- Oasis
- Soho
- Sparrow

WALLCOVERING

- Brodie Khaki
- Restin Ivory

¹ Diesel Exhaust Fluid (DEF) is the active component used in Selective Catalytic Reduction (SCR) engines to reduce nitrogen oxide emissions by 90% to meet EPA standards.

² The approximated coach width and length does not include side-view mirrors.

³ Tow ratings and ability are subject to gross combined weight ratings on the tow vehicle.

⁴ Not available with electric stabilizers.

Premium Paint System

Our eight-step full-body paint system features premium grade paints sealed with three layers of superclear coat with ultraviolet protection. An additional layer of scratch-resistant plastic coating protects the front of the coach, stairwell, and entry door lock.



CORDOVA



FRONTIER



GOLDEN FIRE



IMPERIAL



MOUNTAIN PEAK



SEA MIST