



SONIC | SONIC LITE

Ultra Lite Travel Trailers



Designed for campers, by campers.



SONIC | SONIC LITE

Ultra Lite Travel Trailers



Designed for campers, by campers.

SONIC LITE

Venture RV's single axle Sonic Lite offers solid construction, with floorplans starting out at a fuel-saving 3,040 pounds! Sonic Lite features the most interior storage in its class. Interiors are surprisingly spacious – there's ample storage and Lite boasts many of the same features as Sonic, on a more compact scale.

Both Sonic Lite and Sonic are engineered with a one-piece seamless fiberglass roof system. By arching the roof front to back, this system provides a more durable roof. When it rains, the water runs fore and aft.



The Sonic Lite 169VUD offers a double bunk, large 65" x 48" dinette, a 60" x 75" queen bed and large dry bath. All kitchens feature a 7 CU FT gas/electric double-door refrigerator for ample food storage, 2-burner stainless steel cooktop, microwave, roller ball bearing drawer guides, and cabinets with mortise and tenon hardwood cabinet doors.



Sonic Lite bedrooms feature overhead storage, full-length shirt closet and StorMor nightstands with 110V outlet and USB charging port.



Double bunk floorplans offer Teddy Bear bunk mattresses, and each bunk has its own window.



Bathrooms include porcelain foot-flush toilet, tub or shower surround and skylight.

SONIC LITE

Venture RV's single axle Sonic Lite offers solid construction, with floorplans starting out at a fuel-saving 3,040 pounds! Sonic Lite features the most interior storage in its class. Interiors are surprisingly spacious – there's ample storage and Lite boasts many of the same features as Sonic, on a more compact scale.

Both Sonic Lite and Sonic are engineered with a one-piece seamless fiberglass roof system. By arching the roof front to back, this system provides a more durable roof. When it rains, the water runs fore and aft.



The Sonic Lite 169VUD offers a double bunk, large 65" x 48" dinette, a 60" x 75" queen bed and large dry bath. All kitchens feature a 7 CU FT gas/electric double-door refrigerator for ample food storage, 2-burner stainless steel cooktop, microwave, roller ball bearing drawer guides, and cabinets with mortise and tenon hardwood cabinet doors.



SL150VRK

Sonic Lite bedrooms feature overhead storage, full-length shirt closet and StorMor nightstands with 110V outlet and USB charging port.



SL169VUD

Double bunk floorplans offer Teddy Bear bunk mattresses, and each bunk has its own window.



SL169VUD

Bathrooms include porcelain foot-flush toilet, tub or shower surround and skylight.

SONIC



The ten-second Murphy bed is available in most Sonic floorplans, like the SN220VRB, shown here. Murphy beds allow for increased living space during the day by using the fold-down sofa, and easily convert into a comfortable bed in less than ten seconds. Murphys also let you keep sheets and bedding in place; no need to continually remake the bed – just fold it up!

The ginormous 88" x 48" U-dinette is designed for comfort, both as a dinette and an additional bed.



Sonic kitchens feature a glass flush-mounted 3-burner cooktop with oven, microwave, exhaust fan, 7 CUFT refrigerator, and deep stainless steel single bowl sink.

Families on the go want it both ways – maximum towing efficiency, plus uncompromising comfort and style. Sonic delivers; its ultra-lightweight, tandem-axle travel trailers are designed for smaller tow vehicles, yet equipped with upscale amenities usually seen in motorhomes. Livable and surprisingly spacious, Sonic offers 82" ceilings, a residential kitchen and ample storage to keep clutter at bay. Sonic's solid construction offers peace of mind and all the comforts of home.

SONIC



The ten-second Murphy bed is available in most Sonic floorplans, like the SN220VRB, shown here. Murphy beds allow for increased living space during the day by using the fold-down sofa, and easily convert into a comfortable bed in less than ten seconds. Murphys also let you keep sheets and bedding in place; no need to continually remake the bed – just fold it up!

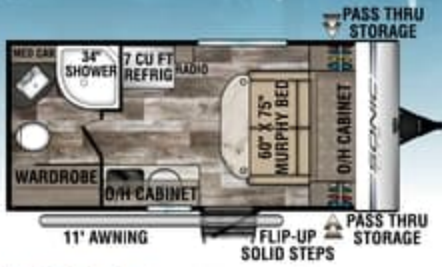
The ginormous 88" x 48" U-dinette is designed for comfort, both as a dinette and an additional bed.



Families on the go want it both ways – maximum towing efficiency, plus uncompromising comfort and style. Sonic delivers; its ultra-lightweight, tandem-axle travel trailers are designed for smaller tow vehicles, yet equipped with upscale amenities usually seen in motorhomes. Livable and surprisingly spacious, Sonic offers 82" ceilings, a residential kitchen and ample storage to keep clutter at bay. Sonic's solid construction offers peace of mind and all the comforts of home.

Sonic kitchens feature a glass flush-mounted 3-burner cooktop with oven, microwave, exhaust fan, 7 CU FT refrigerator, and deep stainless steel single bowl sink.

Sonic Lite Floorplans



NEW

SLI50VRB | 3,100 UVW | 19' 8" LENGTH | SLEEPS 2



SLI50VRK | 3,040 UVW | 19' 3" LENGTH | SLEEPS 2



SLI68VRB | 3,250 UVW | 21' LENGTH | SLEEPS 4



SLI69VBH | 3,210 UVW | 21' 4" LENGTH | SLEEPS 4



SLI69VMK | 3,500 UVW | 21' 3" LENGTH | SLEEPS 4



NEW

SLI69VRK | 3,540 UVW | 22' 3" LENGTH | SLEEPS 4

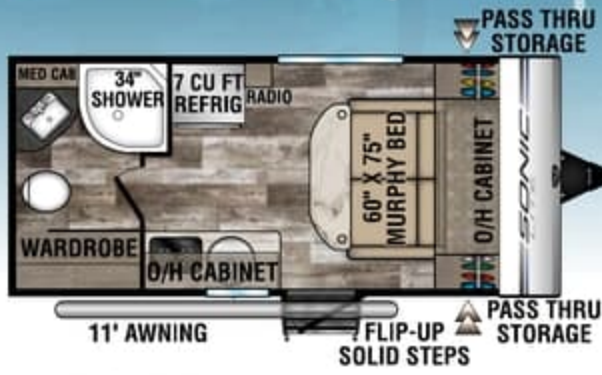


SLI69VUD | 3,430 UVW | 22' LENGTH | SLEEPS 6

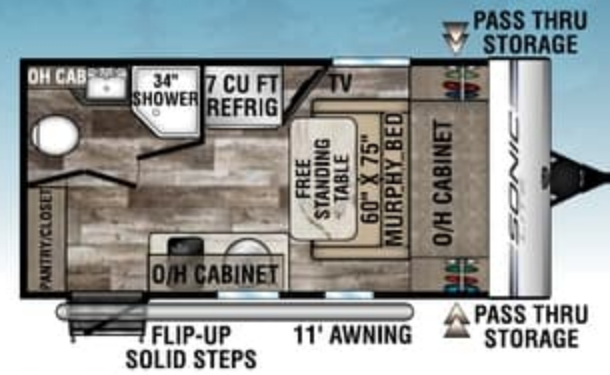
TRAVEL TRAILERS	SLI50VRB	SLI50VRK	SLI68VRB	SLI69VBH	SLI69VMK	SLI69VRK	SLI69VUD
UVW (Unloaded Vehicle Weight)*	3,100	3,040	3,250	3,210	3,500	3,540	3,430
Dry Hitch Weight*	470	360	320	400	380	330	470
Dry Axle Weight*	TBD	2,680	2,930	2,810	3,120	3,210	2,960
NCC (Net Carrying Capacity)	625	640	910	990	690	625	805
Interior Height	TBD	82"	82"	82"	82"	82"	82"
Exterior Height with A/C	TBD	9' 11"	9' 11"	9' 11"	9' 11"	9' 11"	9' 11"
Exterior Width	90"	90"	90"	90"	90"	90"	90"
Exterior Length	19' 8"	19' 3"	21'	21' 4"	21' 3"	22' 3"	22'
Refrigerator (Cubic Feet)	7	7	7	7	7	7	7
Water Heater Capacity (Gal. G/E w/D/S)	TBD	6	6	6	6	6	6
Fresh Water Capacity (Gallon)	38	38	38	38	38	38	38
Black Water Capacity (Gallon)	30	30	30	30	30	30	30
Gray Water Capacity (Gallon)	30	30	30	30	30	45	30
LP Gas Capacity (Lbs.)	20	20	20	20	20	20	20
Furnace BTUs (1,000s)	16	16	16	16	16	16	16
Tire Size	14"	14"	15"	15"	15"	15"	15"
Awning	11'	11'	11'	11'	12'	13'	12'

*This weight reflects the rolling average unit weight for each model. Your trailer weight will vary according to optional equipment.

Sonic Lite Floorplans



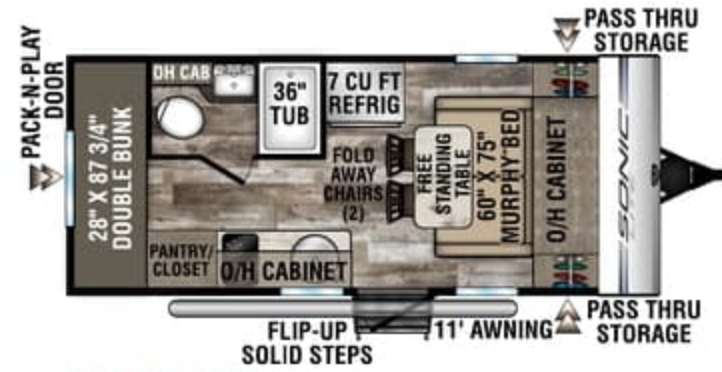
SLI50VRB | 3,100 UVW | 19' 8" LENGTH | SLEEPS 2



SLI50VRK | 3,040 UVW | 19' 3" LENGTH | SLEEPS 2



SLI68VRB | 3,250 UVW | 21' LENGTH | SLEEPS 4



SLI69VBH | 3,210 UVW | 21' 4" LENGTH | SLEEPS 4



SLI69VMK | 3,500 UVW | 21' 3" LENGTH | SLEEPS 4



SLI69VRK | 3,540 UVW | 22' 3" LENGTH | SLEEPS 4



SLI69VUD | 3,430 UVW | 22' LENGTH | SLEEPS 6

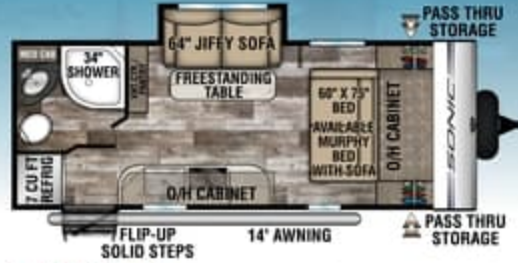
TRAVEL TRAILERS	SLI50VRB	SLI50VRK	SLI68VRB	SLI69VBH	SLI69VMK	SLI69VRK	SLI69VUD
UVW (Unloaded Vehicle Weight)*	3,100	3,040	3,250	3,210	3,500	3,540	3,430
Dry Hitch Weight*	470	360	320	400	380	330	470
Dry Axle Weight*	TBD	2,680	2,930	2,810	3,120	3,210	2,960
NCC (Net Carrying Capacity)	625	640	910	990	690	625	805
Interior Height	TBD	82"	82"	82"	82"	82"	82"
Exterior Height with A/C	TBD	9' 11"	9' 11"	9' 11"	9' 11"	9' 11"	9' 11"
Exterior Width	90"	90"	90"	90"	90"	90"	90"
Exterior Length	19' 8"	19' 3"	21'	21' 4"	21' 3"	22' 3"	22'
Refrigerator (Cubic Feet)	7	7	7	7	7	7	7
Water Heater Capacity (Gal. G/E w/DSI)	TBD	6	6	6	6	6	6
Fresh Water Capacity (Gallon)	38	38	38	38	38	38	38
Black Water Capacity (Gallon)	30	30	30	30	30	30	30
Gray Water Capacity (Gallon)	30	30	30	30	30	45	30
LP Gas Capacity (Lbs.)	20	20	20	20	20	20	20
Furnace BTUs (1,000s)	16	16	16	16	16	16	16
Tire Size	14"	14"	15"	15"	15"	15"	15"
Awning	11'	11'	11'	11'	12'	13'	12'

*This weight reflects the rolling average unit weight for each model. Your trailer weight will vary according to optional equipment.

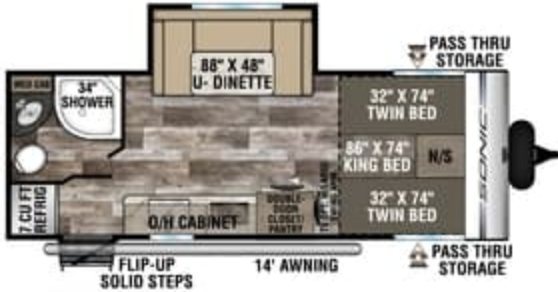
Sonic Floorplans



SN190VRB | 3,770 UVW | 23' 2" LENGTH | SLEEPS 4



SN200VML | 4,000 UVW | 23' 4" LENGTH | SLEEPS 4



SN210VTB | 4,190 UVW | 24' 10" LENGTH | SLEEPS 4



SN211VDB | 4,590 UVW | 26' 11" LENGTH | SLEEPS 8

NEW



SN220VBH | 4,560 UVW | 26' 5" LENGTH | SLEEPS 6



SN220VRB | 4,760 UVW | 26' 11" LENGTH | SLEEPS 4



SN231VRK | 4,500 UVW | 26' 9" LENGTH | SLEEPS 4



SN231VRL | 4,460 UVW | 26' 9" LENGTH | SLEEPS 6

TRAVEL TRAILERS

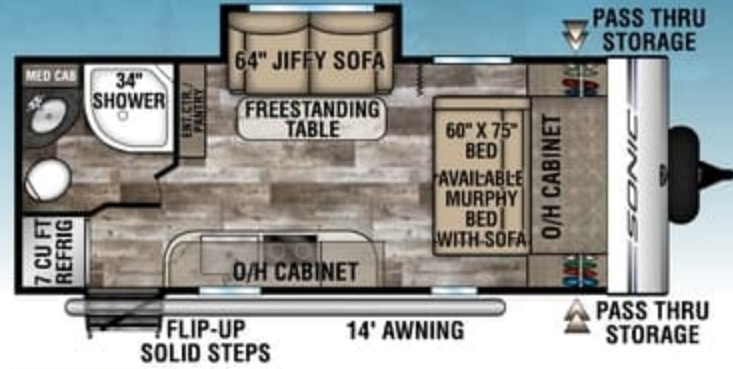
	SN190VRB	SN200VML	SN210VTB	SN211VDB	SN220VBH	SN220VRB	SN231VRK	SN231VRL
UVW (Unloaded Vehicle Weight)*	3,770	4,000	4,190	4,590	4,560	4,760	4,500	4,460
Dry Hitch Weight*	350	300	390	580	500	480	430	520
Dry Axle Weight*	3,420	3,700	3,800	4,010	4,060	4,280	4,070	3,940
NCC (Net Carrying Capacity)	2,005	1,750	1,605	1,300	1,290	1,080	1,315	1,400
Interior Height	82"	82"	82"	82"	82"	82"	82"	82"
Exterior Height with A/C	10' 4"	10' 4"	10' 4"	10' 4"	10' 4"	10' 4"	10' 4"	10' 4"
Exterior Width	90"	90"	90"	90"	90"	90"	90"	90"
Exterior Length	23' 2"	23' 4"	24' 10"	26' 11"	26' 5"	26' 11"	26' 9"	26' 9"
Refrigerator (Cubic Feet)	7	7	7	7	7	7	7	7
Water Heater Cap. (Gal. G/E w/DSI)	6	6	6	6	6	6	6	6
Fresh Water Capacity (Gallon)	39	39	39	39	39	39	39	39
Black Water Capacity (Gallon)	30	30	30	30	30	30	30	30
Gray Water Capacity (Gallon)	30	30	30	30	30	30	60	30
LP Gas Capacity (Lbs.)	40	40	40	40	40	40	40	40
Furnace BTUs (1,000s)	20	20	20	TBD	20	20	20	20
Tire Size	14"	14"	14"	14"	14"	14"	14"	14"
Awning	13'	14'	14'	14'	13'	13'	17'	17'

*This weight reflects the rolling average unit weight for each model. Your trailer weight will vary according to optional equipment.

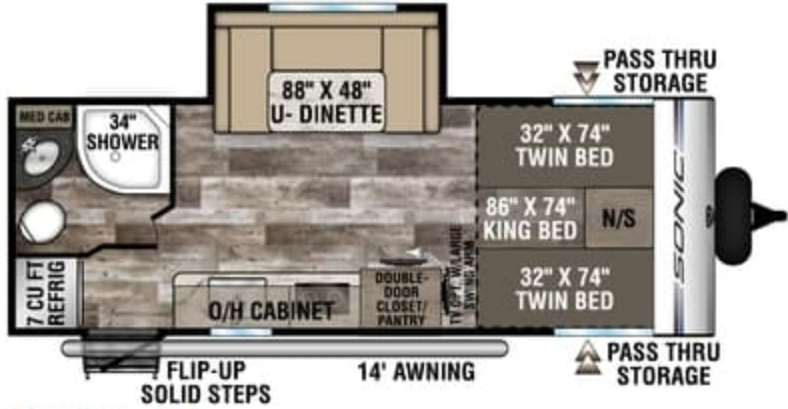
Sonic Floorplans



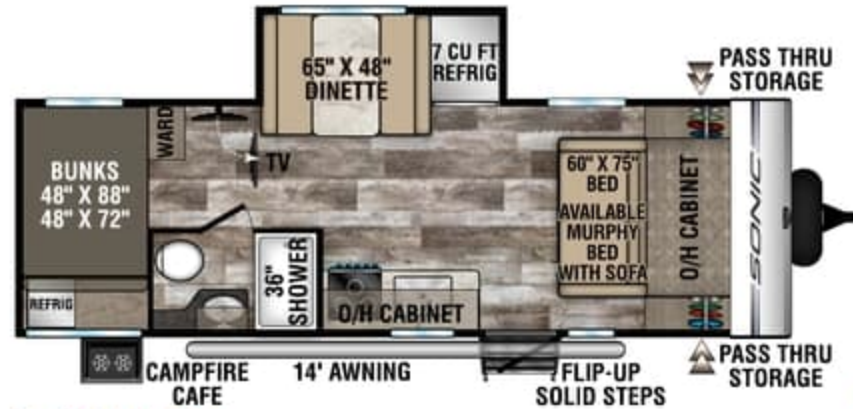
SN190VRB | 3,770 UVW | 23' 2" LENGTH | SLEEPS 4



SN200VML | 4,000 UVW | 23' 4" LENGTH | SLEEPS 4

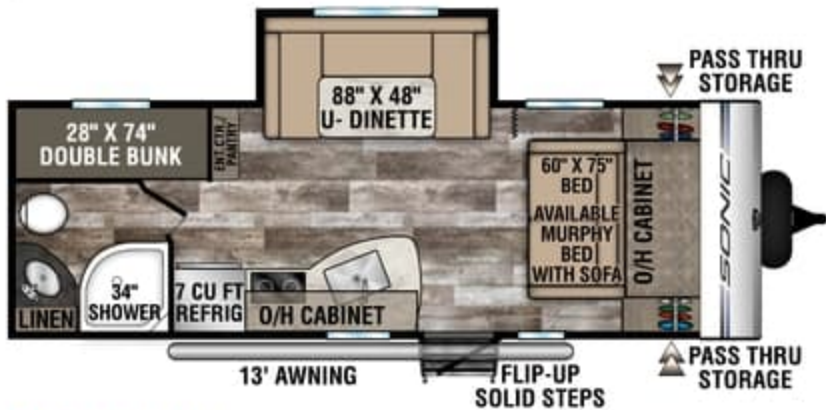


SN210VTB | 4,190 UVW | 24' 10" LENGTH | SLEEPS 4



SN211VDB | 4,590 UVW | 26' 11" LENGTH | SLEEPS 8

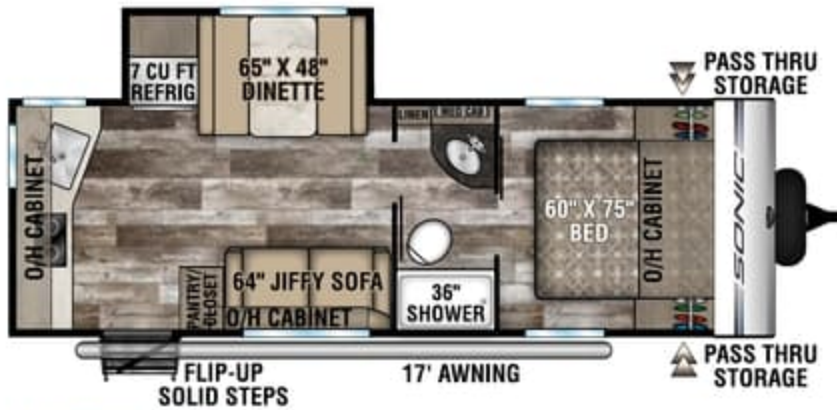
NEW



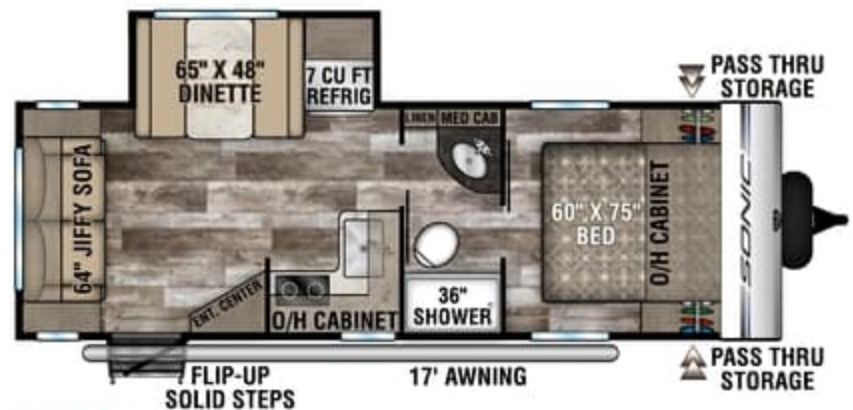
SN220VBH | 4,560 UVW | 26' 5" LENGTH | SLEEPS 6



SN220VRB | 4,760 UVW | 26' 11" LENGTH | SLEEPS 4



SN231VRK | 4,500 UVW | 26' 9" LENGTH | SLEEPS 4



SN231VRL | 4,460 UVW | 26' 9" LENGTH | SLEEPS 6

TRAVEL TRAILERS	SN190VRB	SN200VML	SN210VTB	SN211VDB	SN220VBH	SN220VRB	SN231VRK	SN231VRL
UVW (Unloaded Vehicle Weight)*	3,770	4,000	4,190	4,590	4,560	4,760	4,500	4,460
Dry Hitch Weight*	350	300	390	580	500	480	430	520
Dry Axle Weight*	3,420	3,700	3,800	4,010	4,060	4,280	4,070	3,940
NCC (Net Carrying Capacity)	2,005	1,750	1,605	1,300	1,290	1,080	1,315	1,400
Interior Height	82"	82"	82"	82"	82"	82"	82"	82"
Exterior Height with A/C	10' 4"	10' 4"	10' 4"	10' 4"	10' 4"	10' 4"	10' 4"	10' 4"
Exterior Width	90"	90"	90"	90"	90"	90"	90"	90"
Exterior Length	23' 2"	23' 4"	24' 10"	26' 11"	26' 5"	26' 11"	26' 9"	26' 9"
Refrigerator (Cubic Feet)	7	7	7	7	7	7	7	7
Water Heater Cap. (Gal. G/E w/DSI)	6	6	6	6	6	6	6	6
Fresh Water Capacity (Gallon)	39	39	39	39	39	39	39	39
Black Water Capacity (Gallon)	30	30	30	30	30	30	30	30
Gray Water Capacity (Gallon)	30	30	30	30	30	30	60	30
LP Gas Capacity (Lbs.)	40	40	40	40	40	40	40	40
Furnace BTUs (1,000s)	20	20	20	TBD	20	20	20	20
Tire Size	14"	14"	14"	14"	14"	14"	14"	14"
Awning	13'	14'	14'	14'	13'	13'	17'	17'

*This weight reflects the rolling average unit weight for each model. Your trailer weight will vary according to optional equipment.

Sonic Lite Standards & Options

Living Room/Kitchen

- (2) Interior Speakers
- High Efficiency LED Lighting
- Martise & Tenon Hardwood Doors
- Round Stainless Steel Sink
- Pleated Nightshades
- Roller Ball Bearing Drawer Guides
- Shoe Cubby (F/P specific)
- Skylight

Bathroom

- Designer Shower Curtain (F/P specific)
- High Efficiency LED Lighting
- Mirrored Medicine Cabinet w/Storage (F/P specific)
- Porcelain Foot-Flush Toilet
- Skylight Shower
- Tub Surround

Bedroom

- 110V Outlet(s)
- Designer Valances
- Foam Mattress
- High Efficiency LED Lighting
- Overhead Storage
- Pleated Nightshades
- Quilted Comforter
- Shirt Closet(s)
- USB Charger

Exterior/Construction Standards

- (2) Marine Grade Speakers

- Aluminum-Framed Floor, Sidewalls & Roof
- Easy Exchange 20# LP Tank
- High Efficiency LED Lighting
- Keyed-Alike Baggage & Entry Doors
- Large Bumper w/Sewer Hose Storage
- Large Pass-Thru Storage
- Norco-BAL E-Coated & Epoxy Painted Frame
- One-Piece Seamless Fiberglass Roof
- Porch Light
- Tank Monitor System
- Tinted Safety Glass Windows
- Two-Tone White & Grey Color Infused Fiberglass
- Water Heater Bypass Valve

Venture Levelmate System (Mandatory)

- Venture Exclusive Wireless RV Leveling System

XL Luxury Package (Mandatory)

- 7 CU FT Double Door Gas/Electric Refrigerator
- 13.5 Low-Profile A/C

Exterior Luxury Package (Mandatory)

- 5/8" Tongue & Groove Plywood Floor Decking
- 4" Tube Bumper Sewer Hose Storage
- (4) Angled Scissor Jacks w/Footpads
- 360° Radiant Foil Insulation

- Automotive Graphics
- B.A.L. Powder Coated Frame
- Battery Disconnect Switch
- Block Tank Flush
- Dedicated Cable & Satellite Hookups
- Dual Color Fiberglass
- Exterior Shower w/Hot & Cold Water
- Flip-Up Solid Step
- Friction Hinge Entry Door
- Furrion Marine Grade Detachable Power Cord
- High-Polished Aluminum Rims
- Keyed Alike Key System
- Large Grab Handle
- LED Lighted Power Awning
- Lighted Pass-Thru Storage
- LP Quick Connect
- One-Piece Seamless Fiberglass Roof
- Prewired for Furrion Backup Camera
- Prewired for Furrion Solar Panel System
- Screen Shot Screen Door
- Single Axles w/Auto Adjust Brakes & EZ Lube Hubs
- Slam Latch Baggage Doors w/Magnetic Catches
- Venture Bottle Opener/Dog Tie Down

Interior Luxury Package (Mandatory)

- 2-Burner Stainless Steel Cooktop
- 6 GAL DSI Gas/Electric Water Heater
- 82" Ceiling Height
- Convection Microwave
- Designer Padded Headboard

- Designer Quilted Comforter
- Designer Backsplash
- HDMI Bluetooth AM/FM /DVD/CD/MP3 w/5.1 USB Port Charger
- In-House Custom Dinette Cushions
- LED Lighting
- Porcelain Toilet
- Power Exhaust Fan in Bathroom
- Safe Tek® Box w/110V & USB Charging
- Shoe Cubby (F/P specific)
- Stainless Steel Appliances
- StorMore Bedside Nightstands
- Surf(x) Seamless Countertops w/Sink Cover & Tabletops
- Vented Range Hood

Options

- A-Frame Bike Rack
- Furrion Observation Back-Up Camera
- Lighted Power Tongue Jack
- Spare Tire, Carrier & Cover
- Swing Away Bumper Mount Griddle
- TV w/Swing Arm
- Upgraded Mattress (N/A 150VRK, 169VBH)

1.2 Blast Package (Option)

- Entry Door w/Clearview Window
- HDMI Stereo DVD w/5.1 USB Port
- King Wi-Fi Prep
- Lighted Power Tongue Jack
- Round Stainless Steel Sink w/Cover
- Spare Tire, Carrier & Cover
- Venture LevelMate PRO



Sonic Lite features a round, single-bowl stainless steel sink with a cover that increases counter space.



Designer glass overhead cabinets provide deep storage.



Both Sonic and Sonic Lite provide a 7 CU FT double door gas/electric refrigerator/freezer.



Safe Tek box provides a hidden charging station with USB and 110V outlets.

Sonic Lite Standards & Options

Living Room/Kitchen

- (2) Interior Speakers
- High Efficiency LED Lighting
- Mortise & Tenon Hardwood Doors
- Round Stainless Steel Sink
- Pleated Nightshades
- Roller Ball Bearing Drawer Guides
- Shoe Cubby (F/P specific)
- Skylight

Bathroom

- Designer Shower Curtain (F/P specific)
- High Efficiency LED Lighting
- Mirrored Medicine Cabinet w/Storage (F/P specific)
- Porcelain Foot-Flush Toilet
- Skylight Shower
- Tub Surround

Bedroom

- 110V Outlet(s)
- Designer Valances
- Foam Mattress
- High Efficiency LED Lighting
- Overhead Storage
- Pleated Nightshades
- Quilted Comforter
- Shirt Closet(s)
- USB Charger

Exterior/Construction Standards

- (2) Marine Grade Speakers

- Aluminum-Framed Floor, Sidewalls & Roof
- Easy Exchange 20# LP Tank
- High Efficiency LED Lighting
- Keyed-Alike Baggage & Entry Doors
- Large Bumper w/Sewer Hose Storage
- Large Pass-Thru Storage
- Norco-BAL E-Coated & Epoxy Painted Frame
- One-Piece Seamless Fiberglass Roof
- Porch Light
- Tank Monitor System
- Tinted Safety Glass Windows
- Two-Tone White & Grey Color Infused Fiberglass
- Water Heater Bypass Valve

Venture Levelmate System (Mandatory)

- Venture Exclusive Wireless RV Leveling System

XL Luxury Package (Mandatory)

- 7 CU FT Double Door Gas/Electric Refrigerator
- 13.5 Low-Profile A/C

Exterior Luxury Package (Mandatory)

- 5/8" Tongue & Groove Plywood Floor Decking
- 4" Tube Bumper Sewer Hose Storage
- (4) Angled Scissor Jacks w/Footpads
- 360° Radiant Foil Insulation

- Automotive Graphics
- B.A.L. Powder Coated Frame
- Battery Disconnect Switch
- Black Tank Flush
- Dedicated Cable & Satellite Hookups
- Dual Color Fiberglass
- Exterior Shower w/Hot & Cold Water
- Flip-Up Solid Step
- Friction Hinge Entry Door
- Furrion Marine Grade Detachable Power Cord
- High-Polished Aluminum Rims
- Keyed Alike Key System
- Large Grab Handle
- LED Lighted Power Awning
- Lighted Pass-Thru Storage
- LP Quick Connect
- One-Piece Seamless Fiberglass Roof
- Prewired for Furrion Backup Camera
- Prewired for Furrion Solar Panel System
- Screen Shot Screen Door
- Single Axles w/Auto Adjust Brakes & EZ Lube Hubs
- Slam Latch Baggage Doors w/Magnetic Catches
- Venture Bottle Opener/Dog Tie Down

Interior Luxury Package (Mandatory)

- 2-Burner Stainless Steel Cooktop
- 6 GAL DSI Gas/Electric Water Heater
- 82" Ceiling Height
- Convection Microwave
- Designer Padded Headboard

- Designer Quilted Comforter
- Designer Backsplash
- HDMI Bluetooth AM/FM /DVD/CD/MP3 w/5.1 USB Port Charger
- In-House Custom Dinette Cushions
- LED Lighting
- Porcelain Toilet
- Power Exhaust Fan in Bathroom
- SafeTek® Box w/110V & USB Charging
- Shoe Cubby (F/P specific)
- Stainless Steel Appliances
- StorMore Bedside Nightstands
- Surf(x) Seamless Countertops w/Sink Cover & Tabletops
- Vented Range Hood

Options

- A-Frame Bike Rack
- Furrion Observation Back-Up Camera
- Lighted Power Tongue Jack
- Spare Tire, Carrier & Cover
- Swing Away Bumper Mount Griddle
- TV w/Swing Arm
- Upgraded Mattress (N/A 150VRK, 169VBH)

1.2 Blast Package (Option)

- Entry Door w/Clearview Window
- HDMI Stereo DVD w/5.1 USB Port
- King Wi-Fi Prep
- Lighted Power Tongue Jack
- Round Stainless Steel Sink w/Cover
- Spare Tire, Carrier & Cover
- Venture LevelMate PRO



Sonic Lite features a round, single-bowl stainless steel sink with a cover that increases counter space.



Designer glass overhead cabinets provide deep storage.



Both Sonic and Sonic Lite provide a 7 CU FT double door gas/electric refrigerator/freezer.



Safe Tek box provides a hidden charging station with USB and 110V outlets.

Sonic Standards & Options

Living Room/Kitchen

- (2) Interior Speakers
- High Efficiency LED Lights
- Large Undermount Stainless Steel Single Bowl Sink
- Microwave
- Pleated Nightshades
- Roller Ball Bearing Drawer Guides
- Solid Wood Cabinets
- Surfex Seamless Countertop w/Sink Cover

Bath

- High Efficiency LED Lights
- Medicine Cabinet
- Residential Radius Shower w/Glass Doors (most models)

Bedroom

- (2) Shirt Closets
- Designer Valances
- Foam Mattress
- High Efficiency LED Lights
- Overhead Storage
- Pleated Nightshades
- Quilted Comforter
- StorMore Nightstands w/110 & USB Port
- Under-Bed Storage
- USB Charging Port

Exterior/Construction Features

- (2) Marine Grade Exterior Speakers
- EZ Exchange® (2) 20 LB LP Gas Tanks w/ Auto Changeover
- Exterior Shower w/Hot & Cold Water
- High Efficiency Exterior LED Lighting

- Laminated Sidewalls w/Aluminum Framing
- Large Pass-Thru Storage
- Porch Light
- Power Cord w/Light
- Tank Monitor System
- Tinted Safety Glass Windows
- Two-Tone White & Grey Fiberglass Walls
- Water Heater Bypass Valve

Venture Levelmate System (Mandatory)

- Venture Exclusive Wireless RV Leveling System

Weather-Shield Package (Mandatory)

- 360° Radiant Foil Insulation (360° = Roof, Floor, Front/Rear Walls)
- 360° Residential Fiberglass Insulation (360° = Roof, Floor, Front/Rear Walls)
- Forced-Air Heated & Enclosed Underbelly
- Radiant Foil Insulation Wrapped Tanks

Exterior Package (Mandatory)

- 5/8" Tongue & Groove Plywood Floor Decking
- 4" Tube Bumper Sewer Hose Storage
- (4) Angled Scissor Jacks w/Footpads
- Battery Disconnect Switch
- Carbon Fiber Look Rock Guard & Slideout End Walls
- Dedicated Cable & Satellite hookups
- Fender Guards
- Friction Hinge Entry Door
- Furrion Marine Grade Detachable Power Cord

- Hot & Cold Outside Shower
- Keyed-Alike Key System
- Large Grab Handle
- Lighted Pass-thru Storage
- NXG Huck-Bolt Frame
- Prewired for Furrion Backup Camera
- Prewired for Furrion Solar Panel System
- Screen Shot Spring Screen Door
- Seamless, One Piece Fiberglass Roof
- Slam-Latch Luggage Doors w/Magnetic Catches
- Solid Flip-Up Step
- Spread Axles w/Auto Adjust Brakes and EZ Lube Hubs
- Swing Away Grab Handle
- Venture Bottle Opener/Dog Tie Out

Interior Package (Mandatory)

- 6 GAL Gas/Electric DSI Water Heater
- 7 CU FT Double Door Refrigerator/Freezer
- 82" Ceiling Height
- Backsplash
- Designer Padded Headboard w/Storage
- Euro Steel Faucet
- Furrion Bluetooth Stereo AM/FM/DVD/CD/MP3
- LED Lighting
- Woodgrain Linoleum w/7-Year Limited Warranty
- Porcelain Toilet
- Power Exhaust Fan in Bathroom
- Quilted Comforter
- Safe Tek® Box w/110v and USB Charging
- Shoe Cubby (F/P specific)
- Skylight in Living Area

- Stainless Steel Accented Appliances
- StorMore Bedside Nightstands
- Vented Range Hood

Options

- 13,500 A/C
- 15,000 A/C
- A-Frame Bike Rack
- Furrion Observation/Backup Camera
- High Polished Aluminum Rims
- LED TV w/Swing Arm
- Lighted Power Tongue Jack
- Murphy Bed w/Sofa & Upgraded Mattress (N/A 231VRK, 231VRL, 210VTB)
- Swing-Away Bumper Mount Griddle
- Upgraded Mattress (N/A 210VTB)

Highway Package (Opt.)

- Black Tank Flush
- LP Bottle Cover
- Spare Tire, Carrier & Cover

1.2 Discovery Package (Opt.)

- Aluminum Rims w/Black Accents
- Entry Door w/Clearview Window
- Furrion Oven & 3-Burner Cooktop w/Flush-Mount Glass Cover
- HDMI Stereo DVD w/5.1 USB Port
- King Wi-Fi Prep
- LED Lighted Power Awning
- Power Tongue Jack
- Sink Cover/Dish Drying Rack



The SN220VRB has a huge bathroom linen closet. All Sonics have a porcelain foot-flush toilet.



Sonics optimize the storage in every floorplan. The SN220VRB has two pantries and a large linen closet.



Skylight offers plenty of light and headroom.



Sonic features a glass-topped, flush-mounted, 3-burner cooktop with oven.



Baycayne interior, shown in SN190VRB.

Sonic Standards & Options

Living Room/Kitchen

- (2) Interior Speakers
- High Efficiency LED Lights
- Large Undermount Stainless Steel Single Bowl Sink
- Microwave
- Pleated Nightshades
- Roller Ball Bearing Drawer Guides
- Solid Wood Cabinets
- Surfex Seamless Countertop w/Sink Cover

Bath

- High Efficiency LED Lights
- Medicine Cabinet
- Residential Radius Shower w/Glass Doors (most models)

Bedroom

- (2) Shirt Closets
- Designer Valances
- Foam Mattress
- High Efficiency LED Lights
- Overhead Storage
- Pleated Nightshades
- Quilted Comforter
- StorMore Nightstands w/110 & USB Port
- Under-Bed Storage
- USB Charging Port

Exterior/Construction Features

- (2) Marine Grade Exterior Speakers
- EZ Exchange® (2) 20 LB LP Gas Tanks w/ Auto Changeover
- Exterior Shower w/Hot & Cold Water
- High Efficiency Exterior LED Lighting

- Laminated Sidewalls w/Aluminum Framing
- Large Pass-Thru Storage
- Porch Light
- Power Cord w/Light
- Tank Monitor System
- Tinted Safety Glass Windows
- Two-Tone White & Grey Fiberglass Walls
- Water Heater Bypass Valve

Venture Levelmate System (Mandatory)

- Venture Exclusive Wireless RV Leveling System

Weather-Shield Package (Mandatory)

- 360° Radiant Foil Insulation (360° = Roof, Floor, Front/Rear Walls)
- 360° Residential Fiberglass Insulation (360° = Roof, Floor, Front/Rear Walls)
- Forced-Air Heated & Enclosed Underbelly
- Radiant Foil Insulation Wrapped Tanks

Exterior Package (Mandatory)

- 5/8" Tongue & Groove Plywood Floor Decking
- 4" Tube Bumper Sewer Hose Storage
- (4) Angled Scissor Jacks w/Footpads
- Battery Disconnect Switch
- Carbon Fiber Look Rock Guard & Slideout End Walls
- Dedicated Cable & Satellite hookups
- Fender Guards
- Friction Hinge Entry Door
- Furrion Marine Grade Detachable Power Cord

- Hot & Cold Outside Shower
- Keyed-Alike Key System
- Large Grab Handle
- Lighted Pass-thru Storage
- NXG Huck-Bolt Frame
- Prewired for Furrion Backup Camera
- Prewired for Furrion Solar Panel System
- Screen Shot Spring Screen Door
- Seamless, One Piece Fiberglass Roof
- Slam-Latch Baggage Doors w/Magnetic Catches
- Solid Flip-Up Step
- Spread Axles w/Auto Adjust Brakes and EZ Lube Hubs
- Swing Away Grab Handle
- Venture Bottle Opener/Dog Tie Out

Interior Package (Mandatory)

- 6 GAL Gas/Electric DSI Water Heater
- 7 CU FT Double Door Refrigerator/Freezer
- 82" Ceiling Height
- Backsplash
- Designer Padded Headboard w/Storage
- Euro Steel Faucet
- Furrion Bluetooth Stereo AM/FM/DVD/CD/MP3
- LED Lighting
- Woodgrain Linoleum w/7-Year Limited Warranty
- Porcelain Toilet
- Power Exhaust Fan in Bathroom
- Quilted Comforter
- SafeTek® Box w/110v and USB Charging
- Shoe Cubby (F/P specific)
- Skylight in Living Area

- Stainless Steel Accented Appliances
- StorMore Bedside Nightstands
- Vented Range Hood

Options

- 13,500 A/C
- 15,000 A/C
- A-Frame Bike Rack
- Furrion Observation/Backup Camera
- High Polished Aluminum Rims
- LED TV w/Swing Arm
- Lighted Power Tongue Jack
- Murphy Bed w/Sofa & Upgraded Mattress (N/A 231VRK, 231VRL, 210VTB)
- Swing-Away Bumper Mount Griddle
- Upgraded Mattress (N/A 210VTB)

Highway Package (Opt.)

- Black Tank Flush
- LP Bottle Cover
- Spare Tire, Carrier & Cover

1.2 Discovery Package (Opt.)

- Aluminum Rims w/Black Accents
- Entry Door w/Clearview Window
- Furrion Oven & 3-Burner Cooktop w/Flush-Mount Glass Cover
- HDMI Stereo DVD w/5.1 USB Port
- King Wi-Fi Prep
- LED Lighted Power Awning
- Power Tongue Jack
- Sink Cover/Dish Drying Rack



The SN220VRB has a huge bathroom linen closet. All Sonics have a porcelain foot-flush toilet.



Sonics optimize the storage in every floorplan. The SN220VRB has two pantries and a large linen closet.



Skylight offers plenty of light and headroom.



Sonic features a glass-topped, flush-mounted, 3-burner cooktop with oven.



Biscayne interior, shown in SN190VRB.

Exterior Features



Power awning with LED lighting.



The Campfire Café is shown in the Sonic SN220VRB.



All Sonics feature a solid flip-up step and friction-hinged entry door with Screen Shot screen door.



SONIC LITE CONSTRUCTION



SONIC CONSTRUCTION



Sonic offers one-piece seamless fiberglass roof construction. Seamless roofing prevents potential leaks, as the water runs off the front and back with no extrusions or seams. Avoids leaks around the sidewall seams, windows, doors, compartments and corner seams. Reliable seamless construction equals long-term investment.



The handy bottle opener can also be used as a pet-friendly tie down.



Standard outside shower provides both hot and cold water.



Sonics Weather Shield features a radiant foil barrier, forced heat, enclosed underbelly, enclosed gate valves and reflective PVC roof membrane with limited 15-year warranty.



LevelMate PRO lets you level your unit on the first try! This option calculates and displays the height required to achieve a perfectly level position. An arrow is displayed to indicate where the height needs to be added, further simplifying what has traditionally been time consuming guesswork. Simply level, using the height indicated and when the red level indicator turns green, you're done!



The KZ RV app...

- ✓ Helps with trip planning
- ✓ Provides handy checklists, so you don't forget anything
- ✓ Keeps track of maintenance and service
- ✓ Sends smart notifications
- ✓ Includes digital owner's manuals
- ✓ Features brand-specific news and updates



985 N 900 W | Shpshewana, IN 46565 | www.venture-rv.com

Due to continual research and advances, manufacturer reserves the right to change specifications, design, price and equipment without notice, and assumes no responsibility for any error in this literature. Some items shown are not included as standard or optional equipment.
©2019 Venture | 1/20/20 | 30M



SONIC LITE



SONIC

Exterior Features



Power awning with LED lighting.



The Campfire Café is shown in the Sonic SN220VRB.



All Sonics feature a solid flip-up step and friction-hinged entry door with Screen Shot screen door.



SONIC LITE CONSTRUCTION



SONIC CONSTRUCTION



Sonic offers one-piece seamless fiberglass roof construction. Seamless roofing prevents potential leaks, as the water runs off the front and back with no extrusions or seams. Avoids leaks around the sidewall seams, windows, doors, compartments and corner seams. Reliable seamless construction equals long-term investment.



The handy bottle opener can also be used as a pet-friendly tie down.



Standard outside shower provides both hot and cold water.



Sonics Weather Shield features a radiant foil barrier, forced heat, enclosed underbelly, enclosed gate valves and reflective PVC roof membrane with limited 15-year warranty.



LevelMate PRO lets you level your unit on the first try! This option calculates and displays the height required to achieve a perfectly level position. An arrow is displayed to indicate where the height needs to be added, further simplifying what has traditionally been time consuming guesswork. Simply level, using the height indicated and when the red level indicator turns green, you're done!



The KZ RV app...

- ✓ Helps with trip planning
- ✓ Provides handy checklists, so you don't forget anything
- ✓ Keeps track of maintenance and service
- ✓ Sends smart notifications
- ✓ Includes digital owner's manuals
- ✓ Features brand-specific news and updates



SONIC LITE



SONIC



985 N 900 W | Shipshewana, IN 46565 | www.venture-rv.com

Due to continual research and advances, manufacturer reserves the right to change specifications, design, price and equipment without notice, and assumes no responsibility for any error in this literature. Some items shown are not included as standard or optional equipment. ©2019 Venture | 1/20/20 | 30M