

SPORTSCOACH



SportscoachRV.com



A LUXURY COACH, INSIDE AND OUT.

WHEN NOT TAKING IN BREATHTAKING VIEWS FROM THE GREAT OUTDOORS, FEAST YOUR EYES ON THE REMARKABLE INTERIOR VIEWS OF THE SPORTSCOACH – THE MOST AFFORDABLE DIESEL ON THE MARKET.



Whether you're preparing a meal or watching your favorite sporting event, Sportscoach has it all. From its tastefully appointed kitchen to the interior and exterior LED TVs, you'll want to show it off. A spacious pantry keeps all your supplies within reach.

Each floorplan is beautifully outfitted with tile flooring throughout, and prepped and ready for a washer and dryer so you'll always have fresh laundry.

The cockpit dash console includes LED lighting around cupholders and gauges for easier nighttime navigation.



With a 360HP ISB Cummins rear diesel engine and a 6-speed Allison 3,000 MH automatic transmission, Sportscoach gets 800 lbs./ft. of torque and has a 10,000 pound towing capacity.

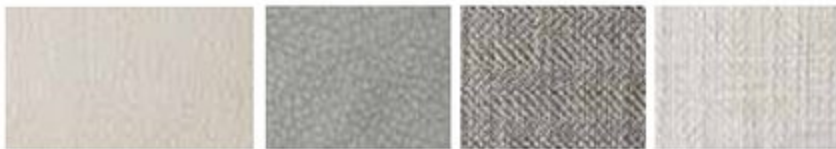
Storage is plentiful in Sportscoach, including a pass-through full basement that's ideal for stowing oversized gear without compromising living space.

Sportscoach comes fully-equipped with an outdoor entertainment system, including an exterior LED TV.

The generator is mounted on a slide system for ease of maintenance.



INTERIOR DÉCOR COLOR SELECTIONS



Glacier



Mojave



Superior

INTERIOR WOOD COLOR SELECTIONS



White Velvet

Sumatra

Chocolate Cherry

EXTERIOR COLOR OPTIONS



Full Body Paint - Flying Spur



Full Body Paint - Bentayga



Full Body Paint - Mulliner



Full Body Paint - Continental



Photography features the Sportscoach RD 402TS floorplan with Mojave interior and Sumatra cabinetry.



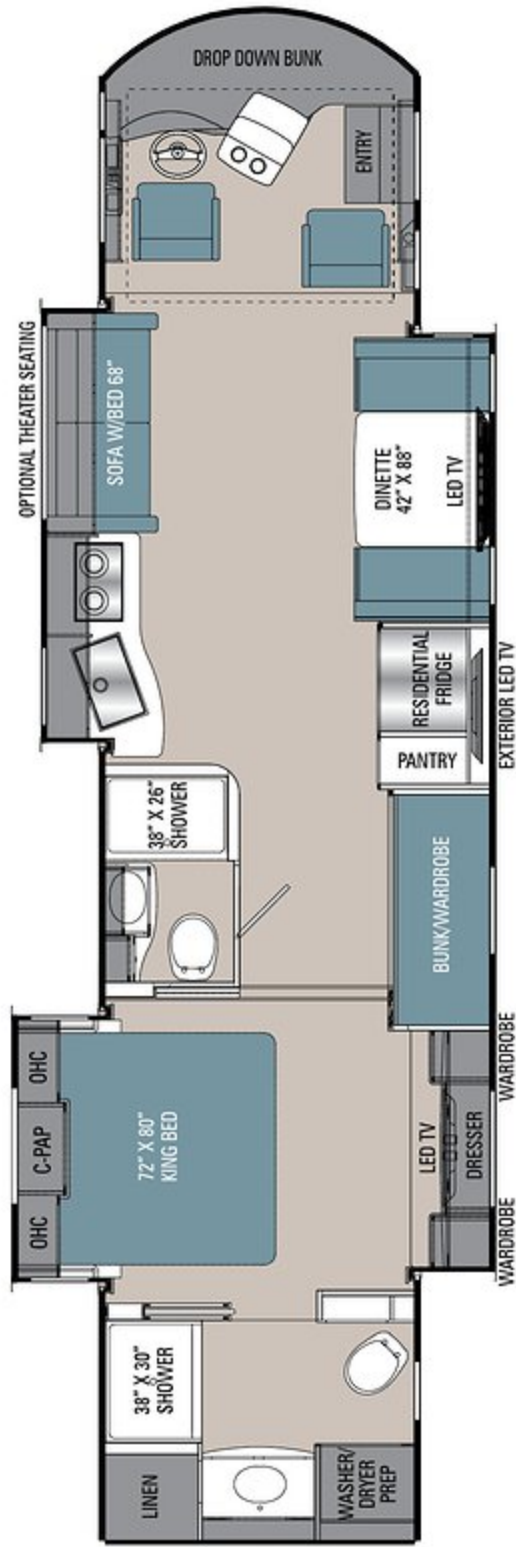
In the bedroom you'll find a king mattress with an elegant designer headboard, spacious wardrobe and an LED TV. The Coach-Pap™ Station allows for storage of CPAP machines and other electronics, located in the cabinet above the bed.

The 402TS floorplan is one of few motorhomes to include two full bathrooms, both with stainless steel and porcelain touches making them easy to clean.

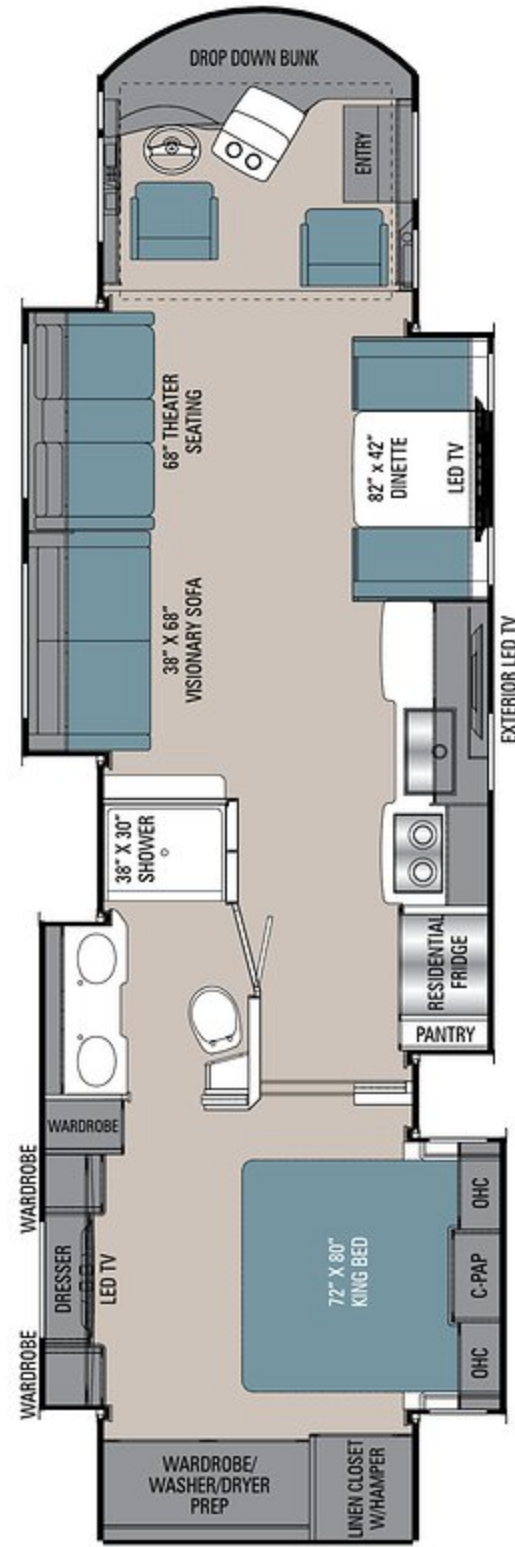
The versatile bunk/wardrobe area allows you to have two bunks when you need more sleeping room, or easily convert the area to a wardrobe when more storage is needed.

FLOORPLANS

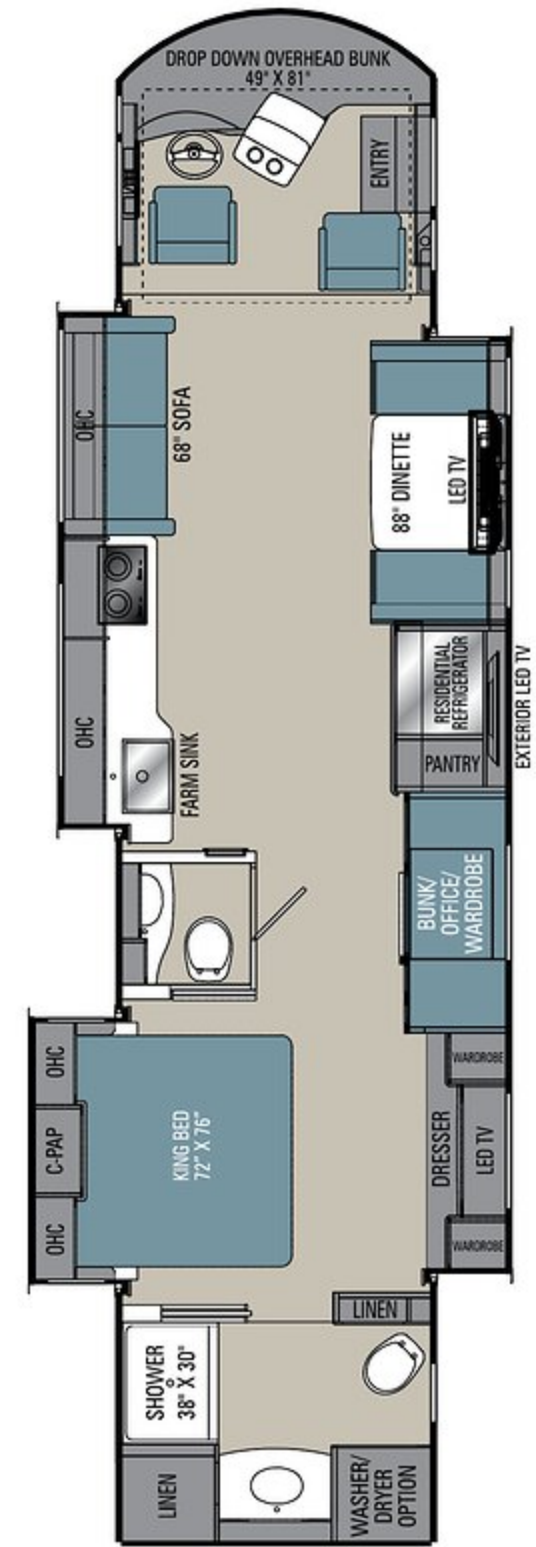
Sportscoach RD includes three floorplan options, so you'll have no trouble choosing the one that suits you perfectly.



402TS



403QS



410ES

SPORTSCOACH RD SPECIFICATIONS

CLASS A DIESEL	402TS	403QS	410ES
CUMMINS ISB 6.7L ENGINE	360 HP@2600 RPM	360 HP@2600 RPM	360 HP@2600 RPM
ALLISON TRANSMISSION	3000MH	3000MH	3000MH
WHEEL BASE	266"	266"	266"
GVWR	32,000 lbs	32,000 lbs	32,000 lbs
GCWR	42,000 lbs	42,000 lbs	42,000 lbs
GAWR FRONT	12,000 lbs	12,000 lbs	12,000 lbs
GAWR REAR	20,000 lbs	20,000 lbs	20,000 lbs
FUEL CAPACITY	100 gal	100 gal	100 gal
LP GAS CAPACITY	20 gal	20 gal	20 gal
FURNACE (BTUs)	(2) 20,000	(2) 20,000	(2) 20,000
EXTERIOR LENGTH (w/o Ladder)	41' 1"	41' 1"	41' 1"
EXTERIOR HEIGHT (w/A/C)	12' 10"	12' 10"	12' 10"
EXTERIOR WIDTH	102"	102"	102"
FRESH WATER	89 gal	89 gal	89 gal
GREY WATER	(2) 52 gal	52 gal	(2) 52 gal
BLACK WATER	52 gal	52 gal	52 gal
WATER HEATER	10 gal	10 gal	10 gal
AWNING SIZE	18'	17'	17'
TOW HITCH	10,000 lbs	10,000 lbs	10,000 lbs

GVWR (Gross Vehicle Weight Rating) is the maximum permissible weight of the unit when fully loaded. It includes all weights, inclusive of all fluids, occupants, cargo, optional equipment and accessories. For safety and product performance do NOT exceed the GVWR.

GCWR (Gross Combined Weight Rating) is the maximum permissible loaded weight of your motor home and any towed trailer or towed vehicle. Actual GCWR of this vehicle may be limited by the sum of the GVWR and the installed hitch receiver maximum capacity rating; see hitch rating label for detail.

GAWR (Gross Axle Weight Rating) is the maximum permissible weight, including cargo, fluids, optional equipment and accessories that can be safely supported by each axle.

UVW (Unloaded Vehicle Weight) * is the typical weight of the unit as manufactured at the factory. It includes all weight at the unit's axle(s), including full fuel, all fluids and LP Gas. The UVW does not include cargo, fresh potable water, additional optional equipment or dealer installed accessories.

*Estimated Average based on standard build optional equipment.

CCC (Cargo Carrying Capacity) ** is the amount of weight available for fresh potable water, cargo, passengers, additional optional equipment and accessories. CCC is equal to GVWR minus UVW. Available CCC should accommodate fresh potable water (8.3 lbs per gallon). Before filling the fresh water tank, empty the black and gray tanks to provide for more cargo capacity.

** Estimated average based on standard build optional equipment

Each Coachmen motorhome is weighed at the manufacturing facility prior to shipping. A label identifying the unloaded vehicle weight of the actual unit and the cargo carrying capacity is applied to every Coachmen motorhome prior to leaving our facilities.

The load capacity of your unit is designated by weight, not by volume, so you cannot necessarily use all available space when loading your unit.

Actual towing capacity is dependent upon your particular loading and towing circumstances, which includes the GVWR, GAWR and GCWR as well as adequate trailer brakes. Please refer to the Operator's Manual of your vehicle for further towing information.

All information contained in this brochure is believed to be accurate at the time of publication. However, during the model year, it may be necessary to make revisions and Coachmen reserves the right to make all such changes without notice, including prices, colors, materials, equipment and specifications as well as the addition of new models and the discontinuance of models shown in this brochure. Therefore, please consult with your Coachmen dealer and confirm the existence of any materials, design or specifications that are material to your purchase decision. 4/21

©Copyright 2021 Sportscoach RV a Division of Forest River Inc. - All Rights Reserved.

STANDARD FEATURES

INTERIOR APPOINTMENTS

Padded Vinyl Ceiling
Flat Panel Hardwood Cabinet Doors Throughout
Self Closing Ball Bearing Drawer Guides Throughout
Solid Surface Countertop in Galley
Brushed Nickel Hardware and Fixtures
Manual Side Shades in Driver - Passenger Area
6-Way Power Driver Seat with 3-Point Seat Belt
6-Way Power Passenger Seat with 3-Point Seat Belt
Solar Privacy Shades Throughout
Power Theater Seating (403QS)
Electric Step Cover
Visionary Sofa Hide-A-Bed
Dream Dinette
Storage Drawers Under Booth Dinette
Power Front Solar Privacy Shade
Upgraded Porcelain Tile Throughout
Fireplace(403QS Only)

INTERIOR EQUIPMENT

50" LCD TV Coach
Sound Bar Entertainment System
King Jack TV - Radio Antenna
Pre-Wired for Satellite Dish and Blu-ray Players
10" Touch Screen Radio AM/FM Radio
with Bluetooth Apple CarPlay and Android Auto Link Enabled
Dual Mirror Technology and Camera Monitor

GALLEY

2-Burner Induction Cook Top
30" Stainless Steel OTR Convection Microwave
Kitchen Pantry Closet
Stainless Steel 18 Cubic Foot Residential Refrigerator
Kitchen Back Splash
Fantastic Power Ceiling Vent
Solid Surface Sink Covers
Large Stainless Steel Farmhouse Sink
Pop-up Recept with USB Ports

BATH AND WATER

Whole Coach Water Filter
Single Pedal Porcelain Toilet with Sprayer
Deluxe Fiberglass Shower
Textured Glass Shower Door
Power Bath Vent
Skylight Over Shower
Winterization INLET at termination compartment
Water Pump Switch at Termination
Black Tank Flush System
Demand Water Pump
10-Gallon Gas/Electric Water Heater (403QS)
10-Gallon XT Gas/Electric Water Heater (402TS, 410ES)
Systems Monitor Panel
Washer/ Dryer Ready

SLEEPING

King 72X80
Bedsread, Pillows with Shams
Residential Style Headboard
LCD TV Bedroom
USB Ports on Both Sides of Bed
Front Drop-Down-Bunk
CPAP Shelf Cabinet

ELECTRICAL/HEATING/AC

50-Amp Power Cord
GFCI Circuit
Outside Receptacle (DS)
Emergency Start Switch
Coach and Chassis Battery Disconnect
Auxiliary Batteries (4)
Exterior LED Strip Patio Light
100W Solar Panel with Controller (Aftermarket Upgradeable to 265W)
(2) 20,000 BTU E.I. Furnace
15,000 BTU A/C with Heat Pump Front
15,000 BTU A/C with Heat Pump Rear
20-Gallon LP Tank
8.0 kW Diesel Generator
2000W Pure Sine Wave Inverter with 80-Amp Converter
Automatic Transfer Switch
Exterior Cable TV Jack and Tailgater Satellite Jack
LED Interior Ceiling Lighting
Auto Generator Start
Charging Station for Electronic Devices

AUTOMOTIVE/EXTERIOR

Raised Rail Freightliner Chassis
360 HP ISB Cummins Rear Diesel Engine, 800 lbs./ft. Torque
6-Speed Allison 300MH Automatic Transmission
22.5 Radial Tires with Aluminum Rims
Chassis Air Suspension and Air Brakes
New Diesel Cockpit Dash Console
Cupholders with LED Lighting at Dash
High Definition Back Up and Side Cameras
Fully Automatic Leveling Jacks
Defroster Fans
Cruise Control
Manual Air Dump
Freightliner TPMS (after Jan. 1, 2021)
Intermittent Wipers
Dash Air Conditioning
Frameless Tinted Windows with Safety Glass
Exterior Mirrors with Heat and Remote
Auxiliary Driving Lights
Fuel Fills, Both sides
Auxiliary Air Supply Hook-Ups
Front and Rear Mud Flaps
Power Entrance Steps-Double
Front Deluxe Radius Entrance Door with Dead Bolt Lock
Front and Rear Fiberglass Caps
Air Horn
High Gloss Gelcoat Sidewalls (with Azdel™ Superlite Composite)
Aluminum Side Swing Compartment Doors
10,000 lb. Towing Hitch with 7-Way Plug
Power Patio Awning with Speakers
Slide-Out Awnings
Roof Ladder
Pass Through Basement Storage
Full Body Paint
Fire Extinguisher
LP Leak Alarm
Smoke Detector
Carbon Monoxide Detector
Outside Entertainment Center with 40" TV Lighted Interior and Exterior Assist Handles
Exterior Propane Hook-Up
Oval Cockpit Pedestal Table
Full Width Rear Rock Guard "SPORTSCOACH"
Power Entry Door Awning
Exterior Bluetooth - TV Audio Speakers

OPTIONAL FEATURES

INTERIOR COLOR SELECTIONS

Glacier
Mojave
Superior

INTERIOR WOOD COLOR SELECTIONS

White Velvet
Sumatra
Chocolate Cherry

EXTERIOR COLOR SELECTIONS

Full Body Paint

- Flying Spur
- Continental
- Bentayga
- Mulliner

OPTIONAL FEATURES

Slide Out Basement Storage Tray
Power Theater Seating (402TS, 410ES)
Washer/Dryer
In-Motion Satellite
Dual Pane Windows
Solarium Skylight - Forced Option (403QS, 410ES)
Diamond Shield Protection (Required Option)
Double Clear Coat (Required Option)
CSA Up-fit
CD-MVSA (Canadian Motor Vehicle Safety Act)¹

Notes:

¹ Mandatory For All Canadian Provinces

THE COACHMEN ADVANTAGE

What is the Coachmen advantage? It's the collection of unique features offered in a Coachmen motorhome to ensure a smoother ride, a better camping experience, and a motorhome that will last for years.

1. NOBLE SELECT™

Protected by a three-year warranty, these sidewalls have a high-gloss gelcoat finish to prevent fading. They are also 20% lighter than wood substrate sidewalls, provide more occupant cargo carrying capacity, and offer three times the insulation against extreme climates.

2. AZDEL™ COMPOSITE

Most manufacturers use wood sidewalls that can expand, swell, and eventually mold. We use Azdel. It's impervious to water, won't rot or mold, and, with less than a 1% chance of delaminating, it ensures the long-term integrity of the sidewalls.

3. REINFORCED LAMINATION

We vacuum bond and pinch roll every sidewall, floor, and roof, then perform a pull adhesion test. Most manufacturers just do one process or the other, but by doing both we improve the strength and longevity of the sidewalls.

4. FOREFRONT OF TECHNOLOGY

We offer the latest in technology by pairing electronics with smart phones. A safer and larger viewing area is achieved when dual-mirroring your smart phone GPS to the 10" Axxera dash radio and backup system. Play your favorite songs from your favorite apps through our 4-channel 500 watt bluetooth amplifier.

5. SIGHT RITE DASH™

Our dashes are angled 20 degrees forward. This increases the line of sight for the driver, and offers the best road visibility on the market.

6. EVEN COOL DUCT™

Our patented duct system evenly disperses air through the whole coach. And we use Amaco ducting instead of Styrofoam because it's antimicrobial, preventing the growth of bacteria and ensuring a cool, clean coach in even scorching heat.

7. DIGITAL OWNER'S MANUAL

Our owner's manuals are easy to access through the Coachmen website or our free app. Supplemented with videos, PowerPoints, and more, it's got all you need to know about your coach.



SCAN HERE

To see available
Standards, Options
and Features!



Sportscoach RV, a Division of Forest River, Inc.,
A Berkshire Hathaway Company

423 N. Main St., P.O. Box 30, Middlebury, IN 46540

To learn more about Sportscoach RV and our products and see how Sportscoach is making the easy life easier, visit www.sportscoachrv.com

CUSTOMER SATISFACTION



www.ForestRiverBuyLocal.com



**24/7 EMERGENCY
ROADSIDE ASSISTANCE
WITH VEHICLE PURCHASE***

TOWING	WINCH-OUT
JUMP-STARTS	MOBILE MECHANIC
TIRE CHANGES	TECHNICAL
FLUID DELIVERY	SUPPORT
LOCKOUT SERVICE	DEALER LOCATOR SERVICES



*VALID FOR 1 YEAR FROM DATE OF PURCHASE



Learn More
Scan this barcode using
a QR Reader on your
smart phone to learn
more about Forest River.



A Berkshire Hathaway company.