

SANDSTORM 2021

SANDSTORM

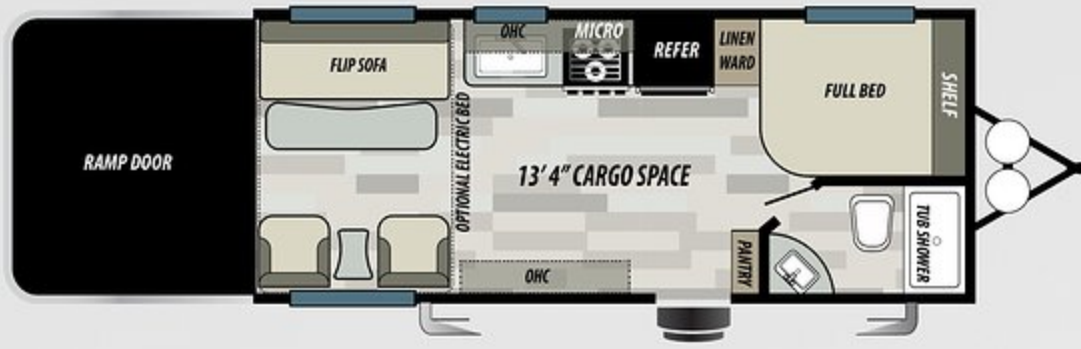
TOY HAULERS



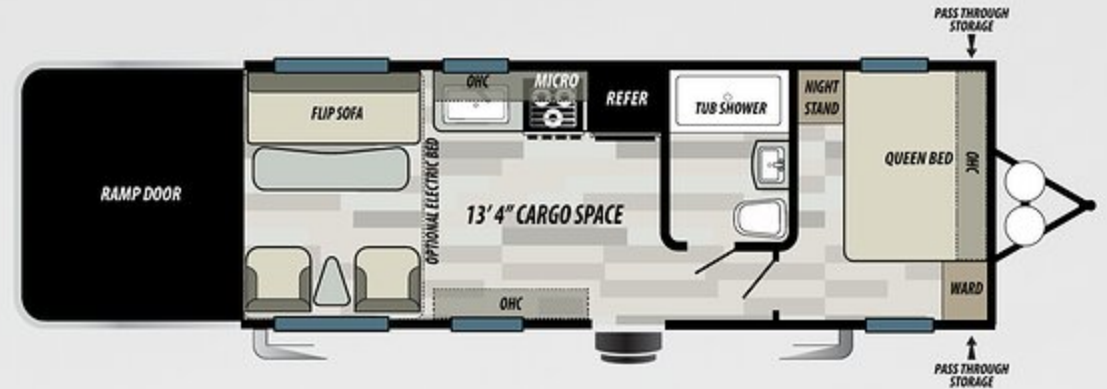
TRAVEL TRAILERS



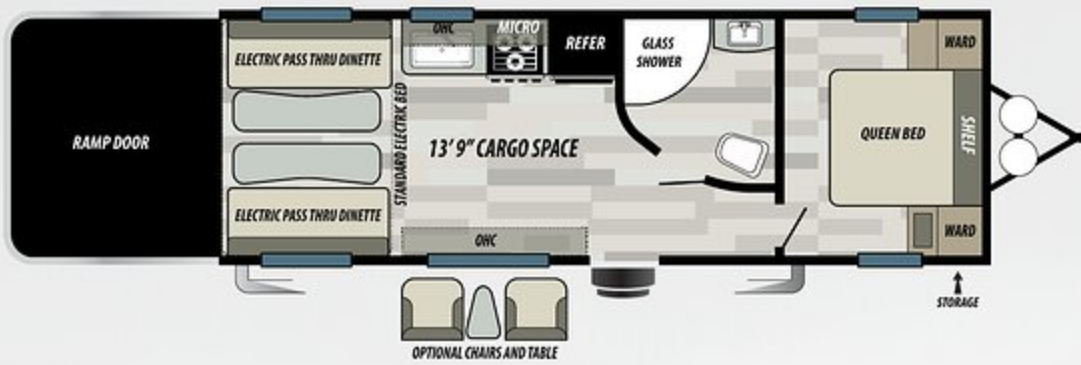
304GSLR



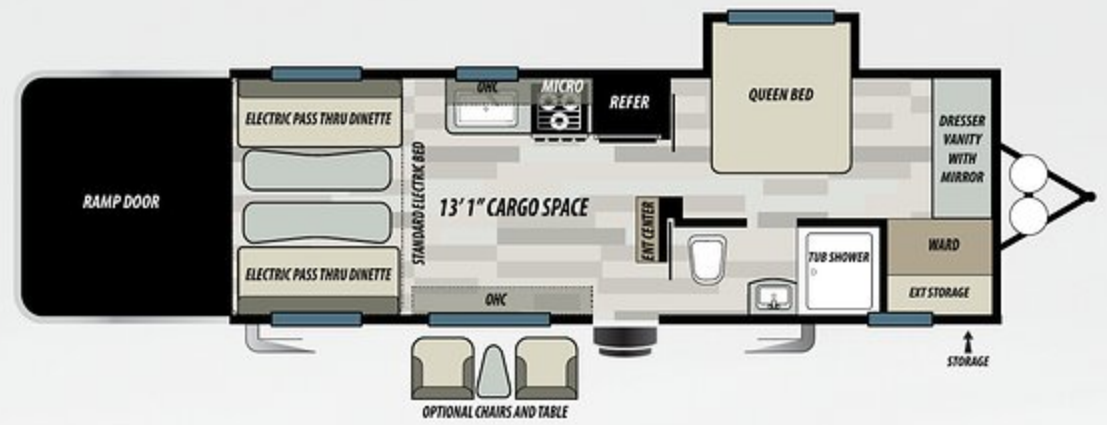
181SLC



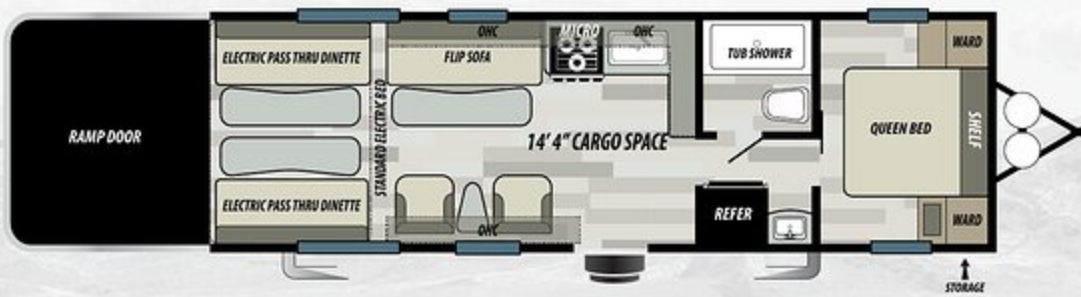
211SLC



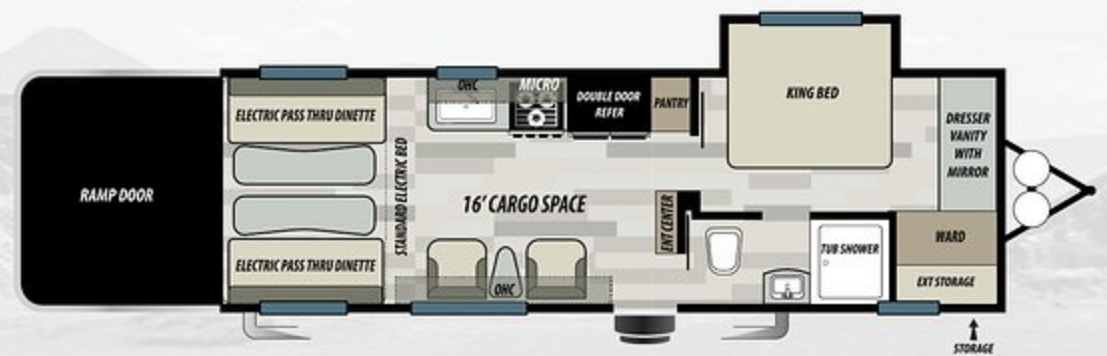
242SLC/242GSLC



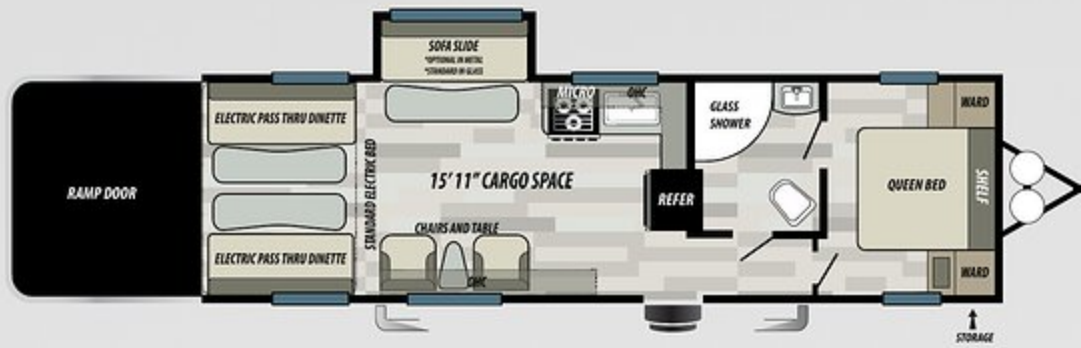
245GSLC



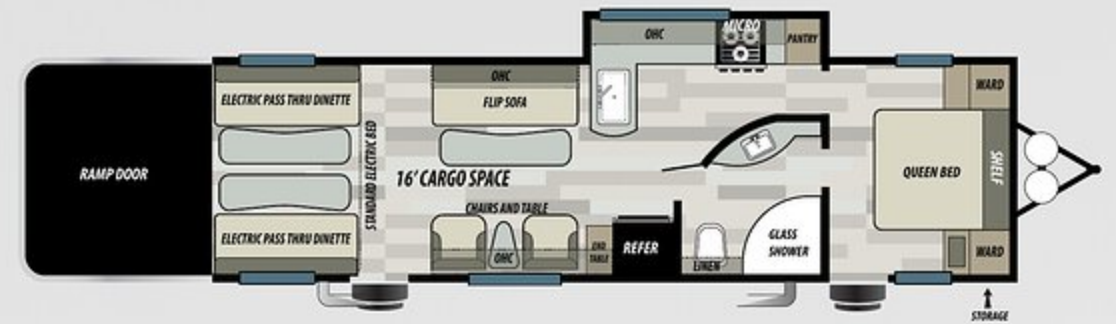
251SLC/251GSLC



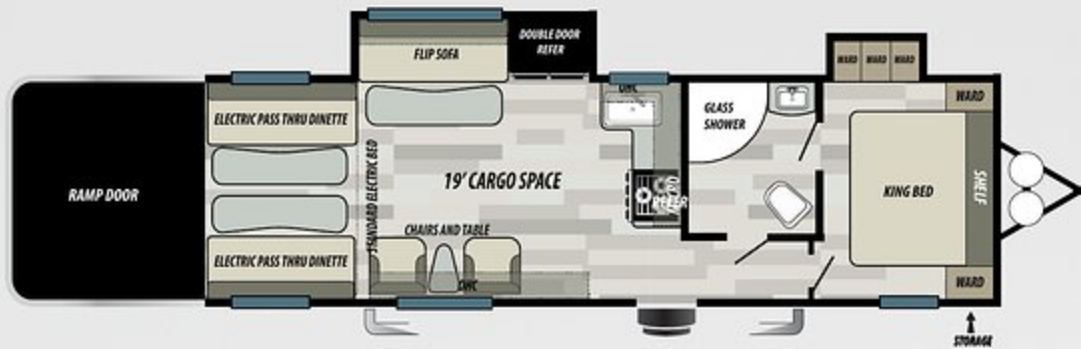
265GSLR



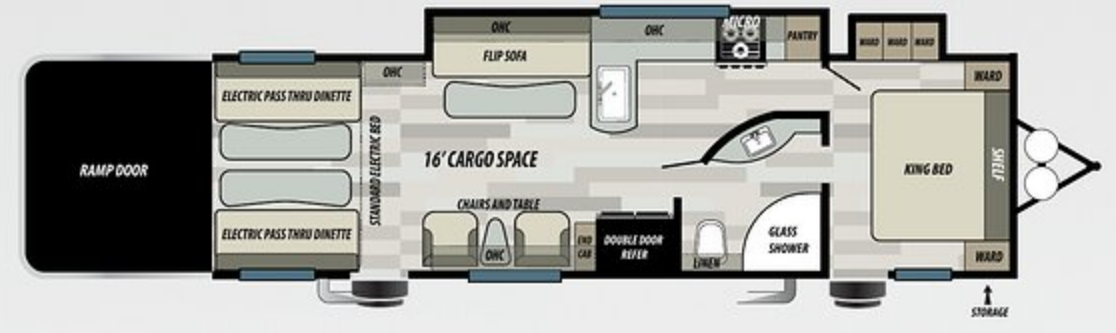
272SLC/271GSLR



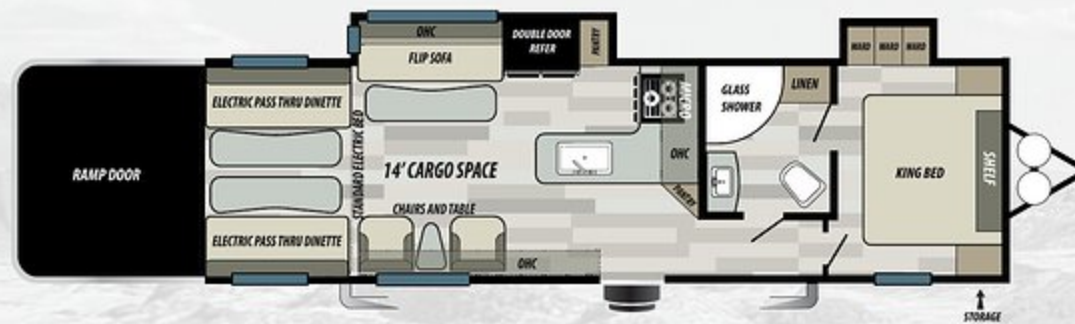
291SLC/293GSLR



302GSLR



304GSLR



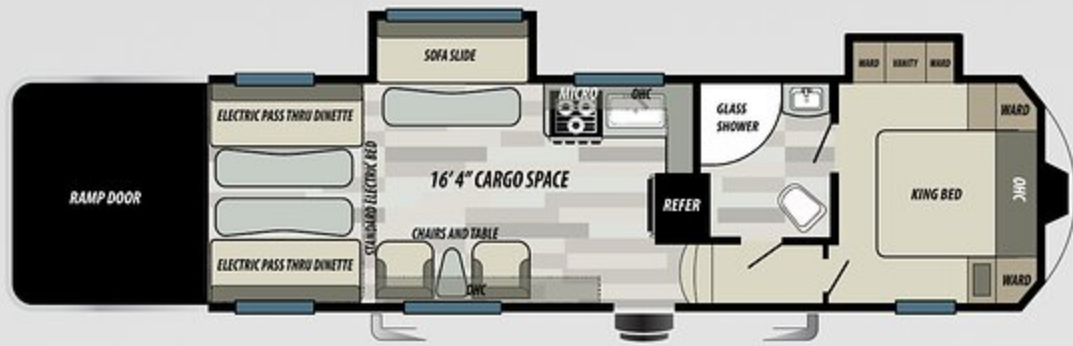
313GSLR

FIFTH WHEELS

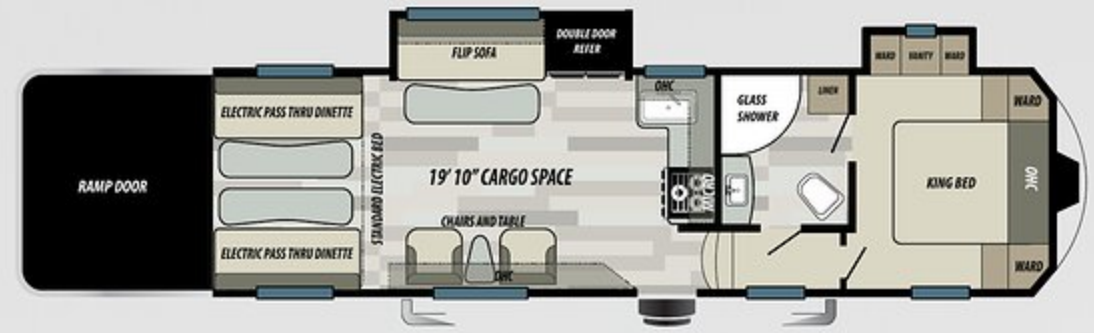




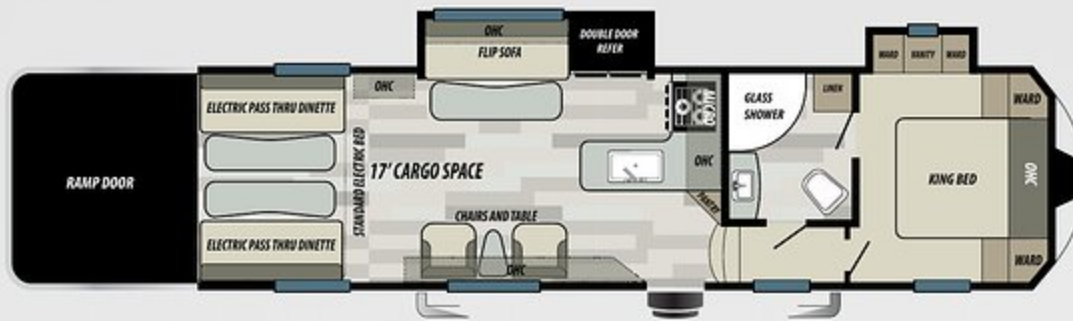
326GSLR



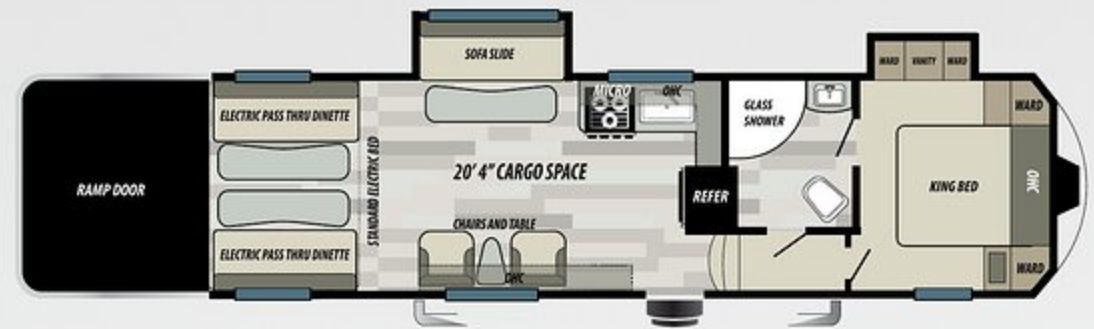
286GSLR



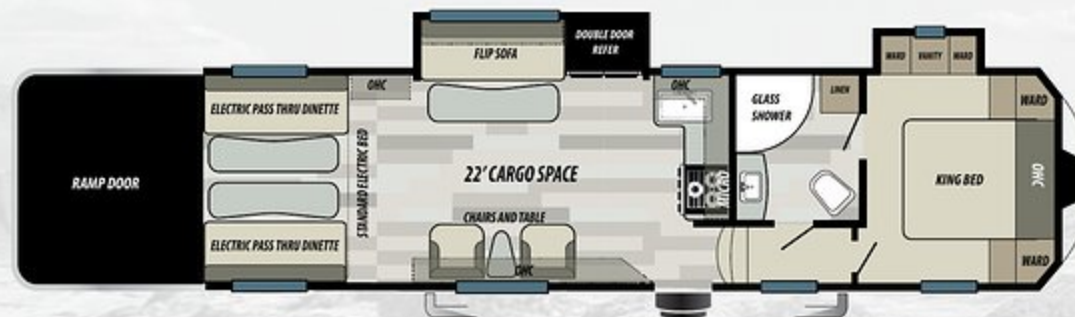
306GSLR



326GSLR



336GSLR



346GSLR

FIFTH WHEEL STANDARDS

5.5K ONAN GEN W/ 2ND A/C PREP
 FUEL STATION (35 GALLON)
 HEATED & ENCLOSED TANKS
 WIDE BODY CONSTRUCTION (102")
 GREY ALUMA-WALL FIBERGLASS EXTERIOR
 SOFA SLIDE W/ FLIP FLOOR
 LARGE BAY WINDOW W/ CHAIRS
 140 GAL FRESH WATER
 GREY 3,000 LB RAMP DOOR W/ BLACK SPOILER
 POWER TONGUE JACK
 FRICTION HINGE ENTRY DOOR
 1,200 LB BLACK TIE DOWNS MOUNTED TO STEEL
 MAGNETIC BAG DOOR LATCHES
 220 W SOLAR POWER & REGULATOR W/ POWER BOOST
 22" CHEF'S OVEN W/RECESSED GLASS TOP
 STAINLESS STEEL APPEARANCE APPLIANCES
 RAMP DOOR PATIO CABLE KIT
 LG SOLID SURFACE KITCHEN COUNTERTOP W/ LED LIGHT
 2 - 30 LB LP BOTTLES W/ COVER
 3 BURNER COOK TOP W/ COVER
 BATTERY DISCONNECT
 USB CHARGING PORTS THROUGHOUT

KENWOOD AUDIO W/ DVD, AMP, & 4 SPEAKERS
 BATHROOM SKYLIGHT
 SEWER HOSE CARRIER
 BEAVER TAIL FLOOR (PER F/P)
 BLACK FRAME TINTED SAFETY GLASS WINDOWS
 UNDERMOUNT SINGLE BOWL CHEF'S SINK W/ LIDS
 NEW BLACK CHEF'S HIGH-RISE SPRING FAUCET
 13.5K BTU DUCTED AIR CONDITIONER
 LED CLEARANCE & BRAKE LIGHTS
 30,000 BTU DUCTED HEAT THROUGHOUT
 KENWOOD EXTERIOR SPEAKERS (2)
 16" RADIAL TIRES W/ ALUMINUM RIMS (4)
 FRONT GRAVEL GUARD
 10 GAL QUICK RECOVERY G/E DSI WATER HEATER (DUAL FUEL)
 FULLY INSULATED 2" FLOOR W/ 5/8" T&G PLYWOOD
 8 CU FT G/E DOUBLE DOOR REFER (286 & 336)
 12.3 CU FT G/E DOUBLE DOOR REFER (306, 326, 346)
 WAINSCOTING W/ TRIM IN CARGO
 KITCHEN & BATH CROWN MOLDING
 BLACK NIGHT SHADES THROUGHOUT
 LIGHTED STORAGE COMPARTMENT
 PORCELAIN FOOT FLUSH TOILET
 DUMP STATION LED LIGHT

KITCHEN BACKSPLASH
 DOUBLE ROW LED CEILING LIGHTS
 LED INTERIOR & ACCENT LIGHTING
 THERMA FOIL TABLE & LAVY TOPS
 POWER AWNING W/ LED LIGHT & ADJUSTABLE LEGS
 1.6 CU FT MICROWAVE
 ONE PIECE SEAMLESS WALK ON PVC ROOF
 OUTSIDE SHOWER
 RAMP DOOR BAR LIGHT
 REAR RADIUS CARGO DOOR W/ 3,000 LB RATING
 RESIDENTIAL 72" X 80" KING BED PILLOW TOP MATTRESS
 BAR STYLE SCARE LIGHT & PORCH LIGHT
 GLASS CABINET INSERTS IN KITCHEN AND BEDROOM
 CEILING FAN W/ ACCENT MEDALLION
 NEW WIFI PREP
 7 WAY POWER CORD HOLSTER
 ELECTRIC BED W/PASS THROUGH DINETTE
 FLIPPED 6,000 OR 7,000 LB SUPER LUBE AXLES & SELF ADJUSTING BRAKES
 STABILIZER JACKS
 OMNI DIRECTIONAL TV ANTENNA
 TRASH CAN STORAGE
 STANDARD GLASS SHOWER
 POWER STABILIZER JACK

COMFORT AND CONVENIENCE PACKAGE

ADD-A-WALL
 ENTRY SWING AWAY HANDLE
 MATCHING ALUMINUM SPARE TIRE
 RETRACTABLE ROOF LADDER
 WATER HEATER BYPASS

FIFTH WHEEL OPTIONS

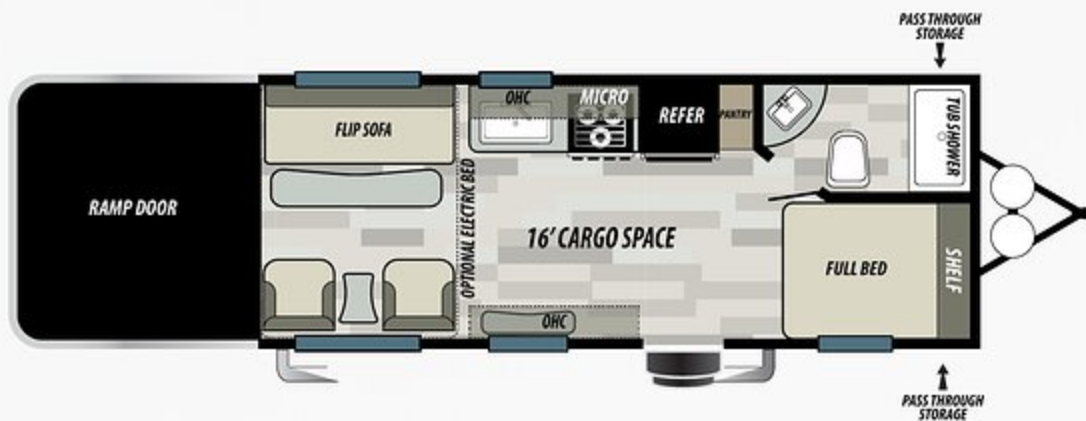
BEDROOM A/C
 1,500 WATT "GO POWER" INVERTER
 EXTRA LARGE 28" LED TV (IN BEDROOM)
 39" LED TV IN LIVING AREA W/EXT MOUNT
 CARPET KIT
 TORKLIFT GLOW ENTRY STEPS (PRIMARY ENTRY)
 3 SEASON GLASS PATIO DOOR (306, 326, 346)
 RAMP DOOR PLAYPEN
 TOUGH PLY FLOORING
 TOYLOK DOOR SIDE
 ADDITIONAL 220W SOLAR PANEL
 ARCTIC PACKAGE - RADIANT FOIL INSULATION FLOOR & ROOF
 MAXX AIR FAN (KITCHEN)

	286GSLR	306GSLR	326GSLR	336GSLR	346GSLR
HITCH WEIGHT (LBS.)	2,210	2,416	2,616	2,458	2,604
GROSS VEHICLE WEIGHT RATING (LBS.)	14,210	14,999	14,999	14,999	14,999
UNLOADED VEHICLE WEIGHT (LBS.)	9,602	10,894	11,032	9,916	11,016
CARGO CARRYING CAPACITY (LBS.)	4,570	4,105	3,967	50,045	3,983
EXTERIOR LENGTH (FT.)	32' 6"	36' 5"	37' 10"	36' 6"	39' 3"
EXTERIOR HEIGHT (FT.)	13' 4"	13' 4"	13' 4"	13' 4"	13' 4"
FRESH WATER (GAL.)	140	140	140	140	140
GREY WATER (GAL.)	65	65	65	65	65
BLACK WATER (GAL.)	40	40	40	40	40

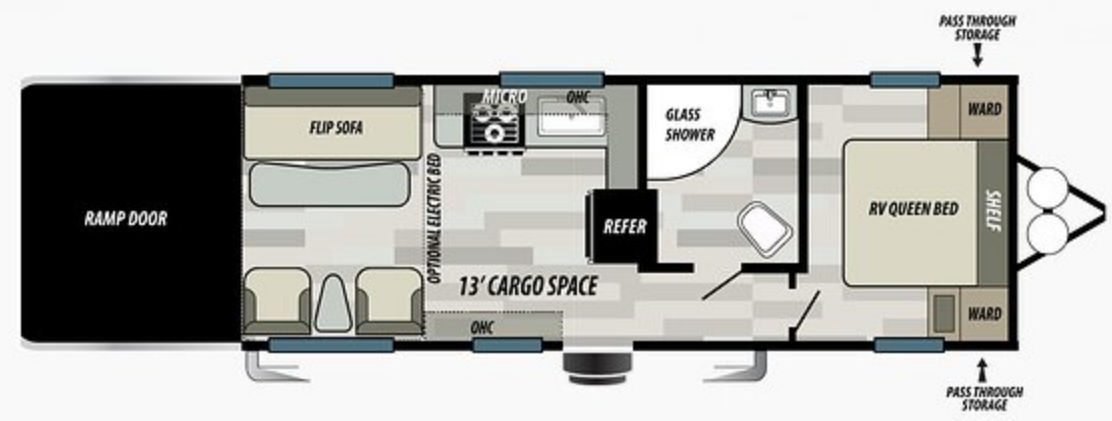
SPORT SERIES



186 SPORT



186 SPORT



241 SPORT

SPORT SERIES STANDARDS

- HEATED & ENCLOSED TANKS
- WATER HEATER BYPASS
- RV QUEEN MATTRESS (241 MAIN BED)
- 80 GAL FRESH WATER
- DUCTED 13.5 BTU AIR CONDITIONER
- 3 BURNER COOK TOP WITH GLASS FRONT 17" OVEN
- 2 CHAIRS WITH 1 SOFA & TABLE
- 6 GAL G/E DSI WATER HEATER
- POWER AWNING W/ LED LIGHT STRIP
- FULL LENGTH WALK ON ROOF
- ONE PIECE SEAMLESS PVC ROOF
- DRIVE ON WHEEL WELL (DOORSIDE)
- 102" WIDE BODY CONSTRUCTION W/ 8" I-BEAM
- 3,000 LB GREY RADIUS RAMP DOOR
- 1,200 LB TIE DOWNS MOUNTED TO STEEL
- 5,100 LB AXLES W/ SELF ADJUSTING BRAKES

- 2- 20 LB LPG BOTTLES W/ COVER
- BLACK STEEL WHEELS
- COLORED METAL FRONT WRAP
- LED INTERIOR LIGHTS
- BLACK CHEF'S HIGH-RISE SPRING FAUCET
- 30,000 BTU DUCTED FURNACE
- FOOT FLUSH TOILET
- SAFETY GLASS WINDOWS
- CONTROL PANEL
- RADIUS GLASS SHOWER WITH SURROUND (241)
- BATTERY DISCONNECT
- STORAGE SHELF OVER PRIMARY BED
- REAR SPOILER
- MIRRORED MEDICINE CABINET
- DESIGNER SPORT SERIES FURNITURE
- RADIUS EDGE THERMO FOIL COUNTERTOPS
- 8 CU FT DOUBLE DOOR REFER

SPORT SERIES OPTIONS

- RAMP DOOR PATIO CABLE KIT
- DUAL 30 LB LP BOTTLES (IPO 20 LB)
- A/C 15,000 BTU UPGRADE
- RETRACTABLE ROOF LADDER
- ARCTIC PACKAGE - RADIANT FOIL INSULATION FLOOR & ROOF
- 170W SOLAR PANEL W/REGULATOR

SPORT SERIES ENTERTAINMENT PACK

- BLUETOOTH STEREO W/ INTERIOR & EXTERIOR SPEAKERS
- TV ANTENNA W/ BOOSTER
- ELECTRIC CHARGING STATIONS

	186	241
HITCH WEIGHT (LBS.)	760	871
GROSS VEHICLE WEIGHT RATING (LBS.)	9,999	9,999
UNLOADED VEHICLE WEIGHT (LBS.)	5,850	6,251
CARGO CARRYING CAPACITY (LBS.)	4,149	3,748
EXTERIOR LENGTH (FT.)	25' 10"	29' 10"
EXTERIOR HEIGHT (FT.)	12' 1"	12' 1"
FRESH WATER (GAL.)	80	80
GREY WATER (GAL.)	40	40
BLACK WATER (GAL.)	35	40



FREE MEMBERSHIP
to Forest River Owners' Group

www.forestriverfrog.com



Learn More
Scan this barcode using
a QR Reader on your
smart phone to learn
more about Forest River.



A Berkshire Hathaway company.

FOREST RIVER INC., 255 S PEPPER AVE RIALTO, CA 92376 | (909) 873-3777
WWW.FORESTRIVERINC.COM/SANDSTORM | WWW.FORESTRIVERACCESSORIES.COM
EFFECTIVE UNITS BUILT AFTER 3/1/2020

YOUR SANDSTORM DEALER



www.ForestRiverBuyLocal.com

Specification Definitions

GVWR (Gross Vehicle Weight Rating) - is the maximum permissible weight of the unit when fully loaded. It includes all weights, inclusive of all fluids, cargo, optional equipment and accessories. For safety and product performance do NOT exceed the GVWR.

GAWR (Gross Axle Weight Rating) - is the maximum permissible weight, including cargo, fluids, optional equipment and accessories that can be safely supported by a combination of all axles.

UVW (Unloaded Vehicle Weight)* - is the typical weight of the unit as manufactured at the factory. It includes all weight at the unit's axle(s) and tongue or pin and LP Gas. The UVW does not include cargo, fresh potable water, additional optional equipment or dealer installed accessories.

*Estimated average based on standard build optional equipment.

All information contained in this brochure is believed to be accurate at the time of publication. However, during the model year, it may be necessary to make revisions and Forest River, Inc., reserves the right to make all such changes without notice, including prices, colors, materials, equipment and specifications as well as the addition of new models and the discontinuance of models shown in this brochure. Therefore, please consult with your Forest River dealer and confirm the existence of any materials, design or specifications that are material to your purchase decision. Litho. U.S.A. FOR 1420 P/W: 2020.3.1

Desert photo by Jared Verdi

CCC (Cargo Carrying Capacity)** - is the amount of weight available for fresh potable water, cargo, additional optional equipment and accessories. CCC is equal to GVWR minus UVW. Available CCC should accommodate fresh potable water (8.3 lbs per gallon). Before filling the fresh water tank, empty the black and gray tanks to provide for more cargo capacity.
** Estimated average based on standard build optional equipment

Each Forest River RV is weighed at the manufacturing facility prior to shipping. A label identifying the unloaded vehicle weight of the actual unit and the cargo carrying capacity is applied to every Forest River RV prior to leaving our facilities. The load capacity of your unit is designated by weight, not by volume, so you cannot necessarily use all available space when loading your unit.