

# FUEL

BY HEARTLAND

FIFTH WHEELS and TRAVEL TRAILERS



FUEL YOUR RV PASSION

BROUGHT TO YOU BY  
**HEARTLAND**

# FUEL

BY HEARTLAND

FIFTH WHEELS and TRAVEL TRAILERS



FUEL YOUR RV PASSION



BROUGHT TO YOU BY

HEARTLAND

## FIFTH WHEELS

### TOP 5 EXTERIOR FEATURES

1. MORryde Step Above® Exterior Steps
2. 6-Point Electric Automatic Leveling System
3. Universal Docking Station With Black Tank Flush
4. Solar Package And Prep Comes Standard
5. Azdel Sidewalls To Help Avoid Water Damage And Delamination



Fuel RVs are proudly crafted with Azdel composite sidewalls. Half the weight of wood, environmentally friendly panels lighten your load while increasing your trailer's durability and insulation value. Azdel also resists water, sound and temperature changes, keeping your living spaces comfortable and quiet.



Fuel garages are available in various lengths from 11' - 14' to fit all your toys and will include frame-welded tie down system, each one supporting up to 5,000lbs.

### TOP 5 INTERIOR FEATURES

1. King Bed Comes Standard
2. Power Drop Down Queen Bed / Opposing Sofa / Dinette Are All Available In The Garage
3. Spacious Full Garage With Frame Welded Tie Downs
4. Reclining Sofa Seating With Fold Down Center Console Featuring Cup Holders
5. 50" Living Room TV With JBL® HiFi Speakers Standard



King bed comes standard for your comfort with wireless phone charging ports located on nightstands



Entertainment kitchen and living space for friends and family. Most Fuels feature a stainless steel refrigerator, spacious countertops, 50" entertainment TV with sound bar, no carpet in the slideout, reclining sofas and wireless charging ports.



Large shower with skylight over the shower adding to the overall feeling of light and space with plenty of storage.



For more information and to take a virtual walk-through, visit [www.heartlandrvs.com](http://www.heartlandrvs.com)

## FIFTH WHEELS

### TOP 5 EXTERIOR FEATURES

1. MORryde Step Above® Exterior Steps
2. 6-Point Electric Automatic Leveling System
3. Universal Docking Station With Black Tank Flush
4. Solar Package And Prep Comes Standard
5. Azdel Sidewalls To Help Avoid Water Damage And Delamination



Fuel RVs are proudly crafted with Azdel composite sidewalls. Half the weight of wood, environmentally friendly panels lighten your load while increasing your trailer's durability and insulation value. Azdel also resists water, sound and temperature changes, keeping your living spaces comfortable and quiet.



Fuel garages are available in various lengths from 11' - 14' to fit all your toys and will include frame-welded tie down system, each one supporting up to 5,000lbs.

### TOP 5 INTERIOR FEATURES

1. King Bed Comes Standard
2. Power Drop Down Queen Bed / Opposing Sofa / Dinette Are All Available In The Garage
3. Spacious Full Garage With Frame Welded Tie Downs
4. Reclining Sofa Seating With Fold Down Center Console Featuring Cup Holders
5. 50" Living Room TV With JBL® HiFi Speakers Standard



King bed comes standard for your comfort with wireless phone charging ports located on nightstands



Entertainment kitchen and living space for friends and family. Most Fuels feature a stainless steel refrigerator, spacious countertops, 50" entertainment TV with sound bar, no carpet in the slideout, reclining sofas and wireless charging ports.



Large shower with skylight over the shower adding to the overall feeling of light and space with plenty of storage.



For more information and to take a virtual walk-through, visit [www.heartlandrvs.com](http://www.heartlandrvs.com)

Length – 38' 6"  
Height – 13' 3"  
Dry – 12,338 lbs.  
Hitch – 2,465 lbs.  
GVWR – 16,250 lbs.



Length – 41' 9"  
Height – 13' 3"  
Dry – 13,195 lbs.  
Hitch – 3,420 lbs.  
GVWR – 17,000 lbs.



Length – 40' 2"  
Height – 13' 3"  
Dry – 12,815 lbs.  
Hitch – 3,060 lbs.  
GVWR – 17,000 lbs.



Length – 43' 7"  
Height – 13' 3"  
Dry – 14,202 lbs.  
Hitch – 3,640 lbs.  
GVWR – 17,000 lbs.



FUN FOR EVERYONE

Length – 38' 6"  
Height – 13' 3"  
Dry – 12,338 lbs.  
Hitch – 2,465 lbs.  
GVWR – 16,250 lbs.



Length – 41' 9"  
Height – 13' 3"  
Dry – 13,195 lbs.  
Hitch – 3,420 lbs.  
GVWR – 17,000 lbs.



Length – 40' 2"  
Height – 13' 3"  
Dry – 12,815 lbs.  
Hitch – 3,060 lbs.  
GVWR – 17,000 lbs.



Length – 43' 7"  
Height – 13' 3"  
Dry – 14,202 lbs.  
Hitch – 3,640 lbs.  
GVWR – 17,000 lbs.



FUN FOR EVERYONE

## TRAVEL TRAILERS

### TOP 5 EXTERIOR FEATURES

1. Azdel Sidewalls To Help Avoid Water Damage And Delamination
2. I-Beam Chassis With Beaver-Tail Floor At Ramp
3. Marine Grade Plywood With Diamond Plated TPO Wrap In Garage
4. Heavy Duty Axles Dexter® E-Z Lube® Hubs And Wet Bolt Kit
5. Power Tongue Jack With Electric Stabilizer Jacks



Our Fuel RVs are proudly crafted with Azdel composite sidewalls. Half the weight of wood, environmentally friendly panels lighten your load while increasing your trailer's durability and insulation value. Azdel also resists water, sound and temperature changes, keeping your living spaces comfortable and quiet.



Our travel trailer toy hauler garages come equipped with power drop down queen beds, luxury benches and indoor/outdoor table allowing for extra seating and sleeping while providing plenty of room for your toys.

### TOP 5 INTERIOR FEATURES

1. King Bed Standard For Your Comfort With Wireless Phone Charging Ports Located On Nightstands
2. JBL® HiFi Entertainment Speakers
3. Power Drop Down Queen Bed, Cross Seat Luxury Benches In All Garages Allowing For Extra Seating And Sleeping
4. 15 BTU A/C Unit With Insulated A/C Ducting
5. Large Kitchen And Counter Space With Pressed Counter-Tops



Beautifully designed spacious kitchen with tons of counter space, solid surface countertops and 50" TV placed in optimal viewing position for the entire family.



Fuel travel trailers come standard with a king bed for your comfort and a charging port located on each nightstand for convenience.



Glass shower enclosure with skylight over the shower adds to the overall feeling of light and space with plenty of storage.



For more information and to take a virtual walk-through, visit [www.heartlandrvs.com](http://www.heartlandrvs.com)

## TRAVEL TRAILERS

### TOP 5 EXTERIOR FEATURES

1. Azdel Sidewalls To Help Avoid Water Damage And Delamination
2. I-Beam Chassis With Beaver-Tail Floor At Ramp
3. Marine Grade Plywood With Diamond Plated TPO Wrap In Garage
4. Heavy Duty Axles Dexter® E-Z Lube® Hubs And Wet Bolt Kit
5. Power Tongue Jack With Electric Stabilizer Jacks



Our Fuel RVs are proudly crafted with Azdel composite sidewalls. Half the weight of wood, environmentally friendly panels lighten your load while increasing your trailer's durability and insulation value. Azdel also resists water, sound and temperature changes, keeping your living spaces comfortable and quiet.



Our travel trailer toy hauler garages come equipped with power drop down queen beds, luxury benches and indoor/outdoor table allowing for extra seating and sleeping while providing plenty of room for your toys.

### TOP 5 INTERIOR FEATURES

1. King Bed Standard For Your Comfort With Wireless Phone Charging Ports Located On Nightstands
2. JBL® HiFi Entertainment Speakers
3. Power Drop Down Queen Bed, Cross Seat Luxury Benches In All Garages Allowing For Extra Seating And Sleeping
4. 15 BTU A/C Unit With Insulated A/C Ducting
5. Large Kitchen And Counter Space With Pressed Counter-Tops



Beautifully designed spacious kitchen with tons of counter space, solid surface countertops and 50" TV placed in optimal viewing position for the entire family.



Fuel travel trailers come standard with a king bed for your comfort and a charging port located on each nightstand for convenience.



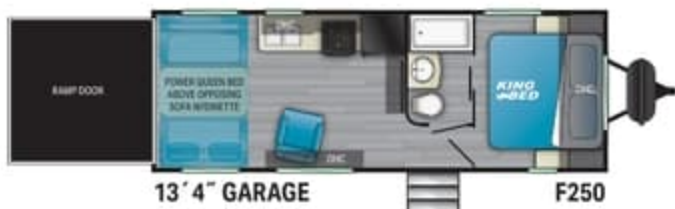
Glass shower enclosure with skylight over the shower adds to the overall feeling of light and space with plenty of storage.



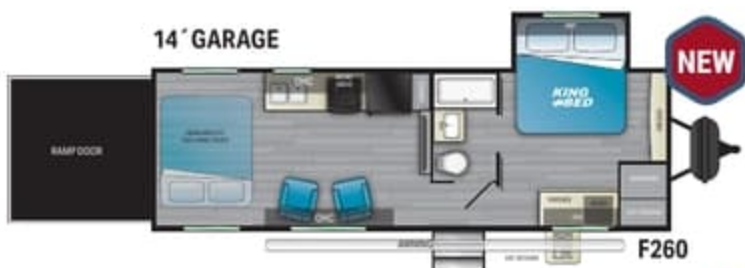
For more information and to take a virtual walk-through, visit [www.heartlandrvs.com](http://www.heartlandrvs.com)



Length – 27' 6"  
 Height – 12' 9"  
 Dry – 6,700 lbs.  
 Hitch – 820 lbs.  
 GVWR – 11,220 lbs.



Length – 30' 11"  
 Height – 12' 9"  
 Dry – 7,656 lbs.  
 Hitch – 1,242 lbs.  
 GVWR – 12,800 lbs.



Length – 30' 9"  
 Height – 12' 10"  
 Dry – 7,737 lbs.  
 Hitch – 1,225 lbs.  
 GVWR – 12,800 lbs.



Length – 36' 9"  
 Height – 12' 10"  
 Dry – 8,760 lbs.  
 Hitch – 1,400 lbs.  
 GVWR – 12,800 lbs.



Length – 35' 11"  
 Height – 12' 10"  
 Dry – 8,620 lbs.  
 Hitch – 1,380 lbs.  
 GVWR – 12,800 lbs.



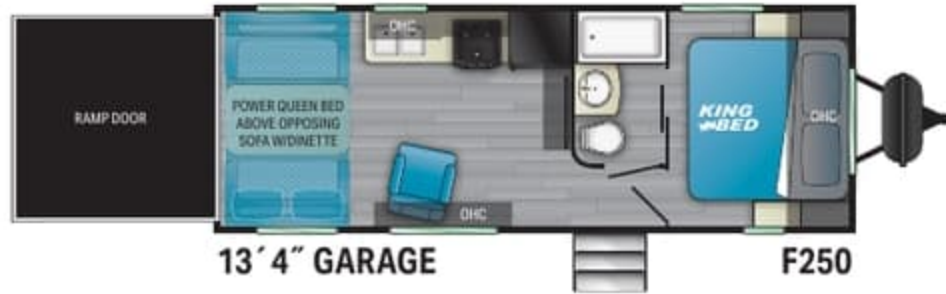
BROUGHT TO YOU BY  
**HEARTLAND**

[WWW.HEARTLANDRV.COM](http://WWW.HEARTLANDRV.COM)

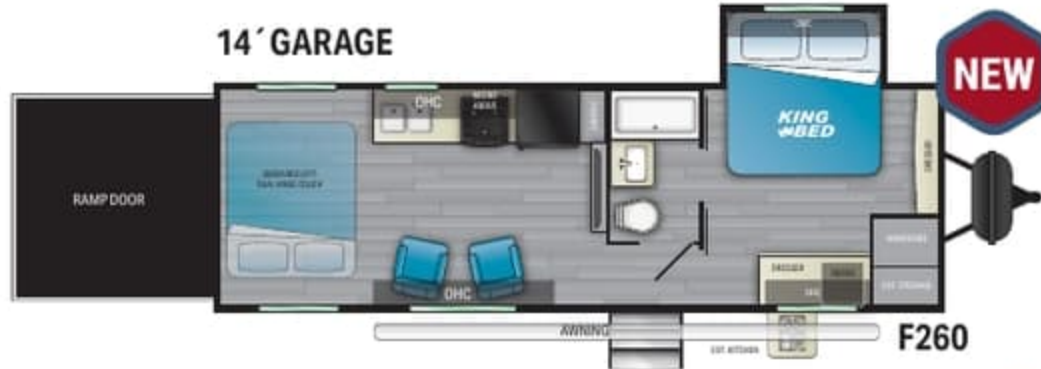


Product information is as accurate as possible as of the date of publication of this brochure. Due to Heartland's commitment to continuous product improvement, floorplans, materials, components, features, measurements, specifications, options, etc. are subject to change at any time without notice or obligation. In certain conditions some additional equipment may be needed. Photos may show optional equipment or props used for photography purposes only. Heartland has listed the approximate base weight of the trailer without the optional equipment included. Optional equipment will impact the weight of the trailer. Please locate the weight sticker attached to the trailer you are considering for the most accurate trailer weight. Tow Vehicle Caution: Owners of Heartland recreational vehicles are solely responsible for the selection and proper use of tow vehicles. All customers should consult with the motor vehicle manufacturer or their dealer concerning the purchase and use of suitable tow vehicles for Heartland products. Heartland disclaims any liability or damages suffered as a result of the selection, operation, use or misuse of a tow vehicle. Heartland's limited warranty does not cover damage to the recreational vehicle or the tow vehicle as a result of the selection of the tow vehicle. Overall length for a Fifth Wheel is defined as the body length of the trailer excluding hitch meaning bumper to cap. The overall length for a Travel Trailer is defined as the body length of the trailer including hitch, meaning bumper to hitch(pin). It does not include rear ladder of spare tire. Optional pin boxes will affect overall length.

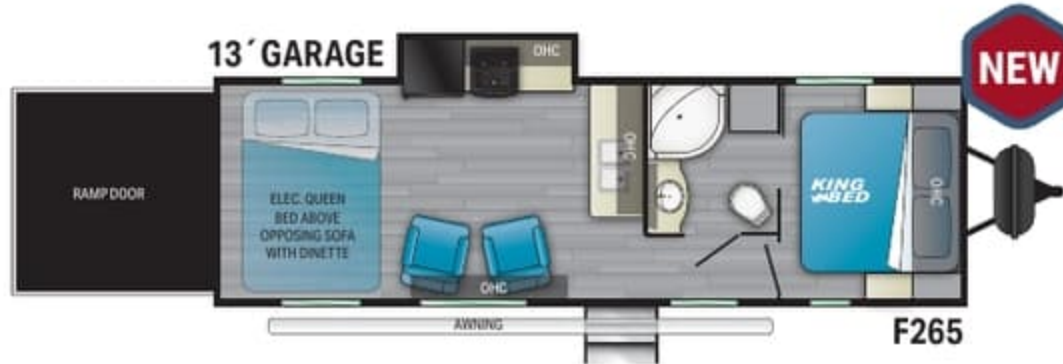
Length – 27' 6"  
 Height – 12' 9"  
 Dry – 6,700 lbs.  
 Hitch – 820 lbs.  
 GVWR – 11,220 lbs.



Length – 30' 11"  
 Height – 12' 9"  
 Dry – 7,656 lbs.  
 Hitch – 1,242 lbs.  
 GVWR – 12,800 lbs.



Length – 30' 9"  
 Height – 12' 10"  
 Dry – 7,737 lbs.  
 Hitch – 1,225 lbs.  
 GVWR – 12,800 lbs.



Length – 36' 9"  
 Height – 12' 10"  
 Dry – 8,760 lbs.  
 Hitch – 1,400 lbs.  
 GVWR – 12,800 lbs.



Length – 35' 11"  
 Height – 12' 10"  
 Dry – 8,620 lbs.  
 Hitch – 1,380 lbs.  
 GVWR – 12,800 lbs.

