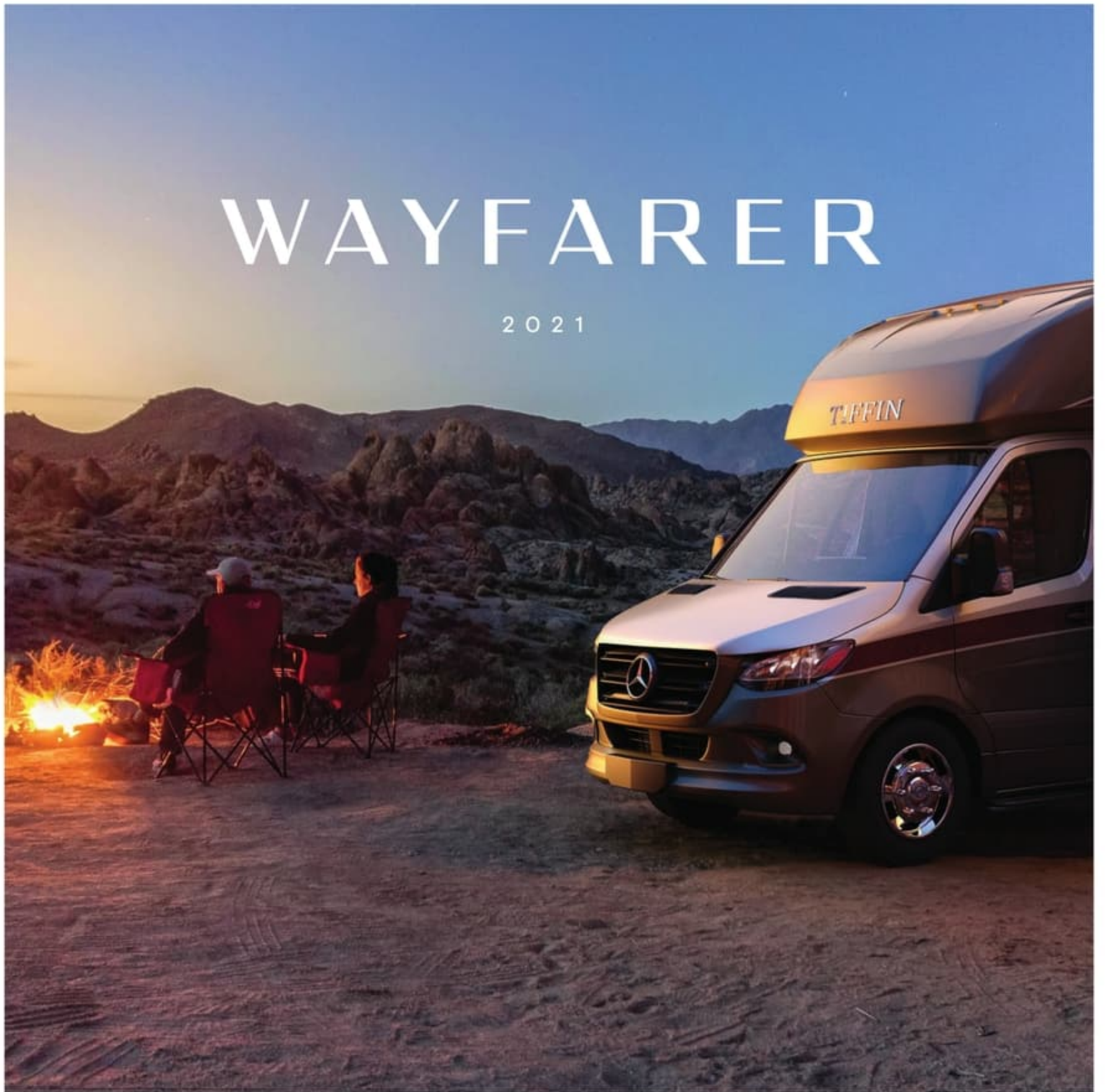


# WAYFARER

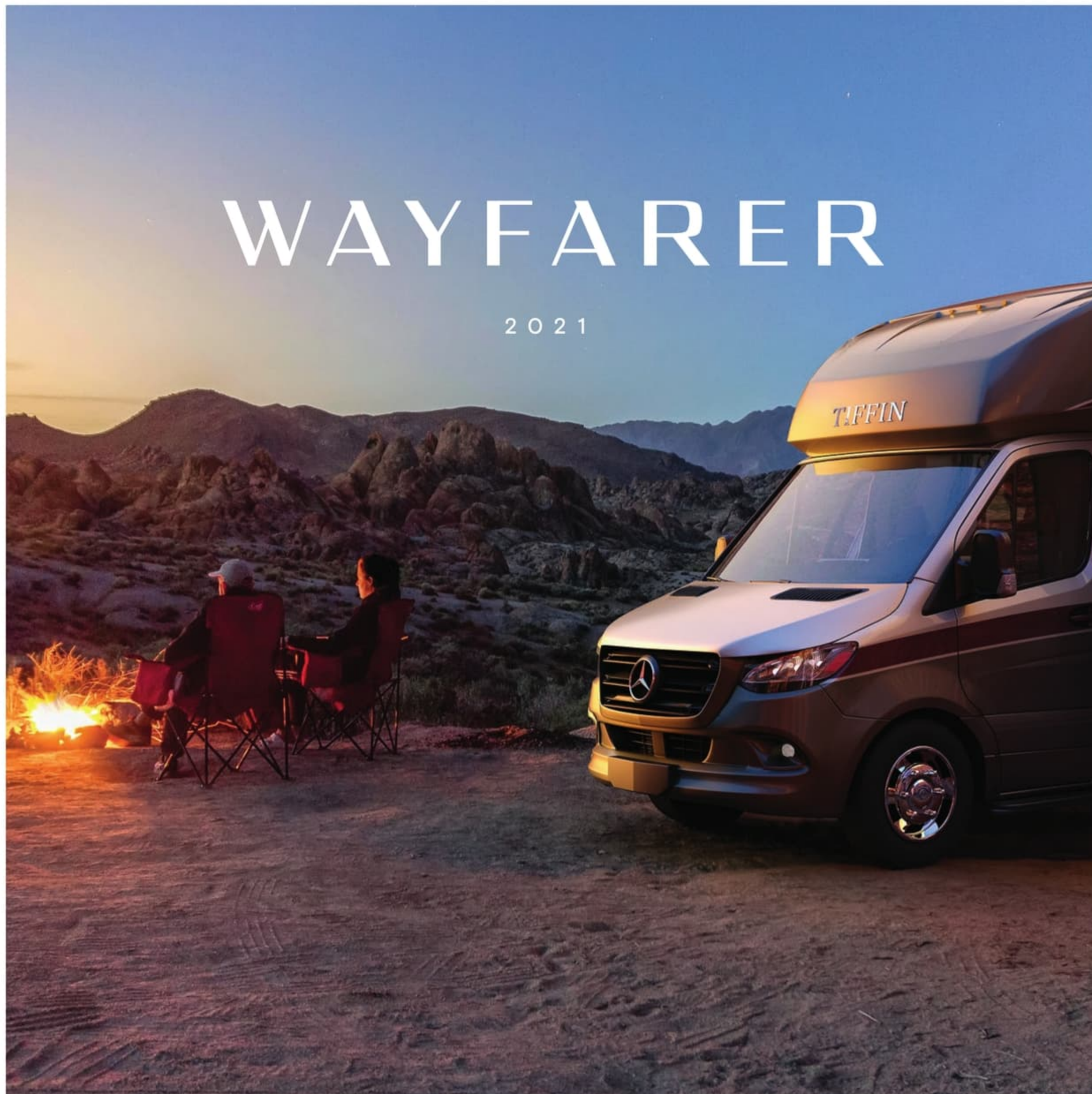
2021



CLASS C | 2021

# WAYFARER

2021



TIFFIN





## Ready when you are.

The all-new Wayfarer offers more of everything you want in a Class C, along with the luxurious styling and amenities synonymous with Tiffin. Designed inside and out with your every need in mind, it features a spacious interior, industry-standard safety features, and high-performance handling with the Mercedes-Benz® chassis. Plus, the Wayfarer's standout style gets a striking boost, thanks to its all-new redesigned look.



Clockwise from top: MBUX infotainment center; Dashboard smartphone integration; Queen sofa Murphy bed; Driver's compartment. All interiors shown are 25 RW with Linen cabinets, Soho décor.

## Ready when you are.

The all-new Wayfarer offers more of everything you want in a Class C, along with the luxurious styling and amenities synonymous with Tiffin. Designed inside and out with your every need in mind, it features a spacious interior, industry-standard safety features, and high-performance handling with the Mercedes-Benz® chassis. Plus, the Wayfarer's standout style gets a striking boost, thanks to its all-new redesigned look.



Clockwise from top: MBUX infotainment center; Dashboard smartphone integration; Queen sofa Murphy bed; Driver's compartment. All interiors shown are 25 RW with Linen cabinets, Soho décor.

## Living Area

Relaxing is a breeze in the Wayfarer. With distinct floor plans offering a variety of sleep options to choose from, as well as, our ample storage and closet spaces mean you can bring along clothing and gear for every type of adventure and occasion. And our new electric Murphy bed in the 25 RW allows for a walk around bed, electric controls, and over-the-bed cabinets.

Clockwise from top: Convection microwave and 6.5 cubic foot refrigerator; Living area; Kitchen; Bathroom sink. All interiors shown are 25 RW with Linen cabinets. Soho décor.



## Living Area

Relaxing is a breeze in the Wayfarer. With distinct floor plans offering a variety of sleep options to choose from, as well as, our ample storage and closet spaces mean you can bring along clothing and gear for every type of adventure and occasion. And our new electric Murphy bed in the 25 RW allows for a walk around bed, electric controls, and over-the-bed cabinets.

Clockwise from top: Convection microwave and 6.5 cubic foot refrigerator; Living area; Kitchen; Bathroom sink. All interiors shown are 25 RW with Linen cabinets, Soho décor.





## Premium Paint System

Our eight-step full-body paint system features premium grade paints sealed with three layers of superclear coat with ultraviolet protection. An additional layer of scratch-resistant plastic coating protects the front of the coach, stairwell, and entry door lock.



HARMONY



CONQUEST



PEBBLE CREEK



PERDIDO



REGAL BLUE



SEA MIST

## Premium Paint System

Our eight-step full-body paint system features premium grade paints sealed with three layers of superclear coat with ultraviolet protection. An additional layer of scratch-resistant plastic coating protects the front of the coach, stairwell, and entry door lock.



HARMONY



CONQUEST



PEBBLE CREEK



PERDIDO



REGAL BLUE



SEA MIST

## Floor Plans

The design of every Wayfarer floor plan must meet four essential criteria: Maximum space, Optimal organization, Relaxation plus, and Elegant atmosphere. Tiffin's MORE Plans offer your family the most comfortable layout for life on the road.

### 25 TW



### 25 SW

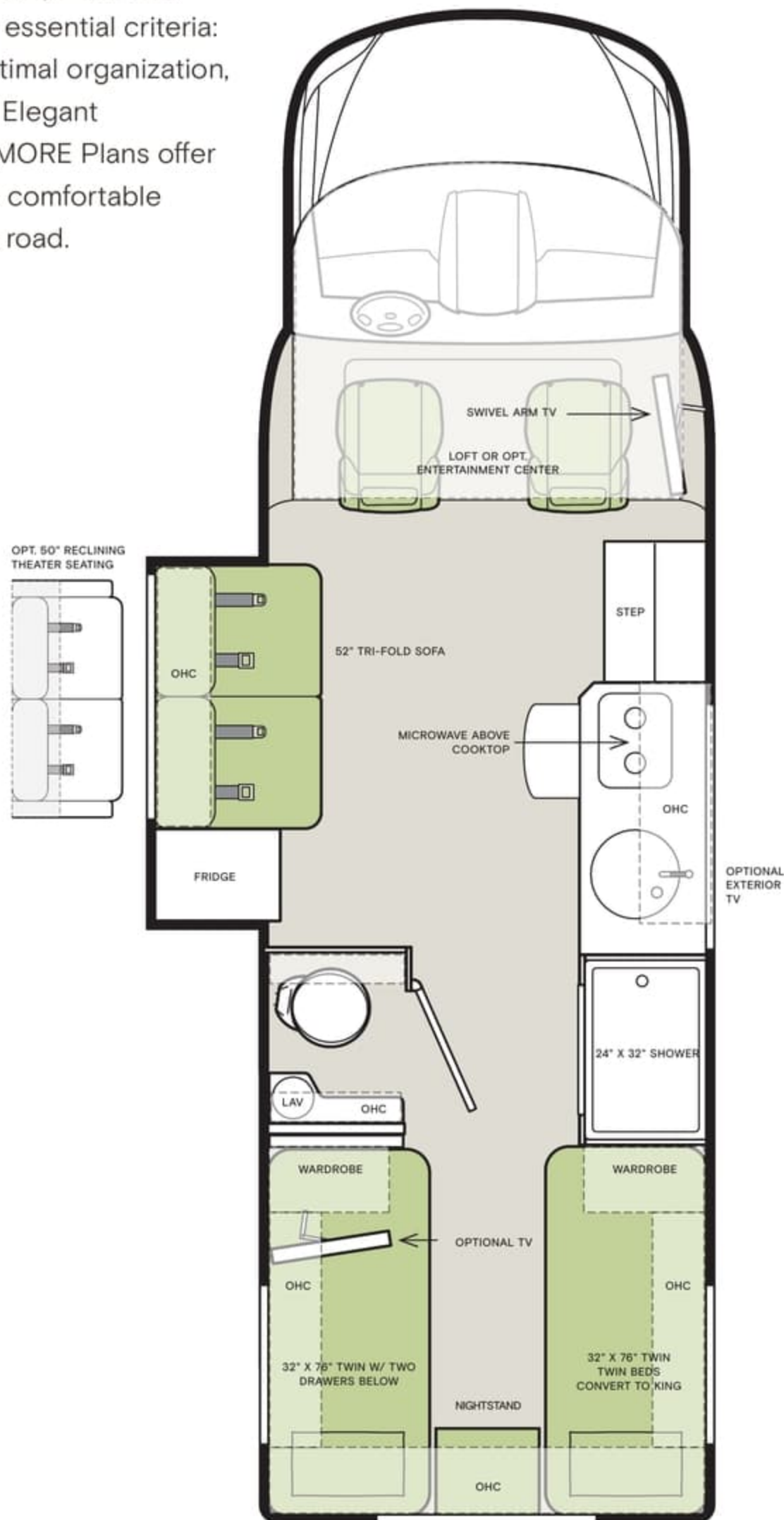


If optional furniture combinations are selected, window locations may vary from diagram shown. All options may not be available in every model. Because of progressive improvements and specifications, standard and optional equipment are subject to change without notice or obligation. For a complete and up-to-date list of available options and specifications, visit [tiffinmotorhomes.com](http://tiffinmotorhomes.com).

## Floor Plans

The design of every Wayfarer floor plan must meet four essential criteria: Maximum space, Optimal organization, Relaxation plus, and Elegant atmosphere. Tiffin's MORE Plans offer your family the most comfortable layout for life on the road.

### 25 TW



### 25 SW

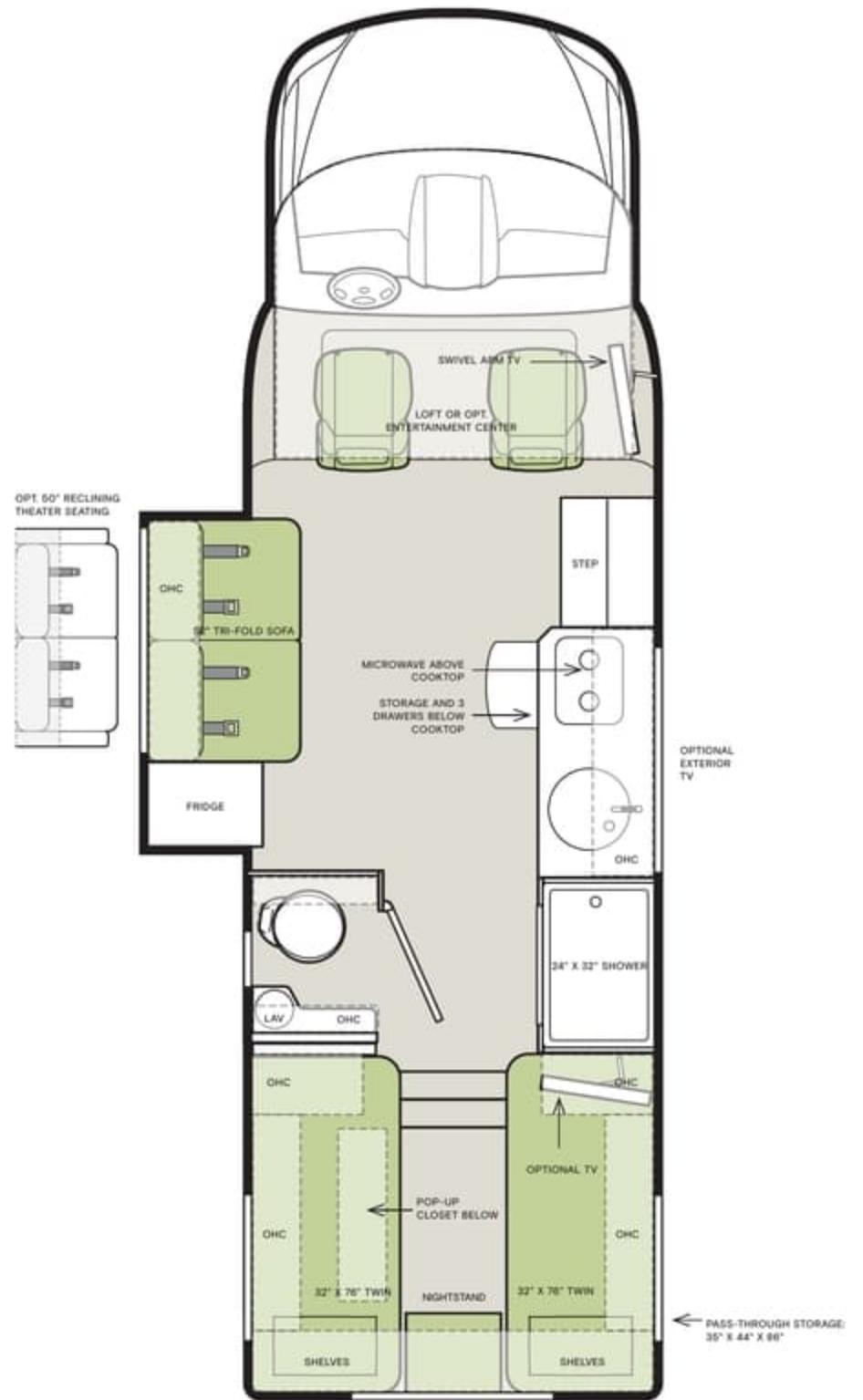


If optional furniture combinations are selected, window locations may vary from diagram shown. All options may not be available in every model. Because of progressive improvements and specifications, standard and optional equipment are subject to change without notice or obligation. For a complete and up-to-date list of available options and specifications, visit [tiffinmotorhomes.com](http://tiffinmotorhomes.com).

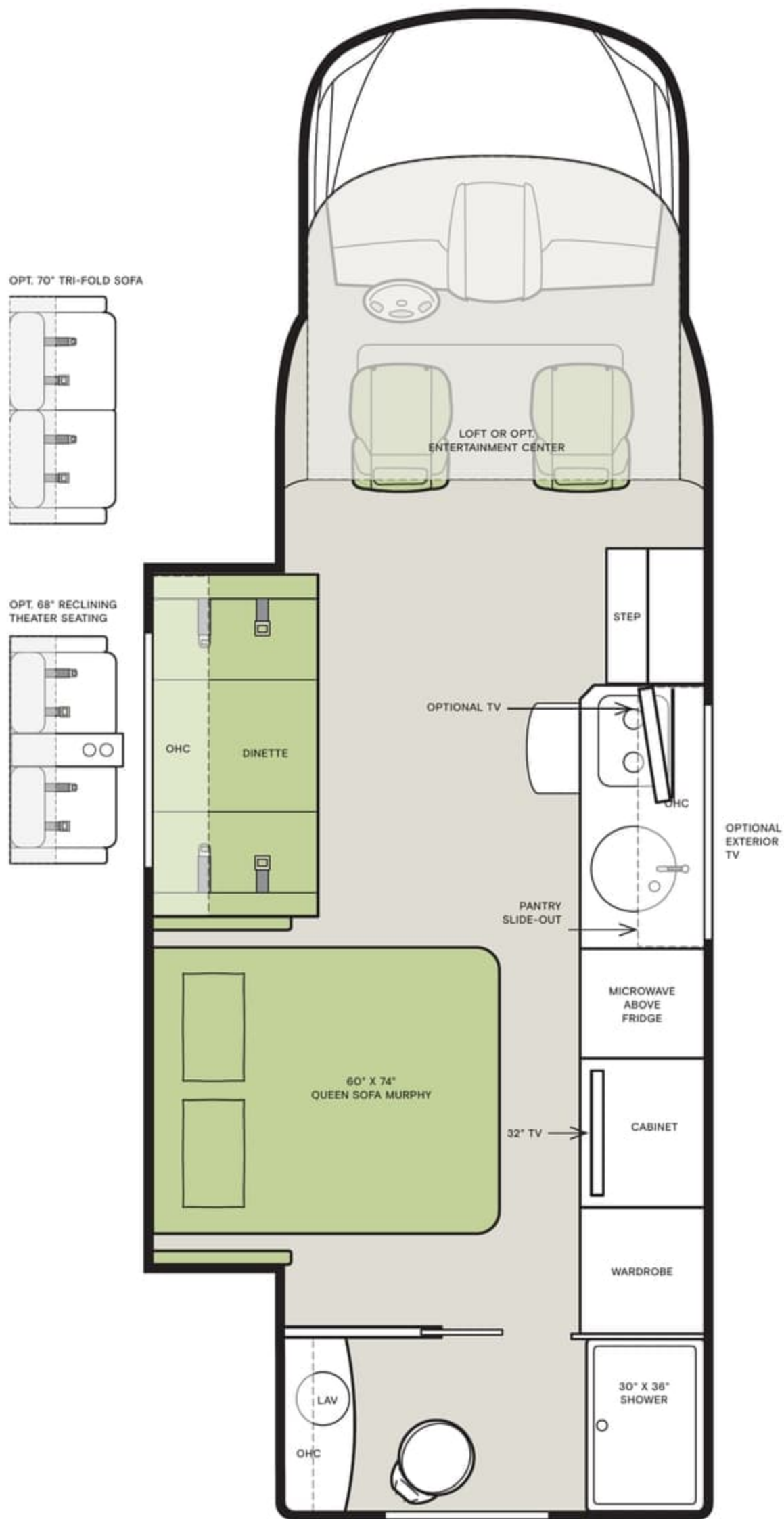
# 25 RW



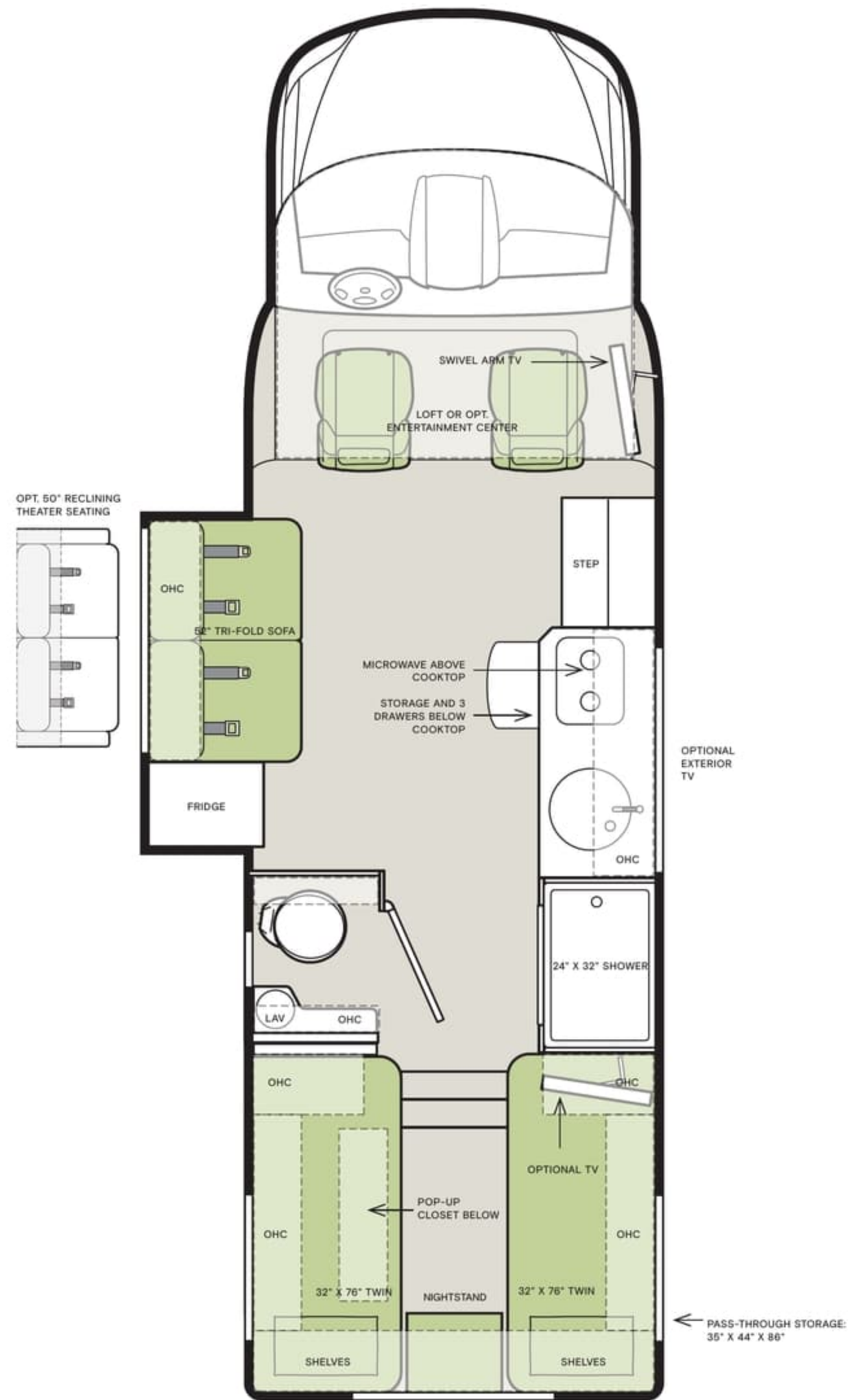
# 25 LW



25 RW



25 LW



## Interior Décor

Make it all yours. Personalize your décor experience with the Wayfarer's customization options. Choose between our four décor packages, as well as handcrafted wood cabinetry. The Wayfarer's luxury design options allow you to arrive and live in style, wherever your travels and adventures take you.

## CABINETS



RUSSETT



LINEN



ACIER GREY/CHATEAU

## OASIS



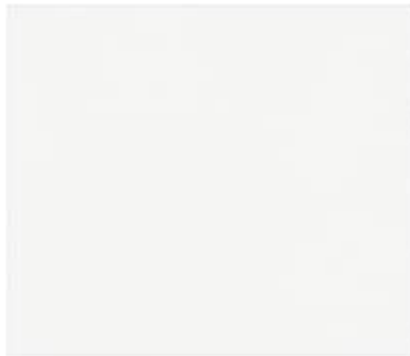
WINDOW TREATMENT



LEATHER - WHITE SAND<sup>1</sup>

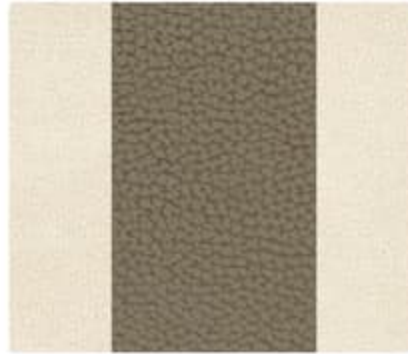


FLOOR



COUNTERTOP

## SOHO



WINDOW TREATMENT



LEATHER - TAVERN<sup>1</sup>



FLOOR



COUNTERTOP



MASTER SUITE



MASTER SUITE

<sup>1</sup> Recommended leather option for this suite. Other leather options available.

## Interior Décor

Make it all yours. Personalize your décor experience with the Wayfarer's customization options. Choose between our four décor packages, as well as handcrafted wood cabinetry. The Wayfarer's luxury design options allow you to arrive and live in style, wherever your travels and adventures take you.

### CABINETS



RUSSETT



LINEN

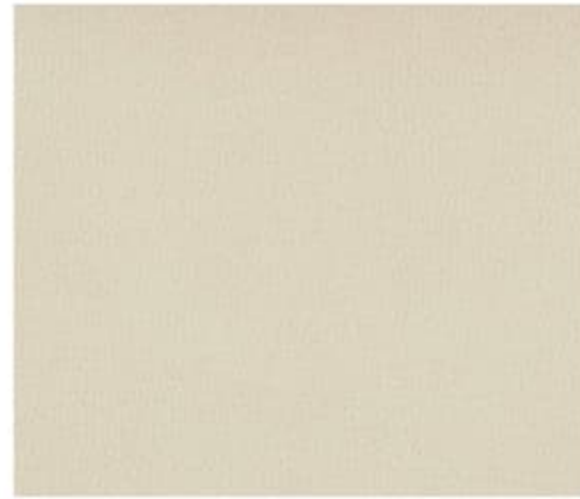


ACIER GREY/CHATEAU

### OASIS



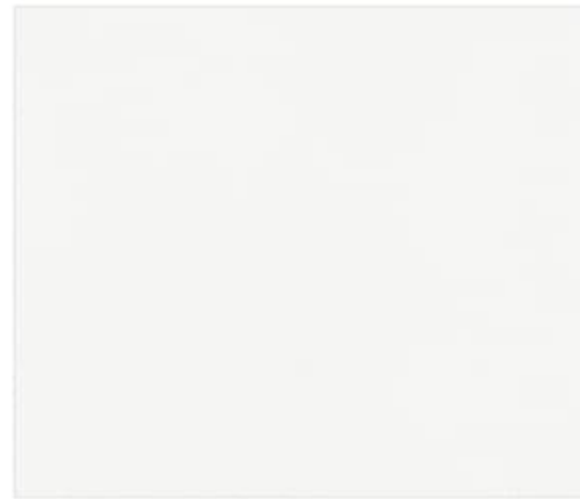
WINDOW TREATMENT



LEATHER - WHITE SAND<sup>1</sup>



FLOOR

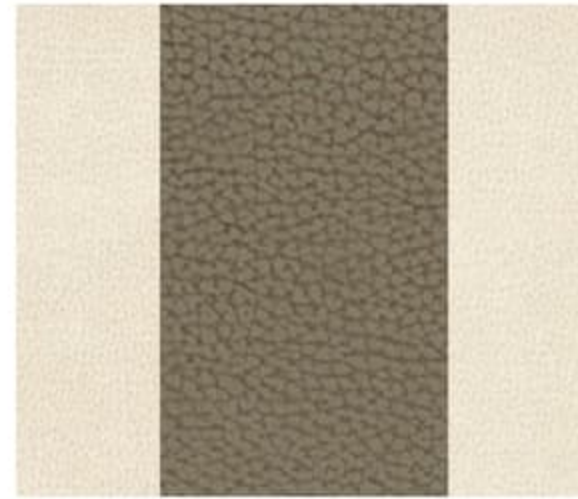


COUNTERTOP



MASTER SUITE

### SOHO



WINDOW TREATMENT



LEATHER - TAVERN<sup>1</sup>



FLOOR



COUNTERTOP



MASTER SUITE

<sup>1</sup> Recommended leather option for this suite. Other leather options available.



WALLCOVERING



RESTON IVORY

CHAMPAGNE



WINDOW TREATMENT



LEATHER - LINEN 1



FLOOR



COUNTERTOP

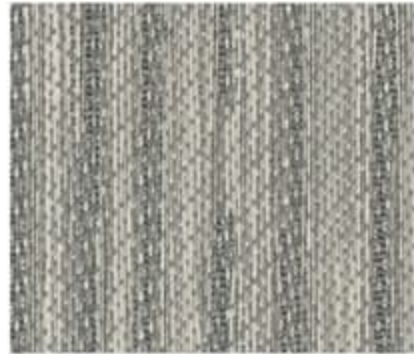
STERLING



WINDOW TREATMENT



LEATHER - GRAY 1



FLOOR



COUNTERTOP



MASTER SUITE



MASTER SUITE

## WALLCOVERING



RESTON IVORY

## CHAMPAGNE



WINDOW TREATMENT



LEATHER - LINEN<sup>1</sup>



FLOOR



COUNTERTOP

## STERLING



WINDOW TREATMENT



LEATHER - GRAY<sup>1</sup>



FLOOR



COUNTERTOP



MASTER SUITE



MASTER SUITE



The 2021 Wayfarer is built on the Mercedes Sprinter chassis. This chassis helps keep drivers safe with attention assist, lane keeping assist, collision prevention assist, and load adaptive electronic stability (esp).

- Automatic Transmission 7G-Tronic™
- 24.5 Gallon Fuel Tank
- Improved Lane Keeping Assist
- Instrument Cluster with Color Display

- Traffic Sign Assist
- Electronically Adjustable Driver and Passenger Seat
- Free Map Data Updates for Three Years

- Distance Regulator Distronic Plus
- Adaptive Cruise Control
- Command Online
- Heated Driver and Passenger Seat

For a complete and up-to-date list of available options and specifications, visit [tiffinmotorhomes.com](http://tiffinmotorhomes.com).



The 2021 Wayfarer is built on the Mercedes Sprinter chassis. This chassis helps keep drivers safe with attention assist, lane keeping assist, collision prevention assist, and load adaptive electronic stability (esp).

- Automatic Transmission 7G-Tronic™
- 24.5 Gallon Fuel Tank
- Improved Lane Keeping Assist
- Instrument Cluster with Color Display

- Traffic Sign Assist
- Electronically Adjustable Driver and Passenger Seat
- Free Map Data Updates for Three Years

- Distance Regulator Distronic Plus
- Adaptive Cruise Control
- Command Online
- Heated Driver and Passenger Seat

For a complete and up-to-date list of available options and specifications, visit [tiffinmotorhomes.com](http://tiffinmotorhomes.com).

# Specifications

WEIGHTS AND MEASURES	25 TW	25 RW	25 LW	25 SW
Overall Length (approximately) <sup>1</sup>	25' 7"	25' 7"	25' 7"	25' 7"
Overall Height (max.)	11' 4"	11' 4"	11' 4"	11' 4"
Interior Height	80"	80"	80"	80"
Overall Width <sup>1</sup>	90"	90"	90"	90"
Interior Width	87"	87"	87"	87"
Fresh Water (gal.)	38	38	32	38
Black Water (gal.)	28	28	28	28
Grey Water (gal.)	32	36	32	33
LPG Tank (gal.)	12	12	12	12
Basement Storage (cubic ft – app.)	68	37	130	54
Trailer Hitch Capacity <sup>2</sup>	5,000 lb	5,000 lb	5,000 lb	5,000 lb

<sup>1</sup> The approximated coach width and length does not include side view mirrors.

<sup>2</sup> Tow ratings and ability are subject to gross combined weight ratings on the tow vehicle.

## PLUMBING AND ELECTRICAL

• Truma® Comfort Plus Instant Hot Water Heater	• Power Cord – 30' Permanently Attached	• Pre-wired for Solar Panels
• Spyder Multiplex Coach Control System	• 3.2 kw Diesel Generator	• 13.5 K Mid Air Conditioner
• HD TV Antenna with Amplifier	• 1000 Watt Inverter Pure Sine	• Park Cable and Ground Satellite Hook-up
• Two 12 V House Batteries (Group 27/180 Amp Hours)	• 110 V and 12 V House Load Center with Power Converter	• Wall-mount Thermostat with Built-in Temperature Sensor
• 30 Amp 110 V House Service	• HD Over-the-air TV Antenna	• 30 K BTU Propane Ducted Furnace
	• Prep for Satellite	• 12 V Engineered Wiring Harnesses

ELECTRICAL OPTIONS	25 TW	25 RW	25 LW	25 SW
15 K Mid Air Conditioner with Heat Pump	O	O	O	O
Complete Solar System with 190 Watt Solar Panel	O	O	O	O
2000 Watt Inverter Pure Sine	O	O	O	O
Wi-Fi Ranger	O	O	O	O
In-motion Satellite	O	O	O	O
Lithium Battery Drop-in Solution	O	O	O	O

## EXTERIOR

• Girard® 16' Wind Sensor Awning with Speakers	• Automatic Lights in Exterior Compartment Doors	• Entrance Door Assist Handle
--	--	-------------------------------

## INTERIOR

• Separate Speaker Zones	• Privacy Shades	• Combination Carbon Monoxide and Propane Detector
• Stereo System	• 2 Captain's Chair Lounge Cushions	• Fan-Tastic Vent Fan
• LED Lights	• Soft Vinyl Ceiling	

INTERIOR OPTIONS		25 TW	25 RW	25 LW	25 SW
Handcrafted Cabinetry	Russet <sup>3</sup>	O	O	O	O
	Acier Grey/Chateau <sup>4</sup>	O	O	O	O
	Linen <sup>5</sup>	O	O	O	O
Fabric Suites	Oasis	O	O	O	O
	Soho	O	O	O	O
	Champagne	O	O	O	O
	Sterling	O	O	O	O
Wallcovering	Reston Ivory	S	S	S	S
Central Vacuum System with Retractable Hose		O	O	O	O

<sup>3</sup> offered with Oasis, Soho, or Champagne

<sup>4</sup> offered with Sterling only

<sup>5</sup> offered with Oasis, Soho, Champagne, or Sterling

## MERCEDES CHASSIS

• 3.0 6-Cylinder Turbo Diesel Engine with 7-speed Automatic Tip Shift Speed Transmission 188 HP/325 lb Torque	• Overhead Control Panel with Reading Lamps	• 5,000 lb Rated Hitch with 500 lb Vertical Tongue Weight and 7-pin Connector
• Attention Assist	• Improved Lane Keeping Assist	• 170.3" Wheel Base
• Multifunction Steering with Trip Computer	• Collision Prevention Assist	• 245 Gallon Fuel Tank
• Light and Rain Sensor	• Load Adaptive Electronic Stability (ESP)	• 4.8 Gallon DEF Tank <sup>6</sup>
• Heated/Electric Adjustable Mirrors	• High Beam Assist	• SumoSprings Ride Assist System
• Windshield with Filter Band	• GVWR- 11,030 lb	• BigFoot® Hydraulic Leveling System
• Stainless Steel Wheel Liners	• GCWR- 15,250 lb	• Optional Aluminum Wheels
	• GAWR Front- 4,410 lb	
	• GAWR Rear- 7,720 lb	

<sup>6</sup> Diesel Exhaust Fluid (DEF) is the active component used in Selective Catalytic Reduction (SCR) engines to reduce nitrogen oxide emissions by 90% to meet EPA standards.

## DRIVER'S COMPARTMENT

• USB Port	• Central Cab Locking with 2 Remotes	• Swivel Seat Base for Both Driver and Passenger Seat
• Radio	• Keyless Start	• Driver and Passenger Door Courtesy Lights
• Back-up Camera	• Windshield Shades	• 10.25" MBUX Infotainment System with In-dash Nav
• Power Cab Door Locks	• Black Leather Seats	• Chassis/House Battery Radio Power Switch
• Power Cab Door Windows	• Heated Seats	• Traffic Sign Assist
• Adaptive Cruise Control	• Leather Wrapped Steering Wheel Cover	• Optional Side-view Cameras
• Tilt Telescoping Steering Wheel	• Power Adjustable Driver and Passenger Seat	
• Sun Visors		
• 12 V Power Outlet		

## LIVING AREA

• House Radio/DVD/Bluetooth	• Flush Mount Windows	• Overhead Bunk
-----------------------------	-----------------------	-----------------

LIVING AREA OPTIONS	25 TW	25 RW	25 LW	25 SW
Living Area TV	S	O	S	S
Face-to-face Booth Dinette – Driver Side	–	S	–	S
70" Sofa w/Trifold Hide-a-bed (54" x 74") – Driver Side	–	O	–	O
50" Sofa w/ Trifold Hide-a-bed (42" x 74") – Driver Side	S	–	S	–
68" Electric Theater Seats – Driver Side	–	O	–	O
50" Electric Theater Seats (No Cupholders) – Driver Side	O	–	O	–
Overhead Entertainment Center	O	O	O	O

## KITCHEN

• LP Cooktop with Built-in Cover	• Designer Faucet	• Fire Extinguisher
• Convection Microwave	• Over-the-counter Lighting	• 110 V Outlet
• Single Bowl Sink	• Under-the-counter Lighting	• Countertop Extension

KITCHEN OPTIONS	25 TW	25 RW	25 LW	25 SW
12 V 5 Cubic Foot Refrigerator	S	–	S	–
12 V 6.5 Cubic Foot Refrigerator	–	S	–	S
Gas/Electric 5 Cubic Foot Refrigerator	O	–	O	–
Gas/Electric 6.5 Cubic Foot Refrigerator	–	O	–	O

## BEDROOM

• Inverted Outlets in Bedroom for CPAP Machine	• USB Port with 110 V Plug	• LED Reading Lights
	• Wardrobe	

BEDROOM OPTIONS	25 TW	25 RW	25 LW	25 SW
Bedroom TV	O	S	O	O
Queen Sofa Murphy Bed (60" x 74")	–	S	–	–
Two Twin Mattresses (32" x 76") Converts into King Bed (86" x 76")	S	–	–	–
Two Twin Mattresses (32" x 76") Pop-up Closet Storage on Driver Side	–	–	S	–
Queen Mattress (60" x 74")	–	–	–	S

## BATHROOM

• Vanity Storage	• Porcelain Vessel Sink with Chrome Faucet	• Fan-Tastic Vent Fan
------------------	--	-----------------------

BATHROOM OPTIONS	25 TW	25 RW	25 LW	25 SW
One-piece Fiberglass Shower (30" x 36") with Skylight	–	S	–	–
One-piece Fiberglass Shower (24" x 32") with Skylight	S	–	S	S

# Specifications

WEIGHTS AND MEASURES	25 TW	25 RW	25 LW	25 SW
Overall Length (approximately) <sup>1</sup>	25' 7"	25' 7"	25' 7"	25' 7"
Overall Height (max.)	11' 4"	11' 4"	11' 4"	11' 4"
Interior Height	80"	80"	80"	80"
Overall Width <sup>1</sup>	90"	90"	90"	90"
Interior Width	87"	87"	87"	87"
Fresh Water (gal.)	38	38	32	38
Black Water (gal.)	28	28	28	28
Grey Water (gal.)	32	36	32	33
LPG Tank (gal.)	12	12	12	12
Basement Storage (cubic ft—app.)	68	37	130	54
Trailer Hitch Capacity <sup>2</sup>	5,000 lb	5,000 lb	5,000 lb	5,000 lb

<sup>1</sup> The approximated coach width and length does not include side view mirrors.

<sup>2</sup> Tow ratings and ability are subject to gross combined weight ratings on the tow vehicle.

## PLUMBING AND ELECTRICAL

• Truma® Comfort Plus Instant Hot Water Heater	• Power Cord — 30' Permanently Attached	• Pre-wired for Solar Panels
• Spyder Multiplex Coach Control System	• 3.2 kw Diesel Generator	• 13.5 K Mid Air Conditioner
• HD TV Antenna with Amplifier	• 1000 Watt Inverter Pure Sine	• Park Cable and Ground Satellite Hook-up
• Two 12 V House Batteries (Group 27/180 Amp Hours)	• 110 V and 12 V House Load Center with Power Converter	• Wall-mount Thermostat with Built-in Temperature Sensor
• 30 Amp 110 V House Service	• HD Over-the-air TV Antenna	• 30 K BTU Propane Ducted Furnace
	• Prep for Satellite	• 12 V Engineered Wiring Harnesses

ELECTRICAL OPTIONS	25 TW	25 RW	25 LW	25 SW
15 K Mid Air Conditioner with Heat Pump	O	O	O	O
Complete Solar System with 190 Watt Solar Panel	O	O	O	O
2000 Watt Inverter Pure Sine	O	O	O	O
Wi-Fi Ranger	O	O	O	O
In-motion Satellite	O	O	O	O
Lithium Battery Drop-in Solution	O	O	O	O

## EXTERIOR

• Girard® 16' Wind Sensor Awning with Speakers	• Automatic Lights in Exterior Compartment Doors	• Entrance Door Assist Handle
--	--	-------------------------------

## INTERIOR

• Separate Speaker Zones	• Privacy Shades	• Combination Carbon Monoxide and Propane Detector
• Stereo System	• 2 Captain's Chair Lounge Cushions	• Fan-Tastic Vent Fan
• LED Lights	• Soft Vinyl Ceiling	

INTERIOR OPTIONS		25 TW	25 RW	25 LW	25 SW
Handcrafted Cabinetry	Russet <sup>3</sup>	O	O	O	O
	Acier Grey/Chateau <sup>4</sup>	O	O	O	O
	Linen <sup>5</sup>	O	O	O	O
Fabric Suites	Oasis	O	O	O	O
	Soho	O	O	O	O
	Champagne	O	O	O	O
	Sterling	O	O	O	O
Wallcovering	Reston Ivory	S	S	S	S
Central Vacuum System with Retractable Hose		O	O	O	O

<sup>3</sup> offered with Oasis, Soho, or Champagne

<sup>4</sup> offered with Sterling only

<sup>5</sup> offered with Oasis, Soho, Champagne, or Sterling

## MERCEDES CHASSIS

• 3.0 6-Cylinder Turbo Diesel Engine with 7-speed Automatic Tip Shift Speed Transmission 188 HP/325 lb Torque	• Overhead Control Panel with Reading Lamps	• 5,000 lb Rated Hitch with 500 lb Vertical Tongue Weight and 7-pin Connector
• Attention Assist	• Improved Lane Keeping Assist	• 170.3" Wheel Base
• Multifunction Steering with Trip Computer	• Collision Prevention Assist	• 24.5 Gallon Fuel Tank
• Light and Rain Sensor	• Load Adaptive Electronic Stability (ESP)	• 4.8 Gallon DEF Tank <sup>6</sup>
• Heated/Electric Adjustable Mirrors	• High Beam Assist	• SumoSprings Ride Assist System
• Windshield with Filter Band	• GVWR- 11,030 lb	• BigFoot® Hydraulic Leveling System
• Stainless Steel Wheel Liners	• GCWR- 15,250 lb	• Optional Aluminum Wheels
	• GAWR Front- 4,410 lb	
	• GAWR Rear- 7,720 lb	

<sup>6</sup> Diesel Exhaust Fluid (DEF) is the active component used in Selective Catalytic Reduction (SCR) engines to reduce nitrogen oxide emissions by 90% to meet EPA standards.

## DRIVER'S COMPARTMENT

• USB Port	• Central Cab Locking with 2 Remotes	• Swivel Seat Base for Both Driver and Passenger Seat
• Radio	• Keyless Start	• Driver and Passenger Door Courtesy Lights
• Back-up Camera	• Windshield Shades	• 10.25" MBUX Infotainment System with In-dash Nav
• Power Cab Door Locks	• Black Leather Seats	• Chassis/House Battery Radio Power Switch
• Power Cab Door Windows	• Heated Seats	• Traffic Sign Assist
• Adaptive Cruise Control	• Leather Wrapped Steering Wheel Cover	• Optional Side-view Cameras
• Tilt Telescoping Steering Wheel	• Power Adjustable Driver and Passenger Seat	
• Sun Visors		
• 12 V Power Outlet		

## LIVING AREA

• House Radio/DVD/Bluetooth	• Flush Mount Windows	• Overhead Bunk
-----------------------------	-----------------------	-----------------

LIVING AREA OPTIONS	25 TW	25 RW	25 LW	25 SW
Living Area TV	S	O	S	S
Face-to-face Booth Dinette - Driver Side	—	S	—	S
70" Sofa w/Trifold Hide-a-bed (54" x 74") - Driver Side	—	O	—	O
50" Sofa w/ Trifold Hide-a-bed (42" x 74") - Driver Side	S	—	S	—
68" Electric Theater Seats - Driver Side	—	O	—	O
50" Electric Theater Seats (No Cupholders) - Driver Side	O	—	O	—
Overhead Entertainment Center	O	O	O	O

## KITCHEN

• LP Cooktop with Built-in Cover	• Designer Faucet	• Fire Extinguisher
• Convection Microwave	• Over-the-counter Lighting	• 110 V Outlet
• Single Bowl Sink	• Under-the-counter Lighting	• Countertop Extension

KITCHEN OPTIONS	25 TW	25 RW	25 LW	25 SW
12 V 5 Cubic Foot Refrigerator	S	—	S	—
12 V 6.5 Cubic Foot Refrigerator	—	S	—	S
Gas/Electric 5 Cubic Foot Refrigerator	O	—	O	—
Gas/Electric 6.5 Cubic Foot Refrigerator	—	O	—	O

## BEDROOM

• Inverted Outlets in Bedroom for CPAP Machine	• USB Port with 110 V Plug	• LED Reading Lights
	• Wardrobe	

BEDROOM OPTIONS	25 TW	25 RW	25 LW	25 SW
Bedroom TV	O	S	O	O
Queen Sofa Murphy Bed (60" x 74")	—	S	—	—
Two Twin Mattresses (32" x 76") Converts into King Bed (86" x 76")	S	—	—	—
Two Twin Mattresses (32" x 76") Pop-up Closet Storage on Driver Side	—	—	S	—
Queen Mattress (60" x 74")	—	—	—	S

## BATHROOM

• Vanity Storage	• Porcelain Vessel Sink with Chrome Faucet	• Fan-Tastic Vent Fan
------------------	--	-----------------------

BATHROOM OPTIONS	25 TW	25 RW	25 LW	25 SW
One-piece Fiberglass Shower (30" x 36") with Skylight	—	S	—	—
One-piece Fiberglass Shower (24" x 32") with Skylight	S	—	S	S



FOR PARTS & SERVICE CALL 205.487.4710 OR VISIT [TIFFINMOTORHOMES.COM](http://TIFFINMOTORHOMES.COM)  
625 FAWN GROVE ROAD WINFIELD, AL 35594 [f](#) [t](#) [i](#) [p](#)

1

YEAR OR 12,000 MILES  
LIMITED WARRANTY

3

YEAR  
PAINT DELAMINATION  
LIMITED WARRANTY

5

YEAR OR 100,000  
MILES CHASSIS POWERTRAIN  
LIMITED WARRANTY

3

YEAR OR 36,000 MILES  
MERCEDES-BENZ CHASSIS  
LIMITED WARRANTY

1

YEAR  
COACH ROADSIDE  
SERVICES



**TIFFIN**  
MOTORHOMES

©2021 Tiffin Motorhomes, Inc. Allegro®, Allegro Breeze®, Allegro RED®, Phaeton®, Allegro Bus®, Zephyr®, Wayfarer®, Roughing It Smoothly®, Open Road®, PowerGlide®, and Pusher® are registered trademarks of Tiffin Motorhomes, Inc. All rights reserved. For all information concerning the limited warranty provided by Tiffin, please refer to the full written limited warranty set forth on the Tiffin website or held by our authorized dealerships. Please note, some interior furnishings not included.



FOR PARTS & SERVICE CALL 205.487.4710 OR VISIT [TIFFINMOTORHOMES.COM](http://TIFFINMOTORHOMES.COM)  
625 FAWN GROVE ROAD WINFIELD, AL 35594 [f](#) [t](#) [i](#) [p](#)

1

YEAR OR 12,000 MILES  
LIMITED WARRANTY

---

3

YEAR  
PAINT DELAMINATION  
LIMITED WARRANTY

---

5

YEAR OR 100,000  
MILES CHASSIS POWERTRAIN  
LIMITED WARRANTY

---

3

YEAR OR 36,000 MILES  
MERCEDES-BENZ CHASSIS  
LIMITED WARRANTY

---

1

YEAR  
COACH ROADSIDE  
SERVICES



**TIFFIN**  
MOTORHOMES

©2021 Tiffin Motorhomes, Inc. Allegro®, Allegro Breeze®, Allegro RED®, Phaeton®, Allegro Bus®, Zephyr®, Wayfarer®, Roughing It Smoothly®, Open Road®, PowerGlide®, and Pusher® are registered trademarks of Tiffin Motorhomes, Inc. All rights reserved. For all information concerning the limited warranty provided by Tiffin, please refer to the full written limited warranty set forth on the Tiffin website or held by our authorized dealerships. Please note, some interior furnishings not included.