



STRATUS

ULTRA-Lite Travel Trailers



Designed for campers, by campers.



STRATUS

ULTRA-Lite Travel Trailers



Designed for campers, by campers.

STRATUS

Stratus has it all... an eye-catching exterior, stunning decor and a long list of exciting standard features. Not to mention, there's tons and tons of storage, including loads of clever concealed spaces to stash more stuff. This affordable ultra-lite travel trailer has got the goods, with a fresh, modern vibe.

Kitchens feature a window to welcome in natural light. The gas range with glass cover adds valuable counter space, and the microwave and oven offer the same conveniences as home.



Contrasting light and dark woodwork gives a nod to today's mixed cabinetry aesthetic, with Antique White nicely offsetting the dark Heirloom Maple. The LED TV and multi-media stereo, DVD and wireless connectivity are perfect for indoor camping, and the optional 30-inch fireplace takes the edge off cool mornings and chilly nights. The discreet cubby below the fireplace stores Rover's doggie dish, or lets you keep shoes at the ready.

STRATUS

Stratus has it all... an eye-catching exterior, stunning decor and a long list of exciting standard features. Not to mention, there's tons and tons of storage, including loads of clever concealed spaces to stash more stuff. This affordable ultra-lite travel trailer has got the goods, with a fresh, modern vibe.

Kitchens feature a window to welcome in natural light. The gas range with glass cover adds valuable counter space, and the microwave and oven offer the same conveniences as home.



Contrasting light and dark woodwork gives a nod to today's mixed cabinetry aesthetic, with Antique White nicely offsetting the dark Heirloom Maple. The LED TV and multi-media stereo, DVD and wireless connectivity are perfect for indoor camping, and the optional 30-inch fireplace takes the edge off cool mornings and chilly nights. The discreet cubby below the fireplace stores Rover's doggie dish, or lets you keep shoes at the ready.

Kids love having their own special area, and bunkhouse floorplans are fun, functional and comfortable, with a sturdy fixed ladder and lookout windows on both levels. Ample open-shelf storage gives easy access to toys and games, and the under-bed space accommodates backpacks and plenty of other large items.



The optional theater seats recline individually, and offer heat/massage.



The 60 x 80-inch true residential queen bed offers storage beside, above and below. USB ports, 110V outlet and light switches are all within reach, as is CPAP nightstand storage. Tall shirt cabinets on both sides allow for clothes on hangers. The bed lifts to reveal spacious storage, and overhead cabinet accent lighting completes the scene.



Stor-More nightstands are CPAP sized and have USB and 100V outlets.



Dune Décor

Kids love having their own special area, and bunkhouse floorplans are fun, functional and comfortable, with a sturdy fixed ladder and lookout windows on both levels. Ample open-shelf storage gives easy access to toys and games, and the under-bed space accommodates backpacks and plenty of other large items.



The optional theater seats recline individually, and offer heat/massage.



The 60 x 80-inch true residential queen bed offers storage beside, above and below. USB ports, 110V outlet and light switches are all within reach, as is CPAP nightstand storage. Tall shirt cabinets on both sides allow for clothes on hangers. The bed lifts to reveal spacious storage, and overhead cabinet accent lighting completes the scene.



Stor-More nightstands are CPAP sized and have USB and 100V outlets.



Interior Features



Multi-directional AC/vent



Skylight with shade



Antique White



Heirloom Maple



Live edge countertops



Let's face it, camping is all about eating. With the generous 8 CU FT refrigerator, you don't need to skimp on anything!



Safe Tek Box hidden charging station and valuables storage includes 110V outlet and USB charger.



Rugged vinyl flooring with 7-year limited warranty and dinettes that boast two huge 36-inch removable storage bins, which can be taken into the house and packed with food, gear, and clothes, and then slid back out of sight.

Exterior Features



Stratus comes with a Lamilux premium high-gloss gelcoat surface that's easy to clean and won't rust, rot, corrode or peel. The power awning includes LED lights. Wheels are high-polished, black-accented aluminum, and radial tires are filled with nitrogen. Secure stabilizer jacks are mounted at 45 degrees, for added stability. Pass-through storage compartment with heavy-duty slam-latch doors include motion light and magnetic door catches. Power tongue is lighted for added convenience.



Screen Shot screen door and solid flip-up step keep the bugs out and add secure footing.



Outside shower with hot and cold faucets keep everyone sand and dirt free!



Several Stratus floorplans offer the Campfire Café; an outside cooking station that brings the conveniences of indoor cooking outdoors.

Exterior Colors



Arctic White (Standard)



Victory Red



Indigo Blue



Aztec Gray

Interior Features



Multi-directional AC/vent



Skylight with shade



Let's face it, camping is all about eating. With the generous 8 CU FT refrigerator, you don't need to skimp on anything!



Safe Tek Box hidden charging station and valuables storage includes 110V outlet and USB charger.



Rugged vinyl flooring with 7-year limited warranty and dinettes that boast two huge 36-inch removable storage bins, which can be taken into the house and packed with food, gear, and clothes, and then slid back out of sight.



Antique White



Heirloom Maple



Live edge countertops

Exterior Features



Stratus comes with a Lamilux premium high-gloss gelcoat surface that's easy to clean and won't rust, rot, corrode or peel. The power awning includes LED lights. Wheels are high-polished, black-accented aluminum, and radial tires are filled with nitrogen. Secure stabilizer jacks are mounted at 45 degrees, for added stability. Pass-through storage compartment with heavy-duty slam-latch doors include motion light and magnetic door catches. Power tongue is lighted for added convenience.



Screen Shot screen door and solid flip-up step keep the bugs out and add secure footing.



Outside shower with hot and cold faucets keep everyone sand and dirt free!



Several Stratus floorplans offer the Campfire Café; an outside cooking station that brings the conveniences of indoor cooking outdoors.

Exterior Colors



Arctic White (Standard)



Victory Red



Indigo Blue



Aztec Gray

Floorplans



SR23IVRB | 5,300 UVW | 26' 5" LENGTH | SLEEPS 4



SR26IVBH | 5,990 UVW | 29' 10" LENGTH | SLEEPS 8



SR26IVRL | 5,900 UVW | 29' 10" LENGTH | SLEEPS 6



SR28IVBH | 6,510 UVW | 31' 8" LENGTH | SLEEPS 8



SR29IVQB | 6,870 UVW | 33' 10" LENGTH | SLEEPS 10

NEW



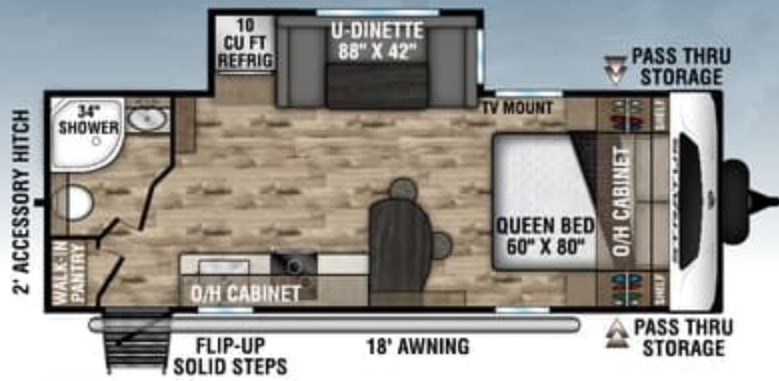
SR32IVQB | 6,960 UVW | 36' 5" LENGTH | SLEEPS 10

TRAVEL TRAILERS	SR23IVRB	SR26IVBH	SR26IVRL	SR28IVBH	SR29IVQB	SR32IVQB
UVW (Unloaded Vehicle Weight)*	5,300	5,990	5,900	6,510	6,870	6,960
Dry Hitch Weight*	540	730	590	680	980	780
Dry Axle Weight*	4,760	5,265	5,310	5,830	5,890	6,180
CCC (Cargo Carrying Capacity)	1,985	1,390	1,420	1,790	2,420	2,265
Interior Height	78"	78"	78"	78"	78"	78"
Exterior Height with A/C	10' 10"	10' 10"	10' 10"	10' 10"	10' 10"	10' 10"
Exterior Width	96"	96"	96"	96"	96"	96"
Exterior Length**	26' 5"	29' 10"	29' 10"	31' 8"	33' 10"	36' 5"
Refrigerator (Cubic Feet)	10	10	10	10	10	10
Water Heater Cap. (Gal. Gas w/DSI)	6	6	6	6	6	6
Fresh Water Capacity (Gallon)	45	45	45	45	65	45
Black Water Capacity (Gallon)	32	32	32	32	32	32
Gray Water Capacity (Gallon)	32	64	64	64	32	64
LP Gas Capacity (Lbs.)	40	40	40	40	40	40
Furnace BTUs (1,000h)	30	30	30	30	30	30
Tire Size	15"	15"	15"	15"	15"	15"
Awning	18'	18'	16'	20'	20'	20'

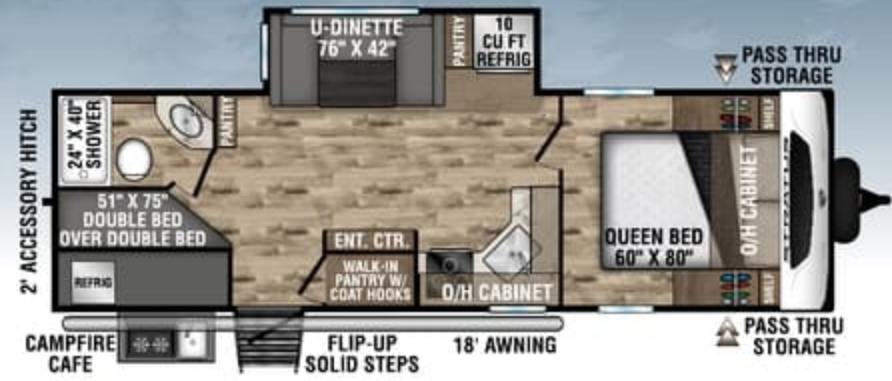
*This weight reflects the rolling average unit weight for each model. Your trailer weight will vary according to optional equipment.

**Exterior length is measured from rear of bumper to leading edge of coupler.

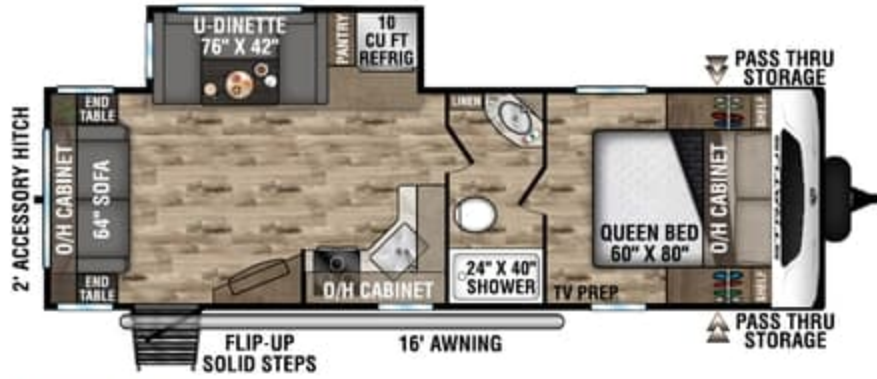
Floorplans



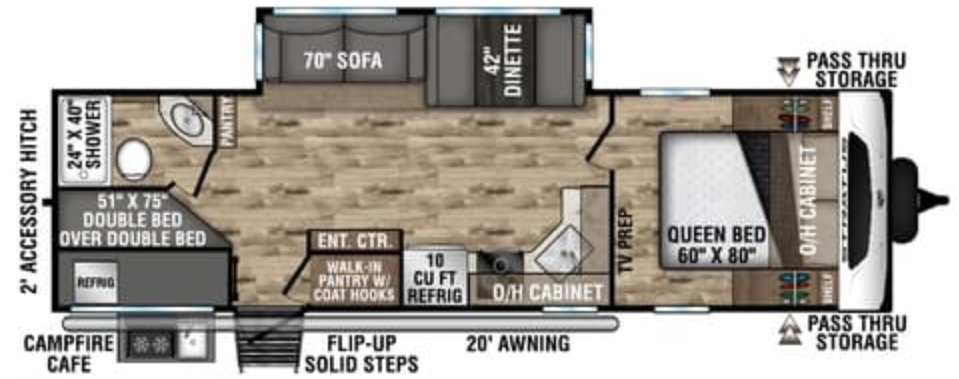
SR231VRB | 5,300 UVW | 26' 5" LENGTH | SLEEPS 4



SR261VBH | 5,990 UVW | 29' 10" LENGTH | SLEEPS 8



SR261VRL | 5,900 UVW | 29' 10" LENGTH | SLEEPS 6



SR281VBH | 6,510 UVW | 31' 8" LENGTH | SLEEPS 8



SR291VQB | 6,870 UVW | 33' 10" LENGTH | SLEEPS 10

NEW



SR321VQB | 6,960 UVW | 36' 5" LENGTH | SLEEPS 10

TRAVEL TRAILERS	SR231VRB	SR261VBH	SR261VRL	SR281VBH	SR291VQB	SR321VQB
UVW (Unloaded Vehicle Weight)*	5,300	5,990	5,900	6,510	6,870	6,960
Dry Hitch Weight*	540	730	590	680	980	780
Dry Axle Weight*	4,760	5,265	5,310	5,830	5,890	6,180
CCC (Cargo Carrying Capacity)	1,985	1,390	1,420	1,790	2,420	2,265
Interior Height	78"	78"	78"	78"	78"	78"
Exterior Height with A/C	10' 10"	10' 10"	10' 10"	10' 10"	10' 10"	10' 10"
Exterior Width	96"	96"	96"	96"	96"	96"
Exterior Length**	26' 5"	29' 10"	29' 10"	31' 8"	33' 10"	36' 5"
Refrigerator (Cubic Feet)	10	10	10	10	10	10
Water Heater Cap. (Gal. Gas w/DSI)	6	6	6	6	6	6
Fresh Water Capacity (Gallon)	45	45	45	45	65	45
Black Water Capacity (Gallon)	32	32	32	32	32	32
Gray Water Capacity (Gallon)	32	64	64	64	32	64
LP Gas Capacity (Lbs.)	40	40	40	40	40	40
Furnace BTUs (1,000s)	30	30	30	30	30	30
Tire Size	15"	15"	15"	15"	15"	15"
Awning	18'	18'	16'	20'	20'	20'

*This weight reflects the rolling average unit weight for each model. Your trailer weight will vary according to optional equipment.

**Exterior length is measured from rear of bumper to leading edge of coupler.

Packages & Options

CLOUD 9 PACKAGE 1.3

Modern Farmhouse design with antique white & heirloom maple-glazed cabinets, King Wi-Fi prep, entry door w/clear view window, HDMI/DVD Stereo w/5.1 AMP USB charger, large single-bowl stainless steel under-mount sink w/cover/dish drying racks, live edge countertops, 40" TV w/swing-arm, Venture LevelMate PRO system, aerodynamic front radius window, barn-style passage door(s), motion light in bathroom, main control panel, 12V 10 CU FT refrigerator, Venture cutting board, tucked bumper w/2" accessory hitch, roof-mounted solar prep, new upgraded residential furniture, 60" x 80" Serta Memory Foam mattress, rear backup lighting.

WEATHER-SHIELD PACKAGE (MANDATORY)

Forced air heated & enclosed underbelly, enclosed gate valves, 360 degree residential fiberglass insulation, 360 degree radiant foil insulation, radiant foil-wrapped tanks & reflective PVC roof membrane w/20-year warranty.

EXTERIOR PACKAGE (MANDATORY)

Carbon fiber pattern rock guard, friction-hinge entry door, large assist grab handle, tinted safety glass windows, 5/8" tongue & groove plywood floor decking, NXG huck bolt frame, 15" radial tires w/EZ Lube hubs, wide-trek axles w/self-adjusting brakes, (4) angled stabilizer jacks, (2) 20 LB LP tanks w/easy access cover, rear ladder, walkable roof, gutter rails w/downspouts, gutter rails above slideouts, hot & cold outside shower, black tank flush, 6 GAL gas/electric DSI water heater, Furrion marine-grade detachable power cord, prewired for Furrion observation camera, dedicated cable & satellite connections, marine-grade exterior speakers, digital antenna receiver, high-efficiency LED exterior lights, blue LED stabilizer accent lighting, motion-activated pass-thru storage light, magnetic baggage door catches, Keyed Alike key system, battery disconnect, lighted power tongue jack, flip-up aluminum solid step, spare tire & carrier, 15" high polished aluminum rims, Venture RV bottle opener/dog tie down, 51 GAL fresh water tank, 64 GAL gray water tank.

INTERIOR PACKAGE (MANDATORY)

Shoe storage, coat rack, pet dish location, seamless Surf-X countertops & tabletops, decorative backsplash, hardwood cabinet doors & drawer faces, Safe-Tek hidden storage w/charging center w/110V & USB charging ports, high-efficiency LED lighting, large panoramic windows, skylight w/shade, extra-large pantry/cabinet storage, high-rise metal faucet w/sprayer, full-extension ball bearing drawer guides, tufted cushions at dinette, nightshades, residential-style valances, flush-mounted interior speakers, microwave, Coleman Whisper A/C, porcelain foot-flush toilet, full-length closets w/StorMore nightstands, gas struts under master bed, motion-activated interior entry light, 30" wide-view fireplace (N/A 231VRB), jiffy w/fold-down center console, Furrion oven & 3-burner cooktop w/flush glass cover.

OPTIONS

(3) exterior colors (gray, red, blue) (white is standard), off-the-grid solar PKG, incl. (1) 100W panel & controller, (4) power stabilizer jacks, theater seating w/heat, massage & USB ports IPO jackknife sofa, 50AMP service w/2nd A/C prep, 15,000 BTU A/C IPO 13,500 BTU A/C, low profile 15,000 BTU A/C IPO 13,500 BTU A/C, 2nd A/C (13,500 BTU, 50A required), 8 CU FT gas/electric refrigerator, tri-fold sofa IPO jackknife sofa, LevelMatePRO leveling system*, 40" LED HD TV w/swing arm*, swing-away bumper-mounted griddle, backup observation camera.

*Included in the Cloud 9 Package 1.3



Stratus' Weather Shield features a radiant foil barrier, forced heat, enclosed underbelly, enclosed gate valves and reflective PVC roof membrane with limited 20-year warranty.



LevelMate PRO lets you level your unit on the first try! This option calculates and displays the height required to achieve a perfectly level position.



985 N 900 W | Shipshewana, IN 46565 | www.venture-rv.com

Due to continual research and advances, manufacturer reserves the right to change specifications, design, price and equipment without notice, and assumes no responsibility for any error in this literature. Some items shown are not included as standard or optional equipment.
©2020 Venture | 1/25/21 | 25M

Packages & Options

CLOUD 9 PACKAGE 1.3

Modern Farmhouse design with antique white & heirloom maple-glazed cabinets, King Wi-Fi prep, entry door w/clear view window, HDMI/DVD Stereo w/5.1 AMP USB charger, large single-bowl stainless steel under-mount sink w/cover/dish drying racks, live edge countertops, 40" TV w/swing-arm, Venture LevelMate PRO system, aerodynamic front radius window, barn-style passage door(s), motion light in bathroom, main control panel, 12V 10 CU FT refrigerator, Venture cutting board, tucked bumper w/2" accessory hitch, roof-mounted solar prep, new upgraded residential furniture, 60" x 80" Serta Memory Foam mattress, rear backup lighting.

WEATHER-SHIELD PACKAGE (MANDATORY)

Forced air heated & enclosed underbelly, enclosed gate valves, 360 degree residential fiberglass insulation, 360 degree radiant foil insulation, radiant foil-wrapped tanks & reflective PVC roof membrane w/20-year warranty.

EXTERIOR PACKAGE (MANDATORY)

Carbon fiber pattern rock guard, friction-hinge entry door, large assist grab handle, tinted safety glass windows, 5/8" tongue & groove plywood floor decking, NXG huck bolt frame, 15" radial tires w/EZ Lube hubs, wide-trek axles w/self-adjusting brakes, (4) angled stabilizer jacks, (2) 20 LB LP tanks w/easy access cover, rear ladder, walkable roof, gutter rails w/downspouts, gutter rails above slideouts, hot & cold outside shower, black tank flush, 6 GAL gas/electric DSI water heater, Furrion marine-grade detachable power cord, prewired for Furrion observation camera, dedicated cable & satellite connections, marine-grade exterior speakers, digital antenna receiver, high-efficiency LED exterior lights, blue LED stabilizer accent lighting, motion-activated pass-thru storage light, magnetic baggage door catches, Keyed Alike key system, battery disconnect, lighted power tongue jack, flip-up aluminum solid step, spare tire & carrier, 15" high polished aluminum rims, Venture RV bottle opener/dog tie down, 51 GAL fresh water tank, 64 GAL gray water tank.

INTERIOR PACKAGE (MANDATORY)

Shoe storage, coat rack, pet dish location, seamless Surf-X countertops & tabletops, decorative backsplash, hardwood cabinet doors & drawer faces, Safe-Tek hidden storage w/charging center w/110V & USB charging ports, high-efficiency LED lighting, large panoramic windows, skylight w/shade, extra-large pantry/cabinet storage, high-rise metal faucet w/sprayer, full-extension ball bearing drawer guides, tufted cushions at dinette, nightshades, residential-style valances, flush-mounted interior speakers, microwave, Coleman Whisper A/C, porcelain foot-flush toilet, full-length closets w/StorMore nightstands, gas struts under master bed, motion-activated interior entry light, 30" wide-view fireplace (N/A 231VRB), jiffy w/fold-down center console, Furrion oven & 3-burner cooktop w/flush glass cover.

OPTIONS

(3) exterior colors (gray, red, blue) (white is standard), off-the-grid solar PKG, incl. (1) 100W panel & controller, (4) power stabilizer jacks, theater seating w/heat, massage & USB ports IPO jackknife sofa, 50AMP service w/2nd A/C prep, 15,000 BTU A/C IPO 13,500 BTU A/C, low profile 15,000 BTU A/C IPO 13,500 BTU A/C, 2nd A/C (13,500 BTU, 50A required), 8 CU FT gas/electric refrigerator, tri-fold sofa IPO jackknife sofa, LevelMatePRO leveling system*, 40" LED HD TV w/swing arm*, swing-away bumper-mounted griddle, backup observation camera.

*Included in the Cloud 9 Package 1.3



Stratus' Weather Shield features a radiant foil barrier, forced heat, enclosed underbelly, enclosed gate valves and reflective PVC roof membrane with limited 20-year warranty.



LevelMate PRO lets you level your unit on the first try! This option calculates and displays the height required to achieve a perfectly level position.



985 N 900 W | Shipshewana, IN 46565 | www.venture-rv.com

Due to continual research and advances, manufacturer reserves the right to change specifications, design, price and equipment without notice, and assumes no responsibility for any error in this literature. Some items shown are not included as standard or optional equipment.

©2020 Venture | 1/25/21 | 25M