

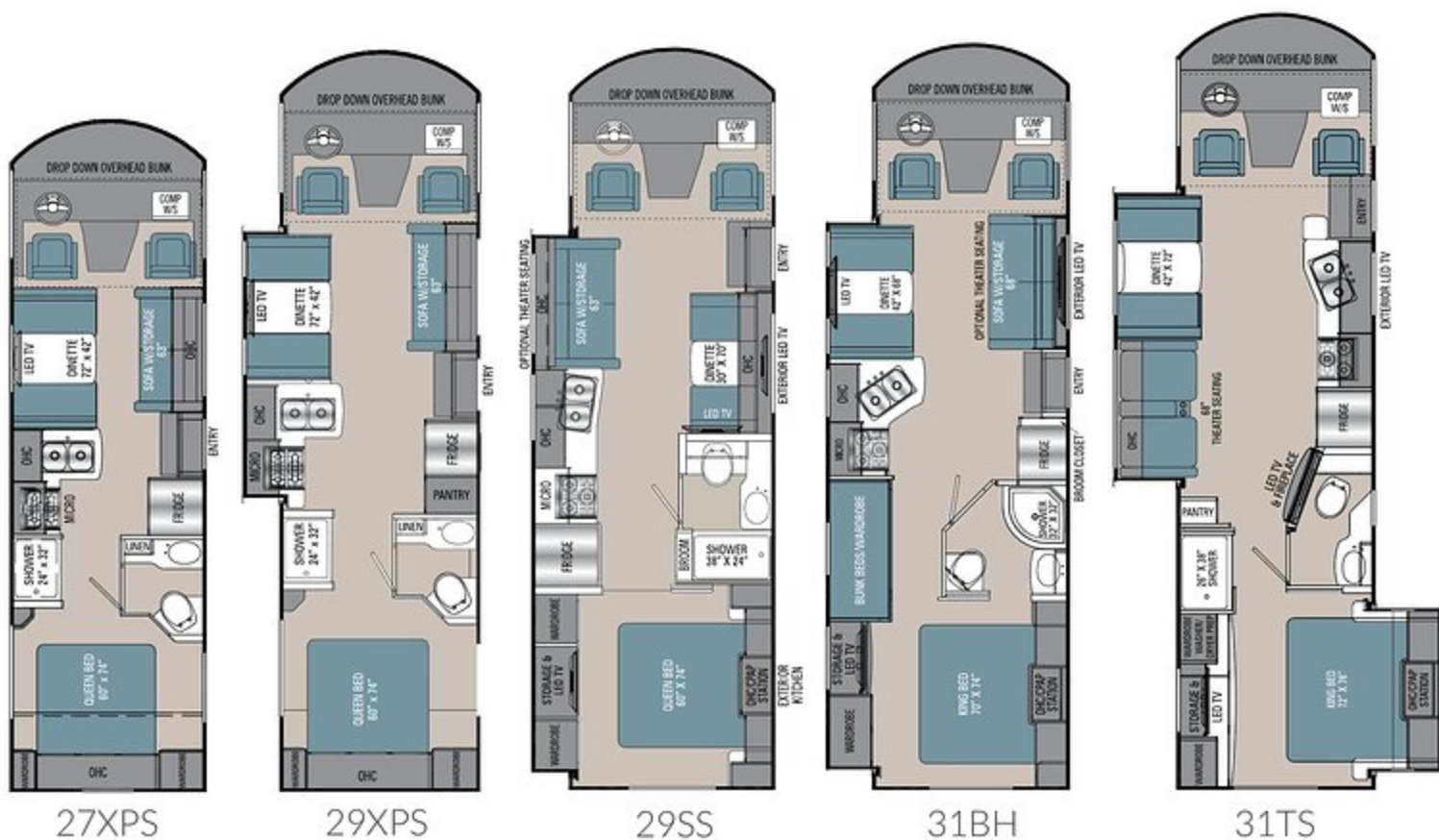
Pursuit

BY COACHMEN



SCAN HERE

To see available Standards, Options and Features!



PURSUIT SPECIFICATIONS

| CLASS A GAS | 27XPS | 29XPS | 29SS | 31BH | 31TS |
|------------------------------|----------------|----------------|----------------|----------------|----------------|
| FORD ENGINE V-8 7.3L 3-VALVE | 350 HP/468 TRQ | 350 HP/468 TRQ | 350 HP/468 TRQ | 350 HP/468 TRQ | 350 HP/468 TRQ |
| WHEEL BASE | 178" | 190" | 190" | 190" | 208" |
| GVWR | 16,000 lbs | 16,000 lbs | 18,000 lbs | 18,000 lbs | 18,000 lbs |
| GCWR | 23,000 lbs | 23,000 lbs | 23,000 lbs | 23,000 lbs | 23,000 lbs |
| GAWR FRONT | 6,500 lbs | 6,500 lbs | 7,000 lbs | 7,000 lbs | 7,000 lbs |
| GAWR REAR | 11,000 lbs | 11,000 lbs | 12,000 lbs | 12,000 lbs | 12,000 lbs |
| FUEL CAPACITY | 80 gal | 80 gal | 80 gal | 80 gal | 80 gal |
| LP GAS CAPACITY | 20 gal | 20 gal | 20 gal | 20 gal | 20 gal |
| FURNACE (BTUs) | 30,000 | 30,000 | 30,000 | 30,000 | 30,000 |
| EXTERIOR LENGTH (w/o Ladder) | 29' 0" | 31' 0" | 30' 3" | 31' 9" | 33' 0" |
| EXTERIOR HEIGHT (w/A/C) | 12' | 12' | 12' | 12' | 12' |
| EXTERIOR WIDTH | 102" | 102" | 102" | 102" | 102" |
| FRESH WATER | 50 gal | 50 gal | 50 gal | 50 gal | 50 gal |
| GREY WATER | 31 gal | 31 gal | 35 gal | 38 gal | 38 gal |
| BLACK WATER | 31 gal | 31 gal | 35 gal | 38 gal | 38 gal |
| WATER HEATER | 6 gal | 6 gal | 6 gal | 6 gal | 6 gal |
| AWNING SIZE | 16' | 16' | 20' | 20' | 17' |

GVWR (Gross Vehicle Weight Rating) is the maximum permissible weight of the unit when fully loaded. It includes all weights, inclusive of all fluids, occupants, cargo, optional equipment and accessories. For safety and product performance do NOT exceed the GVWR.

GCWR (Gross Combined Weight Rating) is the maximum permissible loaded weight of your motor home and any towed trailer or towed vehicle. Actual GCWR of this vehicle may be limited by the sum of the GVWR and the installed hitch receiver maximum capacity rating; see hitch rating label for detail.

GAWR (Gross Axle Weight Rating) is the maximum permissible weight, including cargo, fluids, optional equipment and accessories that can be safely supported by each axle.

UVW (Unloaded Vehicle Weight) * is the typical weight of the unit as manufactured at the factory. It includes all weight at the unit's axle(s), including full fuel, all fluids and LP Gas. The UVW does not include cargo, fresh potable water, additional optional equipment or dealer installed accessories.

*Estimated Average based on standard build optional equipment.

CCC (Cargo Carrying Capacity) ** is the amount of weight available for fresh potable water, cargo, passengers, additional optional equipment and accessories. CCC is equal to GVWR minus UVW. Available CCC should accommodate fresh potable water (8.3 lbs per gallon). Before filling the fresh water tank, empty the black and gray tanks to provide for more cargo capacity.

** Estimated average based on standard build optional equipment

Each Coachmen motorhome is weighed at the manufacturing facility prior to shipping. A label identifying the unloaded vehicle weight of the actual unit and the cargo carrying capacity is applied to every Coachmen motorhome prior to leaving our facilities.

The load capacity of your unit is designated by weight, not by volume, so you cannot necessarily use all available space when loading your unit.

Actual towing capacity is dependent upon your particular loading and towing circumstances, which includes the GVWR, GAWR and GCWR as well as adequate trailer brakes. Please refer to the Operator's Manual of your vehicle for further towing information.

All information contained in this brochure is believed to be accurate at the time of publication. However, during the model year, it may be necessary to make revisions and Coachmen reserves the right to make all such changes without notice, including prices, colors, materials, equipment and specifications as well as the addition of new models and the discontinuance of models shown in this brochure. Therefore, please consult with your Coachmen dealer and confirm the existence of any materials, design or specifications that are material to your purchase decision. 8/21

©Copyright 2021 Coachmen RV a Division of Forest River Inc. - All Rights Reserved.

CUSTOMER SATISFACTION



www.ForestRiverBuyLocal.com



FREE MEMBERSHIP
www.coachmenowners.com



Learn More
Scan this barcode using a QR Reader on your smart phone to learn more about Forest River.



A Berkshire Hathaway company.



24/7 EMERGENCY ROADSIDE ASSISTANCE WITH VEHICLE PURCHASE*

| | |
|----------------|-----------------|
| TOWING | WINCH-OUT |
| JUMP-STARTS | MOBILE MECHANIC |
| TIRE CHANGES | TECHNICAL |
| FLUID DELIVERY | SUPPORT |
| LOCKOUT | DEALER LOCATOR |
| SERVICE | SERVICES |



*VALID FOR 1 YEAR FROM DATE OF PURCHASE

Coachmen RV, a Division of Forest River, Inc.,
A Berkshire Hathaway Company

423 N. Main St., P.O. Box 30, Middlebury, IN 46540

To learn more about Coachmen RV and our products and see how Coachmen is making the easy life easier, visit www.coachmenrv.com