



Southwind 35K
Shown in Tradition Graphics

CHASSIS | ENGINE | TIRES

- Ford® Chassis
7.3L, 350HP Engine | 468 lb/ft Torque w/6 Speed Torq-Shift® Automatic Transmission w/Overdrive & Tow/Haul Mode
- Power Platform
- Electronic Digital Instrument Panel
- Auto Head Lights
- Standard Traction Control
- 4-Point Fully Automatic Hydraulic Leveling Jacks
- Tow Hitch Rating 5,000 - 8,000#
- Chassis Frame: Ladder Type, Single Channel
36,000psi - 50,000psi Steel, E-Coated



Chassis & Tire Sizes

34C	22K CHASSIS	235/80R 22.5" TIRES
35K	22K CHASSIS	235/80R 22.5" TIRES
36GL	26K CHASSIS	255/80R 22.5" TIRES
37F	26K CHASSIS	255/80R 22.5" TIRES

EXTERIOR

- Aerodynamic Front Cap w/Hood & Automotive Heallights
- Automotive, Bonded, One Piece Windshield
- Remote Power Heated Mirrors w/Turn Indicators, Side Cameas
- Power Entry Step w/Light
- Pass Through Storage
- Exterior Entertainment LED TV w/Bluetooth® Soundbar
- 100W Solar Panel
- Surge Protection
- 2000W Inverter
- 50 Amp Service /Whole House EMS
- 5.5kW Onan Generator w/Auto Gen Start
- Dual 15M BTU AC's w/Chill Grill and Dual Heat Pumps
- Bus-Style, Side Swing, Aluminum Luggage Doors
- Unidirectional King Controls Jack Antenna
- Premier Full Body Paint

- One Piece Fiberglass Wall w/No Luan Backer
- MultiPlex Wiring Control System w/Mobile App

INTERIOR

- Automotive Style Dash w/Dual Monitors
- Sony® Dash Stereo w/CarPlay®/Android Auto & Front Speakers
- Power Windshield Roller Shade
- Manual Day/Night Roller Shades
- Electric Fireplace (NA 36GL)
- Residential Refrigerator French Door w/Icemaker
- Two Burner Induction Cooktop
- Convection Microwave
- Solid Surface Galley Counters & Sink Covers
- Fiberglass Shower, Glass Door & Skylight
- King Bed
- CPAP Storage Ready Above Master Bed
Easy Hose Access with a 110 Volt Electrical Outlet for Power and an Automatic Night Light Inside
- WiFiRanger™ Sky4

OPTIONS

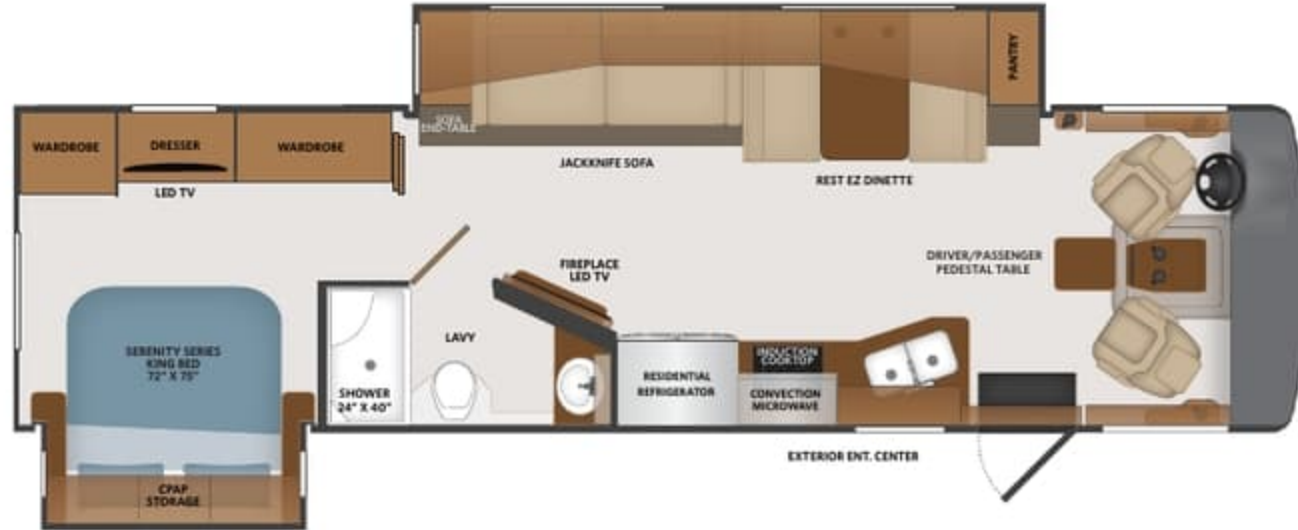
- KING® Universal Satellite System
- Garmin™ Collision Mitigation
- Exterior Stainless Accent Package
- WiFiRanger™ Sky4ProPack w/LTE
- 300W Solar Panel
- 7.0kW Onan Generator
- SumoSprings® — Front/Rear
- Liquid Spring® Suspension — Front/Rear
- Three Burner Drop In Range with Oven
- Washer/Dryer - All In One Combo (36GL)
- Rest EZ Dinette (36GL)
- Motion Power Lounge
- Manual Theater Seating (34C, 35K, 37F)
- Free Standing Dinette w/Credenza (36GL)
- Steering Stabilizer
- Hide-A-Loft™ Electric Drop Down Bed

Options: 048, 089, 096, 113, 126, 194, 209, 220, 304, 333, 435, 470, 471, 472, 580, 833

TOP FLOORPLAN FEATURES

34C

1. Sleeps up to 6
2. Open Living Area
3. Power Windshield Roller Shade
4. Two Burner Induction Cooktop
5. Rest EZ Dinette
6. 100W Solar Panel

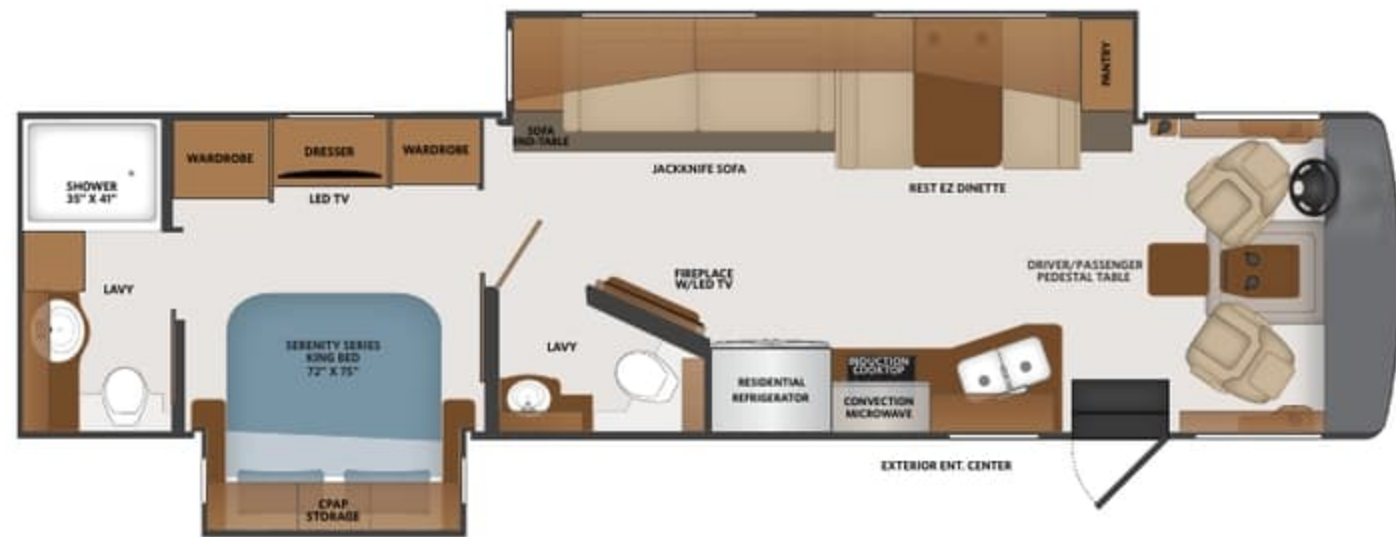


Options: 048, 089, 096, 113, 126, 194, 209, 220, 209, 304, 333, 435, 470, 471, 472, 580, 833

TOP FLOORPLAN FEATURES

35K

1. Sleeps up to 6
2. Bath-and-a-Half
3. Fiberglass Shower w/Skylight
4. Residential Galley Faucet
5. 5.5kW Onan Generator
6. One-piece Fiberglass Wall w/No Luan Backer



**SOUTHWIND
OPTIONS**

048	Exterior Stainless Steel Accent Package	194	Manual Theater Seating	471	Steering Stabilizer System
089	WiFiRanger™ Sky4ProPack w/LTE	209	Motion Power Lounge	472	Liquid Spring® Suspension — Front/Rear
096	KING® Universal Satellite System	220	Hide-A-Loft™ Electric Drop Down Bed	580	Collision Mitigation
109	Truma Tankless Water Heater	304	Solar Electrical Panel (300w)	830	Rest EZ Dinette
113	Range -3 Burner Drop-in w/Oven	333	7.0KW Generator	833	Free Standing Dinette w/Credenza
126	Washer/Dryer — All In One Combo	470	SumoSprings® - Front/Rear		

Options: 048, 089, 096, 113, 130, 194, 209, 220, 304, 333, 435, 470, 471, 472, 580, 833

NEW FLOORPLAN

TOP FLOORPLAN FEATURES

36GL

1. Sleeps up to 6
2. Adap-table® Dinette and Breakfast Bar
3. Private Master Suite
4. Open Kitchen Concept
5. His and Hers Full Length Ward w/Six Drawer Dresser
6. Sleeper Sofa Allowing Alternative Sleep Accomodations
7. Unique Lavy Design Offering Seperate Functional Spaces

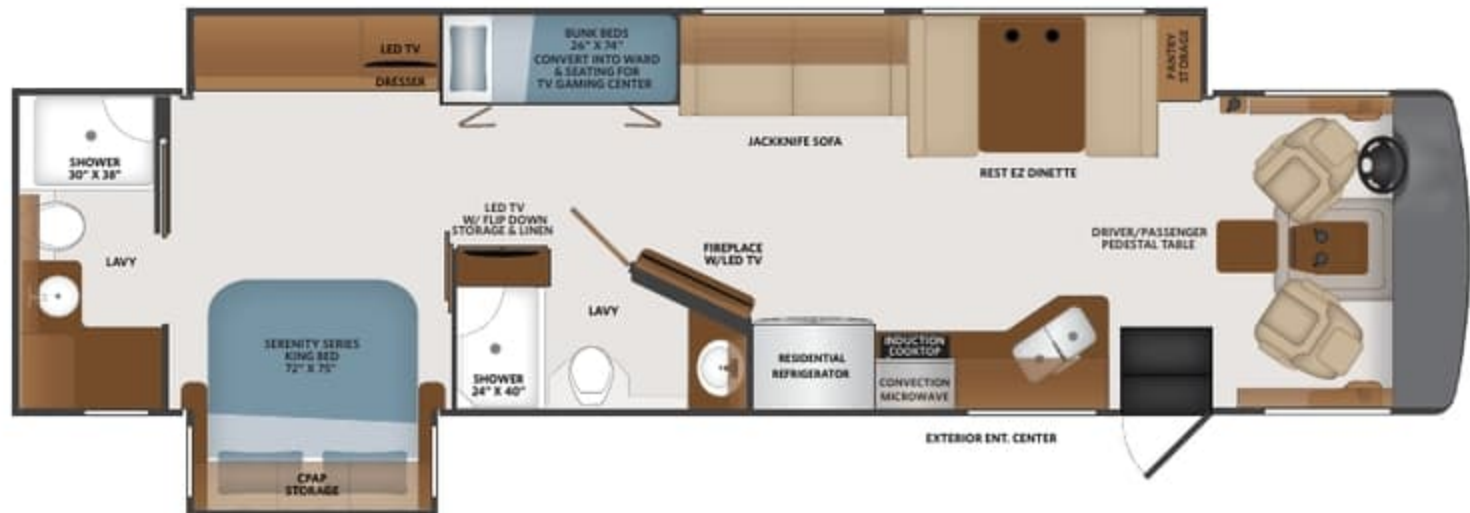


Options: 048, 089, 096, 109, 113, 126, 194, 209, 220, 304, 333, 470, 471, 472, 580

TOP FLOORPLAN FEATURES

37F

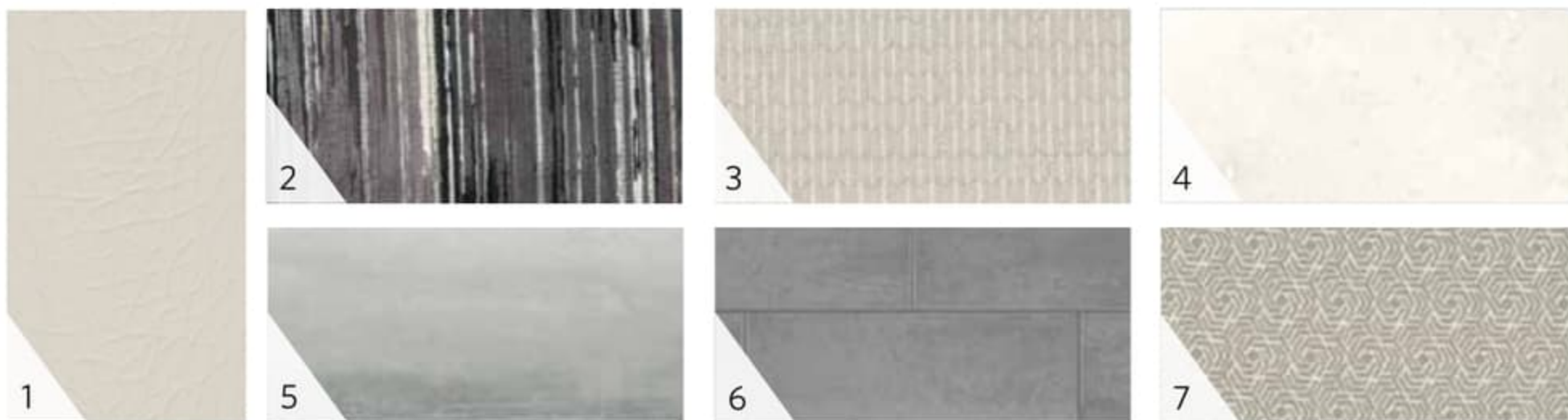
1. Sleeps up to 7
2. Two Full Baths
3. Bunk Bed converts to Wardrobe
4. Solid Surface Galley Tops with Covers
5. 4-Point Fully Automatic Hydraulic Leveling Jacks
6. Tow Hitch Rating 8,000#
7. Chassis 26,000#
8. Girard® Tankless Water Heater



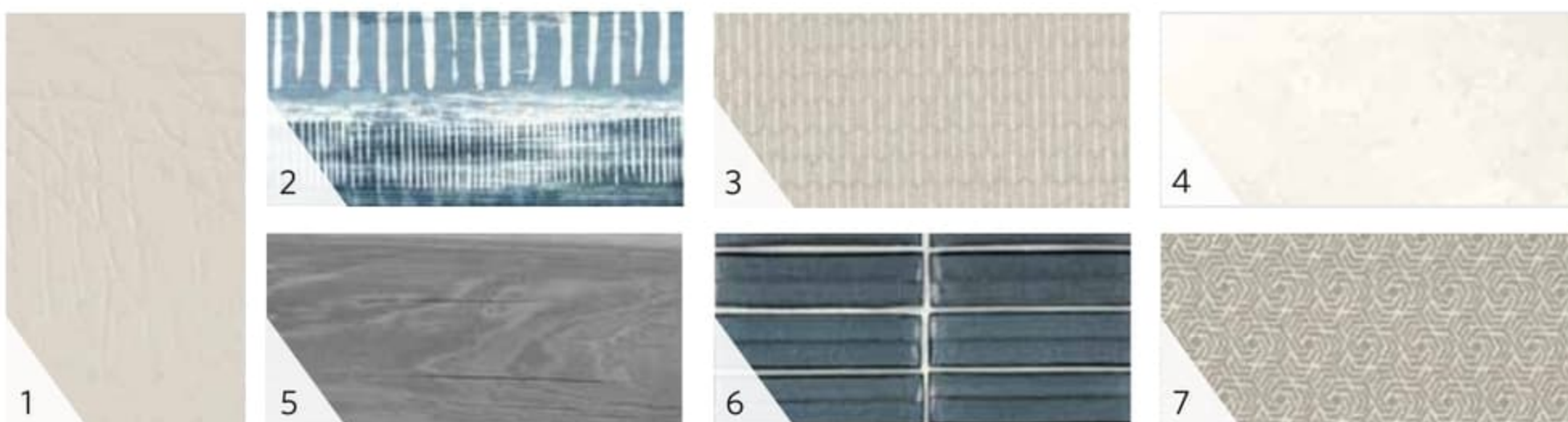
SOUTHWIND OPTIONS

048	Exterior Stainless Steel Accent Package	194	Manual Theater Seating	471	Steering Stabilizer System
089	WiFiRanger™ Sky4ProPack w/LTE	209	Motion Power Lounge	472	Liquid Spring® Suspension — Front/Rear
096	KING® Universal Satellite System	220	Hide-A-Loft™ Electric Drop Down Bed	580	Collision Mitigation
109	Truma Tankless Water Heater	304	Solar Electrical Panel (300w)	830	Rest EZ Dinette
113	Range -3 Burner Drop-in w/Oven	333	7.0KW Generator	833	Free Standing Dinette w/Credenza
126	Washer/Dryer — All In One Combo	470	SumoSprings® - Front/Rear		

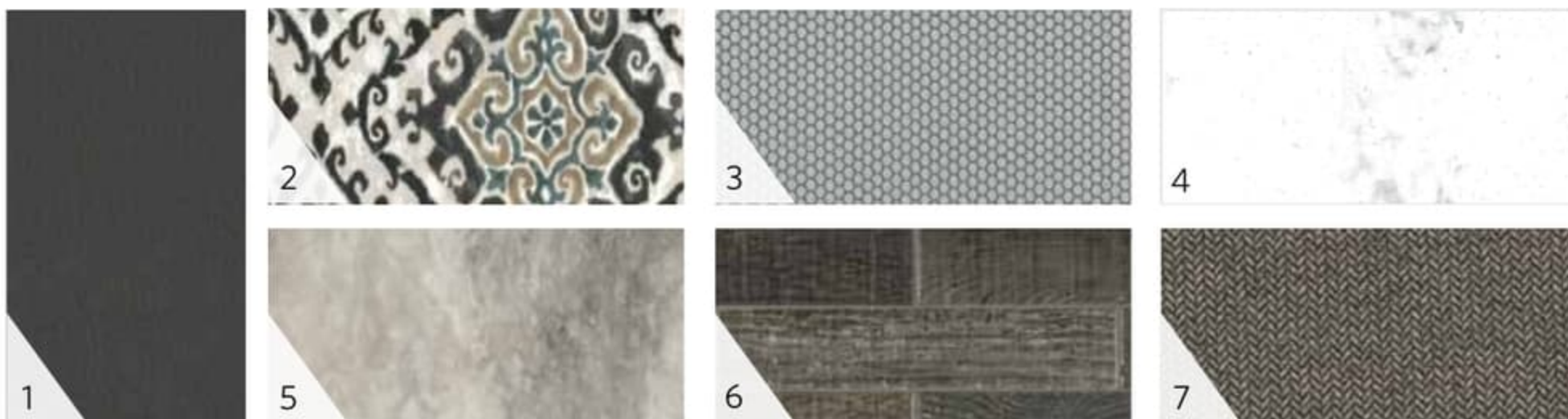
ALTITUDE



EXHALE



GUINNESS



- | | | | |
|-----------------|--------------|--------------|-----------|
| 1 SOFA | 3 BEDDING | 5 FLOORING | 7 VALANCE |
| 2 LIVING ACCENT | 4 COUNTERTOP | 6 BACKSPLASH | |



ENGLISH CHESTNUT



GREYSTONE



HERITAGE
(PAINTED CABINETRY)



WINTER FOG
(PAINTED W/GLAZED ACCENTS CABINETRY)

20
22

CLASS A GAS

SOUTHWIND GRAPHICS

FLEETWOOD RV

FleetwoodRV.com

Premium Four Color, Full Body Paint



FROSTED MELON



INDEPENDENCE



INTRIGUE



TRADITION

2022 CLASS A GAS SOUTHWIND SPECIFICATIONS



FleetwoodRV.com

CHASSIS	34C	35K	36GL - NEW	37F
Wheelbase (inches)	208"	228"	242"	242"
Front GAWR (lbs)	8,000	8,000	9,000	9,000
Rear GAWR (lbs)	15,000	15,000	17,500	17,500
GCWR (lbs)	26,000	26,000	30,000	30,000
GVWR (lbs)	22,000	22,000	26,000	26,000
Hitch Rating Weight (lbs)	5,000	5,000	8,000	8,000
Tongue Weight (lbs)	500	500	800	800
Fuel Capacity (gal)	80	80	80	80

DIMENSIONS AND CAPACITIES	34C	35K	36GL - NEW	37F
Overall Length (inches)	34' 3"	36' 3"	36' 3"	38' 9"
Overall Height (with A/C)	12' 10"	12' 10"	12' 10"	12' 10"
Overall Width (maximum)	102"	102"	102"	102"
Interior Height (maximum)	84"	84"	84"	84"
Interior Width (maximum)	96"	96"	96"	96"
Patio Awning Width (ft./in.)	17' 0"	17' 0"	17' 0"	17' 0"
Interior Storage (cu. ft.)	123	126	155	171
Exterior Storage (cu. ft.)	160	180	180	170
Fresh Water Holding Tank (gal)	100	100	100	100
Grey Water Holding Tank (gal)	58	58	58	90
Black Water Holding Tank (gal)	42	42	42	50
Appliance Propane Tank (gal) (WC)	25	25	25	25
Water Heater Tank (gal)	10	10	10	TANKLESS

FORD® CHASSIS

Model: Ford®

Engine: 7.3L Triton V8

Transmission: Ford® 6-Speed, Automatic w/Overdrive

Alternator: 175 Amp

Torque: 468 lb.-ft. @ 3,000 RPM

Horsepower: 350HP @ 3,900 RPM



All 2022 REV Recreation Group motorhomes include a limited one year/15,000-mile coach warranty and three-year/45,000-mile structural warranty, whichever occurs first, and is fully transferable for the first 12 months.

Product information, photography and illustrations included in this publication were as accurate as possible at the time of printing. For further product information and changes, please visit our website at www.fleetwoodrv.com or contact your local Fleetwood dealer. Prices, materials, design and specifications are subject to change without notice. All weights, fuel, liquid capacities and dimensions are approximate. Fleetwood RV has designed its recreational vehicles to provide a variety of uses for its customers. Each vehicle features optimal seating, sleeping, storage and fluid capacities. The user is responsible for selecting the proper combination of loads (i.e., occupants, equipment, fluids cargo, etc.) to ensure that the vehicle's capacities are not exceeded.

MODEL: SOUTHWIND ©2021 REV Group Inc. Printed in USA. Model Year 2022. 10/2021