

TRAVEL TRAILER TOY HAULERS

WORK AND PLAY



WORK HARD, PLAY HARD!



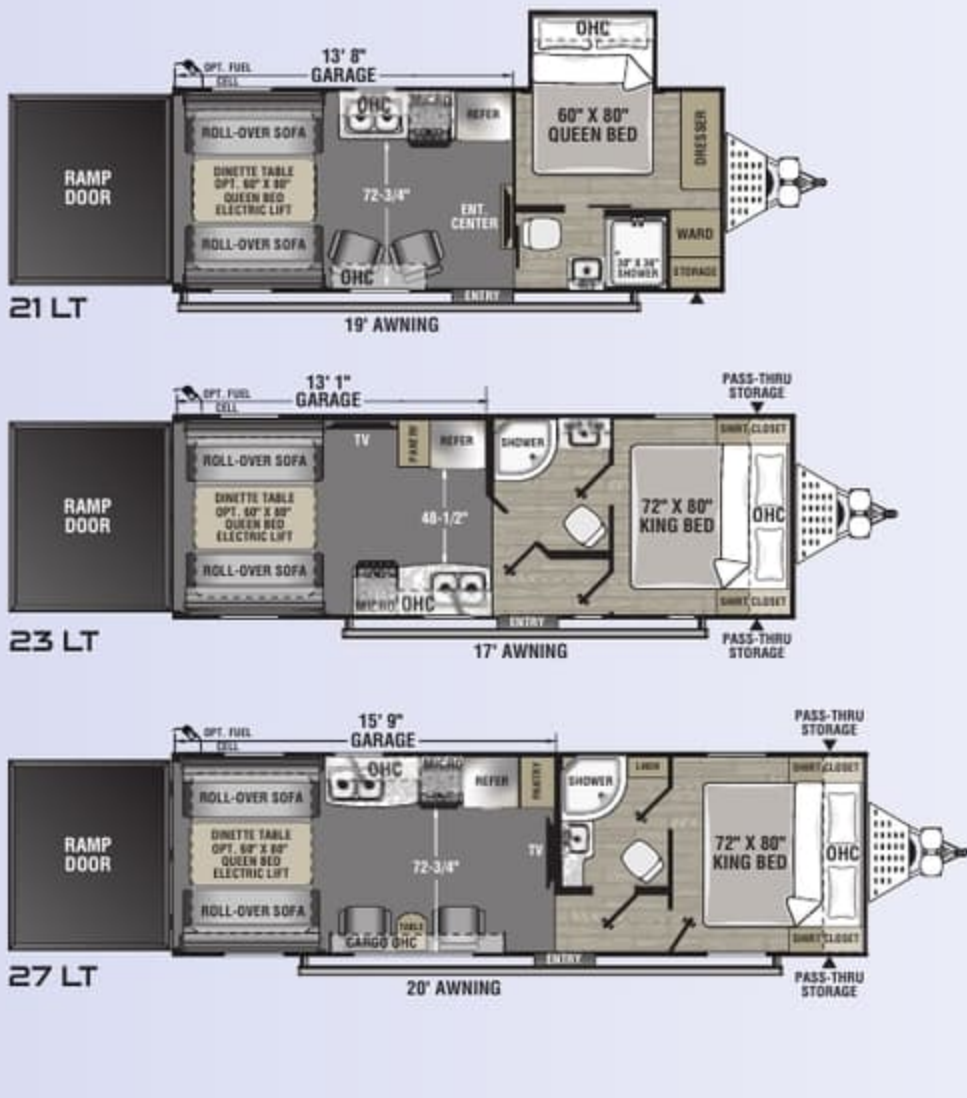
A Berkhite Hathaway company



27 KB



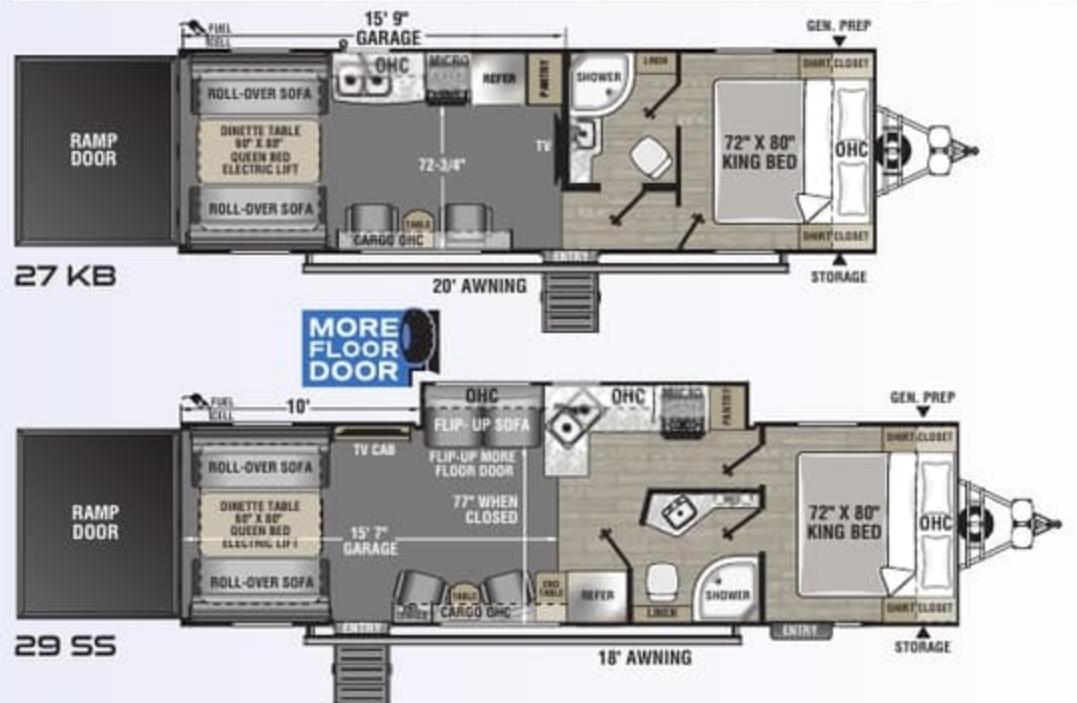
27 KB



Work and Play is a versatile Toy Hauler RV that offers it all – a relaxing home base for weekend get aways, or family trips cross country. Anytime you want to pack up for an adventure, Work and Play is ready with plenty of space for all your gear, quads or side-by-sides. Choose the well-equipped floorplan that fits your active lifestyle.



HIGH PROFILES - 91" INTERIOR CEILING HEIGHT



WORK AND PLAY	21 LT	23 LT	27 LT	27 KB	29 SS
Shipping Weight	5,690	5,752	6,730	7,428	8,582
Carrying Capacity	3,985	3,788	3,710	3,512	3,858
UVW	5,750	5,812	6,790	7,488	8,642
GVWR	9,735	9,600	10,500	11,000	12,500
Hitch Weight	935	948	1,072	1,198	1,312
Exterior Height (Includes A/C)	11'-5"	11'-3"	11'-3"	12'	12'-4"
Fresh Water Capacity (Gal.)	98	98	98	98	98
Grey Water Capacity (Gal.)	70	35	35	35	50
Waste Water Capacity (Gal.)	35	35	35	35	35
Awning Length	19'	17'	20'	20'	18'
Wheel Size	15 x 6; 6 - 5.5	15 x 6; 6 - 5.5	15 x 6; 6 - 5.5	15 x 6; 6 - 5.5	16 x 6; 6 - 5.5
Exterior Length (Bumper to Hitch)	27'-5"	29'-7"	32'-11"	32'-11"	36'-4"
Interior Height (Coach)	85"	85"	85"	91"	91"

Check out <https://forestriverinc.com/rvs/toy-haulers/work-and-play> for cargo lengths and heights. See back cover for chart definitions.



Euro Chairs – Most Floorplans



Bathroom 27 KB



Black out Roller Shades (Standard 27 KB, 29 SS)



Seamless Edge Countertops



Utensil Drawer – Most Models



Drive On Wheel Well



Cargo Rack (LTs only)



Bath Shelf and Hooks

WORK AND PLAY STANDARDS

EXTERIOR STANDARDS

- 102" Wide Body Construction
- 5" Crowned Aluminum Reinforced Full Walkable Roof
- Alumicage Construction
- Vacuum Bonded Walls w/AZDEL Composite Panels (Interior and Exterior)
- Alumina Grid HD Reinforced Laminated Floor
- Heated and Enclosed Underbelly
- Radius Entrance and Baggage Doors
- Patio Ready Ramp Door w/Cables
- Key Lock Ramp Door Latches
- Power Awning w/LED Light Strip
- Rain Gutters w/Extended Drip Spouts
- Power Tongue Jack
- Dual Battery Rack
- Black Tank Flush
- Exterior Marine Grade Speakers
- 4-Point Manual Stabilizer Jacks
- Rear Cargo Loading LED Light
- Deluxe Entry Door Assist Handle
- Satellite Prep
- Outside Spray Port
- Magnetic Compartment Door Catches
- 30 AMP Service
- Detachable Power Cord
- Rear Camera Prep
- Keyed-Alike
- RVIA

INTERIOR STANDARDS

- HD Rubberized Oil/Gas/Moisture Resistant Flooring in Garage Area

- Shaker Style Cabinets and Doors
 - Easy Glide Full Extension Ball Bearing Drawer Guides
 - Auto-Ignition Furnace w/Wall Mount Thermostat
 - Medicine Cabinet w/Shelf
 - Shower w/Surround and Glass Enclosed Doors
 - Hi-Rise Porcelain Foot Flush Toilet
 - Winterize Ready Kit
 - Ducted Furnace
 - Skylight above Shower (N/A 21 LT)
 - Utensil Drawer - Most Models
 - Dual Basin American Stonecast Sink
 - AM/FM/Bluetooth Stereo
 - Residential Bed Spread
 - Euro Recliners (21 LT, 27 LT, 27 KB, 29 SS)
 - 39" LED HD TV
 - Rear Detachable Screen
 - King Bed 72" x 80" w/Cover (Residential Queen 21 LT)
 - Bedroom TV Hookups
 - USB Charging Ports - Multiple Locations
 - 12 Volt Power Vent in bath w/Wall Switch
- EXTERIOR VALUE PACKAGE (Required)**
- 8" Mega Rail Powder Coated Chassis (10" on 29 SS)
 - One Piece Tufflex PVC Roof Membrane
 - Fiberglass Front Cap w/Rock Guard
 - Heavy Duty Dexter® Axles w/Nev-R-Adjust® Brakes and E-Z Lube®
 - Spare Tire



Rear Pull-down Screen (Standard 27 KB, 29 SS)



Electric Bed and Lift System Option (Standard 27 KB, 29 SS)



Magnetic Screen Room (Pull-down Screen Standard 27 KB, 29 SS)

- 15" Aluminum Wheels w/E-Rated Radial Tires (21 LT, 23 LT, 27 LT, 27 KB)
 - 16" Aluminum Wheels w/E-Rated Radial Tires (29 SS)
 - 15,000 BTU Ducted A/C
 - Tinted Safety Glass Windows
 - Nitrogen Filled Tires
 - LED Lighting
 - 30" Radius Entrance Door
 - 2-30 Lb LP Tanks w/Cover
 - Power Awning w/LED Light Strip
 - Winegard Air 360 and TV Antenna
 - Fantastic Fan w/Remote Wall Switch
 - Battery Disconnect
 - SafeRide RV Roadside Assistance
- INTERIOR VALUE PACKAGE (Required)**
- LED Lighting
 - Steel Secured 2500# Rated D-Rings
 - Designer Carefree Flooring in Living Area
 - 8 Cu. Ft. Refrigerator

- Microwave
 - 3 Burner Cooktop w/Oven
 - Sink Covers
 - Seamless Edge Countertops
 - 6 Gal. Gas/Electric Water Heater
 - Glass Door Inserts
- HIGH PROFILES (Standard Features 27 KB, 29 SS)**
- Zero Gravity Ramp Door
 - Aluminum Solid Step
 - 50 AMP Service
 - Pull-down Roller Night Shades
 - LED Light Strips
 - AM/FM/DVD Bluetooth Stereo w/App Control
 - Generator Prep
 - 30 Gallon Fuel Station
 - Rear Pull-down Screen
 - Electric Stabilizers and Power Tongue Jack
 - 300W Solar Panel w/MPPT Control Charger
 - Queen Size Electric Bed w/Sofas



Zero Gravity Ramp Door (Standard 27 KB, 29 SS)

OPTIONS

LT OPTIONAL EQUIPMENT

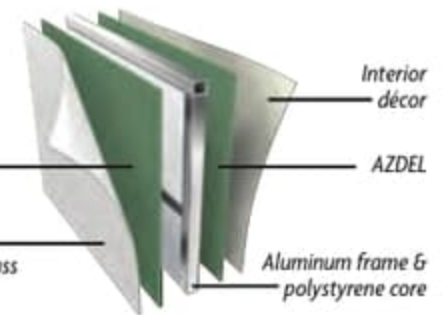
- Electric Queen Bed lift w/Sofas
- 300W Solar Panel w/MPPT Control Charger
- 30 Gallon Fuel Station
- 50 AMP Service w/Second A/C Prep
- Second 15K BTU A/C
- Ramp Door Party Patio Kit
- 10 Cu. ft. 10V Refrigerator
- CSA

HIGH PROFILES OPTIONAL EQUIPMENT (27 KB, 29 SS)

- 5.5K Onan Generator
- Second 15K BTU A/C
- Ramp Door Party Patio Kit
- 10 Cu. ft. 10V Refrigerator
- CSA



AZDEL Onboard RV composite panels create a durable, lightweight, water and temperature resistant, odorless and environmentally friendly wall that will increase the life of your RV.



3-Speed Reversible Fantastic Vent w/Wall Remote



Generator Prep (Standard 27 KB, 29 SS)



Heated & Enclosed Underbelly



300W Solar Panel w/MPPT Charger Option (Standard 27 KB, 29 SS)



Interior Speakers



Camera Prep



Medicine Cabinet



30# LP Tanks w/Cover



2500# Rated D-Rings shown w/Ultra-resistant Coin Floor



Fuel Station Option (Standard 27 KB, 29 SS)



Exterior Speakers



Stereo with front HDMI & USB Ports



Battery Disconnect



Spray Port



Ramp Door Light



Paddle Light/Vent Switches

WORK AND PLAY

TRAVEL TRAILER TOY HAULERS

WORK HARD



PLAY HARD



MORE FLOOR DOOR

This wheel expansion door accommodates wider side-by-sides. (29 SS only)



29 SS



Ramp Door Party Patio Kit Option



29 SS

Check out <https://forestriverinc.com/rvs/toy-haulers/work-and-play> for cargo lengths and heights.



24/7 EMERGENCY
ROADSIDE ASSISTANCE
WITH VEHICLE PURCHASE*

TOWING
JUMP-STARTS
TIRE CHANGES
FLUID DELIVERY
LOCKOUT
SERVICE

WINCH-OUT
MOBILE MECHANIC
TECHNICAL
SUPPORT
DEALER LOCATOR
SERVICES



*VALID FOR 1 YEAR FROM DATE OF PURCHASE

WWW.KOACARECAMPS.ORG



Fighting + Making
Cancer + Memories

GVWR (Gross Vehicle Weight Rating) - is the maximum permissible weight of the unit when fully loaded. It includes all weights, inclusive of all fluids, cargo, optional equipment and accessories. For safety and product performance do NOT exceed the GVWR.

GAWR (Gross Axle Weight Rating) - is the maximum permissible weight, including cargo, fluids, optional equipment and accessories that can be safely supported by a combination of all axles.

UVW (Unloaded Vehicle Weight)* - is the typical weight of the unit as manufactured at the factory. It includes all weight at the unit's axle(s) and tongue or pin and LP Gas. The UVW does not include cargo, fresh potable water, additional optional equipment or dealer installed accessories.

*Estimated Average based on standard build optional equipment.

CCC (Cargo Carrying Capacity)** - is the amount of weight available for fresh potable water, cargo, additional optional equipment and accessories. CCC is equal to GVWR minus UVW. Available CCC should accommodate fresh potable water (8.3 lbs per gallon). Before filling the fresh water tank, empty the black and grey tanks to provide for more cargo capacity.

**Estimated average based on standard build optional equipment.



Find us on Facebook

FREE MEMBERSHIP
to Forest River Owners' Group

www.forestriverfrog.com

Interactive Mobile Manuals

Download our Forest River mobile app or visit our dynamic online manual to enhance your ownership experience. These interactive options provide incredible ease and insight into use, maintenance and enjoyment of your Forest River product. Ranging from "How-To" videos, pictures and illustrations of various components, systems and features, to fully searchable content and downloadable PDFs for individual component owner's manuals, answers are always just a click away. View the online manual at www.forestriverinc.com/ownersmanuals, or download our FREE app from the App Store or Google Play!



Learn More
Scan this barcode using a QR Reader on your smart phone to learn more about Forest River.



A Berkshire Hathaway company.

Work and Play / 423 N Main St Middlebury IN 46540
<https://forestriverinc.com/rvs/toy-haulers/work-and-play>

YOUR WORK AND PLAY DEALER

Each Forest River RV is weighed at the manufacturing facility prior to shipping. A label identifying the unloaded vehicle weight of the actual unit and the cargo carrying capacity is applied to every Forest River RV prior to leaving our facilities. The load capacity of your unit is designated by weight, not by volume, so you cannot necessarily use all available space when loading your unit. All information contained in this brochure is believed to be accurate at the time of publication. However, during the model year, it may be necessary to make revisions and Forest River, Inc. reserves the right to make all such changes without notice, including prices, colors, materials, equipment and specifications as well as the addition of new models and the discontinuance of models shown in this brochure. Therefore, please consult with your Forest River dealer and confirm the existence of any materials, design or specifications that are material to your purchase decision.
©2023 Work and Play, a Division of Forest River, Inc., a Berkshire Hathaway company. All rights reserved. 12/21