

OUTBACK

PREMIUM TRAVEL TRAILERS • ULTRA-LITE TRAVEL TRAILERS



KEYSTONE
RV COMPANY

CAMP BETTER

OUTBACK

PREMIUM TRAVEL TRAILERS • ULTRA-LITE TRAVEL TRAILERS



KEYSTONE
RV COMPANY

CAMP BETTER

OUTBACK

THE ORIGINAL LUXURY TRAVEL TRAILER

Keystone Outback luxury travel trailers are designed for travelers who like to camp comfortably. Stylish, sophisticated and well-appointed, Keystone Outback offers the highest quality full-size and ultra-lite travel trailers. On-demand hot water heaters, grand fireplaces, impressive entertainment centers, and chef's kitchens are complemented with state-of-the-art convenience features, including an exclusive seven-point RV auto-leveling system and Keystone's new SolarFlex 200 and SolarFlex 400i solar energy packages.

Luxury features:

- On-demand hot water
- Oversized, flat-panel HDTVs
- Built-in pet kennels
- 48" fireplaces (premium models)
- Elements™ enhanced climate control
- Norco BAL extra-rugged, lightweight frame
- Comprehensive standalone convenience center
- One-touch, seven point, auto-leveling (premium models)
- Electric stabilization (ultra-lite models)



Camden decor



Linwood decor



ELEMENTS™ Climate Control

When temperatures dip or climb, Outback has you covered with features designed to keep you comfortable, extend your camping season, and combat humidity.



Norco BAL Frame

Lightweight and corrosion-resistant, these high-strength, low alloy steel frames are both powder and e-coated. Huck-bolt assembly (commonly used with over-the-road trucks) provide an extra measure of rugged durability.

NEW for 2022: Matte Black

Mixed with warm metallic finishes, rustic woods and balancing white, Outback's new Matte Black décor is simultaneously classic and current.

VISIT [KEYSTONERV.COM/OUTBACK](https://www.keystonerv.com/outback) FOR IN-DEPTH PRODUCT INFORMATION, VIDEOS, MODEL 360'S AND MORE.

SCAN HERE TO
LEARN MORE



OUTBACK

THE ORIGINAL LUXURY TRAVEL TRAILER

Keystone Outback luxury travel trailers are designed for travelers who like to camp comfortably. Stylish, sophisticated and well-appointed, Keystone Outback offers the highest quality full-size and ultra-lite travel trailers. On-demand hot water heaters, grand fireplaces, impressive entertainment centers, and chef's kitchens are complemented with state-of-the-art convenience features, including an exclusive seven-point RV auto-leveling system and Keystone's new SolarFlex 200 and SolarFlex 400i solar energy packages.

Luxury features:

- On-demand hot water
- Oversized, flat-panel HDTVs
- Built-in pet kennels
- 48" fireplaces (premium models)
- Elements™ enhanced climate control
- Norco BAL extra-rugged, lightweight frame
- Comprehensive standalone convenience center
- One-touch, seven point, auto-levelling (premium models)
- Electric stabilization (ultra-lite models)



Camden décor



Linwood décor



ELEMENTS™ Climate Control

When temperatures dip or climb, Outback has you covered with features designed to keep you comfortable, extend your camping season, and combat humidity.



Norco BAL Frame

Lightweight and corrosion-resistant, these high-strength, low alloy steel frames are both powder and e-coated. Huck-bolt assembly (commonly used with over-the-road trucks) provide an extra measure of rugged durability.

NEW for 2022: Matte Black

Mixed with warm metallic finishes, rustic woods and balancing white, Outback's new Matte Black décor is simultaneously classic and current.

VISIT [KEYSTONERV.COM/OUTBACK](https://www.keystonerv.com/outback) FOR IN-DEPTH PRODUCT INFORMATION, VIDEOS, MODEL 360'S AND MORE.

SCAN HERE TO
LEARN MORE



PREMIUM | OUTBACK TRAVEL TRAILER FLOORPLANS



328RL | Rear living, three slides, double refrigerator
WEIGHT 8702 LENGTH 37' 7"



330RL | Rear living, three slides, outside kitchen
WEIGHT 8719 LENGTH 37' 7"



NEW!
332ML | Mid-living, three slides, outside kitchen
WEIGHT 8685 LENGTH 37' 10"



335CG | Cargo garage, two slides, outside kitchen
WEIGHT 8164 LENGTH 37' 0"



340BH | Bunkhouse, three slides, outside kitchen
WEIGHT 8752 LENGTH 38' 6"

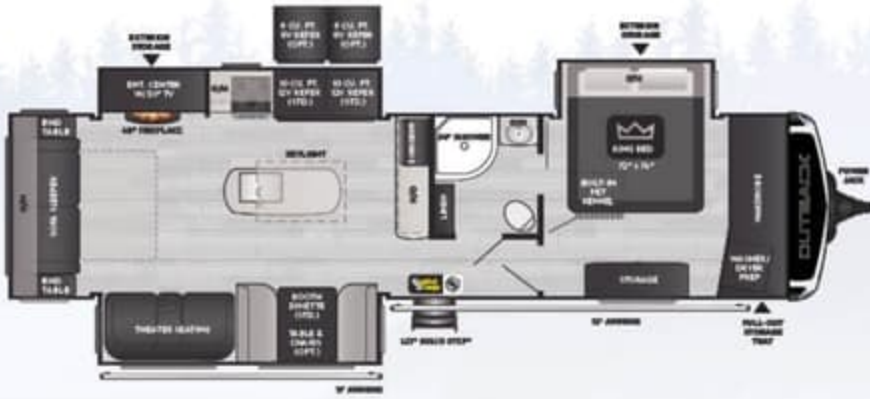


341RD | Rear den entertainment, three slides, 55" TV
WEIGHT 8410 LENGTH 38' 1"



NEW!
342CG | Cargo garage, two slides, wheelchair accessible
WEIGHT 7893 LENGTH 38' 0"

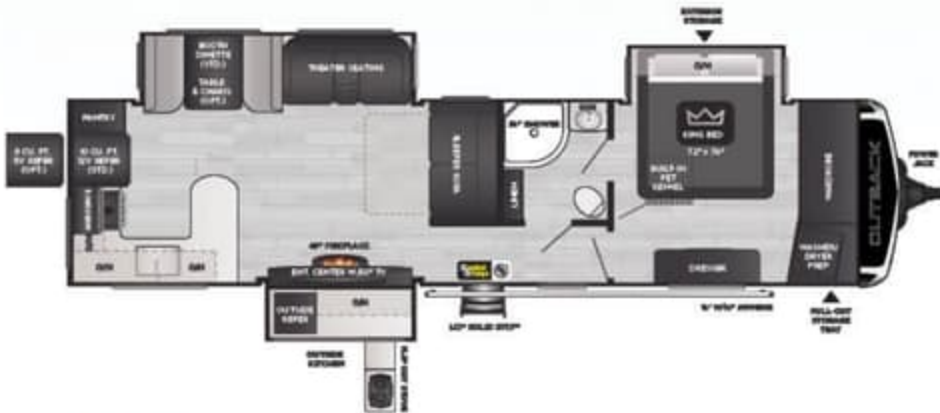
PREMIUM | OUTBACK TRAVEL TRAILER FLOORPLANS



328RL | Rear living, three slides, double refrigerator
WEIGHT 8702 LENGTH 37' 7"



330RL | Rear living, three slides, outside kitchen
WEIGHT 8719 LENGTH 37' 7"



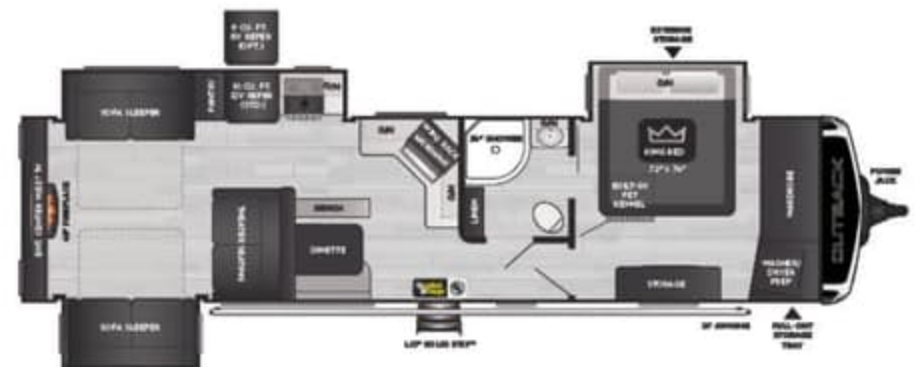
NEW!
332ML | Mid-living, three slides, outside kitchen
WEIGHT 8685 LENGTH 37' 10"



335CG | Cargo garage, two slides, outside kitchen
WEIGHT 8164 LENGTH 37' 0"



340BH | Bunkhouse, three slides, outside kitchen
WEIGHT 8752 LENGTH 38' 6"



341RD | Rear den entertainment, three slides, 55" TV
WEIGHT 8410 LENGTH 38' 1"



NEW!
342CG | Cargo garage, two slides, wheelchair accessible
WEIGHT 7893 LENGTH 38' 0"

ULTRA-LITE | OUTBACK TRAVEL TRAILER FLOORPLANS



210URS | Rear bedroom slide, double bunks, king bed
WEIGHT 4811 LENGTH 23' 4"



221UMD | Mid-dinette, rear bath, queen bed
WEIGHT 5194 LENGTH 27' 0"



240URS | Rear bedroom slide, cargo garage, king bed
WEIGHT 5401 LENGTH 28' 6"



244UBH | Double over double bunks, rear cargo door, outside kitchen
WEIGHT 5654 LENGTH 28' 11"



260UML | Mid-living room, rear kitchen, large pantry
WEIGHT 6275 LENGTH 30' 8"



291UBH | Bunkhouse, hidden pantry, outside kitchen
WEIGHT 6860 LENGTH 33' 8"



292URL | Rear living, kitchen island, large pantry
WEIGHT 7104 LENGTH 33' 11"

SCAN HERE TO
LEARN MORE



VISIT KEYSTONERV.COM/OUTBACK
FOR IN-DEPTH PRODUCT INFORMATION,
VIDEOS, MODEL 360'S AND MORE.

ULTRA-LITE | OUTBACK TRAVEL TRAILER FLOORPLANS



210URS

Rear bedroom slide, double bunks, king bed
WEIGHT 4811 LENGTH 23' 4"



221UMD

Mid-dinette, rear bath, queen bed
WEIGHT 5194 LENGTH 27' 0"



240URS

Rear bedroom slide, cargo garage, king bed
WEIGHT 5401 LENGTH 28' 6"



NEW!

244UBH

Double over double bunks, rear cargo door, outside kitchen
WEIGHT 5654 LENGTH 28' 11"



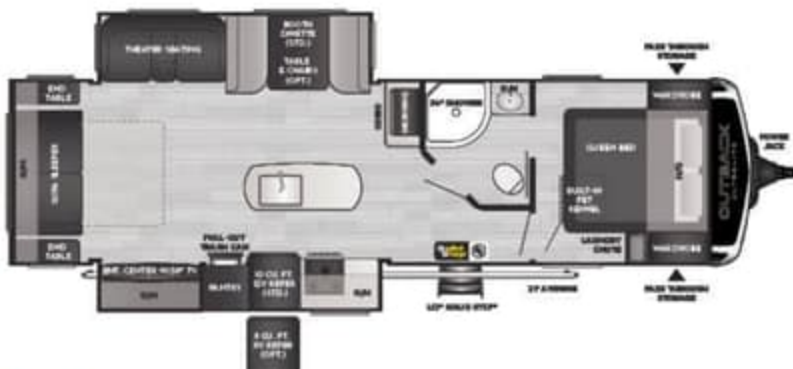
260UML

Mid-living room, rear kitchen, large pantry
WEIGHT 6275 LENGTH 30' 8"



291UBH

Bunkhouse, hidden pantry, outside kitchen
WEIGHT 6860 LENGTH 33' 8"



NEW!
292URL

Rear living, kitchen island, large pantry
WEIGHT 7104 LENGTH 33' 11"

SCAN HERE TO
LEARN MORE



VISIT KEYSTONERV.COM/OUTBACK
FOR IN-DEPTH PRODUCT INFORMATION,
VIDEOS, MODEL 360'S AND MORE.

ULTRA-LITE | OUTBACK TRAVEL TRAILER FLOORPLANS



301UBH

Rear-slide bunkhouse, 1 1/2 bath, outside kitchen
WEIGHT 7347 LENGTH 34' 9"



302UBH

Rear bunkhouse, fireplace, outside kitchen
WEIGHT 6970 LENGTH 34' 10"

OUTBACK | MODEL SPECIFICATIONS

PREMIUM TRAVEL TRAILERS

MODEL	WEIGHT	CARRYING CAPACITY	HITCH WEIGHT	FRESH WATER	WASTE WATER	GRAY WATER	LPG	LENGTH*	WIDTH	HEIGHT	AWNING
328RL	8702	1798	1075	54	38	76	60	37' 7"	8'	11' 4"	11'/13'
330RL	8719	1781	1100	54	38	76	60	37' 7"	8'	11' 4"	13'
332ML	8685	1815	1020	54	38	76	60	37' 10"	8'	11' 4"	15'
335CG	8164	2336	1155	54	38	76	60	37'	8'	11' 4"	21'
340BH	8752	1748	1040	54	38	76	60	38' 6"	8'	11' 4"	20'
341RD	8410	2090	1045	54	38	76	60	38' 1"	8'	11' 4"	21'
342CG	7893	2607	960	54	38	76	60	38' 0"	8'	11' 4"	17'

ULTRA-LITE TRAVEL TRAILERS

MODEL	WEIGHT	CARRYING CAPACITY	HITCH WEIGHT	FRESH WATER	WASTE WATER	GRAY WATER	LPG	LENGTH*	WIDTH	HEIGHT	AWNING
210URS	4811	1689	485	54	30	30	60	23' 4"	8'	11' 1"	15'
221UMD	5194	2006	600	54	30	30	60	27' 0"	8'	11' 1"	19'
240URS	5401	2189	590	54	30	30	60	28' 6"	8'	11' 1"	20'
244UBH	5654	2016	670	54	30	60	60	28' 11"	8'	11' 1"	21'
260UML	6275	1325	735	54	30	60	60	30' 8"	8'	11' 1"	21'
291UBH	6860	1340	755	54	30	60	60	33' 8"	8'	11' 1"	21'
292URL	7104	2396	730	54	30	60	60	33' 11"	8'	11' 1"	21'
301UBH	7347	2153	900	54	60	60	60	34' 9"	8'	11' 2"	20'
302UBH	6970	2530	860	54	30	60	60	34' 10"	8'	11' 2"	21'

DISCLAIMER: Product information is as accurate as possible as of the date of publication of this brochure. All features, floor plans, and specifications in this brochure are subject to change without notice. Please also consult Keystone's web site at www.keystonerv.com for more current product information and specifications. Tow Vehicle Disclaimer. CAUTION: Owners of Keystone recreational vehicles are solely responsible for the selection and proper use of tow vehicles. All customers should consult with a motor vehicle manufacturer or their dealer concerning the purchase and use of suitable tow vehicles for Keystone products. Keystone disclaims any liability or damages suffered as a result of the selection, operation, use or misuse of a tow vehicle. KEYSTONE'S LIMITED WARRANTY DOES NOT COVER DAMAGE TO THE RECREATIONAL VEHICLE OR THE TOW VEHICLE AS A RESULT OF THE SELECTION, OPERATION, USE OR MISUSE OF THE TOW VEHICLE. *Length is defined as the distance from the centerline of hitch pin/coupler to rear bumper of trailer. Please review owner's manual prior to purchase for more information on service warranties, extended use, towing and maintenance. Owner's manuals can be found at keystonerv.com.

ULTRA-LITE | OUTBACK TRAVEL TRAILER FLOORPLANS



301UBH

Rear-slide bunkhouse, 1 1/2 bath, outside kitchen
WEIGHT 7347 LENGTH 34' 9"



NEW!
302UBH

Rear bunkhouse, fireplace, outside kitchen
WEIGHT 6970 LENGTH 34' 10"

OUTBACK | MODEL SPECIFICATIONS

PREMIUM TRAVEL TRAILERS

MODEL	WEIGHT	CARRYING CAPACITY	HITCH WEIGHT	FRESH WATER	WASTE WATER	GRAY WATER	LPG	LENGTH*	WIDTH	HEIGHT	AWNING
328RL	8702	1798	1075	54	38	76	60	37' 7"	8'	11' 4"	11'/13'
330RL	8719	1781	1100	54	38	76	60	37' 7"	8'	11' 4"	13'
332ML	8685	1815	1020	54	38	76	60	37' 10"	8'	11' 4"	15'
335CG	8164	2336	1155	54	38	76	60	37'	8'	11' 4"	21'
340BH	8752	1748	1040	54	38	76	60	38' 6"	8'	11' 4"	20'
341RD	8410	2090	1045	54	38	76	60	38' 1"	8'	11' 4"	21'
342CG	7893	2607	960	54	38	76	60	38' 0"	8'	11' 4"	17'

ULTRA-LITE TRAVEL TRAILERS

MODEL	WEIGHT	CARRYING CAPACITY	HITCH WEIGHT	FRESH WATER	WASTE WATER	GRAY WATER	LPG	LENGTH*	WIDTH	HEIGHT	AWNING
210URS	4811	1689	485	54	30	30	60	23' 4"	8'	11' 1"	15'
221UMD	5194	2006	600	54	30	30	60	27' 0"	8'	11' 1"	19'
240URS	5401	2189	590	54	30	30	60	28' 6"	8'	11' 1"	20'
244UBH	5654	2016	670	54	30	60	60	28' 11"	8'	11' 1"	21'
260UML	6275	1325	735	54	30	60	60	30' 8"	8'	11' 1"	21'
291UBH	6860	1340	755	54	30	60	60	33' 8"	8'	11' 1"	21'
292URL	7104	2396	730	54	30	60	60	33' 11"	8'	11' 1"	21'
301UBH	7347	2153	900	54	60	60	60	34' 9"	8'	11' 2"	20'
302UBH	6970	2530	860	54	30	60	60	34' 10"	8'	11' 2"	21'

DISCLAIMER: Product information is as accurate as possible as of the date of publication of this brochure. All features, floor plans, and specifications in this brochure are subject to change without notice. Please also consult Keystone's web site at www.keystonerv.com for more current product information and specifications. Tow Vehicle Disclaimer. CAUTION: Owners of Keystone recreational vehicles are solely responsible for the selection and proper use of tow vehicles. All customers should consult with a motor vehicle manufacturer or their dealer concerning the purchase and use of suitable tow vehicles for Keystone products. Keystone disclaims any liability or damages suffered as a result of the selection, operation, use or misuse of a tow vehicle. KEYSTONE'S LIMITED WARRANTY DOES NOT COVER DAMAGE TO THE RECREATIONAL VEHICLE OR THE TOW VEHICLE AS A RESULT OF THE SELECTION, OPERATION, USE OR MISUSE OF THE TOW VEHICLE. *Length is defined as the distance from the centerline of hitch pin/coupler to rear bumper of trailer. Please review owner's manual prior to purchase for more information on service warranties, extended use, towing and maintenance. Owner's manuals can be found at keystonerv.com.

LAUNCHING AS STANDARD EQUIPMENT ON ALL KEYSTONE
TRAVEL TRAILERS AND FIFTH WHEELS, FALL 2021



TAKE CHARGE OF HOW YOU CAMP

The Solar Energy System You've Been Waiting For

Impossibly versatile, exceptionally designed, SolarFlex is shattering customers' expectations of factory-installed solar power. SolarFlex eliminates the guesswork to deliver affordable, high quality solar energy systems.



Learn more about the
SolarFlex difference and
packages now available.

PRINT 8.2021



KEYSTONE
RV COMPANY

CAMP BETTER

LAUNCHING AS STANDARD EQUIPMENT ON ALL KEYSTONE
TRAVEL TRAILERS AND FIFTH WHEELS, FALL 2021



SOLAR FLEX

TAKE CHARGE OF HOW YOU CAMP

The Solar Energy System You've Been Waiting For

Impossibly versatile, exceptionally designed, SolarFlex is shattering customers' expectations of factory-installed solar power. SolarFlex eliminates the guesswork to deliver affordable, high quality solar energy systems.



Learn more about the
SolarFlex difference and
packages now available.

PRINT 8.2021



KEYSTONE
RV COMPANY

CAMP BETTER