

VALENCIA

by Renegade

2022



Renegade
RV
REVGROUP

EXTREME LUXURY | EXTREME PURPOSE | EXTREME DURABILITY

Confidence to go anywhere

VALENCIA

by Renegade

2022



Renegade
RV
REVGROUP

EXTREME LUXURY | EXTREME PURPOSE | EXTREME DURABILITY

Confidence to go anywhere

Renegade VALENCIA by Renegade

Family-friendly with the glamorous details you expect from Renegade, the Valencia has everything you need for fun and luxurious getaways. Solid hardwood cabinets, polished solid surface countertops and stainless steel appliances are just a few of the beautifully designed features you will find in this RV. Modern furniture and an abundance of storage throughout allows you to travel in comfort and style with the quality that comes with a Renegade.

Featured to the right:

Here we have the very popular Valencia 38BB (Driftwood Décor shown). This floor plan provides ample sleeping with the cabover bunk feature and the rear dual bunks. The fold out couch and dinette also provide additional sleeping accommodations. The kitchen includes a full size residential refrigerator and microwave.



Renegade

VALENCIA

by Renegade

Family-friendly with the glamorous details you expect from Renegade, the Valencia has everything you need for fun and luxurious getaways. Solid hardwood cabinets, polished solid surface countertops and stainless steel appliances are just a few of the beautifully designed features you will find in this RV. Modern furniture and an abundance of storage throughout allows you to travel in comfort and style with the quality that comes with a Renegade.

Featured to the right:

Here we have the very popular Valencia 38BB (Driftwood Décor shown). This floor plan provides ample sleeping with the cabover bunk feature and the rear dual bunks. The fold out couch and dinette also provide additional sleeping accommodations. The kitchen includes a full size residential refrigerator and microwave.







THE *Renegade* VALENCIA AT A GLANCE

Exterior height	12'10"	Fuel capacity	100 Gallons
Exterior width	99¼"	Fresh water capacity	150 Gallons
Exterior length	35'8" - 38'2"	Grey water capacity	75 Gallons
Interior height	84"	Black water capacity	75 Gallons
Interior width	95½"	LP tank	20 Gallons
		DEF	10 Gallons



KEY FEATURES

- 360HP w/ 3000MH Allison Transmission
- Multiplex system with color touch panel & Bluetooth app control
- Four full paint color options
- Four-Point automatic hydraulic leveling system
- Electric lateral arm awning with integrated LED lights
- Solid hardwood cabinets and solid surface countertops

THE *Renegade* VALENCIA AT A GLANCE

Exterior height	12'10"	Fuel capacity	100 Gallons
Exterior width	99¼"	Fresh water capacity	150 Gallons
Exterior length	35'8" - 38'2"	Grey water capacity	75 Gallons
Interior height	84"	Black water capacity	75 Gallons
Interior width	95½"	LP tank	20 Gallons
		DEF	10 Gallons



KEY FEATURES

- 360HP w/ 3000MH Allison Transmission
- Multiplex system with color touch panel & Bluetooth app control
- Four full paint color options
- Four-Point automatic hydraulic leveling system
- Electric lateral arm awning with integrated LED lights
- Solid hardwood cabinets and solid surface countertops



Wheelbase 249"

35MB 35' mid bath, 2 slides



Wheelbase 279"

38BB 38' mid bath, bunk beds, 2 slides



Wheelbase 279"

38RB 38' mid and rear bath, 2 slides



Wheelbase 279"

38RW 38' mid bath, rear wardrobe closet, 2 slides



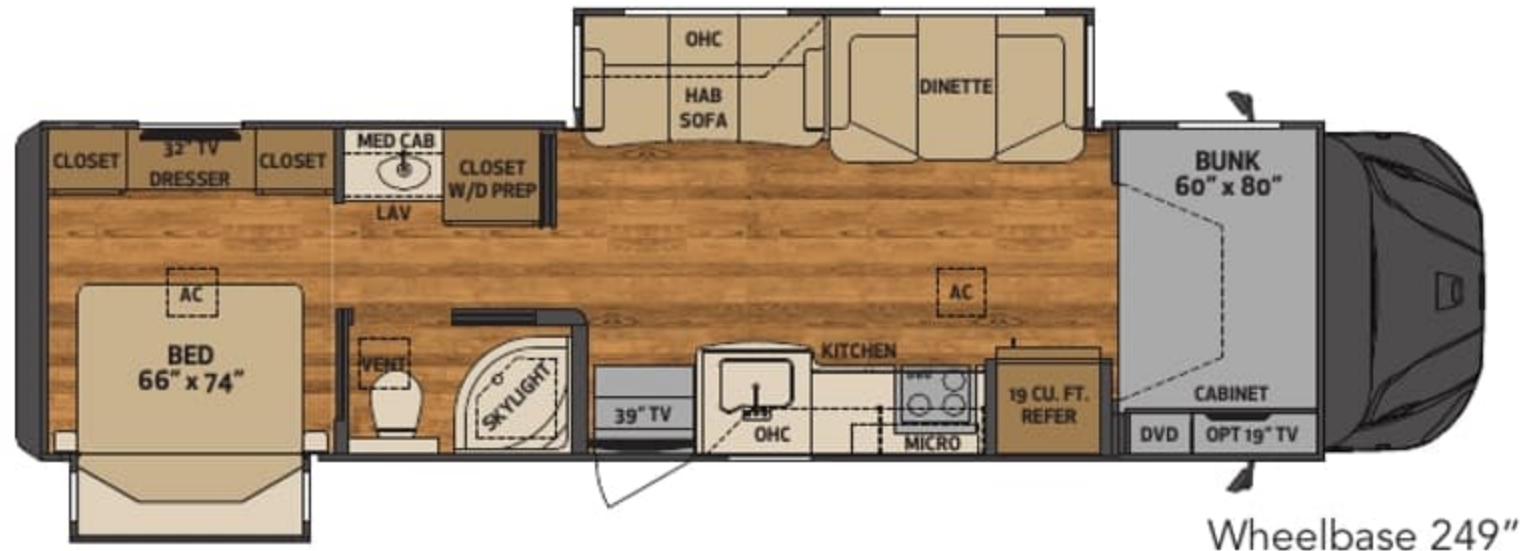
ICED LATTE



CRACKED PEPPER

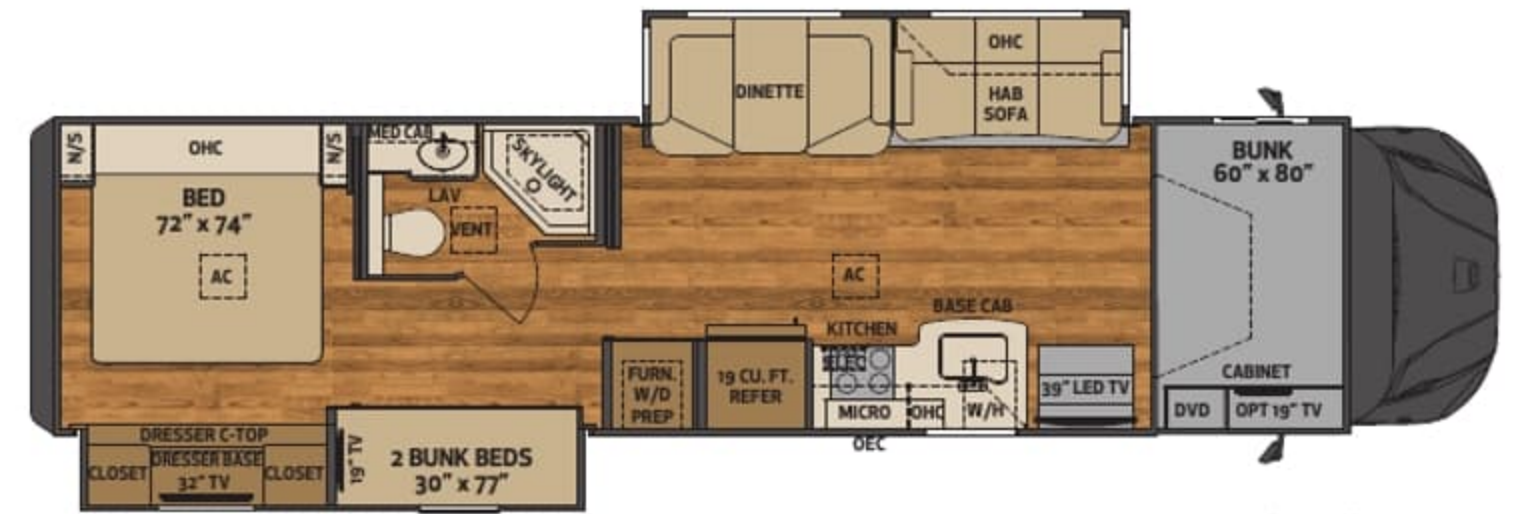


DRIFTWOOD



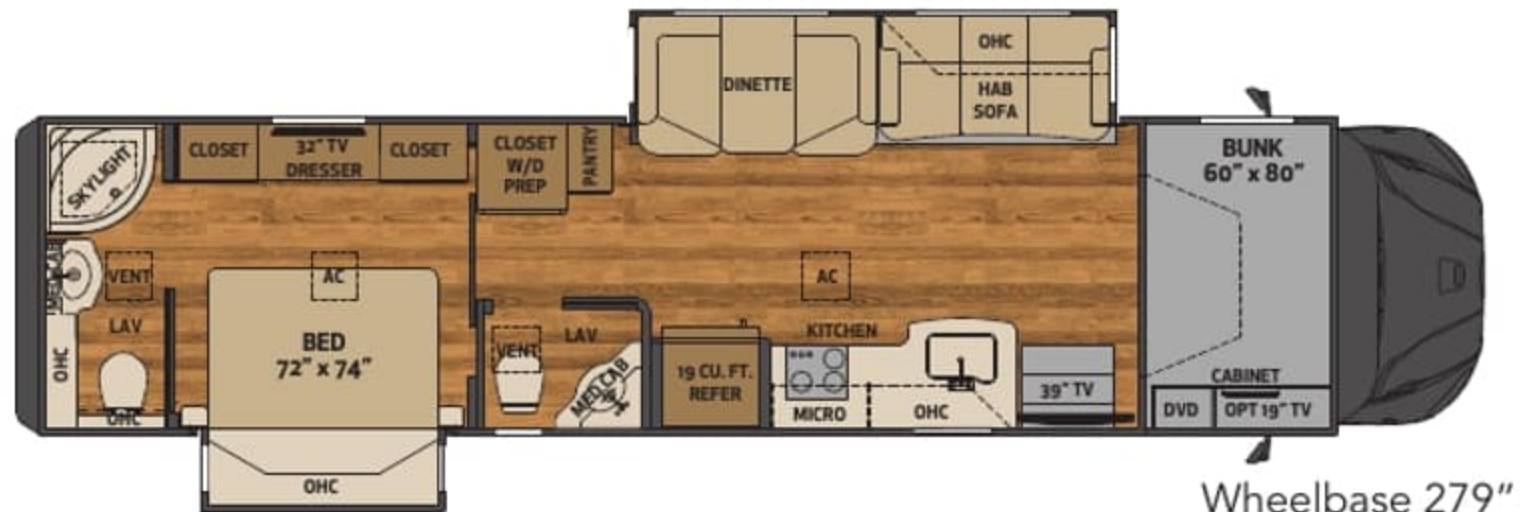
Wheelbase 249"

35MB 35' mid bath, 2 slides



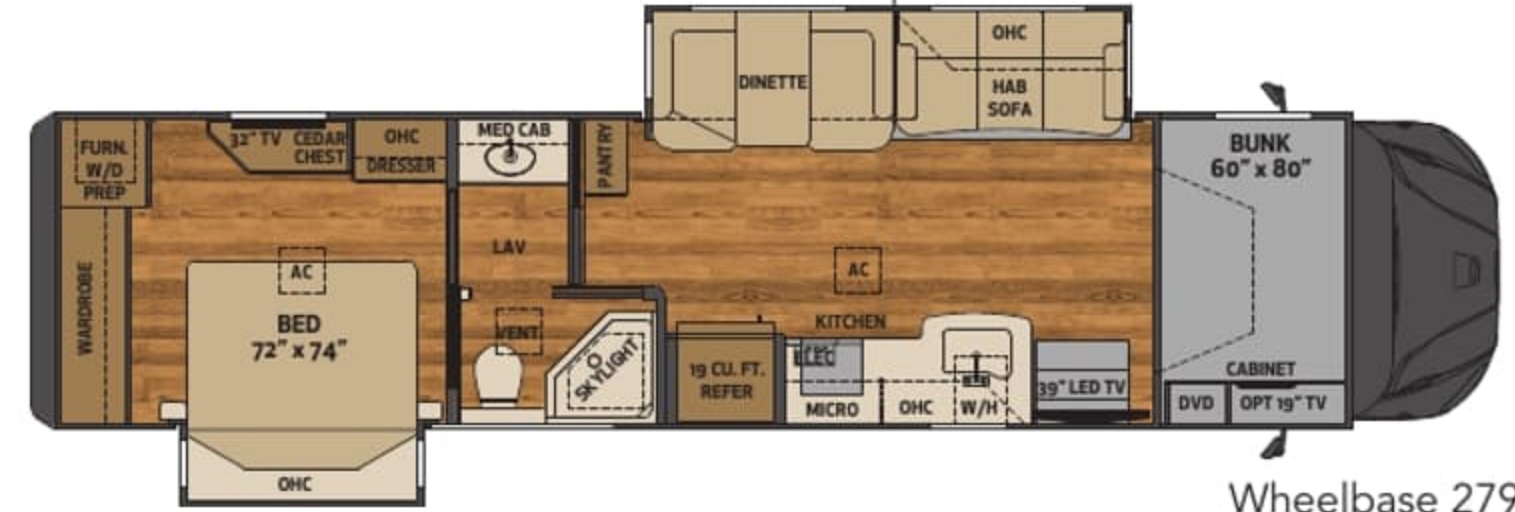
Wheelbase 279"

38BB 38' mid bath, bunk beds, 2 slides



Wheelbase 279"

38RB 38' mid and rear bath, 2 slides



Wheelbase 279"

38RW 38' mid bath, rear wardrobe closet, 2 slides



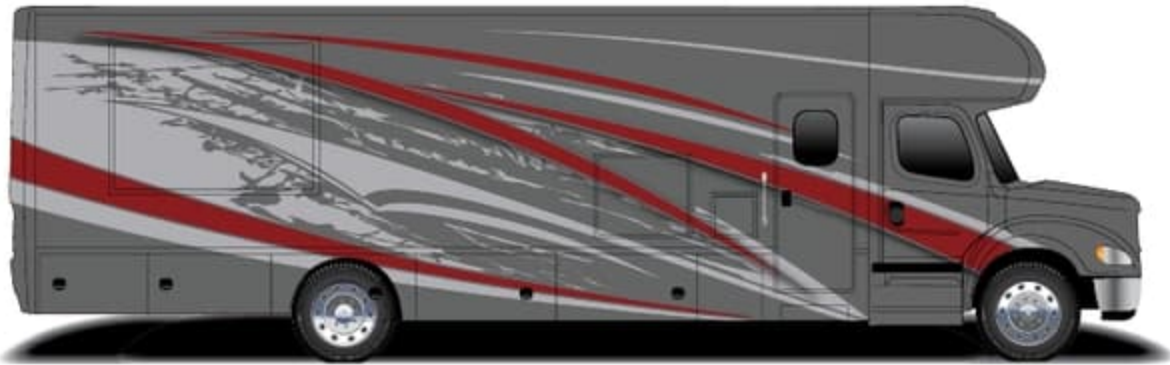
ICED LATTE



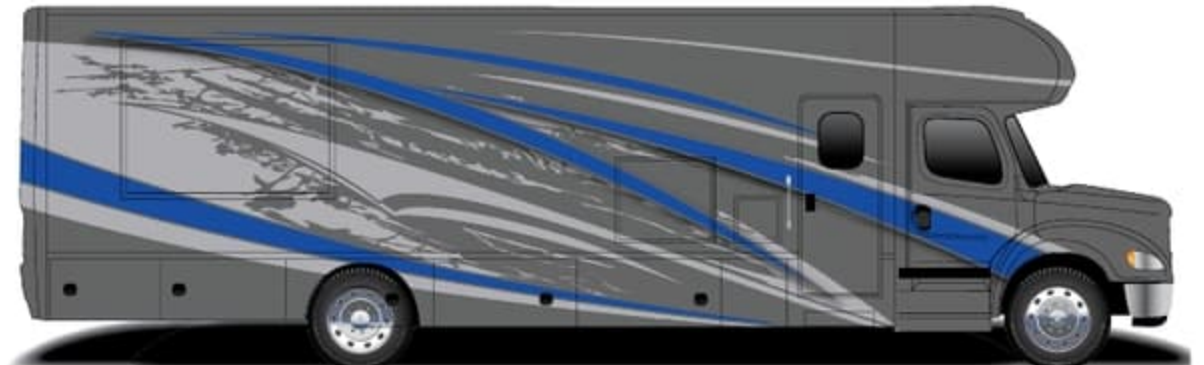
CRACKED PEPPER



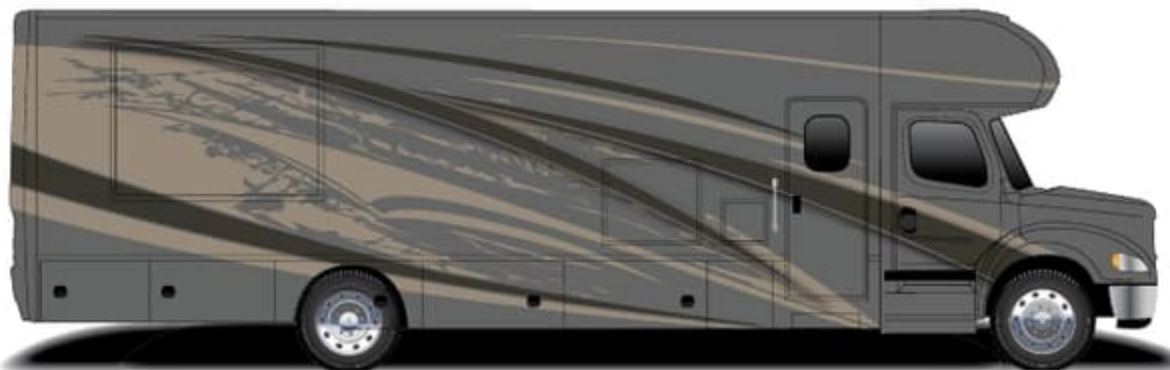
DRIFTWOOD



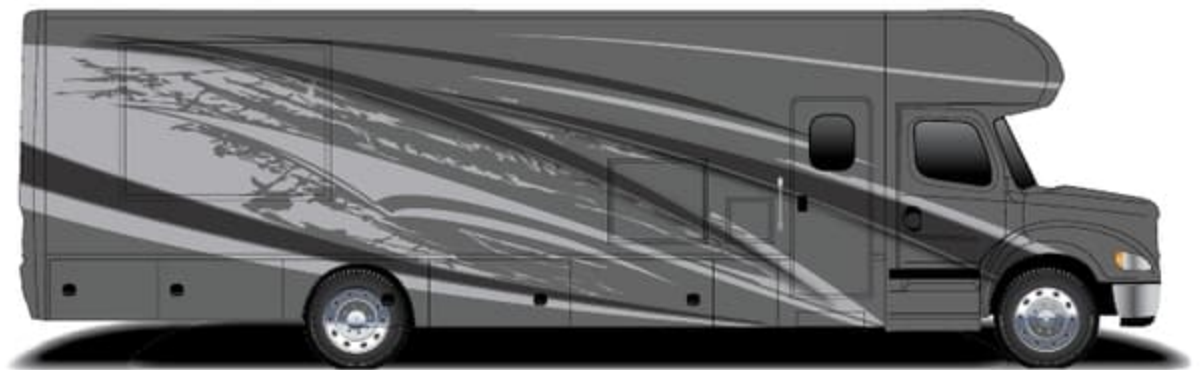
CRIMSON



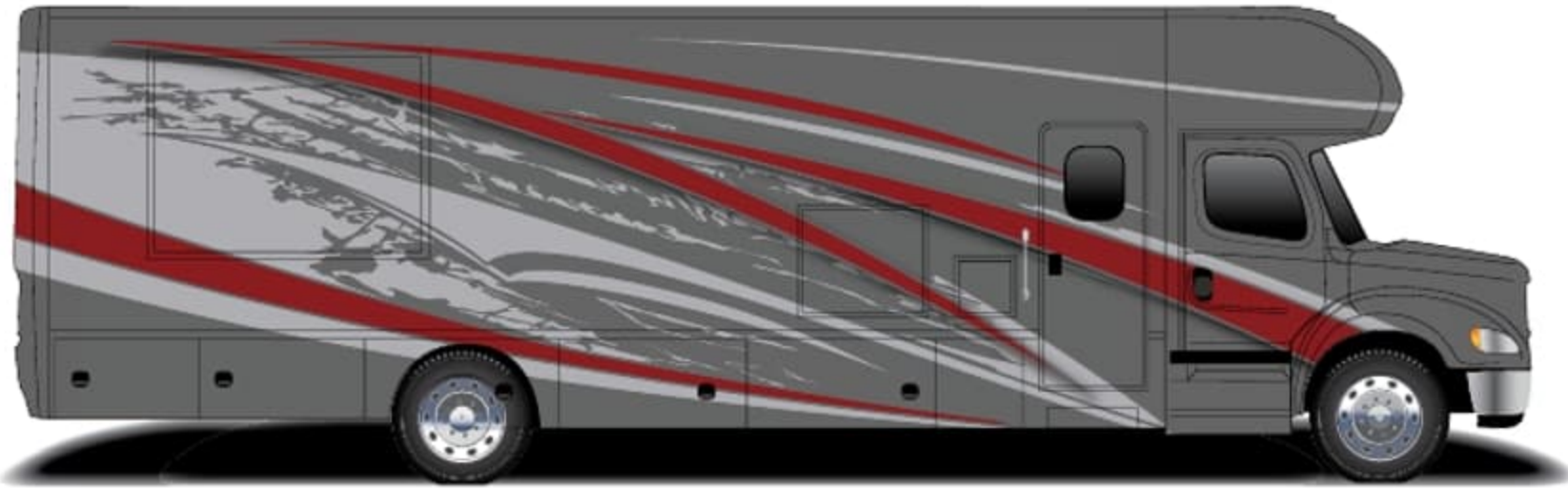
ROYAL



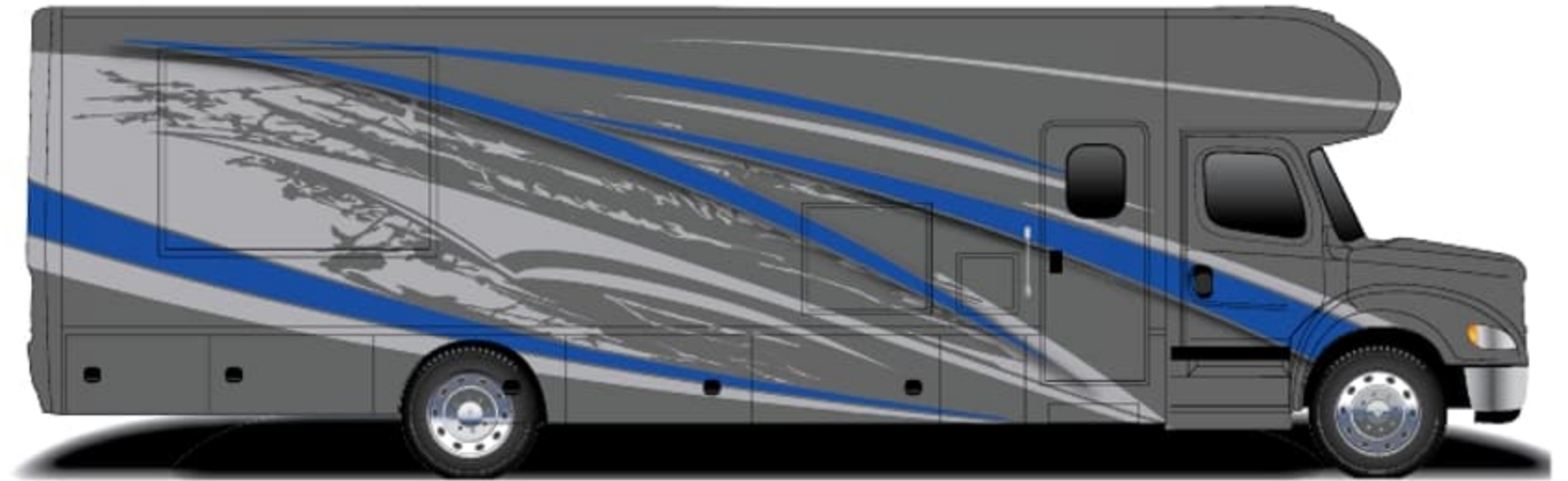
RUSSET



GRAPHITE



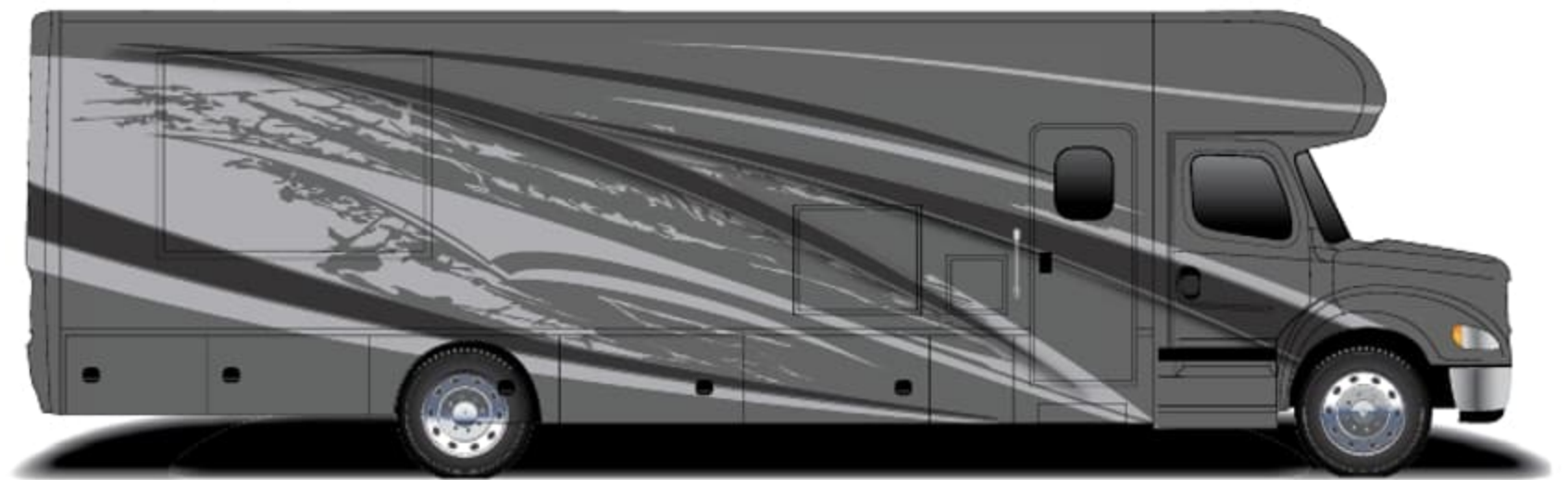
CRIMSON



ROYAL



RUSSET



GRAPHITE

CAB/CHASSIS

Freightliner chassis S2RV 33,000 lb. GVWR, 46,000 lb. GCWR
Cummins ISB 6.7L 360HP, 800 lb. ft. torque
Allison 3000MH 6-speed automatic transmission with
electronic push button shifter
Cummins VG engine braking with dash switch
Aluminum cab construction designed for occupant protection
One-piece panoramic cab windshield
Premium Freightliner heat/sound insulation package
Freightliner heavy duty chromed steel 3 piece front bumper
LED headlight assemblies
Power windows and door locks
Power/heated remote control mirrors
Tilt & telescoping steering wheel w/ electronic cruise control
Air ride driver and passenger seat pedestals with swivels
Soft touch driver/passenger seats w/ armrests
Full cab mat
Single 100 gallon fuel tank with side mounted fill - driver side
Airliner rear air ride suspension
Auxiliary air chuck and hose

CONSTRUCTION

2" vacuum bond laminated sidewalls w/ welded tubular
aluminum framing
Welded tubular aluminum roof truss system w/ framed cutouts
One piece crowned fiberglass roof surface
"Super Sandwich" floor construction w/ galvanized vapor
barrier includes:
• 3/4" fir plywood deck over 2 x 4 wood-framed
residential floor
• 2" welded steel floor joist system
• Mounted to 3" steel longitudinal floor beams
• 3.5" premium grade sound deadening and thermal
insulation in floor

EXTERIOR

Powder-coated steel storage compartments w/ carpeted lining
Exterior entry door assist handle
RV entrance door w/ screen, deadbolt, frameless window,
& pleated shade
Girard GG lateral arm electric awning w/ LED lights
Aluminum wrapped auto deploy/retract awnings over all
slide outs
12,000 lb. hitch, 7 way tow connector
LED brake, turn & high mount brake lights
Fiberglass molded cab entry steps

ELECTRICAL SYSTEMS

8KW Onan quiet diesel generator
Automatic generator start system
3,000W magnum hybrid inverter
(1) 8D AGM house battery
Multiplex lighting system with smartphone app
Solar charging system pre-wire
Central command center cabinet
50 amp electrical panel
12V holding tank heaters, grey & black tanks

INTERIOR

Soft touch sofa with queen size slide-a-bed sleeper
Soft touch dinette w/ convertible bed & solid surface table top
Premium vinyl flooring throughout
Premium hardwood cabinets w/shaker style doors
Satin nickel cabinet door and drawer pulls
Soft close full extension ball bearing drawer guides throughout
slide-out pantry with adjustable shelves (select floorplans)
Polished solid surface countertops throughout
Stonecast deep bowl kitchen sink with solid surface covers
Glass tile backsplash
LED wall and dinette décor lighting
Manual day/night roller shades
Energy efficient LED flush mount ceiling lighting throughout
Decorative vinyl wall covering with coordinating accent color
in slide rooms
Designer bedspread w/ pillows
iRelax memory foam mattress (66" x 74" mini king-MB only)
(72" x 74" king-all except MB)
60" x 80" sliding cabover bunk sleeper with R/S window
and media cabinet
Full length wardrobe w/removable bottom shelf & shoe
storage (select floorplans)

APPLIANCES

18.0 cu.ft. residential stainless steel refrigerator with icemaker
Recessed sealed 3 burner stainless steel LP cooktop
Stainless steel convection microwave oven
35,000 BTU LP gas furnace with electronic ignition
10 gal. gas/electric water heater
(2) 15,000 BTU low profile roof A/C w/heat pumps,
plumbed condensation lines
Ducted heating and air conditioning
Pre-wired & plumbed for optional washer/dryer
Carbon monoxide, LP & smoke detectors, fire extinguisher
Winterization kit

BATH

Deluxe hardwood vanity and medicine storage cabinets
Fiberglass shower with glass door
Shower skylight
12V high capacity on demand water pump
Whole house water filtration system
Polished solid surface countertop w/ solid surface sink
Deluxe satin nickel bath faucet & adjustable shower head

ENTERTAINMENT SYSTEM

Garmin touch screen, bluetooth, GPS, RV maps and
color camera monitor
Upgraded cab sound system - JBL 5.25" Dash and
6.25" ceiling speakers
Sirius/XM ready (requires customer subscription)
Color rear and side view cameras
Soundbar home theater w/ bluetooth streaming and
wireless subwoofer
40" LED TV in living area / 32" LED TV in bedroom
BluRay DVD player with remote in living area
Ext. Ent. Ctr. w/ 32" LED TV w/ soundbar on swivel,
USB charging
Exterior park cable hookup
Rooftop antenna with standard and HD signal capability
Pre-wired for In-motion and HD rooftop satellite systems
(boxes not included, TV & radio services requires
customer subscription)

POPULAR OPTIONS

Theater seating
Storage ottoman
Three roof-mounted 175 watt (each) solar panels
Table with credenza and free standing dinette chairs
Premium one-piece vinyl floor in bedroom
Winegard In-motion satellite system
Winegard Trav'ler satellite system
LP quick disconnect LP line for gas grill
24" LED TV in cabover bed area
Brake controller
Diamond shield paint protection
13cu.ft. propane refer
W/D stack
Winegard 2.0 Antenna w/ Wi-Fi etc.

CAB/CHASSIS

Freightliner chassis S2RV 33,000 lb. GVWR, 46,000 lb. GCWR
 Cummins ISB 6.7L 360HP, 800 lb. ft. torque
 Allison 3000MH 6-speed automatic transmission with
 electronic push button shifter
 Cummins VG engine braking with dash switch
 Aluminum cab construction designed for occupant protection
 One-piece panoramic cab windshield
 Premium Freightliner heat/sound insulation package
 Freightliner heavy duty chromed steel 3 piece front bumper
 LED headlight assemblies
 Power windows and door locks
 Power/heated remote control mirrors
 Tilt & telescoping steering wheel w/ electronic cruise control
 Air ride driver and passenger seat pedestals with swivels
 Soft touch driver/passenger seats w/ armrests
 Full cab mat
 Single 100 gallon fuel tank with side mounted fill - driver side
 Airliner rear air ride suspension
 Auxiliary air chuck and hose

CONSTRUCTION

2" vacuum bond laminated sidewalls w/ welded tubular
 aluminum framing
 Welded tubular aluminum roof truss system w/ framed cutouts
 One piece crowned fiberglass roof surface
 "Super Sandwich" floor construction w/ galvanized vapor
 barrier includes:

- 3/4" fir plywood deck over 2 x 4 wood-framed residential floor
- 2" welded steel floor joist system
- Mounted to 3" steel longitudinal floor beams
- 3.5" premium grade sound deadening and thermal insulation in floor

EXTERIOR

Powder-coated steel storage compartments w/ carpeted lining
 Exterior entry door assist handle
 RV entrance door w/ screen, deadbolt, frameless window,
 & pleated shade
 Girard GG lateral arm electric awning w/ LED lights
 Aluminum wrapped auto deploy/retract awnings over all
 slide outs
 12,000 lb. hitch, 7 way tow connector
 LED brake, turn & high mount brake lights
 Fiberglass molded cab entry steps

ELECTRICAL SYSTEMS

8KW Onan quiet diesel generator
 Automatic generator start system
 3,000W magnum hybrid Inverter
 (1) 8D AGM house battery
 Multiplex lighting system with smartphone app
 Solar charging system pre-wire
 Central command center cabinet
 50 amp electrical panel
 12V holding tank heaters, grey & black tanks

INTERIOR

Soft touch sofa with queen size slide-a-bed sleeper
 Soft touch dinette w/ convertible bed & solid surface table top
 Premium vinyl flooring throughout
 Premium hardwood cabinets w/shaker style doors
 Satin nickel cabinet door and drawer pulls
 Soft close full extension ball bearing drawer guides throughout
 slide-out pantry with adjustable shelves (select floorplans)
 Polished solid surface countertops throughout
 Stonecast deep bowl kitchen sink with solid surface covers
 Glass tile backsplash
 LED wall and dinette décor lighting
 Manual day/night roller shades
 Energy efficient LED flush mount ceiling lighting throughout
 Decorative vinyl wall covering with coordinating accent color
 in slide rooms
 Designer bedspread w/ pillows
 iRelax memory foam mattress (66" x 74" mini king-MB only)
 (72" x 74" king-all except MB)
 60" x 80" sliding cabover bunk sleeper with R/S window
 and media cabinet
 Full length wardrobe w/removable bottom shelf & shoe
 storage (select floorplans)

APPLIANCES

18.0 cu.ft. residential stainless steel refrigerator with icemaker
 Recessed sealed 3 burner stainless steel LP cooktop
 Stainless steel convection microwave oven
 35,000 BTU LP gas furnace with electronic ignition
 10 gal. gas/electric water heater
 (2) 15,000 BTU low profile roof A/C w/heat pumps,
 plumbed condensation lines
 Ducted heating and air conditioning
 Pre-wired & plumbed for optional washer/dryer
 Carbon monoxide, LP & smoke detectors, fire extinguisher
 Winterization kit

BATH

Deluxe hardwood vanity and medicine storage cabinets
 Fiberglass shower with glass door
 Shower skylight
 12V high capacity on demand water pump
 Whole house water filtration system
 Polished solid surface countertop w/ solid surface sink
 Deluxe satin nickel bath faucet & adjustable shower head

ENTERTAINMENT SYSTEM

Garmin touch screen, bluetooth, GPS, RV maps and
 color camera monitor
 Upgraded cab sound system - JBL 5.25" Dash and
 6.25" ceiling speakers
 Sirius/XM ready (requires customer subscription)
 Color rear and side view cameras
 Soundbar home theater w/ bluetooth streaming and
 wireless subwoofer
 40" LED TV in living area / 32" LED TV in bedroom
 BluRay DVD player with remote in living area
 Ext. Ent. Ctr. w/ 32" LED TV w/ soundbar on swivel,
 USB charging
 Exterior park cable hookup
 Rooftop antenna with standard and HD signal capability
 Pre-wired for In-motion and HD rooftop satellite systems
 (boxes not included, TV & radio services requires
 customer subscription)

POPULAR OPTIONS

Theater seating
 Storage ottoman
 Three roof-mounted 175 watt (each) solar panels
 Table with credenza and free standing dinette chairs
 Premium one-piece vinyl floor in bedroom
 Winegard In-motion satellite system
 Winegard Trav'ler satellite system
 LP quick disconnect LP line for gas grill
 24" LED TV in cabover bed area
 Brake controller
 Diamond shield paint protection
 13cu.ft. propane refer
 W/D stack
 Winegard 2.0 Antenna w/ Wi-Fi etc.

RENEGADE WARRANTY

Renegade MY 2022 motorhomes are covered by a 1-year unlimited miles limited warranty, plus a 3-year 36,000-mile limited structural warranty.

All Renegade motorhome chassis, engines and transmissions, and drivetrain warranties are provided and administered by their respective manufacturers.

For specific information about these warranties, ask your dealer or contact Renegade RV.



CELEBRATING 25 YEARS OF EXTREME LUXURY AND ADVENTURE



In celebration of 25 years, Renegade is offering a special 25th anniversary edition option of the Valencia.

Special Features Include:

- 25th Anniversary Paint Scheme with Special Edition Logo
- Limited Edition Unit # Badge
- Chrome Compartment Door Handles
- Custom 25th Anniversary Mudflap
- Custom 25th Wheel Hub Insert
- Embroidered Cab Seat Headrest
- 25th Anniversary Throw Pillows (2X)
- 25th Anniversary Slide Fascia Badging
- 25th Anniversary Multiplex Badging
- Pair of 25th "Proud Owner" Hats and Soft Shell Jackets

(Limited Availability)



Confidence to go anywhere

52216 SR 15 Bristol, IN 46507

888.522.1126 | RenegadeRV.com

Features and options may vary from descriptions without notice.

RENEGADE WARRANTY

Renegade MY 2022 motorhomes are covered by a 1-year unlimited miles limited warranty, plus a 3-year 36,000-mile limited structural warranty.

All Renegade motorhome chassis, engines and transmissions, and drivetrain warranties are provided and administered by their respective manufacturers.

For specific information about these warranties, ask your dealer or contact Renegade RV.



CELEBRATING 25 YEARS OF EXTREME LUXURY AND ADVENTURE



In celebration of 25 years, Renegade is offering a special 25th anniversary edition option of the Valencia.

Special Features Include:

- 25th Anniversary Paint Scheme with Special Edition Logo
- Limited Edition Unit # Badge
- Chrome Compartment Door Handles
- Custom 25th Anniversary Mudflap
- Custom 25th Wheel Hub Insert
- Embroidered Cab Seat Headrest
- 25th Anniversary Throw Pillows (2X)
- 25th Anniversary Slide Fascia Badging
- 25th Anniversary Multiplex Badging
- Pair of 25th "Proud Owner" Hats and Soft Shell Jackets

(Limited Availability)



Confidence to go anywhere

52216 SR 15 Bristol, IN 46507

888.522.1126 | RenegadeRV.com

Features and options may vary from descriptions without notice.