

CLASS-A

# ALLEGRO BUS



CLASS-A

# ALLEGRO BUS





45 OPP with G11 White Mahogany



45 OPP with G11 White Mahogany

2022 ALLEGRO BUS

## PERFECTLY PREPARED FOR TAKE-OFF.

Move ahead in more ways than one. In the new 2022 Allegro Bus. One of our most advanced coaches ever. Comfort and elegance blend seamlessly with breakthrough technology, taking all your travels to the next level. Its PowerGlide Chassis ensures a smooth ride, while the standard OnGuard ACTIVE package, with Advanced Emergency Braking System and Adaptive Cruise Control make every mile safer. Then, once you've arrived, it's time to enjoy the rich complement of upscale amenities. The new MY22 MIRA app puts control of most of your coach's systems in the palm of your hand, right on your smart phone. Abundant living space, four HDTVs— including one outside— with a sound bar in the living area and outside, an integrated Spyder Multiplex System, and handcrafted cabinetry are all standard. The kitchen, replete with high-end appliances, expansive counter and storage space makes meal prep easy. Outstanding towing capacity and generous cargo space for your gear round out this exceptionally capable and comfortable coach. The new 2022 Bus.

Top to bottom: Bathroom with Tri-view Vanity Mirror, Bedroom with Power Smart King Bed, Living Area. All interior shown are 45 FP with Shadow cabinets, Chanel II décor.



2022 ALLEGRO BUS

## PERFECTLY PREPARED FOR TAKE-OFF.

Move ahead in more ways than one. In the new 2022 Allegro Bus. One of our most advanced coaches ever. Comfort and elegance blend seamlessly with breakthrough technology, taking all your travels to the next level. Its PowerGlide Chassis ensures a smooth ride, while the standard OnGuard ACTIVE package, with Advanced Emergency Braking System and Adaptive Cruise Control make every mile safer. Then, once you've arrived, it's time to enjoy the rich complement of upscale amenities. The new MY22 MIRA app puts control of most of your coach's systems in the palm of your hand, right on your smart phone. Abundant living space, four HDTVs—including one outside—with a sound bar in the living area and outside, an integrated Spyder Multiplex System, and handcrafted cabinetry are all standard. The kitchen, replete with high-end appliances, expansive counter and storage space makes meal prep easy. Outstanding towing capacity and generous cargo space for your gear round out this exceptionally capable and comfortable coach. The new 2022 Bus.

Top to bottom: Bathroom with Tri-view Vanity Mirror; Bedroom with Power Smart King Bed; Living Area. All interior shown are 45 FP with Shadow cabinets, Chanel II décor.



## Premium Paint System

Our eight-step full-body paint system features premium grade paints sealed with four layers of superclear coat with ultraviolet protection. An additional layer of high-performance film protects the front of the coach and select areas.

## GENERATION 10



G10 CINDERWOOD



G10 SUNLIT SAND



G10 FIRE OPAL



G10 WATERFALL



G10 FROSTED GRANITE



G10 WHITE MAHOGANY

## Premium Paint System

Our eight-step full-body paint system features premium grade paints sealed with four layers of superclear coat with ultraviolet protection. An additional layer of high-performance film protects the front of the coach and select areas.

## GENERATION 10



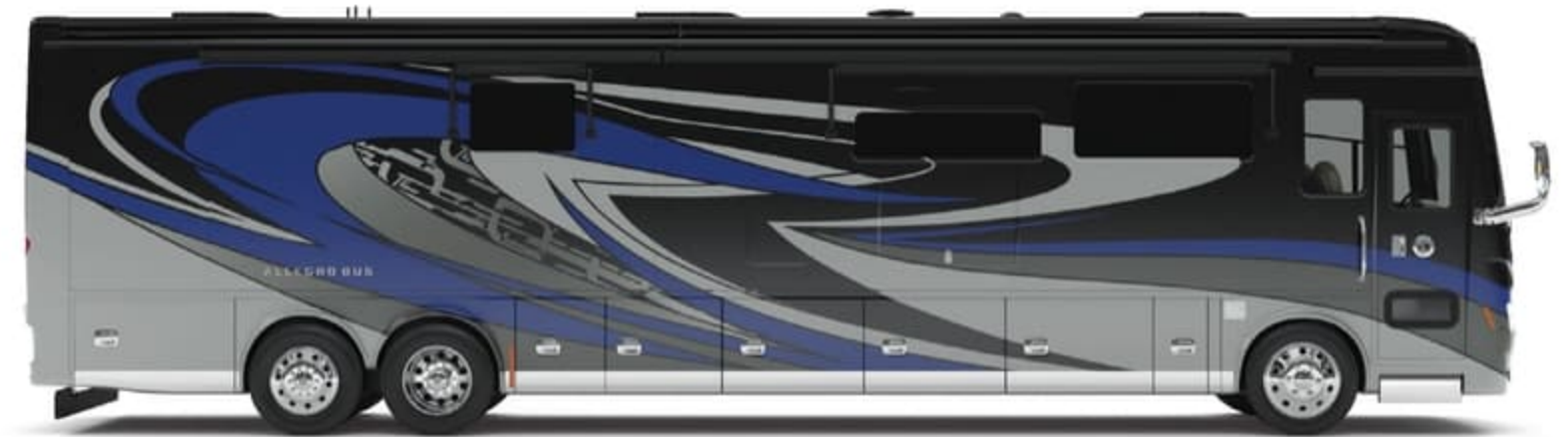
G10 CINDERWOOD



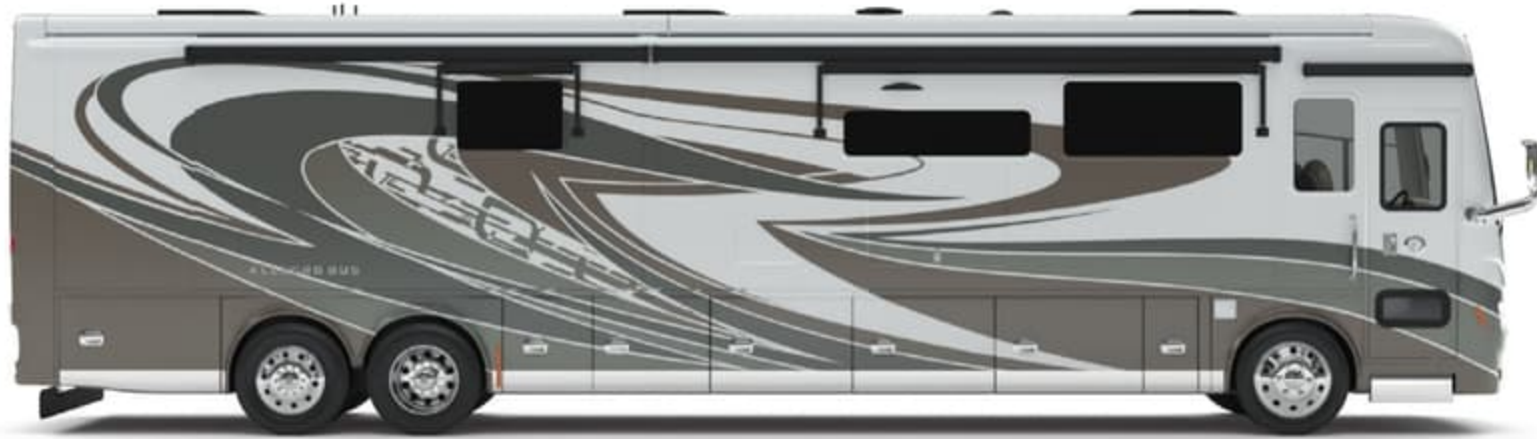
G10 SUNLIT SAND



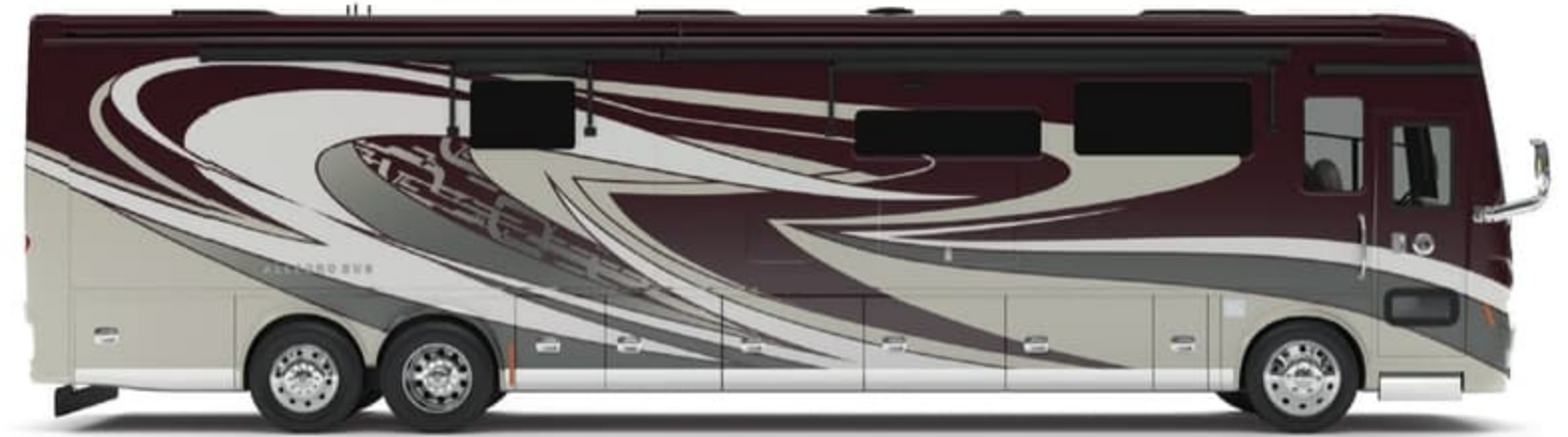
G10 FIRE OPAL



G10 WATERFALL



G10 FROSTED GRANITE



G10 WHITE MAHOGANY



Our Generation 10 and Generation 11 premium paint schemes now give you 12 different ways to make your 2022 Allegro Bus your very own. To learn more, visit [tiffinmotorhomes.com](http://tiffinmotorhomes.com).

### GENERATION 11



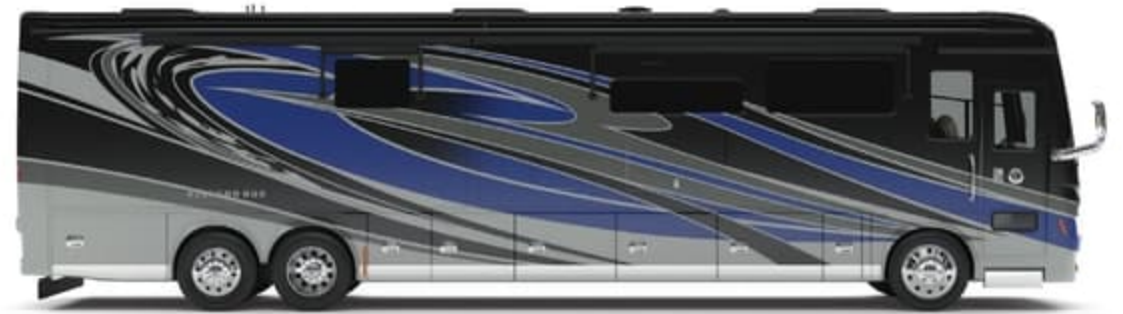
G11 CINDERWOOD



G11 SUNLIT SAND



G11 FIRE OPAL



G11 WATERFALL



G11 FROSTED GRANITE



G11 WHITE MAHOGANY

Our Generation 10 and Generation 11 premium paint schemes now give you 12 different ways to make your 2022 Allegro Bus your very own. To learn more, visit [tiffinmotorhomes.com](http://tiffinmotorhomes.com).

## GENERATION 11



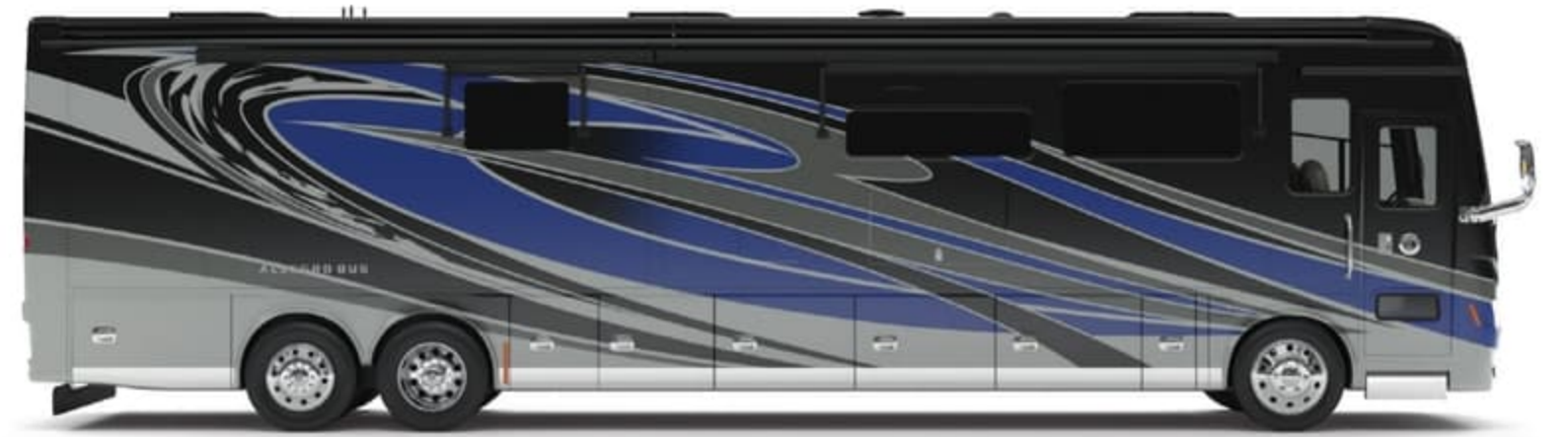
G11 CINDERWOOD



G11 SUNLIT SAND



G11 FIRE OPAL



G11 WATERFALL



G11 FROSTED GRANITE



G11 WHITE MAHOGANY

Interior Décor

Make your experience on the road all your own. Express yourself by choosing the interior appointments such as cabinet finishes, flooring, and décor ensembles for every part of your motorhome. In the 2022 Allegro Bus, you'll be able to travel in style no matter where you go.

ULTRALEATHER



SILKWORM



GREY OWL

CABINETS



GLAZED HONEY NATURAL CHERRY



SHADOW



GLAZED CHERRY WOOD



GLAZED CANYON CHERRY



PURE LINEN <sup>2</sup>

FLOORING



VICINITY WHITE (S)

MATTE FINISH TILE



TUSCANY SEA SALT (O) <sup>1</sup> GLOSSY FINISH TILE

LATTE III



WINDOW TREATMENT



BACKSPLASH



COUNTERTOP



LIVING ROOM



MASTER SUITE

Because of progressive improvements and specifications, standard and optional equipment are subject to change without notice or obligation. For a complete and up-to-date list of available options and specifications, visit [tiffinmotorhomes.com](http://tiffinmotorhomes.com).

<sup>1</sup> Tuscany Sea Salt Floor Tile comes Standard with Art Deco  
<sup>2</sup> Requires Luster Sheen

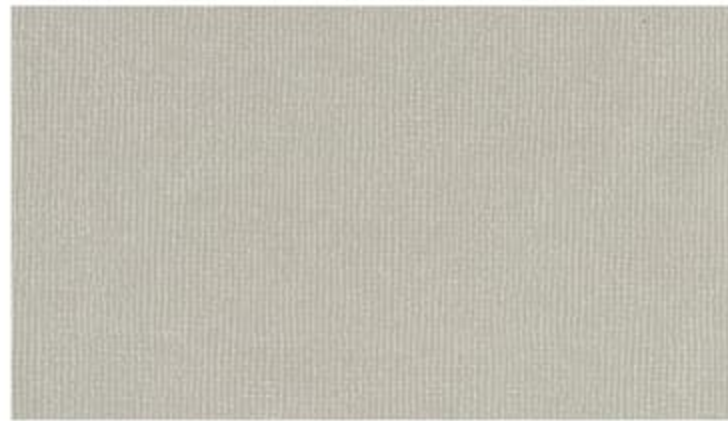
## Interior Décor

Make your experience on the road all your own. Express yourself by choosing the interior appointments such as cabinet finishes, flooring, and décor ensembles for every part of your motorhome. In the 2022 Allegro Bus, you'll be able to travel in style no matter where you go.

### ULTRALEATHER



SILKWORM



GREY OWL

### CABINETS



GLAZED HONEY NATURAL CHERRY



SHADOW



GLAZED CHERRY WOOD



GLAZED CANYON CHERRY



PURE LINEN <sup>2</sup>

### FLOORING



VICINITY WHITE (S)

MATTE FINISH TILE



TUSCANY SEA SALT (O) <sup>1</sup> GLOSSY FINISH TILE

### LATTE III



WINDOW TREATMENT



BACKSPLASH



COUNTERTOP



LIVING ROOM



MASTER SUITE

Because of progressive improvements and specifications, standard and optional equipment are subject to change without notice or obligation. For a complete and up-to-date list of available options and specifications, visit [tiffinmotorhomes.com](http://tiffinmotorhomes.com).

<sup>1</sup> Tuscany Sea Salt Floor Tile comes Standard with Art Deco

<sup>2</sup> Requires Luster Sheen

ART DECO II



WINDOW TREATMENT



BACKSPLASH



COUNTERTOP



LIVING ROOM



MASTER SUITE

CHANEL II



WINDOW TREATMENT



BACKSPLASH



COUNTERTOP



LIVING ROOM



MASTER SUITE

TEMPEST III



WINDOW TREATMENT



BACKSPLASH



COUNTERTOP



LIVING ROOM



MASTER SUITE

ART DECO II



WINDOW TREATMENT



BACKSPLASH



COUNTERTOP



LIVING ROOM



MASTER SUITE

CHANEL II



WINDOW TREATMENT



BACKSPLASH



COUNTERTOP



LIVING ROOM



MASTER SUITE

TEMPEST III



WINDOW TREATMENT



BACKSPLASH



COUNTERTOP



LIVING ROOM



MASTER SUITE

Floor Plans



The design of every Allegro Bus floor plan must meet four essential criteria: Maximum space, Optimal organization, Relaxation plus, and Elegant atmosphere. Tiffin's MORE Plans offer your family the most comfortable layout for life on the road.



If optional furniture combinations are selected, window locations may vary from diagram shown.

All options may not be available in every model. Because of progressive improvements and specifications, standard and optional equipment are subject to change without notice or obligation.

For a complete and up-to-date list of available options and specifications, visit [tiffinmotorhomes.com](http://tiffinmotorhomes.com).

Floor Plans



The design of every Allegro Bus floor plan must meet four essential criteria: Maximum space, Optimal organization, Relaxation plus, and Elegant atmosphere. Tiffin's MORE Plans offer your family the most comfortable layout for life on the road.



If optional furniture combinations are selected, window locations may vary from diagram shown.

All options may not be available in every model. Because of progressive improvements and specifications, standard and optional equipment are subject to change without notice or obligation.

For a complete and up-to-date list of available options and specifications, visit [tiffinmotorhomes.com](http://tiffinmotorhomes.com).



### 40 IP



### 45 OPP



### 45 FP



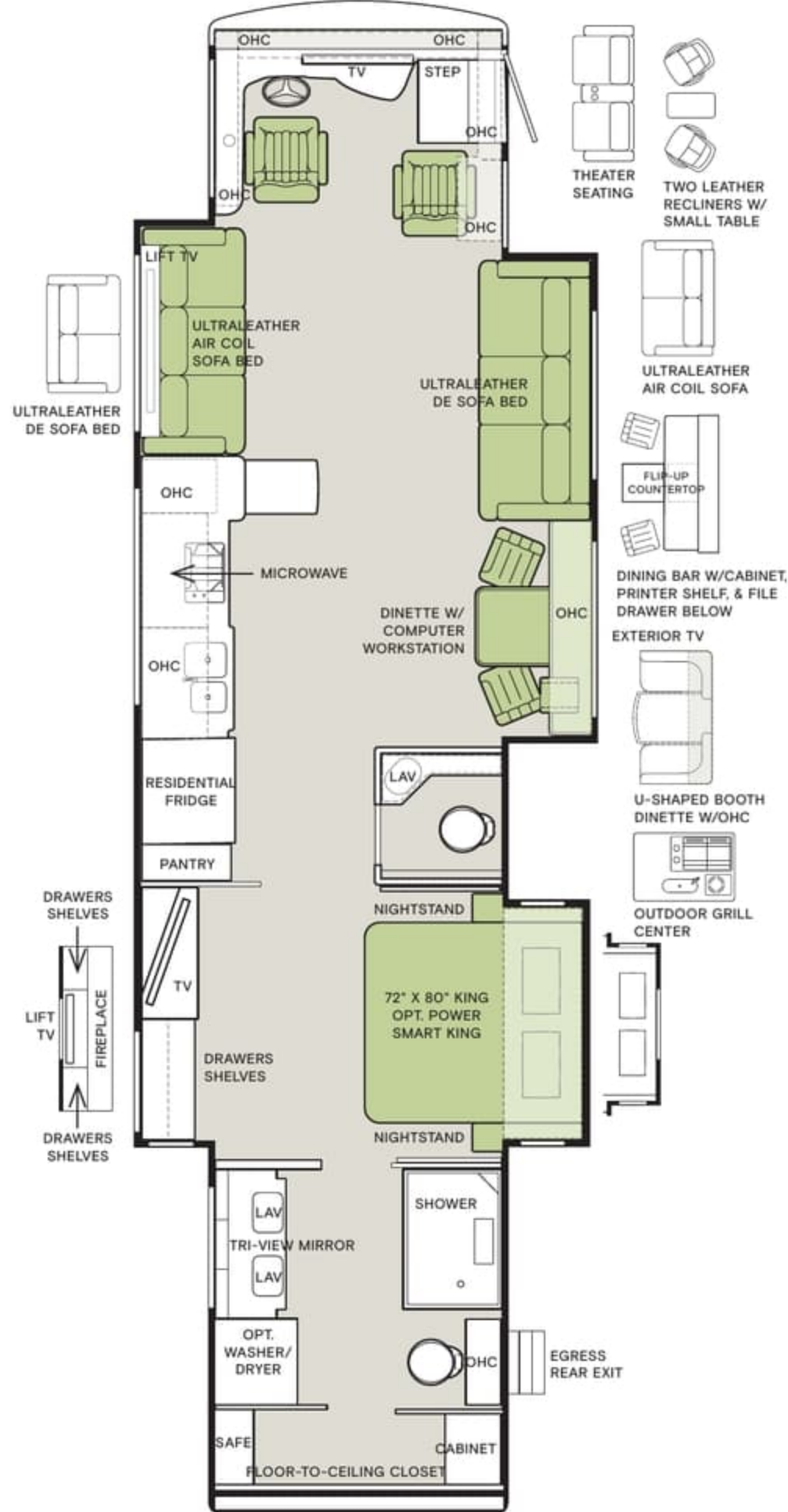
### 40 IP



### 45 OPP



### 45 FP



## Specifications

### CHASSIS

- Adaptive Cruise Control
- Collision Mitigation with Forward Warning and Active Braking
- Electronic Stability Control / Auto-traction Control
- Tire Pressure Monitoring
- Side-mounted Cooling Package
- ABS Brakes and Two-stage Compression Engine Brake
- Independent Front Suspension
- Four Aluminum Wheels (Six on Tag Axle Units)
- Four Air Bags (Six on Tag Axle Units)
- Combination Valid Air Leveling System with HWH Hydraulic Leveling Jacks

POWERGLIDE XSP® CHASSIS	35 CP	37 AP	40 AP	40 IP	45 OPP	45 FP	45 OPP	45 FP
Engine	Cummins L9						OPTION Cummins X15	
Horsepower	450 HP @ 2,100 RPM						605 HP @ 1,800 RPM	
Peak Torque	1,250 lb @ 1,400 RPM						1,950 lb @ 1,150 RPM	
Allison 3000 MH 6-speed Auto. Trans. with Lock-up (Torque Converter)	S	S	S	S	S	S	—	—
Allison 4000 MH 6-speed Auto. Trans. with Lock-up (Torque Converter)	—	—	—	—	—	—	S	S
GVWR (lb)	41,000	41,000	41,000	41,000	51,000	51,000	51,000	51,000
GAWR—Front (lb)	17,000	17,000	17,000	17,000	17,000	17,000	17,000	17,000
GAWR—Rear (lb)	24,000	24,000	24,000	24,000	23,000	23,000	23,000	23,000
GAWR Tag Axle (lb)	—	—	—	—	13,300	13,300	13,000	13,000
GCWR (lb)	51,000	51,000	51,000	51,000	66,000	66,000	71,000	71,000
Wheel Base	232"	250"	276"	276"	323"	323"	316"	316"
Tire Size	315/80 R 22.5	315/80 R 22.5	315/80 R 22.5	315/80 R 22.5	315/80 R 22.5	315/80 R 22.5	315/80 R 22.5	315/80 R 22.5
Fuel Tank (gal.) — Dual Fuel Fill	150	150	150	150	150	150	150	150
DEF Tank <sup>1</sup> (gal.)	10	10	10	10	10	10	15	15
Alternator Amps	210	210	210	210	210	210	280	280
Hitch Rating (lb) <sup>2</sup>	10,000	10,000	10,000	10,000	15,000	15,000	20,000	20,000

<sup>1</sup> Diesel Exhaust Fluid (DEF) is the active component used in Selective Catalytic Reduction (SCR) engines to reduce nitrogen oxide emissions by 90% to meet EPA standards.

<sup>2</sup> Maximum Trailer Weight is dependent on the loading and towing variables which include the GVWR, GAWR, and GCWR, as well as adequate trailer brakes.

WEIGHTS AND MEASURES	35 CP	37 AP	40 AP	40 IP	45 OPP	45 FP	45 OPP	45 FP
							X15 605 HP OPTION	
Overall Length (approximately) <sup>3</sup>	37' 5"	38' 11"	41'	41'	45'	45'	45'	45'
Overall Height (maximum)	13' 3"	13' 3"	13' 3"	13' 3"	13' 3"	13' 3"	13' 3"	13' 3"
Interior Height	83"	83"	83"	83"	83"	83"	83"	83"
Overall Width <sup>3</sup>	101"	101"	101"	101"	101"	101"	101"	101"
Interior Width	96"	96"	96"	96"	96"	96"	96"	96"
Fresh Water (gal.)	100	100	100	100	100	100	100	100
Black Water (gal.)	55	55	55	55	55	55	55	55
Grey Water (gal.)	100	100	100	100	100	100	100	100
Basement Storage (cubic ft — app.)	180	180	229	229	257	257	237	237
Minimum Garage Height	14'	14'	14'	14'	14'	14'	14'	14'

<sup>3</sup> The approximated coach width and length does not include side view mirrors.

### PLUMBING AND ELECTRICAL

- Spyder Control System with Energy Management and Auto-Generator Start
- Spyder Multiplex Lighting System
- Six 6V House Batteries on Slide-out Tray
- Onan® 10.0 kw Generator
- 2.8 K Watt Pure Sine Wave Inverter
- Hydronic Heating System
- Extraordinaire™ AC System with Three Roof ACs with Heat Pumps (15 K BTUs)
- SeeLevel Tank Monitor
- SeeLevel Monitor Pad Located at Dump Station
- Heated Water and Holding Tank Compartments
- 50 Amp Shore Power with Power Cord Reel
- 12 V Disconnect Switch
- Black Holding Tank Flush System
- 110 V Exterior Receptacle
- Water Filter
- Gravity Water Fill
- Exterior Rinse Hose with Soap Dispenser and Paper Towel Holder
- Prep for Winegard® TRAVLER Satellite
- Prep for Solar Panel
- Prep for Winegard Connect™
- In-motion Satellite Dish with DISH Network® Receiver <sup>4</sup>
- Digital TV Antenna
- TRC Hi/Lo Voltage Protection
- AquaView ShowerMiser

ELECTRICAL OPTIONS	35 CP	37 AP	40 AP	40 IP	45 OPP	45 FP
Wi-Fi Ranger (subscription required)	0	0	0	0	0	0
Three Solar Panels	0	0	0	0	0	0
Six Solar Panels	—	0	0	0	0	0
Extended Cycle Batteries <sup>5</sup>	0	0	0	0	0	0
Lithium Battery <sup>5</sup>	0	0	0	0	0	0

<sup>4</sup> High-definition programming is not available on a domed satellite antenna unless you subscribe to DISH Network®.

<sup>5</sup> Cannot pair Extended Cycle Batteries and Lithium Battery together.

### EXTERIOR

- Fiberglass Front and Rear Caps
- Full-body Paint with Protective Film on Front Cap and Select Areas
- Large Tinted One-piece Windshield
- Heated Chrome Power Mirrors with Remote Adjustments
- Outdoor Spyder® Control System Screen
- Single-motor Intermittent Wipers
- Undercoating
- Deadbolt Front Entrance Door
- Keyless Entry Door System and Keyless Component Door Locks
- Exterior Flat-panel TV
- Dual Pane Tinted Windows
- Girard Power Door and Patio Awnings
- Pass-through Basement Storage
- Concealed Air Horn
- Lockable Swing-out Exterior Storage Doors with Gas Shocks
- Custom Mud Flap
- Docking Lights
- Luggage Compartment Lights
- Exterior Ground Effects Lighting
- Charcoal Carpet Cargo Walls
- Sewer Hose Storage

EXTERIOR OPTIONS	35 CP	37 AP	40 AP	40 IP	45 OPP	45 FP
Second Girard Patio Awning	—	—	0	0	0	0
Basement Freezer/Refrigerator	0	0	0	0	0	0
Roof Ladder	0	0	0	0	0	0
Exterior Lighting Under Slide-out	0	0	0	0	0	0
Power Exterior TV Door	0	0	0	0	0	0
Power Window Awnings	0	0	0	0	0	0
Cargo Door Stainless Steel Rocker Trim	0	0	0	0	0	0
One Manual Storage Compartment Slide-out Tray	0	0	0	0	0	0
Two Manual Storage Compartment Slide-out Trays	—	—	0	0	0	0
Pull-out Outdoor Grill <sup>6</sup>	—	—	0	0	—	—
Outdoor Kitchen	—	—	—	—	0	0

<sup>6</sup> Requires one Slide-out Tray.

Because of progressive improvements and specifications, standard and optional equipment are subject to change without notice or obligation. For a complete and up-to-date list of available options and specifications, visit [tiffinmotorhomes.com](http://tiffinmotorhomes.com).

# Specifications

## CHASSIS

- Adaptive Cruise Control
- Collision Mitigation with Forward Warning and Active Braking
- Electronic Stability Control / Auto-traction Control
- Tire Pressure Monitoring
- Side-mounted Cooling Package
- ABS Brakes and Two-stage Compression Engine Brake
- Independent Front Suspension
- Four Aluminum Wheels (Six on Tag Axle Units)
- Four Air Bags (Six on Tag Axle Units)
- Combination Valid Air Leveling System with HWH Hydraulic Leveling Jacks

POWERGLIDE XSP® CHASSIS	35 CP	37 AP	40 AP	40 IP	45 OPP	45 FP	45 OPP	45 FP
Engine	Cummins L9						<b>OPTION</b> Cummins X15	
Horsepower	450 HP @ 2,100 RPM						605 HP @ 1,800 RPM	
Peak Torque	1,250 lb @ 1,400 RPM						1,950 lb @ 1,150 RPM	
Allison 3000 MH 6-speed Auto. Trans. with Lock-up (Torque Converter)	S	S	S	S	S	S	—	—
Allison 4000 MH 6-speed Auto. Trans. with Lock-up (Torque Converter)	—	—	—	—	—	—	S	S
GVWR (lb)	41,000	41,000	41,000	41,000	51,000	51,000	51,000	51,000
GAWR—Front (lb)	17,000	17,000	17,000	17,000	17,000	17,000	17,000	17,000
GAWR—Rear (lb)	24,000	24,000	24,000	24,000	23,000	23,000	23,000	23,000
GAWR Tag Axle (lb)	—	—	—	—	13,300	13,300	13,000	13,000
GCWR (lb)	51,000	51,000	51,000	51,000	66,000	66,000	71,000	71,000
Wheel Base	232"	250"	276"	276"	323"	323"	316"	316"
Tire Size	315/80 R 22.5	315/80 R 22.5	315/80 R 22.5	315/80 R 22.5	315/80 R 22.5	315/80 R 22.5	315/80 R 22.5	315/80 R 22.5
Fuel Tank (gal.) — Dual Fuel Fill	150	150	150	150	150	150	150	150
DEF Tank <sup>1</sup> (gal.)	10	10	10	10	10	10	15	15
Alternator Amps	210	210	210	210	210	210	280	280
Hitch Rating (lb) <sup>2</sup>	10,000	10,000	10,000	10,000	15,000	15,000	20,000	20,000

<sup>1</sup> Diesel Exhaust Fluid (DEF) is the active component used in Selective Catalytic Reduction (SCR) engines to reduce nitrogen oxide emissions by 90% to meet EPA standards.  
<sup>2</sup> Maximum Trailer Weight is dependent on the loading and towing variables which include the GVWR, GAWR, and GCWR, as well as adequate trailer brakes.

WEIGHTS AND MEASURES	35 CP	37 AP	40 AP	40 IP	45 OPP	45 FP	45 OPP	45 FP
	<b>X15 605 HP OPTION</b>							
Overall Length (approximately) <sup>3</sup>	37' 5"	38' 11"	41'	41'	45'	45'	45'	45'
Overall Height (maximum)	13' 3"	13' 3"	13' 3"	13' 3"	13' 3"	13' 3"	13' 3"	13' 3"
Interior Height	83"	83"	83"	83"	83"	83"	83"	83"
Overall Width <sup>3</sup>	101"	101"	101"	101"	101"	101"	101"	101"
Interior Width	96"	96"	96"	96"	96"	96"	96"	96"
Fresh Water (gal.)	100	100	100	100	100	100	100	100
Black Water (gal.)	55	55	55	55	55	55	55	55
Grey Water (gal.)	100	100	100	100	100	100	100	100
Basement Storage (cubic ft — app.)	180	180	229	229	257	257	237	237
Minimum Garage Height	14'	14'	14'	14'	14'	14'	14'	14'

<sup>3</sup> The approximated coach width and length does not include side view mirrors.

## PLUMBING AND ELECTRICAL

- Spyder Control System with Energy Mangement and Auto-Generator Start
- Spyder Multiplex Lighting System
- Six 6V House Batteries on Slide-out Tray
- Onan® 10.0 kw Generator
- 2.8 K Watt Pure Sine Wave Inverter
- Hydronic Heating System
- Extraordinaire™ AC System with Three Roof ACs with Heat Pumps (15 K BTUs)
- SeeLevel Tank Monitor
- SeeLevel Monitor Pad Located at Dump Station
- Heated Water and Holding Tank Compartments
- 50 Amp Shore Power with Power Cord Reel
- 12 V Disconnect Switch
- Black Holding Tank Flush System
- 110 V Exterior Receptacle
- Water Filter
- Gravity Water Fill
- Exterior Rinse Hose with Soap Dispenser and Paper Towel Holder
- Prep for Winegard® TRAV'LER Satellite
- Prep for Solar Panel
- Prep for Winegard Connect™
- In-motion Satellite Dish with DISH Network® Receiver <sup>4</sup>
- Digital TV Antenna
- TRC Hi/Lo Voltage Protection
- AquaView ShowerMiser

ELECTRICAL OPTIONS	35 CP	37 AP	40 AP	40 IP	45 OPP	45 FP
Wi-Fi Ranger (subscription required)	O	O	O	O	O	O
Three Solar Panels	O	O	O	O	O	O
Six Solar Panels	—	O	O	O	O	O
Extended Cycle Batteries <sup>5</sup>	O	O	O	O	O	O
Lithium Battery <sup>5</sup>	O	O	O	O	O	O

<sup>4</sup> High-definition programming is not available on a domed satellite antenna unless you subscribe to DISH Network®.  
<sup>5</sup> Cannot pair Extended Cycle Batteries and Lithium Battery together.

## EXTERIOR

- Fiberglass Front and Rear Caps
- Full-body Paint with Protective Film on Front Cap and Select Areas
- Large Tinted One-piece Windshield
- Heated Chrome Power Mirrors with Remote Adjustments
- Outdoor Spyder® Control System Screen
- Single-motor Intermittent Wipers
- Undercoating
- Deadbolt Front Entrance Door
- Keyless Entry Door System and Keyless Component Door Locks
- Exterior Flat-panel TV
- Dual Pane Tinted Windows
- Girard Power Door and Patio Awnings
- Pass-through Basement Storage
- Concealed Air Horn
- Lockable Swing-out Exterior Storage Doors with Gas Shocks
- Custom Mud Flap
- Docking Lights
- Luggage Compartment Lights
- Exterior Ground Effects Lighting
- Charcoal Carpet Cargo Walls
- Sewer Hose Storage

EXTERIOR OPTIONS	35 CP	37 AP	40 AP	40 IP	45 OPP	45 FP
Second Girard Patio Awning	—	—	O	O	O	O
Basement Freezer/Refrigerator	O	O	O	O	O	O
Roof Ladder	O	O	O	O	O	O
Exterior Lighting Under Slide-out	O	O	O	O	O	O
Power Exterior TV Door	O	O	O	O	O	O
Power Window Awnings	O	O	O	O	O	O
Cargo Door Stainless Steel Rocker Trim	O	O	O	O	O	O
One Manual Storage Compartment Slide-out Tray	O	O	O	O	O	O
Two Manual Storage Compartment Slide-out Trays	—	—	O	O	O	O
Pull-out Outdoor Grill <sup>6</sup>	—	—	O	O	—	—
Outdoor Kitchen	—	—	—	—	O	O

<sup>6</sup> Requires one Slide-out Tray.

Because of progressive improvements and specifications, standard and optional equipment are subject to change without notice or obligation. For a complete and up-to-date list of available options and specifications, visit [tiffinmotorhomes.com](http://tiffinmotorhomes.com).

## INTERIOR

<ul style="list-style-type: none"> <li>• Spyder Multiplex Controls</li> <li>• LED Lighting</li> <li>• Soft Touch Vinyl Ceiling</li> </ul>		<ul style="list-style-type: none"> <li>• Washer/Dryer Ready</li> <li>• Carbon Monoxide and Smoke Detectors</li> <li>• Central Vacuum Cleaner with VacPan</li> </ul>		<ul style="list-style-type: none"> <li>• Sound Bar with Subwoofer</li> <li>• Power Solar and Privacy Shades in Living Room</li> </ul>			
INTERIOR OPTIONS		35 CP	37 AP	40 AP	40 IP	45 OPP	45 FP
Handcrafted Cabinetry	Glazed Canyon Cherry	O	O	O	O	O	O
	Glazed Cherry	O	O	O	O	O	O
	Glazed Honey Natural Cherry	O	O	O	O	O	O
	Shadow	O	O	O	O	O	O
	Pure Linen	O	O	O	O	O	O
	Pure Linen in Master Bath	O	O	O	O	O	O
Luster Sheen Cabinet Finish		O	O	O	O	O	O
Fabric Suites	Art Deco II	O	O	O	O	O	O
	Chanel II	O	O	O	O	O	O
	Latte III	O	O	O	O	O	O
	Tempest III	O	O	O	O	O	O
Ultraleathers	Grey Owl	O	O	O	O	O	O
	Silkworm	O	O	O	O	O	O
Floor Tiles	Vicinity White (Matte Finish)	S	S	S	S	S	S
	Tuscany Sea Salt (Glossy Finish)	O	O	O	O	O	O
	Gold Heat® Dual Zone Heated Tile Floor	O	O	O	O	O	O
	Tile Floor in Slide-Outs	—	—	—	—	—	S
Ceiling Treatment	Contemporary Ceiling	S	S	S	S	S	S
	Traditional Ceiling	O	O	O	O	O	O
Fascia Treatment	Contemporary Fascia	S	S	S	S	S	S
	Traditional Fascia	O	O	O	O	O	O
Laundry Room	Stacked Washer/Dryer	O	O	O	O	O	O

## DRIVER'S COMPARTMENT

<ul style="list-style-type: none"> <li>• VIP Smart Wheel with Integrated Controls</li> <li>• Valid LCD Instrument Cluster Display with Integrated Leveling Controls</li> <li>• CD Player and AM/FM Stereo with Satellite Radio (subscription required) and Navigation System<sup>7</sup></li> <li>• Color Rear-view Monitor System with Side-view Cameras Activated by Turn Signals</li> <li>• Blind Spot Monitoring</li> <li>• Adjustable Fuel and Brake Pedals</li> </ul>		<ul style="list-style-type: none"> <li>• Automatic Headlights</li> <li>• Fog Lights</li> <li>• Ultraleather Power Driver and Passenger Seats with Lumbar Support and Integrated Seatbelts</li> <li>• Ultraleather Power Passenger Seat with Footrest</li> <li>• Power Solar and Privacy Windshield and Cockpit Shades</li> <li>• Driver Side Power Window</li> <li>• Solid Non-opening Window on Passenger Side</li> </ul>		<ul style="list-style-type: none"> <li>• Front Overhead Flat-panel TV</li> <li>• Cupholders on Driver and Passenger Side</li> <li>• Backlit Switches</li> <li>• Emergency Start Switch</li> <li>• Dual Dash Fans</li> <li>• Fire Extinguisher</li> <li>• USB Dash Receptacles</li> <li>• USB Passenger Side Receptacles</li> <li>• Power Step Well Cover</li> <li>• Phone Charging Station on Passenger Side</li> </ul>		
---	--	--	--	---	--	--

DRIVER'S COMPARTMENT OPTIONS	35 CP	37 AP	40 AP	40 IP	45 OPP	45 FP
Mobility <sup>8</sup>	O	O	O	O	O	O
JBL Sound System	O	O	O	O	O	O
Advanced Monitor System- (2) 10" Monitors, (1) 7" Passenger Monitor, Media Center, & RV GPS <sup>9</sup>	O	O	O	O	O	O
360 View Camera <sup>8</sup>	O	O	O	O	O	O

<sup>7</sup> Navigation System comes with free map updates, traffic, and weather subscription for first 3 years.

<sup>8</sup> Requires JBL Sound System Option.

<sup>9</sup> Requires Advanced Monitor System Option.

## KITCHEN

<ul style="list-style-type: none"> <li>• Polished Solid Surface Countertops with Sink Covers</li> <li>• Stainless Steel Double Bowl Sink</li> <li>• 2 1/2" Deep Lighted Toe Kick</li> <li>• LED Lighting Above Countertop</li> </ul>		<ul style="list-style-type: none"> <li>• Single Lever Sink Faucet with Built-in Sprayer</li> <li>• Stainless Steel Residential Refrigerator</li> <li>• Galley Soap Dispenser</li> <li>• 2-burner Induction Cooktop</li> </ul>		<ul style="list-style-type: none"> <li>• Stainless Steel Convection Microwave with Exterior Venting</li> <li>• Solid Surface Cooktop Cover</li> <li>• Galley Window</li> </ul>		
KITCHEN OPTIONS	35 CP	37 AP	40 AP	40 IP	45 OPP	45 FP
Drawer-type Dishwasher	O	O	O	O	O	O
Instant Hot Water Faucet	O	O	O	O	O	O
Wolf Cooktop Upgrade	O	O	O	O	O	O
Wood Refrigerator Panel	O	O	O	O	O	O
Expand-an-island	—	S	S	S	S	S

LIVING AREA/DINETTE	35 CP	37 AP	40 AP	40 IP	45 OPP	45 FP
Dinette with Computer Workstation on Passenger Side	—	S	S	S	S	S
Dinette with Computer Workstation on Passenger Side with Lift TV	S	—	—	—	—	—
Ultraleather U-shaped Dinette on Passenger Side	—	O	O	O	O	O
Dining Bar with Lift TV on Passenger Side	O	—	—	—	—	—
Dining Bar on Passenger Side	—	—	—	—	—	O
One Ultraleather Recliner and Lift TV on Passenger Side and Fireplace	—	—	—	O	O	—
Ultraleather DE Sofa with Lift TV on Passenger Side	—	—	—	S	S	—
Ultraleather Air Coil Sofa with Lift TV on Passenger Side	—	—	—	O	O	—
Ultraleather DE Sofa with Lift TV on Driver Side	—	—	—	—	—	O
Ultraleather Air Coil Sofa with Lift TV on Driver Side	—	—	—	—	—	S
Ultraleather Recliner and Hide-a-bed Sofa on Driver Side	—	S	S	—	—	—
Ultraleather Recliner and Theater Seating on Driver Side	—	O	O	—	—	—
Ultraleather Air Coil Sofa on Driver Side <sup>10</sup>	S	—	—	S	S	—
Ultraleather Air Coil Sofa on Passenger Side <sup>10</sup>	—	—	—	—	—	O
Ultraleather DE Sofa on Passenger Side <sup>10</sup>	—	—	—	—	—	S
Ultraleather Super Sofa on Driver Side	—	O	O	—	—	—
Theater Seating on Driver Side	O	—	—	O	O	—
Theater Seating on Passenger Side	—	—	—	—	—	O
Two Ultraleather Recliners on Driver Side	—	—	—	O	O	—
Two Ultraleather Recliners on Passenger Side	—	—	—	—	—	O
Fireplace <sup>11</sup>	S	S	S	—	—	—
No Dinette Overhead Cabinets	S	—	—	—	—	—
Dinette Overhead Cabinets	—	S	S	S	S	S

<sup>10</sup> Cannot option Air Coil Sofa on Driver Side and Passenger Side.

<sup>11</sup> Cannot option Fireplace on Driver Side and Passenger Side.

Note: Certain variations of furniture combinations will affect sleeping capacity. Certain variations will restrict walkway space.

## BEDROOM

<ul style="list-style-type: none"> <li>• Bed Comforter with Throw Pillows</li> <li>• Ceiling Fan</li> <li>• BluRay® System and Satellite Receiver</li> <li>• Solid Surface Nightstand Tops</li> </ul>		<ul style="list-style-type: none"> <li>• Solar and Privacy Shades</li> <li>• Laundry Hamper</li> <li>• Wall Safe</li> <li>• USB Receptacles</li> </ul>		<ul style="list-style-type: none"> <li>• Bedroom Overhead Cabinet without Window</li> <li>• Bedroom TV (No Lift TV and No Fireplace)</li> </ul>		
BEDROOM OPTIONS	35 CP	37 AP	40 AP	40 IP	45 OPP	45 FP
Memory Foam King Mattress (72" x 80")	—	S	S	S	S	S
Power Smart King Bed	S	O	O	O	O	O
No Bedroom Overhead Cabinet with Window	O	O	O	O	O	O
Bedroom Lift TV with Fireplace	—	O	O	O	O	O
Egress Rear Exit (Requires Bedroom Overhead Cabinet)	O	O	O	O	O	—

## BATHROOM

<ul style="list-style-type: none"> <li>• Solid Surface Shower with Glass Door</li> <li>• Medicine Cabinet with Vanity Lights</li> <li>• Skylight and LED Light in Shower</li> </ul>		<ul style="list-style-type: none"> <li>• Roof Vent Fan</li> <li>• Electric Flush Toilet</li> <li>• Adjustable Shelves in Vanities</li> </ul>		<ul style="list-style-type: none"> <li>• Solid Surface Vanity Top</li> <li>• Solid Surface Sink Bowls</li> </ul>		
BATHROOM OPTION	35 CP	37 AP	40 AP	40 IP	45 OPP	45 FP
Bathroom Egress Door	—	—	—	—	—	S

## INTERIOR

INTERIOR OPTIONS		35 CP	37 AP	40 AP	40 IP	45 OPP	45 FP
Handcrafted Cabinetry	Glazed Canyon Cherry	O	O	O	O	O	O
	Glazed Cherry	O	O	O	O	O	O
	Glazed Honey Natural Cherry	O	O	O	O	O	O
	Shadow	O	O	O	O	O	O
	Pure Linen	O	O	O	O	O	O
	Pure Linen in Master Bath	O	O	O	O	O	O
	Luster Sheen Cabinet Finish	O	O	O	O	O	O
Fabric Suites	Art Deco II	O	O	O	O	O	O
	Chanel II	O	O	O	O	O	O
	Latte III	O	O	O	O	O	O
	Tempest III	O	O	O	O	O	O
Ultraleathers	Grey Owl	O	O	O	O	O	O
	Silkworm	O	O	O	O	O	O
Floor Tiles	Vicinity White (Matte Finish)	S	S	S	S	S	S
	Tuscany Sea Salt (Glossy Finish)	O	O	O	O	O	O
	Gold Heat® Dual Zone Heated Tile Floor	O	O	O	O	O	O
	Tile Floor in Slide-Outs	—	—	—	—	—	S
Ceiling Treatment	Contemporary Ceiling	S	S	S	S	S	S
	Traditional Ceiling	O	O	O	O	O	O
Fascia Treatment	Contemporary Fascia	S	S	S	S	S	S
	Traditional Fascia	O	O	O	O	O	O
Laundry Room	Stacked Washer/Dryer	O	O	O	O	O	O

## DRIVER'S COMPARTMENT

DRIVER'S COMPARTMENT OPTIONS		35 CP	37 AP	40 AP	40 IP	45 OPP	45 FP
Mobilitye®		O	O	O	O	O	O
JBL Sound System		O	O	O	O	O	O
Advanced Monitor System- (2) 10" Monitors, (1) 7" Passenger Monitor, Media Center, & RV GPS®		O	O	O	O	O	O
360 View Camera®		O	O	O	O	O	O

DRIVER'S COMPARTMENT OPTIONS		35 CP	37 AP	40 AP	40 IP	45 OPP	45 FP
Mobilitye®		O	O	O	O	O	O
JBL Sound System		O	O	O	O	O	O
Advanced Monitor System- (2) 10" Monitors, (1) 7" Passenger Monitor, Media Center, & RV GPS®		O	O	O	O	O	O
360 View Camera®		O	O	O	O	O	O

<sup>7</sup> Navigation System comes with free map updates, traffic, and weather subscription for first 3 years.

<sup>8</sup> Requires JBL Sound System Option.

<sup>9</sup> Requires Advanced Monitor System Option.

## KITCHEN

KITCHEN OPTIONS		35 CP	37 AP	40 AP	40 IP	45 OPP	45 FP
Drawer-type Dishwasher		O	O	O	O	O	O
Instant Hot Water Faucet		O	O	O	O	O	O
Wolf Cooktop Upgrade		O	O	O	O	O	O
Wood Refrigerator Panel		O	O	O	O	O	O
Expand-an-island		—	S	S	S	S	S

LIVING AREA/DINETTE	35 CP	37 AP	40 AP	40 IP	45 OPP	45 FP
Dinette with Computer Workstation on Passenger Side	—	S	S	S	S	S
Dinette with Computer Workstation on Passenger Side with Lift TV	S	—	—	—	—	—
Ultraleather U-shaped Dinette on Passenger Side	—	O	O	O	O	O
Dining Bar with Lift TV on Passenger Side	O	—	—	—	—	—
Dining Bar on Passenger Side	—	—	—	—	—	O
One Ultraleather Recliner and Lift TV on Passenger Side and Fireplace	—	—	—	O	O	—
Ultraleather DE Sofa with Lift TV on Passenger Side	—	—	—	S	S	—
Ultraleather Air Coil Sofa with Lift TV on Passenger Side	—	—	—	O	O	—
Ultraleather DE Sofa with Lift TV on Driver Side	—	—	—	—	—	O
Ultraleather Air Coil Sofa with Lift TV on Driver Side	—	—	—	—	—	S
Ultraleather Recliner and Hide-a-bed Sofa on Driver Side	—	S	S	—	—	—
Ultraleather Recliner and Theater Seating on Driver Side	—	O	O	—	—	—
Ultraleather Air Coil Sofa on Driver Side <sup>10</sup>	S	—	—	S	S	—
Ultraleather Air Coil Sofa on Passenger Side <sup>10</sup>	—	—	—	—	—	O
Ultraleather DE Sofa on Passenger Side <sup>10</sup>	—	—	—	—	—	S
Ultraleather Super Sofa on Driver Side	—	O	O	—	—	—
Theater Seating on Driver Side	O	—	—	O	O	—
Theater Seating on Passenger Side	—	—	—	—	—	O
Two Ultraleather Recliners on Driver Side	—	—	—	O	O	—
Two Ultraleather Recliners on Passenger Side	—	—	—	—	—	O
Fireplace <sup>11</sup>	S	S	S	—	—	—
No Dinette Overhead Cabinets	S	—	—	—	—	—
Dinette Overhead Cabinets	—	S	S	S	S	S

<sup>10</sup> Cannot option Air Coil Sofa on Driver Side and Passenger Side.

<sup>11</sup> Cannot option Fireplace on Driver Side and Passenger Side.

Note: Certain variations of furniture combinations will affect sleeping capacity. Certain variations will restrict walkway space.

## BEDROOM

BEDROOM OPTIONS		35 CP	37 AP	40 AP	40 IP	45 OPP	45 FP
Memory Foam King Mattress (72" x 80")		—	S	S	S	S	S
Power Smart King Bed		S	O	O	O	O	O
No Bedroom Overhead Cabinet with Window		O	O	O	O	O	O
Bedroom Lift TV with Fireplace		—	O	O	O	O	O
Egress Rear Exit (Requires Bedroom Overhead Cabinet)		O	O	O	O	O	—

## BATHROOM

BATHROOM OPTION		35 CP	37 AP	40 AP	40 IP	45 OPP	45 FP
Bathroom Egress Door		—	—	—	—	—	S



Reflecting over four decades of innovation, Tiffin's proprietary PowerGlide Chassis demonstrates our ongoing commitment to delivering a motorhome experience that's precisely engineered for durability, reliability, performance, and control wherever your journey takes you.

#### MULTIPLEX WIRING WITH DIAGNOSTICS

The PowerGlide's multiplexed electrical system, with auto-reset fuses and relays, uses less wiring and increases reliability, efficiency, and flexibility.

#### DYNAMOMETER TESTING

The PowerGlide's dynamometer testing simulates full power road testing, enabling us to better assess engine performance, cooling system function, and instrumentation.

#### POWERGLIDE CHASSIS WARRANTY

The PowerGlide carries a Tiffin-backed limited warranty for three years or 50,000 miles against defects in materials and workmanship.

#### HUCK-BOLTED CONSTRUCTION

The PowerGlide's Huck Bolts are precision engineered two-piece fasteners. Huck Bolts are vibration resistant and provide direct metal to metal contact when installed.

For all information concerning the PowerGlide limited warranty provided by Tiffin, please refer to the full, written limited warranty set forth on the Tiffin website or held by our authorized dealerships. For a complete and up-to-date list of available options and specifications, visit [tiffinmotorhomes.com](http://tiffinmotorhomes.com).



Reflecting over four decades of innovation, Tiffin's proprietary PowerGlide Chassis demonstrates our ongoing commitment to delivering a motorhome experience that's precisely engineered for durability, reliability, performance, and control wherever your journey takes you.

#### MULTIPLEX WIRING WITH DIAGNOSTICS

The PowerGlide's multiplexed electrical system, with auto-reset fuses and relays, uses less wiring and increases reliability, efficiency, and flexibility.

#### DYNAMOMETER TESTING

The PowerGlide's dynamometer testing simulates full power road testing, enabling us to better assess engine performance, cooling system function, and instrumentation.

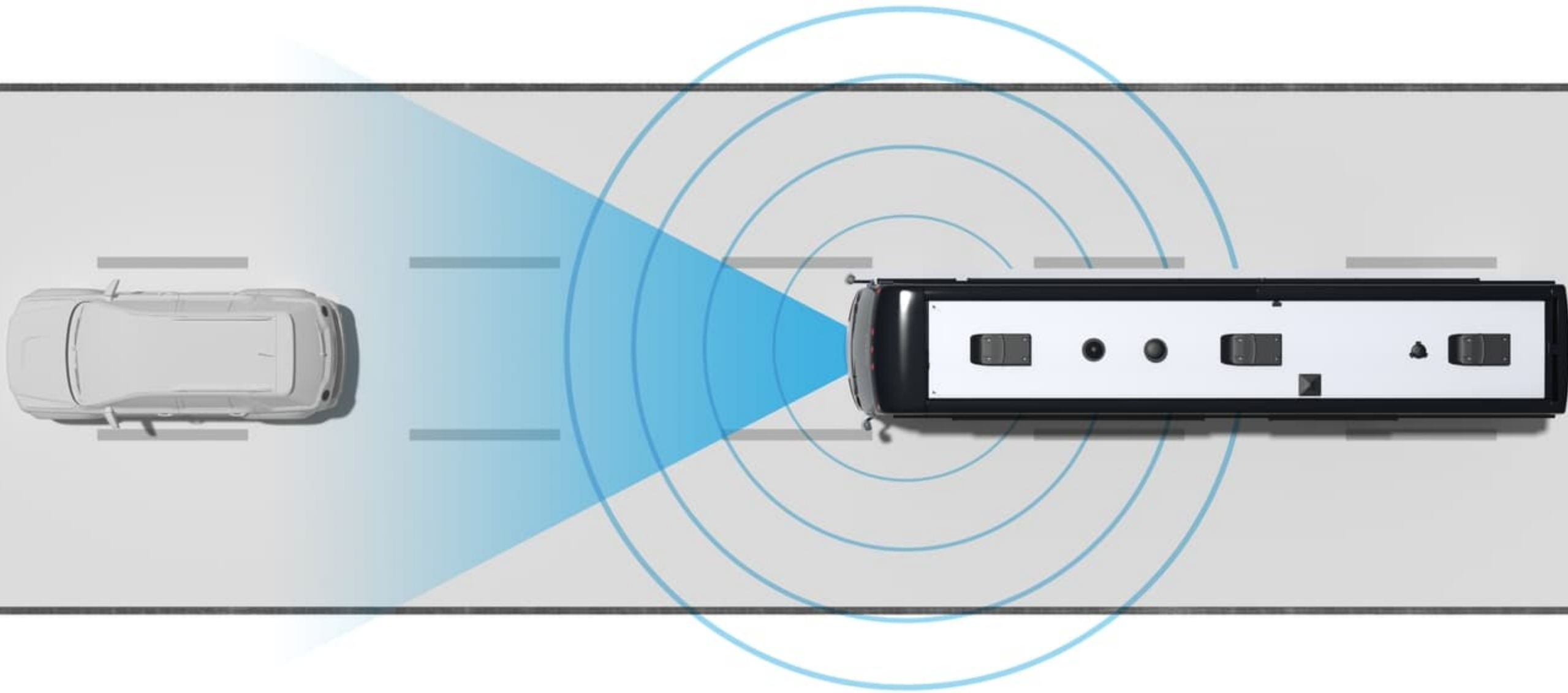
#### POWERGLIDE CHASSIS WARRANTY

The PowerGlide carries a Tiffin-backed limited warranty for three years or 50,000 miles against defects in materials and workmanship.

#### HUCK-BOLTED CONSTRUCTION

The PowerGlide's Huck Bolts are precision engineered two-piece fasteners. Huck Bolts are vibration resistant and provide direct metal to metal contact when installed.





No matter where life moves you, our foremost goal is getting you there and back again safely. That's why our Safety Suite now comes standard on all Class A diesel motorhomes, equipping you with the latest in proven safety technology to help keep you protected on the road ahead. Because safety is not an option. It's a standard.

#### ADVANCED EMERGENCY BRAKING SYSTEM

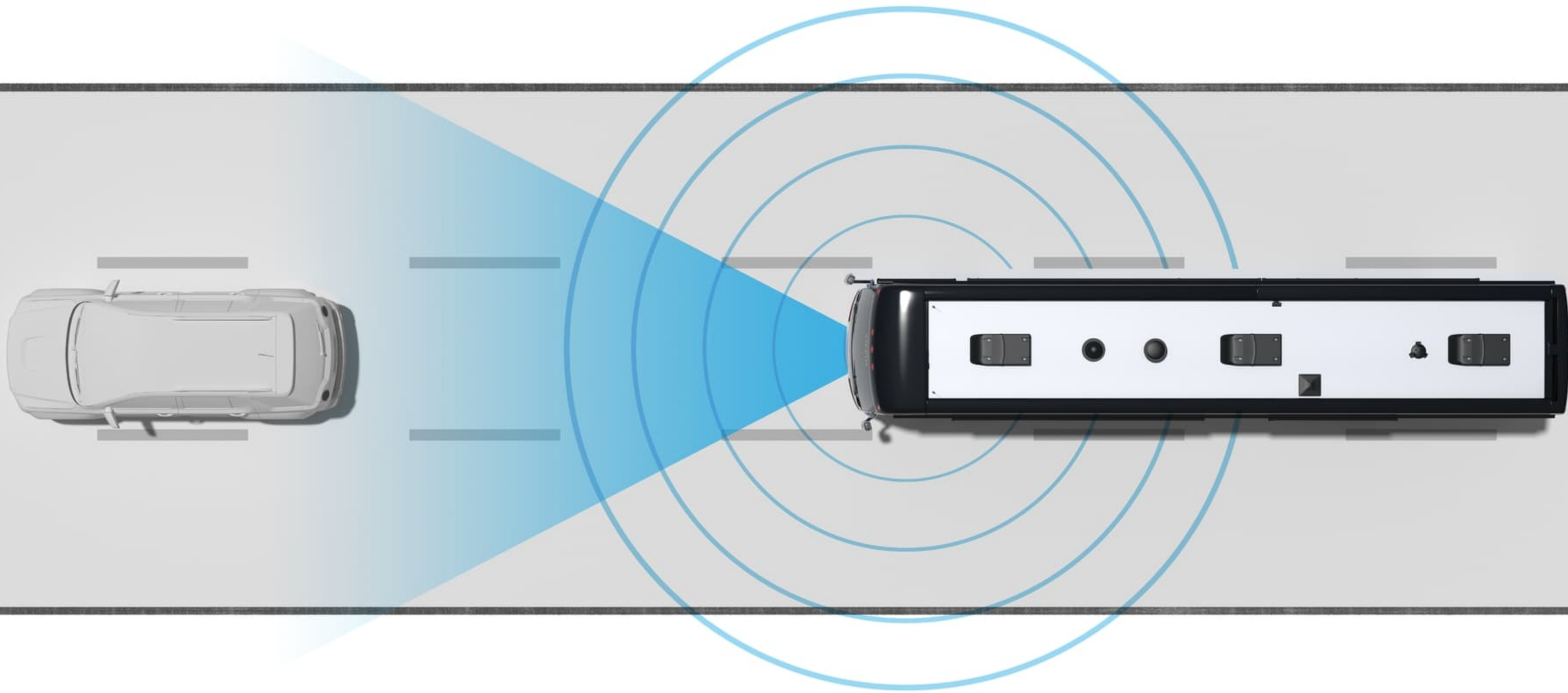
OnGuardACTIVE is an advanced driver assistance system that helps drivers mitigate or avoid rear end collisions. The system detects moving, stopped, and stationary objects and provides visual, audible, and haptic warnings. If necessary OnGuardACTIVE will apply the brakes to avoid or mitigate a forward collision.

#### ADAPTIVE CRUISE CONTROL

OnGuardACTIVE also has adaptive cruise control. While in cruise, the system detects time-to-collision of the moving vehicle in front. The system then automatically adjusts speed to help maintain a safe distance.

#### ELECTRONIC STABILITY CONTROL (ESC)

Active vehicle safety system that automatically intervenes when there is a high risk of directional instability that could lead to loss of vehicle control or rollover. Supports the driver in maintaining directional control of the vehicle when encountering slippery road conditions or taking an evasive action. Assists the driver in reducing the risk of rollover while in a curve or taking evasive action.



No matter where life moves you, our foremost goal is getting you there and back again safely. That's why our Safety Suite now comes standard on all Class A diesel motorhomes, equipping you with the latest in proven safety technology to help keep you protected on the road ahead. Because safety is not an option. It's a standard.

#### ADVANCED EMERGENCY BRAKING SYSTEM

OnGuardACTIVE is an advanced driver assistance system that helps drivers mitigate or avoid rear end collisions. The system detects moving, stopped, and stationary objects and provides visual, audible, and haptic warnings. If necessary OnGuardACTIVE will apply the brakes to avoid or mitigate a forward collision.

#### ADAPTIVE CRUISE CONTROL

OnGuardACTIVE also has adaptive cruise control. While in cruise, the system detects time-to-collision of the moving vehicle in front. The system then automatically adjusts speed to help maintain a safe distance.

#### ELECTRONIC STABILITY CONTROL (ESC)

Active vehicle safety system that automatically intervenes when there is a high risk of directional instability that could lead to loss of vehicle control or rollover. Supports the driver in maintaining directional control of the vehicle when encountering slippery road conditions or taking an evasive action. Assists the driver in reducing the risk of rollover while in a curve or taking evasive action.

1

YEAR OR 12,000 MILES  
LIMITED WARRANTY

5

YEARS OR 50,000 MILES  
DELAMINATION  
LIMITED WARRANTY

10

YEARS OR 50,000 MILES  
CONSTRUCTION  
LIMITED WARRANTY

1

YEAR COACH  
ROADSIDE SERVICE

∞

ONGOING  
CUSTOMER SUPPORT

FOR PARTS & SERVICE CALL 256.356.0261 OR VISIT [TIFFINMOTORHOMES.COM](http://TIFFINMOTORHOMES.COM)

105 2ND ST NW RED BAY, AL 35582  



**TIFFIN**

MOTORHOMES

1

YEAR OR 12,000 MILES  
LIMITED WARRANTY

5

YEARS OR 50,000 MILES  
DELAMINATION  
LIMITED WARRANTY

10

YEARS OR 50,000 MILES  
CONSTRUCTION  
LIMITED WARRANTY

1

YEAR COACH  
ROADSIDE SERVICE

∞

ONGOING  
CUSTOMER SUPPORT

FOR PARTS & SERVICE CALL 256.356.0261 OR VISIT [TIFFINMOTORHOMES.COM](http://TIFFINMOTORHOMES.COM)  
105 2ND ST NW RED BAY, AL 35582  



**TIFFIN**  
MOTORHOMES