

CLASS-A

# PHAETON





CLASS-A

# PHAETON







40 IP with G10 Frosted Granite





40 IP with G10 Frosted Granite



2022 PHAETON

## MILES AHEAD IN EVERY WAY.

Introducing the new 2022 Tiffin Phaeton. Incredibly luxurious and equipped with an abundance of upscale amenities as standard features, the Phaeton continues to remain a customer favorite. And no wonder. Behind the wheel, both the PowerGlide® Chassis\* and the Freightliner® Chassis will help ensure every mile is smooth. Then, whether you're relaxing, cooking, or sleeping, you'll discover smartly engineered touches that make every trip an adventure in style. Available in a multitude of floor plans, finishes, and décors, the Phaeton offers a stunning degree of high-end elegance and comfort, yet remains well within reach. Let every journey be an unforgettable one. In your new 2022 Phaeton.

\*Only Available on the 40 IH and 44 OH

Top to bottom: Driver Side Booth Dinette and Theatre Seats; Bedroom with Memory Foam King Mattress; Passenger Side Air Coil Sofa. All interiors shown are 36 SH with Pure Linen cabinets, Trend Beige III decor.





2022 PHAETON

## MILES AHEAD IN EVERY WAY.

Introducing the new 2022 Tiffin Phaeton. Incredibly luxurious and equipped with an abundance of upscale amenities as standard features, the Phaeton continues to remain a customer favorite. And no wonder. Behind the wheel, both the PowerGlide® Chassis\* and the Freightliner® Chassis will help ensure every mile is smooth. Then, whether you're relaxing, cooking, or sleeping, you'll discover smartly engineered touches that make every trip an adventure in style. Available in a multitude of floor plans, finishes, and décors, the Phaeton offers a stunning degree of high-end elegance and comfort, yet remains well within reach. Let every journey be an unforgettable one. In your new 2022 Phaeton.

\*Only Available on the 40 IH and 44 OH

Top to bottom: Driver Side Booth Dinette and Theatre Seats; Bedroom with Memory Foam King Mattress; Passenger Side Air Coil Sofa. All Interiors shown are 36 SH with Pure Linen cabinets, Trend Beige III decor.

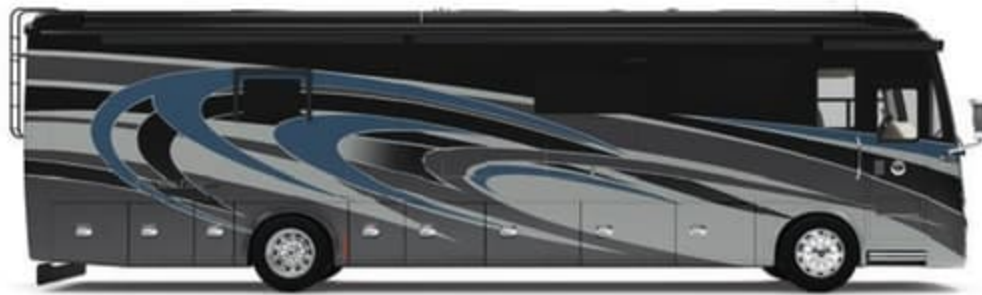




### Premium Paint System

Our eight-step full-body paint system features premium grade paints sealed with four layers of superclear coat with ultraviolet protection. An additional layer of high-performance film protects the front of the coach and select areas.

### GENERATION 9



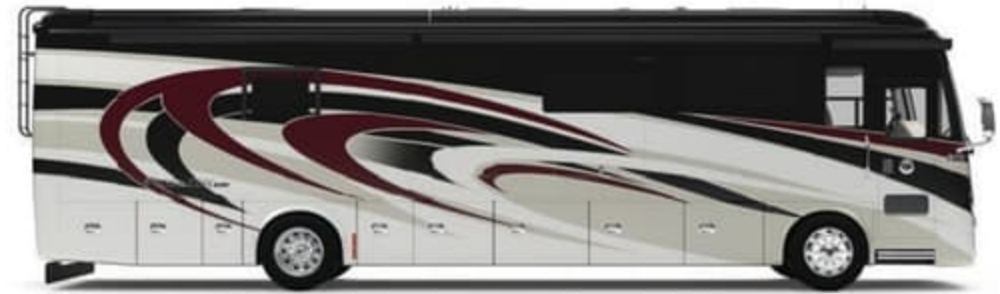
G9 EURO BLUE



G9 FIRE OPAL



G9 FROSTED GRANITE



G9 MAROON CORAL



G9 NASA



G9 SUNLIT SAND



G9 WHITE MAHOGANY



## Premium Paint System

Our eight-step full-body paint system features premium grade paints sealed with four layers of superclear coat with ultraviolet protection. An additional layer of high-performance film protects the front of the coach and select areas.

## GENERATION 9



G9 EURO BLUE



G9 FIRE OPAL



G9 FROSTED GRANITE



G9 MAROON CORAL



G9 NASA



G9 SUNLIT SAND

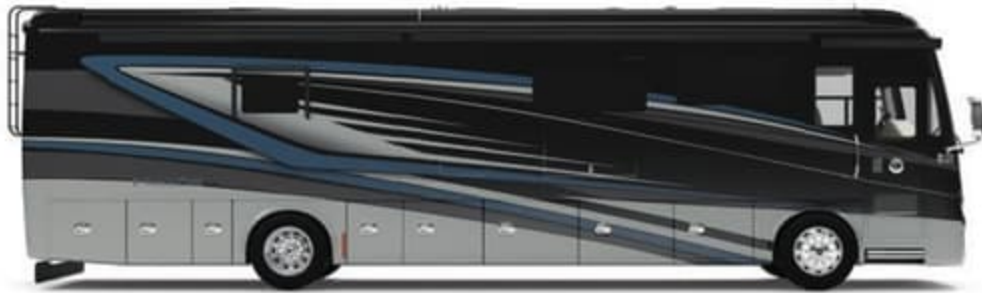


G9 WHITE MAHOGANY



Our Generation 9 and Generation 10 premium paint schemes now give you 14 different ways to make your 2022 Phaeton your very own. To learn more, visit [tiffinmotorhomes.com](http://tiffinmotorhomes.com).

### GENERATION 10



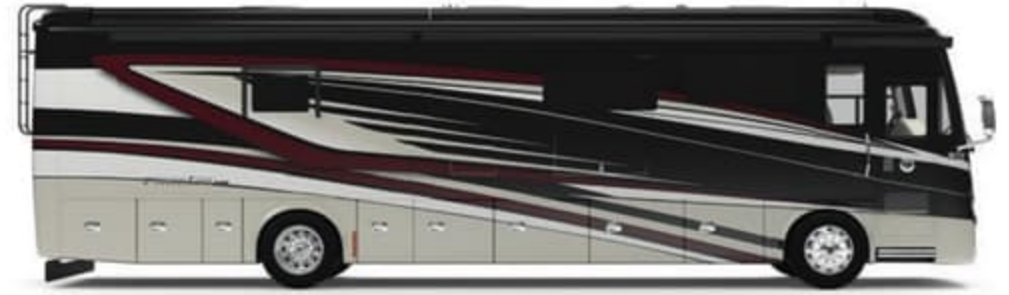
G10 EURO BLUE



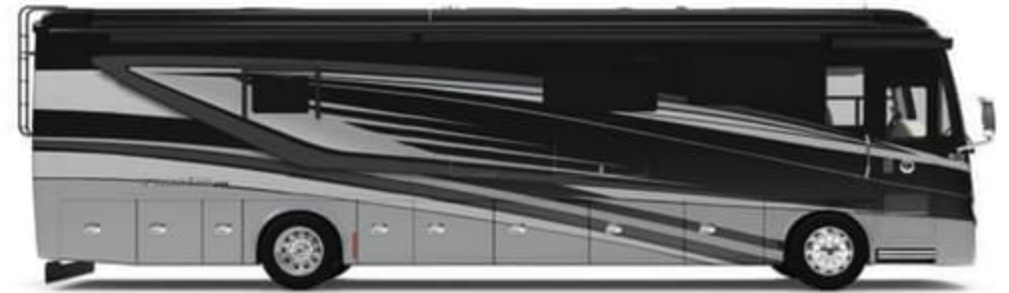
G10 FIRE OPAL



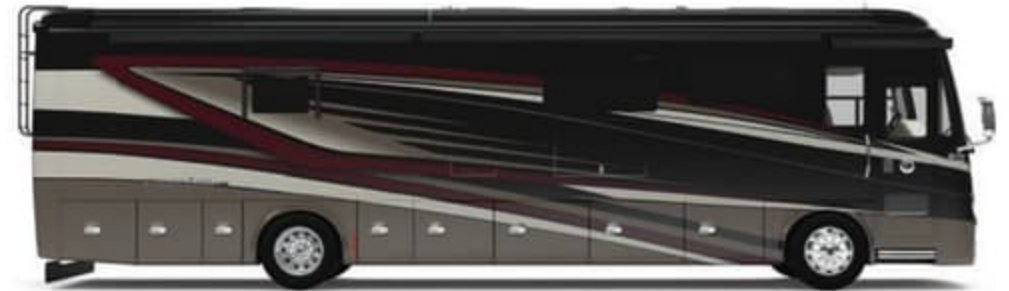
G10 FROSTED GRANITE



G10 MAROON CORAL



G10 NASA



G10 SUNLIT SAND

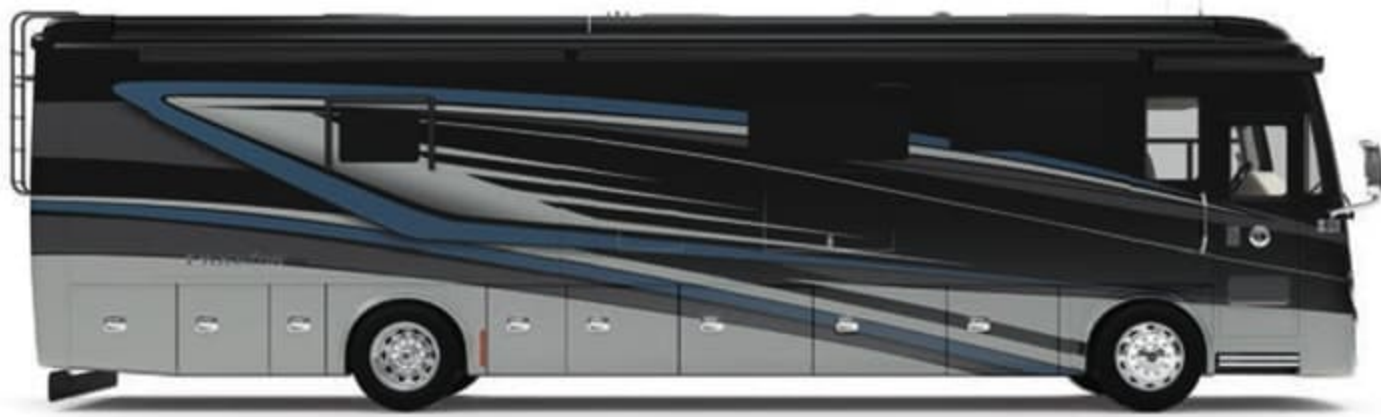


G10 WHITE MAHOGANY



Our Generation 9 and Generation 10 premium paint schemes now give you 14 different ways to make your 2022 Phaeton your very own. To learn more, visit [tiffinmotorhomes.com](http://tiffinmotorhomes.com).

## GENERATION 10



G10 EURO BLUE



G10 FIRE OPAL



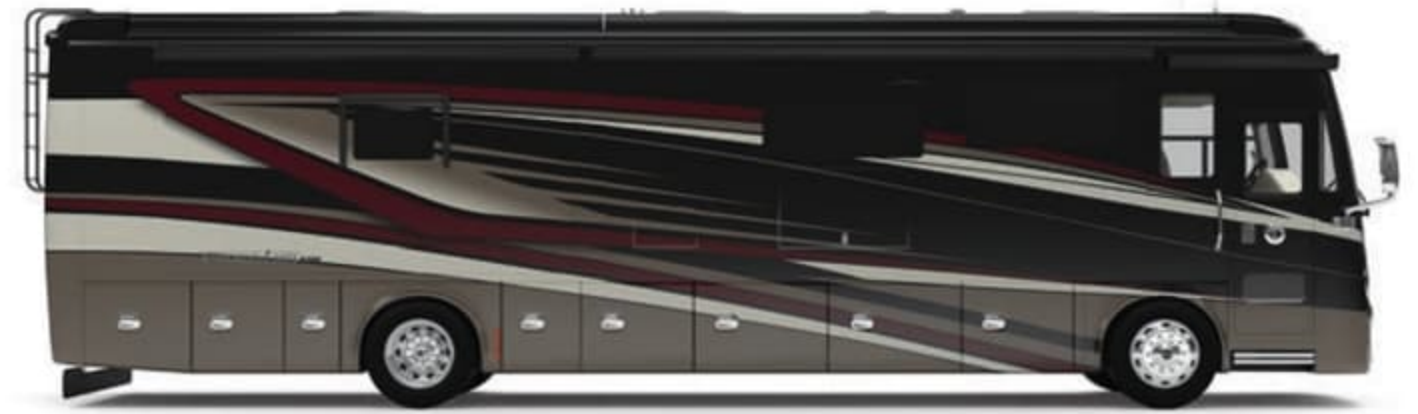
G10 FROSTED GRANITE



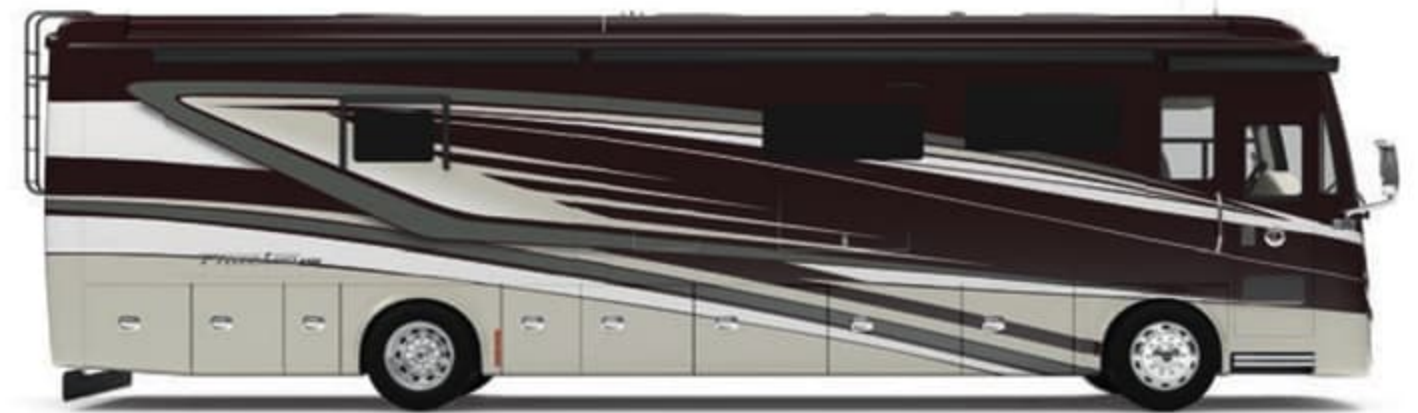
G10 MAROON CORAL



G10 NASA



G10 SUNLIT SAND



G10 WHITE MAHOGANY



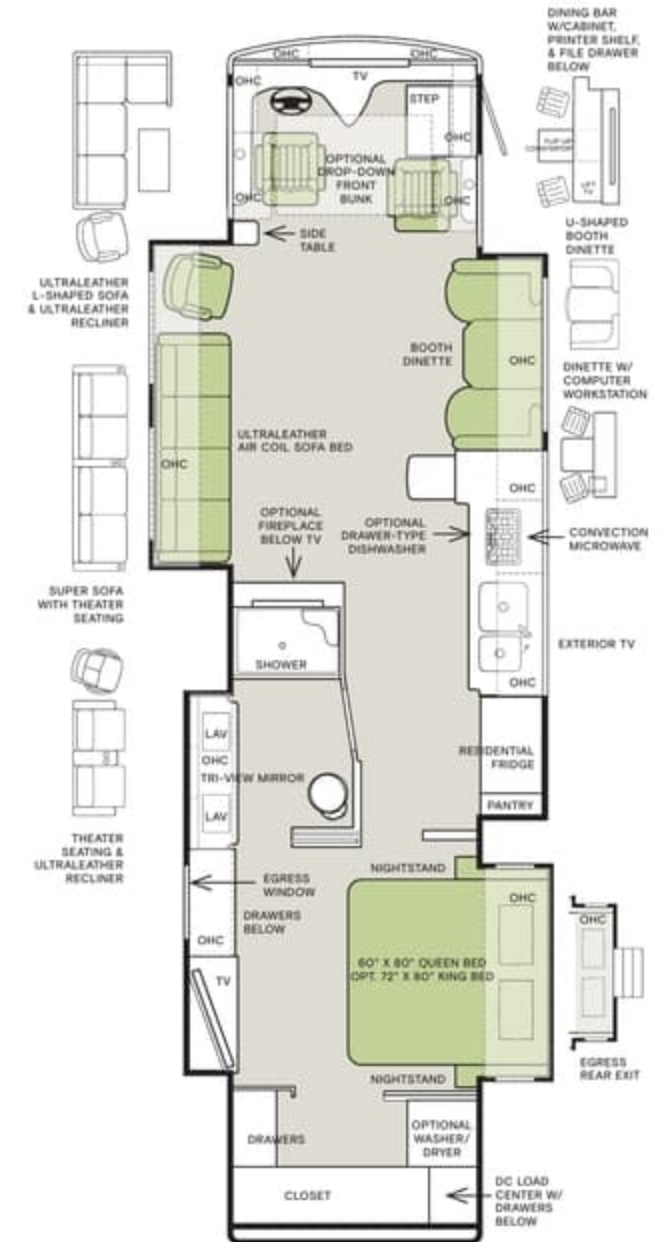
36 SH

37 BH

40 AH



The design of every Phaeton floor plan must meet four essential criteria: Maximum space, Optimal organization, Relaxation plus, and Elegant atmosphere. Tiffin's MORE Plans offer your family the most comfortable layout for life on the road.



If optional furniture combinations are selected, window locations may vary from diagram shown. All options may not be available in every model. Because of progressive improvements and specifications, standard and optional equipment are subject to change without notice or obligation. For a complete and up-to-date list of available options and specifications, visit [tiffinmotorhomes.com](http://tiffinmotorhomes.com).



Floor Plans

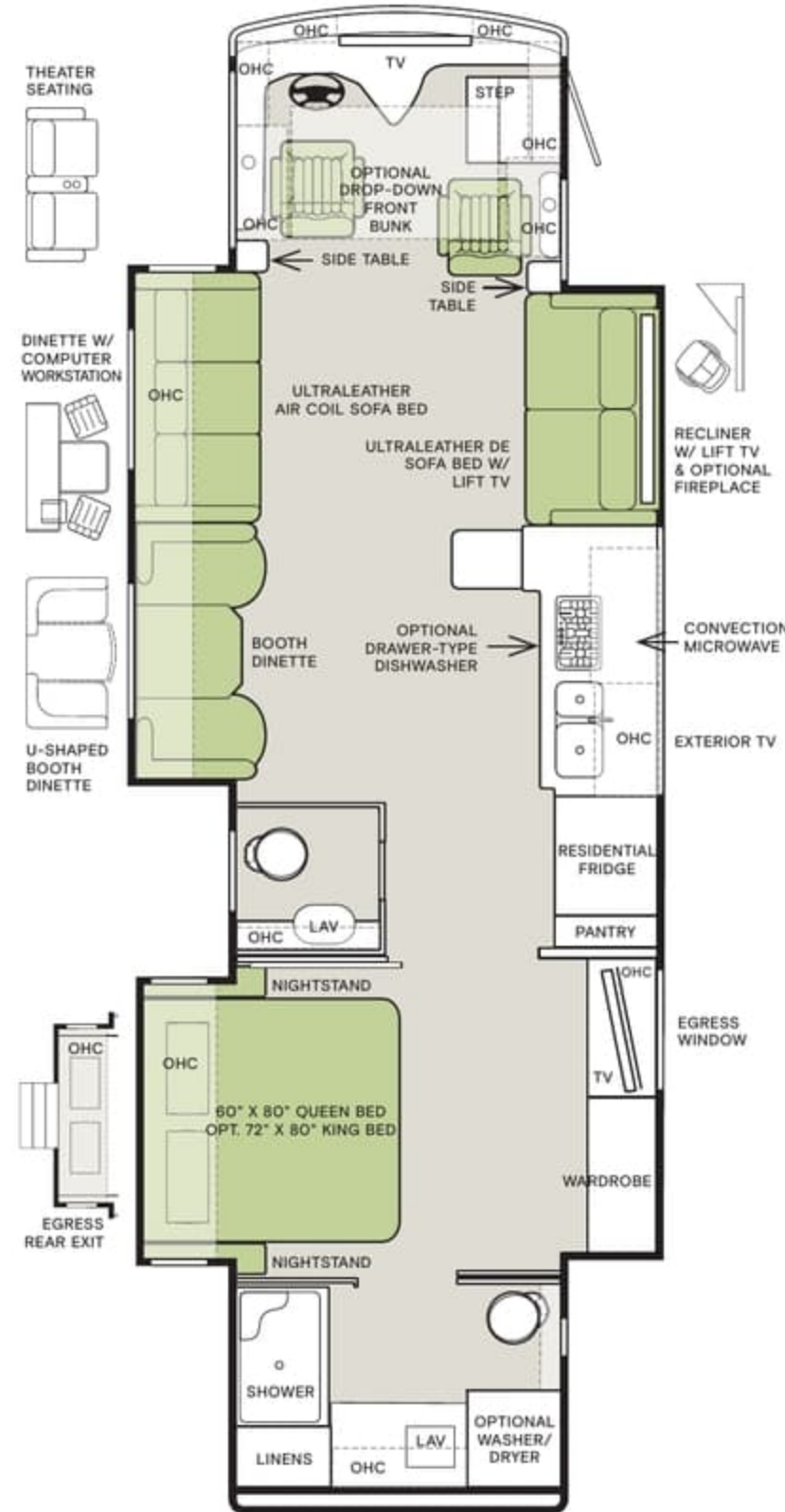


The design of every Phaeton floor plan must meet four essential criteria: Maximum space, Optimal organization, Relaxation plus, and Elegant atmosphere. Tiffin's MORE Plans offer your family the most comfortable layout for life on the road.

36 SH



37 BH



40 AH



If optional furniture combinations are selected, window locations may vary from diagram shown.  
 All options may not be available in every model. Because of progressive improvements and specifications, standard and optional equipment are subject to change without notice or obligation.  
 For a complete and up-to-date list of available options and specifications, visit [tiffinmotorhomes.com](http://tiffinmotorhomes.com).



40 IH



40 QBH



40 QKH



44 OH

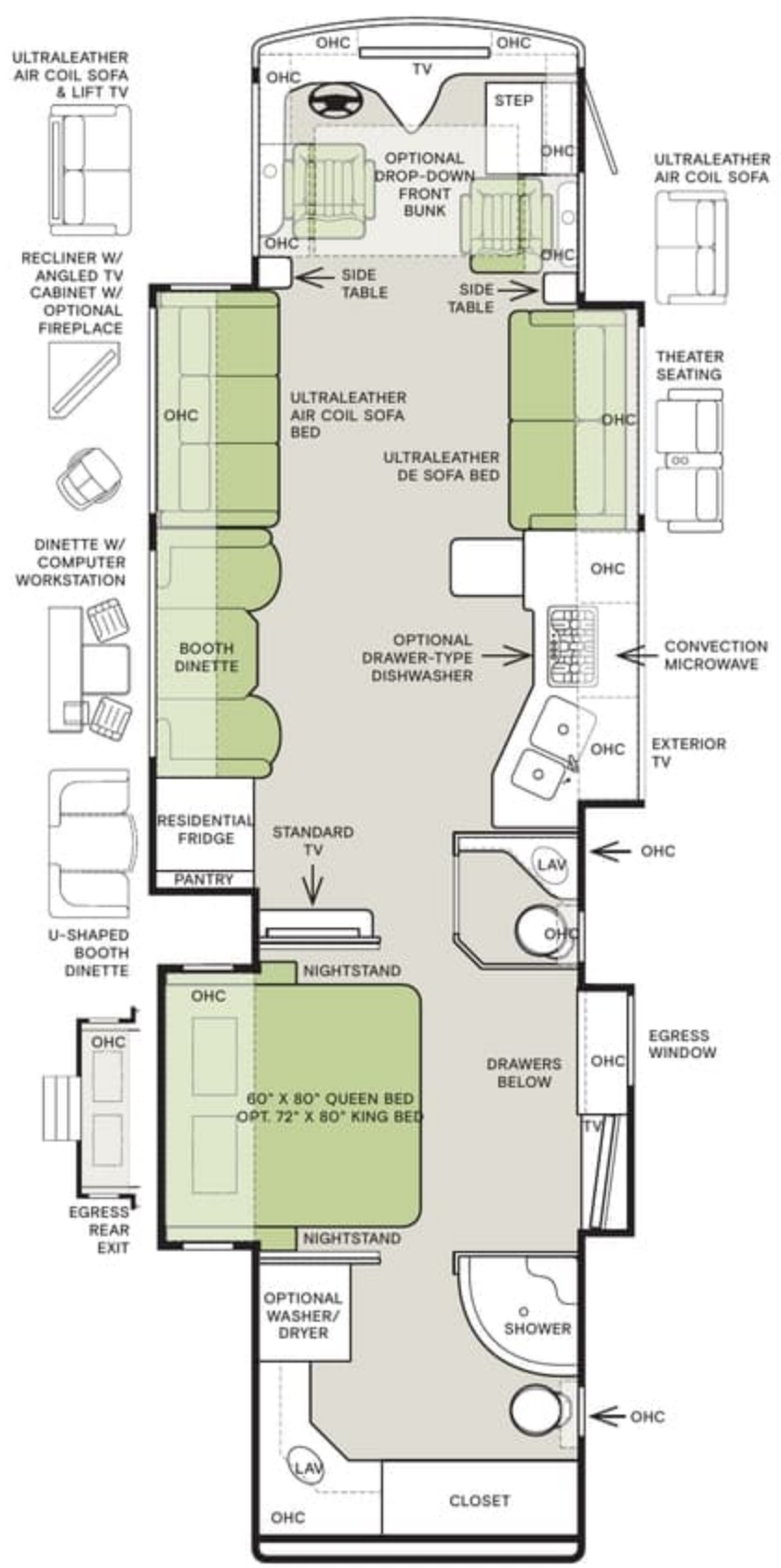




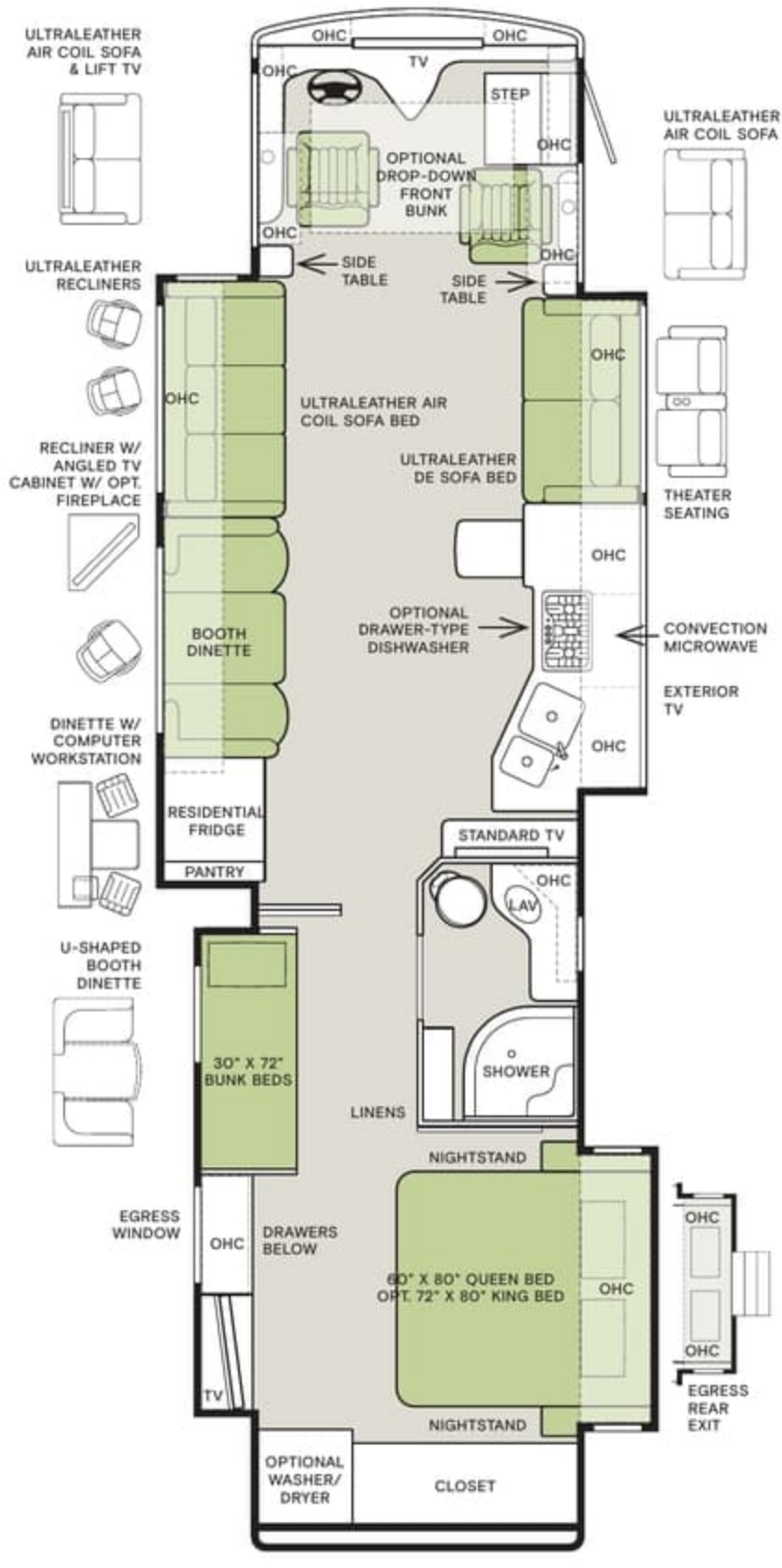
40 IH



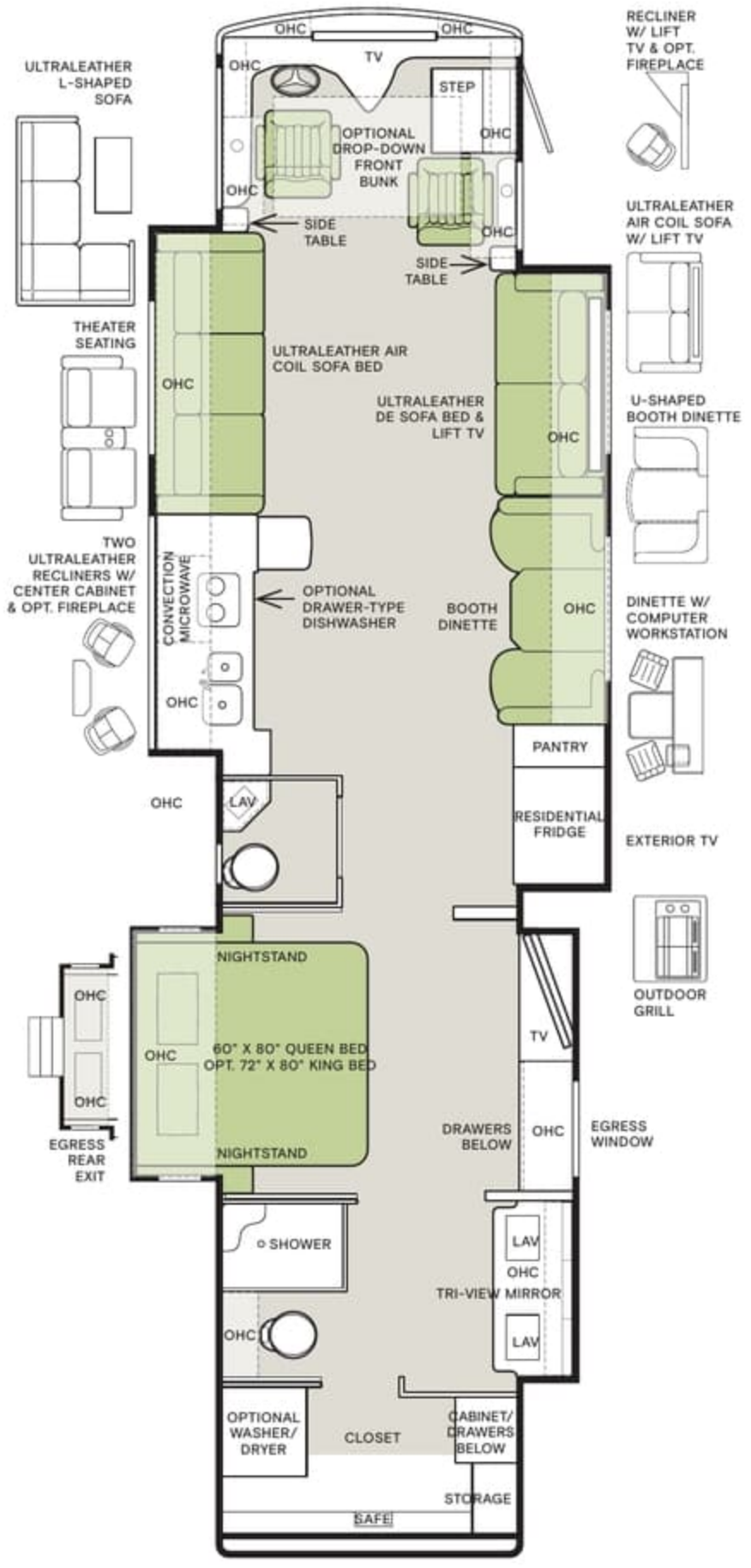
40 QBH



40 QKH



44 OH





## Interior Décor

Make your experience on the road all your own. Express yourself by choosing the interior appointments such as cabinet finishes, flooring, and décor ensembles for every part of your motorhome. In the 2022 Phaeton, you'll be able to travel in style no matter where you go.

### ULTRALEATHER



BELGIAN



COCOON

### CABINETS



AMBER GLAZED



SHADOW



PURE LINEN<sup>1</sup>

<sup>1</sup> Requires Luster Sheen

### FLOORING



VICINITY (S)

MATTE FINISH TILE



BIANCO NAVARO (O)

GLOSSY FINISH TILE

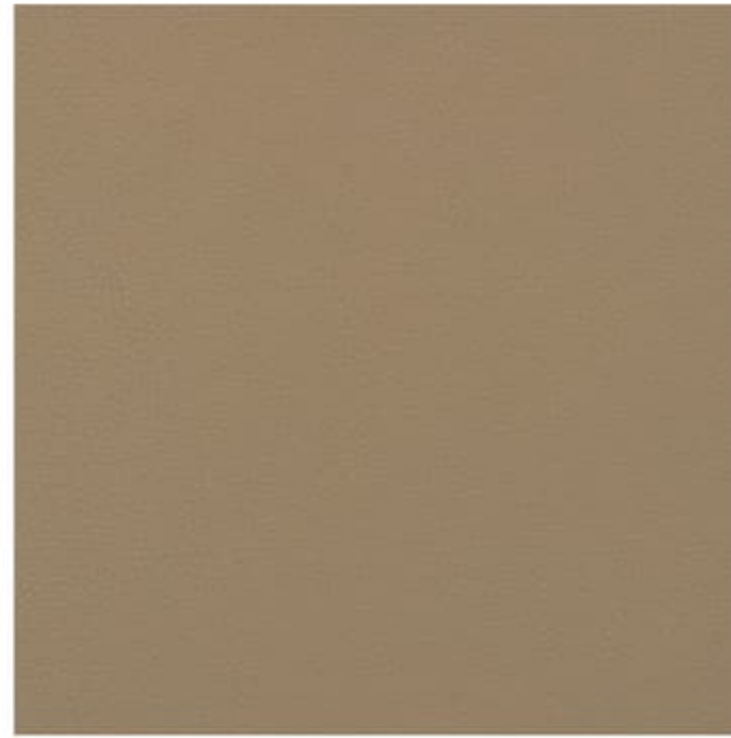
Because of progressive improvements and specifications, standard and optional equipment are subject to change without notice or obligation. For a complete and up-to-date list of available options and specifications, visit [tiffinmotorhomes.com](http://tiffinmotorhomes.com).



## Interior Décor

Make your experience on the road all your own. Express yourself by choosing the interior appointments such as cabinet finishes, flooring, and décor ensembles for every part of your motorhome. In the 2022 Phaeton, you'll be able to travel in style no matter where you go.

### ULTRALEATHER



BELGIAN



COCOON

### CABINETS



AMBER GLAZED



SHADOW



PURE LINEN<sup>1</sup>

<sup>1</sup> Requires Luster Sheen

### FLOORING



VICINITY (S)

MATTE FINISH TILE



BIANCO NAVARO (O)

GLOSSY FINISH TILE

Because of progressive improvements and specifications, standard and optional equipment are subject to change without notice or obligation. For a complete and up-to-date list of available options and specifications, visit [tiffinmotorhomes.com](http://tiffinmotorhomes.com).



ARTISTS TAUPE III



WINDOW TREATMENT



BACKSPLASH



COUNTERTOP



LIVING ROOM



MASTER SUITE

COASTAL SAND III



WINDOW TREATMENT



BACKSPLASH



COUNTERTOP



LIVING ROOM



MASTER SUITE

TREND BEIGE III



WINDOW TREATMENT



BACKSPLASH



COUNTERTOP



LIVING ROOM



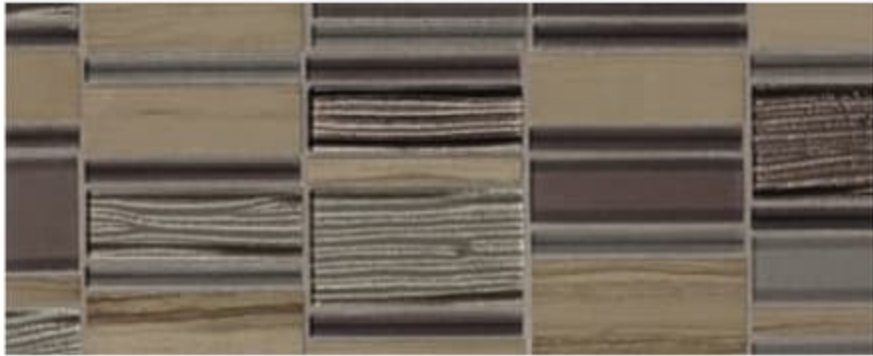
MASTER SUITE



ARTISTS TAUPE III



WINDOW TREATMENT



BACKSPLASH



COUNTERTOP



LIVING ROOM

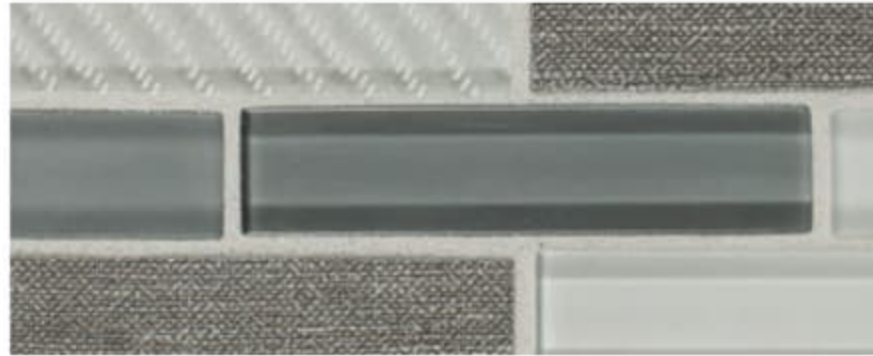


MASTER SUITE

COASTAL SAND III



WINDOW TREATMENT



BACKSPLASH



COUNTERTOP



LIVING ROOM

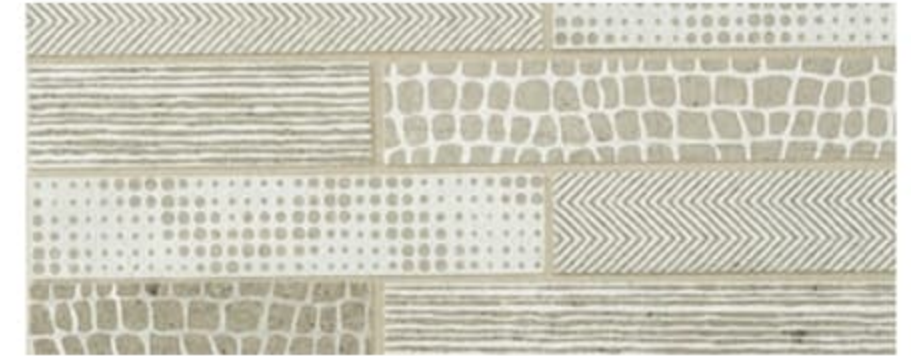


MASTER SUITE

TREND BEIGE III



WINDOW TREATMENT



BACKSPLASH



COUNTERTOP



LIVING ROOM



MASTER SUITE



## Specifications

### CHASSIS

- Air Ride 4 Air Bags Up to 40', 6 Air Bags on Tag Axle Units
- Four Aluminum Wheels (6 with Tag Axle)
- 3-stage Compression Brake on all Freightliner Chassis
- 2-stage Compression Brake on all PowerGlide Chassis
- Adjustable Accelerator & Brake Pedals
- Allison 3000 MH 6-speed Automatic Transmission
- Air Brakes with Automatic Slack Adjusters and ABS
- 18" Smart Wheel Steering Wheel
- Adaptive Cruise Control
- Collision Mitigation with Forward Warning and Active Braking
- Emergency Start Switch
- Hydraulic Automatic Leveling Jacks
- Tire Pressure Monitoring
- Electronic Stability Control
- Automatic Traction Control

| CHASSIS OPTIONS  | 36 SH         | 37 BH         | 40 AH         | 40 IH         | 40 QBH        | 40 QKH        | 44 OH         |
|--|---------------|---------------|---------------|---------------|---------------|---------------|---------------|
| Freightliner XCM with Cummins L9 380 HP/1150 lb Torque     | S             | S             | S             | —             | S             | S             | —             |
| Freightliner XCR XSH with Cummins L9 380 HP/1150 lb Torque | —             | —             | —             | S             | —             | —             | —             |
| Freightliner XCR XSH with Cummins L9 450 HP/1250 lb Torque | —             | —             | —             | O             | —             | —             | S             |
| PowerGlide XSH with Cummins L9 380 HP/1150 lb Torque       | —             | —             | —             | O             | —             | —             | —             |
| PowerGlide XSH with Cummins L9 450 HP/1250 lb Torque       | —             | —             | —             | O             | —             | —             | O             |
| Independent Front Suspension                               | —             | —             | —             | S             | —             | —             | S             |
| GAWR—Front (lb)  | 14,320        | 14,320        | 14,320        | 15,600        | 14,320        | 14,320        | 15,600        |
| GAWR—Rear (lb)   | 24,000        | 24,000        | 24,000        | 24,000        | 24,000        | 24,000        | 20,000        |
| GAWR Tag Axle (lb)   | —             | —             | —             | —             | —             | —             | 10,000        |
| GVWR (lb)  | 38,320        | 38,320        | 38,320        | 39,600        | 38,320        | 38,320        | 45,600        |
| GCWR (lb)  | 48,320        | 48,320        | 48,320        | 49,600        | 48,320        | 48,320        | 55,600        |
| Wheel Base   | 222"          | 234"          | 266"          | 266"          | 266"          | 266"          | 310"          |
| Tire Size  | 275/80 R 22.5 | 275/80 R 22.5 | 275/80 R 22.5 | 295/80 R 22.5 | 275/80 R 22.5 | 275/80 R 22.5 | 295/80 R 22.5 |
| Fuel Tank (gal.) — Dual Fuel Fill                          | 100           | 100           | 100           | 100           | 100           | 100           | 100           |
| DEF Tank <sup>1</sup> (gal.) Freightliner Chassis          | 13            | 13            | 13            | 13            | 13            | 13            | —             |
| DEF Tank <sup>1</sup> (gal.) PowerGlide Chassis            | —             | —             | —             | 10            | —             | —             | 10            |
| Alternator Amps Freightliner Chassis                       | 160           | 160           | 160           | 240           | 160           | 160           | —             |
| Alternator Amps PowerGlide Chassis                         | —             | —             | —             | 210           | —             | —             | 210           |
| Hitch Rating (lb) <sup>2</sup>                             | 10,000        | 10,000        | 10,000        | 10,000        | 10,000        | 10,000        | 10,000        |
| Steerable Tag Axle   | —             | —             | —             | —             | —             | —             | S             |

<sup>1</sup> Diesel Exhaust Fluid (DEF) is the active component used in Selective Catalytic Reduction (SCR) engines to reduce nitrogen oxide emissions by 90% to meet EPA standards.

<sup>2</sup> Maximum Trailer Weight is dependent on the loading and towing variables which include the GVWR, GAWR, and GCWR, as well as adequate trailer brakes.

| WEIGHTS AND MEASURES                                   | 36 SH  | 37 BH  | 40 AH  | 40 IH  | 40 QBH | 40 QKH | 44 OH        |
|--|--------|--------|--------|--------|--------|--------|--------------|
| Overall Length (approximately) <sup>3</sup>            | 37' 2" | 38' 2" | 41' 4" | 41' 4" | 41' 4" | 41' 4" | 45'          |
| Overall Height (maximum)                               | 12' 7" | 12' 7" | 12' 7" | 13' 3" | 12' 7" | 12' 7" | 13' 3"       |
| Interior Height  | 83"    | 83"    | 83"    | 83"    | 83"    | 83"    | 83"          |
| Overall Width <sup>3</sup>                             | 101"   | 101"   | 101"   | 101"   | 101"   | 101"   | 101"         |
| Interior Width   | 96"    | 96"    | 96"    | 96"    | 96"    | 96"    | 96"          |
| Fresh Water (gal.)                                     | 90     | 90     | 90     | 100    | 90     | 90     | 100          |
| Black Water (gal.)                                     | 50     | 50     | 50     | 55     | 50     | 50     | 55           |
| Grey Water (gal.)                                      | 66     | 66     | 66     | 100    | 66     | 66     | 100          |
| LPG Tank (gallons; can only be filled to 80% capacity) | 35.7   | 35.7   | 35.7   | 35.7   | 35.7   | 35.7   | All Electric |
| Basement Storage (cubic ft. — app.)                    | 122    | 122    | 157    | 232    | 157    | 157    | 253          |
| Minimum Garage Height                                  | 14'    | 14'    | 14'    | 14'    | 14'    | 14'    | 14'          |

<sup>3</sup> The approximated coach width and length does not include side view mirrors and rear ladders.

### PLUMBING AND ELECTRICAL

- 10.0 kw Onan® Manual Slide-out Generator
- Spyder Multiplex Controls with App Compatibility
- Auto Generator Start
- Electric Hose Reel
- Electric Power Cord Reel
- Six 6 V House Batteries
- Black Tank Flush System
- Water Filter
- 110 V Exterior Receptacle
- Gravity Water Fill
- Tank Level Monitor System
- Heated Water and Holding Tank Compartments
- 2000 Watt Inverter with 100 Amp Converter and Transfer Switching
- AquaView ShowerMiser
- DISH® Network Receiver (requires subscription)
- House and Chassis Battery Disconnect Switch
- Extraordinaire™ AC System
- TRC Hi/Lo Voltage Protection
- Two Ducted Furnaces
- Three Roof ACs with Heat Pumps

| ELECTRICAL OPTIONS  | 36 SH | 37 BH | 40 AH | 40 IH | 40 QBH | 40 QKH | 44 OH |
|---|-------|-------|-------|-------|--------|--------|-------|
| In-motion Satellite Dish <sup>4</sup>   | O     | O     | O     | O     | O      | O      | O     |
| Pre-wired for Winegard® TRAV'LER  | O     | O     | O     | O     | O      | O      | O     |
| Wi-Fi Ranger™   | O     | O     | O     | O     | O      | O      | O     |
| Truma Gas Continuous Water Heater   | S     | S     | S     | S     | S      | S      | —     |
| All-electric Coach: Includes Aqua-Hot Hydronic Heating System with Continuous Hot Water and Induction Cooktop | O     | O     | O     | O     | O      | O      | S     |
| Prep for Solar Panels   | O     | O     | O     | O     | O      | O      | O     |
| Three Solar Panels  | O     | O     | O     | O     | O      | O      | O     |
| Extended Cycle Batteries  | O     | O     | O     | O     | O      | O      | O     |

<sup>4</sup> High-definition programming is not available on a domed satellite antenna unless you subscribe to DISH Network®.

### EXTERIOR

- Large Tinted One-piece Windshield
- Heated Power Mirrors with Integrated Cameras
- Single-motor Intermittent Wiper
- Automatic Headlights
- Fog Lights
- Daytime Running Lights
- Lockable Swing-out Storage Doors with Gas Shocks
- Window Awning Package (2 Windows)
- Full-body Paint with Protective Film on Select Locations
- Remote Locking System for Entry Door
- Chrome Handles on Compartment Doors
- Deadbolt Front Entrance Door
- Chrome Double Electric Step
- Flush Mounted and Painted-frame Dual Pane Windows
- Exterior Patio LED Light
- Girard Power Patio and Door Awnings
- Motion Sensor Lighting for Exterior Storage
- Roof Ladder
- Fiberglass Front and Rear Caps
- Docking Lights
- Custom Mud Flap
- Undercoating
- Digital TV Antenna
- Back-up Camera
- Cable-ready TV Hook-up
- Air Horns
- Exterior Flat-panel TV (Includes Sound Bar)

| EXTERIOR OPTIONS                           | 36 SH | 37 BH | 40 AH | 40 IH | 40 QBH | 40 QKH | 44 OH |
|--|-------|-------|-------|-------|--------|--------|-------|
| One Storage Compartment Slide-out Tray     | O     | O     | O     | O     | O      | O      | O     |
| Two Storage Compartment Slide-out Trays    | —     | —     | O     | O     | O      | O      | O     |
| Two Roof-mounted Patio Awnings             | O     | O     | O     | O     | O      | O      | O     |
| Outdoor Grill (Includes Tray) <sup>5</sup> | —     | —     | —     | O     | —      | —      | O     |

<sup>5</sup> Requires (1) Exterior Slide Tray.

Because of progressive improvements and specifications, standard and optional equipment are subject to change without notice or obligation. For a complete and up-to-date list of available options and specifications, visit [tiffinmotorhomes.com](http://tiffinmotorhomes.com).



## Specifications

### CHASSIS

- Air Ride 4 Air Bags Up to 40', 6 Air Bags on Tag Axle Units
- Four Aluminum Wheels (6 with Tag Axle)
- 3-stage Compression Brake on all Freightliner Chassis
- 2-stage Compression Brake on all PowerGlide Chassis
- Adjustable Accelerator & Brake Pedals
- Allison 3000 MH 6-speed Automatic Transmission
- Air Brakes with Automatic Slack Adjusters and ABS
- 18" Smart Wheel Steering Wheel
- Adaptive Cruise Control
- Collision Mitigation with Forward Warning and Active Braking
- Emergency Start Switch
- Hydraulic Automatic Leveling Jacks
- Tire Pressure Monitoring
- Electronic Stability Control
- Automatic Traction Control

| CHASSIS OPTIONS  | 36 SH         | 37 BH         | 40 AH         | 40 IH         | 40 QBH        | 40 QKH        | 44 OH         |
|--|---------------|---------------|---------------|---------------|---------------|---------------|---------------|
| Freightliner XCM with Cummins L9 380 HP/1150 lb Torque     | S             | S             | S             | —             | S             | S             | —             |
| Freightliner XCR XSH with Cummins L9 380 HP/1150 lb Torque | —             | —             | —             | S             | —             | —             | —             |
| Freightliner XCR XSH with Cummins L9 450 HP/1250 lb Torque | —             | —             | —             | O             | —             | —             | S             |
| PowerGlide XSH with Cummins L9 380 HP/1150 lb Torque       | —             | —             | —             | O             | —             | —             | —             |
| PowerGlide XSH with Cummins L9 450 HP/1250 lb Torque       | —             | —             | —             | O             | —             | —             | O             |
| Independent Front Suspension                               | —             | —             | —             | S             | —             | —             | S             |
| GAWR—Front (lb)  | 14,320        | 14,320        | 14,320        | 15,600        | 14,320        | 14,320        | 15,600        |
| GAWR—Rear (lb)   | 24,000        | 24,000        | 24,000        | 24,000        | 24,000        | 24,000        | 20,000        |
| GAWR Tag Axle (lb)   | —             | —             | —             | —             | —             | —             | 10,000        |
| GVWR (lb)  | 38,320        | 38,320        | 38,320        | 39,600        | 38,320        | 38,320        | 45,600        |
| GCWR (lb)  | 48,320        | 48,320        | 48,320        | 49,600        | 48,320        | 48,320        | 55,600        |
| Wheel Base   | 222"          | 234"          | 266"          | 266"          | 266"          | 266"          | 310"          |
| Tire Size  | 275/80 R 22.5 | 275/80 R 22.5 | 275/80 R 22.5 | 295/80 R 22.5 | 275/80 R 22.5 | 275/80 R 22.5 | 295/80 R 22.5 |
| Fuel Tank (gal.) — Dual Fuel Fill                          | 100           | 100           | 100           | 100           | 100           | 100           | 100           |
| DEF Tank <sup>1</sup> (gal.) Freightliner Chassis          | 13            | 13            | 13            | 13            | 13            | 13            | —             |
| DEF Tank <sup>1</sup> (gal.) PowerGlide Chassis            | —             | —             | —             | 10            | —             | —             | 10            |
| Alternator Amps Freightliner Chassis                       | 160           | 160           | 160           | 240           | 160           | 160           | —             |
| Alternator Amps PowerGlide Chassis                         | —             | —             | —             | 210           | —             | —             | 210           |
| Hitch Rating (lb) <sup>2</sup>                             | 10,000        | 10,000        | 10,000        | 10,000        | 10,000        | 10,000        | 10,000        |
| Steerable Tag Axle   | —             | —             | —             | —             | —             | —             | S             |

<sup>1</sup> Diesel Exhaust Fluid (DEF) is the active component used in Selective Catalytic Reduction (SCR) engines to reduce nitrogen oxide emissions by 90% to meet EPA standards.

<sup>2</sup> Maximum Trailer Weight is dependent on the loading and towing variables which include the GVWR, GAWR, and GCWR, as well as adequate trailer brakes.

| WEIGHTS AND MEASURES                                   | 36 SH  | 37 BH  | 40 AH  | 40 IH  | 40 QBH | 40 QKH | 44 OH        |
|--|--------|--------|--------|--------|--------|--------|--------------|
| Overall Length (approximately) <sup>3</sup>            | 37' 2" | 38' 2" | 41' 4" | 41' 4" | 41' 4" | 41' 4" | 45'          |
| Overall Height (maximum)                               | 12' 7" | 12' 7" | 12' 7" | 13' 3" | 12' 7" | 12' 7" | 13' 3"       |
| Interior Height  | 83"    | 83"    | 83"    | 83"    | 83"    | 83"    | 83"          |
| Overall Width <sup>3</sup>                             | 101"   | 101"   | 101"   | 101"   | 101"   | 101"   | 101"         |
| Interior Width   | 96"    | 96"    | 96"    | 96"    | 96"    | 96"    | 96"          |
| Fresh Water (gal.)                                     | 90     | 90     | 90     | 100    | 90     | 90     | 100          |
| Black Water (gal.)                                     | 50     | 50     | 50     | 55     | 50     | 50     | 55           |
| Grey Water (gal.)                                      | 66     | 66     | 66     | 100    | 66     | 66     | 100          |
| LPG Tank (gallons; can only be filled to 80% capacity) | 35.7   | 35.7   | 35.7   | 35.7   | 35.7   | 35.7   | All Electric |
| Basement Storage (cubic ft. — app.)                    | 122    | 122    | 157    | 232    | 157    | 157    | 253          |
| Minimum Garage Height                                  | 14'    | 14'    | 14'    | 14'    | 14'    | 14'    | 14'          |

<sup>3</sup> The approximated coach width and length does not include side view mirrors and rear ladders.

### PLUMBING AND ELECTRICAL

- 10.0 kw Onan® Manual Slide-out Generator
- Spyder Multiplex Controls with App Compatibility
- Auto Generator Start
- Electric Hose Reel
- Electric Power Cord Reel
- Six 6 V House Batteries
- Black Tank Flush System
- Water Filter
- 110 V Exterior Receptacle
- Gravity Water Fill
- Tank Level Monitor System
- Heated Water and Holding Tank Compartments
- 2000 Watt Inverter with 100 Amp Converter and Transfer Switching
- AquaView ShowerMiser
- DISH® Network Receiver (requires subscription)
- House and Chassis Battery Disconnect Switch
- Extraordinaire™ AC System
- TRC Hi/Lo Voltage Protection
- Two Ducted Furnaces
- Three Roof ACs with Heat Pumps

| ELECTRICAL OPTIONS  | 36 SH | 37 BH | 40 AH | 40 IH | 40 QBH | 40 QKH | 44 OH |
|---|-------|-------|-------|-------|--------|--------|-------|
| In-motion Satellite Dish <sup>4</sup>   | O     | O     | O     | O     | O      | O      | O     |
| Pre-wired for Winegard® TRAV'LER  | O     | O     | O     | O     | O      | O      | O     |
| Wi-Fi Ranger™   | O     | O     | O     | O     | O      | O      | O     |
| Truma Gas Continuous Water Heater   | S     | S     | S     | S     | S      | S      | —     |
| All-electric Coach: Includes Aqua-Hot Hydronic Heating System with Continuous Hot Water and Induction Cooktop | O     | O     | O     | O     | O      | O      | S     |
| Prep for Solar Panels   | O     | O     | O     | O     | O      | O      | O     |
| Three Solar Panels  | O     | O     | O     | O     | O      | O      | O     |
| Extended Cycle Batteries  | O     | O     | O     | O     | O      | O      | O     |

<sup>4</sup> High-definition programming is not available on a domed satellite antenna unless you subscribe to DISH Network®.

### EXTERIOR

- Large Tinted One-piece Windshield
- Heated Power Mirrors with Integrated Cameras
- Single-motor Intermittent Wiper
- Automatic Headlights
- Fog Lights
- Daytime Running Lights
- Lockable Swing-out Storage Doors with Gas Shocks
- Window Awning Package (2 Windows)
- Full-body Paint with Protective Film on Select Locations
- Remote Locking System for Entry Door
- Chrome Handles on Compartment Doors
- Deadbolt Front Entrance Door
- Chrome Double Electric Step
- Flush Mounted and Painted-frame Dual Pane Windows
- Exterior Patio LED Light
- Girard Power Patio and Door Awnings
- Motion Sensor Lighting for Exterior Storage
- Roof Ladder
- Fiberglass Front and Rear Caps
- Docking Lights
- Custom Mud Flap
- Undercoating
- Digital TV Antenna
- Back-up Camera
- Cable-ready TV Hook-up
- Air Horns
- Exterior Flat-panel TV (Includes Sound Bar)

| EXTERIOR OPTIONS                           | 36 SH | 37 BH | 40 AH | 40 IH | 40 QBH | 40 QKH | 44 OH |
|--|-------|-------|-------|-------|--------|--------|-------|
| One Storage Compartment Slide-out Tray     | O     | O     | O     | O     | O      | O      | O     |
| Two Storage Compartment Slide-out Trays    | —     | —     | O     | O     | O      | O      | O     |
| Two Roof-mounted Patio Awnings             | O     | O     | O     | O     | O      | O      | O     |
| Outdoor Grill (Includes Tray) <sup>5</sup> | —     | —     | —     | O     | —      | —      | O     |

<sup>5</sup> Requires (1) Exterior Slide Tray.

Because of progressive improvements and specifications, standard and optional equipment are subject to change without notice or obligation. For a complete and up-to-date list of available options and specifications, visit [tiffinmotorhomes.com](http://tiffinmotorhomes.com).



## INTERIOR

- Soft Touch Vinyl Ceiling
- Treated Carpet in Slide-outs
- Handcrafted Cabinet Fascias and Doors with Concealed Hinges
- Sound Bar with Subwoofer
- BluRay Player in Bedroom Connected with Sound Bar
- Solar and Privacy Shades
- LED Lighting
- Power Roof Vents
- Smoke Detector
- Central Vacuum Cleaner with VacPan
- Soft Close Drawers

| INTERIOR OPTIONS      |  | 36 SH | 37 BH | 40 AH | 40 IH | 40 QBH | 40 QKH | 44 OH |
|-----------------------|--|-------|-------|-------|-------|--------|--------|-------|
| Handcrafted Cabinetry | Amber Glazed                             | O     | O     | O     | O     | O      | O      | O     |
|                       | Pure Linen <sup>6</sup>                  | O     | O     | O     | O     | O      | O      | O     |
|                       | Shadow                                   | O     | O     | O     | O     | O      | O      | O     |
| Fabric Suites         | Artist Taupe III                         | O     | O     | O     | O     | O      | O      | O     |
|                       | Coastal Sand III                         | O     | O     | O     | O     | O      | O      | O     |
|                       | Trend Beige III                          | O     | O     | O     | O     | O      | O      | O     |
| Ultraleathers         | Belgian                                  | O     | O     | O     | O     | O      | O      | O     |
|                       | Cocoon                                   | O     | O     | O     | O     | O      | O      | O     |
| Floor Tiles           | Vicinity (Matte Finish)                  | S     | S     | S     | S     | S      | S      | S     |
|                       | Bianco Navaro (Glossy Finish)            | O     | O     | O     | O     | O      | O      | O     |
|                       | Gold Heat <sup>®</sup> Heated Tile Floor | O     | O     | O     | O     | O      | O      | O     |
| Stacked Washer/Dryer  | O  | O     | O     | O     | O     | O      | O      |       |

<sup>6</sup> Requires Luster Sheen.

## DRIVER'S COMPARTMENT

- 18" Smart Wheel Steering Wheel
- Digital Dash Cluster
- Adjustable Accelerator & Brake Pedals
- Ultraleather Power Driver and Passenger Seats with Integrated Seatbelt Brackets
- Ultraleather Power Passenger Seat with Footrest
- Contemporary Wraparound Dash
- Courtesy Drawer in Step Well
- Dual Dash Fans
- One Drawer in Dash
- Dual 12 V Dash Receptacle
- USB Dash Receptacle
- Power Solar & Privacy Windshield Shade
- Driver/Passenger Side Window Solar & Privacy Shades
- Color Rear Vision Monitor System with Side-view Cameras Activated by Turn Signals
- Single CD Player & AM/FM Stereo
- Satellite-ready Radio Includes Receiver & Antenna (requires subscription)
- Fire Extinguisher
- Front Overhead Flat-panel TV
- Solid Non-opening Window on Passenger Side
- Courtesy Light in Step Well
- Power Step Well Cover

| DRIVER'S COMPARTMENT OPTIONS        |  | 36 SH | 37 BH | 40 AH | 40 IH | 40 QBH | 40 QKH | 44 OH |
|-------------------------------------|--|-------|-------|-------|-------|--------|--------|-------|
| In-dash Navigation System           |  | O     | O     | O     | O     | O      | O      | O     |
| Mobileye Collision Avoidance System |  | O     | O     | O     | O     | O      | O      | O     |
| Blind Spot Monitoring System        |  | O     | O     | O     | O     | O      | O      | O     |
| Front Overhead Bunk                 |  | O     | O     | O     | O     | O      | O      | O     |

## KITCHEN

- Solid Surface Countertop with Stainless Steel Sink
- Solid Surface Sink Covers
- Expand-an-island
- Single Lever Sink Faucet with Sprayer
- Stainless Steel Microwave/Convection Oven
- Tile Galley Backsplash
- Stainless Steel Residential Refrigerator
- Panoramic Galley Window
- Cooktop with Convection Microwave

| KITCHEN OPTIONS |  | 36 SH | 37 BH | 40 AH | 40 IH | 40 QBH | 40 QKH | 44 OH |
|-----------------|--|-------|-------|-------|-------|--------|--------|-------|
| Dishwasher      |  | O     | O     | O     | O     | O      | O      | O     |

## BEDROOM

- Bed Comforter with Throw Pillows
- Under Bed Storage
- Memory Foam Queen Mattress
- Ceiling Fan
- Flat-panel TV
- Carbon Monoxide Detector
- LPG Leak Detector
- Chest of Drawers with Laundry Hamper
- Wardrobe with Automatic Light

| BEDROOM OPTIONS                                 |  | 36 SH | 37 BH | 40 AH | 40 IH | 40 QBH | 40 QKH | 44 OH |
|---|--|-------|-------|-------|-------|--------|--------|-------|
| Bunk Beds (30" x 72") with Convertible Wardrobe |  | -     | -     | -     | -     | -      | S      | -     |
| Sleep Number Mattress—Queen (60" x 80")         |  | O     | O     | O     | O     | O      | O      | O     |
| Sleep Number Mattress—King (72" x 80")          |  | O     | O     | O     | O     | O      | O      | O     |
| Memory Foam King Mattress (72" x 80")           |  | O     | O     | O     | O     | O      | O      | O     |
| Safe  |  | O     | O     | O     | O     | O      | O      | O     |
| Egress Rear Exit                                |  | O     | O     | O     | O     | O      | O      | O     |

## LIVING AREA/DINETTE

|  | 36 SH | 37 BH | 40 AH | 40 IH | 40 QBH | 40 QKH | 44 OH |
|--|-------|-------|-------|-------|--------|--------|-------|
| Ultraleather Booth Dinette/Sleeper on Passenger Side                       | -     | -     | S     | S     | -      | -      | S     |
| Ultraleather Booth Dinette/Sleeper on Driver Side                          | S     | S     | -     | -     | S      | S      | -     |
| Dinette with Computer Workstation on Passenger Side                        | -     | -     | O     | O     | -      | -      | O     |
| Dinette with Computer Workstation on Driver Side                           | O     | O     | -     | -     | O      | O      | -     |
| Ultraleather U-shaped Dinette (Non-sleeper) on Passenger Side              | -     | -     | O     | O     | -      | -      | O     |
| Ultraleather U-shaped Dinette (Non-sleeper) on Driver Side                 | -     | O     | -     | -     | O      | O      | -     |
| Dinette Bar with Lift TV <sup>7</sup>                                      | O     | -     | O     | -     | -      | -      | -     |
| Ultraleather DE Sofa/Bed on Passenger Side                                 | -     | -     | -     | -     | S      | S      | -     |
| Ultraleather DE Sofa/Bed on Driver Side                                    | S     | -     | -     | -     | -      | -      | -     |
| Ultraleather DE Sofa/Bed and Lift TV on Passenger Side                     | -     | S     | -     | S     | -      | -      | S     |
| Ultraleather Recliner and Lift TV on Passenger Side                        | -     | O     | -     | O     | -      | -      | -     |
| Ultraleather Air Coil Sofa on Passenger Side <sup>8</sup>                  | -     | -     | -     | -     | O      | O      | -     |
| Ultraleather Air Coil Sofa on Driver Side <sup>8</sup>                     | -     | S     | -     | S     | S      | S      | S     |
| Ultraleather Recliner with Angled TV Cabinet on Driver Side                | -     | -     | -     | -     | O      | O      | -     |
| Ultraleather Air Coil Sofa and Lift TV on Passenger Side                   | S     | -     | -     | O     | -      | -      | O     |
| Ultraleather Air Coil Sofa/Bed and Lift TV on Driver Side                  | -     | -     | -     | -     | O      | O      | -     |
| Ultraleather Air Coil Sofa and Ultraleather Recliner on Driver Side        | -     | -     | S     | -     | -      | -      | -     |
| Theatre Seating on Driver Side   | O     | O     | -     | O     | -      | -      | O     |
| Theatre Seating on Passenger Side  | -     | -     | -     | -     | O      | O      | -     |
| Two Ultraleather Recliners with Center Cabinet on Driver Side              | -     | -     | -     | -     | -      | -      | O     |
| Two Ultraleather Recliners on Driver Side                                  | -     | -     | -     | -     | -      | O      | -     |
| Ultraleather L-shaped Sofa on Driver Side                                  | -     | -     | -     | -     | -      | -      | O     |
| Ultraleather L-shaped Sofa and Ultraleather Recliner on Driver Side        | -     | -     | O     | -     | -      | -      | -     |
| Ultraleather Super Sofa on Driver Side                                     | -     | -     | O     | -     | -      | -      | -     |
| Theatre Seating with One Ultraleather Recliner on Driver Side              | -     | -     | O     | -     | -      | -      | -     |
| Fireplace with Two Ultraleather Recliners on Driver Side                   | -     | -     | -     | -     | -      | -      | O     |
| Fireplace with Ultraleather Recliner with Angled TV Cabinet on Driver Side | -     | -     | -     | -     | O      | O      | -     |
| Fireplace with Ultraleather Recliner with Lift TV on Passenger Side        | -     | O     | -     | O     | -      | -      | -     |
| Fireplace Below TV   | O     | -     | O     | -     | -      | -      | -     |

<sup>7</sup> Deletes Midsection TV and Overhead Cabinet above Dining Area.

<sup>8</sup> Cannot option Air Coil Sofa on Driver Side and Passenger Side.

Note: Certain variations of furniture combinations will affect sleeping capacity. Certain variations will restrict walkway space.

## BATHROOM

- Medicine Cabinet with Tri-view Vanity Mirror
- Skylight and LED Light in Shower
- Handcrafted Custom Privacy Door
- Solid Surface Vanity Top and Porcelain Bowl



## INTERIOR

- Soft Touch Vinyl Ceiling
- Treated Carpet in Slide-outs
- Handcrafted Cabinet Fascias and Doors with Concealed Hinges
- Sound Bar with Subwoofer
- BluRay Player in Bedroom Connected with Sound Bar
- Solar and Privacy Shades
- LED Lighting
- Power Roof Vents
- Smoke Detector
- Central Vacuum Cleaner with VacPan
- Soft Close Drawers

| INTERIOR OPTIONS      |  | 36 SH | 37 BH | 40 AH | 40 IH | 40 QBH | 40 QKH | 44 OH |
|-----------------------|--|-------|-------|-------|-------|--------|--------|-------|
| Handcrafted Cabinetry | Amber Glazed                             | O     | O     | O     | O     | O      | O      | O     |
|                       | Pure Linen <sup>6</sup>                  | O     | O     | O     | O     | O      | O      | O     |
|                       | Shadow                                   | O     | O     | O     | O     | O      | O      | O     |
| Fabric Suites         | Artist Taupe III                         | O     | O     | O     | O     | O      | O      | O     |
|                       | Coastal Sand III                         | O     | O     | O     | O     | O      | O      | O     |
|                       | Trend Beige III                          | O     | O     | O     | O     | O      | O      | O     |
| Ultraleathers         | Belgian                                  | O     | O     | O     | O     | O      | O      | O     |
|                       | Cocoon                                   | O     | O     | O     | O     | O      | O      | O     |
| Floor Tiles           | Vicinity (Matte Finish)                  | S     | S     | S     | S     | S      | S      | S     |
|                       | Bianco Navaro (Glossy Finish)            | O     | O     | O     | O     | O      | O      | O     |
|                       | Gold Heat <sup>8</sup> Heated Tile Floor | O     | O     | O     | O     | O      | O      | O     |
| Stacked Washer/Dryer  | O  | O     | O     | O     | O     | O      | O      |       |

<sup>6</sup> Requires Luster Sheen.

## DRIVER'S COMPARTMENT

- 18" Smart Wheel Steering Wheel
- Digital Dash Cluster
- Adjustable Accelerator & Brake Pedals
- Ultraleather Power Driver and Passenger Seats with Integrated Seatbelt Brackets
- Ultraleather Power Passenger Seat with Footrest
- Contemporary Wraparound Dash
- Courtesy Drawer in Step Well
- Dual Dash Fans
- One Drawer in Dash
- Dual 12 V Dash Receptacle
- USB Dash Receptacle
- Power Solar & Privacy Windshield Shade
- Driver/Passenger Side Window Solar & Privacy Shades
- Color Rear Vision Monitor System with Side-view Cameras Activated by Turn Signals
- Single CD Player & AM/FM Stereo
- Satellite-ready Radio Includes Receiver & Antenna (requires subscription)
- Fire Extinguisher
- Front Overhead Flat-panel TV
- Solid Non-opening Window on Passenger Side
- Courtesy Light in Step Well
- Power Step Well Cover

| DRIVER'S COMPARTMENT OPTIONS        |  | 36 SH | 37 BH | 40 AH | 40 IH | 40 QBH | 40 QKH | 44 OH |
|-------------------------------------|--|-------|-------|-------|-------|--------|--------|-------|
| In-dash Navigation System           |  | O     | O     | O     | O     | O      | O      | O     |
| Mobileye Collision Avoidance System |  | O     | O     | O     | O     | O      | O      | O     |
| Blind Spot Monitoring System        |  | O     | O     | O     | O     | O      | O      | O     |
| Front Overhead Bunk                 |  | O     | O     | O     | O     | O      | O      | O     |

## KITCHEN

- Solid Surface Countertop with Stainless Steel Sink
- Solid Surface Sink Covers
- Expand-an-island
- Single Lever Sink Faucet with Sprayer
- Stainless Steel Microwave/Convection Oven
- Tile Galley Backsplash
- Stainless Steel Residential Refrigerator
- Panoramic Galley Window
- Cooktop with Convection Microwave

| KITCHEN OPTIONS |  | 36 SH | 37 BH | 40 AH | 40 IH | 40 QBH | 40 QKH | 44 OH |
|-----------------|--|-------|-------|-------|-------|--------|--------|-------|
| Dishwasher      |  | O     | O     | O     | O     | O      | O      | O     |

## BEDROOM

- Bed Comforter with Throw Pillows
- Under Bed Storage
- Memory Foam Queen Mattress
- Ceiling Fan
- Flat-panel TV
- Carbon Monoxide Detector
- LPG Leak Detector
- Chest of Drawers with Laundry Hamper
- Wardrobe with Automatic Light

| BEDROOM OPTIONS                                 |  | 36 SH | 37 BH | 40 AH | 40 IH | 40 QBH | 40 QKH | 44 OH |
|---|--|-------|-------|-------|-------|--------|--------|-------|
| Bunk Beds (30" x 72") with Convertible Wardrobe |  | —     | —     | —     | —     | —      | S      | —     |
| Sleep Number Mattress—Queen (60" x 80")         |  | O     | O     | O     | O     | O      | O      | O     |
| Sleep Number Mattress—King (72" x 80")          |  | O     | O     | O     | O     | O      | O      | O     |
| Memory Foam King Mattress (72" x 80")           |  | O     | O     | O     | O     | O      | O      | O     |
| Safe  |  | O     | O     | O     | O     | O      | O      | O     |
| Egress Rear Exit                                |  | O     | O     | O     | O     | O      | O      | O     |

## LIVING AREA/DINETTE

|  | 36 SH | 37 BH | 40 AH | 40 IH | 40 QBH | 40 QKH | 44 OH |
|--|-------|-------|-------|-------|--------|--------|-------|
| Ultraleather Booth Dinette/Sleeper on Passenger Side                       | —     | —     | S     | S     | —      | —      | S     |
| Ultraleather Booth Dinette/Sleeper on Driver Side                          | S     | S     | —     | —     | S      | S      | —     |
| Dinette with Computer Workstation on Passenger Side                        | —     | —     | O     | O     | —      | —      | O     |
| Dinette with Computer Workstation on Driver Side                           | O     | O     | —     | —     | O      | O      | —     |
| Ultraleather U-shaped Dinette (Non-sleeper) on Passenger Side              | —     | —     | O     | O     | —      | —      | O     |
| Ultraleather U-shaped Dinette (Non-sleeper) on Driver Side                 | —     | O     | —     | —     | O      | O      | —     |
| Dinette Bar with Lift TV <sup>7</sup>                                      | O     | —     | O     | —     | —      | —      | —     |
| Ultraleather DE Sofa/Bed on Passenger Side                                 | —     | —     | —     | —     | S      | S      | —     |
| Ultraleather DE Sofa/Bed on Driver Side                                    | S     | —     | —     | —     | —      | —      | —     |
| Ultraleather DE Sofa/Bed and Lift TV on Passenger Side                     | —     | S     | —     | S     | —      | —      | S     |
| Ultraleather Recliner and Lift TV on Passenger Side                        | —     | O     | —     | O     | —      | —      | —     |
| Ultraleather Air Coil Sofa on Passenger Side <sup>8</sup>                  | —     | —     | —     | —     | O      | O      | —     |
| Ultraleather Air Coil Sofa on Driver Side <sup>8</sup>                     | —     | S     | —     | S     | S      | S      | S     |
| Ultraleather Recliner with Angled TV Cabinet on Driver Side                | —     | —     | —     | —     | O      | O      | —     |
| Ultraleather Air Coil Sofa and Lift TV on Passenger Side                   | S     | —     | —     | O     | —      | —      | O     |
| Ultraleather Air Coil Sofa/Bed and Lift TV on Driver Side                  | —     | —     | —     | —     | O      | O      | —     |
| Ultraleather Air Coil Sofa and Ultraleather Recliner on Driver Side        | —     | —     | S     | —     | —      | —      | —     |
| Theatre Seating on Driver Side   | O     | O     | —     | O     | —      | —      | O     |
| Theatre Seating on Passenger Side  | —     | —     | —     | —     | O      | O      | —     |
| Two Ultraleather Recliners with Center Cabinet on Driver Side              | —     | —     | —     | —     | —      | —      | O     |
| Two Ultraleather Recliners on Driver Side                                  | —     | —     | —     | —     | —      | O      | —     |
| Ultraleather L-shaped Sofa on Driver Side                                  | —     | —     | —     | —     | —      | —      | O     |
| Ultraleather L-shaped Sofa and Ultraleather Recliner on Driver Side        | —     | —     | O     | —     | —      | —      | —     |
| Ultraleather Super Sofa on Driver Side                                     | —     | —     | O     | —     | —      | —      | —     |
| Theatre Seating with One Ultraleather Recliner on Driver Side              | —     | —     | O     | —     | —      | —      | —     |
| Fireplace with Two Ultraleather Recliners on Driver Side                   | —     | —     | —     | —     | —      | —      | O     |
| Fireplace with Ultraleather Recliner with Angled TV Cabinet on Driver Side | —     | —     | —     | —     | O      | O      | —     |
| Fireplace with Ultraleather Recliner with Lift TV on Passenger Side        | —     | O     | —     | O     | —      | —      | —     |
| Fireplace Below TV   | O     | —     | O     | —     | —      | —      | —     |

<sup>7</sup> Deletes Midsection TV and Overhead Cabinet above Dining Area.

<sup>8</sup> Cannot option Air Coil Sofa on Driver Side and Passenger Side.

Note: Certain variations of furniture combinations will affect sleeping capacity. Certain variations will restrict walkway space.

## BATHROOM

- Medicine Cabinet with Tri-view Vanity Mirror
- Skylight and LED Light in Shower
- Handcrafted Custom Privacy Door
- Solid Surface Vanity Top and Porcelain Bowl



1

YEAR OR 12,000 MILES  
LIMITED WARRANTY

5

YEARS OR 50,000 MILES  
DELAMINATION  
LIMITED WARRANTY

10

YEARS OR 50,000 MILES  
CONSTRUCTION  
LIMITED WARRANTY


1

YEAR COACH  
ROADSIDE SERVICE

∞

ONGOING  
CUSTOMER SUPPORT

FOR PARTS & SERVICE CALL 256.356.0261 OR VISIT [TIFFINMOTORHOMES.COM](http://TIFFINMOTORHOMES.COM)

105 2ND ST NW RED BAY, AL 35582  



**TIFFIN**

MOTORHOMES



1

YEAR OR 12,000 MILES  
LIMITED WARRANTY

5

YEARS OR 50,000 MILES  
DELAMINATION  
LIMITED WARRANTY

10

YEARS OR 50,000 MILES  
CONSTRUCTION  
LIMITED WARRANTY

1

YEAR COACH  
ROADSIDE SERVICE

∞

ONGOING  
CUSTOMER SUPPORT

FOR PARTS & SERVICE CALL 256.356.0261 OR VISIT [TIFFINMOTORHOMES.COM](http://TIFFINMOTORHOMES.COM)

105 2ND ST NW RED BAY, AL 35582  



**TIFFIN**

MOTORHOMES