

The more, the merrier.
For less.



SUNSTAR

QUALITY INNOVATION SERVICE

WINNEBAGO

The more, the merrier.
For less.



SUNSTAR

QUALITY INNOVATION SERVICE

WINNEBAGO



On the Cover: Cafe Mist Deluxe Graphics
Interior: 32M Lennon with Charcoal with Driftwood 2 Cabinetry



The Sunstar galley is fully equipped, with two-door refrigerator/freezer, double-bowl stainless sink, three-burner range top and oven, and abundant counter, cabinet and drawer space.



The comfortable dinette features a hi-lo table, and provides additional storage space for bedding, gear, or other items.



Transform your movie or game watching: opt for the available theater seating and relax with individually operated recliners, footrests and a center console for drinks and snacks.

Adventure, Say Hello to Comfort and Value

Long a standout for RVers who want a well-built motorhome that's comfortable and user-friendly, the Winnebago® Sunstar® returns with an all-new floorplan, enhanced amenities, and Winnebago's legendary build quality.

The Sunstar is available in five floorplans, each featuring one or more slideouts for added living space. The new 32M double-slideout floorplan features a walkaround king bed with dual nightstands in the rear bedroom, plus a dinette and sofa/bed or optional reclining theater seats.

The Ford® F53 chassis features a new 7.3L PFI V8 engine that provides ample towing power, as well as additional safety and convenience features like Hill-Start Assist and Electronic Stability Control, available only on 2021 Winnebago Class A gas motorhomes.



On the Cover: Cafe Mist Deluxe Graphics
Interior: 32M Lennon with Charcoal with Driftwood 2 Cabinetry



The Sunstar galley is fully equipped, with two-door refrigerator/freezer, double-bowl stainless sink, three-burner range top and oven, and abundant counter, cabinet and drawer space.



The comfortable dinette features a hi-lo table, and provides additional storage space for bedding, gear, or other items.



Transform your movie or game watching: opt for the available theater seating and relax with individually operated recliners, footrests and a center console for drinks and snacks.

Adventure, Say Hello to Comfort and Value

Long a standout for RVers who want a well-built motorhome that's comfortable and user-friendly, the Winnebago® Sunstar® returns with an all-new floorplan, enhanced amenities, and Winnebago's legendary build quality.

The Sunstar is available in five floorplans, each featuring one or more slideouts for added living space. The new 32M double-slideout floorplan features a walkaround king bed with dual nightstands in the rear bedroom, plus a dinette and sofa/bed or optional reclining theater seats.

The Ford® F53 chassis features a new 7.3L PFI V8 engine that provides ample towing power, as well as additional safety and convenience features like Hill-Start Assist and Electronic Stability Control, available only on 2021 Winnebago Class A gas motorhomes.



The Sunstar's bright and roomy lounge area is a comfortable gathering place, whether the agenda is planning the day's activities, playing games, dining, working or just relaxing. Swivel cab seats and a removable pedestal table provide extra seating, and the available theater seating – with individually operated recliners, footrests and center console – is terrific for taking in a show on the widescreen LCD HDTV. The dinette features a hi-lo table with extra storage, and USB chargers in the dining area keep devices charged and ready to go.



Lounge



Cab seats



Theater seating



LCD HDTV



The Sunstar's bright and roomy lounge area is a comfortable gathering place, whether the agenda is planning the day's activities, playing games, dining, working or just relaxing. Swivel cab seats and a removable pedestal table provide extra seating, and the available theater seating – with individually operated recliners, footrests and center console – is terrific for taking in a show on the widescreen LCD HDTV. The dinette features a hi-lo table with extra storage, and USB chargers in the dining area keep devices charged and ready to go.



Lounge



Cab seats



Theater seating



LCD HDTV

WINNEBAGO

SUNSTAR / Galley



The attractive Sunstar galley is designed with the cook in mind. The handy pantry and large (10 cu.ft.) two-door compressor-driven refrigerator/freezer hold enough to reduce restocking needs, while the stainless-steel double bowl sink speeds cleanup. Cooking is handled by the recessed three-burner range top, which features a black glass folding cover and sealed burners with piezo ignition, as well as the microwave oven with touch controls. Serious bakers will enjoy the optional three-burner range with oven.



Corian® countertops



12 cu. ft. four-door refrigerator (available on 32M, 35U)



Three-burner range top



Stainless-steel double bowl sink



Kitchen storage



Available convection microwave oven



The attractive Sunstar galley is designed with the cook in mind. The handy pantry and large (10 cu.ft.) two-door compressor-driven refrigerator/freezer hold enough to reduce restocking needs, while the stainless-steel double bowl sink speeds cleanup. Cooking is handled by the recessed three-burner range top, which features a black glass folding cover and sealed burners with piezo ignition, as well as the microwave oven with touch controls. Serious bakers will enjoy the optional three-burner range with oven.



Corian® countertops



12 cu. ft. four-door refrigerator (available on 32M, 35U)



Three-burner range top



Stainless-steel double bowl sink



Kitchen storage



Available convection microwave oven



When night falls, you'll appreciate the peace and quiet of the Sunstar's private rear bedroom. The walkaround king or queen bed features storage below, and the wardrobe and nightstands on either side (which include convenient USB chargers) keep things organized. The available HDTV is perfect for late-night viewing. Up front, the sofa/bed accommodates more sleepers, as does the optional powered StudioLoft™ bed over the cab area, while the bunk beds on the 31B are an extra treat for kids or grandkids.

The well-equipped bath includes a shower with flexible showerhead and textured glass shower door (retractable screen on the 27P), skylight and powered roof ventilator fan, plus a medicine cabinet, and towel bar(s) and/or ring(s).



Wardrobe



Dual nightstands



Bedroom HDTV



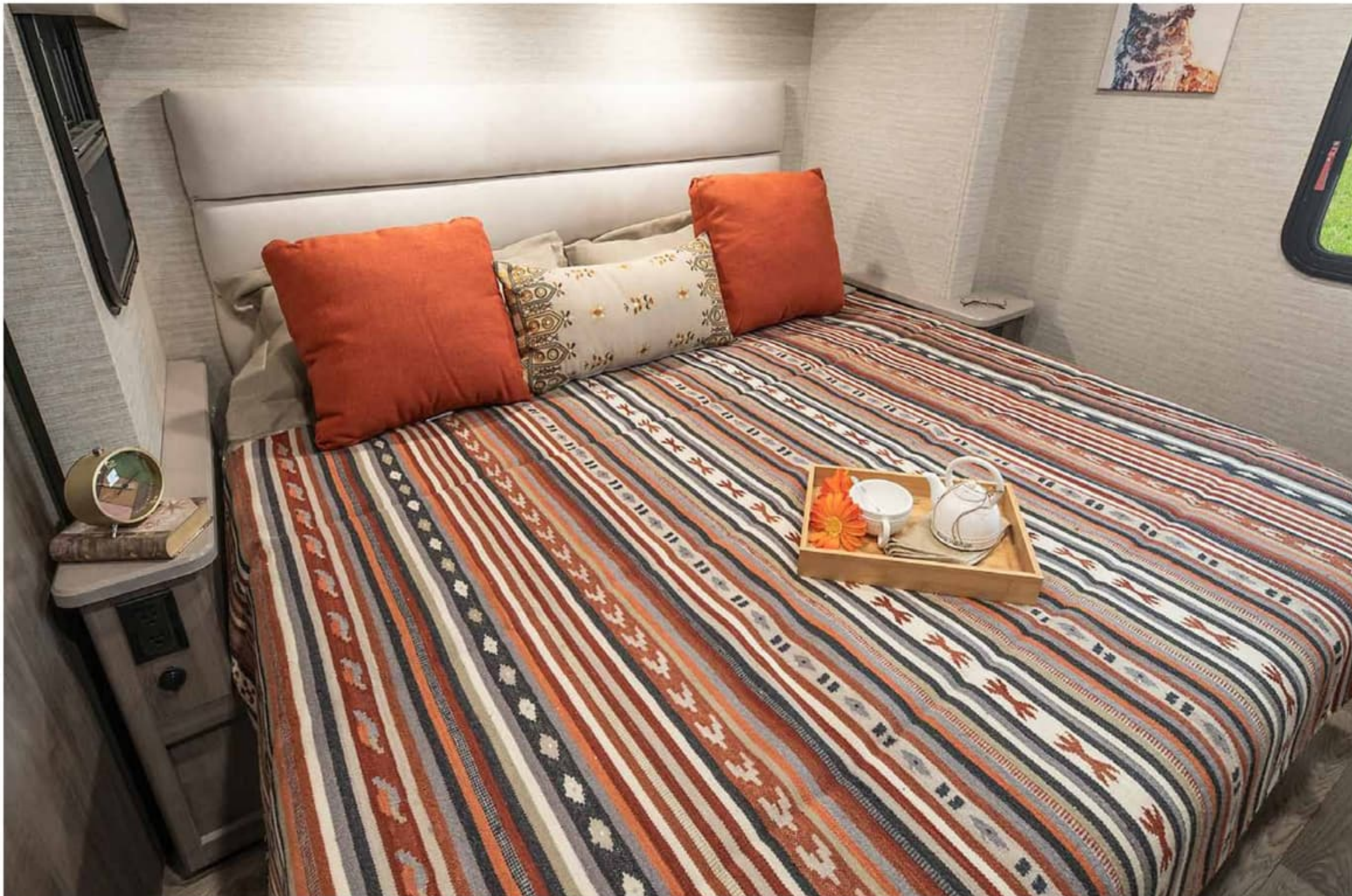
StudioLoft bed



Bathroom



Shower with skylight



When night falls, you'll appreciate the peace and quiet of the Sunstar's private rear bedroom. The walkaround king or queen bed features storage below, and the wardrobe and nightstands on either side (which include convenient USB chargers) keep things organized. The available HDTV is perfect for late-night viewing. Up front, the sofa/bed accommodates more sleepers, as does the optional powered StudioLoft™ bed over the cab area, while the bunk beds on the 31B are an extra treat for kids or grandkids.

The well-equipped bath includes a shower with flexible showerhead and textured glass shower door (retractable screen on the 27P), skylight and powered roof ventilator fan, plus a medicine cabinet, and towel bar(s) and/or ring(s).



Wardrobe



Dual nightstands



Bedroom HDTV



StudioLoft bed



Bathroom



Shower with skylight



The Sunstar is just as comfortable on the road as in camp. The swivel seats slide and recline, and the radio/rearview monitor is now twice as big, with an integrated Sony® 7" touch panel color monitor and color rear camera, and is Bluetooth®, Android Auto™, Apple CarPlay® & Sirius XM®-ready. A removable utility table and dash workstation with USB and 12-volt powerpoints provide plenty of workspace, while the powered MCD blackout roller visor/shade on the front windshield adds privacy in camp at the push of a button.



Dash workstation



Adjustable swivel and reclining cab seats



Steering wheel with tilt/telescoping and speed control



Powered MCD visor/shade



Sony 7" touch panel color monitor

WINNEBAGO
SUNSTAR / Cab



The Sunstar is just as comfortable on the road as in camp. The swivel seats slide and recline, and the radio/rearview monitor is now twice as big, with an integrated Sony® 7" touch panel color monitor and color rear camera, and is Bluetooth®, Android Auto™, Apple CarPlay® & Sirius XM®-ready. A removable utility table and dash workstation with USB and 12-volt powerpoints provide plenty of workspace, while the powered MCD blackout roller visor/shade on the front windshield adds privacy in camp at the push of a button.



Dash workstation



Adjustable swivel and reclining cab seats



Steering wheel with tilt/telescoping and speed control



Powered MCD visor/shade



Sony 7" touch panel color monitor

WINNEBAGO

SUNSTAR

Exterior



The Sunstar is as enjoyable outside as it is inside. Extend the powered patio awning and admire the finish of the premium high-gloss sidewalls, or fire up the entertainment center's HDTV with speakers. The Tailgate Package, available on the 29V and 31B, adds a refrigerator, stainless steel portable grill with quick-connect LP hose, sink/faucet, three-drawer cabinet and more. For your convenience, a USB port lets you charge your devices without going inside, and a master switch inside the coach controls the storage compartment LED lights. And the PetPal leash tie down keeps your best friend close to your home away from home – your Sunstar.



Powered awning



Exterior entertainment center



Tailgate package



Passthrough storage



Wheel

WINNEBAGO

SUNSTAR

Exterior



The Sunstar is as enjoyable outside as it is inside. Extend the powered patio awning and admire the finish of the premium high-gloss sidewalls, or fire up the entertainment center's HDTV with speakers. The Tailgate Package, available on the 29V and 31B, adds a refrigerator, stainless steel portable grill with quick-connect LP hose, sink/faucet, three-drawer cabinet and more. For your convenience, a USB port lets you charge your devices without going inside, and a master switch inside the coach controls the storage compartment LED lights. And the PetPal leash tie down keeps your best friend close to your home away from home – your Sunstar.



Powered awning



Exterior entertainment center



Tailgate package



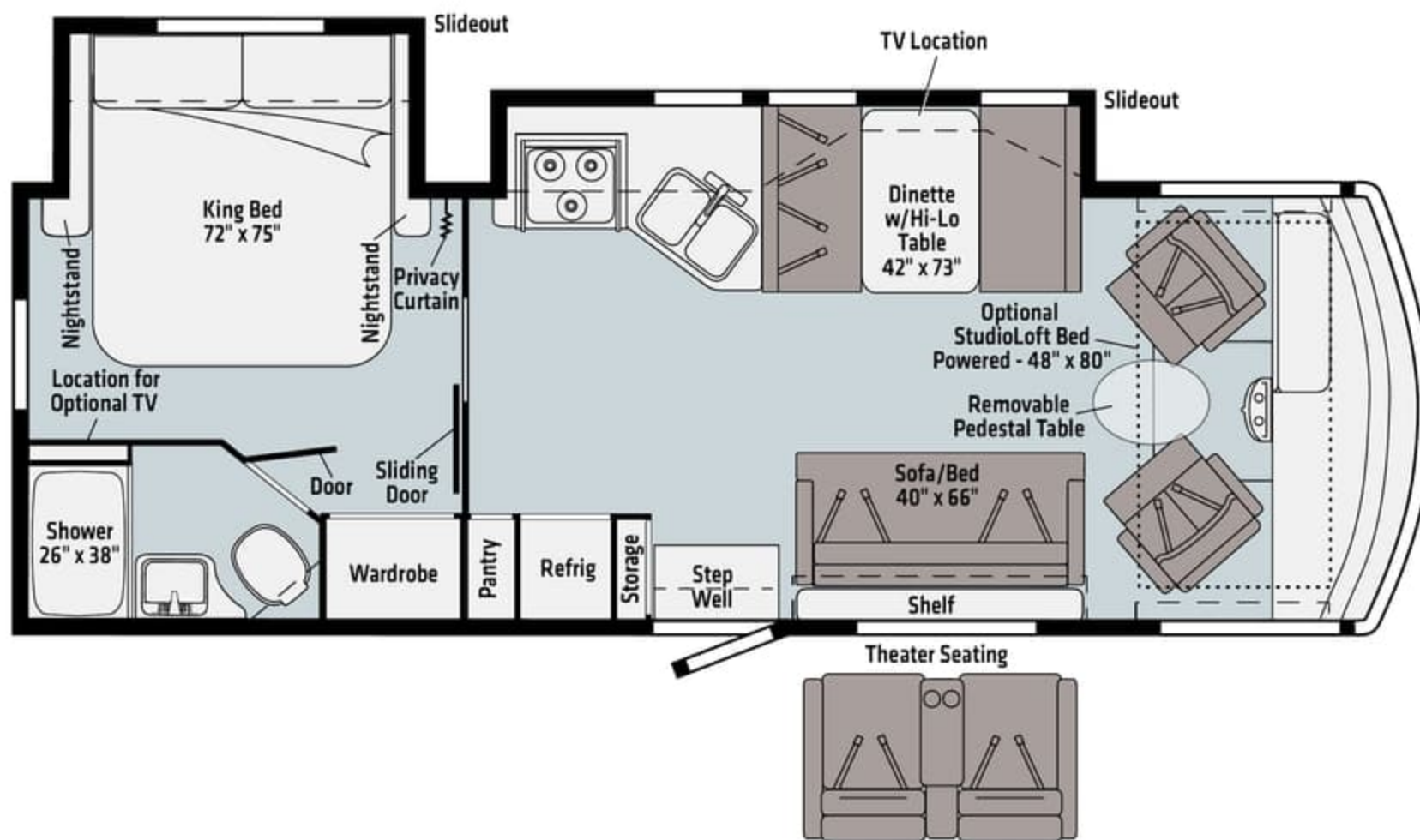
Passthrough storage



Wheel



27P



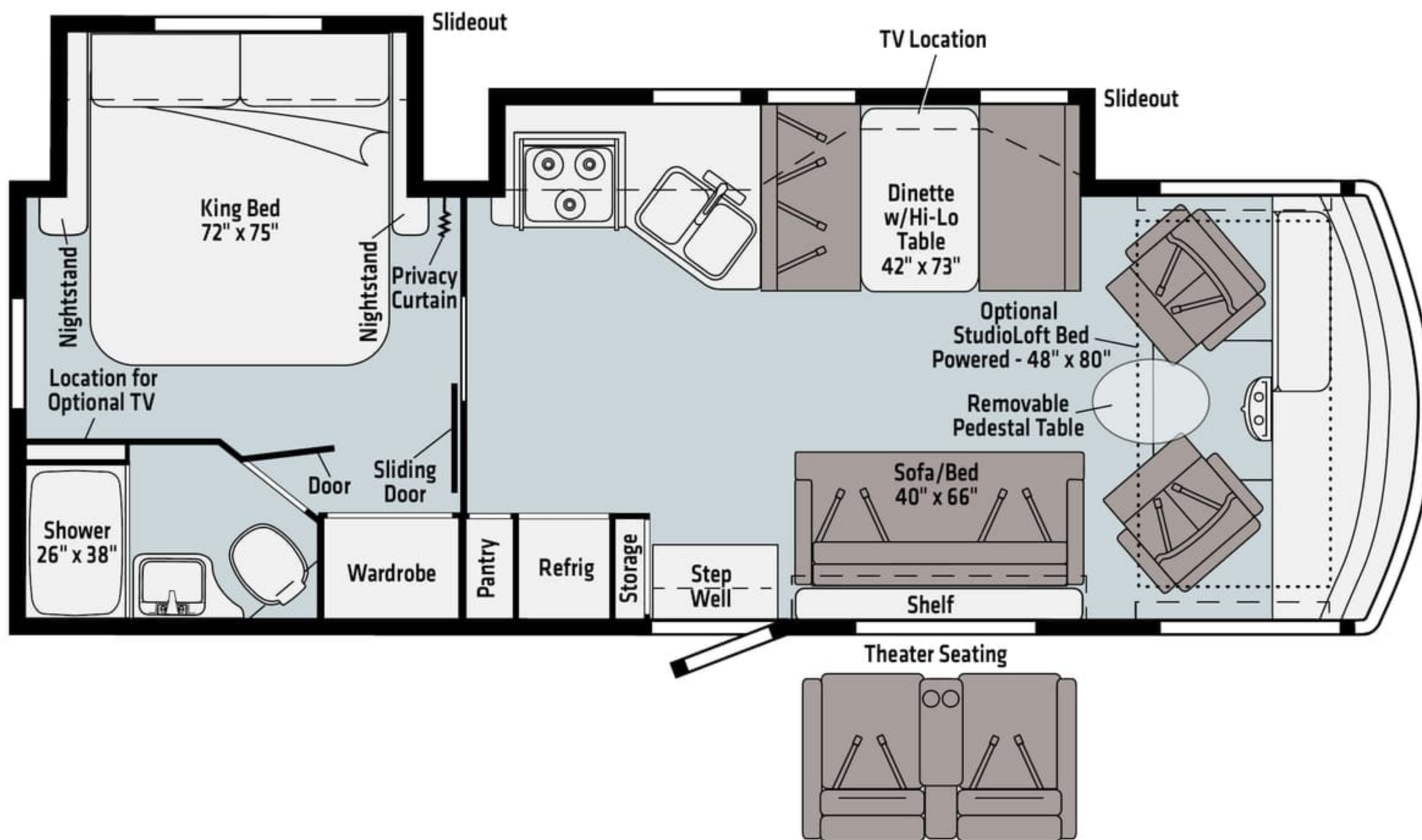
Ultrafabrics
 UF2 Premium
 Leatherette

Residential
 Vinyl Flooring

Dashed lines denote overhead storage areas. Floorplans and specifications are also available online at Winnebago.com



27P



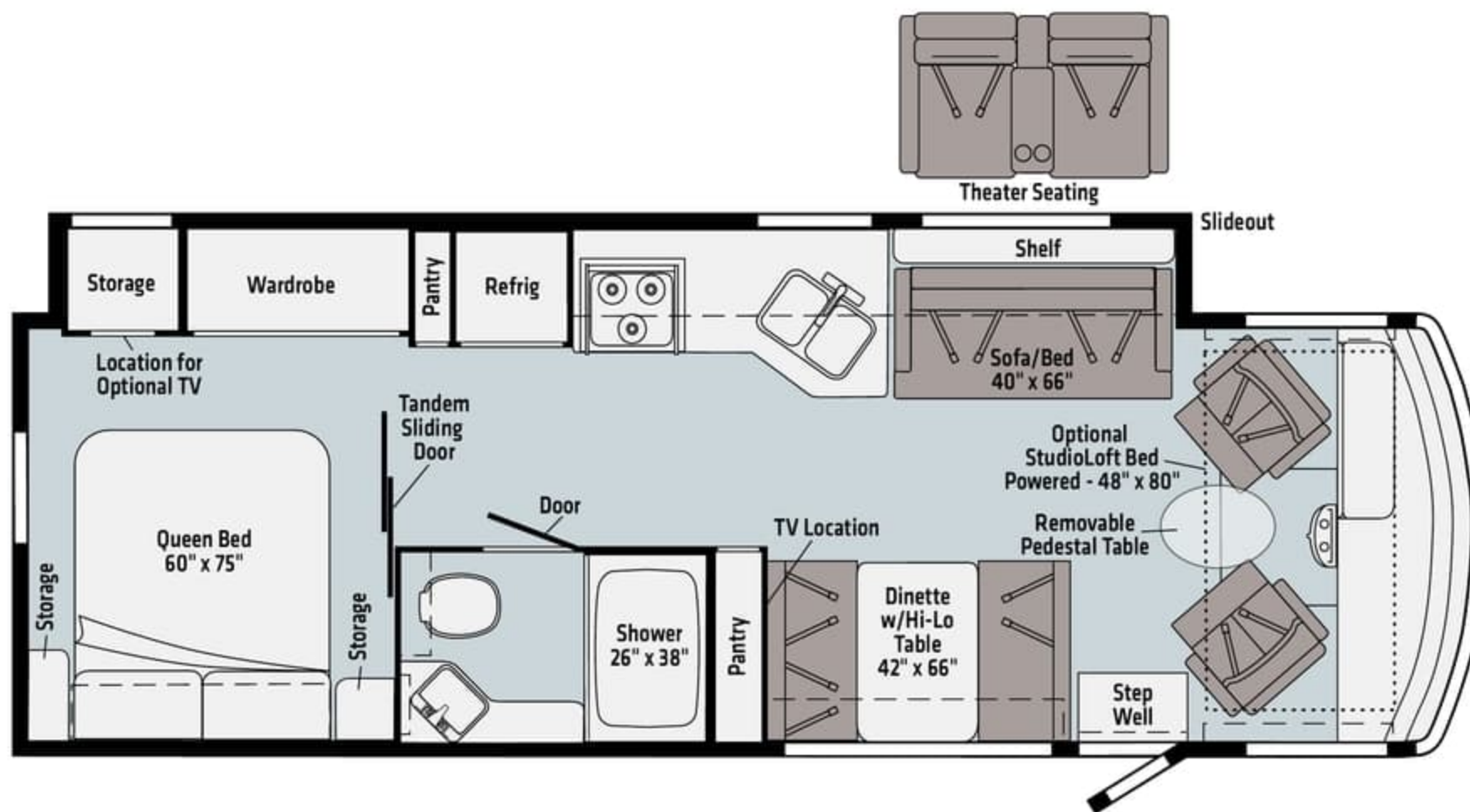
Ultrafabrics
 UF2 Premium
 Leatherette

Residential
 Vinyl Flooring

Dashed lines denote overhead storage areas. Floorplans and specifications are also available online at Winnebago.com



29V

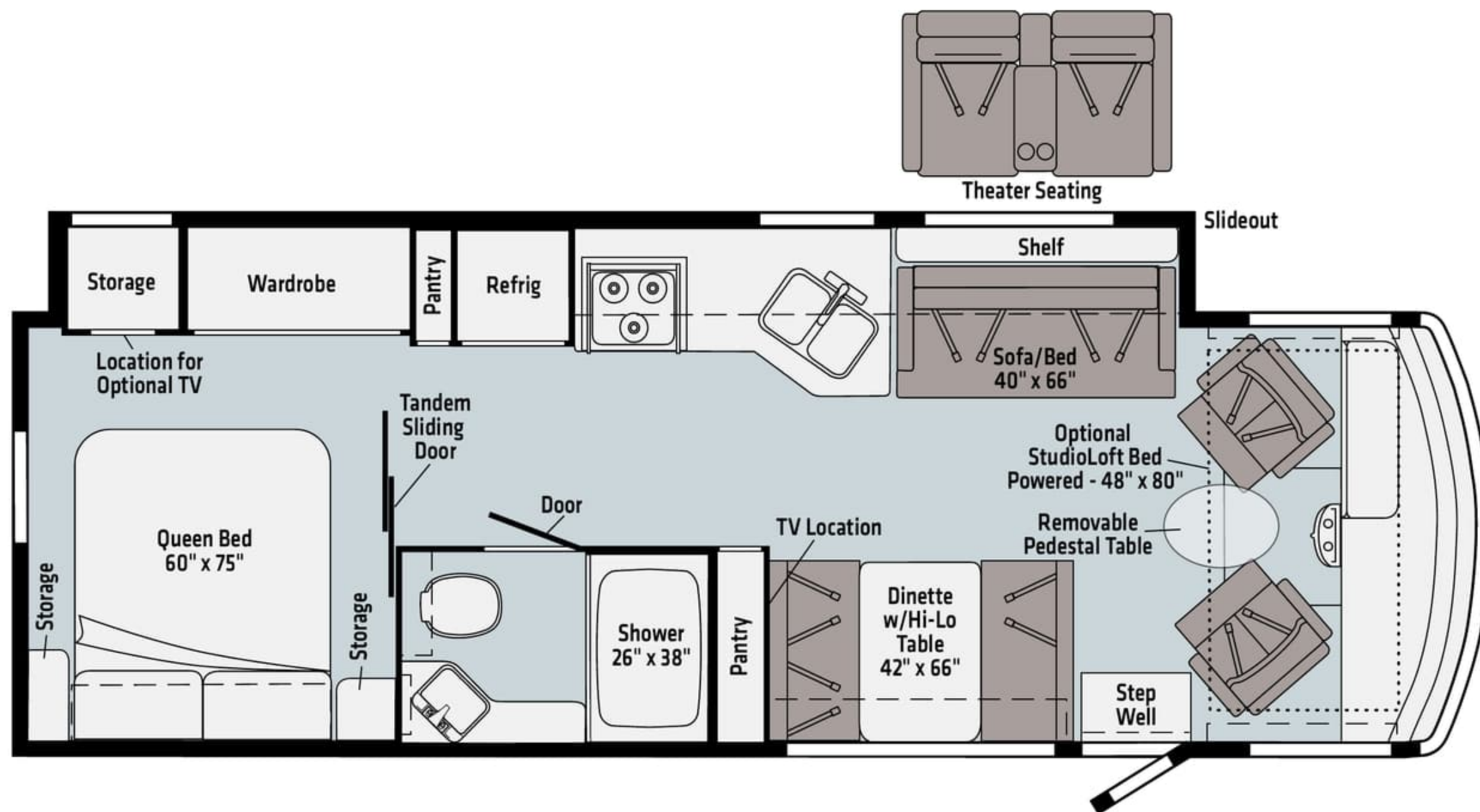


- Ultrafabrics UF2 Premium Leatherette
- Residential Vinyl Flooring

Dashed lines denote overhead storage areas. Floorplans and specifications are also available online at Winnebago.com



29V



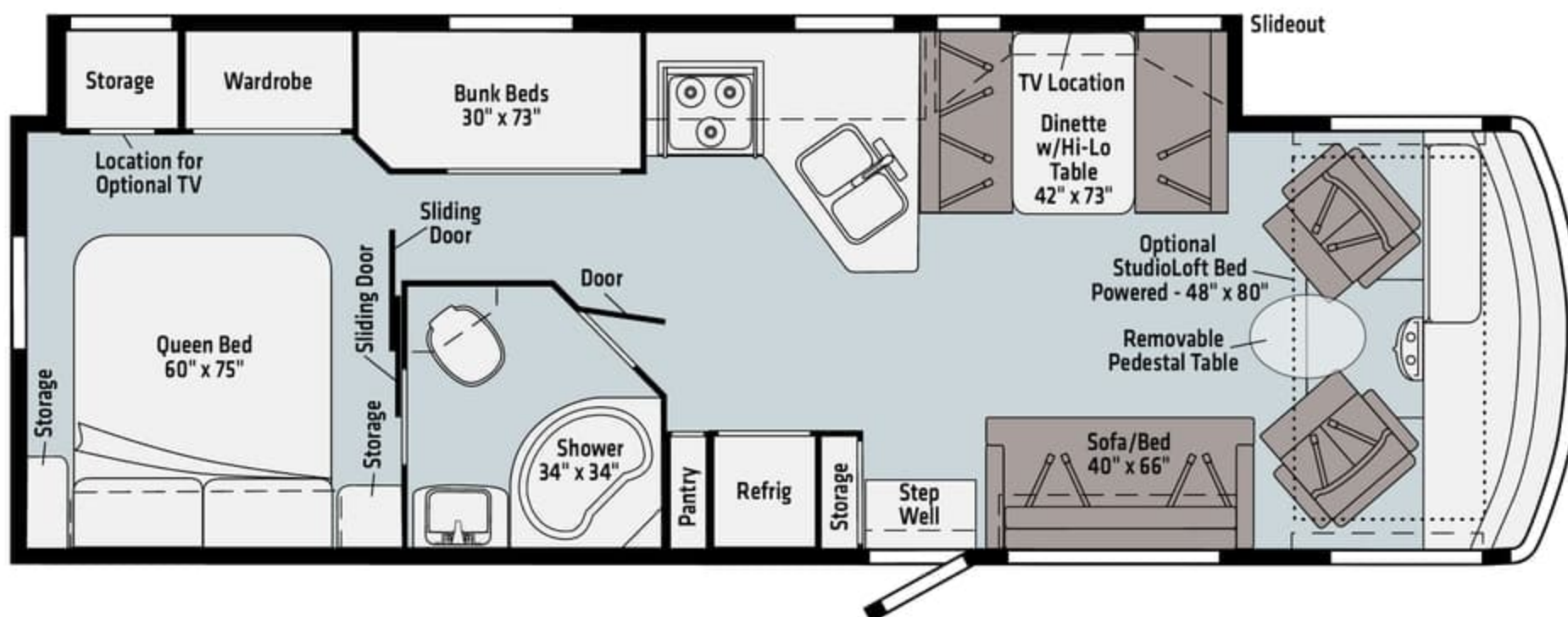
Ultrafabrics
 UF2 Premium
 Leatherette

Residential
 Vinyl Flooring

Dashed lines denote overhead storage areas. Floorplans and specifications are also available online at Winnebago.com



31B



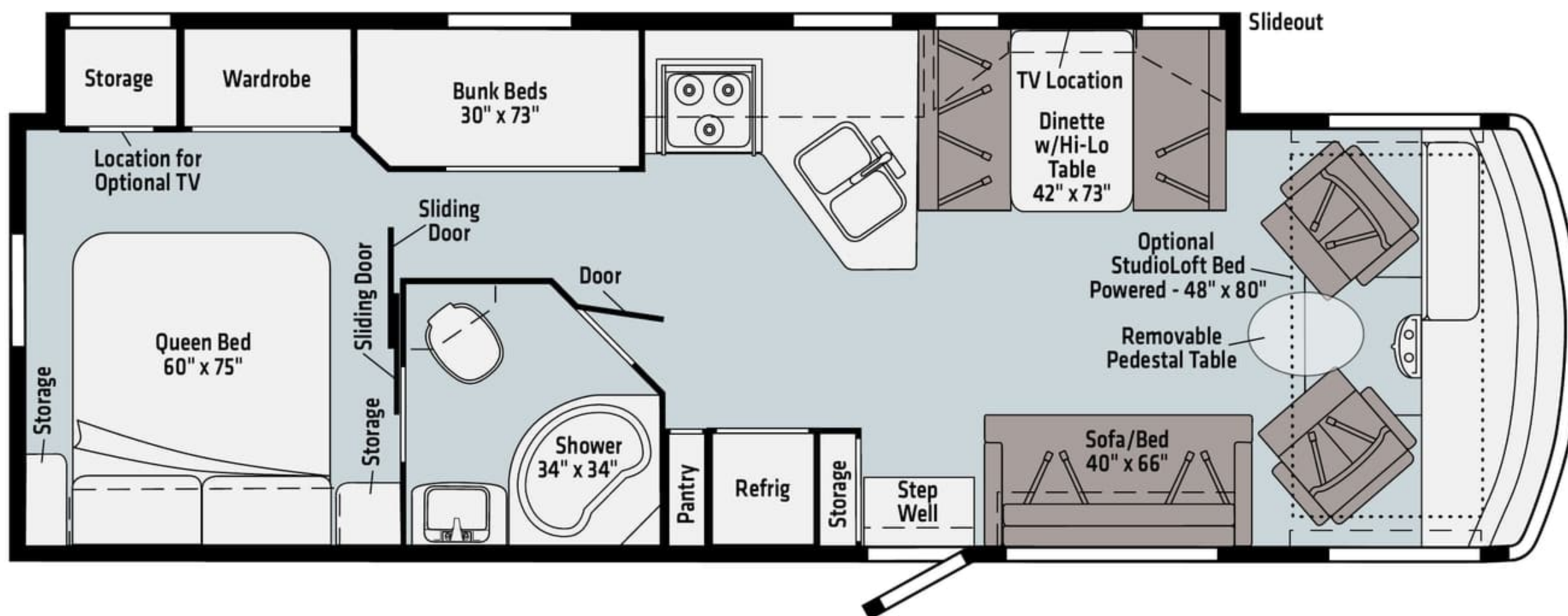
Ultrafabrics
 UF2 Premium
 Leatherette

Residential
 Vinyl Flooring

Dashed lines denote overhead storage areas. Floorplans and specifications are also available online at Winnebago.com



31B



Ultrafabrics
UF2 Premium
Leatherette

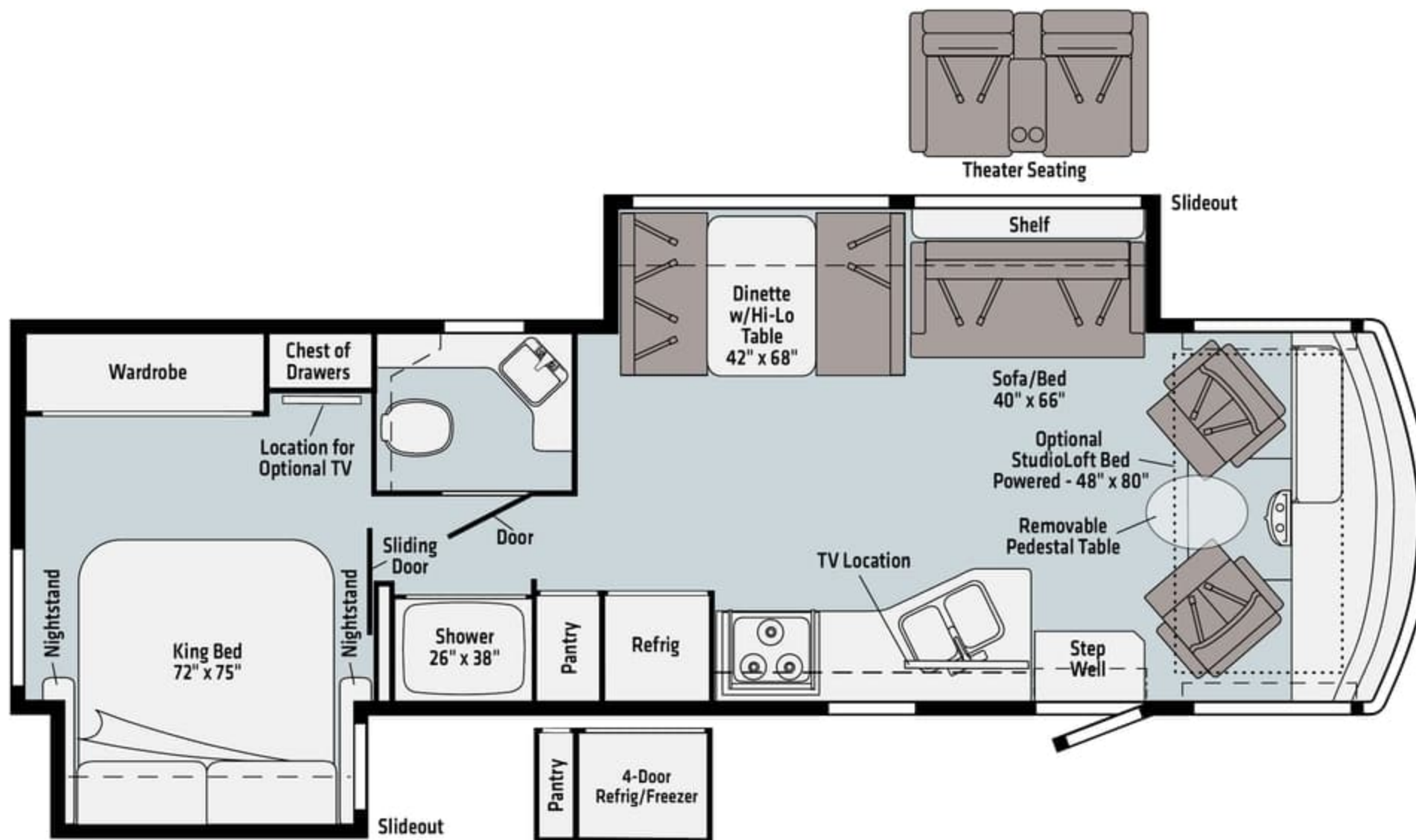
Residential
Vinyl Flooring

Dashed lines denote overhead storage areas. Floorplans and specifications are also available online at Winnebago.com

WINNEBAGO
SUNSTAR / Floorplan



NEW
32M



Ultrafabrics
 UF2 Premium
 Leatherette

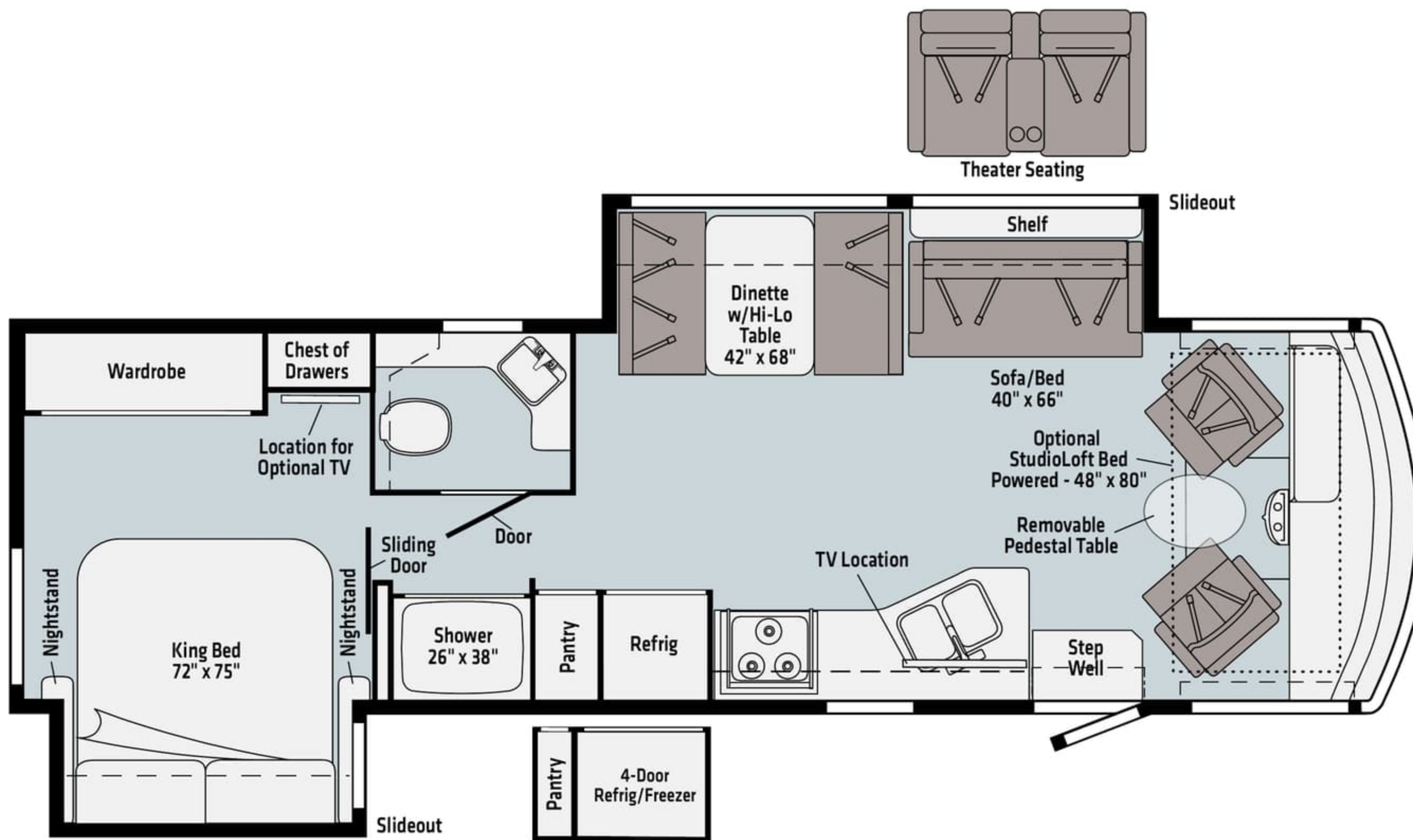
Residential
 Vinyl Flooring

Dashed lines denote overhead storage areas. Floorplans and specifications are also available online at Winnebago.com

WINNEBAGO
SUNSTAR / Floorplan



NEW
32M



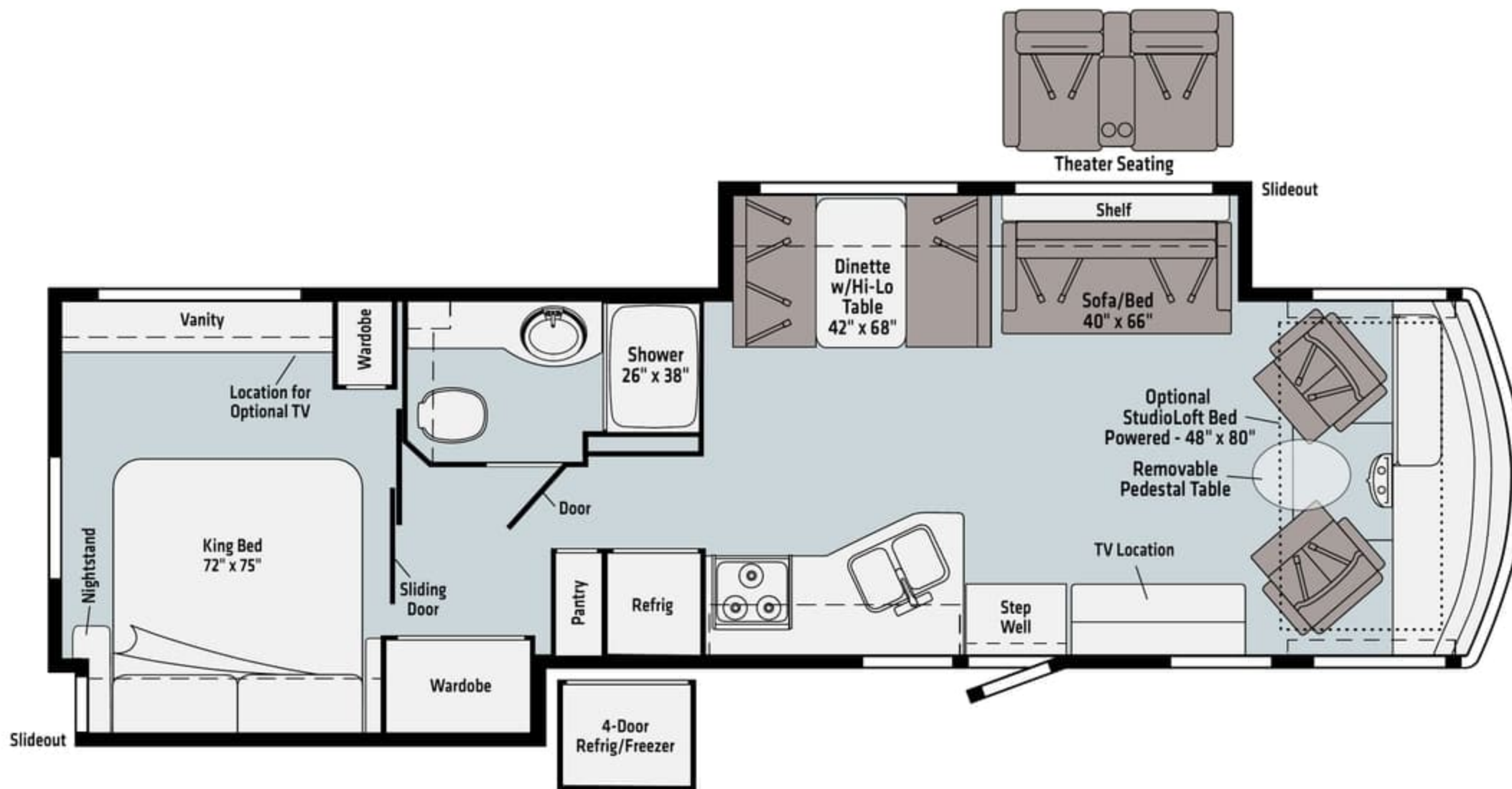
Ultrafabrics
 UF2 Premium
 Leatherette

Residential
 Vinyl Flooring

Dashed lines denote overhead storage areas. Floorplans and specifications are also available online at Winnebago.com



35U

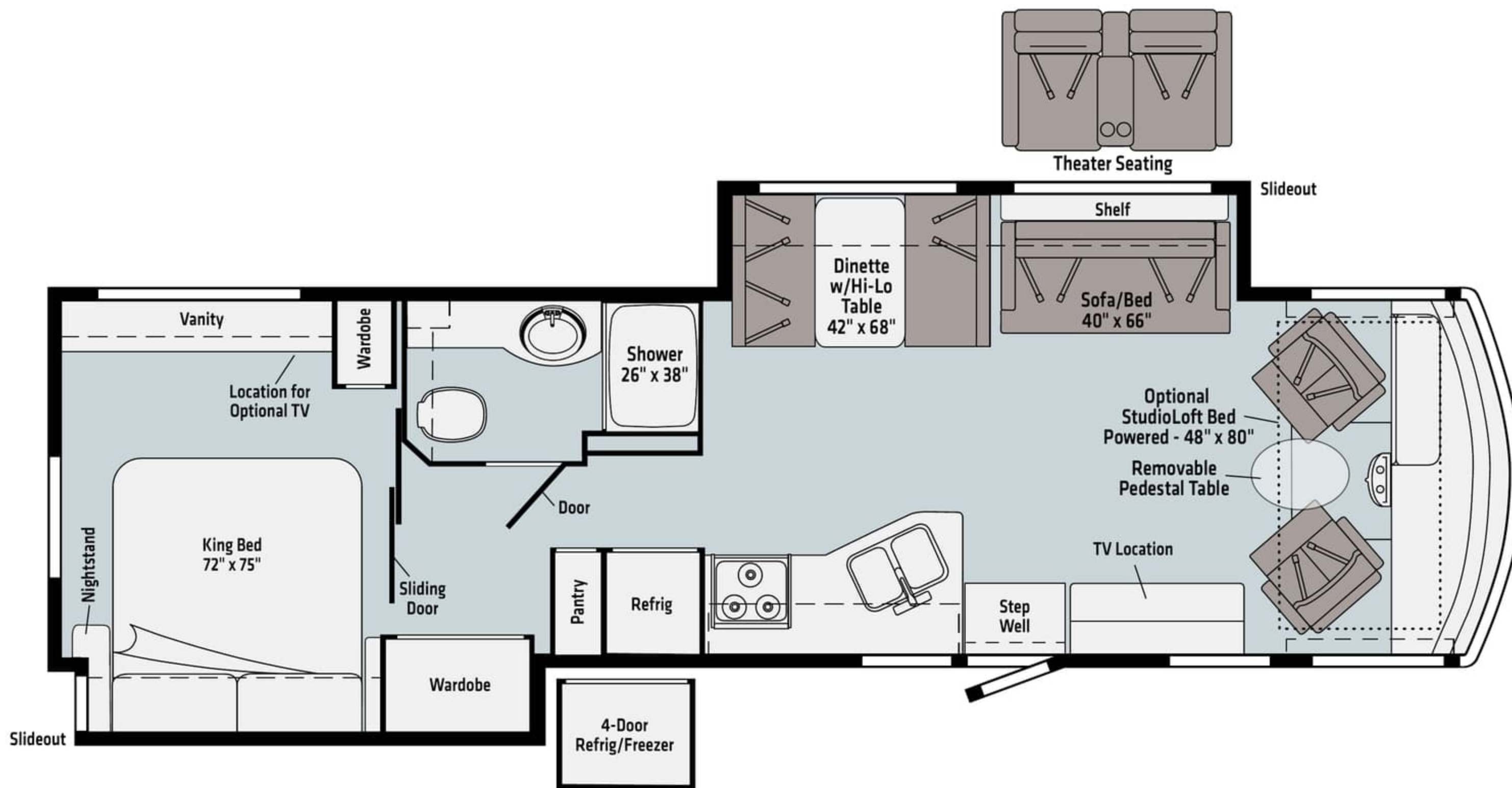


- Ultrafabrics UF2 Premium Leatherette
- Residential Vinyl Flooring

Dashed lines denote overhead storage areas. Floorplans and specifications are also available online at Winnebago.com



35U



Ultrafabrics
 UF2 Premium
 Leatherette

Residential
 Vinyl Flooring

Dashed lines denote overhead storage areas. Floorplans and specifications are also available online at Winnebago.com

WINNEBAGO

SUNSTAR

Exterior



Cafe

DELUXE GRAPHICS



Sea Mist

DELUXE GRAPHICS



Cafe Mist

DELUXE GRAPHICS



Pewter Sea Mist

DELUXE GRAPHICS



Cafe
DELUXE GRAPHICS



Sea Mist
DELUXE GRAPHICS



Cafe Mist
DELUXE GRAPHICS

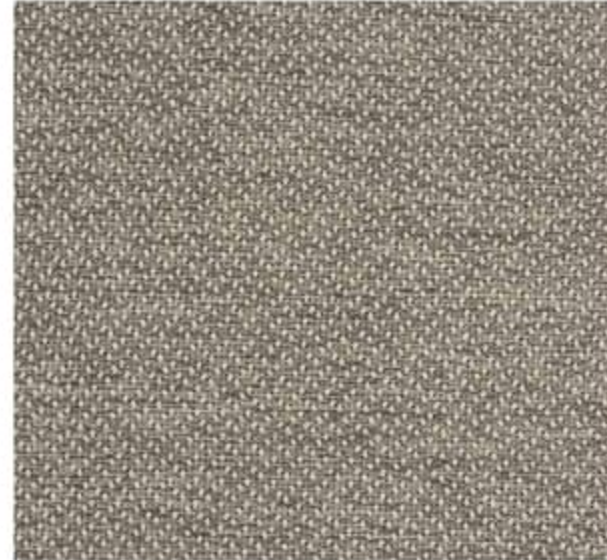


Pewter Sea Mist
DELUXE GRAPHICS

Lennon with Charcoal



Ultrafabrics UF2 Premium Leatherette



Feature Fabric



Wall Board



Bedsread



Countertop



Residential Vinyl Flooring

Wood



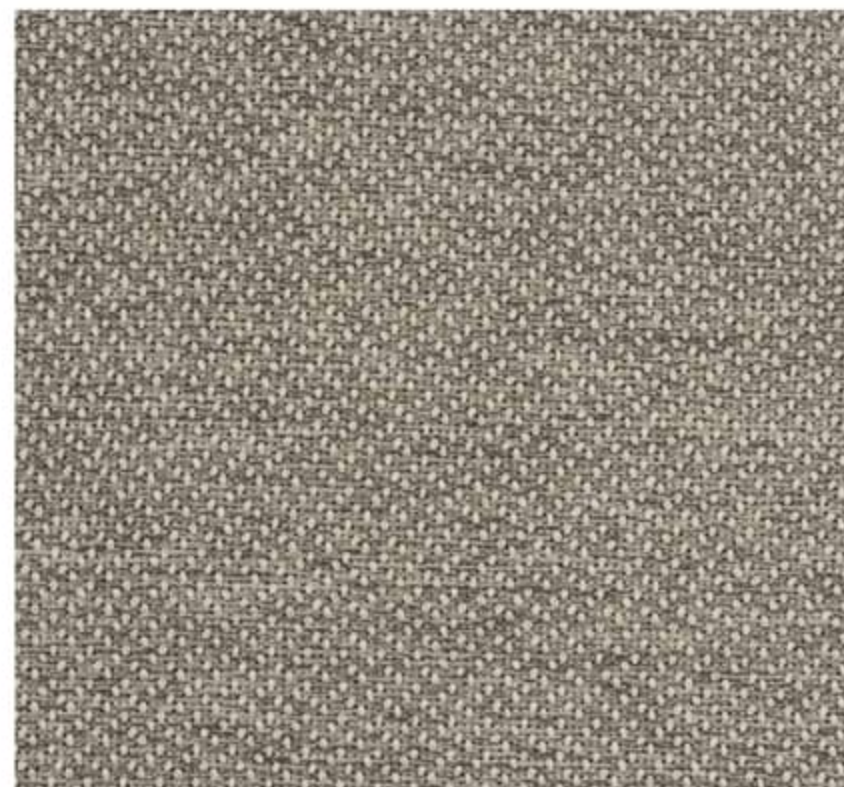
Driftwood 2

Winnebago® reserves the right to change décor materials and specifications without notice or obligation.

Lennon with Charcoal



Ultrafabrics UF2 Premium Leatherette



Feature Fabric



Wall Board



Bedsread



Countertop



Residential Vinyl Flooring

Wood



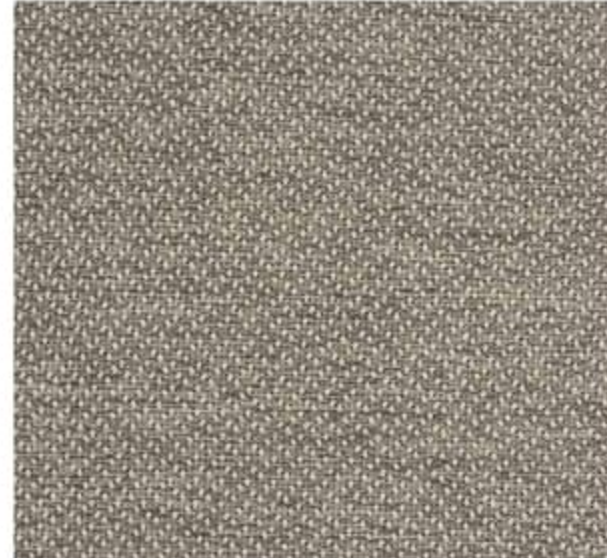
Driftwood 2

Winnebago® reserves the right to change décor materials and specifications without notice or obligation.

Lennon with Medium Gray



Ultrafabrics UF2 Premium Leatherette



Feature Fabric



Wall Board



Bedspread



Countertop



Residential Vinyl Flooring

Wood



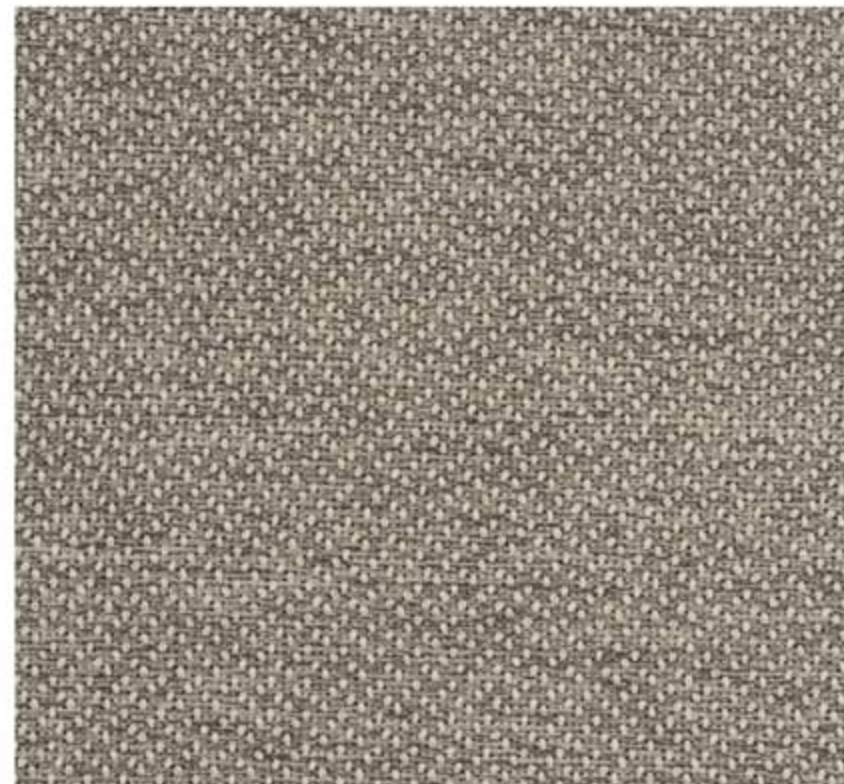
Driftwood 2

Winnebago® reserves the right to change décor materials and specifications without notice or obligation.

Lennon with Medium Gray



Ultrafabrics UF2 Premium Leatherette



Feature Fabric



Wall Board



Bedsread



Countertop



Residential Vinyl Flooring

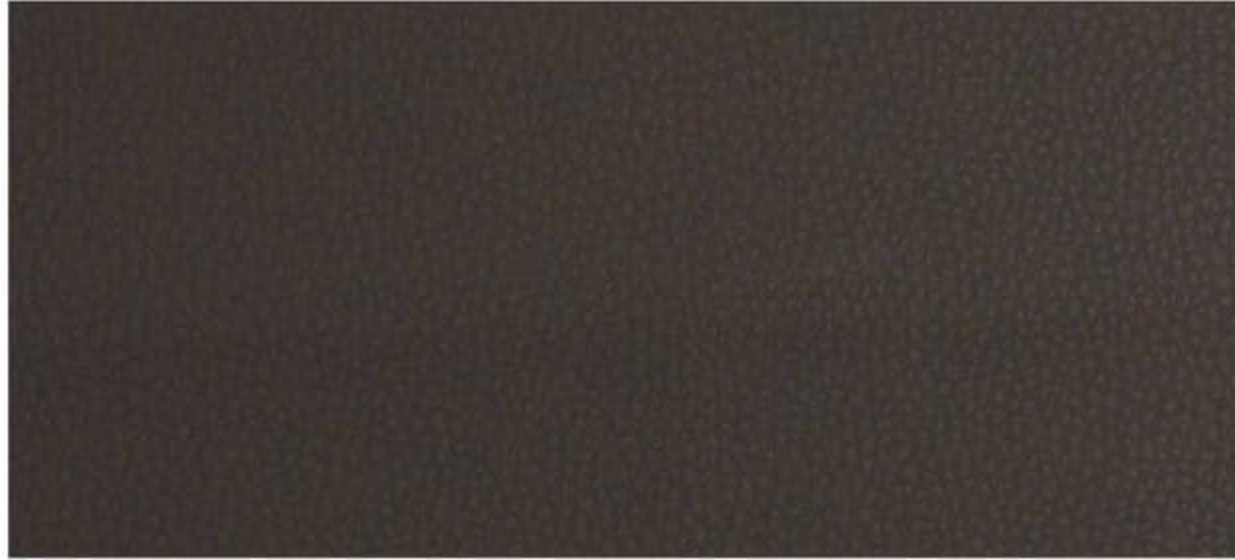
Wood



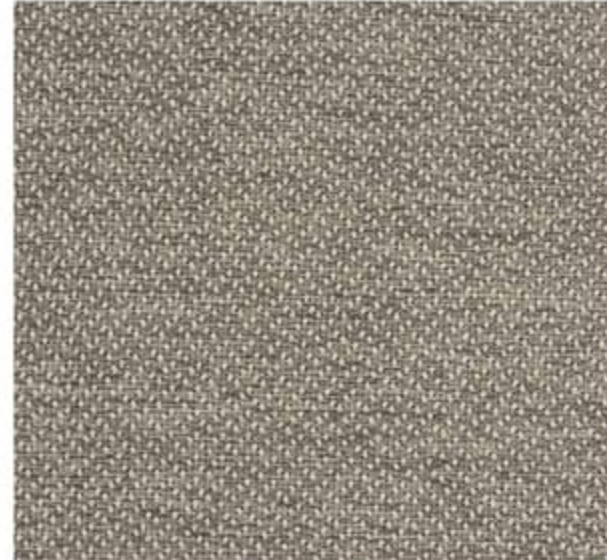
Driftwood 2

Winnebago® reserves the right to change décor materials and specifications without notice or obligation.

Starr with Charcoal



Ultrafabrics UF2 Premium Leatherette



Feature Fabric



Wall Board



Bedspread



Countertop



Residential Vinyl Flooring

Wood



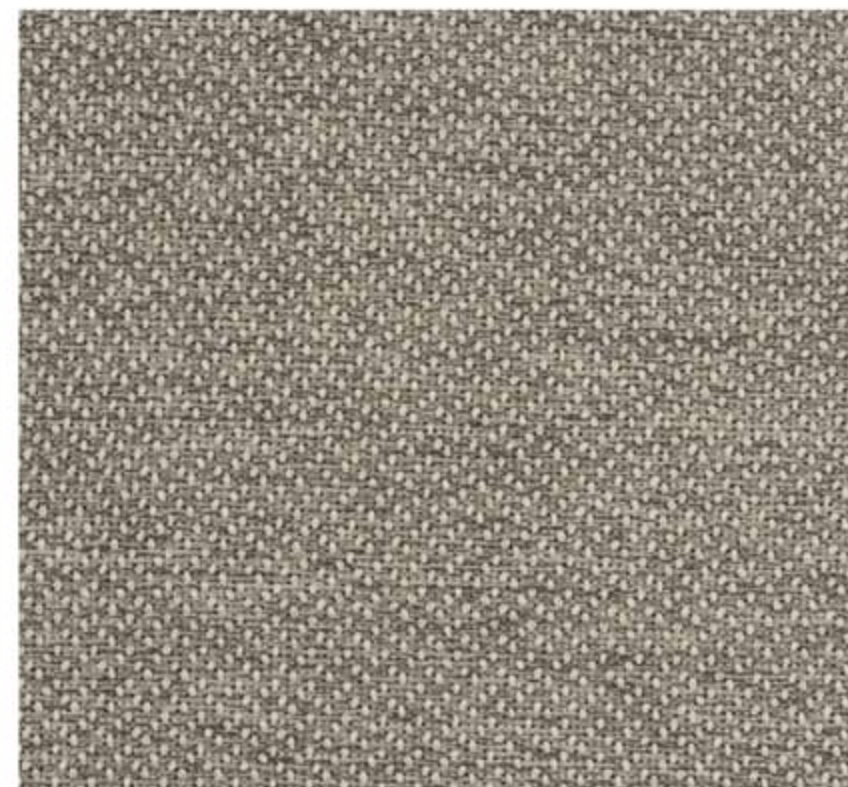
Columbian Walnut

Winnebago® reserves the right to change décor materials and specifications without notice or obligation.

Starr with Charcoal



Ultrafabrics UF2 Premium Leatherette



Feature Fabric



Wall Board



Bedsread



Countertop



Residential Vinyl Flooring

Wood



Columbian Walnut

Winnebago® reserves the right to change décor materials and specifications without notice or obligation.



WEIGHTS & MEASURES	27P	29V	31B	NEW 32M	35U
Length	28'5"	30'	31'2"	31'9"	35'0"
Exterior Height ¹	12'	12'	12'2"	12'1"	12'1"
Exterior Width ²	8'5.5"	8'5.5"	8'5.5"	8'5.5"	8'5.5"
Exterior Storage ³ (cu. ft.)	133	147	139	123	134
Awning Length	19'	17'	19'	17'	16'
Interior Height	6'8"	6'8"	6'8"	6'8"	6'8"
Interior Width	8'0.5"	8'0.5"	8'0.5"	8'0.5"	8'0.5"
Freshwater Tank Capacity ⁴ (gal.)	51	70	70	64	74
Water Heater Capacity (gal.)	6	6	6	6	6
Holding Tank Capacity - Black/Gray ⁴ (gal.)	50/45	40/61	43/59	41/57	41/57
LP Capacity ⁵ (lbs.)	76.14	76.14	76.14	76.14	76.14
Fuel Capacity (gal.)	80	80	80	80	80
GCWR ⁶ (lbs.)	23,000	23,000	23,000	23,000	26,000
GVWR (lbs.)	18,000	18,000	18,000	18,000	22,000
GAWR - Front (lbs.)	7,000	7,000	7,000	7,000	8,000
GAWR - Rear (lbs.)	12,000	12,000	12,000	12,000	15,000
Wheelbase	178"	190"	208"	208"	228"

Ford® F53 Chassis

7.3L PFI V8 engine, TorqShift™ 6-speed automatic transmission w/tow/haul, 210-amp. alternator

Electronic stability control

Hydraulic brakes w/ABS

Trailer hitch⁶ 5,000-lb. drawbar/500-lb. maximum vertical tongue weight

7-pin trailer wiring

Stainless steel wheel liners

Stylized aluminum wheels (35U)

Automatic hydraulic leveling jacks

Rear valve stem extensions

Cab Conveniences

Radio/Rearview Monitor System 7.0" LCD color touch screen, Apple CarPlay®, Android Auto,™ Sirius XM ready, rear color camera, Bluetooth®

Versa driver's seat swivels easily around steering wheel, w/two-position armrest, fixed lumbar support, and multi-adjustable slide/recline

Passenger seat swivels, w/two-position armrests, fixed lumbar support, and multi-adjustable slide/recline

3-point seat belts

Removable utility table

Chassis/house battery radio power switch

Power steering w/tilt and telescoping wheel

Rearview power mirrors w/defrost and power adjust

Powered MCD blackout roller visor/shade (front windshield)

MCD blackout roller shade (driver and passenger windows)

Large panoramic windshield

Driver/passenger snap on vinyl closeout covers

Cruise control

Map light

Dash workstation w/USB and 12-volt powerpoint

Motor cover w/integrated snack tray

Instrument panel

OPTIONAL EQUIPMENT

Video camera system w/side view activation from turn signal

Interior

39" LCD HDTV (27P, 29V, 31B, 32M)

48" LCD HDTV (35U)

Dinette Hi-Lo Table w/storage

Amplified digital HDTV antenna system

Satellite system ready

Tinted windows

MCD blackout roller shades

OnePlace® systems monitor

Powered roof vents

LED lights

Vinyl flooring throughout

Entrance assist handle

Framed wall mirror (NA 31B)

Sofa/bed

USB chargers

Soft vinyl ceilings

OPTIONAL EQUIPMENT

Powered StudioLoft™ bed (w/ladder)

Theater Seating (NA 31B)

Galley

Thermoform countertop

Large, 2-door refrigerator/freezer

Microwave oven w/touch controls

3-burner glass top range w/backlit control knobs, stainless-steel trim, flush w/countertop

Pantry

Stainless-steel double sink

Powered ventilator ceiling fan

OPTIONAL EQUIPMENT

Large 4-door refrigerator/freezer w/icemaker, cold water purification system (32M, 35U)

Microwave/convection oven w/touch control

Range w/oven



WEIGHTS & MEASURES	27P	29V	31B	NEW 32M	35U
Length	28'5"	30'	31'2"	31'9"	35'0"
Exterior Height ¹	12'	12'	12'2"	12'1"	12'1"
Exterior Width ²	8'5.5"	8'5.5"	8'5.5"	8'5.5"	8'5.5"
Exterior Storage ³ (cu. ft.)	133	147	139	123	134
Awning Length	19'	17'	19'	17'	16'
Interior Height	6'8"	6'8"	6'8"	6'8"	6'8"
Interior Width	8'0.5"	8'0.5"	8'0.5"	8'0.5"	8'0.5"
Freshwater Tank Capacity ⁴ (gal.)	51	70	70	64	74
Water Heater Capacity (gal.)	6	6	6	6	6
Holding Tank Capacity - Black/Gray ⁴ (gal.)	50/45	40/61	43/59	41/57	41/57
LP Capacity ⁵ (lbs.)	76.14	76.14	76.14	76.14	76.14
Fuel Capacity (gal.)	80	80	80	80	80
GCWR ⁶ (lbs.)	23,000	23,000	23,000	23,000	26,000
GVWR (lbs.)	18,000	18,000	18,000	18,000	22,000
GAWR - Front (lbs.)	7,000	7,000	7,000	7,000	8,000
GAWR - Rear (lbs.)	12,000	12,000	12,000	12,000	15,000
Wheelbase	178"	190"	208"	208"	228"

Ford® F53 Chassis

7.3L PFI V8 engine, TorqShift™ 6-speed automatic transmission w/tow/haul, 210-amp. alternator

Electronic stability control

Hydraulic brakes w/ABS

Trailer hitch⁶ 5,000-lb. drawbar/500-lb. maximum vertical tongue weight

7-pin trailer wiring

Stainless steel wheel liners

Stylized aluminum wheels (35U)

Automatic hydraulic leveling jacks

Rear valve stem extensions

Cab Conveniences

Radio/Rearview Monitor System 7.0" LCD color touch screen, Apple CarPlay®, Android Auto,™ Sirius XM ready, rear color camera, Bluetooth®

Versa driver's seat swivels easily around steering wheel, w/two-position armrest, fixed lumbar support, and multi-adjustable slide/recline

Passenger seat swivels, w/two-position armrests, fixed lumbar support, and multi-adjustable slide/recline

3-point seat belts

Removable utility table

Chassis/house battery radio power switch

Power steering w/tilt and telescoping wheel

Rearview power mirrors w/defrost and power adjust

Powered MCD blackout roller visor/shade (front windshield)

MCD blackout roller shade (driver and passenger windows)

Large panoramic windshield

Driver/passenger snap on vinyl closeout covers

Cruise control

Map light

Dash workstation w/USB and 12-volt powerpoint

Motor cover w/integrated snack tray

Instrument panel

OPTIONAL EQUIPMENT

Video camera system w/side view activation from turn signal

Interior

39" LCD HDTV (27P, 29V, 31B, 32M)

48" LCD HDTV (35U)

Dinette Hi-Lo Table w/storage

Amplified digital HDTV antenna system

Satellite system ready

Tinted windows

MCD blackout roller shades

OnePlace® systems monitor

Powered roof vents

LED lights

Vinyl flooring throughout

Entrance assist handle

Framed wall mirror (NA 31B)

Sofa/bed

USB chargers

Soft vinyl ceilings

OPTIONAL EQUIPMENT

Powered StudioLoft™ bed (w/ladder)

Theater Seating (NA 31B)

Galley

Thermoform countertop

Large, 2-door refrigerator/freezer

Microwave oven w/touch controls

3-burner glass top range w/backlit control knobs, stainless-steel trim, flush w/countertop

Pantry

Stainless-steel double sink

Powered ventilator ceiling fan

OPTIONAL EQUIPMENT

Large 4-door refrigerator/freezer w/icemaker, cold water purification system (32M, 35U)

Microwave/convection oven w/touch control

Range w/oven



Bath

Thermoform countertop
Flexible showerhead
Textured glass shower door (NA 27P)
Shower door w/retractable screen (27P)
Skylight
Toilet w/foot pedal
Powered roof ventilator fan
Towel rack mounted inside of door
Towel bar(s) (NA 27P)
Towel ring(s)
Robe hook(s)
Tissue holder
Medicine cabinet
Mirror

Bedroom

King bed w/foam mattress and storage below (27P, 32M, 35U)
Queen bed w/foam mattress and storage below (29V, 31B)
Headboard
Bunk beds w/foam mattresses, mattress covers, and privacy curtain (31B)
Powered ventilator fan (29V, 31B)
Room divider sliding door (29V, 31B, 32M, 35U)
Room divider curtain (27P)
Pet palace for pet access or storage (32M, 35U)

OPTIONAL EQUIPMENT

2 DVD players w/10.1" LCD monitors and headphones (31B bunk beds)
24" HDTV (29V, 31B, 32M, 35U)
32" HDTV (27P)

Exterior

Premium high-gloss sidewall skin
Graphic package includes black mirrors
Deluxe package includes chrome mirrors
Automatic entrance door steps and screen door

Powered patio awning w/LED lighting
Entertainment center 32" HDTV w/remote and speakers (27P, 31B, 32M, 35U)
Entertainment center 39" HDTV w/remote and speakers (29V)
Front mud flaps
Rearview mirrors w/defrost & power adjust
Side-hinged storage doors w/paddle latch
Porch light w/interior switch
Lighted storage compartments
Ladder
Entry assist handle
PetPal leash tie down
Tailgate Package refrigerator, 3-drawer cabinet, LED lights, stainless steel portable grill with quick-connect LP hose, sink, faucet, wall-mounted bottle opener, garbage bag holder, paper towel holder (29V, 31B)

Heating & Cooling System

15,000 BTU air conditioner
30,000 BTU low-profile furnace (27P, 29V, 31B)
35,000 BTU low-profile furnace (32M)
40,000 BTU low-profile furnace (35U)
2-high-efficiency 13,500 BTU AC (35U)

OPTIONAL EQUIPMENT

Cooling Upgrade Package w/two AC receptacles, 50-amp. power cord, 5,500-watt Cummins Onan® MicroQuiet™ gas generator (27P, 29V, 31B, 32M)

Electrical System

AC/DC load center, 30-amp. converter/charger (27P, 29V, 31B, 32M)
AC/DC load center, 50-amp. converter/charger (35U)
30-amp. power cord
4,000-watt Cummins Onan® MicroQuiet™ gas generator
5,500-watt Cummins Onan® MicroQuiet™ gas generator (35U)

2 deep-cycle Marine/RV Group 31 batteries
Battery disconnect system (coach)
Automatic dual-battery charge control
Auxiliary start circuit
AC duplex receptacle
Cable TV input
Exterior antenna jack
DC receptacles
1,000-watt inverter w/remote panel
Solar panel/battery charger wiring prep three-way, solar, plug-ready port located on roof and single port in exterior bay, for aftermarket installation, up to 450-watts
WiFi Prep Kit

OPTIONAL EQUIPMENT

One 115-watt solar panel mounted onto roof
Solar panel battery charge system

Plumbing System

Service Center colored labels, pressurized city water hookup w/diverter valve, drainage valves, 10' sewer hose
6-gallon LP water heater w/electronic ignition
Heated holding tank compartment
Permanent-mount LP tank w/gauge
On-demand water pump
TrueLevel™ holding tank monitoring system
Winterization Package water heater bypass valve and siphon tube
LPG Quick Connect (patio side) (29V, 31B, 35U)
Water system filtration package
Holding tank flushing system (black tank only)

Safety

Child seat tether anchor (forward facing dinette seat)
LP, smoke, and carbon monoxide detectors
10 BC fire extinguisher
Ground fault interrupter
High-mount brake lamp

Warranty⁷

12-month/15,000-mile basic limited warranty⁸
36-month/36,000-mile limited warranty on structure⁸
10-year limited parts-and-labor warranty on fiberglass roof skin⁸

FOOTNOTES

- The height of each model is measured to the top of the tallest standard feature and is based on the curb weight of a typically equipped unit. The actual height of your vehicle may vary by several inches depending on chassis or equipment variations. Please contact your dealer for further information.
- Floorplans feature a wide-body design - over 96". In making your purchase decision, you should be aware that some states restrict access on some or all state roads to 96" in body width. Before making your purchase decision, you should confirm the road usage laws in the states of interest to you.
- The load capacity of your motorhome is designated by weight, not by volume, so you cannot necessarily use all available space when loading your motorhome.
- Capacities are based on measurements prior to tank installation. Slight capacity variations can result due to installation applications.
- Capacities shown are tank manufacturer's listed water capacity (W.C.). Actual filled LP capacity is 80% of listing due to overfilling prevention device on tank.
- Actual towing capacity is dependent on your particular loading and towing circumstances which includes the GVWR, GAWR, and GCWR, as well as adequate trailer brakes. Please refer to the Operator's Manual of your vehicle for further towing information.
- See separate chassis warranty.
- See your dealer for complete warranty information.

NA Not Available

Not all items available in combination. See dealer for details.

Because features, specifications, equipment, and options may vary from those highlighted in this brochure, the buyer is responsible for confirming with the dealer the features, specifications, equipment, and options included in their specific vehicle. In addition, Winnebago's program of continuous product improvement may result in changes to vehicle specifications, equipment, model availability, and price without notice.



Bath

Thermoform countertop
Flexible showerhead
Textured glass shower door (NA 27P)
Shower door w/retractable screen (27P)
Skylight
Toilet w/foot pedal
Powered roof ventilator fan
Towel rack mounted inside of door
Towel bar(s) (NA 27P)
Towel ring(s)
Robe hook(s)
Tissue holder
Medicine cabinet
Mirror

Bedroom

King bed w/foam mattress and storage below (27P, 32M, 35U)
Queen bed w/foam mattress and storage below (29V, 31B)
Headboard
Bunk beds w/foam mattresses, mattress covers, and privacy curtain (31B)
Powered ventilator fan (29V, 31B)
Room divider sliding door (29V, 31B, 32M, 35U)
Room divider curtain (27P)
Pet palace for pet access or storage (32M, 35U)

OPTIONAL EQUIPMENT

2 DVD players w/10.1" LCD monitors and headphones (31B bunk beds)
24" HDTV (29V, 31B, 32M, 35U)
32" HDTV (27P)

Exterior

Premium high-gloss sidewall skin
Graphic package includes black mirrors
Deluxe package includes chrome mirrors
Automatic entrance door steps and screen door

Powered patio awning w/LED lighting
Entertainment center 32" HDTV w/remote and speakers (27P, 31B, 32M, 35U)
Entertainment center 39" HDTV w/remote and speakers (29V)
Front mud flaps
Rearview mirrors w/defrost & power adjust
Side-hinged storage doors w/paddle latch
Porch light w/interior switch
Lighted storage compartments
Ladder
Entry assist handle
PetPal leash tie down
Tailgate Package refrigerator, 3-drawer cabinet, LED lights, stainless steel portable grill with quick-connect LP hose, sink, faucet, wall-mounted bottle opener, garbage bag holder, paper towel holder (29V, 31B)

Heating & Cooling System

15,000 BTU air conditioner
30,000 BTU low-profile furnace (27P, 29V, 31B)
35,000 BTU low-profile furnace (32M)
40,000 BTU low-profile furnace (35U)
2-high-efficiency 13,500 BTU AC (35U)

OPTIONAL EQUIPMENT

Cooling Upgrade Package w/two AC receptacles, 50-amp. power cord, 5,500-watt Cummins Onan® MicroQuiet™ gas generator (27P, 29V, 31B, 32M)

Electrical System

AC/DC load center, 30-amp. converter/charger (27P, 29V, 31B, 32M)
AC/DC load center, 50-amp. converter/charger (35U)
30-amp. power cord
4,000-watt Cummins Onan® MicroQuiet™ gas generator
5,500-watt Cummins Onan® MicroQuiet™ gas generator (35U)

2 deep-cycle Marine/RV Group 31 batteries
Battery disconnect system (coach)
Automatic dual-battery charge control
Auxiliary start circuit
AC duplex receptacle
Cable TV input
Exterior antenna jack
DC receptacles
1,000-watt inverter w/remote panel
Solar panel/battery charger wiring prep three-way, solar, plug-ready port located on roof and single port in exterior bay, for aftermarket installation, up to 450-watts
WiFi Prep Kit

OPTIONAL EQUIPMENT

One 115-watt solar panel mounted onto roof
Solar panel battery charge system

Plumbing System

Service Center colored labels, pressurized city water hookup w/diverter valve, drainage valves, 10' sewer hose
6-gallon LP water heater w/electronic ignition
Heated holding tank compartment
Permanent-mount LP tank w/gauge
On-demand water pump
TrueLevel™ holding tank monitoring system
Winterization Package water heater bypass valve and siphon tube
LPG Quick Connect (patio side) (29V, 31B, 35U)
Water system filtration package
Holding tank flushing system (black tank only)

Safety

Child seat tether anchor (forward facing dinette seat)
LP, smoke, and carbon monoxide detectors
10 BC fire extinguisher
Ground fault interrupter
High-mount brake lamp

Warranty⁷

12-month/15,000-mile basic limited warranty⁸
36-month/36,000-mile limited warranty on structure⁸
10-year limited parts-and-labor warranty on fiberglass roof skin⁸

FOOTNOTES

- The height of each model is measured to the top of the tallest standard feature and is based on the curb weight of a typically equipped unit. The actual height of your vehicle may vary by several inches depending on chassis or equipment variations. Please contact your dealer for further information.
- Floorplans feature a wide-body design - over 96". In making your purchase decision, you should be aware that some states restrict access on some or all state roads to 96" in body width. Before making your purchase decision, you should confirm the road usage laws in the states of interest to you.
- The load capacity of your motorhome is designated by weight, not by volume, so you cannot necessarily use all available space when loading your motorhome.
- Capacities are based on measurements prior to tank installation. Slight capacity variations can result due to installation applications.
- Capacities shown are tank manufacturer's listed water capacity (W.C.). Actual filled LP capacity is 80% of listing due to overfilling prevention device on tank.
- Actual towing capacity is dependent on your particular loading and towing circumstances which includes the GVWR, GAWR, and GCWR, as well as adequate trailer brakes. Please refer to the Operator's Manual of your vehicle for further towing information.
- See separate chassis warranty.
- See your dealer for complete warranty information.

NA Not Available

Not all items available in combination. See dealer for details.

Because features, specifications, equipment, and options may vary from those highlighted in this brochure, the buyer is responsible for confirming with the dealer the features, specifications, equipment, and options included in their specific vehicle. In addition, Winnebago's program of continuous product improvement may result in changes to vehicle specifications, equipment, model availability, and price without notice.