

More ways to make  
yourself at home.



# VISTA

QUALITY INNOVATION SERVICE

**WINNEBAGO**

More ways to make  
yourself at home.



# VISTA

QUALITY INNOVATION SERVICE

**WINNEBAGO**



**On the Cover:** Pewter Sea Mist Deluxe Graphics  
**Interior:** 32M Lennon with Charcoal with Driftwood 2 Cabinetry



The spacious galley with double-bowl stainless sink, three-burner range top and oven, and two-door refrigerator/freezer makes creating your favorite meals a genuine pleasure.



The Vista offers plenty of cabinet space, plus large drawers mounted on durable, full-extension metal slides that allow them to open fully for easy access.



Pass the popcorn! Available theater seating with individual recliner, footrests and center console makes every movie a special feature in your Vista.

## Expands Horizons while Bringing Families Together

When the open road calls, there's no better way to answer than the Winnebago® Vista®. Combining time-tested, road-proven Winnebago quality with a strong heritage of innovation, the Vista is an ideal Class A coach for RVers of all types.

Four slideout-equipped floorplans return, joined by the new 32M, a double-slideout floorplan featuring a walkaround king bed with two nightstands, and a dinette and sofa/bed or optional reclining theater seats in the lounge.

The Ford® F53 chassis is powered by a new 7.3L PFI V8 engine, and brings a host of new safety and convenience features, including Hill-Start Assist and Electronic Stability Control, available only on Winnebago's 2021 Class A Gas products. The easy-driving Vista comes fully loaded, yet brings plenty of power for a towing dinghy or bringing along your favorite toys.



**On the Cover:** Pewter Sea Mist Deluxe Graphics  
**Interior:** 32M Lennon with Charcoal with Driftwood 2 Cabinetry



The spacious galley with double-bowl stainless sink, three-burner range top and oven, and two-door refrigerator/freezer makes creating your favorite meals a genuine pleasure.



The Vista offers plenty of cabinet space, plus large drawers mounted on durable, full-extension metal slides that allow them to open fully for easy access.



Pass the popcorn! Available theater seating with individual recliner, footrests and center console makes every movie a special feature in your Vista.

## Expands Horizons while Bringing Families Together

When the open road calls, there's no better way to answer than the Winnebago® Vista®. Combining time-tested, road-proven Winnebago quality with a strong heritage of innovation, the Vista is an ideal Class A coach for RVers of all types.

Four slideout-equipped floorplans return, joined by the new 32M, a double-slideout floorplan featuring a walkaround king bed with two nightstands, and a dinette and sofa/bed or optional reclining theater seats in the lounge.

The Ford® F53 chassis is powered by a new 7.3L PFI V8 engine, and brings a host of new safety and convenience features, including Hill-Start Assist and Electronic Stability Control, available only on Winnebago's 2021 Class A Gas products. The easy-driving Vista comes fully loaded, yet brings plenty of power for a towing dinghy or bringing along your favorite toys.



The Vista's comfortable, spacious lounge can accommodate a crowd, thanks in part to swivel cab seats and their accompanying removable pedestal table. A dinette with a hi-lo table is a favorite gathering spot, and offers extra storage for gear. The sofa/bed is perfectly positioned to view the widescreen LCD HDTV, while available theater seating, with individually operated recliners, footrests and center console, will make every show seem like a world premiere. USB chargers in the dining area are conveniently placed for device charging.



Hi-lo table



Lounge with theater seating



Swiveling cab seats



LCD HDTV

WINNEBAGO  
**VISTA** / Lounge



The Vista's comfortable, spacious lounge can accommodate a crowd, thanks in part to swivel cab seats and their accompanying removable pedestal table. A dinette with a hi-lo table is a favorite gathering spot, and offers extra storage for gear. The sofa/bed is perfectly positioned to view the widescreen LCD HDTV, while available theater seating, with individually operated recliners, footrests and center console, will make every show seem like a world premiere. USB chargers in the dining area are conveniently placed for device charging.



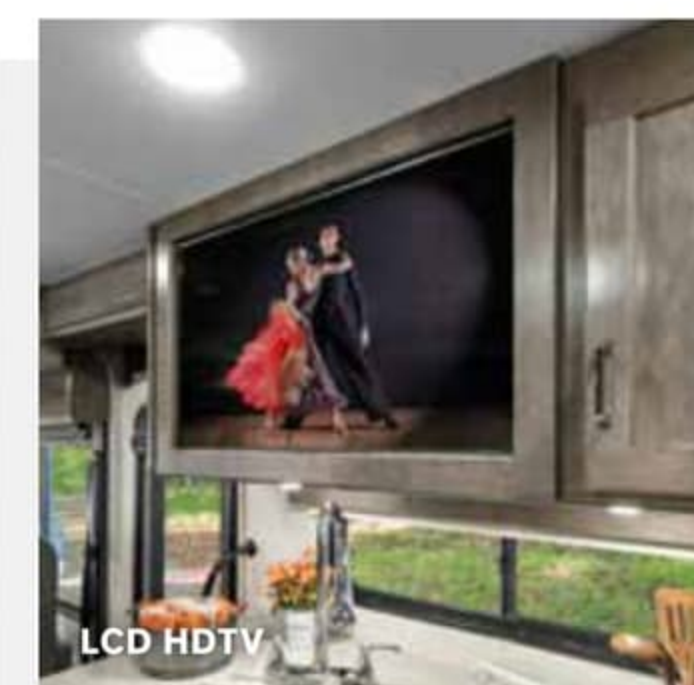
Hi-lo table



Lounge with theater seating



Swiveling cab seats



LCD HDTV



Your inner chef will shine in the Vista galley. The pantry and 10 cu. ft. two-door compressor-driven refrigerator/freezer keep ingredients fresh and close at hand. Both prep and cleanup are easier thanks to the stainless-steel double bowl sink. When it's time to cook, the recessed three-burner range top with black glass cover features sealed burners that fire instantly via piezo ignition, and the microwave oven with touch controls speeds cooking as well. An optional three-burner range with oven is also available for baking.



Thermoform countertops



12 cu. ft. four-door refrigerator (available on 32M, 35U)



Three-burner range top



Stainless-steel double bowl sink



Available convection microwave oven



Your inner chef will shine in the Vista galley. The pantry and 10 cu. ft. two-door compressor-driven refrigerator/freezer keep ingredients fresh and close at hand. Both prep and cleanup are easier thanks to the stainless-steel double bowl sink. When it's time to cook, the recessed three-burner range top with black glass cover features sealed burners that fire instantly via piezo ignition, and the microwave oven with touch controls speeds cooking as well. An optional three-burner range with oven is also available for baking.



Thermoform countertops



12 cu. ft. four-door refrigerator (available on 32M, 35U)



Three-burner range top



Stainless-steel double bowl sink



Available convection microwave oven





The private rear bedroom with walkaround queen or king bed is a hallmark of the Vista, and much appreciated at the end of a busy day. Storage in the wardrobe and dual nightstands (with USB chargers) is augmented by a large, easily accessible below-bed compartment, and the available HDTV is perfectly positioned for nighttime viewing. Family and overnight guests are accommodated in front, either in the sofa/bed or the optional powered StudioLoft™ bed over the cab. And the bunk beds with separate DVD players in the 31B are a special treat for kids. Every Vista bath comes fully equipped with a shower, flexible showerhead and textured glass shower door or retractable screen (27P), towel bar(s) and/or towel ring(s), medicine cabinet, roof ventilator fan, and skylight.



StudioLoft bed



Dual nightstands



Bedroom HDTV



Wardrobe



Bathroom



Shower with skylight



The private rear bedroom with walkaround queen or king bed is a hallmark of the Vista, and much appreciated at the end of a busy day. Storage in the wardrobe and dual nightstands (with USB chargers) is augmented by a large, easily accessible below-bed compartment, and the available HDTV is perfectly positioned for nighttime viewing. Family and overnight guests are accommodated in front, either in the sofa/bed or the optional powered StudioLoft™ bed over the cab. And the bunk beds with separate DVD players in the 31B are a special treat for kids. Every Vista bath comes fully equipped with a shower, flexible showerhead and textured glass shower door or retractable screen (27P), towel bar(s) and/or towel ring(s), medicine cabinet, roof ventilator fan, and skylight.



StudioLoft bed



Dual nightstands



Bedroom HDTV



Wardrobe



Bathroom



Shower with skylight



New and veteran RVers will feel right at home in the Vista cab. The adjustable seats swivel, slide and recline, and offer superb views out the panoramic windshield, while the removable utility table and dash workstation (with USB and 12V outlets) provide handy work surfaces. The color rear camera feeds the new, larger, Sony® 7" touch panel color monitor, which is Sirius XM®-ready and Bluetooth®-compatible with Android Auto™ and Apple CarPlay®. When you arrive, add instant privacy by lowering the powered MCD blackout roller visor/shade on the front windshield.



Adjustable swivel and reclining cab seats



Dash workstation



Sony 7" touch panel color monitor



Powered MCD visor/shade



Steering wheel with tilt/telescoping and speed control



New and veteran RVers will feel right at home in the Vista cab. The adjustable seats swivel, slide and recline, and offer superb views out the panoramic windshield, while the removable utility table and dash workstation (with USB and 12V outlets) provide handy work surfaces. The color rear camera feeds the new, larger, Sony® 7" touch panel color monitor, which is Sirius XM®-ready and Bluetooth®-compatible with Android Auto™ and Apple CarPlay®. When you arrive, add instant privacy by lowering the powered MCD blackout roller visor/shade on the front windshield.



Adjustable swivel and reclining cab seats



Dash workstation



Sony 7" touch panel color monitor



Powered MCD visor/shade



Steering wheel with tilt/telescoping and speed control



Whether you choose the standard graphic package or opt for deluxe full-body paint, the Vista's premium high-gloss sidewalls will brighten any campsite. Deploy the powered awning, unpack the storage compartments (their LED lights are handy after dark), and unwind in front of the entertainment center, which features a widescreen HDTV and speakers – there's even a USB charging port. The Tailgate Package (available on the 29V and 31B) makes your Vista chill-and-grill headquarters, thanks to its refrigerator, stainless steel portable grill with quick-connect LP hose, sink/faucet, three-drawer cabinet and more. Other standard equipment includes a PetPal leash tie down. LED porch and awning lights, automatic entrance door steps and more – just about everything you need to feel at home, just about anywhere.



Powered awning



Passthrough storage



Exterior entertainment center



Tailgate package



Automatic entrance steps

WINNEBAGO  
**VISTA** / Exterior



Whether you choose the standard graphic package or opt for deluxe full-body paint, the Vista's premium high-gloss sidewalls will brighten any campsite. Deploy the powered awning, unpack the storage compartments (their LED lights are handy after dark), and unwind in front of the entertainment center, which features a widescreen HDTV and speakers – there's even a USB charging port. The Tailgate Package (available on the 29V and 31B) makes your Vista chill-and-grill headquarters, thanks to its refrigerator, stainless steel portable grill with quick-connect LP hose, sink/faucet, three-drawer cabinet and more. Other standard equipment includes a PetPal leash tie down. LED porch and awning lights, automatic entrance door steps and more – just about everything you need to feel at home, just about anywhere.



Powered awning



Passthrough storage



Exterior entertainment center

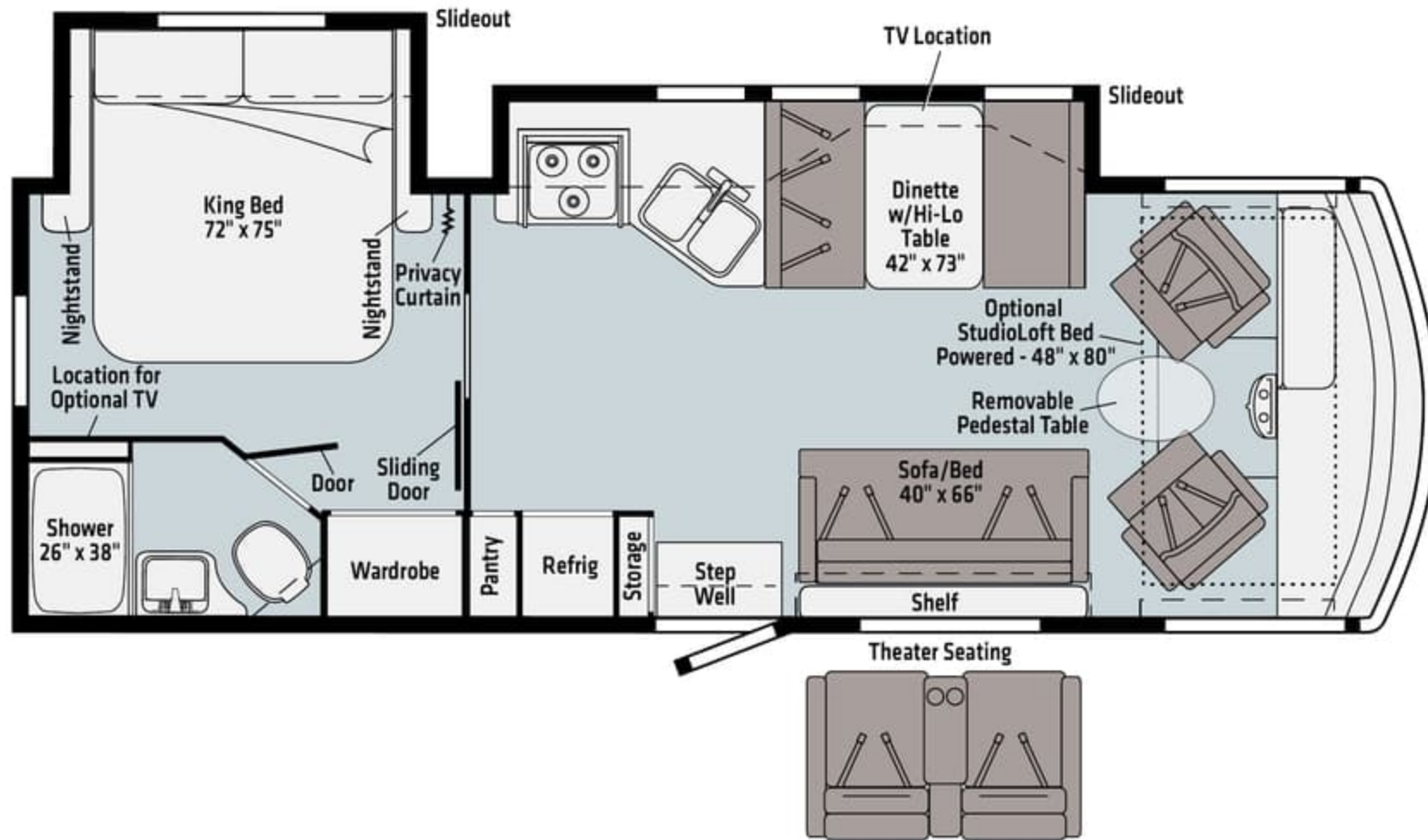


Tailgate package



Automatic entrance steps

**27P**



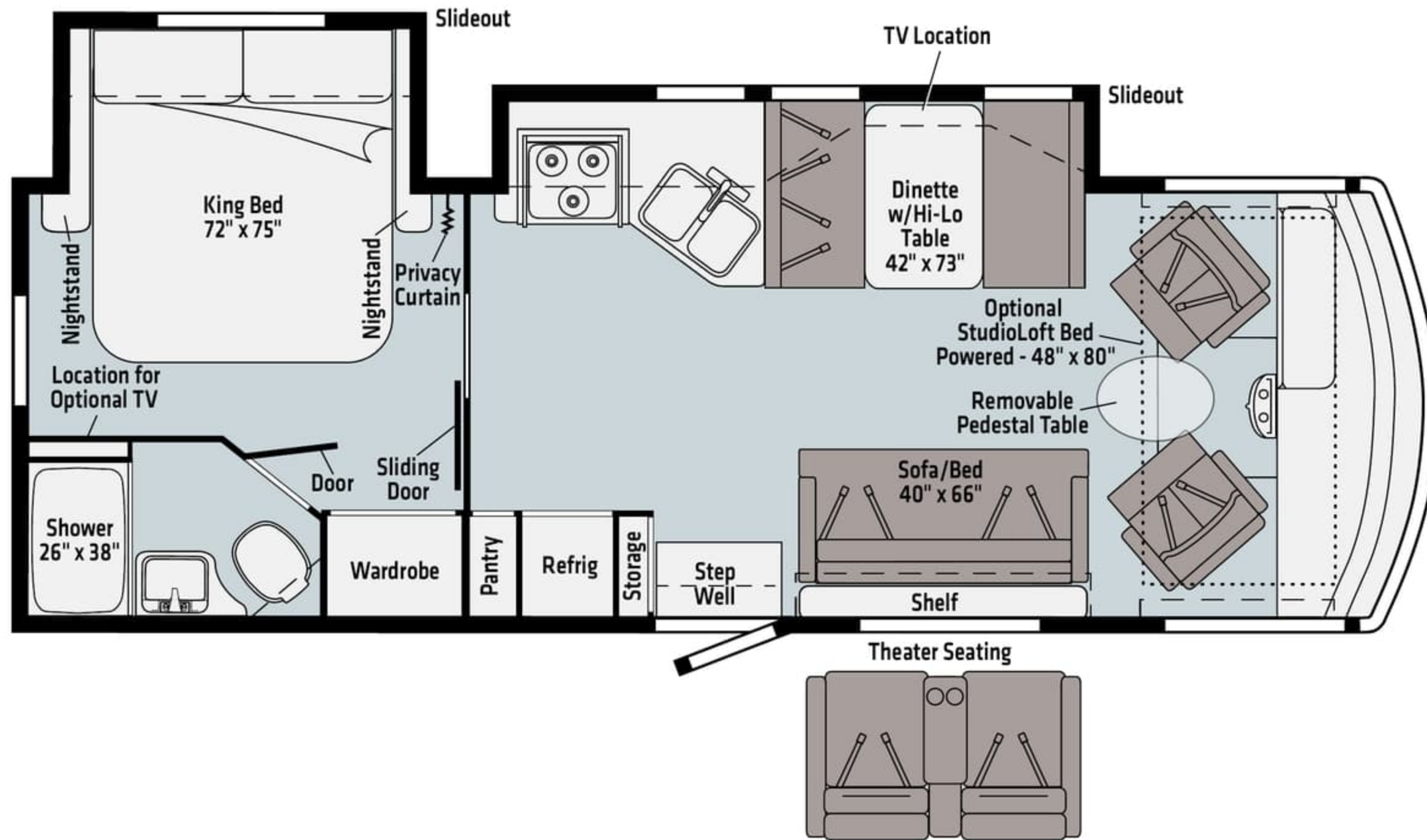
Ultrafabrics  
UF2 Premium  
Leatherette

Residential  
Vinyl  
Flooring

Dashed lines denote overhead storage areas. Floorplans and specifications are also available online at [Winnebago.com](http://Winnebago.com)



27P



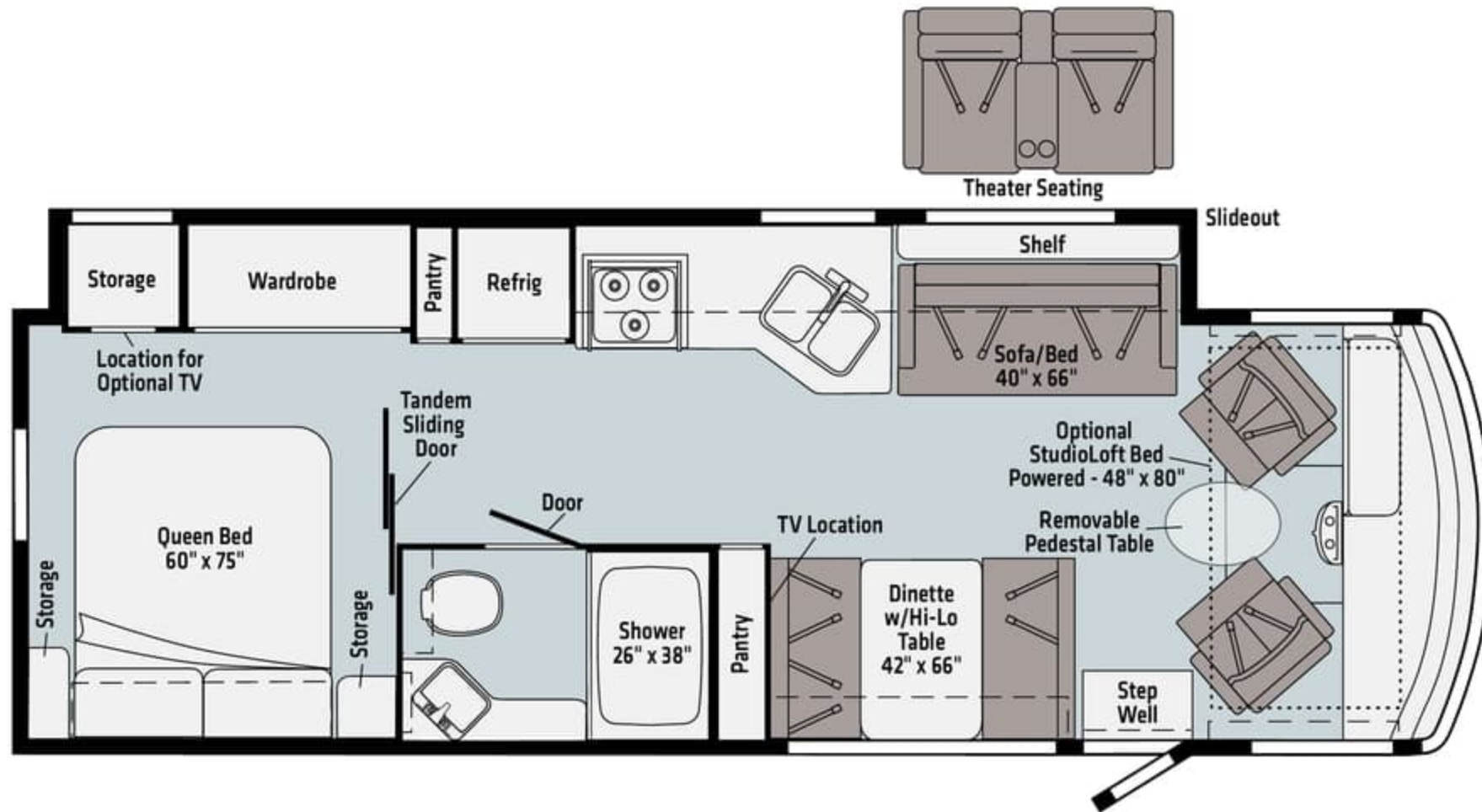
Ultrafabrics  
UF2 Premium  
Leatherette

Residential  
Vinyl  
Flooring

Dashed lines denote overhead storage areas. Floorplans and specifications are also available online at [Winnebago.com](http://Winnebago.com)



**29V**



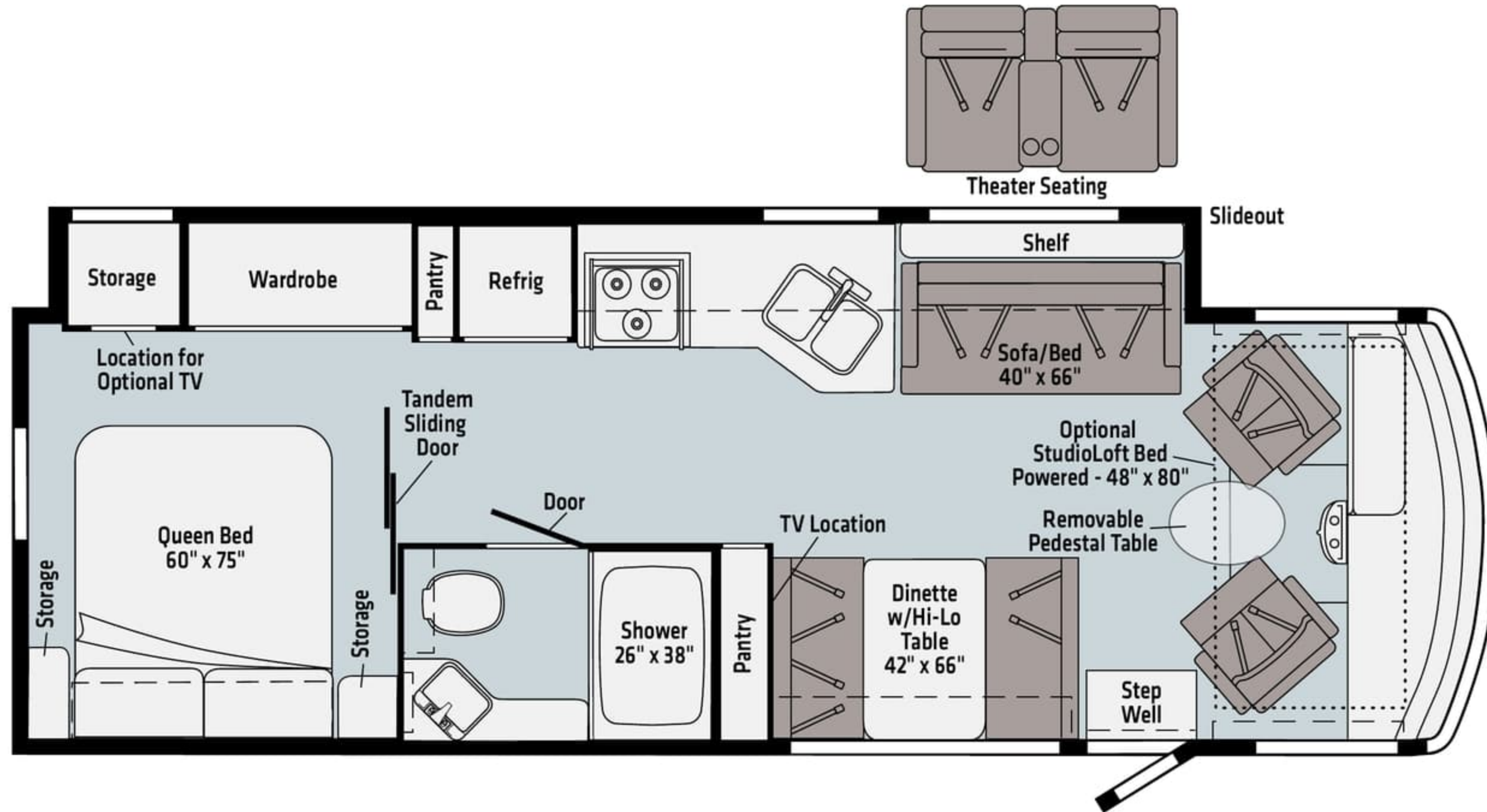
Ultrafabrics  
UF2 Premium  
Leatherette

Residential  
Vinyl  
Flooring

Dashed lines denote overhead storage areas. Floorplans and specifications are also available online at [Winnebago.com](http://Winnebago.com)



**29V**



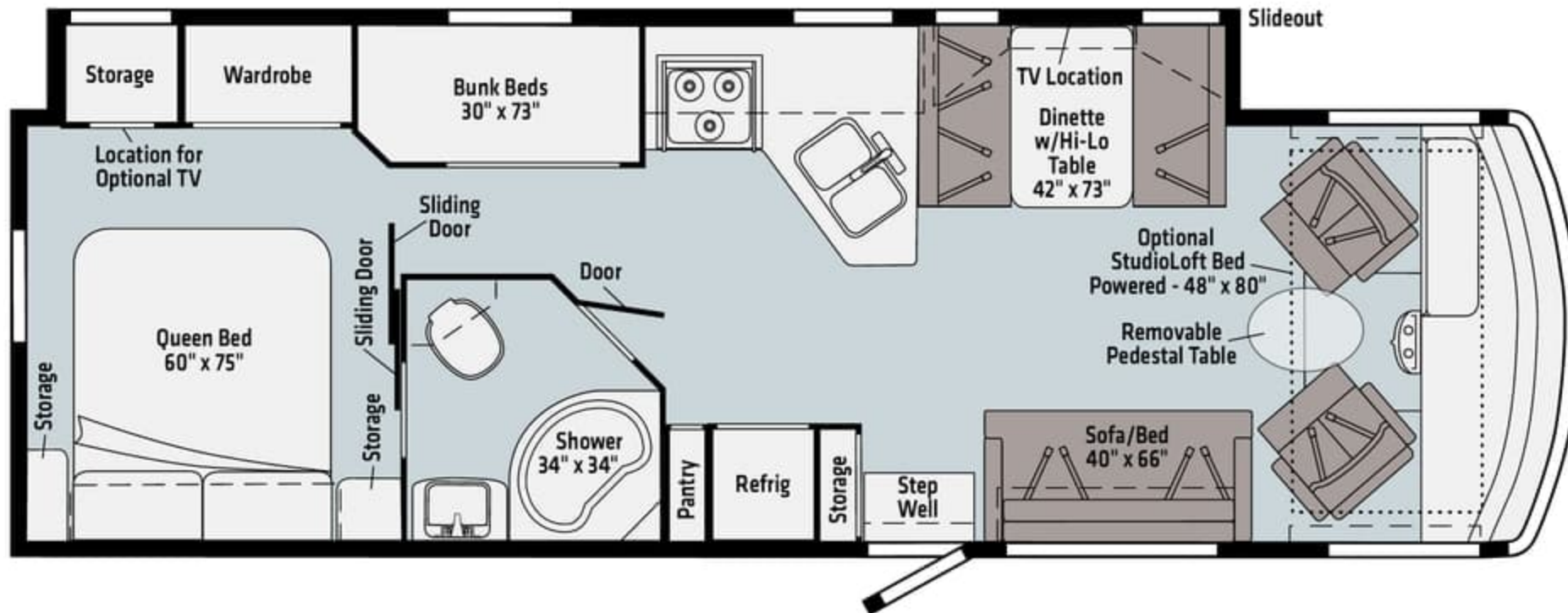
Ultrafabrics  
UF2 Premium  
Leatherette

Residential  
Vinyl  
Flooring

Dashed lines denote overhead storage areas. Floorplans and specifications are also available online at [Winnebago.com](http://Winnebago.com)



**31B**



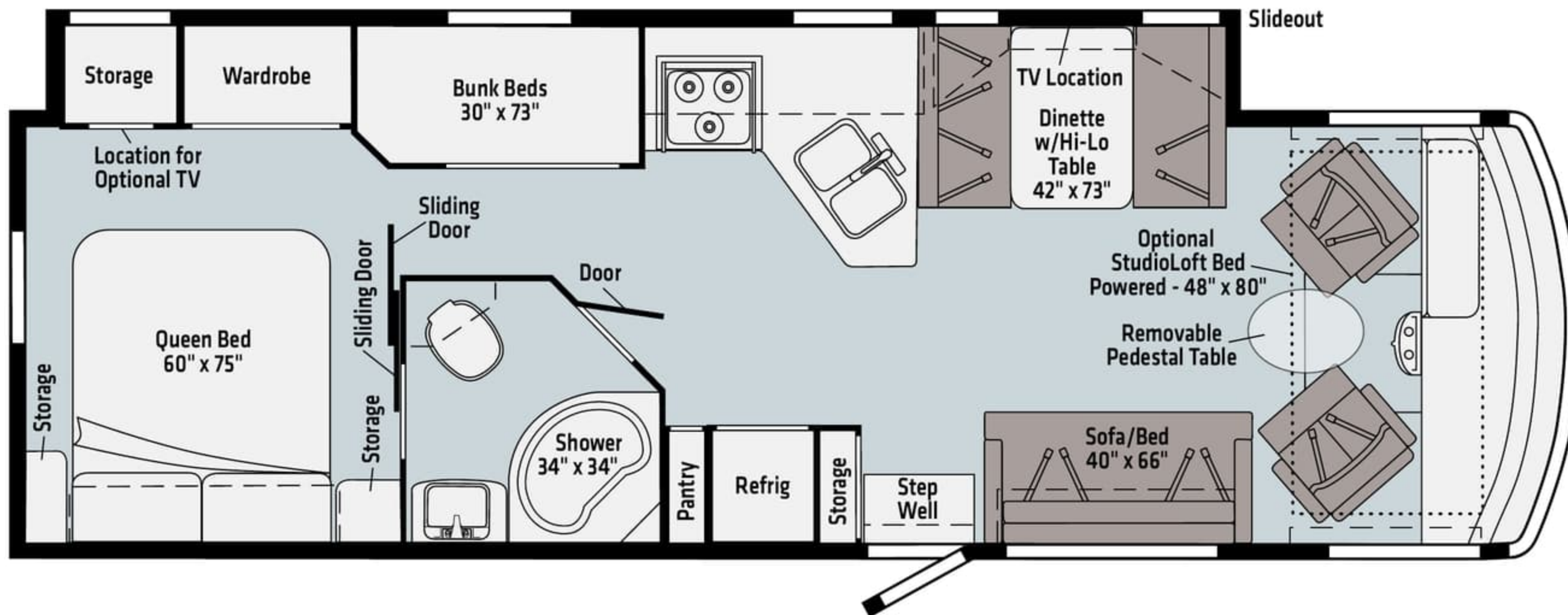
Ultrafabrics  
UF2 Premium  
Leatherette

Residential  
Vinyl  
Flooring

Dashed lines denote overhead storage areas. Floorplans and specifications are also available online at [Winnebago.com](http://Winnebago.com)



**31B**

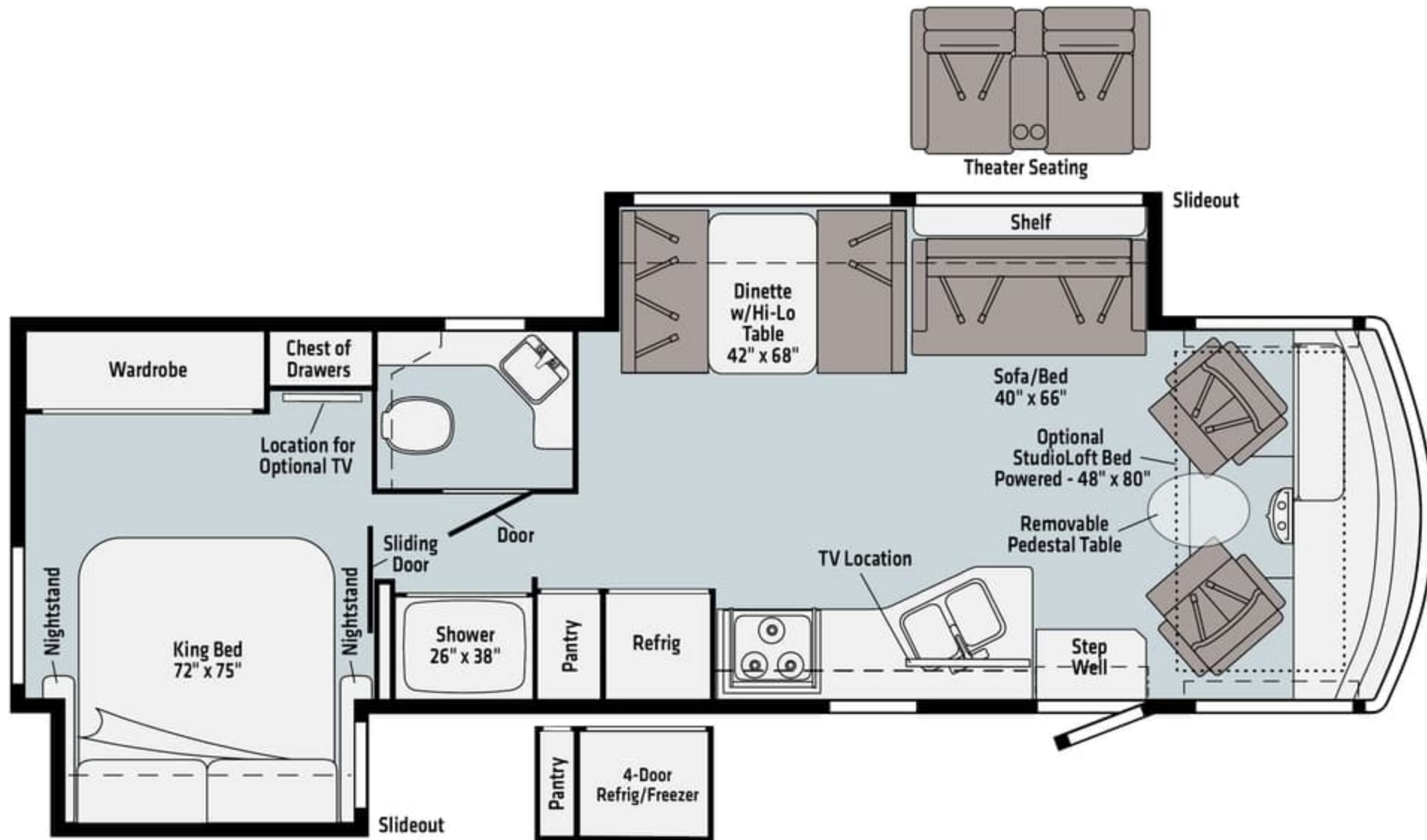


- Ultrafabrics UF2 Premium Leatherette
- Residential Vinyl Flooring

Dashed lines denote overhead storage areas. Floorplans and specifications are also available online at [Winnebago.com](http://Winnebago.com)



NEW  
**32M**

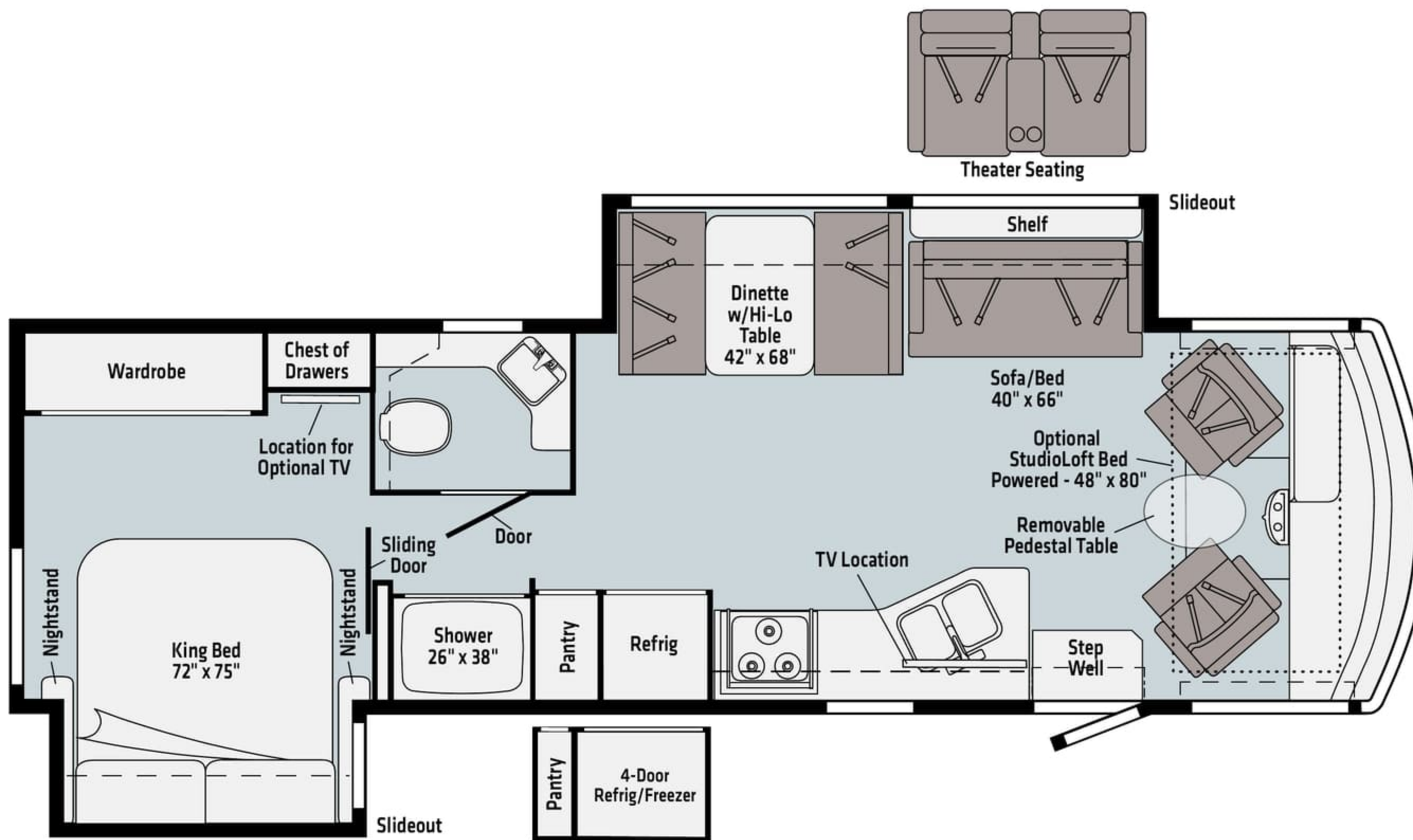


Ultrafabrics  
UF2 Premium  
Leatherette

Residential  
Vinyl  
Flooring

Dashed lines denote overhead storage areas. Floorplans and specifications are also available online at [Winnebago.com](http://Winnebago.com)

NEW  
**32M**

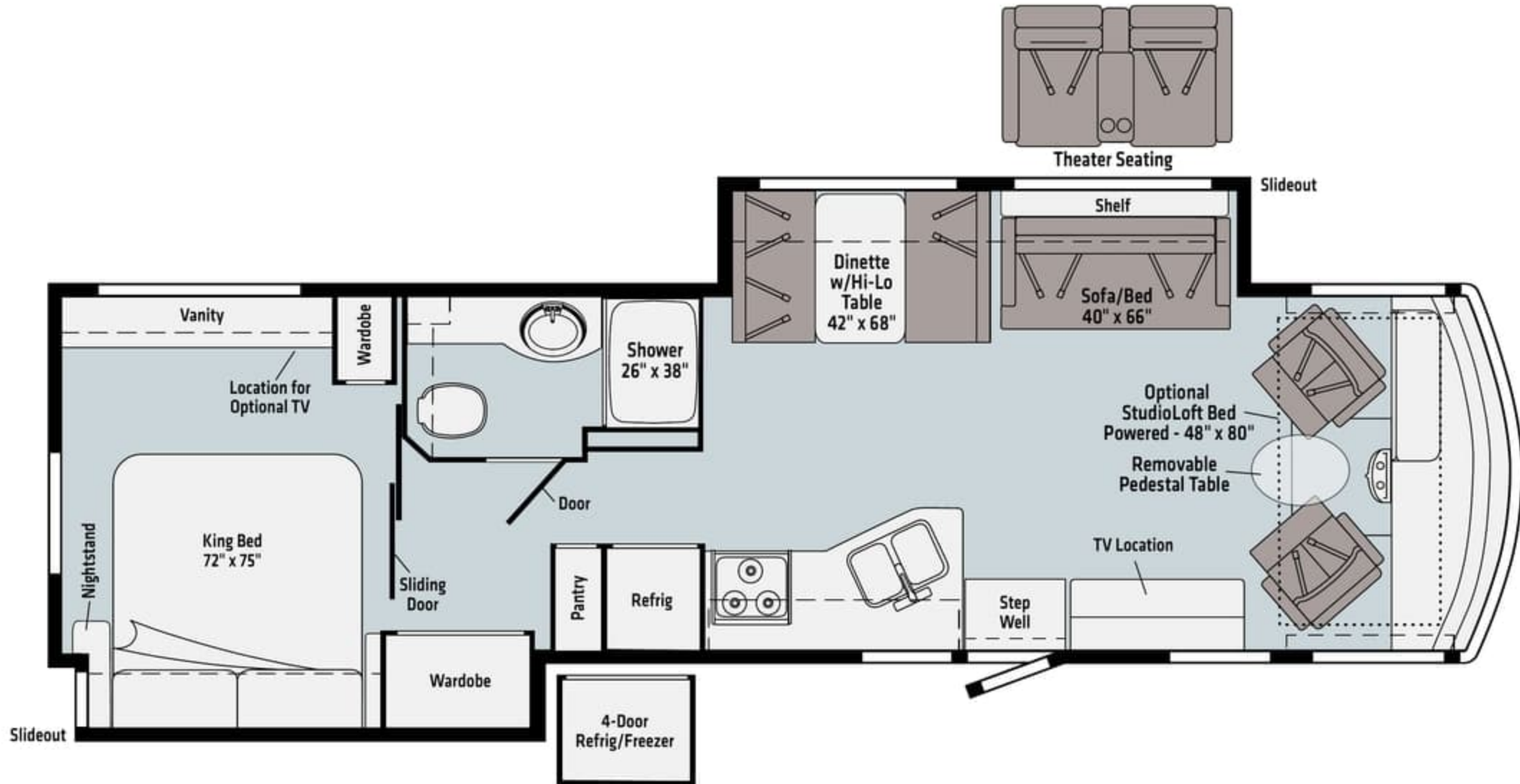


Ultrafabrics  
UF2 Premium  
Leatherette

Residential  
Vinyl  
Flooring

Dashed lines denote overhead storage areas. Floorplans and specifications are also available online at [Winnebago.com](http://Winnebago.com)

# 35U



Ultrafabrics  
UF2 Premium  
Leatherette

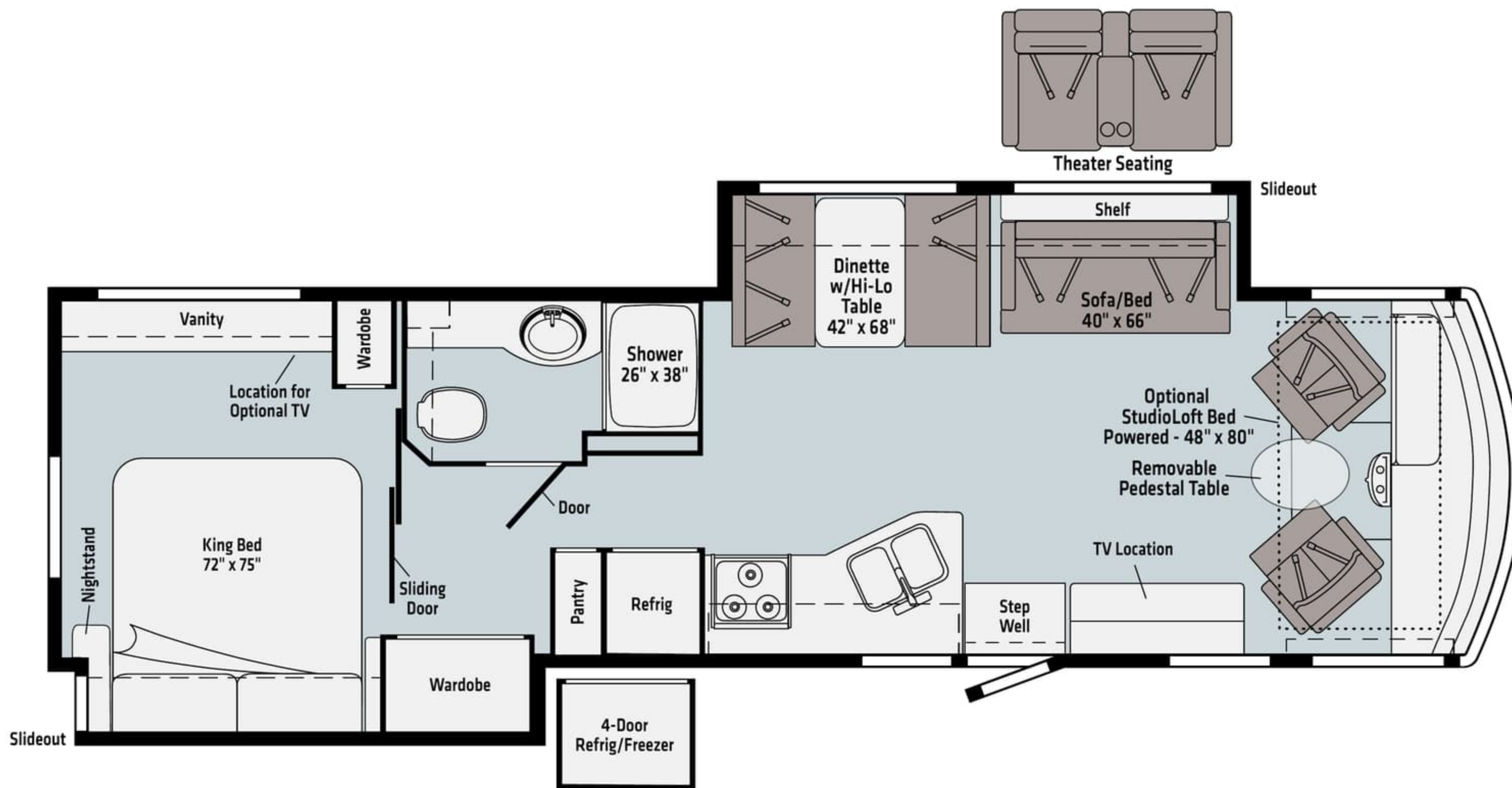
Residential  
Vinyl  
Flooring

Dashed lines denote overhead storage areas. Floorplans and specifications are also available online at [Winnebago.com](http://Winnebago.com)

WINNEBAGO  
**VISTA** / Floorplan



# 35U



Ultrafabrics  
UF2 Premium  
Leatherette

Residential  
Vinyl  
Flooring

Dashed lines denote overhead storage areas. Floorplans and specifications are also available online at [Winnebago.com](http://Winnebago.com)





**Cafe**  
DELUXE GRAPHICS



**Sea Mist**  
DELUXE GRAPHICS



**Cafe Mist**  
DELUXE GRAPHICS



**Pewter Sea Mist**  
DELUXE GRAPHICS



**Cafe**  
DELUXE GRAPHICS



**Sea Mist**  
DELUXE GRAPHICS



**Cafe Mist**  
DELUXE GRAPHICS

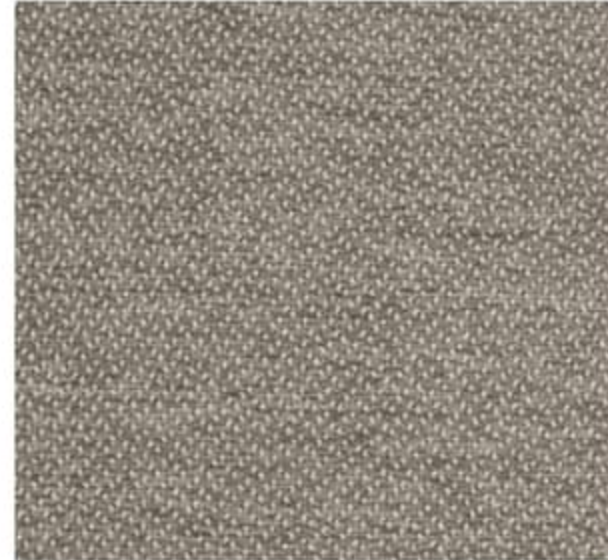


**Pewter Sea Mist**  
DELUXE GRAPHICS

## Lennon with Charcoal



Ultrafabrics UF2 Premium Leatherette



Feature Fabric



Wall Board



Bedsread



Countertop



Residential Vinyl Flooring

## Wood



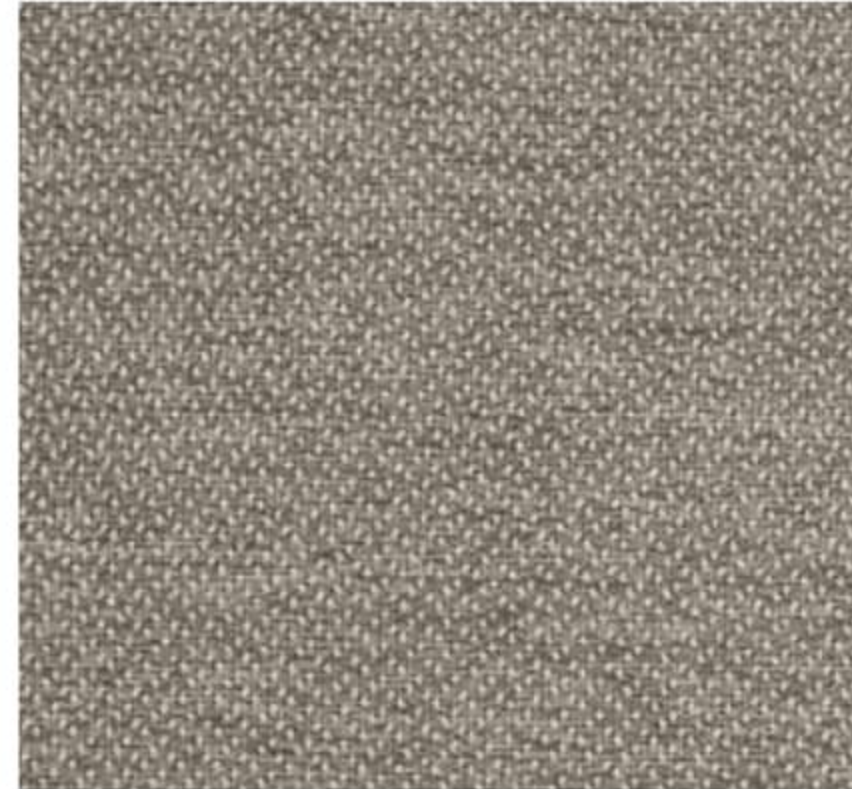
Driftwood 2

*Winnebago® reserves the right to change décor materials and specifications without notice or obligation.*

## Lennon with Charcoal



Ultrafabrics UF2 Premium Leatherette



Feature Fabric



Wall Board



Bedsread



Countertop



Residential Vinyl Flooring

## Wood



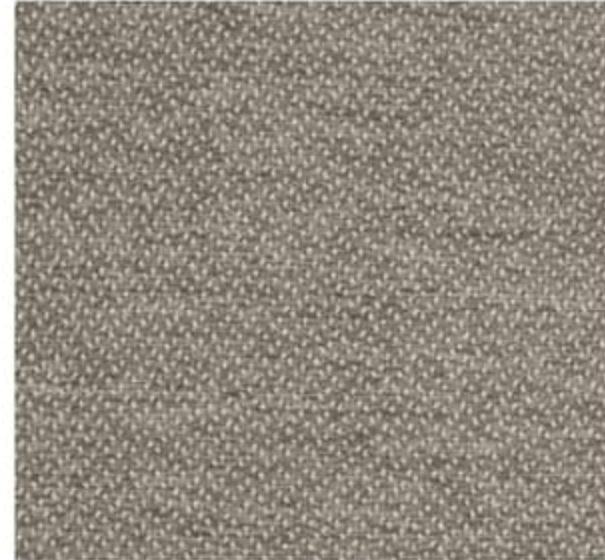
Driftwood 2

*Winnebago® reserves the right to change décor materials and specifications without notice or obligation.*

## Lennon with Medium Gray



Ultrafabrics UF2 Premium Leatherette



Feature Fabric



Wall Board



Bedspread



Countertop



Residential Vinyl Flooring

## Wood



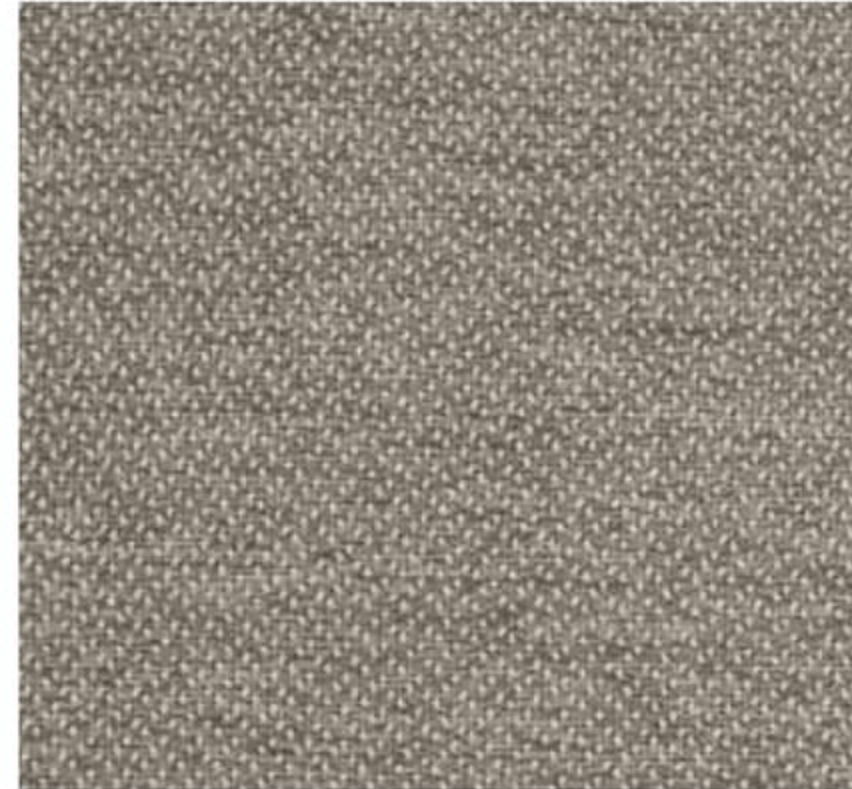
Driftwood 2

*Winnebago® reserves the right to change décor materials and specifications without notice or obligation.*

## Lennon with Medium Gray



Ultrafabrics UF2 Premium Leatherette



Feature Fabric



Wall Board



Bedsread



Countertop



Residential Vinyl Flooring

## Wood



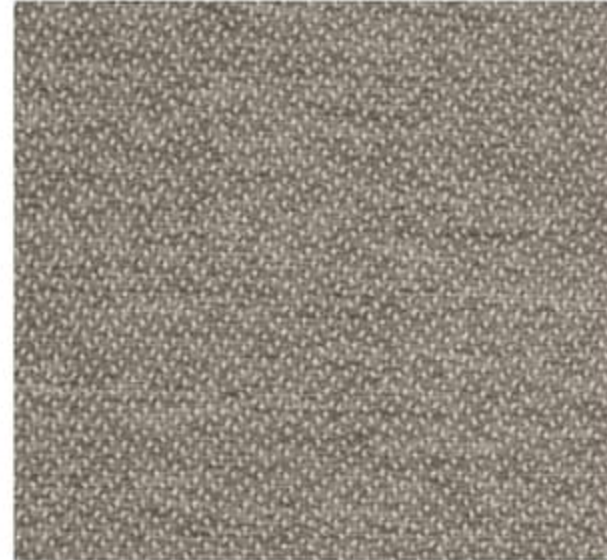
Driftwood 2

*Winnebago® reserves the right to change décor materials and specifications without notice or obligation.*

## Starr with Charcoal



Ultrafabrics UF2 Premium Leatherette



Feature Fabric



Wall Board



Bedspread



Countertop



Residential Vinyl Flooring

## Wood



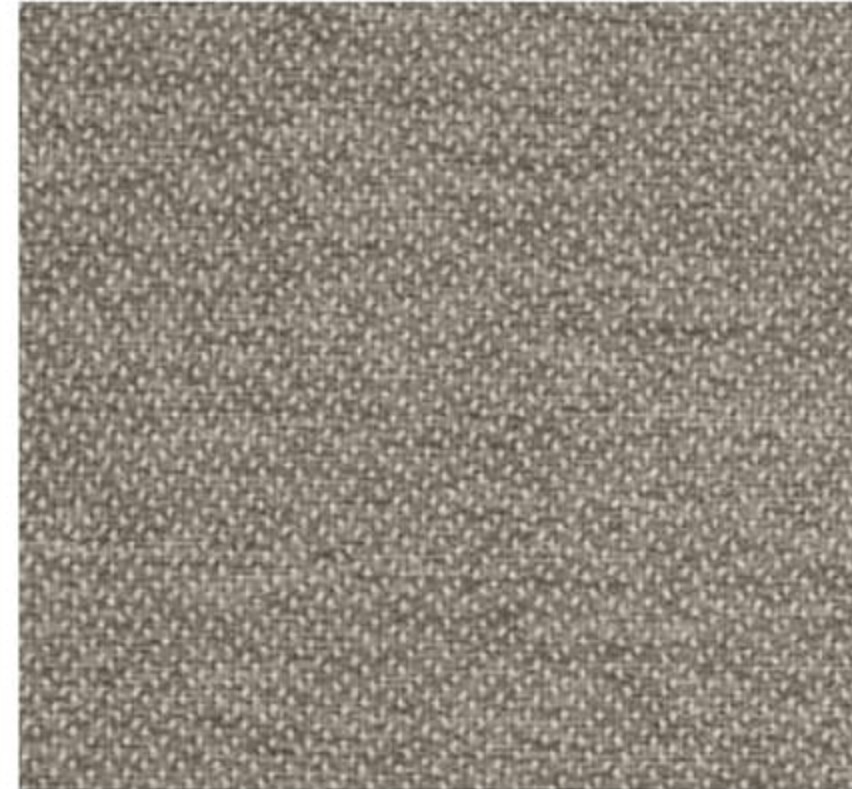
Columbian Walnut

*Winnebago® reserves the right to change décor materials and specifications without notice or obligation.*

## Starr with Charcoal



Ultrafabrics UF2 Premium Leatherette



Feature Fabric



Wall Board



Bedsread



Countertop



Residential Vinyl Flooring

## Wood



Columbian Walnut

*Winnebago® reserves the right to change décor materials and specifications without notice or obligation.*



No one knows RVing like Winnebago®. Here's why smart RVers have chosen Winnebago for more than 60 years.

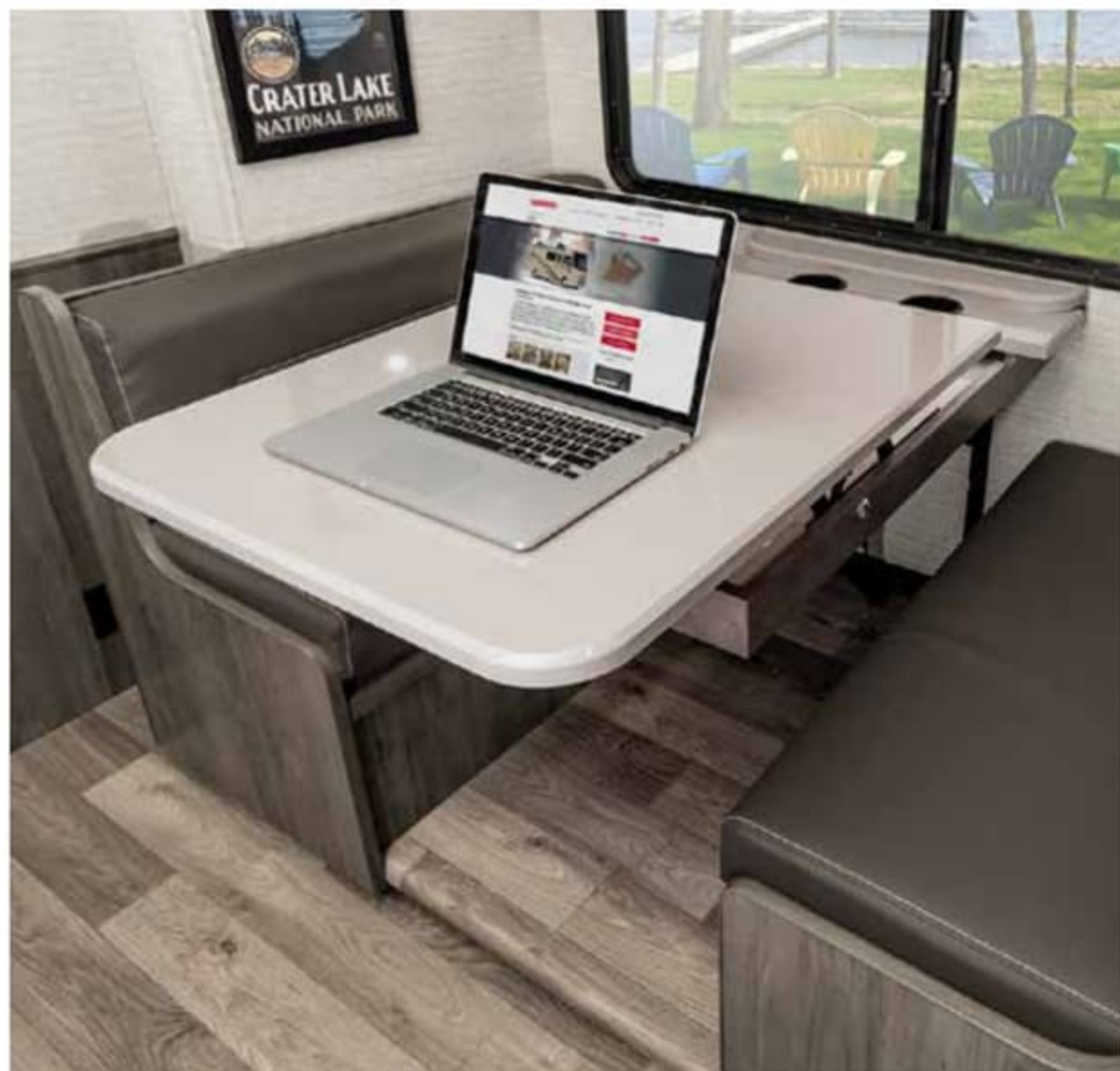
**REAL-WORLD SOLUTIONS**

Winnebago has pioneered hundreds of innovations to improve the RV experience. Our FlexBed™ System offers multiple sleeping options. Our BenchMark Dinette with Hi-Lo table adjusts to desired height and includes tabletop storage. The TrueLevel™ monitoring system takes the guesswork out of holding tank readings.

Exclusive innovations like those maximize storage and living space, enhance quality, and provide flexibility so you can configure and use your RV the way you want to.

**SMARTSPACE DESIGN**

Our SmartSpace™ design approach makes the most efficient use of the space in each coach. This has led to the creation of features such as the BenchMark® full-comfort dinette, with hidden storage compartments below its flip-up seats; full-extension drawer slides; and our extendable sectional sofa.



No one knows RVing like Winnebago®. Here's why smart RVers have chosen Winnebago for more than 60 years.

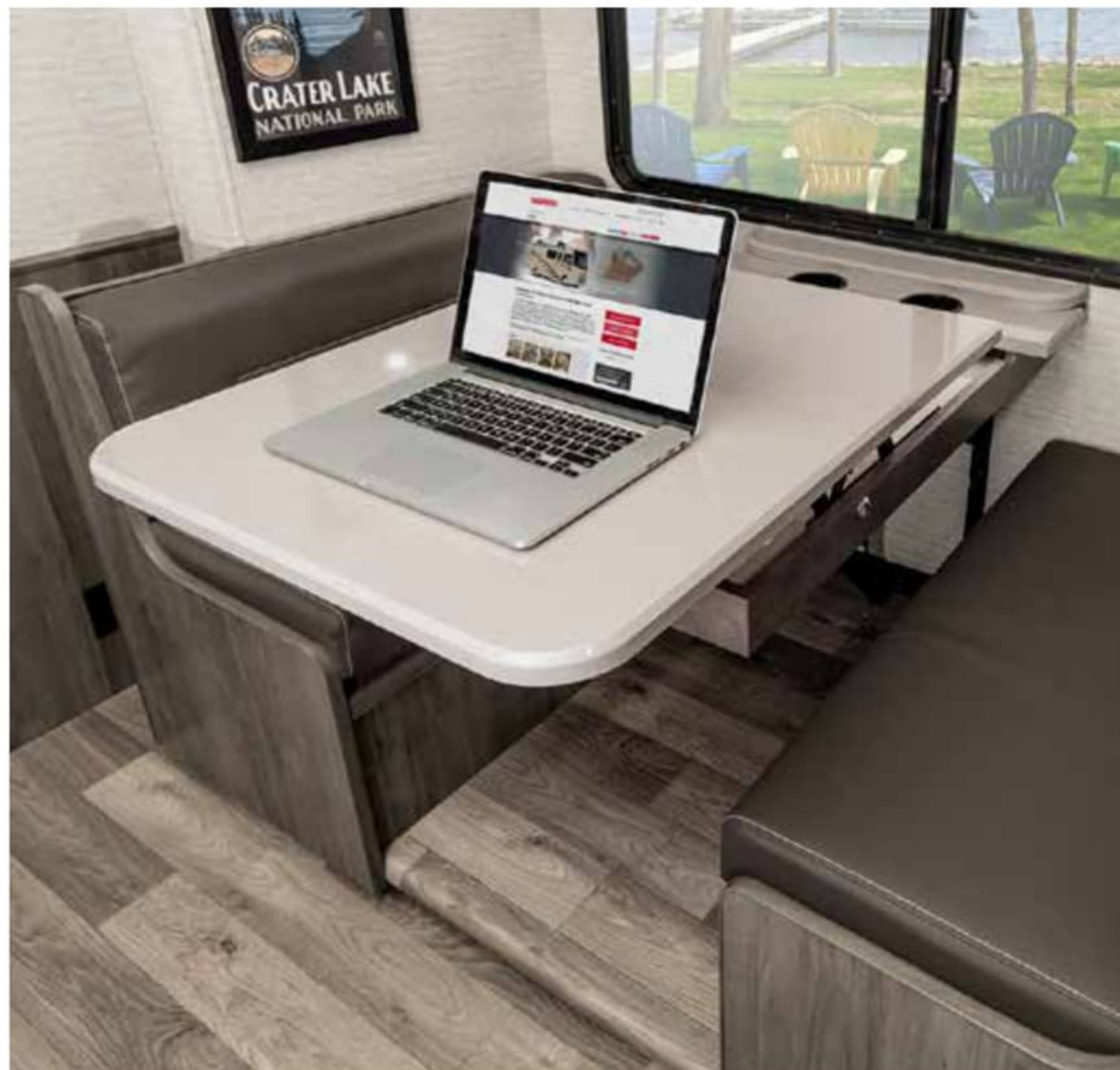
#### REAL-WORLD SOLUTIONS

Winnebago has pioneered hundreds of innovations to improve the RV experience. Our FlexBed™ System offers multiple sleeping options. Our BenchMark Dinette with Hi-Lo table adjusts to desired height and includes tabletop storage. The TrueLevel™ monitoring system takes the guesswork out of holding tank readings.

Exclusive innovations like those maximize storage and living space, enhance quality, and provide flexibility so you can configure and use your RV the way you want to.

#### SMARTSPACE DESIGN

Our SmartSpace™ design approach makes the most efficient use of the space in each coach. This has led to the creation of features such as the BenchMark® full-comfort dinette, with hidden storage compartments below its flip-up seats; full-extension drawer slides; and our extendable sectional sofa.





- 1 POWERED PATIO AWNING** with LED lighting
- 2 SLAM-CATCH HANDLES** allow convenient opening and closing of storage compartment doors
- 3 EXTERIOR COMPARTMENTS** that house holding tanks are heated and insulated
- 4 EXTERIOR ENTERTAINMENT 32" HDTV** with remote and speakers (27P, 31B, 32M, 35U); 39" HDTV (29V)
- 5 TINTED SLIDER WINDOWS** are more energy efficient to enhance heating and cooling
- 6 DELUXE VINYL GRAPHICS** with available partial paint upgrade
- 7 WHEELS** Stainless steel liners (27P, 29V, 31B, 32M); Aluminum (35U)
- 8 FORD® F53 CHASSIS** 7.3L PFI V8 engine, TorqShift™ 6-speed automatic transmission with tow/haul, 210-amp. alternator
- 9 LEVELING SYSTEM** automatic hydraulic jacks
- 10 A/C** 15,000 BTU air conditioner; 2 high-efficiency 13,500 BTU A/C (35U); available Cooling Upgrade Package with two A/C receptacles, 50-amp. power cord, 5,500-watt Cummins Onan® MicroQuiet™ gas generator (29V, 27P, 31B, 32M)
- 11 CUSTOM HOLDING TANKS** improve weight distribution and handling, increase storage space



- 1 POWERED PATIO AWNING** with LED lighting
- 2 SLAM-CATCH HANDLES** allow convenient opening and closing of storage compartment doors
- 3 EXTERIOR COMPARTMENTS** that house holding tanks are heated and insulated
- 4 EXTERIOR ENTERTAINMENT 32" HDTV** with remote and speakers (27P, 31B, 32M, 35U); 39" HDTV (29V)
- 5 TINTED SLIDER WINDOWS** are more energy efficient to enhance heating and cooling
- 6 DELUXE VINYL GRAPHICS** with available partial paint upgrade
- 7 WHEELS** Stainless steel liners (27P, 29V, 31B, 32M); Aluminum (35U)
- 8 FORD® F53 CHASSIS** 7.3L PFI V8 engine, TorqShift™ 6-speed automatic transmission with tow/haul, 210-amp. alternator
- 9 LEVELING SYSTEM** automatic hydraulic jacks
- 10 A/C** 15,000 BTU air conditioner; 2 high-efficiency 13,500 BTU A/C (35U); available Cooling Upgrade Package with two A/C receptacles, 50-amp. power cord, 5,500-watt Cummins Onan® MicroQuiet™ gas generator (29V, 27P, 31B, 32M)
- 11 CUSTOM HOLDING TANKS** improve weight distribution and handling, increase storage space

## Winnebago's Quality Construction

Exclusive steel SuperStructure surrounds the cab with a strong, durable support system delivering industry-leading safety and security.

- 1 THERMO-PANEL SIDEWALLS** Layers of fiberglass and high-density block foam insulation with welded aluminum support structures to create strong, durable, and lightweight sidewalls.
- 2 SOLID FRAMEWORK** Structural extruded aluminum creates an extremely strong, solid frame.
- 3 EMBEDDED STEEL** Metal substructures are embedded into the sidewall to provide solid attachment points to keep cabinets and appliances mounted securely in place.
- 4 INTERLOCKING JOINTS** Connects the floor, sidewalls, and roof to evenly distribute the weight of the roof along the entire span of the walls.
- 5 E-COAT** An electrodeposition coating helps protect critical steel components from corrosion, inside and out.
- 6 LASER-CUT TUBING** Our precision laser cutters create precise joints in structural steel that are stronger and require less welding.




- **Structural Warranty** 3 yr./36,000 miles
- **Roof Warranty** 10 yr. parts and labor
- **Roadside Assistance** 1 yr. complimentary
- **Safety Features** child seat tether anchors, LP, Smoke and carbon-monoxide detectors

## Winnebago's Quality Construction

Exclusive steel SuperStructure surrounds the cab with a strong, durable support system delivering industry-leading safety and security.

- 1 THERMO-PANEL SIDEWALLS** Layers of fiberglass and high-density block foam insulation with welded aluminum support structures to create strong, durable, and lightweight sidewalls.
- 2 SOLID FRAMEWORK** Structural extruded aluminum creates an extremely strong, solid frame.
- 3 EMBEDDED STEEL** Metal substructures are embedded into the sidewall to provide solid attachment points to keep cabinets and appliances mounted securely in place.
- 4 INTERLOCKING JOINTS** Connects the floor, sidewalls, and roof to evenly distribute the weight of the roof along the entire span of the walls.
- 5 E-COAT** An electrodeposition coating helps protect critical steel components from corrosion, inside and out.
- 6 LASER-CUT TUBING** Our precision laser cutters create precise joints in structural steel that are stronger and require less welding.



- 
- **Structural Warranty** 3 yr./36,000 miles
  - **Roof Warranty** 10 yr. parts and labor
  - **Roadside Assistance** 1 yr. complimentary
  - **Safety Features** child seat tether anchors, LP, Smoke and carbon-monoxide detectors



WEIGHTS & MEASURES	27P	29V	31B	NEW 32M	35U
Length	28'5"	30'	31'2"	31'9"	35'0"
Exterior Height <sup>1</sup>	12'	12'	12'2"	12'1"	12'1"
Exterior Width <sup>2</sup>	8'5.5"	8'5.5"	8'5.5"	8'5.5"	8'5.5"
Exterior Storage <sup>3</sup> (cu. ft.)	133	147	139	123	134
Awning Length	19'	17'	19'	17'	16'
Interior Height	6'8"	6'8"	6'8"	6'8"	6'8"
Interior Width	8'0.5"	8'0.5"	8'0.5"	8'0.5"	8'0.5"
Freshwater Tank Capacity <sup>4</sup> (gal.)	51	70	70	64	74
Water Heater Capacity (gal.)	6	6	6	6	6
Holding Tank Capacity - Black/Gray <sup>4</sup> (gal.)	50/45	40/61	43/59	41/57	41/57
LP Capacity <sup>5</sup> (lbs.)	76.14	76.14	76.14	76.14	76.14
Fuel Capacity (gal.)	80	80	80	80	80
GCWR <sup>6</sup> (lbs.)	23,000	23,000	23,000	23,000	26,000
GVWR (lbs.)	18,000	18,000	18,000	18,000	22,000
GAWR - Front (lbs.)	7,000	7,000	7,000	7,000	8,000
GAWR - Rear (lbs.)	12,000	12,000	12,000	12,000	15,000
Wheelbase	178"	190"	208"	208"	228"

## Ford® F53 Chassis

7.3L PFI V8 engine, TorqShift™ 6-speed automatic transmission w/tow/haul, 210-amp. alternator

Electronic stability control

Hydraulic brakes w/ABS

Trailer hitch<sup>6</sup> 5,000-lb. drawbar/500-lb. maximum vertical tongue weight

7-pin trailer wiring

Stainless steel wheel liners

Stylized aluminum wheels (35U)

Automatic hydraulic leveling jacks

Rear valve stem extensions

## Cab Conveniences

**Radio/Rearview Monitor System 7.0"** LCD color touch screen, Apple CarPlay®, Android Auto™, Sirius XM ready, rear color camera, Bluetooth®

**Versa driver's** seat swivels easily around steering wheel, w/two-position armrest, fixed lumbar support, and multi-adjustable slide/recline

**Passenger seat** swivels, w/two-position armrests, fixed lumbar support, and multi-adjustable slide/recline

**3-point seat belts**

**Removable utility table**

**Chassis/house battery radio power switch**

**Power steering** w/tilt and telescoping wheel

**Rearview power mirrors** w/defrost and power adjust

**Powered MCD blackout roller visor/shade** (front windshield)

**MCD blackout roller shade** (driver and passenger windows)

**Large panoramic windshield**

**Driver/passenger snap on vinyl closeout covers**

**Cruise control**

**Map light**

**Dash workstation** w/USB and 12-volt powerpoint

**Motor cover** w/integrated snack tray

**Instrument panel**

### OPTIONAL EQUIPMENT

**Video camera system** w/side view activation from turn signal

## Interior

**39" LCD HDTV** (27P, 29V, 31B, 32M)

**48" LCD HDTV** (35U)

**Dinette Hi-Lo Table** w/storage

**Amplified digital HDTV antenna system**

**Satellite system ready**

**Tinted windows**

**MCD blackout roller shades**

**OnePlace® systems monitor**

**Powered roof vents**

**LED lights**

**Vinyl flooring throughout**

**Entrance assist handle**

**Framed wall mirror** (NA 31B)

**Sofa/bed**

**USB chargers**

**Soft vinyl ceilings**

### OPTIONAL EQUIPMENT

**Powered StudioLoft™ bed** (w/ladder)

**Theater Seating** (NA 31B)

## Galley

**Thermoform countertop**

**Large, 2-door refrigerator/freezer**

**Microwave oven** w/touch controls

**3-burner glass top range** w/backlit control knobs, stainless-steel trim, flush w/countertop

**Pantry**

**Stainless-steel double sink**

**Powered ventilator ceiling fan**

### OPTIONAL EQUIPMENT

**Large 4-door refrigerator/freezer** w/icemaker, cold water purification system (32M, 35U)

**Microwave/convection oven** w/touch control

**Range w/oven**



WEIGHTS & MEASURES	27P	29V	31B	NEW 32M	35U
Length	28'5"	30'	31'2"	31'9"	35'0"
Exterior Height <sup>1</sup>	12'	12'	12'2"	12'1"	12'1"
Exterior Width <sup>2</sup>	8'5.5"	8'5.5"	8'5.5"	8'5.5"	8'5.5"
Exterior Storage <sup>3</sup> (cu. ft.)	133	147	139	123	134
Awning Length	19'	17'	19'	17'	16'
Interior Height	6'8"	6'8"	6'8"	6'8"	6'8"
Interior Width	8'0.5"	8'0.5"	8'0.5"	8'0.5"	8'0.5"
Freshwater Tank Capacity <sup>4</sup> (gal.)	51	70	70	64	74
Water Heater Capacity (gal.)	6	6	6	6	6
Holding Tank Capacity - Black/Gray <sup>4</sup> (gal.)	50/45	40/61	43/59	41/57	41/57
LP Capacity <sup>5</sup> (lbs.)	76.14	76.14	76.14	76.14	76.14
Fuel Capacity (gal.)	80	80	80	80	80
GCWR <sup>6</sup> (lbs.)	23,000	23,000	23,000	23,000	26,000
GVWR (lbs.)	18,000	18,000	18,000	18,000	22,000
GAWR - Front (lbs.)	7,000	7,000	7,000	7,000	8,000
GAWR - Rear (lbs.)	12,000	12,000	12,000	12,000	15,000
Wheelbase	178"	190"	208"	208"	228"

## Ford® F53 Chassis

**7.3L PFI V8 engine, TorqShift™ 6-speed automatic transmission w/tow/haul, 210-amp. alternator**

**Electronic stability control**

**Hydraulic brakes w/ABS**

**Trailer hitch<sup>6</sup> 5,000-lb. drawbar/500-lb. maximum vertical tongue weight**

**7-pin trailer wiring**

**Stainless steel wheel liners**

**Stylized aluminum wheels (35U)**

**Automatic hydraulic leveling jacks**

**Rear valve stem extensions**

## Cab Conveniences

**Radio/Rearview Monitor System 7.0"** LCD color touch screen, Apple CarPlay®, Android Auto,™ Sirius XM ready, rear color camera, Bluetooth®

**Versa driver's** seat swivels easily around steering wheel, w/two-position armrest, fixed lumbar support, and multi-adjustable slide/recline

**Passenger seat** swivels, w/two-position armrests, fixed lumbar support, and multi-adjustable slide/recline

**3-point seat belts**

**Removable utility table**

**Chassis/house battery radio power switch**

**Power steering** w/tilt and telescoping wheel

**Rearview power mirrors** w/defrost and power adjust

**Powered MCD blackout roller visor/shade** (front windshield)

**MCD blackout roller shade** (driver and passenger windows)

**Large panoramic windshield**

**Driver/passenger snap on vinyl closeout covers**

**Cruise control**

**Map light**

**Dash workstation** w/USB and 12-volt powerpoint

**Motor cover** w/integrated snack tray

**Instrument panel**

## OPTIONAL EQUIPMENT

**Video camera system** w/side view activation from turn signal

## Interior

**39" LCD HDTV** (27P, 29V, 31B, 32M)

**48" LCD HDTV** (35U)

**Dinette Hi-Lo Table** w/storage

**Amplified digital HDTV antenna system**

**Satellite system ready**

**Tinted windows**

**MCD blackout roller shades**

**OnePlace® systems monitor**

**Powered roof vents**

**LED lights**

**Vinyl flooring throughout**

**Entrance assist handle**

**Framed wall mirror** (NA 31B)

**Sofa/bed**

**USB chargers**

**Soft vinyl ceilings**

## OPTIONAL EQUIPMENT

**Powered StudioLoft™ bed** (w/ladder)

**Theater Seating** (NA 31B)

## Galley

**Thermoform countertop**

**Large, 2-door refrigerator/freezer**

**Microwave oven** w/touch controls

**3-burner glass top range** w/backlit control knobs, stainless-steel trim, flush w/ countertop

**Pantry**

**Stainless-steel double sink**

**Powered ventilator ceiling fan**

## OPTIONAL EQUIPMENT

**Large 4-door refrigerator/freezer** w/icemaker, cold water purification system (32M, 35U)

**Microwave/convection oven** w/touch control

**Range** w/oven





## Bath

Thermoform countertop  
Flexible showerhead  
Textured glass shower door (NA 27P)  
Shower door w/retractable screen (27P)  
Skylight  
Toilet w/foot pedal  
Powered roof ventilator fan  
Towel rack mounted inside of door  
Towel bar(s) (NA 27P)  
Towel ring(s)  
Robe hook(s)  
Tissue holder  
Medicine cabinet  
Mirror

## Bedroom

King bed w/foam mattress and storage below (27P, 32M, 35U)  
Queen bed w/foam mattress and storage below (29V, 31B)  
Headboard  
Bunk beds w/foam mattresses, mattress covers, and privacy curtain (31B)  
Powered ventilator fan (29V, 31B)  
Room divider sliding door (29V, 31B, 32M, 35U)  
Room divider curtain (27P)  
Pet palace for pet access or storage (32M, 35U)

### OPTIONAL EQUIPMENT

2 DVD players w/10.1" LCD monitors and headphones (31B bunk beds)  
24" HDTV (29V, 31B, 32M, 35U)  
32" HDTV (27P)

## Exterior

Premium high-gloss sidewall skin  
Graphic package includes black mirrors  
Deluxe package includes chrome mirrors  
Automatic entrance door steps and screen door

Powered patio awning w/LED lighting  
Entertainment center 32" HDTV w/remote and speakers (27P, 31B, 32M, 35U)  
Entertainment center 39" HDTV w/remote and speakers (29V)  
Front mud flaps  
Rearview mirrors w/defrost & power adjust  
Side-hinged storage doors w/paddle latch  
Porch light w/interior switch  
Lighted storage compartments  
Ladder  
Entry assist handle  
PetPal leash tie down  
Tailgate Package refrigerator, 3-drawer cabinet, LED lights, stainless steel portable grill with quick-connect LP hose, sink, faucet, wall-mounted bottle opener, garbage bag holder, paper towel holder (29V, 31B)

## Heating & Cooling System

15,000 BTU air conditioner  
30,000 BTU low-profile furnace (27P, 29V, 31B)  
35,000 BTU low-profile furnace (32M)  
40,000 BTU low-profile furnace (35U)  
2-high-efficiency 13,500 BTU AC (35U)

### OPTIONAL EQUIPMENT

Cooling Upgrade Package w/two AC receptacles, 50-amp. power cord, 5,500-watt Cummins Onan® MicroQuiet™ gas generator (27P, 29V, 31B, 32M)

## Electrical System

AC/DC load center, 30-amp. converter/charger (27P, 29V, 31B, 32M)  
AC/DC load center, 50-amp. converter/charger (35U)  
30-amp. power cord  
4,000-watt Cummins Onan® MicroQuiet™ gas generator  
5,500-watt Cummins Onan® MicroQuiet™ gas generator (35U)

2 deep-cycle Marine/RV Group 31 batteries  
Battery disconnect system (coach)  
Automatic dual-battery charge control  
Auxiliary start circuit  
AC duplex receptacle  
Cable TV input  
Exterior antenna jack  
DC receptacles  
1,000-watt inverter w/remote panel  
Solar panel/battery charger wiring prep three-way, solar, plug-ready port located on roof and single port in exterior bay, for aftermarket installation, up to 450-watts  
WiFi Prep Kit

### OPTIONAL EQUIPMENT

One 115-watt solar panel mounted onto roof  
Solar panel battery charge system

## Plumbing System

Service Center colored labels, pressurized city water hookup w/diverter valve, drainage valves, 10' sewer hose  
6-gallon LP water heater w/electronic ignition  
Heated holding tank compartment  
Permanent-mount LP tank w/gauge  
On-demand water pump  
TrueLevel™ holding tank monitoring system  
Winterization Package water heater bypass valve and siphon tube  
LPG Quick Connect (patio side) (29V, 31B, 35U)  
Water system filtration package  
Holding tank flushing system (black tank only)

## Safety

Child seat tether anchor (forward facing dinette seat)  
LP, smoke, and carbon monoxide detectors  
10 BC fire extinguisher  
Ground fault interrupter  
High-mount brake lamp

## Warranty<sup>7</sup>

12-month/15,000-mile basic limited warranty<sup>8</sup>  
36-month/36,000-mile limited warranty on structure<sup>8</sup>  
10-year limited parts-and-labor warranty on fiberglass roof skin<sup>8</sup>

### FOOTNOTES

- The height of each model is measured to the top of the tallest standard feature and is based on the curb weight of a typically equipped unit. The actual height of your vehicle may vary by several inches depending on chassis or equipment variations. Please contact your dealer for further information.
- Floorplans feature a wide-body design - over 96". In making your purchase decision, you should be aware that some states restrict access on some or all state roads to 96" in body width. Before making your purchase decision, you should confirm the road usage laws in the states of interest to you.
- The load capacity of your motorhome is designated by weight, not by volume, so you cannot necessarily use all available space when loading your motorhome.
- Capacities are based on measurements prior to tank installation. Slight capacity variations can result due to installation applications.
- Capacities shown are tank manufacturer's listed water capacity (W.C.). Actual filled LP capacity is 80% of listing due to overfilling prevention device on tank.
- Actual towing capacity is dependent on your particular loading and towing circumstances which includes the GVWR, GAWR, and GCWR, as well as adequate trailer brakes. Please refer to the Operator's Manual of your vehicle for further towing information.
- See separate chassis warranty.
- See your dealer for complete warranty information.

NA Not Available

Not all items available in combination. See dealer for details.

Because features, specifications, equipment, and options may vary from those highlighted in this brochure, the buyer is responsible for confirming with the dealer the features, specifications, equipment, and options included in their specific vehicle. In addition, Winnebago's program of continuous product improvement may result in changes to vehicle specifications, equipment, model availability, and price without notice.



## Bath

Thermoform countertop  
Flexible showerhead  
Textured glass shower door (NA 27P)  
Shower door w/retractable screen (27P)  
Skylight  
Toilet w/foot pedal  
Powered roof ventilator fan  
Towel rack mounted inside of door  
Towel bar(s) (NA 27P)  
Towel ring(s)  
Robe hook(s)  
Tissue holder  
Medicine cabinet  
Mirror

## Bedroom

King bed w/foam mattress and storage below (27P, 32M, 35U)  
Queen bed w/foam mattress and storage below (29V, 31B)  
Headboard  
Bunk beds w/foam mattresses, mattress covers, and privacy curtain (31B)  
Powered ventilator fan (29V, 31B)  
Room divider sliding door (29V, 31B, 32M, 35U)  
Room divider curtain (27P)  
Pet palace for pet access or storage (32M, 35U)

### OPTIONAL EQUIPMENT

2 DVD players w/10.1" LCD monitors and headphones (31B bunk beds)  
24" HDTV (29V, 31B, 32M, 35U)  
32" HDTV (27P)

## Exterior

Premium high-gloss sidewall skin  
Graphic package includes black mirrors  
Deluxe package includes chrome mirrors  
Automatic entrance door steps and screen door

Powered patio awning w/LED lighting  
Entertainment center 32" HDTV w/remote and speakers (27P, 31B, 32M, 35U)  
Entertainment center 39" HDTV w/remote and speakers (29V)  
Front mud flaps  
Rearview mirrors w/defrost & power adjust  
Side-hinged storage doors w/paddle latch  
Porch light w/interior switch  
Lighted storage compartments  
Ladder  
Entry assist handle  
PetPal leash tie down  
Tailgate Package refrigerator, 3-drawer cabinet, LED lights, stainless steel portable grill with quick-connect LP hose, sink, faucet, wall-mounted bottle opener, garbage bag holder, paper towel holder (29V, 31B)

## Heating & Cooling System

15,000 BTU air conditioner  
30,000 BTU low-profile furnace (27P, 29V, 31B)  
35,000 BTU low-profile furnace (32M)  
40,000 BTU low-profile furnace (35U)  
2-high-efficiency 13,500 BTU AC (35U)

### OPTIONAL EQUIPMENT

Cooling Upgrade Package w/two AC receptacles, 50-amp. power cord, 5,500-watt Cummins Onan® MicroQuiet™ gas generator (27P, 29V, 31B, 32M)

## Electrical System

AC/DC load center, 30-amp. converter/charger (27P, 29V, 31B, 32M)  
AC/DC load center, 50-amp. converter/charger (35U)  
30-amp. power cord  
4,000-watt Cummins Onan® MicroQuiet™ gas generator  
5,500-watt Cummins Onan® MicroQuiet™ gas generator (35U)

2 deep-cycle Marine/RV Group 31 batteries  
Battery disconnect system (coach)  
Automatic dual-battery charge control  
Auxiliary start circuit  
AC duplex receptacle  
Cable TV input  
Exterior antenna jack  
DC receptacles  
1,000-watt inverter w/remote panel  
Solar panel/battery charger wiring prep three-way, solar, plug-ready port located on roof and single port in exterior bay, for aftermarket installation, up to 450-watts  
WiFi Prep Kit

### OPTIONAL EQUIPMENT

One 115-watt solar panel mounted onto roof  
Solar panel battery charge system

## Plumbing System

Service Center colored labels, pressurized city water hookup w/diverter valve, drainage valves, 10' sewer hose  
6-gallon LP water heater w/electronic ignition  
Heated holding tank compartment  
Permanent-mount LP tank w/gauge  
On-demand water pump  
TrueLevel™ holding tank monitoring system  
Winterization Package water heater bypass valve and siphon tube  
LPG Quick Connect (patio side) (29V, 31B, 35U)  
Water system filtration package  
Holding tank flushing system (black tank only)

## Safety

Child seat tether anchor (forward facing dinette seat)  
LP, smoke, and carbon monoxide detectors  
10 BC fire extinguisher  
Ground fault interrupter  
High-mount brake lamp

## Warranty<sup>7</sup>

12-month/15,000-mile basic limited warranty<sup>8</sup>  
36-month/36,000-mile limited warranty on structure<sup>8</sup>  
10-year limited parts-and-labor warranty on fiberglass roof skin<sup>8</sup>

### FOOTNOTES

- The height of each model is measured to the top of the tallest standard feature and is based on the curb weight of a typically equipped unit. The actual height of your vehicle may vary by several inches depending on chassis or equipment variations. Please contact your dealer for further information.
- Floorplans feature a wide-body design - over 96". In making your purchase decision, you should be aware that some states restrict access on some or all state roads to 96" in body width. Before making your purchase decision, you should confirm the road usage laws in the states of interest to you.
- The load capacity of your motorhome is designated by weight, not by volume, so you cannot necessarily use all available space when loading your motorhome.
- Capacities are based on measurements prior to tank installation. Slight capacity variations can result due to installation applications.
- Capacities shown are tank manufacturer's listed water capacity (W.C.). Actual filled LP capacity is 80% of listing due to overfilling prevention device on tank.
- Actual towing capacity is dependent on your particular loading and towing circumstances which includes the GVWR, GAWR, and GCWR, as well as adequate trailer brakes. Please refer to the Operator's Manual of your vehicle for further towing information.
- See separate chassis warranty.
- See your dealer for complete warranty information.

NA Not Available

Not all items available in combination. See dealer for details.

Because features, specifications, equipment, and options may vary from those highlighted in this brochure, the buyer is responsible for confirming with the dealer the features, specifications, equipment, and options included in their specific vehicle. In addition, Winnebago's program of continuous product improvement may result in changes to vehicle specifications, equipment, model availability, and price without notice.

**KENNY AND SABRINA PHILLIPS** Several years ago, it seemed like the only time Kenny and Sabrina really had together was on vacation. So Sabrina, a pulmonary/critical care physician who travels to different locations for work, and Kenny, a small business owner, decided to downsize and simplify.

Kenny sold his business and they became full-time RVers in their Winnebago Vista® LX.

As they put it, "We have laughed, loved, and experienced more in the last 12 months living in our Winnebago than we have in the last nine years."

You can learn more about Sabrina and Kenny at <https://winnebago.com/lifestyle/winnebagolife>. You'll also find hundreds of other great stories from GoLife's outstanding contributors along with how-to articles, gear reviews, RVing tips, and much more.



**KENNY AND SABRINA PHILLIPS** Several years ago, it seemed like the only time Kenny and Sabrina really had together was on vacation. So Sabrina, a pulmonary/critical care physician who travels to different locations for work, and Kenny, a small business owner, decided to downsize and simplify.

Kenny sold his business and they became full-time RVers in their Winnebago Vista® LX.

As they put it, "We have laughed, loved, and experienced more in the last 12 months living in our Winnebago than we have in the last nine years."

You can learn more about Sabrina and Kenny at <https://winnebago.com/lifestyle/winnebagolife>. You'll also find hundreds of other great stories from GoLife's outstanding contributors along with how-to articles, gear reviews, RVing tips, and much more.

