



FULLHOUSE



Room for
adventure.

2023

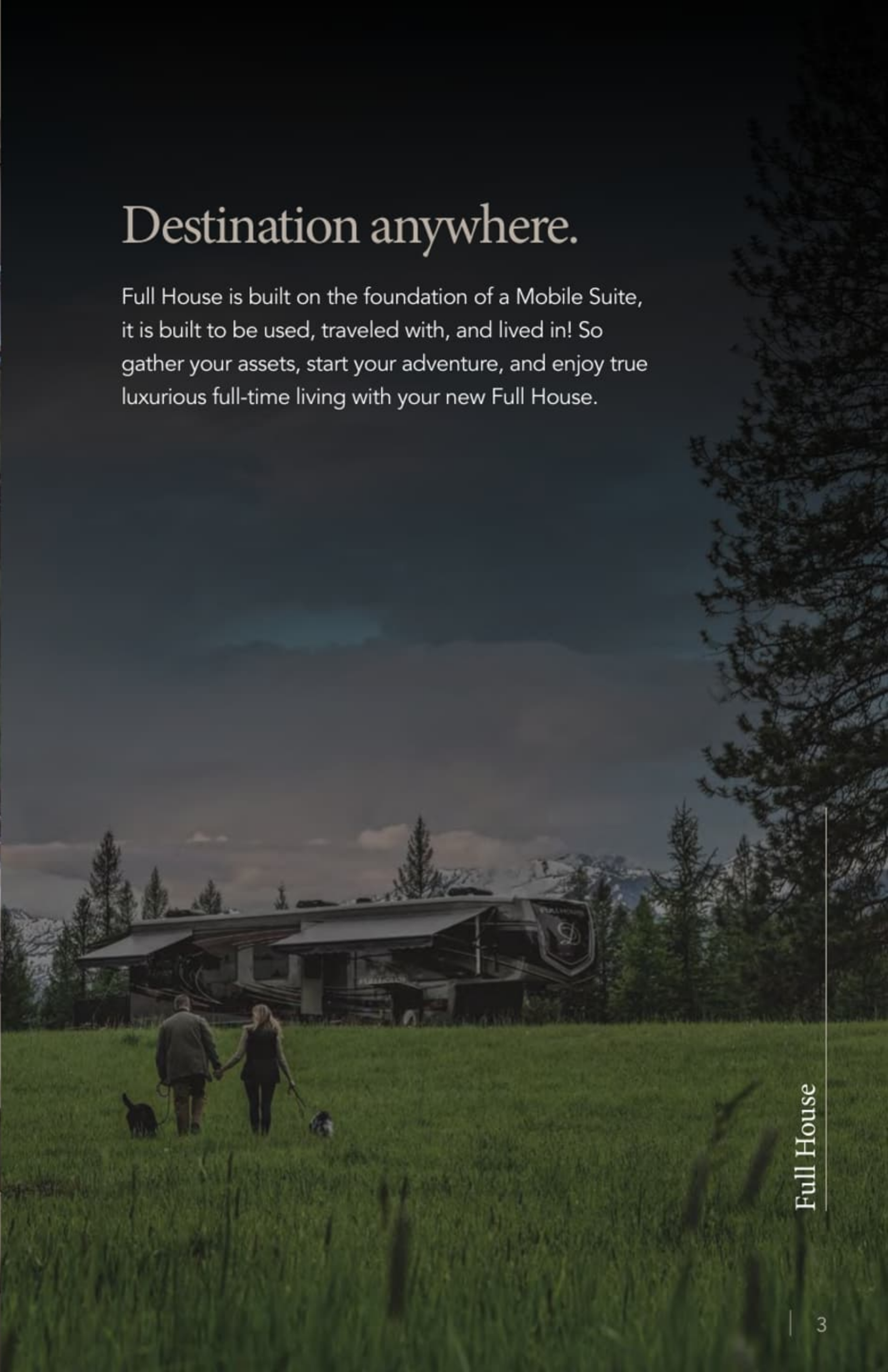




JX450 - Italian White Cabinets
with Invoke Décor

Destination anywhere.

Full House is built on the foundation of a Mobile Suite, it is built to be used, traveled with, and lived in! So gather your assets, start your adventure, and enjoy true luxurious full-time living with your new Full House.





Full House
JX450



Luxury from the word go.

The JX450 boast a full residential kitchen with tons of storage, solid surface countertops, full dinette, theater seating, and 55" TV entertainment center.

Full-time living requires several items most toy haulers tend to ignore, but we put an emphasis on ensuring each floor plan offers a spacious kitchen with residential appliances, and functional storage.







LX455 - Columbian Maple Cabinets
with Invoke Décor
and Luna Furniture

The Foundation of Luxury.

The LX455 features a 12 foot garage, accommodating the larger toys without compromising on full time amenities. The completely finished heated and cooled garage, means that you have a large open space with endless opportunities to fill it to suit your lifestyle. Perfect for your toys, home office, bunkroom for the kids, or whatever your needs are for more space, Full House has you covered.



Full House



Full House

LX455

Foundation of Luxury.

Featured in the LX455 is a full residential kitchen, large entertainment center with opposing extra long theater seating to accommodate guests. The standard master suite DRV continues to provide is featured in the upper deck with king sized bed, overhead storage, and vanity slide allowing for extra walk around space. A large bathroom is easily accessible from the entry door. A washer and dryer connection is located near the entry, meaning the laundry doesn't have to be done in the garage. All Full House models feature a standard vanity slide providing more room in front of the bed. Each master suite offers excellent storage capabilities that include a walk-in closet with cedar lining and full underbed storage.





Full House
GARAGE FEATURES



Luxury asset hauler.

The Full House takes the typical toy hauler garage to the next level. Every model comes standard with custom metal cabinetry, a 50" TV, a portable metal folding table, and diamond plate wallbase throughout.

The optional patio enclosure with steps is a popular choice. You can also add electric drop down beds, jack knife sofas, and a three season patio door enclosure.



Floor Plans

- 17 1/2" H-Rated Tires
- 8,000 lb. Rated Axles (triple axle models)
- Heavy Duty 9,000 lb. Axles (tandem axle models)
- Fresh Tank - 100 gal.
- Gray Tank - 75 gal.
- Black Tank - 50 gal.
- Hot Water Heater - 12 gal.
- Automotive Disc Brakes

All models feature

JX450



10' Garage
46' 0" Length
20,310 UVW
24,000 GVWR

LX455



12' Garage
46' 0" Length
19,680 UVW
24,000 GVWR

MX450



13' Garage
46' 0" Length
20,310 UVW
24,000 GVWR

Note: All lengths are measured from the pin box to the rear cap. All dry weights are estimates depending on options.



High Octane

Partial Body Paint (Standard)



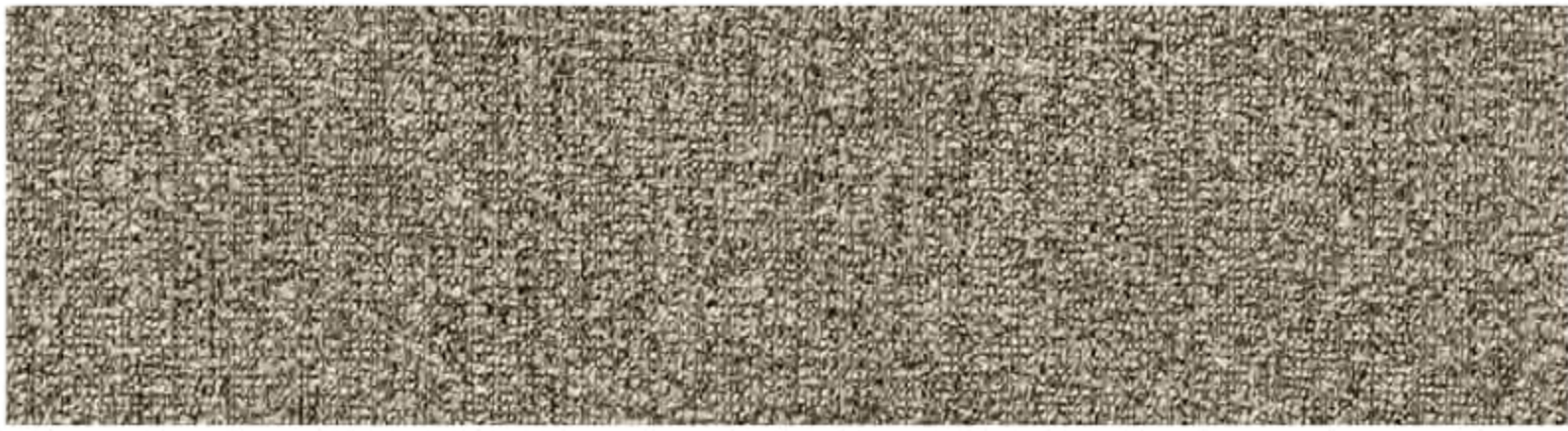
Lexington Park

Partial Body Paint (Standard)



Monterey Cliffs

Partial Body Paint (Standard)



Invoke Dinette Chairs



FULLHOUSE



Chai Hickory Cabinets



Columbian Maple Cabinets



Italian White Cabinets



Aurora Cream Countertops



Granite Sofas



Luna Sofas



Truffle Sofas



Nestle Flooring



Shade Flooring



Virtual Gloss Carpet

The foundation of true freedom.

If there's one thing we've learned after all these years on the road, it's this: People choose DRV Luxury Suites because they're ready to *enjoy* life. They don't want to spend their time worrying about things like quality, construction and service. Which is why we put so much thought into them in the first place. Every DRV product is built to *last* — with our unique triple-stacked box tube frame, the thickest sidewalls in the industry, screwed and glued aluminum framing for unshakable stability, and dozens of no-excuses features that'll keep you safe, comfortable and worry-free, even when Mother Nature's at her worst.

Structure

Custom engineered and tested 15" triple steel box tube chassis. Super strong foundation to build a lasting, high quality fifth wheel.

All-weather heavy duty aluminum floor system. The floor is screwed and bolted together and will not rot over time. We also refuse to use staples which eventually work up through the floor covering.

R-29 insulated frame floor system with three weather barriers.
Warm floors for extended or full-time use; keep out condensation.

Technology

State-of-the-art Level-Up™ leveling system and industrial hydraulic system. Level your coach with the push of a button.

Automotive style Kodiak® disc brakes. Limited lifetime warranty; smoother stopping; shorter stopping distance; low maintenance cost.

Heavy duty H-rated 17.5" tires and aluminum eight-bolt wheels. Heavier load capacity. Special tread pattern to dissipate heat. Tires are regroovable for miles and miles of safe use. Wheels are lightweight and will not rust.

SeeLevel tank monitoring system. Uses sonar to provide instant and accurate readings of all tanks.

At DRV Luxury Suites, we build each fifth wheel the same way we'd build our own home. And we appoint it with the finest luxury features available — lush homelike furnishings, cedar-lined closets and fireplaces, large French door refrigerators, stainless steel appliances, top-of-the-line electronics and more. Then we back it up with the best quality control and customer service in the industry. Every single coach is tested before it ever leaves the factory. And, if you should someday have a problem, rest assured, we'll get it fixed. No matter where you are. Day or night.

Livability

Screwed and glued construction. Solid; 16" o.c. stud spacing.

3.25" aluminum framed walls with R-16 insulated rating. Exclusive foam core vapor barrier. Lightweight; lower heating and cooling cost; noise reduction; eliminates chance of condensation.

Radiused aluminum roof rafters on 16" centers. More space; more insulation; improved water run-off; maximum load capacity per square foot.

R-25 insulated roof system with plywood and rubber or fiberglass covering. Improved weather barrier; sound deadening; low maintenance; lower heating and cooling costs.

Soft touch interior ceiling. Sound proofing; easy to clean; extra insulation.

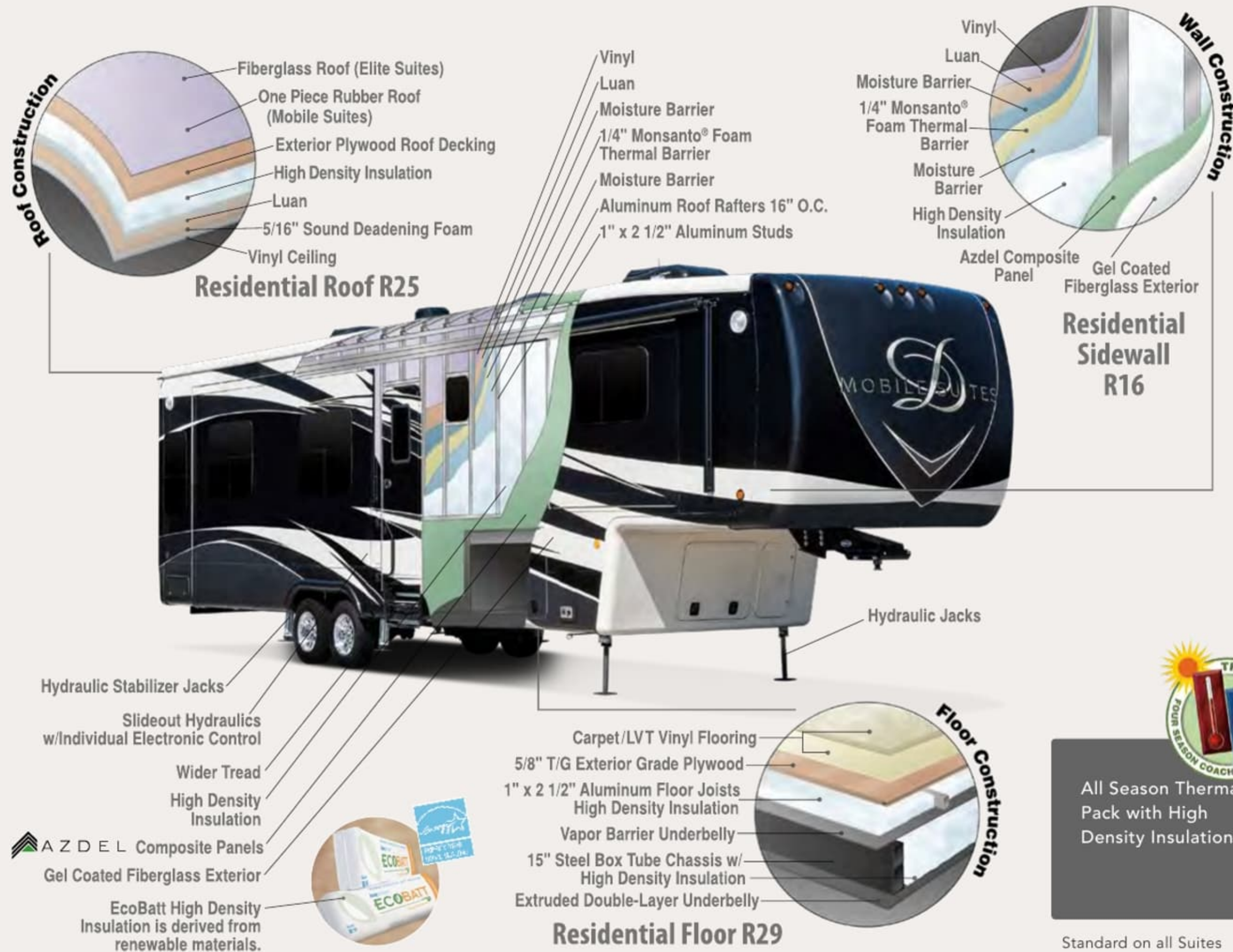
Refinements

Conveniently located wall switches control all lighting. Fingertip control of all task and decorative lighting.

Overhead LED room lighting on dimmer switches. Personal light control.

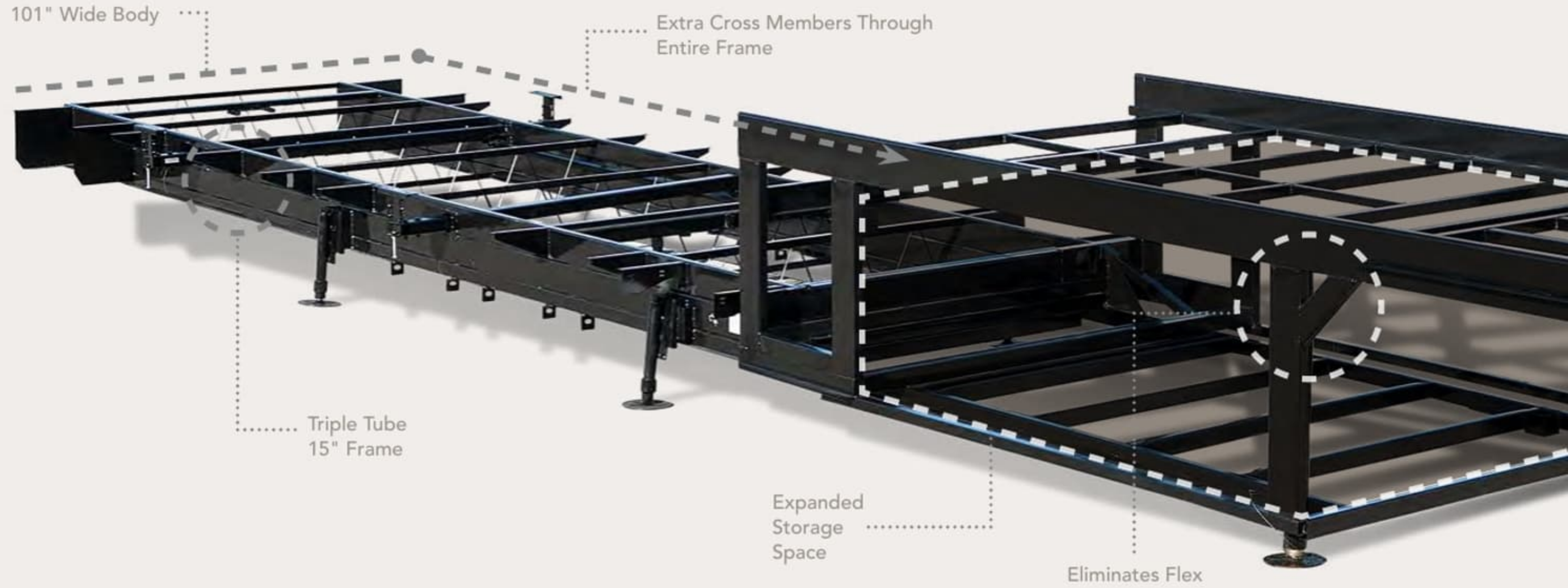
Designer raised panel cabinet doors and soft-close drawers and doors. Optimal storage; residential look; residential function.

NOTE: Some features shown are exclusive to specific makes and models. Please review the complete Standards and Options list for availability.



Reliability

- High pressure hydraulic lines with metal fittings
- Individual push-button slide room controls
- Industrial stabilizer jacks located and wind tested to provide maximum stability
- Heavy gauge UL copper wiring
- Residential copper water manifold
- Reliable LED lights
- Convenient lights at all exterior service locations
- Gel coat fiberglass walls and exterior doors
- Plywood roof decking
- Extra sound proofing in floor, walls and roof
- Ultra quiet ducted lo-pro A/Cs
- Automotive disc brakes
- Furnace return air replaceable filter
- Oversized basement storage doors with gas lift cylinders
- Custom painted exterior graphics
- Tough-skin, specially coated rock guard



Stacked triple-tube steel frame for 15" of maximum strength; the largest foundation on any fifth wheel in the industry.

Pinless hydraulic jacks are mounted at a 5-degree angle for maximum stability.

Commercial hydraulic rack & pinion slide-outs. All gear boxes are located inside the frame for the ultimate weather protection.

Residentially hung sidewalls are carriage-bolted into the floor for solid construction and superior strength.

R-16 residential insulation completely surrounds all of our walls and slides. Best insulation in the industry and eco-friendly!



Solid Box Steel Frame

The foundation is the most important part of your home. It needs to be strong, reliable and able to last the test of time. DRV's custom-engineered 15" triple box tube frame measures 101" wide – the largest, most rigid fifth wheel frame in the industry. This design eliminates flex around the pin box and allows us to frame even the upper deck with steel to open up the storage compartment, providing you with space to fit all your personal belongings.

DRV 6-Jack Level-Up System

Designed by DRV, our 6-jack level-up system provides quick and easy leveling and the strength to stabilize the coach when set up.



Our 3 1/4" walls are the thickest in the industry, giving you maximum insulation from noise and weather. The exclusive foam core vapor barrier eliminates condensation.

MORryde® I.S. Suspension eliminates the axle and leaf springs, allowing each tire to work independently. With 5 1/2" of travel per assembly, MORryde® I.S. will absorb road shock and protect your home for its lifetime.

Commercial E-Z Lube® hubs surrounded by 8 large 5/8" stud bolts and standard automotive disc brakes round out the safety features of every DRV unit.

Heavy-duty 17.5" tires provide increased load capacity while staying cool on long hauls. We use truck tires, not RV tires, to ensure better performance and peace of mind.

A copper water manifold comes standard, ensuring equal water pressure throughout your home. And each water line is clearly labeled and has its own shut-off valve, allowing you to isolate a single line without shutting off water to the rest of your home.

Standards

Frame/Running Gear:

- 17 1/2" H-Rated Re-Groovable Tires
- Heavy Duty Grease Bolt Shackles w/Bronze Bushing
- Automotive Style Disc Brakes
- Heavy Duty 8,000 Lb. Rated Axles (Most Models)
- Commercial Grade EZ Lube Hubs
- 15" Triple Stacked Box Tube Frame
- 101" Wide Body
- Industrial Hydraulic System for Jacks & Lower Level Slides
- Electric Bedroom Slide
- Slide Outs w/Select Push Button Controls
- Pinless, Industrial Hydraulic Front Landing Jacks at 5° Outboard Angle

Construction: Floor

- 3" Thick Floor
- 14" O.C. Floor Aluminum Floor Joists
- Screwed & Glued Joist Construction
- 5/8" Tongue & Groove Plywood Flooring
- Residential Perimeter Heating
- Residential Rated R29 Formaldehyde Free Insulation

Construction: Walls/Slides

- 3 1/4" Thick Walls/Slides
- 16" O.C. Stud Spacing
- Screwed & Glued Aluminum Stud Construction
- 1/4" Monsanto® Fome-Cor Vapor Barrier (Eliminates Condensation)
- 1/4" Thick High Gloss Gelcoat Fiberglass
- Azdel OnBoard Composite Panels
- Residential Rated R16 Formaldehyde Free Insulation

Construction: Roof

- 16" O.C. Rafter Spacing
- Residential Rated R25 Formaldehyde Free Insulation
- 1/2" Plywood Roof Overlayment
- Seamless, 1-Piece Rubber Roof
- Soft-Touch Vinyl Ceiling, Including Interior Slide-Out Ceilings

Exterior:

- Straight Roof Line w/8' Tall Interior Slide Out Height
- Subzero Thermo-Pack High Density Insulation
- High Gloss Gelcoat Fiberglass Molded Caps
- Custom Painted Exterior w/Clear Coat

- Frameless Tinted Safety Glass Windows
- LED Back-Up Lights
- Commercial LED Exterior Clearance Lights
- Mid-Ship and Front Cap Turn Signal
- LED Docking Lights
- Dual 78" Entry Door
- Removable Storm Door Panels
- Metal Slam Door Compartment Latches
- Extra Thick Compartment Doors w/Gas Struts
- Motion Sensor LED Lights in Basement
- Custom Enlarged Control Center w/LED Lighting
- Lend-a-Hand Exterior Grab Handle
- Power Awning w/Aluminum Weather Shield (Over Both Entry Doors)
- Water Pump Switch at Outside Hookup Center

Systems/Tanks:

- 50 Amp Service w/Detachable Cord
- 80 Amp 12 VDC Converter
- 100 Gal. Fresh Water Tank
- 75 Gal. Grey Water Tank w/Power Flush
- 50 Gal. Black Water Tank w/Power Flush

- SeeLevel Tank Monitoring System on All Tanks
- Residential Type 1/2" PEX Water Lines
- Exclusive Copper Water Manifold w/Individual Shut-Off Valves
- Whole House Water Filtration System
- Multi-Switch Water Bypass System
- Slide Out Propane Tray w/Dual 40 Lb. Tanks
- 12VDC Battery on Pull Out Tray
- Truma On Demand Water Heater
- 40,000 BTU Furnace w/Custom Plenum
- Residential 5 Duct Heating System w/6" Ducting
- Forced Heat Ducting to Tanks/ Water System
- Fully Ducted A/C System w/Cold Air Return
- Triple 15,000 BTU Low-Profile A/Cs
- Solar Prep
- HD Roof Satellite Prep for Dual DVR Receivers
- HD Ground Satellite & Cable Prep
- HD TV Antenna

Interior: Luxury Living Room/Dinette

- Hand Laid Vinyl Floor Tile
- Residential Rebond Carpet Pad

- Plush Residential High Durability Carpet
- Solid Hardwood Cabinetry
- Interior Ceiling Fan (some models)
- Solid Hardwood Fascia Trim Around Slide Outs
- Solid Hardwood Cabinet Stiles (Pocket Drilled/Screwed)
- Concealed Soft-Close Cabinet Door Hinges
- Raised Panel Cabinetry
- Soft-Close Full Extension Metal Drawer Guides
- LED Interior Ceiling Lighting on Dimmer Switches
- Utility Closet w/Coat Storage & Centralized Control Station
- Custom Hardwood Dinette Buffet w/Solid Surface Top (Some Models)
- Dinette Table w/Hidden Leaf Extension (Some Models)
- (2) Hardwood Dinette Chairs w/Fabric Accent (Some Models)
- Crown Molding Throughout
- HD Wiring Throughout

Interior: Gourmet Kitchen

- 20 Cu. Ft. Residential Stainless Steel French Door Refrigerator

- Pull-Out 13 Gal. Garbage Can
- Stainless Steel Convection/Microwave
- Deep Double Bowl Stainless Steel Sink w/Apron Front & Residential Kitchen Faucet w/Sprayer
- Residential Kitchen Faucet w/Sprayer
- High Polished Solid Surface Countertops
- Residential Style Stainless Steel Range
- Custom Appliance Garage w/Pull-Out Tray (Most Models)
- Lighted Pantries & Kitchen/Bathroom Toe Kicks

Interior: Master Bath/Hallway

- Hardwood Steps with Woven Insert
- Hand Laid Vinyl Tile Throughout
- Washer/Dryer Prep
- Heat & A/C Ducting in Bathroom
- Maxxair® Fan in Bathroom
- One Piece Fiberglass Shower
- Sky-Light Over Shower w/LED Pot Light
- Porcelain Toilet w/Water Saver Spray
- Macerator Toilet (Some Models)

Interior: Master Bedroom

- Custom Walk-in Front Closet w/Built in Dresser (Most Models)
- Real Cedar Lined Front Closet
- Custom Hardwood Wardrobe Doors
- King Bed Suite 72" x 80" w/Innerspring Mattress
- Full Storage Under Bed Base
- 32" TV
- Dimmable Over the Bed Reading Lights on Separate Switches
- Vanity Slide

Garage:

- Industrial Metal Overhead Cabinetry
- LED Lighting
- 50" LED HD TV
- Touch Screen/Blue Tooth Garage Audio/Ent. System
- Dual 30 Gal. Fuel Tanks w/Fuel Pump & Fill Station

Full House Package (Forced Option):

- 55" LED TV & Home Theatre Package
- 32" LED Bedroom TV Package

- 50" LED TV Garage
- Garage Ent. System w/Touch Screen
- 17 1/2" H-Rated Spare Tire
- Side Mounted Fold-Out Ladder
- Frameless Thermopane Windows
- Dual Door 4-Step Entry

Executive Package (Forced Option):

- MCD Day/Night Roller Shades
- Built-In Fireplace
- 1000W Inverter w/Dual 6V Batteries
- Maxxair® Fan w/Rain Sensor - Bathroom
- Maxxair® Fan w/Rain Sensor - Kitchen
- Power Management System
- Six Point Hydraulic Leveling System
- One Touch Auto Leveling
- Keyless Entry Door (Both Doors)
- Onan 5.5 Gasoline Generator w/Auto Gen. Start



SCAN TO WATCH
THE FULL HOUSE
BRAND VIDEO

Options

Cabinets (Standards):

- Chai Hickory
- Columbian Maple
- Italian White

Décor (Standards):

- Invoke

Counters (Standards):

- Aurora Cream

Interior:

- Power Recliner
- Theatre Seating Recliners
- Chai Hickory Folding Chair
- Columbian Maple Folding Chair
- Solid Surface Bartop w/Storage (Some Models)

Entertainment:

- 32" LED HDTV Outdoor Ent. (Some Models)
- Winegard® Trav'ler HD Auto Satellite

Bedroom:

- Built in Front Wardrobe Safe w/Keyless Entry
- Queen Bed Suite

Garage:

- Electric Drop Down Sofa/Bed
- Electric Drop Down Bed
- Fold-Up Outdoor Patio
- 3 Season Patio Door
- Removable Table

Systems/Vents/Fans:

- Heat Pump
- Maxxair® w/Switch Control – Garage
- Splendide® Front Load 2 Piece
- Splendide® XC 2,100 Combo
- Winegard HALO System

Construction/Running Gear:

- Power Cord Reel (Some Models)
- HBA Brake Cam (To be Ordered Special for Customers w/GM Trucks)

Exterior/Awnings:

- Slide Toppers
- Power Dinette Slide Awning w/Weathershield
- Slide Out Storage Tray (36" x 90")
- Voyager 270 Camera System
- CSA

Partial Body Paint (Standards):

- High Octane
- Lexington Park
- Monterey Cliffs

This brochure is based upon the latest product information available at the time of printing. DRV reserves the right to make changes at any time to prices, colors, materials, equipment, specifications and models, and to discontinue models without notice or obligation. Color representations are as close as photographic/print reproduction will allow. All specifications are approximate and dimensions nominal. Text and/or photos may represent equipment or décor items which may not be included as a standard item in your model of choice.

NEW TECHNOLOGY

RV Halo™ Voice

BY WINEGARD™

AI Enabled Online & Offline Voice Assistant

Simplified, scalable and streamlined.
Always-on & connected for the ultimate user experience.

The RV Halo Voice integrates with existing control and multiplexing systems.

Models available with and without camera.



Access almost every facet of your living space with the user-friendly RV Halo Voice.

CONTROL

- Devices
- Lighting (on/off/dim)
- Slide outs
- Awnings
- Jacks

CHECK

- Tank levels
- Battery voltage
- Internet status
- Direct Spark Ignition monitoring

FEATURES

- Online Voice Control
- Security Camera
- Leveling System
- Temperature
- Offline Edge Voice control
- RV-C Interface
- A/V Control
- Integrates with complete RV Halo lineup including RV Halo App
- Motion Safety Switch ensures safe operation of slide-outs



COMMAND EXAMPLES

Voice commands are customizable for your coach options. Integrates with **Amazon Alexa** commands.

"OK RV..."

"set up camp"

"retract the awning"

"all lights off"

"night light on"

"night light off"

"all lights on"

"what is my fresh tank level?"

"get my gray tank level"

"additional command"

"what's the indoor temperature?"

"what's my internet status?"

"what's the shore power status?"

"enable the camera"

"set A/C to 70"

"A/C off"

"A/V system off"

 "what's the weather?"

"additional command"

ASA *Voyager* Camera

For better RV maneuvering and visibility on the road, the ASA Voyager® 270 camera system features a three-camera bird's eye view, turn signal triggers and audible blind spot alerts.

270° OBSERVATION SYSTEM Safety Made Simple

Auto-Calibration

Calibration between components happens in less than a minute. This patented production-friendly technology will save your team time and hassle.

Birds-Eye View

Three cameras work together to generate a 270 degree seamless top down image of the drivers surroundings.

Wireless

This industry-first wireless observation system brings assurance and peace of mind to anyone maneuvering extended vehicles without the hassle of additional wiring requirements.

EXPAND YOUR VISION.

NOTE:

The Voyager 270 and ASA iN-Command® system with RV Halo™ Voice are optional features that can be added during the DRV build process.



WELCOME TO MyDRV



MyDRV is a mobile app that allows customers to manage their RV, monitor warranty information, and track sales and past orders. You can also access a robust library of how-to content, checklists, and other valuable resources, right from your phone.

You can manage your RV online or by downloading the mobile app.

CREATE YOUR ACCOUNT

Download the mobile app or activate online.


*****@gmail.com

STEP 1
Create an account or sign in to get started.

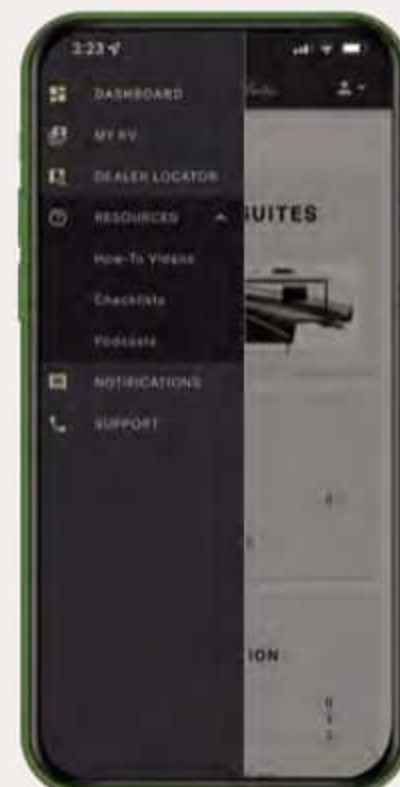
*** ** 12345

10/14/2021

STEP 2
Verify your VIN number and purchase date.



STEP 3
Verify your email.





DRV Factory Tours

DRV Luxury Suites is open for factory tours, and we cannot wait to take you through the DRV build process and give you an in-depth look at the DRV Difference.

DRV factory tours are extremely important to our success and telling our story. Factory tours are a personal way to get to know our company and see many unique construction features we offer standard in all our products. We take pride in our quality and our construction and will spend as much time as we needed to make sure we answer all your questions. Factory tours are held **Monday, Wednesday, and Friday at 10 a.m. EST**, so please call ahead or click the link below to schedule your tour.

Freedom is calling.

Full House

2023



Peace of mind from coast to coast.

Relax. Your new DRV fifth wheel is backed by the best customer service on the road. Whether you need a mobile tech, warranty work or just a little help figuring out your electronics, we'll make it right. Anywhere in America. *That's true freedom.*

DRVSuites.com
Destination freedom.



www.suitesowners.com | Be sure to join our outstanding DRV owner's club!

0160 W 750 N | PO Box 235 | Howe, IN 46746
Factory tours by appointment. Please call 260-562-1075 for specifics.

